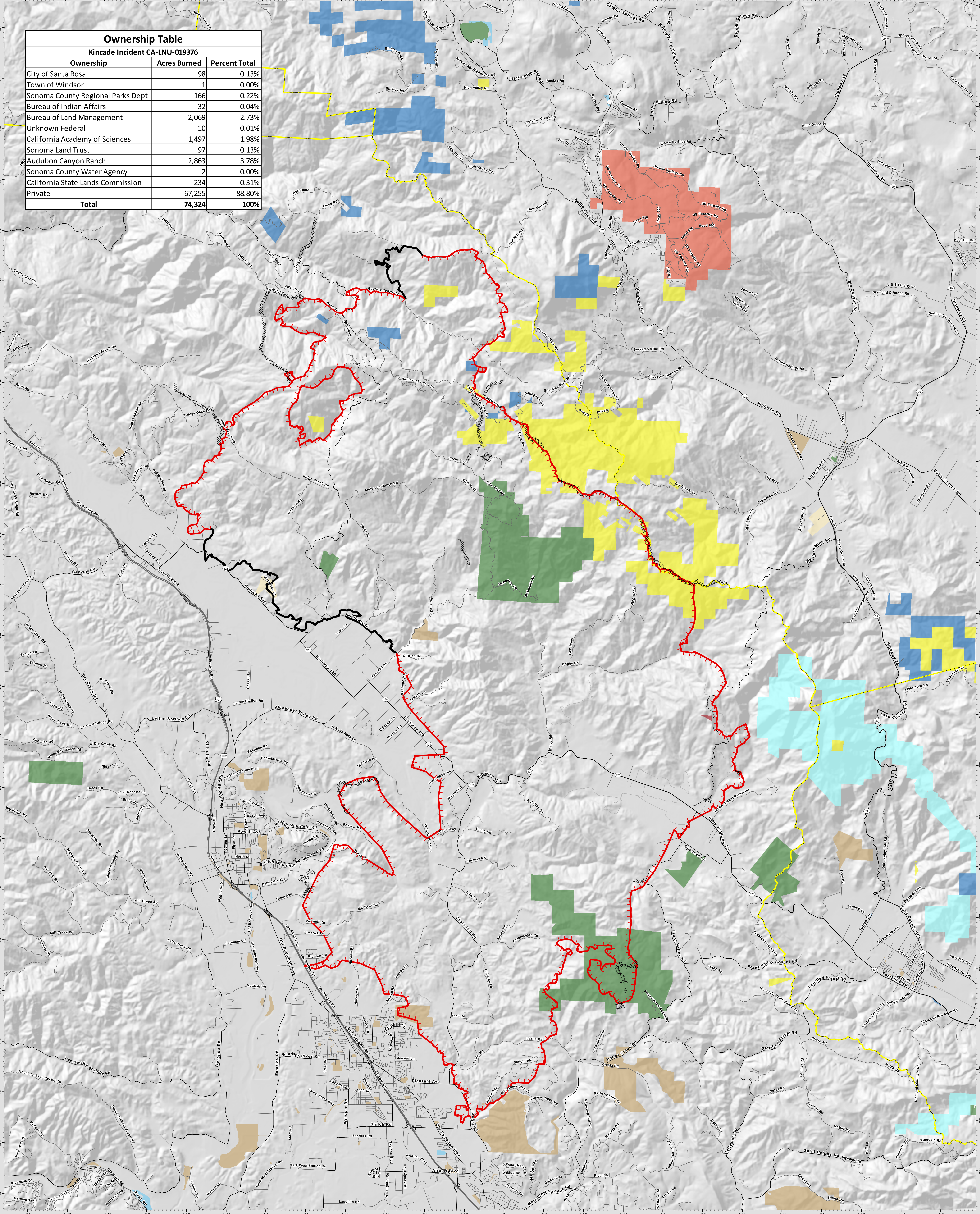


Ownership Table		
Kincade Incident CA-LNU-019376		
Ownership	Acres Burned	Percent Total
City of Santa Rosa	98	0.13%
Town of Windsor	1	0.00%
Sonoma County Regional Parks Dept	166	0.22%
Bureau of Indian Affairs	32	0.04%
Bureau of Land Management	2,069	2.73%
Unknown Federal	10	0.01%
California Academy of Sciences	1,497	1.98%
Sonoma Land Trust	97	0.13%
Audubon Canyon Ranch	2,863	3.78%
Sonoma County Water Agency	2	0.00%
California State Lands Commission	234	0.31%
Private	67,255	88.80%
Total	74,324	100%



Legend:

- Local Government
- CA Dept. of Forestry and Fire Protection
- CA Dept. of Fish and Wildlife
- Bureau of Land Management
- Other Federal Lands
- Non-Profit Conservancies and Trusts
- CA Dept. of Parks and Recreation
- Other State Lands
- Bureau of Indian Affairs

- Uncontrolled Fire Edge
- Completed Line

OWNERSHIP MAP
KINCADE INC
 CALNU 019376
 10/29/2019
 0700-0700



OWN MAP
 KINCADE INC
 CALNU 019376
 10/29/2019
 0700-0700

OWN MAP
 KINCADE INC
 CALNU 019376
 10/29/2019
 0700-0700

1:40,000

0 0.5 1 Miles

DISCLAIMER: The displayed incident costs are approximate and should only be used for informational purposes. The information contained in this report was generated from GIS data maintained by different sources and agencies and is not necessarily accurate to mapping, surveying or engineering standards.

MT 6 GISS
 10/29/2019
 0007 Hours
 NAD 83 Teale Albers