



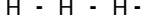











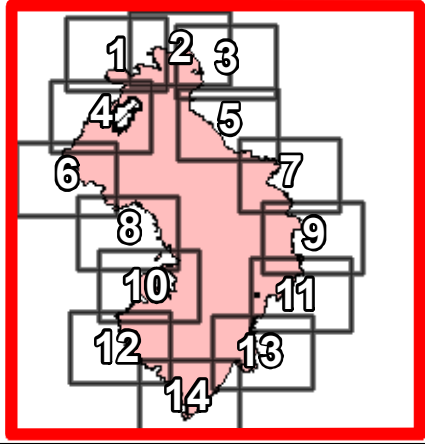


IAP MAP

Kincade Incident
 CA-LNU-019376
 Nov 2, 2019
 Index Page

-  Uncontrolled Fire Edge
-  Completed Line
-  Completed Dozer Line
-  Completed Hand Line
-  Access or Improved Road
-  Airstrip or Airport
-  Dip Site
-  Drop Point
-  Helibase
-  Helispot
-  Mobile Weather Unit
-  Repeater
-  Retardant/Mud Pit
-  Staging Area
-  Life Safety Hazard
-  Aviation Check

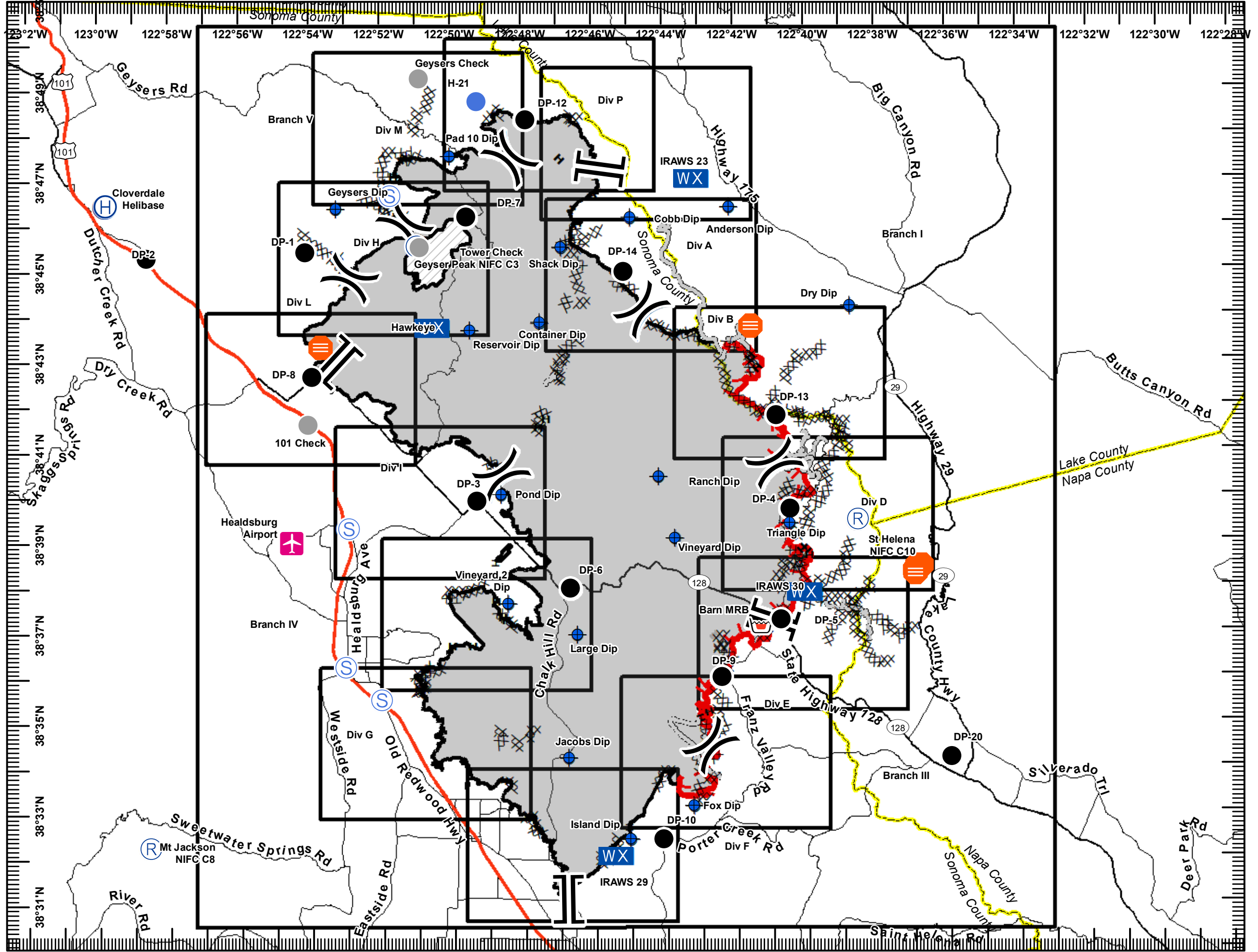


Miles
 0 1.5 3



DISCLAIMER: The displayed incident data is approximate and should only be used for informational purposes. The information contained in supporting base layers was generated from GIS data maintained by different sources and agencies and is not necessarily accurate to mapping, surveying or engineering standards.

1:150,000
 November 01, 2019
 2202



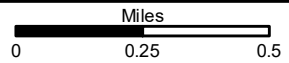
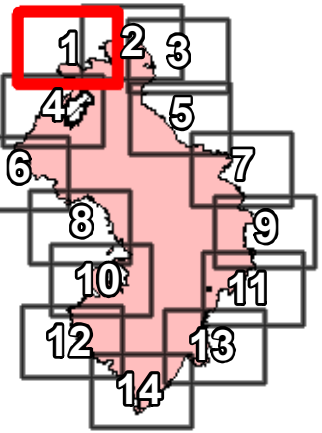
IAP MAP

Kincade Incident
CA-LNU-019376

Nov 2, 2019

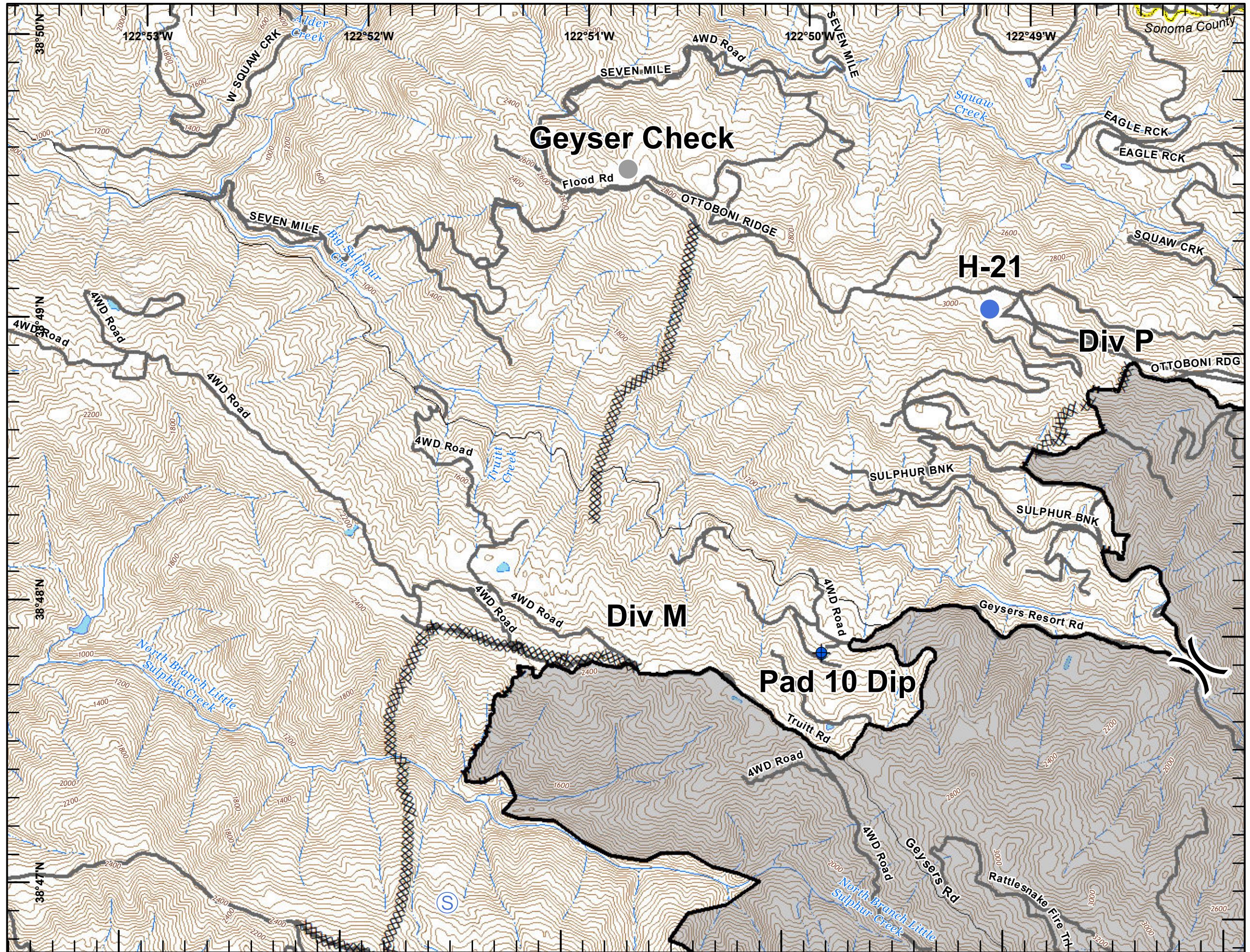
Page 1

- Completed Line
- XXXXXX Completed Dozer Line
- H - H - H - Completed Hand Line
- ⊕ Dip Site
- Helispot
- Ⓢ Staging Area
- Aviation Check
-) (Division Break



DISCLAIMER: The displayed incident data is approximate and should only be used for informational purposes. The information contained in supporting base layers was generated from GIS data maintained by different sources and agencies and is not necessarily accurate to mapping, surveying or engineering standards.

1:24,000
IMT 6 GIS
November 01, 2019
2202



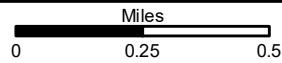
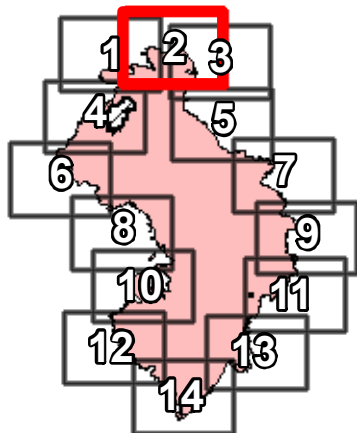
IAP MAP

Kincade Incident
CA-LNU-019376

Nov 2, 2019

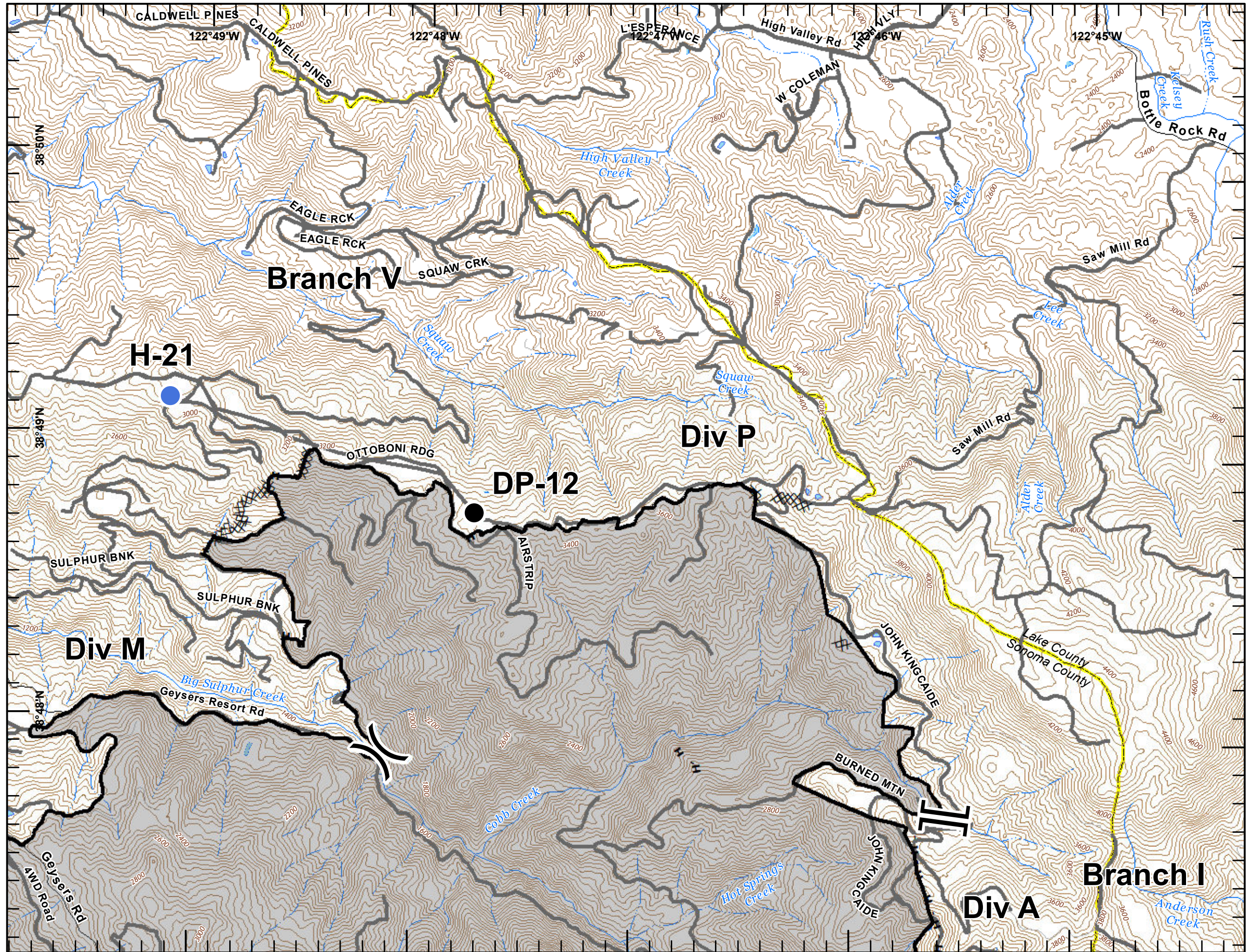
Page 2

- Completed Line
- Completed Dozer Line
- Completed Hand Line
- Dip Site
- Drop Point
- Helispot
- Division Break
- Branch Break



DISCLAIMER: The displayed incident data is approximate and should only be used for informational purposes. The information contained in supporting base layers was generated from GIS data maintained by different sources and agencies and is not necessarily accurate to mapping, surveying or engineering standards.

1:24,000
IMT 6 GIS
November 01, 2019
2203



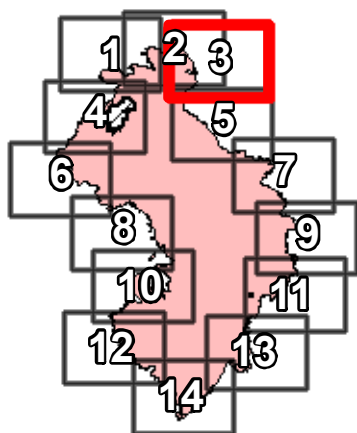
IAP MAP

Kincade Incident
CA-LNU-019376

Nov 2, 2019

Page 3

- Completed Line
- Completed Dozer Line
- Completed Hand Line
- Access or Improved Road
- Dip Site
- Mobile Weather Unit
- Branch Break

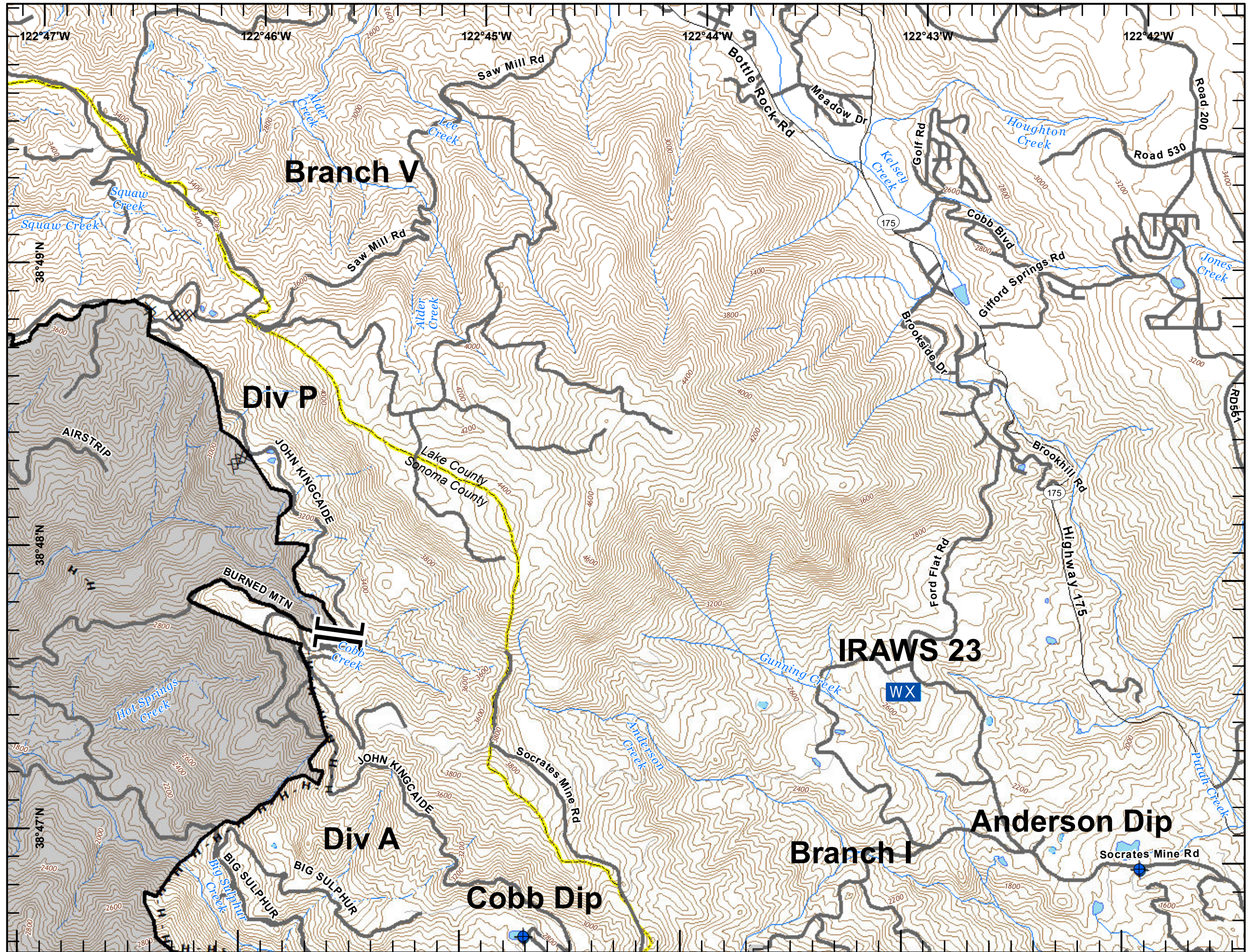


Miles
0 0.25 0.5



DISCLAIMER: The displayed incident data is approximate and should only be used for informational purposes. The information contained in supporting base layers was generated from GIS data maintained by different sources and agencies and is not necessarily accurate to mapping, surveying or engineering standards.

1:24,000
IMT 6 GIS
November 01, 2019
2203



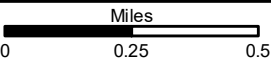
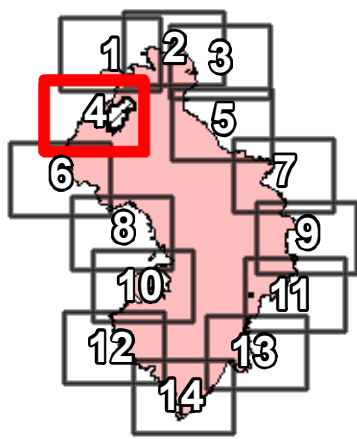
IAP MAP

Kincade Incident
CA-LNU-019376

Nov 2, 2019

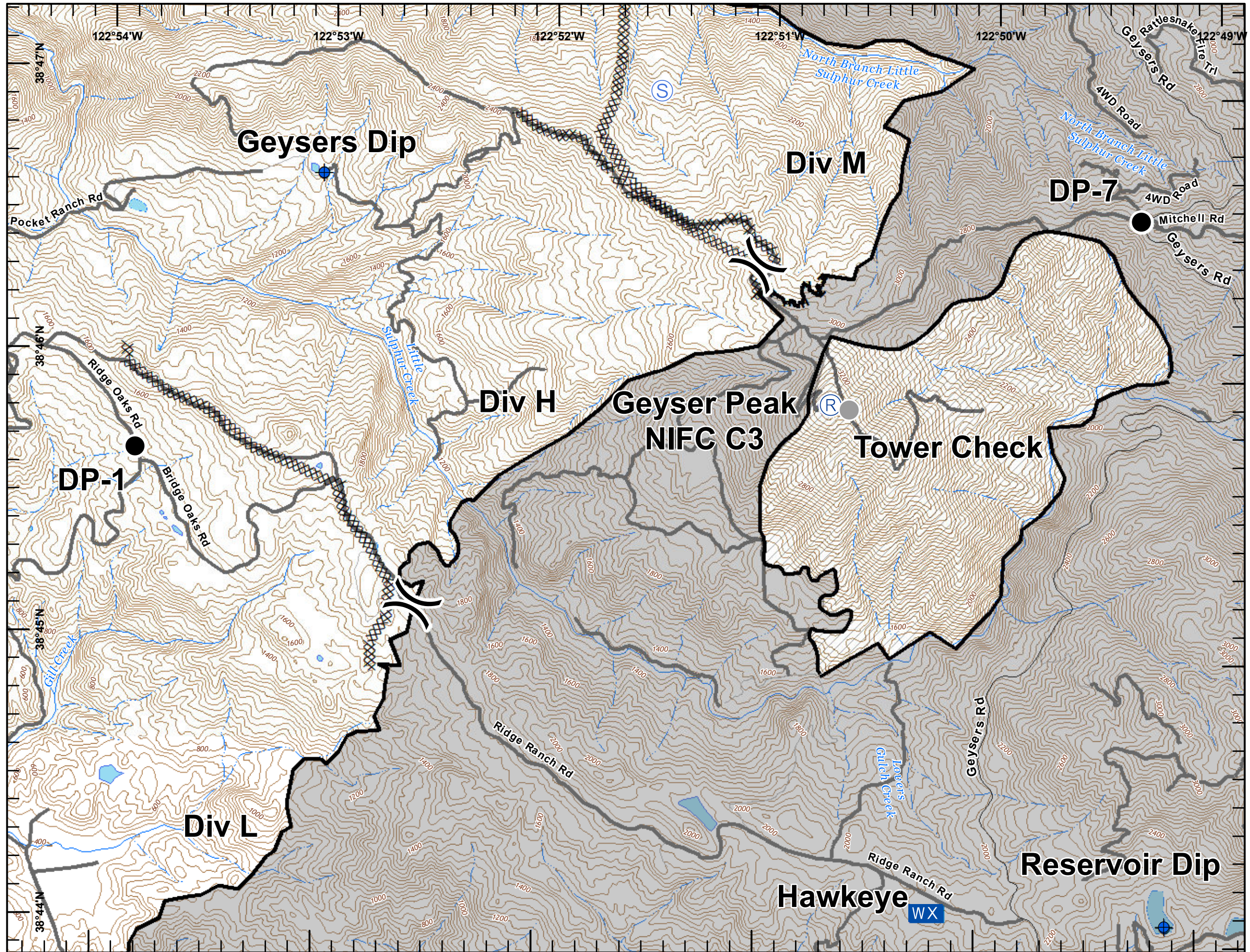
Page 4

- Completed Line
- Completed Dozer Line
- Completed Hand Line
- Dip Site
- Drop Point
- Mobile Weather Unit
- Repeater
- Staging Area
- Aviation Check
- Division Break



DISCLAIMER: The displayed incident data is approximate and should only be used for informational purposes. The information contained in supporting base layers was generated from GIS data maintained by different sources and agencies and is not necessarily accurate to mapping, surveying or engineering standards.

1:24,000
IMT 6 GIS
November 01, 2019
2204




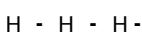







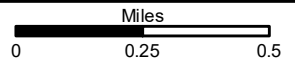
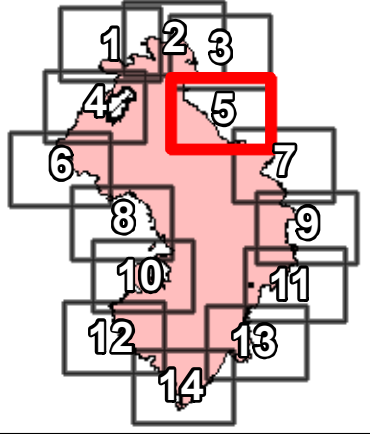
IAP MAP

Kincade Incident
CA-LNU-019376

Nov 2, 2019

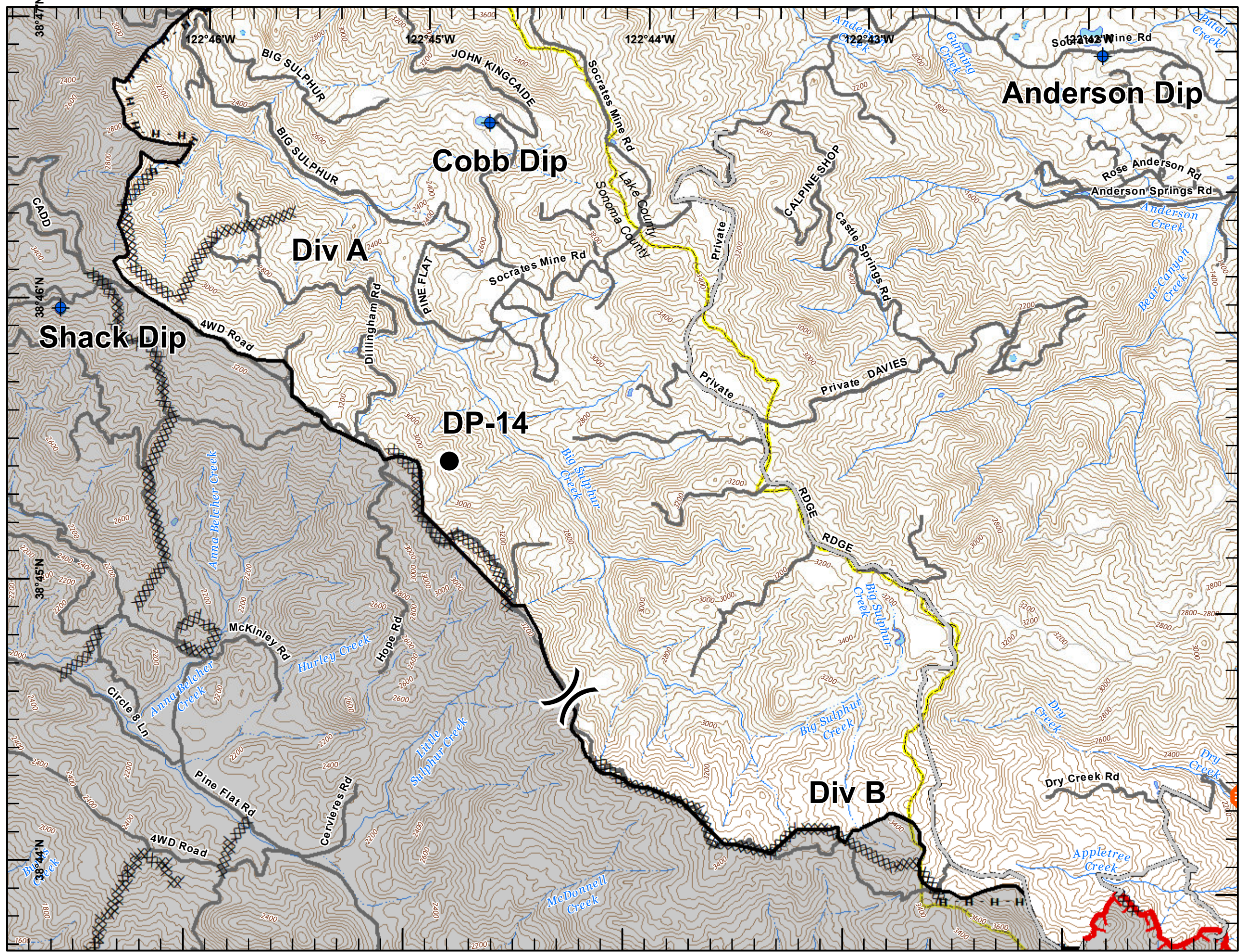
Page 5

-  Uncontrolled Fire Edge
-  Completed Line
-  Completed Dozer Line
-  Completed Hand Line
-  Access or Improved Road
-  Dip Site
-  Drop Point
-  Life Safety Hazard
-  Division Break



DISCLAIMER: The displayed incident data is approximate and should only be used for informational purposes. The information contained in supporting base layers was generated from GIS data maintained by different sources and agencies and is not necessarily accurate to mapping, surveying or engineering standards.

1:24,000
IMT 6 GIS
November 01, 2019
2204








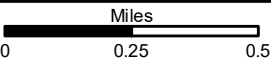
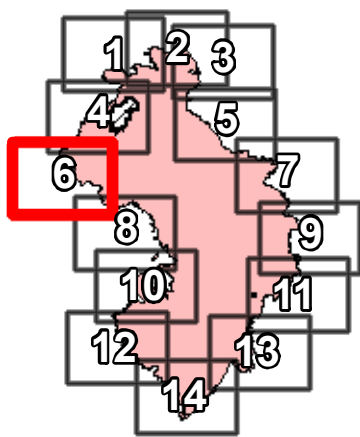
IAP MAP

Kincade Incident
CA-LNU-019376

Nov 2, 2019

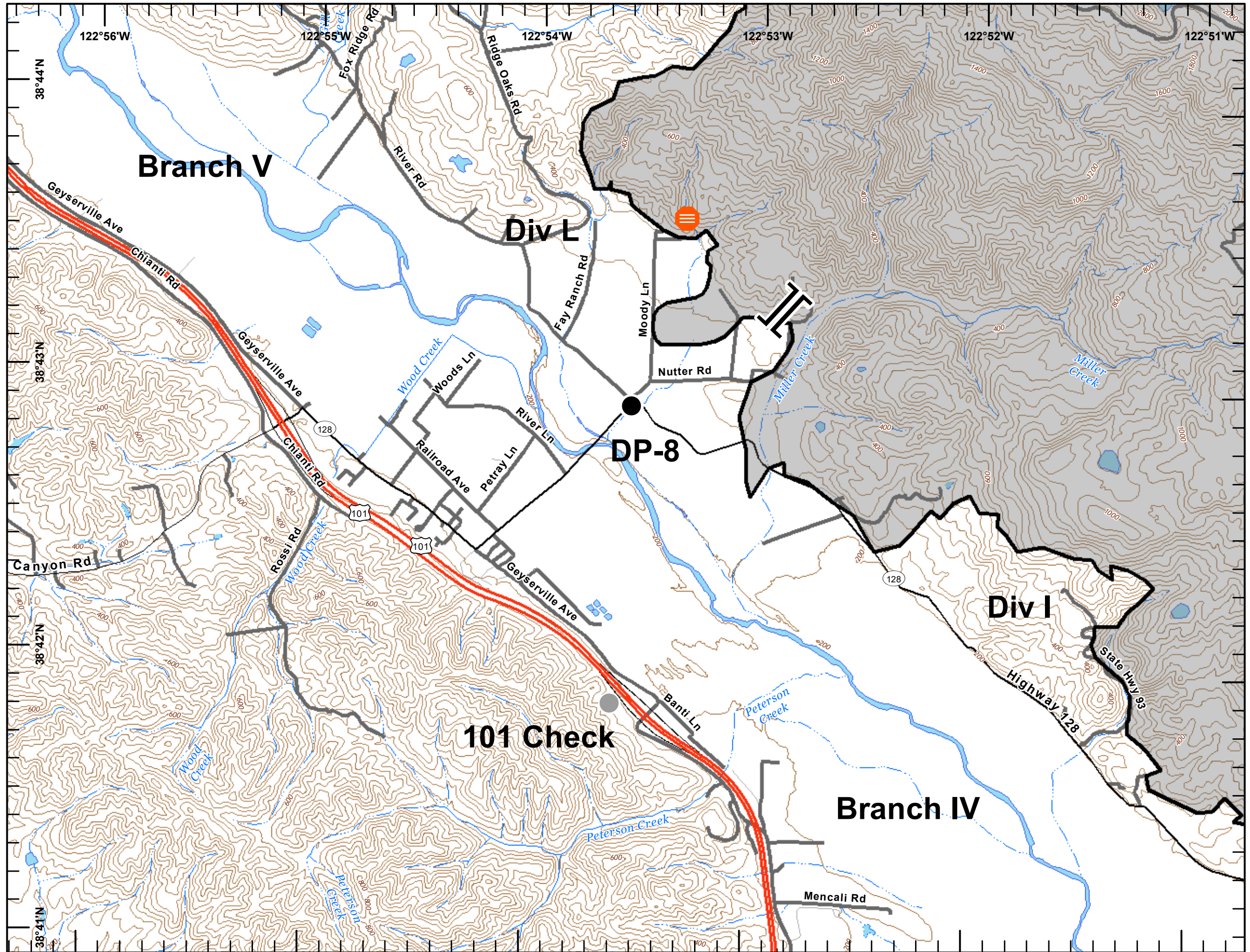
Page 6

-  Completed Line
-  Drop Point
-  Life Safety Hazard
-  Aviation Check
-  Branch Break



DISCLAIMER:
The displayed incident data is approximate and should only be used for informational purposes. The information contained in supporting base layers was generated from GIS data maintained by different sources and agencies and is not necessarily accurate to mapping, surveying or engineering standards.

1:24,000
IMT 6 GIS
November 01, 2019
2205



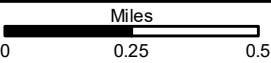
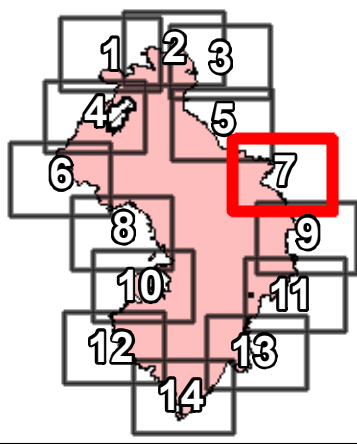
IAP MAP

Kincade Incident
CA-LNU-019376

Nov 2, 2019

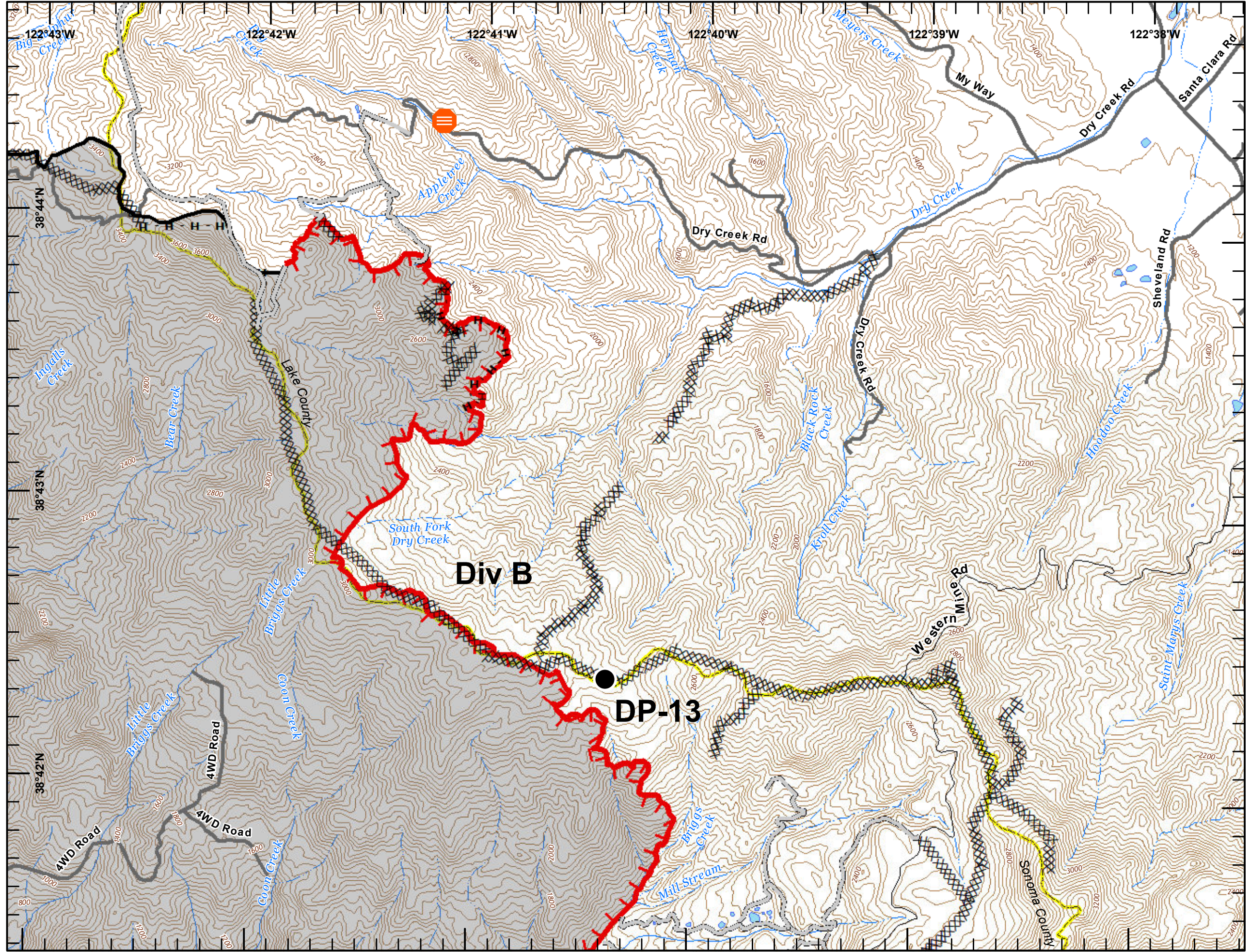
Page 7

-  Uncontrolled Fire Edge
-  Completed Line
-  Completed Dozer Line
-  Completed Hand Line
-  Completed Hand Line
-  Access or Improved Road
-  Drop Point
-  Life Safety Hazard



DISCLAIMER: The displayed incident data is approximate and should only be used for informational purposes. The information contained in supporting base layers was generated from GIS data maintained by different sources and agencies and is not necessarily accurate to mapping, surveying, or engineering standards.

1:24,000
IMT 6 GIS
November 01, 2019
2205



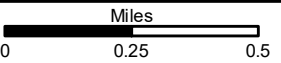
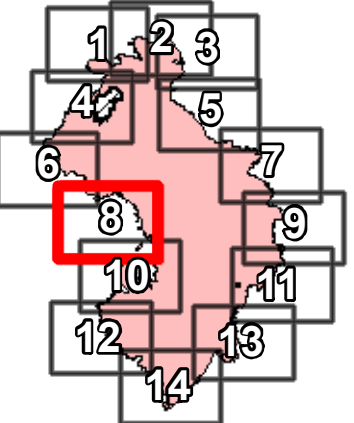
IAP MAP

Kincade Incident
CA-LNU-019376

Nov 2, 2019

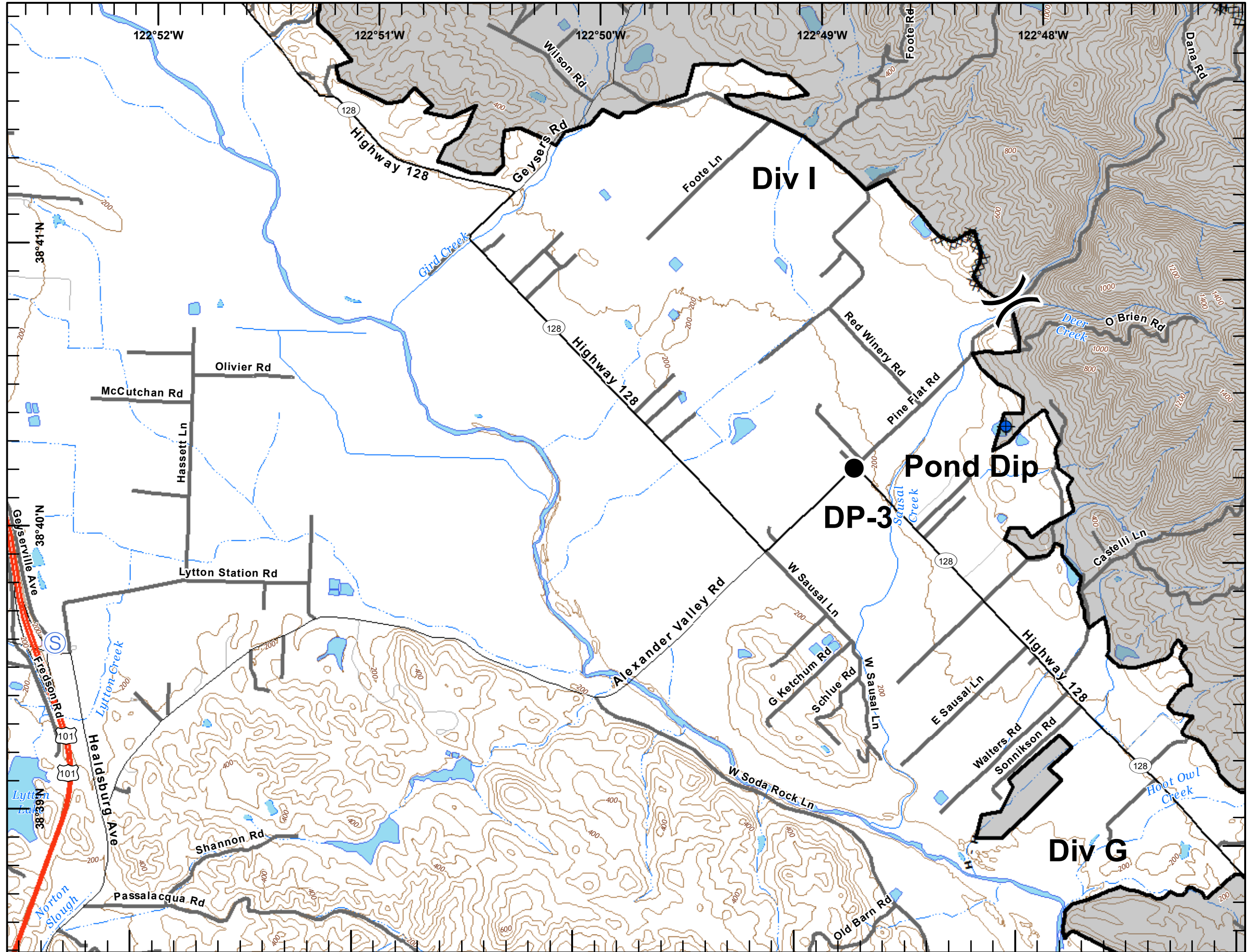
Page 8

- Completed Line
- Completed Dozer Line
- Completed Hand Line
- Dip Site
- Drop Point
- Staging Area
- Division Break



DISCLAIMER: The displayed incident data is approximate and should only be used for informational purposes. The information contained in supporting base layers was generated from GIS data maintained by different sources and agencies and is not necessarily accurate to mapping, surveying or engineering standards.

1:24,000
IMT 6 GIS
November 01, 2019
2206







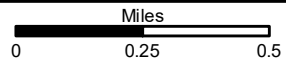
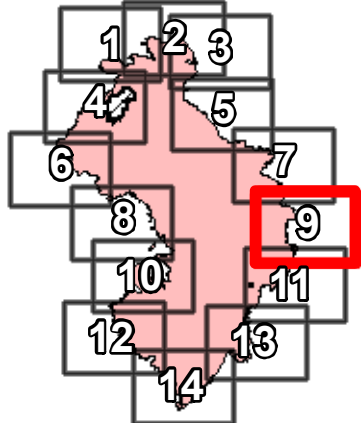
IAP MAP

Kincade Incident
CA-LNU-019376

Nov 2, 2019

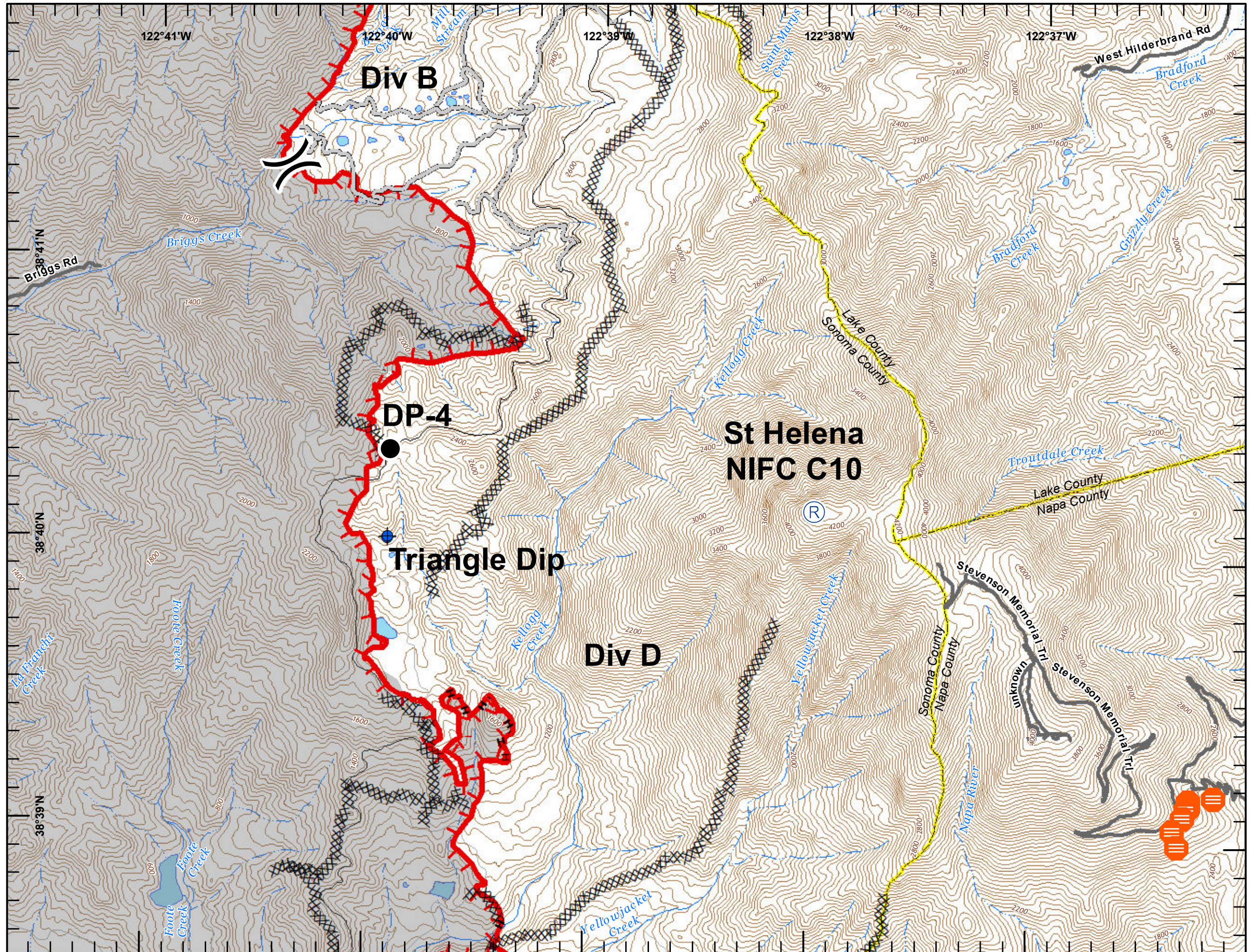
Page 9

-  Uncontrolled Fire Edge
-  Completed Dozer Line
-  Completed Hand Line
-  Access or Improved Road
-  Dip Site
-  Drop Point
-  Repeater
-  Life Safety Hazard
-  Division Break



DISCLAIMER: The displayed incident data is approximate and should only be used for informational purposes. The information contained in supporting base layers was generated from GIS data maintained by different sources and agencies and is not necessarily accurate to mapping, surveying or engineering standards.

1:24,000
IMT 6 GIS
November 01, 2019
2206



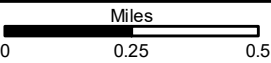
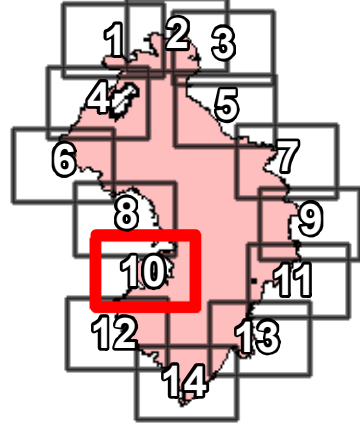
IAP MAP

Kincade Incident
CA-LNU-019376

Nov 2, 2019

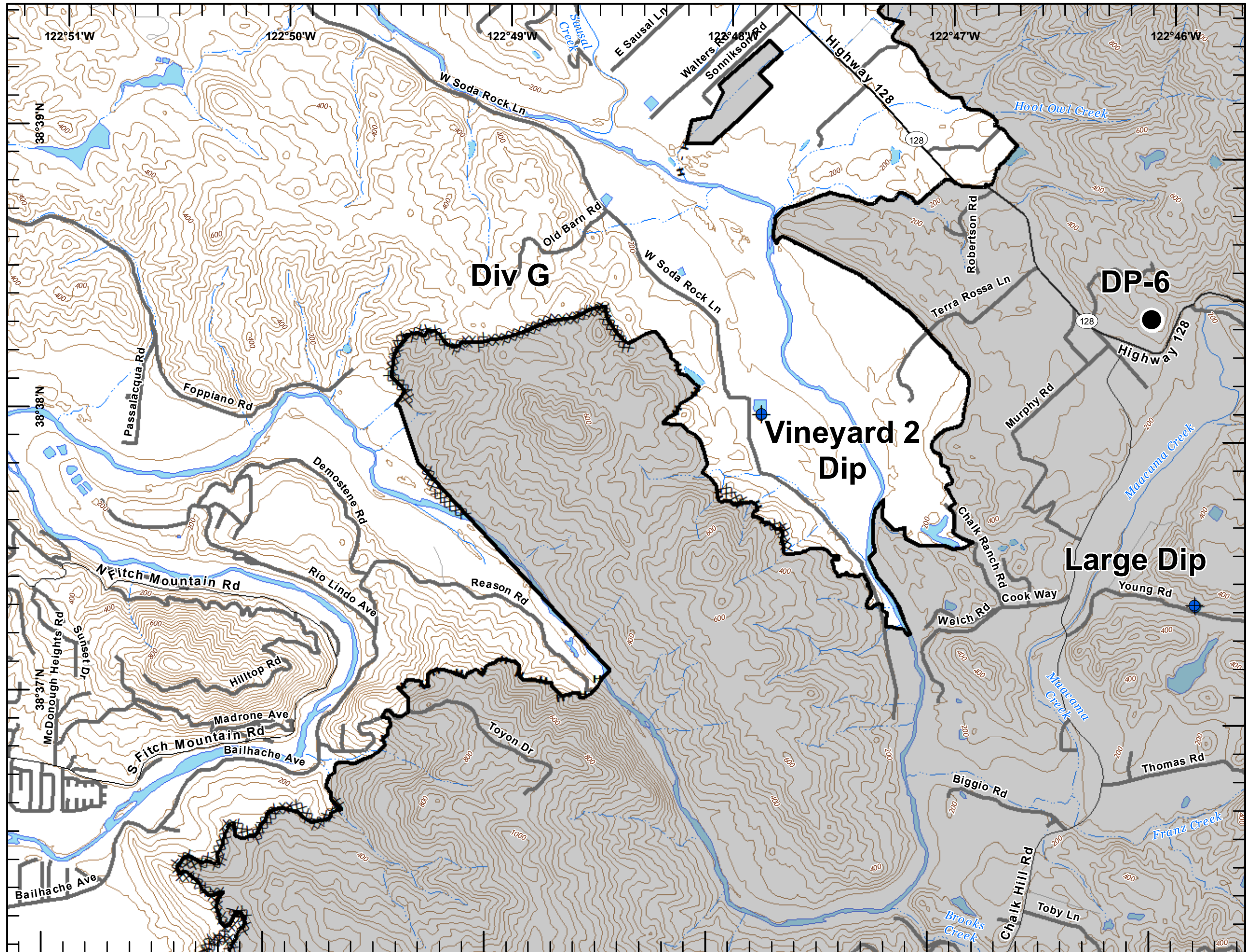
Page 10

- Completed Line
- Completed Dozer Line
- Completed Hand Line
- Dip Site
- Drop Point



DISCLAIMER: The displayed incident data is approximate and should only be used for informational purposes. The information contained in supporting base layers was generated from GIS data maintained by different sources and agencies and is not necessarily accurate to mapping, surveying or engineering standards.

IMT 6 GIS
November 01, 2019
2207



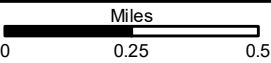
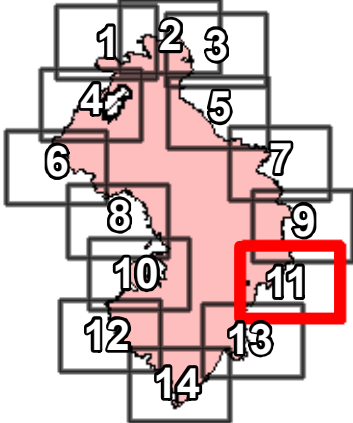
IAP MAP

Kincade Incident
CA-LNU-019376

Nov 2, 2019

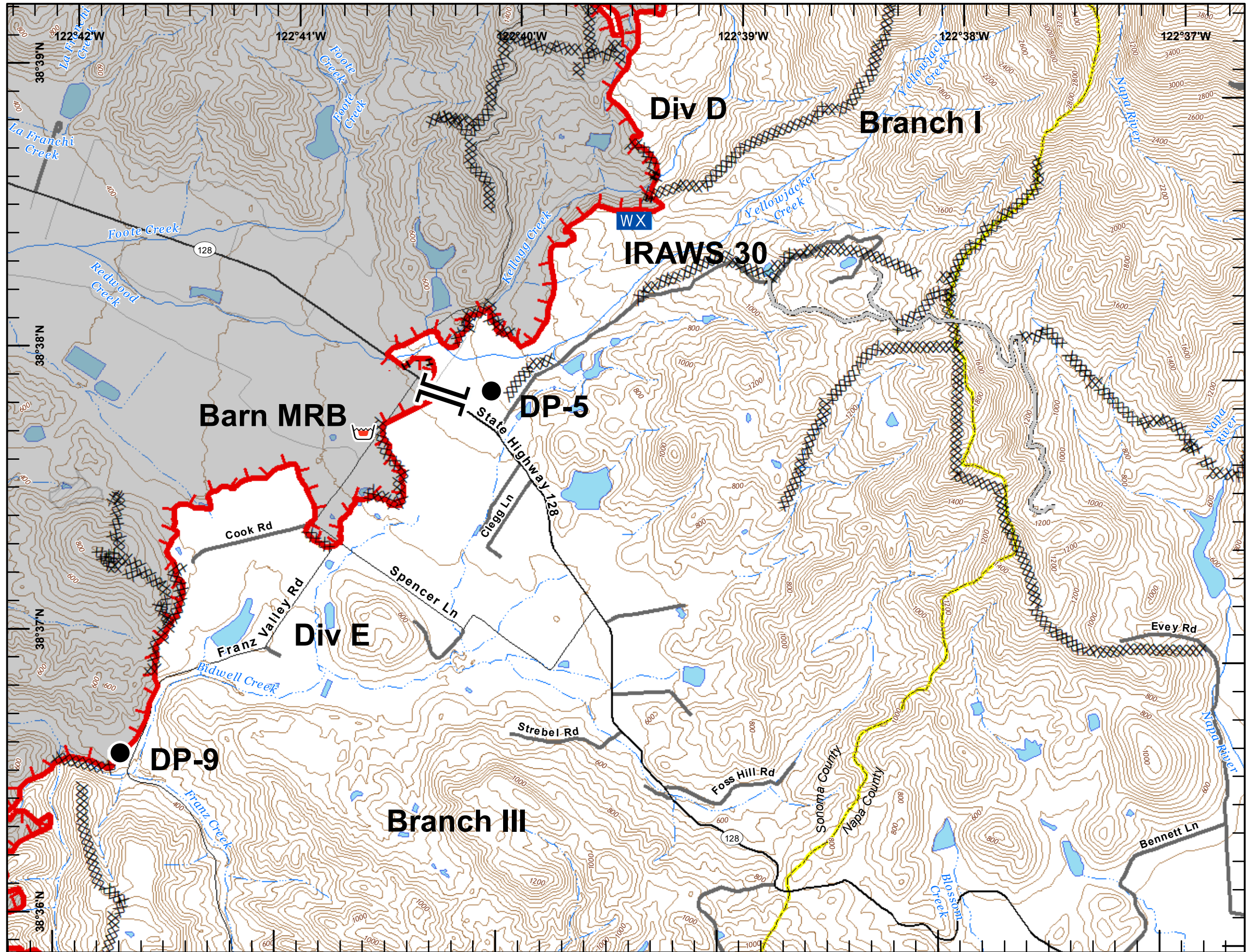
Page 11

- Uncontrolled Fire Edge
- Completed Line
- Completed Dozer Line
- Completed Hand Line
- Access or Improved Road
- Drop Point
- Mobile Weather Unit
- Retardant/Mud Pit
- Branch Break



DISCLAIMER: The displayed incident data is approximate and should only be used for informational purposes. The information contained in supporting base layers was generated from GIS data maintained by different sources and agencies and is not necessarily accurate to mapping, surveying or engineering standards.

1:24,000
IMT 6 GIS
November 01, 2019
2207



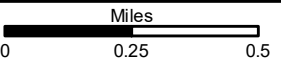
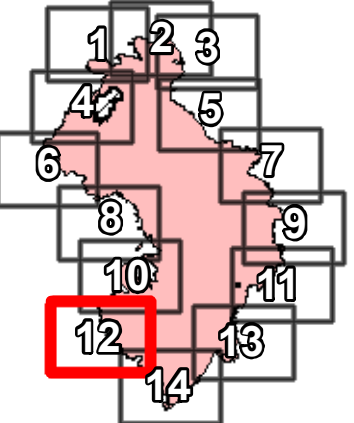
IAP MAP

Kincade Incident
CA-LNU-019376

Nov 2, 2019

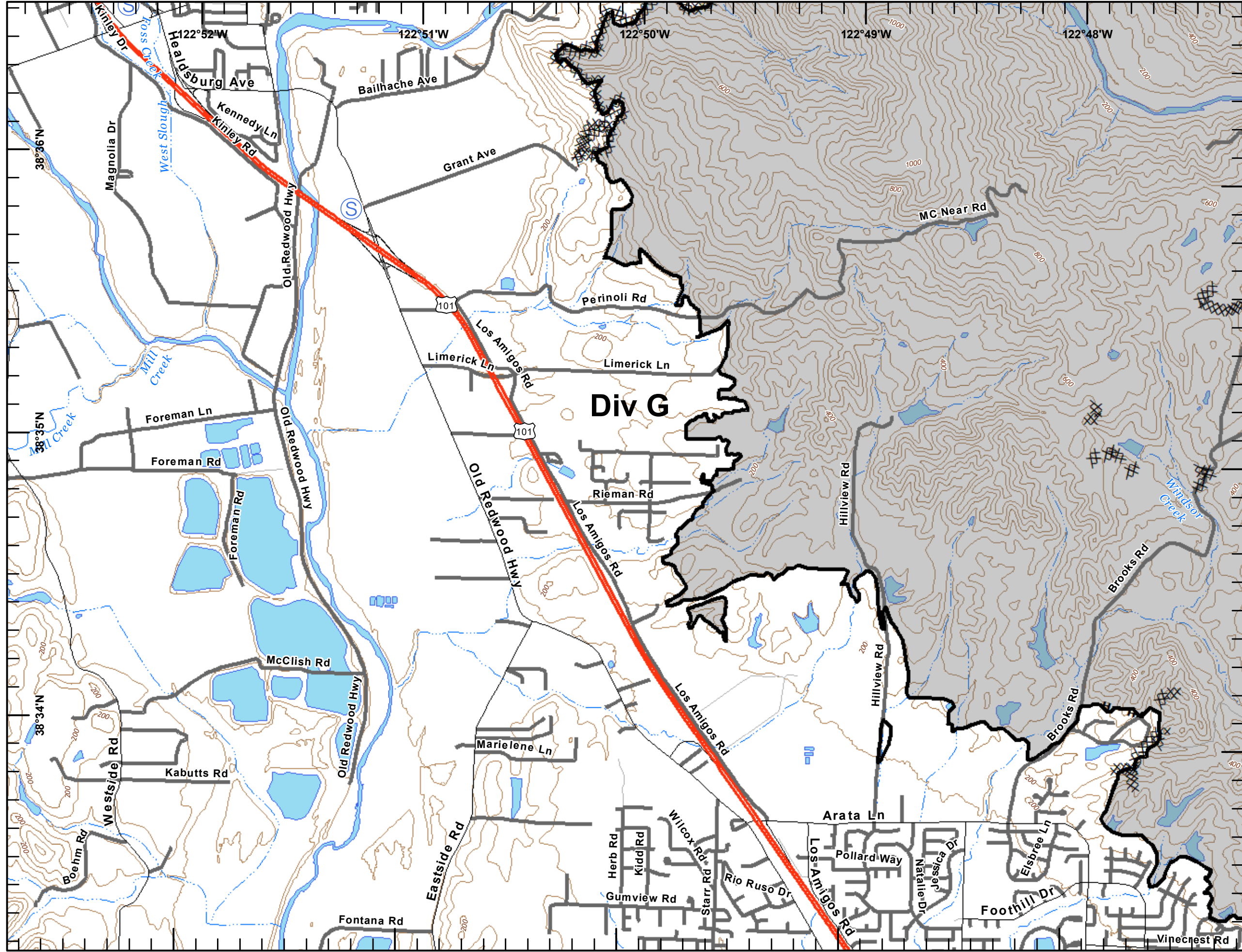
Page 12

- Completed Line
- Completed Dozer Line
- Completed Hand Line
- Staging Area



DISCLAIMER: The displayed incident data is approximate and should only be used for informational purposes. The information contained in supporting base layers was generated from GIS data maintained by different sources and agencies and is not necessarily accurate to mapping, surveying or engineering standards.

1:24,000
IMT 6 GIS
November 01, 2019
2208




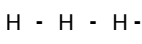






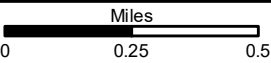
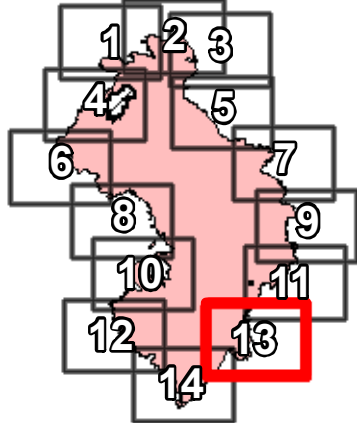
IAP MAP

Kincade Incident
CA-LNU-019376

Nov 2, 2019

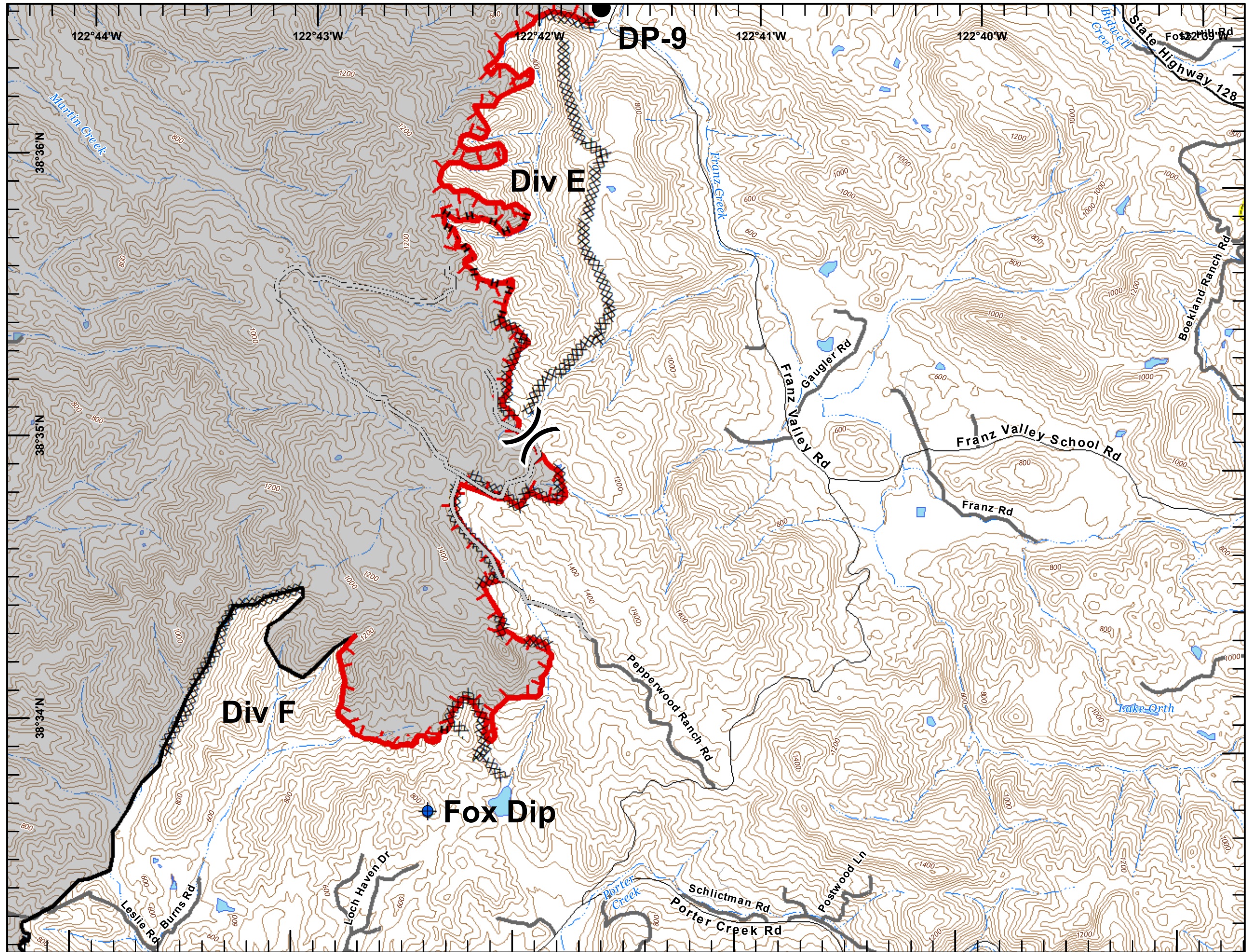
Page 13

-  Uncontrolled Fire Edge
-  Completed Line
-  Completed Dozer Line
-  Completed Hand Line
-  Access or Improved Road
-  Dip Site
-  Drop Point
-  Division Break



DISCLAIMER: The displayed incident data is approximate and should only be used for informational purposes. The information contained in supporting base layers was generated from GIS data maintained by different sources and agencies and is not necessarily accurate to mapping, surveying or engineering standards.

1:24,000
IMT 6 GIS
November 01, 2019
2208



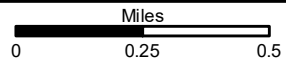
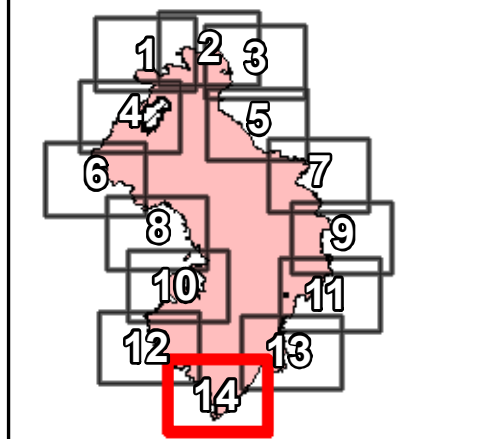
IAP MAP

Kincade Incident
CA-LNU-019376

Nov 2, 2019

Page 14

- Completed Line
- Completed Dozer Line
- Completed Hand Line
- Dip Site
- Drop Point
- Mobile Weather Unit
- Branch Break



DISCLAIMER: The displayed incident data is approximate and should only be used for informational purposes. The information contained in supporting base layers was generated from GIS data maintained by different sources and agencies and is not necessarily accurate to mapping, surveying or engineering standards.

IMT 6 GIS
November 01, 2019
2208

