

INCIDENT ACTION PLAN KINCADE INCIDENT

CA-LNU-019376




Friday

OPERATIONAL PERIOD

10/25/2019 0700
to
10/26/2019 0700



ORGANIZATION ASSIGNMENT LIST (ICS 203)

1. Incident Name: KINGCADE		2. Operational Period: Date From: 10/25/2019		Date To: 10/26/2019	
		Time From: 0700		Time To: 0700	
3. Incident Commander(s) and Command Staff:			7. Operation Section:		
IC/UC's	J. Veik	Operations	J. Ohs		
Deputy		Deputy Operations	T. Ernst / R. Roberts		
Safety Officer	J. Buchmeier	Night Ops	B. Farrell / T. Lubas		
Information Officer	J. Cox	Staging Area			
Liaison Officer	G. Pemberton	Branch	I	M. Turbeville (12hr)	
4. Agency/Organization Representatives:		Division/Group	A		
Agency/Organization	Name	Division/Group	B		
City of Santa Rosa EOC	N. Bregman	Division/Group	D		
Sonoma County EOC	S. Walls / J.Duvall	Division/Group			
Sonoma County Sheriff	A. Mancilla	Division/Group			
Dry Creek Rancheria	M. Epstien	Branch	III	S. Lane (12hr)	
Cal Pines		Division/Group	F		
Western Geo		Division/Group	I		
		Division/Group	L		
BLM	J. Tunnell	Division/Group			
PGE	D. Hotchkiss	Division/Group			
		Branch	V	P. Fleckenstein	
		Division/Group	H		
		Division/Group	M		
		Division/Group	P		
		Division/Group			
		Branch			
		Division/Group			
5. Planning Section:		Division/Group			
Chief	G. Garcia / A. Mitchell	Division/Group			
Deputy	S. DeBenedet	Division/Group			
Resource Unit	D. Scheurich / J. Anderson	Division/Group			
Situation Unit	C. Ingram	Branch			
Documentation Unit		Division/Group			
Demobilization Unit	T. Shevenell	Division/Group			
GISS	T. Knecht	Division/Group			
FBAN	S. Volmer	Division/Group			
IMET		Division/Group			
Training Tech Spec	S. Vargas	Air Operations Branch		Director:	Tom Swanson
		Air Support Group Supervisor		Burke Kremensky	
		Air Tactical Group Supervisor			
		Helibase Manager			
6. Logistics Section					
Chief	S. Dohman				
Supply Unit	P. Lee	8. Finance/Administration Section:			
Facilities Unit	B. Luiz	Chief	S. Hogan		
Ground Support Unit	J. Luckenbach	Time Unit	S. Beck		
Communications Unit	J. Brooks	Procurement Unit	J. Andrade		
Medical Unit	E. Castellanos	Comp/Claims Unit	A. Hagerman		
		Cost Unit	J. Tapia		
Prepared By: Name:	S. DeBenedet	Position/Title:	PSC	Signature:	
ICS 203		Date/Time:	10/24/2019 2300 hours		

Kincade Incident

National Weather Service San Francisco/Monterey Bay Area

2019-10-24 6:32 PM PDT

Spot Forecast for Kincade Incident...Cal Fire LNU...IMT6
National Weather Service San Francisco Bay Area
632 PM PDT Thu Oct 24 2019

Forecast is based on forecast start time of 0600 PDT on October 25.
If conditions become unrepresentative...contact the National Weather Service.

...FIRE WEATHER WATCH & HIGH WIND WATCH IN EFFECT FROM SATURDAY EVENING THROUGH MONDAY MORNING...

.DISCUSSION...Warm and dry conditions will persist on Friday with winds becoming light out of the northwest by the afternoon. Poor humidity recoveries are anticipated again Friday night into Saturday morning with generally light winds. Another strong, offshore wind event arrives Saturday night into Sunday.

.FRIDAY...

Sky/weather.....Sunny. Areas of smoke.
Max temperature.....76-81.
Min humidity.....17 percent.
Wind (20 ft).....Northwest winds 5 to 10 mph.
CWR.....0 percent.
LAL.....1.
Mixing height.....2700 ft AGL.
Transport winds....Northwest around 10 mph.
Marine layer.....None.


.FRIDAY NIGHT...

Sky/weather.....Clear. Areas of smoke.
Min temperature.....52-57.
Max humidity.....27 percent.
Wind (20 ft).....North winds 5 to 10 mph.
CWR.....0 percent.
LAL.....1.
Mixing height.....100 ft AGL.
Transport winds....North around 10 mph.
Marine layer.....None.

\$\$

Forecaster...R_GASS
Requested by...STEPHEN VOLMER FBAN
Type of request...WILDFIRE
.TAG 1917862.2/MTR
.DELDT 10/24/19
.FormatterVersion 1.0.26
.EMAIL stephen.volmer@fire.ca.gov

FIRE BEHAVIOR FORECAST

FORECAST NUMBER: 1	TYPE OF FIRE: Wildland
FIRE NAME: Kincade	OPERATIONAL PERIOD: 10/25-10/26, 0700-0700
DATE ISSUED: 10/24/2019	TIME ISSUED: 2000
UNIT: CA-LNU-019376	SIGNED: 
Typed/printed: Jonathan Pangburn, FBAN (T)	

INPUTS

WEATHER SUMMARY: WARM & DRY, LIGHT NW WINDS

Poor RH recovery.
 Temp: 76-81 max; 52-57 min
 RH: 17% min; 27% max
 Wind: NW 5-10 day; N 5-10 night

OUTPUTS

FIRE BEHAVIOR

GENERAL:

Expect varying windows for direct attack versus indirect, as related to flame lengths and rates of speed, based upon forecast wind and smoke coverage. Moderated fire behavior with onshore wind flow, prior to next offshore wind event.

In the absence of weather conditions outside the forecast or extreme fire behavior conditions expect:

	Max. Flame Length	Max. Rate of Spread	Spotting	Probability of Ignition
Grass	< 5' (1.5 m)	40-60 ft/min (1 km/hr)	< 0.2 mile (0.3 km)	75%
Grass/Shrub Mix	< 5' (1.5 m)	40-60 ft/min (1 km/hr)	< 0.2 mile (0.3 km)	75%
Shrub	< 5' (1.5 m)	40-60 ft/min (1 km/hr)	< 0.2 mile (0.3 km)	75%
Timber Understory	8-15' (2.5-5 m)	10-20 ft/min (0.2-0.4 km/hr)	< 0.3 mile (0.5 km)	75%

****minimum safety zone size is 1/4 acre (0.1 Ha) for a Strike Team of Engines.**

SPECIFIC:

Grass Fuels: Grass fuels will dry out quickly. Fine flashy fuels make for receptive fuel bed.

Shrub Fuels: Short slope driven runs are likely in drainages.

Timber Fuels: Expect isolated runs upslope, and some single tree torching in heavier fuels of Cobb Mountain area. Flame lengths may reach up to 15'.

AIR OPERATIONS:

Anticipate mixed visibility with consumption of fuels and partial shading from smoke.
 Mixing height: 2,700 ft. AGL, Transport winds: NW 10 mph, Sunrise 0731, Sunset 1820.

SAFETY

Changes in fire behavior are often subtly signaled by atmospheric changes that can go unnoticed when firefighters are focused on more tangible effects of fire and terrain.



SAFETY MESSAGE



1. Incident Name: Kincade	2. Operational Period: Date From: 10/25/19 Time From: 07:00	Date To: 10/26/19 Time To: 07:00
3. Safety Message/Expanded Safety Message, Safety Plan, Site Safety Plan:		
<p style="text-align: center;"><u>BRIEF ALL YOUR PERSONNEL ON THE CURRENT DAYS IAP BEFORE ENGAGING IN YOUR DIVISIONAL ASSIGNMENT.</u></p> <ul style="list-style-type: none"> ➤ Stay aware of what is happening around you and adapt your exit strategy accordingly. ➤ Be alert to changes in wind direction and expect changes in fire behavior. ➤ ESTABLISH: LOOKOUTS, COMMUNICATIONS, ESCAPE ROUTES AND SAFETY ZONES. ➤ Hazard trees are present from both fire activity and the wind event. ➤ Beware of environmental hazards such as bee hives, poison oak, trip hazards, steep slopes and stump holes. ➤ Residents, workers and the media are present on the incident. ➤ Monitor your hydration/nutrition intake and keep adequate supplies of each. ➤ Watch for congested roadways and heavy traffic in and around the incident. Maintain a safe following distance. ➤ Geyers resources see included Safety Message with specific items for the site. ➤ No PPE allowed in the eating areas. Wash hands regularly and always before entering the eating areas. <p style="text-align: center;"><u>IF IT'S PREDICTABLE IT'S PREVENTABLE</u></p>		
<p>▪ 4. Site Safety Plan Required? Yes <input type="checkbox"/> No <input checked="" type="checkbox"/></p>		
<p>5. Prepared by: Name: Buchmeier SOF1 / Segura SOF1(T)</p> <div style="display: flex; justify-content: space-between;"> <div data-bbox="81 1871 427 1923">ICS 208</div> <div data-bbox="427 1871 922 1923">Date/Time October 24, 2019 / 1900</div> <div data-bbox="922 1818 1521 1923"></div> </div>		



GEYSERS SAFETY MESSAGE

This Safety Message applies to any resource assigned to the Geysers, in addition to the Kincadee Incident Safety Message.

- ⇒ The Geysers is a power distribution area, assume all power lines are energized. DO NOT CUT ANY DOWN POWERLINES.
- ⇒ Steep winding UNMARKED roads are throughout the Geysers. Drive defensively with headlights on anticipating the unexpected.
- ⇒ The Geysers area contain vertical and horizontal mines shafts, look down for vertical mines and stay away from horizontal mine openings.
- ⇒ Earthquakes are prevalent throughout the Geysers, LOOK OUT for rolling rocks and take earthquake precautions if earthquakes are felt.
- ⇒ Hydrogen Sulfide (H₂S) in parts per million can be hazardous, if available utilize air monitoring equipment to detect for this hazard.
- ⇒ Natural steam vents exist in many areas. DO NOT mistake steam for smoke you may be BURNED.
- ⇒ Reclaimed hydrants are painted PURPLE do not drink water from the hydrant system in the Geysers.
- ⇒ Stay upwind of cooling towers, the steam may contain hazardous materials. Use DEFENSIVE tactics on cooling tower fires.

Joe Buchmeier SOF1 IMT 6

A blue ink signature of Joe Buchmeier.

Lookouts

Communications

Escape Routes

Safety Zones



INCIDENT RISK ANALYSIS ICS 215A



BRANCH	HAZARDOUS ACTIONS/ CONDITIONS	MITIGATIONS/WARNINGS/REMEDIES									
ALL	FIRE AND DROUGHT WEAKENED TREES	<ul style="list-style-type: none"> • Follow Hazard Tree Safety Guidelines (IRPG p. 22). • Many of the trees within the fire area and along roadways are stressed due to fire activity and the wind event. 									
ALL	GEYSERS FACILITY	<ul style="list-style-type: none"> • See specific safety message for the Geysers site. • Use caution when working at the Geysers. 									
ALL	DRIVING HAZARDS	<ul style="list-style-type: none"> • Watch your speeds. 5mph in base camp. • Expect the unexpected. • Maintain appropriate speed for the current road conditions. 									
ALL	CIVILIAN PRESENCE	<ul style="list-style-type: none"> • Be aware of an increased in civilian presence around the fire area. 									
ALL	FIRING	<ul style="list-style-type: none"> • Ensure adequate personnel and resources are available for the operation. 									
ALL	WEATHER	<ul style="list-style-type: none"> • Watch for changing weather conditions. 									
ALL	PERSONNEL SAFETY	<ul style="list-style-type: none"> • All personnel are responsible for their personal safety. • Be sure to wear all required PPE while on the fire line. • Maintain good personal hygiene. 									
ALL	POWER LINES	<ul style="list-style-type: none"> • Follow Power Line safety guidelines (IRPG pg.24) • Treat all downed power lines as energized. 									
ALL	HYDRATION	<ul style="list-style-type: none"> • Drink water before, during and after each shift. • Be alert for signs of heat stress in yourself and others. 									
ALL	FATIGUE	<ul style="list-style-type: none"> • Monitor incoming and outgoing resources for level of fatigue. • Provide sufficient rest during the work cycle. 									
ALL	WILDLAND URBAN INTERFACE	<ul style="list-style-type: none"> • Review IRPG (pg. 12-16) • Scout driveways prior to committing to them. • Triage structures and placard as necessary. 									
ALL	COMMUNICATIONS	<ul style="list-style-type: none"> • Check the communication plan for frequency assignments. • Use human repeaters as needed. • Get to high ground for better communications. 									
ALL	BRIEFINGS	<ul style="list-style-type: none"> • Make sure everyone gets a briefing on the plan for the day. • Document this on your ICS 214. 									
ALL	LCES	<ul style="list-style-type: none"> • Ensure that LCES is being utilized. 									
ALL	AIRCRAFT AWARENESS	<ul style="list-style-type: none"> • Be aware of rotor wash when working near helicopters. • Understand that hazard trees may react to helicopters overhead. • Monitor assigned aircraft frequencies. 									
ALL	MINE SHAFT / ARCH SITES	<ul style="list-style-type: none"> • Be aware of possible mine shafts in the area. • Flag area and notify supervisor if found. • Possible hazardous materials in and around shafts. 									
ALL	REBURN POTENTIAL	<ul style="list-style-type: none"> • Recognize the environment that you are working in. • Evaluate the potential for reburn in your work area. 									
Incident Name: Kincade		<table border="0" style="width: 100%;"> <tr> <td style="width: 33%;">Date Prepared:</td> <td style="width: 33%;">10/24/2017</td> <td style="width: 33%;">Operational Period:</td> </tr> <tr> <td>Prepared by:</td> <td>Joe Buchmeier</td> <td>10/25/2019 –10/26/2017</td> </tr> <tr> <td></td> <td>SOF1 </td> <td>0700-0700</td> </tr> </table>	Date Prepared:	10/24/2017	Operational Period:	Prepared by:	Joe Buchmeier	10/25/2019 –10/26/2017		SOF1	0700-0700
Date Prepared:	10/24/2017	Operational Period:									
Prepared by:	Joe Buchmeier	10/25/2019 –10/26/2017									
	SOF1	0700-0700									

ASSIGNMENT LIST (ICS 204 WF)

CONTROLLED UNCLASSIFIED
INFORMATION//BASIC

1. Incident Name: <p style="text-align: center; font-weight: bold;">KINCADE</p>	2. Operational Period: Date From: 10/25/19 Date To: 10/26/19 Time From: 0700 Time To: 0700	3. Branch Division <p style="text-align: center; font-size: 2em; font-weight: bold;">I A</p>
---	---	--

4. Operations Personnel:		Page 1 of 1 Alpha
Operations Section Chief: J. Ohs Branch Director: M. Turbeville (12hr) Division/Group Supervisor:	Night Ops: B. Farrell / T. Lubas Branch Safety: Air Attack:	

5. Resources Assigned:	** Resources Below in Bold are 12 Hour **							
Resource Identifier	ALS	LWD	Leader	Personnel	Request #	Hours	Reporting Location	
STC						0700	ICP	
STG						0700	ICP	
STG						0700	ICP	
STG						0700	ICP	
STG						0700	ICP	
STG						0700	ICP	
STG						0700	ICP	
STL SCU 9160L			M. Milovich	5	E-25	0700	ICP	
STL						0700	ICP	
STL						0700	ICP	
STL						0700	ICP	
WT PVT E-50			F. Lutz	2	E-50	0700	ICP	
WT						0700	ICP	

6. Work Assignments:
 Construct and hold line utilizing direct tactics.
 Improve direct fire line.
 Mop up 100' from control line.

7. Special Instructions:

8. Communications							
Name	Ch	Function	Rx Freq	Rx Tone	Tx Freq	Tx Tone	Notes
CDF C6	1	COMMAND	151.2500	103.5 (T8)	159.3600	151.4 (T14)	GEYSER PEAK TONE 14
CDF T26	5	TACTICAL	159.2925	192.8 (T16)	159.2925	192.8 (T16)	BRANCH I
CDF T24	14	AIR TO GROUND	151.3325	192.8 (T16)	151.3325	192.8 (T16)	AIR TO GROUND
CALCORD	15	MEDICAL	156.0750	156.7 (T6)	156.0750	156.7 (T6)	EMERGENCY COORDINATIO
GUARD25	16	EMERGENCY	168.6250	CSQ	168.6250	110.9 (T1)	EMERGENCY USE ONLY

9. Prepared by: Name: D. Scheurich / J. Anderson RESL
 Signature:

ICS 204 Date/Time: 10/24/2019 2200

ASSIGNMENT LIST (ICS 204 WF)

CONTROLLED UNCLASSIFIED
INFORMATION//BASIC

1. Incident Name: <p style="text-align: center; font-weight: bold;">KINCADE</p>	2. Operational Period: Date From: 10/25/19 Date To: 10/26/19 Time From: 0700 Time To: 0700	3. Branch Division <p style="text-align: center; font-size: 2em; font-weight: bold;">I B</p> <p style="text-align: center;">Page 1 of 1 Bravo</p>
---	---	---

4. Operations Personnel: Operations Section Chief: J. Ohs Branch Director: M. Turbeville (12hr) Division/Group Supervisor:		Night Ops: B. Farrell / T. Lubas Branch Safety: Air Attack:
--	--	--

5. Resources Assigned:	** Resources Below in Bold are 12 Hour **						
Resource Identifier	ALS	LWD	Leader	Personnel	Request #	Hours	Reporting Location
STC						0700	ICP
STC						0700	ICP
STC						0700	ICP
STC						0700	ICP
STG						0700	ICP
STG						0700	ICP
STG						0700	ICP
STG						0700	ICP
STL MEU 9118L			K. Taglio	5	E-22	0700	ICP
WT PVT E54					E-54	0700	ICP
WT						0700	ICP
WT						0700	ICP

6. Work Assignments:
Construct and hold line utilizing direct tactics.
Improve direct fire line.
Mop up 100' from control line.

7. Special Instructions:

8. Communications							
Name	Ch	Function	Rx Freq	Rx Tone	Tx Freq	Tx Tone	Notes
CDF C6	1	COMMAND	151.2500	103.5 (T8)	159.3600	151.4 (T14)	GEYSER PEAK TONE 14
CDF T26	5	TACTICAL	159.2925	192.8 (T16)	159.2925	192.8 (T16)	BRANCH I
CDF T24	14	AIR TO GROUND	151.3325	192.8 (T16)	151.3325	192.8 (T16)	AIR TO GROUND
CALCORD	15	MEDICAL	156.0750	156.7 (T6)	156.0750	156.7 (T6)	EMERGENCY COORDINATIO
GUARD25	16	EMERGENCY	168.6250	CSQ	168.6250	110.9 (T1)	EMERGENCY USE ONLY

9. Prepared by: Name: D. Scheurich / J. Anderson RESL
Signature:

ICS 204

Date/Time: 10/24/2019 2200

ASSIGNMENT LIST (ICS 204 WF)

CONTROLLED UNCLASSIFIED
INFORMATION/BASIC

1. Incident Name: <p style="text-align: center; font-weight: bold;">KINCADE</p>	2. Operational Period: Date From: 10/25/19 Date To: 10/26/19 Time From: 0700 Time To: 0700	3. Branch Division <p style="text-align: center; font-weight: bold;">III F</p>
---	---	--

4. Operations Personnel: Operations Section Chief: J. Ohs Branch Director: S. Lane (12hr) Division/Group Supervisor:	Night Ops: B. Farrell / T. Lubas Branch Safety: Air Attack:
--	--

5. Resources Assigned:	** Resources Below in Bold are 12 Hour **						
Resource Identifier	ALS	LWD	Leader	Personnel	Request #	Hours	Reporting Location
STC						0700	ICP
STC						0700	ICP
STC						0700	ICP
STC						0700	ICP
STG						0700	ICP
STG						0700	ICP
WT PVT E-49			H. Spurlock	2	E-49	0700	ICP
WT PVT E-55					E-55	0700	ICP
FALM						0700	ICP

6. Work Assignments:
Construct and hold line utilizing direct tactics.
Improve direct fire line.
Mop up 100' from control line.

7. Special Instructions:

8. Communications

Name	Ch	Function	Rx Freq	Rx Tone	Tx Freq	Tx Tone	Notes
CDF C6	1	COMMAND	151.2500	103.5 (T8)	159.3600	151.4 (T14)	GEYSER PEAK TONE 14
CDF T27	6	TACTICAL	159.3075	192.8 (T16)	159.3075	192.8 (T16)	BRANCH III
CDF T24	14	AIR TO GROUND	151.3325	192.8 (T16)	151.3325	192.8 (T16)	AIR TO GROUND
CALCORD	15	MEDICAL	156.0750	156.7 (T6)	156.0750	156.7 (T6)	EMERGENCY COORDINATIO
GUARD25	16	EMERGENCY	168.6250	CSQ	168.6250	110.9 (T1)	EMERGENCY USE ONLY

9. Prepared by: Name: D. Scheurich / J. Anderson RESL

Signature:

ICS 204 Date/Time: 10/24/2019 2200

ASSIGNMENT LIST (ICS 204 WF)

CONTROLLED UNCLASSIFIED
INFORMATION/BASIC

1. Incident Name: <p style="text-align: center;">KINCADE</p>	2. Operational Period: Date From: 10/25/19 Date To: 10/26/19 Time From: 0700 Time To: 0700	3. Branch <p style="text-align: center;">V</p>	Division <p style="text-align: center;">H</p>
---	---	---	--

4. Operations Personnel: Operations Section Chief: J. Ohs Branch Director: P. Fleckenstein Division/Group Supervisor:	Night Ops: B. Farrell / T. Lubas Branch Safety: Air Attack:
---	--

5. Resources Assigned:		** Resources Below in Bold are 12 Hour **					
Resource Identifier	ALS	LWD	Leader	Personnel	Request #	Hours	Reporting Location
STC						0700	ICP
STC						0700	ICP
STG						0700	ICP
STG						0700	ICP
STG						0700	ICP
WT PVT E-52					E-52	0700	ICP
WT						0700	ICP

6. Work Assignments:
 Construct and hold line utilizing direct tactics.
 Improve direct fire line.
 Mop up 100' from control line.

7. Special Instructions:

8. Communications

Name	Ch	Function	Rx Freq	Rx Tone	Tx Freq	Tx Tone	Notes
CDF C6	1	COMMAND	151.2500	103.5 (T8)	159.3600	151.4 (T14)	GEYSER PEAK TONE 14
CDF T31	9	TACTICAL	159.3825	192.8 (T16)	159.3825	192.8 (T16)	BRANCH V
CDF T24	14	AIR TO GROUND	151.3325	192.8 (T16)	151.3325	192.8 (T16)	AIR TO GROUND
CALCORD	15	MEDICAL	156.0750	156.7 (T6)	156.0750	156.7 (T6)	EMERGENCY COORDINATIO
GUARD25	16	EMERGENCY	168.6250	CSQ	168.6250	110.9 (T1)	EMERGENCY USE ONLY

9. Prepared by: Name: D. Scheurich / J. Anderson RESL

Signature:

ICS 204 Date/Time: 10/24/2019 2200

ASSIGNMENT LIST (ICS 204 WF)

CONTROLLED UNCLASSIFIED
INFORMATION//BASIC

1. Incident Name: <p style="text-align: center; font-weight: bold;">KINCADE</p>	2. Operational Period: Date From: 10/25/19 Date To: 10/26/19 Time From: 0700 Time To: 0700	3. Branch Division <p style="text-align: center; font-size: 2em; font-weight: bold;">V M</p> <p style="text-align: center;">Page 1 of 1 Mike</p>
---	---	---

4. Operations Personnel: Operations Section Chief: J. Ohs Branch Director: P. Fleckenstein Division/Group Supervisor:	Night Ops: B. Farrell / T. Lubas Branch Safety: Air Attack:
---	--

5. Resources Assigned:	** Resources Below in Bold are 12 Hour **							
Resource Identifier	ALS	LWD	Leader	Personnel	Request #	Hours	Reporting Location	
STC						0700	ICP	
STC						0700	ICP	
STC						0700	ICP	
STG						0700	ICP	
STG						0700	ICP	
DOZ MEU 1145						0700	ICP	
DOZ LMU 1447						0700	ICP	
DOZ LMU 1448						0700	ICP	
DOZ PVT E-28			D. Smith	2	E-28	0700	ICP	
WT						0700	ICP	
WT						0700	ICP	
WT						0700	ICP	

6. Work Assignments:
Construct and hold line utilizing direct tactics.
Improve direct fire line.
Mop up 100' from control line.

7. Special Instructions:

8. Communications							
Name	Ch	Function	Rx Freq	Rx Tone	Tx Freq	Tx Tone	Notes
CDF C6	1	COMMAND	151.2500	103.5 (T8)	159.3600	151.4 (T14)	GEYSER PEAK TONE 14
CDF T32	10	TACTICAL	151.2425	192.8 (T16)	151.2425	192.8 (T16)	BRANCH V
CDF T24	14	AIR TO GROUND	151.3325	192.8 (T16)	151.3325	192.8 (T16)	AIR TO GROUND
CALCORD	15	MEDICAL	156.0750	156.7 (T6)	156.0750	156.7 (T6)	EMERGENCY COORDINATIO
GUARD25	16	EMERGENCY	168.6250	CSQ	168.6250	110.9 (T1)	EMERGENCY USE ONLY

9. Prepared by: Name:	D. Scheurich / J. Anderson	RESL	Signature:
------------------------------	----------------------------	------	------------

ICS 204	Date/Time: 10/24/2019 2200
----------------	----------------------------

ASSIGNMENT LIST (ICS 204 WF)

CONTROLLED UNCLASSIFIED
INFORMATION/BASIC

1. Incident Name: <p style="text-align: center; font-weight: bold;">KINCADE</p>	2. Operational Period: Date From: 10/25/19 Date To: 10/26/19 Time From: 0700 Time To: 0700	3. Branch Division <p style="text-align: center; font-size: 2em; font-weight: bold;">V P</p> <p style="text-align: center; font-weight: bold;">Page 1 of 1 Papa</p>
---	---	--

4. Operations Personnel: Operations Section Chief: J. Ohs Branch Director: P. Fleckenstein Division/Group Supervisor:	Night Ops: B. Farrell / T. Lubas Branch Safety: Air Attack:
---	--

5. Resources Assigned:		** Resources Below in Bold are 12 Hour **					
Resource Identifier	ALS	LWD	Leader	Personnel	Request #	Hours	Reporting Location
STC						0700	ICP
STC						0700	ICP
STC						0700	ICP
STC						0700	ICP
STG						0700	ICP
STG						0700	ICP
STG						0700	ICP
STG						0700	ICP
STL						0700	ICP
DOZ PVT E-17						0700	ICP
DOZ PVT E-19						0700	ICP
DOZ PVT E-29			P. Lowrey	2	E-29	0700	ICP
DOZ PVT E-26						0700	ICP

6. Work Assignments:
 Construct and hold line utilizing direct tactics.
 Improve direct fire line.
 Mop up 100' from control line.

7. Special Instructions:

8. Communications							
Name	Ch	Function	Rx Freq	Rx Tone	Tx Freq	Tx Tone	Notes
CDF C6	1	COMMAND	151.2500	103.5 (T8)	159.3600	151.4 (T14)	GEYSER PEAK TONE 14
VFIRE 25	11	TACTICAL	154.2875	156.7 (T6)	154.2875	156.7 (T6)	BRANCH V
CDF T24	14	AIR TO GROUND	151.3325	192.8 (T16)	151.3325	192.8 (T16)	AIR TO GROUND
CALCORD	15	MEDICAL	156.0750	156.7 (T6)	156.0750	156.7 (T6)	EMERGENCY COORDINATIO
GUARD25	16	EMERGENCY	168.6250	CSQ	168.6250	110.9 (T1)	EMERGENCY USE ONLY

9. Prepared by: Name:	D. Scheurich / J. Anderson	RESL	Signature:
------------------------------	----------------------------	------	------------

ICS 204	Date/Time: 10/24/2019 2200
----------------	----------------------------

AIR OPERATIONS SUMMARY ICS-220

Incident Name / Number
KINCADE / CA-LNU-019376

Sunrise Startup 731 801
Cutoff 1751
Sunset 1821

General Remarks, Safety Notes, Hazards, Air Operations Special Equipment, etc.
TRACK ALL DIPSITE LOCATIONS / NUMBER OF DIPS / GALLONS TAKEN.
TRACK ALL DROP LOCATIONS / NUMBER OF DROPS / GALLONS DROPPED
ALL GPS DATA TO BE COLLECTED IN DEGREES, MINUTES, DECIMAL MINUTES, FORMAT.

*AVOID Aerial Application of Retardant / Foam / Agent within 300' of Waterways, Bodies of Water, etc.
If Retardant / Foam / Agent is Dropped Within These Areas Immediately Notify the AOB/D and Provide the Following Information: Lat / Long, Estimated Number of Gallons and a Map Detailing The Area.*

Frequencies	TX	Tone	RX	Tone	AM / FM
Command	159.3800	151.4 (T14)	151.2500	103.5 (T8)	FM
AIR / GROUND - TACTICAL	151.3325	192.8000	151.3325	192.8 (T16)	FM
AIR/AIR ROTARY WING	123.1750		123.1750		AM
Helico Briefing					
AIR TACTICS	166.6125		166.6125		FM
Air Attack Briefing	118.4250		118.4250		AM
TOLC	123.0250		123.0250		AM
DECK	163.1000		163.1000		FM
CALCORD - MEDICAL	156.0750	156.7 (6)	156.0750	156.7 (6)	FM
AIRGUARD - Emergency Only	168.6250	110.9 (1)	168.6250		FM

HELICOPTERS (Use page 2 if Needed)

FAA #	Type	Make/Model	Helibase	Avail	Start	Remarks
805PJ	I	UH-60A	Cloverdale	0830	0800	Bucket
2CK	I	S-61	Cloverdale	0830	0800	Tank
3CK	I	S-61	Cloverdale	0830	0800	Tank
3SS	I	S-64	Cloverdale	0830	0800	Tank
92HT	I	S-64	Cloverdale	0830	0800	Tank
7PJ	II	205++	Cloverdale	0830	0800	Restricted
2AH	II	212	Cloverdale	0830	0800	Standard
5TK	II	205	Cloverdale	0830	0800	Standard
1NE	II	205	Cloverdale	0830	0800	Restricted
902	II	205	Cloverdale	0830	0800	Holist
4SH	III	A-Star	Cloverdale	0830	0800	Helico/Recon
7AC	III	407	Cloverdale	0830	0800	Helico/Recon

FIXED WING (Use Page 2 if Needed)

FAA #	Type	Make/Model	Base	Avail	Start	Remarks
AA503		A200CT	Santa Rosa	800	800	
AA140		OV-10	Santa Rosa	800	800	
AA505		OV-10D	MCC	800	800	ASM - Charlie
T85	III	S-2	Santa Rosa	800	800	
T86	III	S-2	Santa Rosa	800	800	

Time Prepared
2100
Shutdown
1851

Helibase Information
Name Cloverdale
Latitude 38.46.34N
Longitude 122.59.33W

Name
Latitude
Longitude
(use page 2 if needed)

TFR Information
Request #
Radius: 7 NM
Altitude: 8,000 MSL
Centerpoint: Polygon Lat Long
NOTAMS: 9/1746
Frequency 123.1750
<http://tfr.faa.gov/tfr2/list.html>

Name	Position	Phone	Trainee
Tom Swanson	AOBD	805.903.3419	
Burke Kremensky	ASGS	619.592.9122	
Kody Hill	HEBIM	530.917.1438	
Mike Deacon	HLCO	530.708.2716	
Paul Karpus	HLCO	209.743.7275	
Jake Serrano	ATGS	707.322.4295	
Nick Welch	ATGS	707.484.5080	
Tim Steponovich	ASM	323.819.5389	

Rescue Ship Information
Day Holist
Name 902
Phone Communications
Make/Model 205A1++
Location Cloverdale
Request Procedure for These Aircraft:
Incident Communications
See Medical Plan For Additional Info

Date Prepared
Thursday, October 24, 2019
Operational Period - Date
Friday October 25, 2019

Prepared By
Tom Swanson
Operational Period - Time
0700-0700

MEDICAL PLAN (ICS 206)

1. Incident Name: <p style="text-align: center;">KINCADE</p>		2. Operational Period: Date From: 10/25/19 Date To: 10/26/19 Time From: 0700 Time To: 0700					
3. Medical Aid Stations:							
Name	Location	Contact Number/Freq	Paramedics				
CalMAT	Base Camp		<input type="checkbox"/> No				
4. Transportation (indicate air or ground):							
Ambulance Service	Location	Contact Number	Level of Service				
Cloverdale Dist. Ambulance #645	209 N. Main Street, Cloverdale	707-894-5862	ALS				
Bells Ambulance #685	438 Powell Ave. Healdsburg, CA 95448	707-433-1114	BLS				
Coast Life Support	38901 Ocean Dr Gualala, CA 95445	707-894-1216	ALS				
REACH Air Ambulance	2360 Becker Blvd Santa Rosa, CA 95403	800-338-4045	ALS				
AMR- Santa Rosa	930 "A" St. Santa Rosa, Ca 95404	707-9345-7200	ALS				
5. Hospitals:							
Hospital Name	Address,	Contact Number(s)/ Frequency	Travel Time		Trauma Center	Burn Center	Helipad
	Lat & Long Helipad		Air	Ground			
Healdsburg District Hospital	1375 University Ave Healdsburg, CA 95448	707-431-6300	15 min.	30 min	Level 4	<input type="checkbox"/>	<input type="checkbox"/>
Santa Rosa Memorial	1165 Montgomery Dr. Santa Rosa, CA 95405	707-525-5300	12 min	30 min	Level 2	<input type="checkbox"/>	<input checked="" type="checkbox"/>
Sutter Santa Rosa	30 Mark West Springs Rd. Santa Rosa, Ca 95403	707-576-4040	12 min	30 min	Level 4	<input type="checkbox"/>	<input checked="" type="checkbox"/>
UC Davis Med Center	2315 Stockton Blvd Sacramento, CA	916-734-7122	30 min	4 hrs	Level 1	<input checked="" type="checkbox"/>	<input checked="" type="checkbox"/>
Sutter Lakeside	5176 Hill Rd. East Lakeport, Ca	707-263-8317	20 min	60 min	Level 4	<input type="checkbox"/>	<input type="checkbox"/>
6. Special Medical Emergency Procedures							
Line Emergency Crew Supervisor will contact Division Supervisor with patient complaint/condition and location. - Division Group Supervisor Contacts: 1. Closest EMS resource 2. Communications Unit - Communications Unit Contacts: 1. Ground or Air ambulance as requested. 2. Operations 3. Safety 4. Medical Unit - Division Supervisor or designee will serve as point of contact and run medical emergency on assigned channel. 1. A pre-assigned tactical frequency (i.e. CALCORD) should be used for IWJ and only for duration of the emergency. - Communications Unit will clear the Command channel for emergency traffic as needed for duration of the need.				Injury Reporting Procedures Nature of Injury: _____ Location of Patient: _____ Point of Contact: _____ Transportation Requested by: Air ___ Ground ___ Point of Pick-Up: _____ Lat: _____ Long: _____ Patient Unit ID: _____ Is an EMT with Patient: Yes ___ No ___ Age: _____ Sex: Male ___ Female ___			
Camp Emergency Contact Medical Unit with patient complaint/condition and location. Medical staff will respond to stabilize the patient. - Medical Unit contacts 1. Communications 2. Safety 3. Logistics 4. Operations 5. Crew Supervisor 6. Comp/Claims				All Emergencies - Secure the area and identified witnesses for later investigation. Keep accurate log of events.			
<input type="checkbox"/> Check box if aviation assets are utilized for rescue. If assets are used, coordinate with Air Operations.							
7. Prepared by (Medical Unit Leader): <p style="text-align: center;">Eric Castellanos (MEDL)</p>				Signature:			
8. Approved by (Safety Officer): <p style="text-align: center;">Jorge Segura (SOF1)</p>				Signature:			
ICS 206		Date/Time:		10/24/2019 18:45			

ICS 205 - INCIDENT RADIO COMMUNICATIONS PLAN

1. Incident Name: KINCADE
Incident Channels
2. Date/Time Prepared Date: 10/24/2019 Time: 1930
3. Operational Period: Date From: 10/25/19 Time From: 0700 Date To: 10/26/19 Time To: 0700

4. Communications		Assigned To	Rx Freq	Rx Tone	Tx Freq	Tx Tone	Notes
Ch#	Function	Name					
1	COMMAND	CDF C6	151.2500	103.5 (T8)	159.3600	151.4 (T14)	GEYSER PEAK TONE 14
2							
3							
4							
5	TACTICAL	CDF T26	159.2925	192.8 (T16)	159.2925	192.8 (T16)	BRANCH I
6	TACTICAL	CDF T27	159.3075	192.8 (T16)	159.3075	192.8 (T16)	BRANCH III
7	TACTICAL	CDF T29	151.3475	192.8 (T16)	151.3475	192.8 (T16)	BRANCH III
8	TACTICAL	CDF T30	151.3925	192.8 (T16)	151.3925	192.8 (T16)	BRANCH III
9	TACTICAL	CDF T31	159.3825	192.8 (T16)	159.3825	192.8 (T16)	BRANCH V
10	TACTICAL	CDF T32	151.2425	192.8 (T16)	151.2425	192.8 (T16)	BRANCH V
11	TACTICAL	VFIRE 25	154.2875	156.7 (T6)	154.2875	156.7 (T6)	BRANCH V
12							
13							
14	AIR TO GROUND	CDF T24	151.3325	192.8 (T16)	151.3325	192.8 (T16)	AIR TO GROUND
15	MEDICAL	CALCORD	156.0750	156.7 (T6)	156.0750	156.7 (T6)	EMERGENCY COORDINATION
16	EMERGENCY	GUARD25	168.6250	CSQ	168.6250	110.9 (T1)	EMERGENCY USE ONLY
17							
18							
19							
20	EMERGENCY	GUARD25	168.6250	CSQ	168.6250	110.9 (T1)	EMERGENCY USE ONLY

5. Special Instructions
TO CONFIRM THE MOST CURRENT CLONE, ENSURE YOUR CHANNEL 16 OR 20 DISPLAY MATCHES CHANNEL 16 OR 20 OF THE 205

6. Prepared by (Communications Unit Leader): Name: John Brooks (COML)
 Signature: 
ICS 205 - CONTROLLED UNCLASSIFIED INFORMATION/BASIC
 NIMS IAP Date/Time: 10/24/19 1930

TRAINEES

**Welcome to the
Kincade Incident!**

**PLEASE STOP BY THE
TRAINING SPECIALIST OFFICE TO
START THE DOCUMENTATION
PROCESS**

**Any questions please contact the
Training Specialist:
Shane Vargas (530) 410-4225**



24HR LINE RESOURCE - 2 OPERATOR

EMERGENCY SHIFT TICKET and EVALUATION FORM
The responsible Government Officer will complete this form each shift.

Contractor Name: **THE BEST DOZERS LLC**
Operator #1: **FIRST & LAST**
Operator #2: **FIRST & LAST**

Incident or Project Name: **KINGCADE**
Request Number: **E-444**
Incident Number: **CA-LNU-0193767**

Agreement Number: **MMU-0000015953**
Equipment Make: **1999 PETERBILT 379**
Equipment Model / Type: **TRANSPORT 18 WHEEL**
License Number: **12345A1**

Operator Furnished By: Contractor Government
Operating Supplies Furnished By: Contractor Government

Equipment Status: Inspected Under Agreement
Released by Government:
Withdrawn by Contractor:

Remarks/Comments: **2 OPERATORS**

Date Mo / Day	Start	Stop	Work	Hours	Days / Miles
9/5	0701	2400	17	17	DIV X
9/6	0001	0700	7	7	DIV X

Vendor Rating: **NO DAMAGE / NO CLAIM**

Govt. Rep. Name and Position - PRINT: _____

Print Your Name: _____
Govt. Rep. Signature: _____
Contractor Signature: _____
Date: 9/6/17 Time: 0700

* NOTE: any rating of POOR requires an explanation in Comment Section.
** Final evaluation or for more documentation, use a CALFIRE Form 230 or equivalent.



12HR LINE RESOURCE - 1 OPERATOR

EMERGENCY SHIFT TICKET and EVALUATION FORM
The responsible Government Officer will complete this form each shift.

Contractor Name: **THE BEST DOZERS LLC**
Operator #1: **FIRST & LAST**
Operator #2: _____

Incident or Project Name: **KINGCADE**
Request Number: **E-555**
Incident Number: **CA-LNU-0193767**

Agreement Number: **MMU-0000015955**
Equipment Make: **2004 CAT**
Equipment Model / Type: **D6N / TYPE II E**
License Number: **COMPLETE VIN#**

Operator Furnished By: Contractor Government
Operating Supplies Furnished By: Contractor Government

Equipment Status: Inspected Under Agreement
Released by Government:
Withdrawn by Contractor:

Remarks/Comments: **1 OPERATOR**

Date Mo / Day	Start	Stop	Work	Hours	Days / Miles
9/7	0001	0700	7	7	OFF SHIFT
9/7	0701	1900	12	12	DIV X
9/7	1901	2400	5	5	OFF SHIFT

Vendor Rating: **NO DAMAGE / NO CLAIM**

Govt. Rep. Name and Position - PRINT: _____

Print Your Name: _____
Govt. Rep. Signature: _____
Contractor Signature: _____
Date: 9/6/17 Time: 1900

* NOTE: any rating of POOR requires an explanation in Comment Section.
** Final evaluation or for more documentation, use a CALFIRE Form 230 or equivalent.

24HR / 12HR TRANSITION SHIFT TICKET

EMERGENCY SHIFT TICKET and EVALUATION FORM
The responsible Government Officer will complete this form each shift.

Contractor Name: **THE BEST DOZERS LLC**
Operator #1: **FIRST & LAST**
Operator #2: **FIRST & LAST**

Incident or Project Name: **KINGCADE**
Request Number: **E-444**
Incident Number: **CA-LNU-0193767**

Agreement Number: **MMU-0000015953**
Equipment Make: **1999 PETERBILT 379**
Equipment Model / Type: **TRANSPORT 18 WHEEL**
License Number: **12345A1**

Operator Furnished By: Contractor Government
Operating Supplies Furnished By: Contractor Government

Equipment Status: Inspected Under Agreement
Released by Government:
Withdrawn by Contractor:

Remarks/Comments: **2 OPERATORS**

Date Mo / Day	Start	Stop	Work	Hours	Days / Miles
9/6	0701	1900	12	12	DIV X
9/6	1901	2400	5	5	OFF SHIFT

Vendor Rating: **NO DAMAGE / NO CLAIM**

Govt. Rep. Name and Position - PRINT: _____

Print Your Name: _____
Govt. Rep. Signature: _____
Contractor Signature: _____
Date: 9/6/17 Time: 1900

* NOTE: any rating of POOR requires an explanation in Comment Section.
** Final evaluation or for more documentation, use a CALFIRE Form 230 or equivalent.

24HR IN CAMP RESOURCE

EMERGENCY SHIFT TICKET and EVALUATION FORM
The responsible Government Officer will complete this form each shift.

Contractor Name: **THE BEST CAMP LLC**
Operator #1: **FIRST & LAST**
Operator #2: _____

Incident or Project Name: **KINGCADE**
Request Number: **E-333**
Incident Number: **CA-LNU-0193767**

Agreement Number: **MMU-0000015950**
Equipment Make: **TENT**
Equipment Model / Type: **WESTERN SHELTER 19X35**
License Number: _____

Operator Furnished By: Contractor Government
Operating Supplies Furnished By: Contractor Government

Equipment Status: Inspected Under Agreement
Released by Government:
Withdrawn by Contractor:

Remarks/Comments: **(4) TENTS, CANOPY WRISDES FLOOR & INSULATED ROOF 870sq ft NO DAMAGE / NO CLAIM**

Date Mo / Day	Start	Stop	Work	Hours	Days / Miles
9/2	0001	2400	24	24	ICP

Vendor Rating: _____

Govt. Rep. Name and Position - PRINT: _____

Print Your Name: _____
Govt. Rep. Signature: _____
Contractor Signature: _____
Date: 9/6/17 Time: 1900

* NOTE: any rating of POOR requires an explanation in Comment Section.
** Final evaluation or for more documentation, use a CALFIRE Form 230 or equivalent.



PUBLIC INFORMATION



Official Sources of Public Information

Incident Information Line: (707) 967-4207

Incident Media Line: (707) 583-1479

Incident Website: www.fire.ca.gov

Media Law

The California State Penal Code Section 409.5(d) allows the news media to enter scenes of disaster, riot, or civil disturbance. Properly identified members of the news media should not be restricted from entering locations specified within the code. However, this does not include crime scenes, and does not imply that the news media may interfere with incident operations while they are in the areas of concern. If entering such a location that is hazardous, they should be advised; media access cannot be prevented for safety reasons unless their presence would impede CAL FIRE's mitigation of the incident or the disturbing of evidence. When working around the media, remember:

- **Media is not permitted** on private property without the property owners permission.
- If approached and questioned by the media and or the public, talk about your assignment or task at hand. Remember to wear all the appropriate PPE.
- If needed call for an incident PIO through the chain of command.
- **Never speculate, give opinions or speak for others.**
- There is no such thing as an "off the record" comment.

CAL FIRE Social Media Policy (Social Media 0691)

Social Media is increasingly being used by public agencies, the media as well as the public. This form of communication continues to grow rapidly in order to supply the instant gratification needs of society. Therefore when on a CAL FIRE incident you will adhere to the CAL FIRE Social Media Policy, 0691. You can get further information about the CAL FIRE Social Media Policy from the incident Public Information Officer. While assigned to the incident, there will be no posting of:

- Inappropriate information or materials
- No opinions
- No endorsements
- Inappropriate pictures or videos

Lost and Found

The Information Section will manage Lost and Found items for the incident. If you have lost an item leave your contact information and what you have lost at the Information Section. If you have found an item on the incident bring the item to the Information Section with your contact information as well.

Incident Base Camp Mailing Address

**c/o Public Information Office
1350 Bennett Valley Rd.
Jockey Club Entrance
Santa Rosa, CA 95404**

Archaeological and Historic Properties: General Fire-line Guidance.

**Do not compromise safety for the protection and preservation of archaeological and historic properties.
When possible and prudent:**

1. Be on the lookout for prehistoric and historic archaeological sites. These sites typically occur adjacent to streams and springs, confluences are often especially sensitive. However, sites can occur in other areas too. The most common indicators of prehistoric sites in this area (North Coast Ranges) are scatters of shiny black obsidian flakes from tool making activities and dark midden soils. Historic-era sites include homesteads that contain foundations, rock chimneys, and stone / brick-lined wells. Historic-era mining sites are possible as well.
2. Note, that not much of the area has ever been surveyed for archaeological resources and many sites out there have yet to be discovered.
3. If you observe archaeological resources, flagged or unflagged, attempt to avoid with ground disturbing activities altogether.
4. If avoidance is not possible, minimize ground disturbance. Use a hand crew rather than a dozer to remove fuels from control lines that must cross site areas if possible.
5. Leave all artifacts in place as some may have been intentionally placed for religious or ceremonial reasons.
6. Note locations of discovered resources on a map, better yet, take site coordinates with a GPS. Leave information for the archaeologist so that the sites can be relocated and protected during Fire Suppression Repair. Flag the site in red if possible.
7. If you encounter a burial or other human remains, cease work in that area and contact the archaeologist immediately.

Your help preserving California's non-renewable cultural resources is appreciated.

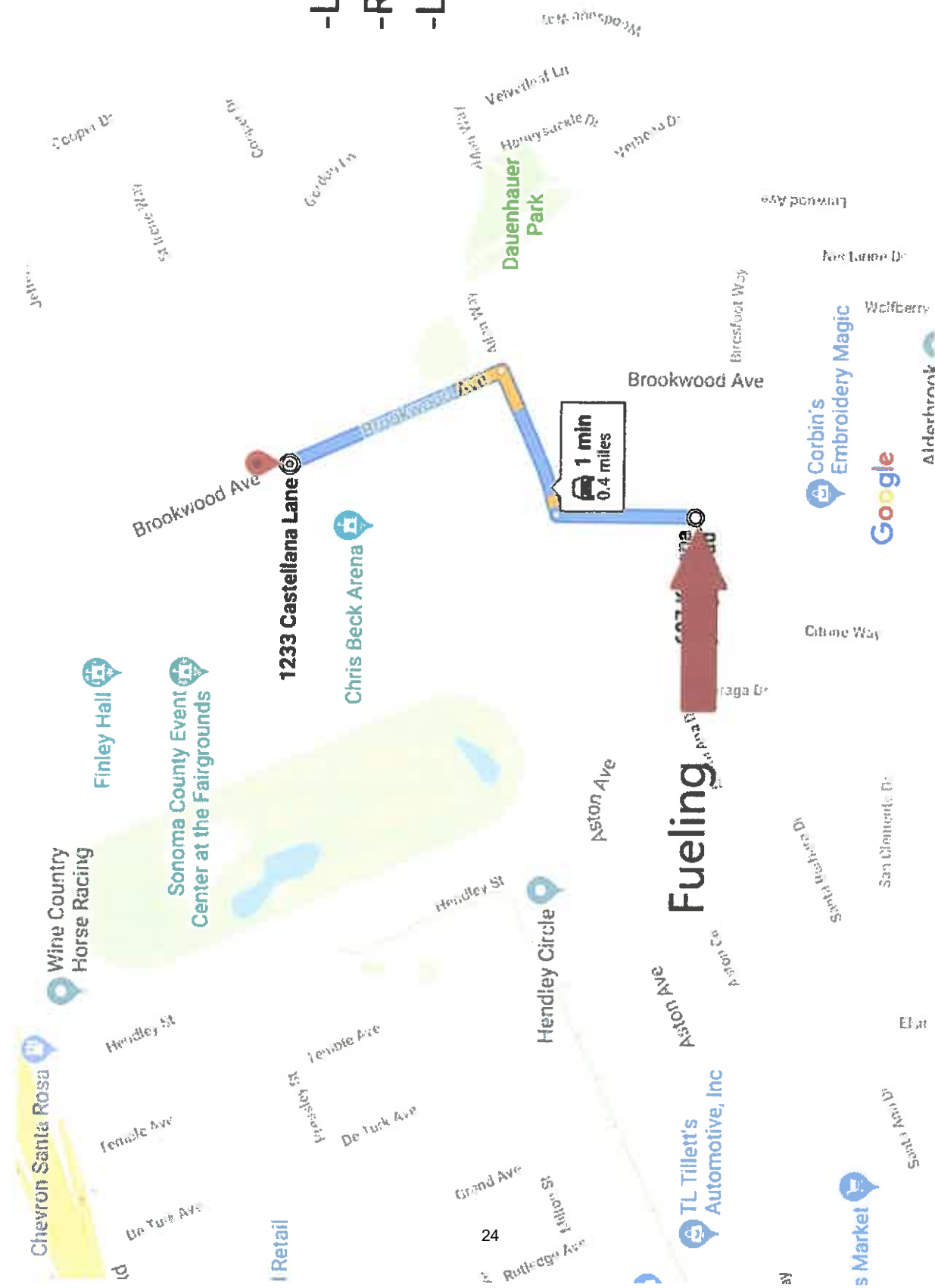
Contact Information:

Christopher Lloyd
Ukiah Field Office Archaeologist
Bureau of Land Management
(707) 468-4075
crilloyd@blm.gov

Ben Harris
Associate State Archaeologist for CAL-Fire's Northern Region
Coverage area: MEU, LNU, CZU, and SCU
Northern Region Headquarter
135 Ridgway Avenue
Santa Rosa, CA 95401
Office: (707) 576-2966
Mobile: (707) 529-7989
Ben.harris@fire.ca.gov

Calvary Catholic Cemetery

- Left out of Exit
- Right on Allen
- Left on Meda Rd



Fueling

TL Tillett's Automotive, Inc

s Market

Corbin's Embroidery Magic

Google

Airbnb

San Clemente Dr

Elm

Scott Hill Dr

Springfield Dr

Clime Way

Traga Dr

Aston Ave

ASTON AVE

Aston Ave

Hendley Circle

Hendley St

Fertale Ave

De Turk Ave

Hendley St

Fertale Ave

De Turk Ave

Chevron Santa Rosa

Wine Country Horse Racing

Finley Hall

Sonoma County Event Center at the Fairgrounds

1233 Castellana Lane

Chris Beck Arena

Dauenhauer Park

Brookwood Ave

Biresfoot Way

Red Lane Dr

Wolfberry

Livwood Ave

Yermo Dr

Herrysuckle Dr

Velviede Ln

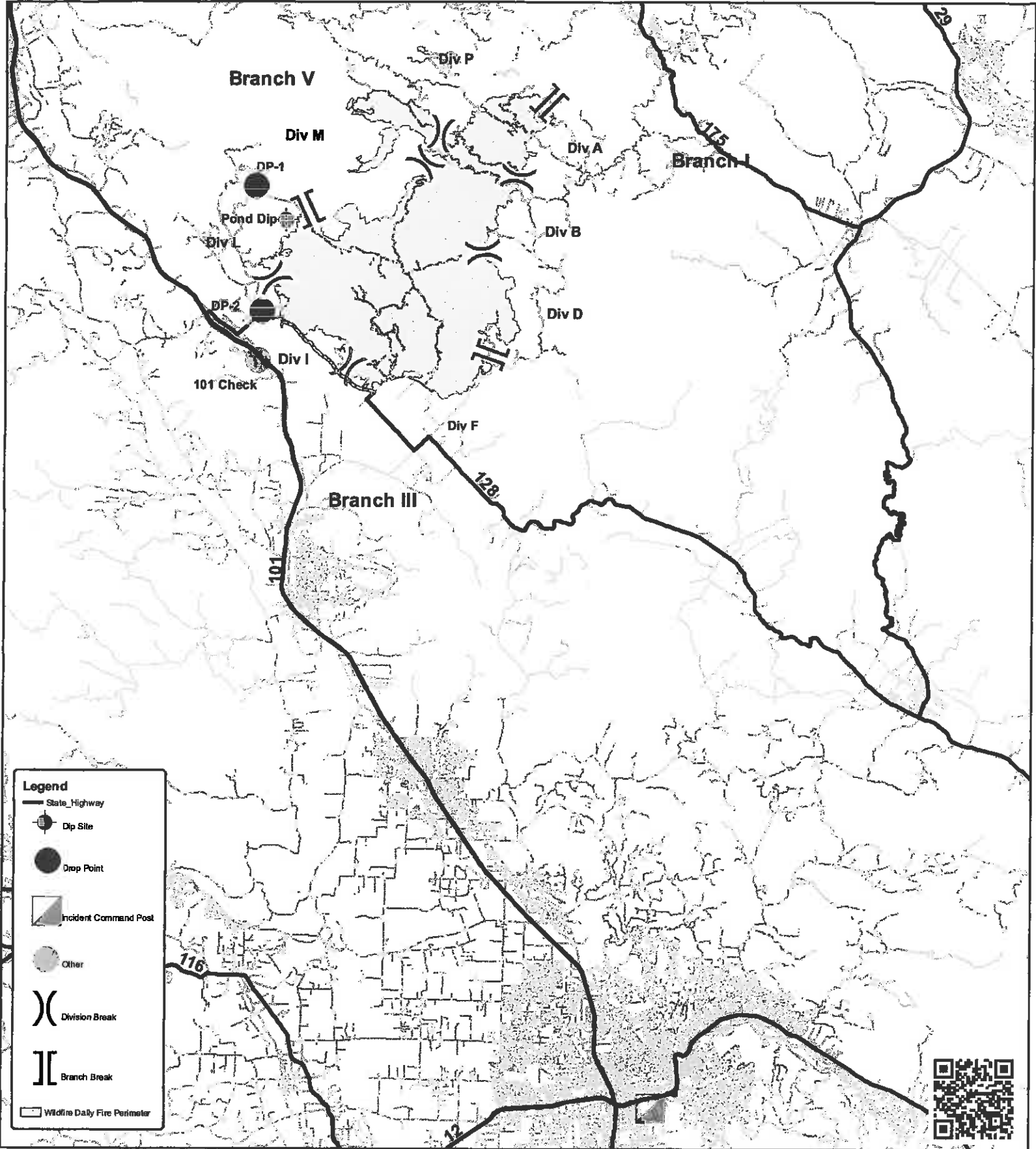
1233 Meda Rd

Gardner Ln

Conover Dr

St Anne Rd

Cooper Dr



Transportation Map
 Kincadee Incident
 CA-LNU-019376
 October 25, 2019
 0700 - 0700
 1:200,000
 NAD83



UNIT LOG (ICS 214)

1. Incident Name: **KINCADE** 2. Operational Period: Date From: 10/25/19 Date To: 10/26/19
 Time From: 0700 Time To: 0700

3. Unit Name/Designators 4. Unit Leader (Name and ICS Position)

5. Personnel Assigned/Designators		
NAME	ICS POSITION	HOME BASE

6. Activity Log (Continue on Reverse)

TIME	MAJOR EVENTS

7. Prepared By: _____ Date/Time: _____