

# INCIDENT ACTION PLAN KINCADE INCIDENT

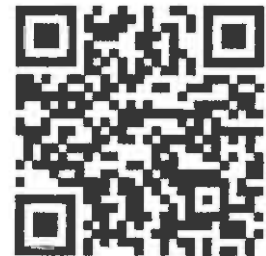
CA-LNU-019376

Monday



## OPERATIONAL PERIOD

10/28/2019 0700  
to  
10/29/2019 0700





# INCIDENT OBJECTIVES (ICS 202)

<b>1. Incident Name:</b> <p style="text-align: center;"><b>KINCADE</b></p>	<b>2. Operational Period:</b> Date From: 10/28/2019    Date To: 10/29/2019 Time From: 0700            Time To: 0700
---	---

**3. Objective(s):**

**Management Objectives**

- Provide for emergency personnel and public safety at all times.
- Protect property, improvements, and infrastructure.
- Ensure repopulation takes place in a quick, efficient and effective manner.
- Ensure coordinated, timely and accurate release of public information.
- Foster and maintain relationships with all cooperators and stakeholders.
- Protect economic, natural, cultural and heritage resources.
- Maintain fiscal accountability and keep costs commensurate with values at risk.

**Control Objectives**

- Keep the fire West of Hwy 175
- Keep the fire South of 7 Mile Control
- Keep the fire East of Cazadero Hwy
- Keep the fire North of Hwy 116

**General Situational Awareness:**

Steep and rugged terrain, critically dry and receptive fuel beds, active area for fire history under Red Flag conditions during the first part of the shift. There is a predicted change of weather and wind conditions during the shift. Reviw the weather forecast for more information.

**5. Site Safety Plan Required?**                      Yes  No

**Approved Site Safety Plan(s) Located at:**

**6. Incident Action Plan**

<input checked="" type="checkbox"/> ICS 203	<input checked="" type="checkbox"/> ICS 215A	<input type="checkbox"/> Phone List	<input type="checkbox"/> Fire Suppression Repair Plan
<input checked="" type="checkbox"/> ICS 204	<input checked="" type="checkbox"/> ICS 220	<input checked="" type="checkbox"/> Training Message	<input type="checkbox"/>
<input checked="" type="checkbox"/> ICS 205	<input checked="" type="checkbox"/> Incident Map	<input checked="" type="checkbox"/> Travel Map	<input type="checkbox"/>
<input checked="" type="checkbox"/> ICS 206	<input checked="" type="checkbox"/> Weather Forecast	<input checked="" type="checkbox"/> Demob Plan	<input type="checkbox"/>
<input checked="" type="checkbox"/> ICS 208	<input checked="" type="checkbox"/> Fire Behavior	<input checked="" type="checkbox"/> Finance Message	<input checked="" type="checkbox"/> ICS 214

<b>7. Prepared By:</b> Gabe Garcia	Position/Title: PSC	Signature:
<b>8. Approved by Incident Commander:</b>	Jeff Veik	Signature:

ICS 202 NIMS IAP

## ORGANIZATION ASSIGNMENT LIST (ICS 203)

<b>1. Incident Name:</b> KINCADE		<b>2. Operational Period: Date From:</b> 10/28/2019 Time From: 0700		<b>Date To:</b> 10/29/2019 Time To: 0700	
<b>3. Incident Commander(s) and Command Staff:</b>			<b>7. Operation Section:</b>		
IC/UC's J. Veik / S. Murphy / M. Heine /		Operations	J. Ohs		
J. Boaz / D. Franchesci / S. Andreis /		Deputy Operations	T. Ernst / R. Roberts		
T. Gossner / S. Murphy		Night Ops	B. Farrell / T. Lubas		
Deputy R. Myers / M. Blankenheim / J. Janssen		Staging Area			
Safety Officer J. Buchmeier		Branch	I	B. Lopez / S. Jerry (T)	
Information Officer J. Cox		Division/Group	A	S. Pindell / P. Schoendienst (T)	
Liaison Officer G. Pemberton		Division/Group	B	S. Rohrs / C. Logan (T)	
<b>4. Agency/Organization Representatives:</b>		Division/Group	D	T. Pederson / J. Stocks (T)	
Agency/Organization	Name	Division/Group	Calistoga Cont		
BIA	G. Perry	Branch	III	Mclaughlin / Gahagan / Lane (T)	
BLM	J. Tunnell / Ryan Aeby	Division/Group	F	J. Read	
CCC	A. Bayhon	Division/Group	E	B. Giambrone / J. Sorenson (T)	
CDCR	J. Auzenne	Branch	V	D. Esades	
Calpine	D. Franklin	Division/Group	H/L	M. Batham / E. Sell (T)	
Lake County Sheriff	B. Martin	Division/Group	M	S. Grandahl / M. Orme (T)	
OES F&R	D. Franklin	Division/Group	P	M. Houston / S. Heath (T)	
PG&E	D. Hotchkiss	Division/Group			
Sonoma County EOC	C. Godley	Branch	Dry Creek	S. Andreis	
USFS	S. Burns	Division/Group	G	P. Lohan	
		Division/Group	I	N. Gorham	
		Division/Group			
		Branch	Occidental		
		Division/Group			
		Branch	Santa Rosa	S. Ward	
<b>5. Planning Section:</b>		Division/Group	C. Matthews		
Chief	G. Garcia / A. Mitchell	Division/Group			
Deputy	S. DeBenedet	Branch	Sebastopol		
Resource Unit	J. Anderson / M. Selzer	Division/Group			
Situation Unit	T. Gikas / C. Ingram	Division/Group			
Documentation Unit	B. Strohmayer	Branch	River	W. Weiser	
Demobilization Unit	T. Shevenell	Division/Group			
GISS	T. Knecht	Branch			
FBAN	S. Volmer	Division/Group	Dozer Group	M. Turbeville / J. Pierce	
IMET	R. Walbrun	Staging Area	STAGING		
Training Tech Spec	S. Vargas	Air Operations Branch		Director: T. Swanson	
		Air Support Group Supervisor		B. Kremensky	
		Air Tactical Group Supervisor			
<b>6. Logistics Section</b>		Helibase Manager			
Chief	S. Dohman				
Supply Unit	P. Lee	<b>8. Finance/Administration Section:</b>			
Facilities Unit	B. Luiz	Chief	S. Hogan		
Ground Support Unit	J. Luckenbach	Time Unit	S. Beck		
Communications Unit	J. Brooks	Procurement Unit	J. Andrade		
Medical Unit	E. Castellanos	Comp/Claims Unit	K. Lamb		
		Cost Unit	J. Tapia		
<b>Prepared By: Name:</b> S. DeBenedet		<b>Position/Title:</b> PSC	<b>Signature:</b> 		
<b>ICS 203</b>		<b>Date/Time:</b> 10/27/2019 2300 hours			



# Kincade Fire Weather Forecast



**FORECAST NO:** 3

**NAME OF FIRE:** Kincade

**PREDICTION FOR:** Monday Day and Night

**UNIT:** CA-LNU-19376

**SHIFT DATE:** 10/28 0700-10/29 0700

**SIGNED:** Ryan Walbrun

**TIME AND DATE**

**Incident Meteorologist**

**FORECAST ISSUED:** 2100 on 10/27/19

**...Red Flag Warning for switching winds and low humidity through 11 am Monday...**

**WEATHER DISCUSSION:** Northeast winds early this morning will be turning to a more southwest direction by midday or early afternoon. This will be favorable for the Branches along Highway 101 but will be adverse to the line for interior divisions along the Lake and Napa County lines. Humidity values will remain very low with values in the teens that may actually creep higher by late in the day. Cool morning temperatures will rebound back into the mid 60s and 70s by afternoon. For tonight winds will show a slight shift to a northwest direction, especially for the upper and interior portions of the fire. Expect cooler temperatures and better humidity recovery for elevations below 1000 feet near Highway 101 and 128.

**WEATHER FORECAST MONDAY:**

**WEATHER:** Smoke. Otherwise mostly sunny.

**TEMPERATURES:** Highs mid 60s above 2000 feet and mid 70s below.

**HUMIDITY:** Humidity 15% rising to 25% by late afternoon.

**20 FT WINDS:**

**RIDGETOP** - Northeast 5-10 mph through 1100 then turning Southwest 5-10 mph.

**SLOPE/VALLEY** – Light then southerly upslope 3-7 mph a few late day gusts 10-12 mph

**STABILITY/INVERSION:** Moderate to strong inversion with light winds and heavy smoke may limit AirOps

**WEATHER FORECAST MONDAY NIGHT:**

**WEATHER:** Much cooler with clear skies. Otherwise areas of smoke.

**TEMPERATURES:** Overnight lows upper 30s Highway 101 corridor to upper 40s thermal belts @1500 feet.

**HUMIDITY:** Overnight recovery 28-35% by morning on the ridges with 60% Highway 101 and lower slopes.


**20 FT WINDS:**

**RIDGETOP** - Northwest 4-8 mph

**SLOPE/VALLEY** - Light downcanyon 2-5 mph

**Extended Forecast:** Another dry North/Northeast wind event arrives Tuesday. The magnitude looks similar to when the Kincade Fire started. Early estimates suggest Northeast winds 15-30 mph with gusts 40-50 mph above 2000 feet through Wednesday morning. Humidity values will plummet once again to 9-19%. Finally a quiet pattern returns later Wednesday into the weekend with light diurnal winds. Seasonable temperatures but no precipitation.

# FIRE BEHAVIOR FORECAST

<b>FORECAST NUMBER:</b> 4	<b>TYPE OF FIRE:</b> Wildland
<b>FIRE NAME:</b> Kincade	<b>OPERATIONAL PERIOD:</b> 10/28-10/29, 0700-0700
<b>DATE ISSUED:</b> 10/27/2019	<b>TIME ISSUED:</b> 2000
<b>UNIT:</b> CA-LNU-019376	<b>SIGNED:</b> 
<b>Typed/printed:</b> Stephen Volmer FBAN	

## INPUTS

**WEATHER SUMMARY:** RED FLAG WARNING FOR STRONG NE WINDS, TILL 11:00

Temp (day): 60-70 max                      Temp (night): 30-35 min  
 RH (day): 15-25% min                      RH (night): 28-35% max upper evl, 60% along Hwy 101  
 Wind (day): NE 5-10mph then SW 5-10mph after 11am                      Wind (Night): NW 4-8mph

**Low humidity will continue throughout the shift in the upper elevations.**

## OUTPUTS

### FIRE BEHAVIOR

#### GENERAL:

Expect the erratic fire behavior to diminish after 11am when the wind shift occurs. This will produce lower rates of spread and intensities throughout the fire area. Be alert to the changing conditions and changes in the winds. The fuels will still remain very receptive to new ignitions in the fire area and surrounding communities.

In the absence of weather conditions outside the forecast or extreme fire behavior conditions expect:

	Max. Flame Length	Max. Rate of Spread	Spotting	Probability of Ignition
Grass	5 feet	37-45 ft/min	2miles	73%
Grass/Shrub Mix	10 feet	60-100 ft/min	2 miles	73%
Shrub	14 feet	60-70 ft/min	2 miles	73%
Timber Understory	8 feet	9-12 ft/min	4 miles	73%

**\*\*minimum safety zone size for grass and brush fuels is 2/3 acre (0.25 Ha) for a Strike Team of Engines.**

**\*\*minimum safety zone size for timber fuels is 1 acre (0.4 Ha) for a Strike Team of Engines.**

**\*\*minimum safety zone size for WUI/shrub fuels is 3 acres (1.2 Ha) for a Strike Team of Engines.**

#### SPECIFIC:

**Grass Fuels:** Good overnight humidity recover in the lower elevations. Fuels will still be very receptive for ignitions.

**Shrub Fuels:** The decrease in winds will also decrease the spotting potential from large brush fields.

**Timber Fuels:** Single and group tree torching will still occur in heavier fuels of DIV A, B, D, F, and P. Flame lengths may reach >25', and still produce good ember cast down wind.

#### AIR OPERATIONS:

Expect gusty winds over ridge tops. Visibility will change as the winds shift from NE to SW after 11am

Mixing height: 4,000 ft. AGL, Transport winds will shift after 11am.                      Sunrise 0735, Sunset 1816.

## SAFETY

**Escape routes:** Be prepared to have multiple locations identified due to the shift in winds.

Fire weakened timber will continue to release in all areas of the incident. Your escape routes and travel paths may be blocked at any time.

Be prepared for the **known wind shift** that will occur after 11am.



# SAFETY MESSAGE

## Kincade Incident



1. Incident Name: Kincade	2. Operational Period: Date From: 10/28/19 Time From: 07:00	Date To: 10/29/19 Time To: 07:00
---------------------------	--	-------------------------------------

3. Safety Message/Expanded Safety Message, Safety Plan, Site Safety Plan:

**The Kincade Incident is still under Red Flag warnings. Take appropriate actions to prepare your crews and equipment the anticipated wind.**

- Stay aware of what is happening around you and adapt your exit strategy accordingly.
- Strong & erratic winds are predicted throughout the operational period. Any new ignition will grow rapidly and will be difficult to control.
- ESTABLISH: LOOKOUTS, COMMUNICATIONS, ESCAPE ROUTES AND SAFETY ZONES.
- Ensure radios are properly programmed for today's IAP and all crewmembers are familiar with incident communication plan.
- Beware of environmental hazards such as beehives, poison oak, trip hazards, steep slopes, hazard trees and stump holes. Look Up, Down, and Around.
- Understand that residents, workers and the media may still be present on the incident.
- Monitor yourself and crew for fatigue. Set a reasonable pace for your assignment.
- Watch for congested roadways and heavy traffic in and around the incident. Maintain a safe following distance.
- Resources working within the Geysers site brief your crew on the included Safety Message with specific items for the site.

**Avoid complacency by staying engaged and focused on the tasks assigned**

4. Site Safety Plan Required? Yes  No

5. Prepared by: Name: Buchmeier SOF1 / Segura SOF1(T)		
ICS 208	Date/Time October 27, 2019 / 1900	



# GEYSERS

## SAFETY MESSAGE

**This Safety Message applies to any resource assigned to the Geysers, in addition to the Kincade Incident Safety Message.**

- ⇒ The Geysers is a power distribution area, assume all power lines are energized. DO NOT CUT ANY DOWN POWERLINES.
- ⇒ Steep winding UNMARKED roads are throughout the Geysers. Drive defensively with headlights on anticipating the unexpected.
- ⇒ The Geysers area contain vertical and horizontal mines shafts, look down for vertical mines and stay away from horizontal mine openings.
- ⇒ Earthquakes are prevalent throughout the Geysers, LOOK OUT for rolling rocks and take earthquake precautions if earthquakes are felt.
- ⇒ Hydrogen Sulfide (H<sub>2</sub>S) in parts per million can be hazardous, if available utilize air monitoring equipment to detect for this hazard.
- ⇒ Natural steam vents exist in many areas. DO NOT mistake steam for smoke you may be BURNED.
- ⇒ Reclaimed hydrants are painted PURPLE do not drink water from the hydrant system in the Geysers.
- ⇒ Stay upwind of cooling towers, the steam may contain hazardous materials. Use DEFENSIVE tactics on cooling tower fires.

Joe Buchmeier SOF1 IMT 6

A handwritten signature in black ink, appearing to read "Joe Buchmeier".

Lookouts

Communications

Escape Routes

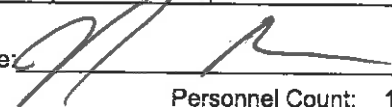
Safety Zones





# ASSIGNMENT LIST (ICS 204 WF)

CONTROLLED UNCLASSIFIED  
INFORMATION/BASIC

<b>1. Incident Name:</b> <b>KINCADE</b>		<b>2. Operational Period:</b> Date From: 10/28/19    Date To: 10/29/19 Time From: 0700    Time To: 0700				<b>3. Branch</b> <b>I</b>		<b>Division</b> <b>A</b>	
<b>4. Operations Personnel:</b>						Page 1 of 1		Alpha	
Operations Section Chief: <b>J. Ohs</b>				Night Ops: <b>B. Farrell / T. Lubas</b>					
Branch Director: <b>B. Lopez / S. Jerry (T)</b>				Branch Safety:					
Division/Group Supervisor: <b>S. Pindell / P. Schoendienst (T)</b>				Air Attack:					
<b>5. Resources Assigned:</b>		<b>** Resources Below in Bold are 12 Hour **</b>							
Resource Identifier	ALS	LWD	Leader	Personnel	Request #	Hours	Reporting Location		
T/F XMN 6175			R. Nalder	17	E-228	0700-0700	ICP		
<b>CRW T2 C-46</b>			<b>D. Owen</b>	20	<b>C-46</b>	<b>0700-1900</b>	<b>ICP</b>		
<b>CRW T2 C-47</b>			<b>J. Alvarez</b>	20	<b>C-47</b>	<b>0700-1900</b>	<b>ICP</b>		
<b>CRW T2 C-49</b>			<b>J. Graham</b>	20	<b>C-49</b>	<b>0700-1900</b>	<b>ICP</b>		
<b>CRWT2 C-51</b>			<b>D. Duffy</b>	20	<b>C-51</b>	<b>0700-1900</b>	<b>ICP</b>		
<b>CRWT2 C-53</b>			<b>R. Nettleship</b>	20	<b>C-53</b>	<b>0700-1900</b>	<b>ICP</b>		
DOZ PVT E-287			W. Johnson	2	E-287	0700-0700	ICP		
DOZ PVT E-288			A. Fukuda	2	E-288	0700-0700	ICP		
DOZ PVT E-289			A. Biggs	2	E-289	0700-0700	ICP		
DOZ PVT E-290			R. Wilber	2	E-290	0700-0700	ICP		
DOZ PVT E-291			J. Key	2	E-291	0700-0700	ICP		
DOZ PVT E-298			J. Major	2	E-298	0700-0700	ICP		
HEQB BIBBY			J. Bibby	1	O-617	0700-0700	ICP		
HEQB JONES (T)			J. Jones	1	O-355	0700-0700	ICP		
<b>FALM O-637</b>			<b>A. Peterson</b>	2	<b>O-637</b>	<b>0700-1900</b>	<b>ICP</b>		
<b>EMPF DRAKE</b>			<b>S. Drake</b>	1	<b>O-541</b>	<b>0700-1900</b>	<b>ICP</b>		
<b>EMPF OSBOURNE</b>			<b>T. Osbourne</b>	1	<b>O-542</b>	<b>0700-1900</b>	<b>ICP</b>		
<b>6. Work Assignments:</b>									
Construct and hold line utilizing direct tactics and cold trail fingers & islands where necessary to prevent fire spread. Improve direct fire line. Mop up 300' in from control line.									
<b>7. Special Instructions:</b>									
All NIFC Command channels are linked to operate as one. The command channel noted in the 204 is a recommendation and users may need to utilize one of the other NIFC Commands based off of geographical location.									
<b>8. Communications</b>									
Name	Ch	Function	Rx Freq	Rx Tone	Tx Freq	Tx Tone	Notes		
NIFC C10	4	COMMAND	170.4125		165.9625	131.8 (T3)	MT. ST. HELENA LINKED W/ C3 & C8		
CDF T30	10	TACTICAL	151.3925	192.8 (T16)	151.3925	192.8 (T16)	BRANCH I		
CDF T24	14	AIR TO GROUND	151.3325	192.8 (T16)	151.3325	192.8 (T16)	AIR TO GROUND		
CALCORD	15	MEDICAL	156.0750	156.7 (T6)	156.0750	156.7 (T6)	EMERGENCY COORDINATIO		
GUARD28	16	EMERGENCY	168.6250	CSQ	168.6250	110.9 (T4)	EMERGENCY USE ONLY		
<b>9. Prepared by: Name:</b> J. Anderson / M. Selzer    RESL									
						Signature: 			
<b>ICS 204</b>		Date/Time: 10/27/2019 2200				Personnel Count: 135			

# ASSIGNMENT LIST (ICS 204 WF)

CONTROLLED UNCLASSIFIED  
INFORMATION/BASIC

<b>1. Incident Name:</b> <b style="text-align: center;">KINCADE</b>	<b>2. Operational Period:</b> Date From: 10/28/19    Date To: 10/29/19 Time From: 0700    Time To: 0700	<b>3. Branch</b> <b>Division</b>  <b style="text-align: center;">I</b> <b style="text-align: center;">B</b>  Page 1 of 2 <b style="text-align: center;">Bravo</b>
--	---	---

<b>4. Operations Personnel:</b> Operations Section Chief: <b>J. Ohs</b>		Night Ops: <b>B. Farrell / T. Lubas</b>
Branch Director: <b>B. Lopez / S. Jerry (T)</b>		Branch Safety:
Division/Group Supervisor: <b>S. Rohrs / C. Logan (T)</b>		Air Attack:

5. Resources Assigned:	** Resources Below In Bold are 12 Hour **							
Resource Identifier	ALS	LWD	Leader	Personnel	Request #	Hours	Reporting Location	
STC SHU 9241C			D. Watt	17	E-59	0700-0700	ICP	
STC XMR 2140C				18	E-63	0700-0700	ICP	
STG LNU 9140G			J. Galvin	33	C-76	0700-0700	ICP	
STG TGU 9252G			M. Brown	33	C-11	0700-0700	ICP	
<b>CRWT2 C-26</b>			<b>T. Burrieta</b>	20	<b>C-26</b>	<b>0700-1900</b>	<b>ICP</b>	
<b>CRWT2 C-27</b>			<b>C. Juarez</b>	20	<b>C-27</b>	<b>0700-1900</b>	<b>ICP</b>	
<b>CRWT2 C-32</b>			<b>C. Watkins</b>	20	<b>C-32</b>	<b>0700-1900</b>	<b>ICP</b>	
<b>CRWT2 C-37</b>			<b>A. Bird</b>	20	<b>C-37</b>	<b>0700-1900</b>	<b>ICP</b>	
STL LMU 9222L			G. Lane	5	E-23	0700-0700	ICP	
STL MEU 9118L			K. Taglio	5	E-22	0700-0700	ICP	
DOZ LNU 1443			G. Reynolds	0	E-6	0700-0700	ICP	
DOZ PVT E-18			W. Dunlap	2	E-18	0700-0700	ICP	
DOZ PVT E-27			D. Boggs	2	E-27	0700-0700	ICP	
DOZ PVT E-29			P. Lowrey	2	E-29	0700-0700	ICP	
DOZ PVT E-194			E. Dills	2	E-194	0700-0700	ICP	
DOZ PVT E-195			M. Morrison	2	E-195	0700-0700	ICP	
DOZ PVT E-485			G. Yates	2	E-485	0700-0700	ICP	
HEQB NELSON			C. Nelson	1	O-8	0700-0700	ICP	

**6. Work Assignments:**  
Construct and hold line utilizing direct tactics and cold trail fingers & islands where necessary to prevent fire spread.  
Improve direct fire line. Mop up 300' in from control line.

**7. Special Instructions:**  
All NIFC Command channels are linked to operate as one. The command channel noted in the 204 is a recommendation and users may need to utilize one of the other NIFC Commands based off of geographical location.

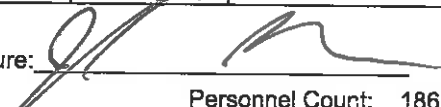
8. Communications							
Name	Ch	Function	Rx Freq	Rx Tone	Tx Freq	Tx Tone	Notes
NIFC C10	4	COMMAND	170.4125		165.9625	131.8 (T3)	MT. ST. HELENA LINKED W/ C3 & C8
CDF T31	11	TACTICAL	159.3825	192.8 (T16)	159.3825	192.8 (T16)	BRANCH I
CDF T24	14	AIR TO GROUND	151.3325	192.8 (T16)	151.3325	192.8 (T16)	AIR TO GROUND
CALCORD	15	MEDICAL	156.0750	156.7 (T6)	156.0750	156.7 (T6)	EMERGENCY COORDINATI
GUARD28	16	EMERGENCY	168.6250	CSQ	168.6250	110.9 (T1)	EMERGENCY USE ONLY

<b>9. Prepared by: Name:</b>	J. Anderson / M. Seizer	RESL	Signature:
<b>ICS 204</b>	Date/Time: 10/27/2019 2200	Personnel Count: 204	



# ASSIGNMENT LIST (ICS 204 WF)

CONTROLLED UNCLASSIFIED  
INFORMATION/BASIC

<b>1. Incident Name:</b> <b>KINCADE</b>		<b>2. Operational Period:</b> Date From: 10/28/19    Date To: 10/29/19 Time From: 0700    Time To: 0700				<b>3. Branch</b> <b>I</b>		<b>Division</b> <b>D</b>	
<b>4. Operations Personnel:</b> Operations Section Chief: <b>J. Ohs</b> Branch Director: <b>B. Lopez / S. Jerry (T)</b> Division/Group Supervisor: <b>T. Pederson / J. Stocks (T)</b>						Night Ops: <b>B. Farrell / T. Lubas</b>		Page 1 of 1 <b>Delta</b>	
<b>5. Resources Assigned:</b>		<b>** Resources Below in Bold are 12 Hour **</b>							
Resource Identifier	ALS	LWD	Leader	Personnel	Request #	Hours	Reporting Location		
STC XSA 4152C	X		J. Edmiston	21	E-231	0700-0700	ICP		
STC XNE 4104C			J. Bierwagen	18	E-233	0700-0700	ICP		
STC XTB 4229C			S. Pevenage	22	E-234	0700-0700	ICP		
STC XHU 2075C			R. Wakefield	17	E-224	0700-0700	ICP		
T/F XTE 3800						0700-0700	ICP		
T/F XSN 2387			J. Thomas	29	E-104	0700-0700	ICP		
<b>CRWT2 C-29</b>			<b>F. Hernandez Perez</b>	20	<b>C-29</b>	<b>0700-1900</b>	<b>ICP</b>		
<b>CRWT2 C-30</b>			<b>J. Deifin</b>	20	<b>C-30</b>	<b>0700-1900</b>	<b>ICP</b>		
<b>CRWT2 C-39</b>			<b>L. Vera</b>	20	<b>C-39</b>	<b>0700-1900</b>	<b>ICP</b>		
STL NEU 9237L						0700-0700	ICP		
STL TGU 9250L			G. Trull	5	E-21	0700-0700	ICP		
DOZ MRN 1540			J. Demoss	4	E-255	0700-0700	ICP		
DOZ TGU 2544			M. Glenn	2	E-8	0700-0700	ICP		
DOZ PVT E-19			J. Ponte	2	E-19	0700-0700	ICP		
DOZ PVT E-20			J. Slaight	0	E-20	0700-0700	ICP		
DOZ PVT E-30			J. Dillsaver	2	E-30	0700-0700	ICP		
DOZ PVT E-189			R. Holtz	2	E-189	0700-0700	ICP		
DOZ PVT E-191			J. Coleman	2	E-191	0700-0700	ICP		
<b>6. Work Assignments:</b> Construct and hold line utilizing direct tactics and cold trail fingers & islands where necessary to prevent fire spread. Improve direct fire line. Mop up 300' in from control line.									
<b>7. Special Instructions:</b> All NIFC Command channels are linked to operate as one. The command channel noted in the 204 is a recommendation and users may need to utilize one of the other NIFC Commands based off of geographical location.									
<b>8. Communications</b>									
Name	Ch	Function	Rx Freq	Rx Tone	Tx Freq	Tx Tone	Notes		
NIFC C10	4	COMMAND	170.4125		165.9625	131.8 (T3)	MT. ST. HELENA LINKED W/ C3 & C8		
CDF T32	12	TACTICAL	151.2425	192.8 (T16)	151.2425	192.8 (T16)	BRANCH I		
CDF T24	14	AIR TO GROUND	151.3325	192.8 (T16)	151.3325	192.8 (T16)	AIR TO GROUND		
CALCORD	15	MEDICAL	156.0750	156.7 (T6)	156.0750	156.7 (T6)	EMERGENCY COORDINATION		
GUARD28	16	EMERGENCY	168.6250	CSQ	168.6250	110.9 (T1)	EMERGENCY USE ONLY		
<b>9. Prepared by: Name:</b> J. Anderson / M. Selzer    RESL									
					Signature: 				
<b>ICS 204</b>		Date/Time: 10/27/2019 2200				Personnel Count: 186			











# ASSIGNMENT LIST (ICS 204 WF)

CONTROLLED UNCLASSIFIED  
INFORMATION//BASIC

<b>1. Incident Name:</b> <p style="text-align: center;"><b>KINCADE</b></p>	<b>2. Operational Period:</b> Date From: 10/28/19    Date To: 10/29/19 Time From: 0700    Time To: 0700	<b>3. Branch</b> <b>Division</b> <p style="text-align: center;"><b>V</b>    <b>H/L</b></p>
---	---	---

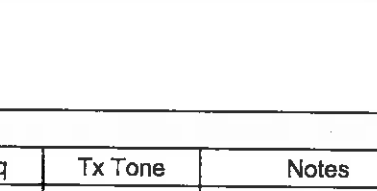
<b>4. Operations Personnel:</b>		Page 1 of 1
Operations Section Chief: <b>J. Ohs</b>	Night Ops: <b>B. Farrell / T. Lubas</b>	
Branch Director: <b>D. Esades</b>	Branch Safety:	
Division/Group Supervisor: <b>M. Batham / E. Sell (T)</b>	Air Attack:	

<b>5. Resources Assigned:</b>		** Resources Below in Bold are 12 Hour **					
Resource Identifier	ALS	LWD	Leader	Personnel	Request #	Hours	Reporting Location
STC OES 4081C			<b>A. Moreno</b>	17	<b>E-244</b>	0700-0700	ICP
STC XSJ 4180C			<b>T. Gooch</b>	18	<b>E-245</b>	0700-0700	ICP
<b>CRW T2 C-34</b>			<b>C. Orozco</b>	20	<b>C-34</b>	<b>0700-1900</b>	<b>ICP</b>
<b>CRW T2 C-35</b>			<b>J. Anderson</b>	20	<b>C-35</b>	<b>0700-1900</b>	<b>ICP</b>
<b>CRW T2 C-40</b>			<b>M. Casique Ortiz</b>	20	<b>C-40</b>	<b>0700-1900</b>	<b>ICP</b>
<b>CRW T2 C-50</b>			<b>J. Cisneros</b>	20	<b>C-50</b>	<b>0700-1900</b>	<b>ICP</b>
<b>CRW T2 C-52</b>			<b>A. Coronado</b>	20	<b>C-52</b>	<b>0700-1900</b>	<b>ICP</b>
DOZ LNU 1447			<b>B. Madole</b>	3	<b>E-7</b>	0700-0700	ICP
DOZ PVT E-16			<b>S. Garner</b>	2	<b>E-16</b>	0700-0700	ICP
DOZ PVT E-297			<b>A. Daniels</b>	0	<b>E-297</b>	0700-0700	ICP
WT PVT E-46			<b>B. Stent</b>	2	<b>E-46</b>	0700-0700	ICP
WT PVT E-51			<b>W. Connor</b>	2	<b>E-51</b>	0700-0700	ICP
WT PVT E-178			<b>T. Oferall</b>	2	<b>E-178</b>	0700-0700	ICP
WT PVT E-180			<b>M. Graves</b>	2	<b>E-180</b>	0700-0700	ICP
<b>EMPF SHERMAN</b>			<b>J. Sherman</b>	1	<b>O-543</b>	<b>0700-1900</b>	<b>ICP</b>
<b>EMPF POPE</b>			<b>R. Pope</b>	1	<b>O-547</b>	<b>0700-1900</b>	<b>ICP</b>

**6. Work Assignments:**  
Construct and hold line utilizing direct tactics and cold trail fingers & islands where necessary to prevent fire spread.  
Improve direct fire line. Mop up 300' in from control line.

**7. Special Instructions:**  
All NIFC Command channels are linked to operate as one. The command channel noted in the 204 is a recommendation and users may need to utilize one of the other NIFC Commands based off of geographical location.

<b>8. Communications</b>							
Name	Ch	Function	Rx Freq	Rx Tone	Tx Freq	Tx Tone	Notes
NIFC C3	2	COMMAND	170.4250		168.0750	131.8 (T3)	GEYSER PK LINKED W/C8 & C10
CDF T26	7	TACTICAL	159.2925	192.8 (T16)	159.2925	192.8 (T16)	BRANCH V
CDF T24	14	AIR TO GROUND	151.3325	192.8 (T16)	151.3325	192.8 (T16)	AIR TO GROUND
CALCORD	15	MEDICAL	156.0750	156.7 (T6)	156.0750	156.7 (T6)	EMERGENCY COORDINATIO
GUARD28	16	EMERGENCY	168.6250	CSQ	168.6250	110.9 (T1)	EMERGENCY USE ONLY

**9. Prepared by: Name:** J. Anderson / M. Selzer    **RESL**  
Signature:     Personnel Count: 150  
Date/Time: 10/27/2019 2200

ICS 204  
NIMS IAP

CONTROLLED UNCLASSIFIED INFORMATION//BASIC

# ASSIGNMENT LIST (ICS 204 WF)

CONTROLLED UNCLASSIFIED  
INFORMATION/BASIC

<b>1. Incident Name:</b> <b>KINCADE</b>	<b>2. Operational Period:</b> Date From: 10/28/19    Date To: 10/29/19 Time From: 0700        Time To: 0700	<b>3. Branch</b> <b>Division</b> <b>V</b> <b>M</b>
--	---	---

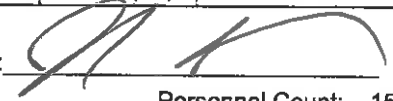
<b>4. Operations Personnel:</b>		Page 1 of 1	Mike
Operations Section Chief: <b>J. Ohs</b>	Night Ops: <b>B. Farrell / T. Lubas</b>		
Branch Director: <b>D. Esades</b>	Branch Safety:		
Division/Group Supervisor: <b>S. Grandahl / M. Orme (T)</b>	Air Attack:		

<b>5. Resources Assigned:</b>		<b>** Resources Below in Bold are 12 Hour **</b>					
Resource Identifier	ALS	LWD	Leader	Personnel	Request #	Hours	Reporting Location
STC CNT 2310C			M. Krisman	22	E-65	0700-0700	ICP
STC XRI 6074C	X		S. Kean	21	E-242	0700-0700	ICP
<b>CRWT2 C-24</b>			<b>R. Watkins</b>	20	<b>C-24</b>	<b>0700-1900</b>	<b>ICP</b>
<b>CRW T2 C-25</b>			<b>R. Pondelick</b>	20	<b>C-25</b>	<b>0700-1900</b>	<b>ICP</b>
<b>CRWT2 C-28</b>			<b>A. Aguirre</b>	20	<b>C-28</b>	<b>0700-1900</b>	<b>ICP</b>
<b>CRWT2 C-38</b>			<b>R. Teel</b>	20	<b>C-38</b>	<b>0700-1900</b>	<b>ICP</b>
<b>CRWT2 C-48</b>			<b>G. Rincon</b>	20	<b>C-48</b>	<b>0700-1900</b>	<b>ICP</b>
DOZ MEU 1145			M. Wilson	3	E-9	0700-0700	ICP
DOZ PVT E-28			D. Smith	2	E-28	0700-0700	ICP
DOZ PVT E-294			T. Stubbs	2	E-294	0700-0700	ICP
WT PVT E-53						0700-0700	ICP
WT PVT E-179			K. Merwin	2	E-179	0700-0700	ICP
WT PVT E-186			J. Corley	2	E-186	0700-0700	ICP
WT PVT E-187			M. Morris	1	E-187	0700-0700	ICP
EMPF INMAN			C. Inman	1	O-545	0700-0700	ICP
EMPF TUNNEY			N. Tunney	1	O-548	0700-0700	ICP

**6. Work Assignments:**  
Construct and hold line utilizing direct tactics and cold trail fingers & islands where necessary to prevent fire spread.  
Improve direct fire line. Mop up 300' in from control line.

**7. Special Instructions:**  
All NIFC Command channels are linked to operate as one. The command channel noted in the 204 is a recommendation and users may need to utilize one of the other NIFC Commands based off of geographical location.

<b>8. Communications</b>							
Name	Ch	Function	Rx Freq	Rx Tone	Tx Freq	Tx Tone	Notes
NIFC C3	2	COMMAND	170.4250		168.0750	131.8 (T3)	GEYSER PK LINKED W/CB & C10
CDF T27	8	TACTICAL	159.3075	192.8 (T16)	159.3075	192.8 (T16)	BRANCH V
CDF T24	14	AIR TO GROUND	151.3325	192.8 (T16)	151.3325	192.8 (T16)	AIR TO GROUND
CALCORD	15	MEDICAL	156.0750	156.7 (T6)	156.0750	156.7 (T6)	EMERGENCY COORDINAT
GUARD28	16	EMERGENCY	168.6250	CSQ	168.6250	110.9 (T1)	EMERGENCY USE ONLY

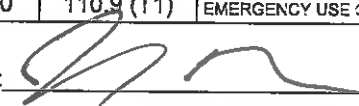
**9. Prepared by: Name:** J. Anderson / M. Selzer                      RESL  
Signature: 

**ICS 204**    Date/Time: 10/27/2019 2200    Personnel Count: 157



# ASSIGNMENT LIST (ICS 204 WF)

CONTROLLED UNCLASSIFIED  
INFORMATION//BASIC

<b>1. Incident Name:</b> <b>KINCADE</b>		<b>2. Operational Period:</b> Date From: 10/28/19    Date To: 10/29/19 Time From: 0700    Time To: 0700				<b>3. Branch</b> <b>Dry Creek</b>	
<b>4. Operations Personnel:</b> Operations Section Chief: <b>J. Ohs</b> Branch Director: <b>S. Andreis</b> Division/Group Supervisor: <b>R. Titus / K. Southerland / C. Ashby (T)</b>		Night Ops: <b>B. Farrell / T. Lubas</b> Branch Safety: Air Attack:				Page 1 of 2	
<b>5. Resources Assigned:</b>		<b>** Resources Below in Bold are 12 Hour **</b>					
Resource Identifier	ALS	LWD	Leader	Personnel	Request #	Hours	Reporting Location
STA RVC 6001A			J. Bischof	21	E-421	0700-0700	ICP
STA XOR 1423A			W. McQuaid	22	E-416	0700-0700	ICP
STA OES 1809A			C. Suen	22	E-422	0700-0700	ICP
STC LNU #1			S. Milosovich	15		0700-0700	ICP
ENG LNU 1470						0700-0700	ICP
ENG LNU 1471						0700-0700	ICP
ENG LNU 1480						0700-0700	ICP
ENG LNU 1481						0700-0700	ICP
ENG LNU 1497R						0700-0700	ICP
STC XST 4202C			J. Serpa	21	E-236	0700-0700	ICP
T/F XMY 2175			J. Lundgren	20	E-106	0700-0700	ICP
STG LMU 9220G						0700-0700	ICP
STG HUU 9124G			B. Bartlett	33	C-62	0700-0700	ICP
DOZ PVT E-286			B. Welch	0	E-286	0700-0700	ICP
DOZ PVT E-292			M. Rubio	2	E-292	0700-0700	ICP
DOZ PVT E-293			D. Briski	2	E-293	0700-0700	ICP
DOZ PVT E-296			M. Murdock	2	E-296	0700-0700	ICP
WT PVT E-56			P. Casini	2	E-56	0700-0700	ICP
<b>6. Work Assignments:</b> Structure Triage Preposition Resources							
<b>7. Special Instructions:</b> All NIFC Command channels are linked to operate as one. The command channel noted in the 204 is a recommendation and users may need to utilize one of the other NIFC Commands based off of geographical location.							
<b>8. Communications</b>							
Name	Ch	Function	Rx Freq	Rx Tone	Tx Freq	Tx Tone	Notes
NIFC C8	3	COMMAND	169.5375		164.7125	131.8 (T3)	MT. JACKSON LINKED W/ C3 & C10
NIFC T7	9	TACTICAL	168.2500	#N/A	168.2500		DRY CREEK BRANCH
CDF T24	14	AIR TO GROUND	151.3325	192.8 (T16)	151.3325	192.8 (T16)	AIR TO GROUND
CALCORD	15	MEDICAL	156.0750	156.7 (T6)	156.0750	156.7 (T6)	EMERGENCY COORDINATI
GUARD28	16	EMERGENCY	168.6250	CSQ	168.6250	110.9 (T1)	EMERGENCY USE ONLY
<b>9. Prepared by: Name:</b>		J. Anderson / M. Seizer		RESL		Signature: 	
ICS 204		Date/Time: 10/27/2019 2200				Personnel Count: 162	

NIMS IAP

CONTROLLED UNCLASSIFIED INFORMATION//BASIC











# ASSIGNMENT LIST (ICS 204 WF)

CONTROLLED UNCLASSIFIED  
INFORMATION/BASIC

<b>1. Incident Name:</b> <b>KINCADE</b>	<b>2. Operational Period:</b> Date From: 10/28/19    Date To: 10/29/19 Time From: 0700    Time To: 0700	<b>3. Branch</b> <b>Santa Rosa</b>  Page 1 of 1
--	---	--

<b>4. Operations Personnel:</b> Operations Section Chief: <b>J. Ohs</b> Branch Director: Division/Group Supervisor: <b>S. Ward</b>	Night Ops: <b>B. Farrell / T. Lubas</b> Branch Safety: Air Attack:
---	--

5. Resources Assigned:		** Resources Below in Bold are 12 Hour **					Hours	Reporting Location
Resource Identifier	ALS	LWD	Leader	Personnel	Request #			
STA XLG 1363A	X		<b>C. Besancency</b>	22	E-418	0700-0700	ICP	
STA XLE 1281A			<b>M. Brookhyser</b>	22	E-419	0700-0700	ICP	
STA OES 0810A			<b>A. Watkins</b>	17	E-329	0700-0700	ICP	
STC SCU 9161C			<b>M. Martin</b>	16	E-57	0700-0700	ICP	
STC NEU 9230C						0700-0700	ICP	
STC AEU 9270C			<b>M. Hill</b>	16	E-15	0700-0700	ICP	
STC XSB 1521C			<b>M. Gallagher</b>	22	E-227	0700-0700	ICP	
STC OES 2870C						0700-0700	ICP	
T/F XME 2150			<b>J. Tomen</b>	15	E-248	0700-0700	ICP	
STL SCU 9160L			<b>T. Chenoweth</b>	5	E-25	0700-0700	ICP	
DOZ PVT E-505			<b>L. Gill</b>	2	E-505	0700-0700	ICP	
WT PVT E-49			<b>H. Spurlock</b>	2	E-49	0700-0700	ICP	
WT PVT E-50			<b>F. Lutz</b>	2	E-50	0700-0700	ICP	
WT PVT E-182			<b>M. Van LANDINGHAM</b>	2	E-182	0700-0700	ICP	
HEQB BOND SHU			<b>J. Bondshu</b>	1	0-317	0700-0700	ICP	
SOFR						0700-0700	ICP	

**6. Work Assignments:**  
 Structure Triage  
 Preposition Resources

**7. Special Instructions:**  
 All NIFC Command channels are linked to operate as one. The command channel noted in the 204 is a recommendation and users may need to utilize one of the other NIFC Commands based off of geographical location.

8. Communications							
Name	Ch	Function	Rx Freq	Rx Tone	Tx Freq	Tx Tone	Notes
CDF T27	8	TACTICAL	159.3075	192.8 (T16)	159.3075	192.8 (T16)	BRANCH V
	#N/A	#N/A	#N/A	#N/A	#N/A	#N/A	#N/A
	#N/A						
CALCORD	15	MEDICAL	156.0750	156.7 (T6)	156.0750	156.7 (T6)	EMERGENCY COORDINATIO
GUARD28	16	EMERGENCY	168.6250	CSQ	168.6250	110.9 (T1)	EMERGENCY USE ONLY

<b>9. Prepared by: Name:</b>	J. Anderson / M. Selzer	RESL	Signature: _____
<b>ICS 204</b>	Date/Time: 10/27/2019 2200	Personnel Count: 144	









# AIR OPERATIONS SUMMARY ICS-220

**Incident Name / Number**  
KINCADE / CA-LNU-019376

**General Remarks, Safety Notes, Hazards, Air Operations Special Equipment, etc.**  
TRACK ALL DIPSITE LOCATIONS / NUMBER OF DIPS / GALLONS TAKEN.  
TRACK ALL DROP LOCATIONS / NUMBER OF DROPS / GALLONS DROPPED  
ALL GPS DATA TO BE COLLECTED IN DEGREES, MINUTES, DECIMAL MINUTES FORMAT.

*AVOID Aerial Application of Retardant / Foam / Agent within 300' of Waterways, Bodies of Water, etc.  
If Retardant / Foam / Agent is Dropped Within These Areas Immediately Notify the AOB/D and Provide the Following Information: Lat / Long, Estimated Number of Gallons and a Map Detailing The Area.*

CFR Windsor FD OES 374 E-133 / W/T's E-136 & E-137 / COMM TRLR E-107 / T2 TRLR E-113 / T1 TRLR E-139

**Sunrise** 0734  
**Sunset** 1815

**Cutoff** 1745

**Startup** 0804

**Tone**

**RX**

**AM / FM**

**Remarks / A #**

**TX**

**Tone**

**RX**

**AM / FM**

**Remarks / A #**

**Remarks / A #**

**Remarks / A #**

**Remarks / A #**

**Remarks / A #**

**Remarks / A #**

**Remarks / A #**

**Remarks / A #**

**Remarks / A #**

**Remarks / A #**

**Remarks / A #**

**Remarks / A #**

**Remarks / A #**

**Remarks / A #**

**Remarks / A #**

**Remarks / A #**

**Remarks / A #**

**Remarks / A #**

**Remarks / A #**

**Remarks / A #**

**Remarks / A #**

**Remarks / A #**

**Remarks / A #**

**Time Prepared**  
2000

**Shutdown**  
1845

**Helibase Information**

**Name** Cloverdale

**Latitude** 38 46.34N

**Longitude** 122 59.33W

**Name**

**Latitude**

**Longitude**

(use page 2 if needed)

**Position**

**Name**

**Phone**

**Phone**

**Phone**

**Phone**

**Phone**

**Phone**

**Phone**

**Phone**

**Phone**

**Phone**

**Phone**

**Phone**

**Phone**

**Phone**

**Phone**

**Phone**

**Phone**

**Phone**

**Phone**

**Phone**

**Phone**

**Phone**

**Phone**

**Phone**

**Date Prepared**  
Sunday, October 27, 2019

**Operational Period - Date**  
Monday October 28, 2019

**TFR Information**

**Request #**

**Radius:** 7 NM

**Altitude:** 10,000 MSL

**Centerpoint:** Polygon Lat Long

**NOTAMS:** 9 / 2484

**Frequency** 123.1750

<http://tfr.faa.gov/tfr2/list.html>

**Request Ship Information**

**Day Hoist**

**Name** 902

**Phone** Communications (925) 325-4168

**Make/Model** 205A+++

**Location** Cloverdale

**Request Procedure for These Aircraft:** Incident Communications

**See Medical Plan For Additional Info**

**Request Ship Information**

**Day Hoist**

**Name** 840

**Phone** (925) 325-4168

**Make/Model** 205A+++

**Location** Cloverdale

**Request Procedure for These Aircraft:** Incident Communications

**See Medical Plan For Additional Info**

**Request Ship Information**

**Day Hoist**

**Name** 840

**Phone** (925) 325-4168

**Make/Model** 205A+++

**Location** Cloverdale

**Request Procedure for These Aircraft:** Incident Communications

**See Medical Plan For Additional Info**

**Request Ship Information**

**Day Hoist**

**Prepared By**  
Tom Swanson

**Operational Period - Time**  
0700-0700

**Request Ship Information**

**Day Hoist**

**Name** 902

**Phone** Communications (925) 325-4168

**Make/Model** 205A+++

**Location** Cloverdale

**Request Procedure for These Aircraft:** Incident Communications

**See Medical Plan For Additional Info**

**Request Ship Information**

**Day Hoist**

**Name** 840

**Phone** (925) 325-4168

**Make/Model** 205A+++

**Location** Cloverdale

**Request Procedure for These Aircraft:** Incident Communications

**See Medical Plan For Additional Info**

**Request Ship Information**

**Day Hoist**

**Name** 840

**Phone** (925) 325-4168

**Make/Model** 205A+++

**Location** Cloverdale

**Request Procedure for These Aircraft:** Incident Communications

**See Medical Plan For Additional Info**

**Request Ship Information**

**Day Hoist**

**Name** 840

**Phone** (925) 325-4168

**Make/Model** 205A+++

**Location** Cloverdale

**Request Procedure for These Aircraft:** Incident Communications

**See Medical Plan For Additional Info**

**Request Ship Information**

**Day Hoist**

## HELICOPTERS ( Use page 2 if Needed )

FAA #	Type	Make/Model	Helibase	Avail	Start	Remarks / A #	FAA #	Type	Make/Model	Helibase	Avail	Start	Remarks
80SPJ	I	UH-60A	Cloverdale	0730	0800	Bucket / 15		I	UH-60L	Cloverdale	0730	0800	Water Dropping
2CK	I	S-61	Cloverdale	0730	0800	Tank / 18		I	UH-60L	Cloverdale	0730	0800	Water Dropping
3CK	I	S-61	Cloverdale	0730	0800	Bucket / 16		I	UH-60L	Cloverdale	0730	0800	Water Dropping
36S	I	S-64	Cloverdale	0730	0800	Tank / 41	7PJ	II	205++	Cloverdale	0730	800	Restricted / 20
92HT	I	S-64	Cloverdale	0730	0800	Tank / 17	2AH	II	212	Cloverdale	0730	800	Standard / 21
17FH	I	UH60A	Cloverdale	0730	0800	Longline / 79	5TK	II	205	Cloverdale	0730	800	Standard / 22
1KA	I	K-MAX	Cloverdale	0730	0800	Longline / 80	1NE	II	205	Cloverdale	0730	800	Restricted / 19
25M	I	S-64	Cloverdale	0730	0800	Tank / 120	902	II	205	Cloverdale	0730	800	Hoist / 30
3HT	I	S-64	Cloverdale	0730	0800	Tank / 121	4SH	III	A-Star	Cloverdale	0730	800	Helco / 23
5HT	I	S-64	Cloverdale	0730	0800	Tank / 122	7AC	III	407	Cloverdale	0730	800	Helco / 24
1AJ	I	CH-47	Cloverdale	0730	0800	Longline / 123	5AS	III	407	Cloverdale	0730	800	Recon / 83
5CK	I	S-61	Cloverdale	0730	0800	Longline / 124							
	I	CH-47	Cloverdale	0730	0800	Water Dropping / 125							
	I	CH-47	Cloverdale	0730	0800	Water Dropping / 126							
	I	UH-60L	Cloverdale	0730	0800	Water Dropping							

## FIXED WING ( Use Page 2 if Needed )

FAA #	Type	Make/Model	Base	Avail	Start	Remarks	FAA #	Type	Make/Model	Base	Avail	Start	Remarks
AA503		A200CT	Santa Rosa	800	800								
AA140		OV-10	Santa Rosa	800	800								
AA605		OV-10D	MCC	800	800	ASM - Charlie							
T85	III	S-2	Santa Rosa	800	800								
T86	III	S-2	Santa Rosa	800	800								

**Prepared By** Tom Swanson

## MEDICAL PLAN (ICS 206)

<b>1. Incident Name:</b> <p style="text-align: center; margin-top: 5px;"><b>KINCADE</b></p>		<b>2. Operational Period:</b> Date From: 10/28/19 Date To: 10/29/19 Time From: 0700 Time To: 0700					
<b>3. Medical Aid Stations:</b>							
Name	Location	Contact Number/Freq	Paramedics				
CalMAT	Base Camp	916-837-1063	<input type="checkbox"/> No				
<b>4. Transportation (Indicate air or ground):</b>							
Ambulance Service	Location	Contact Number	Level of Service				
Bells Ambulance #685	438 Powell Ave. Healdsburg, CA 95448	707-433-1114	ALS				
Cal-Ore Ambulance #744	202 Dale Rupert Rd. Crescent City, Ca 95531	541-469-7911	ALS				
AMR- Stanislaus #745	930 "A" St. Santa Rosa, Ca 95404	707-9345-7200	ALS				
REACH Air Ambulance	2360 Becker Blvd Santa Rosa, CA 95403	800-338-4045	ALS				
<b>5. Hospitals:</b>							
Hospital Name	Address,	Contact Number(s)/ Frequency	Travel Time		Trauma Center	Burn Center	Helipad
	Lat & Long Helipad		Air	Ground			
Santa Rosa Memorial	1165 Montgomery Dr. Santa Rosa, CA 95405	707-525-5300	12 min	30 min	Level 2	<input type="checkbox"/>	<input checked="" type="checkbox"/>
Petaluma Valley Hospital	400 N. Mcdowell Blvd. Petaluma, Ca 94954	707-778-2634	15min	45min		<input type="checkbox"/>	<input checked="" type="checkbox"/>
Ukiah Valley Med Ctr.	275 Hospital Dr. Ukiah Dr. Ca 95482	707-468-1165	20 min	60 min	Level 4	<input type="checkbox"/>	<input checked="" type="checkbox"/>
UC Davis Med Center	2315 Stockton Blvd Sacramento, CA	916-734-7122	30 min	4 hrs	Level 1	<input checked="" type="checkbox"/>	<input checked="" type="checkbox"/>
						<input type="checkbox"/>	<input type="checkbox"/>
<b>6. Special Medical Emergency Procedures</b>							
<b>Line Emergency</b> Crew Supervisor will contact Division Supervisor with patient complaint/condition and location. - Division Group Supervisor Contacts: 1. Closest EMS resource 2. Communications Unit - Communications Unit Contacts: 1. Ground or Air ambulance as requested. 2. Operations 3. Safety 4. Medical Unit - Division Supervisor or designee will serve as point of contact and run medical emergency on assigned channel. 1. A pre-assigned tactical frequency (i.e. CALCORD) should be used for IWI and only for duration of the emergency. - Communications Unit will clear the Command channel for emergency traffic as needed for duration of the need.  <b>Camp Emergency</b> Contact Medical Unit with patient complaint/condition and location. Medical staff will respond to stabilize the patient. - Medical Unit contacts 1. Communications 2. Safety 3. Logistics 4. Operations 5. Crew Supervisor 6. Comp/Claims				<b>Injury Reporting Procedures</b>  Nature of Injury: _____ Location of Patient: _____ Point of Contact: _____ Transportation Requested by: Air _____ Ground _____ Point of Pick-Up: _____ Lat: _____ Long: _____ Patient Unit ID: _____ Is an EMT with Patient: Yes _____ No _____ Age: _____ Sex: Male _____ Female _____  <b>All Emergencies - Secure the area and identified witnesses for later investigation. Keep accurate log of events.</b>			
<input type="checkbox"/> Check box if aviation assets are utilized for rescue. If assets are used, coordinate with Air Operations.							
<b>7. Prepared by (Medical Unit Leader):</b> Eric Castellanos (MEDL)				Signature:			
<b>8. Approved by (Safety Officer):</b> Jorge Segura (SOF1)				Signature:			
ICS 206		Date/Time:		2019-10-27 2000			



# ICS 205 - INCIDENT RADIO COMMUNICATIONS PLAN

CONTROLLED UNCLASSIFIED  
INFORMATION//BASIC

<b>1. Incident Name:</b> KINGADE BRANCH I / V / CALISTOGA	<b>2. Date/Time Prepared</b> Date: 10/27/2019 Time: 1930	<b>3. Operational Period:</b> Date From: 10/28/19 Date To: 10/29/19 Time From: 0700 Time To: 0700
---	--	---

4. Communications									
Ch#	Function	Name	Assigned To	Rx Freq	Rx Tone	Tx Freq	Tx Tone	Notes	
1									
2	COMMAND	NIFC C3	ALL DIVS	170.4250		168.0750	131.8 (T3)	GEYSER PK LINKED W/C8 & C10	
3	COMMAND	NIFC C8	ALL DIVS	169.5375		164.7125	131.8 (T3)	MT. JACKSON LINKED W/ C3 & C10	
4	COMMAND	NIFC C10	ALL DIVS	170.4125		165.9625	131.8 (T3)	MT. ST. HELENA LINKED W/ C3 & C8	
5									
6									
7	TACTICAL	CDF T26	DIV H / L	159.2925	192.8 (T16)	159.2925	192.8 (T16)	BRANCH V	
8	TACTICAL	CDF T27	DIV M	159.3075	192.8 (T16)	159.3075	192.8 (T16)	BRANCH V	
9	TACTICAL	CDF T29	DIV P	151.3475	192.8 (T16)	151.3475	192.8 (T16)	BRANCH V	
10	TACTICAL	CDF T30	DIV A	151.3925	192.8 (T16)	151.3925	192.8 (T16)	BRANCH I	
11	TACTICAL	CDF T31	DIV B	159.3825	192.8 (T16)	159.3825	192.8 (T16)	BRANCH I	
12	TACTICAL	CDF T32	DIV D	151.2425	192.8 (T16)	151.2425	192.8 (T16)	BRANCH I	
13	TACTICAL	VFIRE 24	CALISTOGA CONT.	154.2725	156.7 (T6)	154.2725	156.7 (T6)	CALISTOGA CONTINGENCY	
14	AIR TO GROUND	CDF T24	ALL DIVS	151.3325	192.8 (T16)	151.3325	192.8 (T16)	AIR TO GROUND	
15	MEDICAL	CALCORD	ALL DIVS	156.0750	156.7 (T6)	156.0750	156.7 (T6)	EMERGENCY COORDINATION	
16	EMERGENCY	GUARD28	ALL DIVS	168.6250	CSQ	168.6250	110.9 (T1)	EMERGENCY USE ONLY	
17									
18									
19									
20	EMERGENCY	GUARD28	ALL DIVS	168.6250	CSQ	168.6250	110.9 (T1)	EMERGENCY USE ONLY	

**5. Special Instructions**

**TO CONFIRM THE MOST CURRENT CLONE, ENSURE YOUR CHANNEL 16 OR 20 DISPLAY MATCHES CHANNEL 16 OR 20 OF THE 205**

<b>6. Prepared by (Communications Unit Leader):</b> Name: John Brooks (COML)	Signature: Date/Time: 10/27/19 1930
--	--

ICS 205 - CONTROLLED UNCLASSIFIED INFORMATION//BASIC

# ICS 205 - INCIDENT RADIO COMMUNICATIONS PLAN

**1. Incident Name:**  
**KINGADE**  
**BRANCH III / DRY CREEK / CONT.**


**2. Date/Time Prepared** Date: 10/27/2019 Time: 1930  
**3. Operational Period:** Date From: 10/28/19 Date To: 10/29/19  
 Time From: 0700 Time To: 0700

4. Communications		Name	Assigned To	Rx Freq	Rx Tone	Tx Freq	Tx Tone	Notes
Ch#	Function							
1								
2	COMMAND	NIFC C3	ALL DIVS	170.4250		168.0750	131.8 (T3)	GEYSER PK LINKED W/C8 & C10
3	COMMAND	NIFC C8	ALL DIVS	169.5375		164.7125	131.8 (T3)	MT. JACKSON LINKED W/ C3 & C10
4	COMMAND	NIFC C10	ALL DIVS	170.4125		165.9825	131.8 (T3)	MT. ST. HELENA LINKED W/ C3 & C8
5								
6								
7	TACTICAL	NIFC T5	DIV E	166.7250		166.7250		BRANCH III
8	TACTICAL	NIFC T6	DIV F	166.7750		166.7750		BRANCH III
9	TACTICAL	NIFC T7	DIV G & I	168.2500		168.2500		DRY CREEK BRANCH
10	TACTICAL	VFIRE 25	SANTA ROSA BRANCH	154.2875	156.7 (T6)	154.2875	156.7 (T6)	
11	TACTICAL	VFIRE 24	RIVER BRANCH	154.2725	156.7 (T6)	154.2725	156.7 (T6)	
12	TACTICAL	CDF T26	SEBASTOPOL BRANCH	159.2925	192.8 (T16)	159.2925	192.8 (T16)	
13	TACTICAL	CDF T29	OCCIDENTAL BRANCH	151.3475	192.8 (T16)	151.3475	192.8 (T16)	
14	AIR TO GROUND	CDF T24	ALL DIVS	151.3325	192.8 (T16)	151.3325	192.8 (T16)	AIR TO GROUND
15	MEDICAL	CALCORD	ALL DIVS	156.0750	156.7 (T6)	156.0750	156.7 (T6)	EMERGENCY COORDINATION
16	EMERGENCY	GUARD28	ALL DIVS	168.6250	CSQ	168.6250	110.9 (T1)	EMERGENCY USE ONLY
17								
18								
19								
20	EMERGENCY	GUARD28	ALL DIVS	168.6250	CSQ	168.6250	110.9 (T1)	EMERGENCY USE ONLY

**5. Special Instructions**

**TO CONFIRM THE MOST CURRENT CLONE, ENSURE YOUR CHANNEL 16 OR 20 DISPLAY MATCHES CHANNEL 16 OR 20 OF THE 205**

**6. Prepared by (Communications Unit Leader):** Name: John Brooks (COML)

Signature: 

ICS 205 - CONTROLLED UNCLASSIFIED INFORMATION/BASIC

NIMS IAP Date/Time: 10/27/19 1930

# **TRAINING MESSAGE**

## **TRAINERS**

**REMEMBER TO REVIEW THE TASK BOOK WITH YOUR TRAINEE EACH DAY AND SET GOALS FOR THE OPERATIONAL PERIOD.**

## **TRAINEES**

**ALWAYS KEEP YOUR TASK BOOK SECURED. IF LOST, YOU RUN THE RISK OF LOSING CREDIT FOR THE TASKS COMPLETED.**

**Don't train until you get it right, train until you cannot get it wrong!**

**Any questions please contact the  
Training Specialist:  
Shane Vargas (530) 410-4225**



# DEMOBILIZATION INSTRUCTIONS KINCADE CA-LNU-019376



## DEMOB PROCEDURES

- CHECK THE DEMOB LIST EACH MORNING. YOU CAN FIND THE DEMOB LIST THROUGH THE "QR" CODE ON THE I.A.P. COVER OR ON LISTS POSTED THROUGHOUT CAMP. **ONLY REPORT TO DEMOB AT YOUR SCHEDULED TIME.** EARLY ADMITTANCE WILL NOT BE ALLOWED.
- **FLIGHT ARRANGEMENTS MUST BE MADE 48HRS PRIOR TO RELEASE.**
- REPORT TO DEMOB AT APPOINTMENT TIME TO RECEIVE A CHECKOUT FORM (ICS-221), THEN GO TO THE FOLLOWING UNITS TO OBTAIN THE NECESSARY SIGNATURES:
  - ✓ SUPPLY UNIT
  - ✓ COMMUNICATIONS UNIT
  - ✓ GROUND SUPPORT/VEHICLE INSPECTION\*\*\*
  - ✓ DOCUMENTATION UNIT
  - ✓ TIME UNIT
  - ✓ TRAINING UNIT (IF APPLICABLE)
  - ✓ ACCOMMODATIONS (IF APPLICABLE)

### \*\*\*VEHICLE INSPECTION:

- THE DEMOB UNIT WILL INFORM YOU IF THE VEHICLE NEEDS TO BE INSPECTED.
- YOU MUST HAVE THE ICS-221 DEMOB FORM WITH YOU AT VEHICLE INSPECTION.
- A VEHICLE INSPECTION TIME WILL BE PROVIDED WHEN YOU INITIALLY ARRIVE TO THE DEMOBILIZATION UNIT.
- **DO NOT REPORT FOR VEHICLE INSPECTION PRIOR TO YOUR APPOINTMENT**

**HAVE YOUR EQUIPMENT INVENTORY CARD READY WHEN HEADING TO VEHICLE INSPECTION.**

**RETURN THE COMPLETED ICS-221 FORM TO THE DEMOB UNIT AND TRAVEL HOME SAFE!**

## **KINCADE FINANCE MESSAGE**

### **Shift Tickets:**

- DIVS and OPBD must complete shift tickets for all hired equipment, including fallers and runners.
- Turn in completed shift tickets daily to the Time Unit.
- Shift Ticket examples are in the IAP.

### **eFC-33:**

- Report to the Time Unit for initial inputs and updates.

### **COMP/CLAIMS:**

- If any Claims issues arise, document on a ICS-213 and take pictures. Notify the COMP/CLAIMS Unit ASAP for follow-up.
- Computers are setup for IAPS data entry for CAL FIRE personnel.

### **Out-of-State Resources:**

- Single resources report to the Northwest Crews AREP located across from the Finance trailers. Drop off a copy of your agreement/contract as well as CTRs or shift tickets.
- Strike teams report to the OES Incident Support unit located next to Finance trailers. AREPs and forms will be located there.



### 24HR LINE RESOURCE - 2 OPERATOR

EMERGENCY SHIFT TICKET and EVALUATION FORM The responsible Government Officer will complete this form each shift.		Contractor Name <b>THE BEST DOZERS LLC</b>	
Incident or Project Name <b>KINCADE</b>	Request Number <b>E-444</b>	Operator #1 <b>FIRST &amp; LAST</b>	Operator #2 <b>FIRST &amp; LAST</b>
Agreement Number <b>MMU-0000015953</b>	Equipment Model / Type <b>TRANSPORT 18 WHEEL</b>	Operator Furnished By: <input checked="" type="checkbox"/> Contractor <input type="checkbox"/> Government	
Serial Number <b>COMPLETE VIN# 12345A1</b>	License Number <b>12345A1</b>	Operating Supplies Furnished By: <input checked="" type="checkbox"/> Contractor <input type="checkbox"/> Government	
Equipment Use (Circle) Hours Days / Miles		Equipment Status <input checked="" type="checkbox"/> Under Agreement	
Date Mo / Day	Work Stop	Released by Government	
9/5	0701 2400	Withdrawn by Contractor	
9/6	0001 0700	Remarks/Comments** <b>2 OPERATORS</b>	
Vendor Rating		NO DAMAGE / NO CLAIM	
Poor*	Avg. Good Exc.	Govt. Rep. Name and Position - PRINT	
		Print Your Name	
Met Performance Expectations		Govt. Rep. Signature	
Equipment in Safe Working Condition		Years Signature	
Operator Skill Level		Contractor Signature	
Operates Safely		John Smith	
Operator's Cooperation Level		Date	
Overall Performance		Time	
		9/6/17	
		0700	
		CAL FIRE 297	
		(Rev 3-2011)	

### 12HR LINE RESOURCE - 1 OPERATOR

EMERGENCY SHIFT TICKET and EVALUATION FORM The responsible Government Officer will complete this form each shift.		Contractor Name <b>THE BEST DOZERS LLC</b>	
Incident or Project Name <b>KINCADE</b>	Request Number <b>E-555</b>	Operator #1 <b>FIRST &amp; LAST</b>	Operator #2 <b>-</b>
Agreement Number <b>MMU-0000015955</b>	Equipment Model / Type <b>D6N / TYPE IIE</b>	Operator Furnished By: <input checked="" type="checkbox"/> Contractor <input type="checkbox"/> Government	
Serial Number <b>COMPLETE VIN#</b>	License Number <b>-</b>	Operating Supplies Furnished By: <input checked="" type="checkbox"/> Contractor <input type="checkbox"/> Government	
Equipment Use (Circle) Hours Days / Miles		Equipment Status <input checked="" type="checkbox"/> Under Agreement	
Date Mo / Day	Work Stop	Released by Government	
9/7	0001 0700	Withdrawn by Contractor	
9/7	0701 1900	Remarks/Comments** <b>1 OPERATOR</b>	
9/7	1901 2400		
Vendor Rating		NO DAMAGE / NO CLAIM	
Poor*	Avg. Good Exc.	Govt. Rep. Name and Position - PRINT	
		Print Your Name	
Met Performance Expectations		Govt. Rep. Signature	
Equipment in Safe Working Condition		Years Signature	
Operator Skill Level		Contractor Signature	
Operates Safely		John Smith	
Operator's Cooperation Level		Date	
Overall Performance		Time	
		9/6/17	
		1900	
		CAL FIRE 297	
		(Rev 3-2011)	

### 24HR / 12HR TRANSITION SHIFT TICKET

EMERGENCY SHIFT TICKET and EVALUATION FORM The responsible Government Officer will complete this form each shift.		Contractor Name <b>THE BEST DOZERS LLC</b>	
Incident or Project Name <b>KINCADE</b>	Request Number <b>E-444</b>	Operator #1 <b>FIRST &amp; LAST</b>	Operator #2 <b>FIRST &amp; LAST</b>
Agreement Number <b>MMU-0000015953</b>	Equipment Model / Type <b>TRANSPORT 18 WHEEL</b>	Operator Furnished By: <input checked="" type="checkbox"/> Contractor <input type="checkbox"/> Government	
Serial Number <b>COMPLETE VIN# 12345A1</b>	License Number <b>12345A1</b>	Operating Supplies Furnished By: <input checked="" type="checkbox"/> Contractor <input type="checkbox"/> Government	
Equipment Use (Circle) Hours Days / Miles		Equipment Status <input checked="" type="checkbox"/> Under Agreement	
Date Mo / Day	Work Stop	Released by Government	
9/6	0701 1900	Withdrawn by Contractor	
9/6	1901 2400	Remarks/Comments** <b>2 OPERATORS</b>	
Vendor Rating		NO DAMAGE / NO CLAIM	
Poor*	Avg. Good Exc.	Govt. Rep. Name and Position - PRINT	
		Print Your Name	
Met Performance Expectations		Govt. Rep. Signature	
Equipment in Safe Working Condition		Years Signature	
Operator Skill Level		Contractor Signature	
Operates Safely		John Smith	
Operator's Cooperation Level		Date	
Overall Performance		Time	
		9/6/17	
		1900	
		CAL FIRE 297	
		(Rev 3-2011)	

### 24HR IN CAMP RESOURCE

EMERGENCY SHIFT TICKET and EVALUATION FORM The responsible Government Officer will complete this form each shift.		Contractor Name <b>THE BEST CAMP LLC</b>	
Incident or Project Name <b>KINCADE</b>	Request Number <b>E-333</b>	Operator #1 <b>FIRST &amp; LAST</b>	Operator #2 <b>-</b>
Agreement Number <b>MMU-0000015950</b>	Equipment Model / Type <b>WESTERN SHELTER 19X35</b>	Operator Furnished By: <input checked="" type="checkbox"/> Contractor <input type="checkbox"/> Government	
Serial Number <b>TENT</b>	License Number <b>-</b>	Operating Supplies Furnished By: <input checked="" type="checkbox"/> Contractor <input type="checkbox"/> Government	
Equipment Use (Circle) Hours Days / Miles		Equipment Status <input checked="" type="checkbox"/> Under Agreement	
Date Mo / Day	Work Stop	Released by Government	
9/2	0001 2400	Withdrawn by Contractor	
		Remarks/Comments** <b>(4) TENTS, CAMPOY W/SHDES FLOOR &amp; INSULATED ROOF 570sq ft NO DAMAGE / NO CLAIM</b>	
Vendor Rating		NO DAMAGE / NO CLAIM	
Poor*	Avg. Good Exc.	Govt. Rep. Name and Position - PRINT	
		Print Your Name	
Met Performance Expectations		Govt. Rep. Signature	
Equipment in Safe Working Condition		Years Signature	
Operator Skill Level		Contractor Signature	
Operates Safely		John Smith	
Operator's Cooperation Level		Date	
Overall Performance		Time	
		9/6/17	
		1908	
		CAL FIRE 297	
		(Rev 3-2011)	

STATE OF CALIFORNIA  
 DEPARTMENT OF FORESTRY AND FIRE PROTECTION  
**PROPERTY CERTIFICATION OF LOCATION OR DAMAGE**  
**CERTIFICATE OF RESPONSIBILITY FOR INCIDENT OCCURRENCE**  
 CAL FIRE-101 page 1 of 2 (1/07)

<b>Incident#:</b>
<b>Request #:</b>

DOC. NUMBER:
--------------

LOCATION / INCIDENT NAME:	INCIDENT NUMBER:	UNIT:	REGION:	DATE:
---------------------------	------------------	-------	---------	-------

THE FOLLOWING ARTICLES WERE: (broken, left on line, damaged, or other)	DATE OF OCCURRENCE:
--	---------------------

QUANTITY	UNIT OF MEAS.	CAL FIRE STOCK NUMBER (COMPLETE WHENEVER ASSIGNED)	DESCRIPTION <small>(INDICATE SIZE, MAKE, MODEL, TYPE, ETC., TO CLEARLY DESCRIBE THE ITEM. PROVIDE ADEQUATE DATA TO EFFECTIVELY IDENTIFY EQUIPMENT OR PROPERTY.)</small>	PROPERTY NUMBER

<b>DIV: _____ Div's Name: _____</b> <b>Div. Signature: _____</b> Attention Division Group Sup., by signing you are authorizing the above items to be replaced by the Supply Unit and / or Fire.
---

LOCATION OF ITEMS: \_\_\_\_\_

REMARKS: \_\_\_\_\_

\_\_\_\_\_

\_\_\_\_\_

SIGNATURE OF PERSON CERTIFYING OCCURRENCE AS DESCRIBED			
SIGNATURE:	PRINTED NAME:	TITLE:	DATE:
UNIT SUPERVISOR'S APPROVAL			
COMMENTS:			
SIGNATURE OF UNIT ADMINISTRATOR:		TITLE:	DATE:



# PUBLIC INFORMATION



## Official Sources of Public Information

**Incident Information Line: (707) 967-4207**

**Incident Media Line: (707) 583-1479**

**Incident Website: [www.fire.ca.gov](http://www.fire.ca.gov)**

### Media Law

The California State Penal Code Section 409.5(d) allows the news media to enter scenes of disaster, riot, or civil disturbance. Properly identified members of the news media should not be restricted from entering locations specified within the code. However, this does not include crime scenes, and does not imply that the news media may interfere with incident operations while they are in the areas of concern. If entering such a location that is hazardous, they should be advised; media access cannot be prevented for safety reasons unless their presence would impede CAL FIRE's mitigation of the incident or the disturbing of evidence. When working around the media, remember:

- Media is **not permitted** on private property without the property owners permission.
- If approached and questioned by the media and or the public, talk about your assignment or task at hand. Remember to wear all the appropriate PPE.
- If needed call for an incident PIO through the chain of command.
- Never speculate, give opinions or speak for others.
- There is no such thing as an "off the record" comment.

### CAL FIRE Social Media Policy (Social Media 0691)

Social Media is increasingly being used by public agencies, the media as well as the public. This form of communication continues to grow rapidly in order to supply the instant gratification needs of society. Therefore when on a CAL FIRE incident you will adhere to the CAL FIRE Social Media Policy, 0691. You can get further information about the CAL FIRE Social Media Policy from the incident Public Information Officer. While assigned to the incident, there will be no posting of:

- Inappropriate information or materials
- No opinions
- No endorsements
- Inappropriate pictures or videos

### Lost and Found

The Information Section will manage Lost and Found items for the incident. If you have lost an item leave your contact information and what you have lost at the Information Section. If you have found an item on the incident bring the item to the Information Section with your contact information as well.

## Incident Base Camp Mailing Address

**c/o Public Information Office  
1350 Bennett Valley Rd.  
Jockey Club Entrance  
Santa Rosa, CA 95404**



## **Archaeological and Historic Properties: General Fire-line Guidance.**

**Do not compromise safety for the protection and preservation of archaeological and historic properties.  
When possible and prudent:**

1. Be on the lookout for prehistoric and historic archaeological sites. These sites typically occur adjacent to streams and springs, confluences are often especially sensitive. However, sites can occur in other areas too. The most common indicators of prehistoric sites in this area (North Coast Ranges) are scatters of shiny black obsidian flakes from tool making activities and dark midden soils. Historic-era sites include homesteads that contain foundations, rock chimneys, and stone / brick-lined wells. Historic-era mining sites are possible as well.
2. Note, that not much of the area has ever been surveyed for archaeological resources and many sites out there have yet to be discovered.
3. If you observe archaeological resources, flagged or unflagged, attempt to avoid with ground disturbing activities altogether.
4. If avoidance is not possible, minimize ground disturbance. Use a hand crew rather than a dozer to remove fuels from control lines that must cross site areas if possible.
5. Leave all artifacts in place as some may have been intentionally placed for religious or ceremonial reasons.
6. Note locations of discovered resources on a map, better yet, take site coordinates with a GPS. Leave information for the archaeologist so that the sites can be relocated and protected during Fire Suppression Repair. Flag the site in red if possible.
7. If you encounter a burial or other human remains, cease work in that area and contact the archaeologist immediately.

Your help preserving California's non-renewable cultural resources is appreciated.

### **Contact Information:**

Christopher Lloyd  
Ukiah Field Office Archaeologist  
Bureau of Land Management  
(707) 468-4075  
[crloyd@blm.gov](mailto:crloyd@blm.gov)

Ben Harris  
Associate State Archaeologist for CAL-Fire's Northern Region  
Coverage area: MEU, LNU, CZU, and SCU  
Northern Region Headquarter  
135 Ridgway Avenue  
Santa Rosa, CA 95401  
Office: (707) 576-2966  
Mobile: (707) 529-7989  
[Ben.harris@fire.ca.gov](mailto:Ben.harris@fire.ca.gov)

# KINCADE Incident Maps may be accessed by

going to:

<https://ftp.nifc.gov>

or google: "nifc ftp"

Click:

>Incident Specific Data

>calif\_n

>!CALFIRE

>2019\_incidents

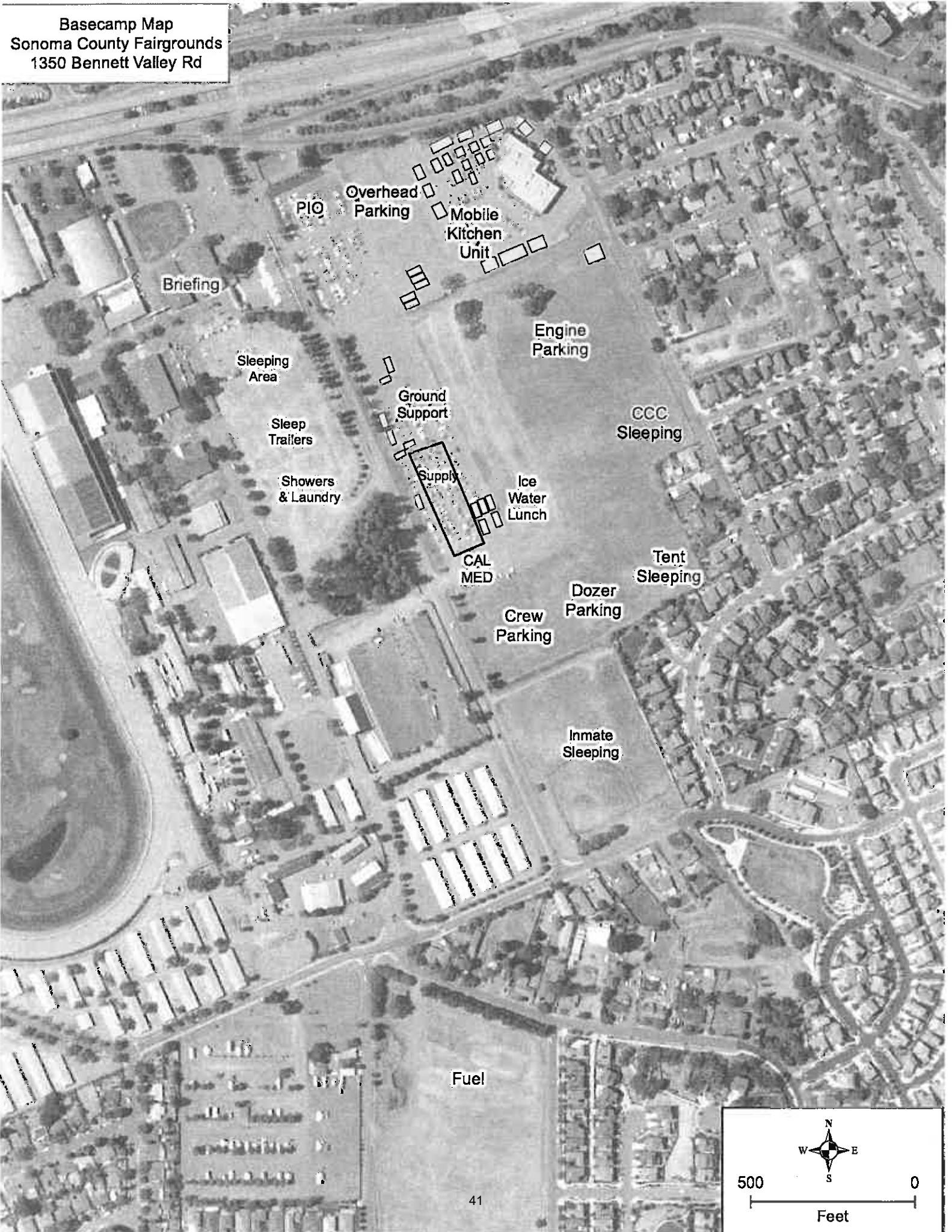
>CA-LNU-019376\_Kincade

>GIS >Products

> Desired Date > Select desired map

\*Generally, the single most beneficial map to download is the Ops Map

Basecamp Map  
Sonoma County Fairgrounds  
1350 Bennett Valley Rd



Briefing

PIO

Overhead  
Parking

Mobile  
Kitchen  
Unit

Engine  
Parking

Sleeping  
Area

Sleep  
Trailers

Ground  
Support

CCC  
Sleeping

Showers  
& Laundry

Supply

Ice  
Water  
Lunch

CAL  
MED

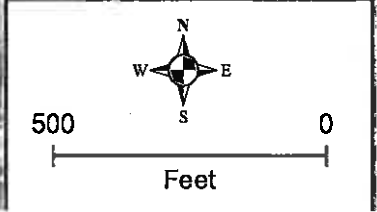
Tent  
Sleeping

Crew  
Parking

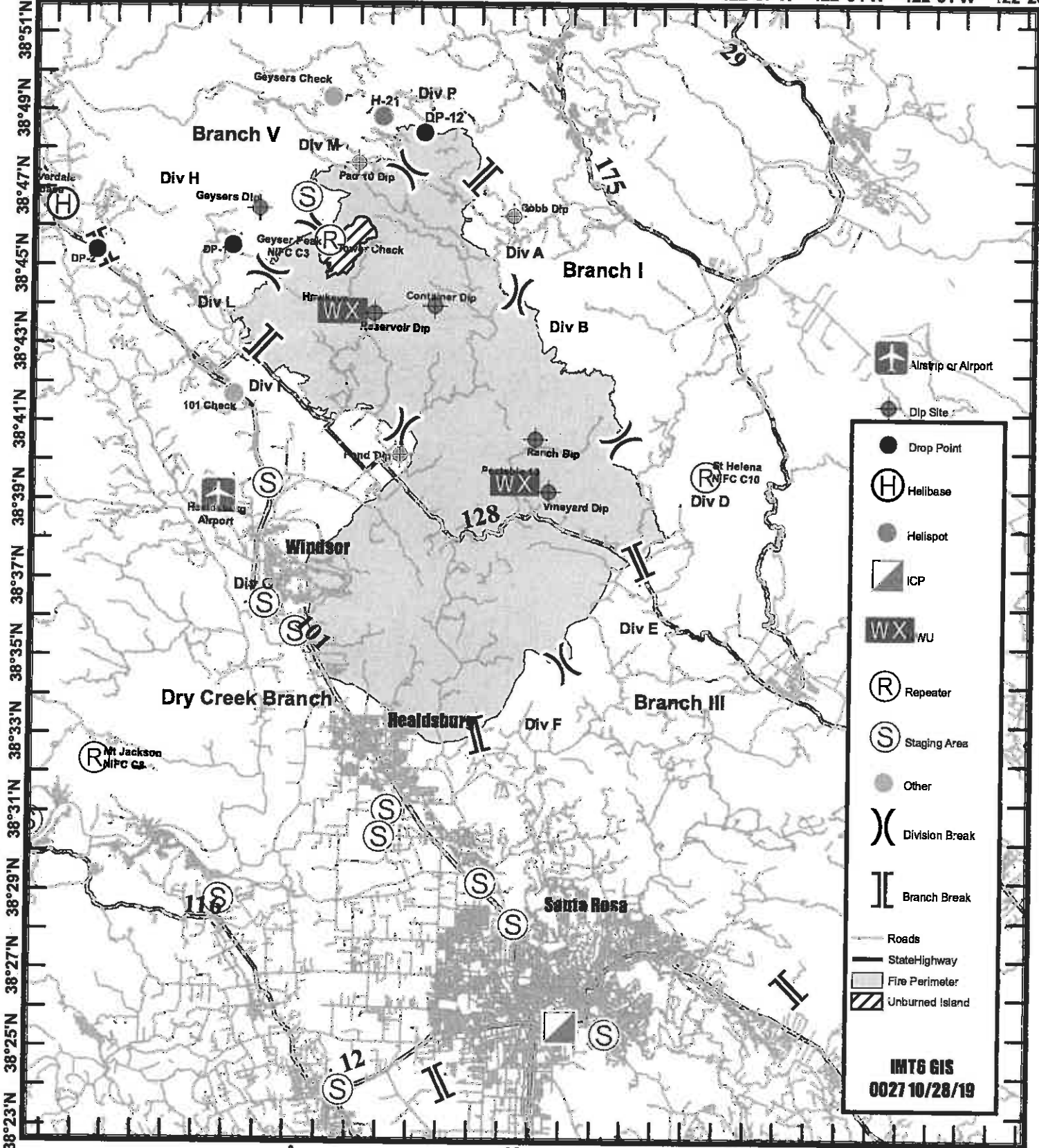
Dozer  
Parking

Inmate  
Sleeping

Fuel



122°58'W 122°55'W 122°52'W 122°49'W 122°46'W 122°43'W 122°40'W 122°37'W 122°34'W 122°31'W 122°28'W



**IMT6 GIS**  
0027 10/28/19



**Travel Map**  
**Kincadee Incident**  
**CA-LNU-019376**  
**October 28, 2019**





