

**\* CORRECTED \***

# INCIDENT ACTION PLAN KINCADE INCIDENT

CA-LNU-019376

Wednesday



## OPERATIONAL PERIOD

10/30/2019 0700

to

10/31/2019 0700





# INCIDENT OBJECTIVES (ICS 202)

<b>1. Incident Name:</b> <p style="text-align: center;">KINCADE</p>	<b>2. Operational Period:</b>	Date From: 10/30/2019	Date To: 10/31/2019
		Time From: 0700	Time To: 0700

**3. Objective(s):**

**Management Objectives**

- Provide for emergency personnel and public safety at all times.
- Protect property, improvements, and infrastructure.
- Ensure repopulation takes place in a quick, efficient and effective manner.
- Ensure coordinated, timely and accurate release of public information.
- Foster and maintain relationships with all cooperators and stakeholders.
- Protect economic, natural, cultural and heritage resources.
- Maintain fiscal accountability and keep costs commensurate with values at risk.

**Control Objectives**

- Keep the fire West of Hwy 175
- Keep the fire South of 7 Mile Control
- Keep the fire East of Cazadero Hwy
- Keep the fire North of Hwy 116

**General Situational Awareness:**

Steep and rugged terrain, critically dry and receptive fuel beds, active area for fire history. Operational area is predicted to be under Red Flag conditions through the afternoon. Be aware of predicted weather and wind changes. Review the weather forecast for more information.

**5. Site Safety Plan Required?** Yes  No

**Approved Site Safety Plan(s) Located at:**

**6. Incident Action Plan**

<input checked="" type="checkbox"/> ICS 203	<input checked="" type="checkbox"/> ICS 215A	<input type="checkbox"/> Phone List	<input type="checkbox"/> Fire Suppression Repair Plan
<input checked="" type="checkbox"/> ICS 204	<input checked="" type="checkbox"/> ICS 220	<input checked="" type="checkbox"/> Training Message	<input type="checkbox"/>
<input checked="" type="checkbox"/> ICS 205	<input checked="" type="checkbox"/> Incident Map	<input checked="" type="checkbox"/> Travel Map	<input type="checkbox"/>
<input checked="" type="checkbox"/> ICS 206	<input checked="" type="checkbox"/> Weather Forecast	<input checked="" type="checkbox"/> Demob Plan	<input type="checkbox"/>
<input checked="" type="checkbox"/> ICS 208	<input checked="" type="checkbox"/> Fire Behavior	<input checked="" type="checkbox"/> Finance Message	<input checked="" type="checkbox"/> ICS 214

<b>7. Prepared By:</b> Gabe Garcia	<b>Position/Title:</b> PSC	<b>Signature:</b>
<b>8. Approved by Incident Commander:</b>	Jeff Veik	<b>Signature:</b>

## ORGANIZATION ASSIGNMENT LIST (ICS 203)

<b>1. Incident Name:</b> KINCADE		<b>2. Operational Period: Date From:</b> 10/30/2019		<b>Date To:</b> 10/31/2019	
		<b>Time From:</b> 0700		<b>Time To:</b> 0700	
<b>3. Incident Commander(s) and Command Staff:</b>			<b>7. Operation Section:</b>		
IC/UC's		J. Veik / S. Murphy / M. Heine /	Operations	J. Ohs / S. Lane (T)	
		J. Boaz / D. Franchesci / S. Andreis /	Deputy Operations	T. Ernst / R. Roberts (T)	
		T. Gossner	Night Ops	B. Farrell / T. Lubas (T)	
Deputy		R. Myers / M. Blankenheim / J. Janssen	Staging Area		
Safety Officer		J. Buchmeier / J. Segura	Branch	I	B. Lopez, S. Jerry
Information Officer		J. Cox / R. Brocchini	Division/Group	A	S. Pindell, P. Schoendienst (T)
Liaison Officer		G. Pemberton	Division/Group	B	S. Rohrs, C. Logan (T)
<b>4. Agency/Organization Representatives:</b>			Division/Group	D	C. Batey, J. Stocks (T)
Agency/Organization		Name	Branch	III	R. McLaughlin, J. Gahagan
BIA		G. Perry	Division/Group	F	J. Read / F. BURGER
BLM		J. Tunnell / Ryan Aeby	Division/Group	E	B. Giambrone, J. Sorensen (T)
CCC		A. Bayhon	Division/Group	Chalk Structure	J. Thomas, C. Dunn (T)
CDCR		J. Auzenne	Branch	V	D. Esades
Calpine		D. Jackson	Division/Group	H/L	M. Bathman, E. Sell (T)
Lake County Sheriff		B. Martin	Division/Group	M	S. Grendahl, M. Orme
OES F&R		D. Franklin	Division/Group	P	M. Houston
PG&E		D. Hotchkiss	Branch	Dry Creek	S. Andreis
Sonoma County EOC		C. Godley	Division/Group	G	P. Davis J. LOPEZ
USFS		S. Burns	Division/Group	I	J. Lopez P. DAVIS
			Branch	Occidental	
			Branch	Santa Rosa	S. Ward, C. Matthews (T)
			Branch	Sabastopol	
			Branch	River	
			Branch	Contingency	M. Brunton
<b>5. Planning Section:</b>			Division/Group	Callstoga Stru.	A. Ward
Chief		G. Garcia / A. Mitchell	Division/Group	Dozer Group	M. Turberville
Deputy		S. DeBenedet			
Resource Unit		J. Anderson / M. Selzer / C. Dyche			
Situation Unit		T. Gikas / C. Ingram	Division/Group	Fire Suppression	
Documentation Unit		B. Strohmayer	Staging Area	Healdsburg	A. Hubbs, J. Smith (T)
Demobilization Unit		T. Shevenell / E. Campbell	Staging Area	ICP	
GISS		T. Knecht			
FBAN		S. Volmer			
IMET		R. Walbrun			
Training Tech Spec		S. Vargas	<b>Air Operations Branch:</b>		<b>Director:</b> T. Swanson
			Air Support Group Supervisor		B. Kremensky
			Air Tactical Group Supervisor		N. Welch / M. Ryan
			Helibase Manager		K. Hill
<b>6. Logistics Section:</b>			<b>8. Finance/Administration Section:</b>		
Chief		S. Dohman / D. MARTIN	Chief	S. Hogan / J. Kitzka	
Supply Unit		P. Lee	Time Unit	S. Beck / J. Navarro	
Facilities Unit		B. Luiz / D. Zumkeller	Procurement Unit	J. Andrade	
Ground Support Unit		J. Luckenbach	Comp/Claims Unit	B. Stirton	
Communications Unit		J. Brooks / C. Johns	Cost Unit	J. Tapia	
Medical Unit		E. Castellanos			
Service Branch Director		D. Martin (T)			
<b>Prepared By: Name:</b> S. DeBenedet		<b>Position/Title:</b> PSC		<b>Signature:</b> <i>S. DeBenedet</i>	
<b>ICS 203</b>		<b>Date/Time:</b> 10/29/2019 2300 hours		<small>NIMS IAP</small>	



## Kincade Fire Weather Forecast



**FORECAST NO: 5**

**NAME OF FIRE: Kincade**

**PREDICTION FOR: Wednesday Day and Night**

**UNIT: CA-LNU-019376**

**SHIFT DATE: 10/30 0700-10/31 0700**

**SIGNED: Ryan Walbrun**

**TIME AND DATE**

**Incident Meteorologist**

**FORECAST ISSUED: 2100 on 10/29/19**

**...Red Flag Warning thru 4 pm Wednesday for shifting winds and low humidity...**

**WEATHER DISCUSSION:** Northeast winds early this morning will be switching southerly by midday and through the afternoon. In addition RH values remain incredibly dry with values in the single digits and teens. RH values may actually climb slightly this afternoon as southwest flow slowly develops. The changing wind will once again push the heavy smoke onto the eastern flanks of the fire along the Lake and Napa County lines. For tonight winds will be light in the valleys with some light Northeast winds in the hills. Overnight temperatures will be cold with lows in the upper 20s and 30s.

**WEATHER FORECAST WEDNESDAY:**

**WEATHER:** Morning smoke and haze. Otherwise mostly sunny.

**TEMPERATURES:** Highs mid 60s above 2000 feet and mid 70s below.

**HUMIDITY:** 5-15%, increasing 15-25% by late in the afternoon.

**20 FT WINDS:**

**RIDGETOP -** Northeast 5 to 15 mph early then turning Southwest 5-10 mph afternoon hours.

**SLOPE/VALLEY -** Light then southerly afternoon upslope winds 3-8 mph.

**STABILITY/INVERSION:** Moderate to strong morning inversion slowly lifting by midday.

**WEATHER FORECAST WEDNESDAY NIGHT:**

**WEATHER:** Smoky skies. Otherwise clear and cold.

**TEMPERATURES:** Overnight lows upper 20s coldest sheltered valleys to upper 30s midslopes.

**HUMIDITY:** Poor recovery continues with values 18-28% all night.

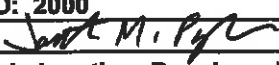
**20 FT WINDS:**

**RIDGETOP -** Evening southwest 4-8 mph turning Northeast after 2200 hours.

**SLOPE/VALLEY -** Light downslope winds 2-5 mph.

**Extended Forecast:** Dry and seasonable weather pattern Thursday through the weekend. Light diurnal winds trending southerly by day and light northeast at night. Better night time humidity recovery. No rain forecast through first week of November. Highs in the 70s with lows in the 30s.

# FIRE BEHAVIOR FORECAST

<b>FORECAST NUMBER:</b> 6	<b>TYPE OF FIRE:</b> Wildland
<b>FIRE NAME:</b> Kincade	<b>OPERATIONAL PERIOD:</b> 10/30-10/31, 0700-0700
<b>DATE ISSUED:</b> 10/29/2019	<b>TIME ISSUED:</b> 2000
<b>UNIT:</b> CA-LNU-019376	<b>SIGNED:</b> 
<b>Typed/printed:</b> Jonathan Pangburn FBAN (T)	

## INPUTS

**WEATHER SUMMARY:** RED FLAG WARNING FOR STRONG NE WINDS UNTIL 16:00

Temp (day): 65-75 max	Temp (night): 28-38 min
RH (day): 5-15% min	RH (night): 18-28% max
Wind (day): NE 5-15 mph, then SW 5-10 mph after 12:00	Wind (Night): SW 4-8, then NE after 22:00

## OUTPUTS

### FIRE BEHAVIOR

#### GENERAL:

The fire will have the potential to make fast down canyon runs when in alignment with drainages, and even faster rates of spread when running up hill. Ember cast into the extremely dry brush and light fuels will cause spot fires to ignite easily, and grow rapidly if left unchecked.

Live Fuel Moistures being recorded at the Geysers was 50% on 10/7/19, 10 points BELOW critical levels.

In the absence of weather conditions outside the forecast or extreme fire behavior conditions expect:

	Max. Flame Length	Max. Rate of Spread	Spotting	Probability of Ignition <sup>2</sup>
Grass	7-10 feet (2-3 m)	160-190 ft/min (3-3.5 km/hr)	.5 miles (0.8 km)	72%
Grass/Shrub Mix	7-10 feet (2-3 m)	160-190 ft/min (3-3.5 km/hr)	.5 miles (0.8 km)	72%
Shrub	7-10 feet (2-3 m)	25-35 ft/min (0.5-0.6 km/hr)	.5 miles (0.8 km)	72%
Timber Understory	10-15 feet (3-5 m)	25-35 ft/min (0.5-0.6 km/hr)	.5 miles (0.8 km)	72%

**\*\*minimum safety zone size for grass and brush fuels is 1/3 acre (0.1 Ha) for a Strike Team of Engines.**

**\*\*minimum safety zone size for timber fuels is 2/3 acre (0.25 Ha) for a Strike Team of Engines.**

**\*\*minimum safety zone size for WU/shrub fuels is 3 acres (1.2 Ha) for a Strike Team of Engines.**

#### SPECIFIC:

**Grass Fuels:** Fuels remain very receptive for ignitions, and will spread rapidly in the strong winds.

**Shrub Fuels:** Moisture levels are below critical and will enable fires to grow easily in any location.

**Timber Fuels:** Single and group tree torching may occur in DIV A, B, D, E, F, and P. Flame lengths will reach >15', and produce good ember cast down wind.

**Branch I:** Watch for torching, especially toward Cobb Mtn. and Mt. Saint Helena, along with high spotting potential. Wind shift will push head fire.

#### AIR OPERATIONS:

Visibility will be greatly reduced in the drainages until the inversions lift. Expect erratic wind conditions over all ridges.

Mixing height: 4,000 ft. AGL. Transport winds will push smoke out to the SW. Sunrise 0736, Sunset 1815.

## SAFETY

Escape routes: Be prepared to have multiple locations identified due to the possibility of debris blocking your route.

High winds will have the ability to break off branches and tops of healthy trees, and blow over those weakened by fire.

Weather getting hotter and drying.

Wind increases or changes direction.



# SAFETY MESSAGE

## Kincade Incident



1. Incident Name: Kincade

2. Operational Period: Date From: 10/30/19  
Time From: 07:00

Date To: 10/31/19  
Time To: 07:00

3. Safety Message/Expanded Safety Message, Safety Plan, Site Safety Plan:

**Hazardous Trees weakened by fire and wind are abundant in and around the incident.**

**Expect the unexpected.**

- Stay aware of what is happening around you and adapt your exit strategy accordingly.
- Stay informed of current and expected weather conditions. Plan accordingly.
- ESTABLISH: LOOKOUTS, COMMUNICATIONS, ESCAPE ROUTES AND SAFETY ZONES.
- Ensure radios are properly programmed for today's IAP and all crewmembers are familiar with incident communication plan.
- Beware of environmental hazards such as beehives, poison oak, trip hazards, steep slopes, and stump holes.
- Repopulation of certain evacuation areas are occurring. Expect residents, workers and the media to be present.
- Monitor yourself and crew for fatigue. Set a reasonable pace for your assignment.
- Watch for congested roadways and heavy traffic in and around the incident. Follow all traffic laws and the rules of the road.
- Resources working within the Geysers site brief your crew on the included Safety Message with specific items for the site.

**Avoid complacency by staying engaged and focused on the tasks assigned**

4. Site Safety Plan Required? Yes  No

5. Prepared by: Name: Buchmeier SOF1 / Segura SOF1(T)

ICS 208

Date/Time October 29, 2019 / 1900



# **GEYSERS**

# **SAFETY MESSAGE**

**This Safety Message applies to any resource assigned to the Geysers, in addition to the Kincade Incident Safety Message.**

- ⇒ The Geysers is a power distribution area, assume all power lines are energized.  
**DO NOT CUT ANY DOWN POWERLINES.**
- ⇒ Steep winding UNMARKED roads are throughout the Geysers. Drive defensively with headlights on anticipating the unexpected.
- ⇒ The Geysers area contain vertical and horizontal mines shafts, look down for vertical mines and stay away from horizontal mine openings.
- ⇒ Earthquakes are prevalent throughout the Geysers, LOOK OUT for rolling rocks and take earthquake precautions if earthquakes are felt.
- ⇒ Hydrogen Sulfide (H<sub>2</sub>S) in parts per million can be hazardous, if available utilize air monitoring equipment to detect for this hazard.
- ⇒ Natural steam vents exist in many areas. DO NOT mistake steam for smoke you may be BURNED.
- ⇒ Reclaimed hydrants are painted PURPLE do not drink water from the hydrant system in the Geysers.
- ⇒ Stay upwind of cooling towers, the steam may contain hazardous materials. Use DEFENSIVE tactics on cooling tower fires.

Joe Buchmeier SOF1 IMT 6

Lookouts

Communications

Escape Routes

Safety Zones



# Abandoned Mercury Mines

## Kincade Incident CA-LNU- 019376

- **There are abandoned mercury mines located in Branch I, Divisions B in map sections X,X,X At the end of Dry Creek Rd (Middletown, Lake County) 38° 44.386'N x 122° 41.208'W**
- **These areas are identified on the Operations Map with hashed-lined polygons keyed as a Life Safety Hazard.**
- **These areas are to be considered Life Safety Hazards for soil disturbance which may expose the underlying hazardous material.**
- **There are no Health or Inhalation Hazards if the identified areas are exposed to fire as the mines and material have been capped with soil.**
- **Restrict access around these areas for all personnel, vehicles and equipment.**
- **Avoid these areas for implementing control lines, staging areas or drop points.**


**IMT 6 Safety Officer**





# INCIDENT RISK ANALYSIS ICS 215A



BRANCH	HAZARDOUS ACTIONS/ CONDITIONS	MITIGATIONS/WARNINGS/REMEDIES
ALL	<b>FIRE AND DROUGHT WEAKENED TREES</b>	<ul style="list-style-type: none"> <li>Follow Hazard Tree Safety Guidelines (IRPG p. 22).</li> <li>Many of the trees within the fire area and along roadways are stressed due to fire activity and the wind event.</li> </ul>
ALL	<b>GEYSERS FACILITY</b>	<ul style="list-style-type: none"> <li>See specific safety message for the Geysers site.</li> <li>Use caution when working at the Geysers.</li> </ul>
ALL	<b>DRIVING HAZARDS</b>	<ul style="list-style-type: none"> <li><b>Watch your speeds. 5mph in base camp.</b></li> <li>Expect the unexpected.</li> <li>Maintain appropriate speed for the current road conditions.</li> </ul>
ALL	<b>CIVILIAN PRESENCE</b>	<ul style="list-style-type: none"> <li>Be aware of an increased in civilian presence around the fire area.</li> </ul>
ALL	<b>FIRING</b>	<ul style="list-style-type: none"> <li>Ensure adequate personnel and resources are available for the operation.</li> </ul>
ALL	<b>WEATHER</b>	<ul style="list-style-type: none"> <li>Watch for changing weather conditions.</li> </ul>
ALL	<b>PERSONNEL SAFETY</b>	<ul style="list-style-type: none"> <li>All personnel are responsible for their personal safety.</li> <li>Be sure to wear all required PPE while on the fire line.</li> <li>Maintain good personal hygiene.</li> </ul>
ALL	<b>POWER LINES</b>	<ul style="list-style-type: none"> <li>Follow Power Line safety guidelines (IRPG pg.24)</li> <li>Treat all downed power lines as energized.</li> </ul>
ALL	<b>HYDRATION</b>	<ul style="list-style-type: none"> <li>Drink water before, during and after each shift.</li> <li>Be alert for signs of heat stress in yourself and others.</li> </ul>
ALL	<b>FATIGUE</b>	<ul style="list-style-type: none"> <li>Monitor incoming and outgoing resources for level of fatigue.</li> <li>Provide sufficient rest during the work cycle.</li> </ul>
ALL	<b>WILDLAND URBAN INTERFACE</b>	<ul style="list-style-type: none"> <li>Review IRPG (pg. 12-16)</li> <li>Scout driveways prior to committing to them.</li> <li>Triage structures and placard as necessary.</li> </ul>
ALL	<b>COMMUNICATIONS</b>	<ul style="list-style-type: none"> <li>Check the communication plan for frequency assignments.</li> <li>Use human repeaters as needed.</li> <li>Get to high ground for better communications.</li> </ul>
ALL	<b>BRIEFINGS</b>	<ul style="list-style-type: none"> <li>Make sure <b>everyone</b> gets a briefing on the plan for the day.</li> <li>Document this on your ICS 214.</li> </ul>
ALL	<b>LCES</b>	<ul style="list-style-type: none"> <li>Ensure that LCES is being utilized.</li> </ul>
ALL	<b>AIRCRAFT AWARENESS</b>	<ul style="list-style-type: none"> <li>Be aware of rotor wash when working near helicopters.</li> <li>Understand that hazard trees may react to helicopters overhead.</li> <li>Monitor assigned aircraft frequencies.</li> </ul>
ALL	<b>MINE SHAFT / ARCH SITES</b>	<ul style="list-style-type: none"> <li>Be aware of possible mine shafts in the area.</li> <li>Flag area and notify supervisor if found.</li> <li>Possible hazardous materials in and around shafts.</li> </ul>
ALL	<b>REBURN POTENTIAL</b>	<ul style="list-style-type: none"> <li>Recognize the environment that you are working in.</li> <li>Evaluate the potential for reburn in your work area.</li> </ul>
<b>Incident Name: Kincade</b>		Date Prepared: 10/29/2019 Prepared by: Joe Buchmeier SOFL 
		Operational Period: 10/30/2019 – 10/31/2019 0700-0700

# ASSIGNMENT LIST (ICS 204 WF)

CONTROLLED UNCLASSIFIED  
INFORMATION/BASIC

<b>1. Incident Name:</b> <b>KINCADE</b>	<b>2. Operational Period:</b> Date From: 10/30/19    Date To: 10/31/19 Time From: 0700    Time To: 0700	<b>3. Branch</b> <b>Division</b>  <b>I</b> <b>A</b>
--	---	---

<b>4. Operations Personnel:</b> Operations Section Chief: <b>J. Ohs / S. Lane (T)</b> Branch Director: <b>B. Lopez, S. Jerry</b> Division/Group Supervisor: <b>S. Pindell, P. Schoendienst (T)</b>		Night Ops: <b>B. Farrell / T. Lubas (T)</b> Branch Safety: Air Attack: <b>N. Welch / M. Ryan</b>
---	--	--

<b>5. Resources Assigned:</b>		** Resources Below in Bold are 12 Hour **					
Resource Identifier	ALS	LWD	Leader	Personnel	Request #	Hours	Reporting Location
STC SHU 9241C			D. Watt	17	E-59	0700-0700	ICP
STC XHU 2075C			R. Wakefield	17	E-224	0700-0700	ICP
STC XSJ 4179C			C. Jelinek	18	E-230	0700-0700	ICP
T/F XMN 6175			R. Nalder	17	E-228	0700-0700	ICP
T/F KINCADE 101			M. Mcmillan	17	<b>E-9017</b>	0700-1900	ICP
T/F KINCADE 102			C. Stevens	16	<b>E-9021</b>	0700-1900	ICP
T/F KINCADE 107			D. Shiers	18	<b>E-9026</b>	0700-1900	ICP
STG LNU 9140G → DEV B			J. Galvin	33	C-76	0700-0700	ICP
CRW NNS JEAN			S. Benner	26	C-61	0700-0700	ICP
CRWT2 C-51			D. Duffy	20	<b>C-51</b>	0700-1900	ICP
CRWT2 C-53			R. Nettleship	20	<b>C-53</b>	0700-1900	ICP
CRWT2 C-88			H. Hernandez	20	<b>C-88</b>	0700-1900	ICP
CRWT2 C-90			A. Franco	20	<b>C-90</b>	0700-1900	ICP
DOZ TGU 2544 → DEV F			M. Glenn	2	E-8	0700-0700	ICP
DOZ PVT E-16 → DEV B			S. Garner	2	E-16	0700-0700	ICP
<b>DOZ PVT E-189</b> → STAGE			R. Holtz	2	<b>E-189</b>	0700-0700	ICP
DOZ PVT E-190			N. Holt	2	E-190	0700-0700	ICP
DOZ PVT E-192			S. Christianson	2	E-192	0700-0700	ICP

**6. Work Assignments:**  
Construct and hold line utilizing direct tactics and cold trail fingers & Islands where necessary to prevent fire spread.  
Improve direct fire line. Mop up 100' in from control line.

**7. Special Instructions:**  
All NIFC Command channels are linked to operate as one. The Command channel noted in the 204 is a recommendation and users may need to utilize one of the other NIFC Command channels based off of geographical location.  
Abandoned mercury mine located at the west end of Dry Creek Rd. in DIV B. Do not disturb soil in this area.

**8. Communications**

Name	Ch	Function	Rx Freq	Rx Tone	Tx Freq	Tx Tone	Notes
NIFC C10	4	COMMAND	170.4125		165.9625	131.8 (T3)	MT. ST. HELENA LINKED W/ALL NIFC'S
CDF T30	10	TACTICAL	151.3925	192.8 (T16)	151.3925	192.8 (T16)	BRANCH I
CDF T24	14	AIR TO GROUND	151.3325	192.8 (T16)	151.3325	192.8 (T16)	AIR TO GROUND
CALCORD	15	MEDICAL	156.0750	156.7 (T6)	156.0750	156.7 (T6)	EMERGENCY COORDINATIO
GUARD29	16	EMERGENCY	168.6250	CSQ	168.6250	110.9 (T1)	EMERGENCY USE ONLY

**9. Prepared by: Name:** J. Anderson / M. Selzer / C. Dyche    RESL

Signature:

ICS 204    Date/Time: 10/29/2019 2200    Personnel Count: 269

# ASSIGNMENT LIST (ICS 204 WF)

CONTROLLED UNCLASSIFIED  
INFORMATION//BASIC

<b>1. Incident Name:</b> <b>KINCADE</b>	<b>2. Operational Period:</b> Date From: 10/30/19    Date To: 10/31/19 Time From: 0700    Time To: 0700	<b>3. Branch</b> <b>Division</b> <b>I</b> <b>A</b>
--	---	---


<b>4. Operations Personnel:</b>		<b>Page 2 of 2</b> <b>Alpha</b>
Operations Section Chief: <b>J. Ohs / S. Lane (T)</b>	Night Ops: <b>B. Farrell / T. Lubas (T)</b>	
Branch Director: <b>B. Lopez, S. Jerry</b>	Branch Safety:	
Division/Group Supervisor: <b>S. Pindell, P. Schoendienst (T)</b>	Air Attack: <b>N. Welch / M. Ryan</b>	

<b>5. Resources Assigned:</b>		<b>** Resources Below in Bold are 12 Hour **</b>					
Resource Identifier	ALS	LWD	Leader	Personnel	Request #	Hours	Reporting Location
<b>DOZ PVT E-193</b> <i>IN BOLD</i>			<b>EDWARDS</b>		<b>E-193</b>	<b>0700-1900</b> <i>0700</i>	<b>ICP</b>
DOZ PVT E-195			M. Morrison	2	E-195	0700-0700	ICP
DOZ PVT E-287			W. Johnson	2	E-287	0700-0700	ICP
WT PVT E-186			J. Corley	2	E-186	0700-0700	ICP
WT PVT E-498			J. Miller	2	E-498	0700-0700	ICP
WT PVT E-501			M. Duree	2	E-501	0700-0700	ICP
<b>WT PVT E-569</b>			<b>J. Mcallister</b>	2	<b>E-569</b>	<b>0700-1900</b>	<b>ICP</b>
WT							ICP
WT							ICP
HEQB BIBBY			J. Bibby	1	O-617	0700-0700	ICP
<del>HEQB JONES (T)</del> <i>24 ODD OFF</i>			J. Jones	1	O-355	0700-0700	ICP
EMPF HAMILTON			S. Hamilton	1	O-535	0700-0700	ICP
EMPF WINSLOW			J. Winslow	1	O-534	0700-0700	ICP

**6. Work Assignments:**  
Construct and hold line utilizing direct tactics and cold trail fingers & islands where necessary to prevent fire spread.  
Improve direct fire line. Mop up 100' in from control line.

**7. Special Instructions:**  
All NIFC Command channels are linked to operate as one. The Command channel noted in the 204 is a recommendation and users may need to utilize one of the other NIFC Command channels based off of geographical location.  
Abandoned mercury mine located at the west end of Dry Creek Rd. in DIV B. Do not disturb soil in this area.

<b>8. Communications</b>							
Name	Ch	Function	Rx Freq	Rx Tone	Tx Freq	Tx Tone	Notes
NIFC C10	4	COMMAND	170.4125		165.9625	131.8 (T3)	MT. ST. HELENA LINKED WALL NIFC'S
CDF T30	10	TACTICAL	151.3925	192.8 (T16)	151.3925	192.8 (T16)	BRANCH I
CDF T24	14	AIR TO GROUND	151.3325	192.8 (T16)	151.3325	192.8 (T16)	AIR TO GROUND
CALCORD	15	MEDICAL	156.0750	156.7 (T6)	156.0750	156.7 (T6)	EMERGENCY COORDINATIO
GUARD29	16	EMERGENCY	168.6250	CSQ	168.6250	110.9 (T1)	EMERGENCY USE ONLY

**9. Prepared by: Name:** J. Anderson / M. Selzer / C. Dyche    RESL  
Signature: 

ICS 204    Date/Time: 10/29/2019 2200    Personnel Count: 16

# ASSIGNMENT LIST (ICS 204 WF)

CONTROLLED UNCLASSIFIED  
INFORMATION//BASIC

<b>1. Incident Name:</b> <b>KINCADE</b>	<b>2. Operational Period:</b> Date From: 10/30/19    Date To: 10/31/19 Time From: 0700    Time To: 0700	<b>3. Branch</b> <b>Division</b> <b>I</b> <b>B</b> <b>Page 1 of 2</b> <b>Bravo</b>
--	---	--

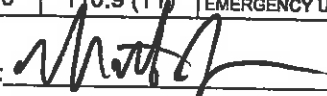
<b>4. Operations Personnel:</b>	
Operations Section Chief: <b>J. Ohs / S. Lane (T)</b>	Night Ops: <b>B. Farrell / T. Lubas (T)</b>
Branch Director: <b>B. Lopez, S. Jerry</b>	Branch Safety:
Division/Group Supervisor: <b>S. Rohrs, C. Logan (T)</b>	Air Attack: <b>N. Welch / M. Ryan</b>

<b>5. Resources Assigned:</b>		<b>** Resources Below in Bold are 12 Hour **</b>					
Resource Identifier	ALS	LWD	Leader	Personnel	Request #	Hours	Reporting Location
STC XTB 4229C	<b>X</b>		S. Pevenage	22	E-234	0700-0700	ICP
T/F KINCADE 103			<b>J. Sarbia</b>	18	<b>E-9022</b>	<b>0700-1900</b>	<b>ICP</b>
T/F KINCADE 104			<b>T. Erwin</b>	21	<b>E-9023</b>	<b>0700-1900</b>	<b>ICP</b>
T/F KINCADE 105			<b>A. Silva</b>	17	<b>E-9024</b>	<b>0700-1900</b>	<b>ICP</b>
STL LMU 9222L			G. Lane	5	E-23	0700-0700	ICP
<del>STL TGU 9250L</del>			G. Trull	5	E-21	0700-0700	ICP
DOZ MEU 1145			M. Wilson	3	E-9	0700-0700	ICP
<del>DOZ LNU 1443</del>			G. Reynolds	0	E-6	0700-0700	ICP
DOZ LNU 1447			B. Madole	3	E-7	0700-0700	ICP
DOZ LNU 1448			<b>J. Madocks</b>	3	E-10	0700-0700	ICP
DOZ PVT E-26			K. Drew	4	E-26	0700-0700	ICP
DOZ PVT E-27			D. Boggs	2	E-27	0700-0700	ICP
DOZ PVT E-28			D. Smith	2	E-28	0700-0700	ICP
DOZ PVT E-191			J. Coleman	2	E-191	0700-0700	ICP
DOZ PVT E-197			B. Noble	2	E-197	0700-0700	ICP
DOZ PVT E-289			A. Biggs	2	E-289	0700-0700	ICP
DOZ PVT E-291			J. Key	2	E-291	0700-0700	ICP
DOZ PVT E-294			T. Stubbs	2	E-294	0700-0700	ICP

**6. Work Assignments:**  
Construct and hold line utilizing direct tactics and cold trail fingers & islands where necessary to prevent fire spread.  
Improve direct fire line. Mop up 100' in from control line.

**7. Special Instructions:**  
All NIFC Command channels are linked to operate as one. The Command channel noted in the 204 is a recommendation and users may need to utilize one of the other NIFC Command channels based off of geographical location.  
Abandoned mercury mine located at the west end of Dry Creek Rd. in DIV B. Do not disturb soil in this area.

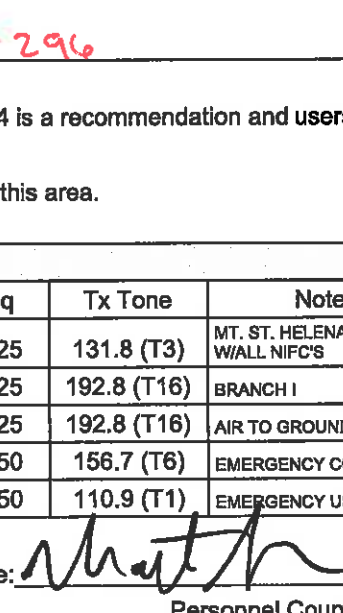
<b>8. Communications</b>							
Name	Ch	Function	Rx Freq	Rx Tone	Tx Freq	Tx Tone	Notes
NIFC C10	4	COMMAND	170.4125		165.9625	131.8 (T3)	MT. ST. HELENA LINKED W/ALL NIFC'S
CDF T31	11	TACTICAL	159.3825	192.8 (T16)	159.3825	192.8 (T16)	BRANCH I
CDF T24	14	AIR TO GROUND	151.3325	192.8 (T16)	151.3325	192.8 (T16)	AIR TO GROUND
CALCORD	15	MEDICAL	156.0750	156.7 (T6)	156.0750	156.7 (T6)	EMERGENCY COORDINATIO
GUARD29	16	EMERGENCY	168.6250	CSQ	168.6250	110.9 (T1)	EMERGENCY USE ONLY

**9. Prepared by: Name:** J. Anderson / M. Selzer / C. Dyche    RESL    Signature: 

**ICS 204**    Date/Time: 10/29/2019 2200    Personnel Count: 115

# ASSIGNMENT LIST (ICS 204 WF)

CONTROLLED UNCLASSIFIED  
INFORMATION//BASIC

<b>1. Incident Name:</b> <b>KINCADE</b>		<b>2. Operational Period:</b> Date From: 10/30/19    Date To: 10/31/19 Time From: 0700    Time To: 0700				<b>3. Branch</b> <b>I</b>		<b>Division</b> <b>B</b>	
						Page 2 of 2		Bravo	
<b>4. Operations Personnel:</b>									
Operations Section Chief: <b>J. Ohs / S. Lane (T)</b>					Night Ops: <b>B. Farrell / T. Lubas (T)</b>				
Branch Director: <b>B. Lopez, S. Jerry</b>					Branch Safety:				
Division/Group Supervisor: <b>S. Rohrs, C. Logan (T)</b>					Air Attack: <b>N. Welch / M. Ryan</b>				
<b>** Resources Below in Bold are 12 Hour **</b>									
<b>5. Resources Assigned:</b>		ALS	LWD	Leader	Personnel	Request #	Hours	Reporting Location	
DOZ PVT E-297				A. Daniels	3	E-297	0700-0700	ICP	
WT PVT E-502				J. Douglas	2	E-502	0700-0700	ICP	
W/T <b>PVT E-53</b>						<b>E-53</b>		ICP	
FALM O-479					3	<b>O-479</b>	0700-1900	ICP	
FALM O-717				R. Deniz	1	<b>O-717</b>	0700-1900	ICP	
FALM O-723					1	<b>O-723</b>	0700-1900	ICP	
FALB WASHBURN				Washburn	1	<b>O-333</b>	0700-1900	ICP	
<b>HEQB PETERSEN</b> → <b>DIV B</b>				<del>R. Petersen</del>	<del>1</del>	<b>O-314</b>	0700-0700	ICP	
HEQB NELSON				C. Nelson	1	O-8	0700-0700	ICP	
HEQB WESTON				M. Weston	1	O-609	0700-0700	ICP	
HEQB HOLLIDAY				T. Holliday	1	O-644	0700-0700	ICP	
HEQB BRINKERHOFF				P. Brinkerhoff	1	O-673	0700-0700	ICP	
HEQB DUBIANSKY (T)				C. Dubiansky	1	O-224	0700-0700	ICP	
EMPF OSBOURNE				T. Osbourne	1	O-542	0700-0700	ICP	
EMPF DRAKE				S. Drake	1	O-541	0700-0700	ICP	
<del>CRW</del>									
<b>CRW IHC WARM SPRINGS</b> <b>Fm DIV B</b>				<b>R. Rodriguez</b>	<b>20</b>	<b>C-63</b>	<b>0700-1900</b>		
<b>STC MRN 9150 C</b> <b>Fm DIV G</b>				<b>M. Brown</b>	<b>10</b>	<b>E-62</b>	<b>0700-0700</b>		
<b>6. Work Assignments:</b>									
Construct and hold line utilizing direct tactics and cold trail fingers & islands where necessary to prevent fire spread.									
Improve direct fire line. Mop up 100' in from control line.									
<b>91406    9230C</b>									
<b>DOZ PVT E-16    DOZ E-284    DOZ E-296</b>									
<b>7. Special Instructions:</b>									
All NIFC Command channels are linked to operate as one. The Command channel noted in the 204 is a recommendation and users may need to utilize one of the other NIFC Command channels based off of geographical location.									
Abandoned mercury mine located at the west end of Dry Creek Rd. in DIV B. Do not disturb soil in this area.									
<b>8. Communications</b>									
Name	Ch	Function	Rx Freq	Rx Tone	Tx Freq	Tx Tone	Notes		
NIFC C10	4	COMMAND	170.4125		165.9625	131.8 (T3)	MT. ST. HELENA LINKED WALL NIFC'S		
CDF T31	11	TACTICAL	159.3825	192.8 (T16)	159.3825	192.8 (T16)	BRANCH I		
CDF T24	14	AIR TO GROUND	151.3325	192.8 (T16)	151.3325	192.8 (T16)	AIR TO GROUND		
CALCORD	15	MEDICAL	156.0750	156.7 (T6)	156.0750	156.7 (T6)	EMERGENCY COORDINATIO		
GUARD29	16	EMERGENCY	168.6250	CSQ	168.6250	110.9 (T1)	EMERGENCY USE ONLY		
<b>9. Prepared by: Name:</b> J. Anderson / M. Selzer / C. Dyche    RESL									
						Signature: 			
<b>ICS 204</b>		Date/Time: 10/29/2019 2200				Personnel Count: 19			

# ASSIGNMENT LIST (ICS 204 WF)

CONTROLLED UNCLASSIFIED  
INFORMATION/BASIC

<b>1. Incident Name:</b> <b>KINCADE</b>	<b>2. Operational Period:</b> Date From: 10/30/19    Date To: 10/31/19 Time From: 0700    Time To: 0700	<b>3. Branch</b> <b>Division</b>  <b>I</b> <b>D</b>
--	---	---

Page 1 of 2    Delta

<b>4. Operations Personnel:</b>	
Operations Section Chief: <b>J. Ohs / S. Lane (T)</b>	Night Ops: <b>B. Farrell / T. Lubas (T)</b>
Branch Director: <b>B. Lopez, S. Jerry</b>	Branch Safety:
Division/Group Supervisor: <b>C. Batey, J. Stocks (T)</b>	Air Attack: <b>N. Welch / M. Ryan</b>

<b>5. Resources Assigned:</b>		** Resources Below In Bold are 12 Hour **					
Resource Identifier	ALS	LWD	Leader	Personnel	Request #	Hours	Reporting Location
STC XSA 4152C	X		J. Edmiston	21	E-231	0700-0700	ICP
STC XNE <del>4104C</del> <b>24 HRS</b>			J. Bierwagen	18	E-233	0700-0700	ICP
T/F XMY 2175			J. Lundgren	20	E-106	0700-0700	ICP
T/F XTE 3800			M. Jonsson	16	E-240	0700-0700	ICP
STG TGU 9252G			M. Brown	33	C-11	0700-0700	ICP
STG AEU 9273G			P. Moffett	34	C-9	0700-0700	ICP
STG							ICP
STG							ICP
<del>CRW IHG TAHOE</del> <b>24 HRS</b>			D. Guerrero	19	C-71	0700-1900	ICP
<del>CRW IHG TALLAC</del> <b>10/29/19</b>			K. Betty	21	C-72	0700-1900	ICP
CRW T2 C-29			P. Hernandez	20	C-29	0700-1900	ICP
CRW T2 C-30			J. Delfin	20	C-30	0700-1900	ICP
CRW T2 C-39			L. Vera	20	C-39	0700-1900	ICP
CRWT2 C-42			A. Mendez	20	C-42	0700-1900	ICP
CRW T2 IA C-85			M. Varela	20	C-85	0700-1900	ICP
CRW T2 C-86			A. Lighty	20	C-86	0700-1900	ICP
STL SCU 9160L			T. Chenoweth	5	E-25	0700-0700	ICP
STL NEU 9237L			A. Gregersen	8	E-24	0700-0700	ICP

**6. Work Assignments:**  
Construct and hold line utilizing direct tactics and cold trail fingers & Islands where necessary to prevent fire spread.  
Improve direct fire line. Mop up 100' in from control line.

**7. Special Instructions:**  
All NIFC Command channels are linked to operate as one. The Command channel noted in the 204 is a recommendation and users may need to utilize one of the other NIFC Command channels based off of geographical location.  
Abandoned mercury mine located at the west end of Dry Creek Rd. in DIV B. Do not disturb soil in this area.

**8. Communications**

Name	Ch	Function	Rx Freq	Rx Tone	Tx Freq	Tx Tone	Notes
NIFC C10	4	COMMAND	170.4125		165.9625	131.8 (T3)	MT. ST. HELENA LINKED W/ALL NIFC'S
CDF T32	12	TACTICAL	151.2425	192.8 (T16)	151.2425	192.8 (T16)	BRANCH I
CDF T24	14	AIR TO GROUND	151.3325	192.8 (T16)	151.3325	192.8 (T16)	AIR TO GROUND
CALCORD	15	MEDICAL	156.0750	156.7 (T6)	156.0750	156.7 (T6)	EMERGENCY COORDINATIO
GUARD29	16	EMERGENCY	168.6250	CSQ	168.6250	110.9 (T1)	EMERGENCY USE ONLY

**9. Prepared by: Name:** J. Anderson / M. Selzer / C. Dyche    RESL

Signature:

**ICS 204**    Date/Time: 10/29/2019 2200    Personnel Count: 315

NIMS IAP

CONTROLLED UNCLASSIFIED INFORMATION/BASIC

# ASSIGNMENT LIST (ICS 204 WF)

CONTROLLED UNCLASSIFIED  
INFORMATION//BASIC

<b>1. Incident Name:</b> <b>KINCADE</b>	<b>2. Operational Period:</b> Date From: 10/30/19    Date To: 10/31/19 Time From: 0700    Time To: 0700	<b>3. Branch</b> <b>Division</b> <b>I</b> <b>D</b>
--	---	---


<b>4. Operations Personnel:</b>		<b>Page 2 of 2</b>	<b>Delta</b>
Operations Section Chief: <b>J. Ohs / S. Lane (T)</b>	Night Ops: <b>B. Farrell / T. Lubas (T)</b>		
Branch Director: <b>B. Lopez, S. Jerry</b>	Branch Safety:		
Division/Group Supervisor: <b>C. Batey, J. Stocks (T)</b>	Air Attack: <b>N. Welch / M. Ryan</b>		

5. Resources Assigned:	** Resources Below in Bold are 12 Hour **						
Resource Identifier	ALS	LWD	Leader	Personnel	Request #	Hours	Reporting Location
DOZ MRN 1540			J. Demoss	4	E-255	0700-0700	ICP
DOZ PVT E-17			J. Ford	2	E-17	0700-0700	ICP
DOZ PVT E-19			J. Ponte	2	E-19	0700-0700	ICP
DOZ PVT E-20			J. Slaight	0	E-20	0700-0700	ICP
DOZ PVT E-30			J. Dillsaver	2	E-30	0700-0700	ICP
DOZ PVT E-288			A. Fukuda	2	E-288	0700-0700	ICP
WT PVT E-54			J. Montelli	1	E-54	0700-0700	ICP
WT PVT E-185			J. Hughes	2	E-185	0700-0700	ICP
WT PVT E-497			K. Pierce	2	E-497	0700-0700	ICP
W/T							ICP
<b>FALM O-716</b>				3	<b>O-716</b>	<b>0700-1900</b>	<b>ICP</b>
<b>FALM O-721</b>				2	<b>O-721</b>	<b>0700-1900</b>	<b>ICP</b>
<b>FALM O-724</b>				2	<b>O-724</b>	<b>0700-1900</b>	<b>ICP</b>
HEQB JOHNSON			G. Johnson	1	O-610	0700-0700	ICP
HEQB COLEMAN (T)			A. Coleman	1	O-672	0700-0700	ICP
FEMP KNABE			T. Knabe	1	O-699	0700-0700	ICP
FEMP WHYTE			C. Whyte	1	O-701	0700-0700	ICP
<b>HERB PETERSEN</b>			<b>L. Petersen</b>	<b>1</b>	<b>O-4</b>	<b>0700-0700</b>	

**6. Work Assignments:**  
Construct and hold line utilizing direct tactics and cold trail fingers & islands where necessary to prevent fire spread.  
Improve direct fire line. Mop up 100' in from control line.

**7. Special Instructions:**  
All NIFC Command channels are linked to operate as one. The Command channel noted in the 204 is a recommendation and users may need to utilize one of the other NIFC Command channels based off of geographical location.  
Abandoned mercury mine located at the west end of Dry Creek Rd. in DIV B. Do not disturb soil in this area.

8. Communications							
Name	Ch	Function	Rx Freq	Rx Tone	Tx Freq	Tx Tone	Notes
NIFC C10	4	COMMAND	170.4125		165.9625	131.8 (T3)	MT. ST. HELENA LINKED WALL NIFC'S
CDF T32	12	TACTICAL	151.2425	192.8 (T16)	151.2425	192.8 (T16)	BRANCH I
CDF T24	14	AIR TO GROUND	151.3325	192.8 (T16)	151.3325	192.8 (T16)	AIR TO GROUND
CALCORD	15	MEDICAL	156.0750	156.7 (T6)	156.0750	156.7 (T6)	EMERGENCY COORDINATIO
GUARD29	16	EMERGENCY	168.6250	CSQ	168.6250	110.9 (T1)	EMERGENCY USE ONLY

**9. Prepared by: Name:** J. Anderson / M. Selzer / C. Dyche    RESL  
Signature: 

**ICS 204**    Date/Time: 10/29/2019 2200    Personnel Count: 28



# ASSIGNMENT LIST (ICS 204 WF)

CONTROLLED UNCLASSIFIED  
INFORMATION/BASIC

<b>1. Incident Name:</b> <b>KINCADE</b>	<b>2. Operational Period:</b> Date From: 10/30/19    Date To: 10/31/19 Time From: 0700    Time To: 0700	<b>3. Branch</b> <b>Division</b> <b>III</b> <b>F</b>  Page 1 of 2 <b>Foxtrot</b>
--	---	---

<b>4. Operations Personnel:</b> Operations Section Chief: <b>J. Ohs / S. Lane (T)</b> Branch Director: <b>R. McLaughlin, J. Gahagan</b> Division/Group Supervisor: <b>J. Read</b>		Night Ops: <b>B. Farrell / T. Lubas (T)</b> Branch Safety: Air Attack: <b>N. Welch / M. Ryan</b>
--	--	--

5. Resources Assigned:		** Resources Below in Bold are 12 Hour **					
Resource Identifier	ALS	LWD	Leader	Personnel	Request #	Hours	Reporting Location
STA XLE 1281A			M. Brookhyser	22	E-419	0700-0700	ICP
STA XSC 2305A	X		B. Sterling	22	E-414	0700-0700	ICP
STA XSD 6411A	X		D. Pender	21	E-332	0700-0700	ICP
STA OES 5810A	X		J. Franklin	22	E-330	0700-0700	ICP
STC OES 4803C			D. Baldwin	22	E-239	0700-0700	ICP
STF OES ORG 12			T. Jackson	17	E-534	0700-0700	ICP
STF OES ORG 15			M. Cross	16	E-535	0700-0700	ICP
T/F KINCADE 111			J. Hasslinger	16	E-9032	0700-0700	ICP
T/F SXN 2385			M. Elson	31	E-103	0700-0700	ICP
STG LMU 9220G			B. Luetke	33	C-3	0700-0700	ICP
<b>STG</b>							<b>ICP</b>
CRWT2 C-31			T. Hiner	20	C-31	0700-1900	ICP
CRWT2 C-33			F. Franco	20	C-33	0700-1900	ICP
CRWT2 C-43			G. Seal	20	C-43	0700-1900	ICP
CRW T2 C-47			J. Alvarez	20	C-47	0700-1900	ICP
CRW T2 C-68			B. Billie	22	C-68	0700-0900	ICP
CRW T2 C-70			T. Patten	20	C-70	0700-1900	ICP
CRW T2 C-91			J. Mendoza	20	C-91	0700-1900	ICP

**6. Work Assignments:**  
Construct and hold line utilizing direct tactics and cold trail fingers & islands where necessary to prevent fire spread.  
Improve direct fire line. Mop up 100' in from control line.

**7. Special Instructions:**  
All NIFC Command channels are linked to operate as one. The Command channel noted in the 204 is a recommendation and users may need to utilize one of the other NIFC Command channels based off of geographical location.

8. Communications							
Name	Ch	Function	Rx Freq	Rx Tone	Tx Freq	Tx Tone	Notes
NIFC C8	3	COMMAND	169.5375		164.7125	131.8 (T3)	MT. JACKSON LINKED W/NIFC'S
CDF T26	12	TACTICAL	159.2925	192.8 (T16)	159.2925	192.8 (T16)	BRANCH III
CDF T24	14	AIR TO GROUND	151.3325	192.8 (T16)	151.3325	192.8 (T16)	AIR TO GROUND
CALCORD	15	MEDICAL	156.0750	156.7 (T6)	156.0750	156.7 (T6)	EMERGENCY COORDINATIO
GUARD29	16	EMERGENCY	168.6250	CSQ	168.6250	110.9 (T1)	EMERGENCY USE ONLY

<b>9. Prepared by: Name:</b>	J. Anderson / M. Seizer / C. Dyché    RESL	Signature:	
ICS 204	Date/Time: 10/29/2019 2200	Personnel Count: 364	

# ASSIGNMENT LIST (ICS 204 WF)

CONTROLLED UNCLASSIFIED  
INFORMATION/BASIC

<b>1. Incident Name:</b> <b>KINCADE</b>	<b>2. Operational Period:</b> Date From: 10/30/19    Date To: 10/31/19 Time From: 0700    Time To: 0700	<b>3. Branch</b> <b>Division</b> <b>III</b> <b>F</b>
--	---	---

<b>4. Operations Personnel:</b>		<b>Page 2 of 2</b> <b>Foxtrot</b>
Operations Section Chief: <b>J. Ohs / S. Lane (T)</b>	Night Ops: <b>B. Farrell / T. Lubas (T)</b>	
Branch Director: <b>R. McLaughlin, J. Gahagan</b>	Branch Safety: ;	
Division/Group Supervisor: <b>J. Read</b>	Air Attack: <b>N. Welch / M. Ryan</b>	

Resource Identifier	ALS	LWD	Leader	Personnel	Request #	Hours	Reporting Location
WT PVT E-181			S. Freshour	2	E-181	0700-0700	ICP
WT PVT E-503			E. Korbly	2	E-503	0700-0700	ICP
WT							ICP
WT							ICP
TFLD COLE			C. Cole	1	O-509	0700-1900	ICP
FALM O-720				2	O-720	0700-1900	ICP
HEQB GARCIA			R. Garcia	1	O-618	0700-0700	ICP
EMPF SITAR			J. SITAR	1	O-544	0700-0700	ICP
EMPF FOWLER (T)			J. Fowler	1	O-546	0700-0700	ICP
CRW PVT C-41			J. MENDOZA	20	C-41	0700-1900	
CRW PVT C-45			J. Parrass III	20	C-45	0700-1900	
TGU Do2 E-8				2	E-8	0700-0900	
<del>Do2</del>							

**6. Work Assignments:**  
Construct and hold line utilizing direct tactics and cold trail fingers & islands where necessary to prevent fire spread.  
Improve direct fire line. Mop up 100' in from control line.

**7. Special Instructions:**  
All NIFC Command channels are linked to operate as one. The Command channel noted in the 204 is a recommendation and users may need to utilize one of the other NIFC Command channels based off of geographical location.

**8. Communications**

Name	Ch	Function	Rx Freq	Rx Tone	Tx Freq	Tx Tone	Notes
NIFC C8	3	COMMAND	169.5375		164.7125	131.8 (T3)	MT. JACKSON LINKED W/NIFC'S
CDF T26	12	TACTICAL	159.2925	192.8 (T16)	159.2925	192.8 (T16)	BRANCH III
CDF T24	14	AIR TO GROUND	151.3325	192.8 (T16)	151.3325	192.8 (T16)	AIR TO GROUND
CALCORD	15	MEDICAL	156.0750	156.7 (T6)	156.0750	156.7 (T6)	EMERGENCY COORDINATIO
GUARD29	16	EMERGENCY	168.6250	CSQ	168.6250	110.9 (T1)	EMERGENCY USE ONLY

**9. Prepared by: Name:** J. Anderson / M. Selzer / C. Dyche    RESL

Signature:

**ICS 204**    Date/Time: 10/29/2019 2200    Personnel Count: 10





# ASSIGNMENT LIST (ICS 204 WF)

CONTROLLED UNCLASSIFIED  
INFORMATION/BASIC

<b>1. Incident Name:</b> <b>KINCADE</b>	<b>2. Operational Period:</b> Date From: 10/30/19    Date To: 10/31/19 Time From: 0700    Time To: 0700	<b>3. Branch</b> <b>Division</b> <b>III</b> <b>Chalk Structure</b>
<b>4. Operations Personnel:</b>		Page 1 of 1

Operations Section Chief: <b>J. Ohs / S. Lane (T)</b>	Night Ops: <b>B. Farrell / T. Lubas (T)</b>
Branch Director: <b>R. McLaughlin, J. Gahagan</b>	Branch Safety:
Division/Group Supervisor: <b>J. Thomas, C. Dunn (T)</b>	Air Attack: <b>N. Welch / M. Ryan</b>

5. Resources Assigned:		** Resources Below in Bold are 12 Hour **					
Resource Identifier	ALS	LWD	Leader	Personnel	Request #	Hours	Reporting Location
STA VNC 1580A			J. Dullam	22	E-415	0700-0700	ICP
STA XLC 1201A			B. Richey	22	E-323	0700-0700	ICP
STA XLC 1205A	X		A. Bagan	22	E-327	0700-0700	ICP
STA XSM 2276A			J. Thorne	22	E-425	0700-0700	ICP
STA OES 4806A			B. Becker	20	E-326	0700-0700	ICP
STC XOR 1421C			C. Richichi	23	E-226	0700-0700	ICP
STF OES WA 3			R. Adams	17	E-573	0700-1900	ICP
STF OES WA 4			T. Stark	19	E-574	0700-1900	ICP
T/F KINCADE 100			R. Willis	18	E-9012	0700-1900	ICP
CRW T2 C-26			T. Burrieta	20	C-26	0700-1900	ICP
CRW T2 C-67			S. Garcia	20	C-67	0700-1900	ICP
CRW T2 C-74			E. Moreno	20	C-74	0700-1900	ICP
CRW T2 C-87			R. Katon	20	C-87	0700-1900	ICP
W/T PVT E-52			J. Lear	2	E-52	0700-0700	ICP
WT PVT E-178			T. Oferall	2	E-178	0700-0700	ICP
WT PVT E-180			M. Graves	2	E-180	0700-0700	ICP
TFLD							ICP
STC & 4021c					E-249	0700-0700	

**6. Work Assignments:**  
 Structure Triage  
 Perimeter Control if Necessary  
 Identify opportunities for contingency lines

**7. Special Instructions:**  
 All NIFC Command channels are linked to operate as one. The Command channel noted in the 204 is a recommendation and users may need to utilize one of the other NIFC Command channels based off of geographical location.

8. Communications							
Name	Ch	Function	Rx Freq	Rx Tone	Tx Freq	Tx Tone	Notes
NIFC C8	3	COMMAND	169.5375		164.7125	131.8 (T3)	MT. JACKSON LINKED W/NIFC'S
NIFC T7	9	TACTICAL	168.2500		168.2500		BRANCH III
CDF T24	14	AIR TO GROUND	151.3325	192.8 (T16)	151.3325	192.8 (T16)	AIR TO GROUND
CALCORD	15	MEDICAL	156.0750	156.7 (T6)	156.0750	156.7 (T6)	EMERGENCY COORDINATION
GUARD29	16	EMERGENCY	168.6250	CSQ	168.6250	110.9 (T1)	EMERGENCY USE ONLY

**9. Prepared by: Name:** J. Anderson / M. Selzer / C. Dyche    RESL

Signature:

ICS 204    Date/Time: 10/29/2019 2200    Personnel Count: 271



# ASSIGNMENT LIST (ICS 204 WF)

CONTROLLED UNCLASSIFIED  
INFORMATION/BASIC

<b>1. Incident Name:</b> <b>KINCADE</b>	<b>2. Operational Period:</b> Date From: 10/30/19    Date To: 10/31/19 Time From: 0700    Time To: 0700	<b>3. Branch</b> <b>Division</b> <b>V</b> <b>M</b>
<b>4. Operations Personnel:</b>		Page 1 of 1 <b>Mike</b>

Operations Section Chief: <b>J. Ohs / S. Lane (T)</b>	Night Ops: <b>B. Farrell / T. Lubas (T)</b>
Branch Director: <b>D. Esades</b>	Branch Safety:
Division/Group Supervisor: <b>S. Grendahl, M. Orme</b>	Air Attack: <b>N. Welch / M. Ryan</b>

<b>5. Resources Assigned:</b>		<b>** Resources Below in Bold are 12 Hour **</b>					
Resource Identifier	ALS	LWD	Leader	Personnel	Request #	Hours	Reporting Location
STC CNT 2310C			M. Krisman	22	E-65	0700-0700	ICP
STC XRI 6074C	X		S. Kean	21	E-242	0700-0700	ICP
T/F KINCADE 93			R. Tucker	17	E-9007	0700-1900	ICP
T/F KINCADE 95			P. Ojeda	15	E-9010	0700-1900	ICP
CRWT2 C-24			R. Watchkins	20	C-24	0700-1900	ICP
CRW T2 C-25			R. Pondelick	20	C-25	0700-1900	ICP
CRWT2 C-28			A. Aguirre	20	C-28	0700-1900	ICP
CRWT2 C-38			R. Teel	20	C-38	0700-1900	ICP
CRWT2 C-48			G. Rincon	20	C-48	0700-1900	ICP
<del>WT PVT E-53</del> → <b>DEV B</b>			D. Carr	2	E-53	0700-0700	ICP
EMPF SHERMAN			J. Sherman	1	O-543	0700-1900	ICP
EMPF POPE			R. Pope	1	O-547	0700-1900	ICP

**6. Work Assignments:**  
Construct and hold line utilizing direct tactics and cold trail fingers & islands where necessary to prevent fire spread.  
Improve direct fire line. Mop up 100' in from control line.

**7. Special Instructions:**  
All NIFC Command channels are linked to operate as one. The Command channel noted in the 204 is a recommendation and users may need to utilize one of the other NIFC Command channels based off of geographical location.

**8. Communications**

Name	Ch	Function	Rx Freq	Rx Tone	Tx Freq	Tx Tone	Notes
NIFC C3	2	COMMAND	170.4250		168.0750	131.8 (T3)	GEYSER PK LINKED WALL NIFC'S
CDF T27	8	TACTICAL	159.3075	192.8 (T16)	159.3075	192.8 (T16)	BRANCH V
CDF T24	14	AIR TO GROUND	151.3325	192.8 (T16)	151.3325	192.8 (T16)	AIR TO GROUND
CALCORD	15	MEDICAL	156.0750	156.7 (T6)	156.0750	156.7 (T6)	EMERGENCY COORDINATIC
GUARD29	16	EMERGENCY	168.6250	CSQ	168.6250	110.9 (T1)	EMERGENCY USE ONLY

**9. Prepared by: Name:** J. Anderson / M. Seizer / C. Dyche    RESL

Signature:

ICS 204    Date/Time: 10/29/2019 2200    Personnel Count: 179

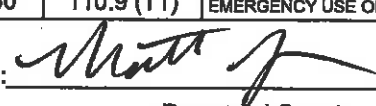






# ASSIGNMENT LIST (ICS 204 WF)

CONTROLLED UNCLASSIFIED  
INFORMATION/BASIC

<b>1. Incident Name:</b> <b>KINCADE</b>		<b>2. Operational Period:</b> Date From: 10/30/19    Date To: 10/31/19 Time From: 0700    Time To: 0700				<b>3. Branch      Division</b> <b>Dry Creek      G</b>  Page 1 of 1 <b>Golf</b>	
<b>4. Operations Personnel:</b>							
Operations Section Chief: <b>J. Ohs / S. Lane (T)</b>				Night Ops: <b>B. Farrell / T. Lubas (T)</b>			
Branch Director: <b>S. Andreis</b>				Branch Safety:			
Division/Group Supervisor: <b>P. Davis <i>LOPER</i></b>				Air Attack: <b>N. Welch / M. Ryan</b>			
<b>5. Resources Assigned:</b> <b>** Resources Below in Bold are 12 Hour **</b>							
Resource Identifier	ALS	LWD	Leader	Personnel	Request #	Hours	Reporting Location
STA OES - 6800A	X		<b>M. Staley</b>	20 +/-	E-334	0700-0700	ICP
STA XLF 1321A			<b>J. Underwood</b>	23	E-424	0700-0700	ICP
STA OES ORG 14			<b>C. Minter</b>	21	E-541	0700-0700	ICP
STC BTU 9211C			<b>S. Hawkins</b>	17	E-61	0700-0700	ICP
STC MRN 9150C → <i>DIV B</i>			<b>M. Brown</b>	18	E-62	0700-0700	ICP
STC OES 2870C					E-66	0700-0700	ICP
STG TGU 9254G			<b>M. Lamonica</b>	34	C-7	0700-0700	ICP
<b>CRW T2 C-46</b>			<b>D. Owen</b>	20	<b>C-46</b>	<b>0700-1900</b>	ICP
<b>CRWT2 C-64</b>			<b>L. Salem</b>	20	<b>C-64</b>	<b>0700-1900</b>	ICP
<i>STL MEU 9118L → <del>Div</del></i>			<b>K. Taglio</b>	5	E-22	0700-0700	ICP
WT PVT E-187			<b>M. Morris</b>	2	E-187	0700-0700	ICP
WT PVT E-56			<b>P. Casini</b>	2	E-56	0700-0700	ICP
WT PVT E-182			<b>M. Van LANDINGHAM</b>	2	E-182	0700-0700	ICP
WT PVT E-257			<b>A. Togannizi</b>	2	E-257	0700-0700	ICP
<b>FALM O-722</b>			<b>Timbersmith</b>	2	<b>O-722</b>	<b>0700-1900</b>	ICP
EMPF LECORPS			<b>J. Lecorps</b>	1	O-320	0700-0700	ICP
FEMP ZENGER			<b>C. Zenger</b>	1	O-322	0700-0700	ICP
<b>6. Work Assignments:</b> Improve control line Mop up 300'- 500' Perform Tactical Patrol around structures.							
<b>7. Special Instructions:</b> All NIFC Command channels are linked to operate as one. The Command channel noted in the 204 is a recommendation and users may need to utilize one of the other NIFC Command channels based off of geographical location.							
<b>8. Communications</b>							
Name	Ch	Function	Rx Freq	Rx Tone	Tx Freq	Tx Tone	Notes
NIFC C8	3	COMMAND	169.5375		164.7125	131.8 (T3)	MT. JACKSON LINKED W/NIFC'S
VFIRE 25	10	TACTICAL	154.2875	156.7 (T6)	154.2875	156.7 (T6)	DRY CREEK BRANCH
CDF T24	14	AIR TO GROUND	151.3325	192.8 (T16)	151.3325	192.8 (T16)	AIR TO GROUND
CALCORD	15	MEDICAL	156.0750	156.7 (T6)	156.0750	156.7 (T6)	EMERGENCY COORDINATIO
GUARD29	16	EMERGENCY	168.6250	CSQ	168.6250	110.9 (T1)	EMERGENCY USE ONLY
<b>9. Prepared by: Name:</b> J. Anderson / M. Selzer / C. Dyche      RESL							
						Signature: 	
<b>ICS 204</b>		Date/Time: 10/29/2019 2200				Personnel Count: 190	

NIMS IAP

CONTROLLED UNCLASSIFIED INFORMATION//BASIC















# ASSIGNMENT LIST (ICS 204 WF)

CONTROLLED UNCLASSIFIED  
INFORMATION/BASIC

<b>1. Incident Name:</b> <b>KINCADE</b>	<b>2. Operational Period:</b> Date From: 10/30/19    Date To: 10/31/19 Time From: 0700    Time To: 0700	<b>3. Branch</b> <b>Division</b> <b>Contingency</b> <b>Dozer Group</b>
<b>4. Operations Personnel:</b>		Page 1 of 1

Operations Section Chief: <b>J. Ohs / S. Lane (T)</b>	Night Ops: <b>B. Farrell / T. Lubas (T)</b>
Branch Director: <b>M. Brunton</b>	Branch Safety:
Division/Group Supervisor: <b>M. Turberville</b>	Air Attack: <b>N. Welch / M. Ryan</b>

5. Resources Assigned:		** Resources Below in Bold are 12 Hour **					
Resource Identifier	ALS	LWD	Leader	Personnel	Request #	Hours	Reporting Location
DOZ PVT E-18			W. Duniap	2	E-18	0700-0700	ICP
DOZ PVT E-29			P. Lowrey	2	E-29	0700-0700	ICP
DOZ PVT E-283			J. Matson	2	E-283	0700-0700	ICP
<del>DOZ PVT E-284</del> → <i>Doz B</i>			M. Miller	2	E-284	0700-0700	ICP
DOZ PVT E-295			C. Sherer	0	E-295	0700-0700	ICP
DOZ PVT E-299			R. Stevenson	0	E-299	0700-0700	ICP
DOZ PVT E-300			M. Salters	0	E-300	0700-0700	ICP
DOZ						0700-0700	ICP
DOZ						0700-0700	ICP
DOZ						0700-0700	ICP
DOZ						0700-0700	ICP
DOZ						0700-0700	ICP
DOZ						0700-0700	ICP
HEQB WATNER			M. Watner	1	0-5	0700-0700	ICP
HEQB BONDSHU			J. Bondshu	1	0-317	0700-0700	ICP
HEQB GOOD			<b>B. Good</b>	1	<b>O-450</b>	<b>0700-1900</b>	<b>ICP</b>
HEQB STEVENS			A. Stevens	1	O-612	0700-0700	ICP
HEQB RUDOLPH (T)			R. Rudolph	1	O-613	0700-0700	ICP

**6. Work Assignments:**

**7. Special Instructions:**  
All NIFC Command channels are linked to operate as one. The Command channel noted in the 204 is a recommendation and users may need to utilize one of the other NIFC Command channels based off of geographical location.

**8. Communications**

Name	Ch	Function	Rx Freq	Rx Tone	Tx Freq	Tx Tone	Notes
NIFC C10	4	COMMAND	170.4125		165.9625	131.8 (T3)	MT. ST. HELENA LINKED WALL NIFC'S
CDF T24	14	AIR TO GROUND	151.3325	192.8 (T16)	151.3325	192.8 (T16)	AIR TO GROUND
CALCORD	15	MEDICAL	156.0750	156.7 (T6)	156.0750	156.7 (T6)	EMERGENCY COORDINATIO
GUARD29	16	EMERGENCY	168.6250	CSQ	168.6250	110.9 (T1)	EMERGENCY USE ONLY

**9. Prepared by: Name:** J. Anderson / M. Selzer / C. Dyche    RESL

Signature:

ICS 204    Date/Time: 10/29/2019 2200    Personnel Count: 13



# ASSIGNMENT LIST (ICS 204 WF)

CONTROLLED UNCLASSIFIED  
INFORMATION/BASIC

<b>1. Incident Name:</b> <b>KINCADE</b>	<b>2. Operational Period:</b> Date From: 10/30/19    Date To: 10/31/19 Time From: 0700    Time To: 0700	<b>3. Branch</b> <b>Staging</b>  <b>Healdsburg</b>
--	---	---

<b>4. Operations Personnel:</b>		Page 1 of 2
Operations Section Chief: <b>J. Ohs / S. Lane (T)</b>	Night Ops: <b>B. Farrell / T. Lubas (T)</b>	
Branch Director:	Branch Safety:	
Division/Group Supervisor: <b>A. Hubbs, J. Smith (T)</b>	Air Attack: <b>N. Welch / M. Ryan</b>	

<b>5. Resources Assigned:</b>		** Resources Below in Bold are 12 Hour **					
Resource Identifier	ALS	LWD	Leader	Personnel	Request #	Hours	Reporting Location
STA XSF 2250A			P. Siguenza	22	E-225	0700-0700	Healdsburg Staging
STA OES E-6841			M. Spaulding	22	E-544	0700-0700	Healdsburg Staging
STA OES ORG 6			C. Barney	22	E-542	0700-0700	Healdsburg Staging
<b>STS OES ORG 13</b>							<b>Healdsburg Staging</b>
STA OES 1860A			E. McCoy	21	E-336	0700-0700	Healdsburg Staging
STA OES 4804A			E. Oliveri	20 +/-	E-324	0700-0700	Healdsburg Staging
STA OES 4805A			J. Taylor	22	E-325	0700-0700	Healdsburg Staging
STC OES 4081C → <i>CLASH STAGING GRP</i>			A. Moreno	17	E-244	0700-0700	Healdsburg Staging
ENG SIS E-553			C. Humbert	4	E-377	0700-1900	Healdsburg Staging
ENG PVT E-454			T. Nelsen	3	E-454	0700-1900	Healdsburg Staging
ENG GNDX E-342			J. Starika	4	E-465	0700-1900	Healdsburg Staging
ENG HLF E-671			R. Hanson	3	E-473	0700-1900	Healdsburg Staging
ENG PVT E-361			M. Friess	4	E-466	0700-1900	Healdsburg Staging
ENG CES E-469			W. Adler	3	E-467	0700-1900	Healdsburg Staging
DOZ PVT E-189			R. Holtz	2	E-189	0700-0700	Healdsburg Staging
DOZ PVT E-194			E. Dills	2	E-194	0700-0700	Healdsburg Staging
DOZ PVT E-196			C. Darr	2	E-196	0700-0700	Healdsburg Staging
DOZ PVT E-281			H. Leaverton	2	E-281	0700-0700	Healdsburg Staging

**6. Work Assignments:**  
 Maintain 3 minute response time.  
 Monitor command frequencies.

**7. Special Instructions:**  
 All NIFC Command channels are linked to operate as one. The command channel noted in the 204 is a recommendation and users may need to utilize one of the other NIFC Commands based off of geographical location.

**8. Communications**

Name	Ch	Function	Rx Freq	Rx Tone	Tx Freq	Tx Tone	Notes
NIFC C8	3	COMMAND	169.5375		164.7125	131.8 (T3)	MT. JACKSON LINKED W/NIFC'S
CDF T24	14	AIR TO GROUND	151.3325	192.8 (T16)	151.3325	192.8 (T16)	AIR TO GROUND
CALCORD	15	MEDICAL	156.0750	156.7 (T6)	156.0750	156.7 (T6)	EMERGENCY COORDINATION
GUARD29	16	EMERGENCY	168.6250	CSQ	168.6250	110.9 (T1)	EMERGENCY USE ONLY

**9. Prepared by: Name:** J. Anderson / M. Selzer / C. Dyché    RESL

Signature:

**ICS 204**    Date/Time: 10/29/2019 2200    Personnel Count: 175



# ASSIGNMENT LIST (ICS 204 WF)

CONTROLLED UNCLASSIFIED  
INFORMATION/BASIC

<b>1. Incident Name:</b> <b>KINCADE</b>	<b>2. Operational Period:</b> Date From: 10/30/19    Date To: 10/31/19 Time From: 0700    Time To: 0700	<b>3. Branch</b> <b>Staging</b>  <b>ICP</b>
--	---	---

<b>4. Operations Personnel:</b>		Page 1 of 1
Operations Section Chief: <b>J. Ohs / S. Lane (T)</b>	Night Ops: <b>B. Farrell / T. Lubas (T)</b>	
Branch Director:	Branch Safety:	
Division/Group Supervisor: <b>A. Hubbs, J. Smith (T)</b>	Air Attack: <b>N. Welch / M. Ryan</b>	

<b>5. Resources Assigned:</b>		<b>** Resources Below in Bold are 12 Hour **</b>					
Resource Identifier	ALS	LWD	Leader	Personnel	Request #	Hours	Reporting Location
DOZ PVT E-485			G. Yates	2	E-485	0700-0700	ICP
DOZ PVT E-505			L. Gill	2	E-505	0700-0700	ICP
<i>HEALD BURBS</i> DOZ PVT E-506			W. Smith	2	E-506	0700-0700	ICP
DOZ PVT E-507			L. Wilson	2	E-507	0700-0700	ICP
DOZ PVT E-508			K. Klser	2	E-508	0700-0700	ICP
DOZ PVT E-509			W. Johnson	2	E-509	0700-0700	ICP
<i>HEALD BURBS</i> DOZ PVT E-510			B. Simunaci	3	E-510	0700-0700	ICP
DOZ PVT E-511			T. Oferall	2	E-511	0700-0700	ICP
DOZ PVT E-512			A. Ramirez	2	E-512	0700-0700	ICP
DOZ PVT E-513			D. Heninger	2	E-513	0700-0700	ICP
DOZ PVT E-514			A. Bushey	2	E-514	0700-0700	ICP

**6. Work Assignments:**  
 Maintain 3 minute response time.  
 Monitor command frequencies.

**7. Special Instructions:**  
 All NIFC Command channels are linked to operate as one. The Command channel noted in the 204 is a recommendation and users may need to utilize one of the other NIFC Command channels based off of geographical location.

**8. Communications**

Name	Ch	Function	Rx Freq	Rx Tone	Tx Freq	Tx Tone	Notes
NIFC C8	3	COMMAND	169.5375		164.7125	131.8 (T3)	MT. JACKSON LINKED W/NIFC'S
CDF T24	14	AIR TO GROUND	151.3325	192.8 (T16)	151.3325	192.8 (T16)	AIR TO GROUND
CALCORD	15	MEDICAL	156.0750	156.7 (T6)	156.0750	156.7 (T6)	EMERGENCY COORDINATIO
GUARD29	16	EMERGENCY	168.6250	CSQ	168.6250	110.9 (T1)	EMERGENCY USE ONLY

**9. Prepared by: Name:** J. Anderson / M. Selzer / C. Dyche    RESL

Signature:

ICS 204    Date/Time: 10/29/2019 2200    Personnel Count: 23

# AIR OPERATIONS SUMMARY ICS-220

**Incident Name / Number**  
KINCADE / CA-LNU-019376

**Sunrise Startup Cutoff Sunset**  
0734 0804 1745 1815

**General Remarks, Safety Notes, Hazards, Air Operations Special Equipment, etc.**  
 TRACK ALL DIPSITE LOCATIONS / NUMBER OF DIPS / GALLONS TAKEN.  
 TRACK ALL DROP LOCATIONS / NUMBER OF DROPS / GALLONS DROPPED  
 ALL GPS DATA TO BE COLLECTED IN DEGREES, MINUTES, DECIMAL MINUTES FORMAT.  
 AVOID Aerial Application of Retardant / Foam / Agent within 300' of Waterways, Bodies of Water, etc.  
 If Retardant / Foam / Agent is Dropped Within These Areas Immediately Notify the AOB and Provide the Following Information: Lat / Long, Estimated Number of Gallons and a Map Detailing The Area.  
 CFR Windsor FD OES 374 E-133 / W/T's E136 & E-137 / COMM TRLR E-107 / T2 TRLR E-113 / T1 TRLR E-139  
 Your Sunrise and Sunset info has not been updated for the current Op period

**Time Prepared**  
2000

**Date Prepared**  
Tuesday October 29, 2019

**Prepared By**  
Tom Swanson *YS*

**Shutdown**  
1845

**Operational Period - Date**  
Wednesday October 30, 2019

**Operational Period - Time**  
0700-0700

**Helibase Information**  
Name Cloverdale  
Latitude 38 46.34N  
Longitude 122 59.33W

**TFR Information**  
Request #  
Radius: 7 NM  
Altitude: 10,000 MSL  
Centerpoint: Polygon Lat Long  
NOTAMS: 9 / 2484  
Frequency 123.1750  
<http://tfr.faa.gov/tfr2/list.html>

**Rescue Ship Information**  
Name 902  
Phone Communications (925) 325-4158  
Make/Model 205A1++  
Location Cloverdale  
Request Procedure for These Aircraft: Cloverdale HB  
Incident Communications  
See Medical Plan For Additional Info

Frequencies	TX	Tone	RX	Tone	AM / FM	Position	Name	Phone	Trainee	Phone
Command	165.9625	131.8 (T3)	170.4125		FM	AOBD	Tom Swanson	805.903.3419		
AIR / GROUND - TACTICAL	151.3325	192.8000	151.3325	192.8 (T16)	FM / TAC 24	ASGS	Burke Kremensky	619.592.9122		
AIR/AIR ROTARY WING	123.1750		123.1750		AM	HEBM	Kody Hill	530.917.1438		
Helco Briefing						HLCO	Mike Deacon	530.708.2716		
AIR TACTICS	166.6125		166.6125		FM	HLCO	Paul Karpus	209.743.7275	John Frederick	209.728.5448
Air Attack Briefing	118.4250		118.4250		AM	HLCO(T)	Sean Ketchum	408.835.1711		
TOLC	119.1750		119.1750		AM	AAML	Tim Shiffer	650.245.1715		
DECK	163.1000		163.1000		FM	ATGS	Jake Serrano	707.322.4285		
CALCORD - MEDICAL	156.0750	156.7 (S)	156.0750	156.7 (S)	FM	ATGS	Nick Welch	707.484.5060		
AIRGUARD - Emergency Only	168.6250	110.9 (1)	168.6250		FM	ASM	Tim Steponovich	323.919.6369		

**HELICOPTERS ( Use page 2 if Needed )**

FAA #	Type	Make/Model	Helibase	Avail	Start	Remarks / A #	FAA #	Type	Make/Model	Helibase	Avail	Start	Remarks
805PJ	I	UH-60A	Cloverdale	0730	0800	Bucket / 15	822	I	UH-60L	Cloverdale	0730	0800	Water Dropping
2CK	I	S-61	Cloverdale	0730	0800	Tank / 18	830	I	UH-60L	Cloverdale	0730	0800	Water Dropping
3CK	I	S-61	Cloverdale	0730	0800	Bucket / 16	831	I	UH-60L	Cloverdale	0730	0800	Water Dropping
35S	I	S-64	Cloverdale	0730	0800	Tank / 41	7PJ	II	205++	Cloverdale	0730	800	Restricted / 20
92HT	I	S-64	Cloverdale	0730	0800	Tank / 17	2AH	II	212	Cloverdale	0730	800	Standard / 21
17FH	I	UH60A	Cloverdale	0730	0800	Longline / 79	5TK	II	205	Cloverdale	0730	800	Standard / 22
1KA	I	K-MAX	Cloverdale	0730	0800	Longline / 80	1NE	II	205	Cloverdale	0730	800	Restricted / 19
25M	I	S-64	Cloverdale	0730	0800	Tank / 120	902	II	205	Cloverdale	0730	800	Holst / 30
3HT	I	S-64	Cloverdale	0730	0800	Tank / 121	4SH	III	A-Star	Cloverdale	0730	800	Helco / 23
5HT	I	S-64	Cloverdale	0730	0800	Tank / 122	7AC	III	407	Cloverdale	0730	800	Helco / 24
1AJ	I	CH-47	Cloverdale	0730	0800	Longline / 123	5AS	III	407	Cloverdale	0730	800	Recon / 83
5CK	I	S-61	Cloverdale	0730	0800	Longline / 124							
801	I	CH-47	Cloverdale	0730	0800	Water Dropping							
802	I	CH-47	Cloverdale	0730	0800	Water Dropping							
824	I	UH-60L	Cloverdale	0730	0800	Water Dropping							

**FIXED WING ( Use Page 2 if Needed )**

FAA #	Type	Make/Model	Base	Avail	Start	Remarks	FAA #	Type	Make/Model	Base	Avail	Start	Remarks
AA503		A200CT	Santa Rosa	800	800								
AA140		OV-10	Santa Rosa	800	800								
AA505		OV-10D	MCC	800	800	ASM - Charlie							
T85	III	S-2	Santa Rosa	800	800								
T86	III	S-2	Santa Rosa	800	800								



# ICS 205 - INCIDENT RADIO COMMUNICATIONS PLAN

CONTROLLED UNCLASSIFIED  
INFORMATION//BASIC

<b>1. Incident Name:</b> KINCADE BRANCH I / V / CALISTOGA	<b>2. Date/Time Prepared</b> Date: 10/29/2019 Time: 1930	<b>3. Operational Period:</b> Date From: 10/30/19 Time From: 0700 Date To: 10/31/19 Time To: 0700
---	--	---

4. Communications									
Ch#	Function	Name	Assigned To	Rx Freq	Rx Tone	Tx Freq	Tx Tone	Notes	
1									
2	COMMAND	NIFC C3	ALL DIVS	170.4250		168.0750	131.8 (T3)	GEYSER PK LINKED W/ALL NIFC'S	
3	COMMAND	NIFC C8	ALL DIVS	169.5375		164.7125	131.8 (T3)	MT. JACKSON LINKED W/NIFC'S	
4	COMMAND	NIFC C10	ALL DIVS	170.4125		165.9625	131.8 (T3)	MT. ST. HELENA LINKED W/ALL NIFC'S	
5	COMMAND	NIFC C9	ALL DIVS	170.0125		165.2500	131.8 (T3)	ATLAS PK LINKED W/ALL NIFC'S	
6									
7									
8	TACTICAL	CDF T27	DIVS H/L & M	159.3075	192.8 (T16)	159.3075	192.8 (T16)	BRANCH V	
9	TACTICAL	CDF T29	DIV P	151.3475	192.8 (T16)	151.3475	192.8 (T16)	BRANCH V	
10	TACTICAL	CDF T30	DIV A	151.3925	192.8 (T16)	151.3925	192.8 (T16)	BRANCH I	
11	TACTICAL	CDF T31	DIV B	159.3825	192.8 (T16)	159.3825	192.8 (T16)	BRANCH I	
12	TACTICAL	CDF T32	DIV D	151.2425	192.8 (T16)	151.2425	192.8 (T16)	BRANCH I	
13	TACTICAL	VFIRE 24	CALISTOGA STR. PRO. GRP.	154.2725	156.7 (T6)	154.2725	156.7 (T6)	CALISTOGA CONTINGENCY	
14	AIR TO GROUND	CDF T24	ALL DIVS	151.3325	192.8 (T16)	151.3325	192.8 (T16)	AIR TO GROUND	
15	MEDICAL	CALCORD	ALL DIVS	156.0750	156.7 (T6)	156.0750	156.7 (T6)	EMERGENCY COORDINATION	
16	EMERGENCY	GUARD29	ALL DIVS	168.6250	CSQ	168.6250	110.9 (T1)	EMERGENCY USE ONLY	
17									
18									
19									
20	EMERGENCY	GUARD29	ALL DIVS	168.6250	CSQ	168.6250	110.9 (T1)	EMERGENCY USE ONLY	

**5. Special Instructions**

**TO CONFIRM THE MOST CURRENT CLONE, ENSURE YOUR CHANNEL 16 OR 20 DISPLAY MATCHES CHANNEL 16 OR 20 OF THE 205**

<b>6. Prepared by (Communications Unit Leader):</b> Name: J. Brooks (COML) C. Johns (COML t)	Signature:
--	------------

ICS 205 - CONTROLLED UNCLASSIFIED INFORMATION//BASIC	Date/Time: 10/29/19 1930
--	--------------------------



# ICS 205 - INCIDENT RADIO COMMUNICATIONS PLAN

CONTROLLED UNCLASSIFIED INFORMATION/BASIC

**1. Incident Name:** KINCADE  
**BRANCH III / DRY CREEK / CONT.**


**2. Date/Time Prepared** Date: 10/29/2019 Time: 1930  
**3. Operational Period:** Date To: 10/31/19 Time To: 0700

**4. Communications**

Ch#	Function	Name	Assigned To	Rx Freq	Rx Tone	Tx Freq	Tx Tone	Notes
1								
2	COMMAND	NIFC C3	ALL DIVS	170.4250		168.0750	131.8 (T3)	GEYSER PK LINKED W/ALL NIFC'S
3	COMMAND	NIFC C8	ALL DIVS	169.5375		164.7125	131.8 (T3)	MT. JACKSON LINKED W/ALL NIFC'S
4	COMMAND	NIFC C10	ALL DIVS	170.4125		165.9625	131.8 (T3)	MT. ST. HELENA LINKED W/ALL NIFC'S
5	COMMAND	NIFC C9	ALL DIVS	170.0125		165.2500	131.8 (T3)	ATLAS PK LINKED W/ALL NIFC'S
6								
7	TACTICAL	NIFC T5	DIV E	166.7250		166.7250		BRANCH III
8	TACTICAL	NIFC T6	SEBASTOPOL BRANCH	166.7750		166.7750		
9	TACTICAL	NIFC T7	CHALK STR. PRO. GRP.	168.2500		168.2500		BRANCH III
10	TACTICAL	VFIRE 25	DRY CREEK BRANCH	154.2875	158.7 (T6)	154.2875	156.7 (T6)	
11	TACTICAL	VFIRE 24	SANTA ROSA BRANCH	154.2725	156.7 (T6)	154.2725	156.7 (T6)	
12	TACTICAL	CDF T26	DIV F	159.2925	192.8 (T16)	159.2925	192.8 (T16)	BRANCH III
13	TACTICAL	CDF T29	RIVER & OCCIDENTAL BR'S	151.3475	192.8 (T16)	151.3475	192.8 (T16)	
14	AIR TO GROUND	CDF T24	ALL DIVS	151.3325	192.8 (T16)	151.3325	192.8 (T16)	AIR TO GROUND
15	MEDICAL	CALCORD	ALL DIVS	156.0750	156.7 (T6)	156.0750	156.7 (T6)	EMERGENCY COORDINATION
16	EMERGENCY	GUARD29	ALL DIVS	168.6250	CSQ	168.6250	110.9 (T1)	EMERGENCY USE ONLY
17								
18								
19								
20	EMERGENCY	GUARD29	ALL DIVS	168.6250	CSQ	168.6250	110.9 (T1)	EMERGENCY USE ONLY

**5. Special Instructions**

**TO CONFIRM THE MOST CURRENT CLONE, ENSURE YOUR CHANNEL 16 OR 20 DISPLAY MATCHES CHANNEL 16 OR 20 OF THE 205**

**6. Prepared by (Communications Unit Leader):** Name: J. Brooks (COML) C. Johns (COML) Signature:  Date/Time: 10/29/19 1930

ICS 205 - CONTROLLED UNCLASSIFIED INFORMATION/BASIC

# TRAINING MESSAGE

## TRAINERS

REMEMBER TO REVIEW THE TASKBOOK WITH YOUR TRAINEE EACH DAY AND SET GOALS FOR THE OPERAITONAL PERIOD

## TRAINEES

ALWAYS KEEP YOUR TASKBOOK SECURED. IF LOST, YOU RUN THE RISK OF LOSING CREDIT FOR THE TASKS COMPLETED

## DEMOBING

MAKE SURE TO BRING YOUR TASKBOOK, EVALUATIONS, & 225'S TO TRAINING BEFORE YOU DEMOB.

*Don't train until you get it right, train until you cannot get it wrong!*

**Any questions, please contact the**

**Training Specialist:**

**Shane Vargas at (530) 410-4225**



# DEMOBILIZATION INSTRUCTIONS KINCADE CA-LNU-019376



## DEMOB PROCEDURES

- CHECK THE DEMOB LIST EACH MORNING. YOU CAN FIND THE DEMOB LIST THROUGH THE "QR" CODE ON THE I.A.P. COVER OR ON LISTS POSTED THROUGHOUT CAMP. **ONLY REPORT TO DEMOB AT YOUR SCHEDULED TIME.** EARLY ADMITTANCE WILL NOT BE ALLOWED.
- **FLIGHT ARRANGEMENTS MUST BE MADE 48HRS PRIOR TO RELEASE.**
- REPORT TO DEMOB AT APPOINTMENT TIME TO RECEIVE A CHECKOUT FORM (ICS-221), THEN GO TO THE FOLLOWING UNITS TO OBTAIN THE NECESSARY SIGNATURES:
  - ✓ SUPPLY UNIT
  - ✓ COMMUNICATIONS UNIT
  - ✓ GROUND SUPPORT/VEHICLE INSPECTION\*\*\*
  - ✓ DOCUMENTATION UNIT
  - ✓ TIME UNIT
  - ✓ TRAINING UNIT (IF APPLICABLE)
  - ✓ ACCOMMODATIONS (IF APPLICABLE)

### \*\*\*VEHICLE INSPECTION:

- THE DEMOB UNIT WILL INFORM YOU IF THE VEHICLE NEEDS TO BE INSPECTED.
- YOU MUST HAVE THE ICS-221 DEMOB FORM WITH YOU AT VEHICLE INSPECTION.
- A VEHICLE INSPECTION TIME WILL BE PROVIDED WHEN YOU INITIALLY ARRIVE TO THE DEMOBILIZATION UNIT.
- **DO NOT REPORT FOR VEHICLE INSPECTION PRIOR TO YOUR APPOINTMENT**

**HAVE YOUR EQUIPMENT INVENTORY CARD READY WHEN HEADING TO VEHICLE INSPECTION.**

**RETURN THE COMPLETED ICS-221 FORM TO THE DEMOB UNIT AND TRAVEL HOME SAFE!**

## **KINCADE FINANCE MESSAGE**

### **Shift Tickets:**

- **DIVS and OPBD must complete shift tickets for all hired equipment, including fallers and runners.**
- **Turn in completed shift tickets daily to the Time Unit.**
- **Shift Ticket examples are in the IAP.**

### **eFC-33:**

- **Report to the Time Unit for initial inputs and updates.**

### **COMP/CLAIMS:**

- **If any Claims issues arise, document on a ICS-213 and take pictures. Notify the COMP/CLAIMS Unit ASAP for follow-up.**
- **Computers are setup for IAPS data entry for CAL FIRE personnel.**

### **Out-of-State Resources:**

- **Single resources report to the Northwest Crews AREP located across from the Finance trailers. Drop off a copy of your agreement/contract as well as CTRs or shift tickets.**
- **Strike teams report to the OES Incident Support unit located next to Finance trailers. AREPs and forms will be located there.**



### 24HR LINE RESOURCE - 2 OPERATOR

EMERGENCY SHIFT TICKET and EVALUATION FORM  
The responsible Government Officer will complete this form each shift.

Contractor Name: **THE BEST DOZERS LLC**  
Operator #1: **FIRST & LAST**  
Operator #2: **FIRST & LAST**

Incident or Project Name: **KINCADE**  
Incident Number: **CA-LNU-0193767**  
Request Number: **E-444**

Agreement Number: **MMU-0000016953**

Equipment Make: **1999 PETERBILT 379**  
Equipment Model / Type: **TRANSPORT 18 WHEEL**  
License Number: **12345A1**

Operator Furnished By:  Contractor  Government  
Operating Supplies Furnished By:  Contractor  Government

Inspected:  Under Agreement  
Released by Government:   
Withdrawn by Contractor:   
Remarks/Comments: **2 OPERATORS**

Date Mo / Day	Start	Stop	Work	Days / Miles
9/6	0701	2400	17	DIV X
9/6	0001	0700	7	DIV X

Vendor Rating: **NO DAMAGE / NO CLAIM**  
Govt. Rep. Name and Position - PRINT: **NO DAMAGE / NO CLAIM**

Print Your Name: **NO DAMAGE / NO CLAIM**  
Govt. Rep. Signature: **NO DAMAGE / NO CLAIM**  
Contractor Signature: **NO DAMAGE / NO CLAIM**  
Date: **9/6/17** Time: **0700**

Overall Performance: **VENDOR RATING MUST BE DONE**

\* NOTE: any rating of POOR requires an explanation in Comment Section.  
\*\* Final evaluation or for more documentation, use a CALFIRE Form 280 or equivalent.

### 12HR LINE RESOURCE - 1 OPERATOR

EMERGENCY SHIFT TICKET and EVALUATION FORM  
The responsible Government Officer will complete this form each shift.

Contractor Name: **THE BEST DOZERS LLC**  
Operator #1: **FIRST & LAST**  
Operator #2: **FIRST & LAST**

Incident or Project Name: **KINCADE**  
Incident Number: **CA-LNU-0193767**  
Request Number: **E-666**

Agreement Number: **MMU-0000016955**

Equipment Make: **2004 CAT**  
Equipment Model / Type: **D6N / TYPE II E**  
License Number: **COMPLETE VIN#**

Operator Furnished By:  Contractor  Government  
Operating Supplies Furnished By:  Contractor  Government

Inspected:  Under Agreement  
Released by Government:   
Withdrawn by Contractor:   
Remarks/Comments: **1 OPERATOR**

Date Mo / Day	Start	Stop	Work	Days / Miles
9/7	0001	0700	7	OFF SHIFT
9/7	0701	1900	12	DIV X
9/7	1901	2400	5	OFF SHIFT

Vendor Rating: **NO DAMAGE / NO CLAIM**  
Govt. Rep. Name and Position - PRINT: **NO DAMAGE / NO CLAIM**

Print Your Name: **NO DAMAGE / NO CLAIM**  
Govt. Rep. Signature: **NO DAMAGE / NO CLAIM**  
Contractor Signature: **NO DAMAGE / NO CLAIM**  
Date: **9/6/17** Time: **1900**

Overall Performance: **VENDOR RATING MUST BE DONE**

\* NOTE: any rating of POOR requires an explanation in Comment Section.  
\*\* Final evaluation or for more documentation, use a CALFIRE Form 280 or equivalent.



### 24HR / 12HR TRANSITION SHIFT TICKET

EMERGENCY SHIFT TICKET and EVALUATION FORM  
The responsible Government Officer will complete this form each shift.

Contractor Name: **THE BEST DOZERS LLC**  
Operator #1: **FIRST & LAST**  
Operator #2: **FIRST & LAST**

Incident or Project Name: **KINCADE**  
Incident Number: **CA-LNU-0193767**  
Request Number: **E-444**

Agreement Number: **MMU-0000016953**

Equipment Make: **1999 PETERBILT 379**  
Equipment Model / Type: **TRANSPORT 18 WHEEL**  
License Number: **12345A1**

Operator Furnished By:  Contractor  Government  
Operating Supplies Furnished By:  Contractor  Government

Inspected:  Under Agreement  
Released by Government:   
Withdrawn by Contractor:   
Remarks/Comments: **2 OPERATORS**

Date Mo / Day	Start	Stop	Work	Days / Miles
9/6	0701	1900	12	DIV X
9/6	1901	2400	5	OFF SHIFT

Vendor Rating: **NO DAMAGE / NO CLAIM**  
Govt. Rep. Name and Position - PRINT: **NO DAMAGE / NO CLAIM**

Print Your Name: **NO DAMAGE / NO CLAIM**  
Govt. Rep. Signature: **NO DAMAGE / NO CLAIM**  
Contractor Signature: **NO DAMAGE / NO CLAIM**  
Date: **9/6/17** Time: **1900**

Overall Performance: **VENDOR RATING MUST BE DONE**

\* NOTE: any rating of POOR requires an explanation in Comment Section.  
\*\* Final evaluation or for more documentation, use a CALFIRE Form 280 or equivalent.

### 24HR IN CAMP RESOURCE

EMERGENCY SHIFT TICKET and EVALUATION FORM  
The responsible Government Officer will complete this form each shift.

Contractor Name: **THE BEST CAMP LLC**  
Operator #1: **FIRST & LAST**  
Operator #2: **FIRST & LAST**

Incident or Project Name: **KINCADE**  
Incident Number: **CA-LNU-0193767**  
Request Number: **E-333**

Agreement Number: **MMU-0000015960**

Equipment Make: **TENT**  
Equipment Model / Type: **WESTERN SHELTER 19X36**  
License Number: **COMPLETE VIN#**

Operator Furnished By:  Contractor  Government  
Operating Supplies Furnished By:  Contractor  Government

Inspected:  Under Agreement  
Released by Government:   
Withdrawn by Contractor:   
Remarks/Comments: **(4) TENTS, CAMPER WARDERS FLOOR & INSULATED ROOF #7W&8**

Date Mo / Day	Start	Stop	Work	Days / Miles
9/2	0001	2400	24	ICP

Vendor Rating: **NO DAMAGE / NO CLAIM**  
Govt. Rep. Name and Position - PRINT: **NO DAMAGE / NO CLAIM**

Print Your Name: **NO DAMAGE / NO CLAIM**  
Govt. Rep. Signature: **NO DAMAGE / NO CLAIM**  
Contractor Signature: **NO DAMAGE / NO CLAIM**  
Date: **9/6/17** Time: **1900**

Overall Performance: **VENDOR RATING MUST BE DONE**

\* NOTE: any rating of POOR requires an explanation in Comment Section.  
\*\* Final evaluation or for more documentation, use a CALFIRE Form 280 or equivalent.





# PUBLIC INFORMATION



## Official Sources of Public Information

**Incident Information Line: (707) 967-4207**

**Incident Media Line: (707) 583-1479**

**Incident Website: [www.fire.ca.gov](http://www.fire.ca.gov)**

### Media Law

The California State Penal Code Section 409.5(d) allows the news media to enter scenes of disaster, riot, or civil disturbance. Properly identified members of the news media should not be restricted from entering locations specified within the code. However, this does not include crime scenes, and does not imply that the news media may interfere with incident operations while they are in the areas of concern. If entering such a location that is hazardous, they should be advised; media access cannot be prevented for safety reasons unless their presence would impede CAL FIRE's mitigation of the incident or the disturbing of evidence. When working around the media, remember:

- Media is not permitted on private property without the property owners permission.
- If approached and questioned by the media and or the public, talk about your assignment or task at hand. Remember to wear all the appropriate PPE.
- If needed call for an incident PIO through the chain of command.
- Never speculate, give opinions or speak for others.
- There is no such thing as an "off the record" comment.

### CAL FIRE Social Media Policy (Social Media 0691)

Social Media is increasingly being used by public agencies, the media as well as the public. This form of communication continues to grow rapidly in order to supply the instant gratification needs of society. Therefore when on a CAL FIRE incident you will adhere to the CAL FIRE Social Media Policy, 0691. You can get further information about the CAL FIRE Social Media Policy from the incident Public Information Officer. While assigned to the incident, there will be no posting of:

- Inappropriate information or materials
- No opinions
- No endorsements
- Inappropriate pictures or videos

### Lost and Found

The Information Section will manage Lost and Found items for the incident. If you have lost an item leave your contact information and what you have lost at the Information Section. If you have found an item on the incident bring the item to the Information Section with your contact information as well.

### Incident Base Camp Mailing Address

**c/o Public Information Office  
1350 Bennett Valley Rd.  
Jockey Club Entrance  
Santa Rosa, CA 95404**

# Peer Support Team Message:



## KINCADE INCIDENT PEER SUPPORT:

The gravity of this event is large. Many of us have been impacted by the events that have occurred here, as well as past incidents.

The KINCADE Incident Peer Support Team is a multi-agency team that has been assembled to provide Peer Support. The team consist of members from various Local, State, and Federal Departments who represent fire, law enforcement, ems and public safety. Peers are available at the ICP. Assigned Peers and culturally competent Clinicians are available to help on an individual and/or group basis.

Some of the signs and symptoms you may be experiencing include, but are not limited to:

Irritability, lack of sleep, quick to anger, isolation, above average tobacco use, an increase in negative coping mechanisms such as excessive alcohol and/or substance abuse. You might experience lack of appetite, isolate yourself, or various other unexplained reactions to normal every day events.

You may not be experiencing these symptoms now. However, you may find yourself experiencing them when you return to your home or Unit. You may be triggered by a past event, that has impacted you, while assigned to future incidents. A sight, sound, smell, or touch could trigger a memory, that is affecting you now, but you're not sure why?

If you find yourself in this situation and need to talk to someone, please come by the Peer trailer, or contact your Employee Assistance Program (EAP). EAP programs are here to help. It is important to talk to someone and get stuff off your chest vs carrying this around for your career.

We are here to help.



**Archaeological and Historic Properties:  
General Fire-line Guidance.**

**Do not compromise safety for the protection and preservation of archaeological and historic properties.  
When possible and prudent:**

1. Be on the lookout for prehistoric and historic archaeological sites. These sites typically occur adjacent to streams and springs, confluences are often especially sensitive. However, sites can occur in other areas too. The most common indicators of prehistoric sites in this area (North Coast Ranges) are scatters of shiny black obsidian flakes from tool making activities and dark midden soils. Historic-era sites include homesteads that contain foundations, rock chimneys, and stone / brick-lined wells. Historic-era mining sites are possible as well.
2. Note, that not much of the area has ever been surveyed for archaeological resources and many sites out there have yet to be discovered.
3. If you observe archaeological resources, flagged or unflagged, attempt to avoid with ground disturbing activities altogether.
4. If avoidance is not possible, minimize ground disturbance. Use a hand crew rather than a dozer to remove fuels from control lines that must cross site areas if possible.
5. Leave all artifacts in place as some may have been intentionally placed for religious or ceremonial reasons.
6. Note locations of discovered resources on a map, better yet, take site coordinates with a GPS. Leave information for the archaeologist so that the sites can be relocated and protected during Fire Suppression Repair. Flag the site in red if possible.
7. If you encounter a burial or other human remains, cease work in that area and contact the archaeologist immediately.

Your help preserving California's non-renewable cultural resources is appreciated.

**Contact Information:**

Christopher Lloyd  
Ukiah Field Office Archaeologist  
Bureau of Land Management  
(707) 468-4075  
[crloyd@blm.gov](mailto:crloyd@blm.gov)

Ben Harris  
Associate State Archaeologist for CAL-Fire's Northern Region  
Coverage area: MEU, LNU, CZU, and SCU  
Northern Region Headquarter  
135 Ridgway Avenue  
Santa Rosa, CA 95401  
Office: (707) 576-2966  
Mobile: (707) 529-7989  
[Ben.harris@fire.ca.gov](mailto:Ben.harris@fire.ca.gov)

# KINCADE Incident Maps may be accessed by

going to:

<https://ftp.nifc.gov>

or google: "nifc ftp"

Click:

>Incident Specific Data

>calif\_n

>!CALFIRE

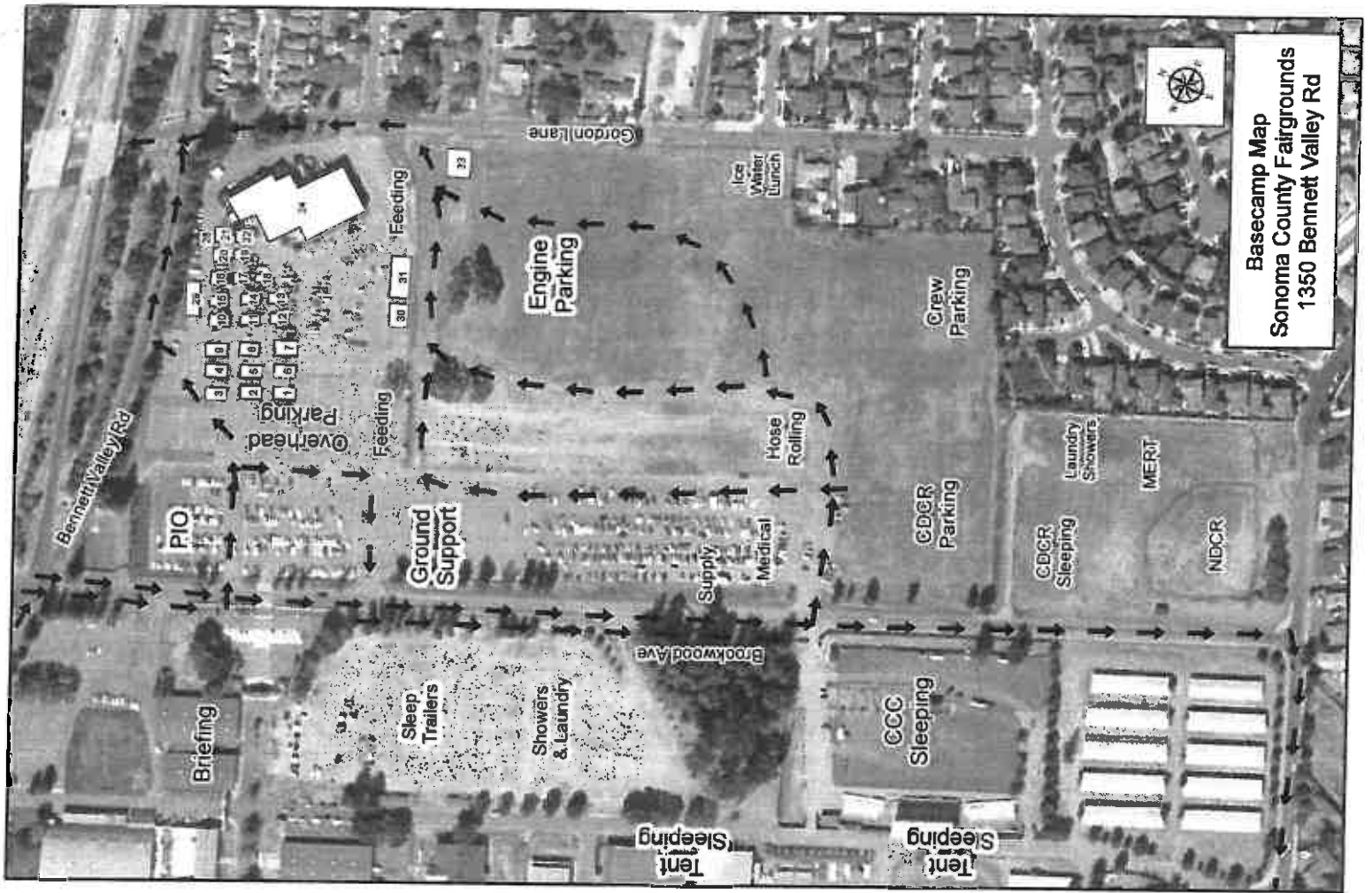
>2019\_Incidents

>CA-LNU-019376\_Kincade

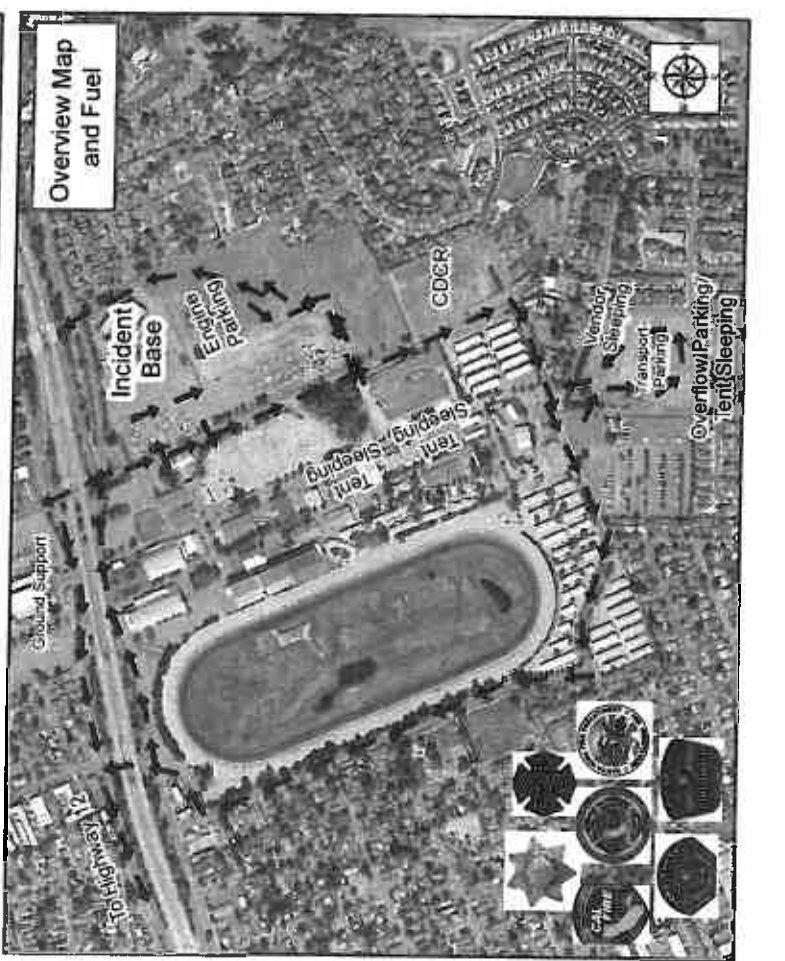
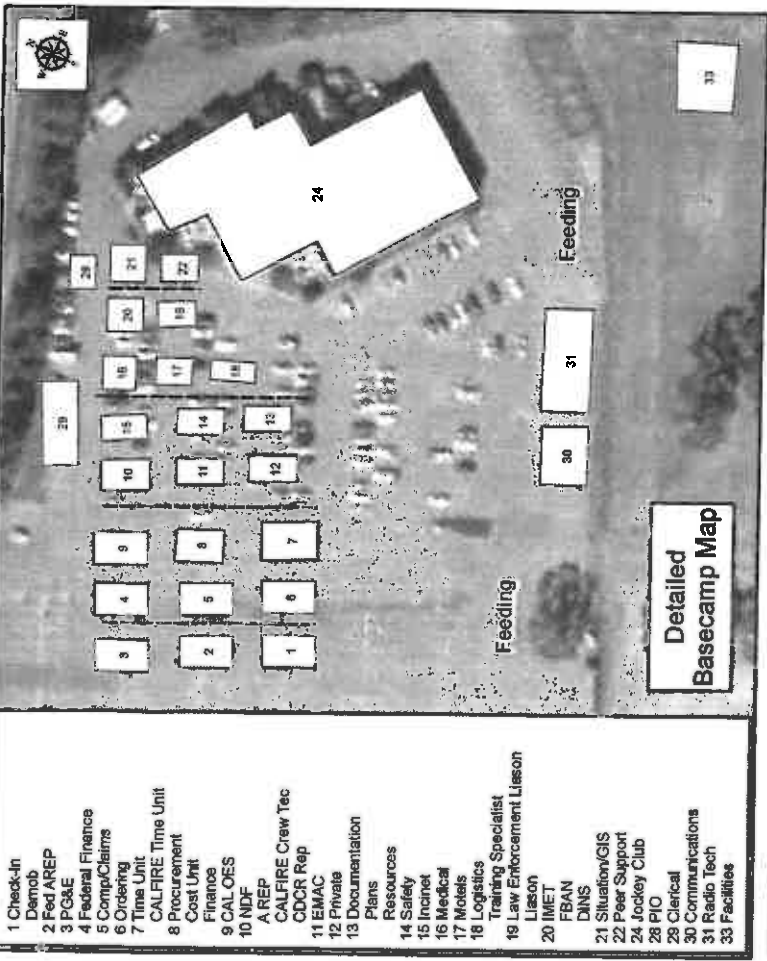
>GIS >Products

> Desired Date > Select desired map

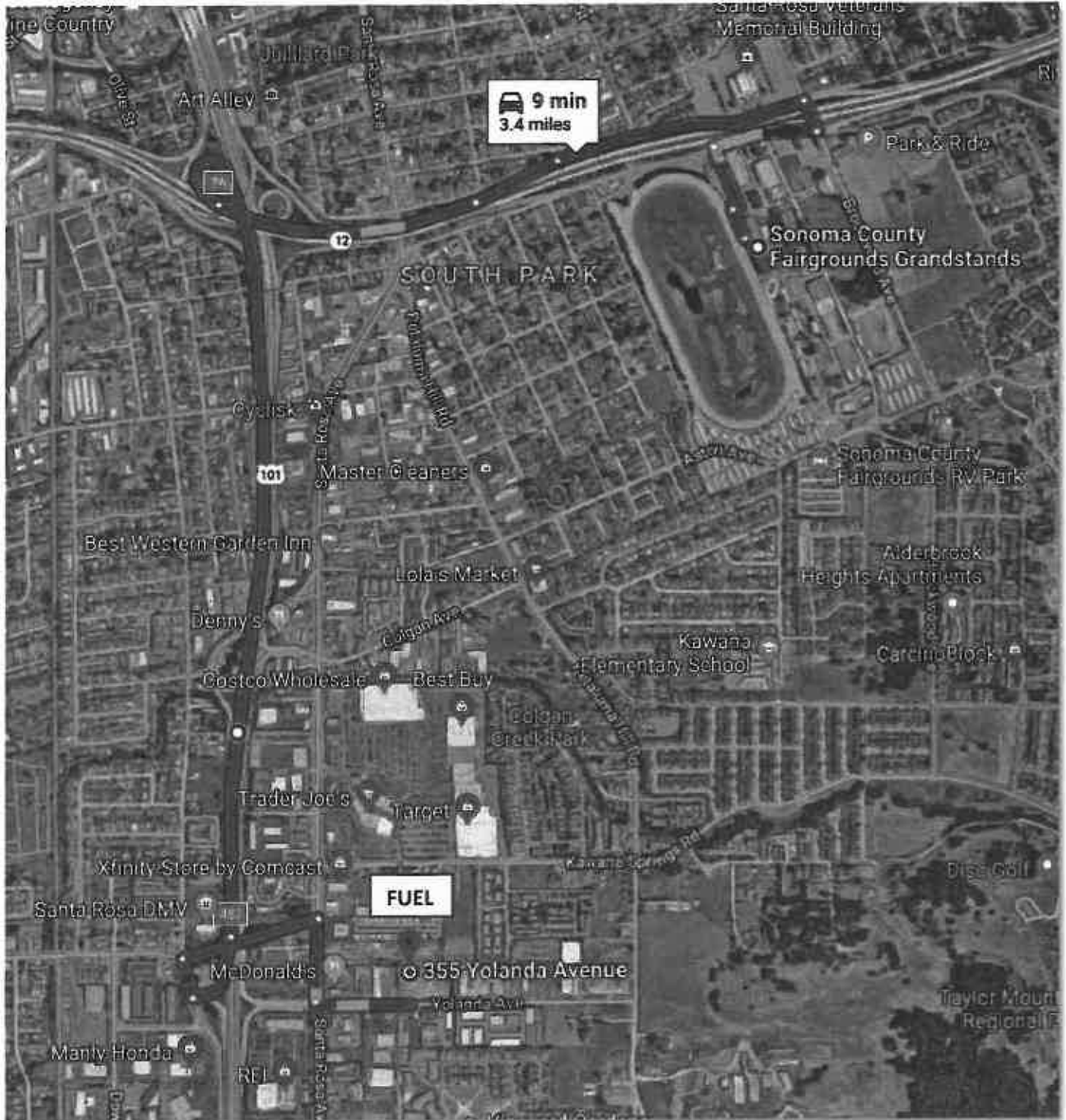
\*Generally, the single most beneficial map to download is the Ops Map



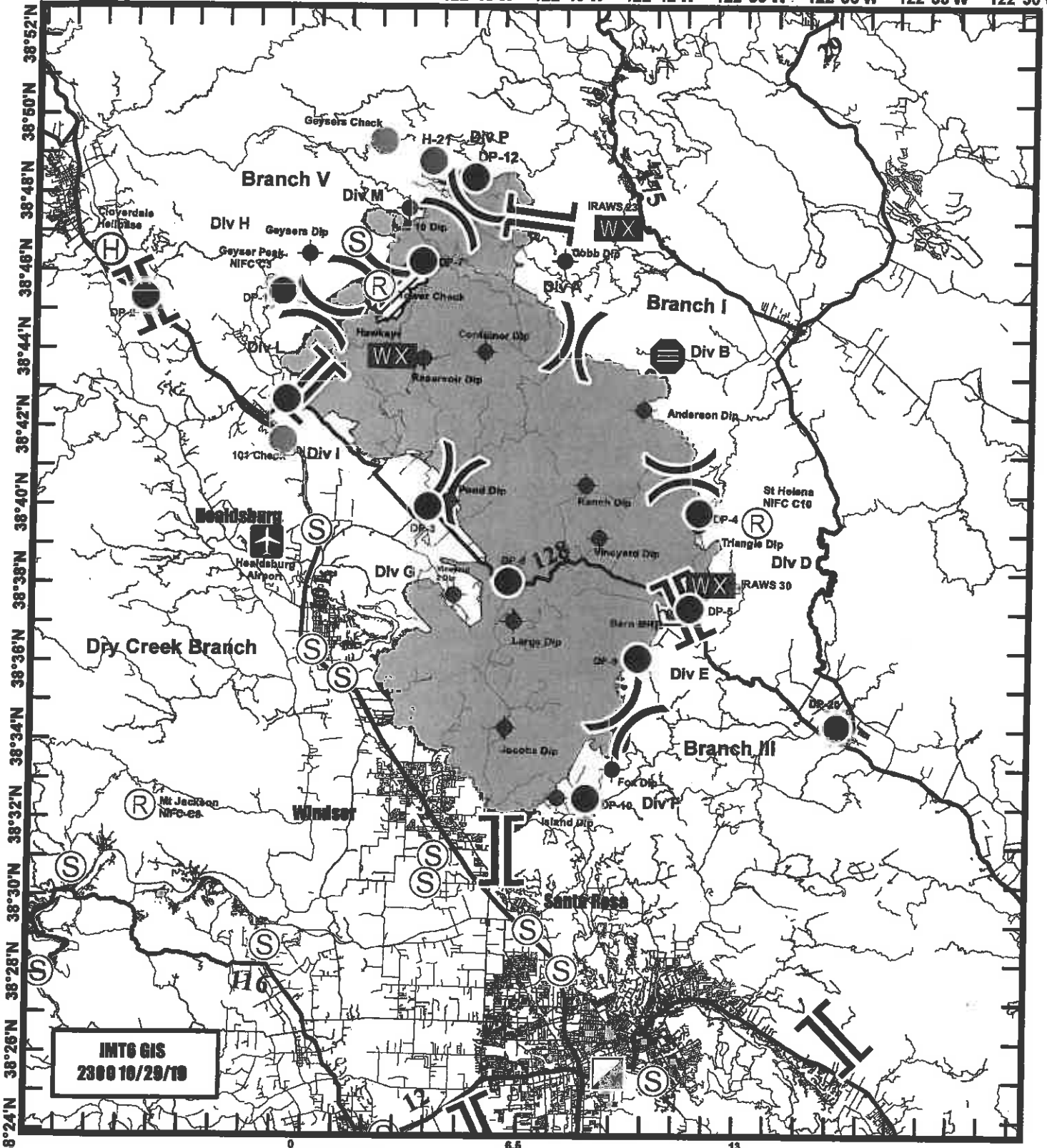
**Basecamp Map**  
 Sonoma County Fairgrounds  
 1350 Bennett Valley Rd



Fuel location and route from ICP (Sonoma County Fairgrounds). Follow route on map.



123°0'W 122°57'W 122°54'W 122°51'W 122°48'W 122°45'W 122°42'W 122°39'W 122°36'W 122°33'W 122°30'W



IMT6 GIS  
2300 10/29/19



**Travel Map**  
**Kincadee Incident**  
**CA-LNU-019376**  
**October 30, 2019**







