

# INCIDENT ACTION PLAN

## BTU/TGU LIGHTNING COMPLEX INCIDENT

CA-BTU-009841

MASTER IAP

Friday



### OPERATIONAL PERIOD

8/21/2020 0700

to


8/22/2020 0700







## ORGANIZATION ASSIGNMENT LIST (ICS 203)

<b>1. Incident Name:</b> BTU/TGU Lightning Complex		<b>2. Operational Period: Date From:</b> 8/21/2020		<b>Date To:</b> 8/22/2020	
		<b>Time From:</b> 0700		<b>Time To:</b> 0700	
<b>3. Incident Commander(s) and Command Staff:</b>			<b>7. Operation Section:</b>		
IC/UC's	Dave Russell	Operations	Shane Lauderdale (Day), Jeremi Roesler (T)		
Deputy	Darryl Laws / Matt Chamblin	Deputy Operations	Smith (Tehama)/ Sjolund (Butte)/ Brown (Glenn)		
Safety Officer	Doug Ferro/ Brent Stangland	Night Ops			
Information Officer	Steve Kaufmann, Chris Harvey (T)	Staging Area			
Liaison Officer	Dave Pender, Ron Karlen (T)				
LELO	Josh Allen, LT. Anthony Bertain	<b>Zone</b>	<b>BUTTE</b>	<b>Garrett Sjolund</b>	
<b>4. Agency/Organization Representatives:</b>		<b>Branch</b>	<b>I</b>	<b>Jason Dyer</b>	
Agency/Organization	Name	Division/Group	AA	Tim Cossone	
		Division/Group	WW		
		Division/Group			
		Division/Group			
		Division/Group			
		Division/Group			
		Division/Group			
		<b>Branch</b>	<b>V</b>		
		Division/Group	FF		
		Division/Group	HH	Jason Finney	
		Division/Group	PP	Mike Conaty	
		Division/Group	SS	Jeff Edson	
		Division/Group			
		Division/Group			
		Division/Group			
		Division/Group			
		<b>Branch</b>	<b>X</b>	<b>Chad Porter</b>	
		Division/Group	GG		
<b>5. Planning Section:</b>		Division/Group			
Chief	Chris Burch	Division/Group			
Deputy	David Shy	Division/Group			
Resource Unit	G. Ozard, C. Dyche, B. Torosian (T), N. Funes (T)	Division/Group			
Situation Unit	D. O'Neil	Division/Group			
Documentation Unit		Division/Group			
Demobilization Unit	Chris Lynch	Division/Group			
GISS	Daniel Dresselhaus	Division/Group			
FBAN	Jonathan Pangburn	Division/Group			
IMET	Jim Wallman	Division/Group			
Training Tech. Spec	Dennis Martin	<b>Air Operations Branch</b>		<b>Director:</b>	<b>Greg Bradshaw</b>
Crew Tech. Spec		Air Support Group Supervisor			
Hired Equip Tech Spec	Tim Bingham	Air Tactical Group Supervisor			
<b>6. Logistics Section</b>		Helibase Manager		Ray Gomez	
Chief	Matt Reich				
Deputy	Mathew Brandt	<b>8. Finance/Administration Section:</b>			
Supply Unit	Shawn Burris	Chief	Mara Zaver		
Facilities Unit	Travis Heard/ Jason Wilson (T)	Time Unit	Greg Tunzi		
Ground Support Unit	Conor Stapleton	Procurement Unit	Courtney Arebalo		
Communications Unit		Comp/Claims Unit	Alyssa Hagerman		
Medical Unit	Leif Juliusen (T)	Cost Unit	Angela Davidson		
<b>Prepared By: Name:</b> David Shy		<b>Position/Title:</b> PSC	<b>Signature:</b> 		
<b>ICS 203</b>		<b>Date/Time:</b> 8/20/2020 2300 hours			



## **Fire and COVID-19 Briefing Checklist**

### **Self-Awareness / Screening**

- Immediately separate yourself from others.
- Notify supervisor if you or others experience:
  - Cough, more than expected
  - Shortness of breath or difficulty breathing
  - New loss of taste or smell
  - Fever
  - Chills
  - Sore throat
  - Muscle pain
- Review and follow crew and division plans to isolate, triage, and transport symptomatic personnel.

### **Hygiene on the Fireline**

- Properly wash or sanitize your hands often, especially before and after eating or entering a public place, and after coughing or sneezing.
- Avoid handshakes and communal use items.
- Maintain a supply of hand sanitizer and hand wipes. Inform supervisor of needed resupply.
- Disinfect high touch surfaces often:
  - Radios, phones, doors, pumps, fuel cans, etc.

### **Social Distancing and Protective Equipment**

- Initiate, practice, and remind others of social distancing.
- Conduct briefings and conversations outdoors and at least 6 feet apart.
- Utilize face coverings as a tool when practical.
- Clean or replace dirty face coverings, equipment, and PPE.

### **Communications**

- Face coverings and social distancing complicate communications. Ensure effective sender/receiver messaging.

### **Protect yourself, your crew, and your camp!**

Find more information: <https://www.nwccg.gov/coronavirus>.



# Fire Weather Forecast – Butte-Tehama-Glenn Lightning 2020



**FORECAST NO: 2**  
**PREDICTION FOR:** Friday-Friday night.  
**SHIFT DATE:** 08/21-22/2020 0700-0700  
**TIME AND DATE**  
**FORECAST ISSUED:** 08/20/2020 2100

**ZONE:** Butte  
**SHIFT**  
**SIGNED:**   
UNIT: CA-BTU  
Jim Wallmann  
Incident Meteorologist

**DISCUSSION:** Winds will be lighter today behind yesterday's cold front. It will remain smoky all day and limit heating, keeping temperatures cooler and winds lighter than would normally occur in this pattern. The smoke will only slightly improve in the afternoon. The pattern remains similar for Friday with the smoke remaining heavy due to other area fires. If in the unlikely chance more clearing occurs, upslope/upvalley winds will be stronger during the afternoon.

## WEATHER FORECAST (TODAY)

**WEATHER:** Mostly sunny with thin smoke. Smoke increases after 1700.

**MAX TEMP:** 1500 feet: 83-87  
4000 feet: 72-77  
**LAL: 1**

**MIN RH:** 1500 feet: 23-27%  
4000 feet: 26-31%  
**CHC WTG RAIN: 0%**

**WIND:** 1500 feet: East 3-6 mph becoming upslope/southwest 5-10 mph with gusts to 15 mph by 1300.  
**(20 FOOT)** 4000 feet: East 4-9 mph becoming upslope/southwest 8-12 mph with gusts to 20 mph by 1400.

**MIXING HEIGHT:** 500 feet rising to 4000 feet around 1400.

**TRANSPORT WIND:** Northeast 5-10 mph becoming southwest 8-12 mph around 1200, then northeast 5-10 mph after 2100.

**VISIBILITY:** 4-6 miles decreasing to 2-3 miles around 1800.

## FORECAST (TONIGHT):

**WEATHER:** Smoky.

**MIN TEMP:** 1500 feet: 70-73  
4000 feet: 63-67  
**LAL: 1**

**MAX RH:** 1500 feet: 44-48%  
4000 feet: 37-41%  
**CHC WTG RAIN: 0%**

**WIND:** 1500 feet: Upslope to 4 mph becoming downslope/northeast 5-10 mph with gusts to 16 mph by 2300.  
**(20 FOOT)** 4000 feet: Upslope to 5 mph becoming downslope/northeast 8-15 mph with gusts to 28 mph by 2300.

**MIXING HEIGHT:** Falling to 500 feet by midnight.

**TRANSPORT WIND:** Northeast 6-12 mph.

**OUTLOOK (SATURDAY/SATURDAY NIGHT):** Smoky with highs 87-91 and lows 70-75. Min RH 15-22% and Max RH 33-40%. Winds upslope 6-12 mph in the late morning and afternoon and downslope 5-10 mph from evening until morning.

## OBSERVATIONS THURSDAY (8/20/2020 – Winds are afternoon conditions):

Cohasset (3713 ft): MAX TEMP: 87. MIN RH: 21%. Winds WSW 4 to 6 mph with gusts to 9 mph.

Jarbo Gap (1029 ft): MAX TEMP: 90. MIN RH: 23%. Winds SW 4 to 6 mph with gusts to 12 mph.

Carpenter Ridge (4816 ft): MAX TEMP: 81. MIN RH: 23.



← SubmitWx/Fire Observations

Nearby RAWS Observations →






# Fire Weather Forecast – Butte-Tehama-Glenn Lightning 2020



**FORECAST NO: 2**  
**PREDICTION FOR:** Friday-Friday night.  
**SHIFT DATE:** 08/21-22/2020 0700-0700  
**TIME AND DATE**  
**FORECAST ISSUED:** 08/20/2020 2100

**ZONE:** Tehama  
**SHIFT**  
**SIGNED:**   
UNIT: CA-TGU  
Jim Wallmann  
Incident Meteorologist

**DISCUSSION:** A bit stronger onshore flow at low levels will increase humidity today. With lighter west flow aloft the southeast winds on the fires in the afternoon will keep more smoke in the area than yesterday. Temperatures will also be slightly cooler due to the smoke and higher humidity. A similar day is expected Saturday with a slight rise in temperatures and lower humidity. Looking ahead, there is the potential for a few thunderstorms Sunday night into Monday.

## WEATHER FORECAST (TODAY)

**WEATHER:** Smoky.

**MAX TEMP:** 1000 feet: 84-88  
3000 feet: 79-83  
**LAL:** 1

**MIN RH:** 1000 feet: 14-18%  
3000 feet: 18-22%  
**CHC WTG RAIN:** 0%

**WIND:** West 4-8 mph becoming southeast by 1100, then west 6-12 mph with gusts to 20 mph after 1800.  
**(20 FOOT)**

**MIXING HEIGHT:** 500 feet rising to 2000 feet around 1400.

**TRANSPORT WIND:** Becoming southeast 5-10 mph by 1100 then west around 10 mph after 1800.

**VISIBILITY:** 1-3 miles.

## FORECAST (TONIGHT):

**WEATHER:** Smoky.

**MIN TEMP:** 1000 feet: 70-73  
3000 feet: 65-69  
**LAL:** 1

**MAX RH:** 1000 feet: 29-35%  
3000 feet: 33-40%  
**CHC WTG RAIN:** 0%

**WIND:** West 6-12 mph with gusts to 20 mph diminishing to 4-8 mph around midnight.  
**(20 FOOT)**

**MIXING HEIGHT:** Falling to 200 feet by 2100.

**TRANSPORT WIND:** West 5-10 mph.

**OUTLOOK (SATURDAY/SATURDAY NIGHT):** Smoky with highs 85-89 and lows 70-75. Min RH 12-19% and Max RH 25-30%. Winds becoming southeast 5-10 mph in the morning then west 6-12 mph with gusts to 20 mph in the evening.

## OBSERVATIONS THURSDAY (8/20/2020 – Winds are afternoon conditions):

Eagle Peak (3713 ft): MAX TEMP: 83. MIN RH: 10%. Winds NNW 4 to 6 mph with gusts to 11 mph.

Thomes Creek (1029 ft): MAX TEMP: 87. MIN RH: 9%. Winds S 3 to 5 mph with gusts to 9 mph.

← SubmitWx/Fire Observations

Nearby RAWS Observations →








# Fire Weather Forecast – Butte-Tehama-Glenn Lightning 2020



**FORECAST NO: 2**  
**PREDICTION FOR:** Friday-Friday night  
**SHIFT DATE:** 08/21-22/2020 0700-0700  
**TIME AND DATE**  
**FORECAST ISSUED:** 08/20/2020 2100

**ZONE:** Glenn  
**SHIFT**  
**SIGNED:**   
UNIT: CA-TGU  
Jim Wallmann  
Incident Meteorologist

**DISCUSSION:** A bit stronger onshore flow at low levels will increase humidity today. With lighter west flow aloft the southeast winds on the fires in the afternoon will keep more smoke in the area than yesterday. Temperatures will also be slightly cooler due to the smoke and higher humidity. A similar day is expected Saturday with a slight rise in temperatures and lower humidity. Looking ahead, there is the potential for a few thunderstorms Sunday night into Monday.

## WEATHER FORECAST (TODAY)

**WEATHER:** Smoky.

**MAX TEMP:** 1000 feet: 81-85  
3000 feet: 76-80  
**LAL:** 1

**MIN RH:** 1000 feet: 18-23%  
3000 feet: 20-26%  
**CHC WTG RAIN:** 0%

**WIND:** West 4-8 mph becoming southeast by 1100, then west 6-12 mph with gusts to 20 mph after 1800.  
**(20 FOOT)**

**MIXING HEIGHT:** 500 feet rising to 2000 feet around 1400.

**TRANSPORT WIND:** Becoming southeast 5-10 mph by 1100 then west around 10 mph after 1800.

**VISIBILITY:** 1-3 miles.

## FORECAST (TONIGHT):

**WEATHER:** Smoky.

**MIN TEMP:** 1000 feet: 70-73  
3000 feet: 65-69  
**LAL:** 1

**MAX RH:** 1000 feet: 33-38%  
3000 feet: 37-43%  
**CHC WTG RAIN:** 0%

**WIND:** West 6-12 mph with gusts to 20 mph diminishing to 4-8 mph around midnight.  
**(20 FOOT)**

**MIXING HEIGHT:** Falling to 200 feet by 2100.

**TRANSPORT WIND:** West 5-10 mph.

**OUTLOOK (SATURDAY/SATURDAY NIGHT):** Smoky with highs 85-89 and lows 70-75. Min RH 16-21% and Max RH 30-35%. Winds becoming southeast 5-10 mph in the morning then west 6-12 mph with gusts to 20 mph in the evening.

## OBSERVATIONS THURSDAY (8/20/2020 – Winds are afternoon conditions):

Eagle Peak (3713 ft): MAX TEMP: 83. MIN RH: 10%. Winds NNW 4 to 6 mph with gusts to 11 mph.

Thomes Creek (1029 ft): MAX TEMP: 87. MIN RH: 9%. Winds S 3 to 5 mph with gusts to 9 mph.

← SubmitWx/Fire Observations

Nearby RAWS Observations →



# FIRE BEHAVIOR FORECAST

<b>FORECAST NUMBER: 3</b>	<b>TYPE OF FIRE: Wildland Fire</b>
<b>FIRE NAME: BTU/TGU Lightning Complex</b>	<b>OPERATIONAL PERIOD: 24hr 8/21 (0700-0700)</b>
<b>DATE ISSUED: 8/20/2020</b>	<b>TIME ISSUED: 1800</b>
<b>UNIT: BTU</b>	<b>SIGNED: Jonathan Pangburn, FBAN</b> <i>[Signature]</i>

## INPUTS

**WEATHER SUMMARY**                      **\*\*LIGHTER WIND, LOW RH\*\***  
See Weather Forecast in IAP.

## OUTPUTS

**GENERAL:**                                      **BUTTE ZONE**  
1,000-hr dead fuel moisture at 90<sup>th</sup>-97<sup>th</sup> percentile. Severe Drought conditions. Rapid growth and spotting with slope/wind alignment. Brush highly receptive to burning. Lower elevation reduced fire behavior with smoke shading out fuels, moderate to rapid rates of spread in clear skies, especially above 2,000 ft.

In the absence of weather conditions outside the forecast or extreme fire behavior conditions expect:

	Max. Flame Length	Max. Rate of Spread	Spotting	Probability of Ignition
Grass	< 7' (2 m)	65 ch/hr (1.3 km/hr)	< 1/3 mile (4 km)	85% (with clear sky)
Grass/Shrub Mix	< 8' (2 m)	40 ch/hr (0.8 km/hr)	< 1/3 mile (4 km)	85% (with clear sky)
Shrub	< 20' (6 m)	95 ch/hr (1.9 km/hr)	< 1/3 mile (4 km)	85% (with clear sky)
Timber Understory	< 10' (3 m)	45 ch/hr (0.9 km/hr)	< 1/3 mile (4 km)	85% (with clear sky)
Timber Litter	< 2' (0.6 m)	5 ch/hr (0.1 km/hr)	< 1/3 mile (4 km)	85% (with clear sky)

**\*\*minimum safety zone size for brush fuels is 1/2-acre (0.2 Ha) for a Strike Team of Engines.**  
**\*\*minimum safety zone size for timber fuels is 1/3-acre (0.1 Ha) for a Strike Team of Engines.**

### SPECIFIC:

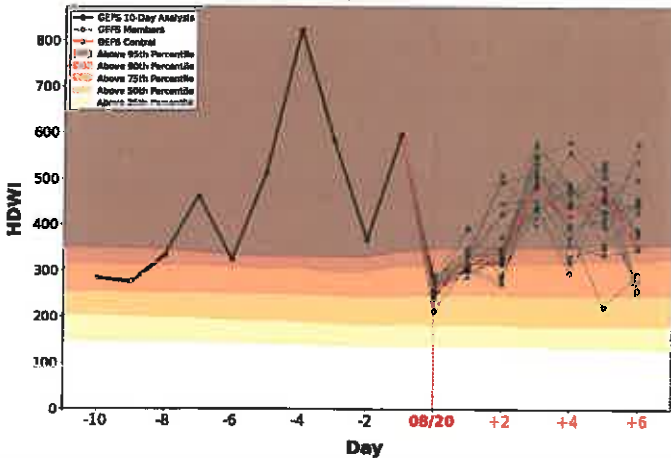
Areas considered dormant may flare with afternoon winds. Butte Creek drainage will see wind channeling and up canyon runs. Timber understory and litter.

Expect rapid rates of spread in grass fuels wherever torching and ember cast is seen.

New starts will see rapid growth and establishment. Hot Dry Windy Index well above 95<sup>th</sup> percentile in timber

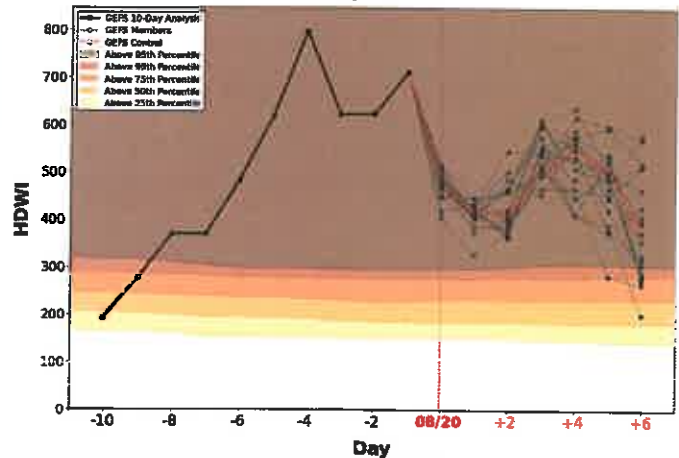
#### Butte Foothills Max Daily HDWI

GEFS Analysis and Forecast & 1981-2010 CFSR Climatology  
39.5°N, 121.5°W



#### Butte Timber Max Daily HDWI

GEFS Analysis and Forecast & 1981-2010 CFSR Climatology  
40.0°N, 121.5°W



### AIR OPERATIONS:

Expect smoky conditions in Butte Zone below 2,000 ft. Mostly clear skies above with afternoon & evening cross winds.

Mixing height: 4,000 ft. AGL where clear, Transport winds: SW 5-10 mph, Sunrise 0624, Sunset 1955.

### SAFETY

Intense fire runs are possible. Make sure you know where your safety zone is & the time it takes to get there.

# FIRE BEHAVIOR FORECAST

<b>FORECAST NUMBER:</b> 3	<b>TYPE OF FIRE:</b> Wildland Fire
<b>FIRE NAME:</b> BTU/TGU Lightning Complex	<b>OPERATIONAL PERIOD:</b> 24hr 8/21 (0700-0700)
<b>DATE ISSUED:</b> 8/20/2020	<b>TIME ISSUED:</b> 1800
<b>UNIT:</b> TGU	<b>SIGNED:</b> Jonathan Pangburn, FBAN

## INPUTS

**WEATHER SUMMARY**      **\*\*SMOKE & HAZE, LIGHTER WIND, LOW RH\*\***  
See Weather Forecast in IAP.

## OUTPUTS

**GENERAL:**      **TEHAMA-GLENN ZONES**  
1,000-hr dead fuel moisture at 97<sup>th</sup> percentile. Severe Drought conditions. Rapid growth and spotting with slope/wind alignment. Brush highly receptive to burning. Glenn Zone reduced fire behavior with smoke shading out fuels; Tehama moderate to rapid rates of spread & fuel dominated fire.

In the absence of weather conditions outside the forecast or extreme fire behavior conditions expect:

	Max. Flame Length	Max. Rate of Spread	Spotting	Probability of Ignition
Grass	< 7' (2 m)	65 ch/hr (1.3 km/hr)	< 1/3 mile (4 km)	85% (with clear sky)
Grass/Shrub Mix	< 8' (2 m)	40 ch/hr (0.8 km/hr)	< 1/3 mile (4 km)	85% (with clear sky)
Shrub	< 20' (6 m)	95 ch/hr (1.9 km/hr)	< 1/3 mile (4 km)	85% (with clear sky)
Timber Understory	< 10' (3 m)	45 ch/hr (0.9 km/hr)	< 1/3 mile (4 km)	85% (with clear sky)
Timber Litter	< 2' (0.6 m)	5 ch/hr (0.1 km/hr)	< 1/3 mile (4 km)	85% (with clear sky)

**\*\*minimum safety zone size for brush fuels is 1/2-acre (0.2 Ha) for a Strike Team of Engines.**  
**\*\*minimum safety zone size for timber fuels is 1/3-acre (0.1 Ha) for a Strike Team of Engines.**

### SPECIFIC:

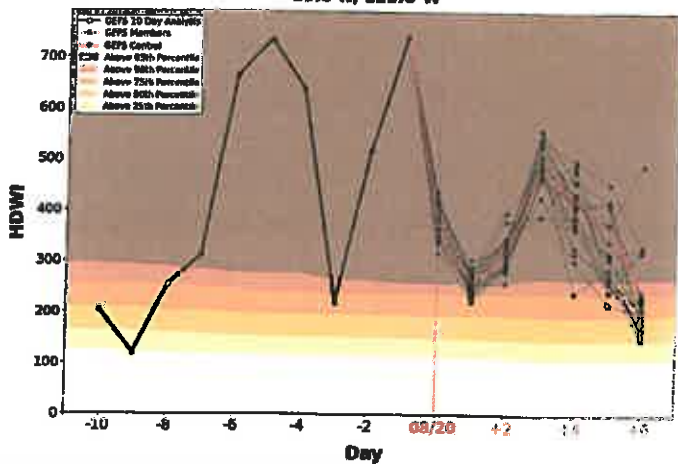
Areas considered dormant may flare with afternoon winds. Anticipate Elkhorn fire spread in all directions.

Expect rapid rates of spread in grass fuels wherever torching and ember cast is seen.

New starts will see rapid growth and establishment. Hot Dry Windy Index well above 95<sup>th</sup> percentile in timber

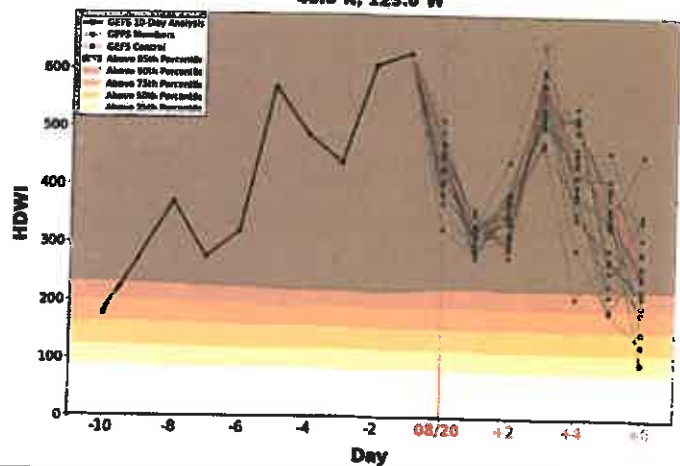
**Glenn Zone  
Max Daily HDWI**

GEFS Analysis and Forecast & 1981-2010 CFSR Climatology  
39.0°N, 123.0°W



**Tehama Zone  
Max Daily HDWI**

GEFS Analysis and Forecast & 1981-2010 CFSR Climatology  
40.0°N, 123.0°W



### AIR OPERATIONS:

Expect smoky conditions with afternoon cross winds in Glenn & Tehama Zones.

Mixing height: 2,000 ft. AGL where clear, Transport winds: SE 5-10 mph, Sunrise 0628, Sunset 1959.

### SAFETY

Intense fire runs are possible. Make sure you know where your safety zone is & the time it takes to get there.













# ASSIGNMENT LIST (ICS 204 WF)

CONTROLLED UNCLASSIFIED  
INFORMATION//BASIC

<b>1. Incident Name:</b> <b>BTU/TGU Lightning Complex</b>	<b>2. Operational Period:</b> Date From: 08/21/20    Date To: 08/22/20 Time From: 0700    Time To: 0700	<b>3. Branch</b> <b>Division</b>  <b>V</b> <b>SS</b>
--	---	--

<b>4. Operations Personnel:</b>		<b>Page 1 of 1</b> <b>Sierra-Sierra</b>
Operations Section Chief: <b>Shane Lauderdale (Day), Jeremi Roesler (T)</b>	Deputy Ops: <b>Garrett Sjolund (Butte Zone)</b>	
Branch Director:	Branch Safety:	
Division/Group Supervisor: <b>Mike Conaty</b>	Air Attack:	

<b>5. Resources Assigned:</b>		<b>** Resources Below in Bold are 12 Hour **</b>					
Resource Identifier	ALS	LWD	Leader	Personnel	Request #	Hours	Reporting Location
<b>STC XSU 3225C</b>			<b>EPPERSON, RICHARD</b>	18 +/-	E-1-BTU LIGHT	<b>0700-1900</b>	
<b>ENG3 BTU 2163</b>					E-112-BTU LIGHT	<b>0700-1900</b>	
<b>ENG3 BTU 2182</b>					E-113-BTU LIGHT	<b>0700-1900</b>	
<b>ENG2 BTC 44</b>					E-118-BTU LIGHT	<b>0700-1900</b>	
<b>ENG BTC E55</b>						<b>0700-1900</b>	
<b>ENG2 BTC 63</b>					E-117-BTU LIGHT	<b>0700-1900</b>	
<b>ENG3 PRA 382</b>					E-106-BTU LIGHT	<b>0700-1900</b>	
<b>CRW2 C-13 FUELS 2149</b>				16 +/-	C-13-BTU LIGHT	<b>0700-1900</b>	
W/T1 OES WT-31					E-126-BTU LIGHT	0700-0700	
W/T PVT E-13-PRODUMP					E-13-POTTERS	0700-0700	
W/T PVT E-15 -DAVIS					E-15-POTTERS	0700-0700	
W/T PVT E-16					E-19-POTTERS	0700-0700	

**6. Work Assignments:**  
 Identify all fires with GPS location, fire size, handline needs, and percentage of containment.  
 Mop up 100'. Cut and improve line where needed.  
 Backhaul trash.

**7. Special Instructions:**  
 No designated Safety Officers and no designated Line Medics. These positions are typically associated with team deployments however with resource draw down they are unavailable.  
 Strike Team Leaders identify Safety Officer and Line Medic qualification and make them known to your Division Supervisor.

**8. Communications**

Name	Ch	Function	Rx Freq	Rx Tone	Tx Freq	Tx Tone	Notes
CDF C1	1	COMMAND	151.3550 N	103.5 (T8 )	159.3000 N	131.8 (T3)	BLOOMER MTN
VFIRE 23	7	TACTICAL	154.2950 N	156.7 (T6)	154.2950 N	156.7 (T6)	BRANCH V
CDF T18	14	AIR TO GROUND	159.3450 N	192.8 (T16)	159.3450 N	192.8 (T16)	
CALCORD	15	MEDICAL	156.0750 N	T56.7 (T6)	156.0750 N	156.7 (T6)	
AIRGUARD V1	16	AIRGUARD	168.6250 N		168.6250 N	110.9 (T1)	

<b>9. Prepared by: Name:</b>	Gwyndolyn Ozard	RESL	Signature:
ICS 204	Date/Time: 8/20/2020 2200	Personnel Count: 34	

# ASSIGNMENT LIST (ICS 204 WF)

CONTROLLED UNCLASSIFIED  
INFORMATION//BASIC

<b>1. Incident Name:</b> <b>BTU/TGU Lightning Complex</b>	<b>2. Operational Period:</b> Date From: 08/21/20    Date To: 08/22/20 Time From: 0700    Time To: 0700	<b>3. Branch</b> <b>Division</b>  <b>X</b> <b>GG</b>
--	---	--

**4. Operations Personnel:**    Page 1 of 1    **Golf-Golf**

Operations Section Chief: <b>Shane Lauderdale (Day), Jeremi Roesler (T)</b>	Deputy Ops: <b>Garrett Sjolund (Butte Zone)</b>
Branch Director: <b>Chad Porter</b>	Branch Safety:
Division/Group Supervisor:	Air Attack:

5. Resources Assigned:	** Resources Below In Bold are 12 Hour **							
Resource Identifier	ALS	LWD	Leader	Personnel	Request #	Hours	Reporting Location	
<b>SHU T/F 01</b>					E-52-BTU LIGHT	<b>0700-1900</b>		
<b>CNR T/F 02</b>					E-18-BTU LIGHT	<b>0700-1900</b>		
<b>ENG3 BTU 2167</b>					E-108-BTU LIGHT	<b>0700-1900</b>		
<b>ENG3 BTU 2181</b>					E-114-BTU LIGHT	<b>0700-1900</b>		
<b>ENG3 BTC 366</b>					E-116-BTU LIGHT	<b>0700-1900</b>		
<b>ENG3 GRD 376</b>					E-115-BTU LIGHT	<b>0700-1900</b>		
<b>ENG3 PNF E330</b>						<b>0700-1900</b>		
<b>ENG6 BTC 664</b>					E-121-BTU LIGHT	<b>0700-1900</b>		
<b>DOZ PVT E-5 - DIAMOND</b>					E-5-BTU LIGHT	<b>0700-0700</b>		
<b>W/T1 EMD 3</b>					E-129-BTU LIGHT	<b>0700-0700</b>		
<b>W/T1 BTC 52</b>					E-128-BTU LIGHT	<b>0700-0700</b>		
<b>W/T1 BTC 64</b>					E-131-BTU LIGHT	<b>0700-0700</b>		
<b>W/T1 BTC 67</b>					E-127-BTU LIGHT	<b>0700-0700</b>		
<b>W/T1 PVT E-18 - MARYMEE</b>					E-18-POTTERS	<b>0700-0700</b>		
<b>W/T1 PVT E-23 - TWO BROTHER</b>					E-23-BTU LIGHT	<b>0700-0700</b>		
<b>W/T1 PVT E-24 - COLEMAN</b>					E-24-BTU LIGHT	<b>0700-0700</b>		
<b>W/T PVT E-82</b>						<b>0700-0700</b>		
<b>FALM Matney</b>			<b>Matney</b>		<b>O-35-BTU LIGHT</b>	<b>0700-1900</b>		

**6. Work Assignments:**  
 Identify all fires with GPS location, fire size, handline needs, and percentage of containment.  
 Mop up 100'. Cut and improve line where needed.  
 Backhaul trash.

**7. Special Instructions:**  
 No designated Safety Officers and no designated Line Medics. These positions are typically associated with team deployments however with resource draw down they are unavailable.  
 Strike Team Leaders identify Safety Officer and Line Medic qualification and make them known to your Division Supervisor.

**8. Communications**

Name	Ch	Function	Rx Freq	Rx Tone	Tx Freq	Tx Tone	Notes
CDF C1	1	COMMAND	151.3550 N	103.5 (T8)	159.3000 N	131.8 (T3)	BLOOMER MTN
CDF T24	3	TACTICAL	151.3325 N	192.8 (T16)	151.3325 N	192.8 (T16)	BRANCH I/X
CDF T18	14	AIR TO GROUND	159.3450 N	192.8 (T16)	159.3450 N	192.8 (T16)	
CALCORD	15	MEDICAL	156.0750 N	T56.7 (T6)	156.0750 N	156.7 (T6)	
AIRGUARD V1	16	AIRGUARD	168.6250 N		168.6250 N	110.9 (T1)	

**9. Prepared by: Name:**    Gwyndolyn Ozard    RESL    Signature:

ICS 204    Date/Time: 8/20/2020    2200    Personnel Count: 0























# ASSIGNMENT LIST (ICS 204 WF)

CONTROLLED UNCLASSIFIED  
INFORMATION/BASIC

<b>1. Incident Name:</b> <b>BTU/TGU Lightning Complex</b>	<b>2. Operational Period:</b> Date From: 08/21/20    Date To: 08/22/20 Time From: 0700            Time To: 0700	<b>3. Branch</b> <b>Division</b>  <b>XX</b> <b>BB/CC</b>
--	---	--

<b>4. Operations Personnel:</b>		Page 1 of 1
Operations Section Chief: <b>Shane Lauderdale (Day), Jeremi Roesler (T)</b>	Deputy Ops: <b>Mark Brown (Glenn Zone)</b>	
Branch Director: <b>Todd Horton</b>	Branch Safety:	
Division/Group Supervisor:	Air Attack:	

<b>5. Resources Assigned:</b>		** Resources Below in Bold are 12 Hour **					
Resource Identifier	ALS	LWD	Leader	Personnel	Request #	Hours	Reporting Location
CNR T/F 05					E-46-TGU BAT 4	0700-0700	DP22 (Elk Creek FS)
ENG TGU 2554					E-8-TGU BAT 4	0700-0700	DP22 (Elk Creek FS)
ENG3 WLO 16					E-15-TGU BAT 4	0700-0700	DP22 (Elk Creek FS)
ENG ORL 31					E-49-TGU BAT 4	0700-0700	DP22 (Elk Creek FS)
ENG3 ELK 59					E-14-TGU BAT 4	0700-0700	DP22 (Elk Creek FS)
ENG3 HAM 5105					E-13-TGU BAT 4	0700-0700	DP22 (Elk Creek FS)
CRW SALT CREEK 4				16 +/-	C-2-TGU BAT 4	0700-0700	DP22 (Elk Creek FS)
DOZ PVT E-34 - MILLER					E-34-TGU BAT 4	0700-0700	DP22 (Elk Creek FS)
W/T PVT E-2 - COOK					E-2-TGU BAT 4	0700-0700	DP22 (Elk Creek FS)
W/T PVT E-3 - LENAHAN'S					E-3-TGU BAT 4	0700-0700	DP22 (Elk Creek FS)
W/T PVT E-4 - LENAHAN'S					E-4-TGU BAT 4	0700-0700	DP22 (Elk Creek FS)
W/T2 PVT E-42 - M & C					E-42-TGU BAT 4	0700-0700	DP22 (Elk Creek FS)

**6. Work Assignments:**  
 Hold and improve control lines to mitigate threat of fire escaping.  
 Mop up 100'. Cut and improve line where needed.  
 Construct line from DIV BB/CC to August Lightning Complex.

**7. Special Instructions:**  
 No designated Safety Officers and no designated Line Medics. These positions are typically associated with team deployments however with resource draw down they are unavailable.  
 Strike Team Leaders identify Safety Officer and Line Medic qualification and make them known to your Division Supervisor.

**8. Communications**

Name	Ch	Function	Rx Freq	Rx Tone	Tx Freq	Tx Tone	Notes
CDF C7	1	COMMAND	151.4600 N	103.5 (T8)	159.3900 N	110.9 (T1)	
CDF T28	7	TACTICAL	151.1825 N	192.8 (T16)	151.1825 N	192.8 (T16)	
CDF T15	14	AIR TO GROUND	159.2700 N	192.8 (T16)	159.2700 N	192.8 (T16)	
CALCORD	15	MEDICAL	156.0750 N	T56.7 (T6)	156.0750 N	156.7 (T6)	
AIRGUARD V1	16	AIRGUARD	168.6250 N		168.6250 N	110.9 (T1)	

<b>9. Prepared by: Name:</b>	Gwyndolyn Ozard	RESL	Signature:
ICS 204	Date/Time: 8/20/2020 2200	Personnel Count: 16	



# ASSIGNMENT LIST (ICS 204 WF)

CONTROLLED UNCLASSIFIED  
INFORMATION/BASIC

<b>1. Incident Name:</b> <b>BTU/TGU Lightning Complex</b>	<b>2. Operational Period:</b> Date From: 08/21/20    Date To: 08/22/20 Time From: 0700    Time To: 0700	<b>3. Branch</b> <b>Division</b> <b>XXV</b> <b>WW</b>
--	---	--

<b>4. Operations Personnel:</b>		Page 1 of 1    Whiskey-Whiskey
Operations Section Chief: <b>Shane Lauderdale (Day), Jeremi Roesler (T)</b>		Deputy Ops: <b>Mark Brown (Glenn Zone)</b>
Branch Director: <b>Ethan Darnall</b>		Branch Safety:
Division/Group Supervisor: <b>Luke Stacher</b>		Air Attack:

5. Resources Assigned:	** Resources Below in Bold are 12 Hour **						
Resource Identifier	ALS	LWD	Leader	Personnel	Request #	Hours	Reporting Location
ENG TGU 2560					E-7-TGU BAT 4	0700-0700	DP25 (Paskenta FS)
ENG3 TGU 2564					E-27-TGU BAT 4	0700-0700	DP25 (Paskenta FS)
ENG3 TGU 2574					E-10-TGU BAT 4	0700-0700	DP25 (Paskenta FS)
CRW VALLEY VIEW 1				16 +/-	C-3-TGU BAT 4	0700-0700	DP25 (Paskenta FS)
CRW VALLEY VIEW 5				16 +/-	C-4-TGU BAT 4	0700-0700	DP25 (Paskenta FS)
DOZ TGU 2544					E-33-TGU BAT 4	0700-0700	DP25 (Paskenta FS)
DOZ PVT Tehama 2						0700-0700	DP25 (Paskenta FS)
DOZ PVT Tehama 3						0700-0700	DP25 (Paskenta FS)
DOZ PVT E-1 - COOK					E-1-TGU BAT 4	0700-0700	DP25 (Paskenta FS)
DOZ PVT E-35 - SCHREDER					E-35-TGU BAT 4	0700-0700	DP25 (Paskenta FS)
DOZ PVT E-36 - DAVIS					E-36-TGU BAT 4	0700-0700	DP25 (Paskenta FS)
DOZ PVT E-40 - SUNRISE					E-40-TGU BAT 4	0700-0700	DP25 (Paskenta FS)
W/T PVT E-32 - TURRI					E-32-TGU BAT 4	0700-0700	DP25 (Paskenta FS)
W/T1 PVT E-43 - ACT FAST					E-43-TGU BAT 4	0700-0700	DP25 (Paskenta FS)

**6. Work Assignments:**  
 Construct Contingency Line from Pellows Road to Elder Creek.  
 Construct Safety Islands.  
 Prepare structures for defensive actions along Pellows Road, Pryor Road, and Kelley Road.  
 Scout Fire/Branch/Division to validate Control Lines, Division Breaks, and Branch Breaks.

**7. Special Instructions:**  
 No designated Safety Officers and no designated Line Medics. These positions are typically associated with team deployments however with resource draw down they are unavailable.  
 Strike Team Leaders identify Safety Officer and Line Medic qualification and make them known to your Division Supervisor.

8. Communications							
Name	Ch	Function	Rx Freq	Rx Tone	Tx Freq	Tx Tone	Notes
CDF C7	1	COMMAND	151.4600 N	103.5 (T8 )	159.3900 N	110.9 (T1)	
CDF T29	4	TACTICAL	151.3475 N	192.8 (T16)	151.3475 N	192.8 (T16)	BRANCH I
CDF T15	14	AIR TO GROUND	159.2700 N	192.8 (T16)	159.2700 N	192.8 (T16)	
CALCORD	15	MEDICAL	156.0750 N	T56.7 (T6)	156.0750 N	156.7 (T6)	
AIRGUARD V1	16	AIRGUARD	168.6250 N		168.6250 N	110.9 (T1)	

**9. Prepared by: Name:** Gwyndolyn Ozard    RESL  
 Signature: *Gwyndolyn Ozard*  
 Date/Time: 8/20/2020 2200    Personnel Count: 32



# SAFETY MESSAGE

## BTU TGU Lightning Complex

August 21, 2020 0700-0700 CA-BTU-009692



S  
A  
F  
E  
T  
Y

S  
A  
F  
E  
T  
Y

S  
A  
F  
E  
T  
Y

E  
V  
E  
R  
Y  
O  
N  
E

R  
E  
S  
P  
O  
N  
S  
I  
B  
I  
L  
I  
T  
Y

### GENERAL ILLNESS

**FATIGUE, HOT WEATHER, HARD EXHAUSTIVE WORK PUTS US AT RISK**

#### Watch Out

- **Hot weather** causes dehydration, heat exhaustion and serious medical emergencies
- **Hard exhaustive work** increases core temperature, weakens the body's ability to function healthy and causes fatigue
- **Fatigue** Causes poor judgement and decreased work performance affecting safety

#### Mitigation

- Rest and water hydration reduces fatigue and exhaustion emergencies
- Drink plenty of water and eat right– **START EARLY** – reduce caffeine input take breaks throughout the work-period and take measures to cool down
- Reduced Caloric intake can contribute to Fatigue and potentially Rhabdomyolysis

### UNDERSTANDING THE PLAN

**Multiple Agencies Working in Coordination**

#### Watch Out

- Operational briefing not being passed down to lowest level
- Objectives not clear
- Lack of participation at briefings

#### Mitigations

- Leaders hold the responsibility to provide complete briefings and ensure their subordinates have a clear understanding of the plans intent
- All personnel who have not received a briefing shall notify their direct supervisor prior to engaging
- Supervisors will ensure briefings are attended and personnel understand their role

### Chainsaw Felling Accidents

**IDENTIFY HAZARDS / WORK WITHIN QUALIFICATION / CONSIDER ALTERNATIVES**

- Tree hang-ups account for 25% of felling fatalities. When a tree you are working on becomes a hang-up, reconsider the risks to personnel safety and consider alternatives and mitigations.
- Are you qualified and confident with felling assignment?
- All sawyers have the authority to decline a felling assignment if they feel it is unsafe. Or if the assignment exceeds their training, qualification or experience.
- Consider alternatives to felling hazard trees.
  - Utilize heavy equipment to remove the hazard
  - Restrict access
  - Notify and Utilize signs/flagging to communicate the hazard
- Bucking operations can also be hazardous. Alternatives can also be used for bucking operations (e.g. use mitigation measures to restrict access, use heavy equipment, decline assignment if here are no mitigations).




**REMAIN FIRE FOCUSED AND COVID-19 AWARE**





# INCIDENT ACTION PLAN SAFETY ANALYSIS (ICS 215A)



<b>1. Incident Name:</b> Tehama Glen Zone		<b>2. Incident Number:</b> 20-CA-TGU-
<b>3. Date/Time Prepared:</b> Date: 08/20/2020 Time: 1700 hours		<b>4. Operational Period:</b> Date From: 08/21/2020 To: 08/22/2020 Time From: 0700 hours To: 0700 hours
<b>5. Incident Area</b>	<b>6. Hazards/Risks</b>	<b>7. Mitigations</b>
ALL	Fatigue – physical and mental	Continually monitor your crew. Know the signs and symptoms of heat illness. Plan for a 2-1 Work Rest Work Cycle
ALL	Narrow roadways – extended distances to lodging; passing on undivided highways; slow moving truck traffic; low visibility from dust	Turn lights on, observe speed limits and expect vehicles opposing traffic. Plan for extended travel times.
ALL	Dehydration / Rhabdomyolysis	With the long operational shifts and high humidity's, maintain your crews water and caloric intake regimen.
ALL	Working around heavy equipment	Maintain eye-to-eye contact with the operator. Have fire suppression support when operating in dry fuels.
ALL	Poor communications	Review ICS 205 and ensure radio clone is current.
ALL	Steep, unstable terrain	Watch footing and maintain downhill tool placement. Be aware of loose material. Look for ash pits and stump holes.
ALL	Unburned areas	LCES - utilize worst case scenario when working in or around pockets of unburned fuels.
ALL	Hazardous Trees	IRPG Pg 22: Identify and Flag Hazardous Trees. Eliminate hazardous trees with qualified sawyers or heavy equipment.
ALL	Personal Protective Equipment (PPE)	Wear appropriate PPE for all operations until your supervisor indicates its safe to remove.
ALL	Highway 99/32 CAL TRANS Be aware of logging trucks working in the area	Drive slow through the construction areas. Expect delays along Hwy 99.
ALL	COVID-19: Reduce exposure potential to yourself, your crew and the public	<u>Wear a mask</u> while in the ICP, while feeding and with the public, and when six feet of social distancing is difficult. Wash hands for at least 20-seconds.
ALL	Helicopters - Water Drops and Turbulence	Post lookouts and make escape routes and safety zones know. LCES. Watch overhead for hazard trees and wind changes.
Ground Support	Personnel and vehicles moving around one another in tight areas	Chock wheels. Use spotters and backers. Follow mechanic direction.
<b>8. Prepared by (Safety Officer):</b> Name: Douglas M Ferro		Signature: 
<b>Prepared by (Deputy Operations Section Chief):</b> Name: Shane Lauderdale		Signature: _____
<b>ICS 215A</b>		Date/Time: 08.20.2020 1700 Hours





# ICS 205 - INCIDENT RADIO COMMUNICATIONS PLAN

CONTROLLED UNCLASSIFIED  
INFORMATION//BASIC

<b>1. Incident Name:</b> BTU/TGU Lightning Complex BUTTE ZONE	<b>2. Date/Time Prepared</b> Date: 08/20/2020 Time: 1930	<b>3. Operational Period:</b> Date To: 08/22/20 Time To: 0700
---	--	---

4. Communications									
Ch#	Function	Name	Assigned To	Rx Freq	Rx Tone	Tx Freq	Tx Tone	Notes	
1	COMMAND	CDF C1	ALL DIVS	151.3550 N	103.5 (T8)	159.3000 N	131.8 (T3)	BLOOMER MTN	
2	COMMAND	BUTTE CMD	ALL DIVS	154.4150 N	123.0 (T2)	159.0000 N	136.5 (T4)		
3	TACTICAL	CDF T24	DIV AA/GG	151.3325 N	192.8 (T16)	151.3325 N	192.8 (T16)	BRANCH I/X	
4	TACTICAL	CDF T29	DIV WW	151.3475 N	192.8 (T16)	151.3475 N	192.8 (T16)	BRANCH I	
5	TACTICAL	CDF T30	DIV HH	151.3925 N	192.8 (T16)	151.3925 N	192.8 (T16)	BRANCH V	
6	TACTICAL	CDF T32	DIV PP	151.2425 N	192.8 (T16)	151.2425 N	192.8 (T16)	BRANCH V	
7	TACTICAL	VFIRE 23	DIV SS	154.2950 N	156.7 (T6)	154.2950 N	156.7 (T6)	BRANCH V	
8									
9									
10									
11									
12									
13									
14	AIR TO GROUND	CDF T18	ALL DIVS	159.3450 N	192.8 (T16)	159.3450 N	192.8 (T16)		
15	MEDICAL	CALCORD	ALL DIVS	156.0750 N	156.7 (T6)	156.0750 N	156.7 (T6)		
16	AIRGUARD	AIRGUARD V1	ALL DIVS	168.6250 N		168.6250 N	110.9 (T1)		
17									
18									
19									
20									

**5. Special Instructions**

---



---



---

<b>6. Prepared by (Communications Unit Leader):</b> Name: Mike Heyfron COML	<b>Signature:</b>
<b>ICS 205 - CONTROLLED UNCLASSIFIED INFORMATION//BASIC</b>	<b>Date/Time:</b> 08/20/20 1930

# ICS 205 - INCIDENT RADIO COMMUNICATIONS PLAN

<b>1. Incident Name:</b> BTU/TGU Lightning Complex TEHAMA ZONE		<b>2. Date/Time Prepared</b> Date: 08/20/2020 Time: 1930		<b>3. Operational Period:</b> Date From: 08/21/20 Time From: 0700 Date To: 08/22/20 Time To: 0700	
--	--	--	--	---	--

4. Communications								
Ch#	Function	Name	Assigned To	Rx Freq	Rx Tone	Tx Freq	Tx Tone	Notes
1	COMMAND	CDF C7	ALL DIVS	151.4600	103.5 (T8)	159.3900	110.9 (T1)	
2								
3								
4	TACTICAL	CDF T1	DIV C	151.2527 N	192.8 (T16)	151.2527 N	192.8 (T16)	
5	TACTICAL	CDF T30	DIV G	151.3925 N	192.8	151.3925 N	192.8	
6	TACTICAL	VFIRE 26	DIV Q	154.3025 N	156.7 (T6)	154.3025 N	156.7 (T6)	
7								
8								
9								
10								
11								
12								
13								
14	TACTICAL	CDF T15	ALL DIVS	159.2700 N	192.8 (T16)	159.2700 N	192.8 (T16)	
15	MEDICAL	CALCORD	ALL DIVS	156.0750 N	T6 - 156.7	156.0750 N	T6 - 156.7	
16	AIRGUARD	AIRGUARD V1	ALL DIVS	168.6250 N		168.6250 N	110.9 (T1)	
17								
18								
19								
20								

**5. Special Instructions**

<b>6. Prepared by (Communications Unit Leader): Name:</b>		Signature: 	
ICS 205 - CONTROLLED UNCLASSIFIED INFORMATION//BASIC		Date/Time: 08/20/20 1930	

# ICS 205 - INCIDENT RADIO COMMUNICATIONS PLAN

**1. Incident Name:** BTU/TGU Lightning Complex  
GLENN ZONE

**2. Date/Time Prepared:** Date: 08/20/2020 Time: 1930

**3. Operational Period:** Date From: 08/21/20 Date To: 08/22/20  
Time From: 0700 Time To: 0700

4. Communications		Name	Assigned To	Rx Freq	Rx Tone	Tx Freq	Tx Tone	Notes
Ch#	Function							
1	COMMAND	CDF C7	ALL DIVS	151.4600	103.5 (T8)	159.3900	110.9 (T1)	
2								
3								
4	TACTICAL	CDF T28	DIV BB/CC	151.1825	192.8 (T16)	151.1825	192.8 (T16)	BRANCH XX
5	TACTICAL	CDF T29	DIV WW	151.3475 N	192.8	151.3475 N	192.8	BRANCH XXV
6								
7								
8								
9								
10								
11								
12								
13								
14	TACTICAL	CDF T15	ALL DIVS	159.2700 N	192.8 (T16)	159.2700 N	192.8 (T16)	
15	MEDICAL	CALCORD	ALL DIVS	156.0750 N	T6 - 156.7	156.0750 N	T6 - 156.7	
16	AIRGUARD	AIRGUARD V1	ALL DIVS	168.6250 N		168.6250 N	110.9 (T1)	
17								
18								
19								
20								

**5. Special Instructions**

**6. Prepared by (Communications Unit Leader): Name:** \_\_\_\_\_  
Signature: 

**ICS 205 - CONTROLLED UNCLASSIFIED INFORMATION//BASIC**  
NIMS IAP Date/Time: 08/20/20 1930

## MEDICAL PLAN (ICS 206)

<b>1. Incident Name:</b> <p style="text-align: center;"><b>BUTTE ZONE</b></p>	<b>2. Operational Period:</b> Date From: <u>8/21/20</u> Date To: <u>8/22/20</u> Time From: <u>0700</u> Time To: <u>0700</u>
--	---

Name	Location	Contact Number/Freq	Paramedics

**4. Transportation (indicate air or ground):**

Ambulance Service	Location	Contact Number	Level of Service
Butte County EMS	Chico, CA	530-895-9124	ALS
Air Ambulance-Reach / CALSTAR	Marysville, CA	800-338-4045	RN
Enloe Air Ambulance	Chico, CA	800-344-1863	RN

**5. Hospitals:**

Hospital Name	Address, Lat & Long Helipad	Contact Number(s)/ Frequency	Travel Time		Trauma Center	Burn Center	Helipad
			Air	Ground			
Enloe Medical Center	39.7426 -121.8497	530 332-7743	7	20	Level 2	<input type="checkbox"/>	<input checked="" type="checkbox"/>
Oroville Hospital	39.5067 -121.5411	530 532-8334	7	20	Level 3	<input type="checkbox"/>	<input checked="" type="checkbox"/>
UC Davis Medical Center	38.5549 -121.4552	916 734-3790	30	90	Level 1	<input checked="" type="checkbox"/>	<input checked="" type="checkbox"/>
						<input type="checkbox"/>	<input type="checkbox"/>
						<input type="checkbox"/>	<input type="checkbox"/>

**6. Special Medical Emergency Procedures**

**Line Emergency**  
Crew Supervisor will contact Division Supervisor with patient complaint/condition and location.  
- Division Group Supervisor Contacts:  
1. Closest EMS resource  
2. Communications Unit  
- Communications Unit Contacts:  
1. Ground or Air ambulance as requested.  
2. Operations  
3. Safety  
4. Medical Unit  
- Division Supervisor or designee will serve as point of contact and run medical emergency on assigned channel.  
1. A pre-assigned tactical frequency (i.e. CALCORD) should be used for IWI and only for duration of the emergency.  
- Communications Unit will clear the Command channel for emergency traffic as needed for duration of the need.

**Camp Emergency**  
Contact Medical Unit with patient complaint/condition and location. Medical staff will respond to stabilize the patient.  
- Medical Unit contacts  
1. Communications  
2. Safety  
3. Logistics  
4. Operations  
5. Crew Supervisor  
6. Comp/Claims

**Injury Reporting Procedures**

Nature of Injury: \_\_\_\_\_  
 Location of Patient: \_\_\_\_\_  
 Point of Contact: \_\_\_\_\_  
 Transportation Requested by: Air \_\_\_\_\_ Ground \_\_\_\_\_  
 Point of Pick-Up: \_\_\_\_\_  
 Lat: \_\_\_\_\_ Long: \_\_\_\_\_  
 Patient Unit ID: \_\_\_\_\_  
 Is an EMT with Patient: Yes \_\_\_\_\_ No \_\_\_\_\_  
 Age: \_\_\_\_\_ Sex: Male \_\_\_\_\_ Female \_\_\_\_\_

**All Emergencies - Secure the area and identified witnesses for later investigation. Keep accurate log of events.**

Check box if aviation assets are utilized for rescue. If assets are used, coordinate with Air Operations.

**7. Prepared by (Medical Unit Leader):**  
Signature:   
L. Juliussen

**8. Approved by (Safety Officer):**  
Signature: \_\_\_\_\_  
M. Bergstrand

## MEDICAL PLAN (ICS 206)

<b>1. Incident Name:</b> <p style="text-align: center;"><b>TEHAMA ZONE</b></p>	<b>2. Operational Period:</b> <table style="width: 100%; border-collapse: collapse;"> <tr> <td style="border: none;">Date From:</td> <td style="border: none;">8/21/20</td> <td style="border: none;">Date To:</td> <td style="border: none;">8/22/20</td> </tr> <tr> <td style="border: none;">Time From:</td> <td style="border: none;">0700</td> <td style="border: none;">Time To:</td> <td style="border: none;">0700</td> </tr> </table>	Date From:	8/21/20	Date To:	8/22/20	Time From:	0700	Time To:	0700
Date From:	8/21/20	Date To:	8/22/20						
Time From:	0700	Time To:	0700						

<b>3. Medical Aid Stations:</b>			
Name	Location	Contact Number/Freq	Paramedics
CAL FIRE BLS Engine Companies	Red Bluff/Corning	(530) 529-8542	/ Yes

<b>4. Transportation (indicate air or ground):</b>			
Ambulance Service	Location	Contact Number	Level of Service
Saint Elizabeth's Hospital	Red Bluff/ Corning	(530) 529-8542	ALS

<b>5. Hospitals:</b>							
Hospital Name	Address,	Contact Number(s)/ Frequency	Travel Time		Trauma Center	Burn Center	Helipad
	Lat & Long		Air	Ground			
Saint Elizabeth's Hospital	2550 Sister Mary Columba Dr.	(530) 529-8000	5	15		<input type="checkbox"/>	<input checked="" type="checkbox"/>
Enloe Medical Center	1531 Esplanade Ave. Chico	(530) 332-7300	25	50		<input type="checkbox"/>	<input checked="" type="checkbox"/>
UC Davis Medical Center	2315 Stockton Blvd. Sacramento	(916) 734-3636	50	100		<input checked="" type="checkbox"/>	<input type="checkbox"/>
						<input type="checkbox"/>	<input type="checkbox"/>
						<input type="checkbox"/>	<input type="checkbox"/>

<b>6. Special Medical Emergency Procedures</b>	
<p><b>Line Emergency</b>                  Crew Supervisor will contact Division Supervisor with patient complaint/condition and location.</p> <p>- Division Group Supervisor Contacts:</p> <ol style="list-style-type: none"> <li>1. Closest EMS resource</li> <li>2. Communications Unit</li> </ol> <p>- Communications Unit Contacts:</p> <ol style="list-style-type: none"> <li>1. Ground or Air ambulance as requested.</li> <li>2. Operations</li> <li>3. Safety</li> <li>4. Medical Unit</li> </ol> <p>- Division Supervisor or designee will serve as point of contact and run medical emergency on assigned channel.</p> <ol style="list-style-type: none"> <li>1. A pre-assigned tactical frequency (i.e. CALCORD) should be used for IWI and only for duration of the emergency.</li> </ol> <p>- Communications Unit will clear the Command channel for emergency traffic as needed for duration of the need.</p> <p><b>Camp Emergency</b>                  Contact Medical Unit with patient complaint/condition and location. Medical staff will respond to stabilize the patient.</p> <p>- Medical Unit contacts</p> <ol style="list-style-type: none"> <li>1. Communications</li> <li>2. Safety</li> <li>3. Logistics</li> <li>4. Operations</li> <li>5. Crew Supervisor</li> <li>6. Comp/Claims</li> </ol>	<p><b>Injury Reporting Procedures</b></p> <p>Nature of Injury: _____</p> <p>Location of Patient: _____</p> <p>Point of Contact: _____</p> <p>Transportation Requested by: Air _____ Ground _____</p> <p>Point of Pick-Up: _____</p> <p style="padding-left: 40px;">Lat: _____ Long: _____</p> <p>Patient Unit ID: _____</p> <p>Is an EMT with Patient: Yes _____ No _____</p> <p>Age: _____ Sex: Male _____ Female _____</p> <p style="text-align: center;"><b>All Emergencies - Secure the area and identified witnesses for later investigation. Keep accurate log of events.</b></p>

Check box if aviation assets are utilized for rescue. If assets are used, coordinate with Air Operations.

<b>7. Prepared by (Medical Unit Leader):</b>	<b>Signature:</b>
Leif Juliussen	
<b>8. Approved by (Safety Officer):</b>	<b>Signature:</b>
Doug Ferro, Bill Murphy	



## MEDICAL PLAN (ICS 206)

<b>1. Incident Name:</b> <p style="text-align: center; margin-top: 10px;"><b>GLENN ZONE</b></p>	<b>2. Operational Period:</b> <table style="width: 100%; border-collapse: collapse;"> <tr> <td style="border-bottom: 1px solid black;">Date From: 8/21/20</td> <td style="border-bottom: 1px solid black;">Date To: 8/22/20</td> </tr> <tr> <td style="border-bottom: 1px solid black;">Time From: 0700</td> <td style="border-bottom: 1px solid black;">Time To: 0700</td> </tr> </table>	Date From: 8/21/20	Date To: 8/22/20	Time From: 0700	Time To: 0700
Date From: 8/21/20	Date To: 8/22/20				
Time From: 0700	Time To: 0700				

<b>3. Medical Aid Stations:</b>			
Name	Location	Contact Number/Freq	Paramedics

<b>4. Transportation (indicate air or ground):</b>			
Ambulance Service	Location	Contact Number	Level of Service
Enloe	Chico		
Westside Ambulance	Orland		
Saint Elizabeth	Red Bluff/ Corning	530-529-8542	

<b>5. Hospitals:</b>								
Hospital Name	Address,		Contact Number(s)/ Frequency	Travel Time		Trauma Center	Burn Center	Helipad
	Lat & Long Helipad			Air	Ground			
Glenn	1133 W Sycamore St Willows		530-934-1818				<input type="checkbox"/>	<input type="checkbox"/>
Enloe Medical Center	1531 Esplanade Ave. Chico		530-332-7300	25	50		<input type="checkbox"/>	<input checked="" type="checkbox"/>
UC Davis	2315 Stockton Blvd. Sacramento		916-734-3636	50	100		<input checked="" type="checkbox"/>	<input checked="" type="checkbox"/>
							<input type="checkbox"/>	<input type="checkbox"/>
							<input type="checkbox"/>	<input type="checkbox"/>

<b>6. Special Medical Emergency Procedures</b>	
<p><b>Line Emergency</b>  Crew Supervisor will contact Division Supervisor with patient complaint/condition and location.</p> <ul style="list-style-type: none"> <li>- Division Group Supervisor Contacts: <ol style="list-style-type: none"> <li>1. Closest EMS resource</li> <li>2. Communications Unit</li> </ol> </li> <li>- Communications Unit Contacts: <ol style="list-style-type: none"> <li>1. Ground or Air ambulance as requested.</li> <li>2. Operations</li> <li>3. Safety</li> <li>4. Medical Unit</li> </ol> </li> <li>- Division Supervisor or designee will serve as point of contact and run medical emergency on assigned channel. <ol style="list-style-type: none"> <li>1. A pre-assigned tactical frequency (i.e. CALCORD) should be used for IWI and only for duration of the emergency.</li> </ol> </li> <li>- Communications Unit will clear the Command channel for emergency traffic as needed for duration of the need.</li> </ul> <p><b>Camp Emergency</b>  Contact Medical Unit with patient complaint/condition and location. Medical staff will respond to stabilize the patient.</p> <ul style="list-style-type: none"> <li>- Medical Unit contacts <ol style="list-style-type: none"> <li>1. Communications</li> <li>2. Safety</li> <li>3. Logistics</li> <li>4. Operations</li> <li>5. Crew Supervisor</li> <li>6. Comp/Claims</li> </ol> </li> </ul>	<p><b>Injury Reporting Procedures</b></p> <p>Nature of Injury: _____</p> <p>Location of Patient: _____</p> <p>Point of Contact: _____</p> <p>Transportation Requested by: Air _____ Ground _____</p> <p>Point of Pick-Up: _____</p> <p style="padding-left: 40px;">Lat: _____ Long: _____</p> <p>Patient Unit ID: _____</p> <p>Is an EMT with Patient: Yes _____ No _____</p> <p>Age: _____ Sex: Male _____ Female _____</p> <p style="text-align: center; margin-top: 20px;"><b>All Emergencies - Secure the area and identified witnesses for later investigation. Keep accurate log of events.</b></p>

Check box if aviation assets are utilized for rescue. If assets are used, coordinate with Air Operations.

<b>7. Prepared by (Medical Unit Leader):</b>	Signature: _____
Leif Juliussen	
<b>8. Approved by (Safety Officer):</b>	Signature: _____
Doug Ferro, Bill Murphy	

ICS 206	NIMS IAP	Date/Time: _____
---------	----------	------------------



# **BTU/TGU LIGHTNING COMPLEX**

**CA-BTU-009841**

**REMOTE CHECK-IN**



**Please use this code to Check In to the  
BTU/TGU LIGHTNING COMPLEX**

**REMEMBER: YOU MUST STILL VISIT TIME UNIT!**

***TRAINING SPECIALIST  
MESSAGE***

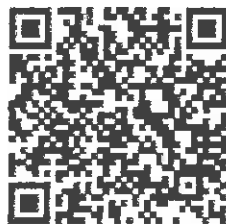
**A Training Specialist is available for trainees on  
the incident.**

**All State, Federal and local government agency  
Trainees working on Position Task Books will  
need to register with the Incident Training  
Specialist in order to receive proper credit for  
your assignment.**

***Training Specialist's***

***Dennis Martin***

**(707) 479-8421**



**Register using the QR Code**



# **TEHAMA ZONE** **INCIDENT** **INFORMATION**

**(530)526-7625**

Please scan the QR Below for CAL FIRE's Social Media Policy 0691.



# Travel Map Butte North

Butte Lightning Complex  
CA-BTU-009692



### From Butte Fire Center to Fires off Powellton Rd:

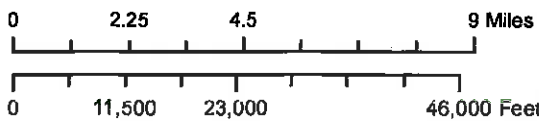
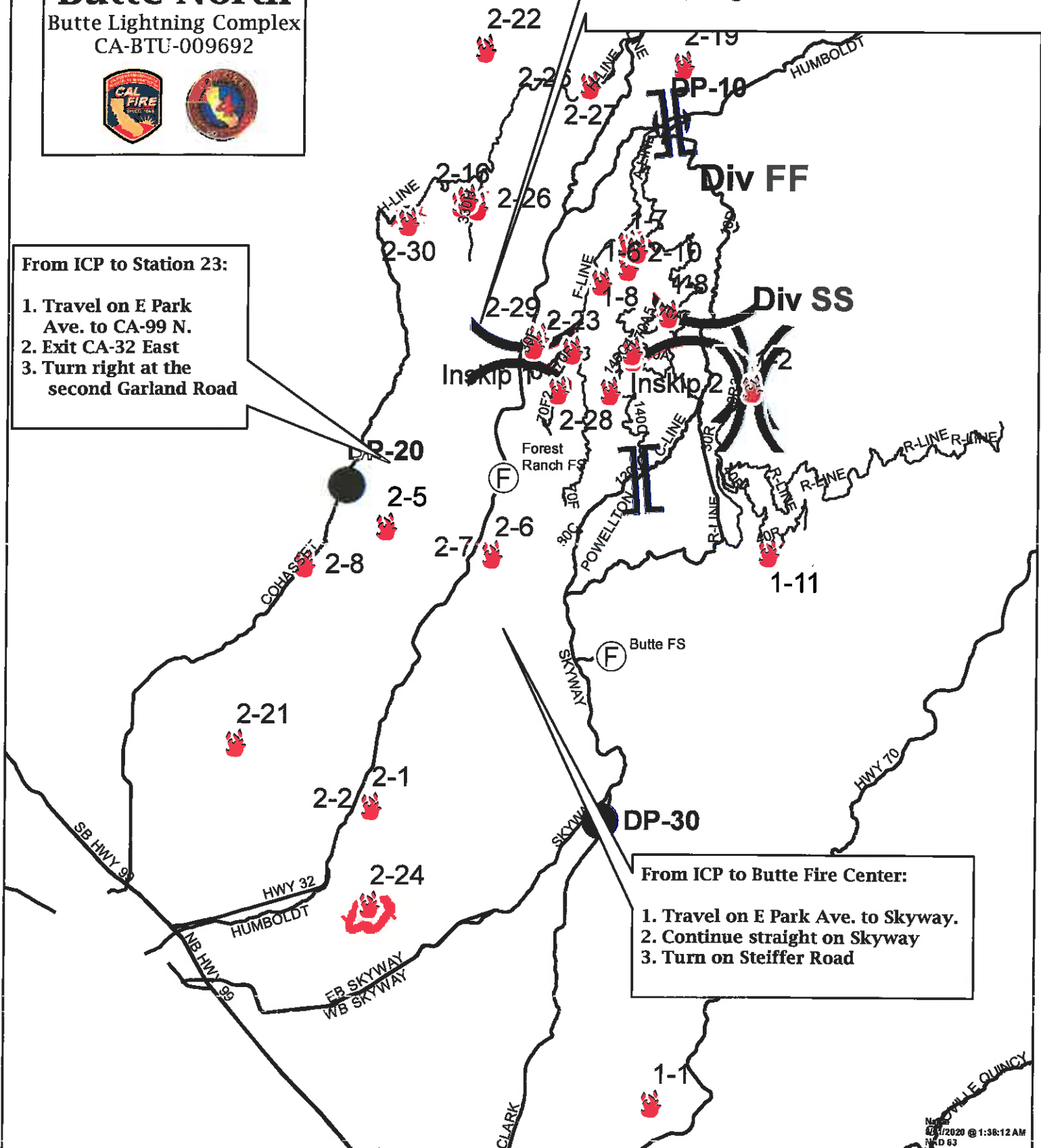
1. Turn Right on Skyway.
2. Turn left on Powellton Rd
3. Access through various SPI roads

### From ICP to Station 23:

1. Travel on E Park Ave. to CA-99 N.
2. Exit CA-32 East
3. Turn right at the second Garland Road

### From ICP to Butte Fire Center:

1. Travel on E Park Ave. to Skyway.
2. Continue straight on Skyway
3. Turn on Steiffer Road

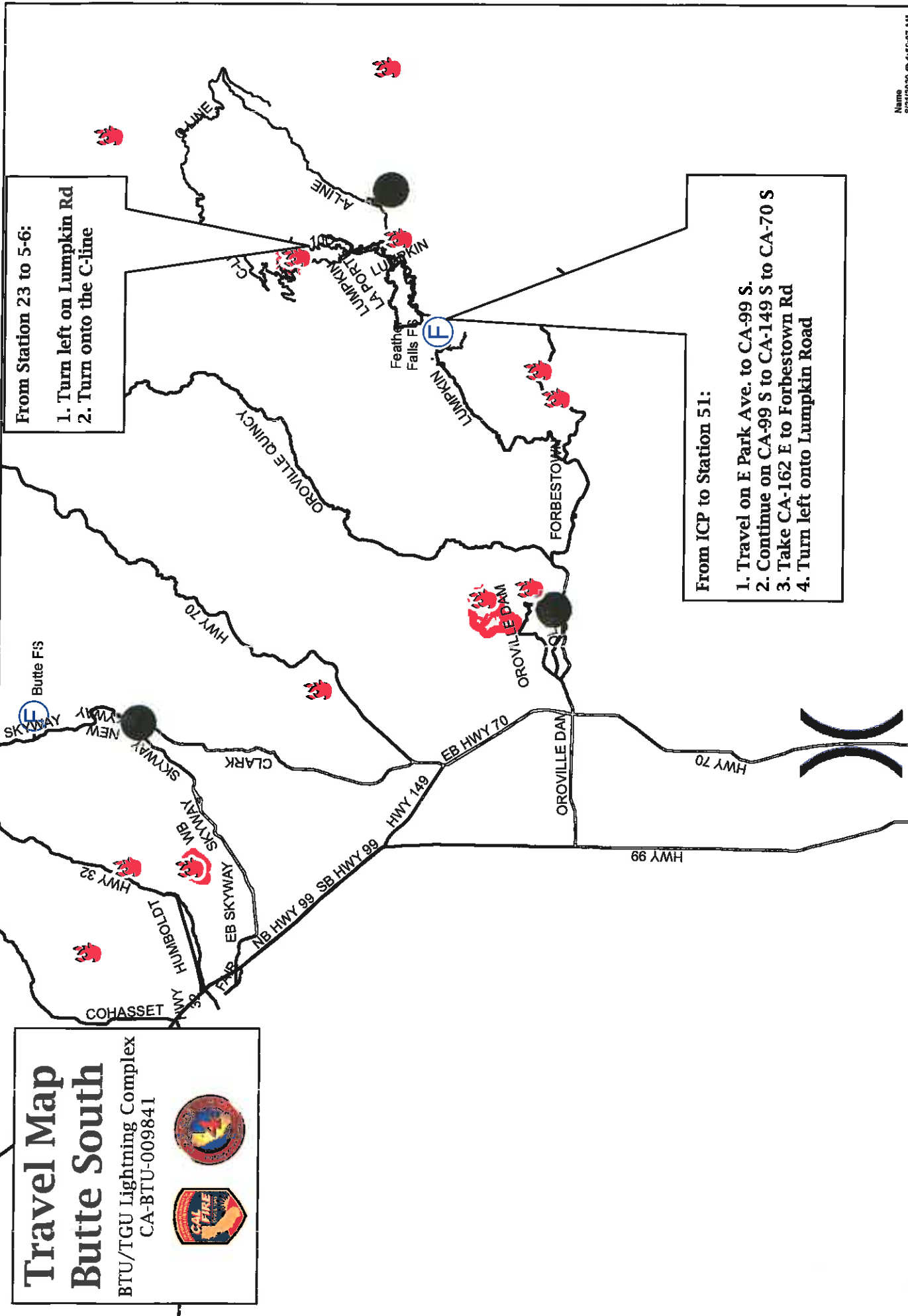


Incident Command Post	Water Source	Uncontrolled Fire Edge	Hand Line
Staging Area	Helibase	Completed Dozer Line	Completed Line
Drop Point	Helispot		

Map Date: 2/1/2020 @ 1:38:12 AM  
Map ID: 63

# Travel Map Butte South

BTU/TGU Lightning Complex  
CA-BTU-009841



**From Station 23 to 5-6:**  
 1. Turn left on Lumpkin Rd  
 2. Turn onto the C-line

**From ICP to Station 51:**  
 1. Travel on E Park Ave. to CA-99 S.  
 2. Continue on CA-99 S to CA-149 S to CA-70 S  
 3. Take CA-162 E to Forbestown Rd  
 4. Turn left onto Lumpkin Road

Name  
8/21/2020 @ 1:55:07 AM  
MAD 83

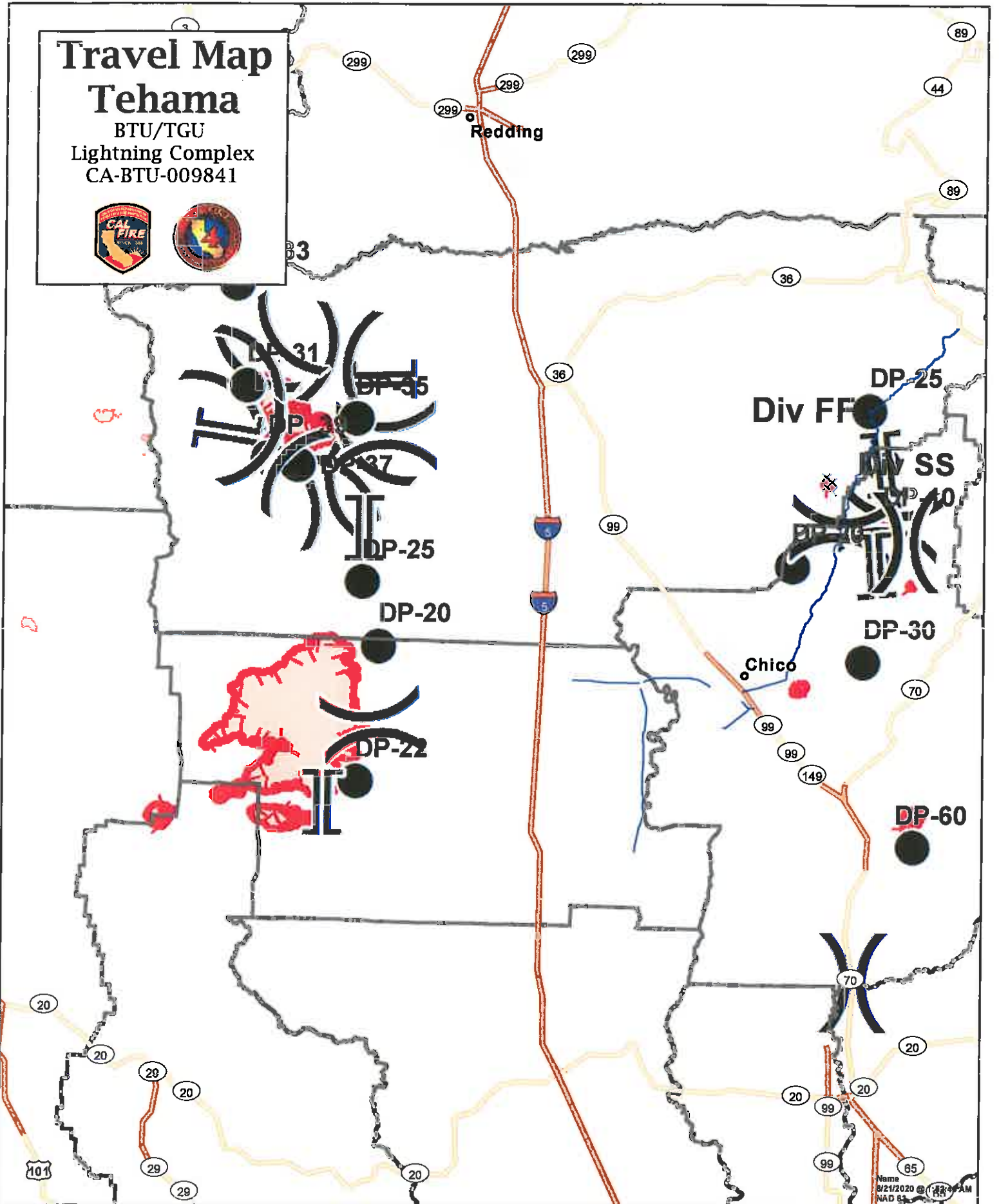
0 5 10 20 Miles

0 18,500 37,000 74,000 Feet

Incident Command Post  
 Water Source  
 Uncontrolled Fire Edge  
 Hand Line  
 Staging Area  
 Helibase  
 Completed Dozer Line  
 Drop Point  
 Completed Line

# Travel Map Tehama

BTU/TGU  
Lightning Complex  
CA-BTU-009841



0 5 10 20 Miles

0 39,500 79,000 158,000 Feet

- Incident Command Post
- Staging Area
- Drop Point
- Water Source
- Helibase
- Helispot
- Uncontrolled Fire Edge
- Completed Dozer Line
- Completed Line
- H - Hand Line

Name: 8/21/2020 @ 11:23 AM  
NAD 83

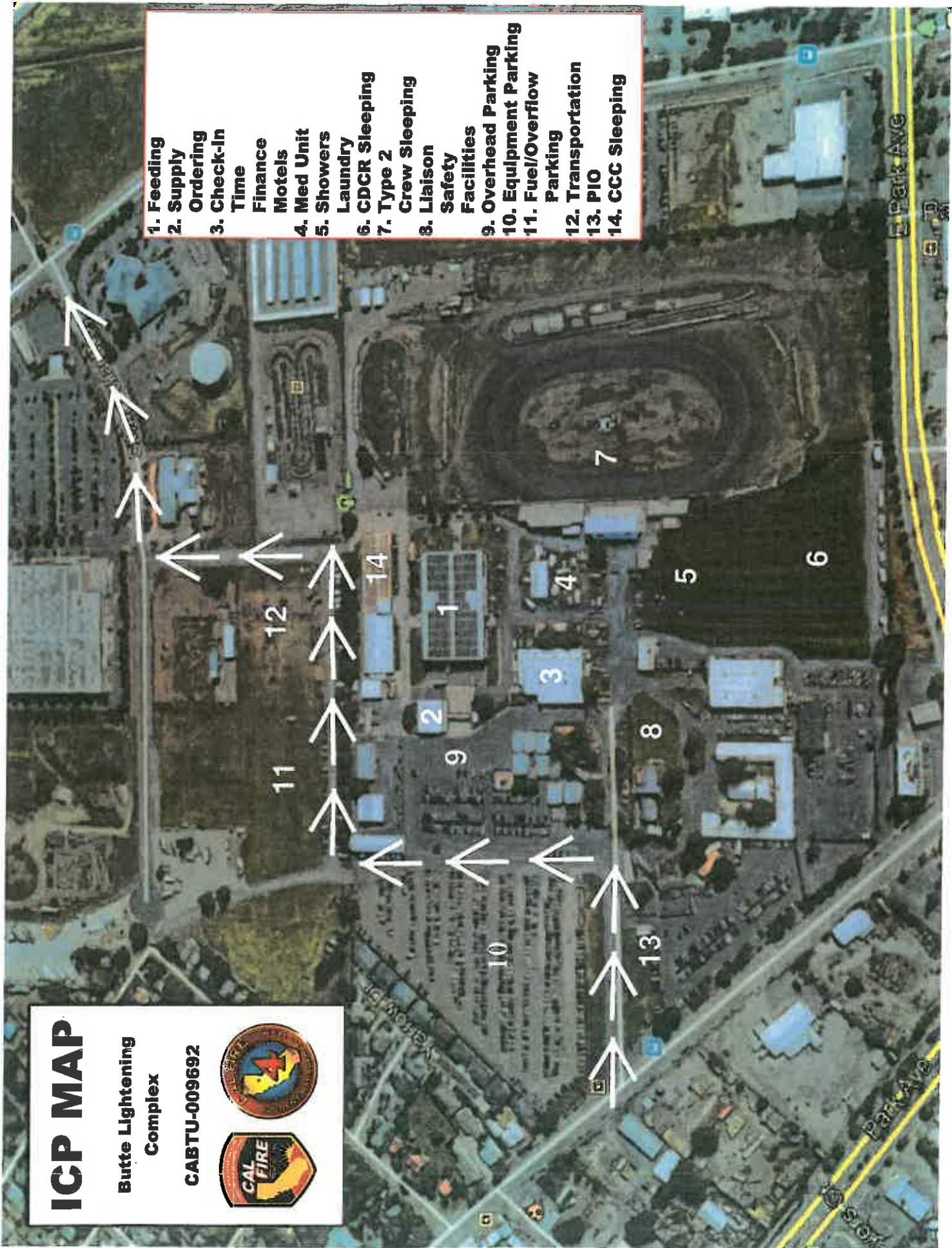
# ICP MAP

Butte Lightening  
Complex

CABTU-009692



1. Feeding
2. Supply Ordering
3. Check-In Time
4. Finance Motels
5. Med Unit
6. Showers
7. Laundry
8. CDCR Sleeping
9. Type 2
10. Crew Sleeping
11. Liaison
12. Safety Facilities
13. Overhead Parking
14. Equipment Parking
15. Fuel/Overflow Parking
16. Transportation
17. PIO
18. CCC Sleeping





## AVENZA MAP HOW TO QUICK GUIDE

### Add a Placemark:

1. Pan to a position on the map centered by the crosshair (select exact location, not the road nearby)
2. Tap Add Placemark. A placemark is added with the default icon color, name (can be changed)



3. Name Placemark under Title.
4. Change symbol, if desired.
5. Click Submit.

### Changing Placemark Details:

1. Tap the placemark on the map to display the label
2. Tap icon on the placemark label to see details about the placemark
3. On the placemark detail screen, you can change the placemark title, icon, enter a description, add photos, edit the location coordinate, and edit attribute schema.

### Moving a Placemark on a Map:

1. Tap and hold a placemark
2. Drag the placemark to another position and release

### Recording a Track:

1. Tap Tools and select Record GPS Tracks



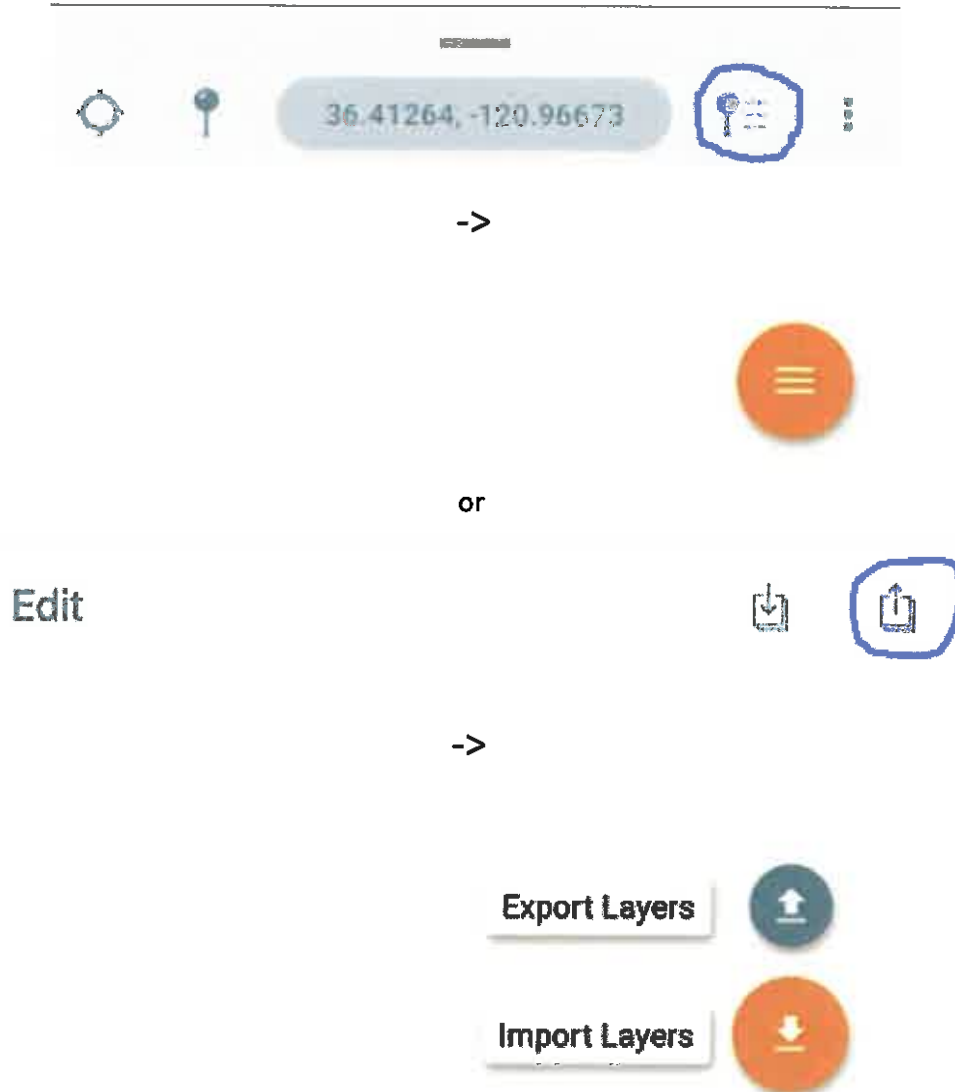
2. Select tracking (middle column).
3. Once a signal has been established ("Start" will be displayed for iOS, "Ready" will be displayed for Android), tap "Start" (iOS) or the Play icon (Android) to begin recording. Your tracks will continue recording, even if you minimize the app (set phone settings Avenza to always run GPS)



4. When you are done recording, tap 'Stop' (iOS) or "Done" (Android) and the track will be saved as a Map Feature.

#### Exporting Features:

1. Tap Map Features
  - a. Android devices - Tap on Menu, and select Export Map Features
  - b. iOS devices - Tap Export (bottom right button with up arrow).
2. Choose the desired export settings (e.g., Export to Others)
3. Select Export (all features). The features will be exported to the desired location



Email the .kml files to [CalFireIMT4GIS@gmail.com](mailto:CalFireIMT4GIS@gmail.com)



