



Hog Incident
CA-LMU-003874
July 26, 2020
0700 - 0700

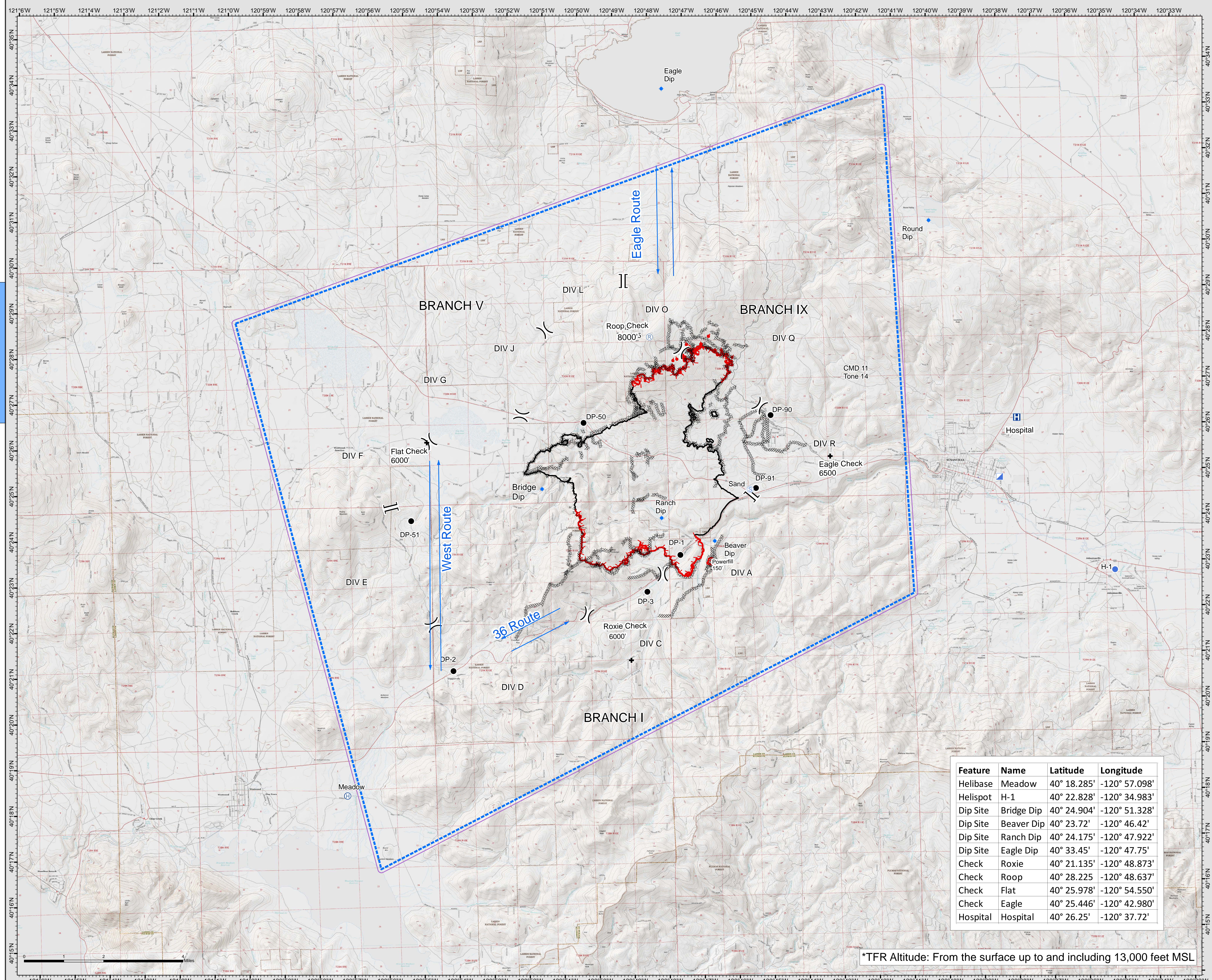
Air Ops Map

Legend

- Dip Site
- Drop Point
- H Helibase
- Helispot
- IC Incident Command Post
- R Repeater
- S Staging Area
-) Division Break
- | Branch Break
- + Check
- H Hospital
- Uncontrolled Fire Edge
- Completed Line
- Completed Dozer Line
- Hand Line
- TFR*



Team 3 GIS
NAD 83



Feature	Name	Latitude	Longitude
Helibase	Meadow	40° 18.285'	-120° 57.098'
Helispot	H-1	40° 22.828'	-120° 34.983'
Dip Site	Bridge Dip	40° 24.904'	-120° 51.328'
Dip Site	Beaver Dip	40° 23.72'	-120° 46.42'
Dip Site	Ranch Dip	40° 24.175'	-120° 47.922'
Dip Site	Eagle Dip	40° 33.45'	-120° 47.75'
Check	Roxie	40° 21.135'	-120° 48.873'
Check	Roop	40° 28.225'	-120° 48.637'
Check	Flat	40° 25.978'	-120° 54.550'
Check	Eagle	40° 25.446'	-120° 42.980'
Hospital	Hospital	40° 26.25'	-120° 37.72'

*TFR Altitude: From the surface up to and including 13,000 feet MSL