



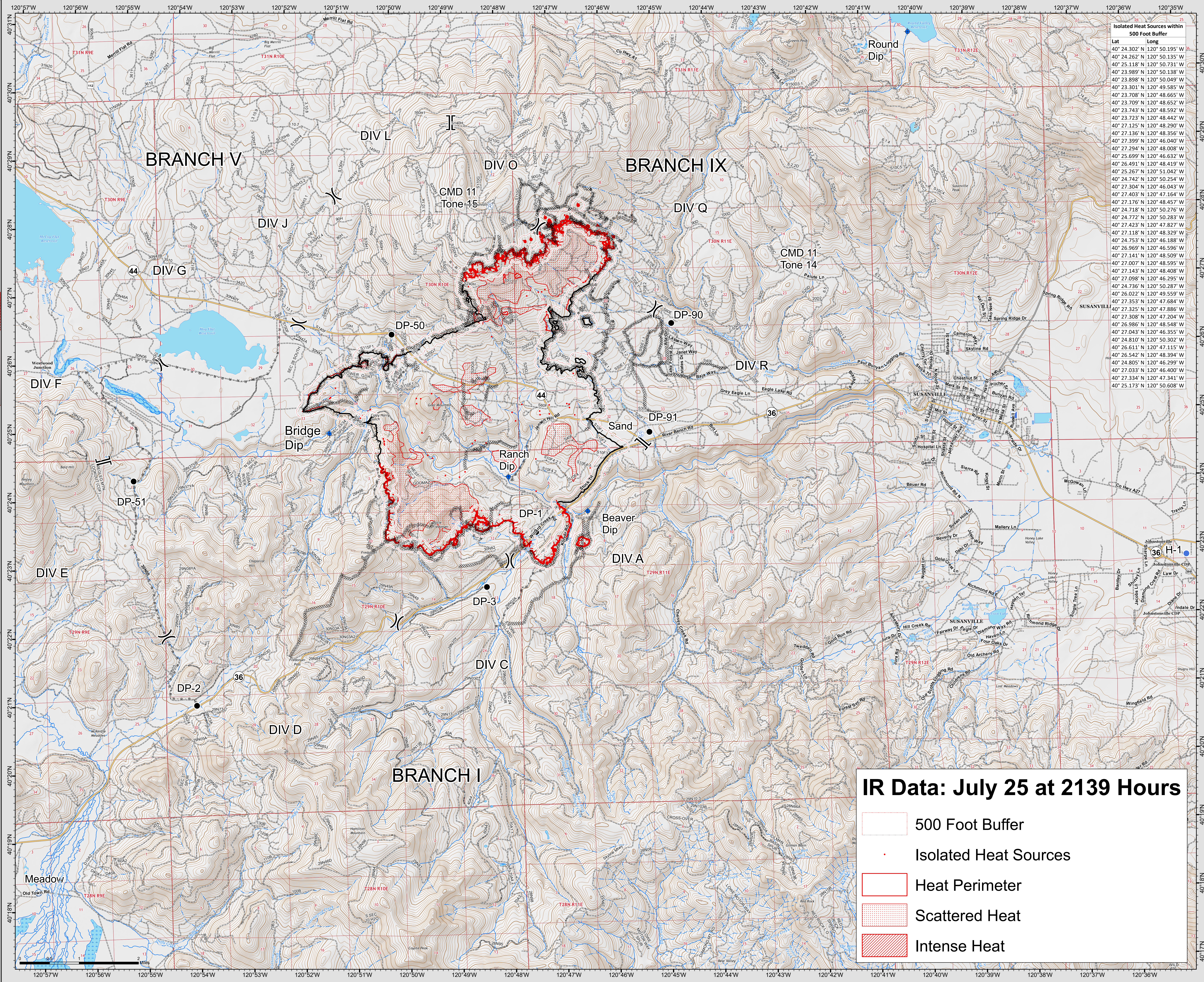
Hog Incident
CA-LMU-003874
July 26, 2020
0700 - 0700

Ops IR Map

- Legend**
- Dip Site
 - Drop Point
 - Helibase
 - Helispot
 - Incident Command Post
 - Repeater
 - Staging Area
 - Division Break
 - Branch Break
 - Uncontrolled Fire Edge
 - Completed Line
 - Road as Completed Line
 - Completed Dozer Line
 - Hand Line



Team 3 GIS
 NAD 83



Isolated Heat Sources within 500 Foot Buffer

Lat	Long
40° 24.302' N	120° 50.195' W
40° 24.262' N	120° 50.135' W
40° 25.118' N	120° 50.731' W
40° 23.989' N	120° 50.138' W
40° 23.898' N	120° 50.049' W
40° 23.301' N	120° 49.585' W
40° 23.708' N	120° 48.665' W
40° 23.709' N	120° 48.652' W
40° 23.743' N	120° 48.592' W
40° 23.723' N	120° 48.442' W
40° 27.125' N	120° 48.290' W
40° 27.136' N	120° 48.356' W
40° 27.399' N	120° 46.040' W
40° 27.294' N	120° 48.008' W
40° 25.699' N	120° 46.632' W
40° 26.491' N	120° 48.419' W
40° 25.267' N	120° 51.042' W
40° 24.742' N	120° 50.254' W
40° 27.304' N	120° 46.043' W
40° 27.403' N	120° 47.164' W
40° 27.176' N	120° 48.457' W
40° 24.772' N	120° 50.283' W
40° 27.423' N	120° 47.827' W
40° 27.118' N	120° 48.329' W
40° 24.753' N	120° 46.188' W
40° 26.969' N	120° 46.596' W
40° 27.141' N	120° 48.509' W
40° 27.007' N	120° 48.595' W
40° 27.143' N	120° 48.408' W
40° 27.098' N	120° 46.295' W
40° 26.022' N	120° 49.559' W
40° 24.736' N	120° 50.287' W
40° 27.353' N	120° 47.684' W
40° 27.325' N	120° 47.886' W
40° 27.308' N	120° 47.204' W
40° 26.986' N	120° 48.548' W
40° 27.043' N	120° 46.355' W
40° 24.810' N	120° 50.302' W
40° 26.611' N	120° 47.115' W
40° 26.542' N	120° 48.394' W
40° 24.805' N	120° 46.299' W
40° 27.033' N	120° 46.400' W
40° 27.334' N	120° 47.341' W
40° 25.173' N	120° 50.608' W

IR Data: July 25 at 2139 Hours

- 500 Foot Buffer
- Isolated Heat Sources
- Heat Perimeter
- Scattered Heat
- Intense Heat