

INCIDENT ACTION PLAN

HOG INCIDENT

CA-LMU-003874

Wednesday



OPERATIONAL PERIOD

7/22/2020 0700

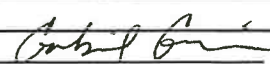
to

7/23/2020 0700



This Page Intentionally Blank

ORGANIZATION ASSIGNMENT LIST (ICS 203)

1. Incident Name: Hog		2. Operational Period: Date From: 7/22/2020 Time From: 0700		Date To: 7/23/2020 Time To: 0700	
3. Incident Commander(s) and Command Staff:			7. Operation Section:		
IC/UC's	B. SEE	Operations	S. NORMAN		
Deputy	B. FARIAS / K. BOHALL (T) / G. BELYEA (T)	Deputy Operations	M. BRUNTON		
Safety Officer	D. SARGENTI / D. BROCKMAN (T)	Night Ops	J. OHS		
Information Officer	D. OLSON / B. MERCADO (T)	Staging Area			
Liaison Officer	M. SMITH / J. DAPPER (T) / J. JARED (CHP)	Branch	I	S. JERRY	
4. Agency/Organization Representatives:		Division/Group	A	J. KEOWN	
Agency/Organization	Name	Division/Group	C	TBD	
USFS Agency Rep	D. MUELLER	Division/Group	D	TBD	
USFS Agency Admin	B. DRAKE	Division/Group	E	LOPEZ	
BLM Admin	E. RYAN	Division/Group			
CHP	LT. A. POYNER	Branch	V	R. DANIELSON	
OES Mngr.	S. ROJAS	Division/Group	F	TBD	
LCSO Sheriff	D. GROWDEN	Division/Group	G	TBD	
		Division/Group	J / L	TBD	
		Division/Group			
		Division/Group			
		Branch	IX	J. PIERCE / J. GAHAGAN (T)	
		Division/Group	O	N. GARCIA / W. DARNALL (T)	
		Division/Group	Q	J. REYES / J. BAKER	
		Division/Group	R	G. ENGEN / WRANT (T)	
		Division/Group			
		Branch	Contingency	M. JOHNSON	
		Division/Group			
5. Planning Section:		Division/Group			
Chief	B. BLOXHAM	Division/Group			
Deputy	S. DEBENEDET / G. GARCIA	Division/Group			
Resource Unit	L. PLATA / T. BYRD / M. SELZER (T) / J. HEALD (T)	Division/Group			
Situation Unit	T. TUGGLE / M. THAU (T)	Branch	Staging		
Documentation Unit		Division/Group			
Demobilization Unit	E. CAMPBELL	Division/Group			
GISS	S. STANISH	Division/Group			
FBAN	B. NEWMAN	Division/Group			
IMET	T. FUENTES	Division/Group			
Training Tech Spec	J. VOYSON	Air Operations Branch		Director:	M. STANFORD / S. HAWKINS (T)
Hired Equip. Tech Spec	A. WHITLOCK	Air Support Group Supervisor		C. WILSON	
6. Logistics Section		Air Tactical Group Supervisor			
Chief	R. TOVAR	Helibase Manager		J. COLLINS	
Deputy	R. CLUFF				
Supply Unit	J. BECKMAN / J. PECKHAM (T)	8. Finance/Administration Section:			
Facilities Unit	R. HOSTETLER	Chief	R. RAINES		
Ground Support Unit	A. WHITLOCK	Deputy	T. EASTWOOD / P. AGUADA (T)		
Communications Unit	K. JOHNSON	Time Unit	J. OROZCO JR. / Fed Finance T. FORK		
Medical Unit	K. FORTNEY	Procurement Unit	K. SHAEFER		
Ordering Manager	J. SCHEID	Comp/Claims Unit	A. HESTERLY		
		Cost Unit	D. SOLIS (T)		
Prepared By: Name:	G. GARCIA	Position/Title:	PSC	Signature:	
ICS 203		Date/Time:	7/22/2020 2000		



Hog Fire Forecast

FORECAST NO: 2
 NAME OF FIRE: Hog Incident Meteorologist (IMET): Tony Fuentes
 UNIT: CALFIRE Team 3 Email: Tony.Fuentes@noaa.gov
 PREDICTION FOR: Wednesday Shift Cell: (240) 778-5300
 SHIFT DATE: July 22, 2020
 FORECAST ISSUED: 2000 PDT July 21, 2020

*** Dry Lightning Threat: Red Flag Warning Today ***

An incoming low pressure system will result in another day of increased potential for thunderstorms today. A few storms may become strong or severe. Strong outflows with erratic and sudden wind shifts are possible with these storms along with localized areas of heavy rainfall, hail, and dry lightning strikes.

TODAY (WEDNESDAY): *Red Flag Warning: until 2100*
WEATHER: Scattered showers and thunderstorms after 1200. A hybrid mix of wet/dry storms. A few storms could be strong or severe.
WINDS (EYE LEVEL): West around 9 - 14 mph after 1400. Gusty and erratic winds with outflows of up to 60 mph possible near thunderstorms in the afternoon.
MAX TEMPERATURES: 83 - 87°
MINIMUM HUMIDITY: 20 - 25%
TRANSPORT WIND: S 10 - 15 mph, shifting W 15 - 25 mph after 1700.
LAL 4 HAINES: 5

TONIGHT (WEDNESDAY NIGHT):
WEATHER: Partly cloudy. A few lingering showers through 2000.
MIN TEMPERATURES: 48 - 53°F
MAX HUMIDITY: 55 - 60%
WINDS (EYE LEVEL): Outflow winds diminishing, becoming downslope 2-6 mph.
LAL: 3, decreasing to 1 overnight.
HAINES: 3

THURSDAY:
WEATHER: Smoke, partly cloudy.
WINDS (EYE LEVEL): Upslope 3-7 mph becoming southwest 9 - 14 mph by late afternoon.
MAX TEMPERATURES: 79 - 84°
MINIMUM HUMIDITY: 20 - 25%
TRANSPORT WIND: W 15 - 20 mph.
LAL 1 HAINES: 4

Extended Forecast Table:

	Fri Jul 24	Sat Jul 25	Sun Jul 26	Mon Jul 27
Wx	Partly Cloudy	Partly Cloudy	Partly cloudy, 5% chance of precip.	Partly cloudy, 5% chance of precip.
Wind:	SW 8-12 mph	W 7-10 mph	W 8-12 mph	W 8-12
Max Temp / Min RH	79-84° 18-23%	80-86° 16-21%	83-88° 15-20%	85-90° 13-19%
Min Temp / Max RH	49-53° 50-55%	50-55° 45-50%	51-56° 45-50%	55-59° 42-47%
CWR	0%	0%	<5%	<5%
Haines	5	5	5	6

FIRE BEHAVIOR FORECAST

FORECAST NUMBER: 2

TYPE OF FIRE: Wildfire

FIRE NAME: Hog

OPERATIONAL PERIOD: 7/22 - 7/23

DATE ISSUED: 7/22/2020

TIME ISSUED: 0600

UNIT: CA-LMU-3874

SIGNED: *Brian Newman*

Typed/printed: Brian Newman FBAN

INPUTS

WEATHER SUMMARY: RED FLAG WARNING IN EFFECT UNTIL 2100 PDT WEDNESDAY DUE TO THUNDERSTORM ACTIVITY AND POTENTIAL DRY LIGHTNING OVER THE FIRE AREA.

Low pressure over the area will increase the chances of thunderstorms to 35%. The potential for dry lightning exists with these storms along with strong gusty erratic outflow winds. Temperature will be slightly cooler than yesterday, 82-87° with RH values increasing, minimums at 20-25% in the afternoon. Winds will be light early becoming west at 9-14 MPH in the afternoon, except for outflow winds of 50-60 from thunderstorm activity. The inversion will clear quicker than yesterday, around 1200, increasing fire activity earlier in the day.

OUTPUTS

FIRE BEHAVIOR

GENERAL: The fire is burning in heavy timber and slash intermixed with bitterbrush, along with clear cut plots littered with moderate to heavy slash. Fuel moistures in the bitterbrush are nearing record levels, with timber fuel moistures very low due to drought conditions in the area. The fire will continue to burn actively when aligned with the wind and slope, even under the inversion.

- Timber and slash: Rates of spread 9 - 16 feet per minute, 35 - 48 feet/minute with outflow winds
Flame lengths 7-10 feet, 11-15 feet with outflow winds
Spotting ¼ to ½ mile, with 1 ½ mile possible during outflow winds
- Brush: Rates of spread 13-15 feet per minute, 80-90 feet per minute with outflow winds
Flame lengths 4-5 feet, 9-11 feet with outflow winds
Spotting up to ½ mile, up to 1 mile with outflow winds
- Probability of Ignition 98%

SPECIFIC:

Branch I: The fire is primarily burning in the bitterbrush within the timber. Fire activity has been dictated by topography until wind increases and becomes a factor. If active thunderstorms develop, increased fire activity with short to midrange spotting is possible. Expect spotting of up to 1 mile when aligned with the wind.

Branch V: This Branch should have low to moderate fire behavior but may still experience spots from outflow winds. Holdover hot spots within the interior can be potential ember producers with enough wind.

Branch IX: This Branch has the largest variation in topography burning in a mix of bitterbrush and manzanita under the heavy timber. There has been significant fire activity when the winds align with the slope, including single and group tree torching. As the day progresses and thunderstorm activity increases, Spotting will be an issue, especially in Divisions O & Q

AIR OPERATIONS: Thick inversion will inhibit air operations until midday. Outflow winds near thunderstorms may affect flight operations

SAFETY

- Be aware of the afternoon thunderstorms that can bring wind shifts
- Fire weakened timber is starting to fall, maintain your situational awareness
- Make sure to identify escape routes and safety zones early in the shift before dark



CALFIRE INCIDENT MANAGEMENT TEAM 3



1. INCIDENT NAME: Hog Incident		2. DATE PREPARED: July 21, 2020	3. TIME PREPARED: 1000
4. PREPARED BY: David Brockman SOF1(t)	5. LEADER NAME: David Sargenti SOF1	6. OPERATIONAL PERIOD: 7/22/2020 0700 TO 7/23/2020 0700	

SAFETY MESSAGE

Never neglect details. When everyone's mind is dulled or distracted the leader must be doubly vigilant.

- Take all COVID 19 precautions.
- Trees are weakened due to fire activity. Look Up, Down, and Around.
- Make sure everyone gets a briefing!
- Monitor your hydration/nutrition intake and keep adequate supplies of each.
- RED FLAG WARNINGS. Thunderstorms are possible during today's operation. Be prepared to take appropriate actions.
- Drive defensively and expect the unexpected.
- Be sure to wash hands prior to entering feeding line.

**"A SOLID SAFETY PROGRAM
ENSURES WORKERS RETURN
HOME EVERY DAY IN THE
SAME CONDITION THEY LEFT
IN"**



1. FIRE NOT SCOUTED AND SIZED UP

CALFIRE INCIDENT MANAGEMENT TEAM 3 SOF1 David Sargenti



INCIDENT RISK ANALYSIS ICS 215A



BRANCH	HAZARDOUS ACTIONS/ CONDITIONS	MITIGATIONS/WARNINGS/REMEDIES
ALL	COVID 19	<ul style="list-style-type: none"> Wear mask when in camp and around the public. Wash/sanitize hands often. Maintain social distancing when applicable. Complete daily COVID screening process.
ALL	THUNDERSTORM ACTIVITY	<ul style="list-style-type: none"> Review IRPG pg.21. Stay updated on current and predicated weather patterns.
ALL	DRIVING HAZARDS	<ul style="list-style-type: none"> Watch your speeds. Drive defensively! Expect the unexpected. Watch for road degradation and dusty conditions. Be aware of debris in the roadways from rollout and suppression operations.
ALL	WEATHER	<ul style="list-style-type: none"> RED FLAG WARNING!! Be aware of changing wind conditions. Watch for changing weather conditions.
ALL	PERSONNEL SAFETY	<ul style="list-style-type: none"> All personnel are responsible for their personal safety. Immediately report any suspicious activity. Be sure to wear all required PPE while on the fire line.
ALL	POWER LINES	<ul style="list-style-type: none"> Be cautious if you encounter any down lines. Make appropriate notifications if found.
ALL	HYDRATION	<ul style="list-style-type: none"> Drink water before, during and after each shift. Be alert for signs of heat stress in yourself and others.
ALL	FIRE AND DROUGHT WEAKENED TREES/SNAG HAZARDS	<ul style="list-style-type: none"> Follow Hazard Tree Safety Guidelines (IRPG p. 22). Many of the trees within the fire area and along roadways are stressed due to drought conditions and burn times.
ALL	FIRING OPERATIONS	<ul style="list-style-type: none"> Monitor communications when firing operations are ongoing. Be aware where firing is taking place. Watch for residents in and around the area.
ALL	COMMUNICATIONS	<ul style="list-style-type: none"> Check the communication plan for frequency assignments. Be clear and concise when talking on the radio. Use human repeaters as needed.
ALL	BRIEFINGS	<ul style="list-style-type: none"> Make sure everyone gets a briefing on the plan for the day. Document this on your ICS 214.
ALL	LCES	<ul style="list-style-type: none"> Ensure that LCES is being utilized.
ALL	HELICOPTER AWARENESS	<ul style="list-style-type: none"> Watch for rotor wash when working near helicopters. Understand that hazardous trees may react to helicopters overhead. Monitor assigned aircraft frequencies.
ALL	HEAVY EQUIPMENT	<ul style="list-style-type: none"> Watch out for heavy equipment traffic! Be aware of heavy equipment working in the area. Be watchful around heavy equipment, they may not see you.
Incident Name: Hog Incident		Date Prepared: 7/21/2020 Prepared by: David Brockman SOF1 (T)
		Operational Period: 7/22/2020-7/23/2020 0700-0700

In readiness is all

ASSIGNMENT LIST (ICS 204 WF)

CONTROLLED UNCLASSIFIED
INFORMATION//BASIC

1. Incident Name: <p style="text-align: center; font-size: 1.2em;">Hog</p>	2. Operational Period: Date From: 07/22/20 Date To: 07/23/20 Time From: 0700 Time To: 0700	3. Branch Division <p style="text-align: center; font-size: 1.5em;">I A</p>
--	---	---

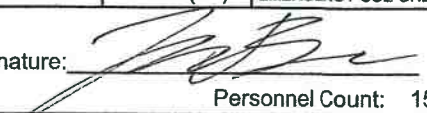
4. Operations Personnel: Operations Section Chief: S. NORMAN Branch Director: S. JERRY Division/Group Supervisor: J. KEOWN	Night Ops: J. OHS Branch Safety: S. LINK Air Attack:
---	--

5. Resources Assigned:	** Resources Below in Bold are 12 Hour **					Hours	Reporting Location
Resource Identifier	ALS	LWD	Leader	Personnel	Request #		
STC CZU 9171C				18 +/-	E-78	0700-0700	DP 1
STC MMU 9420C				18 +/-	E-65	0700-0700	DP 1
STC OES 3800C			C. BURNS	17	E-76	0700-0700	DP 1
STC SHF 3150C			J. FOLEY	17	E-47	0700-1900	DP 1
STC MNF 3646C			S. BANKS	27	E-46	0700-1900	DP 1
CRW T2 C-29			R. CASTRO	20	C-29	0700-1900	DP 1
CRW T2 C-31			J. COKE	20	C-31	0700-1900	DP 1
CRW T2 C-34			B. LARKIN	20	C-34	0700-1900	DP 1
CRW T2						0700-1900	DP 1
CRW T2						0700-1900	DP 1
DOZ PVT E-25					E-25	0700-0700	DP 1
DOZ PVT E-31					E-31	0700-0700	DP 1
DOZ PVT E-276					E-276	0700-0700	DP 1
DOZ PVT E-277					E-277	0700-0700	DP 1
WT PVT E-110					E-110	0700-0700	DP 1
WT PVT E-252					E-252	0700-0700	DP 1
WT PVT E-255					E-255	0700-0700	DP 1
WT						0700-0700	DP 1

6. Work Assignments:
Construct and hold line.
Conduct defensive firing operations as necessary.

7. Special Instructions:


8. Communications							
Name	Ch	Function	Rx Freq	Rx Tone	Tx Freq	Tx Tone	Notes
CDF C10	1	COMMAND	151.1900	103.5 (T8)	159.2250	167.9 (T7)	Roop Mountain
CDF C2	2	COMMAND	151.2650	103.5	159.3300	110.9 (T1)	Highway 36
CDF T29	5	TACTICAL	151.3475	192.8	151.3475	192.8	
CDF T23	14	AIR TO GROUND	159.4500	192.8 (T16)	159.4500	192.8 (T16)	
CALCORD	15	MEDICAL	156.0750N	T6 - 156.7	156.0750N	T6 - 156.7	
GUARD	16	EMERGENCY	168.6250	0.0	168.6250	110.9 (T1)	EMERGENCY USE ONLY

9. Prepared by: Name: T. BYRD RESL Signature: 

ICS 204 Date/Time: 7/21/2020 2200 Personnel Count: 157

ASSIGNMENT LIST (ICS 204 WF)

CONTROLLED UNCLASSIFIED
INFORMATION//BASIC

1. Incident Name:		2. Operational Period:				3. Branch		Division			
Hog		Date From: 07/22/20		Date To: 07/23/20		I		C			
		Time From: 0700		Time To: 0700							
4. Operations Personnel:						Page 1 of 1		Charlie			
Operations Section Chief: S. NORMAN				Night Ops: J. OHS							
Branch Director: S. JERRY				Branch Safety: S. LINK							
Division/Group Supervisor: TBD				Air Attack:							
5. Resources Assigned:		** Resources Below in Bold are 12 Hour **									
Resource Identifier	ALS	LWD	Leader	Personnel	Request #	Hours	Reporting Location				
STC NEU 9230C				18 +/-	E-26	0700-0700	DP 1				
STC 3630C						0700-1900	DP 1				
STC							DP 1				
STG BTU 9212G			K. FINKENKELLER	30	C-25	0700-0700	DP 1				
CRW T2 C-8			J. SCHROEDER	17	C-8	0700-1900	DP 1				
CRW T2 C-32			J. LOPEZ	20	C-32	0700-1900	DP 1				
CRW							DP 1				
CRW							DP 1				
CRW							DP 1				
DOZ HUU 1240			K. WOHLERS	4	E-89	0700-0700	DP 1				
DOZ CZU 1743			N. GUZMAN	2	E-158	0700-0700	DP 1				
DOZ BLM 3183						0700-1900	DP 1				
DOZ PVT E-105					E-105	0700-0700	DP 1				
DOZ PVT E-279			S. MOORE	2	E-279	0700-0700	DP 1				
WT PVT E-57			CARLTON		E-57	0700-0700	DP 1				
WT PVT E-111			J. STOVER	2	E-111	0700-0700	DP 1				
WT PVT E-113			E. LEEMAN	2	E-113	0700-0700	DP 1				
WT PVT E-250			R. LOGUE	2	E-250	0700-0700	DP 1				
6. Work Assignments:											
Construct and hold line.											
Conduct defensive firing operations as necessary.											
7. Special Instructions:											
8. Communications											
Name	Ch	Function	Rx Freq	Rx Tone	Tx Freq	Tx Tone	Notes				
CDF C10	1	COMMAND	151.1900	103.5 (T8)	159.2250	167.9 (T7)	Roop Mountain				
CDF C2	2	COMMAND	151.2650	103.5	159.3300	110.9 (T1)	Highway 36				
CDF T31	7	TACTICAL	159.3825	192.8	159.3825	192.8					
CDF T23	14	AIR TO GROUND	159.4500	192.8 (T16)	159.4500	192.8 (T16)					
CALCORD	15	MEDICAL	156.0750N	T6 - 156.7	156.0750N	T6 - 156.7					
GUARD	16	EMERGENCY	168.6250	0.0	168.6250	110.9 (T1)	EMERGENCY USE ONLY				
9. Prepared by: Name:		T. BYRD			RESL			Signature: 			
ICS 204		Date/Time: 7/21/2020			2200			Personnel Count: 99			

ASSIGNMENT LIST (ICS 204 WF)

CONTROLLED UNCLASSIFIED
INFORMATION//BASIC

1. Incident Name: <p style="text-align: center; font-size: 1.2em;">Hog</p>	2. Operational Period: Date From: 07/22/20 Date To: 07/23/20 Time From: 0700 Time To: 0700	3. Branch Division <p style="text-align: center; font-size: 1.5em;">I D</p>
4. Operations Personnel:		Page 1 of 1 Delta

Operations Section Chief: S. NORMAN Branch Director: S. JERRY Division/Group Supervisor: TBD	Night Ops: J. OHS Branch Safety: S. LINK Air Attack:
---	--

5. Resources Assigned:	** Resources Below in Bold are 12 Hour **							
Resource Identifier	ALS	LWD	Leader	Personnel	Request #	Hours	Reporting Location	
STC						0700-0700	DP 1	
STF						0700-0700	DP 1	
CRW LNF T2						0700-1900	DP 1	
CRW							DP 1	
CRW							DP 1	
CRW							DP 1	
DOZ LMU 2240			R. DAVIS	2	E-208	0700-0700	DP 1	
DOZ TGU 2544				2	E-36	0700-0700	DP 1	
MAST						0700-1900	DP 1	
MAST						0700-1900	DP 1	
CHIP						0700-1900	DP 1	
CHIP						0700-1900	DP 1	
FALM						0700-1900	DP 1	

6. Work Assignments:
 Construct and hold line.
 Conduct defensive firing operations as necessary.

7. Special Instructions:

8. Communications							
Name	Ch	Function	Rx Freq	Rx Tone	Tx Freq	Tx Tone	Notes
CDF C10	1	COMMAND	151.1900	103.5 (T8)	159.2250	167.9 (T7)	Roop Mountain
CDF C2	2	COMMAND	151.2650	103.5	159.3300	110.9 (T1)	Highway 36
CDF T31	7	TACTICAL	151.2425	192.8	151.2425	192.8	
CDF T23	14	AIR TO GROUND	159.4500	192.8 (T16)	159.4500	192.8 (T16)	
CALCORD	15	MEDICAL	156.0750N	T6 - 156.7	156.0750N	T6 - 156.7	
GUARD	16	EMERGENCY	168.6250	0.0	168.6250	110.9 (T1)	EMERGENCY USE ONLY

9. Prepared by: Name:	T. BYRD	RESL	Signature:
ICS 204	Date/Time: 7/21/2020	2200	Personnel Count: 4

ASSIGNMENT LIST (ICS 204 WF)

CONTROLLED UNCLASSIFIED
INFORMATION//BASIC

1. Incident Name: <p style="text-align: center; font-size: 1.2em;">Hog</p>	2. Operational Period: Date From: 07/22/20 Date To: 07/23/20 Time From: 0700 Time To: 0700	3. Branch Division <p style="text-align: center; font-size: 1.5em;">I E</p> Page 1 of 2 Echo
--	---	---

4. Operations Personnel:	
Operations Section Chief: S. NORMAN Branch Director: S. JERRY Division/Group Supervisor: LOPEZ	Night Ops: J. OHS Branch Safety: S. LINK Air Attack:

5. Resources Assigned:	** Resources Below in Bold are 12 Hour **						
Resource Identifier	ALS	LWD	Leader	Personnel	Request #	Hours	Reporting Location
STC XPL 4127C			M. LAUCHER	19	E-84	0700-0700	DP 1
STC XSJ 4178C			S. ARGANBRIGHT	18	E-82	0700-0700	DP 1
CRW REDDING IHC			D. MALLIA	18		0700-1900	DP 1
CRW LASSEN IHC						0700-1900	DP 1
CRW BECKWOTH IHC						0700-1900	DP 1
CRW T1							DP 1
CRW T1							DP 1
CRW T1							DP 1
DOZ LMU 2241			B. MALLERY	2	E-5	0700-0700	DP 1
DOZ PVT E-104				1	E-104	0700-0700	DP 1
DOZ T1							DP 1
DOZ T1							DP 1
WT PVT E-42				2	E-42	0700-0700	DP 1
WT PVT E-114			J. SHELTON	2	E-114	0700-0700	DP 1
WT							DP 1
WT							DP 1
FALM							DP 1
FALM							DP 1

6. Work Assignments:
Construct and hold line.
Conduct defensive firing operations as necessary.

7. Special Instructions:

8. Communications							
Name	Ch	Function	Rx Freq	Rx Tone	Tx Freq	Tx Tone	Notes
CDF C10	1	COMMAND	151.1900	103.5 (T8)	159.2250	167.9 (T7)	Roop Mountain
CDF C2	2	COMMAND	151.2650	103.5	159.3300	110.9 (T1)	Highway 36
CDF T31	7	TACTICAL	151.2425	192.8	151.2425	192.8	
CDF T23	14	AIR TO GROUND	159.4500	192.8 (T16)	159.4500	192.8 (T16)	
CALCORD	15	MEDICAL	156.0750N	T6 - 156.7	156.0750N	T6 - 156.7	
GUARD	16	EMERGENCY	168.6250	0.0	168.6250	110.9 (T1)	EMERGENCY USE ONLY

9. Prepared by: Name:	T. BYRD	RESL	Signature:
ICS 204	Date/Time: 7/21/2020	2200	Personnel Count: 62

NIMS IAP

CONTROLLED UNCLASSIFIED INFORMATION//BASIC

ASSIGNMENT LIST (ICS 204 WF)

CONTROLLED UNCLASSIFIED
INFORMATION/BASIC

1. Incident Name: <p style="text-align: center; font-size: 1.2em;">Hog</p>	2. Operational Period: Date From: 07/22/20 Date To: 07/23/20 Time From: 0700 Time To: 0700	3. Branch Division <p style="text-align: center; font-size: 1.5em;">V F</p>
--	---	---

4. Operations Personnel:		Page 1 of 1 Foxtrot
Operations Section Chief: S. NORMAN Branch Director: R. DANIELSON Division/Group Supervisor: TBD	Night Ops: J. OHS Branch Safety: Air Attack:	

5. Resources Assigned:		** Resources Below in Bold are 12 Hour **						
Resource Identifier	ALS	LWD	Leader	Personnel	Request #	Hours	Reporting Location	
STC LMU HOG 1			J. SALTZMAN			0700-0700	DP 50	
ENG LMU 2261			T, HAUGH	3	E-8		DP 50	
ENG LMU 2262			R. KINGORI	3	E-12		DP 50	
ENG LMU 2263			E. HALTOM	3	E-13		DP 50	
ENG LMU 2272			J, SYBERHANUD	3	E-20		DP 50	
ENG LMU 2283			J. SALTZMAN	3			DP 50	
CRW T2 C-33			S. LANGBERG	20	C-33	0700-1900	DP 50	
CRW T2						0700-1900	DP 50	
DOZ PVT E-93			C. BARAJAS	2	E-93	0700-0700	DP 50	
DOZ PVT E-106			E. NOBLE	2	E-106	0700-0700	DP 50	
MAST						0700-1900	DP 50	
MAST						0700-1900	DP 50	
FELB						0700-1900	DP 50	
FELB						0700-1900	DP 50	
FALM						0700-1900	DP 50	

6. Work Assignments:
Construct and hold line

7. Special Instructions:

8. Communications							
Name	Ch	Function	Rx Freq	Rx Tone	Tx Freq	Tx Tone	Notes
CDF C10	1	COMMAND	151.1900	103.5 (T8)	159.2250	167.9 (T7)	Roop Mountain
CDF C2	2	COMMAND	151.2650	103.5	159.3300	110.9 (T1)	Highway 36
CDF T30	6	TACTICAL	151.3925	192.8	151.3925	192.8	
CDF T23	14	AIR TO GROUND	159.4500	192.8 (T16)	159.4500	192.8 (T16)	
CALCORD	15	MEDICAL	156.0750N	T6 - 156.7	156.0750N	T6 - 156.7	
GUARD	16	EMERGENCY	168.6250	0.0	168.6250	110.9 (T1)	EMERGENCY USE ONLY

9. Prepared by: Name:	T. BYRD	RESL	Signature:	Personnel Count: 39
------------------------------	---------	------	------------	---------------------

ICS 204
NIMS IAP

Date/Time: 7/21/2020 2200

CONTROLLED UNCLASSIFIED INFORMATION/BASIC

ASSIGNMENT LIST (ICS 204 WF)

CONTROLLED UNCLASSIFIED
INFORMATION//BASIC

1. Incident Name: <p style="text-align: center; font-size: 1.2em;">Hog</p>	2. Operational Period: Date From: 07/22/20 Date To: 07/23/20 Time From: 0700 Time To: 0700	3. Branch Division <p style="text-align: center; font-size: 1.5em;">IX O</p>
4. Operations Personnel:		Page 1 of 2 Oscar

Operations Section Chief: S. NORMAN Branch Director: J. PIERCE / J. GAHAGAN (T) Division/Group Supervisor: N. GARCIA / W. DARNALL (T)	Night Ops: J. OHS Branch Safety: J. WILLIAMS Air Attack:
--	--

5. Resources Assigned:	** Resources Below in Bold are 12 Hour **						
Resource Identifier	ALS	LWD	Leader	Personnel	Request #	Hours	Reporting Location
STC CZU 9170C			C. JACOBSEN	16	E-64	0700-0700	DP 91
STC SHU 9243C				18 +/-	E-27	0700-0700	DP 91
STC XED 4077C							DP 91
CRW T2 C-27			C. MCDERMOTT-ROE	20	C-27	0700-1900	DP 91
CRW T2 C-28			A. MENDOZA	20	C-28	0700-1900	DP 91
CRW T2 C-30			L.TANIA	20	C-30	0700-1900	DP 91
CRW							DP 91
CRW							DP 91
CRW							DP 91
DOZ CZU 1741			C. GAAL	3	E-90	0700-0700	DP 91
DOZ BTU 2140			Z. GUYZMAN	3	E-50	0700-0700	DP 91
DOZ BTU 2142						0700-0700	DP 91
DOZ PVT E-101			T. PARKS	1	E-101	0700-0700	DP 91
DOZ PVT E-102			M. MURDOCK	1	E-102	0700-0700	DP 91
DOZ PVT E-278			B. FIELDS	1	E-278	0700-0700	DP 91
WT PVT E-44			P. MARYMEE	2	E-44	0700-0700	DP 91
WT PVT E-108			M. SISSON	2	E-108	0700-0700	DP 91
WT PVT E-109			D. OAILAR	2	E-109	0700-0700	DP 91

6. Work Assignments:
Construct and hold line

7. Special Instructions:

8. Communications

Name	Ch	Function	Rx Freq	Rx Tone	Tx Freq	Tx Tone	Notes
CDF C10	1	COMMAND	151.1900	103.5 (T8)	159.2250	167.9 (T7)	Roop Mountain
CDF C2	2	COMMAND	151.2650	103.5	159.3300	110.9 (T1)	Highway 36
VFIRE 25	11	TACTICAL	154.2875N	T6 - 156.7	154.2875N	T6 - 156.7	
CDF T23	14	AIR TO GROUND	159.4500	192.8 (T16)	159.4500	192.8 (T16)	
CALCORD	15	MEDICAL	156.0750N	T6 - 156.7	156.0750N	T6 - 156.7	
GUARD	16	EMERGENCY	168.6250	0.0	168.6250	110.9 (T1)	EMERGENCY USE ONLY

9. Prepared by: Name: T. BYRD RESL

Signature: Personnel Count: 109

ICS 204 Date/Time: 7/21/2020 2200

ASSIGNMENT LIST (ICS 204 WF)

CONTROLLED UNCLASSIFIED
INFORMATION//BASIC

1. Incident Name: <p style="text-align: center; font-size: 1.2em;">Hog</p>	2. Operational Period: Date From: 07/22/20 Date To: 07/23/20 Time From: 0700 Time To: 0700	3. Branch Division <p style="text-align: center; font-size: 1.5em;">IX Q</p>
4. Operations Personnel:		Page 1 of 2 Quebec

Operations Section Chief: S. NORMAN	Night Ops: J. OHS
Branch Director: J. PIERCE / J. GAHAGAN (T)	Branch Safety: J. WILLIAMS
Division/Group Supervisor: J. REYES / J. BAKER	Air Attack:

5. Resources Assigned:	** Resources Below in Bold are 12 Hour **						
Resource Identifier	ALS	LWD	Leader	Personnel	Request #	Hours	Reporting Location
STC MRN 9150C			T. NUNES	19	E-77	0700-0700	DP 90
STC BTU 9211C			J. MORRIS	19	E-6	0700-0700	DP 90
STC XNE 4101C			J. SMITH	19	E-83	0700-0700	DP 90
STG TGU 9252G			L. THOMAS		C-7	0700-0700	DP 90
STG AEU 9275G			M. BOYCE		C-26	0700-0700	DP 90
CRW T2 C-37			D. DUFFY	20	C-37	0700-1900	DP 90
CRW T2 C-38			J. FOWARD	20	C-38	0700-0700	DP 90
STL LNU 9143L			B. MADOLE	8	E-35	0700-0700	DP 90
DOZ MEU 1145			M. WILSON	3	E-88	0700-0700	DP 90
DOZ LMU 2244						0700-0700	DP 90
DOZ AEU 2744			M. FISCHER	4	E-87	0700-0700	DP 90
DOZ PVT E-92			T. HALTER	2	E-92	0700-0700	DP 90
DOZ PVT E-95			P. TARBUSH	1	E-95	0700-0700	DP 90
DOZ PVT E-97			Z. STEVENSON	1	E-97	0700-0700	DP 90
DOZ PVT E-142					E-142	0700-0700	DP 90
DOZ PVT E-259			M. BASCHAM	2	E-259	0700-0700	DP 90
DOZ PVT E-262			M. SWANK	3	E-262	0700-0700	DP 90
WT PVT E-56			CARLTON		E-56	0700-0700	DP 90

6. Work Assignments:
Construct and hold line

7. Special Instructions:

8. Communications

Name	Ch	Function	Rx Freq	Rx Tone	Tx Freq	Tx Tone	Notes
CDF C10	1	COMMAND	151.1900	103.5 (T8)	159.2250	167.9 (T7)	Roop Mountain
CDF C2	2	COMMAND	151.2650	103.5	159.3300	110.9 (T1)	Highway 36
VFIRE 26	12	TACTICAL	154.3025N	T6 - 156.7	154.3025N	T6 - 156.7	
CDF T23	14	AIR TO GROUND	159.4500	192.8 (T16)	159.4500	192.8 (T16)	
CALCORD	15	MEDICAL	156.0750N	T6 - 156.7	156.0750N	T6 - 156.7	
GUARD	16	EMERGENCY	168.6250	0.0	168.6250	110.9 (T1)	EMERGENCY USE ONLY

9. Prepared by: Name: T. BYRD RESL

Signature: Personnel Count: 121

ICS 204 Date/Time: 7/21/2020 2200

AIR OPERATIONS SUMMARY ICS-220

Incident Name / Incident Number
CALMU 3874

Sunrise 555 **Startup** 625 **Cutoff** 1957 **Sunset** 2027

General Remarks, Safety Notes, Hazards, Air Operations Special Equipment, etc.
TRACK ALL DIPSITE LOCATIONS / NUMBER OF DIPS / GALLONS TAKEN.
TRACK ALL DROP LOCATIONS / NUMBER OF DROPS / GALLONS DROPPED
ALL GPS DATA TO BE COLLECTED IN DEGREES, MINUTES, DECIMAL MINUTES FORMAT.
AVOID Aerial Application of Retardant / Foam / Agent within 300' of Waterways, Bodies of Water, etc.
If Retardant / Foam / Agent is Dropped Within These Areas Immediately Notify the AOB and Provide the Following Information: Lat / Long, Estimated Number of Gallons and a Map Detailing The Area.

Time Prepared
1900

Shutdown
2057

Helibase Information
Name: Meadow
Latitude: 40 18.279
Longitude: 120 57.092

Name:
Latitude:
Longitude:
(use page 2 if needed)

Date Prepared
Tuesday, July 21, 2020

Operational Period - Date
Wednesday, July 22, 2020

Request #
Radius: See NM
Altitude: FAA MSL
Centerpoint: Website Lat Long

NOTAMS:
Frequency:
<http://tfr.faa.gov/tfr2/list.html>

Frequencies	RX	Tone	TX	Tone	AM / FM	Position	Name	Phone	Trainee Name	Phone
AIR TACTICS	167.0750		167.0750		FM	AOBD	Matt Stanford	951.545.9205	Shem Hawkins	530.990.5128
AIR / AIR Rotary Wing	118.0750		118.0750		AM	ASGS	Chris Willson	530.448.2408		
AIR / AIR - Briefing	122.2750		122.2750		AM	HEBM	Ryan Johnson	530.340.3099		
AIR / GROUND - Command					FM	ATGS	Skye McGregor	530.895.6505		
AIR / GROUND - Tactical	T23 159.450	192.8	T23 159.450	192.8	FM	HLCO	Brian Renner	707.499.2247		
COMMAND	151.1900	103.5	159.2200	OST	FM	HLCO	Logan Kalfsbeck	530.723.0367		
TOLC	123.0250		123.0250		AM					
DECK	163.1000		163.1000		FM					
CALCORD - MEDICAL	166.0750	156.7 (6)	166.0750	156.7 (6)	FM					
AIRGAURD - Emergency Only	168.6250		168.6250	110.9 (1)	FM					

HELICOPTERS (Use page 2 if Needed)

FAA #	Type	Make/Model	Helibase	Avail	Start	Remarks	FAA #	Type	Make/Model	Helibase	Avail	Start	Remarks
01AJ	I	234	Meadow	800	830	A-53	510	II	212	Chester	800	830	A-73
51BH	I	UH60	Meadow	800	830	A-54							
13FH	I	UH60	Meadow	800	830	A-70							
70K	I	UH60	Meadow	800	830	A-69							
96W	I	S61	Meadow	800	830	A-68							
36BH	I	UH60	Meadow	800	830	A-33							
17FH	I	UH60	Meadow	800	830	A-32							
82BH	I	UH60	Meadow	800	830								
							242H	III	L206	Meadow	8	830	HLCO - Blue - A72
							839PA	III	A350	Meadow	800	830	HLCO - Red - A24
							553	III	407	Ravendale	800	830	A-11
							509	III	Cobra	Chester	800	830	IR-A35

FIXED WING (Use Page 2 if Needed)

FAA #	Type	Make/Model	Base	Avail	Start	Remarks	FAA #	Type	Make/Model	Base	Avail	Start	Remarks


ICS 205 - INCIDENT RADIO COMMUNICATIONS PLAN

CONTROLLED UNCLASSIFIED INFORMATION//BASIC

1. Incident Name: Hog Incident Channels	2. Date/Time Prepared Date: 07/21/2020 Time: 2000	3. Operational Period: Date From: 07/22/20 Time From: 0700
4. Communications		

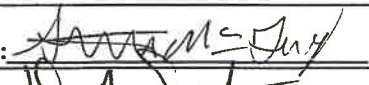
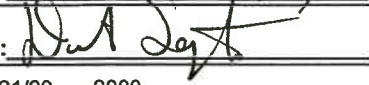
Ch#	Function	Name	Assigned To	Rx Freq	Rx Tone	Tx Freq	Tx Tone	Notes
1	COMMAND	CDF C10	ALL DIVISIONS	151.1900	103.5 (T8)	159.2250	167.9 (T7)	Roop Mountain
2	COMMAND	CDF C2	ALL DIVISIONS	151.2650	103.5 (T8)	159.3300	110.9 (T1)	Highway 36
3								
4								
5	TACTICAL	CDF T29	DIV A and CONT.	151.3475	192.8 (T16)	151.3475	192.8 (T16)	
6	TACTICAL	CDF T30	DIV F/G	151.3925	192.8 (T16)	151.3925	192.8 (T16)	
7	TACTICAL	CDF T31	DIV C/D/E	159.3825	192.8 (T16)	159.3825	192.8 (T16)	
8								
9								
10	TACTICAL	VFIRE 24	DIV J/L	154.2725	156.7 (T6)	154.2725	156.7 (T6)	
11	TACTICAL	VFIRE 25	DIV O	154.2875	156.7 (T6)	154.2875	156.7 (T6)	
12	TACTICAL	VFIRE 26	DIV Q/R	154.3025	156.7 (T6)	154.3025	156.7 (T6)	
13	TACTICAL	VTAC 14	BRIEFING	159.4725	156.7 (T6)	159.4725	156.7 (T6)	
14	AIR TO GROUND	CDF T23	ALL DIVS	159.4500	192.8 (T16)	159.4500	192.8 (T16)	
15	MEDICAL	CALCORD	ALL DIVS	156.0750	156.7 (T6)	156.0750	156.7 (T6)	
16	EMERGENCY	GUARD	ALL BRANCHES	168.6250	0.0	168.6250	110.9 (T1)	EMERGENCY USE ONLY
17								
18								
19								
20	EMERGENCY	GUARD	ALL BRANCHES	168.625	0.0	168.625	110.9 (T1)	EMERGENCY USE ONLY

5. Special Instructions

6. Prepared by (Communications Unit Leader): Name: KYLE JOHNSON	Signature: 
ICS 205 - CONTROLLED UNCLASSIFIED INFORMATION//BASIC	NIMS IAP Date/Time: 7/21/2020 2000

RADIO BRIEFING
WILL BE BROADCAST ON
VTAC 14

MEDICAL PLAN (ICS 206)

1. Incident Name: <p style="text-align: center; margin-top: 10px;">Hog</p>		2. Operational Period: Date From: 7/22/20 Date To: 7/23/20 Time From: 0700 Time To: 0700					
3. Medical Aid Stations:							
Name	Location	Contact Number/Freq	Paramedics				
CAL MAT	ICP	916-247-1940/ Hog Comms	Yes				
4. Transportation (indicate air or ground):							
Ambulance Service	Location	Contact Number	Level of Service				
Plumas 12	DP 91	530-257-1803/ Hog Coms	ALS				
Semsa Air 1	1800 Spring Ridge Dr, Susanville	866-297-1352/ Hog Coms	ALS				
PHI Med 45	471-920 Johnsonville Dr, Susanville	800-597-9571/ Hog Coms	ALS				
5. Hospitals:							
Hospital Name	Address,	Contact Number(s)/ Frequency	Travel Time		Trauma Center	Burn Center	Helipad
	Lat & Long		Air	Ground			
Banner Lassen Hospital	1800 Spring Ridge Dr Susanville, CA N 40 26.2843, W -120 37.6651	(530) 252-2000	5 min	10 min		<input type="checkbox"/>	<input checked="" type="checkbox"/>
Dignity Health Mercy Medical Center Redding	2175 Rosaline Ave, Redding,	(530) 225-6000	39 min	2 hr	Level 2	<input type="checkbox"/>	<input checked="" type="checkbox"/>
UC Davis Medical Center	2315 Stockton Blvd Sacramento, CA	(916) 734-3636	1hr	3 hr	Level 1	<input checked="" type="checkbox"/>	<input checked="" type="checkbox"/>
Renown Regional Medical Center	1155 Mill Street, Reno, NV 89502, Lat/Long: 39.52552, -119.7952114	(775) 982-4100	32 min	2 hr	Level 2	<input type="checkbox"/>	<input checked="" type="checkbox"/>
						<input type="checkbox"/>	<input type="checkbox"/>
6. Special Medical Emergency Procedures							
Line Emergency Crew Supervisor will contact Division Supervisor with patient complaint/condition and location. - Division Group Supervisor Contacts: 1. Closest EMS resource 2. Communications Unit - Communications Unit Contacts: 1. Ground or Air ambulance as requested. 2. Operations 3. Safety 4. Medical Unit - Division Supervisor or designee will serve as point of contact and run medical emergency on assigned channel. 1. A pre-assigned tactical frequency (i.e. CALCORD) should be used for IWL and only for duration of the emergency. - Communications Unit will clear the Command channel for emergency traffic as needed for duration of the need.				Injury Reporting Procedures Nature of Injury: _____ Location of Patient: _____ Point of Contact: _____ Transportation Requested by: Air _____ Ground _____ Point of Pick-Up: _____ Lat: _____ Long: _____ Patient Unit ID: _____ Is an EMT with Patient: Yes _____ No _____ Age: _____ Sex: Male _____ Female _____			
Camp Emergency Contact Medical Unit with patient complaint/condition and location. Medical staff will respond to stabilize the patient. - Medical Unit contacts 1. Communications 2. Safety 3. Logistics 4. Operations 5. Crew Supervisor 6. Comp/Claims				All Emergencies - Secure the area and identified witnesses for later investigation. Keep accurate log of events.			
<input type="checkbox"/> Check box if aviation assets are utilized for rescue. If assets are used, coordinate with Air Operations.							
7. Prepared by (Medical Unit Leader):				Signature: 			
S. McGary				D. SARGENTI / D. BROCKMAN (T)			
8. Approved by (Safety Officer):				Signature: 			
ICS 206		NIMS IAP		Date/Time: 7/21/20 2000			



CAL FIRE INCIDENT
MANAGEMENT TEAM 3



TRAINING SPECIALIST MESSAGE

A Training Specialist is now on the Incident.

All assigned trainees working on Position Task Books will need to register with the Incident Training Specialist in order to receive documented credit for your assignment.

Bring the following with you to register:

- Incident Qualification Card
- Initiated Position Task Book
- Trainee Registration form

Only two members will be allowed in the trailer at a time

Face coverings will be required prior to entering trailer

Justin Voyson TNSP 661-547-8629

INCIDENT TRAINEE REGISTRATION FORM

HOG INCIDENT CA-LMU-003874 JUSTIN VOYSON TNSP 661-547-8629

Complete ALL fields and return to Training Specialist or DROP BOX for entry into database.

Remember to close out training packets with the Training Specialist before DEMOB.

TRAINEE'S DATA

Name (PRINT): _____ ICS Trainee Position: _____

Request # (A,C,E,or O): _____ Agency Designator (Ex. CA-LMU): _____

USFS ___ State ___ BLM ___ BIA ___ NPS ___ FWS ___ Local Govt. ___ DOD ___ NWS ___

(CAL FIRE ONLY) Were You Assigned From a Priority Trainee Roster? Yes No

Ordered as a Trainee? Yes No

Date Assigned: _____ Cell Phone: _____

Your Qualifications Coordinator: (Chief, Training Officer, etc.)

Name: _____

Name of Home Unit: _____

Address: _____

City: _____ State: _____ Zip Code: _____ Phone: _____

Training Officer's Email Address _____

TRAINEE PREREQUISITES

1. Valid Red Card or agency certification card? _____ Yes _____ No

2. Trainee has current position task book issued by home unit? _____ Yes _____ No

Current Task Book Progress: (Circle) 0% 25% 50% 75% 90%

Priority Open Tasks in Your Position Task Book

1) _____

2) _____

YOUR TRAINER/EVALUATOR'S DATA

Trainer/Evaluator Name: _____ ICS position on Incident _____

Home Unit: _____ Agency Designator (ex. CA-LMU): _____

Work Address: _____ City: _____

State: _____ Zip Code: _____ Cell Phone: _____



PUBLIC INFORMATION SECTION



Incident Information Line: (530) 282-5714
Incident Media Line: (530) 282-5714

Incident Updates:
www.fire.ca.gov/current_incidents

STATUS	
Incident Start Date: 7/18/2020	Incident Start Time: 3:30 PM
Cause: Under Investigation	Acres:
Containment:	Total Personnel:

MEDIA – The California State Penal Code Section 409.5(d) allows the news media to enter scenes of disaster, riot or civil disturbance. Properly identified members of the news media should not be restricted from entering locations specified within the code. However, this does not include crime scenes, private property and does not imply that the news media may interfere with incident operations while they are in the areas of concern. More information can be found [here](#).

CAL FIRE SOCIAL MEDIA POLICY – When assigned to a CAL FIRE incident, you will adhere to the CAL FIRE Social Media Policy, Section 0691. You can find further information about the CAL FIRE Social Media Policy [here](#).

PHOTOGRAPHS AND VIDEOS OF INCIDENT – We are in a new era of media. Media no longer means news/broadcast industry, but now refers to anyone that has the capability to shoot video, photographs and post them onto social media sites in a matter of minutes. Unfortunately, we have seen some instances of photographs or videos that have depicted unsafe, unprofessional or embarrassing circumstances which are a serious breach of ethics. When this happens, it reflects poorly on all that are attached to this incident. Posting an inappropriate video, photo or blog comment could expose oneself to unwanted ramifications. It may be unsafe to shoot photos or video and a firefighter who is concentrating on a camera loses their situational awareness.

The Public Information Office would like copies of the video and pictures that you safely took while not in an emergency situation, fire suppression activity or in an overhead assignment. Bring your video and pictures to the Public Information trailer; they will be reviewed and possibly uploaded to our many CAL FIRE social media sites. Remember, we don't want photographs or videos that depict unsafe, unprofessional or embarrassing circumstances, which are a serious breach of ethics.

LOST AND FOUND – The Information Section will manage lost and found items for the incident. If you have lost an item please leave your contact information and what you have lost at the Information Section. If you have found an item on the incident, bring the item to the Information Section with your contact information as well. All items left in Lost and Found will be turned over to the local CAL FIRE Shasta Unit.

MAIL SERVICE – The Information Section can assist you with sending and receiving mail.



FINANCE SECTION MESSAGE



CAL FIRE staff; please ensure you start your eFC-33s with the Personnel Time Recorder.

Please make sure hired equipment shift tickets are completed for all private vendors and dropped off in the Time Unit by agency personnel / line supervisors only, as well as EERAs.

Please report all injuries and suppression damage to the Comp / Claims Unit, no matter how minor.

The Finance Section is located in the grass area across from briefing.

Federal and Contract resources need to check-in with the Federal Time Unit.

OES is located in the back of fairgrounds.

**ROGER RAINES, FSC1
TERRY EASTWOOD, DEP. FSC1**

Finance Me\$\$\$age

EMERGENCY SHIFT TICKET and EVALUATION FORM					Contractor Name		
The responsible Government Officer will complete this form each shift					Fireline Builders		
Incident or Project Name HOG		Incident Number CA-LMU-003874		Request Number E # Here		Operator #1 Bob Smith	
Operator #2 Jeff Smith		Agreement Number Obtain from vendor's agreement					
Equipment Make CAT		Equipment Model / Type D6N, Type II E				Operator Furnished By: <input checked="" type="checkbox"/> Contractor <input type="checkbox"/> Government	
Serial Number 6LN3344		Licence Number				Operating Supplies Furnished By: <input checked="" type="checkbox"/> Contractor <input type="checkbox"/> Government	
Equipment Use					Equipment Status		
(Circle) Hours / Days / Miles					<input checked="" type="checkbox"/> Inspected <input checked="" type="checkbox"/> Under Agreement		
Date	Start	Stop	Work	Assignment	Released by Government		
Mo / Day					Withdrawn by Contractor		
7/28	0700	2400	16	Division B	NO DAMAGE / NO CLAIMS		
7/28	0001	0700	8	Division B			
Vendor Rating					Govt. Rep. Name and Position - PRINT		
Poor* Avg. Good Exc. N/A					Mike Weber Div. A		
Met Performance Expectations					Govt. Rep. Signature		
Equipment in Safe Working Condition					<i>Mike Weber</i>		
Operator Skill Level					Contractor Signature		
Operates Safely					<i>Bob Smith</i>		
Operator's Cooperation Level					Date		
Overall Performance					Time		
					07/20/20 0800		
* NOTE: Any rating of POOR requires an explanation in Comment Section.					CALFIRE 297		
**Final evaluation or for more documentation, use an ICS Form 230 or equivalent.					(Rev 3-2011)		
Pink - Finance		Blue - Home Unit HE Coordinator		Yellow - Vendor		White - Govt Representative	

EMERGENCY SHIFT TICKET and EVALUATION FORM					Contractor Name		
The responsible Government Officer will complete this form each shift					Fireline Builders		
Incident or Project Name Hog		Incident Number CA-LMU-003874		Request Number E # Here		Operator #1 Bob Smith	
Operator #2		Agreement Number Obtain from vendor's agreement					
Equipment Make CAT		Equipment Model / Type D6N, Type II E				Operator Furnished By: <input checked="" type="checkbox"/> Contractor <input type="checkbox"/> Government	
Serial Number 6LN3344		Licence Number				Operating Supplies Furnished By: <input checked="" type="checkbox"/> Contractor <input type="checkbox"/> Government	
Equipment Use					Equipment Status		
(Circle) Hours / Days / Miles					<input checked="" type="checkbox"/> Inspected <input checked="" type="checkbox"/> Under Agreement		
Date	Start	Stop	Work	Assignment	Released by Government		
Mo / Day					Withdrawn by Contractor		
7/28	0001	0700	6	Off Shift	NO DAMAGE / NO CLAIMS		
7/28	0701	1900	12	Division B			
7/28	1901	2400	6	Off Shift			
Vendor Rating					Govt. Rep. Name and Position - PRINT		
Poor* Avg. Good Exc. N/A					Mike Weber Div. A		
Met Performance Expectations					Govt. Rep. Signature		
Equipment in Safe Working Condition					<i>Mike Weber</i>		
Operator Skill Level					Contractor Signature		
Operates Safely					<i>Bob Smith</i>		
Operator's Cooperation Level					Date		
Overall Performance					Time		
					07/20/20 0600		
* NOTE: Any rating of POOR requires an explanation in Comment Section.					CALFIRE 297		
**Final evaluation or for more documentation, use an ICS Form 230 or equivalent.					(Rev 3-2011)		
Pink - Finance		Blue - Home Unit HE Coordinator		Yellow - Vendor		White - Govt Representative	

FIRING PLAN AND GO / NO GO CHECKLIST

Test Firing Plan

The size and location of the test burn will be large enough and representative of the fuels of the proposed burn area.

Communications:

A radio net announcement at the incident will be made prior to firing operations. This will be communicated on tactical and command nets and will identify general location of geographic area to be burned. Special frequencies may or may not be used.

Frequencies:

- 1. Firing Group Tactical
2. Air to Ground
3. Aerial ignition discreet frequencies:

Slop-overs and Escapes:

If an escape/slop-over occurs notify the Division/Group Supervisor, who will take appropriate suppression actions. The Firing Group Supervisor will evaluate whether or not to continue firing and communicate such to the Division Group Supervisor. At all times, appropriate information will be transmitted through the chain of command to the Operations Section Chief.

Perimeter Firing Sequence:

The perimeter firing will proceed as follows:

Conditions:

Observed weather conditions: See IAP Weather Forecast
Fire Behavior Burn Index: See IAP Fire Behavior Analysis

Sequence of Firing:

Table with 5 rows for sequence of firing steps.

Aerial Ignition Plan (Section 8344.5 of the CAL FIRE 8300 manual):

Table with 5 rows for aerial ignition plan steps.

GO / NO-GO

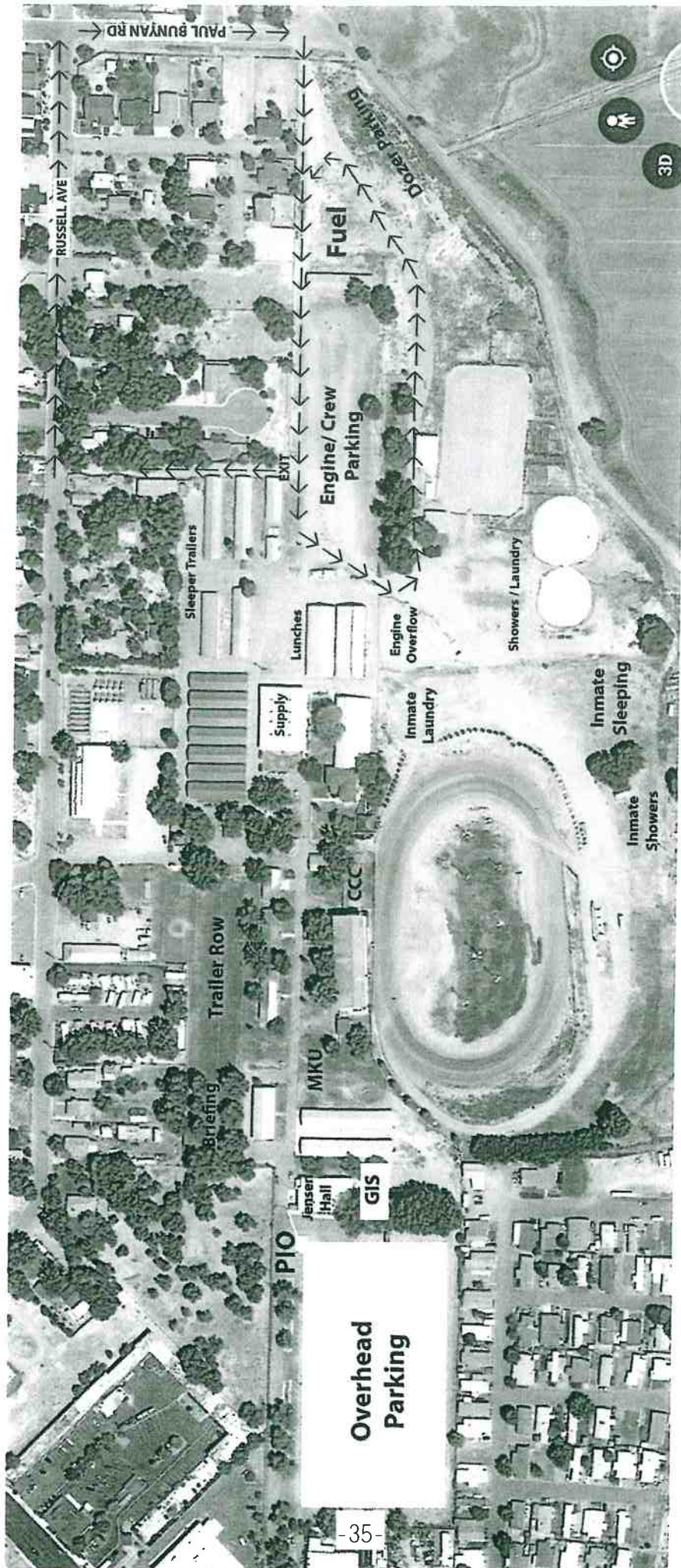
- Checklist items: All personnel briefed, Weather forecast reviewed, Resources in place, Lookouts posted, Communications systems in place, Escape routes and safety zones established and made known, Fire behavior forecast reviewed, Test Fire is favorable

APPROVALS and Initials

- Approval lines for: Firing Group Supervisor, Division Supervisor, Branch Director, Air Operations Branch Director, Operations Chief, Safety Officer, Incident Commander

Prepared by:
Agency/Unit:
Date:

Base Camp Map Lassen County Fairgrounds





Travel Map

HOG INCIDENT

CA-LMU-003874

