

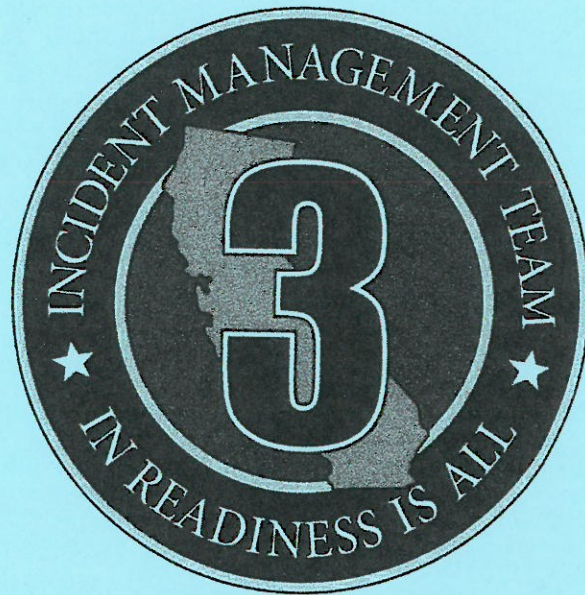
**\*\*CORRECTED\*\***

# INCIDENT ACTION PLAN

## HOG INCIDENT

CA-LMU-003874

Friday



### OPERATIONAL PERIOD


7/24/2020 0700  
to  
7/25/2020 0700







## ORGANIZATION ASSIGNMENT LIST (ICS 203)

<b>1. Incident Name:</b> Hog		<b>2. Operational Period: Date From:</b> 7/24/2020		<b>Date To:</b> 7/25/2020	
		<b>Time From:</b> 0700		<b>Time To:</b> 0700	
<b>3. Incident Commander(s) and Command Staff:</b>			<b>7. Operation Section:</b>		
IC/UC's	B. SEE		Operations	S. NORMAN	
Deputy	B. FARIAS / K. BOHALL (T) / G. BELYEA (T)		Deputy Operations	M. BRUNTON	
Safety Officer	D. SARGENTI / D. BROCKMAN (T)		Night Ops	J. OHS	
Information Officer	D. OLSON / B. MERCADO (T)		Staging Area		
Liaison Officer	M. SMITH / J. DAPPER (T) / J. JARED (CHP)		Branch	I	S. JERRY
<b>4. Agency/Organization Representatives:</b>			Division/Group	A	R. GAYLOR / R. MITCHINSON (T)
Agency/Organization	Name		Division/Group	C	J. KEOWN
CALFIRE LMU Line Officer	L. CALDWELL		Division/Group	D / E	R. PETERSON
USFS Agency Rep	P. MARTINS		Division/Group		
USFS Agency Admin	B. DRAKE		Division/Group		
Cal OES	K. BAILEY		Branch	V	R. DANIELSEN
BLM Admin	E. RYAN		Division/Group	F / G	M. MILOJEVICH
CHP	LT. A. POYNER		Division/Group	J / L	B. WILSON
OES Mngr.	S. ROJAS		Division/Group		
LCSO Agency Rep	M. CARNEY		Division/Group		
CDCR	T. MAINE		Division/Group		
CCC	C. HARRIS		Branch	IX	J. PIERCE / J. GAHAGAN (T)
			Division/Group	O	N. GARCIA
			Division/Group	Q	J. REYES / J. BAKER (T)
			Division/Group	R	G. ENGEN / B. WRIGHT (T)
			Division/Group		
			Branch	WEST CONTINGENCY	G. DEGRAFFENREID (12 hr)
			Division/Group	WEST CONTINGENCY	
<b>5. Planning Section:</b>			Branch	NORTH CONTINGENCY	M. JOHNSON (12 hr)
Chief	B. BLOXHAM		Division/Group	NORTH CONTINGENCY	
Deputy	S. DEBENEDET / G. GARCIA		Division/Group		
Resource Unit	L. PLATA / T. BYRD / M. SELZER (T) / J. HEALD (T)		Division/Group		
Situation Unit	T. TUGGLE / M. THAU (T)		Branch	Staging	
Documentation Unit			Division/Group		
Demobilization Unit	E. CAMPBELL		Division/Group	Susanville Support	T. Williams
GISS	S. STANISH		Division/Group	Water Supply Group	W. DARNALL
FBAN	B. NEWMAN		Division/Group		
IMET	T. FUENTES		Division/Group		
Training Tech Spec	J. VOYSON	<b>Air Operations Branch</b>		Director:	M. STANFORD / S. HAWKINS (T)
Crew Tech Spec	M. O'NEIL	Air Support Group Supervisor		C. WILSON	
<b>6. Logistics Section</b>			Air Tactical Group Supervisor		
Chief	R. TOVAR		Helibase Manager		
Deputy	R. CLUFF				
Supply Unit	J. BECKMAN / J. PECKHAM (T)		<b>8. Finance/Administration Section:</b>		
Facilities Unit	R. HOSTETLER		Chief	R. RAINES	
Ground Support Unit	A. WHITLOCK		Deputy	T. EASTWOOD / P. AGUADA (T)	
Communications Unit	K. JOHNSON		Time Unit	J. OROZCO JR. / Fed Finance T. FORK	
Medical Unit	K. FORTNEY		Procurement Unit	K. SHAEFER	
Ordering Manager	J. SCHEID		Comp/Claims Unit	A. HESTERLY	
Hired Equip. Tech Spec	A. WHITLOCK		Cost Unit	D. SOLIS (T)	
Prepared By: Name:	G. GARCIA	Position/Title:	PSC	Signature:	
ICS 203		Date/Time:	7/23/2020 2000		



# Hog Fire Forecast

FORECAST NO: 4

NAME OF FIRE: Hog  
UNIT: CALFIRE Team 3  
PREDICTION FOR: Friday Shift  
SHIFT DATE: July 24, 2020  
FORECAST ISSUED: 1900 PDT July 23, 2020

Incident Meteorologist (IMET): Tony Fuentes  
Email: [Tony.Fuentes@noaa.gov](mailto:Tony.Fuentes@noaa.gov)  
Cell: (240) 778-5300

A steady warming and drying trend along with daily afternoon west-southwest breezes will prevail through the weekend. Afternoon cumulus build-ups will again develop today with the best development north of the fire. A few isolated showers and thunderstorms are possible by Sunday and Monday.

### TODAY (FRIDAY):

WEATHER: Partly cloudy with a few afternoon cumulus cloud build ups.  
WINDS (EYE LEVEL): Southwest around 8 - 14 mph after 1300.  
MAX TEMPERATURES: 81 - 87°. 91° at ICP Camp.  
MINIMUM HUMIDITY: 17-23%  
TRANSPORT WIND: SW 10 - 20 mph  
LAL 1 HAINES: 4

### TONIGHT (FRIDAY NIGHT):

WEATHER: Mostly clear.  
MIN TEMPERATURES: 48 - 53°F  
MAX HUMIDITY: 55 - 60%  
WINDS (EYE LEVEL): Downslope 2 - 6 mph.  
LAL: 1. HAINES: 3

### SATURDAY:

WEATHER: Mostly Sunny.  
WINDS (EYE LEVEL): Upslope 3 - 7 mph becoming west 8 - 12 mph by late afternoon.  
MAX TEMPERATURES: 82 - 88°. 93° at ICP Camp.  
MINIMUM HUMIDITY: 14 - 19%  
TRANSPORT WIND: SW 10 - 15 mph.  
LAL 1 HAINES: 4

### **Extended Forecast Table:**

	Sun Jul 26	Mon Jul 27	Tue Jul 28	Wed Jul 29
<b>Wx</b>	10-15% chance Showers/T-storms	10-15% chance Showers/T-storms	Partly Cloudy	Mostly Sunny
<b>Wind:</b>	SSW 8-12 mph	SSW 8-12 mph	SW 9-14 mph Gusts 20 mph	SW 12-16 mph Gusts 25 mph
<b>Max Temp / Min RH</b>	84-89° 13-18%	83-88° 17-22%	83-88° 13-19%	82-87° 11-16%
<b>Min Temp / Max RH</b>	51-56° 40-45%	52-57° 45-50%	52-57° 45-50%	51-56° 42-47%
<b>CWR</b>	<5%	<5%	0%	0%
<b>Haines</b>	5	5	5	5

# FIRE BEHAVIOR FORECAST

FORECAST NUMBER: 4

TYPE OF FIRE: Wildfire

FIRE NAME: Hog

OPERATIONAL PERIOD: 7/24/20 – 7/25/20

DATE ISSUED: 7/24/2020

TIME ISSUED: 0600

UNIT: CA-LMU-3874

SIGNED: *Brian Newman*

Typed/printed: Brian Newman FBAN

## INPUTS

### WEATHER SUMMARY

High pressure continues to build into the area, bringing warmer and drier conditions. Daytime temperatures will be around 82-87° decreasing to 48-53° overnight. Minimum relative humidity will be down to 17-23% in the afternoon, increasing to 55-60% overnight. Winds will be light early becoming west at 8-14 MPH in the afternoon turning to slope driven 2-6 mph at night. There will be a line of clouds to the north, moving roughly west to east. These will have no threat of adverse weather to the fire area. There will be a weak inversion that will clear around 1100, potentially increasing fire activity earlier in the day.

## OUTPUTS

### FIRE BEHAVIOR

**GENERAL:** The fire is burning in heavy timber and slash intermixed with bitterbrush and Manzanita, along with clear cut plots littered with moderate to heavy slash. Fuel moistures in the bitterbrush are nearing record levels, fuel moistures in Manzanita are much higher and timber fuel moistures very low due to drought conditions in the area. The fire will continue to burn actively when aligned with the wind and slope.

Timber and slash: Rate of spread 5-7 ft/min // Flame length 2-4 feet // Spotting 500 feet // PIG 80%

Bitterbrush: Rate of spread 11-13 ft/min // Flame lengths 7-9 feet // Spotting ¼ mile feet // PIG 70%

Manzanita: Rate of spread 5-6 ft/min // Flame lengths 2-4 ft // Spotting 100-200 feet // PIG 60%

### SPECIFIC:

Branch I: The fire in this Branch is primarily burning in the bitterbrush and timber slash. Moisture from rainfall has dried and has little effect on the fuels now. Topographic features in the Susan river drainage and along Hwy 36 can channel winds in various directions. Unburned islands can become active as the temperatures and winds increase.

Branch V: Fire behavior is low to moderate but still has potential for activity within the interior islands with the increase in wind speed and rise in temperatures.

Branch IX: This Branch has the most exposure to Southwest winds and may see more smoldering spots become active. The Manzanita in the plantation areas is slowing fire spread due to higher fuel moistures. The timber understory and clear-cut plots contain heavy dead and down and have a higher probability to contain smoldering spots fires, and unburned interior islands may flare up.

**AIR OPERATIONS:** A weak inversion around 6500 feet may inhibit air operations until midmorning, but skies will clear for the rest of the day. Upper level winds will be south to southwest.

### SAFETY

- Be heads up for fire weakened timber, we've already had many fall within the fire area
- Don't let down your guard down. Tragedies have occurred during mop up
- Ash pits may still contain high heat, watch your footing near burned out stump holes



# CAL FIRE INCIDENT MANAGEMENT TEAM 3



1. INCIDENT NAME: <b>Hog</b>		2. DATE PREPARED: July 23, 2020	3. TIME PREPARED: 1500
4. PREPARED BY: David Brockman SOF1(t)	5. LEADER NAME: David Sargenti SOF1	6. OPERATIONAL PERIOD: 7/24/2020 0700 TO 7/25/2020 0700	

# SAFETY MESSAGE

***SAFETY DOES NOT STOP AT THE BRIEFING!  
KEEP IT IN YOUR MIND AND REFLECT IT IN YOUR ACTIONS!  
BE A ROLE MODEL FOR OTHERS!***

- Take all COVID 19 precautions.
- Trees are weakened due to fire activity. Look Up, Down, and Around.
- Make sure everyone gets a briefing!
- Monitor your hydration/nutrition intake and keep adequate supplies of each.
- Watch for utility poles that have been weakened by fire, they may fall suddenly.
- Drive defensively, watch your speed and use warning lights when needed.
- Watch for civilian traffic in the fire area.

"Follow me,  
this way's  
always safe!"



## COMPLACENCY

**LOOK OUTS  
COMMUNICATIONS  
ESCAPE ROUTES  
SAFETY ZONES**

CAL FIRE INCIDENT MANAGEMENT TEAM 3 SOF1 David Sargenti



# INCIDENT RISK ANALYSIS ICS 215A



BRANCH	HAZARDOUS ACTIONS/ CONDITIONS	MITIGATIONS/WARNINGS/REMEDIES
ALL	COVID 19	<ul style="list-style-type: none"> <li>Wear mask when in camp and around the public.</li> <li>Wash/sanitize hands often.</li> <li>Maintain social distancing when applicable.</li> <li>Complete daily COVID screening process.</li> </ul>
ALL	INCIDENT WITHIN AN INCIDENT (IWI)	<ul style="list-style-type: none"> <li>Review medical plan for proper notification procedures.</li> </ul>
ALL	DRIVING HAZARDS	<ul style="list-style-type: none"> <li>Watch your speeds.</li> <li>Watch for civilian traffic on the roadways.</li> <li>Drive defensively! Expect the unexpected.</li> <li>Watch for road degradation and dusty conditions.</li> <li>Be aware of debris in the roadways from rollout, suppression operations and fire damage to poles.</li> </ul>
ALL	WEATHER	<ul style="list-style-type: none"> <li>Be aware of changing wind conditions.</li> <li>Watch for changing weather conditions.</li> </ul>
ALL	PERSONNEL SAFETY	<ul style="list-style-type: none"> <li>All personnel are responsible for their personal safety.</li> <li>Immediately report any suspicious activity.</li> <li>Be sure to wear all required PPE while on the fire line.</li> </ul>
ALL	POWER LINES	<ul style="list-style-type: none"> <li>Be cautious if you encounter any down lines.</li> <li>Make appropriate notifications if found.</li> </ul>
ALL	HYDRATION	<ul style="list-style-type: none"> <li>Drink water before, during and after each shift.</li> <li>Be alert for signs of heat stress in yourself and others.</li> </ul>
ALL	FIRE AND DROUGHT WEAKENED TREES/SNAG HAZARDS	<ul style="list-style-type: none"> <li>Follow Hazard Tree Safety Guidelines (IRPG p. 22).</li> <li>Many of the trees within the fire area and along roadways are stressed due to drought conditions and burn times.</li> </ul>
ALL	MOP UP	<ul style="list-style-type: none"> <li>Wear all appropriate PPE.</li> <li>Watch for stump holes.</li> <li>Do not get complacent.</li> </ul>
ALL	COMMUNICATIONS	<ul style="list-style-type: none"> <li>Check the communication plan for frequency assignments.</li> <li>Be clear and concise when talking on the radio.</li> <li>Use human repeaters as needed.</li> </ul>
ALL	BRIEFINGS	<ul style="list-style-type: none"> <li>Make sure everyone gets a briefing on the plan for the day.</li> <li>Document this on your ICS 214.</li> </ul>
ALL	LCES	<ul style="list-style-type: none"> <li>Ensure that LCES is being utilized.</li> </ul>
ALL	HELICOPTER AWARENESS	<ul style="list-style-type: none"> <li>Watch for rotor wash when working near helicopters.</li> <li>Understand that hazardous trees may react to helicopters overhead.</li> <li>Monitor assigned aircraft frequencies.</li> </ul>
ALL	HEAVY EQUIPMENT	<ul style="list-style-type: none"> <li>Watch out for heavy equipment traffic!</li> <li>Be aware of heavy equipment working in the area.</li> <li>Be watchful around heavy equipment, they may not see you.</li> </ul>
Incident Name:  <b>Hog</b>		Date Prepared: 7/23/2020 Prepared by: David Brockman SOF1 (T)
		Operational Period: 7/24/2020-7/25/2020  0700-0700

*In readiness is all*











# ASSIGNMENT LIST (ICS 204 WF)

CONTROLLED UNCLASSIFIED  
INFORMATION/BASIC

<b>1. Incident Name:</b> <p style="text-align: center; font-size: 1.2em;">Hog</p>	<b>2. Operational Period:</b> Date From: 07/24/20    Date To: 07/25/20 Time From: 0700    Time To: 0700	<b>3. Branch</b> <b>Division</b> <p style="text-align: center; font-size: 1.5em;">I            D / E</p>
<b>4. Operations Personnel:</b> Operations Section Chief: <b>S. NORMAN</b> Branch Director: <b>S. JERRY</b> Division/Group Supervisor: <b>R. PETERSON</b>		Page 1 of 1

Night Ops: <b>J. OHS</b>	Branch Safety: <b>S. LINK / N. LA RUSSO (T)</b>
Air Attack: <b>S. MCGREGOR</b>	

5. Resources Assigned:		** Resources Below in Bold are 12 Hour **					
Resource Identifier	ALS	LWD	Leader	Personnel	Request #	Hours	Reporting Location
STC XSJ 4178C			S. ARGANBRIGHT	18	E-82	0700-0700	DP 1
STC XTB 4225C			C. SALERNO	20	E-85	0700-0700	DP 1
<del>ENG LOO 4822</del> <span style="color: red; font-style: italic;">No Show</span>				3	E-155	0700-0700	DP 1
STG BTU 9212G			K. FINKENKELLER	30	C-25	0700-0700	DP 1
CRW T2 C-63			J. DELFIN	20	<b>C-63</b>	<b>0700-1900</b>	DP 1
CRW T2 C-64			F. PEREZ	20	<b>C-64</b>	<b>0700-1900</b>	DP 1
CRW T2 DIAMOND MTN						<b>0700-1900</b>	DP 1
DOZ LMU 2241			B. MALLERY	2	E-5	0700-0700	DP 1
WT PVT E-42				2	E-42	0700-0700	DP 1
WT PVT E-114			J. SHELTON	2	E-114	0700-0700	DP 1
WT PVT E-253			B. WOOTEN	2	E-253	0700-0700	DP 1
FALM O-381				2	<b>O-381</b>	<b>0700-1900</b>	DP 1

**6. Work Assignments:**  
 Improve line  
 Mop up and patrol 200'

**7. Special Instructions:**

**8. Communications**

Name	Ch	Function	Rx Freq	Rx Tone	Tx Freq	Tx Tone	Notes
C11 T15	1	COMMAND	151.1675	103.5 (T8)	159.3975	162.2 (T15)	Roop Mtn covers NE side of Branch V
C11 T14	2	COMMAND	151.1675	103.5 (T8)	159.3975	151.4 (T14)	Shaffer Mtn covers SW side of Branch V
CO FIRE	3	COMMAND	154.4450	0.0	154.0100	110.9 (T1)	Tone 1, Shaffer Mtn; Available for Susanville Support / Water Supply Group
CDF T31	6	TACTICAL	159.3825	192.8 (T16)	159.3825	192.8 (T16)	
CDF T23	14	AIR TO GROUND	159.4500	192.8 (T16)	159.4500	192.8 (T16)	
CALCORD	15	MEDICAL	156.0750	156.7 (T6)	156.0750	156.7 (T6)	
GUARD	16	EMERGENCY	168.6250	0.0	168.6250	110.9 (T1)	EMERGENCY USE ONLY

**9. Prepared by: Name:**                      T. BYRD    RESL

Signature:

ICS 204    Date/Time: 7/23/2020    2200    Personnel Count: 121

CONTROLLED UNCLASSIFIED INFORMATION/BASIC

# ASSIGNMENT LIST (ICS 204 WF)

CONTROLLED UNCLASSIFIED  
INFORMATION//BASIC

<b>1. Incident Name:</b> <p style="text-align: center; font-size: 1.2em;">Hog</p>	<b>2. Operational Period:</b> Date From: 07/24/20    Date To: 07/25/20 Time From: 0700        Time To: 0700	<b>3. Branch</b> <b>Division</b> <p style="text-align: center; font-size: 1.5em;">V                                  F / G</p>
--	---	---

Page 1 of 1

<b>4. Operations Personnel:</b>	
Operations Section Chief: <b>S. NORMAN</b>	Night Ops: <b>J. OHS</b>
Branch Director: <b>R. DANIELSEN</b>	Branch Safety:
Division/Group Supervisor: <b>M. MILOJEVICH</b>	Air Attack: <b>S. MCGREGOR</b>

5. Resources Assigned:		** Resources Below in Bold are 12 Hour **					
Resource Identifier	ALS	LWD	Leader	Personnel	Request #	Hours	Reporting Location
STA OES 2800A			<b>J. THOMAS</b>	<b>21</b>	<b>E-346</b>	<b>0700-0700</b>	<b>DP 50</b>
STC XNA 2200C			<b>T. BECERRA</b>	<b>20</b>	<b>E-79</b>	<b>0700-0700</b>	<b>DP 50</b>
ENG XLS 226			<b>C. KENNEMORE</b>	<b>3</b>	<b>E-154</b>	<b>0700-0700</b>	<b>DP 50</b>
ENG CPV 149			<b>N. OROZCO</b>	<b>3</b>	<b>E-149</b>	<b>0700-0700</b>	<b>DP 50</b>
CRW T2 C-60			<b>C. BURNS</b>	<b>20</b>	<b>C-60</b>	<b>0700-1900</b>	<b>DP 50</b>
CRW T2 C-86			<b>S. GARCIA</b>	<b>20</b>	<b>C-86</b>	<b>0700-1900</b>	<b>DP 50</b>
CRW T2 C-87			<b>A. RAMIREZ</b>	<b>20</b>	<b>C-87</b>	<b>0700-1900</b>	<b>DP 50</b>
CRW T2 C-89			<b>R. HOFFMAN</b>	<b>20</b>	<b>C-89</b>	<b>0700-1900</b>	<b>DP 50</b>
CRW T2 C-93			<b>L. AYALA</b>	<b>20</b>	<b>C-93</b>	<b>0700-1900</b>	<b>DP 50</b>
WT PVT E-255			<b>T. PINI</b>	<b>2</b>	<b>E-255</b>	<b>0700-0700</b>	<b>DP 50</b>
WT PVT E-257			<b>F. LUTS</b>	<b>2</b>	<b>E-257</b>	<b>0700-0700</b>	<b>DP 50</b>
WT PVT E-334			<b>D. MCGARR</b>	<b>2</b>	<b>E-334</b>	<b>0700-0700</b>	<b>DP 50</b>
FEMP ABBOTT			<b>J. ABBOTT</b>	<b>1</b>	<b>O-233</b>	<b>0700-0700</b>	<b>DP 50</b>
FEMT REX			<b>R. REX</b>	<b>1</b>	<b>O-156</b>	<b>0700-0700</b>	<b>DP 50</b>
STA OES 5801 A			<b>T. England</b>	<b>21</b>	<b>E-402</b>		

**6. Work Assignments:**  
Mop up and patrol 300'

**7. Special Instructions:**

8. Communications							
Name	Ch	Function	Rx Freq	Rx Tone	Tx Freq	Tx Tone	Notes
C11 T15	1	COMMAND	151.1675	103.5 (T8)	159.3975	162.2 (T15)	Roop Mtn covers NE side of Branch V
C11 T14	2	COMMAND	151.1675	103.5 (T8)	159.3975	151.4 (T14)	Shaffer Mtn covers SW side of Branch V
CO FIRE	3	COMMAND	154.4450	0.0	154.0100	110.9 (T1)	Tone 1, Shaffer Mtn; Available for Susenville Support / Water Supply Group
CDF T30	5	TACTICAL	151.3925	192.8 (T16)	151.3925	192.8 (T16)	
CDF T23	14	AIR TO GROUND	159.4500	192.8 (T16)	159.4500	192.8 (T16)	
CALCORD	15	MEDICAL	156.0750	156.7 (T6)	156.0750	156.7 (T6)	
GUARD	16	EMERGENCY	168.6250	0.0	168.6250	110.9 (T1)	EMERGENCY USE ONLY

<b>9. Prepared by: Name:</b> T. BYRD	RESL	Signature:	Personnel Count: 155
ICS 204	Date/Time: 7/23/2020 2200		

NIMS IAP
CONTROLLED UNCLASSIFIED INFORMATION//BASIC



# ASSIGNMENT LIST (ICS 204 WF)

CONTROLLED UNCLASSIFIED  
INFORMATION/BASIC

<b>1. Incident Name:</b> <p style="text-align: center; font-size: 1.2em;">Hog</p>	<b>2. Operational Period:</b> Date From: 07/24/20    Date To: 07/25/20 Time From: 0700    Time To: 0700	<b>3. Branch</b> <b>Division</b> <p style="text-align: center; font-size: 1.5em;">IX            O</p> Page 1 of 2    Oscar
--	---	--

<b>4. Operations Personnel:</b>	
Operations Section Chief: <b>S. NORMAN</b>	Night Ops: <b>J. OHS</b>
Branch Director: <b>J. PIERCE / J. GAHAGAN (T)</b>	Branch Safety: <b>J. WILLIAMS / L. PALMER (T)</b>
Division/Group Supervisor: <b>N. GARCIA</b>	Air Attack: <b>S. MCGREGOR</b>

5. Resources Assigned:	** Resources Below in Bold are 12 Hour **						
Resource Identifier	ALS	LWD	Leader	Personnel	Request #	Hours	Reporting Location
STC SHU 9243C			D. GYVES	18	E-27	0700-0700	DP 50
STC SKU 9260C			K. CUNNINGHAM	18 +/-	E-15	0700-0700	DP 50
STC XNE 4101C			J. SMITH	19	E-83	0700-0700	DP 50
STC XCC 2025C			J. VIERA	22	E-269	0700-0700	DP 50
STF MVU 9336F			K. ZINGHEIM	11	E-357	0700-0700	DP 50
CRW TRINITY IHC			R. REOSA III	16	C-12	0700-1900	DP 50
CRW SMITH RIVER IHC			D. DENLINGER	20	C-13	0700-1900	DP 50
CRW PVT C-67			M. OJEDA	20	C-67	0700-1900	DP 50
CRW T2 C-80			A. CORONADO	20	C-80	0700-1900	DP 50
DOZ BTU 2140			Z. GUYZMAN	3	E-50	0700-0700	DP 50
DOZ PVT E-96			H. MCGOWAN	1	E-96	0700-0700	DP 50
DOZ PVT E-102			M. MURDOCK	1	E-102	0700-0700	DP 50
DOZ PVT E-279			S. MOORE	2	E-279	0700-0700	DP 50
WT PVT E-44			P. MARYMEE	2	E-44	0700-0700	DP 50
WT PVT E-108 → Water Sup.			M. SISSON	2	E-108	0700-0700	DP 50
WT PVT E-109			D. OAILAR	2	E-109	0700-0700	DP 50
HEQB HAM			B. HAM	1	O-367	0700-0700	DP 50
FALM O-384			R. MADDEN	2	O-384	0700-1900	DP 50

**6. Work Assignments:**  
 Improve line  
 Mop up and patrol 300'  
 Mop up spots 100%

**7. Special Instructions:**

8. Communications							
Name	Ch	Function	Rx Freq	Rx Tone	Tx Freq	Tx Tone	Notes
C11 T15	1	COMMAND	151.1675	103.5 (T8)	159.3975	162.2 (T15)	Roop Mtn covers NE side of Branch V
C11 T14	2	COMMAND	151.1675	103.5 (T8)	159.3975	151.4 (T14)	Shaffer Mtn covers SW side of Branch V
CO FIRE	3	COMMAND	154.4450	0.0	154.0100	110.9 (T1)	Tone 1, Shaffer Mtn; Available for Susanville Support / Water Supply Group
VFIRE 25	11	TACTICAL	154.2875	156.7 (T6)	154.2875	156.7 (T6)	May also be used by Susanville
CDF T23	14	AIR TO GROUND	159.4500	192.8 (T16)	159.4500	192.8 (T16)	
CALCORD	15	MEDICAL	156.0750	156.7 (T6)	156.0750	156.7 (T6)	
GUARD	16	EMERGENCY	168.6250	0.0	168.6250	110.9 (T1)	EMERGENCY USE ONLY

<b>9. Prepared by: Name:</b> T. BYRD	RESL	Signature:	Personnel Count: 180
--------------------------------------	------	------------	----------------------

ICS 204  
NIMS IAP

Date/Time: 7/23/2020 2200

CONTROLLED UNCLASSIFIED INFORMATION/BASIC





# ASSIGNMENT LIST (ICS 204 WF)

CONTROLLED UNCLASSIFIED  
INFORMATION/BASIC

<b>1. Incident Name:</b> <p style="text-align: center; font-size: 1.2em;">Hog</p>		<b>2. Operational Period:</b> Date From: 07/24/20      Date To: 07/25/20 Time From: 0700              Time To: 0700				<b>3. Branch</b> <p style="text-align: center; font-size: 1.5em;">IX</p>		<b>Division</b> <p style="text-align: center; font-size: 1.5em;">Q</p>	
<b>4. Operations Personnel:</b> Operations Section Chief: <b>S. NORMAN</b> Branch Director: <b>J. PIERCE / J. GAHAGAN (T)</b> Division/Group Supervisor: <b>J. REYES / J. BAKER (T)</b>		Night Ops: <b>J. OHS</b> Branch Safety: <b>J. WILLIAMS / L. PALMER (T)</b> Air Attack: <b>S. MCGREGOR</b>		Page 1 of 2		Quebec			
<b>5. Resources Assigned:</b>		<b>** Resources Below in Bold are 12 Hour **</b>							
Resource Identifier	ALS	LWD	Leader	Personnel	Request #	Hours	Reporting Location		
STC LMU 9221C						0700-0700	DP 90		
STC MRN 9150C			T. NUNES	19	E-77	0700-0700	DP 90		
STC XBU 3000C			M. WATNER	18	E-384	0700-0700	DP 90		
STC XED 4077C			A. MORENO	21	E-86	0700-0700	DP 90		
STC XPL 4127C			M. LAUCHER	19	E-84	0700-0700	DP 90		
STC XTB 4000C			K. JAKUBOS	19	E-390	0700-0700	DP 90		
STG AEU 9275G			M. BOYCE		C-26	0700-0700	DP 90		
CRW LMU CREW 1			C. SIMMS	11	C-1	0700-0700	DP 90		
CRW LMU DEVIL 1			N. STETSER	14	C-99	0700-0700	DP 90		
CRW MENDOCINO IHC			E. CECCON	20	C-14	0700-1900	DP 90		
CRW T2 C-32			J. LOPEZ	20	C-32	0700-1900	DP 90		
CRW T2 C-59			T. BIRRUTIA	20	C-59	0700-1900	DP 90		
CRW PVT C-68			K. OROZSCO	20	C-68	0700-1900	DP 90		
CRW T2 C-88			T. PORTER	20	C-88	0700-1900	DP 90		
CRW T2 C-90			E. LORD	1	C-90	0700-1900	DP 90		
CRW T2 C-91			J. IBARRA	20	C-91	0700-1900	DP 90		
DOZ PVT E-95			P. TARBUSH	1	E-95	0700-0700	DP 90		
DOZ PVT E-97			Z. STEVENSON	1	E-97	0700-0700	DP 90		
<b>6. Work Assignments:</b> Improve line Mop up and patrol 300' Mop up spots 100%									
<b>7. Special Instructions:</b>									
<b>8. Communications</b>									
Name	Ch	Function	Rx Freq	Rx Tone	Tx Freq	Tx Tone	Notes		
C11 T15	1	COMMAND	151.1675	103.5 (T8)	159.3975	162.2 (T15)	Roop Mtn covers NE side of Branch V		
C11 T14	2	COMMAND	151.1675	103.5 (T8)	159.3975	151.4 (T14)	Shaffer Mtn covers SW side of Branch V		
CO FIRE	3	COMMAND	154.4450	0.0	154.0100	110.9 (T1)	Tone 1, Shaffer Mtn; Available for Susarville Support / Water Supply Group		
VFIRE 26	12	TACTICAL	154.3025	156.7 (T6)	154.3025	156.7 (T6)			
CDF T23	14	AIR TO GROUND	159.4500	192.8 (T16)	159.4500	192.8 (T16)			
CALCORD	15	MEDICAL	156.0750	156.7 (T6)	156.0750	156.7 (T6)			
GUARD	16	EMERGENCY	168.6250	0.0	168.6250	110.9 (T1)	EMERGENCY USE ONLY		
<b>9. Prepared by: Name:</b>		T. BYRD			RESL		Signature:		
ICS 204		Date/Time: 7/23/2020			2200		Personnel Count: 244		

NIMS IAP

CONTROLLED UNCLASSIFIED INFORMATION/BASIC



# ASSIGNMENT LIST (ICS 204 WF)

CONTROLLED UNCLASSIFIED  
INFORMATION/BASIC

<b>1. Incident Name:</b> <p style="text-align: center; font-size: 1.2em;">Hog</p>		<b>2. Operational Period:</b> Date From: 07/24/20    Date To: 07/25/20 Time From: 0700    Time To: 0700				<b>3. Branch</b> <p style="text-align: center; font-size: 1.5em;">IX</p>		<b>Division</b> <p style="text-align: center; font-size: 1.5em;">R</p>	
<b>4. Operations Personnel:</b>						Page 1 of 1		Romeo	
Operations Section Chief: <b>S. NORMAN</b>				Night Ops: <b>J. OHS</b>					
Branch Director: <b>J. PIERCE / J. GAHAGAN (T)</b>				Branch Safety: <b>J. WILLIAMS / L. PALMER (T)</b>					
Division/Group Supervisor: <b>G. ENGEN / B. WRIGHT (T)</b>				Air Attack: <b>S. MCGREGOR</b>					
<b>5. Resources Assigned:</b>		<b>** Resources Below in Bold are 12 Hour **</b>							
Resource Identifier	ALS	LWD	Leader	Personnel	Request #	Hours	Reporting Location		
STC CZU 9170C			<b>C. JACOBSEN</b>	16	E-64	0700-0700	DP 90		
STC BTU 9211C			<b>J. MORRIS</b>	19	E-6	0700-0700	DP 90		
CRW T2 C-38			<b>J. FOWARD</b>	20	C-38	0700-1900	DP 90		
CRW T2 C-75			<b>H. ROCHA</b>	20	C-75	0700-1900	DP 90		
CRW T2 C-78			<b>L. RASCH</b>	20	C-78	0700-1900	DP 90		
CRW T2 C-81			<b>J. PARRAS</b>	20	C-81	0700-1900	DP 90		
CRW T2 C-82			<b>R. HERNANDEZ</b>	20	C-82	0700-1900	DP 90		
CRW T2 C-96			<b>O. MIRANDA</b>	20	C-96	0700-1900	DP 90		
DOZ LMU 2244			<b>J. WALTON</b>	1	E-207	0700-0700	DP 90		
DOZ AEU 2744			<b>M. FISCHER</b>	4	E-87	0700-0700	DP 90		
DOZ PVT E-98			<b>T. STEVENSON</b>	1	E-98	0700-0700	DP 90		
WT PVT E-43			<b>A. RICH</b>	2	E-43	0700-0700	DP 90		
WT PVT E-58					E-58	0700-0700	DP 90		
WT PVT E-167				2	E-167	0700-0700	DP 90		
FEMP ENDERLIN			<b>J. ENDERLIN</b>	1	O-232	0700-0700	DP 90		
FEMT RAMSEY			<b>M. RAMSEY</b>	1	O-225	0700-0700	DP 90		
<b>5TB XTE 3250 B</b>			<b>S. Blare</b>		<b>E-396</b>				
<b>6. Work Assignments:</b> Improve line Mop up and patrol 300' Mop up spots 100%									
<b>7. Special Instructions:</b>									
<b>8. Communications</b>									
Name	Ch	Function	Rx Freq	Rx Tone	Tx Freq	Tx Tone	Notes		
C11 T15	1	COMMAND	151.1675	103.5 (T8)	159.3975	162.2 (T15)	Roop Mtn covers NE side of Branch V		
C11 T14	2	COMMAND	151.1675	103.5 (T8)	159.3975	151.4 (T14)	Shaffer Mtn covers SW side of Branch V		
CO FIRE	3	COMMAND	154.4450	0.0	154.0100	110.9 (T1)	Tone 1, Shaffer Mtn; Available for Susenville Support / Water Supply Group		
VFIRE 26	12	TACTICAL	154.3025	156.7 (T6)	154.3025	156.7 (T6)			
CDF T23	14	AIR TO GROUND	159.4500	192.8 (T16)	159.4500	192.8 (T16)			
CALCORD	15	MEDICAL	156.0750	156.7 (T6)	156.0750	156.7 (T6)			
GUARD	16	EMERGENCY	168.6250	0.0	168.6250	110.9 (T1)	EMERGENCY USE ONLY		
<b>9. Prepared by: Name:</b>		T. BYRD			RESL		Signature:		
ICS 204		Date/Time: 7/23/2020		2200		Personnel Count: 167			

NIMS IAP

CONTROLLED UNCLASSIFIED INFORMATION/BASIC

# ASSIGNMENT LIST (ICS 204 WF)

CONTROLLED UNCLASSIFIED  
INFORMATION/BASIC

<b>1. Incident Name:</b> <p style="text-align: center; font-size: 1.2em;">Hog</p>	<b>2. Operational Period:</b> Date From: 07/24/20    Date To: 07/25/20 Time From: 0700    Time To: 0700	<b>3. Branch</b> <b>Division</b> <p style="text-align: center; font-weight: bold;">WEST CONTINGENCY    WEST CONTINGENCY</p>
--	---	--

<b>4. Operations Personnel:</b> Operations Section Chief: <b>S. NORMAN</b> Branch Director: <b>G. DEGRAFFENREID (12 hr)</b> Division/Group Supervisor:		Night Ops: <b>J. OHS</b> Branch Safety: Air Attack: <b>S. MCGREGOR</b>
---	--	--

5. Resources Assigned:		** Resources Below in Bold are 12 Hour **					
Resource Identifier	ALS	LWD	Leader	Personnel	Request #	Hours	Reporting Location
CRW LNF HEART LAKE			<b>V. MARTINO</b>	20	C-2	0700-1900	DP 2
CRW T2 C-61			<b>L. CERVANCEZ</b>	20	C-61	0700-1900	DP 2
CRW T2 C-66			<b>C. OROZCO</b>	20	C-66	0700-1900	DP 2
CRW T2 C-76			<b>J. MENDOZA</b>	20	C-76	0700-1900	DP 2
CRW T2 C-77			<b>J. MARTINEZ</b>	20	C-77	0700-1900	DP 2
MAST PVT E-312			<b>T. FUNES</b>	1	E-312	0700-1900	DP 2
MAST PVT E-313			<b>D. THEIS</b>	1	E-313	0700-1900	DP 2
MAST PVT E-371			<b>B. FORKNER</b>	2	E-371	0700-1900	DP 2
EXC							DP 2
CHIP PVT E-315			<b>M. BLAKMAN</b>	1	E-315	0700-1900	DP 2
CHIP PVT E-316			<b>B. LUHELLIER</b>	1	E-316	0700-1900	DP 2
CHIP							DP 2
CHIP							DP 2
HEQB BRIDGER			<b>J. BRIDGER</b>	1	O-217	0700-1900	DP 2
HEQB HICKEY (T)			<b>T. HICKEY</b>	1	O-56	0700-1900	DP 2

**6. Work Assignments:**  
Prep 30N 05 Road  
Chip from 44 / Gomez Rd to DP51

**7. Special Instructions:**

8. Communications							
Name	Ch	Function	Rx Freq	Rx Tone	Tx Freq	Tx Tone	Notes
C11 T15	1	COMMAND	151.1675	103.5 (T8)	159.3975	162.2 (T15)	Roop Mtn covers NE side of Branch V
C11 T14	2	COMMAND	151.1675	103.5 (T8)	159.3975	151.4 (T14)	Shaffer Mtn covers SW side of Branch V
CO FIRE	3	COMMAND	154.4450	0.0	154.0100	110.9 (T1)	Tone 1, Shaffer Mtn; Available for Susenville Support / Water Supply Group
CDF T29	4	TACTICAL	151.3475	192.8 (T16)	151.3475	192.8 (T16)	
CDF T23	14	AIR TO GROUND	159.4500	192.8 (T16)	159.4500	192.8 (T16)	
CALCORD	15	MEDICAL	156.0750	156.7 (T6)	156.0750	156.7 (T6)	
GUARD	16	EMERGENCY	168.6250	0.0	168.6250	110.9 (T1)	EMERGENCY USE ONLY

<b>9. Prepared by: Name:</b> T. BYRD	RESL	Signature:	Personnel Count: 108
---	------	------------	----------------------

ICS 204  
NIMS IAP

Date/Time: 7/23/2020 2200

CONTROLLED UNCLASSIFIED INFORMATION/BASIC









# AIR OPERATIONS SUMMARY ICS-220

<b>Incident Name / Incident Number</b> CALMU 3874	<b>Sunrise</b> 555	<b>Startup</b> 625	<b>Cutoff</b> 1957	<b>Sunset</b> 2027	<b>Time Prepared</b> 1900 Shutdown 2057	<b>Date Prepared</b> Thursday, July 23, 2020 Operational Period - Date Friday, July 24, 2020	<b>Prepared By</b> Shem Hawkins		
<b>General Remarks, Safety Notes, Hazards, Air Operations Special Equipment, etc.</b> TRACK ALL DIPSITE LOCATIONS / NUMBER OF DIPS / GALLONS TAKEN. TRACK ALL DROP LOCATIONS / NUMBER OF DROPS / GALLONS DROPPED ALL GPS DATA TO BE COLLECTED IN DEGREES, MINUTES, DECIMAL MINUTES FORMAT. AVOID Aerial Application of Retardant / Foam / Agent within 300' of Waterways, Bodies of Water, etc. If Retardant / Foam / Agent is Dropped Within These Areas Immediately Notify the AOB/D and Provide the Following Information: Lat / Long, Estimated Number of Gallons and a Map Detailing The Area. ORDER AIRCRAFT ON LMU LOCAL TONE 7 - CONTACT COMMUNICATIONS ON COMMAND 11 UAS Unmanned 108 will be mapping and providing incident intelligence					<b>Helibase Information</b> Name: Meadow Latitude: 40 18.279 Longitude: 120 57.092  Name: See NM Radius: FAA MSL Altitude: Website Lat Centerpoint: Long  NOTAMS: Frequency: http://tfr.faa.gov/tfr2/list.html			<b>Rescue Ship Information</b> Name: Guard840 Phone: 925.325.4158 Make/Model: Blackhawk Location: Fall River Mills Request Procedure for These Aircraft: Order a hoist ship through the ECC See Medical Plan For Additional Info	
<b>Frequencies</b> AIR TACTICS AIR / AIR Rotary Wing AIR / AIR - Briefing AIR / GROUND - Tactical COMMAND (AIRCRAFT ORDER) COMMAND (COMMUNICATIONS) TOLC DECK CALCORD - MEDICAL AIRGAURD - Emergency Only					<b>Position</b> Name AOB/D ASGS HEBM ATGS HLCO HLCO UASM UASL			<b>Phone</b> Matt Stanford Chris Willson Ryan Johnson Skye McGregor Brian Renner Logan Kalfsbeck Byron Vance Jake Sjolund	
<b>TX</b> 167.0750 118.0750 122.2750 T23 159.450 151.2500 151.1675 123.0250 163.1000 156.0750 168.6250					<b>Tone</b> FM AM AM 192.8 OST 162.2 156.7 (6) 110.9 (1)			<b>AM / FM</b> FM AM AM FM FM FM AM FM FM FM	

HELICOPTERS ( Use page 2 if Needed )													
FAA #	Type	Make/Model	Helibase	Avail	Start	Remarks	FAA #	Type	Make/Model	Helibase	Avail	Start	Remarks
31AJ	I	234	Meadow	800	830	A-53							
51BH	I	UH60	Meadow	800	830	A-54							A-73
13FH	I	UH60	Meadow	800	830	A-70							
70K	I	UH60	Meadow	800	830	A-69							
96W	I	S61	Meadow	800	830	A-68							
36BH	I	UH60	Meadow	800	830	A-33							
17FH	I	UH60	Meadow	800	830	A-32							
82BH	I	UH60	Meadow	800	830	A-111							
1KA	1	Kaman	Kmax	800	830	A-112	4TV	III	ASTAR	Meadow	800	830	HLCO - Yellow -
							242BH	III	L206	Meadow	800	830	HLCO - Blue - A72
							839PA	III	A350	Meadow	800	830	HLCO - Red - A24
							553	III	407	Ravendale	800	830	A-11
							509	III	Cobra	Chester	800	830	IR- A35

FIXED WING ( Use Page 2 if Needed )													
FAA #	Type	Make/Model	Base	Avail	Start	Remarks	FAA #	Type	Make/Model	Base	Avail	Start	Remarks

# ICS 205 - INCIDENT RADIO COMMUNICATIONS PLAN

1. Incident Name: **Hog**  
 Date: 07/23/2020  
 Time: 1940

2. Date/Time Prepared: **07/23/2020**  
 Date From: 07/24/20  
 Time From: 0700

3. Operational Period:  
 Date To: 07/25/20  
 Time To: 0700

4. Communications		Incident Channels		Assigned To		Rx Freq	Rx Tone	Tx Freq	Tx Tone	Notes
Ch#	Function	Name	Assigned To	Rx Freq	Rx Tone	Tx Freq	Rx Tone	Tx Freq	Tx Tone	Notes
1	COMMAND	C11 T15	ALL DIVS	151.1675	103.5 (T8)	159.3975	162.2 (T15)	159.3975	162.2 (T15)	Roop Mtn covers NE side of Branch V
2	COMMAND	C11 T14	ALL DIVS	151.1675	103.5 (T8)	159.3975	151.4 (T14)	159.3975	151.4 (T14)	Shaffer Mtn covers SW side of Branch V
3	COMMAND	CO FIRE	UNASSIGNED	154.4450	0.0	154.0100	110.9 (T1)	154.0100	110.9 (T1)	Tone 1, Shaffer Mtn; Available for Susanville Support / Water Supply Group
4	TACTICAL	CDF T29	DIV A and N & W CONT.	151.3475	192.8 (T16)	151.3475	192.8 (T16)	151.3475	192.8 (T16)	
5	TACTICAL	CDF T30	DIV F / G	151.3925	192.8 (T16)	151.3925	192.8 (T16)	151.3925	192.8 (T16)	
6	TACTICAL	CDF T31	DIVS C / D / E	159.3825	192.8 (T16)	159.3825	192.8 (T16)	159.3825	192.8 (T16)	
7	TACTICAL	VFIRE 21	UNASSIGNED	154.2800	156.7 (T6)	154.2800	156.7 (T6)	154.2800	156.7 (T6)	Available for Susanville Support / Water Supply Group
8	TACTICAL	VFIRE 22	UNASSIGNED	154.2650	156.7 (T6)	154.2650	156.7 (T6)	154.2650	156.7 (T6)	Available for Susanville Support / Water Supply Group
9	TACTICAL	VFIRE 23	UNASSIGNED	154.2950	156.7 (T6)	154.2950	156.7 (T6)	154.2950	156.7 (T6)	Available for Susanville Support / Water Supply Group
10	TACTICAL	VFIRE 24	DIV J / L	154.2725	156.7 (T6)	154.2725	156.7 (T6)	154.2725	156.7 (T6)	May also be used by Susanville Support / Water Supply Group
11	TACTICAL	VFIRE 25	DIV O and Staging	154.2875	156.7 (T6)	154.2875	156.7 (T6)	154.2875	156.7 (T6)	May also be used by Susanville Support / Water Supply Group
12	TACTICAL	VFIRE 26	DIV Q / R	154.3025	156.7 (T6)	154.3025	156.7 (T6)	154.3025	156.7 (T6)	
13	TACTICAL	VTAC 14	BRIEFING / STR GRP	159.4725	156.7 (T6)	159.4725	156.7 (T6)	159.4725	156.7 (T6)	
14	AIR TO GROUND	CDF T23	ALL DIVS	159.4500	192.8 (T16)	159.4500	192.8 (T16)	159.4500	192.8 (T16)	
15	MEDICAL	CALCORD	ALL DIVS	156.0750	156.7 (T6)	156.0750	156.7 (T6)	156.0750	156.7 (T6)	
16	EMERGENCY	GUARD	ALL DIVS	168.6250	0.0	168.6250	110.9 (T1)	168.6250	110.9 (T1)	EMERGENCY USE ONLY
17										
18										
19										
20	EMERGENCY	GUARD	ALL DIVS	168.6250	0.0	168.6250	110.9 (T1)	168.6250	110.9 (T1)	EMERGENCY USE ONLY

5. Special Instructions

6. Prepared by (Communications Unit Leader): Name: **Kyle Johnson**  
 Signature: *Kyle R. Johnson*  
 Date/Time: 7/23/2020 / 2000





CAL FIRE INCIDENT  
MANAGEMENT TEAM 3



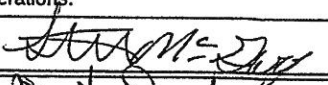

---

**RADIO BRIEFING  
WILL BE BROADCAST ON  
VTAC 14**

---

*In readiness is all*

## MEDICAL PLAN (ICS 206)

<b>1. Incident Name:</b> <p style="text-align: center;">Hog</p>		<b>2. Operational Period:</b> Date From: 7/24/20 Date To: 7/25/20 Time From: 0700 Time To: 0700					
<b>3. Medical Aid Stations:</b>							
Name	Location	Contact Number/Freq	Paramedics				
CAL MAT	ICP	916-247-1940/ Hog Coms	Yes				
<b>4. Transportation (indicate air or ground):</b>							
Ambulance Service	Location	Contact Number	Level of Service				
Plumas 12 (ground)	DP 91	530-257-1803/ Hog Coms	ALS				
Mountain Medics 1 (ground)	DP 50	530-276-4810/ Hog Coms	ALS				
SEMSA Air 1 (air)	Susanville Airport	866-297-1352/ Hog Coms	ALS				
SEMSA Air 2 (air)	Adin School	866-297-1352/ Hog Coms	ALS				
<b>5. Hospitals:</b>							
Hospital Name	Address, Lat & Long Helipad	Contact Number(s)/ Frequency	Travel Time		Trauma Center	Burn Center	Helipad
			Air	Ground			
Banner Lassen Hospital	1800 Spring Ridge Dr Susanville, CA 96130 Lat/Long N 40° 26.27, W 120° 37.67	(530) 252-2096	5 min	10 min	Level 3	<input type="checkbox"/>	<input checked="" type="checkbox"/>
Dignity Health Mercy Medical Center Redding	2175 Rosaline Ave Redding, CA 96001 Lat/Long: N 40° 34.33, W 122° 23.80	(530) 225-7201	39 min	2 hr	Level 2	<input type="checkbox"/>	<input checked="" type="checkbox"/>
UC Davis Medical Center	2315 Stockton Blvd Sacramento, CA 95817 Lat/Long N 38° 33.28, W 121° 27.35	(916) 734-5669	1hr	3 hr	Level 1	<input checked="" type="checkbox"/>	<input checked="" type="checkbox"/>
Renown Regional Medical Center	1155 Mill Street Reno, NV 89502 Lat/Long: N 39° 31.52, W 119° 47.74	(775) 982-4100	32 min	2 hr	Level 2	<input type="checkbox"/>	<input checked="" type="checkbox"/>
<b>6. Special Medical Emergency Procedures</b>							
<b>Line Emergency</b> Crew Supervisor will contact Division Supervisor with patient complaint/condition and location. - Division Group Supervisor Contacts: 1. Closest EMS resource 2. Communications Unit - Communications Unit Contacts: 1. Ground or Air ambulance as requested. 2. Operations 3. Safety 4. Medical Unit - Division Supervisor or designee will serve as point of contact and run medical emergency on assigned channel. 1. A pre-assigned tactical frequency (i.e. CALCORD) should be used for IWI and only for duration of the emergency. - Communications Unit will clear the Command channel for emergency traffic as needed for duration of the need.  <b>Camp Emergency</b> Contact Medical Unit with patient complaint/condition and location. Medical staff will respond to stabilize the patient. - Medical Unit contacts 1. Communications 2. Safety 3. Logistics 4. Operations 5. Crew Supervisor 6. Compl/Claims				<b>Injury Reporting Procedures</b>  Nature of Injury: _____ Location of Patient: _____ Point of Contact: _____ Transportation Requested by: Air _____ Ground _____ Point of Pick-Up: _____ Lat: _____ Long: _____ Patient Unit ID: _____ Is an EMT with Patient: Yes _____ No _____ Age: _____ Sex: Male _____ Female _____  <b>All Emergencies - Secure the area and identified witnesses for later investigation. Keep accurate log of events.</b>			
<input type="checkbox"/> Check box if aviation assets are utilized for rescue. If assets are used, coordinate with Air Operations.							
<b>7. Prepared by (Medical Unit Leader):</b> <p style="text-align: center;">S. McGary</p>				Signature: 			
<b>8. Approved by (Safety Officer):</b> <p style="text-align: center;">D. SARGENTI / D. BROCKMAN (T)</p>				Signature: 			
ICS 206		NIMS IAP		Date/Time: 7/23/20 2000			



## CAL FIRE INCIDENT MANAGEMENT TEAM 3



---

# TRAINING SPECIALIST MESSAGE

### TRAINEES:

Please register with the TNSP as soon as possible in order to receive documented credit for your training assignment. Training is located in the trailer adjacent to check-in.

### TRAINERS/EVALUATORS:

The narrative in the ICS 225 (Performance Evaluation) should reflect the tasks performed by the trainee on the incident. Be as descriptive as possible.

Bring the following with you to register:

- Incident Qualification Card
- Initiated Position Task Book
- Trainee Registration Form

Justin Voyson TNSP 661-547-8629

# INCIDENT TRAINEE REGISTRATION FORM

HOG INCIDENT CA-LMU-003874 JUSTIN VOYSON TNSP 661-547-8629

Complete ALL fields and return to Training Specialist or DROP BOX for entry into database.

Remember to close out training packets with the Training Specialist before DEMOB.

## TRAINEE's DATA

Name (PRINT): \_\_\_\_\_ ICS Trainee Position: \_\_\_\_\_

Request # (A,C,E,or O): \_\_\_\_\_ Agency Designator (Ex. CA-LMU): \_\_\_\_\_

USFS \_\_\_ State \_\_\_ BLM \_\_\_ BIA \_\_\_ NPS \_\_\_ FWS \_\_\_ Local Govt. \_\_\_ DOD \_\_\_ NWS \_\_\_

(CAL FIRE ONLY) Were You Assigned From a Priority Trainee Roster? Yes No

Ordered as a Trainee? Yes No

Date Assigned: \_\_\_\_\_ Cell Phone: \_\_\_\_\_

## Your Qualifications Coordinator: (Chief, Training Officer, etc.)

Name: \_\_\_\_\_

Name of Home Unit: \_\_\_\_\_

Address: \_\_\_\_\_

City: \_\_\_\_\_ State: \_\_\_\_\_ Zip Code: \_\_\_\_\_ Phone: \_\_\_\_\_

Training Officer's Email Address \_\_\_\_\_

## TRAINEE PREREQUISITES

1. Valid Red Card or agency certification card? \_\_\_\_\_ Yes \_\_\_\_\_ No

2. Trainee has current position task book issued by home unit? \_\_\_\_\_ Yes \_\_\_\_\_ No

Current Task Book Progress: (Circle) 0% 25% 50% 75% 90%

Priority Open Tasks in Your Position Task Book

1) \_\_\_\_\_

2) \_\_\_\_\_

## YOUR TRAINER/EVALUATOR's DATA

Trainer/Evaluator Name: \_\_\_\_\_ ICS position on Incident \_\_\_\_\_

Home Unit: \_\_\_\_\_ Agency Designator (ex. CA-LMU): \_\_\_\_\_

Work Address: \_\_\_\_\_ City: \_\_\_\_\_

State: \_\_\_\_\_ Zip Code: \_\_\_\_\_ Cell Phone: \_\_\_\_\_



# INCIDENT MANAGEMENT TEAM 3



## DEMOBILIZATION MESSAGE

Hog Incident  
CA-LMU-003874

We appreciate your efforts during this incident and want to make sure that we get you to your next destination safely and efficiently. When we begin demobilization, a Tentative Demobilization List will be posted in several places around base camp, including the briefing area and the eating area. If you are on this list, please adhere to the following:

### SHOW UP AT THE DESIGNATED TIME

- Show up at the designated time.
- Do not show up early.
- Do not show up late.

A demobilization schedule has been prepared in careful coordination with all essential demobilization functions. Not following the demobilization schedule can have significant negative impacts on the Demobilization Unit staff and all other resources scheduled for demobilization. We do not want you or any other resources to have unnecessary delays. Please adhere to your scheduled demobilization time.

### BE PREPARED FOR A RE-ASSIGNMENT

There may be other incidents in the state that are in need of resources. There is a possibility that some of the resources released from this incident will be immediately assigned to another one. Please make sure you are properly supplied, rested, and nourished while waiting for your designated demobilization time.

### BE THOROUGH AND EFFICIENT

Demobilization begins and ends at the Demobilization Unit. Please follow the instructions given to you when starting the demobilization process. Returning to the Demobilization Unit with a complete and accurate Demobilization Check-Out (ICS-221) form will help prevent any unnecessary delays and ensure you are shown as available for future assignments. Unforeseen delays can occur during the demobilization process, such as mechanical issues discovered while at Ground Support. Plan to visit the Time Unit towards the end of the demobilization process in order to provide an accurate accounting of your time.





# PUBLIC INFORMATION SECTION



Incident Information Line: (530) 282-5714  
Incident Media Line: (530) 282-5714

Incident Updates:  
[www.fire.ca.gov/current\\_incidents](http://www.fire.ca.gov/current_incidents)

STATUS	
Incident Start Date: 7/18/2020	Incident Start Time: 3:30 PM
Cause: Under Investigation	Acres:
Containment:	Total Personnel:

**MEDIA** – The California State Penal Code Section 409.5(d) allows the news media to enter scenes of disaster, riot or civil disturbance. Properly identified members of the news media should not be restricted from entering locations specified within the code. However, this does not include crime scenes, private property and does not imply that the news media may interfere with incident operations while they are in the areas of concern. More information can be found [here](#).

**CAL FIRE SOCIAL MEDIA POLICY** – When assigned to a CAL FIRE incident, you will adhere to the CAL FIRE Social Media Policy, Section 0691. You can find further information about the CAL FIRE Social Media Policy [here](#).

**PHOTOGRAPHS AND VIDEOS OF INCIDENT** – We are in a new era of media. Media no longer means news/broadcast industry, but now refers to anyone that has the capability to shoot video, photographs and post them onto social media sites in a matter of minutes. Unfortunately, we have seen some instances of photographs or videos that have depicted unsafe, unprofessional or embarrassing circumstances which are a serious breach of ethics. When this happens, it reflects poorly on all that are attached to this incident. Posting an inappropriate video, photo or blog comment could expose oneself to unwanted ramifications. It may be unsafe to shoot photos or video and a firefighter who is concentrating on a camera loses their situational awareness.

The Public Information Office would like copies of the video and pictures that you safely took while not in an emergency situation, fire suppression activity or in an overhead assignment. Bring your video and pictures to the Public Information trailer; they will be reviewed and possibly uploaded to our many CAL FIRE social media sites. Remember, we don't want photographs or videos that depict unsafe, unprofessional or embarrassing circumstances, which are a serious breach of ethics.

**LOST AND FOUND** – The Information Section will manage lost and found items for the incident. If you have lost an item please leave your contact information and what you have lost at the Information Section. If you have found an item on the incident, bring the item to the Information Section with your contact information as well. All items left in Lost and Found will be turned over to the local CAL FIRE Shasta Unit.

**MAIL SERVICE** – The Information Section can assist you with sending and receiving mail.



# **FINANCE SECTION MESSAGE**



**CAL FIRE staff; please ensure you start your eFC-33s with the Personnel Time Recorder.**

**Please make sure hired equipment shift tickets are completed for all private vendors and dropped off in the Time Unit by agency personnel / line supervisors only, as well as EERAs.**

**Please report all injuries and suppression damage to the Comp / Claims Unit, no matter how minor.**

**The Finance Section is located in the grass area across from briefing.**

**Federal and Contract resources need to check-in with the Federal Time Unit.**

**OES is located in the back of fairgrounds.**

**ROGER RAINES, FSC1  
TERRY EASTWOOD, DEP. FSC1**

# Shift Ticket Example

EMERGENCY SHIFT TICKET and EVALUATION FORM					Contractor Name	
The responsible Government Officer will complete this form each shift					Fireline Builders	
Incident or Project Name <b>HOG</b>		Incident Number <b>CA-LMU-003874</b>	Request Number <b>E # Here</b>		Operator #1 <b>Bob Smith</b>	Operator #2 <b>Jeff Smith</b>
Agreement Number <b>Obtain from vendor's agreement</b>					Operator Furnished By: <input checked="" type="checkbox"/> Contractor <input type="checkbox"/> Government	
Equipment Make <b>CAT</b>		Equipment Model / Type <b>D6N, Type II E</b>			Operating Supplies Furnished By: <input checked="" type="checkbox"/> Contractor <input type="checkbox"/> Government	
Serial Number <b>6LN3344</b>		Licence Number			Equipment Status <input checked="" type="checkbox"/> Inspected <input checked="" type="checkbox"/> Under Agreement <input type="checkbox"/> Released by Government <input type="checkbox"/> Withdrawn by Contractor	
Equipment Use					Remarks/Comments **  <b>NO DAMAGE / NO CLAIMS</b>	
(Circle) Hours / Days / Miles						
Assignment						
Division B						
Date	Start	Stop	Work	Assignment		
7/28	0700	2400	17	Division B		
7/28	0001	0700	7	Division B		
Vendor Rating					Govt. Rep. Name and Position - PRINT <b>Mike Weber Div. A</b>	
Poor* Avg. Good Exc. N/A					Govt. Rep. Signature <i>Mike Weber</i>	
Met Performance Expectations					Contractor Signature <i>Bob Smith</i>	
Equipment in Safe Working Condition					Date <b>07/20/20</b>	
Operator Skill Level					Time <b>0800</b>	
Operates Safely					Date <b>07/20/20</b>	
Operator's Cooperation Level					Time <b>0800</b>	
Overall Performance					Date <b>07/20/20</b>	
Overall Performance					Time <b>0800</b>	
* NOTE: Any rating of POOR requires an explanation in Comment Section.					CALFIRE 297 (Rev 3-2011)	
**Final evaluation or for more documentation, use an ICS Form 230 or equivalent.						
Pink - Finance		Blue - Home Unit HE Coordinator		Yellow - Vendor		White - Govt Representative

EMERGENCY SHIFT TICKET and EVALUATION FORM					Contractor Name	
The responsible Government Officer will complete this form each shift					Fireline Builders	
Incident or Project Name <b>Hog</b>		Incident Number <b>CA-LMU-003874</b>	Request Number <b>E # Here</b>		Operator #1 <b>Bob Smith</b>	Operator #2
Agreement Number <b>Obtain from vendor's agreement</b>					Operator Furnished By: <input checked="" type="checkbox"/> Contractor <input type="checkbox"/> Government	
Equipment Make <b>CAT</b>		Equipment Model / Type <b>D6N, Type II E</b>			Operating Supplies Furnished By: <input checked="" type="checkbox"/> Contractor <input type="checkbox"/> Government	
Serial Number <b>6LN3344</b>		Licence Number			Equipment Status <input checked="" type="checkbox"/> Inspected <input checked="" type="checkbox"/> Under Agreement <input type="checkbox"/> Released by Government <input type="checkbox"/> Withdrawn by Contractor	
Equipment Use					Remarks/Comments **  <b>NO DAMAGE / NO CLAIMS</b>	
(Circle) Hours / Days / Miles						
Assignment						
Off Shift						
Date	Start	Stop	Work	Assignment		
7/28	0001	0700	7	Off Shift		
7/28	0701	1900	12	Division B		
7/28	1901	2400	5	Off Shift		
Vendor Rating					Govt. Rep. Name and Position - PRINT <b>Mike Weber Div. A</b>	
Poor* Avg. Good Exc. N/A					Govt. Rep. Signature <i>Mike Weber</i>	
Met Performance Expectations					Contractor Signature <i>Bob Smith</i>	
Equipment in Safe Working Condition					Date <b>07/20/20</b>	
Operator Skill Level					Time <b>0600</b>	
Operates Safely					Date <b>07/20/20</b>	
Operator's Cooperation Level					Time <b>0600</b>	
Overall Performance					Date <b>07/20/20</b>	
Overall Performance					Time <b>0600</b>	
* NOTE: Any rating of POOR requires an explanation in Comment Section.					CALFIRE 297 (Rev 3-2011)	
**Final evaluation or for more documentation, use an ICS Form 230 or equivalent.						
Pink - Finance		Blue - Home Unit HE Coordinator		Yellow - Vendor		White - Govt Representative

**FIRING PLAN AND GO / NO GO CHECKLIST**

**Test Firing Plan**

The size and location of the test burn will be large enough and representative of the fuels of the proposed burn area.

**Communications:**

A radio net announcement at the incident will be made prior to firing operations. This will be communicated on tactical and command nets and will identify general location of geographic area to be burned. Special frequencies may or may not be used.

Frequencies:

- 1. Firing Group Tactical
- 2. Air to Ground
- 3. Aerial ignition discreet frequencies:

**Slop-overs and Escapes:**

If an escape/slop-over occurs notify the Division/Group Supervisor, who will take appropriate suppression actions. The Firing Group Supervisor will evaluate whether or not to continue firing and communicate such to the Division Group Supervisor. At all times, appropriate information will be transmitted through the chain of command to the Operations Section Chief.

**Perimeter Firing Sequence:**

The perimeter firing will proceed as follows:

**Conditions:**

- Observed weather conditions: See IAP Weather Forecast
- Fire Behavior Burn Index: See IAP Fire Behavior Analysis

**Sequence of Firing:**

1. Ignition will begin at anchor point(s)
2.
3.
4.
5.

**Aerial Ignition Plan (Section 8344.5 of the CAL FIRE 8300 manual):**

1. Ignition will begin at anchor point(s)
2.
3.
4.
5.

**GO / NO-GO**

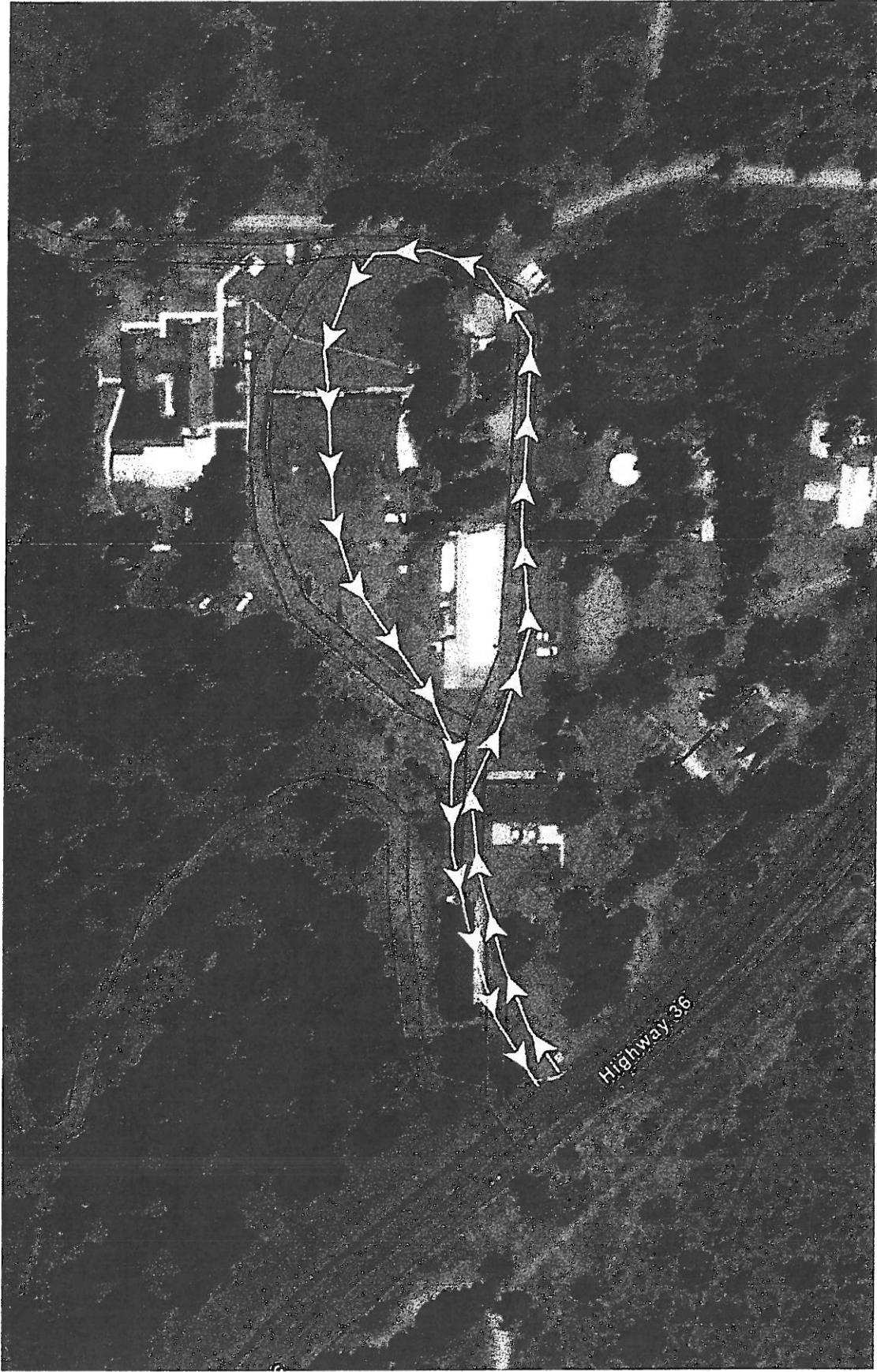
- All personnel briefed
- Weather forecast reviewed
- Resources in place
- Lookouts posted
- Communications systems in place
- Escape routes and safety zones established and made known
- Fire behavior forecast reviewed
- Test Fire is favorable

**APPROVALS and Initials**

- Firing Group Supervisor \_\_\_\_\_
- Division Supervisor \_\_\_\_\_
- Branch Director \_\_\_\_\_
- Air Operations Branch Director \_\_\_\_\_
- Operations Chief \_\_\_\_\_
- Safety Officer \_\_\_\_\_
- Incident Commander \_\_\_\_\_
- Prepared by: \_\_\_\_\_
- Agency/Unit: \_\_\_\_\_
- Date: \_\_\_\_\_



**GROUND SUPPORT**  
LMU Headquarters, 697 CA-36, Susanville, CA 96130



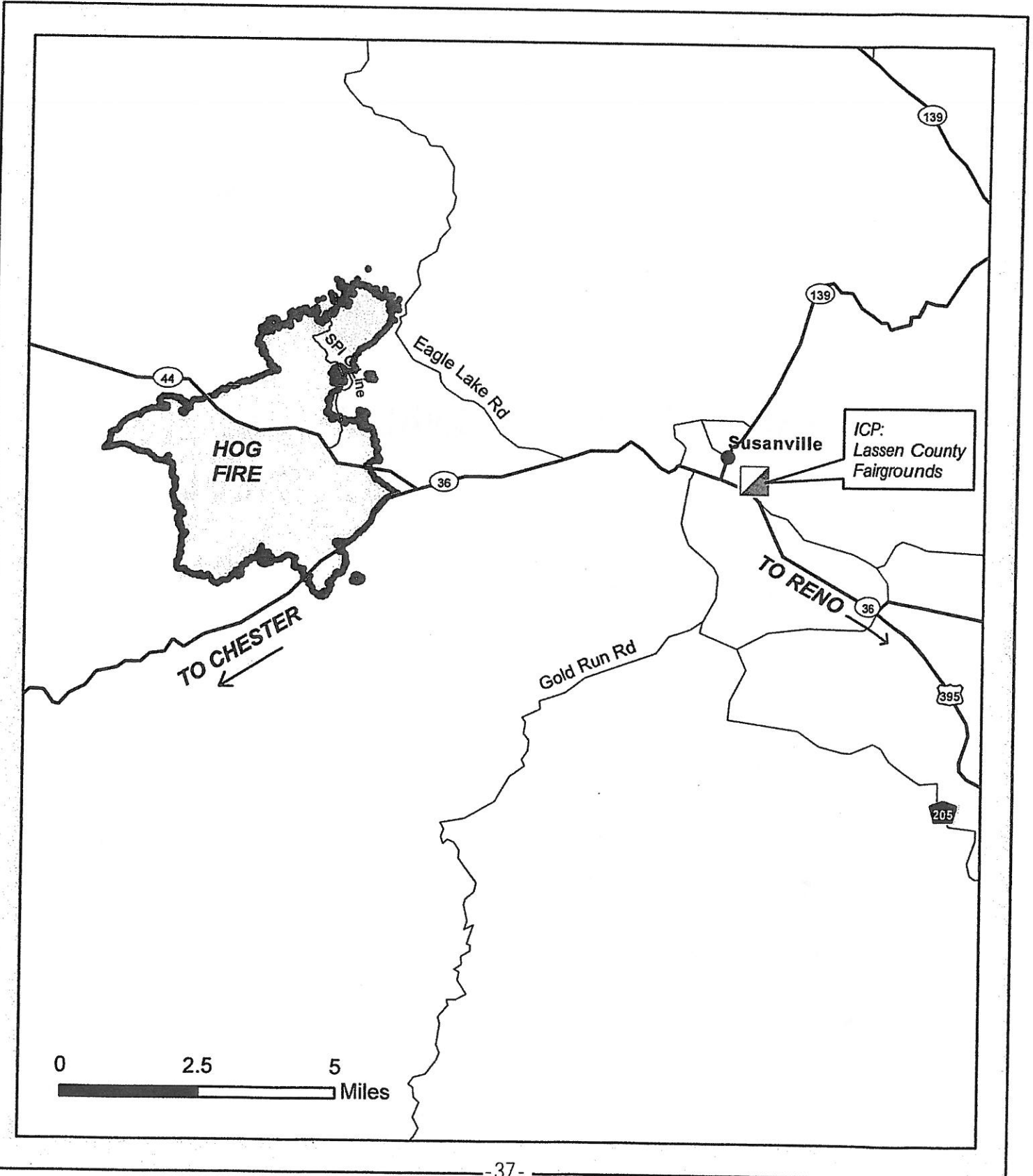
For after-hours mechanical needs, call 925-532-5437.



# Travel Map

## HOG INCIDENT

CA-LMU-003874



**THIS PAGE INTENTIONALLY BLANK**





