

# INCIDENT ACTION PLAN

# HOG INCIDENT

CA-LMU-003874

Friday



## OPERATIONAL PERIOD

7/24/2020 0700  
to  
7/25/2020 0700









## ORGANIZATION ASSIGNMENT LIST (ICS 203)

<b>1. Incident Name:</b> Hog		<b>2. Operational Period: Date From:</b> Time From:		7/24/2020 0700	Date To: Time To:	7/25/2020 0700
<b>3. Incident Commander(s) and Command Staff:</b>			<b>7. Operation Section:</b>			
IC/UC's	B. SEE		Operations	S. NORMAN		
Deputy	B. FARIAS / K. BOHALL (T) / G. BELYEA (T)		Deputy Operations	M. BRUNTON		
Safety Officer	D. SARGENTI / D. BROCKMAN (T)		Night Ops	J. OHS		
Information Officer	D. OLSON / B. MERCADO (T)		Staging Area			
Liaison Officer	M. SMITH / J. DAPPER (T) / J. JARED (CHP)		<b>Branch</b>	<b>I</b>	<b>S. JERRY</b>	
<b>4. Agency/Organization Representatives:</b>			Division/Group	A	R. GAYLOR / R. MITCHINSON (T)	
Agency/Organization	Name		Division/Group	C	J. KEOWN	
CALFIRE LMU Line Officer	L. CALDWELL		Division/Group	D / E	R. PETERSON	
USFS Agency Rep	P. MARTINS		Division/Group			
USFS Agency Admin	B. DRAKE		Division/Group			
Cal OES	K. BAILEY		<b>Branch</b>	<b>V</b>	<b>R. DANIELSEN</b>	
BLM Admin	E. RYAN		Division/Group	F / G	M. MILOJEVICH	
CHP	LT. A. POYNER		Division/Group	J / L	B. WILSON	
OES Mngr.	S. ROJAS		Division/Group			
LCSO Agency Rep	M. CARNEY		Division/Group			
CDCR	T. MAINE		Division/Group			
CCC	C. HARRIS		<b>Branch</b>	<b>IX</b>	<b>J. PIERCE / J. GAHAGAN (T)</b>	
			Division/Group	O	N. GARCIA	
			Division/Group	Q	J. REYES / J. BAKER (T)	
			Division/Group	R	G. ENGEN / B. WRIGHT (T)	
			Division/Group			
			<b>Branch</b>	<b>WEST CONTINGENCY</b>	<b>G. DEGRAFFENREID (12 hr)</b>	
			Division/Group	WEST CONTINGENCY		
<b>5. Planning Section:</b>			<b>Branch</b>	<b>NORTH CONTINGENCY</b>	<b>M. JOHNSON (12 hr)</b>	
Chief	B. BLOXHAM		Division/Group	NORTH CONTINGENCY		
Deputy	S. DEBENEDET / G. GARCIA		Division/Group			
Resource Unit	L. PLATA / T. BYRD / M. SELZER (T) / J. HEALD (T)		Division/Group			
Situation Unit	T. TUGGLE / M. THAU (T)		<b>Branch</b>	<b>Staging</b>		
Documentation Unit			Division/Group			
Demobilization Unit	E. CAMPBELL		Division/Group	Susanville Support		
GISS	S. STANISH		Division/Group	Water Supply Group	W. DARNALL	
FBAN	B. NEWMAN		Division/Group			
IMET	T. FUENTES		Division/Group			
Training Tech Spec	J. VOYSON		<b>Air Operations Branch</b>		<b>Director:</b>	M. STANFORD / S. HAWKINS (T)
Crew Tech Spec	M. O'NEIL		Air Support Group Supervisor		C. WILSON	
<b>6. Logistics Section</b>			Air Tactical Group Supervisor		S. MCGREGOR	
Chief	R. TOVAR		Helibase Manager		J. COLLINS	
Deputy	R. CLUFF					
Supply Unit	J. BECKMAN / J. PECKHAM (T)		<b>8. Finance/Administration Section:</b>			
Facilities Unit	R. HOSTETLER		Chief	R. RAINES		
Ground Support Unit	A. WHITLOCK		Deputy	T. EASTWOOD / P. AGUADA (T)		
Communications Unit	K. JOHNSON		Time Unit	J. OROZCO JR. / Fed Finance T. FORK		
Medical Unit	K. FORTNEY		Procurement Unit	K. SHAEFER		
Ordering Manager	J. SCHEID		Comp/Claims Unit	A. HESTERLY		
Hired Equip. Tech Spec	A. WHITLOCK		Cost Unit	D. SOLIS (T)		
<b>Prepared By: Name:</b>	G. GARCIA	<b>Position/Title:</b>	PSC	<b>Signature:</b> 		
<b>ICS 203</b>		<b>Date/Time:</b>	7/23/2020 2000	<small>NIMS IAP</small>		



# Hog Fire Forecast

FORECAST NO: 4

NAME OF FIRE: Hog  
UNIT: CALFIRE Team 3  
PREDICTION FOR: Friday Shift  
SHIFT DATE: July 24, 2020  
FORECAST ISSUED: 1900 PDT July 23, 2020

Incident Meteorologist (IMET): Tony Fuentes  
Email: [Tony.Fuentes@noaa.gov](mailto:Tony.Fuentes@noaa.gov)  
Cell: (240) 778-5300

A steady warming and drying trend along with daily afternoon west-southwest breezes will prevail through the weekend. Afternoon cumulus build-ups will again develop today with the best development north of the fire. A few isolated showers and thunderstorms are possible by Sunday and Monday.

### TODAY (FRIDAY):

WEATHER: Partly cloudy with a few afternoon cumulus cloud build ups.  
WINDS (EYE LEVEL): Southwest around 8 - 14 mph after 1300.  
MAX TEMPERATURES: 81 - 87°. 91° at ICP Camp.  
MINIMUM HUMIDITY: 17-23%  
TRANSPORT WIND: SW 10 - 20 mph  
LAL 1 HAINES: 4

### TONIGHT (FRIDAY NIGHT):

WEATHER: Mostly clear.  
MIN TEMPERATURES: 48 - 53°F  
MAX HUMIDITY: 55 - 60%  
WINDS (EYE LEVEL): Downslope 2 - 6 mph.  
LAL: 1. HAINES: 3

### SATURDAY:

WEATHER: Mostly Sunny.  
WINDS (EYE LEVEL): Upslope 3 - 7 mph becoming west 8 - 12 mph by late afternoon.  
MAX TEMPERATURES: 82 - 88°. 93° at ICP Camp.  
MINIMUM HUMIDITY: 14 - 19%  
TRANSPORT WIND: SW 10 - 15 mph.  
LAL 1 HAINES: 4

### **Extended Forecast Table:**

	Sun Jul 26	Mon Jul 27	Tue Jul 28	Wed Jul 29
<b>Wx</b>	10-15% chance Showers/T-storms	10-15% chance Showers/T-storms	Partly Cloudy	Mostly Sunny
<b>Wind:</b>	SSW 8-12 mph	SSW 8-12 mph	SW 9-14 mph Gusts 20 mph	SW 12-16 mph Gusts 25 mph
<b>Max Temp / Min RH</b>	84-89° 13-18%	83-88° 17-22%	83-88° 13-19%	82-87° 11-16%
<b>Min Temp / Max RH</b>	51-56° 40-45%	52-57° 45-50%	52-57° 45-50%	51-56° 42-47%
<b>CWR</b>	<5%	<5%	0%	0%
<b>Haines</b>	5	5	5	5

# FIRE BEHAVIOR FORECAST

<b>FORECAST NUMBER:</b> 4	<b>TYPE OF FIRE:</b> Wildfire
<b>FIRE NAME:</b> Hog	<b>OPERATIONAL PERIOD:</b> 7/24/20 – 7/25/20
<b>DATE ISSUED:</b> 7/24/2020	<b>TIME ISSUED:</b> 0600
<b>UNIT:</b> CA-LMU-3874	<b>SIGNED:</b> <i>Brian Newman</i> <b>Typed/printed:</b> Brian Newman FBAN

## INPUTS

### WEATHER SUMMARY

High pressure continues to build into the area, bringing warmer and drier conditions. Daytime temperatures will be around 82-87° decreasing to 48-53° overnight. Minimum relative humidity will be down to 17-23% in the afternoon, increasing to 55-60% overnight. Winds will be light early becoming west at 8-14 MPH in the afternoon turning to slope driven 2-6 mph at night. There will be a line of clouds to the north, moving roughly west to east. These will have no threat of adverse weather to the fire area. There will be a weak inversion that will clear around 1100, potentially increasing fire activity earlier in the day.

## OUTPUTS

### FIRE BEHAVIOR

**GENERAL:** The fire is burning in heavy timber and slash intermixed with bitterbrush and Manzanita, along with clear cut plots littered with moderate to heavy slash. Fuel moistures in the bitterbrush are nearing record levels, fuel moistures in Manzanita are much higher and timber fuel moistures very low due to drought conditions in the area. The fire will continue to burn actively when aligned with the wind and slope.

Timber and slash: Rate of spread 5-7 ft/min // Flame length 2-4 feet // Spotting 500 feet // PIG 80%

Bitterbrush: Rate of spread 11-13 ft/min // Flame lengths 7-9 feet // Spotting ¼ mile feet // PIG 70%

Manzanita: Rate of spread 5-6 ft/min // Flame lengths 2-4 ft // Spotting 100-200 feet // PIG 60%

### SPECIFIC:

Branch I: The fire in this Branch is primarily burning in the bitterbrush and timber slash. Moisture from rainfall has dried and has little effect on the fuels now. Topographic features in the Susan river drainage and along Hwy 36 can channel winds in various directions. Unburned islands can become active as the temperatures and winds increase.

Branch V: Fire behavior is low to moderate but still has potential for activity within the interior islands with the increase in wind speed and rise in temperatures.

Branch IX: This Branch has the most exposure to Southwest winds and may see more smoldering spots become active. The Manzanita in the plantation areas is slowing fire spread due to higher fuel moistures. The timber understory and clear-cut plots contain heavy dead and down and have a higher probability to contain smoldering spots fires, and unburned interior islands may flare up.

**AIR OPERATIONS:** A weak inversion around 6500 feet may inhibit air operations until midmorning, but skies will clear for the rest of the day. Upper level winds will be south to southwest.

### SAFETY

- Be heads up for fire weakened timber, we've already had many fall within the fire area
- Don't let down your guard down. Tragedies have occurred during mop up
- Ash pits may still contain high heat, watch your footing near burned out stump holes





# CAL FIRE INCIDENT MANAGEMENT TEAM 3



1. INCIDENT NAME: <b>Hog</b>		2. DATE PREPARED: July 23, 2020	3. TIME PREPARED: 1500
4. PREPARED BY: David Brockman SOF1(t)	5. LEADER NAME: David Sargenti SOF1	6. OPERATIONAL PERIOD: 7/24/2020 0700 TO 7/25/2020 0700	

# SAFETY MESSAGE

***SAFETY DOES NOT STOP AT THE BRIEFING!  
KEEP IT IN YOUR MIND AND REFLECT IT IN YOUR ACTIONS!  
BE A ROLE MODEL FOR OTHERS!***

- Take all COVID 19 precautions.
- Trees are weakened due to fire activity. Look Up, Down, and Around.
- Make sure everyone gets a briefing!
- Monitor your hydration/nutrition intake and keep adequate supplies of each.
- Watch for utility poles that have been weakened by fire, they may fall suddenly.
- Drive defensively, watch your speed and use warning lights when needed.
- Watch for civilian traffic in the fire area.

"Follow me,  
this way's  
always safe!"



## COMPLACENCY

**LOOK OUTS  
COMMUNICATIONS  
ESCAPE ROUTES  
SAFETY ZONES**



# INCIDENT RISK ANALYSIS ICS 215A




BRANCH	HAZARDOUS ACTIONS/ CONDITIONS	MITIGATIONS/WARNINGS/REMEDIES
ALL	COVID 19	<ul style="list-style-type: none"> <li>Wear mask when in camp and around the public.</li> <li>Wash/sanitize hands often.</li> <li>Maintain social distancing when applicable.</li> <li>Complete daily COVID screening process.</li> </ul>
ALL	INCIDENT WITHIN AN INCIDENT (IWI)	<ul style="list-style-type: none"> <li>Review medical plan for proper notification procedures.</li> </ul>
ALL	DRIVING HAZARDS	<ul style="list-style-type: none"> <li><b>Watch your speeds.</b></li> <li>Watch for civilian traffic on the roadways.</li> <li>Drive defensively! Expect the unexpected.</li> <li>Watch for road degradation and dusty conditions.</li> <li>Be aware of debris in the roadways from rollout, suppression operations and fire damage to poles.</li> </ul>
ALL	WEATHER	<ul style="list-style-type: none"> <li>Be aware of changing wind conditions.</li> <li>Watch for changing weather conditions.</li> </ul>
ALL	PERSONNEL SAFETY	<ul style="list-style-type: none"> <li>All personnel are responsible for their personal safety.</li> <li>Immediately report any suspicious activity.</li> <li>Be sure to wear all required PPE while on the fire line.</li> </ul>
ALL	POWER LINES	<ul style="list-style-type: none"> <li>Be cautious if you encounter any down lines.</li> <li>Make appropriate notifications if found.</li> </ul>
ALL	HYDRATION	<ul style="list-style-type: none"> <li>Drink water before, during and after each shift.</li> <li>Be alert for signs of heat stress in yourself and others.</li> </ul>
ALL	FIRE AND DROUGHT WEAKENED TREES/SNAG HAZARDS	<ul style="list-style-type: none"> <li>Follow Hazard Tree Safety Guidelines (IRPG p. 22).</li> <li>Many of the trees within the fire area and along roadways are stressed due to drought conditions and burn times.</li> </ul>
ALL	MOP UP	<ul style="list-style-type: none"> <li>Wear all appropriate PPE.</li> <li>Watch for stump holes.</li> <li>Do not get complacent.</li> </ul>
ALL	COMMUNICATIONS	<ul style="list-style-type: none"> <li>Check the communication plan for frequency assignments.</li> <li>Be clear and concise when talking on the radio.</li> <li>Use human repeaters as needed.</li> </ul>
ALL	BRIEFINGS	<ul style="list-style-type: none"> <li>Make sure <b>everyone</b> gets a briefing on the plan for the day.</li> <li>Document this on your ICS 214.</li> </ul>
ALL	LCES	<ul style="list-style-type: none"> <li>Ensure that LCES is being utilized.</li> </ul>
ALL	HELICOPTER AWARENESS	<ul style="list-style-type: none"> <li>Watch for rotor wash when working near helicopters.</li> <li>Understand that hazardous trees may react to helicopters overhead.</li> <li>Monitor assigned aircraft frequencies.</li> </ul>
ALL	HEAVY EQUIPMENT	<ul style="list-style-type: none"> <li><b>Watch out for heavy equipment traffic!</b></li> <li>Be aware of heavy equipment working in the area.</li> <li>Be watchful around heavy equipment, they may not see you.</li> </ul>
<b>Incident Name:</b>  <h2 style="text-align: center;">Hog</h2>		Date Prepared: 7/23/2020 Prepared by: David Brockman SOF1 (T)
		Operational Period: 7/24/2020-7/25/2020  0700-0700

*In readiness is all*



# ASSIGNMENT LIST (ICS 204 WF)

CONTROLLED UNCLASSIFIED  
INFORMATION/BASIC

<b>1. Incident Name:</b>		<b>2. Operational Period:</b>				<b>3. Branch</b>		<b>Division</b>	
<b>Hog</b>		Date From: 07/24/20		Date To: 07/25/20		<b>I</b>		<b>A</b>	
		Time From: 0700		Time To: 0700		<b>Page 1 of 2</b>		<b>Alpha</b>	
<b>4. Operations Personnel:</b>									
Operations Section Chief: <b>S. NORMAN</b>				Night Ops: <b>J. OHS</b>					
Branch Director: <b>S. JERRY</b>				Branch Safety: <b>S. LINK / N. LA RUSSO (T)</b>					
Division/Group Supervisor: <b>R. GAYLOR / R. MITCHINSON (T)</b>				Air Attack: <b>S. MCGREGOR</b>					
<b>5. Resources Assigned:</b>		<b>** Resources Below in Bold are 12 Hour **</b>							
Resource Identifier	ALS	LWD	Leader	Personnel	Request #	Hours	Reporting Location		
STC CZU 9171C			T. RICHTER	16	E-78	0700-0700	DP 1		
ENG XMO 4125			S. ADAMS	3	E-156	0700-0700	DP 1		
ENG Lfv 826			D. POOL	4	E-417	0700-0700	DP 1		
<b>CRW T2 C-29</b>			<b>R. Castro</b>	<b>20</b>	<b>C-29</b>	<b>0700-1900</b>	<b>DP 1</b>		
<b>CRW T2 C-31</b>			<b>J. Coke</b>	<b>20</b>	<b>C-31</b>	<b>0700-1900</b>	<b>DP 1</b>		
<b>CRW T2 C-33</b>			<b>S. LANGBERG</b>	<b>20</b>	<b>C-33</b>	<b>0700-1900</b>	<b>DP 1</b>		
<b>CRW T2 C-34</b>			<b>B. Larkin</b>	<b>20</b>	<b>C-34</b>	<b>0700-1900</b>	<b>DP 1</b>		
<b>CRW T2 C-79</b>			<b>N. FRANCO-GUZMAN</b>	<b>20</b>	<b>C-79</b>	<b>0700-1900</b>	<b>DP 1</b>		
DOZ PVT E-25					E-25	0700-0700	DP 1		
DOZ PVT E-31					E-31	0700-0700	DP 1		
WT PVT E-110					E-110	0700-0700	DP 1		
WT PVT E-252			B. TORRES	2	E-252	0700-0700	DP 1		
<b>FALM O-385</b>			<b>M. PUNTRI</b>	<b>2</b>	<b>O-385</b>	<b>0700-1900</b>	<b>DP 1</b>		
<b>FALM O-386</b>			<b>R. DENIZ</b>	<b>2</b>	<b>O-386</b>	<b>0700-1900</b>	<b>DP 1</b>		
<b>FALM O-388</b>					<b>O-388</b>	<b>0700-1900</b>	<b>DP 1</b>		
<b>READ MARTIN</b>			<b>J. MARTIN</b>	<b>1</b>	<b>O-16</b>	<b>0700-1900</b>	<b>DP 1</b>		
<b>READ MERREFIELD</b>			<b>J. MERREFIELD</b>	<b>1</b>		<b>0700-1900</b>	<b>DP 1</b>		
FEMP MCCARTHY			M. MCCARTHY	1	O-251	0700-0700	DP 1		
<b>6. Work Assignments:</b>									
Mop up and Patrol 400'									
<b>7. Special Instructions:</b>									
<b>8. Communications</b>									
Name	Ch	Function	Rx Freq	Rx Tone	Tx Freq	Tx Tone	Notes		
C11 T15	1	COMMAND	151.1675	103.5 (T8)	159.3975	162.2 (T15)	Roop Mtn covers NE side of Branch V		
C11 T14	2	COMMAND	151.1675	103.5 (T8)	159.3975	151.4 (T14)	Shaffer Mtn covers SW side of Branch V		
CO FIRE	3	COMMAND	154.4450	0.0	154.0100	110.9 (T1)	Tone 1, Shaffer Mtn; Available for Susanville Support / Water Supply Group		
CDF T29	4	TACTICAL	151.3475	192.8 (T16)	151.3475	192.8 (T16)			
CDF T23	14	AIR TO GROUND	159.4500	192.8 (T16)	159.4500	192.8 (T16)			
CALCORD	15	MEDICAL	156.0750	156.7 (T6)	156.0750	156.7 (T6)			
GUARD	16	EMERGENCY	168.6250	0.0	168.6250	110.9 (T1)	EMERGENCY USE ONLY		
<b>9. Prepared by: Name:</b>		T. BYRD			RESL				
					Signature: 				
<b>ICS 204</b>		Date/Time: 7/23/2020			2200		Personnel Count: 132		

NIMS IAP

CONTROLLED UNCLASSIFIED INFORMATION/BASIC



# ASSIGNMENT LIST (ICS 204 WF)

CONTROLLED UNCLASSIFIED  
INFORMATION/BASIC

<b>1. Incident Name:</b> <p style="text-align: center; font-size: 1.2em;">Hog</p>		<b>2. Operational Period:</b> Date From: 07/24/20    Date To: 07/25/20 Time From: 0700    Time To: 0700				<b>3. Branch</b> <p style="text-align: center; font-size: 1.5em;">I</p>		<b>Division</b> <p style="text-align: center; font-size: 1.5em;">C</p>	
<b>4. Operations Personnel:</b>						Page 1 of 2		Charlie	
Operations Section Chief: <b>S. NORMAN</b>				Night Ops: <b>J. OHS</b>					
Branch Director: <b>S. JERRY</b>				Branch Safety: <b>S. LINK / N. LA RUSSO (T)</b>					
Division/Group Supervisor: <b>J. KEOWN</b>				Air Attack: <b>S. MCGREGOR</b>					
<b>5. Resources Assigned:</b>		<b>** Resources Below in Bold are 12 Hour **</b>							
Resource Identifier	ALS	LWD	Leader	Personnel	Request #	Hours	Reporting Location		
STC NEU 9230C			J. MORRIS	16	E-26	0700-0700	DP 1		
STC OES 3800C			C. Burns	17	E-76	0700-0700	DP 1		
STG TGU 9252G			L. THOMAS		C-7	0700-0700	DP 1		
<b>CRW T2 C-5</b>			<b>B. WEBB</b>	17	<b>C-5</b>	<b>0700-1900</b>	<b>DP 1</b>		
<b>CRW T2 C-30</b>			<b>L.TANIA</b>	20	<b>C-30</b>	<b>0700-1900</b>	<b>DP 1</b>		
<b>CRW T2 C-62</b>			<b>S. ORTIZ</b>	20	<b>C-62</b>	<b>0700-1900</b>	<b>DP 1</b>		
<b>CRW T2 C-73</b>			<b>J. CISNEROS</b>	20	<b>C-73</b>	<b>0700-1900</b>	<b>DP 1</b>		
<b>CRW T2 C-74</b>			<b>A. CASTRO</b>	20	<b>C-74</b>	<b>0700-1900</b>	<b>DP 1</b>		
DOZ TGU 2544				2	E-36	0700-0700	DP 1		
DOZ HUU 1240			K. WOHLERS	4	E-89	0700-0700	DP 1		
DOZ PVT E-91			T. OFERALL	1	E-91	0700-0700	DP 1		
DOZ PVT E-276			D. DIAL	2	E-276	0700-0700	DP 1		
DOZ PVT E-277					E-277	0700-0700	DP 1		
WT PVT E-22			M. ESPINOZE	2	E-22	0700-0700	DP 1		
WT PVT E-32			R. POTTER	2	E-32	0700-0700	DP 1		
WT PVT E-57			R. RODGERS	2	E-57	0700-0700	DP 1		
WT PVT E-111			J. STOVER	2	E-111	0700-0700	DP 1		
WT PVT E-113			E. LEEMAN	2	E-113	0700-0700	DP 1		
<b>6. Work Assignments:</b> Improve line Mop up and patrol 200'									
<b>7. Special Instructions:</b>									
<b>8. Communications</b>									
Name	Ch	Function	Rx Freq	Rx Tone	Tx Freq	Tx Tone	Notes		
C11 T15	1	COMMAND	151.1675	103.5 (T8)	159.3975	162.2 (T15)	Roop Mtn covers NE side of Branch V		
C11 T14	2	COMMAND	151.1675	103.5 (T8)	159.3975	151.4 (T14)	Shaffer Mtn covers SW side of Branch V		
CO FIRE	3	COMMAND	154.4450	0.0	154.0100	110.9 (T1)	Tone 1, Shaffer Mtn; Available for Susanville Support / Water Supply Group		
CDF T31	6	TACTICAL	159.3825	192.8 (T16)	159.3825	192.8 (T16)			
CDF T23	14	AIR TO GROUND	159.4500	192.8 (T16)	159.4500	192.8 (T16)			
CALCORD	15	MEDICAL	156.0750	156.7 (T6)	156.0750	156.7 (T6)			
GUARD	16	EMERGENCY	168.6250	0.0	168.6250	110.9 (T1)	EMERGENCY USE ONLY		
<b>9. Prepared by: Name:</b>		T. BYRD		RESL		Signature:			
<b>ICS 204</b>		Date/Time: 7/23/2020		2200		Personnel Count: 149			

NIMS IAP

CONTROLLED UNCLASSIFIED INFORMATION/BASIC





# ASSIGNMENT LIST (ICS 204 WF)

CONTROLLED UNCLASSIFIED  
INFORMATION//BASIC

<b>1. Incident Name:</b> <p style="text-align: center; font-size: 1.2em;">Hog</p>	<b>2. Operational Period:</b> Date From: 07/24/20    Date To: 07/25/20 Time From: 0700        Time To: 0700	<b>3. Branch</b> <b>Division</b> <p style="text-align: center; font-size: 1.5em;">I                    D / E</p>
--	---	---

<b>4. Operations Personnel:</b>		Page 1 of 1
Operations Section Chief: <b>S. NORMAN</b>	Night Ops: <b>J. OHS</b>	
Branch Director: <b>S. JERRY</b>	Branch Safety: <b>S. LINK / N. LA RUSSO (T)</b>	
Division/Group Supervisor: <b>R. PETERSON</b>	Air Attack: <b>S. MCGREGOR</b>	

5. Resources Assigned:		** Resources Below in Bold are 12 Hour **					
Resource Identifier	ALS	LWD	Leader	Personnel	Request #	Hours	Reporting Location
STC XSJ 4178C			S. ARGANBRIGHT	18	E-82	0700-0700	DP 1
STC XTB 4225C			C. SALERNO	20	E-85	0700-0700	DP 1
ENG LOO 4822				3	E-155	0700-0700	DP 1
STG BTU 9212G			K. FINKENKELLER	30	C-25	0700-0700	DP 1
<b>CRW T2 C-63</b>			<b>J. DELFIN</b>	20	<b>C-63</b>	<b>0700-1900</b>	<b>DP 1</b>
<b>CRW T2 C-64</b>			<b>F. PEREZ</b>	20	<b>C-64</b>	<b>0700-1900</b>	<b>DP 1</b>
<b>CRW T2 DIAMOND MTN</b>						<b>0700-1900</b>	<b>DP 1</b>
DOZ LMU 2241			B. MALLERY	2	E-5	0700-0700	DP 1
WT PVT E-42				2	E-42	0700-0700	DP 1
WT PVT E-114			J. SHELTON	2	E-114	0700-0700	DP 1
WT PVT E-253			B. WOOTEN	2	E-253	0700-0700	DP 1
<b>FALM O-381</b>				2	<b>O-381</b>	<b>0700-1900</b>	<b>DP 1</b>

**6. Work Assignments:**  
 Improve line  
 Mop up and patrol 200'

**7. Special Instructions:**

8. Communications							
Name	Ch	Function	Rx Freq	Rx Tone	Tx Freq	Tx Tone	Notes
C11 T15	1	COMMAND	151.1675	103.5 (T8)	159.3975	162.2 (T15)	Roop Mtn covers NE side of Branch V
C11 T14	2	COMMAND	151.1675	103.5 (T8)	159.3975	151.4 (T14)	Shaffer Mtn covers SW side of Branch V
CO FIRE	3	COMMAND	154.4450	0.0	154.0100	110.9 (T1)	Tone 1, Shaffer Mtn; Available for Susanville Support / Water Supply Group
CDF T31	6	TACTICAL	159.3825	192.8 (T16)	159.3825	192.8 (T16)	
CDF T23	14	AIR TO GROUND	159.4500	192.8 (T16)	159.4500	192.8 (T16)	
CALCORD	15	MEDICAL	156.0750	156.7 (T6)	156.0750	156.7 (T6)	
GUARD	16	EMERGENCY	168.6250	0.0	168.6250	110.9 (T1)	EMERGENCY USE ONLY

<b>9. Prepared by: Name:</b> T. BYRD	RESL	Signature:	
ICS 204	Date/Time: 7/23/2020	Personnel Count: 121	2200





# ASSIGNMENT LIST (ICS 204 WF)

CONTROLLED UNCLASSIFIED  
INFORMATION//BASIC

<b>1. Incident Name:</b> <p style="text-align: center; font-size: 1.2em;">Hog</p>	<b>2. Operational Period:</b> Date From: 07/24/20    Date To: 07/25/20 Time From: 0700    Time To: 0700	<b>3. Branch</b> <b>Division</b> <p style="text-align: center; font-size: 1.5em;">V                  J / L</p>
--	---	---

<b>4. Operations Personnel:</b>		Page 1 of 1
Operations Section Chief: <b>S. NORMAN</b>	Night Ops: <b>J. OHS</b>	
Branch Director: <b>R. DANIELSEN</b>	Branch Safety:	
Division/Group Supervisor: <b>B. WILSON</b>	Air Attack: <b>S. MCGREGOR</b>	

5. Resources Assigned:		** Resources Below in Bold are 12 Hour **					
Resource Identifier	ALS	LWD	Leader	Personnel	Request #	Hours	Reporting Location
STC XLK 2100C			D. EMMEL	19	E-271	0700-0700	DP 50
T/F XLS 3075			S. HITCHCOCK	21	E-142	0700-0700	DP 50
<b>CRW T2 C-27</b>			<b>C. MCDERMOTT-ROE</b>	20	<b>C-27</b>	<b>0700-1900</b>	<b>DP 50</b>
<b>CRW T2 C-28</b>			<b>A. MENDOZA</b>	20	<b>C-28</b>	<b>0700-1900</b>	<b>DP 50</b>
<b>CRW T2 C-35</b>			<b>N. RAFIKOV</b>	20	<b>C-35</b>	<b>0700-1900</b>	<b>DP 50</b>
<b>CRW T2 C-36</b>			<b>A. HERGERT</b>	20	<b>C-36</b>	<b>0700-1900</b>	<b>DP 50</b>
<b>CRW T2 C-65</b>			<b>A. TOMTHAK</b>	20	<b>C-65</b>	<b>0700-1900</b>	<b>DP 50</b>
WT PVT E-23			D. HURL	2	E-23	0700-0700	DP 50
WT PVT E-41			D. KIRACK	2	E-41	0700-0700	DP 50
WT PVT E-107			H. MCGOWAN	2	E-107	0700-0700	DP 50
WT PVT E-338			J. GRAHAM	2	E-338	0700-0700	DP 50
<b>FALM O-387</b>			<b>S. VOORHES</b>	2	<b>O-387</b>	<b>0700-1900</b>	<b>DP 50</b>
FEMP DACPANO			J. DACPANO	1	O-357	0700-0700	DP 50
FEMP HAUT			M. HAUT	1	O-358	0700-0700	DP 50

**6. Work Assignments:**  
Mop up and patrol 300'

**7. Special Instructions:**

8. Communications							
Name	Ch	Function	Rx Freq	Rx Tone	Tx Freq	Tx Tone	Notes
C11 T15	1	COMMAND	151.1675	103.5 (T8)	159.3975	162.2 (T15)	Roop Mtn covers NE side of Branch V
C11 T14	2	COMMAND	151.1675	103.5 (T8)	159.3975	151.4 (T14)	Shaffer Mtn covers SW side of Branch V
CO FIRE	3	COMMAND	154.4450	0.0	154.0100	110.9 (T1)	Tone 1, Shaffer Mtn; Available for Susanville Support / Water Supply Group
VFIRE 24	10	TACTICAL	154.2725	156.7 (T6)	154.2725	156.7 (T6)	May also be used by Susanville
CDF T23	14	AIR TO GROUND	159.4500	192.8 (T16)	159.4500	192.8 (T16)	
CALCORD	15	MEDICAL	156.0750	156.7 (T6)	156.0750	156.7 (T6)	
GUARD	16	EMERGENCY	168.6250	0.0	168.6250	110.9 (T1)	EMERGENCY USE ONLY

**9. Prepared by: Name:**                      T. BYRD    RESL

Signature:

**ICS 204**    Date/Time: 7/23/2020    2200    Personnel Count: 152

NIMS IAP

CONTROLLED UNCLASSIFIED INFORMATION//BASIC

# ASSIGNMENT LIST (ICS 204 WF)

CONTROLLED UNCLASSIFIED  
INFORMATION//BASIC

<b>1. Incident Name:</b> <p style="text-align: center; font-size: 1.2em;">Hog</p>		<b>2. Operational Period:</b> Date From: 07/24/20    Date To: 07/25/20 Time From: 0700    Time To: 0700				<b>3. Branch</b> <p style="text-align: center; font-size: 1.5em;">IX</p>		<b>Division</b> <p style="text-align: center; font-size: 1.5em;">O</p>	
<b>4. Operations Personnel:</b>						Page 1 of 2		Oscar	
Operations Section Chief: <b>S. NORMAN</b>				Night Ops: <b>J. OHS</b>					
Branch Director: <b>J. PIERCE / J. GAHAGAN (T)</b>				Branch Safety: <b>J. WILLIAMS / L. PALMER (T)</b>					
Division/Group Supervisor: <b>N. GARCIA</b>				Air Attack: <b>S. MCGREGOR</b>					
<b>5. Resources Assigned:</b>		<b>** Resources Below in Bold are 12 Hour **</b>							
Resource Identifier	ALS	LWD	Leader	Personnel	Request #	Hours	Reporting Location		
STC SHU 9243C			D. GYVES	18	E-27	0700-0700	DP 50		
STC SKU 9260C			K. CUNNINGHAM	18 +/-	E-15	0700-0700	DP 50		
STC XNE 4101C			J. SMITH	19	E-83	0700-0700	DP 50		
STC XCC 2025C			J. VIERA	22	E-269	0700-0700	DP 50		
STF MVU 9336F			K. ZINGHEIM	11	E-357	0700-0700	DP 50		
<b>CRW TRINITY IHC</b>			<b>R. REOSA III</b>	16	<b>C-12</b>	<b>0700-1900</b>	<b>DP 50</b>		
<b>CRW SMITH RIVER IHC</b>			<b>D. DENLINGER</b>	20	<b>C-13</b>	<b>0700-1900</b>	<b>DP 50</b>		
<b>CRW PVT C-67</b>			<b>M. OJEDA</b>	20	<b>C-67</b>	<b>0700-1900</b>	<b>DP 50</b>		
<b>CRW T2 C-80</b>			<b>A. CORONADO</b>	20	<b>C-80</b>	<b>0700-1900</b>	<b>DP 50</b>		
DOZ BTU 2140			Z. GUYZMAN	3	E-50	0700-0700	DP 50		
DOZ PVT E-96			H. MCGOWAN	1	E-96	0700-0700	DP 50		
DOZ PVT E-102			M. MURDOCK	1	E-102	0700-0700	DP 50		
DOZ PVT E-279			S. MOORE	2	E-279	0700-0700	DP 50		
WT PVT E-44			P. MARYMEE	2	E-44	0700-0700	DP 50		
WT PVT E-108			M. SISSON	2	E-108	0700-0700	DP 50		
WT PVT E-109			D. OAILAR	2	E-109	0700-0700	DP 50		
HEQB HAM			B. HAM	1	O-367	0700-0700	DP 50		
<b>FALM O-384</b>			<b>R. MADDEN</b>	2	<b>O-384</b>	<b>0700-1900</b>	<b>DP 50</b>		
<b>6. Work Assignments:</b> Improve line Mop up and patrol 300' Mop up spots 100%									
<b>7. Special Instructions:</b>									
<b>8. Communications</b>									
Name	Ch	Function	Rx Freq	Rx Tone	Tx Freq	Tx Tone	Notes		
C11 T15	1	COMMAND	151.1675	103.5 (T8)	159.3975	162.2 (T15)	Roop Mtn covers NE side of Branch V		
C11 T14	2	COMMAND	151.1675	103.5 (T8)	159.3975	151.4 (T14)	Shaffer Mtn covers SW side of Branch V		
CO FIRE	3	COMMAND	154.4450	0.0	154.0100	110.9 (T1)	Tone 1, Shaffer Mtn; Available for Susanville Support / Water Supply Group		
VFIRE 25	11	TACTICAL	154.2875	156.7 (T6)	154.2875	156.7 (T6)	May also be used by Susanville		
CDF T23	14	AIR TO GROUND	159.4500	192.8 (T16)	159.4500	192.8 (T16)			
CALCORD	15	MEDICAL	156.0750	156.7 (T6)	156.0750	156.7 (T6)			
GUARD	16	EMERGENCY	168.6250	0.0	168.6250	110.9 (T1)	EMERGENCY USE ONLY		
<b>9. Prepared by: Name:</b>		T. BYRD			RESL		Signature:		
<b>ICS 204</b>		Date/Time: 7/23/2020		2200		Personnel Count: 180			

NIMS IAP

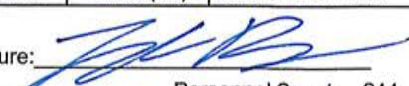
CONTROLLED UNCLASSIFIED INFORMATION//BASIC





# ASSIGNMENT LIST (ICS 204 WF)

CONTROLLED UNCLASSIFIED  
INFORMATION/BASIC

<b>1. Incident Name:</b> <p style="text-align: center; font-size: 1.2em;">Hog</p>		<b>2. Operational Period:</b> Date From: 07/24/20    Date To: 07/25/20 Time From: 0700    Time To: 0700				<b>3. Branch</b> <p style="text-align: center; font-size: 1.5em;">IX</p>		<b>Division</b> <p style="text-align: center; font-size: 1.5em;">Q</p>	
<b>4. Operations Personnel:</b>						Page 1 of 2		Quebec	
Operations Section Chief: <b>S. NORMAN</b>				Night Ops: <b>J. OHS</b>					
Branch Director: <b>J. PIERCE / J. GAHAGAN (T)</b>				Branch Safety: <b>J. WILLIAMS / L. PALMER (T)</b>					
Division/Group Supervisor: <b>J. REYES / J. BAKER (T)</b>				Air Attack: <b>S. MCGREGOR</b>					
<b>5. Resources Assigned:</b>		<b>** Resources Below in Bold are 12 Hour **</b>							
Resource Identifier	ALS	LWD	Leader	Personnel	Request #	Hours	Reporting Location		
STC LMU 9221C						0700-0700	DP 90		
STC MRN 9150C			T. NUNES	19	E-77	0700-0700	DP 90		
STC XBU 3000C			M. WATNER	18	E-384	0700-0700	DP 90		
STC XED 4077C			A. MORENO	21	E-86	0700-0700	DP 90		
STC XPL 4127C			M. LAUCHER	19	E-84	0700-0700	DP 90		
STC XTB 4000C			K. JAKUBOS	19	E-390	0700-0700	DP 90		
STG AEU 9275G			M. BOYCE		C-26	0700-0700	DP 90		
CRW LMU CREW 1			C. SIMMS	11	C-1	0700-0700	DP 90		
CRW LMU DEVIL 1			N. STETSER	14	C-99	0700-0700	DP 90		
<b>CRW MENDOCINO IHC</b>			<b>E. CECCON</b>	20	<b>C-14</b>	<b>0700-1900</b>	<b>DP 90</b>		
<b>CRW T2 C-32</b>			<b>J. LOPEZ</b>	20	<b>C-32</b>	<b>0700-1900</b>	<b>DP 90</b>		
<b>CRW T2 C-59</b>			<b>T. BIRRUTIA</b>	20	<b>C-59</b>	<b>0700-1900</b>	<b>DP 90</b>		
<b>CRW PVT C-68</b>			<b>K. OROZSCO</b>	20	<b>C-68</b>	<b>0700-1900</b>	<b>DP 90</b>		
<b>CRW T2 C-88</b>			<b>T. PORTER</b>	20	<b>C-88</b>	<b>0700-1900</b>	<b>DP 90</b>		
<b>CRW T2 C-90</b>			<b>E. LORD</b>	1	<b>C-90</b>	<b>0700-1900</b>	<b>DP 90</b>		
<b>CRW T2 C-91</b>			<b>J. IBARRA</b>	20	<b>C-91</b>	<b>0700-1900</b>	<b>DP 90</b>		
DOZ PVT E-95			P. TARBUSH	1	E-95	0700-0700	DP 90		
DOZ PVT E-97			Z. STEVENSON	1	E-97	0700-0700	DP 90		
<b>6. Work Assignments:</b> Improve line Mop up and patrol 300' Mop up spots 100%									
<b>7. Special Instructions:</b>									
<b>8. Communications</b>									
Name	Ch	Function	Rx Freq	Rx Tone	Tx Freq	Tx Tone	Notes		
C11 T15	1	COMMAND	151.1675	103.5 (T8)	159.3975	162.2 (T15)	Roop Mtn covers NE side of Branch V		
C11 T14	2	COMMAND	151.1675	103.5 (T8)	159.3975	151.4 (T14)	Shaffer Mtn covers SW side of Branch V		
CO FIRE	3	COMMAND	154.4450	0.0	154.0100	110.9 (T1)	Tone 1, Shaffer Mtn; Available for Susanville Support / Water Supply Group		
VFIRE 26	12	TACTICAL	154.3025	156.7 (T6)	154.3025	156.7 (T6)			
CDF T23	14	AIR TO GROUND	159.4500	192.8 (T16)	159.4500	192.8 (T16)			
CALCORD	15	MEDICAL	156.0750	156.7 (T6)	156.0750	156.7 (T6)			
GUARD	16	EMERGENCY	168.6250	0.0	168.6250	110.9 (T1)	EMERGENCY USE ONLY		
<b>9. Prepared by: Name:</b> T. BYRD			RESL			Signature: 			
<b>ICS 204</b>		Date/Time: 7/23/2020		2200		Personnel Count: 244			

NIMS IAP

CONTROLLED UNCLASSIFIED INFORMATION/BASIC





# ASSIGNMENT LIST (ICS 204 WF)

CONTROLLED UNCLASSIFIED  
INFORMATION/BASIC

<b>1. Incident Name:</b> <p style="text-align: center; font-size: 1.2em;">Hog</p>	<b>2. Operational Period:</b> Date From: 07/24/20    Date To: 07/25/20 Time From: 0700    Time To: 0700	<b>3. Branch</b> <p style="text-align: center; font-size: 1.5em;">IX</p>	<b>Division</b> <p style="text-align: center; font-size: 1.5em;">R</p>
<b>4. Operations Personnel:</b>		Page 1 of 1	Romeo

Operations Section Chief: <b>S. NORMAN</b>	Night Ops: <b>J. OHS</b>
Branch Director: <b>J. PIERCE / J. GAHAGAN (T)</b>	Branch Safety: <b>J. WILLIAMS / L. PALMER (T)</b>
Division/Group Supervisor: <b>G. ENGEN / B. WRIGHT (T)</b>	Air Attack: <b>S. MCGREGOR</b>

5. Resources Assigned:		** Resources Below in Bold are 12 Hour **					
Resource Identifier	ALS	LWD	Leader	Personnel	Request #	Hours	Reporting Location
STC CZU 9170C			C. JACOBSEN	16	E-64	0700-0700	DP 90
STC BTU 9211C			J. MORRIS	19	E-6	0700-0700	DP 90
<b>CRW T2 C-38</b>			<b>J. FOWARD</b>	<b>20</b>	<b>C-38</b>	<b>0700-1900</b>	<b>DP 90</b>
<b>CRW T2 C-75</b>			<b>H. ROCHA</b>	<b>20</b>	<b>C-75</b>	<b>0700-1900</b>	<b>DP 90</b>
<b>CRW T2 C-78</b>			<b>L. RASCH</b>	<b>20</b>	<b>C-78</b>	<b>0700-1900</b>	<b>DP 90</b>
<b>CRW T2 C-81</b>			<b>J. PARRAS</b>	<b>20</b>	<b>C-81</b>	<b>0700-1900</b>	<b>DP 90</b>
<b>CRW T2 C-82</b>			<b>R. HERNANDEZ</b>	<b>20</b>	<b>C-82</b>	<b>0700-1900</b>	<b>DP 90</b>
<b>CRW T2 C-96</b>			<b>O. MIRANDA</b>	<b>20</b>	<b>C-96</b>	<b>0700-1900</b>	<b>DP 90</b>
DOZ LMU 2244			J. WALTON	1	E-207	0700-0700	DP 90
DOZ AEU 2744			M. FISCHER	4	E-87	0700-0700	DP 90
DOZ PVT E-98			T. STEVENSON	1	E-98	0700-0700	DP 90
WT PVT E-43			A. RICH	2	E-43	0700-0700	DP 90
WT PVT E-58					E-58	0700-0700	DP 90
WT PVT E-167				2	E-167	0700-0700	DP 90
FEMP ENDERLIN			J. ENDERLIN	1	O-232	0700-0700	DP 90
FEMT RAMSEY			M. RAMSEY	1	O-225	0700-0700	DP 90

**6. Work Assignments:**  
 Improve line  
 Mop up and patrol 300'  
 Mop up spots 100%

**7. Special Instructions:**

8. Communications							
Name	Ch	Function	Rx Freq	Rx Tone	Tx Freq	Tx Tone	Notes
C11 T15	1	COMMAND	151.1675	103.5 (T8)	159.3975	162.2 (T15)	Roop Mtn covers NE side of Branch V
C11 T14	2	COMMAND	151.1675	103.5 (T8)	159.3975	151.4 (T14)	Shaffer Mtn covers SW side of Branch V
CO FIRE	3	COMMAND	154.4450	0.0	154.0100	110.9 (T1)	Tone 1, Shaffer Mtn; Available for Susanville Support / Water Supply Group
VFIRE 26	12	TACTICAL	154.3025	156.7 (T6)	154.3025	156.7 (T6)	
CDF T23	14	AIR TO GROUND	159.4500	192.8 (T16)	159.4500	192.8 (T16)	
CALCORD	15	MEDICAL	156.0750	156.7 (T6)	156.0750	156.7 (T6)	
GUARD	16	EMERGENCY	168.6250	0.0	168.6250	110.9 (T1)	EMERGENCY USE ONLY

<b>9. Prepared by: Name:</b> T. BYRD	RESL	Signature:	
ICS 204	Date/Time: 7/23/2020 2200	Personnel Count: 167	























CAL FIRE INCIDENT  
MANAGEMENT TEAM 3



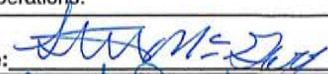
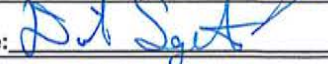
---

**RADIO BRIEFING  
WILL BE BROADCAST ON  
VTAC 14**

---

*In readiness is all*

## MEDICAL PLAN (ICS 206)

<b>1. Incident Name:</b> <p style="text-align: center;">Hog</p>		<b>2. Operational Period:</b> Date From: 7/24/20 Date To: 7/25/20 Time From: 0700 Time To: 0700					
<b>3. Medical Aid Stations:</b>							
Name	Location	Contact Number/Freq	Paramedics				
CAL MAT	ICP	916-247-1940/ Hog Coms	Yes				
<b>4. Transportation (indicate air or ground):</b>							
Ambulance Service	Location	Contact Number	Level of Service				
Plumas 12 (ground)	DP 91	530-257-1803/ Hog Coms	ALS				
Mountain Medics 1 (ground)	DP 50	530-276-4810/ Hog Coms	ALS				
SEMSA Air 1 (air)	Susanville Airport	866-297-1352/ Hog Coms	ALS				
SEMSA Air 2 (air)	Adin School	866-297-1352/ Hog Coms	ALS				
<b>5. Hospitals:</b>							
Hospital Name	Address,	Contact Number(s)/ Frequency	Travel Time		Trauma Center	Burn Center	Helipad
	Lat & Long		Air	Ground			
Banner Lassen Hospital	1800 Spring Ridge Dr Susanville, CA 96130 Lat/Long N 40' 26.27, W 120' 37.67	(530) 252-2096	5 min	10 min	Level 3	<input type="checkbox"/>	<input checked="" type="checkbox"/>
Dignity Health Mercy Medical Center Redding	2175 Rosaline Ave Redding, CA 96001 Lat/Long: N 40' 34.33, W 122' 23.80	(530) 225-7201	39 min	2 hr	Level 2	<input type="checkbox"/>	<input checked="" type="checkbox"/>
UC Davis Medical Center	2315 Stockton Blvd Sacramento, CA 95817 Lat/Long N 38' 33.28, W 121' 27.35	(916) 734-5669	1hr	3 hr	Level 1	<input checked="" type="checkbox"/>	<input checked="" type="checkbox"/>
Renown Regional Medical Center	1155 Mill Street Reno, NV 89502 Lat/Long: N 39' 31.52, W 119' 47.74	(775) 982-4100	32 min	2 hr	Level 2	<input type="checkbox"/>	<input checked="" type="checkbox"/>
<b>6. Special Medical Emergency Procedures</b>							
<b>Line Emergency</b> Crew Supervisor will contact Division Supervisor with patient complaint/condition and location. - Division Group Supervisor Contacts: 1. Closest EMS resource 2. Communications Unit - Communications Unit Contacts: 1. Ground or Air ambulance as requested. 2. Operations 3. Safety 4. Medical Unit - Division Supervisor or designee will serve as point of contact and run medical emergency on assigned channel. 1. A pre-assigned tactical frequency (i.e. CALCORD) should be used for IWI and only for duration of the emergency. - Communications Unit will clear the Command channel for emergency traffic as needed for duration of the need.				<b>Injury Reporting Procedures</b>  Nature of Injury: _____ Location of Patient: _____ Point of Contact: _____ Transportation Requested by: Air _____ Ground _____ Point of Pick-Up: _____ Lat: _____ Long: _____ Patient Unit ID: _____ Is an EMT with Patient: Yes _____ No _____ Age: _____ Sex: Male _____ Female _____			
<b>Camp Emergency</b> Contact Medical Unit with patient complaint/condition and location. Medical staff will respond to stabilize the patient. - Medical Unit contacts 1. Communications 2. Safety 3. Logistics 4. Operations 5. Crew Supervisor 6. Comp/Claims				<b>All Emergencies - Secure the area and identified witnesses for later investigation. Keep accurate log of events.</b>			
<input type="checkbox"/> Check box if aviation assets are utilized for rescue. If assets are used, coordinate with Air Operations.							
<b>7. Prepared by (Medical Unit Leader):</b>				<b>Signature:</b>			
S. McGary							
<b>8. Approved by (Safety Officer):</b>				<b>Signature:</b>			
D. SARGENTI / D. BROCKMAN (T)							
ICS 206		NIMS IAP		Date/Time: 7/23/20 2000			





## CAL FIRE INCIDENT MANAGEMENT TEAM 3



---

# TRAINING SPECIALIST MESSAGE

### TRAINEES:

Please register with the TNSP as soon as possible in order to receive documented credit for your training assignment. Training is located in the trailer adjacent to check-in.

### TRAINERS/EVALUATORS:

The narrative in the ICS 225 (Performance Evaluation) should reflect the tasks performed by the trainee on the incident. Be as descriptive as possible.

Bring the following with you to register:

- Incident Qualification Card
- Initiated Position Task Book
- Trainee Registration Form

Justin Voyson TNSP 661-547-8629

# INCIDENT TRAINEE REGISTRATION FORM

HOG INCIDENT CA-LMU-003874 JUSTIN VOYSON TNSP 661-547-8629

Complete ALL fields and return to Training Specialist or DROP BOX for entry into database.

Remember to close out training packets with the Training Specialist before DEMOB.

## TRAINEE's DATA

Name (PRINT): \_\_\_\_\_ ICS Trainee Position: \_\_\_\_\_

Request # (A,C,E,or O): \_\_\_\_\_ Agency Designator (Ex. CA-LMU): \_\_\_\_\_

USFS\_\_\_ State\_\_\_ BLM\_\_\_ BIA\_\_\_ NPS\_\_\_ FWS\_\_\_ Local Govt. \_\_\_ DOD\_\_\_ NWS\_\_\_

(CAL FIRE ONLY) Were You Assigned From a Priority Trainee Roster? Yes No

Ordered as a Trainee? Yes No

Date Assigned: \_\_\_\_\_ Cell Phone: \_\_\_\_\_

## Your Qualifications Coordinator: (Chief, Training Officer, etc.)

Name: \_\_\_\_\_

Name of Home Unit: \_\_\_\_\_

Address: \_\_\_\_\_

City: \_\_\_\_\_ State: \_\_\_\_\_ Zip Code: \_\_\_\_\_ Phone: \_\_\_\_\_

Training Officer's Email Address \_\_\_\_\_

## TRAINEE PREREQUISITES

1. Valid Red Card or agency certification card? \_\_\_\_\_ Yes \_\_\_\_\_ No

2. Trainee has current position task book issued by home unit? \_\_\_\_\_ Yes \_\_\_\_\_ No

Current Task Book Progress: (Circle) 0% 25% 50% 75% 90%

Priority Open Tasks in Your Position Task Book

1) \_\_\_\_\_

2) \_\_\_\_\_

## YOUR TRAINER/EVALUATOR's DATA

Trainer/Evaluator Name: \_\_\_\_\_ ICS position on Incident \_\_\_\_\_

Home Unit: \_\_\_\_\_ Agency Designator (ex. CA-LMU): \_\_\_\_\_

Work Address: \_\_\_\_\_ City: \_\_\_\_\_

State: \_\_\_\_\_ Zip Code: \_\_\_\_\_ Cell Phone: \_\_\_\_\_



# INCIDENT MANAGEMENT TEAM 3



## DEMOBILIZATION MESSAGE Hog Incident CA-LMU-003874

We appreciate your efforts during this incident and want to make sure that we get you to your next destination safely and efficiently. When we begin demobilization, a Tentative Demobilization List will be posted in several places around base camp, including the briefing area and the eating area. If you are on this list, please adhere to the following:

### SHOW UP AT THE DESIGNATED TIME

- Show up at the designated time.
- Do not show up early.
- Do not show up late.

A demobilization schedule has been prepared in careful coordination with all essential demobilization functions. Not following the demobilization schedule can have significant negative impacts on the Demobilization Unit staff and all other resources scheduled for demobilization. We do not want you or any other resources to have unnecessary delays. Please adhere to your scheduled demobilization time.

### BE PREPARED FOR A RE-ASSIGNMENT

There may be other incidents in the state that are in need of resources. There is a possibility that some of the resources released from this incident will be immediately assigned to another one. Please make sure you are properly supplied, rested, and nourished while waiting for your designated demobilization time.

### BE THOROUGH AND EFFICIENT

Demobilization begins and ends at the Demobilization Unit. Please follow the instructions given to you when starting the demobilization process. Returning to the Demobilization Unit with a complete and accurate Demobilization Check-Out (ICS-221) form will help prevent any unnecessary delays and ensure you are shown as available for future assignments. Unforeseen delays can occur during the demobilization process, such as mechanical issues discovered while at Ground Support. Plan to visit the Time Unit towards the end of the demobilization process in order to provide an accurate accounting of your time.





# PUBLIC INFORMATION SECTION



Incident Information Line: (530) 282-5714  
Incident Media Line: (530) 282-5714

Incident Updates:  
[www.fire.ca.gov/current\\_incidents](http://www.fire.ca.gov/current_incidents)

STATUS	
Incident Start Date: 7/18/2020	Incident Start Time: 3:30 PM
Cause: Under Investigation	Acres:
Containment:	Total Personnel:

**MEDIA** – The California State Penal Code Section 409.5(d) allows the news media to enter scenes of disaster, riot or civil disturbance. Properly identified members of the news media should not be restricted from entering locations specified within the code. However, this does not include crime scenes, private property and does not imply that the news media may interfere with incident operations while they are in the areas of concern. More information can be found [here](#).

**CAL FIRE SOCIAL MEDIA POLICY** – When assigned to a CAL FIRE incident, you will adhere to the CAL FIRE Social Media Policy, Section 0691. You can find further information about the CAL FIRE Social Media Policy [here](#).

**PHOTOGRAPHS AND VIDEOS OF INCIDENT** – We are in a new era of media. Media no longer means news/broadcast industry, but now refers to anyone that has the capability to shoot video, photographs and post them onto social media sites in a matter of minutes. Unfortunately, we have seen some instances of photographs or videos that have depicted unsafe, unprofessional or embarrassing circumstances which are a serious breach of ethics. When this happens, it reflects poorly on all that are attached to this incident. Posting an inappropriate video, photo or blog comment could expose oneself to unwanted ramifications. It may be unsafe to shoot photos or video and a firefighter who is concentrating on a camera loses their situational awareness.

The Public Information Office would like copies of the video and pictures that you safely took while not in an emergency situation, fire suppression activity or in an overhead assignment. Bring your video and pictures to the Public Information trailer; they will be reviewed and possibly uploaded to our many CAL FIRE social media sites. Remember, we don't want photographs or videos that depict unsafe, unprofessional or embarrassing circumstances, which are a serious breach of ethics.

**LOST AND FOUND** – The Information Section will manage lost and found items for the incident. If you have lost an item please leave your contact information and what you have lost at the Information Section. If you have found an item on the incident, bring the item to the Information Section with your contact information as well. All items left in Lost and Found will be turned over to the local CAL FIRE Shasta Unit.

**MAIL SERVICE** – The Information Section can assist you with sending and receiving mail.



# FINANCE SECTION MESSAGE



**CAL FIRE staff; please ensure you start your eFC-33s with the Personnel Time Recorder.**

**Please make sure hired equipment shift tickets are completed for all private vendors and dropped off in the Time Unit by agency personnel / line supervisors only, as well as EERAs.**

**Please report all injuries and suppression damage to the Comp / Claims Unit, no matter how minor.**

**The Finance Section is located in the grass area across from briefing.**

**Federal and Contract resources need to check-in with the Federal Time Unit.**

**OES is located in the back of fairgrounds.**

**ROGER RAINES, FSC1  
TERRY EASTWOOD, DEP. FSC1**

# Shift Ticket Example

EMERGENCY SHIFT TICKET and EVALUATION FORM					Contractor Name		
The responsible Government Officer will complete this form each shift					Fireline Builders		
Incident or Project Name <b>HOG</b>		Incident Number <b>CA-LMU-003874</b>	Request Number <b>E # Here</b>		Operator #1 <b>Bob Smith</b>	Operator #2 <b>Jeff Smith</b>	
Agreement Number <b>Obtain from vendor's agreement</b>					Operator Furnished By: <input checked="" type="checkbox"/> Contractor <input type="checkbox"/> Government		
Equipment Make <b>CAT</b>		Equipment Model / Type <b>D6N, Type II E</b>				Operating Supplies Furnished By: <input checked="" type="checkbox"/> Contractor <input type="checkbox"/> Government	
Serial Number <b>6LN3344</b>		Licence Number				Equipment Status <input checked="" type="checkbox"/> Inspected <input checked="" type="checkbox"/> Under Agreement	
Equipment Use (Circle) Hours / Days / Miles					Released by Government		
Date Mo / Day	Start	Stop	Work	Assignment	Withdrawn by Contractor		
7/28	0700	2400	17	Division B	<b>NO DAMAGE / NO CLAIMS</b>		
7/28	0001	0700	7	Division B			
Vendor Rating Poor* Avg. Good Exc. N/A					Govt. Rep. Name and Position - PRINT <b>Mike Weber Div. A</b>		
Met Performance Expectations					Govt. Rep. Signature <i>Mike Weber</i>		
Equipment in Safe Working Condition					Contractor Signature <i>Bob Smith</i>		
Operator Skill Level					Date <b>07/20/20</b>		
Operates Safely					Time <b>0800</b>		
Operator's Cooperation Level					Date <b>07/20/20</b>		
Overall Performance					Time <b>0800</b>		
* NOTE: Any rating of POOR requires an explanation in Comment Section.					CALFIRE 297		
**Final evaluation or for more documentation, use an ICS Form 230 or equivalent.					(Rev 3-2011)		
Pink - Finance		Blue - Home Unit HE Coordinator		Yellow - Vendor		White - Govt Representative	

EMERGENCY SHIFT TICKET and EVALUATION FORM					Contractor Name		
The responsible Government Officer will complete this form each shift					Fireline Builders		
Incident or Project Name <b>Hog</b>		Incident Number <b>CA-LMU-003874</b>	Request Number <b>E # Here</b>		Operator #1 <b>Bob Smith</b>	Operator #2	
Agreement Number <b>Obtain from vendor's agreement</b>					Operator Furnished By: <input checked="" type="checkbox"/> Contractor <input type="checkbox"/> Government		
Equipment Make <b>CAT</b>		Equipment Model / Type <b>D6N, Type II E</b>				Operating Supplies Furnished By: <input checked="" type="checkbox"/> Contractor <input type="checkbox"/> Government	
Serial Number <b>6LN3344</b>		Licence Number				Equipment Status <input checked="" type="checkbox"/> Inspected <input checked="" type="checkbox"/> Under Agreement	
Equipment Use (Circle) Hours / Days / Miles					Released by Government		
Date Mo / Day	Start	Stop	Work	Assignment	Withdrawn by Contractor		
7/28	0001	0700	7	Off Shift	<b>NO DAMAGE / NO CLAIMS</b>		
7/28	0701	1900	12	Division B			
7/28	1901	2400	5	Off Shift			
Vendor Rating Poor* Avg. Good Exc. N/A					Govt. Rep. Name and Position - PRINT <b>Mike Weber Div. A</b>		
Met Performance Expectations					Govt. Rep. Signature <i>Mike Weber</i>		
Equipment in Safe Working Condition					Contractor Signature <i>Bob Smith</i>		
Operator Skill Level					Date <b>07/20/20</b>		
Operates Safely					Time <b>0600</b>		
Operator's Cooperation Level					Date <b>07/20/20</b>		
Overall Performance					Time <b>0600</b>		
* NOTE: Any rating of POOR requires an explanation in Comment Section.					CALFIRE 297		
**Final evaluation or for more documentation, use an ICS Form 230 or equivalent.					(Rev 3-2011)		
Pink - Finance		Blue - Home Unit HE Coordinator		Yellow - Vendor		White - Govt Representative	



## FIRING PLAN AND GO / NO GO CHECKLIST

### Test Firing Plan

The size and location of the test burn will be large enough and representative of the fuels of the proposed burn area.

### Communications:

A radio net announcement at the incident will be made prior to firing operations. This will be communicated on tactical and command nets and will identify general location of geographic area to be burned. Special frequencies may or may not be used.

Frequencies:

1. Firing Group Tactical
2. Air to Ground
3. Aerial ignition discreet frequencies:

### Slop-overs and Escapes:

If an escape/slop-over occurs notify the Division/Group Supervisor, who will take appropriate suppression actions. The Firing Group Supervisor will evaluate whether or not to continue firing and communicate such to the Division Group Supervisor. At all times, appropriate information will be transmitted through the chain of command to the Operations Section Chief.

### Perimeter Firing Sequence:

The perimeter firing will proceed as follows:

#### Conditions:

Observed weather conditions: See IAP Weather Forecast  
Fire Behavior Burn Index: See IAP Fire Behavior Analysis

#### Sequence of Firing:

1. Ignition will begin at anchor point(s)
2.
3.
4.
5.

#### Aerial Ignition Plan (Section 8344.5 of the CAL FIRE 8300 manual):

1. Ignition will begin at anchor point(s)
2.
3.
4.
5.

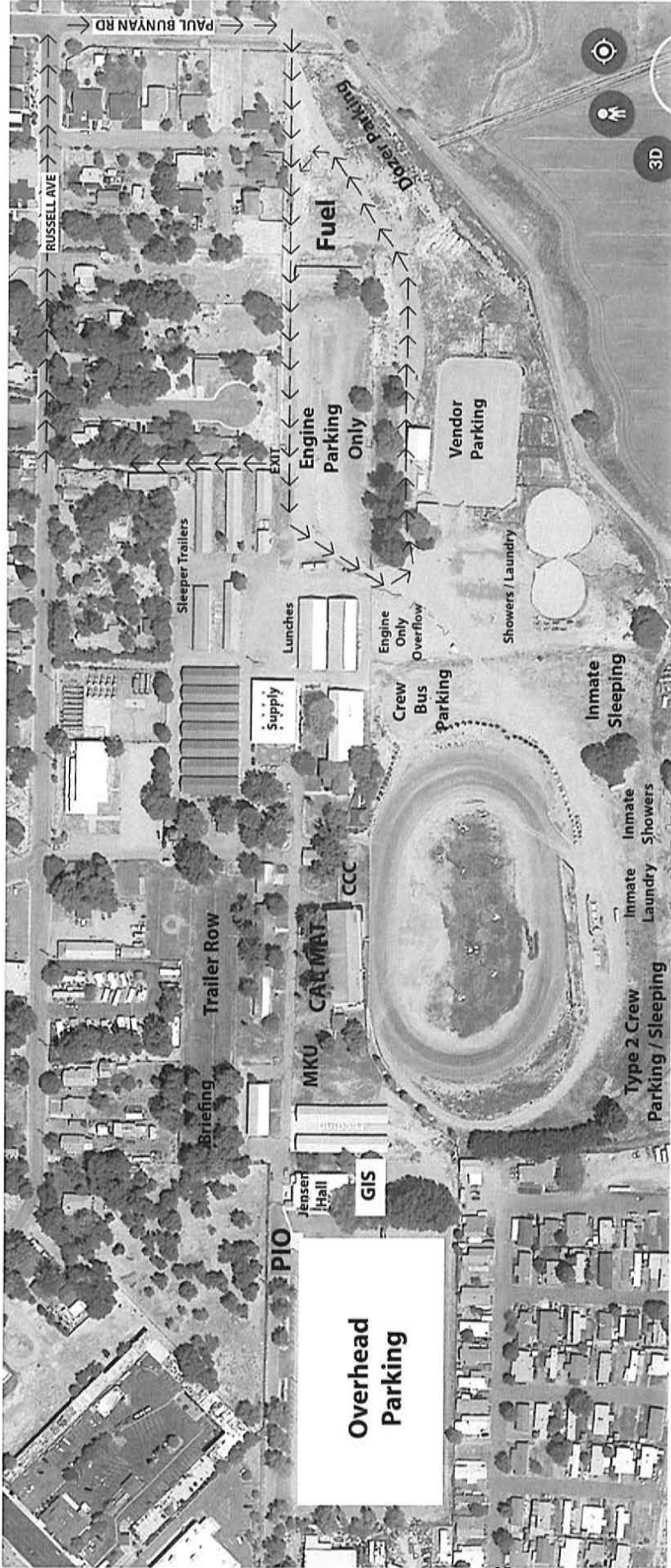
## GO / NO-GO

- All personnel briefed
- Weather forecast reviewed
- Resources in place
- Lookouts posted
- Communications systems in place
- Escape routes and safety zones established and made known
- Fire behavior forecast reviewed
- Test Fire is favorable

## APPROVALS and Initials

Firing Group Supervisor \_\_\_\_\_  
Division Supervisor \_\_\_\_\_  
Branch Director \_\_\_\_\_  
Air Operations Branch Director \_\_\_\_\_  
Operations Chief \_\_\_\_\_  
Safety Officer \_\_\_\_\_  
Incident Commander \_\_\_\_\_  
  
Prepared by: \_\_\_\_\_  
Agency/Unit: \_\_\_\_\_  
Date: \_\_\_\_\_

# Incident Base Map- Lassen County Fairgrounds



## Jensen Hall

- Situation
- Resources
- Plans
- Demob
- Check In

1. Federal Personnel Time
2. Time Unit/ Calfire Time
3. Time Section Chief/ Equipment Time
4. Incinet
5. Hotels/ Accommodations
6. Facilities/ Logistics/ Ordering
7. Finance Section Chief/ Comp Claims
8. Safety/ Operations
9. Incident Commander
10. Law Enforcement Liaison

Trailer Row

9

8

10

7

6

1

2

3

4

5

Briefing



GROUND SUPPORT  
LMU Headquarters, 697 CA-36, Susanville, CA 96130



For after-hours mechanical needs, call 925-532-5437.

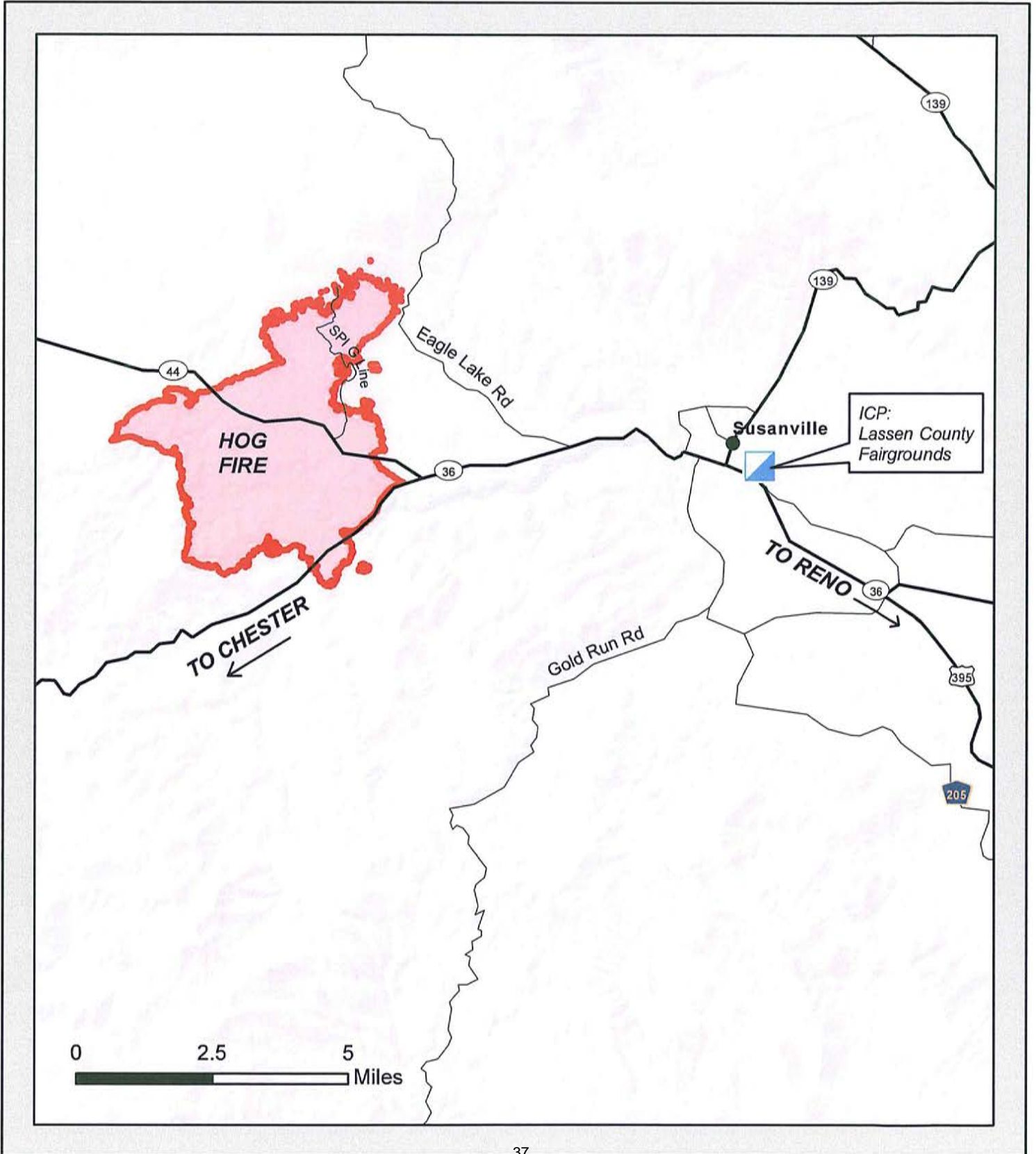




# Travel Map

## HOG INCIDENT

CA-LMU-003874



THIS PAGE INTENTIONALLY BLANK





