

# INCIDENT ACTION PLAN

## HOG INCIDENT

CA-LMU-003874

*\* CORRECTED \**

Monday



### OPERATIONAL PERIOD

7/27/2020 0700  
to  
7/28/2020 0700




*SD  
0836*





## ORGANIZATION ASSIGNMENT LIST (ICS 203)

<b>1. Incident Name:</b> Hog		<b>2. Operational Period: Date From:</b> Time From:		7/27/2020 0700	<b>Date To:</b> Time To:	7/28/2020 0700
<b>3. Incident Commander(s) and Command Staff:</b>			<b>7. Operation Section:</b>			
IC/UC's	B. SEE		Operations	S. NORMAN		
Deputy	B. FARIAS / K. BOHALL (T) / G. BELYEA (T)		Deputy Operations	M. BRUNTON		
Safety Officer	D. SARGENTI / D. BROCKMAN (T)		Night Ops	J. OHS		
Information Officer	D. OLSON / B. MERCADO (T)		Staging Area			
Liaison Officer	M. SMITH / J. DAPPER (T) / M. WELLS (CHP)		Branch	J	I. THORNTON / J. HEGGIE	
<b>4. Agency/Organization Representatives:</b>			Division/Group	A	K. MANCEBO	
Agency/Organization	Name		Division/Group	C	Z. HOLLISTER	
CALFIRE LMU Line Officer	L. CALDWELL		Division/Group	D / E	K. TAGLIO / D. JONES	
USFS Agency Rep	P. MARTENS		Division/Group			
USFS Agency Admin	B. DRAKE		Division/Group			
Cal OES	K. BAILEY		Branch	V	C. COSTA	
BLM Admin	E. RYAN		Division/Group	F / G	J. READ	
CHP	LT. A. POYNER		Division/Group	J / L	J. HINKLE	
OES Mngr.	S. ROJAS		Division/Group			
LCSO Agency Rep	M. CARNEY		Division/Group			
CDCR	T. MAINE		Division/Group			
CCC	C. HARRIS		Branch	IX	A. TURNER	
Oregon Dept. of Forestry	B. ARNSMEIER		Division/Group	O	S. LONG / A. WATKINS	
			Division/Group	Q	C. LYONS / B. PORRAZZO	
			Division/Group	R	S. GREND AHL	
			Branch	FSR	I. HOUSER (12 HR)	
			Division/Group			
<b>5. Planning Section:</b>			Branch	NORTH CONTINGENCY	G. SCHALL (12 HR)	
Chief	B. BLOXHAM		Division/Group	NORTH CONTINGENCY		
Deputy	S. DEBENEDET / G. GARCIA		Division/Group			
Resource Unit	L. PLATA / T. BYRD / J. HEALD (T)		Division/Group			
Situation Unit	T. TUGGLE / M. THAU (T)		Branch	ICP Staging		
Documentation Unit	M. SCHAEFFER		Division/Group			
Demobilization Unit	E. CAMPBELL / A. HUBBS		Division/Group	Susanville Support	T. WILLIAMS	
GISS	S. STANISH		Division/Group	Water Supply	T. JOHNSON	
FBAN	S. VOLMER		Division/Group			
IMET	T. FUENTES		Division/Group			
Training Tech Spec	J. VOYSON		Air Operations Branch	Director:	M. STANFORD / S. HAWKINS (T)	
Crew Tech Spec	M. O'NEIL		Air Support Group Supervisor	C. WILSON		
<b>6. Logistics Section:</b>			Air Tactical Group Supervisor	S. MCGREGOR		
Chief	R. TOVAR		Helibase Manager	J. COLLINS		
Deputy	R. CLUFF					
Supply Unit	J. BECKMAN / J. PECKHAM (T)		<b>8. Finance/Administration Section:</b>			
Facilities Unit	R. HOSTETLER		Chief	R. RAINES		
Ground Support Unit	A. WHITLOCK		Deputy	T. EASTWOOD / P. AGUADA (T)		
Communications Unit	K. JOHNSON		Time Unit	J. OROZCO JR. / Fed Finance T. FORK		
Medical Unit	K. FORTNEY		Procurement Unit	K. SHAEFER		
Ordering Manager	J. SCHEID		Comp/Claims Unit	A. HESTERLY		
Hired Equip. Tech Spec	A. WHITLOCK		Cost Unit	D. SOLIS (T)		
Prepared By: Name:	G. GARCIA	Position/Title:	PSC	Signature: 		
ICS 203		Date/Time:	7/26/2020 2000			



# Hog Fire Forecast

FORECAST NO: 7  
 NAME OF FIRE: Hog  
 UNIT: CALFIRE Team 3  
 PREDICTION FOR: Monday Shift  
 SHIFT DATE: July 27, 2020  
 FORECAST ISSUED: 1900 PDT July 26, 2020

Incident Meteorologist (IMET): Tony Fuentes  
 Email: [Tony.Fuentes@noaa.gov](mailto:Tony.Fuentes@noaa.gov)  
 Cell: (240) 778-5300

## \*\*\* RED FLAG WARNING TODAY: STRONG OUTFLOWS AND LIGHTNING \*\*\*

Thunderstorm coverage will increase and transition to wetter storms through the afternoon. Strong outflow winds, hail, and heavy rain is possible. Conditions quickly dry out with gusty winds possible on Wednesday and Thursday.

### TODAY (MONDAY):

**WEATHER:** 35% chance of storms. Isolated dry thunderstorms in the morning becoming wetter with increased coverage by 1400. Heavy rain, hail, and strong outflows possible.  
**WINDS (EYE LEVEL):** SSE 3-6 mph becoming SSW 8-12 mph after 1400. Gusty and erratic outflows up to 50 mph near thunderstorms.  
**MAX TEMPERATURES:** 84-88°. 92° at ICP Camp.  
**MINIMUM HUMIDITY:** 19-24%  
**TRANSPORT WIND:** SSE 5-10 mph, shifting SSW and increasing to 15-25 mph after 1400.  
**HAINES:** 5 LAL: 3 Increasing to 4 in the afternoon.

### TONIGHT (MONDAY NIGHT):

**WEATHER:** 15% chance of storms through 2100, then decreasing clouds  
**MIN TEMPERATURES:** 55-60°F  
**MAX HUMIDITY:** 50-55%  
**WINDS (EYE LEVEL):** NW 3-7 mph.  
**HAINES:** 3 LAL: 3 in the early evening, decreasing to 1 overnight.

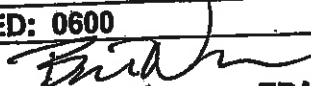
### TUESDAY:

**WEATHER:** Partly Cloudy.  
**WINDS (EYE LEVEL):** Upslope 3-6 mph becoming SW 7-13 mph gusts 17 mph.  
**MAX TEMPERATURES:** 83-88°. 92° at ICP Camp.  
**MINIMUM HUMIDITY:** 13-19%  
**TRANSPORT WIND:** SW 10-20 mph  
**HAINES:** 5 LAL: 1

### Extended Forecast Table:

	Wed Jul 29	Thu Jul 30	Fri Jul 31	Sat Aug 1
<b>Wx</b>	Dry/Gusty Winds	Dry/Gusty Winds	Dry/Breezy	Dry/Breezy
<b>Wind:</b>	SSW 13-17 mph Gusts 28 mph	SW 12-16 mph Gusts 25 mph	SW 10-14 mph Gusts 23 mph	SW 10-14 mph Gusts 20 mph
<b>Max Temp</b>	82-87°	82-86°	82-86°	84-88°
<b>Min RH</b>	10-15%	9-14%	10-15%	10-15%
<b>Min Temp</b>	52-57°	50-55°	49-54°	49-54°
<b>Max RH</b>	40-45%	38-43%	40-45%	40-45%
<b>Haines / LAL / CWR</b>	5 / 1 / 0%	4 / 1 / 0%	4 / 1 / 0%	5 / 1 / 0%

# FIRE BEHAVIOR FORECAST

FORECAST NUMBER: 7	TYPE OF FIRE: Wildfire
FIRE NAME: Hog	OPERATIONAL PERIOD: 7/27/20 - 7/28/20
DATE ISSUED: 7/27/2020	TIME ISSUED: 0600
UNIT: CA-LMU-3874	SIGNED:  Typed/printed: Brian Newman FBAN

## INPUTS

### WEATHER SUMMARY

**RED FLAG WARNING STARTING AT 0500 THROUGH 2100 FOR THUNDERSTORMS, OUTFLOW WINDS AND DRY LIGHTNING POTENTIAL**  
Shifting winds are forecasted throughout the day  
See IMET forecast for specific details

## OUTPUTS

### FIRE BEHAVIOR

#### GENERAL:

- The fire is burning in heavy timber and slash intermixed with bitterbrush and Manzanita, along with clear cut plots littered with moderate to heavy slash.
- Fuel moistures in the bitterbrush are nearing record levels, and timber fuel moistures are very low due to drought conditions in the area. Fuel moistures in Manzanita are much higher, slowing fire spread
- Scorched and fire dried brush can carry fire when pushed by forecasted winds

Timber and slash: Rate of spread 4-8 ft/min // Flame length 2-4 feet // Spotting 500 feet // PIG 80%

Bitterbrush: Rate of spread 9-12 ft/min // Flame lengths 10-15 feet // Spotting ¼ mile // PIG 85%

Manzanita: Rate of spread 4-8 ft/min // Flame lengths 2-4 ft // Spotting 200-300 feet // PIG 65%

**Rates of spread can be much higher under thunderstorm outflows winds**

#### SPECIFIC:

Branch I: Fire behavior is minimal, with stump holes and smoldering heavies. Shifting winds throughout the day could cause smoldering heavies and unburned islands to become active; spotting potential is high in the Bitterbrush and grass in Division A.

Branch V: Fire behavior is minimal but there is activity within the interior islands, shifting winds may increase ember production. Wind should continue to blow smoke into the burn and away from control lines.

Branch IX: This Branch has the most activity as spots and unburned islands continue to be active. Shifting winds will be gusty over the upper portions of the Branch, blowing smoke over the lines. The timber understory and clear-cut plots contain heavy dead and down and have a higher probability to contain smoldering spot fires.

**AIR OPERATIONS:** Thunderstorm outflows may affect aircraft's ability to fly, don't base your plans on aircraft use.

Sunrise: 05:56    Sunset: 20:22

#### SAFETY

- Snags and stump holes are likely in timber areas.
- Mop up should be more extensive in areas that could generate windblown embers across the line.
- Fire weakened trees have a higher probability of falling with outflow winds forecasted



# CALFIRE INCIDENT MANAGEMENT TEAM 3



1. INCIDENT NAME: <b>Hog</b>		2. DATE PREPARED: July 26, 2020	3. TIME PREPARED: 1500
4. PREPARED BY: David Brockman SOF1(t)	5. LEADER NAME: David Sargenti SOF1	6. OPERATIONAL PERIOD: 7/27/2020 0700 TO 7/28/2020 0700	

# SAFETY MESSAGE

## Complacency

A feeling of quiet pleasure or security, often while unaware of some potential danger or defect.

- Take all COVID 19 precautions.
- Trees are weakened due to fire activity. Look Up, Down, and Around.
- Make sure everyone gets a briefing!
- Monitor your hydration/nutrition intake and keep adequate supplies of each.
- RED FLAG WARNING, be aware for changing weather conditions
- Drive defensively, watch your speed and use warning lights when needed.
- Watch for civilian traffic in the fire area.



6. INSTRUCTIONS AND ASSIGNMENTS NOT CLEAR


**Mop Up and Patrol Operations:**  
Maintain your Situational Awareness.  
Observe for changes in the weather.  
PPE shall be utilized during operations.  
Understand your assignment.  
Pace the crew for the entire day.

CALFIRE INCIDENT MANAGEMENT TEAM 3 SOF1 (T) David Brockman



# INCIDENT RISK ANALYSIS ICS 215A



BRANCH	HAZARDOUS ACTIONS/ CONDITIONS	MITIGATIONS/WARNINGS/REMEDIES
ALL	COVID 19	<ul style="list-style-type: none"> <li>Wear mask when in camp and around the public.</li> <li>Wash/sanitize hands often.</li> <li>Maintain social distancing when applicable.</li> <li>Complete daily COVID screening process.</li> </ul>
ALL	THUNDERSTORMS	<ul style="list-style-type: none"> <li>Review thunderstorm safety in IRPG pg. 21.</li> </ul>
ALL	DRIVING HAZARDS	<ul style="list-style-type: none"> <li>Watch your speeds.</li> <li>Watch for civilian traffic on the roadways.</li> <li>Drive defensively! Expect the unexpected.</li> <li>Be aware of debris in the roadways from rollout, suppression operations and fire damage to poles.</li> </ul>
ALL	WEATHER	<ul style="list-style-type: none"> <li><b>RED FLAG WARNING.</b></li> <li>Be aware of changing wind conditions.</li> <li>Watch for changing weather conditions.</li> </ul>
ALL	PERSONNEL SAFETY	<ul style="list-style-type: none"> <li>All personnel are responsible for their personal safety.</li> <li>Immediately report any suspicious activity.</li> <li>Be sure to wear all required PPE while on the fire line.</li> </ul>
ALL	POWER LINES	<ul style="list-style-type: none"> <li>Be cautious if you encounter any down lines.</li> <li>Make appropriate notifications if found.</li> </ul>
ALL	HYDRATION	<ul style="list-style-type: none"> <li>Drink water before, during and after each shift.</li> <li>Be alert for signs of heat stress in yourself and others.</li> </ul>
ALL	FIRE AND DROUGHT WEAKENED TREES/SNAG HAZARDS	<ul style="list-style-type: none"> <li>Follow Hazard Tree Safety Guidelines (IRPG p. 22).</li> <li>Many of the trees within the fire area and along roadways are stressed due to drought conditions and burn times.</li> </ul>
ALL	MOP UP	<ul style="list-style-type: none"> <li>Wear all appropriate PPE.</li> <li>Watch for stump holes.</li> <li>Do not get complacent.</li> </ul>
ALL	COMMUNICATIONS	<ul style="list-style-type: none"> <li>Check the communication plan for frequency assignments.</li> <li>Be clear and concise when talking on the radio.</li> <li>Use human repeaters as needed.</li> </ul>
ALL	BRIEFINGS	<ul style="list-style-type: none"> <li>Make sure everyone gets a briefing on the plan for the day.</li> <li>Document this on your ICS 214.</li> </ul>
ALL	LCES	<ul style="list-style-type: none"> <li>Ensure that LCES is being utilized.</li> </ul>
ALL	HELICOPTER AWARENESS	<ul style="list-style-type: none"> <li>Watch for rotor wash when working near helicopters.</li> <li>Understand that hazardous trees may react to helicopters overhead.</li> <li>Monitor assigned aircraft frequencies.</li> </ul>
ALL	HEAVY EQUIPMENT	<ul style="list-style-type: none"> <li>Watch out for heavy equipment traffic!</li> <li>Be aware of heavy equipment working in the area.</li> <li>Be watchful around heavy equipment, they may not see you.</li> </ul>
Incident Name:  <b>Hog</b>		Date Prepared: 7/26/2020 Prepared by: David Brockman  SOF1 (T)
		Operational Period: 7/27/2020-7/28/2020  0700-0700

*In readiness is all*





# CAL FIRE INCIDENT MANAGEMENT TEAM 3



## Fire and COVID-19 Briefing Checklist

### Self-Awareness / Screening

- Immediately separate yourself from others.
- Notify supervisor if you or others experience:
  - Cough, more than expected
  - Shortness of breath or difficulty breathing
  - New loss of taste or smell
  - Fever
  - Sore throat
  - Chills
  - Muscle pain
- Review and follow crew and division plans to isolate, triage, and transport symptomatic personnel.

### Hygiene on the Fireline

- Properly wash or sanitize your hands often, especially before and after eating or entering a public place, and after coughing or sneezing.
- Avoid handshakes and communal use items.
- Maintain a supply of hand sanitizer and hand wipes. Inform supervisor of needed resupply.
- Disinfect high touch surfaces often:
  - Radios, phones, doors, pumps, fuel cans, etc.

### Social Distancing and Protective Equipment

- Initiate, practice, and remind others of social distancing.
- Conduct briefings and conversations outdoors and at least 6 feet apart.
- Utilize face coverings as a tool when practical.
- Clean or replace dirty face coverings, equipment, and PPE.

### Communications

- Face coverings and social distancing complicate communications. Ensure effective sender/receiver messaging.

**Protect yourself, your crew, and your camp!**

Find more information: <https://www.nwccg.gov/coronavirus>.

NFES 002646 (06/2020)

*In readiness is all*

















# ASSIGNMENT LIST (ICS 204 WF)

CONTROLLED UNCLASSIFIED  
INFORMATION//BASIC

<b>1. Incident Name:</b> <p style="text-align: center; font-size: 1.2em;">Hog</p>	<b>2. Operational Period:</b> Date From: 07/27/20    Date To: 07/28/20 Time From: 0700    Time To: 0700	<b>3. Branch</b> <b>Division</b> <p style="text-align: center; font-size: 1.5em;">IX            Q</p> Page 1 of 2    Quebec
--	---	--

<b>4. Operations Personnel:</b>	
Operations Section Chief: <b>S. NORMAN</b>	Night Ops: <b>J. OHS</b>
Branch Director: <b>A. TURNER</b>	Branch Safety:
Division/Group Supervisor: <b>C. LYONS / B. PORRAZZO</b>	Air Attack: <b>S. MCGREGOR</b>

5. Resources Assigned:		** Resources Below in Bold are 12 Hour **					
Resource Identifier	ALS	LWD	Leader	Personnel	Request #	Hours	Reporting Location
STC XED 4077C			A. MORENO	21	E-86	0700-0700	DP 90
STC XBU 3000C			M. WATNER	18	E-384	0700-0700	DP 90
STC MDF S/T 3630C			D. PREWITT	28	E-45	0700-0700	DP 90
CRW HUU 2			<b>J. V. MARTINO DMI</b>	<b>18 11</b>	<b>C-2 C-8</b>	<b>0700-1900</b>	<b>DP 90 0700-1900</b>
CRW T2 C-36			A. HERGERT	20	C-36	0700-1900	DP 90
CRW T2 C-64			F. PEREZ	20	C-64	0700-1900	DP 90
CRW T2 C-65			A. TOMTHAK	20	C-65	0700-1900	DP 90
CRW T2 C-88			T. PORTER	20	C-88	0700-1900	DP 90
CRW T2 C-90			E. LORD	1	C-90	0700-1900	DP 90
CRW T2 C-96			O. MIRANDA	20	C-96	0700-1900	DP 90
DOZ PVT E-275			G. HAROLD	1	E-275	0700-0700	DP 90
DOZ PVT E-276			D. DIAL	2	E-276	0700-0700	DP 90
DOZ PVT E-277			B. FORKNER	2	E-277	0700-0700	DP 90
DOZ PVT E-279			S. MOORE	2	E-279	0700-0700	DP 90
WT PVT E-56			L. CARLSON	2	E-56	0700-0700	DP 90
WT PVT E-114			J. SHELTON	2	E-114	0700-0700	DP 90
WT PVT E-249			T. GARR	2	E-249	0700-0700	DP 90
WT PVT E-333			D. WEAVER	2	E-333	0700-0700	DP 90

**6. Work Assignments:**  
 Locate hot spots from IR.  
 Mop up 600' in from control line.  
 Backhaul hose.  
 Backhaul all trash.

**7. Special Instructions:**

8. Communications							
Name	Ch	Function	Rx Freq	Rx Tone	Tx Freq	Tx Tone	Notes
C11 T15	1	COMMAND	151.1675	103.5 (T8)	159.3975	162.2 (T15)	Roop Mtn covers NE side of Branch V
C11 T14	2	COMMAND	151.1675	103.5 (T8)	159.3975	151.4 (T14)	Shaffer Mtn covers SW side of Branch V
CO FIRE	3	COMMAND	154.4450	0.0	154.0100	110.9 (T1)	Tone 1, Shaffer Mtn; Available for Susanville Support / Water Supply Group
VFIRE 26	12	TACTICAL	154.3025	156.7 (T6)	154.3025	156.7 (T6)	
CDF T23	14	AIR TO GROUND	159.4500	192.8 (T16)	159.4500	192.8 (T16)	
CALCORD	15	MEDICAL	156.0750	156.7 (T6)	156.0750	156.7 (T6)	
GUARD	16	EMERGENCY	168.6250	0.0	168.6250	110.9 (T1)	EMERGENCY USE ONLY

<b>9. Prepared by: Name:</b> T. BYRD	RESL	Signature:	Personnel Count: 201
--------------------------------------	------	------------	----------------------

ICS 204  
NIMS IAP

Date/Time: 7/26/2020 2200

CONTROLLED UNCLASSIFIED INFORMATION//BASIC

# ASSIGNMENT LIST (ICS 204 WF)

CONTROLLED UNCLASSIFIED  
INFORMATION/BASIC

<b>1. Incident Name:</b> <p style="text-align: center;"><b>Hog</b></p>	<b>2. Operational Period:</b> Date From: <b>07/27/20</b> Date To: <b>07/28/20</b> Time From: <b>0700</b> Time To: <b>0700</b>	<b>3. Branch</b> <b>Division</b> <p style="text-align: center;"><b>IX</b>                                  <b>Q</b></p> Page 2 of 2                      Quebec
---	---	--

<b>4. Operations Personnel:</b>		
Operations Section Chief: <b>S. NORMAN</b>	Night Ops: <b>J. OHS</b>	
Branch Director: <b>A. TURNER</b>	Branch Safety: _____	
Division/Group Supervisor: <b>C. LYONS / B. PORRAZZO</b>	Air Attack: <b>S. MCGREGOR</b>	

<b>5. Resources Assigned:</b>		<b>** Resources Below in Bold are 12 Hour **</b>						
Resource Identifier	ALS	LWD	Leader	Personnel	Request #	Hours	Reporting Location	
WT PVT E-337			<b>C. SKINNER</b>	<b>1</b>	<b>E-337</b>	<b>0700-0700</b>	<b>DP 90</b>	
FALM O-380			<b>T. DAVANT</b>	<b>1</b>	<b>O-380</b>	<b>0700-1900</b>	<b>DP 90</b>	
FALM O-383			<b>K. SMITH</b>	<b>2</b>	<b>O-383</b>	<b>0700-1900</b>	<b>DP 90</b>	
FEMP HOWARD			<b>R. HOWARD</b>	<b>1</b>	<b>O-355</b>	<b>0700-0700</b>	<b>DP 90</b>	
FEMT ROTHROCK			<b>K. ROTHROCK</b>	<b>1</b>	<b>O-222</b>	<b>0700-0700</b>	<b>DP 90</b>	
SOFR BRUNELLI			<b>M. BRUNELLI</b>	<b>1</b>	<b>O-439</b>	<b>0700-0700</b>	<b>DP 90</b>	

**6. Work Assignments:**  
 Locate hot spots from IR.  
 Mop up 600' in from control line.  
 Backhaul hose.  
 Backhaul all trash.

**7. Special Instructions:**  
 \_\_\_\_\_  
 \_\_\_\_\_

<b>8. Communications</b>							
Name	Ch	Function	Rx Freq	Rx Tone	Tx Freq	Tx Tone	Notes
C11 T15	1	COMMAND	151.1675	103.5 (T8)	159.3975	162.2 (T15)	Roop Min covers NE side of Branch V
C11 T14	2	COMMAND	151.1675	103.5 (T8)	159.3975	151.4 (T14)	Shaffer Min covers SW side of Branch V
CO FIRE	3	COMMAND	154.4450	0.0	154.0100	110.9 (T1)	Tone 1, Shaffer Mtr; Available for Susanville Support / Water Supply Group
VFIRE 26	12	TACTICAL	154.3025	156.7 (T6)	154.3025	156.7 (T6)	
CDF T23	14	AIR TO GROUND	159.4500	192.8 (T16)	159.4500	192.8 (T16)	
CALCORD	15	MEDICAL	156.0750	156.7 (T6)	156.0750	156.7 (T6)	
GUARD	16	EMERGENCY	168.6250	0.0	168.6250	110.9 (T1)	EMERGENCY USE ONLY

<b>9. Prepared by: Name:</b> T. BYRD	RESL	Signature:
ICS 204	Date/Time: 7/26/2020 2200	Personnel Count: <b>7</b>

# ASSIGNMENT LIST (ICS 204 WF)

CONTROLLED UNCLASSIFIED  
INFORMATION/BASIC

<b>1. Incident Name:</b> Hog	<b>2. Operational Period:</b> Date From: 07/27/20 Date To: 07/28/20 Time From: 0700 Time To: 0700	<b>3. Branch</b> IX <b>Division</b> R
<b>4. Operations Personnel:</b> Operations Section Chief: S. NORMAN Branch Director: A. TURNER Division/Group Supervisor: S. GREND AHL		Page 1 of 1 Romeo

Night Ops: J. OHS	Branch Safety:
Air Attack: S. MCGREGOR	

**5. Resources Assigned:**      \*\* Resources Below in Bold are 12 Hour \*\*

Resource Identifier	ALS	LWD	Leader	Personnel	Request #	Hours	Reporting Location
STC XSN 2395C			D. WELCh	21	E-387	0700-0700	DP 90
CRW T2 C-38			J. FOWARD	20	C-38	0700-1900	DP 90
CRW T2 C-75			H. ROCHA	20	C-75	0700-1900	DP 90
CRW T2 C-78			L. RASCH	20	C-78	0700-1900	DP 90
CRW T2 C-81			J. PARRAS	20	C-81	0700-1900	DP 90
WT PVT E-58 <i>003/TBD</i>			M. HAMILTON	2	E-58	0700-0700	DP 90
WT PVT E-113			E. LEEMAN	2	E-113	0700-0700	DP 90
WT PVT E-167				2	E-167	0700-0700	DP 90
FEMP CARLSON			E. CARLSON	1	O-359	0700-0700	DP 90
FEMT BARLOW			C. BARLOW	1	O-363	0700-0700	DP 90

**6. Work Assignments:**  
 Locate hot spots from IR.  
 Mop up 600' from control line.  
 Backhaul hose.  
 Backhaul all trash.

**7. Special Instructions:**

**8. Communications**

Name	Ch	Function	Rx Freq	Rx Tone	Tx Freq	Tx Tone	Notes
C11 T15	1	COMMAND	151.1675	103.5 (T8)	159.3975	162.2 (T15)	Roop Mtn covers NE side of Branch V
C11 T14	2	COMMAND	151.1675	103.5 (T8)	159.3975	151.4 (T14)	Shaffer Mtn covers SW side of Branch V
CO FIRE	3	COMMAND	154.4450	0.0	154.0100	110.9 (T1)	Tone 1, Shaffer Mtn; Available for Susanville Support / Water Supply Group
VFIRE 26	12	TACTICAL	154.3025	156.7 (T6)	154.3025	156.7 (T6)	
CDF T23	14	AIR TO GROUND	159.4500	192.8 (T16)	159.4500	192.8 (T16)	
CALCORD	15	MEDICAL	156.0750	156.7 (T6)	156.0750	156.7 (T6)	
GUARD	16	EMERGENCY	168.6250	0.0	168.6250	110.9 (T1)	EMERGENCY USE ONLY

**9. Prepared by: Name:** T. BYRD      RESL  
 Signature:   
 Date/Time: 7/26/2020 2200      Personnel Count: 109

ICS 204  
NIMS IAP

CONTROLLED UNCLASSIFIED INFORMATION/BASIC

# ASSIGNMENT LIST (ICS 204 WF)

CONTROLLED UNCLASSIFIED  
INFORMATION//BASIC

<b>1. Incident Name:</b> <p style="text-align: center; font-size: 1.2em;">Hog</p>	<b>2. Operational Period:</b> Date From: 07/27/20    Date To: 07/28/20 Time From: 0700    Time To: 0700	<b>3. Branch</b> <b>Division</b> <p style="text-align: center;">NORTH CONTINGENCY    NORTH CONTINGENCY</p> Page 1 of 1
--	---	---

<b>4. Operations Personnel:</b>	
Operations Section Chief: <b>S. NORMAN</b>	Night Ops: <b>J. OHS</b>
Branch Director: <b>G. SCHALL (12 HR)</b>	Branch Safety:
Division/Group Supervisor:	Air Attack: <b>S. MCGREGOR</b>

5. Resources Assigned:		** Resources Below In Bold are 12 Hour **					
Resource Identifier	ALS	LWD	Leader	Personnel	Request #	Hours	Reporting Location
ENG T3						0700-1900	DP 3
DOZ PVT E-100 → FSR			<b>S. MAYWARD</b>	<b>2</b>	<b>E-100</b>	<b>0700-1900</b>	<b>DP 3 DPI</b>
DOZ PVT E-101 → FSR			<b>T. PARKS</b>	<b>1</b>	<b>E-101</b>	<b>0700-1900</b>	<b>DP 3 DPI</b>
DOZ PVT E-258			<b>S. LASSEN</b>	<b>2</b>	<b>E-258</b>	<b>0700-1900</b>	<b>DP 3</b>
DOZ PVT E-260 → FSR			<b>W. COCKRELL</b>	<b>4</b>	<b>E-260</b>	<b>0700-1900</b>	<b>DP 3 DPI</b>
MAST PVT E-312			<b>T. FUNES</b>	<b>1</b>	<b>E-312</b>	<b>0700-1900</b>	<b>DP 3</b>
MAST PVT E-313			<b>D. THEIS</b>	<b>1</b>	<b>E-313</b>	<b>0700-1900</b>	<b>DP 3</b>
MAST PVT E-371			<b>B. FORKNER</b>	<b>2</b>	<b>E-371</b>	<b>0700-1900</b>	<b>DP 3</b>
MAST PVT E-372			<b>R. OLSON</b>	<b>2</b>	<b>E-372</b>	<b>0700-1900</b>	<b>DP 3</b>
EXC						<b>0700-1900</b>	<b>DP 3</b>
EXC						<b>0700-1900</b>	<b>DP 3</b>
HEQB BRIDGER			<b>J. BRIDGER</b>	<b>1</b>	<b>O-217</b>	<b>0700-1900</b>	<b>DP 3</b>
HEQB HICKEY (T)			<b>T. HICKEY</b>	<b>1</b>	<b>O-56</b>	<b>0700-1900</b>	<b>DP 3</b>

**6. Work Assignments:**  
Complete mastication on Southern portion of contingency line.

**7. Special Instructions:**  
E-100, E-101 and E-260 continue working Northeast towards Devils Corral.

8. Communications							
Name	Ch	Function	Rx Freq	Rx Tone	Tx Freq	Tx Tone	Notes
C11 T15	1	COMMAND	151.1675	103.5 (T8)	159.3975	162.2 (T15)	Roop Min covers NE side of Branch V
C11 T14	2	COMMAND	151.1675	103.5 (T8)	159.3975	151.4 (T14)	Shaffer Min covers SW side of Branch V
CO FIRE	3	COMMAND	154.4450	0.0	154.0100	110.9 (T1)	Tone 1, Shaffer Mtn; Available for Susanville Support / Water Supply Group
CDF T29	4	TACTICAL	151.3475	192.8 (T16)	151.3475	192.8 (T16)	Fire Suppression Repair (FSR)
CDF T23	14	AIR TO GROUND	159.4500	192.8 (T16)	159.4500	192.8 (T16)	
CALCORD	15	MEDICAL	156.0750	156.7 (T6)	156.0750	156.7 (T6)	
GUARD	16	EMERGENCY	168.6250	0.0	168.6250	110.9 (T1)	EMERGENCY USE ONLY

<b>9. Prepared by: Name:</b> T. BYRD	RESL	Signature:	Personnel Count: 17
ICS 204	Date/Time: 7/26/2020 2200		

# ASSIGNMENT LIST (ICS 204 WF)

CONTROLLED UNCLASSIFIED  
INFORMATION/BASIC

<b>1. Incident Name:</b> <p style="text-align: center;">Hog</p>	<b>2. Operational Period:</b> Date From: 07/27/20    Date To: 07/28/20 Time From: 0700    Time To: 0700	<b>3. Branch</b> <b>Division</b> <p style="text-align: center;"><b>ICP</b> <b>Staging</b>    Water Supply</p> Page 1 of 1
--	---	--

<b>4. Operations Personnel:</b>	
Operations Section Chief: <b>S. NORMAN</b>	Night Ops: <b>J. OHS</b>
Branch Director:	Branch Safety:
Division/Group Supervisor:	Air Attack: <b>S. MCGREGOR</b>

5. Resources Assigned:		** Resources Below in Bold are 12 Hour **					
Resource Identifier	ALS	LWD	Leader	Personnel	Request #	Hours	Reporting Location
WT PVT E-43			<b>A. RICH</b>	<b>2</b>	<b>E-43</b>	<b>0700-0700</b>	<b>ICP</b>
WT PVT E-57			<b>R. RODGERS</b>	<b>2</b>	<b>E-57</b>	<b>0700-0700</b>	<b>ICP</b>
WT PVT E-108			<b>M. SISSON</b>	<b>2</b>	<b>E-108</b>	<b>0700-0700</b>	<b>ICP</b>
WT PVT E-252			<b>B. TORRES</b>	<b>2</b>	<b>E-252</b>	<b>0700-0700</b>	<b>ICP</b>
WT PVT E-253			<b>B. WOOTEN</b>	<b>2</b>	<b>E-253</b>	<b>0700-0700</b>	<b>ICP</b>
WT PVT E-254			<b>W. CLARES</b>	<b>1</b>	<b>E-254</b>	<b>0700-1900</b>	<b>ICP</b>
WT PVT E-340			<b>H. SPURLOCK</b>	<b>2</b>	<b>E-340</b>	<b>0700-0700</b>	<b>ICP</b>
WT PVT E-411			<b>B. LILLARD</b>	<b>2</b>	<b>E-411</b>	<b>0700-0700</b>	<b>ICP</b>

**6. Work Assignments:**  
Establish and develop water supply from natural sources for fire suppression within the fire perimeter.

**7. Special Instructions:**

8. Communications							
Name	Ch	Function	Rx Freq	Rx Tone	Tx Freq	Tx Tone	Notes
C11 T15	1	COMMAND	151.1675	103.5 (T8)	159.3975	162.2 (T15)	Floop Min covers NE side of Branch V
C11 T14	2	COMMAND	151.1675	103.5 (T8)	159.3975	151.4 (T14)	Shaffer Min covers SW side of Branch V
CO FIRE	3	COMMAND	154.4450	0.0	154.0100	110.9 (T1)	Tone 1, Shaffer Min; Available for Susanville Support/ Water Supply Group
VFIRE 26	12	TACTICAL	154.3025	156.7 (T6)	154.3025	156.7 (T6)	
CDF T23	14	AIR TO GROUND	159.4500	192.8 (T16)	159.4500	192.8 (T16)	
CALCORD	15	MEDICAL	156.0750	156.7 (T6)	156.0750	156.7 (T6)	
GUARD	16	EMERGENCY	168.6250	0.0	168.6250	110.9 (T1)	EMERGENCY USE ONLY

**9. Prepared by: Name:**      **T. BYRD**      **RESL**

Signature:

ICS 204      Date/Time: 7/26/2020 2200      Personnel Count: 15



# ASSIGNMENT LIST (ICS 204 WF)

CONTROLLED UNCLASSIFIED  
INFORMATION/BASIC

<b>1. Incident Name:</b> <p style="text-align: center; font-size: 1.2em;">Hog</p>	<b>2. Operational Period:</b> Date From: 07/27/20    Date To: 07/28/20 Time From: 0700    Time To: 0700	<b>3. Branch</b> <b>Division</b> <p style="text-align: center; font-size: 1.2em;">FSR</p>
--	---	--

<b>4. Operations Personnel:</b>	
Operations Section Chief: <b>S. NORMAN</b>	Night Ops: <b>J. OHS</b>
Branch Director: <b>I. HOUSER (12 HR)</b>	Branch Safety:
Division/Group Supervisor:	Air Attack: <b>S. MCGREGOR</b>

5. Resources Assigned:		** Resources Below in Bold are 12 Hour **					
Resource Identifier	ALS	LWD	Leader	Personnel	Request #	Hours	Reporting Location
CRW T2 C-61			<b>L. CERVANCEZ</b>	20	C-61	0700-1900	ICP
CRW T2 C-66			<b>C. OROZCO</b>	20	C-66	0700-1900	ICP
DOZ PVT E-31			<b>M. KIRACK</b>	1	E-31	0700-1900	ICP
DOZ PVT E-91			<b>T. OFERALL</b>	1	E-91	0700-1900	ICP
EXC PVT E-424			<b>R. KOEHLER</b>	2	E-424	0700-1900	ICP
EXC PVT E-430			<b>M. KIRACK</b>	2	E-430	0700-1900	ICP
EXC PVT E-444			<b>I. TOTTER</b>	2	E-444	0700-1900	ICP
CHIP PVT E-315			<b>M. BLAKMAN</b>	1	E-315	0700-1900	ICP
CHIP PVT E-425			<b>C. HAPTONSTALL</b>	2	E-425	0700-1900	ICP
CHIP PVT E-427			<b>H. FERGUSON</b>	2	E-427	0700-1900	ICP
CHIP PVT E-429			<b>J. FIKE</b>	2	E-429	0700-1900	ICP
HEQB KLOSEK			<b>J. KLOSEK</b>	1	O-334	0700-1900	ICP
HEQB ANKLAM (T)			<b>B. ANKLAM</b>	1	O-341	0700-1900	ICP
HEQB SILVA			<b>J. SILVA</b>	1	O-62	0700-1900	ICP
HEQB HENRY (T)			<b>J. HENRY</b>	1	O-497	0700-1900	ICP
HEQB DRUMMOND			<b>J. DRUMMOND</b>	1	O-55	0700-1900	ICP
HEQB LEONARD (T)			<b>K. LEONARD</b>	1	O-344	0700-1900	ICP
HEQB ROBINSON			<b>T. ROBINSON</b>	1	O-215	0700-1900	ICP

**6. Work Assignments:**  
Refer to READ on Lassen National Forest.  
Follow Fire Suppression Repair Plan.  
Coordinate with HEQB at end of shift.

**7. Special Instructions:**

8. Communications							
Name	Ch	Function	Rx Freq	Rx Tone	Tx Freq	Tx Tone	Notes
C11 T15	1	COMMAND	151.1675	103.5 (T8)	159.3975	162.2 (T15)	Ramp Min covers NE side of Branch V
C11 T14	2	COMMAND	151.1675	103.5 (T8)	159.3975	151.4 (T14)	Shaffer Min covers SW side of Branch V
CO FIRE	3	COMMAND	154.4450	0.0	154.0100	110.9 (T1)	Tone 1, Shaffer Min; Available for Susarville Support/Water Supply Group
CDF T29	4	TACTICAL	151.3475	192.8 (T16)	151.3475	192.8 (T16)	Fire Suppression Repair (FSR)
CDF T23	14	AIR TO GROUND	159.4500	192.8 (T16)	159.4500	192.8 (T16)	
CALCORD	15	MEDICAL	156.0750	156.7 (T6)	156.0750	156.7 (T6)	
GUARD	16	EMERGENCY	168.6250	0.0	168.6250	110.9 (T1)	EMERGENCY USE ONLY

<b>9. Prepared by: Name:</b> T. BYRD	RESL	<b>Signature:</b>
ICS 204	Date/Time: 7/26/2020 2200	Personnel Count: 60

NIMS IAP

CONTROLLED UNCLASSIFIED INFORMATION/BASIC

# ASSIGNMENT LIST (ICS 204 WF)

CONTROLLED UNCLASSIFIED  
INFORMATION/BASIC

<b>1. Incident Name:</b> <p style="text-align: center; font-size: 1.2em;"><b>Hog</b></p>	<b>2. Operational Period:</b> Date From: 07/27/20    Date To: 07/28/20 Time From: 0700    Time To: 0700	<b>3. Branch</b> <b>Division</b> <p style="text-align: center; font-size: 1.2em;"><b>FSR</b></p>
---	---	---

Page 2 of 2

<b>4. Operations Personnel:</b>	
Operations Section Chief: <b>S. NORMAN</b>	Night Ops: <b>J. OHS</b>
Branch Director: <b>I. HOUSER (12 HR)</b>	Branch Safety:
Division/Group Supervisor:	Air Attack: <b>S. MCGREGOR</b>

5. Resources Assigned:		** Resources Below in Bold are 12 Hour **					
Resource Identifier	ALS	LWD	Leader	Personnel	Request #	Hours	Reporting Location
HEQB FITZGERALD (T)			<b>T. FITZGERALD</b>	1	<b>O-63</b>	<b>0700-1900</b>	<b>ICP</b>
READ IMMEKER			<b>D. IMMEKER</b>	1	<b>O-15</b>	<b>0700-1900</b>	<b>ICP</b>
READ MARTIN			<b>J. MARTIN</b>	1	<b>O-16</b>	<b>0700-1900</b>	<b>ICP</b>
READ FARRIS			<b>P. FARRIS</b>	1	<b>O-33</b>	<b>0700-1900</b>	<b>ICP</b>
READ MERREFIELD			<b>J. MERREFIELD</b>	1	<b>O-490</b>	<b>0700-1900</b>	<b>ICP</b>
<i>EXC PVT E-445</i>			<i><b>J. BRITTEN</b></i>	<i>2</i>	<i><b>E-445</b></i>	<i><b>0700-1900</b></i>	<i><b>ICP</b></i>
<i>EXC PVT E-449</i>			<i><b>M. GOODEN</b></i>	<i>2</i>	<i><b>E-449</b></i>	<i><b>0700-1900</b></i>	<i><b>ICP</b></i>
<i>DOZ PVT E-100</i>			<i><b>S. MAYNARD</b></i>	<i>2</i>	<i><b>E-100</b></i>	<i><b>0700-1900</b></i>	<i><b>DPI</b></i>
<i>DOZ PVT E-101</i>			<i><b>T. PARKS</b></i>	<i>1</i>	<i><b>E-101</b></i>	<i><b>0700-1900</b></i>	<i><b>DPI</b></i>
<i>DOZ PVT E-260</i>			<i><b>W. COCKRELL</b></i>	<i>4</i>	<i><b>E-260</b></i>	<i><b>0700-1900</b></i>	<i><b>DPI</b></i>

**6. Work Assignments:**  
 Refer to READ on Lassen National Forest.  
 Follow Fire Suppression Repair Plan.  
 Coordinate with HEQB at end of shift.

**7. Special Instructions:**

8. Communications							
Name	Ch	Function	Rx Freq	Rx Tone	Tx Freq	Tx Tone	Notes
C11 T15	1	COMMAND	151.1675	103.5 (T8)	159.3975	162.2 (T15)	Roop Min covers NE side of Branch V
C11 T14	2	COMMAND	151.1675	103.5 (T8)	159.3975	151.4 (T14)	Shaffer Min covers SW side of Branch V
CO FIRE	3	COMMAND	154.4450	0.0	154.0100	110.9 (T1)	Tone 1, Shaffer Min; Available for Susanville Support / Water Supply Group
CDF T29	4	TACTICAL	151.3475	192.8 (T16)	151.3475	192.8 (T16)	Fire Suppression Repair (FSR)
CDF T23	14	AIR TO GROUND	159.4500	192.8 (T16)	159.4500	192.8 (T16)	
CALCORD	15	MEDICAL	156.0750	156.7 (T6)	156.0750	156.7 (T6)	
GUARD	16	EMERGENCY	168.6250	0.0	168.6250	110.9 (T1)	EMERGENCY USE ONLY

<b>9. Prepared by: Name:</b> T. BYRD	RESL	Signature:
ICS 204	Date/Time: 7/26/2020 2200	Personnel Count: 5

CONTROLLED UNCLASSIFIED INFORMATION/BASIC











# AIR OPERATIONS SUMMARY ICS-220

Incident Name / Number Hog / CA-LMU-003874		Sunrise Startup 5:55 6:25		Cutoff 19:57		Sunset 20:27		Time Prepared 2000 Shutdown 20:57		Date Prepared Sunday, July 26, 2020 Operational Period - Date Monday July 27, 2020		Prepared By Shem Hawkins S/H Operational Period - Time 0700-0700	
General Remarks, Safety Notes, Hazards, Air Operations Special Equipment, etc. TRACK ALL DIPSITE LOCATIONS / NUMBER OF DIPS / GALLONS TAKEN. TRACK ALL DROP LOCATIONS / NUMBER OF DROPS / GALLONS DROPPED ALL GPS DATA TO BE COLLECTED IN DEGREES, MINUTES, DECIMAL MINUTES, FORMAT. AVOID Aerial Application of Retardant / Foam / Agent within 300' of Waterways, Bodies of Water, etc. If Retardant / Foam / Agent is Dropped Within These Areas Immediately Notify the AOB and Provide the Following Information: Lat / Long, Estimated Number of Gallons and a Map Detailing The Area.													
Helibase Information Name Meadow Latitude 40 18.279 Longitude 120 57.092			Request # See Radius: FAA NM Altitude: Website MSL Centerpoint: Lat Long NOTAMS: Long Frequency <a href="http://tr.faa.gov/trf2/list.html">http://tr.faa.gov/trf2/list.html</a>			Rescue Ship Information Name Guard 840 Phone 925.325.4158 Make/Model Blackhawk Location Fall River Mills Request Procedure for These Aircraft: Fall River Mills			Incident Communications See Medical Plan For Additional Info Trainee Shem Hawkins 530.990.5128 Ryan Johnson 530.340.3099				
Name Latitude Longitude (use page 2 if needed)		Position AOB ASGS HEBM		Name Matt Stamford Chris Wilson Jared Collins		Phone 951.545.8205 530.448.2408 858.359.8261		Name Brian Renner Logan Kalfback S. MCGREGOR		Phone 707.499.2247 530.723.0867 530.895.6505			
HELICOPTERS ( Use page 2 if Needed )													
FAA #	Type	Make/Model	Helibase	Avail	Start	Remarks	FAA #	Type	Make/Model	Helibase	Avail	Start	Remarks
1AJ	1	Z34	Meadow	0800	0830	A53	4TV	III	ASlar	Meadow	0800	0830	HLCO - Yellow - A132
51BH	1	UH60	Meadow	0800	0830	A54	242BH	III	L208	Meadow	0800	0830	HLCO - Blue - A72
13FH	1	UH60	Meadow	0800	0830	A70	8RL	III	Bell 407	Meadow	0800	0830	Racon
70K	1	UH60	Meadow	0800	0830	A69-Days off Mon/Tues	593	III	Bell 407	Meadow	0800	0830	IA A11
96W	1	UH60	Meadow	0800	0830	A88-Days off Mon/Tues		III					
36BH	1	UH60	Meadow	0800	0830	A33							
17FH	1	UH60	Meadow	0800	0830	A32							
82BH	1	UH60	Meadow	0800	0830	A111							
11KA	1	Kaman	Kmax	0800	0830	A112							
FIXED WING ( Use Page 2 if Needed )													
FAA #	Type	Make/Model	Base	Avail	Start	Remarks	FAA #	Type	Make/Model	Base	Avail	Start	Remarks

# ICS 205 - INCIDENT RADIO COMMUNICATIONS PLAN

1. Incident Name: <b>Hog</b>		2. Date/Time Prepared: <b>Date: 07/26/2020</b> <b>Time: 1630</b>		3. Operational Period: <b>Date From: 07/27/20</b> <b>Time From: 0700</b>		Date To: <b>07/28/20</b> Time To: <b>0700</b>		
Incident Channels								
Ch#	Function	Name	Assigned To	Rx Freq	Rx Tone	Tx Freq	Tx Tone	Notes
1	COMMAND	C11 T15	ALL DIVS	151.1675	103.5 (T8)	159.3975	162.2 (T15)	Roop Mtn covers NE side of Branch V
2	COMMAND	C11 T14	ALL DIVS	151.1675	103.5 (T8)	159.3975	151.4 (T14)	Shaffer Mtn covers SW side of Branch V
3	COMMAND	CO FIRE	UNASSIGNED	154.4450	0.0	154.0100	110.9 (T1)	Tone 1, Shaffer Mtn; Available for Susanville Support / Water Supply Group
4	TACTICAL	CDF T29	DIV A / N CONT. / FSR	151.3475	192.8 (T16)	151.3475	192.8 (T16)	Fire Suppression Repair (FSR)
5	TACTICAL	CDF T30	DIV F / G	151.3925	192.8 (T16)	151.3925	192.8 (T16)	
6	TACTICAL	CDF T31	DIV C	159.3825	192.8 (T16)	159.3825	192.8 (T16)	Available for Susanville Support / Water Supply Group
7	TACTICAL	VFIRE 21	UNASSIGNED	154.2800	156.7 (T6)	154.2800	156.7 (T6)	Available for Susanville Support / Water Supply Group
8	TACTICAL	VFIRE 22	UNASSIGNED	154.2650	156.7 (T6)	154.2650	156.7 (T6)	Available for Susanville Support / Water Supply Group
9	TACTICAL	VFIRE 23	UNASSIGNED	154.2950	156.7 (T6)	154.2950	156.7 (T6)	Available for Susanville Support / Water Supply Group
10	TACTICAL	VFIRE 24	DIV J / L	154.2725	156.7 (T6)	154.2725	156.7 (T6)	May also be used by Susanville Support / Water Supply Group
11	TACTICAL	VFIRE 25	DIV O / Staging	154.2875	156.7 (T6)	154.2875	156.7 (T6)	May also be used by Susanville Support / Water Supply Group
12	TACTICAL	VFIRE 26	DIV Q / R / WTR SPLY	154.3025	156.7 (T6)	154.3025	156.7 (T6)	VTAC14 also used for morning briefing
13	TACTICAL	VTAC 14	DIV D / E	159.4725	156.7 (T6)	159.4725	156.7 (T6)	
14	AIR TO GROUND	CDF T23	ALL DIVS	159.4500	192.8 (T16)	159.4500	192.8 (T16)	
15	MEDICAL	CALCORD	ALL DIVS	156.0750	156.7 (T6)	156.0750	156.7 (T6)	
16	EMERGENCY	GUARD	ALL DIVS	168.6250	0.0	168.6250	110.9 (T1)	EMERGENCY USE ONLY
17								
18								
19								
20	EMERGENCY	GUARD	ALL DIVS	168.6250	0.0	168.6250	110.9 (T1)	EMERGENCY USE ONLY
5. Special Instructions								
6. Prepared by (Communications Unit Leader): Name: <b>Kyle Johnson</b>								Signature: <i>Kyle Johnson</i>
ICS 205 - CONTROLLED UNCLASSIFIED INFORMATION/BASIC								DATE/TIME: <b>7/26/2020 1200</b>





CAL FIRE INCIDENT  
MANAGEMENT TEAM 3



---

**RADIO BRIEFING  
WILL BE BROADCAST ON  
VTAC 14**

---

*In real-30-ess is all*



## MEDICAL PLAN (ICS 206)

<b>1. Incident Name:</b> <p style="text-align: center; margin: 0;">Hog</p>		<b>2. Operational Period:</b> Date From: 7/27/20 Date To: 7/28/20 Time From: 0700 Time To: 0700					
<b>3. Medical Aid Stations:</b>							
Name	Location	Contact Number/Freq	Paramedics				
CAL MAT	ICP	916-516-6407/ Hog Coms	Yes				
<b>4. Transportation (Indicate air or ground):</b>							
Ambulance Service	Location	Contact Number	Level of Service				
Plumas 12 (ground)	DP 91	530-249-8483/ Hog Coms	ALS				
Mountain Medics 1 (ground)	DP 50	530-276-4810/ Hog Coms	ALS				
Guard 840 (24hr rescue/hoist)	Fall River Helibase	Hog Coms	ALS				
SEMSA Air 1 (air)	Susanville Airport	866-297-1352/ Hog Coms	ALS				
<b>5. Hospitals:</b>							
Hospital Name	Address,	Contact Number(s)/ Frequency	Travel Time		Trauma Center	Burn Center	Helipad
	Lat & Long Helipad		Air	Ground			
Banner Lassen Hospital	1800 Spring Ridge Dr Susanville, CA 96130 Lat/Long N 40° 26.27, W 120° 37.67	(530) 252-2096	5 min	10 min	Level 3	<input type="checkbox"/>	<input checked="" type="checkbox"/>
Dignity Health Mercy Medical Center Redding	2175 Rosaline Ave Redding, CA 96001 Lat/Long: N 40° 34.33, W 122° 23.80	(530) 225-7201	39 min	2 hr	Level 2	<input type="checkbox"/>	<input checked="" type="checkbox"/>
UC Davis Medical Center	2315 Stockton Blvd Sacramento, CA 95817 Lat/Long N 38° 33.28, W 121° 27.35	(916) 734-6669	1hr	3 hr	Level 1	<input checked="" type="checkbox"/>	<input checked="" type="checkbox"/>
Renown Regional Medical Center	1155 Mill Street Reno, NV 89502 Lat/Long: N 39° 31.52, W 119° 47.74	(775) 982-2005	32 min	2 hr	Level 2	<input type="checkbox"/>	<input checked="" type="checkbox"/>
<b>6. Special Medical Emergency Procedures</b>							
<b>Line Emergency</b> Crew Supervisor will contact Division Supervisor with patient complaint/condition and location. - Division Group Supervisor Contacts: 1. Closest EMS resource 2. Communications Unit - Communications Unit Contacts: 1. Ground or Air ambulance as requested. 2. Operations 3. Safety 4. Medical Unit - Division Supervisor or designee will serve as point of contact and run medical emergency on assigned channel. 1. A pre-assigned tactical frequency (i.e. CALCORD) should be used for IW1 and only for duration of the emergency. - Communications Unit will clear the Command channel for emergency traffic as needed for duration of the need.				<b>Injury Reporting Procedures</b> Nature of Injury: _____ Location of Patient: _____ Point of Contact: _____ Transportation Requested by: Air _____ Ground _____ Point of Pick-Up: _____ Lat: _____ Long: _____ Patient Unit ID: _____ Is an EMT with Patient: Yes _____ No _____ Age: _____ Sex: Male _____ Female _____			
<b>Camp Emergency</b> Contact Medical Unit with patient complaint/condition and location. Medical staff will respond to stabilize the patient. - Medical Unit contacts 1. Communications 2. Safety 3. Logistics 4. Operations 5. Crew Supervisor 6. Comp/Claims				All Emergencies - Secure the area and identified witnesses for later investigation. Keep accurate log of events.			
<input type="checkbox"/> Check box if aviation assets are utilized for rescue. If assets are used, coordinate with Air Operations.							
<b>7. Prepared by (Medical Unit Leader):</b>							
S. McGary				Signature:			
<b>8. Approved by (Safety Officer):</b>							
D. SARGENTI / D. BROCKMAN (T)				Signature:			
ICS 206		Date/Time: 7/26/20 2000					



CAL FIRE INCIDENT  
MANAGEMENT TEAM 3



---

## TRAINING SPECIALIST MESSAGE

### TRAINEES:

In order to receive documented credit for your training assignment, you must register with the TNSP prior to starting the demob process.

### TRAINERS/EVALUATORS:

If as much work as possible has been completed in the position task book, you are strongly encouraged to take advantage of your time in camp and conduct the training close-out with the TNSP. It is not necessary to wait until you demob.

Bring the following with you to the "exit interview"

- Your properly initiated Position Task Book
- Completed and signed ICS 225 Performance Evaluation
- Completed and signed Evaluation Record

Justin Voyson TNSP 661-547-8629

A handwritten signature in black ink, appearing to be "Justin Voyson".



# INCIDENT MANAGEMENT TEAM 3



## DEMOBILIZATION MESSAGE

Hog Incident  
CA-LMU-003874

We appreciate your efforts during this incident and want to make sure that we get you to your next destination safely and efficiently. When we begin demobilization, a Tentative Demobilization List will be posted in several places around base camp, including the briefing area and the eating area. If you are on this list, please adhere to the following:

### SHOW UP AT THE DESIGNATED TIME

- Show up at the designated time.
- Do not show up early.
- Do not show up late.

A demobilization schedule has been prepared in careful coordination with all essential demobilization functions. Not following the demobilization schedule can have significant negative impacts on the Demobilization Unit staff and all other resources scheduled for demobilization. We do not want you or any other resources to have unnecessary delays. Please adhere to your scheduled demobilization time.

### BE PREPARED FOR A RE-ASSIGNMENT

There may be other incidents in the state that are in need of resources. There is a possibility that some of the resources released from this incident will be immediately assigned to another one. Please make sure you are properly supplied, rested, and nourished while waiting for your designated demobilization time.

### BE THOROUGH AND EFFICIENT

Demobilization begins and ends at the Demobilization Unit. Please follow the instructions given to you when starting the demobilization process. Returning to the Demobilization Unit with a complete and accurate Demobilization Check-Out (ICS-221) form will help prevent any unnecessary delays and ensure you are shown as available for future assignments. Unforeseen delays can occur during the demobilization process, such as mechanical issues discovered while at Ground Support. Plan to visit the Time Unit towards the end of the demobilization process in order to provide an accurate accounting of your time.

Prepared by DMOB Eric Campbell

A handwritten signature in black ink, appearing to read "Eric Campbell".



# PUBLIC INFORMATION SECTION



Incident Information Line: (530) 282-5714  
Incident Media Line: (530) 282-5714

Incident Updates:  
[www.fire.ca.gov/current\\_incidents](http://www.fire.ca.gov/current_incidents)

STATUS	
Incident Start Date: 7/18/2020	Incident Start Time: 3:30 PM
Cause: Under Investigation	Acres: 9545
Containment: 60%	Total Personnel: 1883

**MEDIA** – The California State Penal Code Section 409.5(d) allows the news media to enter scenes of disaster, riot or civil disturbance. Properly identified members of the news media should not be restricted from entering locations specified within the code. However, this does not include crime scenes, private property and does not imply that the news media may interfere with incident operations while they are in the areas of concern. More information can be found [here](#).

**CAL FIRE SOCIAL MEDIA POLICY** – When assigned to a CAL FIRE incident, you will adhere to the CAL FIRE Social Media Policy, Section 0691. You can find further information about the CAL FIRE Social Media Policy [here](#).

**PHOTOGRAPHS AND VIDEOS OF INCIDENT** – We are in a new era of media. Media no longer means news/broadcast industry, but now refers to anyone that has the capability to shoot video, photographs and post them onto social media sites in a matter of minutes. Unfortunately, we have seen some instances of photographs or videos that have depicted unsafe, unprofessional or embarrassing circumstances which are a serious breach of ethics. When this happens, it reflects poorly on all that are attached to this incident. Posting an inappropriate video, photo or blog comment could expose oneself to unwanted ramifications. It may be unsafe to shoot photos or video and a firefighter who is concentrating on a camera loses their situational awareness.

The Public Information Office would like copies of the video and pictures that you safely took while not in an emergency situation, fire suppression activity or in an overhead assignment. Bring your video and pictures to the Public Information trailer; they will be reviewed and possibly uploaded to our many CAL FIRE social media sites. Remember, we don't want photographs or videos that depict unsafe, unprofessional or embarrassing circumstances, which are a serious breach of ethics.

**LOST AND FOUND** – The Information Section will manage lost and found items for the incident. If you have lost an item please leave your contact information and what you have lost at the Information Section. If you have found an item on the incident, bring the item to the Information Section with your contact information as well. All items left in Lost and Found will be turned over to the local CAL FIRE Shasta Unit.

**MAIL SERVICE** – The Information Section can assist you with sending and receiving mail.

Prepared by Dan Olson



# FINANCE SECTION MESSAGE



**CAL FIRE staff; please ensure you start your eFC-33s with the Personnel Time Recorder.**

**Please make sure hired equipment shift tickets are completed for all private vendors and dropped off in the Time Unit by agency personnel / line supervisors only, as well as EERAs.**

**Please report all injuries and suppression damage to the Comp / Claims Unit, no matter how minor.**

**The Finance Section is located in the grass area across from briefing.**

**Federal and Contract resources need to check-in with the Federal Time Unit.**

**OES is located in the back of fairgrounds.**

**ROGER RAINES, FSC1**  
**TERRY EASTWOOD, DEP. FSC1**

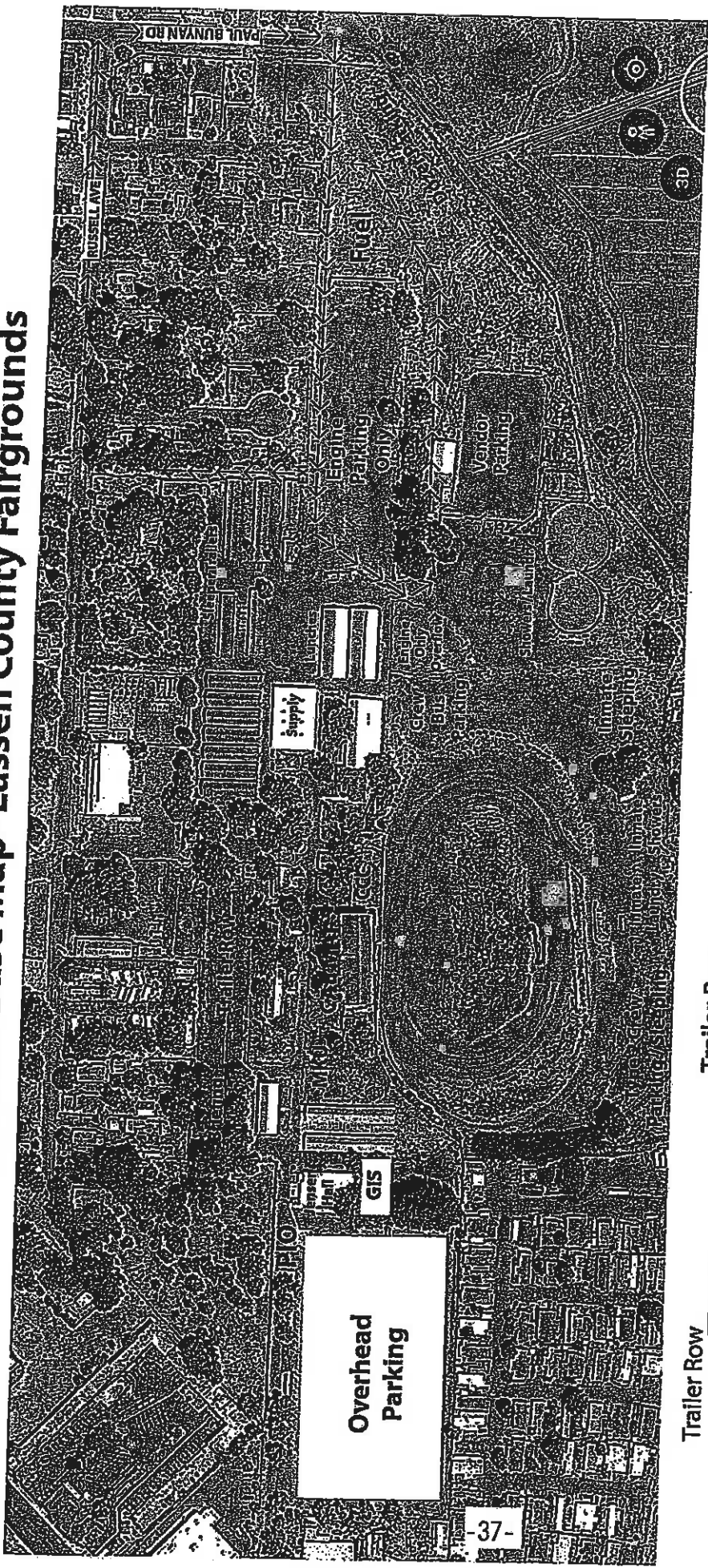
A handwritten signature in black ink, appearing to be "Terry Eastwood".

# Shift Ticket Example

EMERGENCY SHIFT TICKET and EVALUATION FORM					Contractor Name	
The responsible Government Officer will complete this form each shift					Fireline Builders	
Incident or Project Name <b>HOG</b>		Incident Number <b>CA-LMU-003874</b>	Request Number <b>E # Here</b>		Operator #1 <b>Bob Smith</b>	Operator #2 <b>Jeff Smith</b>
Agreement Number <b>Obtain from vendor's agreement</b>					Operator Furnished By: <input checked="" type="checkbox"/> Contractor <input type="checkbox"/> Government	
Equipment Make <b>CAT</b>		Equipment Model / Type <b>D6N, Type II E</b>			Operating Supplies Furnished By: <input checked="" type="checkbox"/> Contractor <input type="checkbox"/> Government	
Serial Number <b>6LN3344</b>		Licence Number			Equipment Status <input checked="" type="checkbox"/> Inspected <input checked="" type="checkbox"/> Under Agreement <input type="checkbox"/> Released by Government <input type="checkbox"/> Withdrawn by Contractor	
Equipment Use (Circle) Hours / Days / Miles					Remarks/Comments ** <b>NO DAMAGE / NO CLAIMS</b>	
Date Mo / Day	Start	Stop	Work	Assignment		
<b>7/28</b>	<b>0700</b>	<b>2400</b>	<b>17</b>	<b>Division B</b>		
<b>7/29</b>	<b>0001</b>	<b>0700</b>	<b>7</b>	<b>Division B</b>		
Vendor Rating					Govt. Rep. Name and Position - PRINT <b>Mike Weber Div. A</b>	
					Govt. Rep. Signature <i>Mike Weber</i>	
Met Performance Expectations					Contractor Signature <i>Bob Smith</i>	
Equipment in Safe Working Condition					Date <b>07/20/20</b>	
Operator Skill Level					Time <b>0800</b>	
Operates Safely					Overall Performance	
Operator's Cooperation Level					* NOTE: Any rating of POOR requires an explanation in Comment Section.	
Overall Performance					**Final evaluation or for more documentation, use an ICS Form 230 or equivalent.	
					CALFIRE 297 (Rev 3-2011)	
Pink - Finance		Blue - Home Unit HE Coordinator		Yellow - Vendor		White - Govt Representative

EMERGENCY SHIFT TICKET and EVALUATION FORM					Contractor Name	
The responsible Government Officer will complete this form each shift					Fireline Builders	
Incident or Project Name <b>Hog</b>		Incident Number <b>CA-LMU-003874</b>	Request Number <b>E # Here</b>		Operator #1 <b>Bob Smith</b>	Operator #2
Agreement Number <b>Obtain from vendor's agreement</b>					Operator Furnished By: <input checked="" type="checkbox"/> Contractor <input type="checkbox"/> Government	
Equipment Make <b>CAT</b>		Equipment Model / Type <b>D6N, Type II E</b>			Operating Supplies Furnished By: <input checked="" type="checkbox"/> Contractor <input type="checkbox"/> Government	
Serial Number <b>6LN3344</b>		Licence Number			Equipment Status <input checked="" type="checkbox"/> Inspected <input checked="" type="checkbox"/> Under Agreement <input type="checkbox"/> Released by Government <input type="checkbox"/> Withdrawn by Contractor	
Equipment Use (Circle) Hours / Days / Miles					Remarks/Comments ** <b>NO DAMAGE / NO CLAIMS</b>	
Date Mo / Day	Start	Stop	Work	Assignment		
<b>7/28</b>	<b>0001</b>	<b>0700</b>	<b>7</b>	<b>Off Shift</b>		
<b>7/28</b>	<b>0701</b>	<b>1900</b>	<b>12</b>	<b>Division B</b>		
<b>7/28</b>	<b>1901</b>	<b>2400</b>	<b>5</b>	<b>Off Shift</b>		
Vendor Rating					Govt. Rep. Name and Position - PRINT <b>Mike Weber Div. A</b>	
					Govt. Rep. Signature <i>Mike Weber</i>	
Met Performance Expectations					Contractor Signature <i>Bob Smith</i>	
Equipment in Safe Working Condition					Date <b>07/20/20</b>	
Operator Skill Level					Time <b>0600</b>	
Operates Safely					Overall Performance	
Operator's Cooperation Level					* NOTE: Any rating of POOR requires an explanation in Comment Section.	
Overall Performance					**Final evaluation or for more documentation, use an ICS Form 230 or equivalent.	
					CALFIRE 297 (Rev 3-2011)	
Pink - Finance		Blue - Home Unit HE Coordinator		Yellow - Vendor		White - Govt Representative

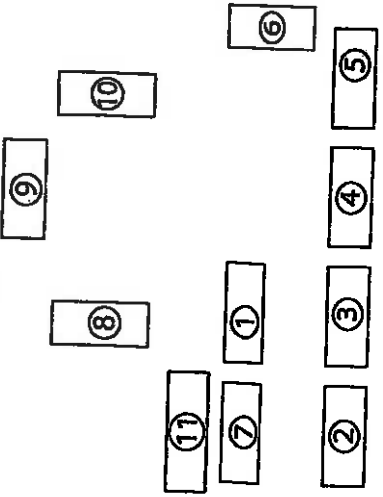
# Incident Base Map- Lassen County Fairgrounds



## Trailer Row

1. Federal Personnel Time
2. Hotels and Accommodations
3. Time Section Chief/ Equipment Time
4. Incident
5. Time Unity/ Calfire Time
6. Facilities/ Logistics/ Ordering
7. Finance Section Chief/ Comp Claims
8. Safety/ Operations
9. Incident Commander
10. Law Enforcement Liaison
11. Finance

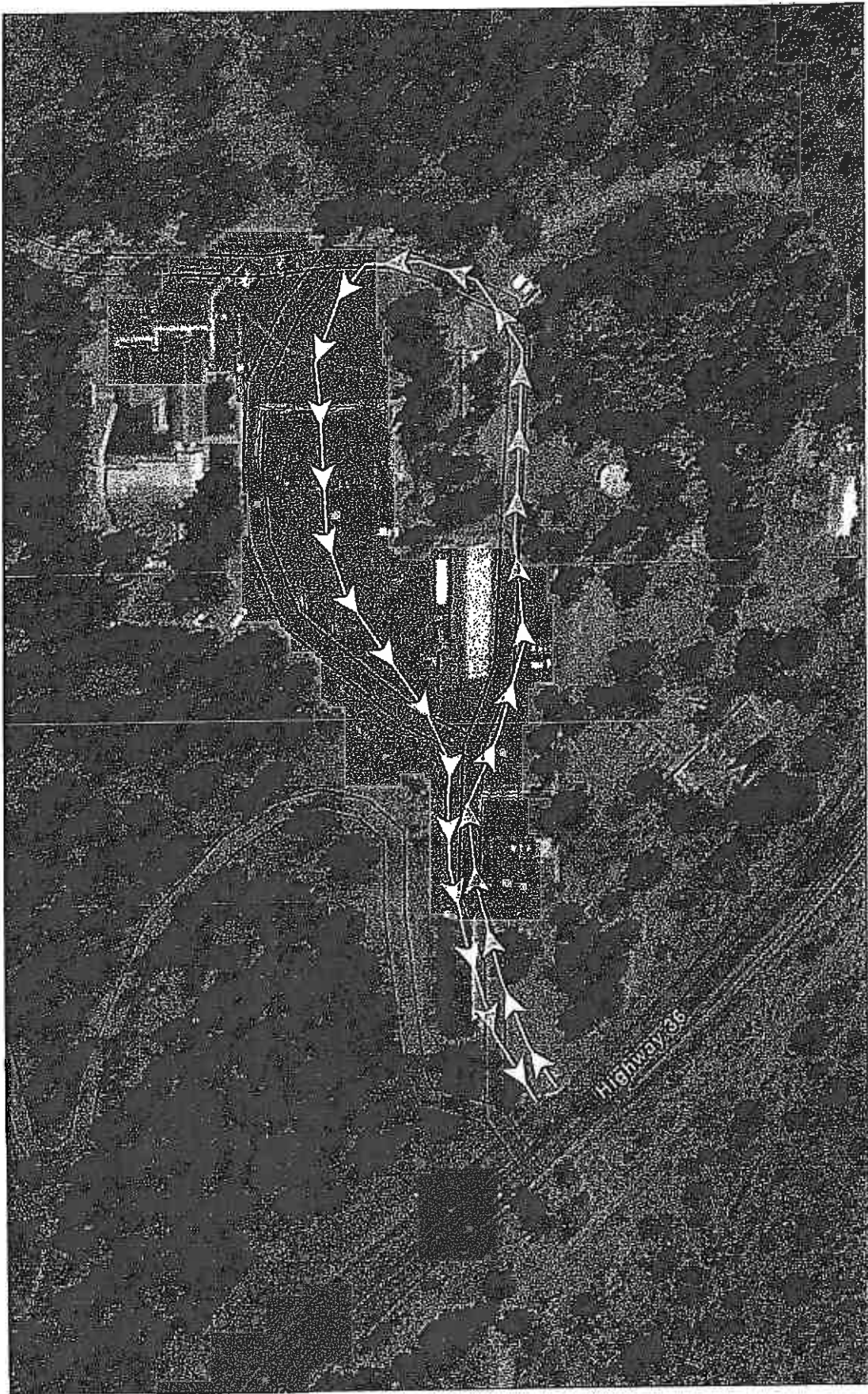
## Trailer Row



## Jensen Hall

- Situation
- Resources
- Plans
- Demob
- Check In

GROUND SUPPORT  
LMU Headquarters, 697 CA-36, Susanville, CA 96130



For after-hours mechanical needs, call 925-532-5437.

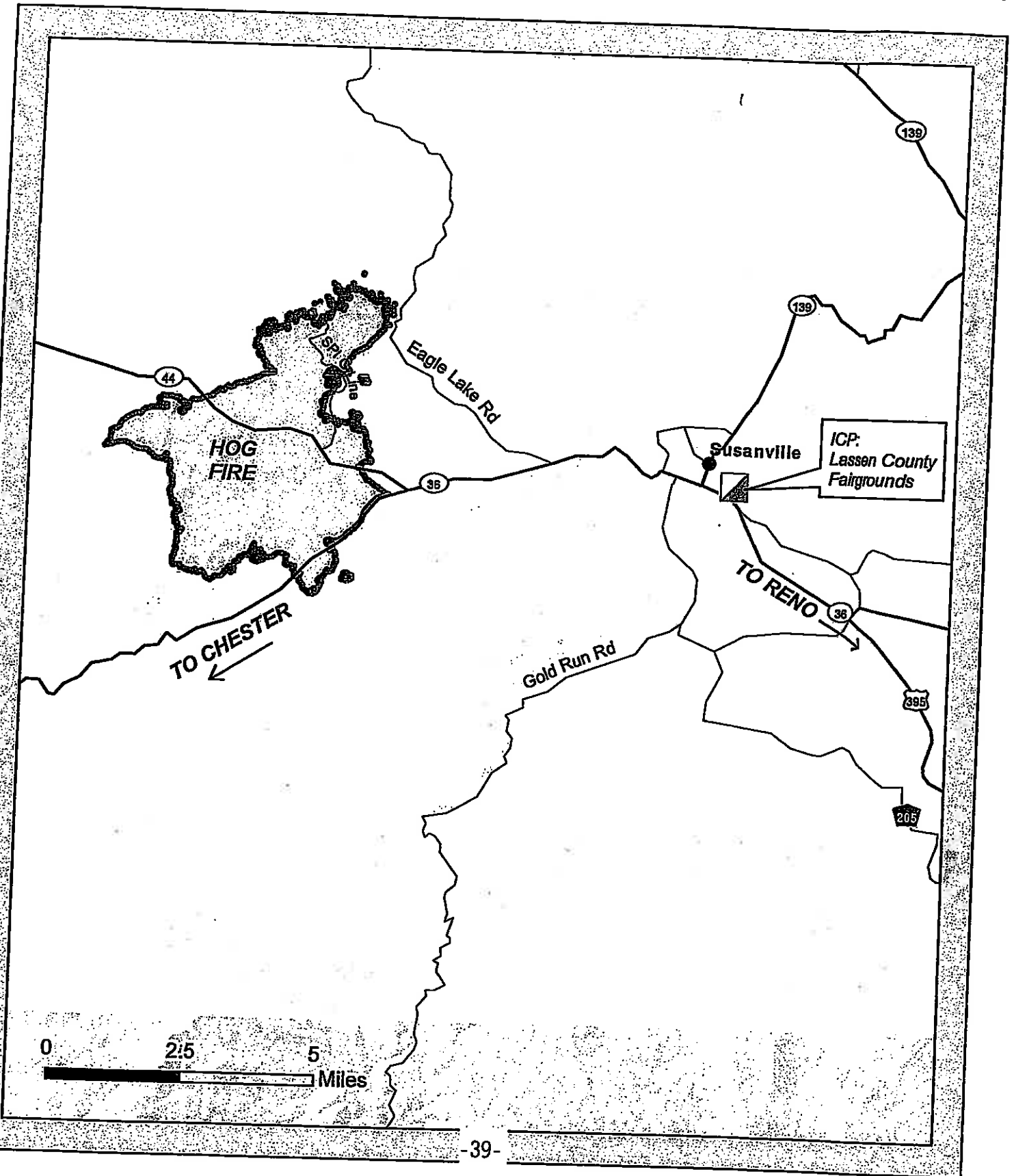




# Travel Map

## HOG INCIDENT

CA-LMU-003874



**THIS PAGE INTENTIONALLY BLANK**

### UNIT LOG CONT. (ICS 214)

1. Incident Name:

Hog

2. Operational Period: Date From: 7/27/20 Date To: 7/28/20

Time From: 0700 Time To: 0700

6. Activity Log

TIME	MAJOR EVENTS

7. Prepared By: \_\_\_\_\_ Date/Time: \_\_\_\_\_

NIMS IAP

# UNIT LOG (ICS 214)

1. Incident Name: **Hog** 2. Operational Period: Date From: 7/27/20 Date To: 7/28/20  
Time From: 0700 Time To: 0700

3. Unit Name/Designators 4. Unit Leader (Name and ICS Position)

5. Personnel Assigned/Designators

NAME	ICS POSITION	HOME BASE

6. Activity Log (Continue on Reverse)

TIME	MAJOR EVENTS

7. Prepared By: Date/Time: INJAS 04P