

INCIDENT ACTION PLAN

HOG INCIDENT

CA-LMU-003874

Tuesday



OPERATIONAL PERIOD

7/28/2020 0700
to
7/29/2020 0700



INCIDENT OBJECTIVES (ICS 202)

1. Incident Name: <p style="text-align: center;">Hog</p>	2. Operational Period:	Date From: 7/28/2020 Time From: 0700	Date To: 7/29/2020 Time To: 0700
--	-------------------------------	---	-------------------------------------

3. Objective(s):

Strategic Objectives

A full suppression strategy is to be implemented on the Hog Incident. Values at risk associated to the incident include human safety, private property and associated improvements, electrical power infrastructure, and cultural values. Minimize acres burned on all lands by utilizing effective and efficient strategies and tactics while maintaining safety first.

Leaders Intent

Work effectively with cooperative partners towards a common goal of protecting values in a safe and efficient manner. All incident assigned personnel should be prepared to take the appropriate actions regarding:

- Professional behavior, conduct timely / effective communications
- Personal safety and safety of others, including driving slowly, safely and defensively Implementation of tactics that offer a high probability of success
- Manage fatigue by taking breaks and maintaining work rest cycles
- All line supervision personnel including crew and striketeam leaders must attend the morning Operational Briefing

Management Objectives

- Fight fire aggressively while maintaining safe work practices to minimize threats to the public and emergency responders, all actions and efforts will focus on safe guarding the citizens and resources of Lassen County
- Ensure COVID-19 precautions and best practices are met always
- Minimize damage to structures, private property and other improvements in the fire area
- Protect natural, cultural, heritage resources
- Continue to foster and maintain positive relationships with all local cooperators and stakeholders
- Provide timely and accurate incident information
- Maintain fiscal accountability keeping costs commensurate with values at risk

Control Objectives

- Keep the fire East of the line from Diamond Mountain to Chaparral Hill to Peg Leg Mt. to Mike's Lodge
- Keep the fire South of Eagle Lake Summit to Bridge Creek Springs Road
- Keep the fire West of D Line
- Keep the fire North of Diamond Mountain to Gold Run Road

General Situational Awareness

Steep and rugged terrain, critically dry and receptive fuel beds, active area for fire history and drought stressed trees.

Stop, Think, Organize, Proceed

5. Site Safety Plan Required? Yes No

Approved Site Safety Plan(s) Located at:

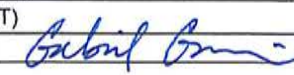
6. Incident Action Plan

<input checked="" type="checkbox"/> ICS 203	<input checked="" type="checkbox"/> ICS 215A	<input checked="" type="checkbox"/> COVID-19 Checklist	<input checked="" type="checkbox"/> Ground Support Map
<input checked="" type="checkbox"/> ICS 204	<input checked="" type="checkbox"/> ICS 220	<input checked="" type="checkbox"/> Training Message	<input checked="" type="checkbox"/> Facilities Map
<input checked="" type="checkbox"/> ICS 205	<input checked="" type="checkbox"/> Weather Forecast	<input checked="" type="checkbox"/> PIO Message	<input checked="" type="checkbox"/> Travel Map
<input checked="" type="checkbox"/> ICS 206	<input checked="" type="checkbox"/> Fire Behavior	<input checked="" type="checkbox"/> Finance Message	<input type="checkbox"/>
<input checked="" type="checkbox"/> ICS 208	<input checked="" type="checkbox"/> Safety Message	<input checked="" type="checkbox"/> Shift Ticket Example	<input checked="" type="checkbox"/> ICS 214

7. Prepared By: S. DEBENEDET Position/Title: PSC Signature:

8. Approved by Incident Commander: B. SEE Signature:

ORGANIZATION ASSIGNMENT LIST (ICS 203)

1. Incident Name: Hog		2. Operational Period: Date From: 7/28/2020		Date To: 7/29/2020	
		Time From: 0700		Time To: 0700	
3. Incident Commander(s) and Command Staff:			7. Operation Section:		
IC/UC's	B. SEE		Operations	S. NORMAN	
Deputy	B. FARIAS / K. BOHALL (T) / G. BELYEA (T)		Deputy Operations	M. BRUNTON	
Safety Officer	D. SARGENTI / D. BROCKMAN		Night Ops	J. OHS	
Information Officer	D. OLSON / B. MERCADO (T)		Staging Area		
Liaison Officer	M. SMITH / J. DAPPER (T) / M. WELLS (CHP)		Branch	I	S. JERRY
4. Agency/Organization Representatives:			Division/Group	A	R. GAYLOR / R. MICHISON (T)
Agency/Organization	Name		Division/Group	C	W. DARNALL
CALFIRE LMU Line Officer	L. CALDWELL		Division/Group	D / E	R. PETERSON
USFS Agency Rep	P. MARTENS		Division/Group		
USFS Agency Admin	B. DRAKE		Division/Group		
Cal OES	K. BAILEY		Branch	V	G. DEGRAFFENREID (12 HR)
BLM Admin	E. RYAN		Division/Group	F / G	M. MILOJEVICH
CHP	LT. A. POYNER		Division/Group	J / L	B. WILSON
OES Mngr.	S. ROJAS		Division/Group		
LCSO Agency Rep	M. CARNEY		Division/Group		
CDCR	T. MAINE		Division/Group		
CCC	C. HARRIS		Branch	IX	J. PIERCE / J. GAHAGAN (T)
Oregon Dept.of Forestry	B. ARNSMEIER		Division/Group	O	N. GARCIA
			Division/Group	Q	J. REYES / J. BAKER (T)
			Division/Group	R	G. ENGEN / B. WRIGHT (T)
			Division/Group		
			Branch	FSR	I. HOUSER (12 HR)
			Division/Group		
5. Planning Section:			Branch	NORTH CONTINGENCY	G. SCHALL (12 HR)
Chief	B. BLOXHAM		Division/Group	NORTH CONTINGENCY	
Deputy	S. DEBENEDET / G. GARCIA		Division/Group		
Resource Unit	L. PLATA / T. BYRD / J. HEALD (T)		Division/Group		
Situation Unit	T. TUGGLE / M. THAU (T)		Branch	ICP Staging	
Documentation Unit	M. SCHAEFFER		Division/Group		
Demobilization Unit	E. CAMPBELL / A. HUBBS		Division/Group		
GISS	S. STANISH		Division/Group	Water Supply	T. JOHNSON
FBAN	S. VOLMER		Division/Group		
IMET	T. FUENTES		Division/Group		
Training Tech Spec	J. VOYSON		Air Operations Branch		Director: M. STANFORD / S. HAWKINS (T)
Crew Tech Spec	M. O'NEIL		Air Support Group Supervisor		C. WILSON
6. Logistics Section			Air Tactical Group Supervisor		S. MCGREGOR
Chief	R. TOVAR		Helibase Manager		J. COLLINS
Deputy	R. CLUFF				
Supply Unit	J. BECKMAN / J. PECKHAM (T)		8. Finance/Administration Section:		
Facilities Unit	R. HOSTETLER		Chief	R. RAINES	
Ground Support Unit	A. WHITLOCK		Deputy	T. EASTWOOD / P. AGUADA (T)	
Communications Unit	K. JOHNSON		Time Unit	J. OROZCO JR. / Fed Finance T. FORK	
Medical Unit	K. FORTNEY		Procurement Unit	K. SHAEFER	
Ordering Manager	J. SCHEID		Comp/Claims Unit	A. HESTERLY	
Hired Equip. Tech Spec	A. WHITLOCK		Cost Unit	D. SOLIS (T)	
Prepared By: Name:	G. GARCIA	Position/Title:	PSC	Signature:	
ICS 203		Date/Time:	7/27/2020 2000		



Hog Fire Forecast

FORECAST NO: 8
 NAME OF FIRE: Hog
 UNIT: CALFIRE Team 3
 PREDICTION FOR: Tuesday Shift
 SHIFT DATE: July 28, 2020
 FORECAST ISSUED: 1900 PDT July 27, 2020

Incident Meteorologist (IMET): Tony Fuentes
 Email: Tony.Fuentes@noaa.gov
 Cell: (240) 778-5300

*** Dry and Breezy after Midweek ***

Drier conditions will prevail today with west-southwest breezes. Expect afternoon cumulus cloud build ups during the afternoon particularly just north of incident where a band of clouds typically forms with daytime heating. An isolated shower is possible during the afternoon. A dry and breezy pattern will then settle in heading into the weekend with the minimum humidities reaching near single digits and breezy southwest winds.

TODAY (TUESDAY):

WEATHER: Partly cloudy, afternoon cumulus buildups mainly north of the incident.
 5% chance for an isolated shower.
 WINDS (EYE LEVEL): Upslope 3-6 mph becoming WSW 8-12 mph gusts to 15 mph.
 MAX TEMPERATURES: 83-88°. 92° at ICP Camp.
 MINIMUM HUMIDITY: 13-19%
 TRANSPORT WIND: SW 10-15 mph
 HAINES: 4 LAL: 1

TONIGHT (TUESDAY NIGHT):

WEATHER: Mostly clear.
 MIN TEMPERATURES: 55-60°F
 MAX HUMIDITY: 52-57%
 WINDS (EYE LEVEL): Downslope 3-6 mph.
 HAINES: 3 LAL: 1

WEDNESDAY:

WEATHER: Dry and breezy.
 WINDS (EYE LEVEL): Upslope 3-7 mph becoming SW 10-15 mph gusts 23 mph.
 MAX TEMPERATURES: 82-87°. 93° at ICP Camp.
 MINIMUM HUMIDITY: 10-15%
 TRANSPORT WIND: SW 10-20 mph
 HAINES: 5 LAL: 1

Extended Forecast Table:

	Thu Jul 30	Fri Jul 31	Sat Aug 1	Sun Aug 2
Wx	Dry/Breezy	Dry/Breezy	Dry/Breezy	Dry/Breezy
Wind:	SW 12-16 mph Gusts 25 mph	SW 10-14 mph Gusts 22 mph	SW 10-14 mph Gusts 18 mph	SW 10-15 mph Gusts 20 mph
Max Temp	82-86°	82-86°	84-88°	84-88°
Min RH	9-14%	9-14%	10-15%	11-16%
Min Temp	50-55°	49-54°	49-54°	50-55°
Max RH	38-43%	37-42%	37-42%	40-45%
Haines / LAL / CWR	5 / 1 / 0%	4 / 1 / 0%	4 / 1 / 0%	5 / 1 / 0%

FIRE BEHAVIOR FORECAST

FORECAST NUMBER: 8

TYPE OF FIRE: Wildfire

FIRE NAME: HOG

OPERATIONAL PERIOD: 7/28/20 – 7/29/20

DATE ISSUED: 7/27/2020

TIME ISSUED: 0600

UNIT: CA-LMU-003874

SIGNED: 

Typed/printed: Stephen Volmer FBAN

INPUTS

WEATHER SUMMARY

Warming and drying trend will begin today. There is the chance of isolated showers in the area during the afternoon, with a LAL of 1. Relative Humidity will drop to the low teens and increase wind speeds by Thursday.

Winds upslope 3-6 becoming West Southwest 8-12 mph with gusts to 15 mph.

See IMET forecast for specific details

OUTPUTS

FIRE BEHAVIOR

GENERAL:

- The fire area has an abundance of heavy timber and slash intermixed with bitterbrush and Manzanita, along with clear cut plots littered with moderate to heavy slash.
- Fuel moistures in the bitterbrush are nearing record levels, and timber fuel moistures are very low due to drought conditions in the area. Fuel moistures in Manzanita are much higher, slowing fire spread
- Scorched and fire dried brush can carry fire when pushed by forecasted winds

Timber and slash: Rate of spread 6-10 ft/min // Flame length 3-7 feet // Spotting 1000 feet // PIG 70%

Bitterbrush: Rate of spread 9-12 ft/min // Flame lengths 10-15 feet // Spotting ¼ mile // PIG 80%

Manzanita: Rate of spread 4-7 ft/min // Flame lengths 2-4 ft // Spotting 500 feet // PIG 65%

Values above are valid for any new starts in the area

SPECIFIC:

Branch I & V: Fire behavior is minimal, with stump holes and smoldering heavy material burning down well interior. Increased winds will cause smoldering material and unburned islands to become active, as well as releasing fire weakened timber.

Branch IX: Entire branch received little moisture over the past 2 days. Unburned islands continue to hold heat and smolder. The timber understory and clear-cut plots contain heavy dead and down and have a higher probability to contain smoldering spots fires.

AIR OPERATIONS: Partially cloudy with afternoon cumulus build ups. Expect gusty conditions over the ridge tops. Southwest transport winds 10-15 mph.

Sunrise: 05:58 Sunset: 20:20

SAFETY

- Snags and stump holes are likely in timber areas.
- Fire weakened timber will continue to release throughout the burn, especially in gusty conditions.
- Be alert for new starts, as they will grow quickly with the high wind and low humidity.



CAL FIRE INCIDENT MANAGEMENT TEAM 3



1. INCIDENT NAME: Hog		2. DATE PREPARED: July 27, 2020	3. TIME PREPARED: 1500
4. PREPARED BY: David Brockman SOF1(t)	5. LEADER NAME: David Sargenti SOF1	6. OPERATIONAL PERIOD: 7/28/2020 0700 TO 7/29/2020 0700	

SAFETY MESSAGE

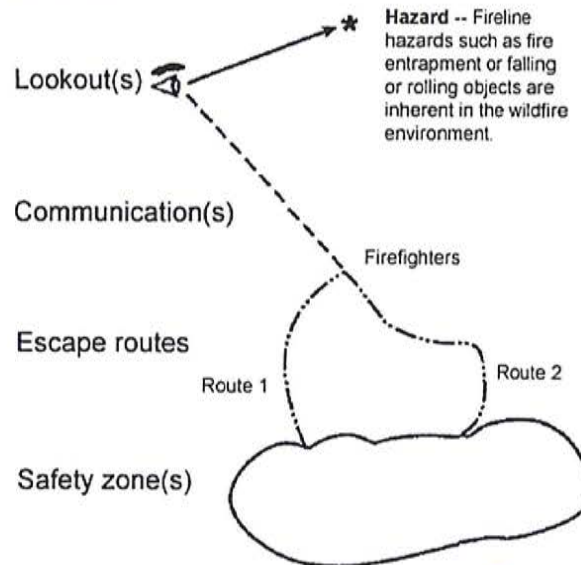
Dehydration

A harmful reduction in the amount of water in the body.

- Take all COVID 19 precautions.
- Trees are weakened due to fire activity. Look Up, Down, and Around.
- Make sure everyone gets a briefing!
- Monitor your hydration/nutrition intake and keep adequate supplies of each.
- Be aware for changing weather conditions
- Drive defensively, watch your speed and use warning lights when needed.
- Watch for civilian traffic in the fire area.



7. NO COMMUNICATION LINK WITH CREW MEMBERS/SUPERVISOR



CAL FIRE INCIDENT MANAGEMENT TEAM 3 SOF1 (T) David Brockman



INCIDENT RISK ANALYSIS ICS 215A



BRANCH	HAZARDOUS ACTIONS/ CONDITIONS	MITIGATIONS/WARNINGS/REMEDIES
ALL	COVID 19	<ul style="list-style-type: none"> • Wear mask when in camp and around the public. • Wash/sanitize hands often. • Maintain social distancing when applicable. • Complete daily COVID screening process.
ALL	DRIVING HAZARDS	<ul style="list-style-type: none"> • Watch your speeds. • Watch for civilian traffic on the roadways. • Drive defensively! Expect the unexpected. • Be aware of debris in the roadways from rollout, suppression operations.
ALL	WEATHER	<ul style="list-style-type: none"> • Warming temperatures. • Dropping humidity. • Watch for changing weather conditions.
ALL	PERSONNEL SAFETY	<ul style="list-style-type: none"> • All personnel are responsible for their personal safety. • Immediately report any suspicious activity.
ALL	POWER LINES	<ul style="list-style-type: none"> • Be cautious if you encounter any down lines. • Make appropriate notifications if found.
ALL	HYDRATION	<ul style="list-style-type: none"> • Drink water before, during and after each shift. • Be alert for signs of heat stress in yourself and others.
ALL	FIRE AND DROUGHT WEAKENED TREES/SNAG HAZARDS	<ul style="list-style-type: none"> • Follow Hazard Tree Safety Guidelines (IRPG p. 22). • Many of the trees within the fire area and along roadways are stressed due to drought conditions and burn times.
ALL	MOP UP	<ul style="list-style-type: none"> • Wear all appropriate PPE. • Watch for stump holes. • Do not get complacent.
ALL	COMMUNICATIONS	<ul style="list-style-type: none"> • Check the communication plan for frequency assignments. • Be clear and concise when talking on the radio. • Use human repeaters as needed.
ALL	BRIEFINGS	<ul style="list-style-type: none"> • Make sure everyone gets a briefing on the plan for the day. • Document this on your ICS 214.
ALL	LCES	<ul style="list-style-type: none"> • Ensure that LCES is being utilized.
ALL	HELICOPTER AWARENESS	<ul style="list-style-type: none"> • Watch for rotor wash when working near helicopters. • Understand that hazardous trees may react to helicopters overhead. • Monitor assigned aircraft frequencies.
ALL	HEAVY EQUIPMENT	<ul style="list-style-type: none"> • Watch out for heavy equipment traffic! • Be aware of heavy equipment working in the area. • Be watchful around heavy equipment, they may not see you.
Incident Name: <div style="font-size: 2em; font-weight: bold; text-align: center;">Hog</div>		Date Prepared: 7/27/2020 Prepared by: David Brockman SOF1 (T)
		Operational Period: 7/28/2020-7/29/2020 0700-0700

In readiness is all



CAL FIRE INCIDENT MANAGEMENT TEAM 3



Fire and COVID-19 Briefing Checklist

Self-Awareness / Screening

- Immediately separate yourself from others.
- Notify supervisor if you or others experience:
 - Cough, more than expected
 - Shortness of breath or difficulty breathing
 - New loss of taste or smell
 - Fever ○ Sore throat
 - Chills ○ Muscle pain
- Review and follow crew and division plans to isolate, triage, and transport symptomatic personnel.

Hygiene on the Fireline

- Properly wash or sanitize your hands often, especially before and after eating or entering a public place, and after coughing or sneezing.
- Avoid handshakes and communal use items.
- Maintain a supply of hand sanitizer and hand wipes. Inform supervisor of needed resupply.
- Disinfect high touch surfaces often:
 - Radios, phones, doors, pumps, fuel cans, etc.

Social Distancing and Protective Equipment

- Initiate, practice, and remind others of social distancing.
- Conduct briefings and conversations outdoors and at least 6 feet apart.
- Utilize face coverings as a tool when practical.
- Clean or replace dirty face coverings, equipment, and PPE.

Communications

- Face coverings and social distancing complicate communications. Ensure effective sender/receiver messaging.

Protect yourself, your crew, and your camp!

Find more information: <https://www.nwccg.gov/coronavirus>.

NFES 002646 (06/2020)

In readiness is all

ASSIGNMENT LIST (ICS 204 WF)

CONTROLLED UNCLASSIFIED
INFORMATION//BASIC

1. Incident Name: <p style="text-align: center; font-size: 1.2em;">Hog</p>	2. Operational Period: Date From: 07/28/20 Date To: 07/29/20 Time From: 0700 Time To: 0700	3. Branch Division <p style="text-align: center; font-size: 1.5em;">IX O</p> Page 1 of 1 Oscar
--	---	--

4. Operations Personnel:	
Operations Section Chief: S. NORMAN	Night Ops: J. OHS
Branch Director: J. PIERCE / J. GAHAGAN (T)	Branch Safety:
Division/Group Supervisor: N. GARCIA	Air Attack: S. MCGREGOR

5. Resources Assigned:		** Resources Below in Bold are 12 Hour **					
Resource Identifier	ALS	LWD	Leader	Personnel	Request #	Hours	Reporting Location
STC CZU 9170C			C. JACOBSEN	16	E-64	0700-0700	DP 91
STC XTB 4226C			K. JAKUBOS	19	E-390	0700-0700	DP 91
CRW T2 C-31			J. COKE	20	C-31	0700-1900	DP 91
CRW PVT C-67			M. OJEDA	20	C-67	0700-1900	DP 91
CRW T2 C-80			A. CORONADO	20	C-80	0700-1900	DP 91
CRW T2 C-82			R. HERNANDEZ	20	C-82	0700-1900	DP 91
CRW T2 C-89			R. HOFFMAN	20	C-89	0700-1900	DP 91
CRW T2 C-93			L. AYALA	20	C-93	0700-1900	DP 91
WT PVT E-44			P. MARYMEE	2	E-44	0700-0700	DP 91
WT PVT E-109			D. OAILAR	2	E-109	0700-0700	DP 91
WT PVT E-257			F. LUTS	2	E-257	0700-0700	DP 91
WT PVT E-334			D. MCGARR	2	E-334	0700-0700	DP 91
FEMP DUNCAN			A. DUNCAN	1	O-353	0700-0700	DP 91
FEMT ATKINS			S. ATKINS	1	O-362	0700-0700	DP 91
SOFR WILLIAMS			J. WILLIAMS	1	O-68.70	0700-0700	DP 91

6. Work Assignments:
 100% Mop Up.
 Pull hose as needed.
 Backhaul all trash.

7. Special Instructions:

8. Communications							
Name	Ch	Function	Rx Freq	Rx Tone	Tx Freq	Tx Tone	Notes
C11 T15	1	COMMAND	151.1675	103.5 (T8)	159.3975	162.2 (T15)	Roop Mtn covers NE side of Branch V
C11 T14	2	COMMAND	151.1675	103.5 (T8)	159.3975	151.4 (T14)	Shaffer Mtn covers SW side of Branch V
CO FIRE	3	COMMAND	154.4450	0.0	154.0100	110.9 (T1)	Tone 1, Shaffer Mtn; Available for Susanville Support / Water Supply Group
VFIRE 25	11	TACTICAL	154.2875	156.7 (T6)	154.2875	156.7 (T6)	May also be used by Susanville Support / Water Supply Group
CDF T23	14	AIR TO GROUND	159.4500	192.8 (T16)	159.4500	192.8 (T16)	
CALCORD	15	MEDICAL	156.0750	156.7 (T6)	156.0750	156.7 (T6)	
GUARD	16	EMERGENCY	168.6250	0.0	168.6250	110.9 (T1)	EMERGENCY USE ONLY

9. Prepared by: Name:	T. BYRD	RESL	
ICS 204	Date/Time: 7/27/2020	2200	Personnel Count: 166

Signature:

NIMS IAP

CONTROLLED UNCLASSIFIED INFORMATION//BASIC

ASSIGNMENT LIST (ICS 204 WF)

CONTROLLED UNCLASSIFIED
INFORMATION/BASIC

1. Incident Name: <p style="text-align: center; font-size: 1.2em;">Hog</p>		2. Operational Period: Date From: 07/28/20 Date To: 07/29/20 Time From: 0700 Time To: 0700				3. Branch <p style="text-align: center; font-size: 1.5em;">IX</p>		Division <p style="text-align: center; font-size: 1.5em;">Q</p>	
4. Operations Personnel:		Operations Section Chief: S. NORMAN		Night Ops: J. OHS		Page 1 of 2		Quebec	
Branch Director: J. PIERCE / J. GAHAGAN (T)		Division/Group Supervisor: J. REYES / J. BAKER (T)		Branch Safety:		Air Attack: S. MCGREGOR			
5. Resources Assigned:		** Resources Below in Bold are 12 Hour **							
Resource Identifier	ALS	LWD	Leader	Personnel	Request #	Hours	Reporting Location		
STC SLU 9341C						0700-0700	DP 90		
STC XSJ 4178C			S. ARGANBRIGHT	18	E-82	0700-0700	DP 90		
T/F XLS 3075			S. HITCHCOCK	21	E-142	0700-0700	DP 90		
CRW T2 C-36			A. HERGERT	20	C-36	0700-1900	DP 90		
CRW T2 C-64			F. PEREZ	20	C-64	0700-1900	DP 90		
CRW T2 C-65			A. TOMTHAK	20	C-65	0700-1900	DP 90		
CRW T2 C-88			T. PORTER	20	C-88	0700-1900	DP 90		
CRW T2 C-96			O. MIRANDA	20	C-96	0700-1900	DP 90		
DOZ PVT E-275			G. HAROLD	1	E-275	0700-0700	DP 90		
DOZ PVT E-276			D. DIAL	2	E-276	0700-0700	DP 90		
WT PVT E-58			M. HAMILTON	2	E-58	0700-0700	DP 90		
WT PVT E-114			J. SHELTON	2	E-114	0700-0700	DP 90		
WT PVT E-249			T. GARR	2	E-249	0700-0700	DP 90		
WT PVT E-333			D. WEAVER	2	E-333	0700-0700	DP 90		
WT PVT E-337			C. SKINNER	1	E-337	0700-0700	DP 90		
FALM O-381			K. CYRUS	2	O-381	0700-1900	DP 90		
FALM O-387			S. VOORHES	2	O-387	0700-1900	DP 90		
FELB BOURGAULT (T)			L. BOURGAULT	1	O-350	0700-1900	DP 90		
6. Work Assignments: 100% Mop Up. Pull hose as needed. Backhaul all trash.									
7. Special Instructions:									
8. Communications									
Name	Ch	Function	Rx Freq	Rx Tone	Tx Freq	Tx Tone	Notes		
C11 T15	1	COMMAND	151.1675	103.5 (T8)	159.3975	162.2 (T15)	Roop Mtn covers NE side of Branch V		
C11 T14	2	COMMAND	151.1675	103.5 (T8)	159.3975	151.4 (T14)	Shaffer Mtn covers SW side of Branch V		
CO FIRE	3	COMMAND	154.4450	0.0	154.0100	110.9 (T1)	Tone 1, Shaffer Mtn; Available for Susanville Support / Water Supply Group		
VFIRE 26	12	TACTICAL	154.3025	156.7 (T6)	154.3025	156.7 (T6)			
CDF T23	14	AIR TO GROUND	159.4500	192.8 (T16)	159.4500	192.8 (T16)			
CALCORD	15	MEDICAL	156.0750	156.7 (T6)	156.0750	156.7 (T6)			
GUARD	16	EMERGENCY	168.6250	0.0	168.6250	110.9 (T1)	EMERGENCY USE ONLY		
9. Prepared by: Name:		T. BYRD			RESL				
Signature:		Date/Time: 7/27/2020 2200			Personnel Count: 156				
ICS 204									

NIMS IAP

CONTROLLED UNCLASSIFIED INFORMATION/BASIC

ASSIGNMENT LIST (ICS 204 WF)

CONTROLLED UNCLASSIFIED
INFORMATION//BASIC

1. Incident Name: <p style="text-align: center; font-size: 1.2em;">Hog</p>	2. Operational Period: Date From: 07/28/20 Date To: 07/29/20 Time From: 0700 Time To: 0700	3. Branch Division <p style="text-align: center; font-size: 1.5em;">IX R</p> <p style="text-align: center;">Page 1 of 1 Romeo</p>
---	---	--

4. Operations Personnel:	
Operations Section Chief: S. NORMAN	Night Ops: J. OHS
Branch Director: J. PIERCE / J. GAHAGAN (T)	Branch Safety:
Division/Group Supervisor: G. ENGEN / B. WRIGHT (T)	Air Attack: S. MCGREGOR

5. Resources Assigned:		** Resources Below in Bold are 12 Hour **					
Resource Identifier	ALS	LWD	Leader	Personnel	Request #	Hours	Reporting Location
STB XTE 3250B			S. BLAKE	17	E-391	0700-0700	DP 90
CRW T2 C-38			J. FOWARD	20	C-38	0700-1900	DP 90
CRW T2 C-75			H. ROCHA	20	C-75	0700-1900	DP 90
CRW T2 C-78			L. RASCH	20	C-78	0700-1900	DP 90
CRW T2 C-81			J. PARRAS	20	C-81	0700-1900	DP 90
WT PVT E-56			L. CARLSON	2	E-56	0700-0700	DP 90
WT PVT E-113			E. LEEMAN	2	E-113	0700-0700	DP 90
WT PVT E-167				2	E-167	0700-0700	DP 90
FEMP COOPER			G. COOPER	1	O-231	0700-0700	DP 90
FEMT BRONNEKE			J. BRONNEKE	1	O-157	0700-0700	DP 90

6. Work Assignments:
 100% Mop Up.
 Pull hose as needed.
 Backhaul all trash.

7. Special Instructions:

8. Communications							
Name	Ch	Function	Rx Freq	Rx Tone	Tx Freq	Tx Tone	Notes
C11 T15	1	COMMAND	151.1675	103.5 (T8)	159.3975	162.2 (T15)	Roop Mtn covers NE side of Branch V
C11 T14	2	COMMAND	151.1675	103.5 (T8)	159.3975	151.4 (T14)	Shaffer Mtn covers SW side of Branch V
CO FIRE	3	COMMAND	154.4450	0.0	154.0100	110.9 (T1)	Tone 1, Shaffer Mtn; Available for Susanville Support / Water Supply Group
VFIRE 26	12	TACTICAL	154.3025	156.7 (T6)	154.3025	156.7 (T6)	
CDF T23	14	AIR TO GROUND	159.4500	192.8 (T16)	159.4500	192.8 (T16)	
CALCORD	15	MEDICAL	156.0750	156.7 (T6)	156.0750	156.7 (T6)	
GUARD	16	EMERGENCY	168.6250	0.0	168.6250	110.9 (T1)	EMERGENCY USE ONLY

9. Prepared by: Name:	T. BYRD	RESL	
ICS 204	Date/Time: 7/27/2020	2200	Signature:
			Personnel Count: 105

ASSIGNMENT LIST (ICS 204 WF)

CONTROLLED UNCLASSIFIED
INFORMATION/BASIC

1. Incident Name: <p style="text-align: center; font-size: 1.2em;">Hog</p>		2. Operational Period: Date From: 07/28/20 Date To: 07/29/20 Time From: 0700 Time To: 0700				3. Branch Division <p style="text-align: center; font-size: 1.2em;">FSR</p>	
4. Operations Personnel:						Page 1 of 2	
Operations Section Chief: S. NORMAN				Night Ops: J. OHS			
Branch Director: I. HOUSER (12 HR)				Branch Safety:			
Division/Group Supervisor:				Air Attack: S. MCGREGOR			
5. Resources Assigned:		** Resources Below in Bold are 12 Hour **					
Resource Identifier	ALS	LWD	Leader	Personnel	Request #	Hours	Reporting Location
CRW T2 C-61			L. CERVANCEZ	20	C-61	0700-1900	ICP
CRW T2 C-66			C. OROZCO	20	C-66	0700-1900	ICP
DOZ PVT E-31			M. KIRACK	1	E-31	0700-1900	ICP
DOZ PVT E-91			T. OFERALL	1	E-91	0700-1900	ICP
DOZ PVT E-100			S. MAYWARD	2	E-100	0700-1900	ICP
DOZ PVT E-101			T. PARKS	1	E-101	0700-1900	ICP
DOZ PVT E-277			B. FORKNER	2	E-277	0700-1900	ICP
DOZ PVT E-279			S. MOORE	2	E-279	0700-1900	ICP
WT PVT E-32			R. POTTER	2	E-32	0700-1900	ICP
WT PVT E-335			B. JOHNSON	1	E-335	0700-1900	ICP
WT PVT E-336			J. MILLER	1	E-336	0700-1900	ICP
EXC PVT E-424			R. KOEHLER	2	E-424	0700-1900	ICP
EXC PVT E-430			M. KIRACK	2	E-430	0700-1900	ICP
EXC PVT E-444			I. POTTER	2	E-444	0700-1900	ICP
EXC PVT E-445			J. BRITTEN	2	E-445	0700-1900	ICP
EXC PVT E-449			M. GOODEN	2	E-449	0700-1900	ICP
CHIP PVT E-315			M. BLAKMAN	1	E-315	0700-1900	ICP
CHIP PVT E-425			C. HAPTONSTALL	2	E-425	0700-1900	ICP
6. Work Assignments: Refer to READ on Lassen National Forest. Follow Fire Suppression Repair Plan. Coordinate with HEQB at end of shift.							
7. Special Instructions:							
8. Communications							
Name	Ch	Function	Rx Freq	Rx Tone	Tx Freq	Tx Tone	Notes
C11 T15	1	COMMAND	151.1675	103.5 (T8)	159.3975	162.2 (T15)	Roop Mtn covers NE side of Branch V
C11 T14	2	COMMAND	151.1675	103.5 (T8)	159.3975	151.4 (T14)	Shaffer Mtn covers SW side of Branch V
CO FIRE	3	COMMAND	154.4450	0.0	154.0100	110.9 (T1)	Tone 1, Shaffer Mtn; Available for Susanville Support / Water Supply Group
CDF T29	4	TACTICAL	151.3475	192.8 (T16)	151.3475	192.8 (T16)	Fire Suppression Repair (FSR)
CDF T23	14	AIR TO GROUND	159.4500	192.8 (T16)	159.4500	192.8 (T16)	
CALCORD	15	MEDICAL	156.0750	156.7 (T6)	156.0750	156.7 (T6)	
GUARD	16	EMERGENCY	168.6250	0.0	168.6250	110.9 (T1)	EMERGENCY USE ONLY
9. Prepared by: Name:		T. BYRD		RESL		Signature:	
ICS 204		Date/Time: 7/27/2020		2200		Personnel Count: 66	

NIMS IAP

CONTROLLED UNCLASSIFIED INFORMATION/BASIC

ASSIGNMENT LIST (ICS 204 WF)

CONTROLLED UNCLASSIFIED
INFORMATION//BASIC

1. Incident Name: <p style="text-align: center; font-size: 1.2em;">Hog</p>	2. Operational Period: Date From: 07/28/20 Date To: 07/29/20 Time From: 0700 Time To: 0700	3. Branch Division <p style="text-align: center; font-size: 1.2em;">FSR</p>
--	---	--

Page 2 of 2

4. Operations Personnel:	
Operations Section Chief: S. NORMAN	Night Ops: J. OHS
Branch Director: I. HOUSER (12 HR)	Branch Safety:
Division/Group Supervisor:	Air Attack: S. MCGREGOR

5. Resources Assigned:		** Resources Below in Bold are 12 Hour **					
Resource Identifier	ALS	LWD	Leader	Personnel	Request #	Hours	Reporting Location
CHIP PVT E-427			H. FERGUSON	2	E-427	0700-1900	ICP
CHIP PVT E-429			J. FIKE	2	E-429	0700-1900	ICP
HEQB DRUMMOND			J. DRUMMOND	1	O-55	0700-1900	ICP
HEQB SILVA			J. SILVA	1	O-62	0700-1900	ICP
HEQB FITZGERALD (T)			T. FITZGERALD	1	O-63	0700-1900	ICP
HEQB T. ROBINSON			T. ROBINSON	1	O-215	0700-1900	ICP
HEQB KLOSEK			M. GOODEN	1	E-449	0700-1900	ICP
HEQB ANKLAM (T)			B. ANKLAM	1	O-341	0700-1900	ICP
HEQB LEONARD (T)			K. LEONARD	1	O-344	0700-1900	ICP
HEQB HENRY (T)			J. HENRY	1	O-497	0700-1900	ICP
HEQB FARNSWORTH			J. FARNSWORTH	1	O-499	0700-1900	ICP
HEQB LINGEN			D. LINGEN	1	O-218	0700-1900	ICP
HEQB GOLDIE			N. GOLDIE	1	O-60	0700-1900	ICP
READ IMMEKER			D. IMMEKER	1	O-15	0700-1900	ICP
READ MARTIN			J. MARTIN	1	O-16	0700-1900	ICP
READ FARRIS			P. FARRIS	1	O-33	0700-1900	ICP
READ MERREFIELD			J. MERREFIELD	1	O-490	0700-1900	ICP
ARCH ALLEN			T. ALLEN	1	O-501	0700-1900	ICP
ARCH SEGROVES			A. SEGROVES	1	O-500	0700-1900	ICP

6. Work Assignments:
Refer to READ on Lassen National Forest.
Follow Fire Suppression Repair Plan.
Coordinate with HEQB at end of shift.

7. Special Instructions:

8. Communications							
Name	Ch	Function	Rx Freq	Rx Tone	Tx Freq	Tx Tone	Notes
C11 T15	1	COMMAND	151.1675	103.5 (T8)	159.3975	162.2 (T15)	Roop Mtn covers NE side of Branch V
C11 T14	2	COMMAND	151.1675	103.5 (T8)	159.3975	151.4 (T14)	Shaffer Mtn covers SW side of Branch V
CO FIRE	3	COMMAND	154.4450	0.0	154.0100	110.9 (T1)	Tone 1, Shaffer Mtn; Available for Susanville Support / Water Supply Group
CDF T29	4	TACTICAL	151.3475	192.8 (T16)	151.3475	192.8 (T16)	Fire Suppression Repair (FSR)
CDF T23	14	AIR TO GROUND	159.4500	192.8 (T16)	159.4500	192.8 (T16)	
CALCORD	15	MEDICAL	156.0750	156.7 (T6)	156.0750	156.7 (T6)	
GUARD	16	EMERGENCY	168.6250	0.0	168.6250	110.9 (T1)	EMERGENCY USE ONLY

9. Prepared by: Name:	T. BYRD	RESL	
ICS 204	Date/Time: 7/27/2020	2200	Personnel Count: 21

Signature:

NIMS IAP


CONTROLLED UNCLASSIFIED INFORMATION//BASIC

ICS 205 - INCIDENT RADIO COMMUNICATIONS PLAN

1. Incident Name: Hog
Incident Channels
2. Date/Time Prepared Date: 07/27/2020 Time: 1630
3. Operational Period: Date From: 07/28/20 Date To: 07/29/20
 Time From: 0700 Time To: 0700

4. Communications									
Ch#	Function	Name	Assigned To	Rx Freq	Rx Tone	Tx Freq	Tx Tone	Notes	
1	COMMAND	C11 T15	ALL DIVS	151.1675	103.5 (T8)	159.3975	162.2 (T15)	Roop Mtn covers NE side of Branch V	
2	COMMAND	C11 T14	ALL DIVS	151.1675	103.5 (T8)	159.3975	151.4 (T14)	Shaffer Mtn covers SW side of Branch V	
3	COMMAND	CO FIRE	UNASSIGNED	154.4450	0.0	154.0100	110.9 (T1)	Tone 1, Shaffer Mtn; Available for Susanville Support / Water Supply Group	
4	TACTICAL	CDF T29	DIV A / N CONT. / FSR	151.3475	192.8 (T16)	151.3475	192.8 (T16)	Fire Suppression Repair (FSR)	
5	TACTICAL	CDF T30	DIV F / G	151.3925	192.8 (T16)	151.3925	192.8 (T16)		
6	TACTICAL	CDF T31	DIV C	159.3825	192.8 (T16)	159.3825	192.8 (T16)		
7	TACTICAL	VFIRE 21	UNASSIGNED	154.2800	156.7 (T6)	154.2800	156.7 (T6)	Available for Susanville Support / Water Supply Group	
8	TACTICAL	VFIRE 22	UNASSIGNED	154.2650	156.7 (T6)	154.2650	156.7 (T6)	Available for Susanville Support / Water Supply Group	
9	TACTICAL	VFIRE 23	UNASSIGNED	154.2950	156.7 (T6)	154.2950	156.7 (T6)	Available for Susanville Support / Water Supply Group	
10	TACTICAL	VFIRE 24	DIV J / L	154.2725	156.7 (T6)	154.2725	156.7 (T6)	May also be used by Susanville Support / Water Supply Group	
11	TACTICAL	VFIRE 25	DIV O / Staging	154.2875	156.7 (T6)	154.2875	156.7 (T6)	May also be used by Susanville Support / Water Supply Group	
12	TACTICAL	VFIRE 26	DIV Q / R / WTR SPLY	154.3025	156.7 (T6)	154.3025	156.7 (T6)		
13	TACTICAL	VTAC 14	DIV D / E	159.4725	156.7 (T6)	159.4725	156.7 (T6)	VTAC14 also used for morning briefing	
14	AIR TO GROUND	CDF T23	ALL DIVS	159.4500	192.8 (T16)	159.4500	192.8 (T16)		
15	MEDICAL	CALCORD	ALL DIVS	156.0750	156.7 (T6)	156.0750	156.7 (T6)		
16	EMERGENCY	GUARD	ALL DIVS	168.6250	0.0	168.6250	110.9 (T1)	EMERGENCY USE ONLY	
17									
18									
19									
20	EMERGENCY	GUARD	ALL DIVS	168.6250	0.0	168.6250	110.9 (T1)	EMERGENCY USE ONLY	

5. Special Instructions

6. Prepared by (Communications Unit Leader): Name: Kyle Johnson
 Signature: 
 NIMS IAP Date/Time: 07/27/2020 2000

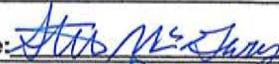



CAL FIRE INCIDENT
MANAGEMENT TEAM 3



**RADIO BRIEFING
WILL BE BROADCAST ON
VTAC 14**

In readiness is all

1. Incident Name: <p style="text-align: center;">Hog</p>		2. Operational Period: Date From: 7/28/20 Date To: 7/29/20 Time From: 0700 Time To: 0700					
3. Medical Aid Stations:							
Name	Location	Contact Number/Freq	Paramedics				
CAL MAT	ICP	916-664-2757/ Hog Coms	Yes				
4. Transportation (indicate air or ground):							
Ambulance Service	Location	Contact Number	Level of Service				
Plumas 12 (ground)	DP 91	530-249-8483/ Hog Coms	ALS				
Mountain Medics 1 (ground)	DP 50	530-276-4810/ Hog Coms	ALS				
Guard 841 (24hr rescue/hoist)	Fall River Helibase	Hog Coms	ALS				
SEMSA Air 1 (air)	Susanville Airport	866-297-1352/ Hog Coms	ALS				
5. Hospitals:							
Hospital Name	Address,	Contact Number(s)/ Frequency	Travel Time		Trauma Center	Burn Center	Helipad
	Lat & Long Helipad		Air	Ground			
Banner Lassen Hospital	1800 Spring Ridge Dr Susanville, CA 96130 Lat/Long N 40' 26.27, W 120' 37.67	(530) 252-2096	5 min	10 min	Level 3	<input type="checkbox"/>	<input checked="" type="checkbox"/>
Dignity Health Mercy Medical Center Redding	2175 Rosaline Ave Redding, CA 96001 Lat/Long: N 40' 34.33, W 122' 23.80	(530) 225-7201	39 min	2 hr	Level 2	<input type="checkbox"/>	<input checked="" type="checkbox"/>
UC Davis Medical Center	2315 Stockton Blvd Sacramento, CA 95817 Lat/Long N 38' 33.28, W 121' 27.35	(916) 734-5669	1hr	3 hr	Level 1	<input checked="" type="checkbox"/>	<input checked="" type="checkbox"/>
Renown Regional Medical Center	1155 Mill Street Reno, NV 89502 Lat/Long: N 39' 31.52, W 119' 47.74	(775) 982-2005	32 min	2 hr	Level 2	<input type="checkbox"/>	<input checked="" type="checkbox"/>
6. Special Medical Emergency Procedures							
Line Emergency Crew Supervisor will contact Division Supervisor with patient complaint/condition and location. - Division Group Supervisor Contacts: 1. Closest EMS resource 2. Communications Unit - Communications Unit Contacts: 1. Ground or Air ambulance as requested. 2. Operations 3. Safety 4. Medical Unit - Division Supervisor or designee will serve as point of contact and run medical emergency on assigned channel. 1. A pre-assigned tactical frequency (i.e. CALCORD) should be used for IWI and only for duration of the emergency. - Communications Unit will clear the Command channel for emergency traffic as needed for duration of the need.				Injury Reporting Procedures Nature of Injury: _____ Location of Patient: _____ Point of Contact: _____ Transportation Requested by: Air _____ Ground _____ Point of Pick-Up: _____ Lat: _____ Long: _____ Patient Unit ID: _____ Is an EMT with Patient: Yes _____ No _____ Age: _____ Sex: Male _____ Female _____ All Emergencies - Secure the area and identified witnesses for later investigation. Keep accurate log of events.			
Camp Emergency Contact Medical Unit with patient complaint/condition and location. Medical staff will respond to stabilize the patient. - Medical Unit contacts 1. Communications 2. Safety 3. Logistics 4. Operations 5. Crew Supervisor 6. Comp/Claims							
<input type="checkbox"/> Check box if aviation assets are utilized for rescue. If assets are used, coordinate with Air Operations.							
7. Prepared by (Medical Unit Leader): <p style="text-align: center;">S. McGary</p>				Signature: 			
8. Approved by (Safety Officer): <p style="text-align: center;">D. SARGENTI / D. BROCKMAN (T)</p>				Signature: 			
ICS 206		NIMS IAP		Date/Time: 7/27/20 2000			



CAL FIRE INCIDENT
MANAGEMENT TEAM 3



TRAINING SPECIALIST MESSAGE

TRAINEES:

In order to receive documented credit for your training assignment, you must register with the TNSP prior to starting the demob process.

TRAINERS/EVALUATORS:

If as much work as possible has been completed in the position task book, you are strongly encouraged to take advantage of your time in camp and conduct the training close-out with the TNSP. It is not necessary to wait until you demob.

Bring the following with you to the "exit interview"

- Your properly initiated Position Task Book
- Completed and signed ICS 225 Performance Evaluation
- Completed and signed Evaluation Record

Justin Voyson TNSP 661-547-8629

A blue ink handwritten signature, likely of Justin Voyson.

In readiness is all



INCIDENT MANAGEMENT TEAM 3



DEMOBILIZATION MESSAGE Hog Incident CA-LMU-003874

We appreciate your efforts during this incident and want to make sure that we get you to your next destination safely and efficiently. When we begin demobilization, a Tentative Demobilization List will be posted in several places around base camp, including the briefing area and the eating area. If you are on this list, please adhere to the following:

SHOW UP AT THE DESIGNATED TIME

- Show up at the designated time.
- Do not show up early.
- Do not show up late.

A demobilization schedule has been prepared in careful coordination with all essential demobilization functions. Not following the demobilization schedule can have significant negative impacts on the Demobilization Unit staff and all other resources scheduled for demobilization. We do not want you or any other resources to have unnecessary delays. Please adhere to your scheduled demobilization time.

BE PREPARED FOR A RE-ASSIGNMENT

There may be other incidents in the state that are in need of resources. There is a possibility that some of the resources released from this incident will be immediately assigned to another one. Please make sure you are properly supplied, rested, and nourished while waiting for your designated demobilization time.

BE THOROUGH AND EFFICIENT

Demobilization begins and ends at the Demobilization Unit. Please follow the instructions given to you when starting the demobilization process. Returning to the Demobilization Unit with a complete and accurate Demobilization Check-Out (ICS-221) form will help prevent any unnecessary delays and ensure you are shown as available for future assignments. Unforeseen delays can occur during the demobilization process, such as mechanical issues discovered while at Ground Support. Plan to visit the Time Unit towards the end of the demobilization process in order to provide an accurate accounting of your time.

Prepared by DMOB Eric Campbell

A handwritten signature in blue ink, appearing to read "Eric Campbell".



PUBLIC INFORMATION SECTION



Incident Information Line: (530) 282-5714
Incident Media Line: (530) 282-5714

Incident Updates:
www.fire.ca.gov/current_incidents

STATUS	
Incident Start Date: 7/18/2020	Incident Start Time: 3:30 PM
Cause: Under Investigation	Acres:
Containment:	Total Personnel:

MEDIA – The California State Penal Code Section 409.5(d) allows the news media to enter scenes of disaster, riot or civil disturbance. Properly identified members of the news media should not be restricted from entering locations specified within the code. However, this does not include crime scenes, private property and does not imply that the news media may interfere with incident operations while they are in the areas of concern. More information can be found [here](#).

CAL FIRE SOCIAL MEDIA POLICY – When assigned to a CAL FIRE incident, you will adhere to the CAL FIRE Social Media Policy, Section 0691. You can find further information about the CAL FIRE Social Media Policy [here](#).

PHOTOGRAPHS AND VIDEOS OF INCIDENT – We are in a new era of media. Media no longer means news/broadcast industry, but now refers to anyone that has the capability to shoot video, photographs and post them onto social media sites in a matter of minutes. Unfortunately, we have seen some instances of photographs or videos that have depicted unsafe, unprofessional or embarrassing circumstances which are a serious breach of ethics. When this happens, it reflects poorly on all that are attached to this incident. Posting an inappropriate video, photo or blog comment could expose oneself to unwanted ramifications. It may be unsafe to shoot photos or video and a firefighter who is concentrating on a camera loses their situational awareness.

The Public Information Office would like copies of the video and pictures that you safely took while not in an emergency situation, fire suppression activity or in an overhead assignment. Bring your video and pictures to the Public Information trailer; they will be reviewed and possibly uploaded to our many CAL FIRE social media sites. Remember, we don't want photographs or videos that depict unsafe, unprofessional or embarrassing circumstances, which are a serious breach of ethics.

LOST AND FOUND – The Information Section will manage lost and found items for the incident. If you have lost an item please leave your contact information and what you have lost at the Information Section. If you have found an item on the incident, bring the item to the Information Section with your contact information as well. All items left in Lost and Found will be turned over to the local CAL FIRE Shasta Unit.

MAIL SERVICE – The Information Section can assist you with sending and receiving mail.

Prepared by Dan Olson



FINANCE SECTION MESSAGE



CAL FIRE staff; please ensure you start your eFC-33s with the Personnel Time Recorder.

Please make sure hired equipment shift tickets are completed for all private vendors and dropped off in the Time Unit by agency personnel / line supervisors only, as well as EERAs.

Please report all injuries and suppression damage to the Comp / Claims Unit, no matter how minor.

The Finance Section is located in the grass area across from briefing.

Federal and Contract resources need to check-in with the Federal Time Unit.

OES is located in the back of fairgrounds.

ROGER RAINES, FSC1
TERRY EASTWOOD, DEP. FSC1

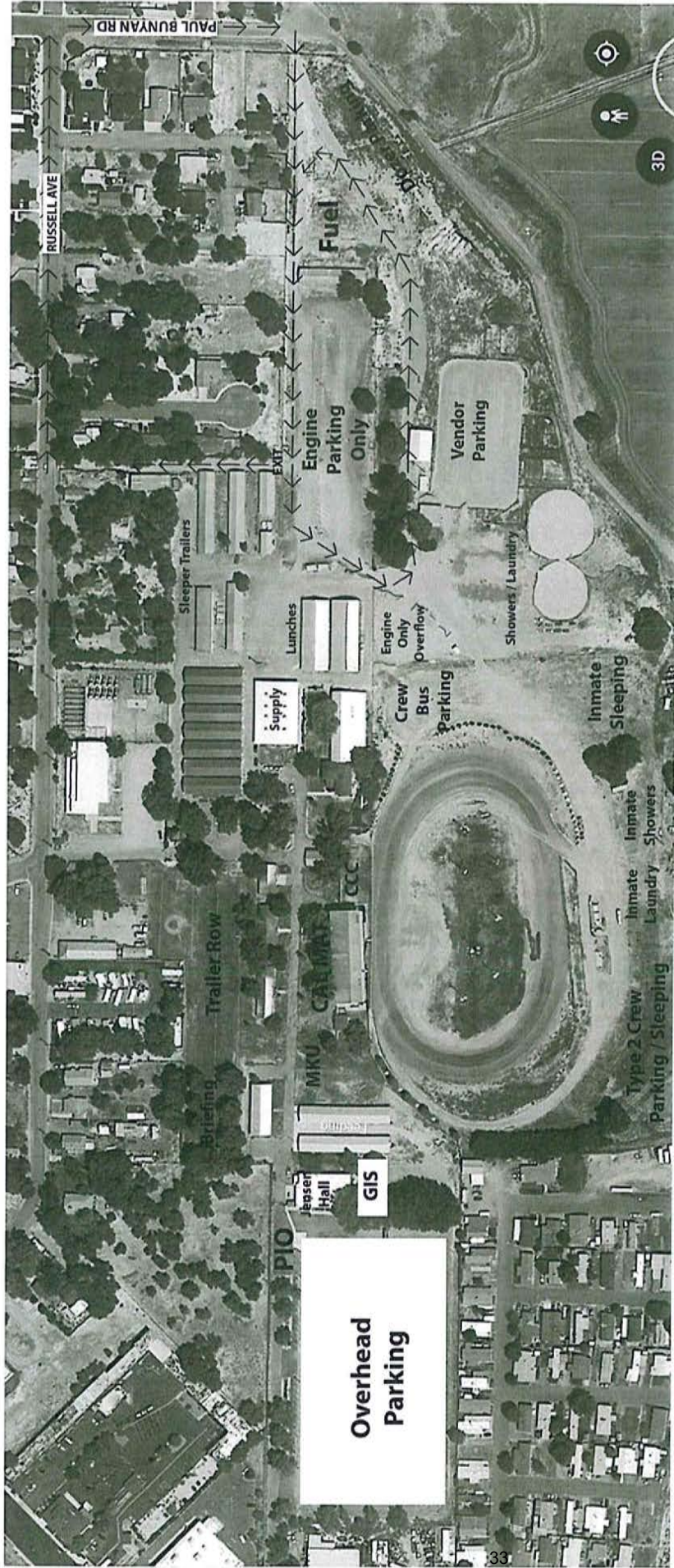
A handwritten signature in blue ink, appearing to be "Roger Raines", written over the printed name.

Shift Ticket Example

EMERGENCY SHIFT TICKET and EVALUATION FORM					Contractor Name	
The responsible Government Officer will complete this form each shift					Fireline Builders	
Incident or Project Name HOG		Incident Number CA-LMU-003874	Request Number E # Here		Operator #1 Bob Smith	Operator #2 Jeff Smith
Agreement Number Obtain from vendor's agreement					Operator Furnished By: <input checked="" type="checkbox"/> Contractor <input type="checkbox"/> Government	
Equipment Make CAT		Equipment Model / Type D6N, Type II E			Operating Supplies Furnished By: <input checked="" type="checkbox"/> Contractor <input type="checkbox"/> Government	
Serial Number 6LN3344		Licence Number			Equipment Status <input checked="" type="checkbox"/> Inspected <input checked="" type="checkbox"/> Under Agreement	
Equipment Use					Released by Government <input type="checkbox"/>	
(Circle) Hours / Days / Miles					Withdrawn by Contractor <input type="checkbox"/>	
Date Mo / Day	Start	Stop	Work	Assignment	Remarks/Comments ** NO DAMAGE / NO CLAIMS	
7/28	0700	2400	17	Division B		
7/29	0001	0700	7	Division B		
Vendor Rating					Govt. Rep. Name and Position - PRINT Mike Weber Div. A	
Poor* Avg. Good Exc. N/A					Govt. Rep. Signature <i>Mike Weber</i>	
Met Performance Expectations					Contractor Signature <i>Bob Smith</i>	
Equipment in Safe Working Condition					Date 07/20/20	
Operator Skill Level					Time 0800	
Operates Safely					Date 07/20/20	
Operator's Cooperation Level					Time 0800	
Overall Performance					Calfire 297 (Rev 3-2011)	
* NOTE: Any rating of POOR requires an explanation in Comment Section.						
**Final evaluation or for more documentation, use an ICS Form 230 or equivalent.						
Pink - Finance		Blue - Home Unit HE Coordinator		Yellow - Vendor		White - Govt Representative

EMERGENCY SHIFT TICKET and EVALUATION FORM					Contractor Name	
The responsible Government Officer will complete this form each shift					Fireline Builders	
Incident or Project Name Hog		Incident Number CA-LMU-003874	Request Number E # Here		Operator #1 Bob Smith	Operator #2
Agreement Number Obtain from vendor's agreement					Operator Furnished By: <input checked="" type="checkbox"/> Contractor <input type="checkbox"/> Government	
Equipment Make CAT		Equipment Model / Type D6N, Type II E			Operating Supplies Furnished By: <input checked="" type="checkbox"/> Contractor <input type="checkbox"/> Government	
Serial Number 6LN3344		Licence Number			Equipment Status <input checked="" type="checkbox"/> Inspected <input checked="" type="checkbox"/> Under Agreement	
Equipment Use					Released by Government <input type="checkbox"/>	
(Circle) Hours / Days / Miles					Withdrawn by Contractor <input type="checkbox"/>	
Date Mo / Day	Start	Stop	Work	Assignment	Remarks/Comments ** NO DAMAGE / NO CLAIMS	
7/28	0001	0700	7	Off Shift		
7/28	0701	1900	12	Division B		
7/28	1901	2400	5	Off Shift		
Vendor Rating					Govt. Rep. Name and Position - PRINT Mike Weber Div. A	
Poor* Avg. Good Exc. N/A					Govt. Rep. Signature <i>Mike Weber</i>	
Met Performance Expectations					Contractor Signature <i>Bob Smith</i>	
Equipment in Safe Working Condition					Date 07/20/20	
Operator Skill Level					Time 0600	
Operates Safely					Date 07/20/20	
Operator's Cooperation Level					Time 0600	
Overall Performance					Calfire 297 (Rev 3-2011)	
* NOTE: Any rating of POOR requires an explanation in Comment Section.						
**Final evaluation or for more documentation, use an ICS Form 230 or equivalent.						
Pink - Finance		Blue - Home Unit HE Coordinator		Yellow - Vendor		White - Govt Representative

Incident Base Map- Lassen County Fairgrounds



Trailer Row

⑨

⑧

⑩

⑪

⑦

①

⑥

②

③

④

⑤

Trailer Row

1. Federal Personnel Time
2. Hotels and Accommodations
3. Time Section Chief/ Equipment Time
4. Incinet
5. Time Unit/ Calfire Time
6. Facilities/ Logistics/ Ordering
7. Finance Section Chief/ Comp Claims
8. Safety/ Operations
9. Incident Commander
10. Law Enforcement Liaison
11. Finance

Jensen Hall

- Situation
- Resources
- Plans
- Demob
- Check In

GROUND SUPPORT
LMU Headquarters, 697 CA-36, Susanville, CA 96130



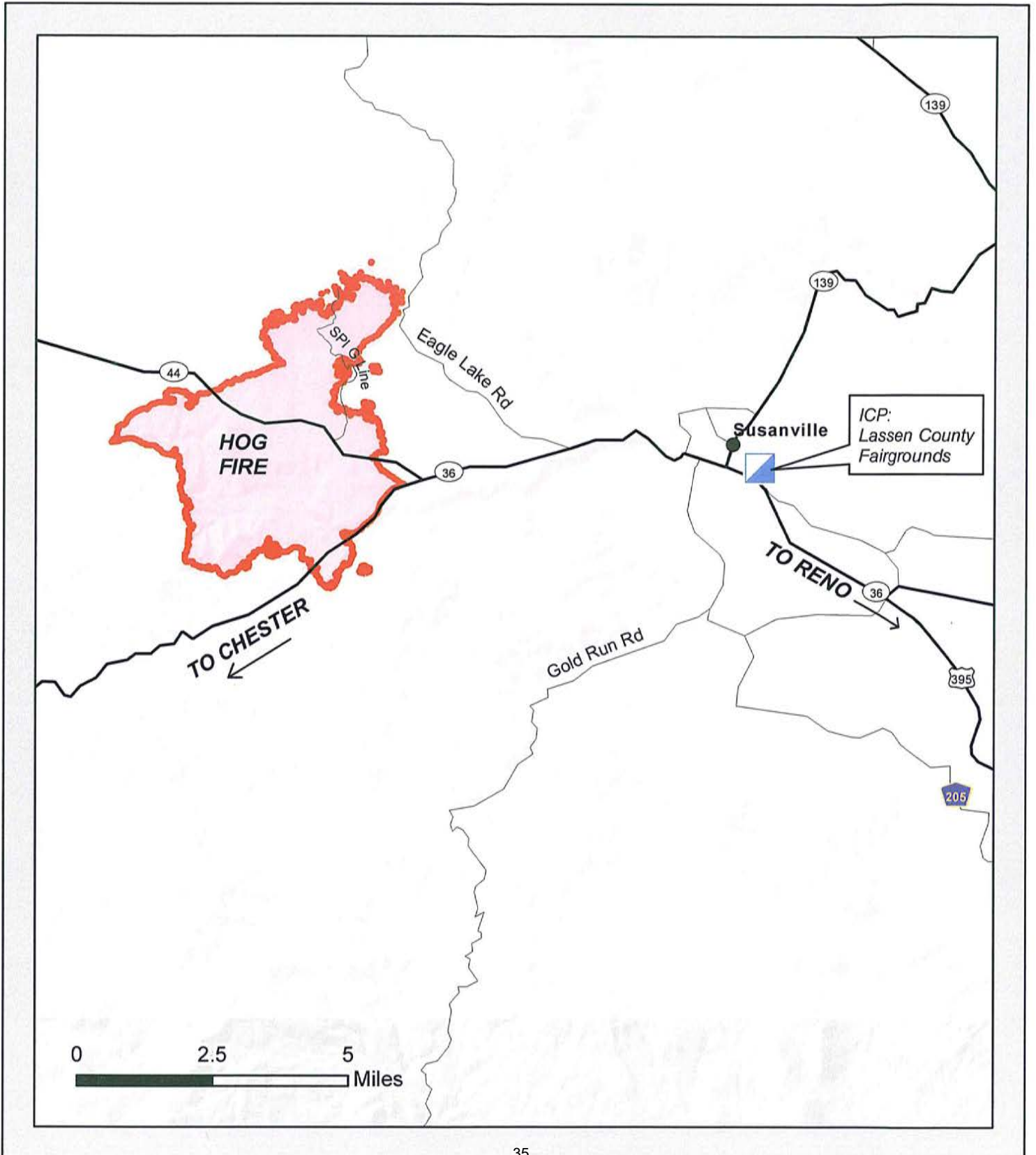
For after-hours mechanical needs, call 925-532-5437.



Travel Map

HOG INCIDENT

CA-LMU-003874



THIS PAGE INTENTIONALLY BLANK

