

# INCIDENT ACTION PLAN

## HOG INCIDENT

CA-LMU-003874

Wednesday



### OPERATIONAL PERIOD

7/29/2020 0700  
to  
7/30/2020 0700





# INCIDENT OBJECTIVES (ICS 202)

<b>1. Incident Name:</b> <p style="text-align: center;">Hog</p>	<b>2. Operational Period:</b>	Date From: 7/29/2020	Date To: 7/30/2020
		Time From: 0700	Time To: 0700

**3. Objective(s):**

**Strategic Objectives**

A full suppression strategy is to be implemented on the Hog Incident. Values at risk associated to the incident include human safety, private property and associated improvements, electrical power infrastructure, and cultural values. Minimize acres burned on all lands by utilizing effective and efficient strategies and tactics while maintaining safety first.

**Leaders Intent**

Work effectively with cooperative partners towards a common goal of protecting values in a safe and efficient manner. All incident assigned personnel should be prepared to take the appropriate actions regarding:

- Professional behavior, conduct timely / effective communications
- Personal safety and safety of others, including driving slowly, safely and defensively Implementation of tactics that offer a high probability of success
- Manage fatigue by taking breaks and maintaining work rest cycles
- All line supervision personnel including crew and striketeam leaders must attend the morning Operational Briefing

**Management Objectives**

- Fight fire aggressively while maintaining safe work practices to minimize threats to the public and emergency responders, all actions and efforts will focus on safe guarding the citizens and resources of Lassen County
- Ensure COVID-19 precautions and best practices are met always
- Minimize damage to structures, private property and other improvements in the fire area
- Protect natural, cultural, heritage resources
- Continue to foster and maintain positive relationships with all local cooperators and stakeholders
- Provide timely and accurate incident information
- Maintain fiscal accountability keeping costs commensurate with values at risk

**Control Objectives**

- Keep the fire East of the line from Diamond Mountain to Chaparral Hill to Peg Leg Mt. to Mike's Lodge
- Keep the fire South of Eagle Lake Summit to Bridge Creek Springs Road
- Keep the fire West of D Line
- Keep the fire North of Diamond Mountain to Gold Run Road

**General Situational Awareness**

Steep and rugged terrain, critically dry and receptive fuel beds, active area for fire history and drought stressed trees.

**Stop, Think, Organize, Proceed**

**5. Site Safety Plan Required?** Yes  No


**Approved Site Safety Plan(s) Located at:**

**6. Incident Action Plan**

<input checked="" type="checkbox"/> ICS 203	<input checked="" type="checkbox"/> ICS 215A	<input checked="" type="checkbox"/> COVID-19 Checklist	<input checked="" type="checkbox"/> Ground Support Map
<input checked="" type="checkbox"/> ICS 204	<input checked="" type="checkbox"/> ICS 220	<input checked="" type="checkbox"/> Training Message	<input checked="" type="checkbox"/> Facilities Map
<input checked="" type="checkbox"/> ICS 205	<input checked="" type="checkbox"/> Weather Forecast	<input checked="" type="checkbox"/> PIO Message	<input checked="" type="checkbox"/> Travel Map
<input checked="" type="checkbox"/> ICS 206	<input checked="" type="checkbox"/> Fire Behavior	<input checked="" type="checkbox"/> Finance Message	<input type="checkbox"/>
<input checked="" type="checkbox"/> ICS 208	<input checked="" type="checkbox"/> Safety Message	<input checked="" type="checkbox"/> Shift Ticket Example	<input checked="" type="checkbox"/> ICS 214

<b>7. Prepared By:</b> S. DEBENEDET	Position/Title: PSC	Signature:	
<b>8. Approved by Incident Commander:</b>	B. SEE	Signature:	

## ORGANIZATION ASSIGNMENT LIST (ICS 203)

<b>1. Incident Name:</b> Hog		<b>2. Operational Period: Date From:</b> 7/29/2020		<b>Date To:</b> 7/30/2020	
		<b>Time From:</b> 0700		<b>Time To:</b> 0700	
<b>3. Incident Commander(s) and Command Staff:</b>			<b>7. Operation Section:</b>		
IC/UC's	B. SEE	Operations	S. NORMAN / A. TURNER (T)		
Deputy	B. FARIAS / K. BOHALL (T) / G. BELYEA (T)	Deputy Operations	M. BRUNTON		
Safety Officer	D. SARGENTI / D. BROCKMAN	Night Ops	J. OHS		
Information Officer	D. OLSON / B. MERCADO (T)	Staging Area			
Liaison Officer	M. SMITH / J. DAPPER (T) / M. WELLS (CHP)	<b>Branch</b>	<b>I</b>	<b>J. HEGGIE</b>	
<b>4. Agency/Organization Representatives:</b>		Division/Group	A	K. MANCEBO (12 HR)	
Agency/Organization	Name	Division/Group	C	Z. HOLLISTER (12 HR)	
CALFIRE LMU Line Officer	L. CALDWELL	Division/Group	D / E	K. TAGLIO / D. JONES (12 HR)	
USFS Agency Rep	P. MARTENS	Division/Group			
USFS Agency Admin	B. DRAKE	Division/Group			
Cal OES	K. BAILEY	<b>Branch</b>	<b>V</b>	<b>G. DEGRAFFENREID (12 HR)</b>	
BLM Admin	E. RYAN	Division/Group	F / G	J. READ (12 HR)	
CHP	LT. A. POYNER	Division/Group	J / L	J. HINKLE (12 HR)	
OES Mngr.	S. ROJAS	Division/Group			
LCSSO Agency Rep	M. CARNEY	Division/Group			
CDCR	T. MAINE	Division/Group			
CCC	C. HARRIS	<b>Branch</b>	<b>IX</b>	<b>J. PIERCE / J. GAHAGAN (T) (12 HR)</b>	
Oregon Dept.of Forestry	B. ARNSMEIER	Division/Group	O	S. LONG / A. WATKINS (T)	
		Division/Group	Q	C. LYONS / B. PORRAZZO (T)	
		Division/Group	R	S. GREND AHL (12 HR)	
		Division/Group			
		Division/Group			
		<b>Branch</b>	<b>FSR</b>	<b>I. HOUSER / G. SCHALL (12 HR)</b>	
		Division/Group			
<b>5. Planning Section:</b>		<b>Branch</b>			
Chief	B. BLOXHAM	Division/Group			
Deputy	S. DEBENEDET / G. GARCIA	Division/Group			
Resource Unit	L. PLATA / T. BYRD / J. HEALD (T)	Division/Group			
Situation Unit	M. THAU (T)	<b>Branch</b>			
Documentation Unit	M. SCHAEFFER	Division/Group			
Demobilization Unit	E. CAMPBELL	Division/Group			
GISS	S. STANISH	Division/Group	Water Supply	T. JOHNSON (12 HR)	
FBAN	S. VOLMER	Division/Group			
IMET	T. FUENTES	Division/Group			
Training Tech Spec	J. VOYSON	<b>Air Operations Branch</b>		<b>Director:</b>	M. STANFORD / S. HAWKINS (T)
Crew Tech Spec	M. O'NEIL	Air Support Group Supervisor		C. WILSON	
<b>6. Logistics Section</b>		Air Tactical Group Supervisor		S. MCGREGOR	
Chief	R. TOVAR	Helibase Manager		J. COLLINS	
Deputy	R. CLUFF				
Supply Unit	J. BECKMAN / J. PECKHAM (T)	<b>8. Finance/Administration Section:</b>			
Facilities Unit	R. HOSTETLER	Chief	R. RAINES		
Ground Support Unit	A. WHITLOCK	Deputy	T. EASTWOOD / P. AGUADA (T)		
Communications Unit	K. JOHNSON	Time Unit	J. OROZCO JR. / Fed Finance T. FORK		
Medical Unit	K. FORTNEY	Procurement Unit	K. SHAEFER		
Ordering Manager	J. SCHEID	Comp/Claims Unit	A. HESTERLY		
Hired Equip. Tech Spec	A. WHITLOCK	Cost Unit	D. SOLIS (T)		
<b>Prepared By: Name:</b>	G. GARCIA	<b>Position/Title:</b>	PSC	<b>Signature:</b> 	
<b>ICS 203</b>		<b>Date/Time:</b>	7/28/2020 2000		



# Hog Fire Forecast

FORECAST NO: 9  
 NAME OF FIRE: Hog  
 UNIT: CALFIRE Team 3  
 PREDICTION FOR: Wednesday Shift  
 SHIFT DATE: July 29, 2020  
 FORECAST ISSUED: 1900 PDT July 28, 2020

Incident Meteorologist (IMET): Tony Fuentes  
 Email: [Tony.Fuentes@noaa.gov](mailto:Tony.Fuentes@noaa.gov)  
 Cell: (240) 778-5300

### \*\*\* Dry and Breezy This Week \*\*\*

A dry and breezy pattern will settle in for the remainder of the week with minimum humidity reaching near single digits and breezy southwest winds. Weak humidity recoveries are expected overnight with the driest and breeziest days expected on Thursday and Friday. Poor RH recoveries are expected Friday night as a dry slot moves across the incident.

#### TODAY (WEDNESDAY):

WEATHER: Dry and breezy.  
 WINDS (EYE LEVEL): Upslope 3-7 mph becoming SW 10-15 mph gusts 22 mph after 1300.  
 MAX TEMPERATURES: 84-89°. 95° at ICP Camp.  
 MINIMUM HUMIDITY: 9-14%  
 TRANSPORT WIND: SSW 10-20 mph  
 HAINES: 5 LAL: 1

#### TONIGHT (WEDNESDAY NIGHT):

WEATHER: Mostly clear.  
 MIN TEMPERATURES: 55-60°F  
 MAX HUMIDITY: 38-43%  
 WINDS (EYE LEVEL): Downslope 3-6 mph.  
 HAINES: 4 LAL: 1

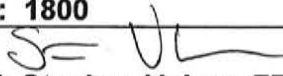
#### THURSDAY:

WEATHER: Breezy, very dry.  
 WINDS (EYE LEVEL): Upslope 3-7 mph becoming SW 10-15 mph gusts 23 mph.  
 MAX TEMPERATURES: 84-89°. 94° at ICP Camp.  
 MINIMUM HUMIDITY: 8-13%  
 TRANSPORT WIND: SSW 20-25 mph  
 HAINES: 5 LAL: 1

#### **Extended Forecast Table:**

	<b>Fri Jul 31</b>	<b>Sat Aug 1</b>	<b>Sun Aug 2</b>	<b>Mon Aug 4</b>
<b>Wx</b>	Very Dry/Breezy	Very Dry/Breezy	Sunny	Dry/Breezy
<b>Wind:</b>	SW 10-15 mph Gusts 24 mph	SW 10-14 mph Gusts 18 mph	SW 8-13 mph Gusts 17 mph	SW 10-15 mph Gusts 22 mph
<b>Max Temp</b>	83-88°	85-89°	85-90°	84-88°
<b>Min RH</b>	7-13%	7-13%	10-15%	10-15%
<b>Min Temp</b>	49-54°	49-54°	50-55°	50-55°
<b>Max RH</b>	37-42%	34-39%	38-43%	41-46%
<b>Haines / LAL / CWR</b>	4 / 1 / 0%	4 / 1 / 0%	5 / 1 / 0%	5 / 1 / 0%

# FIRE BEHAVIOR FORECAST

FORECAST NUMBER: 9	TYPE OF FIRE: Wildfire
FIRE NAME: HOG	OPERATIONAL PERIOD: 7/29/20 – 7/30/20
DATE ISSUED: 7/28/2020	TIME ISSUED: 1800
UNIT: CA-LMU-003874	SIGNED:  Typed/printed: Stephen Volmer FBAN

## INPUTS

### WEATHER SUMMARY

Dry and breezy with relative humidity dropping to the low teens. Temperatures in the upper 80's, LAL 1.  
Winds upslope 3-7 mph becoming Southwest 10-15 mph with gusts to 20 mph after 13:00.  
Weak overnight humidity recovery will occur across the entire area.

See IMET forecast for specific details

## OUTPUTS

### FIRE BEHAVIOR

#### GENERAL:

- The local area has an abundance of heavy timber with ground litter, intermixed with grass, bitterbrush, and Manzanita, along with clear cut plots littered with moderate to heavy slash.
- Fuel moistures in the bitterbrush are nearing record levels, and timber fuel moistures are very low due to drought conditions in the area. Fuel moistures in Manzanita are much higher, slowing fire spread.
- Expect new ignitions to become wind driven quickly, with dangerous rates of spread and short-range spotting, when in alignment with slope.

Timber and slash: Rate of spread 6-10 ft/min // Flame length 3-7 feet // Spotting 1000 feet // PIG 85%

Bitterbrush: Rate of spread 9-12 ft/min // Flame lengths 10-13 feet // Spotting ¼ mile // PIG 70%

Manzanita: Rate of spread 5-9 ft/min // Flame lengths 2-4 ft // Spotting 500 feet // PIG 60%

**\*\*\*Values above are valid for any new starts in the area\*\*\***

#### SPECIFIC:

Branch I & V: Fire behavior will be minimal, with only minor stump holes and smoldering heavy material burning down well interior. Increased winds could cause smoldering material and unburned islands to become active, as well as releasing fire weakened timber.

Branch IX: Entire branch received little moisture over the past 2 days. Deep duff layers will hold heat and smolder. The timber understory and clear-cut plots contain large amounts of dead and down material which will have a high probability to contain smoldering spot fires, and which will spread with the wind.

**AIR OPERATIONS:** Clear, with a slight chance of minor clouds forming in the afternoon. Expect gusty conditions over the ridge tops. South Southwest transport winds 10-20 mph.

Sunrise: 05:58    Sunset: 20:20

## SAFETY

- Snags and stump holes are likely in timber areas.
- Fire weakened timber will continue to release throughout the burn, especially in gusty conditions.
- Be alert for new starts, as they will grow quickly with the high wind and low humidity.



# CAL FIRE INCIDENT MANAGEMENT TEAM 3



1. INCIDENT NAME: <b>Hog</b>		2. DATE PREPARED: July 28, 2020	3. TIME PREPARED: 1500
4. PREPARED BY: David Brockman SOF1	5. LEADER NAME: David Sargenti SOF1	6. OPERATIONAL PERIOD: 7/29/2020 0700 TO 7/30/2020 0700	

# SAFETY MESSAGE

## *Fatigue*

weariness or exhaustion from labor, exertion, or stress

- Take all COVID 19 precautions.
- Trees are weakened due to fire activity. Look Up, Down, and Around.
- Make sure everyone gets a briefing!
- Monitor your hydration/nutrition intake and keep adequate supplies of each.
- Be aware for changing weather conditions
- Drive defensively, watch your speed and use warning lights when needed.
- Watch for civilian traffic in the fire area.



14. WEATHER IS GETTING HOTTER AND DRIER




CAL FIRE INCIDENT MANAGEMENT TEAM 3 SOF1 David Brockman



# INCIDENT RISK ANALYSIS ICS 215A



BRANCH	HAZARDOUS ACTIONS/ CONDITIONS	MITIGATIONS/WARNINGS/REMEDIES	
ALL	COVID 19	<ul style="list-style-type: none"> <li>Wear mask when in camp and around the public.</li> <li>Wash/sanitize hands often.</li> <li>Maintain social distancing when applicable.</li> <li>Complete daily COVID screening process.</li> </ul>	
ALL	DRIVING HAZARDS	<ul style="list-style-type: none"> <li>Watch your speeds.</li> <li>Watch for civilian traffic on the roadways.</li> <li>Drive defensively! Expect the unexpected.</li> <li>Be aware of debris in the roadways from rollout.</li> </ul>	
ALL	WEATHER	<ul style="list-style-type: none"> <li>Warming temperatures.</li> <li>Dropping humidity.</li> </ul>	
ALL	PERSONNEL SAFETY	<ul style="list-style-type: none"> <li>All personnel are responsible for their personal safety.</li> <li>Immediately report any suspicious activity.</li> </ul>	
ALL	POWER LINES	<ul style="list-style-type: none"> <li>Be cautious if you encounter any down lines.</li> <li>Make appropriate notifications if found.</li> </ul>	
ALL	HYDRATION	<ul style="list-style-type: none"> <li><b>Drink water</b> before, during and after each shift.</li> <li>Be alert for signs of heat stress in yourself and others.</li> </ul>	
ALL	FIRE AND DROUGHT WEAKENED TREES/SNAG HAZARDS	<ul style="list-style-type: none"> <li>Follow Hazard Tree Safety Guidelines (IRPG p. 22).</li> <li>Many of the trees within the fire area and along roadways are stressed due to drought conditions and burn times.</li> </ul>	
ALL	MOP UP	<ul style="list-style-type: none"> <li><b>Wear all appropriate PPE.</b></li> <li>Watch for stump holes.</li> <li>Do not get complacent.</li> </ul>	
ALL	COMMUNICATIONS	<ul style="list-style-type: none"> <li>Check the communication plan for frequency assignments.</li> <li>Be clear and concise when talking on the radio.</li> <li>Use human repeaters as needed.</li> </ul>	
ALL	BRIEFINGS	<ul style="list-style-type: none"> <li>Make sure <b>everyone</b> gets a briefing on the plan for the day.</li> <li>Document this on your ICS 214.</li> </ul>	
ALL	LCES	<ul style="list-style-type: none"> <li>Ensure that LCES is being utilized.</li> </ul>	
ALL	HELICOPTER AWARENESS	<ul style="list-style-type: none"> <li>Watch for rotor wash when working near helicopters.</li> <li>Monitor assigned aircraft frequencies.</li> </ul>	
ALL	HEAVY EQUIPMENT	<ul style="list-style-type: none"> <li><b>Watch out for heavy equipment traffic!</b></li> <li>Be aware of heavy equipment working in the area.</li> <li>Be watchful around heavy equipment, they may not see you.</li> </ul>	
<b>Incident Name:</b>  <p style="text-align: center; font-size: 1.5em;"><b>Hog</b></p>		Date Prepared: 7/28/2020 Prepared by: David Brockman SOFT 	Operational Period: 7/29/2020-7/30/2020  0700-0700

*In readiness is all*





## CAL FIRE INCIDENT MANAGEMENT TEAM 3



### Fire and COVID-19 Briefing Checklist

#### Self-Awareness / Screening

- Immediately separate yourself from others.
- Notify supervisor if you or others experience:
  - Cough, more than expected
  - Shortness of breath or difficulty breathing
  - New loss of taste or smell
  - Fever
  - Sore throat
  - Chills
  - Muscle pain
- Review and follow crew and division plans to isolate, triage, and transport symptomatic personnel.

#### Hygiene on the Fireline

- Properly wash or sanitize your hands often, especially before and after eating or entering a public place, and after coughing or sneezing.
- Avoid handshakes and communal use items.
- Maintain a supply of hand sanitizer and hand wipes. Inform supervisor of needed resupply.
- Disinfect high touch surfaces often:
  - Radios, phones, doors, pumps, fuel cans, etc.

#### Social Distancing and Protective Equipment

- Initiate, practice, and remind others of social distancing.
- Conduct briefings and conversations outdoors and at least 6 feet apart.
- Utilize face coverings as a tool when practical.
- Clean or replace dirty face coverings, equipment, and PPE.

#### Communications

- Face coverings and social distancing complicate communications. Ensure effective sender/receiver messaging.

#### Protect yourself, your crew, and your camp!

Find more information: <https://www.nwccg.gov/coronavirus>.

NFES 002646 (06/2020)

*In readiness is all*











# ASSIGNMENT LIST (ICS 204 WF)

CONTROLLED UNCLASSIFIED  
INFORMATION//BASIC

<b>1. Incident Name:</b> <p style="text-align: center; font-size: 1.2em;">Hog</p>	<b>2. Operational Period:</b> Date From: 07/29/20    Date To: 07/30/20 Time From: 0700    Time To: 0700	<b>3. Branch</b> <b>Division</b> <p style="text-align: center; font-size: 1.5em;">IX                      O</p> <p style="text-align: center;">Page 1 of 1              Oscar</p>
--	---	--

<b>4. Operations Personnel:</b> Operations Section Chief: <b>S. NORMAN / A. TURNER (T)</b> Branch Director: <b>J. PIERCE / J. GAHAGAN (T) (12 HR)</b> Division/Group Supervisor: <b>S. LONG / A. WATKINS (T)</b>	Night Ops: <b>J. OHS</b> Branch Safety: Air Attack: <b>S. MCGREGOR</b>
---	--

5. Resources Assigned:		** Resources Below in Bold are 12 Hour **					
Resource Identifier	ALS	LWD	Leader	Personnel	Request #	Hours	Reporting Location
STC XNE 4101C			J. SMITH	19	E-83	0700-0700	DP 91
STC XPL 4127C			<b>M. LAUCHER</b>	19	<b>E-84</b>	<b>0700-1900</b>	DP 91
STC XCZ 2327C	X		<b>S. CULLEN</b>	21	<b>E-264</b>	<b>0700-1900</b>	DP 91
CRW T2 C-28			<b>A. MENDOZA</b>	20	<b>C-28</b>	<b>0700-1900</b>	DP 91
CRW T2 C-31			<b>J. COKE</b>	20	<b>C-31</b>	<b>0700-1900</b>	DP 91
CRW T2 C-89			<b>R. HOFFMAN</b>	20	<b>C-89</b>	<b>0700-1900</b>	DP 91
CRW T2 C-93			<b>L. AYALA</b>	20	<b>C-93</b>	<b>0700-1900</b>	DP 91
WT PVT E-44			P. MARYMEE	2	E-44	0700-0700	DP 91
WT PVT E-109			D. OAILAR	2	E-109	0700-0700	DP 91
FEMP SCHLANGE			K. SCHLANGE	1	O-354	0700-0700	DP 91
FEMT SCHMITZ			D. SCHMITZ	1	O-364	0700-0700	DP 91
SOFR CHAMBLIN			<b>M. CHAMBLIN</b>	1	<b>O-70</b>	<b>0700-1900</b>	DP 91

**6. Work Assignments:**  
 100% Mop Up.  
 Pull hose as needed.  
 Backhaul all trash.

**7. Special Instructions:**

8. Communications							
Name	Ch	Function	Rx Freq	Rx Tone	Tx Freq	Tx Tone	Notes
C11 T15	1	COMMAND	151.1675	103.5 (T8)	159.3975	162.2 (T15)	Roop Mtn covers NE side of Branch V
C11 T14	2	COMMAND	151.1675	103.5 (T8)	159.3975	151.4 (T14)	Shaffer Mtn covers SW side of Branch V
VFIRE 25	11	TACTICAL	154.2875	156.7 (T6)	154.2875	156.7 (T6)	
CDF T23	14	AIR TO GROUND	159.4500	192.8 (T16)	159.4500	192.8 (T16)	
CALCORD	15	MEDICAL	156.0750	156.7 (T6)	156.0750	156.7 (T6)	
GUARD	16	EMERGENCY	168.6250	0.0	168.6250	110.9 (T1)	EMERGENCY USE ONLY

<b>9. Prepared by: Name:</b>	T. BYRD	RESL	Signature:
ICS 204	Date/Time: 7/28/2020	2200	Personnel Count: 146

# ASSIGNMENT LIST (ICS 204 WF)

CONTROLLED UNCLASSIFIED  
INFORMATION//BASIC

<b>1. Incident Name:</b> <p style="text-align: center; font-size: 1.2em;">Hog</p>	<b>2. Operational Period:</b> Date From: 07/29/20      Date To: 07/30/20 Time From: 0700              Time To: 0700	<b>3. Branch</b> <b>Division</b> <p style="text-align: center; font-size: 1.5em;">IX                                  Q</p> <p style="text-align: center;">Page 1 of 1                      Quebec</p>
--	---	---

<b>4. Operations Personnel:</b>	
Operations Section Chief: <b>S. NORMAN / A. TURNER (T)</b>	Night Ops: <b>J. OHS</b>
Branch Director: <b>J. PIERCE / J. GAHAGAN (T) (12 HR)</b>	Branch Safety:
Division/Group Supervisor: <b>C. LYONS / B. PORRAZZO (T)</b>	Air Attack: <b>S. MCGREGOR</b>

5. Resources Assigned:	** Resources Below in Bold are 12 Hour **							
Resource Identifier	ALS	LWD	Leader	Personnel	Request #	Hours	Reporting Location	
STC NEU 9231C			T. BOWSON	17	E-49	0700-0700	DP 90	
<b>STC XED 4077C</b>			<b>A. MORENO</b>	21	<b>E-86</b>	<b>0700-1900</b>	<b>DP 90</b>	
<b>CRW T2 C-36</b>			<b>A. HERGERT</b>	20	<b>C-36</b>	<b>0700-1900</b>	<b>DP 90</b>	
<b>CRW T2 C-64</b>			<b>F. PEREZ</b>	20	<b>C-64</b>	<b>0700-1900</b>	<b>DP 90</b>	
<b>CRW T2 C-65</b>			<b>A. TOMTHAK</b>	20	<b>C-65</b>	<b>0700-1900</b>	<b>DP 90</b>	
<b>CRW T2 C-88</b>			<b>T. PORTER</b>	20	<b>C-88</b>	<b>0700-1900</b>	<b>DP 90</b>	
<b>CRW T2 C-96</b>			<b>O. MIRANDA</b>	20	<b>C-96</b>	<b>0700-1900</b>	<b>DP 90</b>	
DOZ PVT E-275			G. HAROLD	1	E-275	0700-0700	DP 90	
WT PVT E-114			J. SHELTON	2	E-114	0700-0700	DP 90	
WT PVT E-249			T. GARR	2	E-249	0700-0700	DP 90	
WT PVT E-333			D. WEAVER	2	E-333	0700-0700	DP 90	
WT PVT E-337			C. SKINNER	1	E-337	0700-0700	DP 90	
<b>FALM O-381</b>			<b>K. CYRUS</b>	2	<b>O-381</b>	<b>0700-1900</b>	<b>DP 90</b>	
<b>FALM O-387</b>			<b>O'CONNELL</b>	2	<b>O-387</b>	<b>0700-1900</b>	<b>DP 90</b>	
<b>FELB BOURGAULT</b>			<b>L. BOURGAULT</b>	1	<b>O-350</b>	<b>0700-1900</b>	<b>DP 90</b>	
HEQB W. ROBINSON			W. ROBINSON	1	O-59	0700-0700	DP 90	
FEMP SWICK			R. SWICK	1	O-356	0700-0700	DP 90	
FEMT BAUTHIER			B. BAUTHIER	1	O-224	0700-0700	DP 90	
<b>SOFR PALMER</b>			<b>L. PALMER</b>	1	<b>O-235</b>	<b>0700-1900</b>	<b>DP 90</b>	

**6. Work Assignments:**  
 100% Mop Up.  
 Pull hose as needed.  
 Backhaul all trash.

**7. Special Instructions:**

8. Communications							
Name	Ch	Function	Rx Freq	Rx Tone	Tx Freq	Tx Tone	Notes
C11 T15	1	COMMAND	151.1675	103.5 (T8)	159.3975	162.2 (T15)	Roop Mtn covers NE side of Branch V
C11 T14	2	COMMAND	151.1675	103.5 (T8)	159.3975	151.4 (T14)	Shaffer Mtn covers SW side of Branch V
VFIRE 26	12	TACTICAL	154.3025	156.7 (T6)	154.3025	156.7 (T6)	
CDF T23	14	AIR TO GROUND	159.4500	192.8 (T16)	159.4500	192.8 (T16)	
CALCORD	15	MEDICAL	156.0750	156.7 (T6)	156.0750	156.7 (T6)	
GUARD	16	EMERGENCY	168.6250	0.0	168.6250	110.9 (T1)	EMERGENCY USE ONLY

**9. Prepared by: Name:**                      T. BYRD    RESL    Signature:

**ICS 204**    Date/Time: 7/28/2020      2200    Personnel Count: 155





# ASSIGNMENT LIST (ICS 204 WF)

CONTROLLED UNCLASSIFIED  
INFORMATION//BASIC

<b>1. Incident Name:</b> <p style="text-align: center; font-size: 1.2em;">Hog</p>	<b>2. Operational Period:</b> Date From: 07/29/20      Date To: 07/30/20 Time From: 0700              Time To: 0700	<b>3. Branch</b> <b>Division</b> <p style="text-align: center; font-size: 1.2em;">FSR</p>
--	---	--

<b>4. Operations Personnel:</b>		Page 1 of 3
Operations Section Chief: <b>S. NORMAN / A. TURNER (T)</b>	Night Ops: <b>J. OHS</b>	
Branch Director: <b>I. HOUSER / G. SCHALL (12 HR)</b>	Branch Safety:	
Division/Group Supervisor:	Air Attack: <b>S. MCGREGOR</b>	

5. Resources Assigned:		** Resources Below in Bold are 12 Hour **					
Resource Identifier	ALS	LWD	Leader	Personnel	Request #	Hours	Reporting Location
CRW T2 C-61			<b>L. CERVANCEZ</b>	<b>20</b>	<b>C-61</b>	<b>0700-1900</b>	<b>ICP</b>
CRW T2 C-66			<b>C. OROZCO</b>	<b>20</b>	<b>C-66</b>	<b>0700-1900</b>	<b>ICP</b>
CRW PVT C-67			<b>M. OJEDA</b>	<b>20</b>	<b>C-67</b>	<b>0700-1900</b>	<b>ICP</b>
CRW T2 C-78			<b>L. RASCH</b>	<b>20</b>	<b>C-78</b>	<b>0700-1900</b>	<b>ICP</b>
CRW T2 C-90			<b>E. LORD</b>	<b>1</b>	<b>C-90</b>	<b>0700-1900</b>	<b>ICP</b>
DOZ PVT E-31			<b>M. KIRACK</b>	<b>1</b>	<b>E-31</b>	<b>0700-1900</b>	<b>ICP</b>
DOZ PVT E-91			<b>T. OFERALL</b>	<b>1</b>	<b>E-91</b>	<b>0700-1900</b>	<b>ICP</b>
DOZ PVT E-100			<b>S. MAYWARD</b>	<b>1</b>	<b>E-100</b>	<b>0700-1900</b>	<b>ICP</b>
DOZ PVT E-101			<b>T. PARKS</b>	<b>1</b>	<b>E-101</b>	<b>0700-1900</b>	<b>ICP</b>
DOZ PVT E-258			<b>S. LASSEN</b>	<b>1</b>	<b>E-258</b>	<b>0700-1900</b>	<b>ICP</b>
DOZ PVT E-276			<b>D. DIAL</b>	<b>1</b>	<b>E-276</b>	<b>0700-1900</b>	<b>ICP</b>
DOZ PVT E-277			<b>B. FORKNER</b>	<b>1</b>	<b>E-277</b>	<b>0700-1900</b>	<b>ICP</b>
DOZ PVT E-279			<b>S. MOORE</b>	<b>1</b>	<b>E-279</b>	<b>0700-1900</b>	<b>ICP</b>
WT PVT E-32			<b>R. POTTER</b>	<b>1</b>	<b>E-32</b>	<b>0700-1900</b>	<b>ICP</b>
WT PVT E-41			<b>D. KIRACK</b>	<b>1</b>	<b>E-41</b>	<b>0700-1900</b>	<b>ICP</b>
WT PVT E-58			<b>M. HAMILTON</b>	<b>1</b>	<b>E-58</b>	<b>0700-1900</b>	<b>ICP</b>
WT PVT E-107			<b>H. MCGOWAN</b>	<b>1</b>	<b>E-107</b>	<b>0700-1900</b>	<b>ICP</b>
WT PVT E-167				<b>1</b>	<b>E-167</b>	<b>0700-1900</b>	<b>ICP</b>

**6. Work Assignments:**  
Refer to READ on Lassen National Forest.  
Follow Fire Suppression Repair Plan.  
Coordinate with HEQB at end of shift.

**7. Special Instructions:**

8. Communications							
Name	Ch	Function	Rx Freq	Rx Tone	Tx Freq	Tx Tone	Notes
C11 T15	1	COMMAND	151.1675	103.5 (T8)	159.3975	162.2 (T15)	Roop Mtn covers NE side of Branch V
C11 T14	2	COMMAND	151.1675	103.5 (T8)	159.3975	151.4 (T14)	Shaffer Mtn covers SW side of Branch V
	3						
CDF T29	4	TACTICAL	151.3475	192.8 (T16)	151.3475	192.8 (T16)	Fire Suppression Repair (FSR)
CDF T23	14	AIR TO GROUND	159.4500	192.8 (T16)	159.4500	192.8 (T16)	
CALCORD	15	MEDICAL	156.0750	156.7 (T6)	156.0750	156.7 (T6)	
GUARD	16	EMERGENCY	168.6250	0.0	168.6250	110.9 (T1)	EMERGENCY USE ONLY

<b>9. Prepared by: Name:</b>	T. BYRD	RESL	
Signature:			
ICS 204	Date/Time: 7/28/2020	2200	Personnel Count: 94

NIMS IAP

CONTROLLED UNCLASSIFIED INFORMATION//BASIC

# ASSIGNMENT LIST (ICS 204 WF)

CONTROLLED UNCLASSIFIED  
INFORMATION/BASIC

<b>1. Incident Name:</b> <p style="text-align: center; font-size: 1.2em;">Hog</p>	<b>2. Operational Period:</b> Date From: 07/29/20    Date To: 07/30/20 Time From: 0700    Time To: 0700	<b>3. Branch</b> <b>Division</b> <p style="text-align: center; font-size: 1.2em;">FSR</p>
--	---	--

<b>4. Operations Personnel:</b>		Page 2 of 3
Operations Section Chief: <b>S. NORMAN / A. TURNER (T)</b>	Night Ops: <b>J. OHS</b>	
Branch Director: <b>I. HOUSER / G. SCHALL (12 HR)</b>	Branch Safety:	
Division/Group Supervisor:	Air Attack: <b>S. MCGREGOR</b>	

5. Resources Assigned:	** Resources Below in Bold are 12 Hour **						
Resource Identifier	ALS	LWD	Leader	Personnel	Request #	Hours	Reporting Location
WT PVT E-250			<b>R. LOGUE</b>	1	E-250	0700-1900	ICP
WT PVT E-257			<b>F. LUTS</b>	1	E-257	0700-1900	ICP
WT PVT E-334			<b>D. MCGARR</b>	1	E-334	0700-1900	ICP
WT PVT E-335			<b>B. JOHNSON</b>	1	E-335	0700-1900	ICP
WT PVT E-336			<b>J. MILLER</b>	1	E-336	0700-1900	ICP
WT PVT E-340			<b>H. SPURLOCK</b>	1	E-340	0700-1900	ICP
MAST PVT E-312			<b>T. FUNES</b>	1	E-312	0700-1900	ICP
MAST PVT E-313			<b>D. THEIS</b>	1	E-313	0700-1900	ICP
MAST PVT E-372			<b>R. OLSON</b>	1	E-372	0700-1900	ICP
EXC PVT E-371			<b>B. FORKNER</b>	1	E-371	0700-1900	ICP
EXC PVT E-424			<b>R. KOEHLER</b>	1	E-424	0700-1900	ICP
EXC PVT E-430			<b>M. KIRACK</b>	1	E-430	0700-1900	ICP
EXC PVT E-444			<b>I. POTTER</b>	1	E-444	0700-1900	ICP
EXC PVT E-445			<b>J. BRITTEN</b>	1	E-445	0700-1900	ICP
EXC PVT E-449			<b>M. GOODEN</b>	1	E-449	0700-1900	ICP
EXC PVT E-452			<b>P. WARNER</b>	1	E-452	0700-1900	ICP
CHIP PVT E-315			<b>M. BLAKMAN</b>	1	E-315	0700-1900	ICP
CHIP PVT E-425			<b>C. HAPTONSTALL</b>	1	E-425	0700-1900	ICP
CHIP PVT E-427			<b>H. FERGUSON</b>	1	E-427	0700-1900	ICP

**6. Work Assignments:**  
Refer to READ on Lassen National Forest.  
Follow Fire Suppression Repair Plan.  
Coordinate with HEQB at end of shift.

**7. Special Instructions:**

8. Communications							
Name	Ch	Function	Rx Freq	Rx Tone	Tx Freq	Tx Tone	Notes
C11 T15	1	COMMAND	151.1675	103.5 (T8)	159.3975	162.2 (T15)	Roop Mtn covers NE side of Branch V
C11 T14	2	COMMAND	151.1675	103.5 (T8)	159.3975	151.4 (T14)	Shaffer Mtn covers SW side of Branch V
	3						
CDF T29	4	TACTICAL	151.3475	192.8 (T16)	151.3475	192.8 (T16)	Fire Suppression Repair (FSR)
CDF T23	14	AIR TO GROUND	159.4500	192.8 (T16)	159.4500	192.8 (T16)	
CALCORD	15	MEDICAL	156.0750	156.7 (T6)	156.0750	156.7 (T6)	
GUARD	16	EMERGENCY	168.6250	0.0	168.6250	110.9 (T1)	EMERGENCY USE ONLY

**9. Prepared by: Name:**    T. BYRD    RESL    Signature:   
**ICS 204**    Date/Time: 7/28/2020 2200    Personnel Count: 19

# ASSIGNMENT LIST (ICS 204 WF)

CONTROLLED UNCLASSIFIED  
INFORMATION//BASIC

<b>1. Incident Name:</b> <p style="text-align: center; font-size: 1.2em;">Hog</p>	<b>2. Operational Period:</b> Date From: 07/29/20      Date To: 07/30/20 Time From: 0700              Time To: 0700	<b>3. Branch</b> <b>Division</b> <p style="text-align: center; font-size: 1.2em;">FSR</p>
--	---	--

<b>4. Operations Personnel:</b>		Page 3 of 3
Operations Section Chief: <b>S. NORMAN / A. TURNER (T)</b>	Night Ops: <b>J. OHS</b>	
Branch Director: <b>I. HOUSER / G. SCHALL (12 HR)</b>	Branch Safety:	
Division/Group Supervisor:	Air Attack: <b>S. MCGREGOR</b>	

5. Resources Assigned:		** Resources Below in Bold are 12 Hour **					
Resource Identifier	ALS	LWD	Leader	Personnel	Request #	Hours	Reporting Location
CHIP PVT E-429			<b>J. FIKE</b>	1	<b>E-429</b>	0700-1900	ICP
HEQB T. ROBINSON			<b>T. ROBINSON</b>	1	<b>O-215</b>	0700-1900	ICP
HEQB ANKLAM (T)			<b>B. ANKLAM</b>	1	<b>O-341</b>	0700-1900	ICP
HEQB KLOSEK			<b>J. KLOSEK</b>	1	<b>O-334</b>	0700-1900	ICP
HEQB LEONARD (T)			<b>K. LEONARD</b>	1	<b>O-344</b>	0700-1900	ICP
HEQB GOLDIE			<b>N. GOLDIE</b>	1	<b>O-60</b>	0700-1900	ICP
HEQB FARNSWORTH			<b>J. FARNSWORTH</b>	1	<b>O-499</b>	0700-1900	ICP
HEQB HENRY (T)			<b>J. HENRY</b>	1	<b>O-497</b>	0700-1900	ICP
FOBS RHOADS			<b>J. RHOADS</b>	1	<b>O-127</b>	0700-1900	ICP
FOBS JANOW (T)			<b>T. JANOW</b>	1	<b>O-241</b>	0700-1900	ICP
FOBS FICHER			<b>J. FICHER</b>	1	<b>O-302</b>	0700-1900	ICP
FOBS NANNINI			<b>B. NANNINI</b>	1	<b>O-455</b>	0700-1900	ICP
READ IMMEKER			<b>D. IMMEKER</b>	1	<b>O-15</b>	0700-1900	ICP
READ MARTIN			<b>J. MARTIN</b>	1	<b>O-16</b>	0700-1900	ICP
READ FARRIS			<b>P. FARRIS</b>	1	<b>O-33</b>	0700-1900	ICP
READ MERREFIELD			<b>J. MERREFIELD</b>	1	<b>O-490</b>	0700-1900	ICP
ARCH SEGROVES			<b>A. SEGROVES</b>	1	<b>O-500</b>	0700-1900	ICP
ARCH ALLEN			<b>T. ALLEN</b>	1	<b>O-501</b>	0700-1900	ICP
RESP MCDANIEL			<b>J. MCDANIEL</b>	1	<b>O-478</b>	0700-1900	ICP
RESP COLLINS			<b>T. COLLINS</b>	1	<b>O-479</b>	0700-1900	ICP

**6. Work Assignments:**  
Refer to READ on Lassen National Forest.  
Follow Fire Suppression Repair Plan.  
Coordinate with HEQB at end of shift.

**7. Special Instructions:**

8. Communications							
Name	Ch	Function	Rx Freq	Rx Tone	Tx Freq	Tx Tone	Notes
C11 T15	1	COMMAND	151.1675	103.5 (T8)	159.3975	162.2 (T15)	Roop Mtn covers NE side of Branch V
C11 T14	2	COMMAND	151.1675	103.5 (T8)	159.3975	151.4 (T14)	Shaffer Mtn covers SW side of Branch V
	3						
CDF T29	4	TACTICAL	151.3475	192.8 (T16)	151.3475	192.8 (T16)	Fire Suppression Repair (FSR)
CDF T23	14	AIR TO GROUND	159.4500	192.8 (T16)	159.4500	192.8 (T16)	
CALCORD	15	MEDICAL	156.0750	156.7 (T6)	156.0750	156.7 (T6)	
GUARD	16	EMERGENCY	168.6250	0.0	168.6250	110.9 (T1)	EMERGENCY USE ONLY

<b>9. Prepared by: Name:</b> T. BYRD	RESL	Signature:	
ICS 204	Date/Time: 7/28/2020 2200	Personnel Count: 20	





# ICS 205 - INCIDENT RADIO COMMUNICATIONS PLAN

CONTROLLED UNCLASSIFIED  
INFORMATION//BASIC

<b>1. Incident Name:</b> Hog Incident Channels	<b>2. Date/Time Prepared</b> Date: 07/28/2020 Time: 1630	<b>3. Operational Period:</b> Date From: 07/29/20 Time From: 0700 Date To: 07/30/20 Time To: 0700
--	--	---

4. Communications									
Ch#	Function	Name	Assigned To	Rx Freq	Rx Tone	Tx Freq	Tx Tone	Notes	
1	COMMAND	C11 T15	ALL DIVS	151.1675	103.5 (T8)	159.3975	162.2 (T15)	Roop Mtn covers NE side of Branch V	
2	COMMAND	C11 T14	ALL DIVS	151.1675	103.5 (T8)	159.3975	151.4 (T14)	Shaffer Mtn covers SW side of Branch V	
3									
4	TACTICAL	CDF T29	DIV A / FSR	151.3475	192.8 (T16)	151.3475	192.8 (T16)	Fire Suppression Repair (FSR)	
5	TACTICAL	CDF T30	DIV F / G	151.3925	192.8 (T16)	151.3925	192.8 (T16)		
6	TACTICAL	CDF T31	DIV C	159.3825	192.8 (T16)	159.3825	192.8 (T16)		
7									
8									
9									
10	TACTICAL	VFIRE 24	DIV J / L	154.2725	156.7 (T6)	154.2725	156.7 (T6)		
11	TACTICAL	VFIRE 25	DIV O	154.2875	156.7 (T6)	154.2875	156.7 (T6)		
12	TACTICAL	VFIRE 26	DIV Q / R / WTR SPLY	154.3025	156.7 (T6)	154.3025	156.7 (T6)		
13	TACTICAL	VTAC 14	DIV D / E	159.4725	156.7 (T6)	159.4725	156.7 (T6)	VTAC14 also used for morning briefing	
14	AIR TO GROUND	CDF T23	ALL DIVS	159.4500	192.8 (T16)	159.4500	192.8 (T16)		
15	MEDICAL	CALCORD	ALL DIVS	156.0750	156.7 (T6)	156.0750	156.7 (T6)		
16	EMERGENCY	GUARD	ALL DIVS	168.6250	0.0	168.6250	110.9 (T1)	EMERGENCY USE ONLY	
17									
18									
19									
20	EMERGENCY	GUARD	ALL DIVS	168.6250	0.0	168.6250	110.9 (T1)	EMERGENCY USE ONLY	

**5. Special Instructions**

<b>6. Prepared by (Communications Unit Leader):</b> Name: Kyle Johnson	Signature:
ICS 205 - CONTROLLED UNCLASSIFIED INFORMATION//BASIC	Date/Time: 7/28/2020 2000 <small>NIMS IAP</small>







CAL FIRE INCIDENT  
MANAGEMENT TEAM 3



---

**RADIO BRIEFING  
WILL BE BROADCAST ON  
VTAC 14**

---

*In readiness is all*

<b>1. Incident Name:</b> <p style="text-align: center;">Hog</p>	<b>2. Operational Period:</b> Date From: 7/29/20 Date To: 7/30/20 Time From: 0700 Time To: 0700
--	--

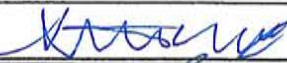
<b>3. Medical Aid Stations:</b>			
Name	Location	Contact Number/Freq	Paramedics
CAL MAT	ICP	916-664-2757/ Hog Coms	Yes


<b>4. Transportation (indicate air or ground):</b>			
Ambulance Service	Location	Contact Number	Level of Service
Plumas 12 (ground)	DP 91	530-249-8483/ Hog Coms	ALS
Guard 841 (24hr rescue/hoist)	Fall River Helibase	Hog Coms	ALS
SEMSA Air 1 (air)	Susanville Airport	866-297-1352/ Hog Coms	ALS

<b>5. Hospitals:</b>								
Hospital Name	Address,		Contact Number(s)/ Frequency	Travel Time		Trauma Center	Burn Center	Helipad
	Lat & Long Helipad			Air	Ground			
Banner Lassen Hospital	1800 Spring Ridge Dr Susanville, CA 96130 Lat/Long N 40' 26.27, W 120' 37.67		(530) 252-2096	5 min	10 min	Level 3	<input type="checkbox"/>	<input checked="" type="checkbox"/>
Dignity Health Mercy Medical Center Redding	2175 Rosaline Ave Redding, CA 96001 Lat/Long: N 40' 34.33, W 122' 23.80		(530) 225-7201	39 min	2 hr	Level 2	<input type="checkbox"/>	<input checked="" type="checkbox"/>
UC Davis Medical Center	2315 Stockton Blvd Sacramento, CA 95817 Lat/Long N 38' 33.28, W 121' 27.35		(916) 734-5669	1hr	3 hr	Level 1	<input checked="" type="checkbox"/>	<input checked="" type="checkbox"/>
Renown Regional Medical Center	1155 Mill Street Reno, NV 89502 Lat/Long: N 39' 31.52, W 119' 47.74		(775) 982-2005	32 min	2 hr	Level 2	<input type="checkbox"/>	<input checked="" type="checkbox"/>

<b>6. Special Medical Emergency Procedures</b>	
<p><b>Line Emergency</b> Crew Supervisor will contact Division Supervisor with patient complaint/condition and location.</p> <p>- Division Group Supervisor Contacts:</p> <ol style="list-style-type: none"> <li>1. Closest EMS resource</li> <li>2. Communications Unit</li> </ol> <p>- Communications Unit Contacts:</p> <ol style="list-style-type: none"> <li>1. Ground or Air ambulance as requested.</li> <li>2. Operations</li> <li>3. Safety</li> <li>4. Medical Unit</li> </ol> <p>- Division Supervisor or designee will serve as point of contact and run medical emergency on assigned channel.</p> <ol style="list-style-type: none"> <li>1. A pre-assigned tactical frequency (i.e. CALCORD) should be used for IWI and only for duration of the emergency.</li> </ol> <p>- Communications Unit will clear the Command channel for emergency traffic as needed for duration of the need.</p> <p><b>Camp Emergency</b> Contact Medical Unit with patient complaint/condition and location. Medical staff will respond to stabilize the patient.</p> <p>- Medical Unit contacts</p> <ol style="list-style-type: none"> <li>1. Communications</li> <li>2. Safety</li> <li>3. Logistics</li> <li>4. Operations</li> <li>5. Crew Supervisor</li> <li>6. Comp/Claims</li> </ol>	<p><b>Injury Reporting Procedures</b></p> <p>Nature of Injury: _____          Location of Patient: _____          Point of Contact: _____          Transportation Requested by: Air _____ Ground _____          Point of Pick-Up: _____          Lat: _____ Long: _____          Patient Unit ID: _____          Is an EMT with Patient: Yes _____ No _____          Age: _____ Sex: Male _____ Female _____</p> <p><b>All Emergencies - Secure the area and identified witnesses for later investigation. Keep accurate log of events.</b></p>

Check box if aviation assets are utilized for rescue. If assets are used, coordinate with Air Operations.

<b>7. Prepared by (Medical Unit Leader):</b> <p style="text-align: center;">S. McGary</p>	Signature: 
--	--

<b>8. Approved by (Safety Officer):</b> <p style="text-align: center;">D. SARGENTI / D. BROCKMAN (T)</p>	Signature: 
---	--

ICS 206	Date/Time: 7/28/20 2000
---------	-------------------------



CAL FIRE INCIDENT  
MANAGEMENT TEAM 3



---

## TRAINING SPECIALIST MESSAGE

### TRAINERS/EVALUATORS:

*Beat the Rush!!*

If as much work as possible has been completed in the position task book, you are strongly encouraged to take advantage of your time in camp and conduct the training close-out with the TNSP. It is not necessary to wait until you demob.

### TRAINEES:

Tomorrow, July 30<sup>th</sup> at 1200 hours is the deadline to close out your active training assignment with the TNSP. In order to receive documented credit for your training assignment, you must close out with the Training Specialist.

Bring the following to the "exit interview"

- Your properly initiated Position Task Book
- Completed and signed ICS 225 Performance Evaluation
- Completed and signed Evaluation Record

Forms are available at the Training Desk  
Remember: No documentation- it didn't happen!

Justin Voyson TNSP 661-547-8629

---

*In readiness is all*



# INCIDENT MANAGEMENT TEAM 3



## DEMOBILIZATION MESSAGE

Hog Incident  
CA-LMU-003874

We appreciate your efforts during this incident and want to make sure that we get you to your next destination safely and efficiently. When we begin demobilization, a Tentative Demobilization List will be posted in several places around base camp, including the briefing area and the eating area. If you are on this list, please adhere to the following:

### SHOW UP AT THE DESIGNATED TIME

- Show up at the designated time.
- Do not show up early.
- Do not show up late.

A demobilization schedule has been prepared in careful coordination with all essential demobilization functions. Not following the demobilization schedule can have significant negative impacts on the Demobilization Unit staff and all other resources scheduled for demobilization. We do not want you or any other resources to have unnecessary delays. Please adhere to your scheduled demobilization time.

### BE PREPARED FOR A RE-ASSIGNMENT

There may be other incidents in the state that are in need of resources. There is a possibility that some of the resources released from this incident will be immediately assigned to another one. Please make sure you are properly supplied, rested, and nourished while waiting for your designated demobilization time.

### BE THOROUGH AND EFFICIENT

Demobilization begins and ends at the Demobilization Unit. Please follow the instructions given to you when starting the demobilization process. Returning to the Demobilization Unit with a complete and accurate Demobilization Check-Out (ICS-221) form will help prevent any unnecessary delays and ensure you are shown as available for future assignments. Unforeseen delays can occur during the demobilization process, such as mechanical issues discovered while at Ground Support. Plan to visit the Time Unit towards the end of the demobilization process in order to provide an accurate accounting of your time.

Prepared by DMOB Eric Campbell



# PUBLIC INFORMATION SECTION



Incident Information Line: (530) 282-5714  
Incident Media Line: (530) 282-5714

Incident Updates:  
[www.fire.ca.gov/current\\_incidents](http://www.fire.ca.gov/current_incidents)

STATUS	
Incident Start Date: 7/18/2020	Incident Start Time: 3:30 PM
Cause: Under Investigation	Acres:
Containment:	Total Personnel:

**MEDIA** – The California State Penal Code Section 409.5(d) allows the news media to enter scenes of disaster, riot or civil disturbance. Properly identified members of the news media should not be restricted from entering locations specified within the code. However, this does not include crime scenes, private property and does not imply that the news media may interfere with incident operations while they are in the areas of concern. More information can be found [here](#).

**CAL FIRE SOCIAL MEDIA POLICY** – When assigned to a CAL FIRE incident, you will adhere to the CAL FIRE Social Media Policy, Section 0691. You can find further information about the CAL FIRE Social Media Policy [here](#).

**PHOTOGRAPHS AND VIDEOS OF INCIDENT** – We are in a new era of media. Media no longer means news/broadcast industry, but now refers to anyone that has the capability to shoot video, photographs and post them onto social media sites in a matter of minutes. Unfortunately, we have seen some instances of photographs or videos that have depicted unsafe, unprofessional or embarrassing circumstances which are a serious breach of ethics. When this happens, it reflects poorly on all that are attached to this incident. Posting an inappropriate video, photo or blog comment could expose oneself to unwanted ramifications. It may be unsafe to shoot photos or video and a firefighter who is concentrating on a camera loses their situational awareness.

The Public Information Office would like copies of the video and pictures that you safely took while not in an emergency situation, fire suppression activity or in an overhead assignment. Bring your video and pictures to the Public Information trailer; they will be reviewed and possibly uploaded to our many CAL FIRE social media sites. Remember, we don't want photographs or videos that depict unsafe, unprofessional or embarrassing circumstances, which are a serious breach of ethics.

**LOST AND FOUND** – The Information Section will manage lost and found items for the incident. If you have lost an item please leave your contact information and what you have lost at the Information Section. If you have found an item on the incident, bring the item to the Information Section with your contact information as well. All items left in Lost and Found will be turned over to the local CAL FIRE Shasta Unit.

**MAIL SERVICE** – The Information Section can assist you with sending and receiving mail.

Prepared by Dan Olson



# FINANCE SECTION MESSAGE



**CAL FIRE staff; please ensure you start your eFC-33s with the Personnel Time Recorder.**

**Please make sure hired equipment shift tickets are completed for all private vendors and dropped off in the Time Unit by agency personnel / line supervisors only, as well as EERAs.**

**Please report all injuries and suppression damage to the Comp / Claims Unit, no matter how minor.**

**The Finance Section is located in the grass area across from briefing.**

**Federal and Contract resources need to check-in with the Federal Time Unit.**

**OES is located in the back of fairgrounds.**

**ROGER RAINES, FSC1**  
**TERRY EASTWOOD, DEP. FSC1**

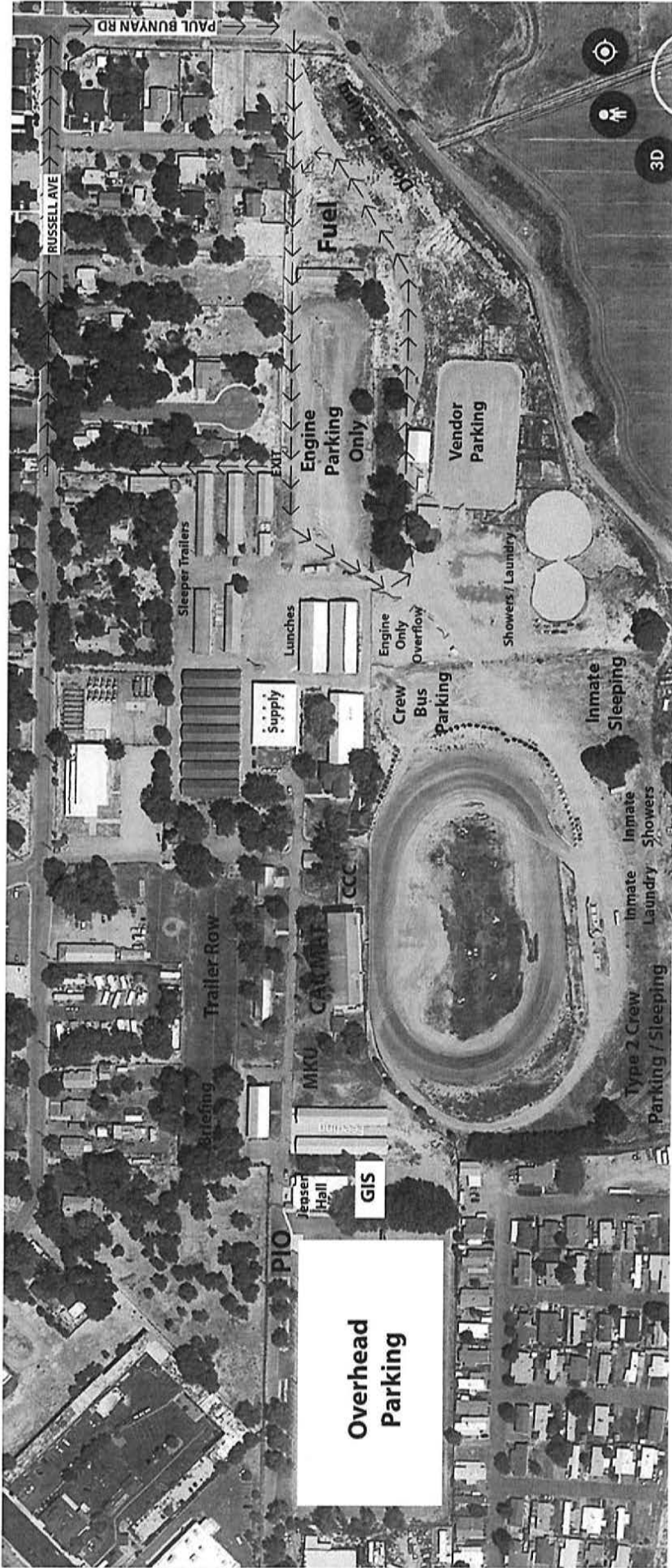
A handwritten signature in blue ink, appearing to be "Roger Raines", written over the printed name.

# Shift Ticket Example

EMERGENCY SHIFT TICKET and EVALUATION FORM					Contractor Name						
The responsible Government Officer will complete this form each shift					Fireline Builders						
Incident or Project Name <b>HOG</b>		Incident Number <b>CA-LMU-003874</b>		Request Number <b>E # Here</b>		Operator #1 <b>Bob Smith</b>					
Operator #2 <b>Jeff Smith</b>		Agreement Number <b>Obtain from vendor's agreement</b>									
Equipment Make <b>CAT</b>		Equipment Model / Type <b>D6N, Type II E</b>				Operator Furnished By: <input checked="" type="checkbox"/> Contractor <input type="checkbox"/> Government					
Serial Number <b>6LN3344</b>		Licence Number				Operating Supplies Furnished By: <input checked="" type="checkbox"/> Contractor <input type="checkbox"/> Government					
Equipment Use (Circle) Hours / Days / Miles					Equipment Status						
Date Mo / Day	Start	Stop	Work	Assignment	<input checked="" type="checkbox"/> Inspected <input checked="" type="checkbox"/> Under Agreement						
7/28	0700	2400	17	Division B	<input type="checkbox"/> Released by Government						
7/29	0001	0700	7	Division B	<input type="checkbox"/> Withdrawn by Contractor						
					Remarks/Comments ** <b>NO DAMAGE / NO CLAIMS</b>						
Vendor Rating					Govt. Rep. Name and Position - PRINT						
<table border="1"> <tr> <td>Poor*</td> <td>Avg.</td> <td>Good</td> <td>Exc.</td> <td>N/A</td> </tr> </table>					Poor*	Avg.	Good	Exc.	N/A	<b>Mike Weber Div. A</b>	
Poor*	Avg.	Good	Exc.	N/A							
Met Performance Expectations					Govt. Rep. Signature <i>Mike Weber</i>						
Equipment in Safe Working Condition					Contractor Signature <i>Bob Smith</i>						
Operator Skill Level					Date <b>07/20/20</b>						
Operates Safely					Time <b>0800</b>						
Operator's Cooperation Level					Date <b>07/20/20</b>						
Overall Performance					Time <b>0800</b>						
<p>* NOTE: Any rating of POOR requires an explanation in Comment Section. **Final evaluation or for more documentation, use an ICS Form 230 or equivalent.</p>					CALFIRE 297 (Rev 3-2011)						
Pink - Finance		Blue - Home Unit HE Coordinator		Yellow - Vendor		White - Govt Representative					

EMERGENCY SHIFT TICKET and EVALUATION FORM					Contractor Name						
The responsible Government Officer will complete this form each shift					Fireline Builders						
Incident or Project Name <b>Hog</b>		Incident Number <b>CA-LMU-003874</b>		Request Number <b>E # Here</b>		Operator #1 <b>Bob Smith</b>					
Operator #2		Agreement Number <b>Obtain from vendor's agreement</b>									
Equipment Make <b>CAT</b>		Equipment Model / Type <b>D6N, Type II E</b>				Operator Furnished By: <input checked="" type="checkbox"/> Contractor <input type="checkbox"/> Government					
Serial Number <b>6LN3344</b>		Licence Number				Operating Supplies Furnished By: <input checked="" type="checkbox"/> Contractor <input type="checkbox"/> Government					
Equipment Use (Circle) Hours / Days / Miles					Equipment Status						
Date Mo / Day	Start	Stop	Work	Assignment	<input checked="" type="checkbox"/> Inspected <input checked="" type="checkbox"/> Under Agreement						
7/28	0001	0700	7	Off Shift	<input type="checkbox"/> Released by Government						
7/28	0701	1900	12	Division B	<input type="checkbox"/> Withdrawn by Contractor						
7/28	1901	2400	5	Off Shift	Remarks/Comments ** <b>NO DAMAGE / NO CLAIMS</b>						
Vendor Rating					Govt. Rep. Name and Position - PRINT						
<table border="1"> <tr> <td>Poor*</td> <td>Avg.</td> <td>Good</td> <td>Exc.</td> <td>N/A</td> </tr> </table>					Poor*	Avg.	Good	Exc.	N/A	<b>Mike Weber Div. A</b>	
Poor*	Avg.	Good	Exc.	N/A							
Met Performance Expectations					Govt. Rep. Signature <i>Mike Weber</i>						
Equipment in Safe Working Condition					Contractor Signature <i>Bob Smith</i>						
Operator Skill Level					Date <b>07/20/20</b>						
Operates Safely					Time <b>0600</b>						
Operator's Cooperation Level					Date <b>07/20/20</b>						
Overall Performance					Time <b>0600</b>						
<p>* NOTE: Any rating of POOR requires an explanation in Comment Section. **Final evaluation or for more documentation, use an ICS Form 230 or equivalent.</p>					CALFIRE 297 (Rev 3-2011)						
Pink - Finance		Blue - Home Unit HE Coordinator		Yellow - Vendor		White - Govt Representative					

# Incident Base Map- Lassen County Fairgrounds



Trailer Row

⑨

⑧

⑩

⑪

⑦

⑥

Briefing

①

②

③

④

⑤

Trailer Row

1. Federal Personnel Time
2. Hotels and Accommodations
3. Time Section Chief/ Equipment Time
4. Incinet
5. Time Unit/ Calfire Time
6. Facilities/ Logistics/ Ordering
7. Finance Section Chief/ Comp Claims
8. Safety/ Operations
9. Incident Commander
10. Law Enforcement Liaison
11. Finance

Jensen Hall

- Situation
- Resources
- Plans
- Demob
- Check In



GROUND SUPPORT  
LMU Headquarters, 697 CA-36, Susanville, CA 96130



For after-hours mechanical needs, call 925-532-5437.



# Travel Map

## HOG INCIDENT

CA-LMU-003874

