

**** CORRECTED ****

INCIDENT ACTION PLAN GOLD INCIDENT

CA-LMU-003917

Sunday



OPERATIONAL PERIOD

8/2/2020 0700

to

8/3/2020 0700

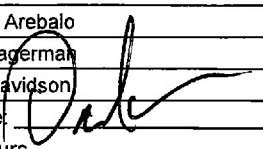


Briefing Frequency - VTAC 13

* * COLLECTED * *



ORGANIZATION ASSIGNMENT LIST (ICS 203)

1. Incident Name: GOLD		2. Operational Period: Date From: 8/2/2020 Time From: 0700		Date To: 8/3/2020 Time To: 0700	
3. Incident Commander(s) and Command Staff:			7. Operation Section:		
IC/UC's	Dave Russell, Mike Crites, Darryl Laws (T), Charlie Blankenheim (T)	Operations	Monty Smith		
Deputy	Eddy Moore	Deputy Operations	Shane Lauderdale		
Safety Officer	Doug Ferro, Bill Murphy (T)	Night Ops	Monty Smith		
Information Officer	Steve Kaufmann, Chris Harvey (T)	Staging Area			
Liaison Officer	Dave Pender, Ron Karlen (T)	Branch	I/III	James Hudson (12), Keith Swope (12) 24	
LELO	Josh Allen, LT. Anthony Bertain	Division/Group	B/D/E/F/G/O	STC 9230C Leader-Jesse Morris	
4. Agency/Organization Representatives:			Division/Group	LOADEN HAAK	
Agency/Organization	Name	Branch	V	Shawn Raley (12), Pat Bennington (12)	
LMU Line Officer	Jim Ferguson	Division/Group	R/W/T	STC 9110C Leader- Michael Crabtree	
CAL OES	Pat Titus	Division/Group			
CCC	Alex Luquin	Branch	Supp Repair	Anderson (12), Stacher (12), Schroeder(12)	
CDCR	Lt. Jeremy Micone	Division/Group	Group I	Dorus Van Goidsenhoven, Shanna Kuempel (T)	
Lassen Co. SO	Dean Growden	Division/Group	Group II	Lucas Titus, Garrett Dean (T)	
Modoc Co. SO	Tex Doway	Division/Group	Group III	Jaime Hidalgo (T), Edwin Simpson	
CHP	Danny Kotsier	Division/Group		PETERSON	
Lassen Co. OES	Silas Rojas	Division/Group	Road Group	Ryan Wimmer	
Modoc Co. OES	Heather Hadwick	Division/Group			
CAL TRANS	Jordan Wymer	Branch			
BLM	Al Savage	Division/Group			
		Division/Group			
		Division/Group			
		Division/Group			
		Division/Group			
		Branch			
5. Planning Section:			Division/Group		
Chief	Chris Burch	Division/Group			
Deputy	David Shy	Division/Group			
Resource Unit	Coby Dyche, Gwyndolyn Ozard, Jim Irving, Brian Torosian (T), David Newell (T)	Division/Group			
Situation Unit	D. O'Neil, D. Guillani, J. Pangburn	Branch			
Documentation Unit	Ginger Haight, Allyson Liang	Division/Group			
Demobilization Unit	Chris Lynch, Matt Brady (T)	Division/Group			
GISS	Suzann Leininger	Division/Group			
FBAN	Tim Chavez	Division/Group			
IMET	Jeff Tonkin	Division/Group			
Training Tech. Spec	Dennis Martin	Air Operations Branch		Director:	Greg Bradshaw
Crew Tech. Spec	Jen Corning	Air Support Group Supervisor		Tim Perkins	
Hired Equip Tech Spec	Tim Bingham	Air Tactical Group Supervisor		Skye McGregor	
6. Logistics Section			Helibase Manager		Ray Gomez
Chief	Matt Reich				
Deputy	Mathew Brandt	8. Finance/Administration Section:			
Supply Unit	Shawn Burris	Chief	Mara Zaver		
Facilities Unit	Travis Heard, Matt Brown (T)	Deputy	Rob Jenkins		
Ground Support Unit	Conor Stapleton	Time Unit	Greg Tunzi		
Communications Unit	Mike Heyfron (T)	Procurement Unit	Courtney Arebalo		
Medical Unit	Darin Nelson, Daniel Hauer	Comp/Claims Unit	Alyssa Hagerman		
Hotel Tech. Spec.	Matt Aldrich	Cost Unit	Angela Davidson		
Prepared By: Name:	David Shy	Position/Title:	PSC	Signature:	
ICS 203		Date/Time:	8/1/2020 2300 hours		

Fire and COVID-19 Briefing Checklist

Self-Awareness / Screening

- Immediately separate yourself from others.
- Notify supervisor if you or others experience:
 - Cough, more than expected
 - Shortness of breath or difficulty breathing
 - New loss of taste or smell
 - Fever
 - Chills
 - Sore throat
 - Muscle pain
- Review and follow crew and division plans to isolate, triage, and transport symptomatic personnel.

Hygiene on the Fireline

- Properly wash or sanitize your hands often, especially before and after eating or entering a public place, and after coughing or sneezing.
- Avoid handshakes and communal use items.
- Maintain a supply of hand sanitizer and hand wipes. Inform supervisor of needed resupply.
- Disinfect high touch surfaces often:
 - Radios, phones, doors, pumps, fuel cans, etc.

Social Distancing and Protective Equipment

- Initiate, practice, and remind others of social distancing.
- Conduct briefings and conversations outdoors and at least 6 feet apart.
- Utilize face coverings as a tool when practical.
- Clean or replace dirty face coverings, equipment, and PPE.

Communications

- Face coverings and social distancing complicate communications. Ensure effective sender/receiver messaging.

Protect yourself, your crew, and your camp!

Find more information: <https://www.nwcg.gov/coronavirus>.

NFES 002646 (06/2020)



Gold Fire Incident Weather Forecast



FORECAST NO: 12 D/N
 PREDICTION FOR: Sunday - 24 Hour Shift
 SHIFT DATE: Aug 2, 2020
 FORECAST ISSUED: 2000 PDT Aug 1, 2020

NAME OF FIRE: Gold Fire
 UNIT: Lassen Modoc
 Incident Meteorologist: Jeff Tonkin

WEATHER DISCUSSION: The dry and consistent weather pattern will continue through Tuesday before an upper level trough begins to influence the region. This feature may bring a new threat of thunderstorms which may persist through Friday. At this time instability does not look strong enough to promote intense storms or widespread coverage but this will need to be monitored.

TODAY (SUNDAY DAYTIME):

WEATHER: Sunny.
 MAX TEMPERATURES: 86 - 91
 MIN HUMIDITY 4500 ft: 11 - 18 %.
 WIND: East and Southeast 3 to 6 mph until 1300...then increasing to West and Southwest 7 to 12 mph with gusts 20-25 mph until 1900 PDT. Winds diminishing thereafter.

LAL: 1 CWR: 0% HAINES: 4
 STABILITY / INVERSION: Unstable.
 SMOKE TRANSPORT WIND: West 15 mph.

TONIGHT:

WEATHER: Clear.
 MIN TEMPERATURES: 45-50.
 MAX HUMIDITY: 50-60%.
 WINDS (EYE LEVEL): Downslope or east 3 to 5 mph.

MONDAY / MONDAY NIGHT: Sunny. Max Temps: 86 - 91. Min RH: 10-15%. Max RH: 50-60%. Wind: Light Southeast early 3 to 6 mph...Becoming West around 1300 and increasing to 7 to 12 with gusts to 20 mph through 1800 PDT. Winds diminishing thereafter.

Extended Forecast	Tue Aug 3	Wed Aug 4	Thu Aug 5	Fri Aug 6
Sky / Wx	Continued Dry	Mostly Sunny Chance Tstomrs	Mostly Sunny Chance Tstomrs	Mostly Sunny Chance Tstomrs
Wind:	W 8-12 mph Gust 20-25 mph	W 6 - 10 mph Gust 15-20 mph	W 4 -8 mph Gust 15 mph	W 6 -10 mph Gust 15 mph
Max Temp / Min RH	85-90° 10-15%	85-90° 13-18%	85-90° 13 -18%	84-89° 15-20%
Min Temp / Max RH	50-55° 55-65%	51-56° 60-70%	55-59° 65-75%	54-58° 52-57%
CWR /Haines/ LAL	0% / 3 / 1	0% / 3 / 2	0% / 4 / 3	0% / 3 / 1

FIRE BEHAVIOR FORECAST

FORECAST NUMBER: 12

TYPE OF FIRE: WILDLAND

FIRE NAME: GOLD

OPERATIONAL PERIOD: 8/2/2020

DATE ISSUED: 8/1/2020

TIME ISSUED: 2000

UNIT: LASSEN-MODOC UNIT, MODOC NF,
AND BLM-NOD

SIGNED: 

Typed/printed: TIM CHAVEZ FBAN

INPUTS

WEATHER SUMMARY: CONTINUED HOT AND DRY. HAINES = 4 SEE IMET FORECAST



THESE QR CODES WILL TAKE YOU TO THE PORTABLE RAW'S STATION DATA. ON THE RIGHT IS FOR GOLD1 WHICH IS ON HWY 139 ABOVE HAYDEN HILL RD. THE LEFT QR IS FOR GOLD2 IN ASH VALLEY.



GENERAL: SUNRISE 0601, SUNSET 2021—14 HOURS 20 MIN DAYLIGHT

FUELS:

- FUEL MOISTURE CONDITIONS ARE CONTINUING TO WORSEN.
- PROBABILITY OF IGNITION 90% AT 1400, 18% AT 0300.
- ENERGY RELEASE COMPONENT OF THE NFDERS IS ABOVE THE 97TH PERCENTILE AND ABOVE HISTORIC MAXIMUM FOR 8/2.
- 100 AND 1000 HOUR FUELS ARE AT THE THIRD PERCENTILE AND BELOW HISTORIC MINIMUMS.
- ON 7/15 BITTERBRUSH LIVE FUEL MOISTURE WAS 120% NEARBY, WELL ABOVE CRITICAL OF 80%. SAGEBRUSH WAS CRITICAL AT 80%.
- THE FIRE AREA HAS NO RECORDED SIGNIFICANT FIRE HISTORY.

TOPOGRAPHY:

- MOST OF THE FIRE IS BETWEEN 4000-6000' ELEVATION.
- MOSTLY PLATEAUS WITH DEEP DRAINAGES. THE MAIN DRAINAGES ARE THE BUTTE CREEK/FOSTER DRAW, ASH CREEK AND WILLOW CREEK.

OUTPUTS

ALL BRANCHES

SINGLE TREE AND SMALL ISLAND TORCHING WILL CONTINUE TO BE AN ISSUE IN THE INTERIOR AS LONG AS THE RELATIVE HUMIDITY REMAINS IN THE TEENS DURING THE DAY. IT IS UNLIKELY THAT ANYTHING WILL THREATEN THE LINE EXCEPT IN DIV O AND R. ROLLOUT MAY BE AN ISSUE IN DIV T, AS THE SLOPE IS STEEP TO HWY 139.

AIR OPERATIONS:

LITTLE FIRE ACTIVITY AND NO SMOKE GENERATION. VISIBILITY GOOD ALL DAY.

SAFETY

- SOME TIMBER HAS BEEN SMOLDERING BELOW GROUND OR SMOLDERING WITHIN FOR DAYS. THESE WILL FALL WITHOUT WARNING, EVEN IF THEY APPEAR TO BE UN BURNED ON THE OUTSIDE.
- WATER DROPS FROM AIRCRAFT WILL BREAK BRANCHES OR FALL ENTIRE TREES. STAY CLEAR!
- THERE STILL MAY BE SOME HOLDOVER FIRES FROM LAST WEEK'S LIGHTNING. REMEMBER TO ANCHOR AND FLANK IF ASSIGNED TO A NEW IA FIRE.

ASSIGNMENT LIST (ICS 204 WF)

CONTROLLED UNCLASSIFIED
INFORMATION//BASIC

1. Incident Name: <p style="text-align: center; font-weight: bold;">GOLD</p>	2. Operational Period: Date From: 08/02/20 Date To: 08/03/20 Time From: 0700 Time To: 0700	3. Branch Division <p style="text-align: center; font-weight: bold;">I/III B/D/E/F/G/O</p>
4. Operations Personnel:		Page 1 of 1 ECHO

Operations Section Chief: Monty Smith	Night Ops: Monty Smith
Branch Director: James Hudson (12), Keith Swope (12)	Branch Safety: Douglas Stuart
Division/Group Supervisor: STC 9230C Leader - Jesse Morris LADEN HARK	Air Attack: Skye McGregor

5. Resources Assigned:		** Resources Below in Bold are 12 Hour **					
Resource Identifier	ALS	LWD	Leader	Personnel	Request #	Hours	Reporting Location
**STC NEU 9230C		8/1	HAACK	20 +/-	E-334	0700-0700	DP5
**STC SKU 9260C		7/26	CUNNINGHAM, KENT	18 +/-	E-335	0700-1900	DP5
STC LNU 9146C		8/2	ARAGON, CHRIS	16	E-13	0700-1900	DP5
**STG LMU 9220G			McKINNY	32	C-9	0700-1900	DP5
STG SHU 9240G			HAGAN, JEFFREY O	33 +/-	C-13	0700-1900	DP5
**CRW2 C-5 LMU CREW1A		8/2	WOODWARD, LUKE	9	C-5	0700-1900	DP5
CRW2 C-14 REFOREST		8/5	RINCON, JOSE	20	C-14	0700-1900	DP5
CRW2 C-15 WEST COAST			TORRES, LEONARDO	20	C-15	0700-1900	DP5
CRW2 C-16 REFOREST			RINCON, JOSE	20	C-16	0700-1900	DP5
W/T PVT E-23 - SHERER			RICHARDSON, DON	2	E-23	0700-0700	DP5
W/T PVT E-27 - ACKLEY			RAY ACKLEY	1	E-27	0700-1900	DP5
W/T PVT E-142 - TRAFFIC		8/5	FORDE, BOB	1	E-142	0700-1900	DP5
W/T PVT E-144 - GOLDEN STATE			BALES, CODY	1	E-144	0700-1900	DP5
**W/T PVT E-151 - DARRAH			KAUNDART, DAVE	1	E-151	0700-1900	DP5

6. Work Assignments:
 #6 Hold Fire within established Control Lines.
 #11 Mop up all visable smokes.
 #14 Back Haul Excess Trash/Hose/Water.

7. Special Instructions:
 **Resources TENTATIVELY identified for the 3-day IAP 8/3-8/5.

8. Communications

Name	Ch	Function	Rx Freq	Rx Tone	Tx Freq	Tx Tone	Notes
NIFC C2	1	COMMAND	170.4500	123.0 (T2)	168.1000	123.0 (T2)	HAYDEN HILL
CDF T13	6	TACTICAL	151.3775	192.8 (T16)	151.3775	192.8 (T16)	BRANCH I/III
A/G CDF T24	14	TACTICAL	151.3325	192.8 (T16)	151.3325	192.8 (T16)	*** AIR TO GROUND ***
CALCORD	15	MEDICAL	156.0750	156.7 (T6)	156.0750	156.7 (T6)	
GUARD 27	16	EMERGENCY	168.6250		168.6250	110.9 (T1)	EMERGENCY USE ONLY

9. Prepared by: Name:	David Newell	RESL(T)	
Signature:			
ICS 204	Date/Time: 8/1/2020	2200	Personnel Count: 194

ASSIGNMENT LIST (ICS 204 WF)

CONTROLLED UNCLASSIFIED
INFORMATION//BASIC

1. Incident Name: <p style="text-align: center; font-size: 1.2em;">GOLD</p>	2. Operational Period: Date From: 08/02/20 Date To: 08/03/20 Time From: 0700 Time To: 0700	3. Branch Division <p style="text-align: center; font-size: 1.5em;">V</p> R/W/T <p style="text-align: center;">Page 1 of 1 WHISKY</p>
--	---	---

4. Operations Personnel: Operations Section Chief: Monty Smith Branch Director: Shawn Raley (12), Pat Bennington (12) Division/Group Supervisor: STC 9110C Leader- Michael Crabtree	Night Ops: Monty Smith Branch Safety: Jason Ralls Air Attack: Skye McGregor
--	--

5. Resources Assigned:		** Resources Below in Bold are 12 Hour **					
Resource Identifier	ALS	LWD	Leader	Personnel	Request #	Hours	Reporting Location
STC MEU 9110C		7/27	CRABTREE, MICHAEL	18 +/-	E-365	0700-0700	DP1
STC SCU 9160C		7/14	COLLINS, CRAIG	18 +/-	E-364	0700-1900	DP1
**STG LMU 9222G			ETTER, KEITH	32	C-43	0700-1900	DP1
STG SHU 9244G			TAVALERO, GREGORY	33 +/-	C-44	0700-1900	DP1
CRW2 C-20 GRIZZLY			HINER, THEODORE	20	C-20	0700-1900	DP1
CRW2 C-21 OREGON WOODS			ALFORD	20	C-21	0700-1900	DP1
**STL SHU 9242L → DEMOB		8/1	QUIGLEY, GARRETT	7	E-80	0700-0700	DP1
W/T1 PVT E-284 - NORTHSTAT			PIERCE, DICKSON	2	E-284	0700-0700	DP1
**W/T1 PVT E-286 - TOUGH			MARK HAMILTON	2	E-286	0700-1900	DP1
**W/T1 PVT E-292 - FORTNER			FORTNER, TRAVIS	2	E-292	0700-1900	DP1
W/T1 PVT E-294 - GENE			HOWARD, TRYSTAN	2	E-294	0700-1900	DP1
**W/T1 PVT E-349 - ALGERINE			WARREN, DAVID	1	E-349	0700-1900	DP1
FALM PVT O-334 NORTH ZONE			BURG, GARY	2	O-334	0700-1900	DP1
CRW2 C-12 PACIFIC OASIS ← FROM GRP III							
CRW2 C-34 INBOUND ← FROM GRP III							
CRW2 C-35 INBOUND ← FROM GRP III							

6. Work Assignments:
 #6 Hold Fire within established Control Lines.
 #11 Mop up all visible smokes.
 #14 Back Haul Excess Trash/Hose/Water.

7. Special Instructions:
 **Resources TENTATIVELY identified for the 3-day IAP 8/3-8/5.

8. Communications							
Name	Ch	Function	Rx Freq	Rx Tone	Tx Freq	Tx Tone	Notes
NIFC C2	1	COMMAND	170.4500	123.0 (T2)	168.1000	123.0 (T2)	HAYDEN HILL
CDF T27	7	TACTICAL	159.3075	192.8 (T16)	159.3075	192.8 (T16)	BRANCH V
A/G CDF T24	14	TACTICAL	151.3325	192.8 (T16)	151.3325	192.8 (T16)	*** AIR TO GROUND ***
CALCORD	15	MEDICAL	156.0750	156.7 (T6)	156.0750	156.7 (T6)	
GUARD 27	16	EMERGENCY	168.6250		168.6250	110.9 (T1)	EMERGENCY USE ONLY

9. Prepared by: Name: David Newell	RESL(T)	Signature:
ICS 204	Date/Time: 8/1/2020 2200	Personnel Count: 159

ASSIGNMENT LIST (ICS 204 WF)

CONTROLLED UNCLASSIFIED
INFORMATION//BASIC

1. Incident Name: <p style="text-align: center; font-size: 1.2em;">GOLD</p>	2. Operational Period: Date From: 08/02/20 Date To: 08/03/20 Time From: 0700 Time To: 0700	3. Branch Division <p style="text-align: center; font-size: 1.2em;">Supp Repair Group I</p>
4. Operations Personnel:		Page 1 of 1

Operations Section Chief: Monty Smith	Night Ops: Monty Smith
Branch Director: Anderson (12), Stacher (12), Schroeder(12)	Branch Safety:
Division/Group Supervisor: Dorus Van Goidsenhoven, Shanna Kuempel (T)	Air Attack: Skye McGregor

5. Resources Assigned:		** All Resources are on a 12 Hours Shift **					
Resource Identifier	ALS	LWD	Leader	Personnel	Request #	Hours	Reporting Location
STC HUU 9120C			MCLAUGHLIN, RON	18 +/-	E-298	0700-1900	ICP
**CRW2 C-17 OASIS		8/5	FINCH, DEREK	1	C-17	0700-1900	ICP
DOZ PVT E-176 - NORTHSTATE		8/4	WYLIE, MITCHELL	1	E-176	0700-1900	ICP
DOZ PVT E-273 - BACKWOODS			JUNGWIRTH, JERRY	1	E-273	0700-1900	ICP
DOZ PVT E-275 - COTTON			MAZZOTTA, ZAC	1	E-275	0700-1900	ICP
DOZ PVT E-282 - M. PETERS			WELDON, CODY	1	E-282	0700-1900	ICP
MAS PVT E-374 - T & S DVBE			LANDALE, JASON	1	E-374	0700-1900	ICP
MAS PVT E-381 CLAYTON			CLAYTON, GRAHAM	1	E-381	0700-1900	ICP
FALM PVT O-266 - MOD SAW → DEMOB			STACHER, NICK	2	O-266	0700-1900	ICP
FALM PVT O-332 BUCK MASON → DEMOR			MASON, JEREMY	2	O-332	0700-1900	ICP
FOBS(T) MCBRIDE		8/5	MCBRIDE, IAN	1	O-83	0700-1900	ICP
READ MUELLER			MUELLER, ANDREW	1	O-297	0700-1900	ICP
FRS MATTEWSON							

6. Work Assignments:
Identify and document suppression repair needs.
Implement suppression repair plan.

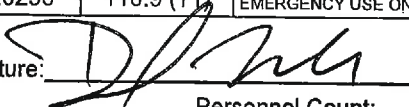
7. Special Instructions:
All resources 12hr
**Resources TENTATIVELY identified for the 3-day IAP 8/3-8/5.

8. Communications							
Name	Ch	Function	Rx Freq	Rx Tone	Tx Freq	Tx Tone	Notes
NIFC C2	1	COMMAND	170.4500	123.0 (T2)	168.1000	123.0 (T2)	HAYDEN HILL
CDF T28	8	TACTICAL	151.1825	192.8 (T16)	151.1825	192.8 (T16)	Suppression Repair
A/G CDF T24	14	TACTICAL	151.3325	192.8 (T16)	151.3325	192.8 (T16)	*** AIR TO GROUND ***
CALCORD	15	MEDICAL	156.0750	156.7 (T6)	156.0750	156.7 (T6)	
GUARD 27	16	EMERGENCY	168.6250		168.6250	110.9 (T1)	EMERGENCY USE ONLY

9. Prepared by: Name:	David Newell	RESL(T)	Signature:
ICS 204	Date/Time: 8/1/2020	2200	Personnel Count: 31

ASSIGNMENT LIST (ICS 204 WF)

CONTROLLED UNCLASSIFIED
INFORMATION//BASIC

1. Incident Name: <p style="text-align: center; font-size: 1.2em;">GOLD</p>		2. Operational Period: Date From: 08/02/20 Date To: 08/03/20 Time From: 0700 Time To: 0700				3. Branch Division <p style="text-align: center; font-size: 1.2em;">Supp Repair Group II</p>	
4. Operations Personnel:		Page 1 of 1					
Operations Section Chief: Monty Smith		Night Ops: Monty Smith					
Branch Director: Anderson (12), Stacher (12), Schroeder(12)		Branch Safety:					
Division/Group Supervisor: Lucas Titus, Garrett Dean (T)		Air Attack: Skye McGregor					
5. Resources Assigned:		** All Resources are on a 12 Hours Shift **					
Resource Identifier	ALS	LWD	Leader	Personnel	Request #	Hours	Reporting Location
**CRW2 C-18 OASIS			DIETZ, WILLIAM	20	C-18	0700-1900	ICP
DOZ PVT E-9 - THOMPSON			SAM THOMPSON	2	E-9	0700-1900	ICP
DOZ PVT E-18 - OILAR			WHITE, JAMES	2	E-18	0700-1900	ICP
DOZ PVT E-19 - BUSHEY			WARD, LEE	2	E-19	0700-1900	ICP
DOZ PVT E-20 - SHERER			SHERER, JIM	2	E-20	0700-1900	ICP
DOZ PVT E-167 - NORTHSTATE		8/4	RODRIGUE, DANA	2	E-167	0700-1900	ICP
DOZ PVT E-274 - MATANDY			HARKNESS, MATT	2	E-274	0700-1900	ICP
DOZ PVT E-278			NEWSOM, RANDY	2	E-278	0700-1900	ICP
DOZ PVT E-280 - LEPAGE			GREER, MIKE	2	E-280	0700-1900	ICP
DOZ PVT E-281 - PRODUMP			MUCCULIF, TODD	2	E-281	0700-1900	ICP
EXC PVT E-220 - HOLT LOGGING			HARDIG, PAUL	1	E-220	0700-1900	ICP
MAS PVT E-376 - HERTZIG			HERTZIG, JOHN	1	E-376	0700-1900	ICP
**HEQB SHERFY			SHERFY, CHRISTIAN	1	O-315	0700-1900	ICP
FOBS BULLOCK			BULLOCK, SCOTT	1	O-85	0700-1900	ICP
FRSR(T) MCNICHOLAS			MCNICHOLAS, MICHAEL	1	O-391	0700-1900	ICP
FOBS MCDANIEL → TO GAP III			MCDANIEL, PATRICK	1	O-420	0700-1900	ICP
FOBS FAZIO							
6. Work Assignments: Identify and document suppression repair needs. Implement suppression repair plan.							
7. Special Instructions: All resources 12hr **Resources TENTATIVELY identified for the 3-day IAP 8/3-8/5.							
8. Communications							
Name	Ch	Function	Rx Freq	Rx Tone	Tx Freq	Tx Tone	Notes
NIFC C2	1	COMMAND	170.4500	123.0 (T2)	168.1000	123.0 (T2)	HAYDEN HILL
VTAC12	9	TACTICAL	154.4525	156.7 (T6)	154.4525	156.7 (T6)	Suppression Repair
AVG CDF T24	14	TACTICAL	151.3325	192.8 (T16)	151.3325	192.8 (T16)	*** AIR TO GROUND ***
CALCORD	15	MEDICAL	156.0750	156.7 (T6)	156.0750	156.7 (T6)	
GUARD 27	16	EMERGENCY	168.6250		168.6250	110.9 (T1)	EMERGENCY USE ONLY
9. Prepared by: Name:		David Newell		RESL(T)		Signature: 	
ICS 204		Date/Time: 8/1/2020 2200		Personnel Count: 44			

NIMS IAP

CONTROLLED UNCLASSIFIED INFORMATION//BASIC

ASSIGNMENT LIST (ICS 204 WF)

CONTROLLED UNCLASSIFIED
INFORMATION//BASIC

1. Incident Name: <p style="text-align: center; font-weight: bold;">GOLD</p>	2. Operational Period: Date From: 08/02/20 Date To: 08/03/20 Time From: 0700 Time To: 0700	3. Branch Division <p style="text-align: center; font-weight: bold;">Supp Repair Group III</p>
4. Operations Personnel:		Page 1 of 2

Operations Section Chief: Monty Smith	Night Ops: Monty Smith
Branch Director: Anderson (12), Stacher (12), Schroeder(12)	Branch Safety:
Division/Group Supervisor: Jaime Hidalgo (T), Edwin Simpson	Air Attack: Skye McGregor

5. Resources Assigned:	** All Resources are on a 12 Hours Shift **						
Resource Identifier	ALS	LWD	Leader	Personnel	Request #	Hours	Reporting Location
**CRW2 C-19 OASIS → TO R/W/T			DODDS, LELAND	20	C-19	0700-1900	ICP
**CRW2 C-34 INBOUND → TO R/W/T			KIGER, CHRISTOPHER	20	C-34	0700-1900	ICP
**CRW2 C-35 INBOUND → TO R/W/T			NETTLESHIP, WES	20	C-35	0700-1900	ICP
DOZ PVT E-165 - ALGERINE			BURNS, TIM	2	E-165	0700-1900	ICP
DOZ PVT E-166 - NORTHSTATE			NICKELL, CORY	2	E-166	0700-1900	ICP
DOZ PVT E-271 - ACT			EILTS, JON	2	E-271	0700-1900	ICP
DOZ PVT E-272 - SCHREDER			HALL, CORY	2	E-272	0700-1900	ICP
DOZ PVT E-277 - ERIC			SPRATT, ERIC	2	E-277	0700-1900	ICP
DOZ PVT E-279 - SALINAS			RAMIREZ, AARON	2	E-279	0700-1900	ICP
DOZ PVT E-343 - MILLER			MILLER, HAROLD	2	E-343	0700-1900	ICP
EXC PVT E-221 - PETERS INC			PETERS, MIKE	1	E-221	0700-1900	ICP
EXC PVT E-222 - COLEMAN			COLEMAN, JOE	1	E-222	0700-1900	ICP
EXC PVT E-379 - RMB			HELM, JOSH	1	E-379	0700-1900	ICP
EXC PVT E-380			FERRI, LEIF	1	E-380	0700-1900	ICP
MAS PVT E-218 - BUCK TRKNG			LASSEN, STEVE	1	E-218	0700-1900	ICP
MAS PVT E-387 - SUNRISE			WILLIAMS, BRANDON	1	E-387	0700-1900	ICP
W/T PVT E-24 - INGRAHAM → RD GRP			INGRAHAM, BRIAN	2	E-24	0700-1900	ICP
W/T1 PVT E-290 - T & S DVBE → RD GRP			JONES, ROBERT	2	E-290	0700-1900	ICP

6. Work Assignments:
Identify and document suppression repair needs.
Implement suppression repair plan.

7. Special Instructions:
All resources 12hr
**Resources TENTATIVELY identified for the 3-day IAP 8/3-8/5.

8. Communications							
Name	Ch	Function	Rx Freq	Rx Tone	Tx Freq	Tx Tone	Notes
NIFC C2	1	COMMAND	170.4500	123.0 (T2)	168.1000	123.0 (T2)	HAYDEN HILL
CDF T32	10	TACTICAL	151.2425	192.8 (T16)	151.2425	192.8 (T16)	Suppression Repair
A/G CDF T24	14	TACTICAL	151.3325	192.8 (T16)	151.3325	192.8 (T16)	*** AIR TO GROUND ***
CALCORD	15	MEDICAL	156.0750	156.7 (T6)	156.0750	156.7 (T6)	
GUARD 27	16	EMERGENCY	168.6250		168.6250	110.9 (T1)	EMERGENCY USE ONLY

9. Prepared by: Name:	David Newell	RESL(T)	Signature:
ICS 204	Date/Time: 8/1/2020	2200	Personnel Count: 84

ASSIGNMENT LIST (ICS 204 WF)

CONTROLLED UNCLASSIFIED
INFORMATION/BASIC

1. Incident Name: <p style="text-align: center; font-size: 1.2em;">GOLD</p>		2. Operational Period: Date From: 08/02/20 Date To: 08/03/20 Time From: 0700 Time To: 0700				3. Branch <p style="text-align: center; font-size: 1.2em;">Supp Repair</p>		Division <p style="text-align: center; font-size: 1.2em;">Road Group</p>	
4. Operations Personnel:						Page 1 of 1			
Operations Section Chief: Monty Smith					Night Ops: Monty Smith				
Branch Director: Anderson (12), Stacher (12), Schroeder(12)					Branch Safety:				
Division/Group Supervisor: Ryan Wimmer					Air Attack: Skye McGregor				
5. Resources Assigned:		** All Resources are on a 12 Hours Shift **							
Resource Identifier	ALS	LWD	Leader	Personnel	Request #	Hours	Reporting Location		
GDR PVT E-224 - LAMB			LAMB, CODY	1	E-224	0700-1900	ICP		
GDR PVT E-225 - M. PETERS			PETERS, MIKE	1	E-225	0700-1900	ICP		
W/T PVT E-143 - FORD		8/3	FORD, GARY	2	E-143	0700-1900	ICP		
W/T PVT E-145 - HILLTOP		8/4	TRAUMILLER, JUSTIN	2	E-145	0700-1900	ICP		
W/T1 PVT E-291 - BENS			HALE, CARL	2	E-291	0700-1900	ICP		
W/T1 PVT E-295 - BENS			MCCARTY, GREG	2	E-295	0700-1900	ICP		
W/T1 PVT E-348 - BOB			FOURBY, SHAWN	2	E-348	0700-1900	ICP		
W/T PVT E-350 - WATER DOGS			EPPERSON, JEFF	2	E-350	0700-1900	ICP		
**W/T PVT E-351 - WATER DOGS			CHIDEY, ALLEN	1	E-351	0700-1900	ICP		
W/T PVT E-352 - USC SUPPLY			MOULTRIE, JAMES	2	E-352	0700-1900	ICP		
W/T PVT E-353 - MARIAH			DOOLING, MIKE	2	E-353	0700-1900	ICP		
W/T2 PVT E-354 - WELLS			WELLS, JEFF	2	E-354	0700-1900	ICP		
W/T2 PVT E-355 - COTTON			HANSCOM, NIEL	2	E-355	0700-1900	ICP		
W/T2 PVT E-367 - FIRE			CURRY, KEITH	2	E-367	0700-1900	ICP		
FALM O-265 - LONE PINE			RANDY	2	O-265	0700-1900	ICP		
FOBS HUANG			HUANG, JESSICA	1	O-416	0700-1900	ICP		
W/T PVT E-24 ← FROM GPP III									
W/T PVT E-290 ← FROM GPP III									
6. Work Assignments: Identify and document suppression repair needs Implement suppression repair plan.									
7. Special Instructions: All resources 12hr **Resources TENTATIVELY identified for the 3-day IAP 8/3-8/5.									
8. Communications									
Name	Ch	Function	Rx Freq	Rx Tone	Tx Freq	Tx Tone	Notes		
NIFC C2	1	COMMAND	170.4500	123.0 (T2)	168.1000	123.0 (T2)	HAYDEN HILL		
VTAC11	6	TACTICAL	151.1375	156.7 (T6)	151.1375	156.7 (T6)	Suppression Repair		
A/G CDF T24	14	TACTICAL	151.3325	192.8 (T16)	151.3325	192.8 (T16)	*** AIR TO GROUND ***		
CALCORD	15	MEDICAL	156.0750	156.7 (T6)	156.0750	156.7 (T6)			
GUARD 27	16	EMERGENCY	168.6250		168.6250	110.9 (T1)	EMERGENCY USE ONLY		
9. Prepared by: Name:		David Newell			RESL(T)		Signature:		
ICS 204		Date/Time: 8/1/2020		2200		Personnel Count: 28			

NIMS IAP

CONTROLLED UNCLASSIFIED INFORMATION/BASIC



SAFETY MESSAGE

GOLD



20-CA-LMU-0003917 August 02, 2020 0700-0700

UNDERSTANDING THE PLAN

Multiple Agencies Working in Coordination

S
A
F
E
T
Y

Watch Out

- Operational briefing not being passed down to lowest level
- Objectives not clear
- Lack of participation at briefings

Mitigations

- Leaders have the responsibility to provide complete briefings and ensure that subordinates have a clear understanding of their intent
- All personnel who have not received a briefing shall notify their direct supervisor prior to engaging
- Supervisors will ensure briefings are attended

E
V
E
R
Y
O
N
E
S

Chainsaw Felling Accidents

IDENTIFY HAZARDS / WORK WITHIN QUALIFICATION / CONSIDER ALTERNATIVES

- Tree hang-ups account for 25% of felling fatalities. When a tree you are working on becomes a hang-up, reconsider the risks to personnel safety and consider alternatives and mitigations.
- Are you qualified and confident with felling assignment?
- All sawyers have the authority to decline a felling assignment if they feel it is unsafe. Or if the assignment exceeds their training, qualification or experience.
- Consider alternatives to felling hazard trees.
 - Utilize heavy equipment to remove the hazard
 - Restrict access
 - Notify and Utilize signs/flagging to communicate the hazard
- Bucking operations can also be hazardous. Alternatives can also be used for bucking operations (e.g. use mitigation measures to restrict access, use heavy equipment, decline assignment if here are no mitigations).

R
E
S
P
O
N
S
I
B
I
L
I
T
Y

COVID-19

REDUCE THE EXPOSURE AND SPREAD BY:

- Wearing a face covering when you're less than 6 feet from others
- Washing your hands frequently, for at least 20-seconds at a time
- ONLY 3 people seated and spaced per table in the dining area

S
A
F
E
T
Y


S
A
F
E
T
Y

Douglas M Ferro

CAL FIRE IMT 4 SAFETY

REMAIN FIRE FOCUSED BUT COVID AWARE

ICS 205 - INCIDENT RADIO COMMUNICATIONS PLAN

1. Incident Name: GOLD GUARD 27 BANK A		2. Date/Time Prepared Date: 08/01/2020 Time: 1930		3. Operational Period: Date From: 08/02/20 Time From: 0700		Date To: 08/03/20 Time To: 0700		
4. Communications								
Ch#	Function	Name	Assigned To	Rx Freq	Rx Tone	Tx Freq	Tx Tone	Notes
1	COMMAND	NIFC C2	ALL DIVS	170.4500	123.0 (T2)	168.1000	123.0 (T2)	HAYDEN HILL
2	COMMAND	NIFC C8	ALL DIVS	169.5375	123.0 (T2)	164.7125	123.0 (T2)	LIKELY MTN
3	COMMAND	NIFC C9	ALL DIVS	170.0125	123.0 (T2)	165.2500	123.0 (T2)	MANZANITA LO
4	COMMAND	NIFC C23	ALL DIVS	172.1375	123.0 (T2)	166.9375	123.0 (T2)	WIDOW
5	COMMAND	NIFC C24	ALL DIVS	170.0500	123.0 (T2)	163.1500	123.0 (T2)	COYOTE PEAK
6	TACTICAL	CDF T13	DIV. B/D/E/F/G/O	151.3775	192.8 (T16)	151.3775	192.8 (T16)	BRANCH VIII
7	TACTICAL	CDF T27	DIV RW/T	159.3075	192.8 (T16)	159.3075	192.8 (T16)	BRANCH V
8	TACTICAL	CDF T28	Group I	151.1825	192.8 (T16)	151.1825	192.8 (T16)	Suppression Repair
9	TACTICAL	VTAC12	Group II	154.4525	156.7 (T6)	154.4525	156.7 (T6)	Suppression Repair
10								
11								
12								
13								
14	TACTICAL	A/G CDF T24	ALL DIVS	151.3325	192.8 (T16)	151.3325	192.8 (T16)	*** AIR TO GROUND ***
15	MEDICAL	CALCORD	ALL DIVS	156.0750	156.7 (T6)	156.0750	156.7 (T6)	
16	EMERGENCY	GUARD 27	EMERGENCY	168.6250		168.6250	110.9 (T1)	EMERGENCY USE ONLY
17								
18								
19								
20	EMERGENCY	GUARD 27	EMERGENCY	168.6250		168.6250	110.9 (T1)	EMERGENCY USE ONLY
5. Special Instructions CURRENT CLONE FOR August 2, 2020 "GUARD 27" Com Van contact 707-327-6529								
6. Prepared by (Communications Unit Leader): Name: MIKE HEYFRON - COM1			Signature: 		Date/Time: 08/01/20 1930		NIMS IAP	

ICS 205 - INCIDENT RADIO COMMUNICATIONS PLAN

1. Incident Name: GOLD GUARD 27 BANK B	2. Date/Time Prepared Date: 08/01/2020 Time: 1930	3. Operational Period: Date To: 08/03/20 Time To: 0700
---	--	---

4. Communications									
Ch#	Function	Name	Assigned To	Rx Freq	Rx Tone	Tx Freq	Tx Tone	Notes	
1	COMMAND	NIFC C2	ALL DIVS	170.4500	123.0 (T2)	168.1000	123.0 (T2)	HAYDEN HILL	
2	COMMAND	NIFC C8	ALL DIVS	169.5375	123.0 (T2)	164.7125	123.0 (T2)	LIKELY MTN	
3	COMMAND	NIFC C9	ALL DIVS	170.0125	123.0 (T2)	165.2500	123.0 (T2)	MANZANITA LO	
4	COMMAND	NIFC C23	ALL DIVS	172.1375	123.0 (T2)	166.9375	123.0 (T2)	WIDOW MTN	
5	COMMAND	NIFC C24	ALL DIVS	170.0500	123.0 (T2)	163.1500	123.0 (T2)	COYOTE PEAK	
6	TACTICAL	VTAC11	Road Group	151.1375	156.7 (T6)	151.1375	156.7 (T6)	Suppression Repair	
7									
8									
9	TACTICAL	VTAC 13	MORNING BRIEFING	158.7375	156.7 (T6)	158.7375	156.7 (T6)		
10	TACTICAL	CDF T32	Group III	151.2425	192.8 (T16)	151.2425	192.8 (T16)	Suppression Repair	
11									
12									
13									
14	TACTICAL	A/G CDF T24	ALL DIVS	151.3325	192.8 (T16)	151.3325	192.8 (T16)	*** AIR TO GROUND***	
15	MEDICAL	CALCORD	ALL DIVS	156.0750	156.7 (T6)	156.0750	156.7 (T6)		
16	EMERGENCY	GUARD 27	EMERGENCY	168.6250		168.6250	110.9 (T1)	EMERGENCY USE ONLY	
17									
18									
19									
20	EMERGENCY	GUARD 27	EMERGENCY	168.6250		168.6250	110.9 (T1)	EMERGENCY USE ONLY	

5. Special Instructions

CURRENT CLONE FOR August 2, 2020 "GUARD 27" Com Van contact 707-327-6529

Prepared by (Communications Unit Leader): Name: MIKE HEYFRON - COML	Signature: 
ICS 205 - CONTROLLED UNCLASSIFIED INFORMATION/BASIC	NIMS IAP Date/Time: 08/01/20 1930

COMS Map

Gold Incident
CA-LMU-003917



NIFC C23

Widow Mtn. C23

Ground Support

Widow Link

Repeater L2

NIFC C8

Likely Mtn. C8

NIFC C9

Manzanita Lookout C2

Manzanita Lookout C2

NIFC C23

Widow Mtn. C23

Ground Support

Widow Link

Repeater L2

NIFC C8

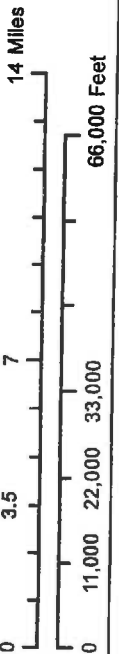
Likely Mtn. C8

NIFC C9

Manzanita Lookout C2

Manzanita Lookout C2

Rodgers
7/31/2020 @ 8:32:01 PM
MAD 83



- Incident Command Post
- Staging Area
- Drop Point
- Water Source
- Helibase
- Helispot
- Spot Fire
- Other
- Dip Site
- Uncontrolled Fire Edge
- Completed Fire Line
- Completed Dozer Line
- Proposed Dozer Line

MEDICAL PLAN ICS 206	INCIDENT NAME	DATE & TIME PREPARED	OPERATIONAL PERIOD
	GOLD	8/1/2020 1700HRS	8/2/20-8/03/20 0700-0700HRS

MEDICAL AID STATIONS

NAME	LOCATION	CONTACT NUMBER	SERVICE LEVEL
CAL-MAT	Incident Base	916-622-3371	RN/MD

TRANSPORTATION (Indicate air or ground)

NAME	LOCATION	CONTACT NUMBER	SERVICE LEVEL
Semsa Ground Ambulance	Susanville, CA.	530-257-5575	ALS
Semsa Air Ambulance	Susanville & Adin CA	530-257-5575	RN
CAL FIRE C202	Bieber, CA.	530-257-5575	BLS

INCIDENT AMBULANCES

Mountain Medics Ambulance**12HR**	DP1	4x4 ALS Fireline Qualified Ambulance
-----------------------------------	-----	--------------------------------------

HOSPITALS

NAME	ADDRESS	PHONE #	TRAVEL TIME- minutes		Trauma Center	Burn Center	Helipad
			AIR	GROUND			
Banner Lassen Hospital	1800 Spring Ridge Rd Susanville, CA	530-252-2238	22	55	No	<input type="checkbox"/> No	<input checked="" type="checkbox"/> Yes
Mercy Medical Center	2175 Rosaline Ave. Redding, CA.	530-225-7201	35	120	Level 2	<input type="checkbox"/> No	<input checked="" type="checkbox"/> Yes
U.C Davis Medical Center	2315 Stockton Blvd. Sacramento, CA.	916-734-3790	70	275	Level 1	<input checked="" type="checkbox"/> Yes	<input checked="" type="checkbox"/> Yes

MEDICAL EMERGENCY PROCEDURES


LINE EMERGENCY:
 Crew Supervisor will contact Division Supervisor with patient complaint/condition and location.
 - Division Group Supervisor Contacts:
 1. Closest EMS resource
 2. Communications Unit
 - Communications Unit Contacts:
 1. Ground or Air Ambulance as requested.
 2. Medical Unit (916) 622-3371
 3. Safety
 4. Operations
 - Division Supervisor or designee will serve as point of contact and run medical emergency on assigned channel.
 1. A pre-assigned tactical frequency (CALCORD) should be used for IWI and only for duration of the emergency.
 - Communications Unit will clear the Command channel for emergency traffic as needed for duration of the need.


CAMP EMERGENCY:
 Contact Communications on CALCORD or @ 707-890-6317 with patient complaint/condition and location. Communications will respond appropriate medical response.
 - Communications contacts:
 1. Medical Unit
 2. Safety
 3. Logistics
 4. Operations
 5. Crew Supervisor
 6. Comp/Claims

INCIDENT REPORTING PROCEDURES

CHIEF COMPLAINT _____
 LOCATION OF PATIENT _____
 POINT OF CONTACT _____
 TRANSPORTATION REQUESTED BY: AIR ___ GROUND ___
 POINT OF PICKUP _____
 LAT _____ LONG _____
 PATIENT UNIT ID _____
 IS A LINE MEDIC WITH THE PATIENT: YES ___ NO ___
 AGE _____
 SEX: MALE ___ FEMALE ___
 ALL EMERGENCIES—Secure the area and identify witnesses for later investigation. Keep an accurate log of events.

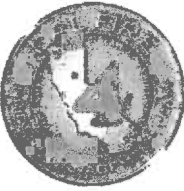
HOSPITAL	LAT	LONG
BANNER LASSEN	40 26.27	120 37.67
MERCY MEDICAL	41 19.11	122 19.20
U.C DAVIS	38 33.28	121 27.35

PREPARED BY: (Medical Unit Leader) Darin Nelson Signature: 

APPROVED BY: (Safety Officer) Doug Ferro Signature: 

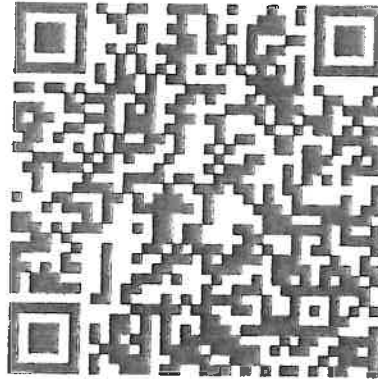


INFORMATION



(530)505-1165

Please scan the QR Below for CAL FIRE's Social Media Policy 0691.



INCIDENT MAIL

The PIO Trailer will receive mail/packages shipped to the Incident. Please ensure all mail addressed to the incident follows the format below:

**(YOUR NAME, YOUR ORDER NUMBER)
C/O GOLD INCIDENT BASE CAMP
PUBLIC INFORMATION TRAILER
INTER MOUNTAIN FAIR
44218 A ST., McARTHUR, CA 96056**

LOST AND FOUND

Any items that are found, please bring them to the PIO Trailer located at the entrance to Base Camp and leave them with PIO staff, please leave your name and contact information and description of items lost so we can attempt to reunite you with your items.



DMOB

GOLD INCIDENT
CA – LMU – 003917

- Resources must check-in prior to the Demobilization process.
- In order to be deemed excess, supervisors must submit an ICS 213 to the Resources Unit.
- Resources report to the Demobilization Unit at the times posted on the tentative DMOB list, which is posted around the Incident Base and to the Box account.
- Prior to reporting to DMOB, please return all supplies and equipment.
- Resources will get signatures from the following units:
 - Ground Support (Vehicle Inspection)
All rental vehicles MUST be inspected
 - Training (If they have a trainee)
 - Documentation
 - Time
 - DMOB
- The following will be done by radio at DMOB
 - Motels
 - Supply
 - Communications

Gold Incident
Demobilization Plan
CA-LMU-003917
July 20th, 2020

Supervisory personnel are to identify resources excess to the needs of the incident at the earliest opportunity. If possible, this should be done within 36 hours in advance of a proposed release by filling out a General Message Form (ICS 213) or Declaration of Excess Resource Sheet. Please include name, request number, date, ETD, ETA, and if available for reassignment. By definition, surplus personnel are available for release if they have met the 2:1 work rest requirements, have rested for a minimum of 8 hours.

Section Chiefs will approve all excess resource lists and the lists will be forwarded to the Resources Unit for processing. Operational resource excess lists shall be prepared by the Planning Section and approved by the Planning Section Chief.

The release priorities are:

- Local Government
- OES
- Out of state resources
- Cooperating Agencies
- Federal Resources
- Contract and private resources
- CAL FIRE Resources

The needs of the incident and off-incident issues may necessitate the modification of these priorities in certain cases.

Information concerning surplus resources will be forwarded to the Redding Expanded Dispatch by the Demobilization Unit (with ECC Support Team at incident). This information will include the resource name, request number, ETD, and ETA. Additionally, the availability of the resource for a new assignment will be provided.

All government equipment and rental vehicles must be safety inspected prior to release. Safety inspections shall be coordinated with the Ground Support Unit Leader. All deficiencies will be corrected prior to departure for home unless agency head signs a waiver of inspection.

Surplus resources lists will be posted within the ICP and at the Demobilization Unit with a schedule for resources to pick up the checkout form (ICS-221) at the Demobilization Unit and begin the checkout process. Finance will be the final stop prior to returning to the Demobilization Unit. All resources must complete the demobilization process. Once the ICS-221 has been completed and returned to the Demobilization Unit, the resource will be released from the incident to home, re-assigned to another incident, or held as directed by Northern Region Operations Center (North-Ops).

All Resources will meet any agency-specific and/or DMV rest requirements before demobilizing from the incident. The operator must be rested prior to driving. A resource encountering a delay enroute will contact the appropriate home unit or incident.

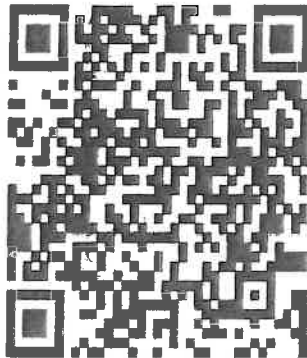


Local Government Resources on CFAA

If you are demobing from an incident and there is no OES AREP on site
F-42 thru the Incident Finance Section Chief or the Incident Commander
One of them must sign your 42's

The Incident keeps the Pink copy and you keep the Golden.
The Original and Green you mail to OES Headquarters as per the
instructions on the front of your F-42

OES JOB AIDS, FORMS, F-42 SAMPLES AND CFAA AGREEMENT



Questions?

**OES Assistant Chief Patrick Titus
916-634-9225**

CAL FIRE INCIDENT MANAGEMENT TEAM WATER USAGE PLAN

California Drought Emergency

The following shall be considered and implemented by all fire resources as a means to provide maximum efficiencies when utilizing water resources, while minimizing the impacts to private and public water supplies. Accountability shall be maintained for all water supplies that are utilized and care should be applied to ensure proper replacement and/or reimbursement to the supplier/ owner.

Fireline personnel- (During mop up operations)

- Use of Pencil Hose and Garden Nozzles with Shut-Offs.
- Use of Back pumps.
- Dry Mop-up and consolidation of heavy fuels to areas where they can burn out safely
- Locate/ Relocate Firelines to lighter fuels or natural barriers when safe.
- Set up and use portable tanks in anticipation of longer transport times for Water Tenders.
- Use of foams, gels and other water enhancers.
- Evaluate need to mop up in excess of 200 feet from fireline

Road Maintenance and Repair-

- Monitor and water roads only when and where needed.
- Water when most effective (evening and nights).
- Use chemical treatments when available (Magchloride, Omni bind ect).
- Consider use of tertiary or treated water (sp)

Aviation Operations-

- Use of Gels, Foams and Retardants. Set up portable plants.
- Consider Blivits and Pencil hose for interior mop up operations as opposed to numerous bucket drops.
- Establish and use pre-use agreements for existing and known water sources.
- Use large watershed dip sites when able. Minimize use of small, static ponds and lakes.
- Maintain accountability of water used and locations of dip sites.
- Evaluate need for interior bucket drops

Private Water Supplies-

- Notify property owner as early as possible.
- Minimize usage and develop alternative water supplies when and where appropriate.
- Track usage (meter, 214 form) and develop a plan to replace water.
- Make arrangements for reimbursement and damage claims if needed.

Public/ Municipal Water Supplies-

- Notify Agency as soon as possible and request a representative to the incident.
- Identify fill areas and request metering devices. Place on incident map.
- Use alternative or reclaimed water sources when available. Place on incident map.
- Make arrangements for reimbursement and damage claims if needed.

Management and Supervision-

- Use leaders intent and establish Water Conservation as an Management Objective.
- Consider complexity of water use on incidents. Establish a Water Supply Group Supervisor to coordinate additional resources to support the incident needs.
- Complete the Water Usage Report daily and turn in to Finance
- Review this check list and brief daily.

WATER USAGE REPORT

DATE: _____ **WORK LOCATION:** _____ **REQUEST #:** _____
 Example: 8/14/13 Example: DIV A Example: E-23

AGENCY or VENDOR NAME: _____ **RESOURCE ID:** _____
 Examples: CAL FIRE, AAA Water, etc. Examples: WT51, C309, etc.

DROP FORMS OFF IN FINANCE EVERY DAY

	✓ One			Open source i.e. pond, reservr		Gallons Used For Fire Fighting	Gallons Used For Incident Support	
		WATER SOURCE LOCATION <small>Address, DP #, Lat-Long, etc</small>	<small>Hydrant</small>	<small>Tank</small>	Check One	Gallons Used		Property Owner, Contact Info, Remarks, etc.

Additional Information:

The intent of this document is to track, record and validate the amount of water used on an incident.
 It is not intended to review the performance of equipment using the water on an incident.

TRAINING SPECIALIST MESSAGE

**A Training Specialist is available for trainees on
the incident.**

**All State, Federal and local government agency
Trainees working on Position Task Books will
need to register with the Incident Training
Specialist in order to receive proper credit for
your assignment.**

The TNSP is located in the building behind Safety.

Dennis Martin

Training Specialist

(707) 479-8421



Register using the QR Code



CAL-FIRE INCIDENT MANAGEMENT TEAM IV



24HR LINE RESOURCE - 2 OPERATOR

EMERGENCY SHIFT TICKET and EVALUATION FORM The responsible Government Officer will complete this form each shift.		Contractor Name THE BEST DOZERS LLC	
Incident or Project Name MISSION	Incident Number CA-MMU-018115	Request Number E-444	Operator #2 FIRST & LAST
Agreement Number	MMU-0000015953	Operator Furnished By: <input checked="" type="checkbox"/> Contractor <input type="checkbox"/> Government	
Equipment Make 1999 PETERBILT 379	Equipment Model / Type TRANSPORT 18 WHEEL	Operating Supplies Furnished By: <input checked="" type="checkbox"/> Contractor <input type="checkbox"/> Government	
Serial Number COMPLETE VIN#	License Number 12345A1	Equipment Status Inspected <input checked="" type="checkbox"/> Under Agreement Released by Government <input type="checkbox"/> Withdrawn by Contractor <input type="checkbox"/>	
Date Mo / Day	Work Start	Equipment Use (Circle) Hours	Days / Miles
9/5	0701	2400	17
9/6	0001	0700	7
			DIV X
			DIV X
Vendor Rating			
Poor* Avg. Good Exc. NO DAMAGE / NO CLAIM			
Govt. Rep. Name and Position - PRINT			
Print Your Name			
Govt. Rep. Signature			
Operator Skill Level <i>Yous Signature</i>			
Operator's Cooperation Level <i>Jake Smith</i>			
Overall Performance			
Date 9/6/17 Time 0700			
* NOTE: any rating of POOR requires an explanation in Comment Section. ** Final evaluation or for more documentation, use a CALFIRE Form 230 or equivalent.			

12HR LINE RESOURCE - 1 OPERATOR

EMERGENCY SHIFT TICKET and EVALUATION FORM The responsible Government Officer will complete this form each shift.		Contractor Name THE BEST DOZERS LLC	
Incident or Project Name MISSION	Incident Number CA-MMU-018115	Request Number E-555	Operator #2 FIRST & LAST
Agreement Number	MMU-0000015955	Operator Furnished By: <input checked="" type="checkbox"/> Contractor <input type="checkbox"/> Government	
Equipment Make 2004 CAT	Equipment Model / Type D6N / TYPE II E	Operating Supplies Furnished By: <input checked="" type="checkbox"/> Contractor <input type="checkbox"/> Government	
Serial Number COMPLETE VIN#	License Number	Equipment Status Inspected <input type="checkbox"/> Under Agreement Released by Government <input checked="" type="checkbox"/> Withdrawn by Contractor <input type="checkbox"/>	
Date Mo / Day	Work Start	Equipment Use (Circle) Hours	Days / Miles
9/7	0001	0700	7
9/7	0701	1900	12
9/7	1901	2400	5
			DIV X
			OFF SHIFT
Vendor Rating			
Poor* Avg. Good Exc. NO DAMAGE / NO CLAIM			
Govt. Rep. Name and Position - PRINT			
Print Your Name			
Govt. Rep. Signature			
Operator Skill Level <i>Yous Signature</i>			
Operator's Cooperation Level <i>Jake Smith</i>			
Overall Performance			
Date 9/5/17 Time 1900			
* NOTE: any rating of POOR requires an explanation in Comment Section. ** Final evaluation or for more documentation, use a CALFIRE Form 230 or equivalent.			

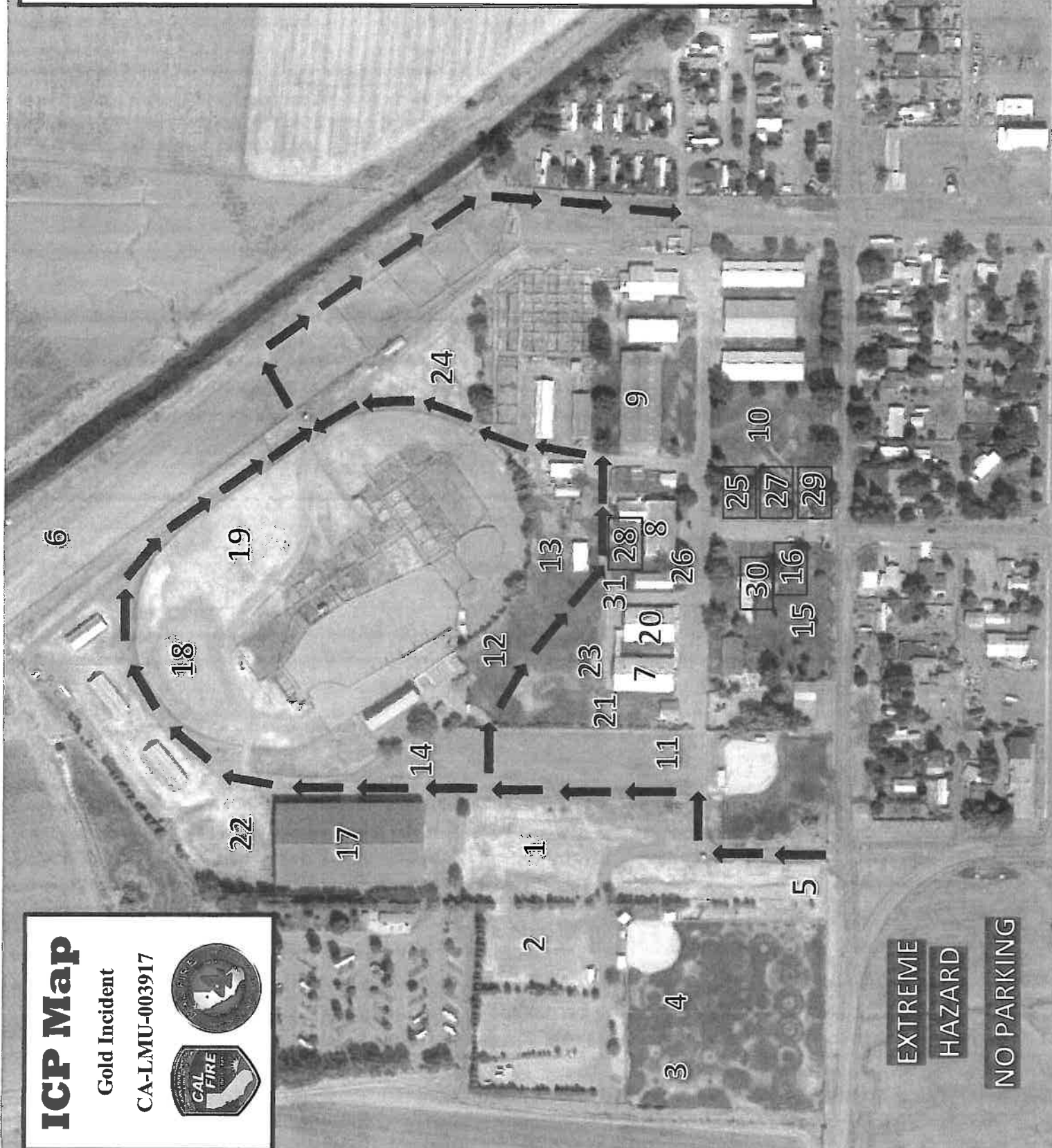
24HR / 12HR TRANSITION SHIFT TICKET

EMERGENCY SHIFT TICKET and EVALUATION FORM The responsible Government Officer will complete this form each shift.		Contractor Name THE BEST DOZERS LLC	
Incident or Project Name MISSION	Incident Number CA-MMU-018115	Request Number E-444	Operator #2 FIRST & LAST
Agreement Number	MMU-0000015953	Operator Furnished By: <input checked="" type="checkbox"/> Contractor <input type="checkbox"/> Government	
Equipment Make 1999 PETERBILT 379	Equipment Model / Type TRANSPORT 18 WHEEL	Operating Supplies Furnished By: <input checked="" type="checkbox"/> Contractor <input type="checkbox"/> Government	
Serial Number COMPLETE VIN#	License Number 12345A1	Equipment Status Inspected <input checked="" type="checkbox"/> Under Agreement Released by Government <input type="checkbox"/> Withdrawn by Contractor <input type="checkbox"/>	
Date Mo / Day	Work Start	Equipment Use (Circle) Hours	Days / Miles
9/6	0701	1900	12
9/6	1901	2400	5
			DIV X
			OFF SHIFT
Vendor Rating			
Poor* Avg. Good Exc. NO DAMAGE / NO CLAIM			
Govt. Rep. Name and Position - PRINT			
Print Your Name			
Govt. Rep. Signature			
Operator Skill Level <i>Yous Signature</i>			
Operator's Cooperation Level <i>Jake Smith</i>			
Overall Performance			
Date 9/5/17 Time 1900			
* NOTE: any rating of POOR requires an explanation in Comment Section. ** Final evaluation or for more documentation, use a CALFIRE Form 230 or equivalent.			

24HR IN CAMP RESOURCE

EMERGENCY SHIFT TICKET and EVALUATION FORM The responsible Government Officer will complete this form each shift.		Contractor Name THE BEST CAMP LLC	
Incident or Project Name MISSION	Incident Number CA-MMU-018115	Request Number E-333	Operator #2 FIRST & LAST
Agreement Number	MMU-0000015950	Operator Furnished By: <input checked="" type="checkbox"/> Contractor <input type="checkbox"/> Government	
Equipment Make TENT	Equipment Model / Type WESTERN SHELTER 19X35	Operating Supplies Furnished By: <input checked="" type="checkbox"/> Contractor <input type="checkbox"/> Government	
Serial Number	License Number	Equipment Status Inspected <input type="checkbox"/> Under Agreement Released by Government <input checked="" type="checkbox"/> Withdrawn by Contractor <input type="checkbox"/>	
Date Mo / Day	Work Start	Equipment Use (Circle) Hours	Days / Miles
9/2	0001	2400	24
			ICP
Vendor Rating			
Poor* Avg. Good Exc. VENDOR RATING MUST BE DONE			
Govt. Rep. Name and Position - PRINT			
Print Your Name			
Govt. Rep. Signature			
Operator Skill Level <i>Yous Signature</i>			
Operator's Cooperation Level <i>Jake Smith</i>			
Overall Performance			
Date 9/5/17 Time 1900			
* NOTE: any rating of POOR requires an explanation in Comment Section. ** Final evaluation or for more documentation, use a CALFIRE Form 230 or equivalent.			

1. Equipment Parking
2. Shower & Laundry
3. Sleepers
4. Tent Sleeping
5. PIO
6. Transport Parking
7. Supply
8. Check In, Time & Finance
9. Briefing
10. MKU Dining
11. Water & Lunch
12. Overhead Parking
13. CCC Sleeping
14. Transportation
15. Medical
16. Safety
17. CDCR Sleeping
18. CDCR Parking
19. Overflow Parking
20. Cooling Station
21. Logistics
22. CDCR Laundry/ Showers
23. Ordering
24. Overhead/ Overflow Parking
25. Radios
26. OES
27. Hotels
28. Fire Dawg Clerical
29. Liaison
30. Training Spec
31. Suppression Repair



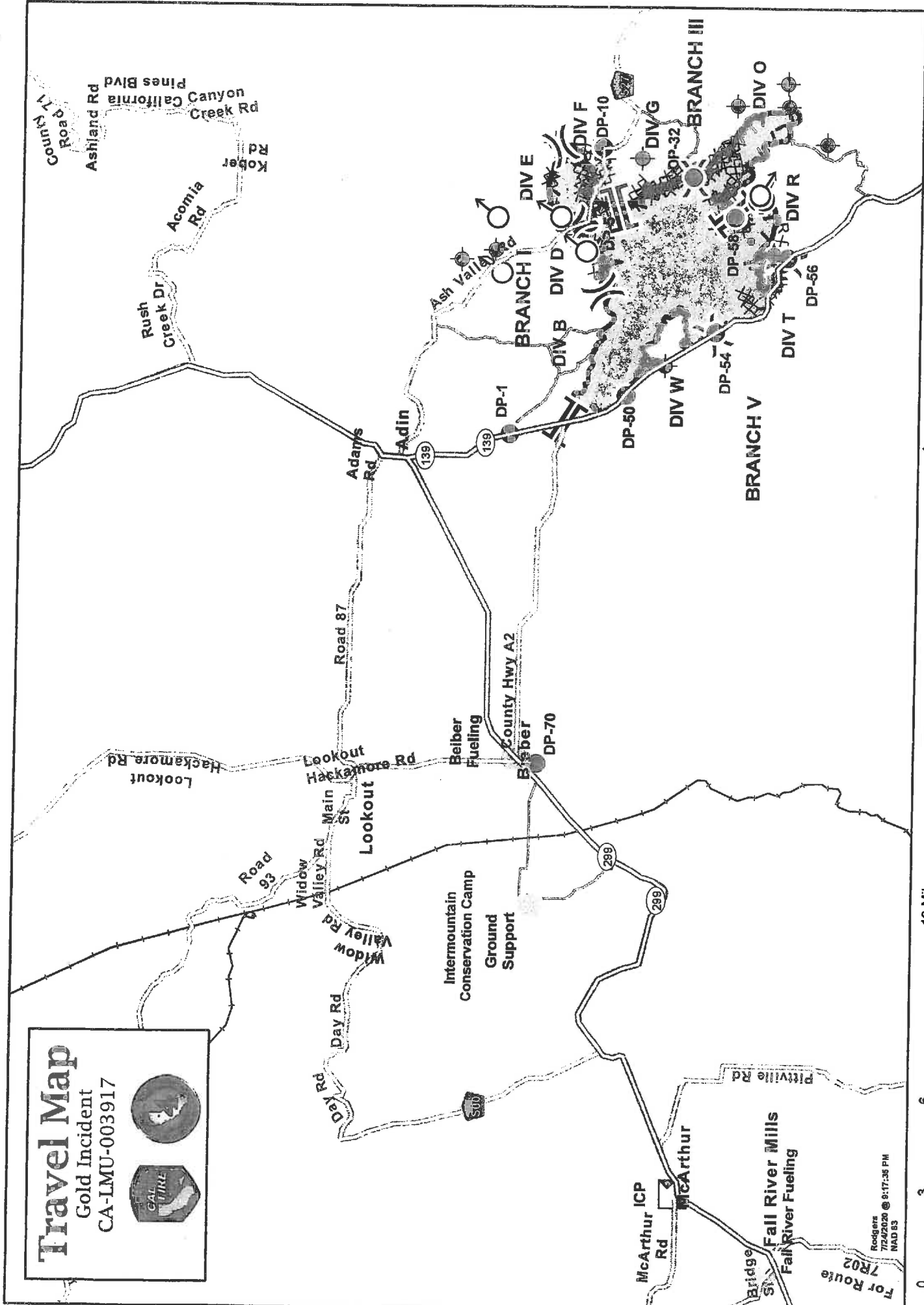
ICP Map
 Gold Incident
 CA-LMU-003917




**EXTREME
 HAZARD
 NO PARKING**

Travel Map
 Gold Incident
 CA-LMU-003917





12 Miles
 60,000 Feet

0 3 6 9 12 Miles
 0 10,000 20,000 30,000 60,000 Feet

For Route 7R02
 7/24/02 @ 9:17:38 PM
 MADS

Legend:

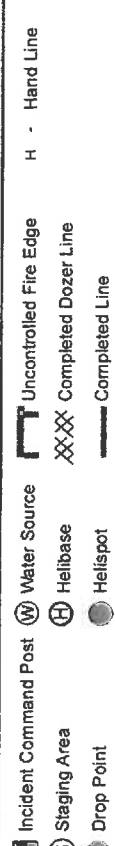
- Incident Command Post
- Staging Area
- Drop Point
- Water Source
- Helibase
- Helispot
- Spot Fire
- Other
- Dip Site
- Uncontrolled Fire Edge
- Completed Dozer Line
- Completed Line
- Proposed Dozer Line
- Hand Line

**Fuel Location Map
Fall River**



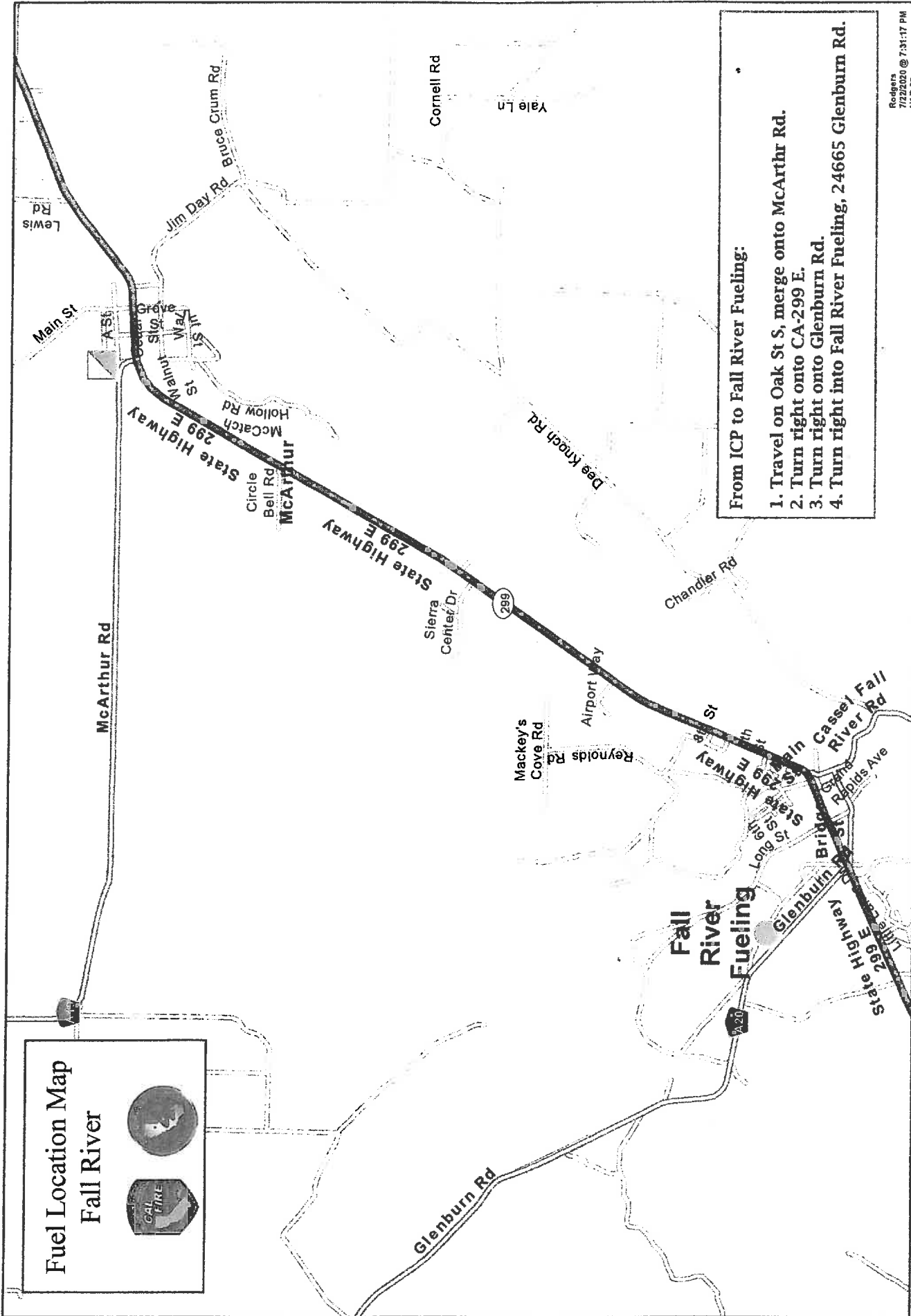
- From ICP to Fall River Fueling:**
1. Travel on Oak St S, merge onto McArthur Rd.
 2. Turn right onto CA-299 E.
 3. Turn right onto Glenburn Rd.
 4. Turn right into Fall River Fueling, 24665 Glenburn Rd.

Rodgers
7/22/2020 @ 7:31:17 PM
MAD.83



Incident Command Post Water Source Uncontrolled Fire Edge H - Hand Line
 Staging Area Helibase Completed Dozer Line
 Drop Point Helispot Completed Line

2 Miles
 0 0.5 1 10,000 Feet
 0 2,500 5,000

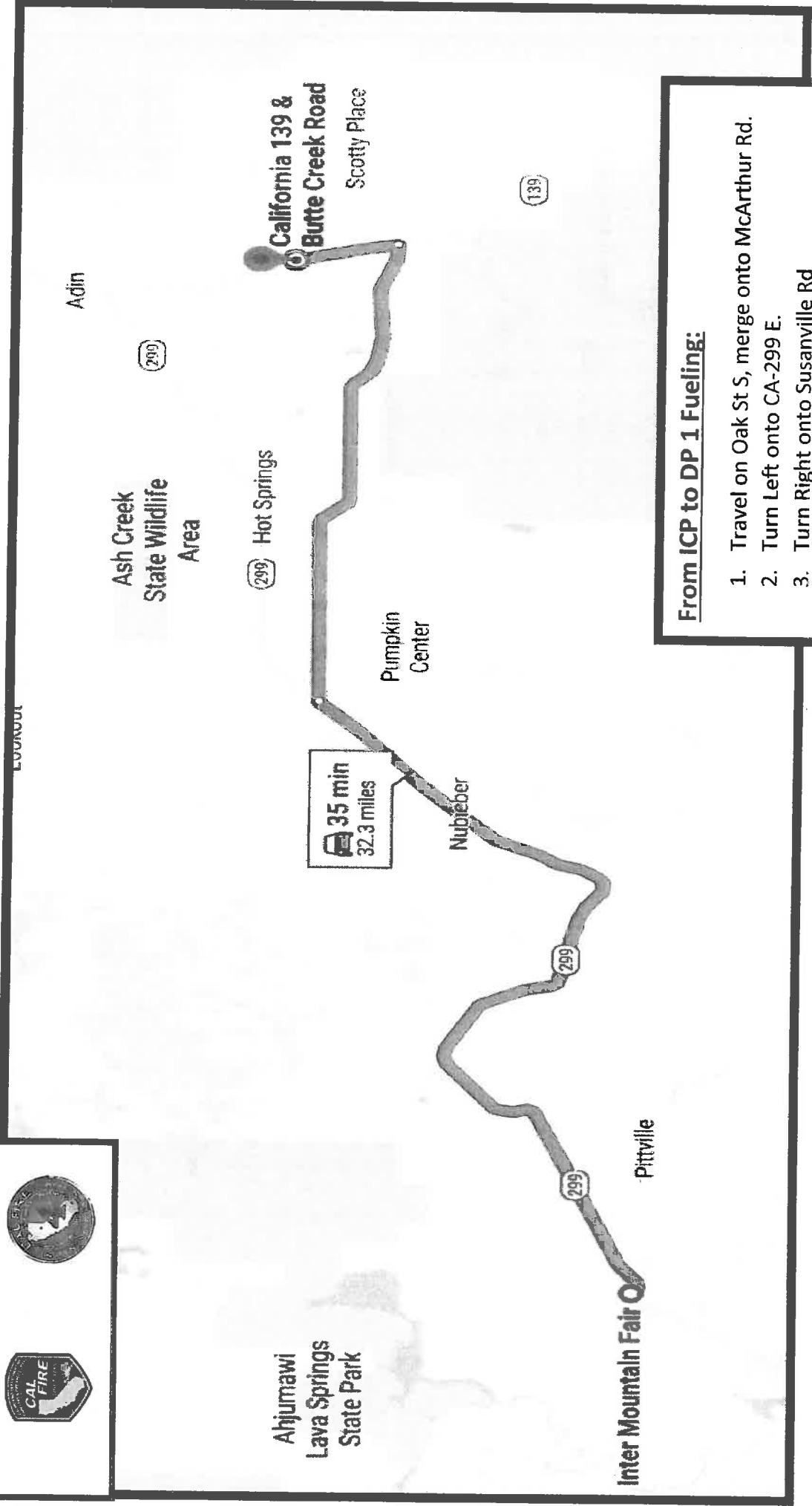


Fuel Location Map

DP 1



LOOKOUT



Abijumawi
Lava Springs
State Park

Adin

Ash Creek
State Wildlife
Area

Hot Springs

Pumpkin
Center

Nubieber

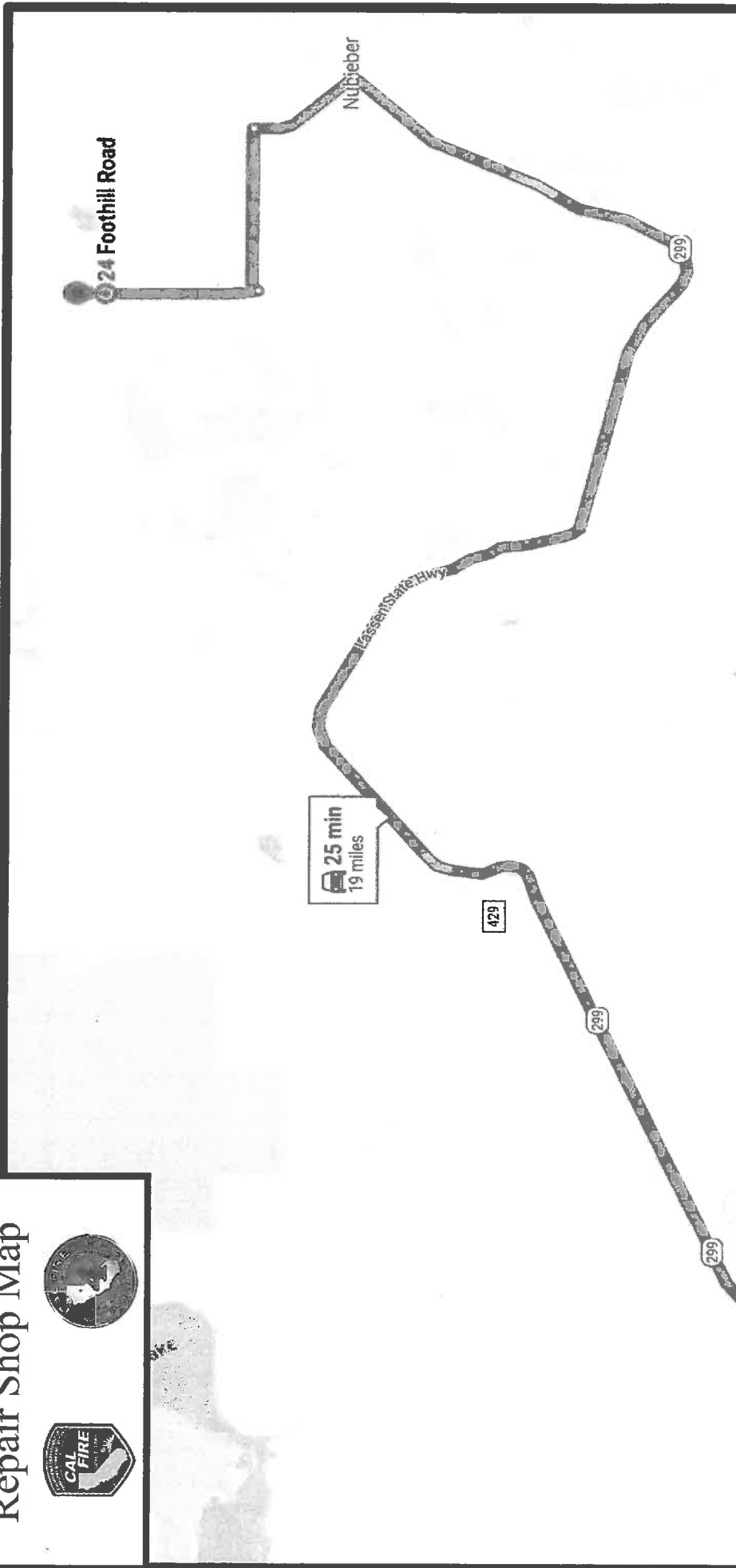
Inter Mountain Fair
Pittville

California 139 &
Butte Creek Road
Scotty Place

From ICP to DP 1 Fueling:

1. Travel on Oak St S, merge onto McArthur Rd.
2. Turn Left onto CA-299 E.
3. Turn Right onto Susanville Rd
4. Turn left onto CA-139 N
5. Turn Right onto Butte Creek Rd

Intermountain Ground Support Repair Shop Map



- From ICP to Ground Support:**
1. Travel on Oak St S, merge onto McArthur Rd.
 2. Turn Left onto CA-299 E.
 3. Turn left onto Kramer Rd
 4. 1 mile Turn Left
 5. 1 ½ miles turn left onto Foothill Rd

