

# INCIDENT ACTION PLAN

## GOLD INCIDENT

CA-LMU-003917

Friday



### OPERATIONAL PERIOD



7/24/2020 0700  
to  
7/25/2020 0700

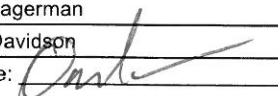


Briefing Frequency - VTAC 13





## ORGANIZATION ASSIGNMENT LIST (ICS 203)

<b>1. Incident Name:</b> GOLD		<b>2. Operational Period: Date From:</b> 7/24/2020 Time From: 0700		<b>Date To:</b> 7/25/2020 Time To: 0700	
<b>3. Incident Commander(s) and Command Staff:</b>			<b>7. Operation Section:</b>		
IC/UC's	Dave Russell, Mike Crites, Darryl Laws (T), George Huang (T)		Operations	Monty Smith, Jeremy Roesler (T)	
Deputy	Eddie Moore		Deputy Operations	Bill Weiser	
Safety Officer	Doug Ferro, Bill Murphy		Night Ops	Joshua Bischof	
Information Officer	Steve Kaufmann, Chris Harvey (T)		Staging Area		
Liaison Officer	Dave Pender, Ron Karlen (T)		<b>Branch</b>	<b>I</b>	<b>Spencer Andreis</b>
LELO	Josh Allen, LT. Anthony Bertain		Division/Group	B	Dennis Lang
<b>4. Agency/Organization Representatives:</b>			Division/Group	D	Cole Periera, Brian Martin (T)
Agency/Organization	Name		Division/Group	E	
LMU Line Officer	Jim Ferguson		Division/Group	F	
CAL OES	Pat Titus		<b>Branch</b>	<b>III</b>	
CCC	Alex Luquin		Division/Group	G	Christopher Markey
CDCR	Lt. Jeremy Micone		Division/Group	O	
Lassen Co. SO	Dean Growden		Division/Group		
Modoc Co. SO	Tex Doway		<b>Branch</b>	<b>V</b>	<b>Chris Martinelli</b>
CHP	Danny Kotsier		Division/Group	R	Rob Morales, Brian Riley (T)
Lassen Co. OES	Silas Rojas		Division/Group	T	Shane Galvez, Steve Cabrera (T)
Modoc Co. OES	Heather Hadwick		Division/Group	W	Todd Horton
CAL TRANS	Jordan Wymer		Division/Group		
BLM	Al Savage		<b>Branch</b>	<b>VII</b>	
			Division/Group	Bat 3 IA	
			Division/Group		
			Division/Group		
			<b>Branch</b>		
			Staging Area	Bieber	Chris Atkins
<b>5. Planning Section:</b>			Division/Group		
Chief	Chris Burch		Division/Group	Contingency	
Deputy	Jason Martin, David Shy		Division/Group	Cal Pines Cont.	
Resource Unit	Brian Torosian, Gwyndolyn Ozard, Coby Dyche, Jim Irving		Division/Group		
Situation Unit	Denny O'Neil, Damian Guillani		Division/Group		
Documentation Unit			Staging Area		
Demobilization Unit			Division/Group		
GISS	Daniel Dresselhaus		<b>Branch</b>	<b>Supp Repair</b>	<b>Don Schroeder</b>
FBAN	Tim Chavez		Division/Group		
IMET	Jeff Tonkin		Division/Group		
Training Tech Spec	Dennis Martin		<b>Air Operations Branch</b>		<b>Director:</b> <b>Greg Bradshaw</b>
			Air Support Group Supervisor		Tim Perkins
			Air Tactical Group Supervisor		
<b>6. Logistics Section</b>			Helibase Manager		Ray Gomez
Chief	Matt Reich				
Deputy	Mathew Brandt		<b>8. Finance/Administration Section:</b>		
Supply Unit	Shawn Burris		Chief	Mara Zaver	
Facilities Unit	Travis Heard, Matt Brown (T)		Deputy	Rob Jenkins	
Ground Support Unit	Conor Stapleton		Time Unit	Greg Tunzi	
Communications Unit	Mike Heyfron (T)		Procurement Unit	Courtney Arebalo	
Medical Unit	Darin Nelson		Comp/Claims Unit	Alyssa Hagerman	
			Cost Unit	Angela Davidson	
<b>Prepared By: Name:</b> David Shy		<b>Position/Title:</b> PSC		<b>Signature:</b> 	
<b>ICS 203</b>		<b>Date/Time:</b> 7/23/2020 2300 hours			



## Fire and COVID-19 Briefing Checklist

### Self-Awareness / Screening

- Immediately separate yourself from others.
- Notify supervisor if you or others experience:
  - Cough, more than expected
  - Shortness of breath or difficulty breathing
  - New loss of taste or smell
  - Fever
  - Chills
  - Sore throat
  - Muscle pain
- Review and follow crew and division plans to isolate, triage, and transport symptomatic personnel.

### Hygiene on the Fireline

- Properly wash or sanitize your hands often, especially before and after eating or entering a public place, and after coughing or sneezing.
- Avoid handshakes and communal use items.
- Maintain a supply of hand sanitizer and hand wipes. Inform supervisor of needed resupply.
- Disinfect high touch surfaces often:
  - Radios, phones, doors, pumps, fuel cans, etc.

### Social Distancing and Protective Equipment

- Initiate, practice, and remind others of social distancing.
- Conduct briefings and conversations outdoors and at least 6 feet apart.
- Utilize face coverings as a tool when practical.
- Clean or replace dirty face coverings, equipment, and PPE.

### Communications

- Face coverings and social distancing complicate communications. Ensure effective sender/receiver messaging.

### Protect yourself, your crew, and your camp!

Find more information: <https://www.nwccg.gov/coronavirus>.





# Gold Fire Incident Weather Forecast



FORECAST NO: 3 D/N  
PREDICTION FOR: Friday - 24 Hour Shift  
SHIFT DATE: July 24, 2020  
FORECAST ISSUED: 2000 PDT July 23, 2020

NAME OF FIRE: Gold Fire  
UNIT: Lassen Modoc  
Incident Meteorologist: Jeff Tonkin

Email **Observations** to: jeff.tonkin@noaa.gov or Text to cell: 707 672 3386 or Radio to Comms

---

## ....GUSTY WEST WINDS THIS AGAIN THIS AFTERNOON...AND LOWER RH VALUES...

WEATHER DISCUSSION: Drier westerly flow will set up over the region for the next few days. Gusty afternoon west winds again this afternoon...while strongest winds will occur along ridges and west to east aligned terrain. Lower RH values both during the day and at night can be expected. Other than some afternoon mountain cumulus and a few high clouds skies should generally remain clear.

### WEATHER FORECAST TODAY (FRIDAY DAYTIME):

WEATHER: Sunny with areas of smoke. A few high clouds and light afternoon cumulus.  
MAX TEMPERATURES: 84 - 88  
MIN HUMIDITY 4500 ft: 16 - 21 % ( 5% Lower than Thursday )

WIND: West 3 to 5 mph until 1200 PDT. Then increasing to 8 to 12 mph with Gusts 20 to 25 mph between 1300 and 1800 PDT. Winds diminishing thereafter.

LAL: 3 CWR: 0% HAINES: 3  
STABILITY / INVERSION: Moderately Unstable.  
SMOKE TRANSPORT WIND: South West 15 mph.

---

### WEATHER FORECAST TONIGHT:

WEATHER: Clear. Smoke laying in lower elevations.  
MIN TEMPERATURES: 50-55.  
MAX HUMIDITY: 65-70%.  
WINDS (EYE LEVEL): Downslope 3 to 5 mph with gusts up to 10 mph.

---

OUTLOOK FOR SATURDAY: Mostly Sunny...but smoky. Max Temps: 85 - 90. Min RH: 12-17%. Wind: West or Upslope or 4 to 8 mph...gusts to 15 mph after 1200 PDT. Then increasing after 1400 PDT to 10 to 15 mph with Gusts to 25 mph.

---

EXTENDED FORECAST FOR SUNDAY THROUGH TUESDAY: Possible Thunderstorms again Sunday and Monday...otherwise clear and sunny. Max Temps: 85-90. Min Temps: 45-50. Min RH: Max RH:  
Wind: West winds 10-15 mph each day...gusts to 20 to 25 mph between 1500-1900 PDT.

---

### OBSERVED WEATHER FROM THURSDAY:

Rush Ck RAWS 5500 FT: **Max T:** 81 **Min RH:** 19% **Ave. Wind Dir. W** **Ave. Wind Spd:** 6 G 18 mph

# FIRE BEHAVIOR FORECAST

FORECAST NUMBER: 3

TYPE OF FIRE: WILDLAND

FIRE NAME: GOLD

OPERATIONAL PERIOD: 7/24/2020

DATE ISSUED: 7/23/2020

TIME ISSUED: 2000

UNIT: LASSEN-MODOC UNIT, MODOC NF,  
AND BLM-NOD

SIGNED: \_\_\_\_\_

Typed/printed: TIM CHAVEZ FBAN

## INPUTS

WEATHER SUMMARY: SLIGHTLY DRIER AND WARMER TODAY. SEE IMET FORECAST

GENERAL: SUNRISE 0553, SUNSET 2029

### FUELS:

- SOME TIMBER WITH BRUSH AND GRASS UNDERSTORY AT HIGHER ELEVATIONS. FIRE ACTIVITY IS MOSTLY IN TIMBER WITH GRASS AND BITTERBRUSH UNDERSTORY. SOME CLEARCUT BLOCKS WITH SLASH FUELS SLOW HE FIRE.
- WINTER PRECIPITATION WAS 50% OF NORMAL. LATE RAINS DELAYED FIRE ACTIVITY
- ABUNDANT GRASS FUELS ARE AVAILABLE IN ALL AREAS AND ASPECTS. THESE FUELS ARE VERY SENSITIVE TO SMALL CHANGES IN WIND SPEED. RAPID RUNS POSSIBLE.
- ENERGY RELEASE COMPONENT OF THE NFDRS IS NEAR AVERAGE FOR THIS TIME OF YEAR. BUT THIS IS THE PEAK OF FIRE SEASON IN THIS AREA.
- 1000 HOUR FUELS ARE AT THE 10<sup>TH</sup> PERCENTILE AND APPROACHING HISTORIC MINIMUMS.
- ON 7/15 MANZANITA AND BITTERBRUSH LIVE FUEL MOISTURE WAS 120% NEARBY, WELL ABOVE CRITICAL OF 80%.
- THE FIRE AREA HAS NO SIGNIFICANT FIRE HISTORY

### TOPOGRAPHY:

- MOST OF THE FIRE IS BETWEEN 4000-6000' ELEVATION.
- MOSTLY PLATEAUS WITH DEEP DRAINAGES. THE MAIN DRAINAGES ARE THE BUTTE CREEK/FOSTER DRAW, ASH CREEK AND WILLOW CREEK.

## OUTPUTS

### SPECIFIC: BRANCH I

THE FIRE WAS MOST ACTIVE IN THIS AREA. FREQUENT MEDIUM DISTANCE SPOTTING AND SINGLE AND SMALL GROUP TORCHING WILL OCCUR. FIRE MOVES INTO ASH CREEK/ASH VALLEY. AS THE FIRE MOVES TO LOWER ELEVATIONS IN DIV G THE FUELS DECREASE IN LOADING AND BECOME MORE GRASSY.

### BRANCH V

FIRE IS MOSTLY BACKING/SMOLDERING ALONG HWY 139. ROLLOUT HAZARD NEAR HAYDEN HILL RD. AT THE DIV W/T BREAK. MEADOWS ALONG HWY 139 ARE RECEPTIVE FUELS. DIV R CONTINUES TO THREATEN TO MOVE WITH THE WIND THROUGH COYOTE FLAT INTO DIAZ FLAT. MEDIUM DISTANCE SPOTTING CAN BE EXPECTED IN THE AFTERNOON.

### AIR OPERATIONS:

VISIBILITY DECREASES IN AFTERNOON UNTIL MID MORNING.

## SAFETY

- "**TAKE 5 @ 2**" THIS FIRE HAS COME BACK TO LIFE SEVERAL DAYS IN A ROW AT 1400. TAKE TIME TO REASSESS YOUR OBJECTIVES AND SUCCESS, AND REEVALUATE YOUR ESCAPE ROUTE AND SAFE ZONES.
- FREQUENT MEDIUM RANGE SPOTTING IS A HAZARD.
- SAFETY ZONES WILL NEED TO BE BIGGER THAN USUAL IN GRASS FUELS DUE TO HIGH LOADINGS



# ASSIGNMENT LIST (ICS 204 WF)

CONTROLLED UNCLASSIFIED  
INFORMATION/BASIC

<b>1. Incident Name:</b> <p style="text-align: center; font-weight: bold;">GOLD</p>	<b>2. Operational Period:</b> Date From: 07/24/20    Date To: 07/25/20 Time From: 0700    Time To: 0700	<b>3. Branch</b> <b>Division</b> <p style="text-align: center; font-size: 2em; font-weight: bold;">I                      D</p>
--	---	--

<b>4. Operations Personnel:</b>		Page 1 of 2	Delta
Operations Section Chief: <b>Monty Smith, Jeremy Roesler (T)</b>		Night Ops: <b>Joshua Bischof</b>	
Branch Director: <b>Spencer Andreis</b>		Branch Safety: <b>Matt Newberry</b>	
Division/Group Supervisor: <b>Cole Periera, Brian Martin (T)</b>		Air Attack:	

5. Resources Assigned:	** Resources Below in Bold are 12 Hour **							
Resource Identifier	ALS	LWD	Leader	Personnel	Request #	Hours	Reporting Location	
STC LNU 9147C		8/2	ROHRS, SCOTT	21	E-118	0700-0700	DP 1	
STC BTU 9210C			BROWNELL, TONY	21	E-152	0700-0700	DP 1	
STC NEU 9232C		8/4	HALE, NOLAN R	7	E-153	0700-0700	DP 1	
STC TCU 9442C		8/2	HUTCHINSON, THOMAS	7	E-133	0700-0700	DP 1	
STC XAL 2003C		8/3	CARLIN, KENT	17	E-40	0700-0700	DP 1	
STC XSJ 4177C		7/28	MADSON, JOHN	16	E-85	0700-0700	DP 1	
ENG3 LMU 2274		8/2	BILLINGS, ROY	4	E-79	0700-0700	DP 1	
ENG3 LMU 2293					E-32	0700-0700	DP 1	
<b>ENG3 MDF 44</b>		<b>8/3</b>	<b>ELEWELL, KURT</b>	5	<b>E-2</b>	<b>0700-1900</b>	<b>DP 1</b>	
<b>ENG3 STF 322</b>		<b>8/2</b>	<b>MCCREA, DAVID D</b>	5	<b>E-1</b>	<b>0700-1900</b>	<b>DP 1</b>	
<b>ENG6 FELIX FIRE 6</b>		<b>8/3</b>	<b>FLEWELL, KURT</b>	3	<b>E-6</b>	<b>0700-1900</b>	<b>DP 1</b>	
STG 9126G			ALTAMIRANO, JOHN	33 +/-	C-25	0700-0700	DP 1	
STG 9273G			CHOLICO, ALEJANDRO	33 +/-	C-22	0700-0700	DP 1	
STL SBC 9322L		8/4	MCCARTY, JASON A	7 +/-	E-204	0700-0700	DP 1	
STL MMU 9428L		7/29	WOLFORD, KEITH	7	E-140	0700-0700	DP 1	
DOZ LNU 1443					E-8	0700-0700	DP 1	
DOZ LNU 1445		8/2	BOSCHI, CLAY A	3	E-10	0700-0700	DP 1	
<b>DOZ TGU 2546</b>		<b>7/29</b>	<b>SCOTT THOMAS</b>	3	<b>E-16</b>	<b>0700-1900</b>	<b>DP 1</b>	

**6. Work Assignments:**  
Construct direct line.  
Mop-up 100'-300' in.

**7. Special Instructions:**

8. Communications							
Name	Ch	Function	Rx Freq	Rx Tone	Tx Freq	Tx Tone	Notes
NIFC C2	1	COMMAND	170.4500	123.0 (T2)	168.1000	123.0 (T2)	HAYDEN HILL
CDF T27	6	TACTICAL	159.3075	192.8 (T16)	159.3075	192.8 (T16)	BRANCH I
A/G CDF T24	14	TACTICAL	151.3325	192.8 (T16)	151.3325	192.8 (T16)	*** AIR TO GROUND ***
CALCORD	15	MEDICAL	156.0750	156.7 (T6)	156.0750	156.7 (T6)	
GUARD 24	16	EMERGENCY	168.6250		168.6250	110.9 (T1)	EMERGENCY USE ONLY

**9. Prepared by: Name:** Gwyndolyn Ozard                      RESL  
Signature:

**ICS 204**                      Date/Time: 7/23/2020    2200                      Personnel Count: 192



# ASSIGNMENT LIST (ICS 204 WF)

CONTROLLED UNCLASSIFIED  
INFORMATION//BASIC

<b>1. Incident Name:</b> <p style="text-align: center; font-weight: bold;">GOLD</p>	<b>2. Operational Period:</b> Date From: 07/24/20    Date To: 07/25/20 Time From: 0700    Time To: 0700	<b>3. Branch</b> <b>Division</b> <p style="text-align: center; font-size: 2em; font-weight: bold;">I                      D</p>
--	---	--

<b>4. Operations Personnel:</b>		Page 2 of 2	Delta
Operations Section Chief: <b>Monty Smith, Jeremy Roesler (T)</b>		Night Ops: <b>Joshua Bischof</b>	
Branch Director: <b>Spencer Andreis</b>		Branch Safety: <b>Matt Newberry</b>	
Division/Group Supervisor: <b>Cole Periera, Brian Martin (T)</b>		Air Attack:	

5. Resources Assigned:	** Resources Below in Bold are 12 Hour **							
Resource Identifier	ALS	LWD	Leader	Personnel	Request #	Hours	Reporting Location	
W/T PVT E-26 - LUNTEY'S				2	E-26	0700-0700	DP 1	
W/T PVT E-56 - HARRIS				2	E-56	0700-0700	DP 1	
W/T PVT E-142 - TRAFFIC		8/5	FORDE, BOB	2	E-142	0700-0700	DP 1	
W/T PVT E-144 - GOLDEN STATE			BALES, CODY	2	E-144	0700-0700	DP 1	
W/T PVT E-147 - AMERICAN			REALI, VINCENT	2	E-147	0700-0700	DP 1	
W/T PVT E-149 - OILAR			OILER, DANNY	2	E-149	0700-0700	DP 1	
W/T PVT E-151 - DARRAH			KAUNDART, DAVE	2	E-151	0700-0700	DP 1	
<b>FALM O-265 - LONE PINE</b>			<b>RANDY</b>	2	<b>O-265</b>	<b>0700-1900</b>	<b>DP 1</b>	
SOFR HILL JR			HILL JR, ROBERT	1	O-213	0700-0700	DP 1	
FEMT CHAMBERLAIN			CHAMBERLAIN, WES	1	O-226	0700-0700	DP 1	
FEMP PETERS	ALS		PETERS, MATT	1	O-132	0700-0700	DP 1	

**6. Work Assignments:**  
Construct direct line.  
Mop-up 100'-300' in.

**7. Special Instructions:**

8. Communications							
Name	Ch	Function	Rx Freq	Rx Tone	Tx Freq	Tx Tone	Notes
NIFC C2	1	COMMAND	170.4500	123.0 (T2)	168.1000	123.0 (T2)	HAYDEN HILL
CDF T27	6	TACTICAL	159.3075	192.8 (T16)	159.3075	192.8 (T16)	BRANCH I
A/G CDF T24	14	TACTICAL	151.3325	192.8 (T16)	151.3325	192.8 (T16)	*** AIR TO GROUND ***
CALCORD	15	MEDICAL	156.0750	156.7 (T6)	156.0750	156.7 (T6)	
GUARD 24	16	EMERGENCY	168.6250		168.6250	110.9 (T1)	EMERGENCY USE ONLY

**9. Prepared by: Name:**                      Gwyndolyn Ozard                      RESL

Signature:

<b>ICS 204</b>	Date/Time: 7/23/2020 2200	Personnel Count: 19
----------------	---------------------------	---------------------

# ASSIGNMENT LIST (ICS 204 WF)

CONTROLLED UNCLASSIFIED  
INFORMATION//BASIC

<b>1. Incident Name:</b> <p style="text-align: center; font-weight: bold;">GOLD</p>	<b>2. Operational Period:</b> Date From: 07/24/20    Date To: 07/25/20 Time From: 0700    Time To: 0700	<b>3. Branch</b> <b>Division</b> <p style="text-align: center; font-size: 2em; font-weight: bold;">I                      E</p>
--	---	--

<b>4. Operations Personnel:</b>		Page 1 of 1                      Echo
Operations Section Chief: <b>Monty Smith, Jeremy Roesler (T)</b>	Night Ops: <b>Joshua Bischof</b>	
Branch Director: <b>Spencer Andreis</b>	Branch Safety: <b>Matt Newberry</b>	
Division/Group Supervisor:	Air Attack:	

5. Resources Assigned:		** Resources Below in Bold are 12 Hour **						
Resource Identifier	ALS	LWD	Leader	Personnel	Request #	Hours	Reporting Location	
STC+						0700-0700	DP 10	
STC+						0700-0700	DP 10	
STC+						0700-0700	DP 10	
STC+						0700-0700	DP 10	
STC+						0700-0700	DP 10	
STG+						0700-0700	DP 10	
STG+						0700-0700	DP 10	
STG+						0700-0700	DP 10	
STG+						0700-0700	DP 10	
STG+						0700-0700	DP 10	
DOZ+						0700-0700	DP 10	
DOZ+						0700-0700	DP 10	
DOZ+						0700-0700	DP 10	
DOZ+						0700-0700	DP 10	
W/T+						0700-0700	DP 10	
W/T+						0700-0700	DP 10	
W/T+						0700-0700	DP 10	

**6. Work Assignments:**  
 Construct hand and dozer line.  
 Mop-up 100'.  
 Plumb with hose as necessary.

**7. Special Instructions:**

8. Communications							
Name	Ch	Function	Rx Freq	Rx Tone	Tx Freq	Tx Tone	Notes
NIFC C2	1	COMMAND	170.4500	123.0 (T2)	168.1000	123.0 (T2)	HAYDEN HILL
CDF T28	7	TACTICAL	151.1825	192.8 (T16)	151.1825	192.8 (T16)	BRANCH I
A/G CDF T24	14	TACTICAL	151.3325	192.8 (T16)	151.3325	192.8 (T16)	*** AIR TO GROUND ***
CALCORD	15	MEDICAL	156.0750	156.7 (T6)	156.0750	156.7 (T6)	
GUARD 24	16	EMERGENCY	168.6250		168.6250	110.9 (T1)	EMERGENCY USE ONLY

**9. Prepared by: Name:**                      Gwyndolyn Ozard                      RESL                      Signature:

**ICS 204**                      Date/Time: 7/23/2020    2200                      Personnel Count: 0



# ASSIGNMENT LIST (ICS 204 WF)

CONTROLLED UNCLASSIFIED  
INFORMATION/BASIC

<b>1. Incident Name:</b> <p style="text-align: center; font-weight: bold;">GOLD</p>	<b>2. Operational Period:</b> Date From: 07/24/20    Date To: 07/25/20 Time From: 0700    Time To: 0700	<b>3. Branch</b> <b>Division</b> <p style="text-align: center; font-size: 2em; font-weight: bold;">I                      F</p> <p style="text-align: center;">Page 1 of 1              Foxtrot</p>
--	---	--

<b>4. Operations Personnel:</b>	
Operations Section Chief: <b>Monty Smith, Jeremy Roesler (T)</b>	Night Ops: <b>Joshua Bischof</b>
Branch Director: <b>Spencer Andreis</b>	Branch Safety: <b>Matt Newberry</b>
Division/Group Supervisor:	Air Attack:

<b>5. Resources Assigned:</b>		<b>** Resources Below in Bold are 12 Hour **</b>						
Resource Identifier	ALS	LWD	Leader	Personnel	Request #	Hours	Reporting Location	
STC+						0700-0700	DP 10	
STC+						0700-0700	DP 10	
STC+						0700-0700	DP 10	
STC+						0700-0700	DP 10	
STC+						0700-0700	DP 10	
STG+						0700-0700	DP 10	
STG+						0700-0700	DP 10	
STG+						0700-0700	DP 10	
STG+						0700-0700	DP 10	
STG+						0700-0700	DP 10	
STG+						0700-0700	DP 10	
DOZ+						0700-0700	DP 10	
DOZ+						0700-0700	DP 10	
DOZ+						0700-0700	DP 10	
DOZ+						0700-0700	DP 10	
W/T+						0700-0700	DP 10	
W/T+						0700-0700	DP 10	
W/T+						0700-0700	DP 10	

**6. Work Assignments:**  
 Construct hand and dozer line.  
 Mop-up 100'.  
 Plumb with hose as necessary.

**7. Special Instructions:**

<b>8. Communications</b>							
Name	Ch	Function	Rx Freq	Rx Tone	Tx Freq	Tx Tone	Notes
NIFC C2	1	COMMAND	170.4500	123.0 (T2)	168.1000	123.0 (T2)	HAYDEN HILL
VTAC12	8	TACTICAL	154.4525	156.7 (T6)	154.4525	156.7 (T6)	BRANCH I
A/G CDF T24	14	TACTICAL	151.3325	192.8 (T16)	151.3325	192.8 (T16)	*** AIR TO GROUND ***
CALCORD	15	MEDICAL	156.0750	156.7 (T6)	156.0750	156.7 (T6)	
GUARD 24	16	EMERGENCY	168.6250		168.6250	110.9 (T1)	EMERGENCY USE ONLY

<b>9. Prepared by: Name:</b>	Gwyndolyn Ozard	RESL	<b>Signature:</b>
<b>ICS 204</b>	Date/Time: 7/23/2020	2200	Personnel Count: 0

# ASSIGNMENT LIST (ICS 204 WF)

CONTROLLED UNCLASSIFIED  
INFORMATION//BASIC

<b>1. Incident Name:</b> <p style="text-align: center; font-weight: bold;">GOLD</p>	<b>2. Operational Period:</b> Date From: 07/24/20    Date To: 07/25/20 Time From: 0700    Time To: 0700	<b>3. Branch</b> <b>Division</b> <p style="text-align: center; font-size: 2em; font-weight: bold;">III                      G</p> <p style="text-align: center;">Page 1 of 2                      Golf</p>
--	---	---

<b>4. Operations Personnel:</b> Operations Section Chief: <b>Monty Smith, Jeremy Roesler (T)</b> Branch Director: Division/Group Supervisor: <b>Christopher Markey</b>	Night Ops: <b>Joshua Bischof</b> Branch Safety: Air Attack:
---	---

5. Resources Assigned:		** Resources Below in Bold are 12 Hour **					
Resource Identifier	ALS	LWD	Leader	Personnel	Request #	Hours	Reporting Location
STC OES 1880C			KELLY, TIM	20	E-15	0700-0700	DP 5
STC XSO 2350C			PRESCOTT, JASON	20	E-134	0700-0700	DP 5
STC XCA 4050C		7/30	DOWNES, MIKE	16	E-84	0700-0700	DP 5
STC XYO 4277C		7/30	STILES, DAVID	20	E-83	0700-0700	DP 5
ENG3 LMU 2264		8/4	BEACHAM, NICKOLAS	3	E-31	0700-0700	DP 5
ENG3 LMU 2294		7/30	HUGHES, JACOB	4	E-34	0700-0700	DP 5
<b>ENG3 PNF 324</b>		<b>8/2</b>	<b>LAVELY, CODY</b>	3	<b>E-3</b>	<b>0700-1900</b>	<b>DP 5</b>
ENG2 ADI 4722					E-39	0700-0700	DP 5
STG BDU 9357G		8/4	SABINO, ARNOLD	28	C-11	0700-0700	DP 5
STG+						0700-0700	DP 5
<b>CRW1 GOLDEN EMPIRE</b>		<b>7/30</b>	<b>YOUNG, PADDY</b>	21	<b>C-10</b>	<b>0700-1900</b>	<b>DP 5</b>
<b>CRW2IA FIRESTORM 5</b>		<b>8/3</b>	<b>NORLIE, MAC</b>	20	<b>C-4</b>	<b>0700-1900</b>	<b>DP 5</b>
STL SCU 9161L		8/1	QUESTO, KALEN	7 +/-	E-154	0700-0700	DP 5
STL SHU 9242L				7	E-80	0700-0700	DP 5
DOZ PVT E-20 - SHERER			SHERER, JIM	2	E-20	0700-0700	DP 5
DOZ PVT E-165 - ALGERINE			TIM BURNS	2	E-165	0700-0700	DP 5
DOZ PVT E-166 - NORTHSTATE			NICKELL, CORY	2	E-166	0700-0700	DP 5
DOZ PVT E-176 - WYLIE						0700-0700	DP 5

**6. Work Assignments:**  
 Construct direct line.  
 Mop-up and patrol.

**7. Special Instructions:**

8. Communications							
Name	Ch	Function	Rx Freq	Rx Tone	Tx Freq	Tx Tone	Notes
NIFC C2	1	COMMAND	170.4500	123.0 (T2)	168.1000	123.0 (T2)	HAYDEN HILL
VTAC12	5	TACTICAL	154.4525	156.7 (T6)	154.4525	156.7 (T6)	BRANCH III
A/G CDF T24	14	TACTICAL	151.3325	192.8 (T16)	151.3325	192.8 (T16)	*** AIR TO GROUND ***
CALCORD	15	MEDICAL	156.0750	156.7 (T6)	156.0750	156.7 (T6)	
GUARD 24	16	EMERGENCY	168.6250		168.6250	110.9 (T1)	EMERGENCY USE ONLY

<b>9. Prepared by: Name:</b>	Gwyndolyn Ozard	RESL	Signature:
<b>ICS 204</b>	Date/Time: 7/23/2020 2200		Personnel Count: 175

# ASSIGNMENT LIST (ICS 204 WF)

CONTROLLED UNCLASSIFIED  
INFORMATION/BASIC

<b>1. Incident Name:</b> <p style="text-align: center; font-weight: bold;">GOLD</p>	<b>2. Operational Period:</b> Date From: 07/24/20    Date To: 07/25/20 Time From: 0700    Time To: 0700	<b>3. Branch</b> <b>Division</b> <p style="text-align: center; font-size: 2em; font-weight: bold;">III                      G</p>
--	---	--

<b>4. Operations Personnel:</b>		<b>Page 2 of 2</b>	<b>Golf</b>
Operations Section Chief: <b>Monty Smith, Jeremy Roesler (T)</b>		Night Ops: <b>Joshua Bischof</b>	
Branch Director:		Branch Safety:	
Division/Group Supervisor: <b>Christopher Markey</b>		Air Attack:	

5. Resources Assigned:	** Resources Below in Bold are 12 Hour **							
Resource Identifier	ALS	LWD	Leader	Personnel	Request #	Hours	Reporting Location	
W/T OES 31					E-87	0700-0700	DP 5	
W/T 4830						0700-0700	DP 5	
W/T PVT E-143 - FORD		8/3	FORD, GARY	2	E-143	0700-0700	DP 5	
<b>W/T PVT E-145 - HILLTOP</b>			<b>HILLTOP, JUSTIN</b>	1	<b>E-145</b>	<b>0700-1900</b>	<b>DP 5</b>	
W/T PVT E-148 - 49ER		8/4	SASSER, SMITH	2	E-148	0700-0700	DP 5	
W/T PVT E-150 - WATERBOYS			KEENE, ROBERT	2	E-150	0700-0700	DP 5	
HEQB SKROBECKY			SKROBECKY, JED	1	O-194	0700-0700	DP 5	
HEQB WILL			WILL, GARY C	1	O-145	0700-0700	DP 5	
HEQB (T) TUCKER				1	O-258	0700-0700	DP 5	
HEQB (T) GIBSON			GIBSON, CODY	1	O-198	0700-0700	DP 5	
<b>FALM+</b>						<b>0700-1900</b>	<b>DP 5</b>	
FEMP POTTS	ALS	8/5	POTTS, ROD	1	O-214	0700-0700	DP 5	
FEMT PITTS			PITTS, JONATHAN	1	O-225	0700-0700	DP 5	

**6. Work Assignments:**  
Construct direct line.  
Mop-up and patrol.

**7. Special Instructions:**

8. Communications							
Name	Ch	Function	Rx Freq	Rx Tone	Tx Freq	Tx Tone	Notes
NIFC C2	1	COMMAND	170.4500	123.0 (T2)	168.1000	123.0 (T2)	HAYDEN HILL
VTAC12	5	TACTICAL	154.4525	156.7 (T6)	154.4525	156.7 (T6)	BRANCH III
A/G CDF T24	14	TACTICAL	151.3325	192.8 (T16)	151.3325	192.8 (T16)	*** AIR TO GROUND ***
CALCORD	15	MEDICAL	156.0750	156.7 (T6)	156.0750	156.7 (T6)	
GUARD 24	16	EMERGENCY	168.6250		168.6250	110.9 (T1)	EMERGENCY USE ONLY

<b>9. Prepared by: Name:</b>	Gwyndolyn Ozard	RESL	Signature:
<b>ICS 204</b>	Date/Time: 7/23/2020 2200		Personnel Count: 13

# ASSIGNMENT LIST (ICS 204 WF)

CONTROLLED UNCLASSIFIED  
INFORMATION//BASIC

<b>1. Incident Name:</b> <p style="text-align: center; font-weight: bold;">GOLD</p>	<b>2. Operational Period:</b> Date From: 07/24/20    Date To: 07/25/20 Time From: 0700    Time To: 0700	<b>3. Branch</b> <b>Division</b> <p style="text-align: center; font-size: 2em; font-weight: bold;">III                      O</p>
--	---	--

<b>4. Operations Personnel:</b>		Page 1 of 1 <b>Oscar</b>
Operations Section Chief: <b>Monty Smith, Jeremy Roesler (T)</b>	Night Ops: <b>Joshua Bischof</b>	
Branch Director:	Branch Safety:	
Division/Group Supervisor:	Air Attack:	

<b>5. Resources Assigned:</b>		<b>** Resources Below in Bold are 12 Hour **</b>						
Resource Identifier	ALS	LWD	Leader	Personnel	Request #	Hours	Reporting Location	
STC+						0700-0700	DP 32	
STC+						0700-0700	DP 32	
STC+						0700-0700	DP 32	
STC+						0700-0700	DP 32	
STC+						0700-0700	DP 32	
STG+						0700-0700	DP 32	
STG+						0700-0700	DP 32	
STG+						0700-0700	DP 32	
STG+						0700-0700	DP 32	
STG+						0700-0700	DP 32	
STG+						0700-0700	DP 32	
DOZ+						0700-0700	DP 32	
DOZ+						0700-0700	DP 32	
DOZ+						0700-0700	DP 32	
DOZ+						0700-0700	DP 32	
W/T+						0700-0700	DP 32	
W/T+						0700-0700	DP 32	
W/T+						0700-0700	DP 32	

**6. Work Assignments:**  
 Construct hand and dozer line.  
 Mop-up 100'.  
 Plumb with hose as necessary.

**7. Special Instructions:**

<b>8. Communications</b>							
Name	Ch	Function	Rx Freq	Rx Tone	Tx Freq	Tx Tone	Notes
NIFC C2	1	COMMAND	170.4500	123.0 (T2)	168.1000	123.0 (T2)	HAYDEN HILL
NIFC T1	6	TACTICAL	168.0500	123.0 (T2)	168.0500	123.0 (T2)	BRANCH III
A/G CDF T24	14	TACTICAL	151.3325	192.8 (T16)	151.3325	192.8 (T16)	*** AIR TO GROUND ***
CALCORD	15	MEDICAL	156.0750	156.7 (T6)	156.0750	156.7 (T6)	
GUARD 24	16	EMERGENCY	168.6250		168.6250	110.9 (T1)	EMERGENCY USE ONLY

<b>9. Prepared by: Name:</b>	Gwyndolyn Ozard	RESL	Signature:
<b>ICS 204</b>	Date/Time: 7/23/2020 2200	Personnel Count: 0	

# ASSIGNMENT LIST (ICS 204 WF)

CONTROLLED UNCLASSIFIED  
INFORMATION//BASIC

<b>1. Incident Name:</b> <p style="text-align: center; font-size: 1.2em;"><b>GOLD</b></p>	<b>2. Operational Period:</b> Date From: 07/24/20    Date To: 07/25/20 Time From: 0700    Time To: 0700	<b>3. Branch</b> <b>Division</b> <p style="text-align: center; font-size: 1.5em;"><b>V</b>                      <b>R</b></p>
--	---	---

<b>4. Operations Personnel:</b>		<b>Page 1 of 1</b> <b>Romeo</b>
Operations Section Chief: <b>Monty Smith, Jeremy Roesler (T)</b>	Night Ops: <b>Joshua Bischof</b>	
Branch Director: <b>Chris Martinelli</b>	Branch Safety: <b>Tim Irwin</b>	
Division/Group Supervisor: <b>Rob Morales, Brian Riley (T)</b>	Air Attack:	

5. Resources Assigned:	** Resources Below in Bold are 12 Hour **						
Resource Identifier	ALS	LWD	Leader	Personnel	Request #	Hours	Reporting Location
STC XSC 2310C		8/2	<b>KRISMAN, MIKE</b>	16	E-14	0700-0700	DP 58
STC XSU 3225C		8/2	<b>BOES, KENT</b>	17	E-119	0700-0700	DP 58
<b>CRW2 WEST COAST 15</b>			<b>TORRES, LEONARDO</b>	20	<b>C-15</b>	<b>0700-1900</b>	<b>DP 58</b>
<b>CRW2 REFOREST 16</b>				16 +/-	<b>C-16</b>	<b>0700-1900</b>	<b>DP 58</b>
<b>CRW2 OASIS 18</b>			<b>DIETZ, WILLIAM</b>	20	<b>C-18</b>	<b>0700-1900</b>	<b>DP 58</b>
<b>CRW2 OREGON WOODS</b>			<b>ALFORD</b>	20	<b>C-21</b>	<b>0700-1900</b>	<b>DP 58</b>
DOZ 4641					E-206	0700-0700	DP 58
DOZ PVT E-18 - OILAR			WHITE, JAMES	2	E-18	0700-0700	DP 58
W/T PVT E-23 - SHERER			RICHARDSON, DON	2	E-23	0700-0700	DP 58
W/T PVT E-25 - DUNLAP			DON DUNLAP	2	E-25	0700-0700	DP 58
SOFR KLUSYK		8/4	KLUSYK, MICHAEL J	1	O-185	0700-0700	DP 58
FEMT HUDSON			HUDSON, ROYCE T	1	O-228	0700-0700	DP 58
FEMP SCHROTH	ALS	8/5	SCHROTH, ERIC	1	O-219	0700-0700	DP 58

**6. Work Assignments:**  
 Construct hand and dozer line.  
 Mop-up 100'.  
 Plumb with hose as necessary.

**7. Special Instructions:**  
 Line EMT and Paramedic available throughout Branch V.

**8. Communications**

Name	Ch	Function	Rx Freq	Rx Tone	Tx Freq	Tx Tone	Notes
NIFC C2	1	COMMAND	170.4500	123.0 (T2)	168.1000	123.0 (T2)	HAYDEN HILL
	7						BRANCH V
A/G CDF T24	14	TACTICAL	151.3325	192.8 (T16)	151.3325	192.8 (T16)	*** AIR TO GROUND ***
CALCORD	15	MEDICAL	156.0750	156.7 (T6)	156.0750	156.7 (T6)	
GUARD 24	16	EMERGENCY	168.6250		168.6250	110.9 (T1)	EMERGENCY USE ONLY

**9. Prepared by: Name:**                      Gwyndolyn Ozard                      RESL

Signature:                      Personnel Count: 118

**ICS 204**

Date/Time: 7/23/2020 2200



# ASSIGNMENT LIST (ICS 204 WF)

CONTROLLED UNCLASSIFIED  
INFORMATION//BASIC

<b>1. Incident Name:</b>	<b>2. Operational Period:</b>	<b>3. Branch</b>	<b>Division</b>
<b>GOLD</b>	Date From: 07/24/20    Date To: 07/25/20 Time From: 0700    Time To: 0700	<b>V</b>	<b>T</b>

<b>4. Operations Personnel:</b>	Page 1 of 1 <b>Tango</b>
---------------------------------	--------------------------

Operations Section Chief: <b>Monty Smith, Jeremy Roesler (T)</b>	Night Ops: <b>Joshua Bischof</b>
Branch Director: <b>Chris Martinelli</b>	Branch Safety: <b>Tim Irwin</b>
Division/Group Supervisor: <b>Shane Galvez, Steve Cabrera (T)</b>	Air Attack:

5. Resources Assigned:	** Resources Below in Bold are 12 Hour **							
Resource Identifier	ALS	LWD	Leader	Personnel	Request #	Hours	Reporting Location	
<b>STC LNF 3615C</b>			<b>TATLOW, BRANDON J</b>	26	<b>E-171</b>	<b>0700-1900</b>	<b>DP 54</b>	
STC XMR 2140C	ALS	8/2	GLENN, DAVID	22	E-11	0700-0700	DP 54	
STG+						0700-0700	DP 54	
STG+						0700-0700	DP 54	
<b>CRW2 OASIS 17</b>		<b>8/5</b>	<b>FINCH, DEREK</b>	20	<b>C-17</b>	<b>0700-1900</b>	<b>DP 54</b>	
STL GOLD 1**					E-9001	0700-0700	DP 54	
**DOZ NEU 2341			ROGERS, BRENT		E-7	0700-0700	DP 54	
**DOZ NEU 2342			REUSZE, MICHAEL		E-17	0700-0700	DP 54	
DOZ PVT E-9 - THOMPSON				2	E-9	0700-0700	DP 54	
DOZ PVT E-167 - NORTHSTATE		8/4	RODRIGUE, DANA	2	E-167	0700-0700	DP 54	
W/T PVT E-22 - OILAR			HAWKS, TODD	2	E-22	0700-0700	DP 54	
W/T PVT E-24 - INGRAHAM			INGRAHAM, BRIAN	2	E-24	0700-0700	DP 54	

**6. Work Assignments:**  
 Construct hand and dozer line.  
 Mop-up 100'.  
 Plumb with hose as necessary.

**7. Special Instructions:**  
 Line EMT and Paramedic assigned to DIV R, available throughout Branch V.

**8. Communications**

Name	Ch	Function	Rx Freq	Rx Tone	Tx Freq	Tx Tone	Notes
NIFC C2	1	COMMAND	170.4500	123.0 (T2)	168.1000	123.0 (T2)	HAYDEN HILL
NIFC T5	8	TACTICAL	166.7250	123.0 (T2)	166.7250	123.0 (T2)	BRANCH V
A/G CDF T24	14	TACTICAL	151.3325	192.8 (T16)	151.3325	192.8 (T16)	*** AIR TO GROUND ***
CALCORD	15	MEDICAL	156.0750	156.7 (T6)	156.0750	156.7 (T6)	
GUARD 24	16	EMERGENCY	168.6250		168.6250	110.9 (T1)	EMERGENCY USE ONLY

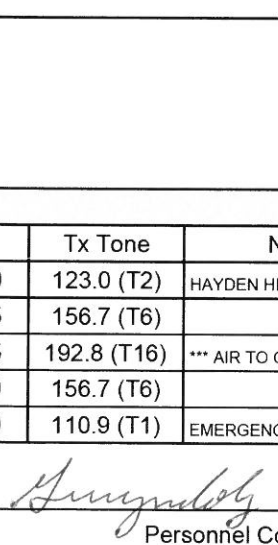
**9. Prepared by: Name:** Gwyndolyn Ozard    RESL

Signature:    Personnel Count: 76

**ICS 204**    Date/Time: 7/23/2020 2200

# ASSIGNMENT LIST (ICS 204 WF)

CONTROLLED UNCLASSIFIED  
INFORMATION//BASIC

<b>1. Incident Name:</b>			<b>2. Operational Period:</b>				<b>3. Branch</b>		<b>Division</b>	
<b>GOLD</b>			Date From: 07/24/20		Date To: 07/25/20		<b>V</b>		<b>W</b>	
			Time From: 0700		Time To: 0700		Page 1 of 1		Whiskey	
<b>4. Operations Personnel:</b>										
Operations Section Chief: <b>Monty Smith, Jeremy Roesler (T)</b>					Night Ops: <b>Joshua Bischof</b>					
Branch Director: <b>Chris Martinelli</b>					Branch Safety: <b>Tim Irwin</b>					
Division/Group Supervisor: <b>Todd Horton</b>					Air Attack:					
<b>5. Resources Assigned:</b>			<b>** Resources Below in Bold are 12 Hour **</b>							
Resource Identifier	ALS	LWD	Leader	Personnel	Request #	Hours	Reporting Location			
STF XKI 5050F		8/3	JONES, BRANDON	18 +/-	E-50	0700-0700	DP 50			
<b>CRW2 LMU CREW1A</b>			<b>WOODWARD, LUKE</b>	9	<b>C-5</b>	<b>0700-1900</b>	<b>DP 50</b>			
CRW1+						0700-0700	DP 50			
CRW1+						0700-0700	DP 50			
<b>CRW2 REFOREST 14</b>		8/5	<b>RINCON, JOSE</b>	20	<b>C-14</b>	<b>0700-1900</b>	<b>DP 50</b>			
<b>CRW2 OASIS 19</b>			<b>DOBBS, LELAND</b>	20	<b>C-19</b>	<b>0700-1900</b>	<b>DP 50</b>			
<b>CRW2 GRIZZLY</b>			<b>HINER, THEODORE</b>	20	<b>C-20</b>	<b>0700-1900</b>	<b>DP 50</b>			
W/T PVT E-27 - ACKLEY				2	E-27	0700-0700	DP 50			
<b>FALM O-267 - KNIGHT FIRE</b>			<b>KNIGHT FIRE</b>	2	<b>O-267</b>	<b>0700-1900</b>	<b>DP 50</b>			
<b>6. Work Assignments:</b>										
Mop-up 100' along HWY 139. Validate, construct, and improve handlines.										
<b>7. Special Instructions:</b>										
Line EMT and Paramedic assigned to DIV R, available throughout Branch V.										
<b>8. Communications</b>										
Name	Ch	Function	Rx Freq	Rx Tone	Tx Freq	Tx Tone	Notes			
NIFC C2	1	COMMAND	170.4500	123.0 (T2)	168.1000	123.0 (T2)	HAYDEN HILL			
VTAC11	10	TACTICAL	151.1375	156.7 (T6)	151.1375	156.7 (T6)				
A/G CDF T24	14	TACTICAL	151.3325	192.8 (T16)	151.3325	192.8 (T16)	*** AIR TO GROUND ***			
CALCORD	15	MEDICAL	156.0750	156.7 (T6)	156.0750	156.7 (T6)				
GUARD 24	16	EMERGENCY	168.6250		168.6250	110.9 (T1)	EMERGENCY USE ONLY			
<b>9. Prepared by: Name:</b> Gwyndolyn Ozard RESL										
Signature: 										
<div style="display: flex; justify-content: space-between; align-items: flex-end;"> <span>ICS 204</span> <span>Date/Time: 7/23/2020 2200</span> <span>Personnel Count: 91</span> </div>										

## ASSIGNMENT LIST (ICS 204 WF)

CONTROLLED UNCLASSIFIED  
INFORMATION//BASIC

<b>1. Incident Name:</b> <p style="text-align: center; font-size: 1.2em;"><b>GOLD</b></p>	<b>2. Operational Period:</b> Date From: 07/24/20      Date To: 07/25/20 Time From: 0700              Time To: 0700	<b>3. Branch</b> <b>Division</b> <p style="text-align: center; font-size: 1.2em;"><b>VII</b></p> <p style="text-align: center; font-size: 1.2em;"><b>Bat 3 IA</b></p>
--	---	--

<b>4. Operations Personnel:</b>		Page 1 of 1
Operations Section Chief: <b>Monty Smith, Jeremy Roesler (T)</b>	Night Ops: <b>Joshua Bischof</b>	
Branch Director:	Branch Safety:	
Division/Group Supervisor:	Air Attack:	

5. Resources Assigned:	** Resources Below in Bold are 12 Hour **						
Resource Identifier	ALS	LWD	Leader	Personnel	Request #	Hours	Reporting Location
STC SHU 9241C		7/31	NOEL, BRIAN J	16	E-5	0700-0700	See Special Instructions
DOZ PVT E-19 - BUSHEY			Ward, Lee	2	E-19	0700-0700	See Special Instructions
DOZ+						0700-0700	See Special Instructions

**6. Work Assignments:**  
 Maintain 3-minute response time.  
 Assist Unit with IA response.

**7. Special Instructions:**  
 Bieber FS: 2 ENG, 1 DOZ  
 Alturas FS: 1 ENG, 1 DOZ  
 Susanville FS: 2 ENG

8. Communications							
Name	Ch	Function	Rx Freq	Rx Tone	Tx Freq	Tx Tone	Notes
NIFC C2	1	COMMAND	170.4500	123.0 (T2)	168.1000	123.0 (T2)	HAYDEN HILL
VTAC11	9	TACTICAL	151.1375	156.7 (T6)	151.1375	156.7 (T6)	
A/G CDF T24	14	TACTICAL	151.3325	192.8 (T16)	151.3325	192.8 (T16)	*** AIR TO GROUND ***
CALCORD	15	MEDICAL	156.0750	156.7 (T6)	156.0750	156.7 (T6)	
GUARD 24	16	EMERGENCY	168.6250		168.6250	110.9 (T1)	EMERGENCY USE ONLY

<b>9. Prepared by: Name:</b>	Gwyndolyn Ozard	RESL	Signature:
<b>ICS 204</b>	Date/Time: 7/23/2020	2200	Personnel Count: 18









# ASSIGNMENT LIST (ICS 204 WF)

CONTROLLED UNCLASSIFIED  
INFORMATION//BASIC

<b>1. Incident Name:</b> <p style="text-align: center; font-weight: bold;">GOLD</p>	<b>2. Operational Period:</b> Date From: 07/24/20    Date To: 07/25/20 Time From: 0700    Time To: 0700	<b>3. Branch</b> <b>Staging</b> <p style="text-align: center; font-weight: bold;">Supp Repair</p>
<b>4. Operations Personnel:</b>		Page 1 of 2

Operations Section Chief: <b>Monty Smith, Jeremy Roesler (T)</b>	Night Ops: <b>Joshua Bischof</b>
Branch Director:	Branch Safety:
Division/Group Supervisor: <b>Don Schroeder</b>	Air Attack:

5. Resources Assigned:	** Resources Below in Bold are 12 Hour **							
Resource Identifier	ALS	LWD	Leader	Personnel	Request #	Hours	Reporting Location	
<b>DOZ+</b>						0700-1900	<b>GOLD ICP</b>	
<b>DOZ+</b>						0700-1900	<b>GOLD ICP</b>	
<b>DOZ+</b>						0700-1900	<b>GOLD ICP</b>	
<b>DOZ+</b>						0700-1900	<b>GOLD ICP</b>	
<b>W/T+</b>						0700-1900	<b>GOLD ICP</b>	
<b>W/T+</b>						0700-1900	<b>GOLD ICP</b>	
<b>W/T+</b>						0700-1900	<b>GOLD ICP</b>	
<b>W/T+</b>						0700-1900	<b>GOLD ICP</b>	
<b>W/T+</b>						0700-1900	<b>GOLD ICP</b>	
<b>W/T+</b>						0700-1900	<b>GOLD ICP</b>	
<b>MAST+</b>						0700-1900	<b>GOLD ICP</b>	
<b>EXC+</b>						0700-1900	<b>GOLD ICP</b>	
<b>EXC+</b>						0700-1900	<b>GOLD ICP</b>	
<b>EXC+</b>						0700-1900	<b>GOLD ICP</b>	
<b>EXC+</b>						0700-1900	<b>GOLD ICP</b>	
<b>GRD+</b>						0700-1900	<b>GOLD ICP</b>	
<b>GRD+</b>						0700-1900	<b>GOLD ICP</b>	
<b>DIVS+</b>						0700-1900	<b>GOLD ICP</b>	

**6. Work Assignments:**  
 Identify and document repair needs.  
 Create and implement Suppression Repair Plan.

**7. Special Instructions:**

8. Communications							
Name	Ch	Function	Rx Freq	Rx Tone	Tx Freq	Tx Tone	Notes
NIFC C2	1	COMMAND	170.4500	123.0 (T2)	168.1000	123.0 (T2)	HAYDEN HILL
CDF T32	12	TACTICAL	151.2425	192.8 (T16)	151.2425	192.8 (T16)	
A/G CDF T24	14	TACTICAL	151.3325	192.8 (T16)	151.3325	192.8 (T16)	*** AIR TO GROUND ***
CALCORD	15	MEDICAL	156.0750	156.7 (T6)	156.0750	156.7 (T6)	
GUARD 24	16	EMERGENCY	168.6250		168.6250	110.9 (T1)	EMERGENCY USE ONLY

<b>9. Prepared by: Name:</b>	Gwyndolyn Ozard	RESL	Signature:
<b>ICS 204</b>	Date/Time: 7/23/2020 2200	Personnel Count: 0	





# SAFETY MESSAGE

## GOLD

20-CA-LMU-0003917 JULY 24, 2020 0700-0700



S  
A  
F  
E  
T  
Y

### CHANGE IN WEATHER

#### STRONG DIURNAL WINDS IN THE AFTERNOON

##### Watch Out

- Strong diurnal, westerly winds in the afternoon
- Afternoon winds correspond with low relative humidity and receptive fuels
- Fire continues to experience growth under these conditions

##### Mitigation

- Keep informed on predicted fire weather conditions and forecasts
- Base all actions on current and expected fire behavior
- Identify escape routes and safety zones, and ensure they are known

S  
A  
F  
E  
T  
Y

### OPERATE WITHIN YOUR LIMITS

#### WORK / REST, QUALIFICATIONS, DRIVING

##### Watch Out

- **Hot weather** can lead to dehydration, heat illness, serious medical emergencies
- **Working beyond capabilities** can lead to a failure to identify risks
- **Unsafe vehicle operation** can lead to accidents and serious/catastrophic injury

##### Mitigation

- Proper nutrition, rest and hydration reduces fatigue and exhaustion emergencies
- Know your qualification level and be honest about capabilities
- Slow down, maintain a safe distance, turn on lights, allow for extra travel time

S  
A  
F  
E  
T  
Y

## COVID-19

REDUCE THE EXPOSURE AND SPREAD BY:

- **Wearing a face covering when:**
  - ✓ In public and unable to maintain six feet social distancing
  - ✓ When you're in the ICP and unable to maintain six feet social distancing
  - ✓ At all times when you are in the food line

E  
V  
E  
R  
Y  
O  
N  
E  
S

R  
E  
S  
P  
O  
N  
S  
I  
B  
I  
L  
I  
T  
Y



*Douglas Michael Ferro*  
**INCIDENT TEAM 4 SAFETY**

REDUCE EXPOSURE BY WEARING A FACE COVERING





Bank A

# ICS 205 - INCIDENT RADIO COMMUNICATIONS PLAN


CONTROLLED UNCLASSIFIED INFORMATION/BASIC

<b>1. Incident Name:</b> GOLD INCIDENT CHANNELS	<b>2. Date/Time Prepared</b> Date: 07/23/2020 Time: 1930	<b>3. Operational Period:</b> Date From: 07/24/20 Time From: 0700 Date To: 07/25/20 Time To: 0700
---	--	---

4. Communications									
Ch#	Function	Name	Assigned To	Rx Freq	Rx Tone	Tx Freq	Tx Tone	Notes	
1	COMMAND	NIFC C2	ALL DIVS	170.4500	123.0 (T2)	168.1000	123.0 (T2)	HAYDEN HILL	
2	COMMAND	NIFC C8	ALL DIVS	169.5375	123.0 (T2)	164.7125	123.0 (T2)	LIKELY MTN	
3	COMMAND	NIFC C9	ALL DIVS	170.0125	123.0 (T2)	165.2500	123.0 (T2)		
4	COMMAND	NIFC C23	ALL DIVS	172.1375	123.0 (T2)	166.9375	123.0 (T2)	WIDOW MTN	
5	TACTICAL	VTAC12	DIV. O	154.4525	156.7 (T6)	154.4525	156.7 (T6)	BRANCH III	
6	TACTICAL	NIFC T1	DIV. R	168.0500	123.0 (T2)	168.0500	123.0 (T2)	BRANCH III	
7			DIV. T					BRANCH V	
8	TACTICAL	NIFC T5	DIV. V	166.7250	123.0 (T2)	166.7250	123.0 (T2)	BRANCH V	
9	TACTICAL	NIFC T7	DIV. W	168.2500	123.0 (T2)	168.2500	123.0 (T2)	BRANCH V	
10	TACTICAL	VTAC11	BAT 3 IA	151.1375	156.7 (T6)	151.1375	156.7 (T6)		
11	TACTICAL	VTAC11	CONTINGENCY	151.1375	156.7 (T6)	151.1375	156.7 (T6)		
12	TACTICAL	NIFC T3	CAL PINES CONT	168.6000	123.0 (T2)	168.6000	123.0 (T2)		
13	TACTICAL	CDF T34	SUPP REPAIR	151.4675	192.8 (T16)	151.4675	192.8 (T16)		
14	MEDICAL	CALCORD	ALL DIVS	156.0750	156.7 (T6)	156.0750	156.7 (T6)		
15	TACTICAL	A/G CDF T24	ALL DIVS	151.3325	192.8 (T16)	151.3325	192.8 (T16)	*** AIR TO GROUND***	
16	EMERGENCY	GUARD 24	EMERGENCY	168.6250		168.6250	110.9 (T1)	EMERGENCY USE ONLY	
17	TACTICAL	CDF T32		151.2425	192.8 (T16)	151.2425	192.8 (T16)		
18							192.8 (T16)		
19									
20	EMERGENCY	GUARD 24	EMERGENCY	168.6250		168.6250	110.9 (T1)	EMERGENCY USE ONLY	

**5. Special Instructions**

CURRENT CLONE FOR JULY 24, 2020 "GUARD 24"

<b>6. Prepared by (Communications Unit Leader):</b> Name: MIKE HEYFRON - COM1	Signature: 
ICS 205 - CONTROLLED UNCLASSIFIED INFORMATION/BASIC	NIMS IAP Date/Time: 07/23/20 1930



BANK B

CONTROLLED UNCLASSIFIED INFORMATION/BASIC

**ICS 205 - INCIDENT RADIO COMMUNICATIONS PLAN**

1. Incident Name: <b>GOLD</b>		2. Date/Time Prepared		3. Operational Period:				
Incident Channels		Date: 07/23/2020	Date From: 07/24/20	Date To: 07/25/20				
		Time: 1930	Time From: 0700	Time To: 0700				
4. Communications								
Ch#	Function	Name	Assigned To	Rx Freq	Rx Tone	Tx Freq	Tx Tone	Notes
1	COMMAND	NIFC C2	ALL DIVS	170.4500	123.0 (T2)	168.1000	123.0 (T2)	HAYDEN HILL
2	COMMAND	NIFC C8	ALL DIVS	169.5375	123.0 (T2)	164.7125	123.0 (T2)	LIKELY MTN
3	COMMAND	NIFC C9	ALL DIVS	170.0125	123.0 (T2)	165.2500	123.0 (T2)	
4	COMMAND	NIFC C23	ALL DIVS	172.1375	123.0 (T2)	166.9375	123.0 (T2)	WIDOW MTN
5	TACTICAL	CDF T13	DIV. B	151.3775	192.8 (T16)	151.3775	192.8 (T16)	BRANCH I
6	TACTICAL	CDF T27	DIV. D	159.3075	192.8 (T16)	159.3075	192.8 (T16)	BRANCH I
7	TACTICAL	CDF T28	DIV. F	151.1825	192.8 (T16)	151.1825	192.8 (T16)	BRANCH I
8	TACTICAL	VTAC12	DIV. G	154.4525	156.7 (T6)	154.4525	156.7 (T6)	BRANCH I
9	TACTICAL	VTAC11	BAT 3 IA	151.1375	156.7 (T6)	151.1375	156.7 (T6)	
10	TACTICAL	NIFC T3	CONTINGENCY	168.6000	123.0 (T2)	168.6000	123.0 (T2)	
11	TACTICAL	NIFC T3	CAL PINES CONT	168.6000	123.0 (T2)	168.6000	123.0 (T2)	
12	TACTICAL	CDF T32	SUPP REPAIR	151.2425	192.8 (T16)	151.2425	192.8 (T16)	
13								
14	TACTICAL	A/G CDF T24	ALL DIVS	151.3325	192.8 (T16)	151.3325	192.8 (T16)	*** AIR TO GROUND ***
15	MEDICAL	CALCORD	ALL DIVS	156.0750	156.7 (T6)	156.0750	156.7 (T6)	
16	EMERGENCY	GUARD 24	EMERGENCY	168.6250		168.6250	110.9 (T1)	EMERGENCY USE ONLY
17								
18								
19								
20	EMERGENCY	GUARD 24	EMERGENCY	168.6250		168.6250	110.9 (T1)	EMERGENCY USE ONLY

5. Special Instructions  
 CURRENT CLONE FOR JULY 24, 2020 "GUARD 24"

6. Prepared by (Communications Unit Leader): Name: MIKE HEYFRON - COML  
 ICS 205 - CONTROLLED UNCLASSIFIED INFORMATION/BASIC

Signature:   
 Date/Time: 07/23/20 1930

<b>MEDICAL PLAN</b> <b>ICS 206</b>	<b>INCIDENT NAME</b>	<b>DATE &amp; TIME PREPARED</b>	<b>OPERATIONAL PERIOD</b>
	<b>GOLD</b>	<b>7/23/2020 1700HRS</b>	<b>7/24/20-7/25/20 0700-0700HRS</b>

<b>MEDICAL AID STATIONS</b>			
<b>NAME</b>	<b>LOCATION</b>	<b>CONTACT NUMBER</b>	<b>SERVICE LEVEL</b>
CAL-MAT	Incident Base		RN/MD

<b>TRANSPORTATION (indicate air or ground)</b>			
<b>NAME</b>	<b>LOCATION</b>	<b>CONTACT NUMBER</b>	<b>SERVICE LEVEL</b>
Semsa Ground Ambulance	Susanville, CA.	530-257-5575	ALS
Semsa Air Ambulance	Susanville & Adin CA	530-257-5575	RN

<b>INCIDENT AMBULANCES</b>	
Mountain Medics Ambulance	4x4 ALS Fireline Qualified Ambulance

<b>HOSPITALS</b>								
<b>NAME</b>	<b>ADDRESS</b>	<b>PHONE #</b>	<b>TRAVEL TIME- minutes</b>		<b>Trauma Center</b>	<b>Burn Center</b>	<b>Helipad</b>	
			<b>AIR</b>	<b>GROUND</b>				
Banner Lassen Hospital	1800 Spring Ridge Rd Susanville, CA	530-252-2238	22	55	No	<input type="checkbox"/> No	<input checked="" type="checkbox"/> Yes	
Mercy Medical Center	2175 Rosaline Ave. Redding, CA.	530-225-7201	35	120	Level 2	<input type="checkbox"/> No	<input type="checkbox"/> No	
U.C Davis Medical Center	2315 Stockton Blvd. Sacramento, CA.	916-734-3790	70	275	Level 1	<input checked="" type="checkbox"/> Yes	<input checked="" type="checkbox"/> Yes	

**MEDICAL EMERGENCY PROCEDURES**

**LINE EMERGENCY:**  
 Crew Supervisor will contact Division Supervisor with patient complaint/condition and location.  
 - Division Group Supervisor Contacts:  
 1. Closest EMS resource  
 2. Communications Unit  
 - Communications Unit Contacts:  
 1. Ground or Air Ambulance as requested.  
 2. Medical Unit (916) 622-3371  
 3. Safety  
 4. Operations  
 - Division Supervisor or designee will serve as point of contact and run medical emergency on assigned channel.  
 1. A pre-assigned tactical frequency (CALCORD) should be used for IWI and only for duration of the emergency.  
 - Communications Unit will clear the Command channel for emergency traffic as needed for duration of the need.

**CAMP EMERGENCY:**  
 Contact Communications on CALCORD or @ 707-890-6317 with patient complaint/condition and location. Communications will respond appropriate medical response.  
 - Communications contacts:  
 1. Medical Unit  
 2. Safety  
 3. Logistics  
 4. Operations  
 5. Crew Supervisor  
 6. Comp/Claims

**INCIDENT REPORTING PROCEDURES**

CHIEF COMPLAINT \_\_\_\_\_  
 LOCATION OF PATIENT \_\_\_\_\_  
 POINT OF CONTACT \_\_\_\_\_  
 TRANSPORTATION REQUESTED BY: AIR \_\_\_ GROUND \_\_\_  
 POINT OF PICKUP \_\_\_\_\_  
 LAT \_\_\_\_\_ LONG \_\_\_\_\_  
 PATIENT UNIT ID \_\_\_\_\_  
 IS A LINE MEDIC WITH THE PATIENT: YES \_\_\_ NO \_\_\_  
 AGE \_\_\_\_\_  
 SEX: MALE \_\_\_ FEMALE \_\_\_  
 ALL EMERGENCIES---Secure the area and identify witnesses for later investigation. Keep an accurate log of events.

<b>HOSPITAL</b>	<b>LAT</b>	<b>LONG</b>
<b>BANNER LASSEN</b>	<b>40 26.27</b>	<b>120 37.67</b>
<b>MERCY MEDICAL</b>	<b>41 19.11</b>	<b>122 19.20</b>
<b>U.C DAVIS</b>	<b>38 33.28</b>	<b>121 27.35</b>

PREPARED BY: (Medical Unit Leader) Darin Nelson

Signature: 

APPROVED BY: (Safety Officer) Bill Murphy

Signature: 

# ***TRAINING SPECIALIST MESSAGE***

**A Training Specialist is available for trainees on the incident.**

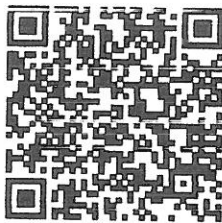
**All State, Federal and local government agency Trainees working on Position Task Books will need to register with the Incident Training Specialist in order to receive proper credit for your assignment.**

**The TNSP is located on Trailer Row next to Safety.**

***Dennis Martin***

**Training Specialist**

**(707) 479-8421**



**Register using the QR Code**



# CAL-FIRE INCIDENT MANAGEMENT TEAM IV



## 24HR LINE RESOURCE - 2 OPERATOR

EMERGENCY SHIFT TICKET and EVALUATION FORM  
The responsible Government Officer will complete this form each shift.

Contractor Name: **THE BEST DOZERS LLC**  
Operator #1: **FIRST & LAST**  
Operator #2: **FIRST & LAST**

Incident or Project Name: **MISSION**  
Request Number: **E-444**  
Agreement Number: **CA-MMU-018115**

Equipment Make: **1999 PETERBILT 379**  
Equipment Model / Type: **TRANSPORT 18 WHEEL**  
License Number: **12345A1**

Operator Furnished By:  Contractor  Government

Operating Supplies Furnished By:  Contractor  Government

Equipment Status:  Under Agreement  Released by Government  Withdrawn by Contractor

Inspected:  **9/5**  **9/6**

Released by Government:  **0701**  **0700**

Withdrawn by Contractor:  **2400**  **0700**

Remarks/Comments: **2 OPERATORS**

Vendor Rating: **NO DAMAGE / NO CLAIM**

Govt. Rep. Name and Position - PRINT: **NO DAMAGE / NO CLAIM**

Print Your Name: **NO DAMAGE / NO CLAIM**

Govt. Rep. Signature: **NO DAMAGE / NO CLAIM**

Contractor Signature: **John Smith**

Operator's Cooperation Level: **9/6/17**

Date: **9/6/17**

Time: **0700**

Overall Performance: **CAL FIRE 297 (Rev 3-2011)**

\* NOTE: any rating of POOR requires an explanation in Comment Section.  
\*\* Final evaluation or for more documentation, use a CALFIRE Form 230 or equivalent.

## 24HR / 12HR TRANSITION SHIFT TICKET

EMERGENCY SHIFT TICKET and EVALUATION FORM  
The responsible Government Officer will complete this form each shift.

Contractor Name: **THE BEST DOZERS LLC**  
Operator #1: **FIRST & LAST**  
Operator #2: **FIRST & LAST**

Incident or Project Name: **MISSION**  
Request Number: **E-444**  
Agreement Number: **CA-MMU-018115**

Equipment Make: **1999 PETERBILT 379**  
Equipment Model / Type: **TRANSPORT 18 WHEEL**  
License Number: **12345A1**

Operator Furnished By:  Contractor  Government

Operating Supplies Furnished By:  Contractor  Government

Equipment Status:  Under Agreement  Released by Government  Withdrawn by Contractor

Inspected:  **9/6**  **9/6**

Released by Government:  **0701**  **2400**

Withdrawn by Contractor:  **1900**  **2400**

Remarks/Comments: **2 OPERATORS**

Vendor Rating: **NO DAMAGE / NO CLAIM**

Govt. Rep. Name and Position - PRINT: **NO DAMAGE / NO CLAIM**

Print Your Name: **NO DAMAGE / NO CLAIM**

Govt. Rep. Signature: **NO DAMAGE / NO CLAIM**

Contractor Signature: **John Smith**

Operator's Cooperation Level: **9/5/17**

Date: **9/5/17**

Time: **1900**

Overall Performance: **CAL FIRE 297 (Rev 3-2011)**

\* NOTE: any rating of POOR requires an explanation in Comment Section.  
\*\* Final evaluation or for more documentation, use a CALFIRE Form 230 or equivalent.

## 12HR LINE RESOURCE - 1 OPERATOR

EMERGENCY SHIFT TICKET and EVALUATION FORM  
The responsible Government Officer will complete this form each shift.

Contractor Name: **THE BEST DOZERS LLC**  
Operator #1: **FIRST & LAST**  
Operator #2: **FIRST & LAST**

Incident or Project Name: **MISSION**  
Request Number: **E-555**  
Agreement Number: **CA-MMU-018115**

Equipment Make: **2004 CAT**  
Equipment Model / Type: **D6N / TYPE II E**  
License Number: **MMU-0000015955**

Operator Furnished By:  Contractor  Government

Operating Supplies Furnished By:  Contractor  Government

Equipment Status:  Under Agreement  Released by Government  Withdrawn by Contractor

Inspected:  **9/7**  **9/7**

Released by Government:  **0700**  **1900**

Withdrawn by Contractor:  **1900**  **2400**

Remarks/Comments: **1 OPERATOR**

Vendor Rating: **NO DAMAGE / NO CLAIM**

Govt. Rep. Name and Position - PRINT: **NO DAMAGE / NO CLAIM**

Print Your Name: **NO DAMAGE / NO CLAIM**

Govt. Rep. Signature: **NO DAMAGE / NO CLAIM**

Contractor Signature: **John Smith**

Operator's Cooperation Level: **9/5/17**

Date: **9/5/17**

Time: **1900**

Overall Performance: **CAL FIRE 297 (Rev 3-2011)**

\* NOTE: any rating of POOR requires an explanation in Comment Section.  
\*\* Final evaluation or for more documentation, use a CALFIRE Form 230 or equivalent.

## 24HR IN CAMP RESOURCE

EMERGENCY SHIFT TICKET and EVALUATION FORM  
The responsible Government Officer will complete this form each shift.

Contractor Name: **THE BEST CAMP LLC**  
Operator #1: **FIRST & LAST**  
Operator #2: **FIRST & LAST**

Incident or Project Name: **MISSION**  
Request Number: **E-333**  
Agreement Number: **CA-MMU-018115**

Equipment Make: **TENT**  
Equipment Model / Type: **WESTERN SHELTER 19X35**  
License Number: **MMU-0000015950**

Operator Furnished By:  Contractor  Government

Operating Supplies Furnished By:  Contractor  Government

Equipment Status:  Under Agreement  Released by Government  Withdrawn by Contractor

Inspected:  **9/2**  **9/2**

Released by Government:  **0001**  **2400**

Withdrawn by Contractor:  **2400**  **2400**

Remarks/Comments: **(4) TENTS, CANOPY WIDES FLOOR & INSULATED ROOF 570sq ft**

Vendor Rating: **NO DAMAGE / NO CLAIM**

Govt. Rep. Name and Position - PRINT: **NO DAMAGE / NO CLAIM**

Print Your Name: **NO DAMAGE / NO CLAIM**

Govt. Rep. Signature: **NO DAMAGE / NO CLAIM**

Contractor Signature: **John Smith**

Operator's Cooperation Level: **9/5/17**

Date: **9/5/17**

Time: **1900**

Overall Performance: **CAL FIRE 297 (Rev 3-2011)**

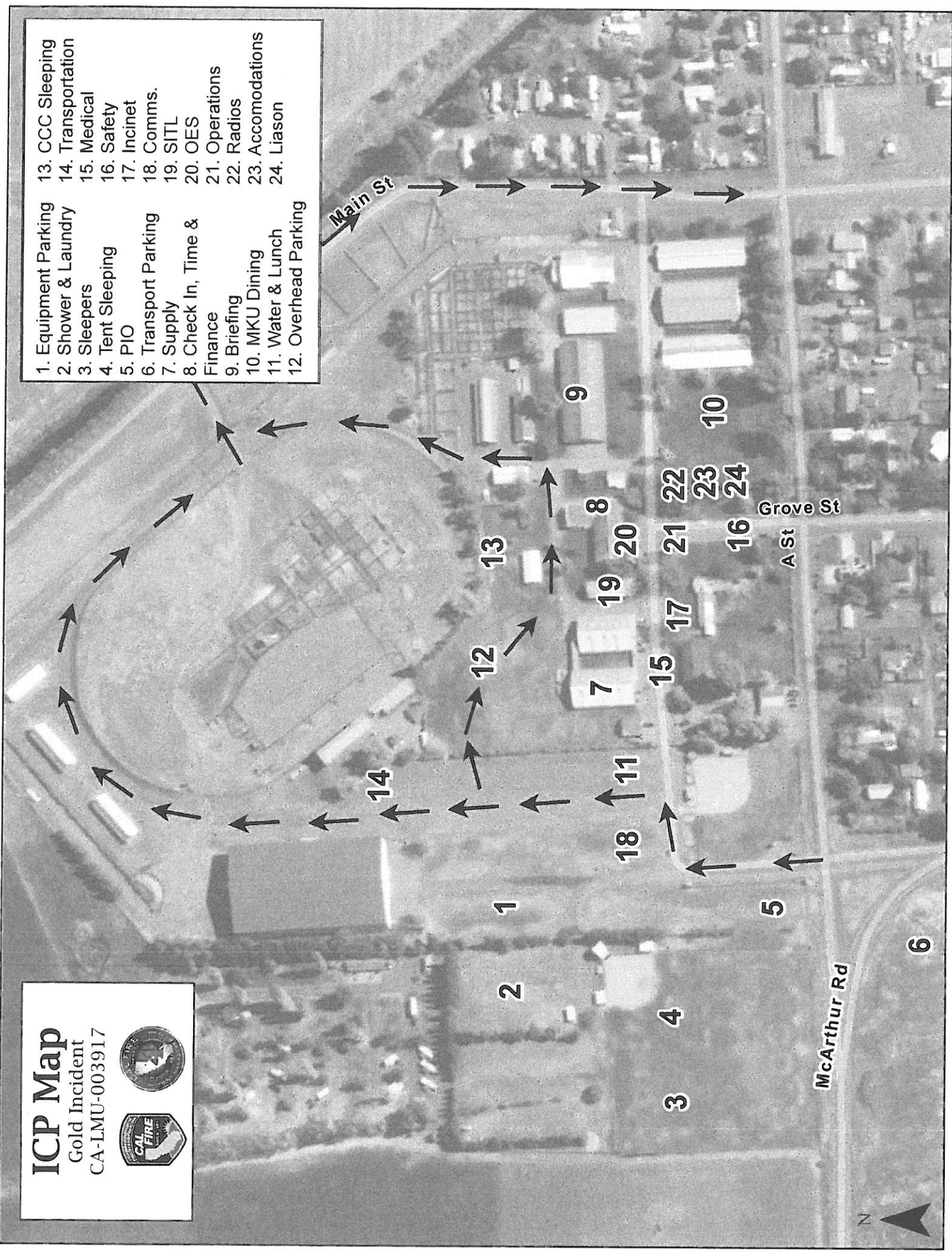
\* NOTE: any rating of POOR requires an explanation in Comment Section.  
\*\* Final evaluation or for more documentation, use a CALFIRE Form 230 or equivalent.



**ICP Map**  
 Gold Incident  
 CA-LMU-003917

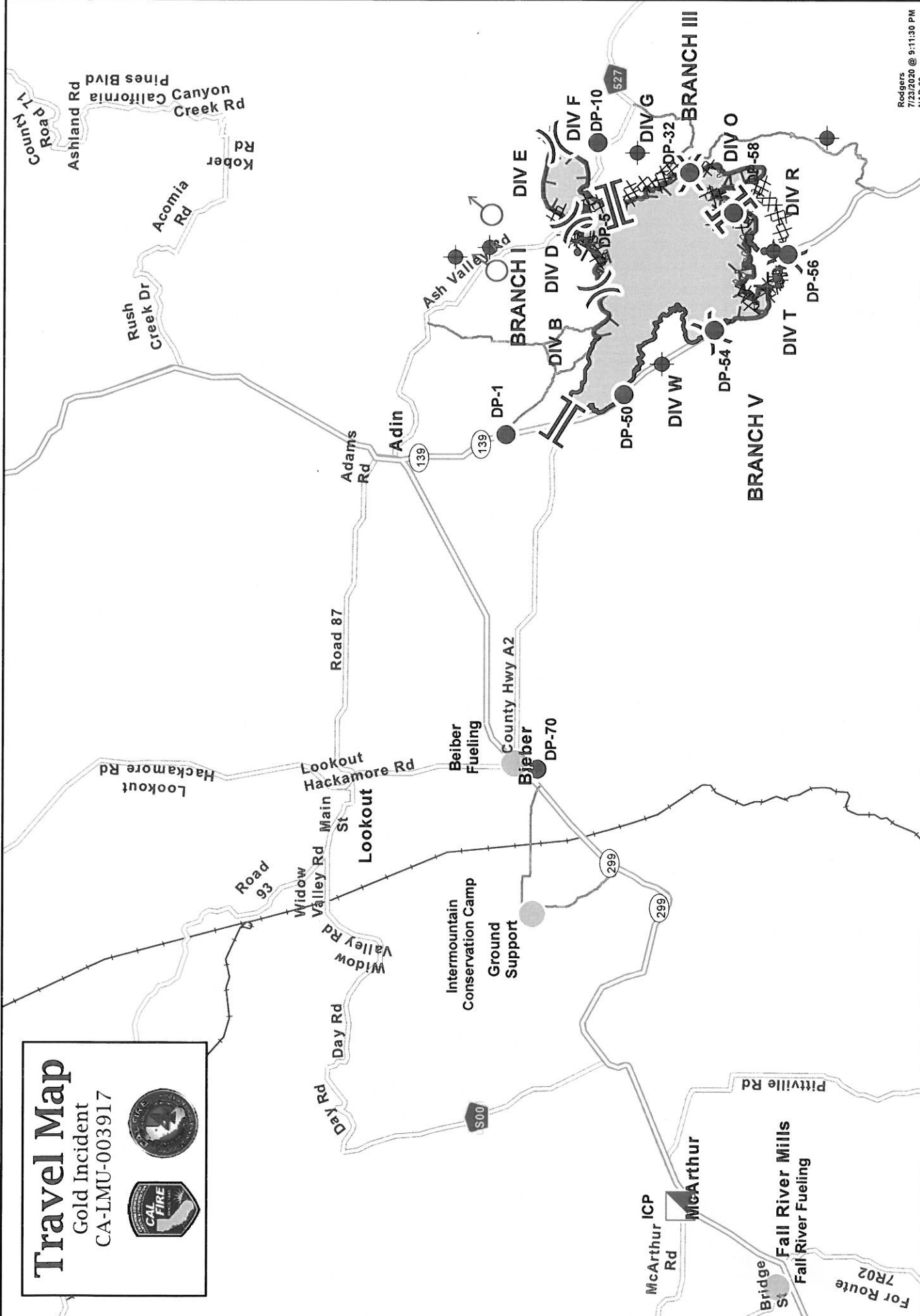



- 1. Equipment Parking
- 2. Shower & Laundry
- 3. Sleepers
- 4. Tent Sleeping
- 5. PIO
- 6. Transport Parking
- 7. Supply
- 8. Check In, Time & Finance
- 9. Briefing
- 10. MKU Dining
- 11. Water & Lunch
- 12. Overhead Parking
- 13. CCC Sleeping
- 14. Transportation
- 15. Medical
- 16. Safety
- 17. Incinet
- 18. Comms.
- 19. SITL
- 20. OES
- 21. Operations
- 22. Radios
- 23. Accomodations
- 24. Liason



# Travel Map

Gold Incident  
CA-LMU-003917



Redgers  
7/27/02 @ 9:11:30 PM  
MAD:BA

0 3 6 12 Miles

0 10,000 20,000 30,000 60,000 Feet

Incident Command Post (Square with 'I')

Staging Area (Circle with 'S')

Drop Point (Circle with 'D')

Water Source (Circle with 'W')

Helibase (Circle with 'H')

Helispot (Circle with 'H')

Spot Fire (Circle with 'S')

Other (Circle with 'O')

Dip Site (Circle with 'D')

Uncontrolled Fire Edge (Dashed line)

Completed Dozer Line (Cross-hatched area)

Completed Line (Solid line)

Proposed Dozer Line (Line with 'X' markers)

Hand Line (Line with 'H')

# CAL FIRE

## INCIDENT MANAGEMENT TEAM

### WATER USAGE PLAN

#### *California Drought Emergency*

The following shall be considered and implemented by all fire resources as a means to provide maximum efficiencies when utilizing water resources, while minimizing the impacts to private and public water supplies. Accountability shall be maintained for all water supplies that are utilized and care should be applied to ensure proper replacement and/or reimbursement to the supplier/ owner.

#### **Fireline personnel-** (During mop up operations)

- Use of Pencil Hose and Garden Nozzles with Shut-Offs.
- Use of Back pumps.
- Dry Mop-up and consolidation of heavy fuels to areas where they can burn out safely
- Locate/ Relocate Firelines to lighter fuels or natural barriers when safe.
- Set up and use portable tanks in anticipation of longer transport times for Water Tenders.
- Use of foams, gels and other water enhancers.
- Evaluate need to mop up in excess of 200 feet from fireline

#### **Road Maintenance and Repair-**

- Monitor and water roads only when and where needed.
- Water when most effective (evening and nights).
- Use chemical treatments when available (Magchloride, Omni bind ect).
- Consider use of tertiary or treated water (sp)

#### **Aviation Operations-**

- Use of Gels, Foams and Retardants. Set up portable plants.
- Consider Blivits and Pencil hose for interior mop up operations as opposed to numerous bucket drops.
- Establish and use pre-use agreements for existing and known water sources.
- Use large watershed dip sites when able. Minimize use of small, static ponds and lakes.
- Maintain accountability of water used and locations of dip sites.
- Evaluate need for interior bucket drops

#### **Private Water Supplies-**

- Notify property owner as early as possible.
- Minimize usage and develop alternative water supplies when and where appropriate.
- Track usage (meter, 214 form) and develop a plan to replace water.
- Make arrangements for reimbursement and damage claims if needed.

#### **Public/ Municipal Water Supplies-**

- Notify Agency as soon as possible and request a representative to the incident.
- Identify fill areas and request metering devices. Place on incident map.
- Use alternative or reclaimed water sources when available. Place on incident map.
- Make arrangements for reimbursement and damage claims if needed.

#### **Management and Supervision-**

- Use leaders intent and establish Water Conservation as an Management Objective.
- Consider complexity of water use on incidents. Establish a Water Supply Group Supervisor to coordinate additional resources to support the incident needs.
- Complete the Water Usage Report daily and turn in to Finance
- Review this check list and brief daily.

# WATER USAGE REPORT

DATE: \_\_\_\_\_  
Example: 8/14/13

WORK LOCATION: \_\_\_\_\_  
Example: DIV A

REQUEST #: \_\_\_\_\_  
Example: E-23

AGENCY or VENDOR NAME: \_\_\_\_\_  
Examples: CAL FIRE, AAA Water, etc.

RESOURCE ID: \_\_\_\_\_  
Examples: WT51, C309, etc.

## DROP FORMS OFF IN FINANCE EVERY DAY

✓ One	WATER SOURCE LOCATION <small>Address, DP #, Lat-Long, etc</small>	Hydrant	Open source i.e. pond, reservoir	Tank	Gallons Used For Fire Fighting	Gallons Used For Incident Support	Property Owner, Contact Info, Remarks, etc.
		Check One			Gallons Used		

**Additional Information:**

The intent of this document is to track, record and validate the amount of water used on an incident.  
 It is not intended to review the performance of equipment using the water on an incident.



## UNIT LOG (ICS 214)

<b>1. Incident Name:</b> <p style="text-align: center;"><b>GOLD</b></p>	<b>2. Operational Period:</b> Date From: 7/24/20    Date To: 7/25/20 Time From: 0700    Time To: 0700
--	--

<b>3. Unit Name/Designators</b>	<b>4. Unit Leader (Name and ICS Position)</b>
---------------------------------	---

5. Personnel Assigned/Designators		
NAME	ICS POSITION	HOME BASE

**6. Activity Log (Continue on Reverse)**

TIME	MAJOR EVENTS

<b>7. Prepared By:</b>	<b>Date/Time:</b>
------------------------	-------------------

