

INCIDENT ACTION PLAN

GOLD INCIDENT

CA-LMU-003917

Thursday



OPERATIONAL PERIOD

7/30/2020 0700

to

7/31/2020 0700



Briefing Frequency - VTAC 13

ORGANIZATION ASSIGNMENT LIST (ICS 203)

1. Incident Name: <b style="text-align: center;">GOLD		2. Operational Period: Date From: 7/30/2020 Date To: 7/31/2020	
		Time From: 0700 Time To: 0700	
3. Incident Commander(s) and Command Staff:		7. Operation Section:	
IC/UC's	Dave Russell, Mike Crites, Darryl Laws (T), George Huang (T), Charlie Blankenheim (T)	Operations	Monty Smith, Jeremi Roesler (T)
Deputy	Eddy Moore	Deputy Operations	Shane Lauderdale
Safety Officer	Doug Ferro, Bill Murphy (T)	Night Ops	Joshua Bischof
Information Officer	Steve Kaufmann, Chris Harvey (T)	Staging Area	Bieber Staging Chris Atkins
Liaison Officer	Dave Pender, Ron Karlen (T)	Branch	I
LELO	Josh Allen, LT. Anthony Bertain	Division/Group	B/D Larry Turman, Pat Benninghoven
4. Agency/Organization Representatives:		Division/Group	E/F Cole Periera
Agency/Organization	Name	Division/Group	
LMU Line Officer	Jim Ferguson	Division/Group	
CAL OES	Pat Titus	Division/Group	
CCC	Alex Luquin	Division/Group	
CDCR	Lt. Jeremy Micone	Branch	III Steven Ward
Lassen Co. SO	Dean Growden	Division/Group	G Todd Horton
Modoc Co. SO	Tex Doway	Division/Group	O Dennis Lange, Brian Riley(T)
CHP	Danny Kotsier	Division/Group	
Lassen Co. OES	Silas Rojas	Division/Group	
Modoc Co. OES	Heather Hadwick	Branch	V Spencer Andreis
CAL TRANS	Jordan Wymer	Division/Group	R Robert Morales
BLM	Al Savage	Division/Group	W/T Matthew Barnes
		Division/Group	
		Division/Group	
		Division/Group	
		Division/Group	
		Branch	VII
5. Planning Section:		Division/Group	Bat 3 IA
Chief	Chris Burch	Division/Group	
Deputy	David Shy	Division/Group	
Resource Unit	Coby Dyche, Gwyndolyn Ozard, Jim Irving, Brian Torosian (T), David Newell (T)	Branch	Contingency
Situation Unit	D. O'Neil, D. Guillani, J. Pangburn	Division/Group	Cal Pines Cont. Jaime Hidalgo (T)
Documentation Unit	Ginger Haight, Allyson Liang	Division/Group	East Cont.
Demobilization Unit	Chris Lynch, Matt Brady (T)	Division/Group	
GISS	Suzann Leiningner	Branch	Supp Repair Guy Anderson, Shanna Kuempel (
FBAN	Tim Chavez	Division/Group	
IMET	Jeff Tonkin	Division/Group	
Training Tech. Spec	Dennis Martin	Air Operations Branch	
Crew Tech. Spec	Jen Corning	Air Support Group Supervisor	Tim Perkins
Hired Equip Tech Spec	Tim Bingham	Air Tactical Group Supervisor	Skye McGregor
6. Logistics Section		Helibase Manager	Ray Gomez
Chief	Matt Reich		
Deputy	Mathew Brandt	8. Finance/Administration Section:	
Supply Unit	Shawn Burris	Chief	Mara Zaver
Facilities Unit	Travis Heard, Matt Brown (T)	Deputy	Rob Jenkins
Ground Support Unit	Conor Stapleton	Time Unit	Greg Tunzi
Communications Unit	Mike Heyfron (T)	Procurement Unit	Courtney Arebalo
Medical Unit	Darin Nelson, Daniel Hauer	Comp/Claims Unit	Alyssa Hagerman
Hotel Tech. Spec.	Matt Aldrich	Cost Unit	Angela Davidson
Prepared By: Name: David Shy Position/Title: PSC Signature: _____			
ICS 203		Date/Time: 7/29/2020 2300 hours	

Fire and COVID-19 Briefing Checklist

Self-Awareness / Screening

- Immediately separate yourself from others.
- Notify supervisor if you or others experience:
 - Cough, more than expected
 - Shortness of breath or difficulty breathing
 - New loss of taste or smell
 - Fever
 - Chills
 - Sore throat
 - Muscle pain
- Review and follow crew and division plans to isolate, triage, and transport symptomatic personnel.

Hygiene on the Fireline

- Properly wash or sanitize your hands often, especially before and after eating or entering a public place, and after coughing or sneezing.
- Avoid handshakes and communal use items.
- Maintain a supply of hand sanitizer and hand wipes. Inform supervisor of needed resupply.
- Disinfect high touch surfaces often:
 - Radios, phones, doors, pumps, fuel cans, etc.

Social Distancing and Protective Equipment

- Initiate, practice, and remind others of social distancing.
- Conduct briefings and conversations outdoors and at least 6 feet apart.
- Utilize face coverings as a tool when practical.
- Clean or replace dirty face coverings, equipment, and PPE.

Communications

- Face coverings and social distancing complicate communications. Ensure effective sender/receiver messaging.

Protect yourself, your crew, and your camp!

Find more information: <https://www.nwccg.gov/coronavirus>.

NFES 002646 (06/2020)



Gold Fire Incident Weather Forecast

FORECAST NO: 9 D/N
 PREDICTION FOR: Thursday - 24 Hour Shift
 SHIFT DATE: July 30, 2020
 FORECAST ISSUED: 2000 PDT July 29, 2020

NAME OF FIRE: Gold Fire
 UNIT: Lassen Modoc
 Incident Meteorologist: Jeff Tonkin

Email **Observations** to: jeff.tonkin@noaa.gov or Text to cell: (707) 672-3386 or Radio to Comms

...CRITICALLY LOW AFTERNOON RELATIVE HUMIDITY AND VERY POOR RECOVERIES THROUGH SATURDAY...

WEATHER DISCUSSION: A very dry air mass will persist over the region with single digit daytime RH's along with very poor nighttime recoveries (30-40%) will continue through Friday. In addition...gusty westerly winds return to the perimeter each afternoon with peak wind speeds occurring between 1500 and 1900 PDT. Winds speeds during this time frame will range from 8 to 12 mph sustained with gusts 20 to 25 mph.

TODAY (THURSDAY DAYTIME):

WEATHER: Sunny.
MAX TEMPERATURES: 86 - 91
MIN HUMIDITY 4500 ft: 7 - 11 %
WIND: East and Southeast 3 to 6 mph until 1300....then increasing to West and Southwest 7 to 12 mph with gusts 20-25 mph until 1900 PDT. Winds diminishing thereafter.

LAL: 1 **CWR:** 0% **HAINES:** 5
STABILITY / INVERSION: Unstable.
SMOKE TRANSPORT WIND: West 15 mph.

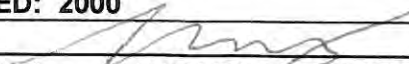
TONIGHT:

WEATHER: Clear...very low RH recoveries.
MIN TEMPERATURES: 45-50.
MAX HUMIDITY: 30-35%.
WINDS (EYE LEVEL): Downslope or east 3 to 5 mph.

FRIDAY / FRIDAY NIGHT: Sunny and continued very dry. Max Temps: 86 - 91. Min RH: 8-13%. Max RH: 30-40%. Wind: Light Southeast early 3 to 6 mph...Becoming West around 1300 and increasing to 7 to 12 with gusts to 20 mph through 1800 PDT. Winds diminishing thereafter.

Extended Forecast	Sat Jul 31	Sun Aug 1	Mon Aug 2	Tue Aug 3
Sky / Wx	Very Dry, Breezy in the Afternoon	Very Dry, Breezy In the afternoon	Sunny	Sunny
Wind:	W 8-12 mph Gust 20-25 mph	W 6 - 10 mph Gust 15-20 mph	W 4 -8 mph Gust 15 mph	W 6 -10 mph Gust 15 mph
Max Temp / Min RH	85-90° 10-15%	85-90° 10-15%	85-90° 12 -17%	84-89° 14-19%
Min Temp / Max RH	50-55° 45-55%	51-56° 35-45%	55-59° 45-55%	54-58° 52-57%
CWR /Haines/ LAL	0% / 3 / 1	0% / 3 / 1	0% / 3 / 1	0% / 3 / 1

FIRE BEHAVIOR FORECAST

FORECAST NUMBER: 9	TYPE OF FIRE: WILDLAND
FIRE NAME: GOLD	OPERATIONAL PERIOD: 7/30/2020
DATE ISSUED: 7/29/2020	TIME ISSUED: 2000
UNIT: LASSEN-MODOC UNIT, MODOC NF, AND BLM-NOD	SIGNED: 
	Typed/printed: TIM CHAVEZ FBAN

INPUTS

WEATHER SUMMARY: VERY LOW HUMIDITY DAY AND NIGHT. HAINES = 5 SEE IMET FORECAST



THESE QR CODES WILL TAKE YOU TO THE PORTABLE RAW'S STATION DATA. ON THE RIGHT IS FOR GOLD1 WHICH IS ON HWY 139 ABOVE HAYDEN HILL RD. THE LEFT QR IS FOR GOLD 2 IN ASH VALLEY.



GENERAL: SUNRISE 0559, SUNSET 2023—14 HOURS 24 MIN DAYLIGHT

FUELS:

- SPOT FIRES CONTINUE TO BE A PROBLEM MULTIPLE DAYS AFTER FIRE IS LINED.
- ACTIVITY INCREASES EVERY AFTERNOON, A RESULT OF LOWEST RH AND SUNLIGHT INTENSITY PEAK. PROBABILITY OF IGNITION 100% AT 1400, 55% AT 0300.
- ENERGY RELEASE COMPONENT OF THE NFDERS IS ABOVE THE 90TH PERCENTILE.
- 100 AND 1000 HOUR FUELS ARE AT THE 10TH PERCENTILE AND APPROACHING HISTORIC MINIMUMS.
- ON 7/15 MANZANITA AND BITTERBRUSH LIVE FUEL MOISTURE WAS 120% NEARBY, WELL ABOVE CRITICAL OF 80%. SAGEBRUSH WAS CRITICAL AT 80%.
- THE FIRE AREA HAS NO RECORDED SIGNIFICANT FIRE HISTORY.

TOPOGRAPHY:

- MOST OF THE FIRE IS BETWEEN 4000-6000' ELEVATION.
- MOSTLY PLATEAUS WITH DEEP DRAINAGES. THE MAIN DRAINAGES ARE THE BUTTE CREEK/FOSTER DRAW, ASH CREEK AND WILLOW CREEK.

OUTPUTS

ALL BRANCHES

EXTENSIVE SCORCHED CANOPY IN ALL BRANCHES AND DEAD AND DOWNED HEAVY FUEL THAT WAS SMOLDERING COULD IGNITE. INDIVIDUAL TREE TORCHING, GROUP TORCHING AND SHORT CROWN RUNS ARE POSSIBLE AS FUEL CONDITIONS CONTINUE TO DETERIORATE. A SPOT FIRE OUTSIDE THE LINE IN GRASS AND BRUSH FUELS COULD RESULT IN RAPID SPREAD WITH UP TO 10' FLAMES, WHICH WOULD TRANSITION TO CROWN FIRE IF IN TIMBER.

AIR OPERATIONS:

SMALLER AREAS OF FIRE ACTIVITY LIMIT SMOKE GENERATION. VISIBILITY GOOD ALL DAY.

SAFETY

- WATCH FOR TREES ESPECIALLY JUNIPERS THAT ARE BURNED AT THE BASE. DESIGNATE "NO WORK ZONES" WITH FLAGGING AND COMMUNICATE THE SITUATION TO SURROUNDING FORCES.
- IF FIRE ACTIVITY INCREASES WATCH FOR DUST DEVILS AND FIRE WHIRLS INDICATING UNSTABLE AIR. FIRE COULD SPOT IN ALL DIRECTIONS IN THESE SITUATIONS
- UPSLOPE? DOWNWIND? HEAVY FUELS? EACH OF THESE SITUATIONS MEANS MORE HEAT IMPACT AND REQUIRES A LARGER SAFETY ZONE THAN 4 X FLAME HEIGHT.

ASSIGNMENT LIST (ICS 204 WF)

CONTROLLED UNCLASSIFIED
INFORMATION//BASIC

1. Incident Name: <p style="text-align: center;">GOLD</p>	2. Operational Period: Date From: 07/30/20 Date To: 07/31/20 Time From: 0700 Time To: 0700	3. Branch Division I B/D Page 1 of 1 Bravo/Delta
--	---	--

4. Operations Personnel: Operations Section Chief: Monty Smith, Jeremi Roesler (T) Branch Director: Larry Turman, Pat Benninghoven Division/Group Supervisor:	Night Ops: Joshua Bischof Branch Safety: Robert Ford Air Attack: Skye McGregor
---	---

5. Resources Assigned:		** Resources Below in Bold are 12 Hour **					
Resource Identifier	ALS	LWD	Leader	Personnel	Request #	Hours	Reporting Location
STC BTU 9210C			BROWNELL, TONY	21	E-152	0700-0700	DP 5
CRW2 C-19 OASIS			DODDS, LELAND	20	C-19	0700-1900	DP 5
CRW2 C-20 GRIZZLY			HINER, THEODORE	20	C-20	0700-1900	DP 5
CRW2 C-21 OREGON WOODS			ALFORD	20	C-21	0700-1900	DP 5
W/T PVT E-146 - HILLTOP			TRAUMILLER, JOHN	2	E-146	0700-0700	DP 5
W/T1 PVT E-288 - M. PETERS			JACKSON, ROBERT T	2	E-288	0700-0700	DP 5
W/T1 PVT E-291 - BENS			HALE, CARL	2	E-291	0700-0700	DP 5
W/T1 PVT E-295 - BENS			MCCARTY, GREG	2	E-295	0700-0700	DP 5

6. Work Assignments:

#6 Hold Fire within established Control Lines.
 #11 Mop up 500' interior to eliminate threat to the fire line.
 #13 Pull Hose Lays
 #15 Perform Tactical Patrol around structures for the potential of new starts.
 Mop up 500' around structures to prevent structure damage, and alleviate citizen concerns.

7. Special Instructions:

Avoid HWY 139 South of Modoc NF boundary sign. All resources using HWY 139 MUST stop for traffic control points.

8. Communications

Name	Ch	Function	Rx Freq	Rx Tone	Tx Freq	Tx Tone	Notes
NIFC C2	1	COMMAND	170.4500	123.0 (T2)	168.1000	123.0 (T2)	HAYDEN HILL
CDF T13	6	TACTICAL	151.3775	192.8 (T16)	151.3775	192.8 (T16)	BRANCH I
A/G CDF T24	14	TACTICAL	151.3325	192.8 (T16)	151.3325	192.8 (T16)	*** AIR TO GROUND ***
CALCORD	15	MEDICAL	156.0750	156.7 (T6)	156.0750	156.7 (T6)	
GUARD 27	16	EMERGENCY	168.6250		168.6250	110.9 (T1)	EMERGENCY USE ONLY

9. Prepared by: Name: David Newell	RESL(T)	Signature:
ICS 204	Date/Time: 7/29/2020 2200	Personnel Count: 89

ASSIGNMENT LIST (ICS 204 WF)

CONTROLLED UNCLASSIFIED
INFORMATION//BASIC

1. Incident Name: <p style="text-align: center; font-weight: bold;">GOLD</p>	2. Operational Period: Date From: 07/30/20 Date To: 07/31/20 Time From: 0700 Time To: 0700	3. Branch Division <p style="text-align: center; font-size: 2em; font-weight: bold;">I E/F</p>
4. Operations Personnel:		Page 1 of 1 Echo/Foxtrot

Operations Section Chief: Monty Smith, Jeremi Roesler (T) Branch Director: Larry Turman, Pat Benninghoven Division/Group Supervisor: Cole Periera	Night Ops: Joshua Bischof Branch Safety: Robert Ford Air Attack: Skye McGregor
--	---

5. Resources Assigned:	** Resources Below in Bold are 12 Hour **						
Resource Identifier	ALS	LWD	Leader	Personnel	Request #	Hours	Reporting Location
STC HUU 9121C			SILVERA, JT	18 +/-	E-260	0700-0700	DP 5
STC MVU 9330C			CLAYS, JOHN	18 +/-	E-259	0700-0700	DP 5
STG HUU 9126G		7/31	ALTAMIRANO, JOHN	33 +/-	C-25	0700-0700	DP 5
STG LNU 9142G			RYAN, KEVIN	33 +/-	C-40	0700-0700	DP 5
STG CZU 9174G			SOLIS III, ERNIE J	30	C-39	0700-0700	DP 5
STG MMU 9424 G			BARAJAS, EDUARDO	36	C-38	0700-0700	DP 5
STL LNU 9143L		8/2	MADOLE, BYRON	7	E-262	0700-0700	DP 5
W/T PVT E-26 - LUNTEY'S			LUNTEY, KEVIN	2	E-26	0700-0700	DP 5
W/T PVT E-144 - GOLDEN STATE			BALES, CODY	2	E-144	0700-0700	DP 5
W/T PVT E-147 - AMERICAN			REALI, VINCENT	2	E-147	0700-0700	DP 5
W/T PVT E-149 - OILAR			OILER, DANNY	2	E-149	0700-0700	DP 5
W/T PVT E-151 - DARRAH			KAUNDART, DAVE	2	E-151	0700-0700	DP 5
W/T1 PVT E-283 - MCLANE			MCLANE, BILLY	2	E-283	0700-0700	DP 5
FEMP PETERS	ALS		PETERS, MATT	1	O-132	0700-0700	DP 5
FEMT ZIMMERMAN		7/26	ZIMMERMAN, MICHAEL	1	O-227	0700-0700	DP 5

6. Work Assignments:

#6 Hold Fire within established Control Lines
 #7 Hold and Improve Control Lines to mitigate threat of fire escaping
 #11 Mop up 300' interior to eliminate threat to the fire line.
 #13 Pull Hose Lays.
 #14 Back Haul Excess Trash/Hose/Water to DP5 location.
 #19 Identify and document suppression repair needs to facilitate timely completion of repairs

7. Special Instructions:

Avoid HWY 139 South of Modoc NF boundary sign. All resources using HWY 139 MUST stop for traffic control points.

8. Communications

Name	Ch	Function	Rx Freq	Rx Tone	Tx Freq	Tx Tone	Notes
NIFC C2	1	COMMAND	170.4500	123.0 (T2)	168.1000	123.0 (T2)	HAYDEN HILL
CDF T27	7	TACTICAL	159.3075	192.8 (T16)	159.3075	192.8 (T16)	BRANCH I
A/G CDF T24	14	TACTICAL	151.3325	192.8 (T16)	151.3325	192.8 (T16)	*** AIR TO GROUND ***
CALCORD	15	MEDICAL	156.0750	156.7 (T6)	156.0750	156.7 (T6)	
GUARD 27	16	EMERGENCY	168.6250		168.6250	110.9 (T1)	EMERGENCY USE ONLY

9. Prepared by: Name: David Newell RESL(T)

Signature:

ICS 204 Date/Time: 7/29/2020 2200 Personnel Count: 189

ASSIGNMENT LIST (ICS 204 WF)

CONTROLLED UNCLASSIFIED
INFORMATION//BASIC

1. Incident Name: <p style="text-align: center; font-size: 1.2em;">GOLD</p>	2. Operational Period: Date From: 07/30/20 Date To: 07/31/20 Time From: 0700 Time To: 0700	3. Branch Division <p style="text-align: center; font-size: 1.5em;">III G</p> <p style="text-align: center;">Page 1 of 1 Golf</p>
--	---	---

4. Operations Personnel: Operations Section Chief: Monty Smith, Jeremi Roesler (T) Branch Director: Steven Ward Division/Group Supervisor: Todd Horton	Night Ops: Joshua Bischof Branch Safety: Robert Hill Air Attack: Skye McGregor
---	---

5. Resources Assigned:	** Resources Below in Bold are 12 Hour **						
Resource Identifier	ALS	LWD	Leader	Personnel	Request #	Hours	Reporting Location
STF XNE 4102F		8/3	BROWNING, THOMAS	16	E-51	0700-0700	DP 5
STG AEU 9273G		8/4	CHOLICO, ALEJANDRO	33 +/-	C-22	0700-0700	DP 5
CRW2 C-5 LMU CREW1A		8/2	WOODWARD, LUKE	9	C-5	0700-0700	DP 5
W/T PVT E-27 - ACKLEY			RAY ACKLEY	2	E-27	0700-0700	DP 5
W/T PVT E-142 - TRAFFIC		8/5	FORDE, BOB	2	E-142	0700-0700	DP 5
W/T PVT E-143 - FORD		8/3	FORD, GARY	2	E-143	0700-1900	DP 5
W/T1 PVT E-296 - TWO			BENSON, ALBERT	2	E-296	0700-0700	DP 5
W/T PVT E-353 - MARIAH			DOOLING, MIKE	2	E-353	0700-0700	DP 5
W/T PVT E-356 - DOWLING			DOWLING, BERNARD	2	E-356	0700-0700	DP 5
FALM O-267 - KNIGHT FIRE			DUROCHER, ANDREW	2	O-267	0700-1900	DP 5
HEQB SKROBECKY		7/27	SKROBECKY, JED	1	O-194	0700-0700	DP 5

6. Work Assignments:
 #5 Fall hazard trees, and trees that threaten control lines, to mitigate the threat of fire escaping, while maintaining personnel safety.
 #6 Hold Fire within established Control Lines.
 #11 Mop up 500' interior to eliminate threat to the fire line.
 #13 Pull Hose Lays where appropriate.
 #14 Back Haul Excess Trash/Hose/Water to DP 5.
 #19 Identify and document suppression repair needs to facilitate timely completion of repairs.

7. Special Instructions:
 Avoid HWY 139 South of Modoc NF boundary sign. All resources using HWY 139 MUST stop for traffic control points.

8. Communications

Name	Ch	Function	Rx Freq	Rx Tone	Tx Freq	Tx Tone	Notes
NIFC C8	2	COMMAND	169.5375	123.0 (T2)	164.7125	123.0 (T2)	LIKELY MTN
NIFC T6	10	TACTICAL	166.7750	123.0 (T2)	166.7750	123.0 (T2)	BRANCH III
A/G CDF T24	14	TACTICAL	151.3325	192.8 (T16)	151.3325	192.8 (T16)	*** AIR TO GROUND ***
CALCORD	15	MEDICAL	156.0750	156.7 (T6)	156.0750	156.7 (T6)	
GUARD 27	16	EMERGENCY	168.6250		168.6250	110.9 (T1)	EMERGENCY USE ONLY

9. Prepared by: Name: David Newell RESL(T)
 Signature:

ICS 204 Date/Time: 7/29/2020 2200 Personnel Count: 73

ASSIGNMENT LIST (ICS 204 WF)

CONTROLLED UNCLASSIFIED
INFORMATION//BASIC

1. Incident Name: <p style="text-align: center; font-size: 1.2em;">GOLD</p>	2. Operational Period: Date From: 07/30/20 Date To: 07/31/20 Time From: 0700 Time To: 0700	3. Branch <p style="text-align: center; font-size: 1.5em;">III</p>	Division <p style="text-align: center; font-size: 1.5em;">O</p>
4. Operations Personnel:		Page 1 of 1	Oscar

Operations Section Chief: Monty Smith, Jeremi Roesler (T)	Night Ops: Joshua Bischof
Branch Director: Steven Ward	Branch Safety: Robert Hill
Division/Group Supervisor: Dennis Lange, Brian Riley(T)	Air Attack: Skye McGregor

5. Resources Assigned:		** Resources Below in Bold are 12 Hour **					
Resource Identifier	ALS	LWD	Leader	Personnel	Request #	Hours	Reporting Location
STC NEU 9232C		8/4	HALE, NOLAN R	20	E-153	0700-0700	DP 5
STC TGU 9251C			TRULL, GABRIEL	18 +/-	E-332	0700-0700	DP 5
STC AEU 9270C			BATHAM, MICHAEL	18 +/-	E-261	0700-0700	DP 5
STC TCU 9442C		8/2	HUTCHINSON, THOMAS	20	E-133	0700-0700	DP 5
CRW2 C-15 WEST COAST			TORRES, LEONARDO	20	C-15	0700-1900	DP 5
CRW2 C-16 REFOREST			RINCON, JOSE	20	C-16	0700-1900	DP 5
CRW2 C-18 OASIS			DIETZ, WILLIAM	20	C-18	0700-1900	DP 5
CRW2 C-35 INBOUND			NETTLESHIP, WES	20	C-35	0700-1900	DP 5
W/T PVT E-23 - SHERER			RICHARDSON, DON	2	E-23	0700-0700	DP 5
W/T PVT E-25 - DUNLAP			DON DUNLAP	2	E-25	0700-0700	DP 5
W/T PVT E-150 - WATERBOYS			KEENE, ROBERT	2	E-150	0700-0700	DP 5
W/T1 PVT E-349 - ALGERINE			WARREN, DAVID	1	E-349	0700-0700	DP 5
W/T PVT E-350 - WATER DOGS			EPPERSON, JEFF	2	E-350	0700-0700	DP 5
FEMP SCHROTH	ALS	8/5	SCHROTH, ERIC	1	O-219	0700-0700	DP 5
FEMT HUDSON		8/5	HUDSON, ROYCE T	1	O-228	0700-0700	DP 5

6. Work Assignments:
 #5 Fall hazard trees, and trees that threaten control lines, to mitigate the threat of fire escaping, while maintaining personnel safety.
 #6 Hold Fire within established Control Lines.
 #7 Hold and Improve Control Lines to mitigate threat of fire escaping.
 #11 Mop up necessary depth interior to eliminate threat to the fire line, and to alleviate public concerns.
 #13 Pull Hose Lays.
 #14 Back Haul Excess Trash/Hose/Water to DP 5.

7. Special Instructions:
 Avoid HWY 139 South of Modoc NF boundary sign. All resources using HWY 139 MUST stop for traffic control points.

8. Communications

Name	Ch	Function	Rx Freq	Rx Tone	Tx Freq	Tx Tone	Notes
NIFC C8	2	COMMAND	169.5375	123.0 (T2)	164.7125	123.0 (T2)	LIKELY MTN
NIFC T1	11	TACTICAL	168.0500	123.0 (T2)	168.0500	123.0 (T2)	BRANCH III
A/G CDF T24	14	TACTICAL	151.3325	192.8 (T16)	151.3325	192.8 (T16)	*** AIR TO GROUND ***
CALCORD	15	MEDICAL	156.0750	156.7 (T6)	156.0750	156.7 (T6)	
GUARD 27	16	EMERGENCY	168.6250		168.6250	110.9 (T1)	EMERGENCY USE ONLY

9. Prepared by: Name: David Newell RESL(T)
 Signature:
ICS 204 Date/Time: 7/29/2020 2200 Personnel Count: 167

ASSIGNMENT LIST (ICS 204 WF)

CONTROLLED UNCLASSIFIED
INFORMATION//BASIC

1. Incident Name: <p style="text-align: center; font-weight: bold;">GOLD</p>	2. Operational Period: Date From: 07/30/20 Date To: 07/31/20 Time From: 0700 Time To: 0700	3. Branch Division <p style="text-align: center; font-size: 2em; font-weight: bold;">V R</p>
4. Operations Personnel:		Page 1 of 1 Romeo

Operations Section Chief: Monty Smith, Jeremi Roesler (T) Branch Director: Spencer Andreis Division/Group Supervisor: Robert Morales	Night Ops: Joshua Bischof Branch Safety: Air Attack: Skye McGregor
---	--

5. Resources Assigned:		** Resources Below in Bold are 12 Hour **						
Resource Identifier	ALS	LWD	Leader	Personnel	Request #	Hours	Reporting Location	
STC LNU 9147C		8/2	ROHRS, SCOTT	21	E-118	0700-0700	DP 58	
STC TGU 9250C			DARNALL, ETHAN	18 +/-	E-333	0700-0700	DP 58	
STG NEU 9234G			BERNARDINO, TONY	30	C-37	0700-0700	DP 58	
STG BDU 9357G		8/4	SABINO, ARNOLD	28	C-11	0700-0700	DP 58	
W/T1 PVT E-284 - NORTHSTAT			PIERCE, DICKSON	2	E-284	0700-0700	DP 58	
W/T1 PVT E-286 - TOUGH			MARK HAMILTON	2	E-286	0700-0700	DP 58	
W/T1 PVT E-292 - FORTNER			FORTNER, TRAVIS	2	E-292	0700-0700	DP 58	
W/T2 PVT E-347 - ALAN'S			WHARFF, ALAN	2	E-347	0700-0700	DP 58	
FALM PVT O-334 NORTH ZONE			BURG, GARY	2	O-334	0700-1900	DP 58	

6. Work Assignments:
 #11 Mop up 300' interior to eliminate threat to the fire line
 #14 Back Haul Excess Trash/Hose/Water to DP58 location.
 #19 Identify and document suppression repair needs to facilitate timely completion of repairs

7. Special Instructions:
 Avoid HWY 139 South of Modoc NF boundary sign. All resources using HWY 139 MUST stop for traffic control points.

8. Communications							
Name	Ch	Function	Rx Freq	Rx Tone	Tx Freq	Tx Tone	Notes
NIFC C24	5	COMMAND	170.0500	123.0 (T2)	163.1500	123.0 (T2)	COYOTE PEAK
CDF T26	12	TACTICAL	159.2925	192.8 (T16)	159.2925	192.8 (T16)	BRANCH V
A/G CDF T24	14	TACTICAL	151.3325	192.8 (T16)	151.3325	192.8 (T16)	*** AIR TO GROUND ***
CALCORD	15	MEDICAL	156.0750	156.7 (T6)	156.0750	156.7 (T6)	
GUARD 27	16	EMERGENCY	168.6250		168.6250	110.9 (T1)	EMERGENCY USE ONLY

9. Prepared by: Name: David Newell RESL(T)
 Signature:

ICS 204 Date/Time: 7/29/2020 2200 Personnel Count: 107

ASSIGNMENT LIST (ICS 204 WF)

CONTROLLED UNCLASSIFIED
INFORMATION//BASIC

1. Incident Name:	2. Operational Period:	3. Branch	Division
GOLD	Date From: 07/30/20 Date To: 07/31/20 Time From: 0700 Time To: 0700	V	W/T
4. Operations Personnel:		Page 1 of 1 Whiskey/Tango	

Operations Section Chief: Monty Smith, Jeremi Roesler (T)	Night Ops: Joshua Bischof
Branch Director: Spencer Andreis	Branch Safety:
Division/Group Supervisor: Matthew Barnes	Air Attack: Skye McGregor

5. Resources Assigned:		** Resources Below in Bold are 12 Hour **					
Resource Identifier	ALS	LWD	Leader	Personnel	Request #	Hours	Reporting Location
STC XMY 2175C	ALS		MCCOUN, DOUG	20	E-122	0700-1900	DP 1
STC XCA 4050C		7/30	DOWNES, MIKE	16	E-84	0700-1900	DP 1
ENG3 LMU 2264		8/4	BEACHAM, NICKOLAS	3	E-31	0700-0700	DP 1
ENG3 LMU 2274		8/2	BILLINGS, ROY	4	E-79	0700-0700	DP 1
ENG3 LMU 2293			DENNEL, MATHEW	4	E-32	0700-0700	DP 1
ENG3 LMU 2294		7/30	HUGHES, JACOB	4	E-34	0700-0700	DP 1
STG LMU 9222G			ETTER, KEITH	32	C-46	0700-0700	DP 1
W/T PVT E-22 - OILAR			HAWKS, TODD	2	E-22	0700-0700	DP 1
W/T1 PVT E-294 - GENE			HOWARD, TRYSTAN	2	E-294	0700-0700	DP 1
W/T2 PVT E-354 - WELLS			WELLS, JEFF	2	E-354	0700-0700	DP 1
W/T2 PVT E-367 - FIRE			CURRY, KEITH	2	E-367	0700-0700	DP 1

6. Work Assignments:
 #11 Mop up 300' interior to eliminate threat to the fire line
 #13 Pull Hose Lays.
 #14 Back Haul Excess Trash/Hose/Water to DP DP1 location

7. Special Instructions:
 Avoid HWY 139 South of Modoc NF boundary sign. All resources using HWY 139 MUST stop for traffic control points.

8. Communications

Name	Ch	Function	Rx Freq	Rx Tone	Tx Freq	Tx Tone	Notes
NIFC C2	1	COMMAND	170.4500	123.0 (T2)	168.1000	123.0 (T2)	HAYDEN HILL
NIFC T5	13	TACTICAL	166.7250	123.0 (T2)	166.7250	123.0 (T2)	BRANCH V
A/G CDF T24	14	TACTICAL	151.3325	192.8 (T16)	151.3325	192.8 (T16)	*** AIR TO GROUND ***
CALCORD	15	MEDICAL	156.0750	156.7 (T6)	156.0750	156.7 (T6)	
GUARD 27	16	EMERGENCY	168.6250		168.6250	110.9 (T1)	EMERGENCY USE ONLY

9. Prepared by: Name: David Newell RESL(T)

Signature:

ICS 204 Date/Time: 7/29/2020 2200 Personnel Count: 91

ASSIGNMENT LIST (ICS 204 WF)

CONTROLLED UNCLASSIFIED
INFORMATION//BASIC

1. Incident Name: <p style="text-align: center; font-weight: bold;">GOLD</p>	2. Operational Period: Date From: 07/30/20 Date To: 07/31/20 Time From: 0700 Time To: 0700	3. Branch Division Contingency Cal Pines Cont.
--	---	---

4. Operations Personnel: Operations Section Chief: Monty Smith, Jeremi Roesler (T) Branch Director: Division/Group Supervisor: Jaime Hidalgo (T)	Night Ops: Joshua Bischof Branch Safety: Air Attack: Skye McGregor
--	--

5. Resources Assigned:	** Resources Below in Bold are 12 Hour **						
Resource Identifier	ALS	LWD	Leader	Personnel	Request #	Hours	Reporting Location
STC XSO 2350C			PRESCOTT, JASON	20	E-134	0700-1900	
STF XKI 5050F		8/3	JONES, BRANDON	18 +/-	E-50	0700-1900	
DOZ PVT E-9 - THOMPSON			SAM THOMPSON	1	E-9	0700-1900	
DOZ PVT E-18 - OILAR			WHITE, JAMES	1	E-18	0700-1900	
DOZ PVT E-19 - BUSHEY			WARD, LEE	1	E-19	0700-1900	
DOZ PVT E-20 - SHERER			SHERER, JIM	1	E-20	0700-1900	
DOZ PVT E-271 - ACT			EILTS, JON	1	E-271	0700-1900	
DOZ PVT E-272 - SCHREDER			HALL, CORY	1	E-272	0700-1900	
DOZ PVT E-274 - MATANDY			HARKNESS, MATT	1	E-274	0700-1900	
DOZ PVT E-277 - ERIC			SPRATT, ERIC	1	E-277	0700-1900	
DOZ PVT E-279 - SALINAS			RAMIREZ, AARON	1	E-279	0700-1900	
DOZ PVT E-281 - PRODUMP			MUCCULIF, TODD	1	E-281	0700-1900	
DOZ PVT E-343 - MILLER			MILLER, HAROLD	1	E-343	0700-1900	
W/T OES 31			BOWERS, JOE	1	E-87	0700-1900	
W/T PVT E-24 - INGRAHAM			INGRAHAM, BRIAN	1	E-24	0700-1900	
W/T1 PVT E-285 - DUDLEYS			STUGELMEYER, JOHN	1	E-285	0700-1900	
W/T1 PVT E-290 - T & S DVBE			JONES, ROBERT	1	E-290	0700-1900	
EXC PVT E-222 - COLEMAN			COLEMAN, JOE	1	E-222	0700-1900	

6. Work Assignments:
Develop and prepare to implement a structure defense plan.
Construct contingency lines West of the Cal Pines subdivision.

7. Special Instructions:
Avoid HWY 139 South of Modoc NF boundary sign. All resources using HWY 139 MUST stop for traffic control points.
All resources 12-hour.

8. Communications							
Name	Ch	Function	Rx Freq	Rx Tone	Tx Freq	Tx Tone	Notes
NIFC C9	3	COMMAND	170.0125	123.0 (T2)	165.2500	123.0 (T2)	MANZANITA LO
CDF T28	8	TACTICAL	151.1825	192.8 (T16)	151.1825	192.8 (T16)	CONTINGENCY BRANCH
A/G CDF T24	14	TACTICAL	151.3325	192.8 (T16)	151.3325	192.8 (T16)	*** AIR TO GROUND ***
CALCORD	15	MEDICAL	156.0750	156.7 (T6)	156.0750	156.7 (T6)	
GUARD 27	16	EMERGENCY	168.6250		168.6250	110.9 (T1)	EMERGENCY USE ONLY

9. Prepared by: Name: David Newell RESL(T)
Signature: 

ICS 204 Date/Time: 7/29/2020 2200 Personnel Count: 54

NIMS IAP

CONTROLLED UNCLASSIFIED INFORMATION//BASIC

ASSIGNMENT LIST (ICS 204 WF)

CONTROLLED UNCLASSIFIED
INFORMATION//BASIC

1. Incident Name: <p style="text-align: center; font-weight: bold;">GOLD</p>	2. Operational Period: Date From: 07/30/20 Date To: 07/31/20 Time From: 0700 Time To: 0700	3. Branch Division Contingency Cal Pines Cont.
--	---	--

4. Operations Personnel: Operations Section Chief: Monty Smith, Jeremi Roesler (T) Branch Director: Division/Group Supervisor: Jaime Hidalgo (T)		Night Ops: Joshua Bischof Branch Safety: Air Attack: Skye McGregor
--	--	--

5. Resources Assigned:		** Resources Below in Bold are 12 Hour **					
Resource Identifier	ALS	LWD	Leader	Personnel	Request #	Hours	Reporting Location
MAS PVT E-218 - BUCK TRKNG			LASSEN, STEVE	1	E-218	0700-1900	CALFIRE Cal Pines Stn
MAS PVT E-387 - SUNRISE			WILLIAMS, BRANDON	1	E-387	0700-1900	CALFIRE Cal Pines Stn
FEL PVT E-252 - WARNER			ALLEN, BOBBY	1 +/-	E-252	0700-1900	CALFIRE Cal Pines Stn
SKD PVT E-302 - WARNER			SERAL, JOHN	1 +/-	E-302	0700-1900	CALFIRE Cal Pines Stn
SKG PVT E-256 - BUCK			KENMORE, KELLY	1	E-256	0700-1900	CALFIRE Cal Pines Stn
HEQB WILL			WILL, GARY C	1	O-145	0700-1900	CALFIRE Cal Pines Stn
HEQB (T) GIBSON		7/31	GIBSON, CODY	1	O-198	0700-1900	CALFIRE Cal Pines Stn
HEQB URRUTIA			URRUTIA, FELIX	1	O-372	0700-1900	CALFIRE Cal Pines Stn
HEQB (T) TUCKER		8/3	TUCKER, AARON	1	O-258	0700-1900	CALFIRE Cal Pines Stn
HEQB PETERSEN			PETERSEN, ROGER	1	O-380	0700-1900	CALFIRE Cal Pines Stn
HEQB PRIDEMORE		7/31	PRIDEMORE, TRAVIS J	1	O-196	0700-1900	CALFIRE Cal Pines Stn
FORS FAZIO		8/2	FAZIO, JOSEPH	1	O-82	0700-1900	CALFIRE Cal Pines Stn
RESP FELLER			FELLER, PETE L	1	O-373	0700-1900	CALFIRE Cal Pines Stn
FOBS LONGCRIER		8/5	LONGCRIER, JEFFERY	1	O-256	0700-1900	CALFIRE Cal Pines Stn
FORS SCHROEDER		8/1	SCHROEDER, DON H	1	O-273	0700-1900	CALFIRE Cal Pines Stn

6. Work Assignments:
Develop and prepare to implement a structure defense plan.
Construct contingency lines West of the Cal Pines subdivision.

7. Special Instructions:
Avoid HWY 139 South of Modoc NF boundary sign. All resources using HWY 139 MUST stop for traffic control points.
All resources 12-hour.

8. Communications							
Name	Ch	Function	Rx Freq	Rx Tone	Tx Freq	Tx Tone	Notes
NIFC C9	3	COMMAND	170.0125	123.0 (T2)	165.2500	123.0 (T2)	MANZANITA LO
CDF T28	8	TACTICAL	151.1825	192.8 (T16)	151.1825	192.8 (T16)	CONTINGENCY BRANCH
A/G CDF T24	14	TACTICAL	151.3325	192.8 (T16)	151.3325	192.8 (T16)	*** AIR TO GROUND ***
CALCORD	15	MEDICAL	156.0750	156.7 (T6)	156.0750	156.7 (T6)	
GUARD 27	16	EMERGENCY	168.6250		168.6250	110.9 (T1)	EMERGENCY USE ONLY

9. Prepared by: Name:	David Newell	RESL(T)	Signature:
ICS 204	Date/Time: 7/29/2020	2200	Personnel Count: 15

ASSIGNMENT LIST (ICS 204 WF)

CONTROLLED UNCLASSIFIED
INFORMATION//BASIC

1. Incident Name: <p style="text-align: center;">GOLD</p>	2. Operational Period: Date From: 07/30/20 Date To: 07/31/20 Time From: 0700 Time To: 0700	3. Branch Staging <p style="text-align: center; font-weight: bold;">Bieber Staging</p>
---	---	---

Page 1 of 1

4. Operations Personnel:	
Operations Section Chief: Monty Smith, Jeremi Roesler (T) Branch Director: Division/Group Supervisor: Chris Atkins	Night Ops: Joshua Bischof Branch Safety: Air Attack: Skye McGregor

5. Resources Assigned:	** Resources Below in Bold are 12 Hour **						
Resource Identifier	ALS	LWD	Leader	Personnel	Request #	Hours	Reporting Location
EXC PVT E-386 - CLAYTON				1	E-386	0700-1900	

6. Work Assignments:
Maintain 3 minute response time.

7. Special Instructions:
Avoid HWY 139 South of Modoc NF boundary sign. All resources using HWY 139 MUST stop for traffic control points.

8. Communications

Name	Ch	Function	Rx Freq	Rx Tone	Tx Freq	Tx Tone	Notes
NIFC C2	1	COMMAND	170.4500	123.0 (T2)	168.1000	123.0 (T2)	HAYDEN HILL
A/G CDF T24	14	TACTICAL	151.3325	192.8 (T16)	151.3325	192.8 (T16)	*** AIR TO GROUND ***
CALCORD	15	MEDICAL	156.0750	156.7 (T6)	156.0750	156.7 (T6)	
GUARD 27	16	EMERGENCY	168.6250		168.6250	110.9 (T1)	EMERGENCY USE ONLY

9. Prepared by: Name: David Newell RESL(T)
Signature:
ICS 204
Date/Time: 7/29/2020 2200
Personnel Count: **1**

ASSIGNMENT LIST (ICS 204 WF)

CONTROLLED UNCLASSIFIED
INFORMATION//BASIC

1. Incident Name: <p style="text-align: center; font-weight: bold;">GOLD</p>	2. Operational Period: Date From: 07/30/20 Date To: 07/31/20 Time From: 0700 Time To: 0700	3. Branch Staging <p style="text-align: center; font-weight: bold;">Supp Repair</p>
4. Operations Personnel:		Page 1 of 3

Operations Section Chief: Monty Smith, Jeremi Roesler (T) Branch Director: Division/Group Supervisor: Guy Anderson, Shanna Kuempel (T)	Night Ops: Joshua Bischof Branch Safety: Air Attack: Skye McGregor
--	--

5. Resources Assigned:	** Resources Below in Bold are 12 Hour **						
Resource Identifier	ALS	LWD	Leader	Personnel	Request #	Hours	Reporting Location
CRW2 C-14 REFOREST		8/5	RINCON, JOSE	20	C-14	0700-1900	
CRW2 C-17 OASIS		8/5	FINCH, DEREK	20	C-17	0700-1900	
CRW2 C-34 INBOUND			KIGER, CHRISTOPHER	20	C-34	0700-1900	
DOZ PVT E-165 - ALGERINE			BURNS, TIM	2	E-165	0700-1900	
DOZ PVT E-166 - NORTHSTATE			NICKELL, CORY	2	E-166	0700-1900	
DOZ PVT E-167 - NORTHSTATE		8/4	RODRIGUE, DANA	2	E-167	0700-1900	
DOZ PVT E-176 - NORTHSTATE		8/4	WYLIE, MITCHELL		E-176	0700-1900	
DOZ PVT E-273 - BACKWOODS			JUNGWIRTH, JERRY	2	E-273	0700-1900	
DOZ PVT E-275 - COTTON			MAZZOTTA, ZAC	2	E-275	0700-1900	
DOZ PVT E-278			NEWSOM, RANDY	2	E-278	0700-1900	
DOZ PVT E-280 - LEPAGE			GREER, MIKE	2	E-280	0700-1900	
DOZ PVT E-282 - M. PETERS			WELDON, CODY	2	E-282	0700-1900	
W/T PVT E-145 - HILLTOP		8/4	TRAUMILLER, JUSTIN	2	E-145	0700-1900	
W/T1 PVT E-348 - BOB			FOURBY, SHAWN	2	E-348	0700-1900	
W/T PVT E-351 - WATER DOGS			WORSHAM, BRANDON	2	E-351	0700-1900	
W/T PVT E-352 - USC SUPPLY			MOULTRIE, JAMES	2	E-352	0700-1900	
W/T2 PVT E-355 - COTTON			HANSCOM, NIEL	2	E-355	0700-1900	
EXC PVT E-219 - NORTHSTATE			CARSON, METZ	1	E-219	0700-1900	

6. Work Assignments:
 Identify and document suppression repair needs.
 Create and implement suppression repair plan.

7. Special Instructions:
 Avoid HWY 139 South of Modoc NF boundary sign. All resources using HWY 139 MUST stop for traffic control points.
 All resources 12-hour.

8. Communications

Name	Ch	Function	Rx Freq	Rx Tone	Tx Freq	Tx Tone	Notes
NIFC C2	1	COMMAND	170.4500	123.0 (T2)	168.1000	123.0 (T2)	HAYDEN HILL
CDF T32	13	TACTICAL	151.2425	192.8 (T16)	151.2425	192.8 (T16)	SUPP REPAIR
A/G CDF T24	14	TACTICAL	151.3325	192.8 (T16)	151.3325	192.8 (T16)	*** AIR TO GROUND ***
CALCORD	15	MEDICAL	156.0750	156.7 (T6)	156.0750	156.7 (T6)	
GUARD 27	16	EMERGENCY	168.6250		168.6250	110.9 (T1)	EMERGENCY USE ONLY

9. Prepared by: Name: David Newell RESL(T)
 Signature:

ICS 204 Date/Time: 7/29/2020 2200 Personnel Count: 87

CONTROLLED UNCLASSIFIED INFORMATION//BASIC

ASSIGNMENT LIST (ICS 204 WF)

CONTROLLED UNCLASSIFIED
INFORMATION//BASIC

1. Incident Name: <p style="text-align: center; font-weight: bold;">GOLD</p>	2. Operational Period: Date From: 07/30/20 Date To: 07/31/20 Time From: 0700 Time To: 0700	3. Branch Staging <p style="text-align: center; font-weight: bold;">Supp Repair</p>
4. Operations Personnel:		Page 2 of 3

Operations Section Chief: Monty Smith, Jeremi Roesler (T) Branch Director: Division/Group Supervisor: Guy Anderson, Shanna Kuempel (T)	Night Ops: Joshua Bischof Branch Safety: Air Attack: Skye McGregor
--	--

5. Resources Assigned:	** Resources Below in Bold are 12 Hour **						
Resource Identifier	ALS	LWD	Leader	Personnel	Request #	Hours	Reporting Location
EXC PVT E-220 - HOLT LOGGING			HARDIG, PAUL	1	E-220	0700-1900	ICP
EXC PVT E-221 - PETERS INC			PETERS, MIKE	1	E-221	0700-1900	ICP
EXC PVT E-379 - RMB			HELM, JOSH	1	E-379	0700-1900	ICP
EXC PVT E-380			FERRI, LEIF	1	E-380	0700-1900	ICP
GDR PVT E-224 - LAMB			LAMB, CODY	1	E-224	0700-1900	ICP
GDR PVT E-225 - M. PETERS			PETERS, MIKE	1	E-225	0700-1900	ICP
MAS PVT E-223 - WURLITZER			NEURKOVER, TOM	1	E-223	0700-1900	ICP
MAS PVT E-374 - T & S DVBE			LANDALE, JASON	1	E-374	0700-1900	ICP
MAS PVT E-376 - HERTZIG			HERTZIG, JOHN	1	E-376	0700-1900	ICP
MAS PVT E-381 CLAYTON			CLAYTON, GRAHAM	1	E-381	0700-1900	ICP
FALM O-265 - LONE PINE			RANDY	2	O-265	0700-1900	ICP
FALM PVT O-266 - MOD SAW			STACHER, NICK	2	O-266	0700-1900	ICP
FALM PVT O-331 TREE WORX			MURRAY, SEAN	2	O-331	0700-1900	ICP
FALM PVT O-332 BUCK MASON			MASON, JEREMY	2	O-332	0700-1900	ICP
HEQB SIMPSON			SIMPSON, EDWIN	1	O-390	0700-1900	ICP
HEQB(T) VAN GOIDSENHOVEN			VAN GOIDSENHOVEN, D	1	O-387	0700-1900	ICP
HEQB SHERFY			SHERFY, CHRISTIAN	1	O-315	0700-1900	ICP
HEQB(T) BENNER			BENNER, NATHAN	1	O-314	0700-1900	ICP

6. Work Assignments:
Identify and document suppression repair needs.
Create and implement suppression repair plan.

7. Special Instructions:
Avoid HWY 139 South of Modoc NF boundary sign. All resources using HWY 139 MUST stop for traffic control points.
All resources 12-hour.

8. Communications

Name	Ch	Function	Rx Freq	Rx Tone	Tx Freq	Tx Tone	Notes
NIFC C2	1	COMMAND	170.4500	123.0 (T2)	168.1000	123.0 (T2)	HAYDEN HILL
CDF T32	13	TACTICAL	151.2425	192.8 (T16)	151.2425	192.8 (T16)	SUPP REPAIR
A/G CDF T24	14	TACTICAL	151.3325	192.8 (T16)	151.3325	192.8 (T16)	*** AIR TO GROUND ***
CALCORD	15	MEDICAL	156.0750	156.7 (T6)	156.0750	156.7 (T6)	
GUARD 27	16	EMERGENCY	168.6250		168.6250	110.9 (T1)	EMERGENCY USE ONLY

9. Prepared by: Name:	David Newell	RESL(T)	Signature:
ICS 204	Date/Time: 7/29/2020 2200	Personnel Count: 22	

ASSIGNMENT LIST (ICS 204 WF)

CONTROLLED UNCLASSIFIED
INFORMATION//BASIC

1. Incident Name: <p style="text-align: center; font-weight: bold;">GOLD</p>	2. Operational Period: Date From: 07/30/20 Date To: 07/31/20 Time From: 0700 Time To: 0700	3. Branch Staging <p style="text-align: center; font-weight: bold; font-size: 1.2em;">Supp Repair</p>
--	---	--

Page 3 of 3

4. Operations Personnel: Operations Section Chief: Monty Smith, Jeremi Roesler (T) Branch Director: Division/Group Supervisor: Guy Anderson, Shanna Kuempel (T)		Night Ops: Joshua Bischof Branch Safety: Air Attack: Skye McGregor
---	--	--

5. Resources Assigned:		** Resources Below in Bold are 12 Hour **					
Resource Identifier	ALS	LWD	Leader	Personnel	Request #	Hours	Reporting Location
HEQB(T) WIMMER			WIMMER, RYAN	1	O-392	0700-1900	ICP
FSRS TITUS			TITUS, LUCAS	1	O-388	0700-1900	ICP
FSRS(T) MATHEWSON			MATHEWSON, ROSS	1	O-389	0700-1900	ICP
FSRS(T) MCNICHOLAS			MCNICHOLAS, MICHAEL	1	O-391	0700-1900	ICP
FOBS(T) MCBRIDE		8/5	MCBRIDE, IAN	1	O-83	0700-1900	ICP
FOBS WITLOCK						0700-1900	ICP

6. Work Assignments:
Identify and document suppression repair needs.
Create and implement suppression repair plan.

7. Special Instructions:
Avoid HWY 139 South of Modoc NF boundary sign. All resources using HWY 139 MUST stop for traffic control points.
All resources 12-hour.

8. Communications							
Name	Ch	Function	Rx Freq	Rx Tone	Tx Freq	Tx Tone	Notes
NIFC C2	1	COMMAND	170.4500	123.0 (T2)	168.1000	123.0 (T2)	HAYDEN HILL
CDF T32	13	TACTICAL	151.2425	192.8 (T16)	151.2425	192.8 (T16)	SUPP REPAIR
A/G CDF T24	14	TACTICAL	151.3325	192.8 (T16)	151.3325	192.8 (T16)	*** AIR TO GROUND ***
CALCORD	15	MEDICAL	156.0750	156.7 (T6)	156.0750	156.7 (T6)	
GUARD 27	16	EMERGENCY	168.6250		168.6250	110.9 (T1)	EMERGENCY USE ONLY

9. Prepared by: Name: David Newell RESL(T) Signature:

ICS 204 Date/Time: 7/29/2020 2200 Personnel Count: 5



SAFETY MESSAGE

GOLD



20-CA-LMU-0003917 JULY 30, 2020 0700-0700

DANGERS OF BURNING TIME

Extended Burning Creates Life and Injury Hazards

Watch Out

- Avoid trees that have been burning for long periods of time
- Power poles within and around the fire perimeter

Mitigation

- Flag these trees and communicate the dangers of fall and snags
- Stump holes are difficult to identify, use your hand tool to feel for ground depth

HEAVY EQUIPMENT

Suppression Repair has been Assigned to Multiple Divisions

Watch Out

- Operators may have limited visibility, maintain appropriate working distance
- Steel tracks can cause sparks when they come in contact with rocks and boulders

Mitigation

- Make sure that you have eye contact with operator before you approach
- Have an engine or watertender work behind suppression repair equipment

DEMOB

PREVENT ACCIDENTS AND INCIDENTS DURING DEMOBILIZATION

Watch Out

- Vehicles will be moving in tight areas around Ground Support personnel
- There will be an increase in backing and maneuvering of vehicles in tight spots

Mitigation

- Provide back-up and spotter personnel - more than one may be required
- Drive cautiously / courteous in and around ICP and demob pedestrian traffic

COVID-19

REDUCE THE EXPOSURE AND SPREAD BY:

- Wearing a face covering when you're less than 6 feet from others
- Washing your hands frequently, for at least 20-seconds at a time
- ONLY 3 people seated and spaced per table in the dining area

215a



BILL MURPHY *apm*

CAL FIRE IMT 4 SAFETY

S
A
F
E
T
Y

S
A
F
E
T
Y

S
A
F
E
T
Y

E
V
E
R
Y
O
N
E
S
R
E
S
P
O
N
S
I
B
I
L
I
T
Y

REMAIN FIRE FOCUSED BUT COVID AWARE

AIR OPERATIONS SUMMARY ICS-220

Incident Name and Incident Number	Sunrise	Startup	Cutoff	Sunset	Time Prepared	Date Prepared	Prepared By																																																																																				
Gold Fire, CA- ML-003917	5:59	7:00	19:53	20:23	20:00	Wednesday July 29th	Tim Perkins																																																																																				
General Remarks, Safety Notes, Hazards, Air Operations Special Equipment, etc. TRACK ALL DIPSITE LOCATIONS / NUMBER OF DIPS / GALLONS TAKEN. TRACK ALL DROP LOCATIONS / NUMBER OF DROPS / GALLONS DROPPED. ALL GPS DATA TO BE COLLECTED IN DEGREES, MINUTES, DECIMAL MINUTES, FORMAT. AVOID Aerial Application of Retardant / Foam / Agent within 300' of Waterways, Bodies of Water, etc. If Retardant / Foam / Agent is Dropped Within These Areas Immediately Notify the AOB and Provide the Following Information: Lat / Long, Estimated Number of Gallons and a Map Detailing The Area.				Helibase Information Name: Fall River Latitude: 41° 10.40' Longitude: 121° 25.59' Request # A-29 Radius: Polygon NM Altitude: 10000' MSL Lat: 41.06.45 Long: 120.55.04 Centerpoint: 127.375 NOTAMS: Frequency: 127.375 (use page 2 if needed)																																																																																							
<table border="1"> <thead> <tr> <th>Frequencies</th> <th>RX</th> <th>Tone</th> <th>TX</th> <th>AM / FM</th> <th>Name</th> <th>Position</th> <th>Name</th> <th>Phone</th> </tr> </thead> <tbody> <tr> <td>AIR TACTICS</td> <td>169.2000</td> <td></td> <td>169.2000</td> <td>FM</td> <td>Greg Bradshaw</td> <td>AOBD</td> <td>Greg Bradshaw</td> <td>949.887.2841</td> </tr> <tr> <td>AIR / AIR Rotor Victor</td> <td>127.3750</td> <td></td> <td>127.3750</td> <td>AM</td> <td>Tim Perkins</td> <td>AOBD-T</td> <td>Tim Perkins</td> <td>949.702.3868</td> </tr> <tr> <td>AIR / AIR Briefing Victor</td> <td>133.2250</td> <td></td> <td></td> <td>AM</td> <td>Stephanie Cardwell</td> <td>HEBM</td> <td>Stephanie Cardwell</td> <td>707.815.6057</td> </tr> <tr> <td>AIR / GROUND - Tactical</td> <td>151.3325</td> <td>192.8</td> <td>151.3325</td> <td>FM</td> <td>Peter York</td> <td>ASGS-T</td> <td>Peter York</td> <td>530.386.2147</td> </tr> <tr> <td>COMMAND</td> <td>170.4500</td> <td>123.0</td> <td>168.1000</td> <td>FM</td> <td>Jerry Messing</td> <td>HLCO</td> <td>Jerry Messing</td> <td>541.306.0907</td> </tr> <tr> <td>TOLC</td> <td>None</td> <td></td> <td></td> <td>AM</td> <td>Travis Will</td> <td>HLCO</td> <td>Travis Will</td> <td>208.841.1898</td> </tr> <tr> <td>DECK</td> <td>163.1000</td> <td></td> <td>163.1000</td> <td>FM</td> <td></td> <td></td> <td></td> <td></td> </tr> <tr> <td>CALCORD - MEDICAL</td> <td>156.0750</td> <td>156.7 (6)</td> <td>156.0750</td> <td>FM</td> <td></td> <td></td> <td></td> <td></td> </tr> <tr> <td>AIRGAURD - Emergency Only</td> <td>168.6250</td> <td>156.7 (6)</td> <td>168.6250</td> <td>FM</td> <td></td> <td></td> <td></td> <td></td> </tr> </tbody> </table>	Frequencies	RX	Tone	TX	AM / FM	Name	Position	Name	Phone	AIR TACTICS	169.2000		169.2000	FM	Greg Bradshaw	AOBD	Greg Bradshaw	949.887.2841	AIR / AIR Rotor Victor	127.3750		127.3750	AM	Tim Perkins	AOBD-T	Tim Perkins	949.702.3868	AIR / AIR Briefing Victor	133.2250			AM	Stephanie Cardwell	HEBM	Stephanie Cardwell	707.815.6057	AIR / GROUND - Tactical	151.3325	192.8	151.3325	FM	Peter York	ASGS-T	Peter York	530.386.2147	COMMAND	170.4500	123.0	168.1000	FM	Jerry Messing	HLCO	Jerry Messing	541.306.0907	TOLC	None			AM	Travis Will	HLCO	Travis Will	208.841.1898	DECK	163.1000		163.1000	FM					CALCORD - MEDICAL	156.0750	156.7 (6)	156.0750	FM					AIRGAURD - Emergency Only	168.6250	156.7 (6)	168.6250	FM					
Frequencies	RX	Tone	TX	AM / FM	Name	Position	Name	Phone																																																																																			
AIR TACTICS	169.2000		169.2000	FM	Greg Bradshaw	AOBD	Greg Bradshaw	949.887.2841																																																																																			
AIR / AIR Rotor Victor	127.3750		127.3750	AM	Tim Perkins	AOBD-T	Tim Perkins	949.702.3868																																																																																			
AIR / AIR Briefing Victor	133.2250			AM	Stephanie Cardwell	HEBM	Stephanie Cardwell	707.815.6057																																																																																			
AIR / GROUND - Tactical	151.3325	192.8	151.3325	FM	Peter York	ASGS-T	Peter York	530.386.2147																																																																																			
COMMAND	170.4500	123.0	168.1000	FM	Jerry Messing	HLCO	Jerry Messing	541.306.0907																																																																																			
TOLC	None			AM	Travis Will	HLCO	Travis Will	208.841.1898																																																																																			
DECK	163.1000		163.1000	FM																																																																																							
CALCORD - MEDICAL	156.0750	156.7 (6)	156.0750	FM																																																																																							
AIRGAURD - Emergency Only	168.6250	156.7 (6)	168.6250	FM																																																																																							
<p style="text-align: center;">HELICOPTERS</p> <table border="1"> <thead> <tr> <th>FAA #</th> <th>Type</th> <th>Make/Model</th> <th>Helibase</th> <th>Avail</th> <th>Start</th> <th>Remarks / A - #</th> <th>Start</th> <th>Avail</th> <th>Helibase</th> <th>Avail</th> <th>Remarks / A - #</th> </tr> </thead> <tbody> <tr> <td>5PJ</td> <td>1</td> <td>UH60 Blackhawk</td> <td>Fall River</td> <td>7:00</td> <td>8:00</td> <td>Long Line / A-10</td> <td>8:00</td> <td>7:00</td> <td>Fall River</td> <td>7:00</td> <td>HLCO / A-54</td> </tr> <tr> <td>2KA</td> <td>1</td> <td>Kmax</td> <td>Fall River</td> <td>7:00</td> <td>8:00</td> <td>Long Line / A-11</td> <td>8:00</td> <td>7:00</td> <td>Fall River</td> <td>7:00</td> <td>Recon / A-72</td> </tr> <tr> <td>5BH</td> <td>1</td> <td>UH60 Blackhawk</td> <td>Fall River</td> <td>7:00</td> <td>8:00</td> <td>Long Line / A-66</td> <td>8:00</td> <td>7:00</td> <td>Fall River</td> <td>7:00</td> <td>HLCO / A-206</td> </tr> <tr> <td>4PG</td> <td>1</td> <td>UH60 Blackhawk</td> <td>Fall River</td> <td>8:00</td> <td>9:00</td> <td>Long Line / A-127</td> <td>9:00</td> <td>8:00</td> <td>Fall River</td> <td>7:00</td> <td>HLCO / A-68</td> </tr> <tr> <td>0CU</td> <td>1</td> <td>Chinook CH47</td> <td>Fall River</td> <td>8:00</td> <td>9:00</td> <td>Fixed Tank / A-67</td> <td>9:00</td> <td></td> <td></td> <td></td> <td></td> </tr> <tr> <td>7BH</td> <td>1</td> <td>UH60 Blackhawk</td> <td>Fall River</td> <td>8:00</td> <td>9:00</td> <td>Long Line / A-119</td> <td>9:00</td> <td></td> <td></td> <td></td> <td></td> </tr> </tbody> </table>								FAA #	Type	Make/Model	Helibase	Avail	Start	Remarks / A - #	Start	Avail	Helibase	Avail	Remarks / A - #	5PJ	1	UH60 Blackhawk	Fall River	7:00	8:00	Long Line / A-10	8:00	7:00	Fall River	7:00	HLCO / A-54	2KA	1	Kmax	Fall River	7:00	8:00	Long Line / A-11	8:00	7:00	Fall River	7:00	Recon / A-72	5BH	1	UH60 Blackhawk	Fall River	7:00	8:00	Long Line / A-66	8:00	7:00	Fall River	7:00	HLCO / A-206	4PG	1	UH60 Blackhawk	Fall River	8:00	9:00	Long Line / A-127	9:00	8:00	Fall River	7:00	HLCO / A-68	0CU	1	Chinook CH47	Fall River	8:00	9:00	Fixed Tank / A-67	9:00					7BH	1	UH60 Blackhawk	Fall River	8:00	9:00	Long Line / A-119	9:00				
FAA #	Type	Make/Model	Helibase	Avail	Start	Remarks / A - #	Start	Avail	Helibase	Avail	Remarks / A - #																																																																																
5PJ	1	UH60 Blackhawk	Fall River	7:00	8:00	Long Line / A-10	8:00	7:00	Fall River	7:00	HLCO / A-54																																																																																
2KA	1	Kmax	Fall River	7:00	8:00	Long Line / A-11	8:00	7:00	Fall River	7:00	Recon / A-72																																																																																
5BH	1	UH60 Blackhawk	Fall River	7:00	8:00	Long Line / A-66	8:00	7:00	Fall River	7:00	HLCO / A-206																																																																																
4PG	1	UH60 Blackhawk	Fall River	8:00	9:00	Long Line / A-127	9:00	8:00	Fall River	7:00	HLCO / A-68																																																																																
0CU	1	Chinook CH47	Fall River	8:00	9:00	Fixed Tank / A-67	9:00																																																																																				
7BH	1	UH60 Blackhawk	Fall River	8:00	9:00	Long Line / A-119	9:00																																																																																				
<p style="text-align: center;">FIXED WING</p> <table border="1"> <thead> <tr> <th>FAA #</th> <th>Type</th> <th>Make/Model</th> <th>Base</th> <th>Avail</th> <th>Start</th> <th>Remarks</th> <th>Start</th> <th>Avail</th> <th>Base</th> <th>Avail</th> <th>Remarks</th> </tr> </thead> <tbody> <tr> <td>841</td> <td>1</td> <td>UH60 Blackhawk</td> <td>Fall River</td> <td>7:00</td> <td>7:00</td> <td>24 hr. NVG Hoist</td> <td>7:00</td> <td></td> <td></td> <td></td> <td></td> </tr> </tbody> </table>								FAA #	Type	Make/Model	Base	Avail	Start	Remarks	Start	Avail	Base	Avail	Remarks	841	1	UH60 Blackhawk	Fall River	7:00	7:00	24 hr. NVG Hoist	7:00																																																																
FAA #	Type	Make/Model	Base	Avail	Start	Remarks	Start	Avail	Base	Avail	Remarks																																																																																
841	1	UH60 Blackhawk	Fall River	7:00	7:00	24 hr. NVG Hoist	7:00																																																																																				

ICS 205 - INCIDENT RADIO COMMUNICATIONS PLAN

1. Incident Name: GOLD GUARD 27 BANK A		2. Date/Time Prepared Date: 07/29/2020 Time: 1930		3. Operational Period: Date From: 07/30/20 Time From: 0700		Date To: 07/31/20 Time To: 0700		
4. Communications								
Ch#	Function	Name	Assigned To	Rx Freq	Rx Tone	Tx Freq	Tx Tone	Notes
1	COMMAND	NIFC C2	ALL DIVS	170.4500	123.0 (T2)	168.1000	123.0 (T2)	HAYDEN HILL
2	COMMAND	NIFC C8	ALL DIVS	169.5375	123.0 (T2)	164.7125	123.0 (T2)	LIKELY MTN
3	COMMAND	NIFC C9	ALL DIVS	170.0125	123.0 (T2)	165.2500	123.0 (T2)	MANZANITA LO
4	COMMAND	NIFC C23	ALL DIVS	172.1375	123.0 (T2)	166.9375	123.0 (T2)	WIDOW
5	COMMAND	NIFC C24	ALL DIVS	170.0500	123.0 (T2)	163.1500	123.0 (T2)	COYOTE PEAK
6	TACTICAL	CDF T13	DIV. B/D	151.3775	192.8 (T16)	151.3775	192.8 (T16)	BRANCH I
7	TACTICAL	CDF T27	DIV E/F	159.3075	192.8 (T16)	159.3075	192.8 (T16)	BRANCH I
8	TACTICAL	CDF T28	CAL PINE	151.1825	192.8 (T16)	151.1825	192.8 (T16)	CONTINGENCY BRANCH
9	TACTICAL	VTAC 12	EAST CONT	154.4525	156.7 (T6)	154.4525	156.7 (T6)	CONTINGENCY BRANCH
10	TACTICAL	NIFC T6	DIV G	166.7750	123.0 (T2)	166.7750	123.0 (T2)	BRANCH III
11	TACTICAL	NIFC T1	DIV O	168.0500	123.0 (T2)	168.0500	123.0 (T2)	BRANCH III
12	TACTICAL	CDF T26	DIV R	159.2925	192.8 (T16)	159.2925	192.8 (T16)	BRANCH V
13	TACTICAL	NIFC T5	DIV WT	166.7250	123.0 (T2)	166.7250	123.0 (T2)	BRANCH V
14	TACTICAL	A/G CDF T24	ALL DIVS	151.3325	192.8 (T16)	151.3325	192.8 (T16)	*** AIR TO GROUND ***
15	MEDICAL	CALCORD	ALL DIVS	156.0750	156.7 (T6)	156.0750	156.7 (T6)	
16	EMERGENCY	GUARD 27	EMERGENCY	168.6250		168.6250	110.9 (T1)	EMERGENCY USE ONLY
17								
18								
19								
20	EMERGENCY	GUARD 27	EMERGENCY	168.6250		168.6250	110.9 (T1)	EMERGENCY USE ONLY
5. Special Instructions								
Current Clone for July 30, 2020 *Guard 27* - Com Van contact 707-327-6529								
6. Prepared by (Communications Unit Leader): Name: MIKE HEYFRON - COMI				Signature: <i>Mike Heyfron</i>				
ICS 205 - CONTROLLED UNCLASSIFIED INFORMATION/BASIC				Date/Time: 07/29/20 1930				

ICS 205 - INCIDENT RADIO COMMUNICATIONS PLAN


CONTROLLED UNCLASSIFIED INFORMATION/BASIC

1. Incident Name: GOLD GUARD 27 BANK B	2. Date/Time Prepared Date: 07/29/2020 Time: 1930	3. Operational Period: Date To: 07/31/20 Time To: 0700
---	--	---

4. Communications									
Ch#	Function	Name	Assigned To	Rx Freq	Rx Tone	Tx Freq	Tx Tone	Notes	
1	COMMAND	NIFC C2	ALL DIVS	170.4500	123.0 (T2)	168.1000	123.0 (T2)	HAYDEN HILL	
2	COMMAND	NIFC C8	ALL DIVS	169.5375	123.0 (T2)	164.7125	123.0 (T2)	LIKELY MTN	
3	COMMAND	NIFC C9	ALL DIVS	170.0125	123.0 (T2)	165.2500	123.0 (T2)	MANZANITA LO	
4	COMMAND	NIFC C23	ALL DIVS	172.1375	123.0 (T2)	166.9375	123.0 (T2)	WIDOW MTN	
5	COMMAND	NIFC C24	ALL DIVS	170.0500	123.0 (T2)	163.1500	123.0 (T2)	COYOTE PEAK	
6	TACTICAL	VTAC11	Bat 3 IA	151.1375	156.7 (T6)	151.1375	156.7 (T6)	BRANCH VII	
7									
8									
9	TACTICAL	VTAC 13	MORNING BRIEFING	158.7375	156.7 (T6)	158.7375	156.7 (T6)		
10	TACTICAL	CDF T32	SUPP REPAIR	151.2425	192.8 (T16)	151.2425	192.8 (T16)	SUPP REPAIR	
11									
12									
13									
14	TACTICAL	A/G CDF T24	ALL DIVS	151.3325	192.8 (T16)	151.3325	192.8 (T16)	*** AIR TO GROUND***	
15	MEDICAL	CALCORD	ALL DIVS	156.0750	156.7 (T6)	156.0750	156.7 (T6)		
16	EMERGENCY	GUARD 27	EMERGENCY	168.6250		168.6250	110.9 (T1)	EMERGENCY USE ONLY	
17									
18									
19									
20	EMERGENCY	GUARD 27	EMERGENCY	168.6250		168.6250	110.9 (T1)	EMERGENCY USE ONLY	

5. Special Instructions

Current Clone for July 30, 2020 " Guard 27" - Com Van contact 707-327-6529

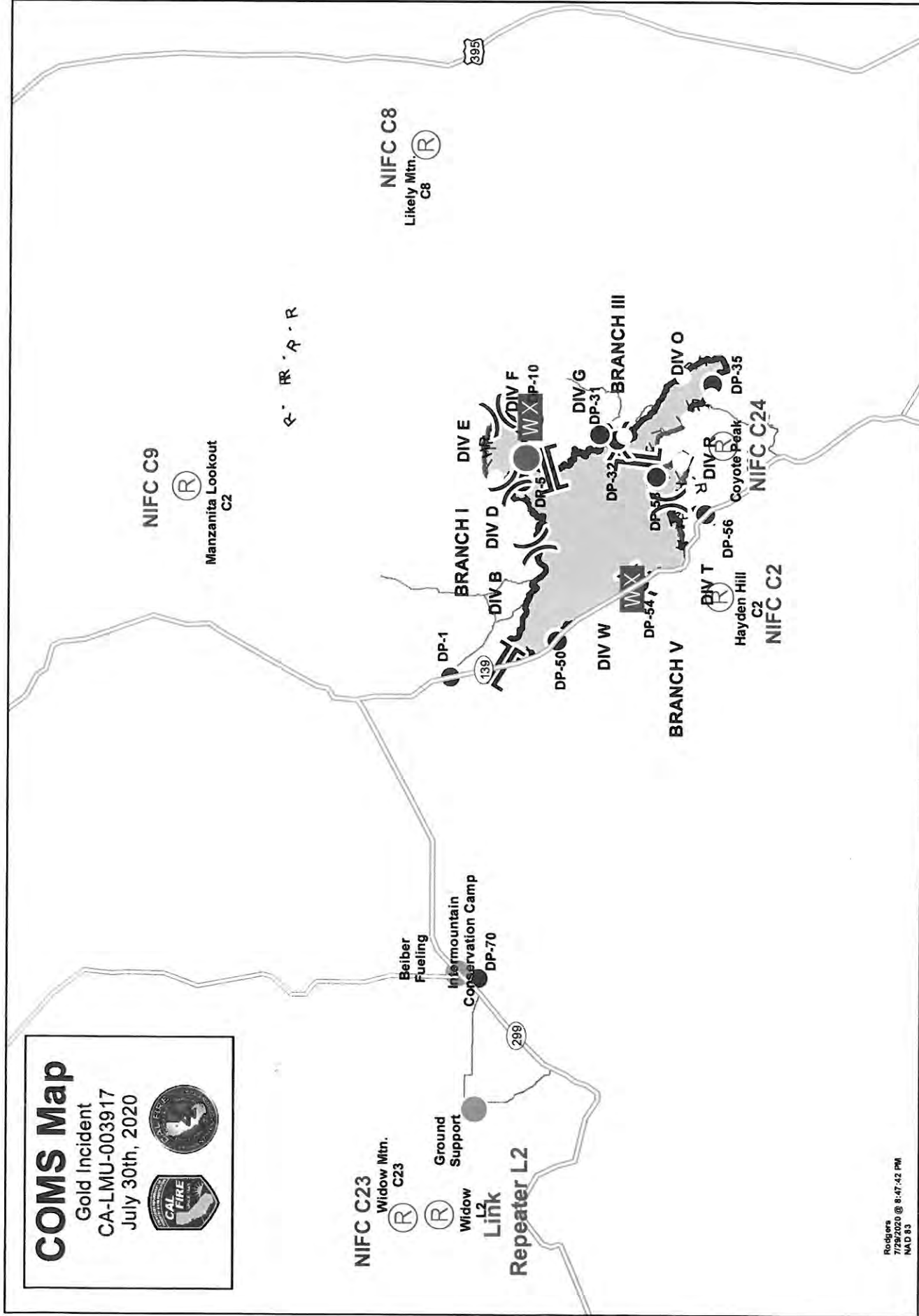
6. Prepared by (Communications Unit Leader): Name: MIKE HEYFRON - COM1	Signature: 
ICS 205 - CONTROLLED UNCLASSIFIED INFORMATION//BASIC	Date/Time: 07/29/20 1930

ICS 205 - INCIDENT RADIO COMMUNICATIONS PLAN

1. Incident Name: GOLD GUARD 27 BANK C		2. Date/Time Prepared Date: 07/29/2020 Time: 19:30		3. Operational Period: Date From: 07/30/20 Time From: 0700		Date To: 07/31/20 Time To: 0700		
4. Communications								
Ch#	Function	Name	Assigned To	Rx Freq	Rx Tone	Tx Freq	Tx Tone	Notes
1	COMMAND	LMU LOCAL	IA	151.2500	123.0 (T2)	159.4050	156.7 (T6)	HAPPY CAMP
2	COMMAND	GDF C10	IA	151.1900	103.5 (T8)	159.2250	146.2 (T5)	BIG VALLEY
3	COMMAND	LNF FIRE	IA	173.1875		164.8000	123.0 (T2)	WIDOW MTN
4	COMMAND	LNF ADMIN	IA	171.4750		164.9125	123.0 (T2)	WIDOW MTN
5	COMMAND	MDF FIRE	IA	170.7375		164.9875	103.5 (T8)	WIDOW MTN
6	COMMAND	MDF ADMIN	IA	173.7875		162.4875	103.5 (T8)	WIDOW MTN
7	COMMAND	MDF SERVICE	IA	169.9500		164.1000	103.5 (T8)	WIDOW MTN
8	COMMAND	BLM NOD EF	IA	171.6250		164.2500	100.0 (T9)	HANEY
9	TACTICAL	BLM SOA	IA	168.3000		168.3000		
10	TACTICAL	CDF T9	IA	151.3850	192.8 (T16)	151.3850	192.8 (T16)	
11	TACTICAL	CDF T10	IA	151.4000	192.8 (T16)	151.4000	192.8 (T16)	
12	TACTICAL	BLM SOA 2	IA	169.4000		169.4000		
13	TACTICAL	AG-43	IA	167.6000		167.6000		
14	TACTICAL	CDF A/G 2	IA	159.2625	192.8 (T16)	159.2625	192.8 (T16)	
15	TACTICAL	CALCORD	IA	156.0750	156.7 (T6)	156.0750	156.7 (T16)	
16	EMERGENCY	GUARD27	EMERGENCY	168.6250		168.6250	110.9 (T1)	EMERGENCY USE ONLY
17								
18								
19								
20								
5. Special Instructions Current Clone for JULY 30, 2020 "GUARD 27" - Com Van contact 707-327-6529								
						Signature: <i>mnh</i> Date/Time: 07/29/2020 19:30		
ICS 205 - CONTROLLED UNCLASSIFIED INFORMATION/BASIC								

COMS Map
 Gold Incident
 CA-LMU-003917
 July 30th, 2020





Rogers
7/29/2020 @ 8:47:42 PM
MAD 83

0 3.5 7 14 Miles

0 11,000 22,000 33,000 66,000 Feet

Incident Command Post (W)

Staging Area (S)

Drop Point (●)

Water Source (W)

Helibase (H)

Hellspot (●)

Spot Fire (●)

Other (●)

Dip Site (●)

Uncontrolled Fire Edge (H)

Completed Dozer Line (XX)

Completed Line (—)

Proposed Dozer Line (X)

MEDICAL PLAN ICS 206	INCIDENT NAME	DATE & TIME PREPARED	OPERATIONAL PERIOD
	GOLD	7/29/2020 1700HRS	7/30/20-7/31/20 0700-0700HRS

MEDICAL AID STATIONS			
NAME	LOCATION	CONTACT NUMBER	SERVICE LEVEL
CAL-MAT	Incident Base	916-622-3371	RN/MD
MERT	Incident Base	916-622-3371	RN/MD

TRANSPORTATION (indicate air or ground)			
NAME	LOCATION	CONTACT NUMBER	SERVICE LEVEL
Semsa Ground Ambulance	Susanville, CA.	530-257-5575	ALS
Semsa Air Ambulance	Susanville & Adin CA	530-257-5575	RN
Guard Helicopter 841 ** (24HR Hoist)**	Fall River Helibase	925-325-4158	ALS

INCIDENT AMBULANCES		
Shasta Ambulance (M70)- **12HR Resource**	Willow Creek Campground	4x4 ALS Fireline Qualified Ambulance
Mountain Medics Ambulance	DP5	4x4 ALS Fireline Qualified Ambulance

HOSPITALS							
NAME	ADDRESS	PHONE #	TRAVEL TIME- minutes		Trauma Center	Burn Center	Helipad
			AIR	GROUND			
Banner Lassen Hospital	1800 Spring Ridge Rd Susanville, CA	530-252-2238	22	55	No	<input type="checkbox"/> No	<input checked="" type="checkbox"/> Yes
Mercy Medical Center	2175 Rosaline Ave. Redding, CA.	530-225-7201	35	120	Level 2	<input type="checkbox"/> No	<input checked="" type="checkbox"/> Yes
U.C Davis Medical Center	2315 Stockton Blvd. Sacramento, CA.	916-734-3790	70	275	Level 1	<input checked="" type="checkbox"/> Yes	<input checked="" type="checkbox"/> Yes

MEDICAL EMERGENCY PROCEDURES


LINE EMERGENCY:
 Crew Supervisor will contact Division Supervisor with patient complaint/condition and location.
 - Division Group Supervisor Contacts:
 1. Closest EMS resource
 2. Communications Unit
 - Communications Unit Contacts:
 1. Ground or Air Ambulance as requested.
 2. Medical Unit (916) 622-3371
 3. Safety
 4. Operations
 - Division Supervisor or designee will serve as point of contact and run medical emergency on assigned channel.
 1. A pre-assigned tactical frequency (CALCORD) should be used for IWI and only for duration of the emergency.
 - Communications Unit will clear the Command channel for emergency traffic as needed for duration of the need.


CAMP EMERGENCY:
 Contact Communications on CALCORD or @ 707-890-6317 with patient complaint/condition and location. Communications will respond appropriate medical response.
 - Communications contacts:
 1. Medical Unit
 2. Safety
 3. Logistics
 4. Operations
 5. Crew Supervisor
 6. Comp/Claims

INCIDENT REPORTING PROCEDURES

CHIEF COMPLAINT _____
 LOCATION OF PATIENT _____
 POINT OF CONTACT _____
 TRANSPORTATION REQUESTED BY: AIR ___ GROUND ___
 POINT OF PICKUP _____
 LAT _____ LONG _____
 PATIENT UNIT ID _____
 IS A LINE MEDIC WITH THE PATIENT: YES ___ NO ___
 AGE _____
 SEX: MALE ___ FEMALE ___
ALL EMERGENCIES—Secure the area and identify witnesses for later investigation. Keep an accurate log of events.

<u>HOSPITAL</u>	<u>LAT</u>	<u>LONG</u>
BANNER LASSEN	40 26.27	120 37.67
MERCY MEDICAL	41 19.11	122 19.20
U.C DAVIS	38 33.28	121 27.35

PREPARED BY: (Medical Unit Leader) Darin Nelson Signature: 

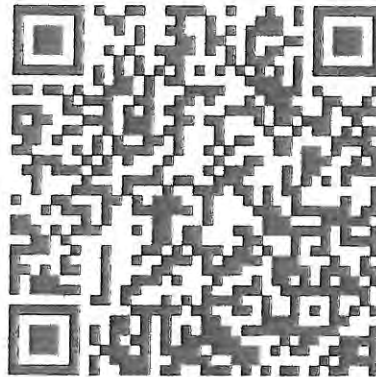
APPROVED BY: (Safety Officer) Doug Ferro Signature: 



INFORMATION

(530)505-1165

Please scan the QR Below for CAL FIRE's Social Media Policy 0691.



INCIDENT MAIL

The PIO Trailer will receive mail/packages shipped to the Incident. Please ensure all mail addressed to the incident follows the format below:

**(YOUR NAME, YOUR ORDER NUMBER)
C/O GOLD INCIDENT BASE CAMP
PUBLIC INFORMATION TRAILER
INTER MOUNTAIN FAIR
44218 A ST., McARTHUR, CA 96056**

LOST AND FOUND

Any items that are found, please bring them to the PIO Trailer located at the entrance to Base Camp and leave them with PIO staff, please leave your name and contact information and description of items lost so we can attempt to reunite you with your items.



DMOB

GOLD INCIDENT
CA – LMU – 003917

- Resources must check-in prior to the Demobilization process.
- In order to be deemed excess, supervisors must submit an ICS 213 to the Resources Unit.
- Resources report to the Demobilization Unit at the times posted on the tentative DMOB list, which is posted around the Incident Base and to the Box account.
- Prior to reporting to DMOB, please return all supplies and equipment.
- Resources will get signatures from the following units:
 - Ground Support (Vehicle Inspection)
All rental vehicles MUST be inspected
 - Training (If they have a trainee)
 - Documentation
 - Time
 - DMOB
- The following will be done by radio at DMOB
 - Motels
 - Supply
 - Communications

Gold Incident
Demobilization Plan
CA-LMU-003917
July 20th, 2020

Supervisory personnel are to identify resources excess to the needs of the incident at the earliest opportunity. If possible, this should be done within 36 hours in advance of a proposed release by filling out a General Message Form (ICS 213) or Declaration of Excess Resource Sheet. Please include name, request number, date, ETD, ETA, and if available for reassignment. By definition, surplus personnel are available for release if they have met the 2:1 work rest requirements, have rested for a minimum of 8 hours.

Section Chiefs will approve all excess resource lists and the lists will be forwarded to the Resources Unit for processing. Operational resource excess lists shall be prepared by the Planning Section and approved by the Planning Section Chief.

The release priorities are:

- Local Government
- OES
- Hired Equipment
- Cooperating Agencies
- Federal Resources
- CAL FIRE Resources

The needs of the incident and off-incident issues may necessitate the modification of these priorities in certain cases.

Information concerning surplus resources will be forwarded to the Redding Expanded Dispatch by the Demobilization Unit (with ECC Support Team at incident). This information will include the resource name, request number, ETD, and ETA. Additionally, the availability of the resource for a new assignment will be provided.

All government equipment and rental vehicles must be safety inspected prior to release. Safety inspections shall be coordinated with the Ground Support Unit Leader. All deficiencies will be corrected prior to departure for home unless agency head signs a waiver of inspection.

Surplus resources lists will be posted within the ICP and at the Demobilization Unit with a schedule for resources to pick up the checkout form (ICS-221) at the Demobilization Unit and begin the checkout process. Finance will be the final stop prior to returning to the Demobilization Unit. All resources must complete the demobilization process. Once the ICS-221 has been completed and returned to the Demobilization Unit, the resource will be released from the incident to home, re-assigned to another incident, or held as directed by Northern Region Operations Center (North-Ops).

All Resources will meet any agency-specific and/or DMV rest requirements before demobilizing from the incident. The operator must be rested prior to driving. A resource encountering a delay enroute will contact the appropriate home unit or incident.

APPROVED:

Dave Russell Incident Commander

Doug Ferro Safety

Bill Weiser Operations Section Chief

Mara Xavier Finance Section Chief

Matt Reich Deputy Logistics Section Chief

Katie Osbourn Expanded Dispatch Supervisor

Chris Burch Planning Section Chief

Chris Lynch Demobilization Unit Leader

TRAINING SPECIALIST MESSAGE

A Training Specialist is available for trainees on the incident.

All State, Federal and local government agency Trainees working on Position Task Books will need to register with the Incident Training Specialist in order to receive proper credit for your assignment.

The TNSP is located in the building behind Safety.

Dennis Martin

Training Specialist

(707) 479-8421



Register using the QR Code



CAL-FIRE INCIDENT MANAGEMENT TEAM IV



24HR LINE RESOURCE - 2 OPERATOR

EMERGENCY SHIFT TICKET and EVALUATION FORM
The responsible Government Officer will complete this form each shift.

Incident or Project Name MISSION	Incident Number CA-MMU-018115	Request Number E-444	Contractor Name THE BEST DOZERS LLC
Agreement Number	Operator #1 FIRST & LAST	Operator #2 FIRST & LAST	Operator Furnished By: <input checked="" type="checkbox"/> Contractor <input type="checkbox"/> Government
Equipment Make 1999 PETERBILT 379	Equipment Model / Type TRANSPORT 18 WHEEL	License Number 12345A1	Operating Supplies Furnished By: <input checked="" type="checkbox"/> Contractor <input type="checkbox"/> Government
Serial Number COMPLETE VIN#	Equipment Use (Circle) Hours Days / Miles Assignment	Equipment Status <input checked="" type="checkbox"/> Under Agreement <input type="checkbox"/> Released by Government <input type="checkbox"/> Withdrawn by Contractor	Remarks/Comments**
Date Mo / Day	Work	Days / Miles	
9/5	Start 2400	17	DIV X
9/6	Stop 0700	7	DIV X
Vendor Rating			
Poor*	Avg.	Good	Exc.
			N/A
Met Performance Expectations	Print Your Name		
Equipment in Safe Working Condition	Govt. Rep. Signature		
Operator Skill Level	<i>Your Signature</i>		
Operates Safely	Contractor Signature		
Operator's Cooperation Level	<i>Jahn Smith</i>		
Overall Performance	Date	Time	
	9/6/17	0700	
* NOTE: any rating of POOR requires an explanation in Comment Section. ** Final evaluation or for more documentation, use a CALFIRE Form 230 or equivalent.			

24HR / 12HR TRANSITION SHIFT TICKET

EMERGENCY SHIFT TICKET and EVALUATION FORM
The responsible Government Officer will complete this form each shift.

Incident or Project Name MISSION	Incident Number CA-MMU-018115	Request Number E-444	Contractor Name THE BEST DOZERS LLC
Agreement Number	Operator #1 FIRST & LAST	Operator #2 FIRST & LAST	Operator Furnished By: <input checked="" type="checkbox"/> Contractor <input type="checkbox"/> Government
Equipment Make 1999 PETERBILT 379	Equipment Model / Type TRANSPORT 18 WHEEL	License Number 12345A1	Operating Supplies Furnished By: <input checked="" type="checkbox"/> Contractor <input type="checkbox"/> Government
Serial Number COMPLETE VIN#	Equipment Use (Circle) Hours Days / Miles Assignment	Equipment Status <input checked="" type="checkbox"/> Under Agreement <input type="checkbox"/> Released by Government <input type="checkbox"/> Withdrawn by Contractor	Remarks/Comments**
Date Mo / Day	Work	Days / Miles	
9/6	Start 1900	12	DIV X
9/6	Stop 2400	5	OFF SHIFT
Vendor Rating			
Poor*	Avg.	Good	Exc.
			N/A
Met Performance Expectations	Print Your Name		
Equipment in Safe Working Condition	Govt. Rep. Signature		
Operator Skill Level	<i>Your Signature</i>		
Operates Safely	Contractor Signature		
Operator's Cooperation Level	<i>Jahn Smith</i>		
Overall Performance	Date	Time	
	9/5/17	1900	
* NOTE: any rating of POOR requires an explanation in Comment Section. ** Final evaluation or for more documentation, use a CALFIRE Form 230 or equivalent.			

12HR LINE RESOURCE - 1 OPERATOR

EMERGENCY SHIFT TICKET and EVALUATION FORM
The responsible Government Officer will complete this form each shift.

Incident or Project Name MISSION	Incident Number CA-MMU-018115	Request Number E-555	Contractor Name THE BEST DOZERS LLC
Agreement Number	Operator #1 FIRST & LAST	Operator #2	Operator Furnished By: <input checked="" type="checkbox"/> Contractor <input type="checkbox"/> Government
Equipment Make 2004 CAT	Equipment Model / Type D6N / TYPE II E	License Number MMU-0000015955	Operating Supplies Furnished By: <input checked="" type="checkbox"/> Contractor <input type="checkbox"/> Government
Serial Number COMPLETE VIN#	Equipment Use (Circle) Hours Days / Miles Assignment	Equipment Status <input checked="" type="checkbox"/> Under Agreement <input type="checkbox"/> Released by Government <input type="checkbox"/> Withdrawn by Contractor	Remarks/Comments**
Date Mo / Day	Work	Days / Miles	
9/7	Start 0700	7	OFF SHIFT
9/7	Stop 1900	12	DIV X
9/7	Start 2400	5	OFF SHIFT
Vendor Rating			
Poor*	Avg.	Good	Exc.
			N/A
Met Performance Expectations	Print Your Name		
Equipment in Safe Working Condition	Govt. Rep. Signature		
Operator Skill Level	<i>Your Signature</i>		
Operates Safely	Contractor Signature		
Operator's Cooperation Level	<i>Jahn Smith</i>		
Overall Performance	Date	Time	
	9/5/17	1900	
* NOTE: any rating of POOR requires an explanation in Comment Section. ** Final evaluation or for more documentation, use a CALFIRE Form 230 or equivalent.			

24HR IN CAMP RESOURCE

EMERGENCY SHIFT TICKET and EVALUATION FORM
The responsible Government Officer will complete this form each shift.

Incident or Project Name MISSION	Incident Number CA-MMU-018115	Request Number E-333	Contractor Name THE BEST CAMP LLC
Agreement Number	Operator #1 FIRST & LAST	Operator #2	Operator Furnished By: <input checked="" type="checkbox"/> Contractor <input type="checkbox"/> Government
Equipment Make TENT	Equipment Model / Type WESTERN SHELTER 19X35	License Number MMU-0000015950	Operating Supplies Furnished By: <input checked="" type="checkbox"/> Contractor <input type="checkbox"/> Government
Serial Number COMPLETE VIN#	Equipment Use (Circle) Hours Days / Miles Assignment	Equipment Status <input checked="" type="checkbox"/> Under Agreement <input type="checkbox"/> Released by Government <input type="checkbox"/> Withdrawn by Contractor	Remarks/Comments**
Date Mo / Day	Work	Days / Miles	
9/2	Start 2400	24	ICP
Vendor Rating			
Poor*	Avg.	Good	Exc.
			N/A
Met Performance Expectations	Print Your Name		
Equipment in Safe Working Condition	Govt. Rep. Signature		
Operator Skill Level	<i>Your Signature</i>		
Operates Safely	Contractor Signature		
Operator's Cooperation Level	<i>Jahn Smith</i>		
Overall Performance	Date	Time	
	9/5/17	1900	
* NOTE: any rating of POOR requires an explanation in Comment Section. ** Final evaluation or for more documentation, use a CALFIRE Form 230 or equivalent.			

CAL FIRE INCIDENT MANAGEMENT TEAM WATER USAGE PLAN

California Drought Emergency

The following shall be considered and implemented by all fire resources as a means to provide maximum efficiencies when utilizing water resources, while minimizing the impacts to private and public water supplies. Accountability shall be maintained for all water supplies that are utilized and care should be applied to ensure proper replacement and/or reimbursement to the supplier/ owner.

Fireline personnel- (During mop up operations)

- Use of Pencil Hose and Garden Nozzles with Shut-Offs.
- Use of Back pumps.
- Dry Mop-up and consolidation of heavy fuels to areas where they can burn out safely
- Locate/ Relocate Firelines to lighter fuels or natural barriers when safe.
- Set up and use portable tanks in anticipation of longer transport times for Water Tenders.
- Use of foams, gels and other water enhancers.
- Evaluate need to mop up in excess of 200 feet from fireline

Road Maintenance and Repair-

- Monitor and water roads only when and where needed.
- Water when most effective (evening and nights).
- Use chemical treatments when available (Magchloride, Omni bind ect).
- Consider use of tertiary or treated water (sp)

Aviation Operations-

- Use of Gels, Foams and Retardants. Set up portable plants.
- Consider Blivits and Pencil hose for interior mop up operations as opposed to numerous bucket drops.
- Establish and use pre-use agreements for existing and known water sources.
- Use large watershed dip sites when able. Minimize use of small, static ponds and lakes.
- Maintain accountability of water used and locations of dip sites.
- Evaluate need for interior bucket drops

Private Water Supplies-

- Notify property owner as early as possible.
- Minimize usage and develop alternative water supplies when and where appropriate.
- Track usage (meter, 214 form) and develop a plan to replace water.
- Make arrangements for reimbursement and damage claims if needed.

Public/ Municipal Water Supplies-

- Notify Agency as soon as possible and request a representative to the incident.
- Identify fill areas and request metering devices. Place on incident map.
- Use alternative or reclaimed water sources when available. Place on incident map.
- Make arrangements for reimbursement and damage claims if needed.

Management and Supervision-

- Use leaders intent and establish Water Conservation as an Management Objective.
- Consider complexity of water use on incidents. Establish a Water Supply Group Supervisor to coordinate additional resources to support the incident needs.
- Complete the Water Usage Report daily and turn in to Finance
- Review this check list and brief daily.

WATER USAGE REPORT

DATE: _____ WORK LOCATION: _____ REQUEST #: _____
 Example: 8/14/13 Example: DIV A Example: E-23

AGENCY or VENDOR NAME: _____ RESOURCE ID: _____
 Examples: CAL FIRE, AAA Water, etc. Examples: WT51, C309, etc.

DROP FORMS OFF IN FINANCE EVERY DAY

	✓One	WATER SOURCE LOCATION <small>Address, DP #, Lat-Long, etc</small>	Hydrant	Open source i.e. pond, reservr	Tank	Gallons Used For Fire Fighting	Gallons Used For Incident Support	Property Owner, Contact Info, Remarks, etc.
			Check One			Gallons Used		

Additional Information:

The intent of this document is to track, record and validate the amount of water used on an incident.
 It is not intended to review the performance of equipment using the water on an incident.

STATE OF CALIFORNIA
 DEPARTMENT OF FORESTRY AND FIRE PROTECTION
PROPERTY CERTIFICATION OF LOCATION OR DAMAGE
CERTIFICATE OF RESPONSIBILITY FOR INCIDENT
OCCURRANCE

Incident#:
Request #:

NOTE: This form must not be used to certify lost, stolen or worn out property. A STD 152 Property Survey Report must be completed.

CAL FIRE-101 page 1 of 2 (1/07)

DOC. NUMBER:

LOCATION / INCIDENT NAME:	INCIDENT NUMBER:	UNIT:	REGION:	DATE:
---------------------------	------------------	-------	---------	-------

THE FOLLOWING ARTICLES WERE: (broken, left on line, damaged, or other)	DATE OF OCCURANCE:
--	--------------------

QUANTITY	UNIT OF MEAS.	CAL FIRE STOCK NUMBER (COMPLETE WHENEVER ASSIGNED)	DESCRIPTION (INDICATE SIZE, MAKE, MODEL, TYPE, ETC., TO CLEARLY DESCRIBE THE ITEM, PROVIDE ADEQUATE DATA TO EFFECTIVELY IDENTIFY EQUIPMENT OR PROPERTY.)	PROPERTY NUMBER

LOCATION OF ITEMS:

REMARKS:

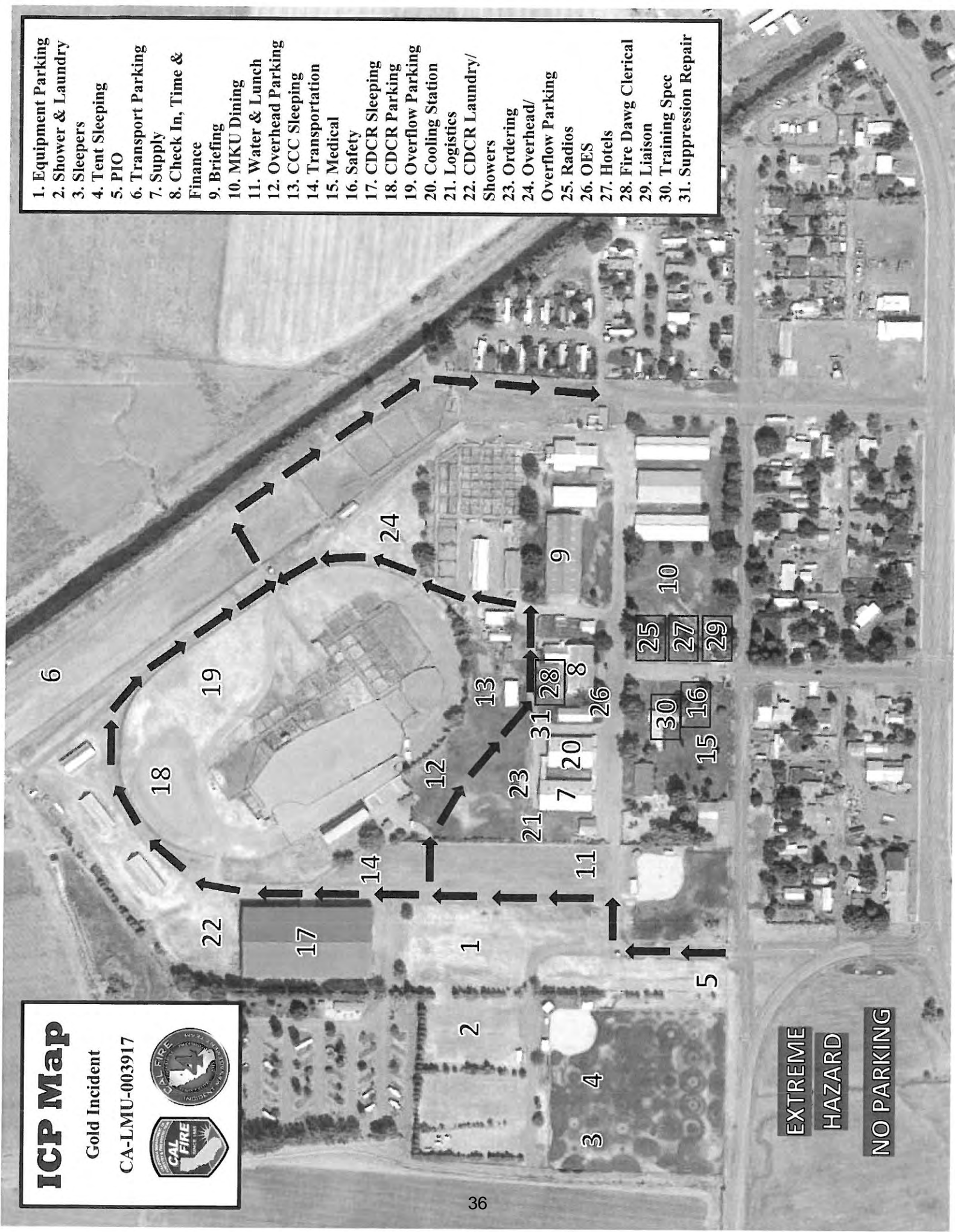
SIGNATURE OF PERSON CERTIFYING OCCURANCE AS DESCRIBED			
SIGNATURE:	PRINTED NAME:	TITLE:	DATE:

DIV: _____ Div's Name: _____
Div. Signature: _____

Attention Division Group Sup., by signing you are verifying that the above list items were left on the incident and may qualify for replacement by the Supply Unit and / or Incident.

*****ORDERS CAN BE EMAILED TO: IMT4SUPPLY@GMAIL.COM*****

1. Equipment Parking
2. Shower & Laundry
3. Sleepers
4. Tent Sleeping
5. PIO
6. Transport Parking
7. Supply
8. Check In, Time & Finance
9. Briefing
10. MKU Dining
11. Water & Lunch
12. Overhead Parking
13. CCC Sleeping
14. Transportation
15. Medical
16. Safety
17. CDCR Sleeping
18. CDCR Parking
19. Overflow Parking
20. Cooling Station
21. Logistics
22. CDCR Laundry/Showers
23. Ordering
24. Overhead/Overflow Parking
25. Radios
26. OES
27. Hotels
28. Fire Dawg Clerical
29. Liaison
30. Training Spec
31. Suppression Repair



ICP Map

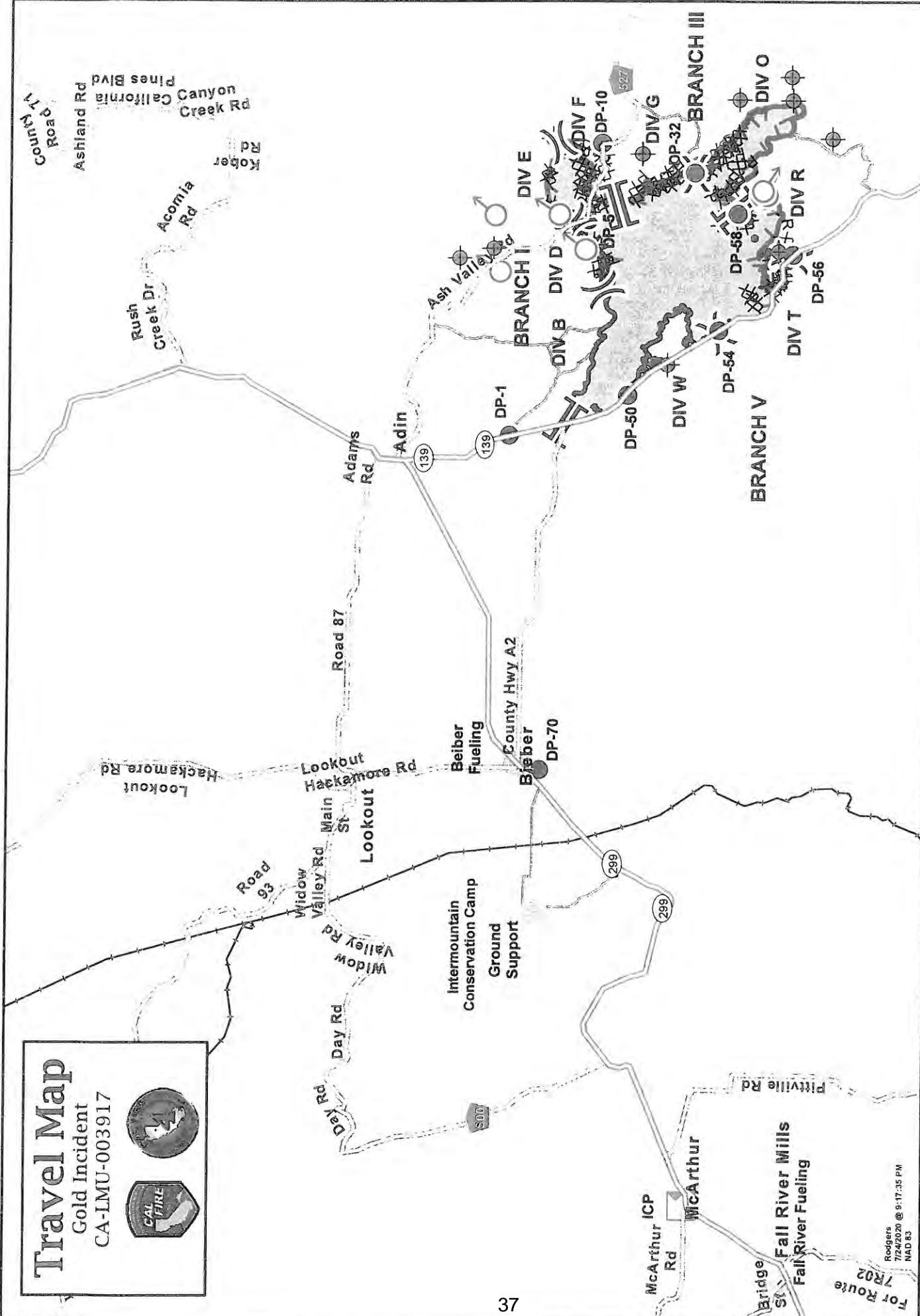
Gold Incident

CA-LMU-003917



EXTREME HAZARD
NO PARKING

Travel Map
 Gold Incident
 CA-LMU-003917



12 Miles
 60,000 Feet

0 3 6 10,000 20,000 30,000

0 10,000 20,000 30,000 60,000 Feet

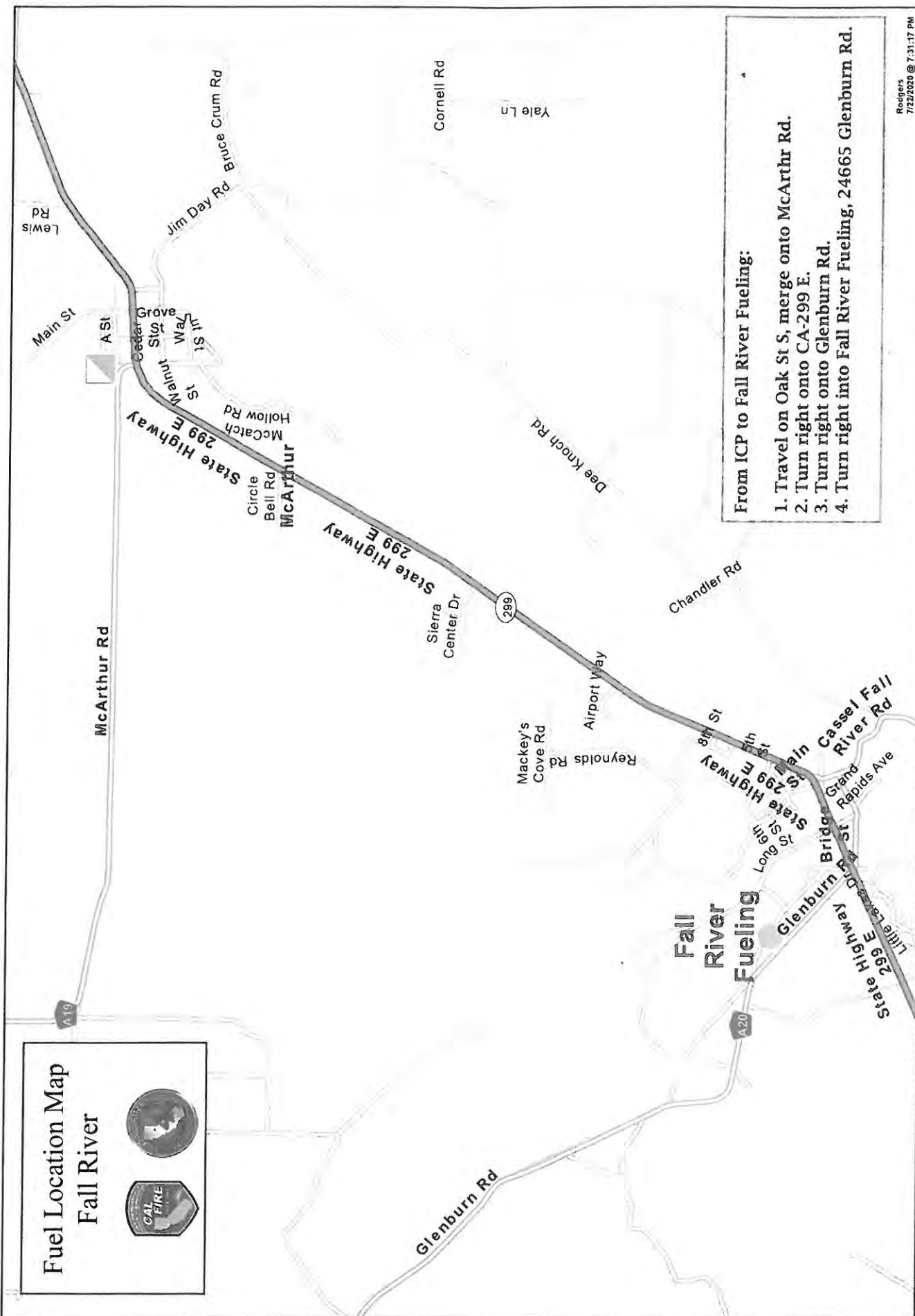
- Incident Command Post
- Staging Area
- Drop Point
- Water Source
- Helibase
- Helispot
- Spot Fire
- Other
- Dip Site
- Uncontrolled Fire Edge
- Completed Dozer Line
- Completed Line
- Proposed Dozer Line
- Hand Line

Rodgers
 7/24/2020 @ 9:17:35 PM
 NAD 83

Fuel Location Map Fall River



- From ICP to Fall River Fueling:**
1. Travel on Oak St S, merge onto McArthur Rd.
 2. Turn right onto CA-299 E.
 3. Turn right onto Glenburn Rd.
 4. Turn right into Fall River Fueling, 24665 Glenburn Rd.



Rodgers
7/22/2020 @ 7:31:17 PM
MAD 83

2 Miles
10,000 Feet

0 0.5 1 2 Miles
0 2,500 5,000 10,000 Feet

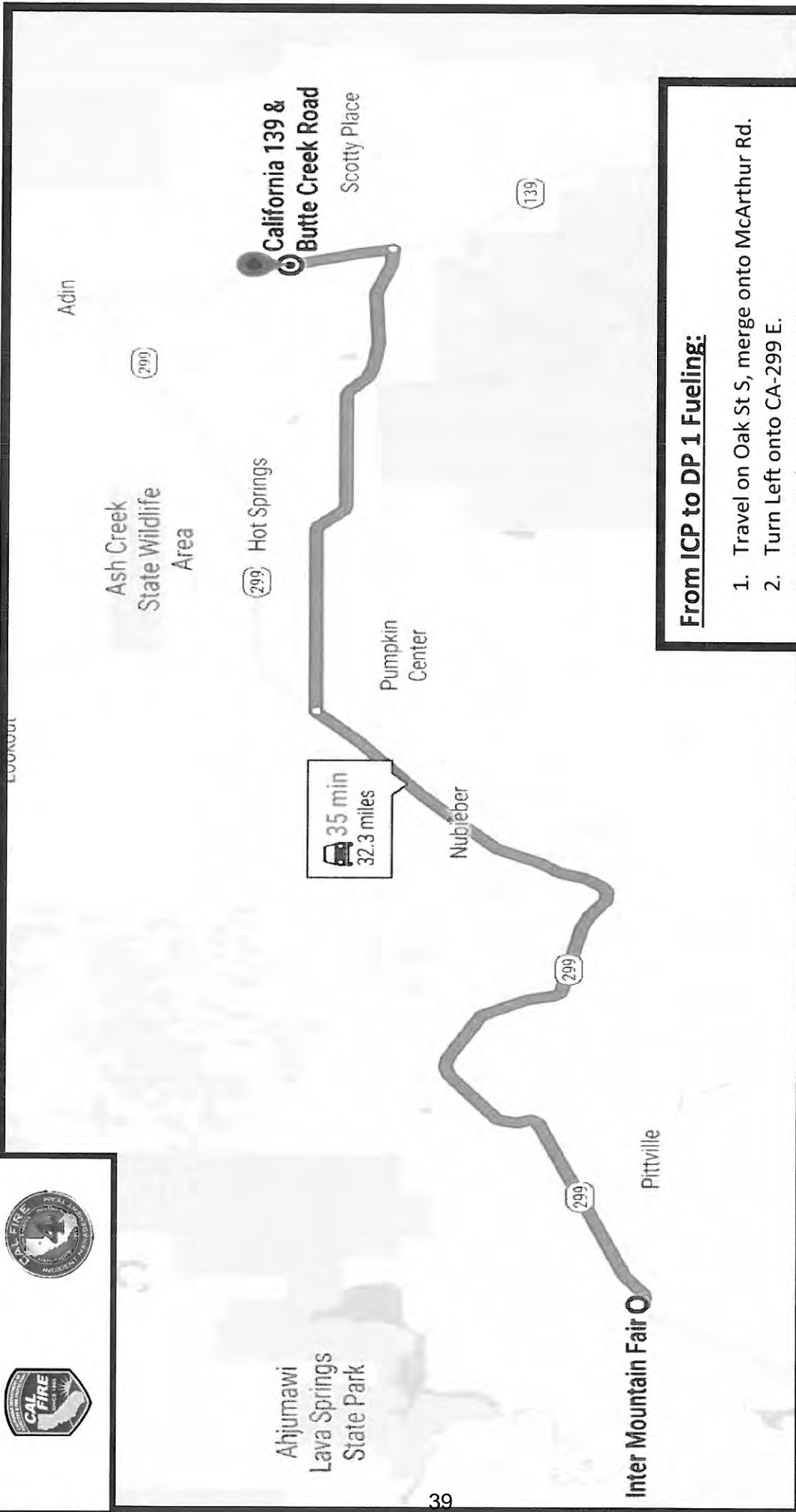
Incident Command Post
 Water Source
 Helibase
 Helispot
 Staging Area
 Drop Point
 Uncontrolled Fire Edge
 Completed Dozer Line
 Completed Line
 Hand Line

Fuel Location Map

DP 1



LOOKOUT



From ICP to DP 1 Fueling:

1. Travel on Oak St S, merge onto McArthur Rd.
2. Turn Left onto CA-299 E.
3. Turn Right onto Susanville Rd
4. Turn left onto CA-139 N
5. Turn Right onto Butte Creek Rd

Intermountain Ground Support Repair Shop Map



Inter Mountain Fair O

Pittville

Nubieber

24 Foothill Road

25 min
19 miles

429

299

299

299

From ICP to Ground Support:

1. Travel on Oak St S, merge onto McArthur Rd.
2. Turn Left onto CA-299 E.
3. Turn left onto Kramer Rd
4. 1 mile Turn Left
5. 1 ½ miles turn left onto Foothill Rd

