

# INCIDENT ACTION PLAN GOLD INCIDENT

CA-LMU-003917

Saturday



## OPERATIONAL PERIOD

8/1/2020 0700

to

8/2/2020 0700

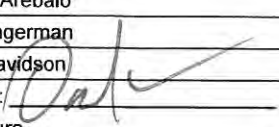


Briefing Frequency - VTAC 13





## ORGANIZATION ASSIGNMENT LIST (ICS 203)

<b>1. Incident Name:</b> GOLD		<b>2. Operational Period: Date From:</b> 8/1/2020 Time From: 0700		<b>Date To:</b> 8/2/2020 Time To: 0700	
<b>3. Incident Commander(s) and Command Staff:</b>			<b>7. Operation Section:</b>		
IC/UC's	Dave Russell, Mike Crites, Darryl Laws (T), Charlie Blankenheim (T)	Operations	Monty Smith, Jeremi Roesler (T)		
Deputy	Eddy Moore	Deputy Operations	Shane Lauderdale		
Safety Officer	Doug Ferro, Bill Murphy (T)	Night Ops	Joshua Bischof		
Information Officer	Steve Kaufmann, Chris Harvey (T)	Staging Area			
Liaison Officer	Dave Pender, Ron Karlen (T)	<b>Branch</b>	<b>I/III</b>	James Hudson(12), R. Szczepanek(T)	
LELO	Josh Allen, LT. Anthony Bertain	Division/Group	B/D/E/F/G/O	Robert Morales	
<b>4. Agency/Organization Representatives:</b>			Division/Group		
Agency/Organization	Name	<b>Branch</b>	<b>V</b>	Raley(12), Swope(T)(12), Benninghoven(T)(12)	
LMU Line Officer	Jim Ferguson	Division/Group	R/W/T	Matt Barnes	
CAL OES	Pat Titus	Division/Group			
CCC	Alex Luquin	<b>Branch</b>			
CDCR	Lt. Jeremy Micone	Division/Group	Supp Repair	Guy Anderson(12), Jaime Hidalgo (T)(12)	
Lassen Co. SO	Dean Growden	Division/Group			
Modoc Co. SO	Tex Doway	Division/Group	Road Group	Shanna Kuempel(T)(12)	
CHP	Danny Kotsier	Division/Group			
Lassen Co. OES	Silas Rojas	Division/Group			
Modoc Co. OES	Heather Hadwick	Division/Group			
CAL TRANS	Jordan Wymer	<b>Branch</b>			
BLM	Al Savage	Division/Group			
		Division/Group			
		Division/Group			
		Division/Group			
		Division/Group			
		<b>Branch</b>			
<b>5. Planning Section:</b>		Division/Group			
Chief	Chris Burch	Division/Group			
Deputy	David Shy	Division/Group			
Resource Unit	Coby Dyche, Gwyndolyn Ozard, Jim Irving, Brian Torosian (T), David Newell (T)	Division/Group			
Situation Unit	D. O'Neil, D. Guillani, J. Pangburn	<b>Branch</b>			
Documentation Unit	Ginger Haight, Allyson Liang	Division/Group			
Demobilization Unit	Chris Lynch, Matt Brady (T)	Division/Group			
GISS	Suzann Leininger	Division/Group			
FBAN	Tim Chavez	Division/Group			
IMET	Jeff Tonkin	Division/Group			
Training Tech. Spec	Dennis Martin	<b>Air Operations Branch</b>		<b>Director:</b>	Greg Bradshaw
Crew Tech. Spec	Jen Coming	Air Support Group Supervisor		Tim Perkins	
Hired Equip Tech Spec	Tim Bingham	Air Tactical Group Supervisor		Skye McGregor	
<b>6. Logistics Section</b>			Helibase Manager		
Chief	Matt Reich				
Deputy	Mathew Brandt	<b>8. Finance/Administration Section:</b>			
Supply Unit	Shawn Burris	Chief	Mara Zaver		
Facilities Unit	Travis Heard, Matt Brown (T)	Deputy	Rob Jenkins		
Ground Support Unit	Conor Stapleton	Time Unit	Greg Tunzi		
Communications Unit	Mike Heyfron (T)	Procurement Unit	Courtney Arebalo		
Medical Unit	Darin Nelson, Daniel Hauer	Comp/Claims Unit	Alyssa Hagerman		
Hotel Tech. Spec.	Matt Aldrich	Cost Unit	Angela Davidson		
<b>Prepared By: Name:</b>	David Shy	<b>Position/Title:</b>	PSC	<b>Signature:</b>	
<b>ICS 203</b>		<b>Date/Time:</b>	7/31/2020 2300 hours		

## Fire and COVID-19 Briefing Checklist

### Self-Awareness / Screening

- Immediately separate yourself from others.
- Notify supervisor if you or others experience:
  - Cough, more than expected
  - Shortness of breath or difficulty breathing
  - New loss of taste or smell
  - Fever
  - Chills
  - Sore throat
  - Muscle pain
- Review and follow crew and division plans to isolate, triage, and transport symptomatic personnel.

### Hygiene on the Fireline

- Properly wash or sanitize your hands often, especially before and after eating or entering a public place, and after coughing or sneezing.
- Avoid handshakes and communal use items.
- Maintain a supply of hand sanitizer and hand wipes. Inform supervisor of needed resupply.
- Disinfect high touch surfaces often:
  - Radios, phones, doors, pumps, fuel cans, etc.

### Social Distancing and Protective Equipment

- Initiate, practice, and remind others of social distancing.
- Conduct briefings and conversations outdoors and at least 6 feet apart.
- Utilize face coverings as a tool when practical.
- Clean or replace dirty face coverings, equipment, and PPE.

### Communications

- Face coverings and social distancing complicate communications. Ensure effective sender/receiver messaging.

Protect yourself, your crew, and your camp!

Find more information: <https://www.nwccg.gov/coronavirus>.

NFES 002646 (06/2020)



# Gold Fire Incident Weather Forecast

FORECAST NO: 11 D/N  
 PREDICTION FOR: Saturday - 24 Hour Shift  
 SHIFT DATE: Aug 1, 2020  
 FORECAST ISSUED: 2000 PDT July 31, 2020

NAME OF FIRE: Gold Fire  
 UNIT: Lassen Modoc  
 Incident Meteorologist: Jeff Tonkin

**WEATHER DISCUSSION:** The dry and consistent weather pattern will continue for a few more days as a ridge of high pressure is parked over the region. Slightly warmer than normal max temperatures and slightly drier than normal RH values will continue through Monday. The wind regime continues to be dominated by terrain with the consistent gusty afternoon westerlies. A weak upper level trough may arrive toward the middle of next week bringing a new threat of thunderstorms to the region...along with slightly cooler temperatures.

### TODAY (SATURDAY DAYTIME):

WEATHER: Sunny.  
 MAX TEMPERATURES: 86 - 91  
 MIN HUMIDITY 4500 ft: 10 - 15 %....pockets of single digits possible.  
 WIND: East and Southeast 3 to 6 mph until 1300...then increasing to West and Northwest 7 to 12 mph with gusts 20-25 mph until 1900 PDT. Winds diminishing thereafter.

LAL: 1 CWR: 0% HAINES: 5  
 STABILITY / INVERSION: Unstable.  
 SMOKE TRANSPORT WIND: West 15 mph.

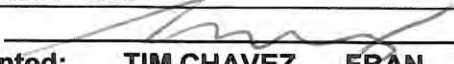
### TONIGHT:

WEATHER: Clear.  
 MIN TEMPERATURES: 45-50.  
 MAX HUMIDITY: 50-60%.  
 WINDS (EYE LEVEL): Downslope or east 3 to 5 mph.

**SUNDAY / SUNDAY NIGHT:** Sunny and continued very dry. Max Temps: 86 - 91. Min RH: 14-19%. Max RH: 50-60%. Wind: Light Southeast early 3 to 6 mph...Becoming West around 1300 and increasing to 7 to 12 with gusts to 20 mph through 1800 PDT. Winds diminishing thereafter.

Extended Forecast	Mon Aug 2	Tue Aug 3	Wed Aug 4	Thu Aug 5
<b>Sky / Wx</b>	Sunny	Sunny	Mostly Sunny Slight chance Tstorms	Mostly Sunny Slight chance Tstorms
<b>Wind:</b>	W 8-12 mph Gust 18-23 mph	W 6 - 10 mph Gust 15-20 mph	W 4 -8 mph Gust 15 mph	W 6 -10 mph Gust 15 mph
<b>Max Temp / Min RH</b>	85-90° 10-15%	85-90° 10-15%	85-90° 12 -17%	84-89° 14-19%
<b>Min Temp / Max RH</b>	50-55° 45-55%	51-56° 35-45%	55-59° 45-55%	54-58° 52-57%
<b>CWR /Haines/ LAL</b>	0% / 3 / 1	0% / 3 / 1	0% / 3 / 1	0% / 3 / 1

# FIRE BEHAVIOR FORECAST

FORECAST NUMBER: 11	TYPE OF FIRE: WILDLAND
FIRE NAME: GOLD	OPERATIONAL PERIOD: 8/1/2020
DATE ISSUED: 7/31/2020	TIME ISSUED: 2000
UNIT: LASSEN-MODOC UNIT, MODOC NF, AND BLM-NOD	SIGNED:  Typed/printed: TIM CHAVEZ FBAN

## INPUTS

WEATHER SUMMARY: CONTINUED HOT AND DRY. HAINES = 5 SEE IMET FORECAST



THESE QR CODES WILL TAKE YOU TO THE PORTABLE RAWS STATION DATA. ON THE RIGHT IS FOR GOLD1 WHICH IS ON HWY 139 ABOVE HAYDEN HILL RD. THE LEFT QR IS FOR GOLD 2 IN ASH VALLEY.



GENERAL: SUNRISE 0601, SUNSET 2021—14 HOURS 20 MIN DAYLIGHT

### FUELS:

- FUELS MOISTURE CONDITIONS ARE CONTINUING TO WORSEN.
- PROBABILITY OF IGNITION 90% AT 1400, 18% AT 0300.
- ENERGY RELEASE COMPONENT OF THE NFDERS IS ABOVE THE 97<sup>TH</sup> PERCENTILE AND AT HISTORIC MAXIMUM FOR 8/1.
- 100 AND 1000 HOUR FUELS ARE AT THE THIRD PERCENTILE AND BELOW HISTORIC MINIMUMS.
- ON 7/15 BITTERBRUSH LIVE FUEL MOISTURE WAS 120% NEARBY, WELL ABOVE CRITICAL OF 80%. SAGEBRUSH WAS CRITICAL AT 80%.
- THE FIRE AREA HAS NO RECORDED SIGNIFICANT FIRE HISTORY.

### TOPOGRAPHY:

- MOST OF THE FIRE IS BETWEEN 4000-6000' ELEVATION.
- MOSTLY PLATEAUS WITH DEEP DRAINAGES. THE MAIN DRAINAGES ARE THE BUTTE CREEK/FOSTER DRAW, ASH CREEK AND WILLOW CREEK.

## OUTPUTS

### ALL BRANCHES

EXTENSIVE SCORCHED CANOPY IN ALL BRANCHES AND DEAD AND DOWNED HEAVY FUEL THAT WAS SMOLDERING COULD IGNITE. INDIVIDUAL TREE TORCHING, GROUP TORCHING AND SHORT CROWN RUNS ARE POSSIBLE. A SPOT FIRE OUTSIDE THE LINE IN GRASS AND BRUSH FUELS COULD RESULT IN RAPID SPREAD WITH UP TO 10' FLAMES, WHICH WOULD TRANSITION TO CROWN FIRE IF UNDER TIMBER.

### AIR OPERATIONS:

LITTLE FIRE ACTIVITY AND NO SMOKE GENERATION. VISIBILITY GOOD ALL DAY.

## SAFETY

- USE THE O-O-D-A LOOP WHEN EVALUATING A COURSE OF ACTION—ORIENT-OBSERVE-DECIDE-ACT
- MAKE SURE TO LOOK UP, LOOK DOWN, AND LOOK AROUND
- MONITOR PERSONNEL FOR SIGNS AND SYMPTOMS OF HEAT INJURY.

# ASSIGNMENT LIST (ICS 204 WF)

CONTROLLED UNCLASSIFIED  
INFORMATION//BASIC

<b>1. Incident Name:</b> <p style="text-align: center; font-weight: bold;">GOLD</p>	<b>2. Operational Period:</b> Date From: 08/01/20    Date To: 08/02/20 Time From: 0700        Time To: 0700	<b>3. Branch</b> <b>Division</b> <p style="text-align: center; font-weight: bold;">I/III                      B/D/E/F/G/O</p>
----------------------------------------------------------------------------------------	-------------------------------------------------------------------------------------------------------------------	----------------------------------------------------------------------------------------------------------------------------------

Page 1 of 2

<b>4. Operations Personnel:</b> Operations Section Chief: <b>Monty Smith, Jeremi Roesler (T)</b> Branch Director: <b>James Hudson(12), R. Szczepanek(T)</b> Division/Group Supervisor: <b>Robert Morales</b>	Night Ops: <b>Joshua Bischof</b> Branch Safety: <b>Douglas Stuart</b> Air Attack: <b>Skye McGregor</b>
-----------------------------------------------------------------------------------------------------------------------------------------------------------------------------------------------------------------------	--------------------------------------------------------------------------------------------------------------

5. Resources Assigned:	** Resources Below in Bold are 12 Hour **							
Resource Identifier	ALS	LWD	Leader	Personnel	Request #	Hours	Reporting Location	
<b>STC LNU 9146C</b>		<b>8/2</b>	<b>ARAGON, CHRIS</b>	16	<b>E-13</b>	<b>0700-1900</b>	<b>DP5</b>	
<b>STC SCU 9160C</b>		<b>7/14</b>	<b>COLLINS, CRAIG</b>	18 +/-	<b>E-364</b>	<b>0700-1900</b>	<b>DP5</b>	
**STC TGU 9250C			DARNALL, ETHAN	18 +/-	E-333	0700-0700	DP5	
<b>STC MMU 9420C</b>			<b>PIMENTEL, MARK</b>	18 +/-	<b>E-258</b>	<b>0700-1900</b>	<b>DP5</b>	
<b>STG LNU 9142G</b>			<b>RYAN, KEVIN</b>	33 +/-	<b>C-40</b>	<b>0700-1900</b>	<b>DP5</b>	
<b>**STG LMU 9220G</b>			<b>McKINNY</b>	32	<b>C-9</b>	<b>0700-1900</b>	<b>DP5</b>	
<b>STG SHU 9240G</b>			<b>HAGAN, JEFFREY O</b>	33 +/-	<b>C-13</b>	<b>0700-1900</b>	<b>DP5</b>	
<b>STG TGU 9252G</b>		<b>8/1</b>	<b>THOMAS, LUKE</b>	27	<b>C-42</b>	<b>0700-1900</b>	<b>DP5</b>	
<b>**CRW2 C-5 LMU CREW1A</b>		<b>8/2</b>	<b>WOODWARD, LUKE</b>	9	<b>C-5</b>	<b>0700-1900</b>	<b>DP5</b>	
<b>CRW2 C-15 WEST COAST</b>			<b>TORRES, LEONARDO</b>	20	<b>C-15</b>	<b>0700-1900</b>	<b>DP5</b>	
<b>CRW2 C-16 REFOREST</b>			<b>RINCON, JOSE</b>	20	<b>C-16</b>	<b>0700-1900</b>	<b>DP5</b>	
<b>CRW2 C-18 OASIS</b>			<b>DIETZ, WILLIAM</b>	20	<b>C-18</b>	<b>0700-1900</b>	<b>DP5</b>	
W/T PVT E-23 - SHERER			RICHARDSON, DON	2	E-23	0700-0700	DP5	
W/T PVT E-25 - DUNLAP			DON DUNLAP	2	E-25	0700-0700	DP5	
W/T PVT E-26 - LUNTEY'S			LUNTEY, KEVIN	2	E-26	0700-0700	DP5	
<b>W/T PVT E-27 - ACKLEY</b>			<b>RAY ACKLEY</b>	2	<b>E-27</b>	<b>0700-1900</b>	<b>DP5</b>	
<b>W/T PVT E-142 - TRAFFIC</b>		<b>8/5</b>	<b>FORDE, BOB</b>	2	<b>E-142</b>	<b>0700-1900</b>	<b>DP5</b>	
<b>W/T PVT E-144 - GOLDEN STATE</b>			<b>BALES, CODY</b>	1	<b>E-144</b>	<b>0700-1900</b>	<b>DP5</b>	

**6. Work Assignments:**  
 #6 Hold Fire within established Control Lines.  
 #7 Hold and Improve Control Lines to mitigate threat of fire escaping.  
 #11 Mop up 500' interior to eliminate threat to the fire line.  
 #13 Pull Hose Lays.  
 #14 Back Haul Excess Trash/Hose/Water.  
 #15 Perform Tactical Patrol around structures for the potential of new starts, Mop up 500' around structures to prevent structure damage, and  
 #19 Identify and document suppression repair needs to facilitate timely completion of repairs.

**7. Special Instructions:**  
 \*\*Resources TENTATIVELY identified for the 3-day IAP 8/3-8/5.

**8. Communications**

Name	Ch	Function	Rx Freq	Rx Tone	Tx Freq	Tx Tone	Notes
NIFC C2	1	COMMAND	170.4500	123.0 (T2)	168.1000	123.0 (T2)	HAYDEN HILL
CDF T13	6	TACTICAL	151.3775	192.8 (T16)	151.3775	192.8 (T16)	BRANCH I/III
A/G CDF T24	14	TACTICAL	151.3325	192.8 (T16)	151.3325	192.8 (T16)	*** AIR TO GROUND ***
CALCORD	15	MEDICAL	156.0750	156.7 (T6)	156.0750	156.7 (T6)	
GUARD 27	16	EMERGENCY	168.6250		168.6250	110.9 (T1)	EMERGENCY USE ONLY

**9. Prepared by: Name:**                      David Newell                      RESL(T)  
 Signature:

**ICS 204**                                              Date/Time: 7/31/2020 2200                      Personnel Count: 275





# ASSIGNMENT LIST (ICS 204 WF)

CONTROLLED UNCLASSIFIED  
INFORMATION//BASIC

<b>1. Incident Name:</b>	<b>2. Operational Period:</b>	<b>3. Branch</b>	<b>Division</b>
<b>GOLD</b>	Date From: 08/01/20      Date To: 08/02/20 Time From: 0700              Time To: 0700	<b>V</b>	<b>R/W/T</b>

<b>4. Operations Personnel:</b>		Page 1 of 1
Operations Section Chief: <b>Monty Smith, Jeremi Roesler (T)</b> Branch Director: <b>Raley(12), Swope(T)(12), Benninghoven(T)(12)</b> Division/Group Supervisor: <b>Matt Barnes</b>	Night Ops: <b>Joshua Bischof</b> Branch Safety: <b>Jason Ralls</b> Air Attack: <b>Skye McGregor</b>	

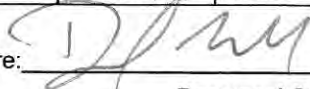
5. Resources Assigned:	** Resources Below in Bold are 12 Hour **						
Resource Identifier	ALS	LWD	Leader	Personnel	Request #	Hours	Reporting Location
<b>STC MEU 9110C</b>		<b>7/27</b>	<b>CRABTREE, MICHAEL</b>	18 +/-	<b>E-365</b>	<b>0700-1900</b>	<b>DP1</b>
<b>STC HUU 9120C</b>			<b>MCLAUGHLIN, RON</b>	18 +/-	<b>E-298</b>	<b>0700-1900</b>	<b>DP1</b>
**ENG3 LMU 2264		8/4	BEACHAM, NICKOLAS	3	E-31	0700-0700	DP1
**ENG3 LMU 2274				3 +/-	E-33	0700-0700	DP1
**ENG3 LMU 2293			DENNEL, MATHEW	4	E-32	0700-0700	DP1
**ENG3 LMU 2294		7/30	HUGHES, JACOB	4	E-34	0700-0700	DP1
<b>**STG LMU 9220G</b>			<b>McKINNY</b>	32	<b>C-9</b>	<b>0700-1900</b>	<b>DP1</b>
<b>STG SHU 9244G</b>			<b>TAVALERO, GREGORY</b>	33 +/-	<b>C-44</b>	<b>0700-1900</b>	<b>DP1</b>
<b>CRW2 C-19 OASIS</b>			<b>DODDS, LELAND</b>	20	<b>C-19</b>	<b>0700-1900</b>	<b>DP1</b>
<b>CRW2 C-20 GRIZZLY</b>			<b>HINER, THEODORE</b>	20	<b>C-20</b>	<b>0700-1900</b>	<b>DP1</b>
**STL SHU 9242L		8/1	QUIGLEY, GARRETT	7	E-80	0700-0700	DP1
WT PVT E-22 - OILAR			HAWKS, TODD	2	E-22	0700-0700	DP1
WT1 PVT E-284 - NORTHSTAT			PIERCE, DICKSON	2	E-284	0700-0700	DP1
<b>WT1 PVT E-286 - TOUGH</b>			<b>MARK HAMILTON</b>	2	<b>E-286</b>	<b>0700-1900</b>	<b>DP1</b>
<b>**WT1 PVT E-292 - FORTNER</b>			<b>FORTNER, TRAVIS</b>	2	<b>E-292</b>	<b>0700-1900</b>	<b>DP1</b>
<b>WT1 PVT E-294 - GENE</b>			<b>HOWARD, TRYSTAN</b>	2	<b>E-294</b>	<b>0700-1900</b>	<b>DP1</b>
<b>**WT1 PVT E-349 - ALGERINE</b>			<b>WARREN, DAVID</b>	1	<b>E-349</b>	<b>0700-1900</b>	<b>DP1</b>
<b>FALM PVT O-334 NORTH ZONE</b>			<b>BURG, GARY</b>	2	<b>O-334</b>	<b>0700-1900</b>	<b>DP1</b>

**6. Work Assignments:**  
 #11 Mop up 300' interior to eliminate threat to the fire line.  
 #13 Pull Hose Lays.  
 #14 Back Haul Excess Trash/Hose/Water.  
 #19 Identify and document suppression repair needs to facilitate timely completion of repairs.

**7. Special Instructions:**  
 \*\*Resources TENTATIVELY identified for the 3-day IAP 8/3-8/5.

**8. Communications**

Name	Ch	Function	Rx Freq	Rx Tone	Tx Freq	Tx Tone	Notes
NIFC C2	1	COMMAND	170.4500	123.0 (T2)	168.1000	123.0 (T2)	HAYDEN HILL
CDF T27	7	TACTICAL	159.3075	192.8 (T16)	159.3075	192.8 (T16)	BRANCH V
A/G CDF T24	14	TACTICAL	151.3325	192.8 (T16)	151.3325	192.8 (T16)	*** AIR TO GROUND ***
CALCORD	15	MEDICAL	156.0750	156.7 (T6)	156.0750	156.7 (T6)	
GUARD 27	16	EMERGENCY	168.6250		168.6250	110.9 (T1)	EMERGENCY USE ONLY

**9. Prepared by: Name:** David Newell      RESL(T)  
 Signature: 

ICS 204      Date/Time: 7/31/2020 2200      Personnel Count: 175

# ASSIGNMENT LIST (ICS 204 WF)

CONTROLLED UNCLASSIFIED  
INFORMATION//BASIC

<b>1. Incident Name:</b> <p style="text-align: center; font-weight: bold;">GOLD</p>	<b>2. Operational Period:</b> Date From: 08/01/20      Date To: 08/02/20 Time From: 0700              Time To: 0700	<b>3. Branch</b> <b>Division</b> <p style="text-align: center; font-weight: bold;">Supp Repair</p>
----------------------------------------------------------------------------------------	---------------------------------------------------------------------------------------------------------------------------	-------------------------------------------------------------------------------------------------------

Page 1 of 5

<b>4. Operations Personnel:</b> Operations Section Chief: <b>Monty Smith, Jeremi Roesler (T)</b> Branch Director: Division/Group Supervisor: <b>Guy Anderson(12), Jaime Hidalgo(T)(12)</b>	Night Ops: <b>Joshua Bischof</b> Branch Safety: Air Attack: <b>Skye McGregor</b>
-----------------------------------------------------------------------------------------------------------------------------------------------------------------------------------------------------	----------------------------------------------------------------------------------------

5. Resources Assigned:		** Resources Below in Bold are 12 Hour **					
Resource Identifier	ALS	LWD	Leader	Personnel	Request #	Hours	Reporting Location
CRW2 C-14 REFOREST		8/5	RINCON, JOSE	20	C-14	0700-1900	ICP
CRW2 C-17 OASIS		8/5	FINCH, DEREK	20	C-17	0700-1900	ICP
CRW2 C-21 OREGON WOODS			ALFORD	20	C-21	0700-1900	ICP
CRW2 C-34 INBOUND			KIGER, CHRISTOPHER	20	C-34	0700-1900	ICP
CRW2 C-35 INBOUND			NETTLESHIP, WES	20	C-35	0700-1900	ICP
DOZ PVT E-9 - THOMPSON			SAM THOMPSON	1	E-9	0700-1900	ICP
DOZ PVT E-18 - OILAR			WHITE, JAMES	1	E-18	0700-1900	ICP
DOZ PVT E-19 - BUSHEY			WARD, LEE	1	E-19	0700-1900	ICP
DOZ PVT E-20 - SHERER			SHERER, JIM	1	E-20	0700-1900	ICP
DOZ PVT E-165 - ALGERINE			BURNS, TIM	1	E-165	0700-1900	ICP
DOZ PVT E-166 - NORTHSTATE			NICKELL, CORY	1	E-166	0700-1900	ICP
DOZ PVT E-167 - NORTHSTATE		8/4	RODRIGUE, DANA	1	E-167	0700-1900	ICP
DOZ PVT E-176 - NORTHSTATE		8/4	WYLIE, MITCHELL	1	E-176	0700-1900	ICP
DOZ PVT E-271 - ACT			EILTS, JON	1	E-271	0700-1900	ICP
DOZ PVT E-272 - SCHREDER			HALL, CORY	1	E-272	0700-1900	ICP
DOZ PVT E-273 - BACKWOODS			JUNGWIRTH, JERRY	1	E-273	0700-1900	ICP
DOZ PVT E-274 - MATANDY			HARKNESS, MATT	1	E-274	0700-1900	ICP
DOZ PVT E-275 - COTTON			MAZZOTTA, ZAC	1	E-275	0700-1900	ICP

**6. Work Assignments:**  
 Identify and document suppression repair needs.  
 Implement suppression repair plan.

**7. Special Instructions:**  
 All resources 12hr  
 \*\*Resources TENTATIVELY identified for the 3-day IAP 8/3-8/5.

8. Communications							
Name	Ch	Function	Rx Freq	Rx Tone	Tx Freq	Tx Tone	Notes
NIFC C2	1	COMMAND	170.4500	123.0 (T2)	168.1000	123.0 (T2)	HAYDEN HILL
CDF T32	10	TACTICAL	151.2425	192.8 (T16)	151.2425	192.8 (T16)	SUPP REPAIR
A/G CDF T24	14	TACTICAL	151.3325	192.8 (T16)	151.3325	192.8 (T16)	*** AIR TO GROUND ***
CALCORD	15	MEDICAL	156.0750	156.7 (T6)	156.0750	156.7 (T6)	
GUARD 27	16	EMERGENCY	168.6250		168.6250	110.9 (T1)	EMERGENCY USE ONLY

**9. Prepared by: Name:**                      David Newell                      RESL(T)  
 Signature:

**ICS 204**                      Date/Time: 7/31/2020 2200                      Personnel Count: 113

# ASSIGNMENT LIST (ICS 204 WF)

CONTROLLED UNCLASSIFIED  
INFORMATION//BASIC

<b>1. Incident Name:</b> <p style="text-align: center; font-weight: bold;">GOLD</p>	<b>2. Operational Period:</b> Date From: 08/01/20    Date To: 08/02/20 Time From: 0700    Time To: 0700	<b>3. Branch</b> <b>Division</b> <p style="text-align: center; font-weight: bold;">Supp Repair</p>
----------------------------------------------------------------------------------------	---------------------------------------------------------------------------------------------------------------	-------------------------------------------------------------------------------------------------------

**4. Operations Personnel:** Page 2 of 5

Operations Section Chief: <b>Monty Smith, Jeremi Roesler (T)</b> Branch Director: Division/Group Supervisor: <b>Guy Anderson(12), Jaime Hidalgo(T)(12)</b>	Night Ops: <b>Joshua Bischof</b> Branch Safety: Air Attack: <b>Skye McGregor</b>
------------------------------------------------------------------------------------------------------------------------------------------------------------------	----------------------------------------------------------------------------------------

5. Resources Assigned:		** Resources Below in Bold are 12 Hour **					
Resource Identifier	ALS	LWD	Leader	Personnel	Request #	Hours	Reporting Location
DOZ PVT E-277 - ERIC			<b>SPRATT, ERIC</b>	1	E-277	<b>0700-1900</b>	ICP
DOZ PVT E-278			<b>NEWSOM, RANDY</b>	1	E-278	<b>0700-1900</b>	ICP
DOZ PVT E-279 - SALINAS			<b>RAMIREZ, AARON</b>	1	E-279	<b>0700-1900</b>	ICP
DOZ PVT E-280 - LEPAGE			<b>GREER, MIKE</b>	1	E-280	<b>0700-1900</b>	ICP
DOZ PVT E-281 - PRODUMP			<b>MUCCULIF, TODD</b>	1	E-281	<b>0700-1900</b>	ICP
DOZ PVT E-282 - M. PETERS			<b>WELDON, CODY</b>	1	E-282	<b>0700-1900</b>	ICP
DOZ PVT E-343 - MILLER			<b>MILLER, HAROLD</b>	1	E-343	<b>0700-1900</b>	ICP
W/T OES 31			<b>BOWERS, JOE</b>	1	E-87	<b>0700-1900</b>	ICP
W/T PVT E-24 - INGRAHAM			<b>INGRAHAM, BRIAN</b>	1	E-24	<b>0700-1900</b>	ICP
W/T PVT E-143 - FORD		8/3	<b>FORD, GARY</b>	1	E-143	<b>0700-1900</b>	ICP
W/T1 PVT E-290 - T & S DVBE			<b>JONES, ROBERT</b>	1	E-290	<b>0700-1900</b>	ICP
W/T1 PVT E-348 - BOB			<b>FOURBY, SHAWN</b>	1	E-348	<b>0700-1900</b>	ICP
W/T PVT E-350 - WATER DOGS			<b>EPPERSON, JEFF</b>	1	E-350	<b>0700-1900</b>	ICP
W/T PVT E-351 - WATER DOGS							ICP
W/T PVT E-352 - USC SUPPLY			<b>MOULTRIE, JAMES</b>	1	E-352	<b>0700-1900</b>	ICP
W/T PVT E-353 - MARIAH			<b>DOOLING, MIKE</b>	1	E-353	<b>0700-1900</b>	ICP
EXC PVT E-219 - NORTHSTATE			<b>CARSON, METZ</b>	1	E-219	<b>0700-1900</b>	ICP
EXC PVT E-220 - HOLT LOGGING			<b>HARDIG, PAUL</b>	1	E-220	<b>0700-1900</b>	ICP

**6. Work Assignments:**  
Identify and document suppression repair needs.  
Implement suppression repair plan.

**7. Special Instructions:**  
All resources 12hr  
\*\*Resources TENTATIVELY identified for the 3-day IAP 8/3-8/5.

**8. Communications**

Name	Ch	Function	Rx Freq	Rx Tone	Tx Freq	Tx Tone	Notes
NIFC C2	1	COMMAND	170.4500	123.0 (T2)	168.1000	123.0 (T2)	HAYDEN HILL
CDF T32	10	TACTICAL	151.2425	192.8 (T16)	151.2425	192.8 (T16)	SUPP REPAIR
A/G CDF T24	14	TACTICAL	151.3325	192.8 (T16)	151.3325	192.8 (T16)	*** AIR TO GROUND ***
CALCORD	15	MEDICAL	156.0750	156.7 (T6)	156.0750	156.7 (T6)	
GUARD 27	16	EMERGENCY	168.6250		168.6250	110.9 (T1)	EMERGENCY USE ONLY

**9. Prepared by: Name:** David Newell                      RESL(T)                      Signature:

**ICS 204**                      Date/Time: 7/31/2020 2200                      Personnel Count: 17

# ASSIGNMENT LIST (ICS 204 WF)

CONTROLLED UNCLASSIFIED  
INFORMATION//BASIC

<b>1. Incident Name:</b> <p style="text-align: center; font-weight: bold;">GOLD</p>	<b>2. Operational Period:</b> Date From: 08/01/20    Date To: 08/02/20 Time From: 0700    Time To: 0700	<b>3. Branch</b> <b>Division</b> <p style="text-align: center; font-weight: bold;">Supp Repair</p>
----------------------------------------------------------------------------------------	---------------------------------------------------------------------------------------------------------------	-------------------------------------------------------------------------------------------------------

**4. Operations Personnel:** Page 3 of 5

Operations Section Chief: <b>Monty Smith, Jeremi Roesler (T)</b> Branch Director: Division/Group Supervisor: <b>Guy Anderson(12), Jaime Hidalgo(T)(12)</b>	Night Ops: <b>Joshua Bischof</b> Branch Safety: Air Attack: <b>Skye McGregor</b>
------------------------------------------------------------------------------------------------------------------------------------------------------------------	----------------------------------------------------------------------------------------

5. Resources Assigned:	** Resources Below in Bold are 12 Hour **							
Resource Identifier	ALS	LWD	Leader	Personnel	Request #	Hours	Reporting Location	
EXC PVT E-221 - PETERS INC			<b>PETERS, MIKE</b>	1	E-221	0700-1900	ICP	
EXC PVT E-222 - COLEMAN			<b>COLEMAN, JOE</b>	1	E-222	0700-1900	ICP	
EXC PVT E-379 - RMB			<b>HELM, JOSH</b>	1	E-379	0700-1900	ICP	
EXC PVT E-380			<b>FERRI, LEIF</b>	1	E-380	0700-1900	ICP	
MAS PVT E-218 - BUCK TRKNG			<b>LASSEN, STEVE</b>	1	E-218	0700-1900	ICP	
MAS PVT E-223 - WURLITZER			<b>NEURKOVER, TOM</b>	1	E-223	0700-1900	ICP	
MAS PVT E-374 - T & S DVBE			<b>LANDALE, JASON</b>	1	E-374	0700-1900	ICP	
MAS PVT E-376 - HERTZIG			<b>HERTZIG, JOHN</b>	1	E-376	0700-1900	ICP	
MAS PVT E-381 CLAYTON			<b>CLAYTON, GRAHAM</b>	1	E-381	0700-1900	ICP	
MAS PVT E-387 - SUNRISE			<b>WILLIAMS, BRANDON</b>	1	E-387	0700-1900	ICP	
FEL PVT E-252 - WARNER			<b>ALLEN, BOBBY</b>	1 +/-	E-252	0700-1900	ICP	
SKD PVT E-302 - WARNER			<b>SERAL, JOHN</b>	1 +/-	E-302	0700-1900	ICP	
SKG PVT E-256 - BUCK			<b>KENNEMORE, KELLY</b>	1	E-256	0700-1900	ICP	
FALM O-265 - LONE PINE			<b>RANDY</b>	2	O-265	0700-1900	ICP	
FALM PVT O-266 - MOD SAW			<b>STACHER, NICK</b>	2	O-266	0700-1900	ICP	
FALM PVT O-332 BUCK MASON			<b>MASON, JEREMY</b>	2	O-332	0700-1900	ICP	
HEQB SIMPSON			<b>SIMPSON, EDWIN</b>	1	O-390	0700-1900	ICP	
HEQB(T) VAN GOIDSENHOVEN			<b>VAN GOIDSENHOVEN, D</b>	1	O-387	0700-1900	ICP	

**6. Work Assignments:**  
Identify and document suppression repair needs.  
Implement suppression repair plan.

**7. Special Instructions:**  
All resources 12hr  
\*\*Resources TENTATIVELY identified for the 3-day IAP 8/3-8/5.

**8. Communications**

Name	Ch	Function	Rx Freq	Rx Tone	Tx Freq	Tx Tone	Notes
NIFC C2	1	COMMAND	170.4500	123.0 (T2)	168.1000	123.0 (T2)	HAYDEN HILL
CDF T32	10	TACTICAL	151.2425	192.8 (T16)	151.2425	192.8 (T16)	SUPP REPAIR
A/G CDF T24	14	TACTICAL	151.3325	192.8 (T16)	151.3325	192.8 (T16)	*** AIR TO GROUND ***
CALCORD	15	MEDICAL	156.0750	156.7 (T6)	156.0750	156.7 (T6)	
GUARD 27	16	EMERGENCY	168.6250		168.6250	110.9 (T1)	EMERGENCY USE ONLY

**9. Prepared by: Name:** David Newell                      RESL(T)  
Signature:

**ICS 204**                      Date/Time: 7/31/2020 2200                      Personnel Count: 21

# ASSIGNMENT LIST (ICS 204 WF)

CONTROLLED UNCLASSIFIED  
INFORMATION//BASIC

<b>1. Incident Name:</b> <p style="text-align: center; font-weight: bold;">GOLD</p>	<b>2. Operational Period:</b> Date From: 08/01/20    Date To: 08/02/20 Time From: 0700    Time To: 0700	<b>3. Branch</b> <b>Division</b> <p style="text-align: center; font-weight: bold;">Supp Repair</p>
----------------------------------------------------------------------------------------	---------------------------------------------------------------------------------------------------------------	-------------------------------------------------------------------------------------------------------

**4. Operations Personnel:** Page 4 of 5

Operations Section Chief: <b>Monty Smith, Jeremi Roesler (T)</b> Branch Director: Division/Group Supervisor: <b>Guy Anderson(12), Jaime Hidalgo(T)(12)</b>	Night Ops: <b>Joshua Bischof</b> Branch Safety: Air Attack: <b>Skye McGregor</b>
------------------------------------------------------------------------------------------------------------------------------------------------------------------	----------------------------------------------------------------------------------------

5. Resources Assigned:		** Resources Below in Bold are 12 Hour **					
Resource Identifier	ALS	LWD	Leader	Personnel	Request #	Hours	Reporting Location
<b>**HEQB SHERFY</b>			<b>SHERFY, CHRISTIAN</b>	1	<b>O-315</b>	<b>0700-1900</b>	<b>ICP</b>
<b>HEQB(T) BENNER</b>			<b>BENNER, NATHAN</b>	1	<b>O-314</b>	<b>0700-1900</b>	<b>ICP</b>
<b>HEQB(T) WIMMER</b>			<b>WIMMER, RYAN</b>	1	<b>O-392</b>	<b>0700-1900</b>	<b>ICP</b>
<b>FSRS TITUS</b>			<b>TITUS, LUCAS</b>	1	<b>O-388</b>	<b>0700-1900</b>	<b>ICP</b>
<b>FSRS(T) MATHEWSON</b>			<b>MATHEWSON, ROSS</b>	1	<b>O-389</b>	<b>0700-1900</b>	<b>ICP</b>
<b>FSRS(T) MCNICHOLAS</b>			<b>MCNICHOLAS, MICHAEL</b>	1	<b>O-391</b>	<b>0700-1900</b>	<b>ICP</b>
<b>FOBS(T) MCBRIDE</b>		8/5	<b>MCBRIDE, IAN</b>	1	<b>O-83</b>	<b>0700-1900</b>	<b>ICP</b>
<b>FOBS WITLOCK</b>						<b>0700-1900</b>	<b>ICP</b>
<b>FOBS RODGERS</b>		7/28	<b>RODGERS, CULLEN</b>	1	<b>O-31</b>	<b>0700-1900</b>	<b>ICP</b>
<b>FOBS SKINNER</b>		7/30	<b>SKINNER, ROY</b>	1	<b>O-84</b>	<b>0700-1900</b>	<b>ICP</b>
<b>FOBS GARCIA</b>		8/5	<b>GARCIA, MARCO</b>	1	<b>O-241</b>	<b>0700-1900</b>	<b>ICP</b>
<b>FOBS MITCHELL</b>			<b>MITCHELL, ADAM</b>	1	<b>O-347</b>	<b>0700-1900</b>	<b>ICP</b>
<b>FOBS HUANG</b>			<b>HUANG, JESSICA</b>	1	<b>O-416</b>	<b>0700-1900</b>	<b>ICP</b>
<b>FOBS MCDANIEL</b>			<b>MCDANIEL, PATRICK</b>	1	<b>O-420</b>	<b>0700-1900</b>	<b>ICP</b>
<b>HEQB WILL</b>			<b>WILL, GARY C</b>	1	<b>O-145</b>	<b>0700-1900</b>	<b>ICP</b>
<b>HEQB (T) GIBSON</b>		7/31	<b>GIBSON, CODY</b>	1	<b>O-198</b>	<b>0700-1900</b>	<b>ICP</b>
<b>HEQB URRUTIA</b>			<b>URRUTIA, FELIX</b>	1	<b>O-372</b>	<b>0700-1900</b>	<b>ICP</b>
<b>HEQB (T) TUCKER</b>		8/3	<b>TUCKER, AARON</b>	1	<b>O-258</b>	<b>0700-1900</b>	<b>ICP</b>

**6. Work Assignments:**  
 Identify and document suppression repair needs.  
 Implement suppression repair plan.

**7. Special Instructions:**  
 All resources 12hr  
 \*\*Resources TENTATIVELY identified for the 3-day IAP 8/3-8/5.

**8. Communications**

Name	Ch	Function	Rx Freq	Rx Tone	Tx Freq	Tx Tone	Notes
NIFC C2	1	COMMAND	170.4500	123.0 (T2)	168.1000	123.0 (T2)	HAYDEN HILL
CDF T32	10	TACTICAL	151.2425	192.8 (T16)	151.2425	192.8 (T16)	SUPP REPAIR
A/G CDF T24	14	TACTICAL	151.3325	192.8 (T16)	151.3325	192.8 (T16)	*** AIR TO GROUND ***
CALCORD	15	MEDICAL	156.0750	156.7 (T6)	156.0750	156.7 (T6)	
GUARD 27	16	EMERGENCY	168.6250		168.6250	110.9 (T1)	EMERGENCY USE ONLY

**9. Prepared by: Name:** David Newell    RESL(T)  
 Signature:

**ICS 204**    Date/Time: 7/31/2020 2200    Personnel Count: 17









# SAFETY MESSAGE

## GOLD

20-CA-LMU-0003917 August 1, 2020 0700-0700



S  
A  
F  
E  
T  
Y

## Situational Awareness

Things are slowing down - stay engaged and empower your subordinates

### Watch Out

- Avoid trees that have been burning for long periods of time
- Fatigue and dehydration

### Mitigation

- Flag these trees and communicate the dangers of fall and snags
- Follow proper work/rest cycle guidelines - drink water early and often

## HEAVY EQUIPMENT

Suppression repair has been assigned to multiple divisions

### Watch Out

- Operators may have limited visibility - maintain appropriate working distance
- Steel tracks can cause sparks when they come in contact with rocks and boulders

### Mitigation

- Make sure that you have eye contact with operator before you approach
- Have an engine or water tender work behind suppression repair equipment

## DEMOB

Prevent accidents and incidents during demobilization

### Watch Out

- Vehicles will be moving in tight areas around Ground Support personnel
- There will be an increase in backing and maneuvering of vehicles in tight spots

### Mitigation

- Provide back-up and spotter personnel - more than one may be required
- Drive cautiously / courteous in and around ICP and demob pedestrian traffic

S  
A  
F  
E  
T  
Y

S  
A  
F  
E  
T  
Y

E  
V  
E  
R  
Y  
O  
N  
E  
S

R  
E  
S  
P  
O  
N  
S  
I  
B  
I  
L  
I  
T  
Y

## COVID-19

*Reduce the exposure and spread by:*

- Wearing a face covering when you're less than 6 feet from others
- Washing your hands frequently, for at least 20-seconds at a time
- ONLY 3 people seated and spaced per table in the dining area

215a



Matt Newberry

CAL FIRE IMT 4 SAFETY



# ICS 205 - INCIDENT RADIO COMMUNICATIONS PLAN

<b>1. Incident Name:</b> GOLD GUARD 27 BANK A		<b>2. Date/Time Prepared</b> Date: 07/31/2020 Time: 1930		<b>3. Operational Period:</b> Date From: 08/01/20 Time From: 0700 Date To: 08/02/20 Time To: 0700					
<b>4. Communications</b>									
Ch#	Function	Name	Assigned To	Rx Freq	Rx Tone	Tx Freq	Tx Tone	Notes	
1	COMMAND	NIFC C2	ALL DIVS	170.4500	123.0 (T2)	168.1000	123.0 (T2)	HAYDEN HILL	
2	COMMAND	NIFC C8	ALL DIVS	169.5375	123.0 (T2)	164.7125	123.0 (T2)	LIKELY MTN	
3	COMMAND	NIFC C9	ALL DIVS	170.0125	123.0 (T2)	165.2500	123.0 (T2)	MANZANITA LO	
4	COMMAND	NIFC C23	ALL DIVS	172.1375	123.0 (T2)	166.9375	123.0 (T2)	WIDOW	
5	COMMAND	NIFC C24	ALL DIVS	170.0500	123.0 (T2)	163.1500	123.0 (T2)	COYOTE PEAK	
6	TACTICAL	CDF T13	DIV. B/D/E/F/G/O	151.3775	192.8 (T16)	151.3775	192.8 (T16)	BRANCH I/III	
7	TACTICAL	CDF T27	DIV R/W/T	159.3075	192.8 (T16)	159.3075	192.8 (T16)	BRANCH V	
8									
9									
10									
11									
12									
13									
14	TACTICAL	A/G CDF T24	ALL DIVS	151.3325	192.8 (T16)	151.3325	192.8 (T16)	*** AIR TO GROUND ***	
15	MEDICAL	CALCORD	ALL DIVS	156.0750	156.7 (T6)	156.0750	156.7 (T6)		
16	EMERGENCY	GUARD 27	EMERGENCY	168.6250		168.6250	110.9 (T1)	EMERGENCY USE ONLY	
17									
18									
19									
20	EMERGENCY	GUARD 27	EMERGENCY	168.6250		168.6250	110.9 (T1)	EMERGENCY USE ONLY	
<b>5. Special Instructions</b>						CURRENT CLONE FOR August 1, 2020 "GUARD 27"			
<b>6. Prepared by (Communications Unit Leader): Name:</b> MIKE HEYFRON - COM1				Signature: <i>mmh</i>		Date/Time: 07/31/20		1930	
ICS 205 - CONTROLLED UNCLASSIFIED INFORMATION/BASIC						NIMS IAP			

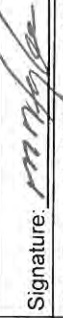
# ICS 205 - INCIDENT RADIO COMMUNICATIONS PLAN

CONTROLLED UNCLASSIFIED INFORMATION/BASIC

<b>1. Incident Name:</b> GOLD GUARD 27 BANK B	<b>2. Date/Time Prepared</b> Date: 07/31/2020 Time: 1930	<b>3. Operational Period:</b> Date To: 08/02/20 Time To: 0700
-----------------------------------------------------	----------------------------------------------------------------	---------------------------------------------------------------------

4. Communications									
Ch#	Function	Name	Assigned To	Rx Freq	Rx Tone	Tx Freq	Tx Tone	Notes	
1	COMMAND	NIFC C2	ALL DIVS	170.4500	123.0 (T2)	168.1000	123.0 (T2)	HAYDEN HILL	
2	COMMAND	NIFC C8	ALL DIVS	169.5375	123.0 (T2)	164.7125	123.0 (T2)	LIKELY MTN	
3	COMMAND	NIFC C9	ALL DIVS	170.0125	123.0 (T2)	165.2500	123.0 (T2)	MANZANITA LO	
4	COMMAND	NIFC C23	ALL DIVS	172.1375	123.0 (T2)	166.9375	123.0 (T2)	WIDOW MTN	
5	COMMAND	NIFC C24	ALL DIVS	170.0500	123.0 (T2)	163.1500	123.0 (T2)	COYOTE PEAK	
6	TACTICAL	VTAC11	Road Group	151.1375	156.7 (T6)	151.1375	156.7 (T6)	Road Group	
7									
8									
9	TACTICAL	VTAC 13	MORNING BRIEFING	158.7375	156.7 (T6)	158.7375	156.7 (T6)		
10	TACTICAL	CDF T32	SUPP REPAIR	151.2425	192.8 (T16)	151.2425	192.8 (T16)	SUPP REPAIR	
11									
12									
13									
14	TACTICAL	A/G CDF T24	ALL DIVS	151.3325	192.8 (T16)	151.3325	192.8 (T16)	*** AIR TO GROUND***	
15	MEDICAL	CALCORD	ALL DIVS	156.0750	156.7 (T6)	156.0750	156.7 (T6)		
16	EMERGENCY	GUARD 27	EMERGENCY	168.6250		168.6250	110.9 (T1)	EMERGENCY USE ONLY	
17									
18									
19									
20	EMERGENCY	GUARD 27	EMERGENCY	168.6250		168.6250	110.9 (T1)	EMERGENCY USE ONLY	

**5. Special Instructions**  
 CURRENT CLONE FOR August 1, 2020 "GUARD 27"

<b>6. Prepared by (Communications Unit Leader):</b> Name: MIKE HEYFRON - COM1	Signature: 
ICS 205 - CONTROLLED UNCLASSIFIED INFORMATION/BASIC	NIMS IAP Date/Time: 07/31/20 1930

# COMS Map

Gold Incident  
CA-LMU-003917



NIFC C23

Widow Mtn. C23

Ground Support

Widow L2 Link

Repeater L2

Beiber Fueling

Intermountain Conservation Camp

DP-70

NIFC C9



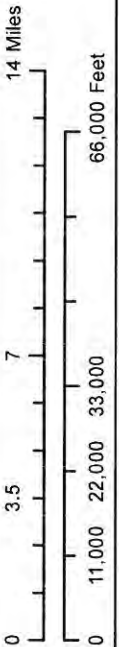
Manzanita Lookout C2

R · R · R · R

NIFC C8

Likely Mtn. C8

Rodgers  
7/31/2020 @ 8:32:01 PM  
NAD 83



- Incident Command Post
- Staging Area
- Drop Point
- Water Source
- Helibase
- Helispot
- Spot Fire
- Other
- Dip Site
- Uncontrolled Fire Edge
- Completed Dozer Line
- Completed Line
- Proposed Dozer Line
- Hand Line

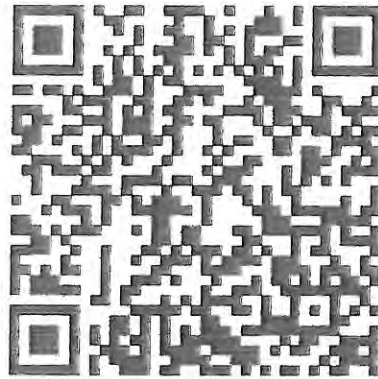




# **INFORMATION**

**(530)505-1165**

Please scan the QR Below for CAL FIRE's Social Media Policy 0691.



## **INCIDENT MAIL**

The PIO Trailer will receive mail/packages shipped to the Incident. Please ensure all mail addressed to the incident follows the format below:

**(YOUR NAME, YOUR ORDER NUMBER)  
C/O GOLD INCIDENT BASE CAMP  
PUBLIC INFORMATION TRAILER  
INTER MOUNTAIN FAIR  
44218 A ST., McARTHUR, CA 96056**

## **LOST AND FOUND**

Any items that are found, please bring them to the PIO Trailer located at the entrance to Base Camp and leave them with PIO staff, please leave your name and contact information and description of items lost so we can attempt to reunite you with your items.



# DMOB

GOLD INCIDENT  
CA – LMU – 003917

- Resources must check-in prior to the Demobilization process.
- In order to be deemed excess, supervisors must submit an ICS 213 to the Resources Unit.
- Resources report to the Demobilization Unit at the times posted on the tentative DMOB list, which is posted around the Incident Base and to the Box account.
- Prior to reporting to DMOB, please return all supplies and equipment.
- Resources will get signatures from the following units:
  - Ground Support (Vehicle Inspection)  
All rental vehicles MUST be inspected
  - Training (If they have a trainee)
  - Documentation
  - Time
  - DMOB
- The following will be done by radio at DMOB
  - Motels
  - Supply
  - Communications



## **Gold Incident**

### **Demobilization Plan**

**CA-LMU-003917**

**July 20<sup>th</sup>, 2020**

Supervisory personnel are to identify resources excess to the needs of the incident at the earliest opportunity. If possible, this should be done within 36 hours in advance of a proposed release by filling out a General Message Form (ICS 213) or Declaration of Excess Resource Sheet. Please include name, request number, date, ETD, ETA, and if available for reassignment. By definition, surplus personnel are available for release if they have met the 2:1 work rest requirements, have rested for a minimum of 8 hours.

Section Chiefs will approve all excess resource lists and the lists will be forwarded to the Resources Unit for processing. Operational resource excess lists shall be prepared by the Planning Section and approved by the Planning Section Chief.

The release priorities are:

- Local Government
- OES
- Out of state resources
- Cooperating Agencies
- Federal Resources
- Contract and private resources
- CAL FIRE Resources

The needs of the incident and off-incident issues may necessitate the modification of these priorities in certain cases.

Information concerning surplus resources will be forwarded to the Redding Expanded Dispatch by the Demobilization Unit (with ECC Support Team at incident). This information will include the resource name, request number, ETD, and ETA. Additionally, the availability of the resource for a new assignment will be provided.

**All government equipment and rental vehicles must be safety inspected prior to release.** Safety inspections shall be coordinated with the Ground Support Unit Leader. All deficiencies will be corrected prior to departure for home unless agency head signs a waiver of inspection.

Surplus resources lists will be posted within the ICP and at the Demobilization Unit with a schedule for resources to pick up the checkout form (ICS-221) at the Demobilization Unit and begin the checkout process. Finance will be the final stop prior to returning to the Demobilization Unit. All resources must complete the demobilization process. Once the ICS-221 has been completed and returned to the Demobilization Unit, the resource will be released from the incident to home, re-assigned to another incident, or held as directed by Northern Region Operations Center (North-Ops).

All Resources will meet any agency-specific and/or DMV rest requirements before demobilizing from the incident. The operator must be rested prior to driving. A resource encountering a delay enroute will contact the appropriate home unit or incident.



## Local Government Resources on CFAA

If you are demobing from an incident and there is no OES AREP on site  
F-42 thru the Incident Finance Section Chief or the Incident Commander  
**One of them must sign your 42's**

The Incident keeps the Pink copy and you keep the Golden.  
The Original and Green you mail to OES Headquarters as per the  
instructions on the front of your F-42

## OES JOB AIDS, FORMS, F-42 SAMPLES AND CFAA AGREEMENT



Questions?

OES Assistant Chief Patrick Titus  
916-634-9225

# CAL FIRE INCIDENT MANAGEMENT TEAM WATER USAGE PLAN

## *California Drought Emergency*

The following shall be considered and implemented by all fire resources as a means to provide maximum efficiencies when utilizing water resources, while minimizing the impacts to private and public water supplies. Accountability shall be maintained for all water supplies that are utilized and care should be applied to ensure proper replacement and/or reimbursement to the supplier/ owner.

### **Fireline personnel- (During mop up operations)**

- Use of Pencil Hose and Garden Nozzles with Shut-Offs.
- Use of Back pumps.
- Dry Mop-up and consolidation of heavy fuels to areas where they can burn out safely
- Locate/ Relocate Firelines to lighter fuels or natural barriers when safe.
- Set up and use portable tanks in anticipation of longer transport times for Water Tenders.
- Use of foams, gels and other water enhancers.
- Evaluate need to mop up in excess of 200 feet from fireline

### **Road Maintenance and Repair-**

- Monitor and water roads only when and where needed.
- Water when most effective (evening and nights).
- Use chemical treatments when available (Magchloride, Omni bind ect).
- Consider use of tertiary or treated water (sp)

### **Aviation Operations-**

- Use of Gels, Foams and Retardants. Set up portable plants.
- Consider Blivits and Pencil hose for interior mop up operations as opposed to numerous bucket drops.
- Establish and use pre-use agreements for existing and known water sources.
- Use large watershed dip sites when able. Minimize use of small, static ponds and lakes.
- Maintain accountability of water used and locations of dip sites.
- Evaluate need for interior bucket drops

### **Private Water Supplies-**

- Notify property owner as early as possible.
- Minimize usage and develop alternative water supplies when and where appropriate.
- Track usage (meter, 214 form) and develop a plan to replace water.
- Make arrangements for reimbursement and damage claims if needed.

### **Public/ Municipal Water Supplies-**

- Notify Agency as soon as possible and request a representative to the incident.
- Identify fill areas and request metering devices. Place on incident map.
- Use alternative or reclaimed water sources when available. Place on incident map.
- Make arrangements for reimbursement and damage claims if needed.

### **Management and Supervision-**

- Use leaders intent and establish Water Conservation as an Management Objective.
- Consider complexity of water use on incidents. Establish a Water Supply Group Supervisor to coordinate additional resources to support the incident needs.
- Complete the Water Usage Report daily and turn in to Finance
- Review this check list and brief daily.



# ***TRAINING SPECIALIST MESSAGE***

**A Training Specialist is available for trainees on the incident.**

**All State, Federal and local government agency Trainees working on Position Task Books will need to register with the Incident Training Specialist in order to receive proper credit for your assignment.**

**The TNSP is located in the building behind Safety.**

***Dennis Martin***

**Training Specialist**

**(707) 479-8421**



**Register using the QR Code**



# CAL-FIRE INCIDENT MANAGEMENT TEAM IV



## 24HR LINE RESOURCE - 2 OPERATOR

EMERGENCY SHIFT TICKET and EVALUATION FORM  
The responsible Government Officer will complete this form each shift.

Contractor Name: **THE BEST DOZERS LLC**  
Operator #1: **FIRST & LAST**  
Operator #2: **FIRST & LAST**  
Request Number: **E-444**

Incident or Project Name: **MISSION**  
Incident Number: **CA-MMU-018115**  
Request Number: **E-444**

Equipment Make: **1999 PETERBILT 379**  
Equipment Model / Type: **TRANSPORT 18 WHEEL**  
License Number: **12345A1**

Operator Furnished By:  Contractor  Government  
Operating Supplies Furnished By:  Contractor  Government

Equipment Status:  Inspected  Under Agreement  
Released by Government:  Withdrawn by Contractor

Remarks/Comments: **2 OPERATORS**

Date Mo / Day	Start	Stop	Work	Days / Miles
9/5	0701	2400	17	DIV X
9/6	0001	0700	7	DIV X

Vendor Rating: **NO DAMAGE / NO CLAIM**

Govt. Rep. Name and Position - PRINT: **Print Your Name**  
Govt. Rep. Signature: **Yous Signature**  
Contractor Signature: **John Smith**  
Date: **9/6/17** Time: **0700**

\* NOTE: any rating of POOR requires an explanation in Comment Section.  
\*\* Final evaluation or for more documentation, use a CALFIRE Form 230 or equivalent.

## 24HR / 12HR TRANSITION SHIFT TICKET

EMERGENCY SHIFT TICKET and EVALUATION FORM  
The responsible Government Officer will complete this form each shift.

Contractor Name: **THE BEST DOZERS LLC**  
Operator #1: **FIRST & LAST**  
Operator #2: **FIRST & LAST**  
Request Number: **E-444**

Incident or Project Name: **MISSION**  
Incident Number: **CA-MMU-018115**  
Request Number: **E-444**

Equipment Make: **1999 PETERBILT 379**  
Equipment Model / Type: **TRANSPORT 18 WHEEL**  
License Number: **12345A1**

Operator Furnished By:  Contractor  Government  
Operating Supplies Furnished By:  Contractor  Government

Equipment Status:  Inspected  Under Agreement  
Released by Government:  Withdrawn by Contractor

Remarks/Comments: **2 OPERATORS**

Date Mo / Day	Start	Stop	Work	Days / Miles
9/6	0701	1900	12	DIV X
9/6	1901	2400	5	OFF SHIFT

Vendor Rating: **NO DAMAGE / NO CLAIM**

Govt. Rep. Name and Position - PRINT: **Print Your Name**  
Govt. Rep. Signature: **Yous Signature**  
Contractor Signature: **John Smith**  
Date: **9/5/17** Time: **1900**

\* NOTE: any rating of POOR requires an explanation in Comment Section.  
\*\* Final evaluation or for more documentation, use a CALFIRE Form 230 or equivalent.

## 12HR LINE RESOURCE - 1 OPERATOR

EMERGENCY SHIFT TICKET and EVALUATION FORM  
The responsible Government Officer will complete this form each shift.

Contractor Name: **THE BEST DOZERS LLC**  
Operator #1: **FIRST & LAST**  
Operator #2: **FIRST & LAST**  
Request Number: **E-555**

Incident or Project Name: **MISSION**  
Incident Number: **CA-MMU-018115**  
Request Number: **E-555**

Equipment Make: **2004 CAT**  
Equipment Model / Type: **D6N / TYPE II E**  
License Number: **MMU-0000015955**

Operator Furnished By:  Contractor  Government  
Operating Supplies Furnished By:  Contractor  Government

Equipment Status:  Inspected  Under Agreement  
Released by Government:  Withdrawn by Contractor

Remarks/Comments: **1 OPERATOR**

Date Mo / Day	Start	Stop	Work	Days / Miles
9/7	0001	0700	7	OFF SHIFT
9/7	0701	1900	12	DIV X
9/7	1901	2400	5	OFF SHIFT

Vendor Rating: **NO DAMAGE / NO CLAIM**

Govt. Rep. Name and Position - PRINT: **Print Your Name**  
Govt. Rep. Signature: **Yous Signature**  
Contractor Signature: **John Smith**  
Date: **9/5/17** Time: **1900**

\* NOTE: any rating of POOR requires an explanation in Comment Section.  
\*\* Final evaluation or for more documentation, use a CALFIRE Form 230 or equivalent.

## 24HR IN CAMP RESOURCE

EMERGENCY SHIFT TICKET and EVALUATION FORM  
The responsible Government Officer will complete this form each shift.

Contractor Name: **THE BEST CAMP LLC**  
Operator #1: **FIRST & LAST**  
Operator #2: **FIRST & LAST**  
Request Number: **E-333**

Incident or Project Name: **MISSION**  
Incident Number: **CA-MMU-018115**  
Request Number: **E-333**

Equipment Make: **TENT**  
Equipment Model / Type: **WESTERN SHELTER 19X35**  
License Number: **MMU-0000015950**

Operator Furnished By:  Contractor  Government  
Operating Supplies Furnished By:  Contractor  Government

Equipment Status:  Inspected  Under Agreement  
Released by Government:  Withdrawn by Contractor

Remarks/Comments: **(4) TENTS, CANOPY WSIDES**

Date Mo / Day	Start	Stop	Work	Days / Miles
9/2	0001	2400	24	ICP

Vendor Rating: **FLOOR & INSULATED ROOF 570sq ft**  
**NO DAMAGE / NO CLAIM**

Govt. Rep. Name and Position - PRINT: **Print Your Name**  
Govt. Rep. Signature: **Yous Signature**  
Contractor Signature: **John Smith**  
Date: **9/5/17** Time: **1900**

\* NOTE: any rating of POOR requires an explanation in Comment Section.  
\*\* Final evaluation or for more documentation, use a CALFIRE Form 230 or equivalent.



1. Equipment Parking
2. Shower & Laundry
3. Sleepers
4. Tent Sleeping
5. PIO
6. Transport Parking
7. Supply
8. Check In, Time & Finance
9. Briefing
10. MKU Dining
11. Water & Lunch
12. Overhead Parking
13. CCC Sleeping
14. Transportation
15. Medical
16. Safety
17. CDCR Sleeping
18. CDCR Parking
19. Overflow Parking
20. Cooling Station
21. Logistics
22. CDCR Laundry/Showers
23. Ordering
24. Overhead/Overflow Parking
25. Radios
26. OES
27. Hotels
28. Fire Dawg Clerical
29. Liaison
30. Training Spec
31. Suppression Repair



# ICP Map

Gold Incident

CA-LMU-003917



**EXTREME**

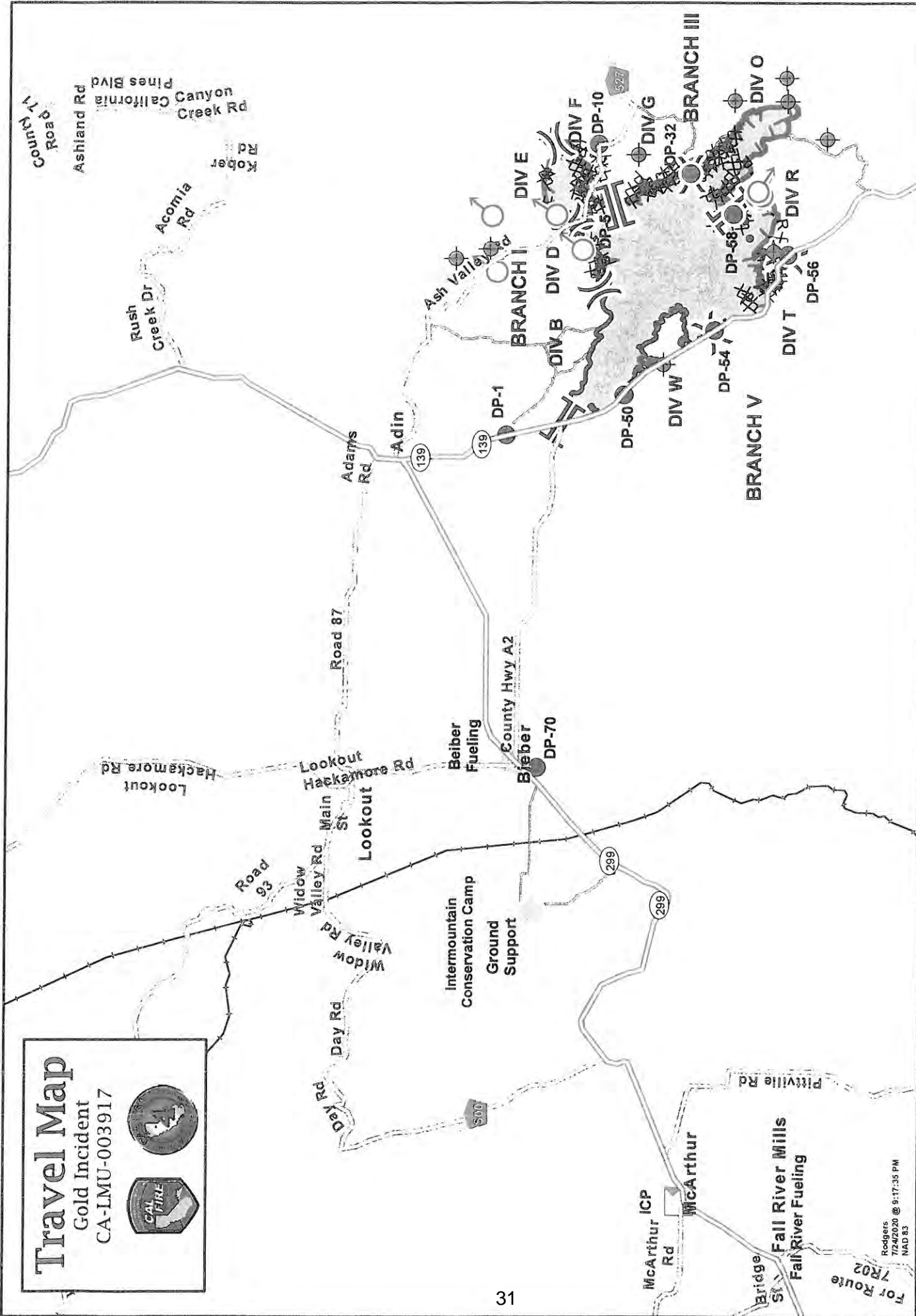
**HAZARD**

**NO PARKING**



# Travel Map

Gold Incident  
CA-LMU-003917



■ Incident Command Post    W Water Source    ○ Spot Fire    ⌂ Uncontrolled Fire Edge    H Hand Line  
S Staging Area    H Helibase    ○ Other    ⌘ Completed Dozer Line  
● Drop Point    ● Helispot    ○ Dip Site    — Completed Line    ⊗ Proposed Dozer Line

0 3 6 12 Miles  
 0 10,000 20,000 30,000 60,000 Feet

Rodgers  
 7/24/2020 @ 9:17:35 PM  
 NAD 83

# Intermountain Ground Support Repair Shop Map



### From ICP to Ground Support:

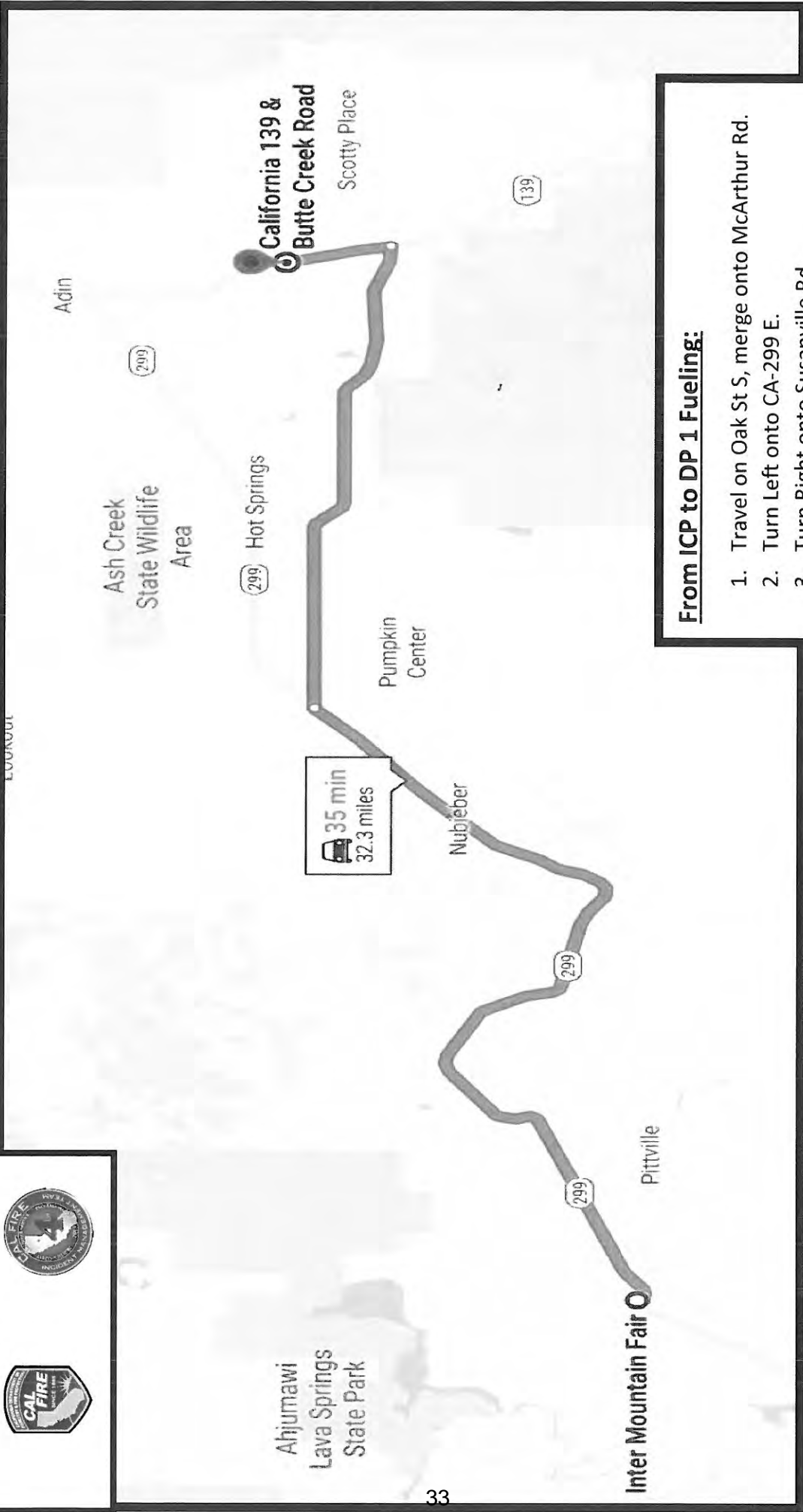
1. Travel on Oak St S, merge onto McArthur Rd.
2. Turn Left onto CA-299 E.
3. Turn left onto Kramer Rd
4. 1 mile Turn Left
5. 1 ½ miles turn left onto Foothill Rd

# Fuel Location Map

## DP 1



LOOKOUT



Ahjumawi  
Lava Springs  
State Park

Ash Creek  
State Wildlife  
Area

Adin

Hot Springs

Pumpkin  
Center

Nubleber

Pittville

California 139 &  
Butte Creek Road  
Scotty Place

35 min  
32.3 miles

### From ICP to DP 1 Fueling:

1. Travel on Oak St S, merge onto McArthur Rd.
2. Turn Left onto CA-299 E.
3. Turn Right onto Susanville Rd
4. Turn left onto CA-139 N
5. Turn Right onto Butte Creek Rd

# Fuel Location Map Fall River



## From ICP to Fall River Fueling:

1. Travel on Oak St S, merge onto McArthur Rd.
2. Turn right onto CA-299 E.
3. Turn right onto Glenburn Rd.
4. Turn right into Fall River Fueling, 24665 Glenburn Rd.

Rodgers  
7/22/2020 @ 7:31:17 PM  
NAD 83

0 0.5 1 2 Miles

0 2,500 5,000 10,000 Feet

Incident Command Post  
 Staging Area  
 Drop Point  
 Water Source  
 Helibase  
 Helispot  
 Uncontrolled Fire Edge  
 Completed Dozer Line  
 Completed Line  
 Hand Line



