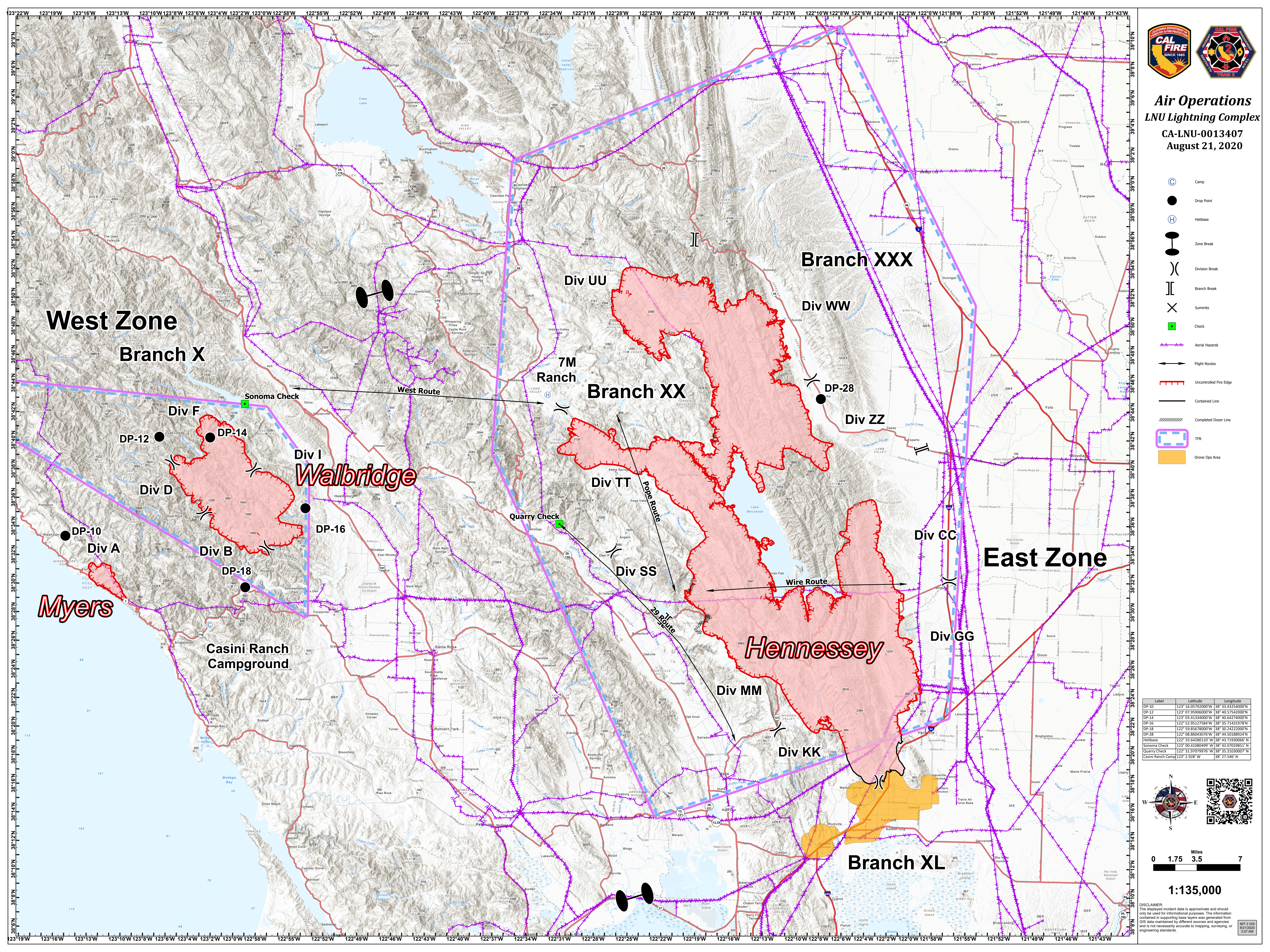




Air Operations
LNU Lightning Complex
 CA-LNU-0013407
 August 21, 2020

- Camp
- Drop Point
- Helibase
- Zone Break
- Division Break
- Branch Break
- Summits
- Check
- Aerial Hazards
- Flight Routes
- Uncontrolled Fire Edge
- Contained Line
- Completed Dozer Line
- TFR
- Drone Ops Area



Label	Latitude	Longitude
DP-10	123° 16.05792000' W	38° 33.43254000' N
DP-12	123° 07.95960000' W	38° 40.57542000' N
DP-14	123° 03.41334000' W	38° 40.54742000' N
DP-16	122° 52.95127584' W	38° 35.71451978' N
DP-18	122° 59.85678000' W	38° 30.24222000' N
DP-28	122° 08.86043076' W	38° 44.50188924' N
Helibase	122° 33.64280110' W	38° 43.71930066' N
Sonoma Check	123° 00.41080499' W	38° 43.07028851' N
Quarry Check	122° 31.97079976' W	38° 35.31030007' N
Casini Ranch Camp	123° 2.928' W	38° 27.546' N

North arrow and scale bar.

Miles: 0, 1.75, 3.5, 7

1:135,000

DISCLAIMER: The displayed incident data is approximate and should only be used for informational purposes. The information contained in supporting base layers was generated from GIS data maintained by different sources and agencies and is not necessarily accurate to mapping, surveying, or engineering standards.