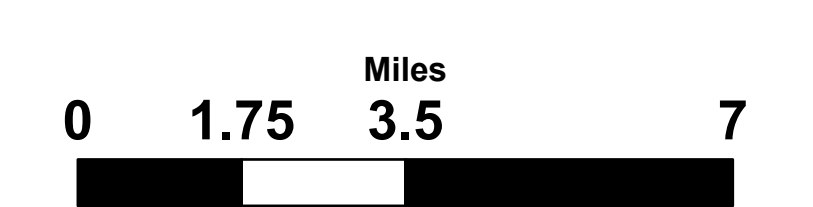
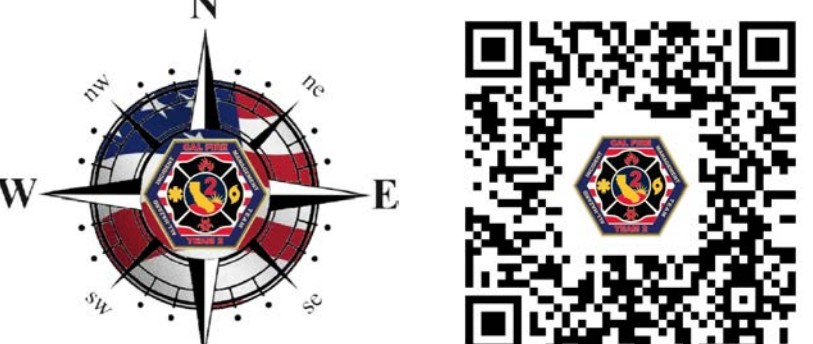




Air Operations LNU Lightning Complex

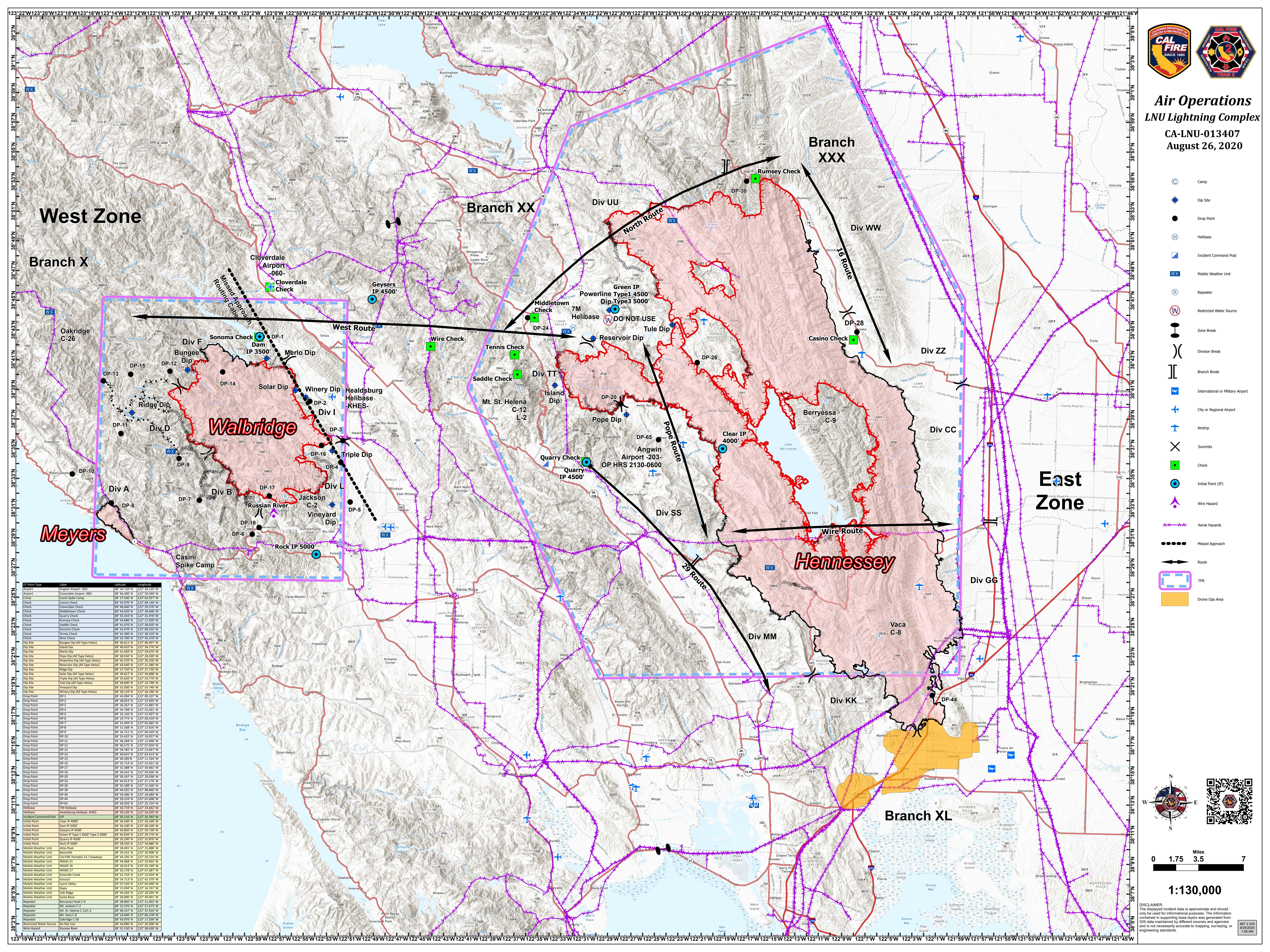
CA-LNU-013407
August 26, 2020

- Camp
- Dip Site
- Drop Point
- Helibase
- Incident Command Post
- Mobile Weather Unit
- Repeater
- Restricted Water Source
- Zone Break
- Division Break
- Branch Break
- International or Military Airport
- City or Regional Airport
- Airstrip
- Summits
- Check
- Initial Point (IP)
- Wire Hazard
- Aerial Hazards
- Missed Approach
- Route
- TFR
- Drone Ops Area



1:130,000

DISCLAIMER: The displayed incident data is approximate and should only be used for informational purposes. The information contained in a supporting base layer was generated from GIS data maintained by different sources and agencies and is not necessarily accurate to mapping, surveying, or engineering standards.



IC Point Type	Label	Latitude	Longitude
Airport	Cloverdale Airport -060	38° 46.500' N	122° 59.340' W
Camp	Casini Spike Camp	38° 27.540' N	122° 03.020' W
Check	Casini Check	38° 43.950' N	122° 09.140' W
Check	Cloverdale Check	38° 46.400' N	122° 59.570' W
Check	Middletown Check	38° 42.500' N	122° 36.500' W
Check	Quarry Check	38° 53.350' N	122° 31.970' W
Check	Rumsey Check	38° 54.600' N	122° 17.930' W
Check	Saddle Check	38° 43.000' N	122° 38.020' W
Check	Sonoma Check	38° 43.000' N	122° 00.430' W
Check	Renwick Check	38° 42.900' N	122° 38.330' W
Check	Wire Check	38° 42.900' N	122° 45.920' W
Dip Site	Bungee Dip (All Type Helos)	38° 40.411' N	122° 06.407' W
Dip Site	Oakridge Dip	38° 42.710' N	122° 33.770' W
Dip Site	Merilo Dip	38° 42.000' N	122° 55.070' W
Dip Site	Pope Dip (All Type Helos)	38° 38.500' N	122° 28.500' W
Dip Site	Powerline Dip (All Type Helos)	38° 43.640' N	122° 30.350' W
Dip Site	Reservoir Dip (All Type Helos)	38° 43.640' N	122° 31.580' W
Dip Site	Ridge Dip	38° 37.750' N	122° 37.750' W
Dip Site	Solar Dip (All Type Helos)	38° 37.750' N	122° 37.750' W
Dip Site	Triple Dip (All Type Helos)	38° 35.620' N	122° 53.770' W
Dip Site	Tule Dip (All Type Helos)	38° 44.800' N	122° 24.700' W
Dip Site	Vineyard Dip	38° 31.900' N	122° 51.740' W
Dip Site	Winery Dip (All Type Helos)	38° 39.130' N	122° 56.130' W
Drop Point	DP-1	38° 43.000' N	122° 55.830' W
Drop Point	DP-2	38° 36.200' N	122° 52.880' W
Drop Point	DP-3	38° 34.700' N	122° 53.530' W
Drop Point	DP-4	38° 32.150' N	122° 52.080' W
Drop Point	DP-5	38° 29.740' N	122° 00.420' W
Drop Point	DP-6	38° 31.900' N	122° 05.050' W
Drop Point	DP-7	38° 31.900' N	122° 12.620' W
Drop Point	DP-8	38° 31.900' N	122° 16.550' W
Drop Point	DP-9	38° 30.240' N	122° 58.850' W
Drop Point	DP-10	38° 30.240' N	122° 59.830' W
Drop Point	DP-11	38° 30.240' N	122° 59.830' W
Drop Point	DP-12	38° 30.240' N	122° 59.830' W
Drop Point	DP-13	38° 30.240' N	122° 59.830' W
Drop Point	DP-14	38° 30.240' N	122° 59.830' W
Drop Point	DP-15	38° 30.240' N	122° 59.830' W
Drop Point	DP-16	38° 30.240' N	122° 59.830' W
Drop Point	DP-17	38° 30.240' N	122° 59.830' W
Drop Point	DP-18	38° 30.240' N	122° 59.830' W
Drop Point	DP-19	38° 30.240' N	122° 59.830' W
Drop Point	DP-20	38° 30.240' N	122° 59.830' W
Drop Point	DP-21	38° 30.240' N	122° 59.830' W
Drop Point	DP-22	38° 30.240' N	122° 59.830' W
Drop Point	DP-23	38° 30.240' N	122° 59.830' W
Drop Point	DP-24	38° 30.240' N	122° 59.830' W
Drop Point	DP-25	38° 30.240' N	122° 59.830' W
Drop Point	DP-26	38° 30.240' N	122° 59.830' W
Drop Point	DP-27	38° 30.240' N	122° 59.830' W
Drop Point	DP-28	38° 30.240' N	122° 59.830' W
Drop Point	DP-29	38° 30.240' N	122° 59.830' W
Drop Point	DP-30	38° 30.240' N	122° 59.830' W
Drop Point	DP-31	38° 30.240' N	122° 59.830' W
Drop Point	DP-32	38° 30.240' N	122° 59.830' W
Drop Point	DP-33	38° 30.240' N	122° 59.830' W
Drop Point	DP-34	38° 30.240' N	122° 59.830' W
Drop Point	DP-35	38° 30.240' N	122° 59.830' W
Drop Point	DP-36	38° 30.240' N	122° 59.830' W
Drop Point	DP-37	38° 30.240' N	122° 59.830' W
Drop Point	DP-38	38° 30.240' N	122° 59.830' W
Drop Point	DP-39	38° 30.240' N	122° 59.830' W
Drop Point	DP-40	38° 30.240' N	122° 59.830' W
Drop Point	DP-41	38° 30.240' N	122° 59.830' W
Drop Point	DP-42	38° 30.240' N	122° 59.830' W
Drop Point	DP-43	38° 30.240' N	122° 59.830' W
Drop Point	DP-44	38° 30.240' N	122° 59.830' W
Drop Point	DP-45	38° 30.240' N	122° 59.830' W
Drop Point	DP-46	38° 30.240' N	122° 59.830' W
Drop Point	DP-47	38° 30.240' N	122° 59.830' W
Drop Point	DP-48	38° 30.240' N	122° 59.830' W
Drop Point	DP-49	38° 30.240' N	122° 59.830' W
Drop Point	DP-50	38° 30.240' N	122° 59.830' W
Drop Point	DP-51	38° 30.240' N	122° 59.830' W
Drop Point	DP-52	38° 30.240' N	122° 59.830' W
Drop Point	DP-53	38° 30.240' N	122° 59.830' W
Drop Point	DP-54	38° 30.240' N	122° 59.830' W
Drop Point	DP-55	38° 30.240' N	122° 59.830' W
Drop Point	DP-56	38° 30.240' N	122° 59.830' W
Drop Point	DP-57	38° 30.240' N	122° 59.830' W
Drop Point	DP-58	38° 30.240' N	122° 59.830' W
Drop Point	DP-59	38° 30.240' N	122° 59.830' W
Drop Point	DP-60	38° 30.240' N	122° 59.830' W
Drop Point	DP-61	38° 30.240' N	122° 59.830' W
Drop Point	DP-62	38° 30.240' N	122° 59.830' W
Drop Point	DP-63	38° 30.240' N	122° 59.830' W
Drop Point	DP-64	38° 30.240' N	122° 59.830' W
Drop Point	DP-65	38° 30.240' N	122° 59.830' W
Drop Point	DP-66	38° 30.240' N	122° 59.830' W
Drop Point	DP-67	38° 30.240' N	122° 59.830' W
Drop Point	DP-68	38° 30.240' N	122° 59.830' W
Drop Point	DP-69	38° 30.240' N	122° 59.830' W
Drop Point	DP-70	38° 30.240' N	122° 59.830' W
Drop Point	DP-71	38° 30.240' N	122° 59.830' W
Drop Point	DP-72	38° 30.240' N	122° 59.830' W
Drop Point	DP-73	38° 30.240' N	122° 59.830' W
Drop Point	DP-74	38° 30.240' N	122° 59.830' W
Drop Point	DP-75	38° 30.240' N	122° 59.830' W
Drop Point	DP-76	38° 30.240' N	122° 59.830' W
Drop Point	DP-77	38° 30.240' N	122° 59.830' W
Drop Point	DP-78	38° 30.240' N	122° 59.830' W
Drop Point	DP-79	38° 30.240' N	122° 59.830' W
Drop Point	DP-80	38° 30.240' N	122° 59.830' W
Drop Point	DP-81	38° 30.240' N	122° 59.830' W
Drop Point	DP-82	38° 30.240' N	122° 59.830' W
Drop Point	DP-83	38° 30.240' N	122° 59.830' W
Drop Point	DP-84	38° 30.240' N	122° 59.830' W
Drop Point	DP-85	38° 30.240' N	122° 59.830' W
Drop Point	DP-86	38° 30.240' N	122° 59.830' W
Drop Point	DP-87	38° 30.240' N	122° 59.830' W
Drop Point	DP-88	38° 30.240' N	122° 59.830' W
Drop Point	DP-89	38° 30.240' N	122° 59.830' W
Drop Point	DP-90	38° 30.240' N	122° 59.830' W
Drop Point	DP-91	38° 30.240' N	122° 59.830' W
Drop Point	DP-92	38° 30.240' N	122° 59.830' W
Drop Point	DP-93	38° 30.240' N	122° 59.830' W
Drop Point	DP-94	38° 30.240' N	122° 59.830' W
Drop Point	DP-95	38° 30.240' N	122° 59.830' W
Drop Point	DP-96	38° 30.240' N	122° 59.830' W
Drop Point	DP-97	38° 30.240' N	122° 59.830' W
Drop Point	DP-98	38° 30.240' N	122° 59.830' W
Drop Point	DP-99	38° 30.240' N	122° 59.830' W
Drop Point	DP-100	38° 30.240' N	122° 59.830' W
Drop Point	DP-101	38° 30.240' N	122° 59.830' W
Drop Point	DP-102	38° 30.240' N	122° 59.830' W
Drop Point	DP-103	38° 30.240' N	122° 59.830' W
Drop Point	DP-104	38° 30.240' N	122° 59.830' W
Drop Point	DP-105	38° 30.240' N	122° 59.830' W
Drop Point	DP-106	38° 30.240' N	122° 59.830' W
Drop Point	DP-107	38° 30.240' N	122° 59.830' W
Drop Point	DP-108	38° 30.240' N	122° 59.830' W
Drop Point	DP-109	38° 30.240' N	122° 59.830' W
Drop Point	DP-110	38° 30.240' N	122° 59.830' W
Drop Point	DP-111	38° 30.240' N	122° 59.830' W
Drop Point	DP-112	38° 30.240' N	122° 59.830' W
Drop Point	DP-113	38° 30.240' N	122° 59.830' W
Drop Point	DP-114	38° 30.240' N	122° 59.830' W
Drop Point	DP-115	38° 30.240' N	122° 59.830' W
Drop Point	DP-116	38° 30.240' N	122° 59.830' W
Drop Point	DP-117	38° 30.240' N	122° 59.830' W
Drop Point	DP-118	38° 30.240' N	122° 59.830' W
Drop Point	DP-119	38° 30.240' N	122° 59.830' W
Drop Point	DP-120	38° 30.240' N	122° 59.830' W
Drop Point	DP-121	38° 30.240' N	122° 59.830' W
Drop Point	DP-122	38° 30.240' N	122° 59.830' W
Drop Point	DP-123	38° 30.240' N	122° 59.830' W
Drop Point	DP-124	38° 30.240' N	122° 59.830' W
Drop Point	DP-125	38° 30.240' N	122° 59.830' W
Drop Point	DP-126	38° 30.240' N	122° 59.830' W
Drop Point	DP-127	38° 30.240' N	122° 59.830' W
Drop Point	DP-128	38° 30.240' N	122° 59.830' W
Drop Point	DP-129	38° 30.240' N	122° 59.830' W
Drop Point	DP-130	38° 30.240' N	122° 59.830' W
Drop Point	DP-131	38° 30.240' N	122° 59.830' W
Drop Point	DP-132	38° 30.240' N	122° 59.830' W
Drop Point	DP-133	38° 30.240' N	122° 59.830' W
Drop Point	DP-134	38° 30.240' N	122° 59.830' W
Drop Point	DP-135	38° 30.240' N	122° 59.830' W
Drop Point	DP-136	38° 30.240' N	122° 59.830' W
Drop Point	DP-137	38° 30.240' N	122° 59.830' W
Drop Point	DP-138	38° 30.240' N	122° 59.830' W
Drop Point	DP-139	38° 30.240' N	122° 59.830' W
Drop Point	DP-140	38° 30.240' N	122° 59.830' W
Drop Point	DP-141	38° 30.240' N	122° 59.830' W
Drop Point	DP-142	38° 30.240' N	122° 59.830' W
Drop Point	DP-143	38° 30.240' N	122° 59.830' W
Drop Point	DP-144	38° 30.240' N	122° 59.830' W
Drop Point	DP-145	38° 30.240' N	122° 59.830' W
Drop Point	DP-146	38° 30.240' N	122° 59.830' W
Drop Point	DP-147	38° 30.240' N	122° 59.830' W
Drop Point	DP-148	38° 30.240' N	122° 59.830' W
Drop Point	DP-149	38° 30.240' N	122° 59.830' W
Drop Point	DP-150	38° 30.240' N	122° 59.830' W
Drop Point	DP-151	38° 30.240' N	122° 59.830' W
Drop Point	DP-152	38° 30.240' N	122° 59.830' W
Drop Point	DP-153	38° 30.240' N	122° 59.830' W
Drop Point	DP-154	38° 30.240' N	122° 59.830' W
Drop Point	DP-155	38° 30.240' N	122° 59.830' W
Drop Point	DP-156	38° 30.240' N	122° 59.830' W
Drop Point	DP-157	38° 30.240' N	122° 59.830' W
Drop Point	DP-158	38° 30.240' N	122° 59.830' W
Drop Point	DP-159	38° 30.240' N	122° 59.830' W
Drop Point	DP-160	38° 30.240' N	122° 59.830' W
Drop Point	DP-161	38° 30.240' N	122° 59.830' W
Drop Point	DP-162	38° 30.240' N	122° 59.830' W
Drop Point	DP-163	38° 30.240' N	122° 59.830' W
Drop Point	DP-164	38° 30.240' N	122° 59.830' W
Drop Point	DP-165	38° 30.240' N	122° 59.830' W
Drop Point	DP-166	38° 30.240' N	122° 59.830' W
Drop Point	DP-167	38° 30.240' N	122° 59.830' W
Drop Point	DP-168	38° 30.240' N	122° 59.830' W
Drop Point	DP-169	38° 30.240' N	122° 59.830' W
Drop Point	DP-170	38° 30.240' N	122° 59.830' W
Drop Point	DP-171	38° 30.240' N	122° 59.830' W
Drop Point	DP-172	38° 30.240' N	122° 59.830' W
Drop Point	DP-173	38° 30.240' N	122° 59.830' W
Drop Point	DP-174	38° 30.240' N	122° 59.830' W
Drop Point	DP-175	38° 30.240' N	122° 59.830' W
Drop Point	DP-176	38° 30.240' N	122° 59.830' W
Drop Point	DP-177	38° 30.240' N	122° 59.830' W
Drop Point	DP-178	38° 30.240' N	122° 59.830' W
Drop Point	DP-179	38° 30.240' N	122° 59.830' W
Drop Point	DP-180	38° 30.240' N	122° 59.830