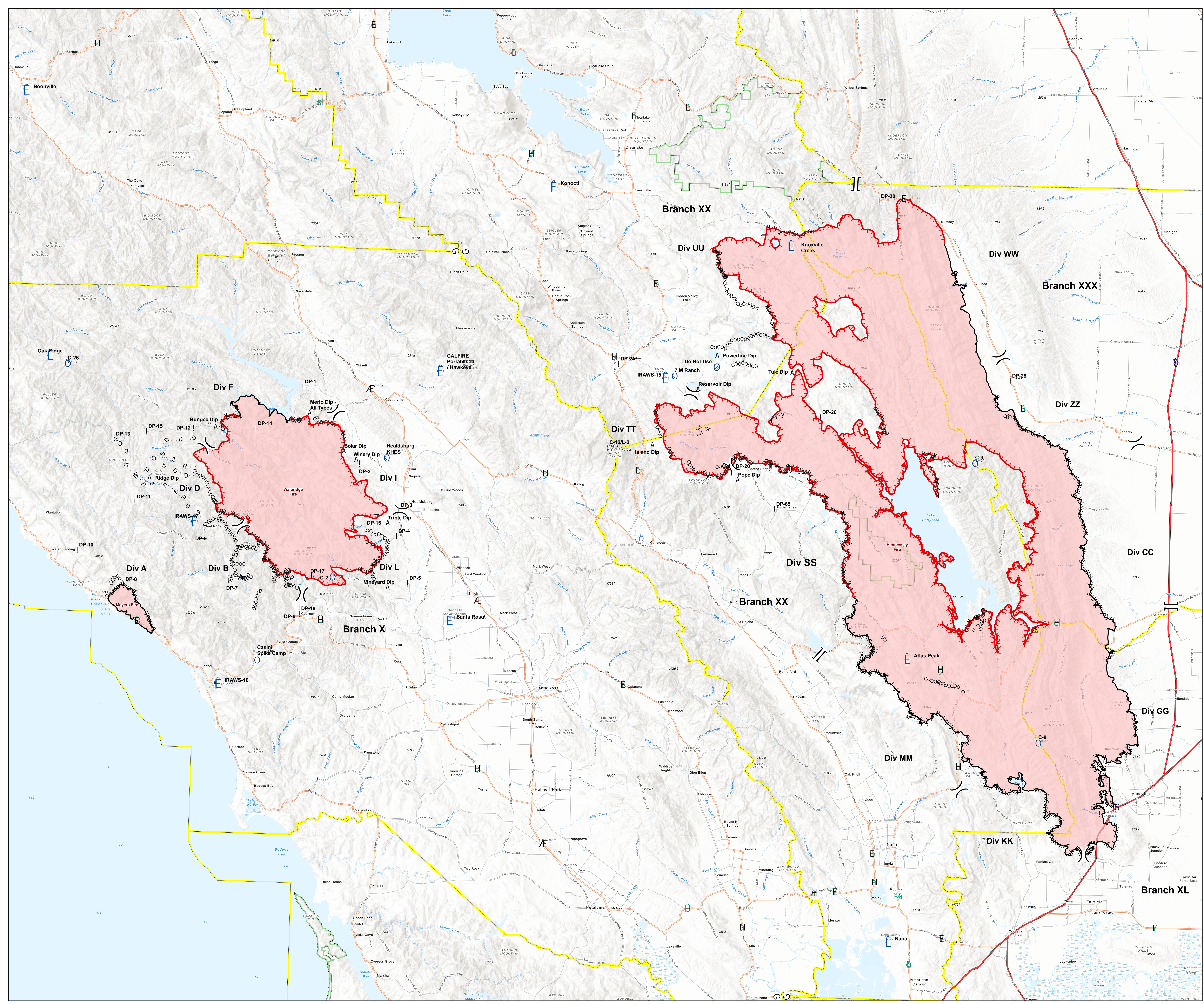




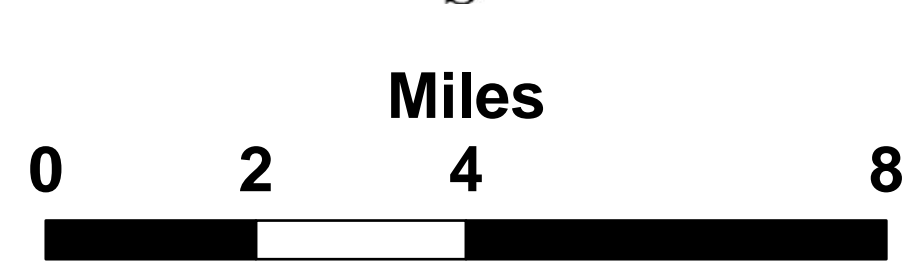
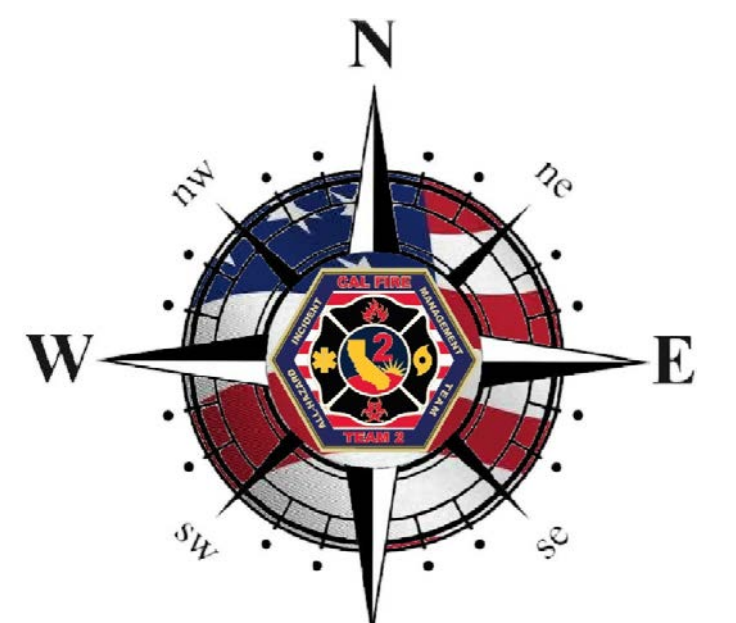
Transportation

LNU Lightning Complex
CA-LNU-013407
August 26, 2020
0700-0700



○	Camp	—	Continued Line
A	Dip Site	○○○○○○	Completed Ditch Line
!	Ditch Point	2 2 2	Completed Hand Line
⊙	Helibase	y:y:y:2	Road as Completed Line
⊙	Incident Command Post	D D	Proposed Ditch Line
⊙	Mobile Weather Unit	—	Wildfire Daily Fire Perimeter
⊙	Repeater	—	Interstate
⊙	Restricted Water Source	—	Highway or ramp
⊙	Zone Break	—	Local or 400' road
⊙	Division Break	—	County Boundary
⊙	Branch Break	—	Municipality
⊙	Uncontrolled Fire Edge	—	Altitude
⊙		▲	One-Lane Only, OK for trucks

Vicinity Map



1:115,789
Datum: NAD 83

DISCLAIMER: The displayed incident data is approximate and should only be used for informational purposes. The information contained in this report was generated from GIS data maintained by different sources and agencies and is not necessarily accurate to mapping, surveying, or engineering standards.

INT 2
August 25, 2020
22:28 hrs