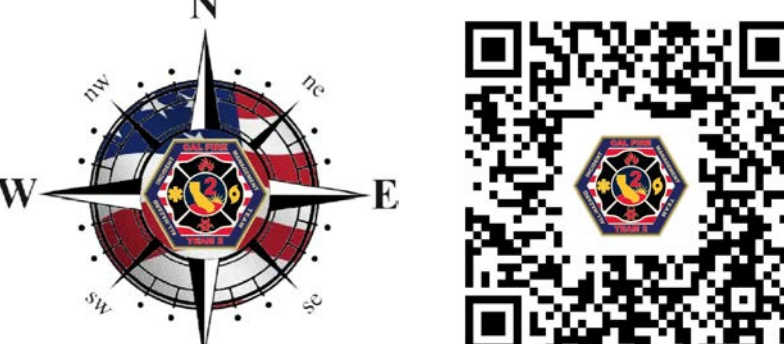




Air Operations
LNU Lightning Complex
CA-LNU-013407
August 31, 2020

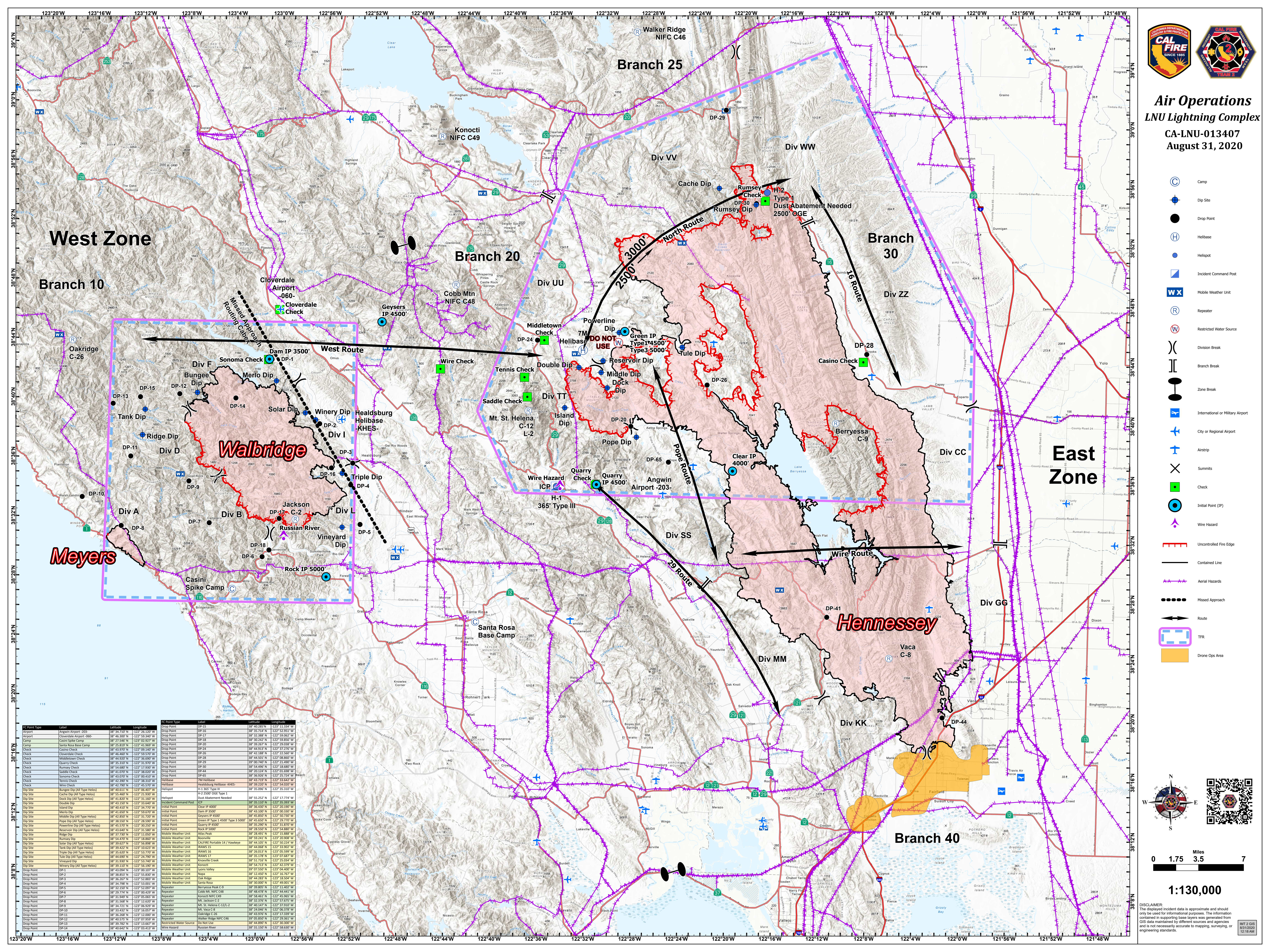
- Camp
- Dip Site
- Drop Point
- Helibase
- Helispot
- Incident Command Post
- Mobile Weather Unit
- Repeater
- Restricted Water Source
- Division Break
- Branch Break
- Zone Break
- International or Military Airport
- City or Regional Airport
- Airstrip
- Summits
- Check
- Initial Point (IP)
- Wire Hazard
- Uncontrolled Fire Edge
- Contained Line
- Aerial Hazards
- Missed Approach
- Route
- TFR
- Drone Ops Area



0 1.75 3.5 7
Miles

1:130,000

DISCLAIMER: The depicted incident data is approximate and should only be used for informational purposes. The information contained in this supporting base layer was generated from GIS data maintained by different sources and agencies and is not necessarily accurate to mapping, surveying, or engineering standards.



IC Point Type	Label	Latitude	Longitude
Drop Point	DP-15	38° 40.285' N	122° 31.334' W
Drop Point	DP-16	38° 39.714' N	122° 31.953' W
Drop Point	DP-17	38° 46.300' N	122° 58.340' W
Drop Point	DP-18	38° 30.242' N	122° 58.866' W
Drop Point	DP-19	38° 39.247' N	122° 59.388' W
Drop Point	DP-24	38° 43.937' N	122° 59.141' W
Drop Point	DP-25	38° 42.913' N	122° 37.270' W
Drop Point	DP-26	38° 42.788' N	122° 37.660' W
Drop Point	DP-28	38° 44.501' N	122° 08.860' W
Drop Point	DP-29	38° 50.740' N	122° 31.930' W
Drop Point	DP-30	38° 54.400' N	122° 31.680' W
Drop Point	DP-44	38° 40.124' N	122° 01.688' W
Drop Point	DP-45	38° 39.247' N	122° 25.724' W
Drop Point	DP-46	38° 43.737' N	122° 31.842' W
Helibase	Healdsburg Helibase KHES	38° 38.230' N	122° 54.020' W
Helispot	H-1 365° Type III	38° 55.096' N	122° 35.210' W
Helispot	Dust Abatement Needed	38° 55.202' N	122° 37.774' W
Initial Point	Clear IP 4000'	38° 36.430' N	122° 20.190' W
Initial Point	Dam IP 3500'	38° 43.100' N	122° 00.390' W
Initial Point	Green IP Type 1 4500'	38° 43.800' N	122° 55.760' W
Initial Point	Green IP Type 3 5000'	38° 43.600' N	122° 29.770' W
Initial Point	Quarry IP 4500'	38° 50.200' N	122° 34.880' W
Initial Point	Rock IP 5000'	38° 35.500' N	122° 34.880' W
Mobile Weather Unit	Atlas Peak	38° 48.491' N	122° 15.888' W
Mobile Weather Unit	Bloomer	38° 50.200' N	121° 37.000' W
Mobile Weather Unit	CAL FIRE Portable 14 / Haneskey	38° 44.105' N	122° 50.224' W
Mobile Weather Unit	BRAWS 15	38° 44.068' N	122° 33.907' W
Mobile Weather Unit	BRAWS 16	38° 45.013' N	122° 55.599' W
Mobile Weather Unit	BRAWS 17	38° 45.718' N	122° 07.887' W
Mobile Weather Unit	Kenwood Creek	38° 51.718' N	122° 37.594' W
Mobile Weather Unit	Kenwood	38° 51.718' N	122° 42.374' W
Mobile Weather Unit	Lorna Valley	38° 50.500' N	122° 04.400' W
Mobile Weather Unit	Napa	38° 42.849' N	122° 37.767' W
Mobile Weather Unit	Oak Ridge	38° 44.283' N	121° 38.054' W
Mobile Weather Unit	Santa Rosa	38° 50.000' N	122° 40.001' W
Mobile Weather Unit	Berryessa Peak C-9	38° 48.800' N	122° 31.300' W
Repeater	Healdsburg NIFC C-8	38° 48.878' N	122° 44.441' W
Repeater	Konocti NIFC C-9	38° 48.841' N	122° 48.965' W
Repeater	Mt. Jackson C-2	38° 45.013' N	122° 55.875' W
Repeater	Mt. St. Helena C-12/L-2	38° 40.147' N	122° 37.910' W
Repeater	Mt. Veal C-2	38° 45.068' N	122° 37.780' W
Repeater	Quadrangle C-26	38° 43.976' N	121° 37.339' W
Repeater	Walker Ridge NIFC C-46	38° 48.800' N	122° 38.361' W
Repeater	Walker Ridge NIFC C-46	38° 48.800' N	122° 38.361' W
Wire Hazard	Russian River	38° 31.150' N	122° 54.630' W