



Transportation

LNU Lightning Complex
CA-LNU-013407
August 31, 2020
0700-0700



- Camp
- Dip Site
- Drop Point
- Helibase
- Helipad
- Incident Command Post
- Mobile Weather Unit
- Repeater
- Restricted Water Source
- Zone Break
- Division Break
- Branch Break
- Uncontrolled Fire Edge
- Completed Over Line
- H - H - H - Completed Hard Line
- R - R - R - Road as Completed Line
- Proposed Over Line
- Wildfire Daily Fire Perimeter
- Fuel Locations
- Interstate
- Highway or ramp
- County Boundary
- Wilderness
- Road Hazard

Vicinity Map

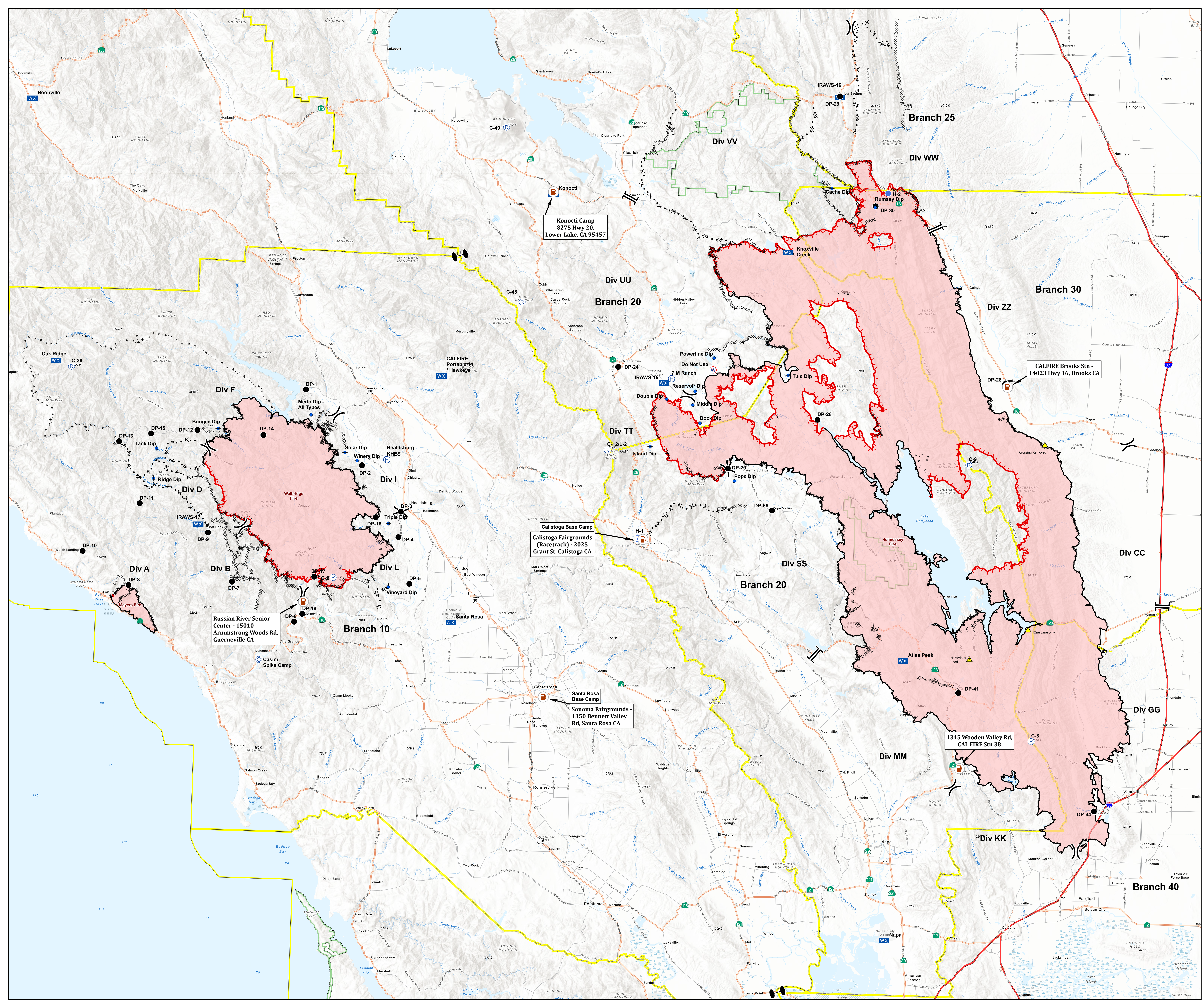


0 2 4 8
Miles

1:117,000
Datum: NAD 83

DISCLAIMER: The displayed incident data is approximate and should only be used for informational purposes. The information contained in this report was prepared from GIS data maintained by different sources and agencies and is not necessarily accurate to mapping, surveying, or engineering standards.

INT 2
August 30, 2020
2307 hrs



Konocti Camp
8275 Hwy 20,
Lower Lake, CA 95457

CALFIRE Portable
14
Hawkeye

CALFIRE Brooks Stn -
14023 Hwy 16, Brooks CA

Calistoga Base Camp
Calistoga Fairgrounds
(Racetrack) - 2025
Grant St, Calistoga CA

Santa Rosa Base Camp
Sonoma Fairgrounds -
1350 Bennett Valley
Rd, Santa Rosa CA

Russian River Senior
Center - 15010
Armstrong Woods Rd,
Guerneville CA

1345 Wooden Valley Rd,
CAL FIRE Stn 38