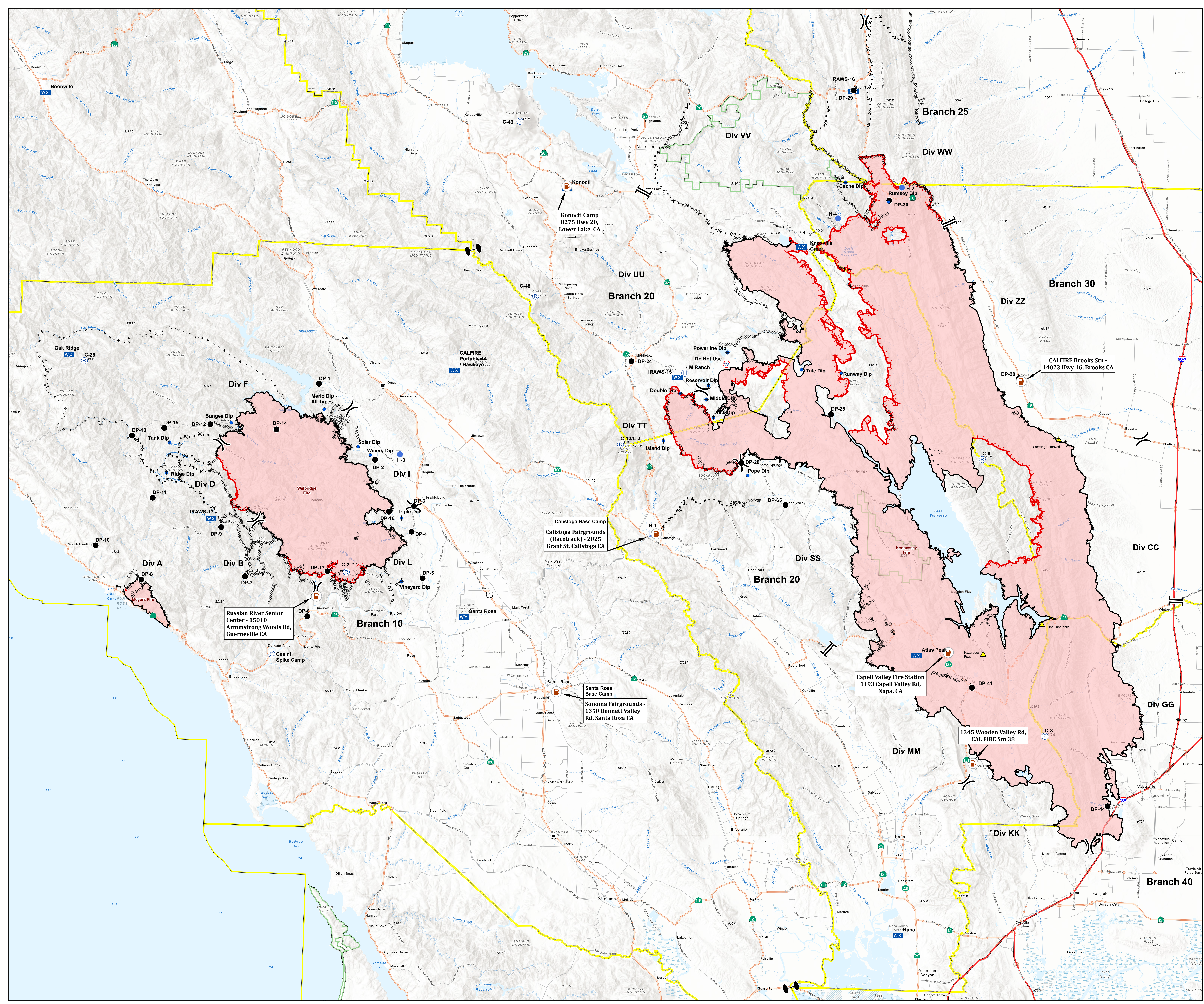




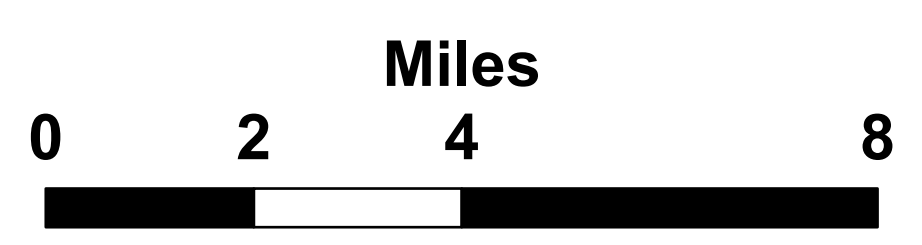
Transportation

LNU Lightning Complex
CA-LNU-013407
September 1, 2020
0700-0700



- Camp
- Dip Site
- Drop Point
- Helibase
- Helipad
- Incident Command Post
- Mobile Weather Unit
- Repeater
- Restricted Water Source
- Zone Break
- Division Break
- Branch Break
- Uncontrolled Fire Edge
- Completed Over Line
- H - H - H - Completed Hard Line
- R - R - R - Road as Completed Line
- X - X - X - Proposed Over Line
- Wildfire Daily Fire Perimeter
- Fuel Locations
- Interstate
- Highway or ramp
- County Boundary
- Wilderness
- Road Hazard

Vicinity Map



1:117,000
Datum: NAD 83

DISCLAIMER: The displayed incident data is approximate and should only be used for informational purposes. The information contained in this report was prepared from GIS data maintained by different sources and agencies and is not necessarily accurate to mapping, surveying, or engineering standards.

IMT 2
September 01 2020
0013 hrs