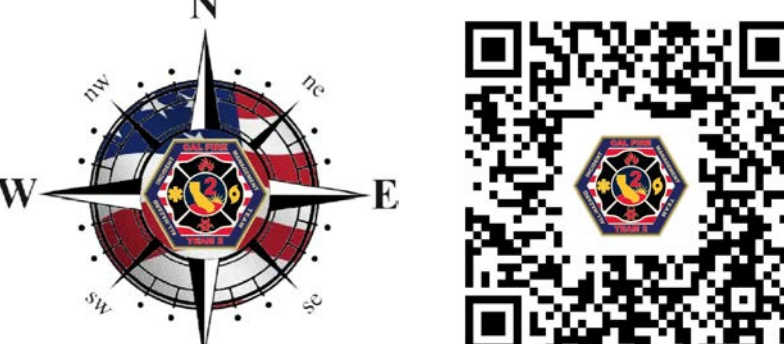




Air Operations
LNU Lightning Complex
 CA-LNU-013407
 September 3, 2020

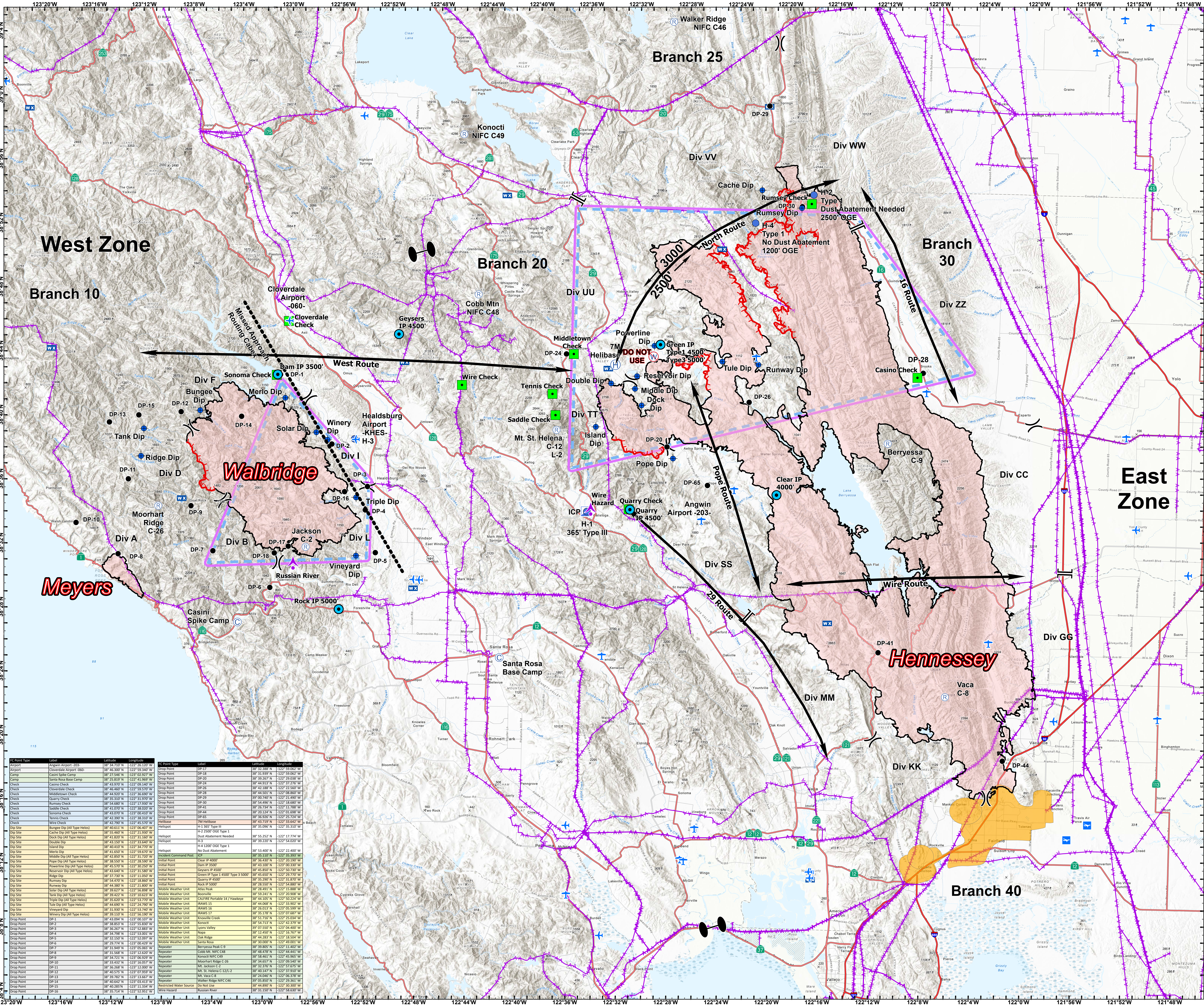
- Camp
- Dip Site
- Drop Point
- Helibase
- Helispot
- Incident Command Post
- Mobile Weather Unit
- Repeater
- Restricted Water Source
- Division Break
- Branch Break
- Zone Break
- International or Military Airport
- City or Regional Airport
- Airstrip
- Summits
- Check
- Initial Point (IP)
- Wire Hazard
- Uncontrolled Fire Edge
- Contained Line
- Aerial Hazards
- Missed Approach
- Route
- TFR
- Drone Ops Area



0 1.75 3.5 7
 Miles

1:130,000

DISCLAIMER: The displayed incident data is approximate and should only be used for informational purposes. The information contained in a supporting base layer was generated from GIS data maintained by different sources and agencies and is not necessarily accurate to mapping, surveying, or engineering standards.



IC Point Type	Label	Latitude	Longitude	IC Point Type	Label	Latitude	Longitude
Airport	Angwin Airport -203	38° 24' 10" N	122° 26' 12" W	Drop Point	DP-13	38° 34' 38" N	122° 26' 12" W
Airport	Cloverdale Airport -060	38° 26' 30" N	122° 26' 12" W	Drop Point	DP-15	38° 34' 38" N	122° 26' 12" W
Camp	Casini Spike Camp	38° 27' 54" N	122° 02' 52" W	Drop Point	DP-12	38° 34' 38" N	122° 26' 12" W
Camp	Santa Rosa Base Camp	38° 25' 58" N	122° 02' 52" W	Drop Point	DP-14	38° 34' 38" N	122° 26' 12" W
Check	Casini Check	38° 43' 57" N	122° 02' 52" W	Drop Point	DP-11	38° 34' 38" N	122° 26' 12" W
Check	Clowdville Check	38° 46' 46" N	122° 02' 52" W	Drop Point	DP-10	38° 34' 38" N	122° 26' 12" W
Check	Healdsburg Check	38° 42' 30" N	122° 02' 52" W	Drop Point	DP-9	38° 34' 38" N	122° 26' 12" W
Check	Quarry Check	38° 35' 31" N	122° 02' 52" W	Drop Point	DP-8	38° 34' 38" N	122° 26' 12" W
Check	Rumsey Check	38° 54' 68" N	122° 02' 52" W	Drop Point	DP-7	38° 34' 38" N	122° 26' 12" W
Check	Saddle Check	38° 41' 03" N	122° 02' 52" W	Drop Point	DP-6	38° 34' 38" N	122° 26' 12" W
Check	Sonoma Check	38° 43' 07" N	122° 02' 52" W	Drop Point	DP-5	38° 34' 38" N	122° 26' 12" W
Check	Tennis Check	38° 42' 30" N	122° 02' 52" W	Drop Point	DP-4	38° 34' 38" N	122° 26' 12" W
Check	Wire Check	38° 42' 79" N	122° 02' 52" W	Drop Point	DP-3	38° 34' 38" N	122° 26' 12" W
Dip Site	Bungee Dip (All Type Helos)	38° 40' 41" N	122° 02' 52" W	Drop Point	DP-2	38° 34' 38" N	122° 26' 12" W
Dip Site	Cache Dip (All Type Helos)	38° 41' 82" N	122° 02' 52" W	Drop Point	DP-1	38° 34' 38" N	122° 26' 12" W
Dip Site	Merio Dip	38° 43' 65" N	122° 02' 52" W	Drop Point	DP-0	38° 34' 38" N	122° 26' 12" W
Dip Site	Middle Dip (All Type Helos)	38° 42' 85" N	122° 02' 52" W	Drop Point	DP-29	38° 34' 38" N	122° 26' 12" W
Dip Site	Pope Dip (All Type Helos)	38° 38' 20" N	122° 02' 52" W	Drop Point	DP-28	38° 34' 38" N	122° 26' 12" W
Dip Site	Powerline Dip (All Type Helos)	38° 45' 57" N	122° 02' 52" W	Drop Point	DP-27	38° 34' 38" N	122° 26' 12" W
Dip Site	Hennessey Dip (All Type Helos)	38° 42' 30" N	122° 02' 52" W	Drop Point	DP-26	38° 34' 38" N	122° 26' 12" W
Dip Site	Ridge Dip	38° 37' 30" N	122° 02' 52" W	Drop Point	DP-25	38° 34' 38" N	122° 26' 12" W
Dip Site	Rumsey Dip	38° 54' 07" N	122° 02' 52" W	Drop Point	DP-24	38° 34' 38" N	122° 26' 12" W
Dip Site	Solar Dip (All Type Helos)	38° 38' 42" N	122° 02' 52" W	Drop Point	DP-23	38° 34' 38" N	122° 26' 12" W
Dip Site	Tank Dip (All Type Helos)	38° 39' 42" N	122° 02' 52" W	Drop Point	DP-22	38° 34' 38" N	122° 26' 12" W
Dip Site	Triple Dip (All Type Helos)	38° 35' 00" N	122° 02' 52" W	Drop Point	DP-21	38° 34' 38" N	122° 26' 12" W
Dip Site	Vineyard Dip (All Type Helos)	38° 38' 11" N	122° 02' 52" W	Drop Point	DP-20	38° 34' 38" N	122° 26' 12" W
Drop Point	DP-3	38° 43' 04" N	122° 02' 52" W	Drop Point	DP-19	38° 34' 38" N	122° 26' 12" W
Drop Point	DP-4	38° 38' 20" N	122° 02' 52" W	Drop Point	DP-18	38° 34' 38" N	122° 26' 12" W
Drop Point	DP-5	38° 36' 26" N	122° 02' 52" W	Drop Point	DP-17	38° 34' 38" N	122° 26' 12" W
Drop Point	DP-6	38° 39' 74" N	122° 02' 52" W	Drop Point	DP-16	38° 34' 38" N	122° 26' 12" W
Drop Point	DP-7	38° 35' 88" N	122° 02' 52" W	Drop Point	DP-15	38° 34' 38" N	122° 26' 12" W
Drop Point	DP-8	38° 33' 58" N	122° 02' 52" W	Drop Point	DP-14	38° 34' 38" N	122° 26' 12" W
Drop Point	DP-9	38° 34' 21" N	122° 02' 52" W	Drop Point	DP-13	38° 34' 38" N	122° 26' 12" W
Drop Point	DP-10	38° 34' 21" N	122° 02' 52" W	Drop Point	DP-12	38° 34' 38" N	122° 26' 12" W
Drop Point	DP-11	38° 34' 21" N	122° 02' 52" W	Drop Point	DP-11	38° 34' 38" N	122° 26' 12" W
Drop Point	DP-12	38° 40' 57" N	122° 02' 52" W	Drop Point	DP-10	38° 34' 38" N	122° 26' 12" W
Drop Point	DP-13	38° 35' 32" N	122° 02' 52" W	Drop Point	DP-9	38° 34' 38" N	122° 26' 12" W
Drop Point	DP-14	38° 40' 42" N	122° 02' 52" W	Drop Point	DP-8	38° 34' 38" N	122° 26' 12" W
Drop Point	DP-15	38° 42' 36" N	122° 02' 52" W	Drop Point	DP-7	38° 34' 38" N	122° 26' 12" W
Drop Point	DP-16	38° 35' 17" N	122° 02' 52" W	Drop Point	DP-6	38° 34' 38" N	122° 26' 12" W