

INCIDENT ACTION PLAN

5 DAY LNU LIGHTNING COMPLEX

CA-LNU-013407



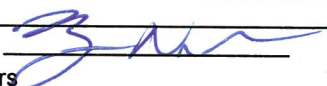
OPERATIONAL PERIOD

9/11/2020 0700

to

9/16/2020 0700

ORGANIZATION ASSIGNMENT LIST (ICS 203)

1. Incident Name: 5 DAY LNU LIGHTNING COMPLEX		2. Operational Period: Date From: 9/11/2020 Time From: 0700		Date To: 9/16/2020 Time To: 0700	
3. Incident Commander(s) and Command Staff:			7. Operation Section:		
IC/UC's	Jason Martin		Operations	Jason Martin	
Deputy			Deputy Operations		
Safety Officer			Night Ops		
Information Officer			Infrastructure		
Liaison Officer			Zone	Walbridge	
4. Agency/Organization Representatives:			Branch	SONOMA	
Agency/Organization	Name		Division/Group		
Napa County Chief	Geoff Belyea		Division/Group	A	
Napa E.O.C	Chris Schow		Division/Group	B	
CA State Parks	Loren Rex		Division/Group	D / F	
MCAD	Sean Sunahara / Richard Brechbuehl		Division/Group	I / L	
			Zone	Hennessey	
			Division/Group	Hennessey	
			Division/Group	STL 9145C (12 hr)	
			Division/Group		
			Division/Group		
			Division/Group		
			Division/Group		
			Division/Group		
			Division/Group		
			Division/Group		
			Division/Group		
			Division/Group		
			Division/Group		
			Division/Group		
			Division/Group		
			Branch	FSR	
			Division/Group	FSR	
			Division/Group	Lou Sciocchetti (12 hr)	
			Division/Group	Peter Leutzinger (12 hr)	
			Division/Group		
5. Planning Section:			Division/Group		
Chief	LNU ECC		Division/Group		
Deputy			Division/Group		
Resource Unit			Division/Group		
Situation Unit			Division/Group		
Documentation Unit			Division/Group		
Demobilization Unit			Division/Group		
GISS			Division/Group		
FBAN			Division/Group		
IMET			Division/Group		
Hired Equip. Tech Spec	Chris Rickert		Air Operations Branch		Director:
Crew Tech Spec			Air Support Group Supervisor		
DINS			Air Tactical Group Supervisor		
6. Logistics Section			Helibase Manager		
Chief	Ben Smutney / Brandon Maldonado				
Supply Unit	LNU Warehouse		8. Finance/Administration Section:		
Facilities Unit			Chief	Chuck Carrol	
Ground Support Unit	Sonoma Fairgrounds / CAL FIRE STN 41		Time Unit	Micah McConnell	
Communications Unit			Procurement Unit	Josh Shifrin	
Medical Unit			Comp/Claims Unit	Cesar Nerey	
Motel Unit	Carol Mickey		Cost Unit	Michele Patton	
Prepared By: Name: Roger Noon		Position/Title: PSCI		Signature: 	
ICS 203		Date/Time: 9/10/2020 2300 hours			



Fire Weather Forecast

FRI-TUE, SEPTEMBER 11-15, 2020



FORECAST NO: 24
PREDICTION FOR: Friday-Tuesday
SHIFT DATE: September 11-15, 2020
ISSUED: 1800, September 10, 2020

NAME OF FIRE: LNU COMPLEX
UNIT: CALFIRE-LNU
INCIDENT METEOROLOGIST: Scott Carpenter

...Forecast for locations across the LNU Lightning Complex from 1000-2000 ft elevation...

DISCUSSION: No precipitation is expected through Monday. A disturbance in the southwest flow aloft will shift the prevailing southwest winds briefly to the northwest Monday. There will be a very slim chance for some showers Tuesday, with better chances passing to the north of the LNU Lightning Complex area.

FRIDAY/FRIDAY NIGHT:

- **WEATHER:** Marine layer clouds and fog near Walbridge in the morning, then clearing in the afternoon. Smoke likely overhead.
- **1600 WIND (20 FT):** Southwest 5-10 mph
- **MAX TEMPERATURES:** 83-89°F **MIN TEMPS:** 51-55°F
- **MIN RH:** 26-44% **MAX RH:** 63-100%

SATURDAY/SATURDAY NIGHT:

- **WEATHER:** Marine layer clouds and fog near Walbridge in the morning, then clearing in the afternoon.
- **1600 WIND (20 FT):** Southwest 8-13 mph with gusts to 20 mph
- **MAX TEMPERATURES:** 85-90°F **MIN TEMPS:** 45-55°F
- **MIN RH:** 30-45% **MAX RH:** 60-100%

SUNDAY/SUNDAY NIGHT:

- **WEATHER:** Marine layer clouds and fog near Walbridge in the morning, then clearing in the afternoon.
- **1600 WIND (20 FT):** West-southwest 5-10 mph with gusts to 15 mph
- **MAX TEMPERATURES:** 83-88°F **MIN TEMPS:** 48-55°F
- **MIN RH:** 24-42% **MAX RH:** 66-100%

MONDAY/MONDAY NIGHT:

- **WEATHER:** Marine layer clouds and fog near Walbridge in the morning, then partly cloudy in the afternoon.
- **1600 WIND (20 FT):** West-northwest 8-13 mph with gusts to 20 mph
- **MAX TEMPERATURES:** 80-85°F **MIN TEMPS:** 54-59°F
- **MIN RH:** 31-48% **MAX RH:** 77-100%

TUESDAY/TUESDAY NIGHT:

- **WEATHER:** Marine layer clouds and fog near Walbridge in the morning, then partly cloudy with a 5% chance of thunderstorms with little to no rainfall in the afternoon.
- **WIND (20 FT):** West-southwest 6-12 mph with gusts to 15 mph
- **MAX TEMPERATURES:** 80-85°F **MIN TEMPS:** 52-57°F
- **MIN RH:** 40-51% **MAX RH:** 69-100%

The 8-14 day outlooks and 3-4 week outlooks indicate a slight tilting of the odds toward below normal precipitation, and a strong likelihood of above normal temperatures continuing across the area.

For Updates or to request a Spot Forecast, please use weather.gov/spot and contact Monterey at 831-656-1717

Weather Obs Sites



NWS

FIRE BEHAVIOR FORECAST

FORECAST NUMBER: 24	TYPE OF FIRE: WILDLAND FIRE
FIRE NAME: LNU Lightning Complex (CALNU013407)	OPERATIONAL PERIOD: 09/11/20 – 09/15/20 (5 day)
DATE ISSUED: 09/10/2020	TIME ISSUED: 1100Hrs
UNIT: CA-LNU	SIGNED: Robert Clark Typed/printed: R. Clark

INPUTS

WEATHER SUMMARY: *SEE OFFICIAL FORECAST*****

No precipitation is expected through Monday. Marine layer clouds and fog likely to affect the fire area in the morning hours through the forecast period.

WINDS: See daily weather forecast

MAX TEMPS: 80-90F **MIN RH:** 24-51%

OUTPUTS

FIRE BEHAVIOR

GENERAL: The area is in severe drought stage and fuels are extremely dry. It will provide a receptive fuel bed for any ignition or spot fires, and will be until precipitation occurs. 1000 hr fuel moistures are below the 3rd percentile. The primary driver of any fire activity will be wind and topography. Terrain and slope driven fire runs can still be possible with any active fire or initial attack. Expect fire potential to increase any time the skies clear and solar radiation increases.

Expect any new start or spot fire to be highly resistant to control during peak daytime heating

Initial Attack Fire Behavior Potential (Head fire, up wind, up slope)

Grass – **Rate of Spread** up to 1 mi/hr **Flame Lengths** 4-6 ft.

Brush – **Rate of Spread** up to 1.5 mi/hr **Flame Lengths** 10-20 ft.

Rates of spread and flame lengths could exceed forecasted values.

100hr FM: 5% (Record low) **1000hr FM:** 8% (Near record low) **ERC's:** Above the 97th percentile

Probability of Ignition: up to 50% **Spotting Distance:** Spotting up to 1/2 mile. (Peak gusts)

SPECIFIC:

Fire behavior is minimal with isolated heat holding in drainages and larger fuels. Creeping and smoldering fire behavior in islands is possible and conditions are still present to produce flare ups. Interior smokes will be present.

AIR OPERATIONS: Smoke from area fires may limit visibility.

SAFETY

Fuels outside the line will continue to be very receptive. Be prepared to react to rollout or new starts.

Watch for fire-weakened trees/branches falling after extended burn-out times of heavy fuels.



LNU LIGHTNING COMPLEX SAFETY MESSAGE

INCIDENT: Lightning Complex CA-LNU-013407		DATE: September 11-16, 2020		TIME: 0700-0700	
Major Hazards / Risks: Fatigue//Dehydration, Driving, New Fires, Hazard Trees					
Heat Stress and Fatigue: Be alert for the cumulative effects of fatigue and take breaks as necessary. Effects include slower reactions, lack of attention and forgetfulness. Dehydration contributes to fatigue. As fatigue increases, injuries tend to increase also.					
Personnel: Monitor yourself and those around you. Consider a 2:1 water to electrolyte drink ratio and eat nutritious food regularly. Stay engaged and make smart decisions.					
Driving: Reduce your speed! Drive defensively on narrow winding roads. Expect the unexpected around every curve. Drive with headlights and seatbelts on and utilize backers. Coordinate your movements on one-lane roads.					
Fire Behavior: Be prepared for new fires in the area. Fuels are receptive to fire spread. A small amount of wind on this dry fuel changes fire behavior dramatically!! Be alert to changes in wind direction and expect changes in fire behavior. Watch for spot fires outside of control lines and embers cast into structures.					
Hazard trees: Survey all areas for hazard trees, flag and restrict access, use only qualified personnel for tree felling. Brief personnel on Hazard Tree Safety on page 22 of your IRPG. Assess potential for trees to domino. Post lookouts when there is possible danger.					
Line Construction: Conduct a thorough briefing for all personnel. Ensure LCES are in place prior to engagement. Use Downhill Checklist in the IRPG. Maintain proper crew spacing.					
Ash pits: Risk of deep ash pits or root cavities with hot coals. White ash can be an indicator of ash pits. Stumps and roots may be fully consumed by fire. Difficult to identify hazard which likely extends beyond the immediate area along underground root lines. Risk of slips, trips, and falls.					
Steep slopes/rolling material: Watch your footing while hiking in steep terrain. Be careful of rolling debris. Stagger personnel hiking uphill in loose soil. Maintain Situational Awareness.					
Lookouts, Communication, Escape routes, Safety zones					
<u>Covid-19 Precautions:</u>			<u>Mop Up:</u>		
<ul style="list-style-type: none"> • Keep your distance. Wear a mask when less than 6' from other people. • No group gatherings without masks. • Wash your hands. • Don't show up to work sick. Do daily health evaluations on your personnel.			<ul style="list-style-type: none"> • Conduct thorough briefing for all personnel. • Use all required PPE, including eye protection. • Be alert for stump holes and root cavities. • Evaluate unburned islands/Increase situational awareness. • Back haul all trash and equipment off the line. • Lift equipment with your legs and not your back. 		

Incident Safety Officer: Ryan Danielsen SOF1 (T)

Incident Commander: Sean Kavanaugh

During this pandemic, Public Health's focus is to reduce the spread of COVID-19 and to help keep our community healthy.

Find out about all the information, education, assistance, and support services we provide!

**Wear Your Mask
Wash Your Hands
Watch Your Distance**

Where to go for more information and help:

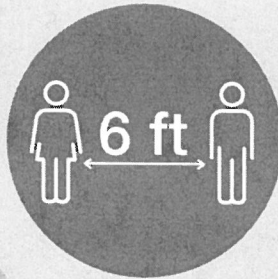
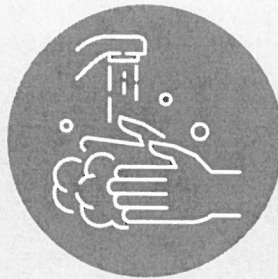
Testing information and more:
[countyofnapa.org/coronavirus](https://www.countyofnapa.org/coronavirus)

Resources and assistance:
[readynapacounty.org](https://www.readynapacounty.org)

Coronavirus information and help line:
707-253-4540



Public Health
Prevent. Promote. Protect.



Durante esta pandemia, el enfoque de Salud Pública es de reducir la propagación de COVID-19 y de ayudar a mantener saludable a nuestra comunidad.

¡Descubra toda la información, educación, asistencia y servicios de apoyo que brindamos!

**Use su cubrebocas
Lávese las manos
Mantenga su distancia**

Dónde puede obtener más información y ayuda:

Información sobre pruebas y más:
[countyofnapa.org/coronavirus](https://www.countyofnapa.org/coronavirus)

Recursos y asistencia:
[readynapacounty.org/spanish](https://www.readynapacounty.org/spanish)

Información sobre coronavirus y línea de ayuda:
707-253-4540



LNU LIGHTNING COMPLEX INCIDENT RISK ANALYSIS (ICS 215a)

DIV	HAZARDOUS ACTIONS/CONDITIONS	MITIGATIONS / WARNINGS / REMEDIES
ALL	FATIGUE / HEAT / DEHYDRATION	During periods of hot/dry weather with limited resources be alert for signs of fatigue and take breaks as necessary. Drink water before, during and after shifts, up to 1.5 gal. per shift. Be alert for signs of heat stress in yourself and others; use the buddy system. Eat small meals often and when possible.
ALL	DRIVING	Drive defensively! Narrow winding roads are hazardous. Slow Down. Drive with headlights on and seatbelts on. Be alert for heavy trucks and high-speed opposing traffic crossing into your lane. Use warning devices when operating near traffic. Watch for downed trees and rocks on roadways.
ALL	FIRE BEHAVIOR	Anticipate new starts. Review Wildland Urban Interface Firefighting in the IRPG. Monitor current weather conditions and forecasts. Make sure all personnel receive a briefing. Work within your capabilities when limited resources are available. Maintain escape routes and safety zones.
ALL	HAZARD TREES	Identify and isolate the area to provide for safety of others. Flag and make the proper notifications. Evaluate all trees prior to working under or near them. Don't fall any tree outside of your qualification. Post lookouts when there is possible danger.
ALL	STEEP TERRAIN / ROLLING DEBRIS	Watch your footing while hiking in steep terrain. Be careful of loose rolling debris. Maintain Situational Awareness and separation.
ALL	MOP UP AND PATROL	Use all required PPE, including eye protection and gauntlet gloves. Maintain proper spacing and overhead clearance. Be alert for ash pits and root cavities. Evaluate unburned islands, and consider re-burn potential.
ALL	ASH PITS	Risk of deep ash pits or root cavities with hot coals. White ash is sometimes an indicator of ash pits. Stumps and roots may be fully consumed by fire. Difficult to identify hazard which likely extends beyond the immediate area along underground root lines. Risk of slips, trips, and falls.
ALL	COVID 19	Maintain 6' distance whenever possible. Wear masks when less than 6' away from people, frequent hand washing/sanitizing, disinfect common surfaces, follow Napa County Public Health Guidelines. Conduct daily health evaluation of all personnel. Monitor for symptoms, follow reporting procedure.
ALL	FIRE SUPPRESSION REPAIR	Maintain accountability of personnel at all times. Monitor appropriate tactical channels. Use caution when operating equipment adjacent to unburned fuels. Consider the need for suppression apparatus.
ALL	HEAVY EQUIPMENT	Watch for rolling material and avoid working below heavy equipment. Monitor safe working distances. Avoid working below heavy equipment. Utilize communication with the operator (radio or hand signals). Stay out of the dust.
ALL	POWER LINES	Follow <i>Powerline Safety</i> guidelines in the IRPG. Communicate power line hazards to immediate supervisor. Flag area around downed power lines and deny access. Treat all downed power lines as energized.
ALL	AIRCRAFT OPERATIONS	Monitor air-to-ground frequency, they are your eyes in the sky. Use air-to-ground frequency to communicate with aircraft. Use clear, concise statements when directing aircraft.
ALL	PERFORM TAIL GATE SAFETY MEETINGS	Everyone should be briefed on the conditions and circumstances regarding the fire and their assignments per the IRPG. Ensure all personnel have PPE, food, and water.
ALL	LINE CONSTRUCTION	Conduct thorough briefing for all personnel. Ensure LCES are in place prior to engagement. Use Downhill Line Checklist in the IRPG.
Incident Name: Lightning Complex ICS 215a		DATE PREPARED: September 10, 2020 1100 hrs. Prepared by: Ryan Danielsen SOF1 (T)
		OPERATIONAL PERIOD 09-10-2020-09-16-20

MEDICAL PLAN (ICS 206)

1. Incident Name: <p style="text-align: center;">5 DAY LNU LIGHTNING COMPLEX</p>	2. Operational Period: Date From: 9/11/20 Date To: 9/16/20 Time From: 0700 Time To: 0700
---	--

3. Medical Aid Stations:			
Name	Location	Contact Number/Freq	Paramedics
CAL MAT (Treatment & Supplies)	Sonoma Base Camp	831-295-3184	Yes

4. Transportation (indicate air or ground):			
Ambulance Service	Location	Contact Number	Level of Service
AMR Napa	841 Latour Ct, Napa, CA 94558	St Helena ECC	ALS
AMR Sonoma	930 S A St, Santa Rosa, CA 95404	St Helena ECC	ALS
Cal Fire C-104 (Day Hoist)	7M Helibase	St Helena ECC	BLS
CHP H-30 / H-32 (Day Hoist)	Napa Airport	St Helena ECC	ALS
Reach Air	Napa / Santa Rosa	St Helena ECC	ALS

5. Hospitals:							
Hospital Name	Address,	Contact Number(s)/ Frequency	Travel Time		Trauma Center	Burn Center	Helipad
	Lat & Long Helipad		Air	Ground			
Adventist Health St Helena	10 Woodland Road, Saint Helena, CA 94574, Lat/Long: 38.5425501, -122.4748268	(707) 963-3611	00:03	00:25		<input type="checkbox"/>	<input type="checkbox"/>
Queen of the Valley Medical Center	1000 Trancas Street, Napa, CA 94558, Lat/Long: 38.324482, -122.2971094	(707) 252-4411	00:05	00:34	Level 3	<input type="checkbox"/>	<input checked="" type="checkbox"/>
Santa Rosa Memorial Hospital	1165 Montgomery Dr., Santa Rosa, CA 95405, Lat/Long: 38.4437589, -122.7011068	(707) 546-3210	00:09	01:00	Level 2	<input type="checkbox"/>	<input checked="" type="checkbox"/>
University of California, Davis Medical Center	2315 Stockton Blvd., Room 4206, Sacramento, CA 95817, Lat/Long: 38.5549492, -121.4546344	(916) 734-2011	00:19	01:18	Level 1	<input checked="" type="checkbox"/>	<input checked="" type="checkbox"/>
Kaiser Permanente	1 Quality Dr Vacaville, CA 95688 Lat/Long: 38.3887500, -121.9404167	707-624-4000	0:05	0:20		<input type="checkbox"/>	<input checked="" type="checkbox"/>

6. Special Medical Emergency Procedures	
<p>Line Emergency Crew Supervisor will contact Division Supervisor with patient complaint/condition and location. - Division Group Supervisor Contacts: 1. Closest EMS resource 2. St Helena ECC - St Helena ECC Contacts: 1. Ground or Air ambulance as requested 2. Operations 3. Safety</p> <p>- Division Supervisor or designee will serve as point of contact and run medical emergency on assigned channel. 1. A pre-assigned tactical frequency (i.e. CALCORD) should be used for IWI and only for duration of the emergency. - Communications Unit will clear the Command channel for emergency traffic as needed for duration of the need.</p> <p>Camp Emergency Contact Medical Unit with patient complaint/condition and location. Medical staff will respond to stabilize the patient. - Contact St Helena ECC 1. Ground or Air ambulance as requested 2. Operations 3. Safety</p>	<p>Injury Reporting Procedures</p> <p>Nature of Injury: _____ Location of Patient: _____ Point of Contact: _____ Transportation Requested by: Air ___ Ground ___ Point of Pick-Up: _____ Lat: _____ Long: _____ Patient Unit ID: _____ Is an EMT with Patient: Yes ___ No ___ Age: _____ Sex: Male ___ Female ___</p> <p>All Emergencies - Secure the area and identified witnesses for later investigation. Keep accurate log of events.</p>

Check box if aviation assets are utilized for rescue. If assets are used, coordinate with Air Operations.

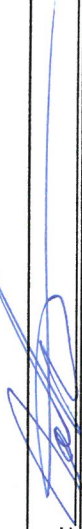
7. Prepared by (Medical Unit Leader): Justin VanderHulst Signature:

8. Approved by (Safety Officer): Chad Thompson Signature:

ICS 205 - INCIDENT RADIO COMMUNICATIONS PLAN

CONTROLLED UNCLASSIFIED INFORMATION/BASIC

1. Incident Name: 5 DAY LNU LIGHTNING COMPLEX		2. Date/Time Prepared Date: 09/10/2020 Time: 1930		3. Operational Period: Date From: 09/11/20 Time From: 0700		Date To: 09/16/20 Time To: 0700		
4. Communications								
Ch#	Function	Name	Assigned To	Rx Freq	Rx Tone	Tx Freq	Tx Tone	Notes
1	COMMAND	LNU EAST	HENNESSEY	151.3400	136.5 (T4)	159.3150	131.8 (T3)	(MT VACA) TONE 3
2	COMMAND	LNU EAST	HENNESSEY	151.3400	136.5 (T4)	159.3150	136.5 (T4)	(BERRYESSA PEAK) TONE 4
3	COMMAND	LNU EAST	HENNESSEY	151.3400	136.5 (T4)	159.3150	146.2 (T5)	(WALKER RIDGE) TONE 5
4	COMMAND	LNU EAST	HENNESSEY	151.3400	136.5 (T4)	159.3150	156.7 (T6)	(ST HELENA) TONE 6
5	COMMAND	CDF C6	SONOMA	151.2500	103.5 (T8)	159.3600	127.3 (T12)	(MT JACKSON) TONE 12
6	COMMAND	CDF C6	SONOMA	151.2500	103.5 (T8)	159.3600	141.3 (T13)	(OAK RIDGE) TONE 13
7	COMMAND	CDF C6	SONOMA	151.2500	103.5 (T8)	159.3600	151.4 (T15)	(GEYSER PEAK) TONE 14
8	TACTICAL	CDF T26	HENNESSEY / SONOMA DIV A, DIV B	159.2925	192.8 (T16)	159.2925	192.8 (T16)	HENNESSEY, SONOMA DIV A, DIV B
9	TACTICAL	CDF T28	HENNESSEY / SONOMA DIV D/F	151.1825	192.8 (T16)	151.1825	192.8 (T16)	SONOMA DIV D / F & HENNESSEY
10	TACTICAL	CDF T27	HENNESSEY / SONOMA DIV D/F	159.3075	192.8 (T16)	159.3075	192.8 (T16)	DIV I / L SONOMA
11	TACTICAL	VFIRE 22	INITIAL ATTACK	154.2650	156.7 (T6)	154.2650	156.7 (T6)	INITIAL ATTACK ONLY
12	TACTICAL	CDF T6	INITIAL ATTACK	151.3250	192.8 (T16)	151.3250	192.8 (T16)	INITIAL ATTACK ONLY
13	AIR TO GROUND	CDF T24	SONOMA / HENNESSEY	151.3325	192.8 (T16)	151.3325	192.8 (T16)	AIR TO GROUND SONOMA / HENNESSEY
14	MEDICAL	CALCORD	INCIDENT WIDE	156.0750	156.7 (T6)	156.0750	156.7 (T6)	EMS COORDINATION
15	AIR TO GROUND	CDF A/G 2	INITIAL ATTACK	159.2625	192.8 (T16)	159.2625	192.8 (T16)	AIR TO GROUND INITIAL ATTACK ONLY
16	EMERGENCY	GUARD	EMERGENCY	168.6250		168.6250	110.9 (T1)	EMERGENCY USE ONLY
17								
18								
19								
20	EMERGENCY	GUARD	EMERGENCY	168.6250		168.6250	110.9 (T1)	EMERGENCY USE ONLY
5. Special Instructions								

6. Prepared by (Communications Unit Leader): Name: John McCormick COML (T) Signature: 

ICS 205 - CONTROLLED UNCLASSIFIED INFORMATION/BASIC NIMS IAP Date/Time: 09/10/20 1930

"LNU Lighting Complex" Incident Fire Suppression Repair Plan

I. Objectives

The purpose of this plan is to establish expectations for the orderly and cost effective mitigation of fire suppression damage. Given the magnitude of the LNU Lightning Complex, the Fire Suppression Repair (FSR) technical specialists will use this plan as a general guide but will also have to be as adaptive as possible in ensuring the most expedient and effective measures are implemented given the range of the FSR-related conditions they will likely encounter throughout the Sonoma Lake Napa Unit.

II. General Repair Guidelines

A. Helispots/Staging Areas/Safety Zones

- 1) Re-contour to the original slope as requested by the Repair Specialist.
- 2) Remove soil, and/or breach berms so that runoff can be dissipated. Cross drain these areas to effectively dissipate water runoff.
- 3) Place disturbed vegetation, brush and trees, piled during line construction, on the surface of safety zones and open areas. This may be done with equipment or hand crews.

B. Roads

- 1) Re-establish existing berms where applicable.
- 2) Breach berms to facilitate drainage, where applicable.
- 3) Clean culverts plugged with soil and rock resulting from fire suppression activities.
- 4) Blading or grading of roads may be necessary.

C. Firelines; Hand and Dozer

Install waterbars **as needed**. Waterbars are designed to intercept, slow and spread the precipitation run-off in order to reduce sediment transport and soil erosion. The idea is to move water off the fireline before it can build up enough energy to erode and transport sediment. Re-establish waterbars and rolling dips using pre-fire locations. Flatten berms along fire lines to match natural contours. Utilize cut vegetation for erosion control on steep dozer and hand lines.

Water Bar or cross drain spacing				
Fireline or Road Gradient (%)	0-10%	11-25%	26-50%	>50%
Spacing	200'	150'	100'	75'

D. Watercourses

- 1) Watercourse crossings shall be dipped to original configuration. Waterbreaks shall be installed on each side of channel to divert flow off of trails prior to entering watercourse channel.
- 2) Remove all soil and debris that was placed in any stream channel. A Repair Specialist will review the site for acceptability. If all foreign material cannot be removed with heavy equipment, the material shall be removed by hand. The approaches to the crossing may be sloped back to prevent future stream bank failure.

E. Other Repair Concerns

- 1) Remove all trash from fire lines and other affected areas.
- 2) Repair, broken, damaged fences, and/or gates damaged as the result of the fire control operations will be repaired. (Note: Extent and condition of damage should be documented prior to repairs.)

Prepared by:

Jason Butcher, Fire Suppression Repair Lead

**Archaeological and Historic Properties:
General Fire-line Guidance.**

**Do not compromise safety for the protection and preservation of archaeological and historic properties.
When possible and prudent:**

1. Be on the lookout for prehistoric and historic archaeological sites. These sites typically occur adjacent to streams and springs, confluences are often especially sensitive. However, sites can occur in other areas too. The most common indicators of prehistoric sites in this area (North Coast Ranges) are scatters of shiny black obsidian flakes from tool making activities and dark midden soils. Historic-era sites include homesteads that contain foundations, rock chimneys, and stone / brick-lined wells. Historic-era mining sites are possible as well.
2. Note, that not much of the area has ever been surveyed for archaeological resources and many sites out there have yet to be discovered.
3. If you observe archaeological resources, flagged or unflagged, attempt to avoid with ground disturbing activities altogether.
4. If avoidance is not possible, minimize ground disturbance. Use a hand crew rather than a dozer to remove fuels from control lines that must cross site areas if possible.
5. Leave all artifacts in place as some may have been intentionally placed for religious or ceremonial reasons.
6. Note locations of discovered resources on a map, better yet, take site coordinates with a GPS. Leave information for the archaeologist so that the sites can be relocated and protected during Fire Suppression Repair. Flag the site in red if possible.
7. If you encounter a burial or other human remains, cease work in that area and contact the archaeologist immediately.

Your help preserving California's non-renewable cultural resources is appreciated. It is our responsibility as federal and state employees to help in the protection of our heritage – preserving these places, and artifacts for scientific, cultural, educational, spiritual, and religious uses.

Contact Information:

Christopher Lloyd
Ukiah Field Office Archaeologist
Bureau of Land Management
(707) 468-4075
crlloyd@blm.gov

Stephanie Velasquez
Senior State Archaeologist, Northern Region
CAL-Fire
(530) 224-4749 (office)
(530) 949-8822 (mobile)
stephanie.velasquez@fire.ca.gov

Ben Harris –
Associate State Archaeologist Northern Region (MEU, LNU, CZU, and SCU)
Northern Region Headquarters
135 Ridgway Avenue
Santa Rosa, CA 95401
(707) 576-2966 (office)
(707) 529-7989 (mobile)
ben.harris@fire.ca.gov

5-Day IAP
Demobilization Plan
LNU Lightning Complex
CA-LNU-013407

- As of 1200 hours on Friday, September 11th the demob unit at the Santa Rosa ICP will be closed.
- The ECC Support Team will be in place through the weekend and handling all releases over the phone.
 - Contact expanded ECC with release information at (707) 967-1450
- Starting Monday, September 14th all releases will be handled by the LNU ECC.
 - Contact the ECC at (707) 963-4112
- All mechanical demob inspections will take place at the Santa Rosa Fairgrounds in the parking lot through the weekend.
 - 1350 Bennett Valley Rd, Santa Rosa, CA 95404
 - Contact Ken Coulston at (760) 835-5396
- Starting Monday, September 14th all mechanical demob inspections will take place at the CAL FIRE Santa Rosa Station.
 - CAL FIRE Station 41 - 2210 W College Ave, Santa Rosa, CA 95401
- For all finance and time unit needs please reference the finance message in the IAP.
- All logistical needs should be directed to Brendan Maldonado at (707) 779-2783

LNU COMPLEX FINANCE INFO

- Finance has moved
Meritage Hotel
875 Bordeaux Way, Napa
- Private suppliers- Your pay documents can be completed remotely – via email. Ensure your shift tickets and travel out are completed.
- eFC33 and Private suppliers assistance, contact (707) 217-9002

Finance Contacts	
FSC1 – Chuck Carroll 408-472-1612	COMP – Cesar Nerey 925-872-8559
TIME – Micah McConnell 530-635-7269	PROC – Josh Shifrin 310-487-9145



LNU LIGHTNING COMPLEX PUBLIC INFORMATION

Incident Information Line: 707-967-4207

Email pictures to: LNULightningComplex2020@gmail.com

MEDIA: California State Penal Code Section 409.5(d) allows the news media to enter scenes of disaster, riot, or civil disturbance. Properly identified members of the news media should not be restricted from entering the locations specified within the code, even if the area presents a danger to them. Media members should be advised of the nature of possible danger. Members of the media do not have the right to access crime scenes or any area where their presence may interfere with incident operations, mitigation or evidence collection. The media may only access private property with the property owner’s permission. Fire personnel cannot provide members of the media with authorization to enter private property. If approached and questioned by the media and/or the public, talk about your assignment or task at hand. If need be, direct the questioning party to the incident PIO. Do not speculate or give opinions There is no such thing as an “off the record” comment.

CAL FIRE SOCIAL MEDIA POLICY (Social Media 0691): Social Media is increasingly being used by public agencies and the media as well as the public. This form of communication continues to grow rapidly in order to supply the public’s desire for instant information gratification. All personnel assigned to a CAL FIRE incident will adhere to the CAL FIRE Social Media Policy. Further information about the CAL FIRE Social Media Policy can be obtained from the Information Officer. If you are uncertain, please ask.

Do not post:

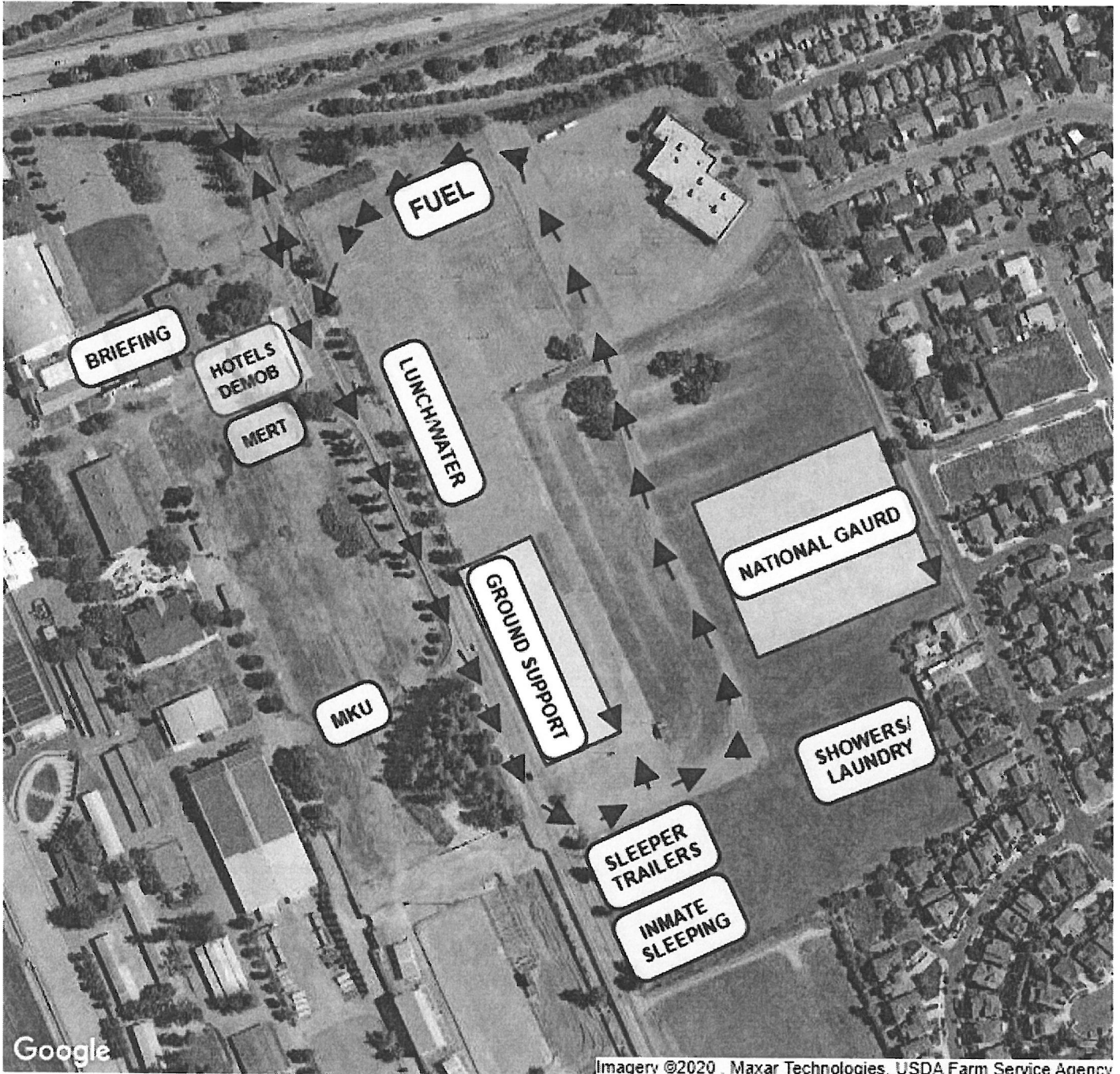
- Inappropriate information, pictures or videos. Opinions regarding the incident, policy or endorsements of any kind.

PICTURES AND VIDEO OF INCIDENT: We are in a new era of media. Media no longer means the news/broadcast industry but now refers to anyone that has the capability to shoot video and or photographs and post them onto social media in a matter of minutes. Unfortunately, we have seen some instances of video or photographs that have depicted unsafe, unprofessional or embarrassing circumstances which are a serious breach of ethics. When this happens, it reflects poorly on all that are attached to this incident. Posting an inappropriate video, photo or blog comment could have unwanted effects. It may be unsafe to shoot photos or video and a firefighter who is concentrating on a camera can’t be looking up, down and all around.

LOST AND FOUND: The Information staff will manage Lost and Found items for the incident. If you have lost an item, leave your contact information and what you have lost at the Information trailer. If you have found an item on the incident, bring the item to the Information trailer.

MAIL SERVICE: The Information staff will assist you in mailing and receiving letters and packages. **Calistoga Fairgrounds, 1435 N Oak St, Calistoga, CA 94515**

Complex: _____ acres _____ %
Hennessey: _____ acres _____ %
Walbridge: _____ acres _____ %
Meyers: _____ acres _____ %



Google

Imagery ©2020, Maxar Technologies, USDA Farm Service Agency

© Scribble Maps

