


123°8'0"W 123°6'0"W 123°4'0"W 123°2'0"W 123°0'0"W 122°58'0"W 122°56'0"W 122°54'0"W

38°46'0"N
38°44'0"N
38°42'0"N
38°40'0"N
38°38'0"N
38°36'0"N
38°34'0"N
38°32'0"N
38°30'0"N
38°28'0"N

38°46'0"N
38°44'0"N
38°42'0"N
38°40'0"N
38°38'0"N
38°36'0"N
38°34'0"N
38°32'0"N
38°30'0"N
38°28'0"N

NATIONAL

INFRARED OPERATIONS


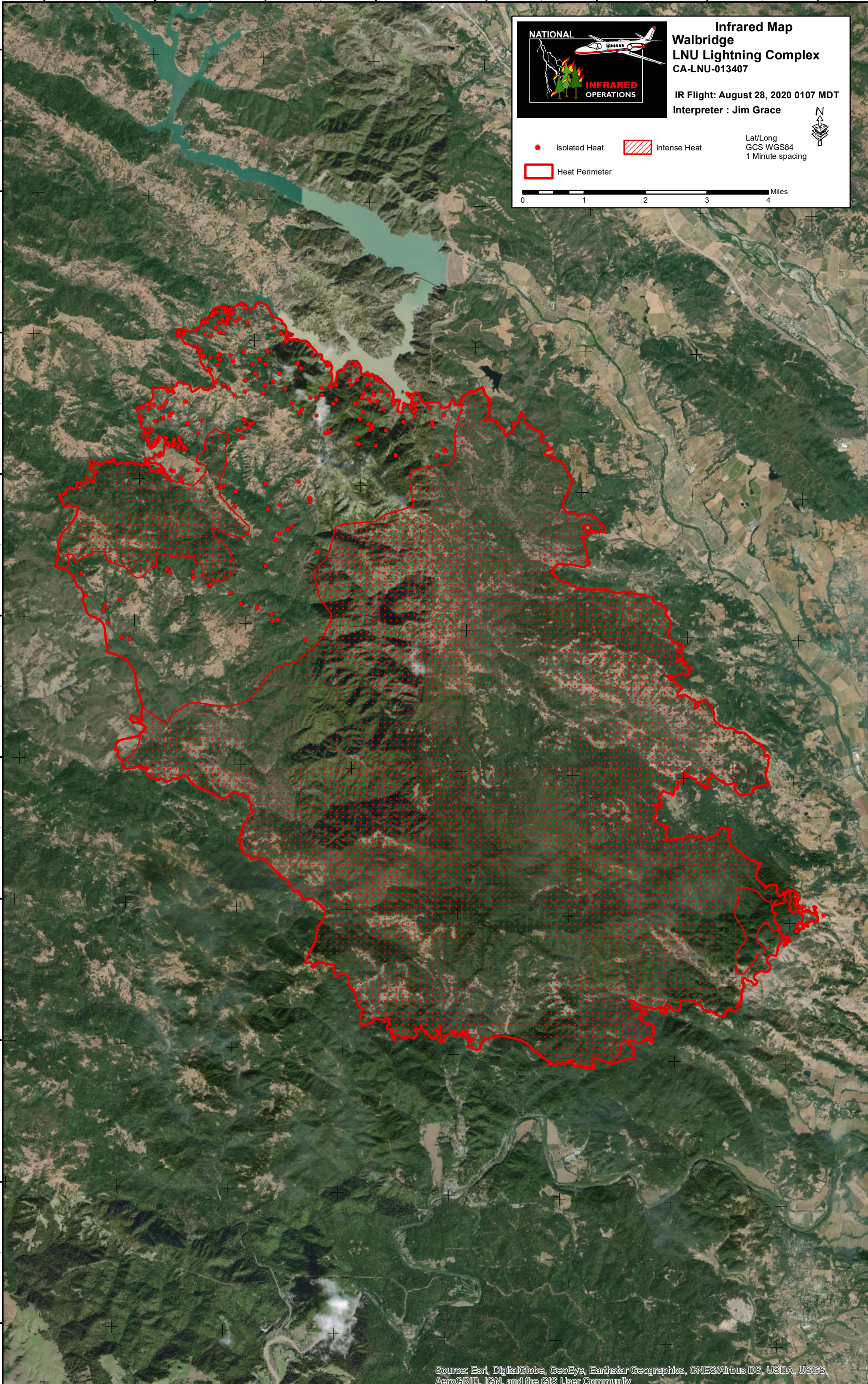
Infrared Map
Walbridge
LNU Lightning Complex
CA-LNU-013407

IR Flight: August 28, 2020 0107 MDT
 Interpreter : Jim Grace

Lat/Long
 GCS WGS84
 1 Minute spacing

● Isolated Heat ▨ Intense Heat
 □ Heat Perimeter

0 1 2 3 4 Miles

Source: Esri, DigitalGlobe, GeoEye, Earthstar Geographics, CNES/Airbus DS, USDA, USGS, AeroGRID, IGN, and the GIS User Community

123°6'0"W 123°4'0"W 123°2'0"W 123°0'0"W 122°58'0"W 122°56'0"W 122°54'0"W