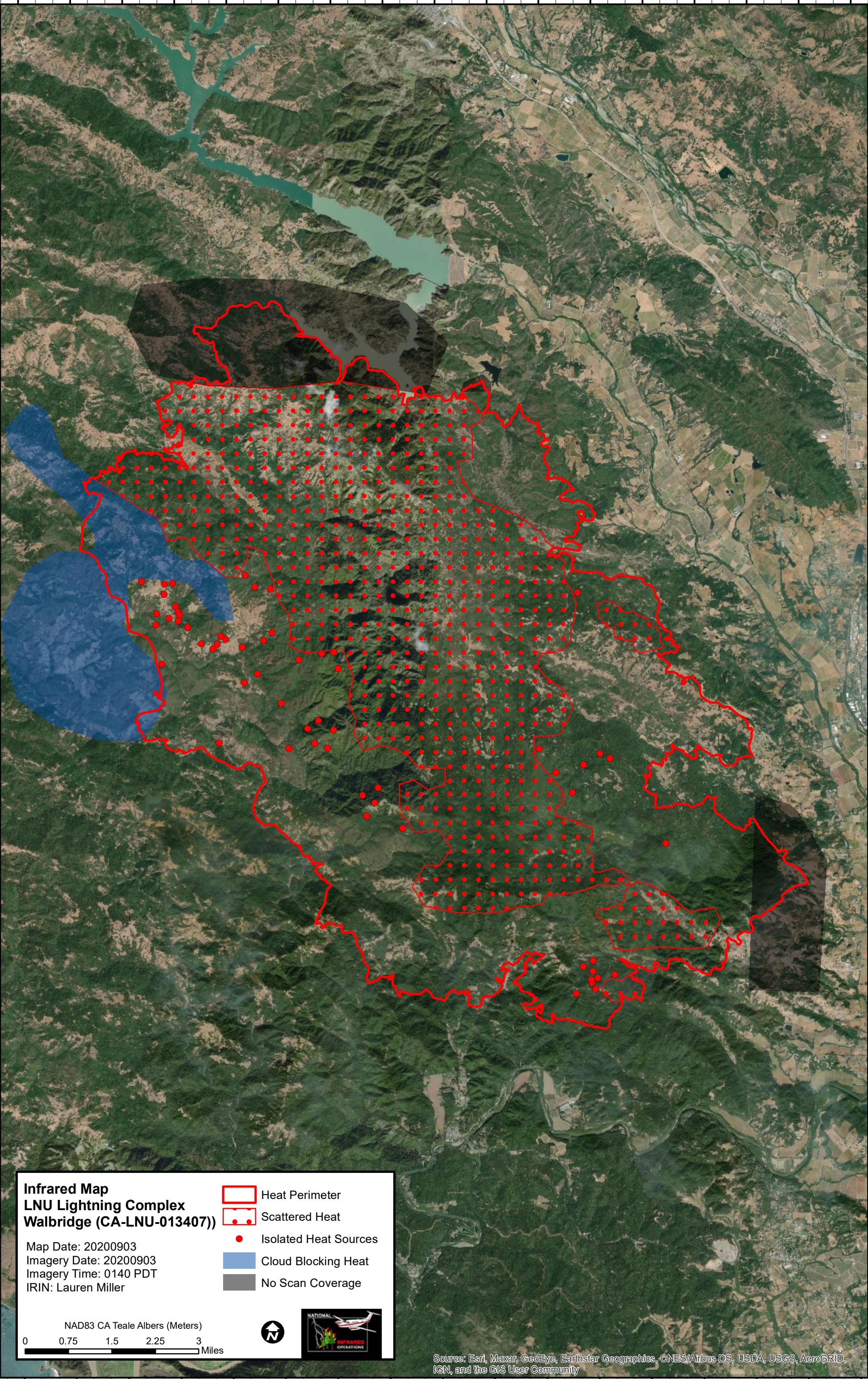







123°9'0"W 123°8'0"W 123°7'0"W 123°6'0"W 123°5'0"W 123°4'0"W 123°3'0"W 123°2'0"W 123°1'0"W 123°0'0"W 122°59'0"W 122°58'0"W 122°57'0"W 122°56'0"W 122°55'0"W 122°54'0"W 122°53'0"W



**Infrared Map
LNU Lightning Complex
Walbridge (CA-LNU-013407)**

Map Date: 20200903
Imagery Date: 20200903
Imagery Time: 0140 PDT
IRIN: Lauren Miller

-  Heat Perimeter
-  Scattered Heat
-  Isolated Heat Sources
-  Cloud Blocking Heat
-  No Scan Coverage

NAD83 CA Teale Albers (Meters)
0 0.75 1.5 2.25 3 Miles



Source: Esri, Maxar, GeoEye, Earthstar Geographics, CNES/Airbus DS, USDA, USGS, AeroGRID, IGN, and the GIS User Community

123°8'0"W 123°7'0"W 123°6'0"W 123°5'0"W 123°4'0"W 123°3'0"W 123°2'0"W 123°1'0"W 123°0'0"W 122°59'0"W 122°58'0"W 122°57'0"W 122°56'0"W 122°55'0"W 122°54'0"W 122°53'0"W 122°52'0"W