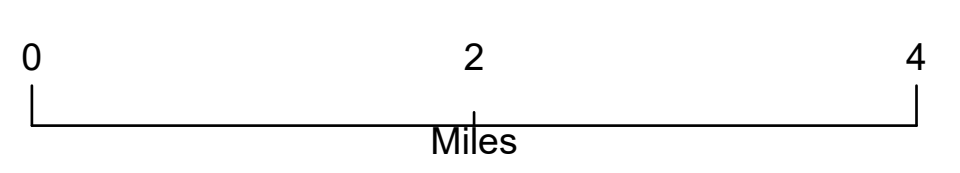
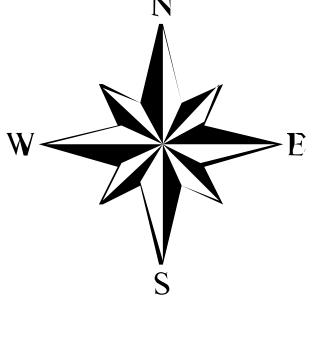


Scale: 1:55,000

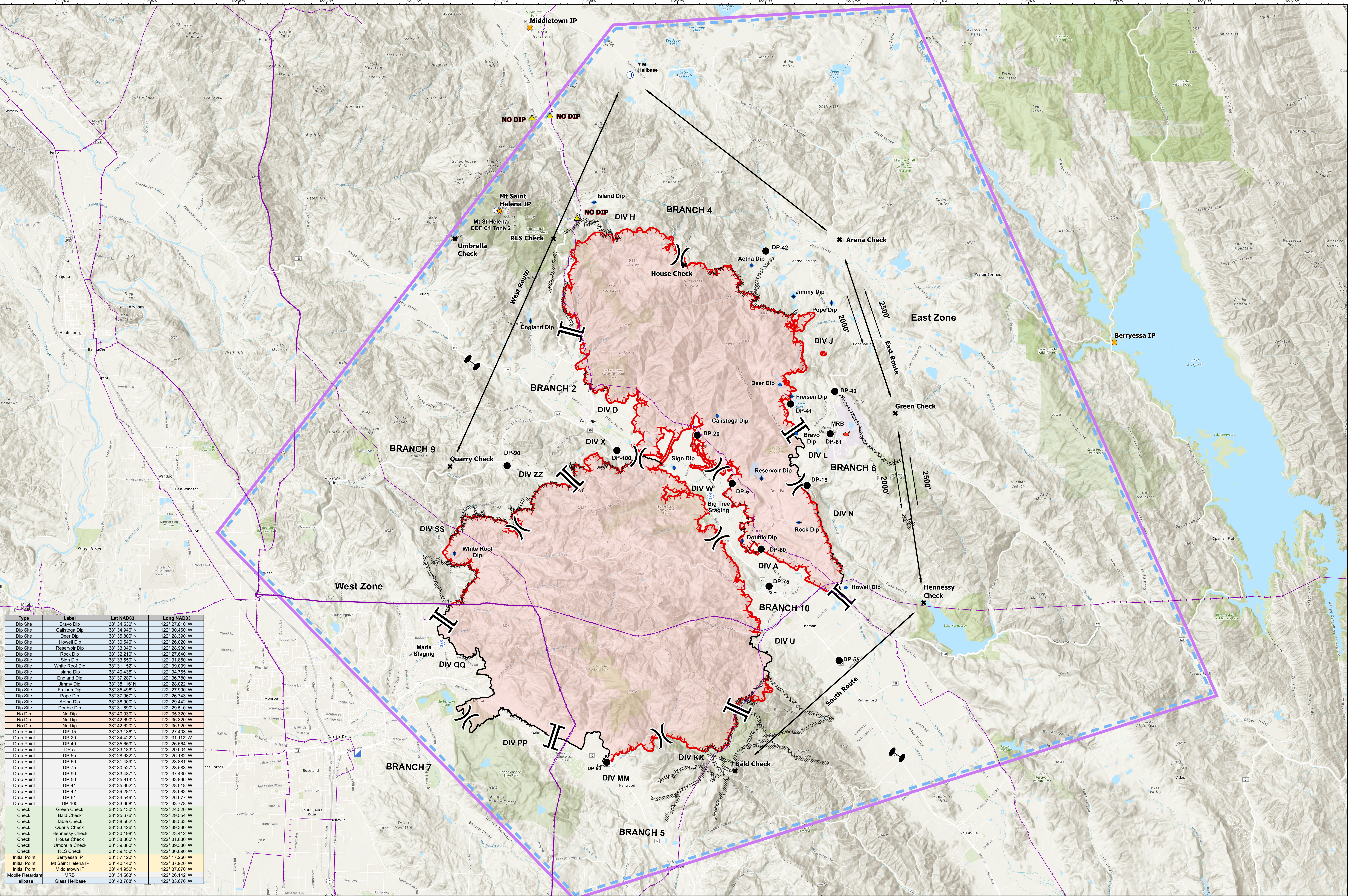


Air Operations Map
Glass Incident
CA-LNU-015947
October 4, 2020
0700 - 0700



Legend

- Dip Site (Blue circle with 'D')
- Drop Point (Black circle with 'DP')
- Helibase (Blue circle with 'H')
- Incident Command Post (Red circle with 'ICP')
- Repeater (Red circle with 'R')
- Retardant/Mud Pit (Red circle with 'M')
- Staging Area (Blue circle with 'S')
- Zone Break (Black line with 'Z')
- Division Break (Black line with 'D')
- Branch Break (Black line with 'B')
- Check (Black 'X')
- Initial Point (Yellow star)
- No Dip (Yellow triangle)
- Uncontrolled Fire Edge (Red line)
- Controlled Line (Black line)
- Completed Doser Line (Black line with 'X')
- R - R (Pink line)
- Transmission Lines (Purple line)
- Wildfire Daily Fire Perimeter (Red line)
- IFR (Red line)



Type	Label	Lat NAD83	Long NAD83
Dip Site	Bravo Dip	38° 34.530' N	122° 27.510' W
Dip Site	Calistoga Dip	38° 34.940' N	122° 30.460' W
Dip Site	Deer Dip	38° 35.800' N	122° 28.390' W
Dip Site	Howell Dip	38° 30.540' N	122° 26.020' W
Dip Site	Reservoir Dip	38° 33.340' N	122° 28.930' W
Dip Site	Rock Dip	38° 32.210' N	122° 27.840' W
Dip Site	Sign Dip	38° 33.550' N	122° 31.850' W
Dip Site	White Roof Dip	38° 31.152' N	122° 39.099' W
Dip Site	Island Dip	38° 40.435' N	122° 34.765' W
Dip Site	England Dip	38° 37.287' N	122° 36.780' W
Dip Site	Jimmy Dip	38° 38.116' N	122° 28.022' W
Dip Site	Freisen Dip	38° 35.496' N	122° 27.900' W
Dip Site	Pope Dip	38° 37.967' N	122° 26.743' W
Dip Site	Aetna Dip	38° 38.800' N	122° 29.442' W
Dip Site	Double Dip	38° 31.890' N	122° 29.510' W
No Dip	No Dip	38° 40.030' N	122° 35.320' W
No Dip	No Dip	38° 42.690' N	122° 36.320' W
No Dip	No Dip	38° 42.620' N	122° 36.920' W
Drop Point	DP-15	38° 33.186' N	122° 27.403' W
Drop Point	DP-20	38° 34.422' N	122° 31.112' W
Drop Point	DP-40	38° 35.659' N	122° 26.564' W
Drop Point	DP-5	38° 33.183' N	122° 29.904' W
Drop Point	DP-55	38° 28.632' N	122° 26.162' W
Drop Point	DP-60	38° 31.486' N	122° 28.981' W
Drop Point	DP-75	38° 30.527' N	122° 28.583' W
Drop Point	DP-90	38° 33.487' N	122° 37.430' W
Drop Point	DP-50	38° 25.814' N	122° 33.836' W
Drop Point	DP-41	38° 35.922' N	122° 28.018' W
Drop Point	DP-42	38° 39.281' N	122° 28.983' W
Drop Point	DP-61	38° 34.549' N	122° 26.677' W
Drop Point	DP-100	38° 33.968' N	122° 33.778' W
Check	Green Check	38° 35.130' N	122° 24.520' W
Check	Bald Check	38° 35.876' N	122° 29.554' W
Check	Table Check	38° 38.562' N	122° 38.563' W
Check	Quarry Check	38° 33.426' N	122° 39.330' W
Check	Hennessy Check	38° 30.198' N	122° 23.412' W
Check	House Check	38° 38.860' N	122° 31.680' W
Check	Umbrella Check	38° 39.380' N	122° 39.380' W
Check	RLS Check	38° 39.450' N	122° 36.090' W
Initial Point	Berryessa IP	38° 37.120' N	122° 17.260' W
Initial Point	Mt Saint Helena IP	38° 40.140' N	122° 37.620' W
Initial Point	Middletown IP	38° 44.950' N	122° 37.070' W
Mobile Retardant	MRB	38° 34.563' N	122° 26.142' W
Helibase	Glass Helibase	38° 43.788' N	122° 33.676' W