



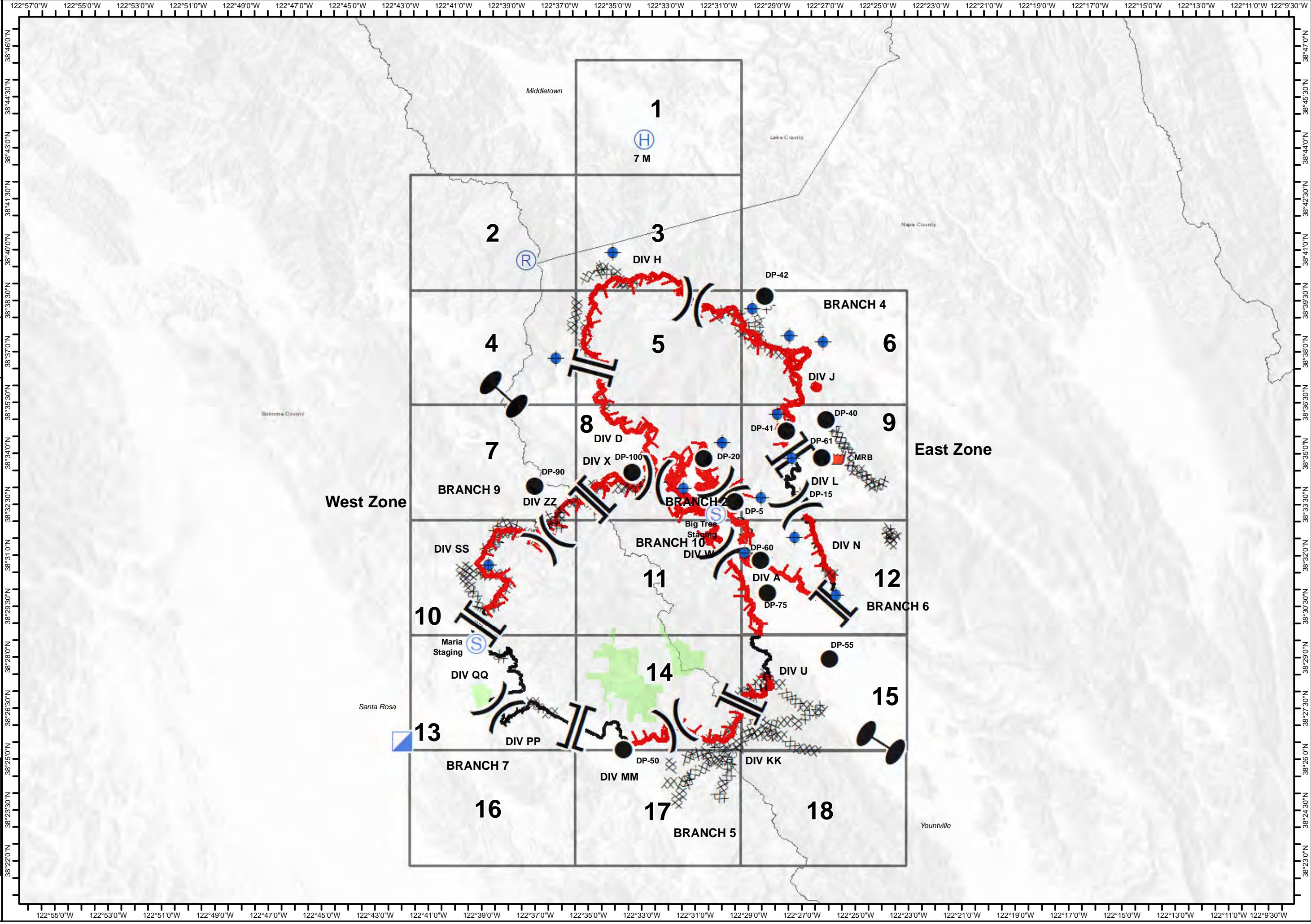
Glass Incident
CA-LNU-015947
Oct 4, 2020
 0700 - 0700

IAP Map
 Page 0

- Dip Site
- Drop Point
- Helibase
- Incident Command Post
- Repeater
- Retardant/Mud Pit
- Staging Area
- Zone Break
- Division Break
- Branch Break
- Uncontrolled Fire Edge
- Contained Line
- Completed Dozer Line
- Completed Hand Line
- Road as Completed Line
- County Boundary
- Sonoma County Parks

0 1.5 3 Miles

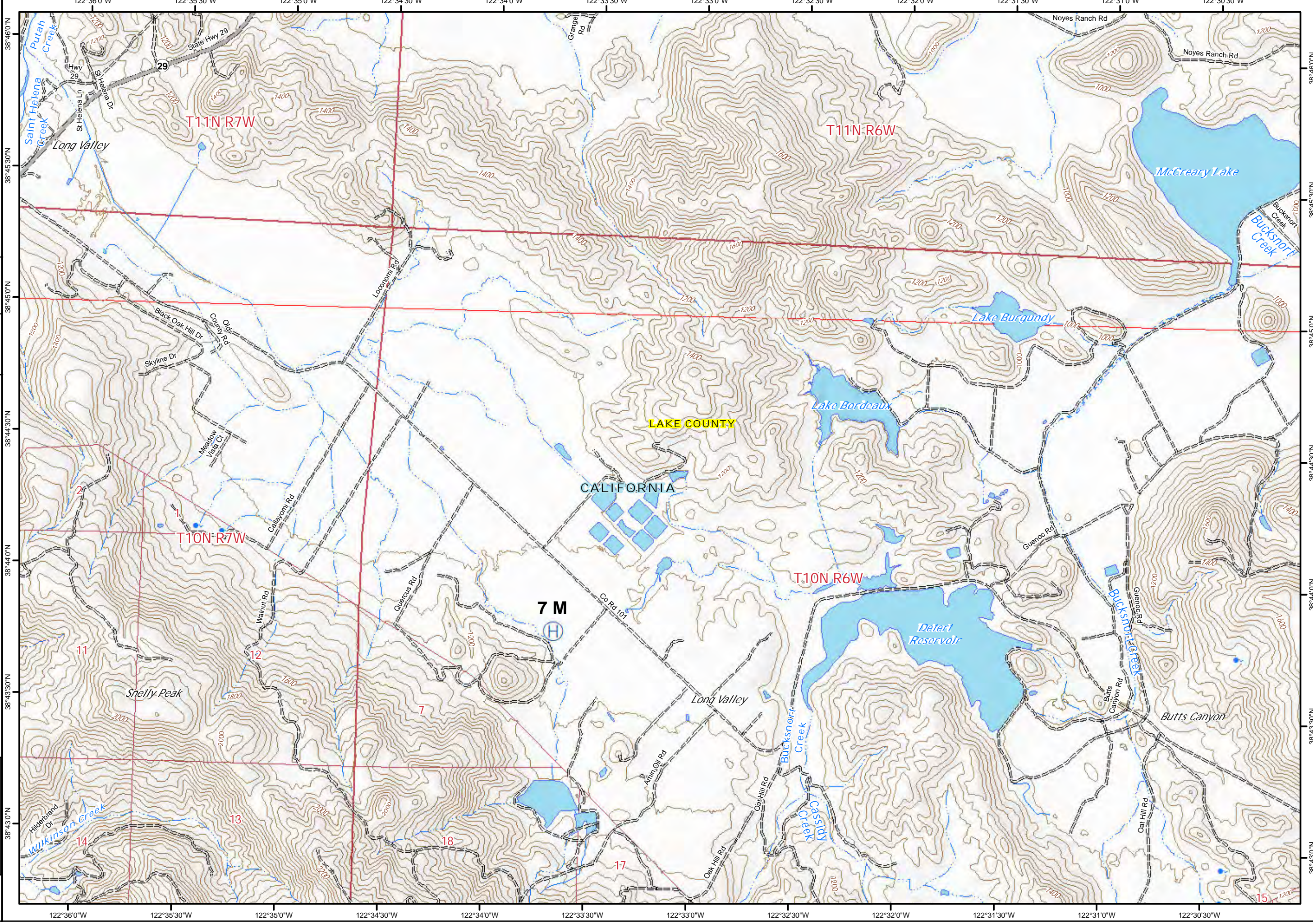
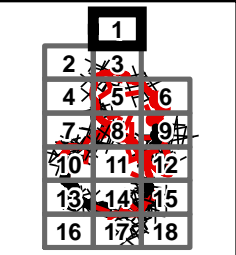
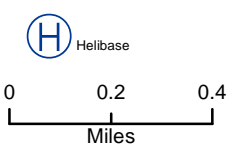
1		
2	3	
4	5	6
7	8	9
10	11	12
13	14	15
16	17	18





Glass Incident
CA-LNU-015947
Oct 4, 2020
0700 - 0700

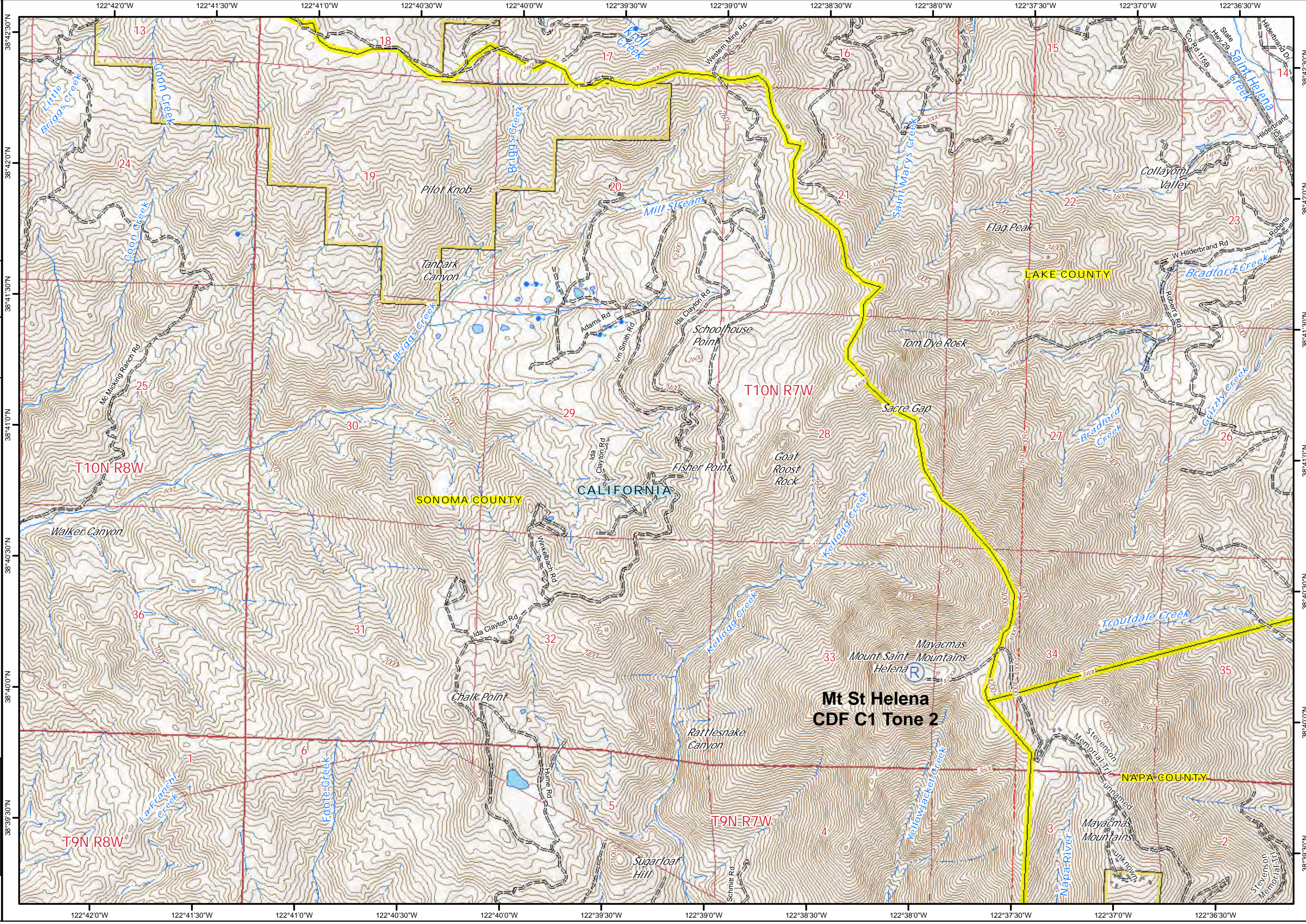
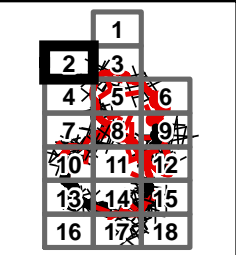
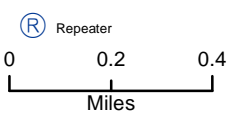
IAP Map
Page 1





Glass Incident
CA-LNU-015947
Oct 4, 2020
0700 - 0700

IAP Map
Page 2





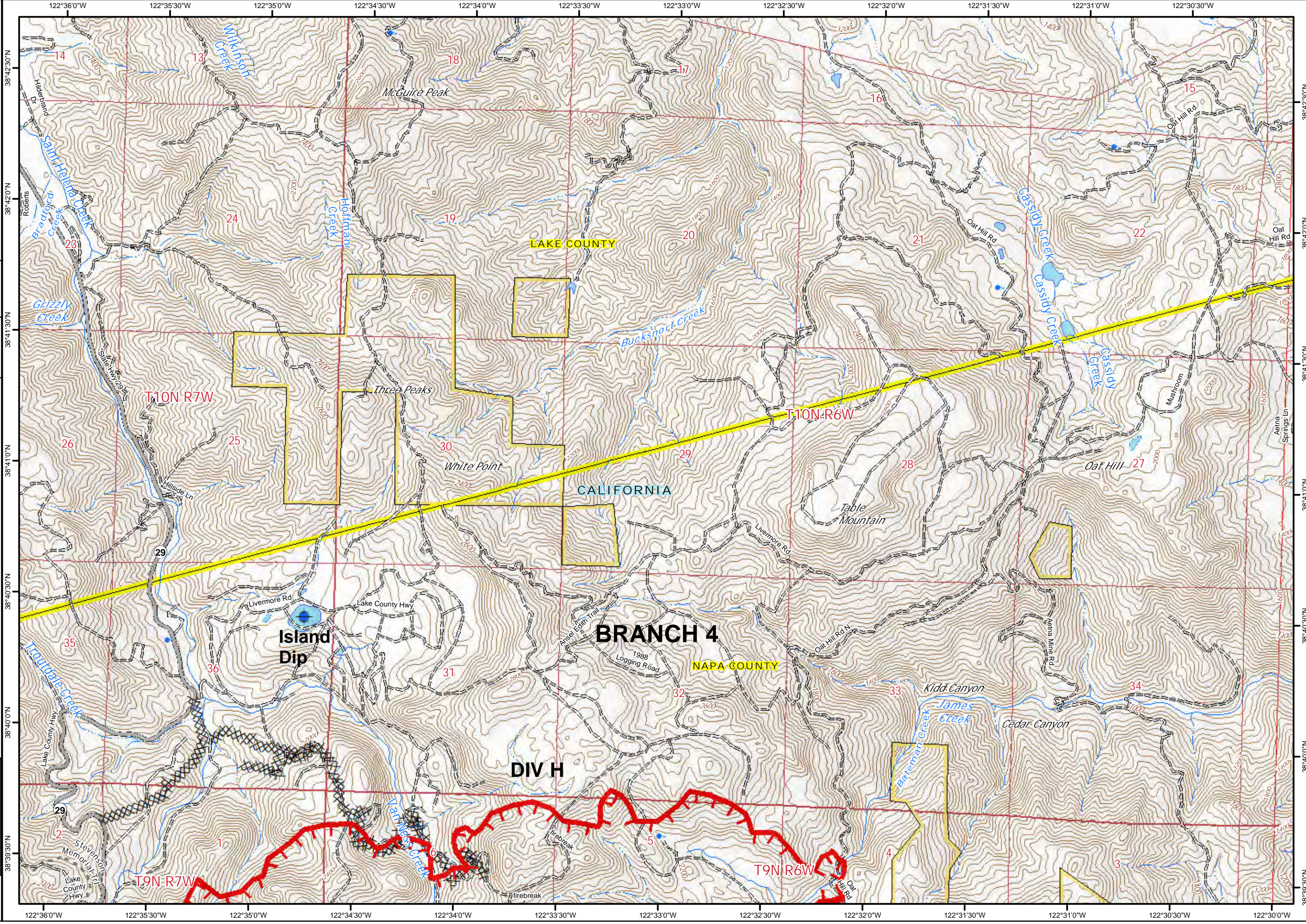
Glass Incident
CA-LNU-015947
Oct 4, 2020
0700 - 0700

IAP Map
Page 3

Dip Site
 Uncontrolled Fire Edge
 Completed Dozer Line

0 0.2 0.4
Miles

1
2 3
4 5 6
7 8 9
10 11 12
13 14 15
16 17 18





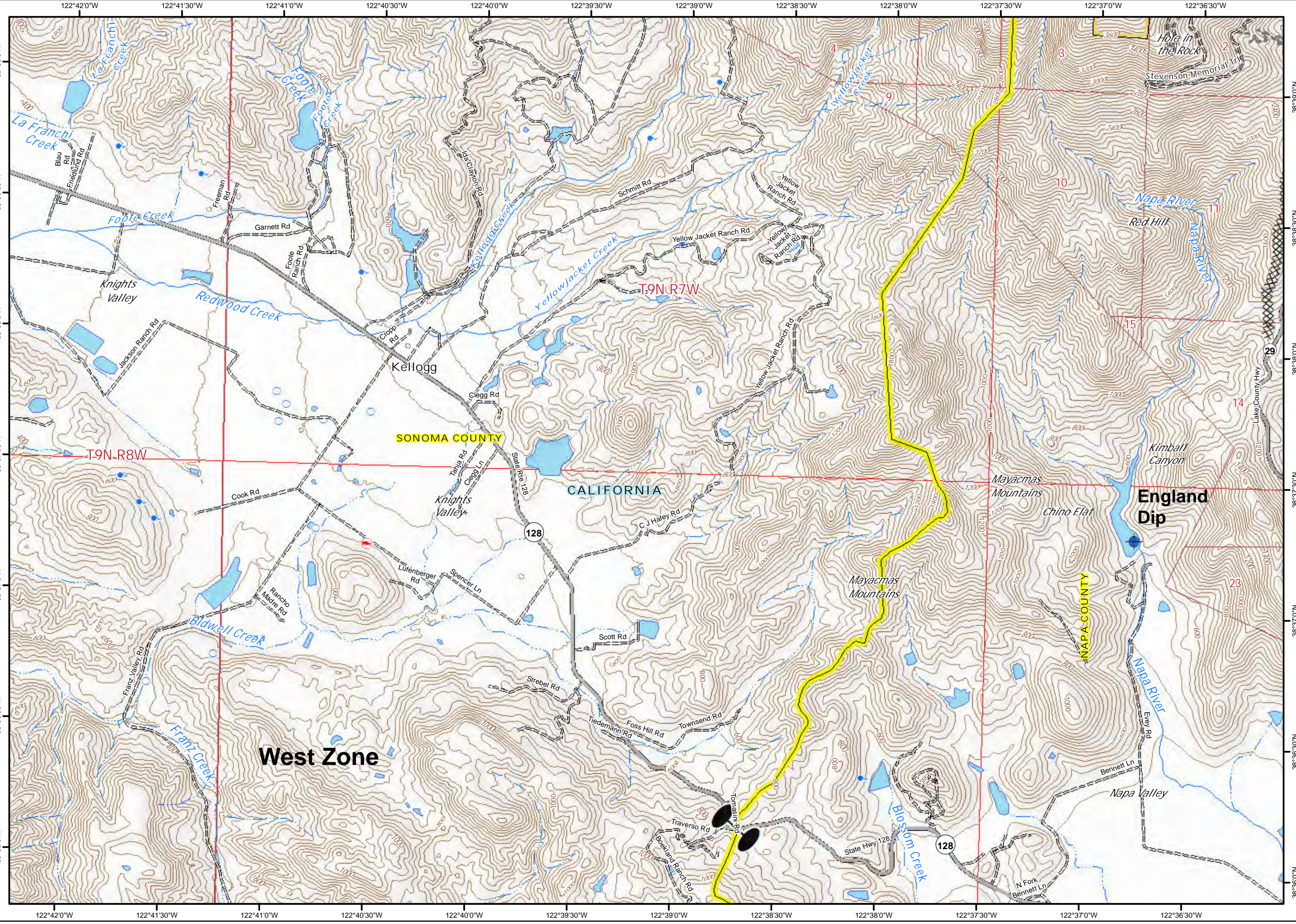
Glass Incident
CA-LNU-015947
Oct 4, 2020
0700 - 0700

IAP Map
Page 4

Dip Site
 Zone Break
 Completed Dozer Line

0 0.2 0.4
Miles

1		
2	3	
4	5	6
7	8	9
10	11	12
13	14	15
16	17	18



122°42'0"W 122°41'30"W 122°41'0"W 122°40'30"W 122°40'0"W 122°39'30"W 122°39'0"W 122°38'30"W 122°38'0"W 122°37'30"W 122°37'0"W 122°36'30"W



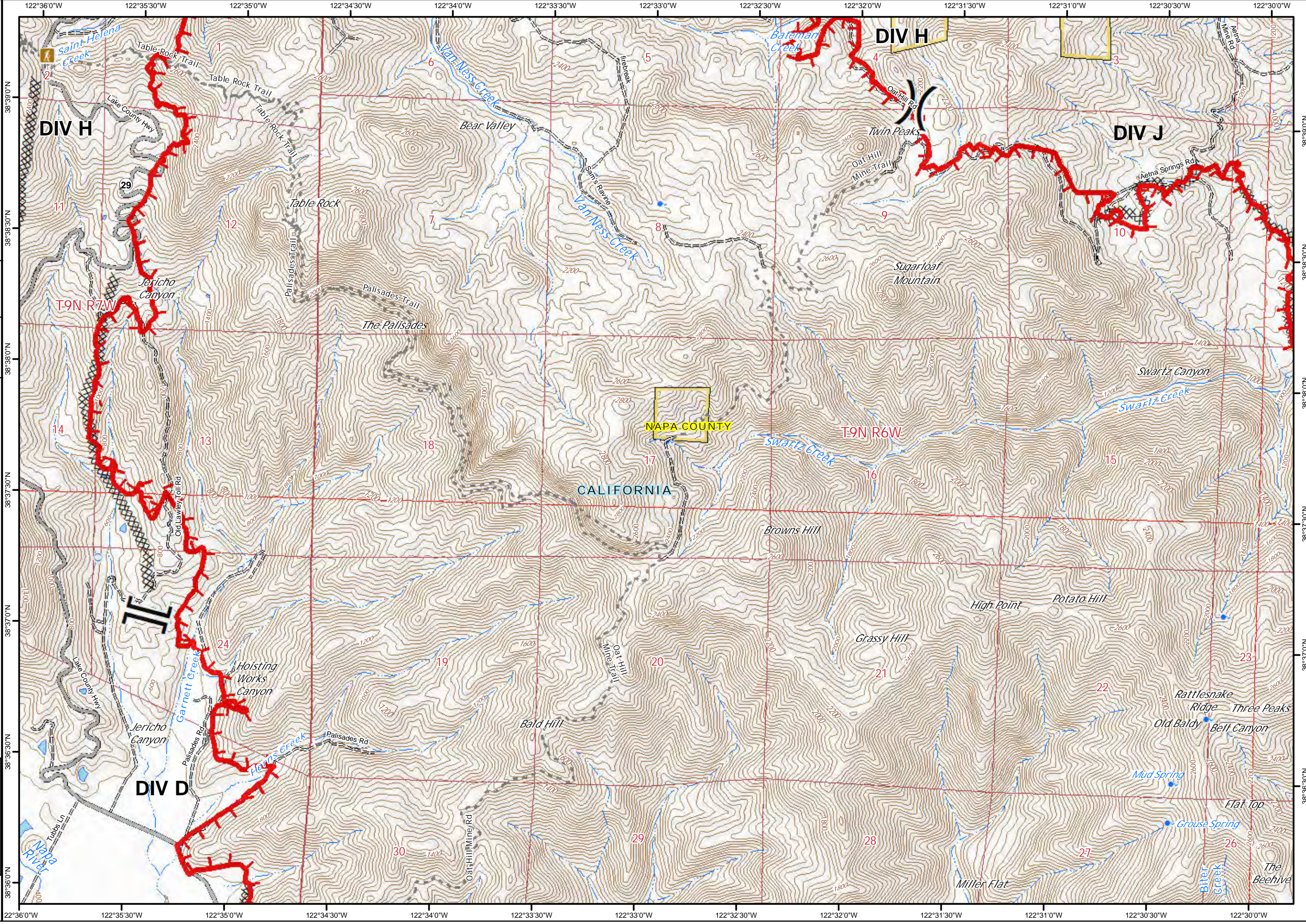
Glass Incident
CA-LNU-015947
Oct 4, 2020
0700 - 0700

IAP Map
Page 5

)) Division Break
 || Branch Break
 Uncontrolled Fire Edge
 Completed Dozer Line
 Completed Hand Line

0 0.2 0.4
Miles

1
2 3
4 5 6
7 8 9
10 11 12
13 14 15
16 17 18





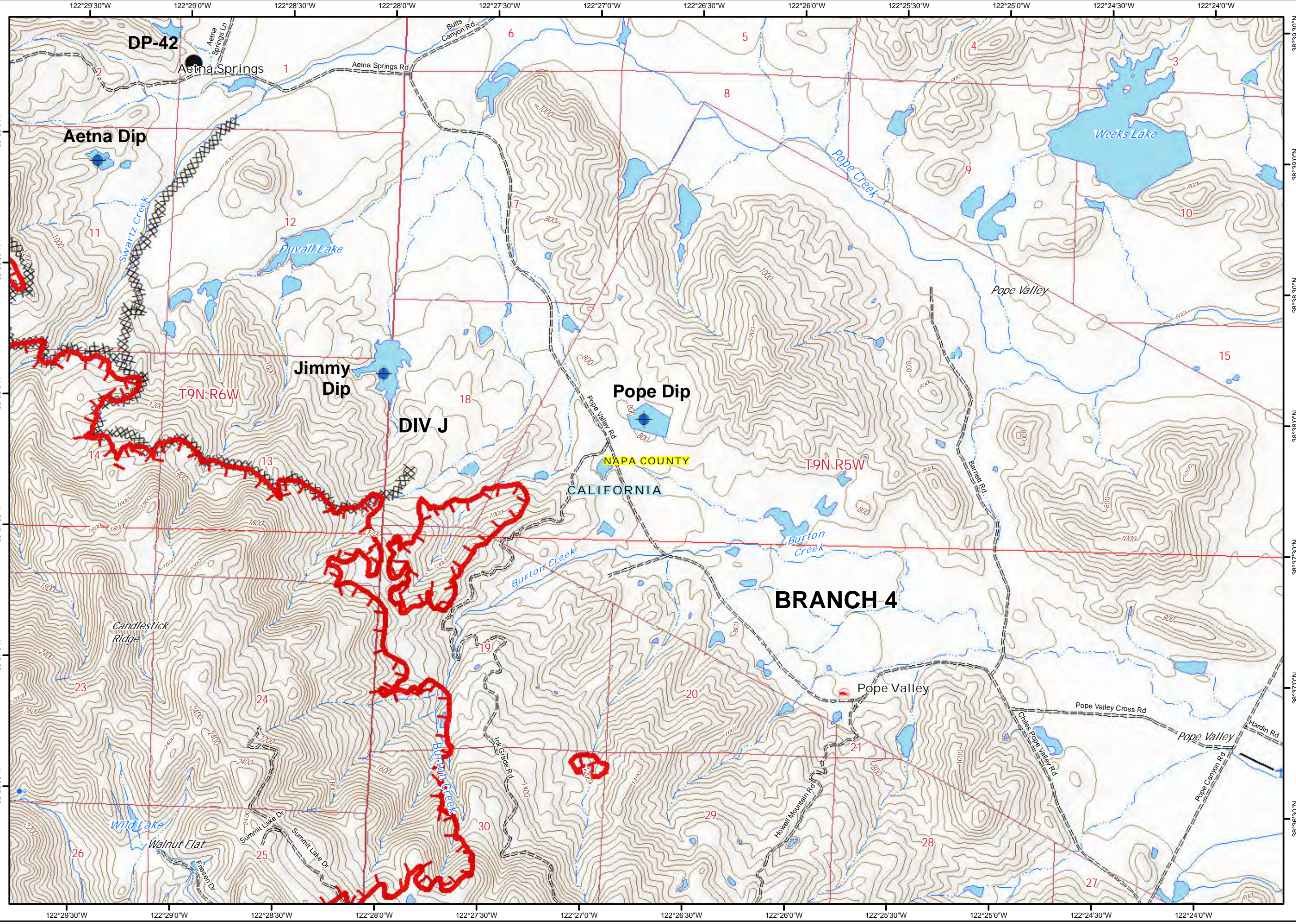
Glass Incident
CA-LNU-015947
Oct 4, 2020
0700 - 0700

IAP Map
Page 6

- Dip Site
- Drop Point
- Uncontrolled Fire Edge
- Completed Dozer Line

0 0.2 0.4
Miles

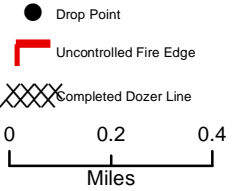
1
2 3
4 5 6
7 8 9
10 11 12
13 14 15
16 17 18



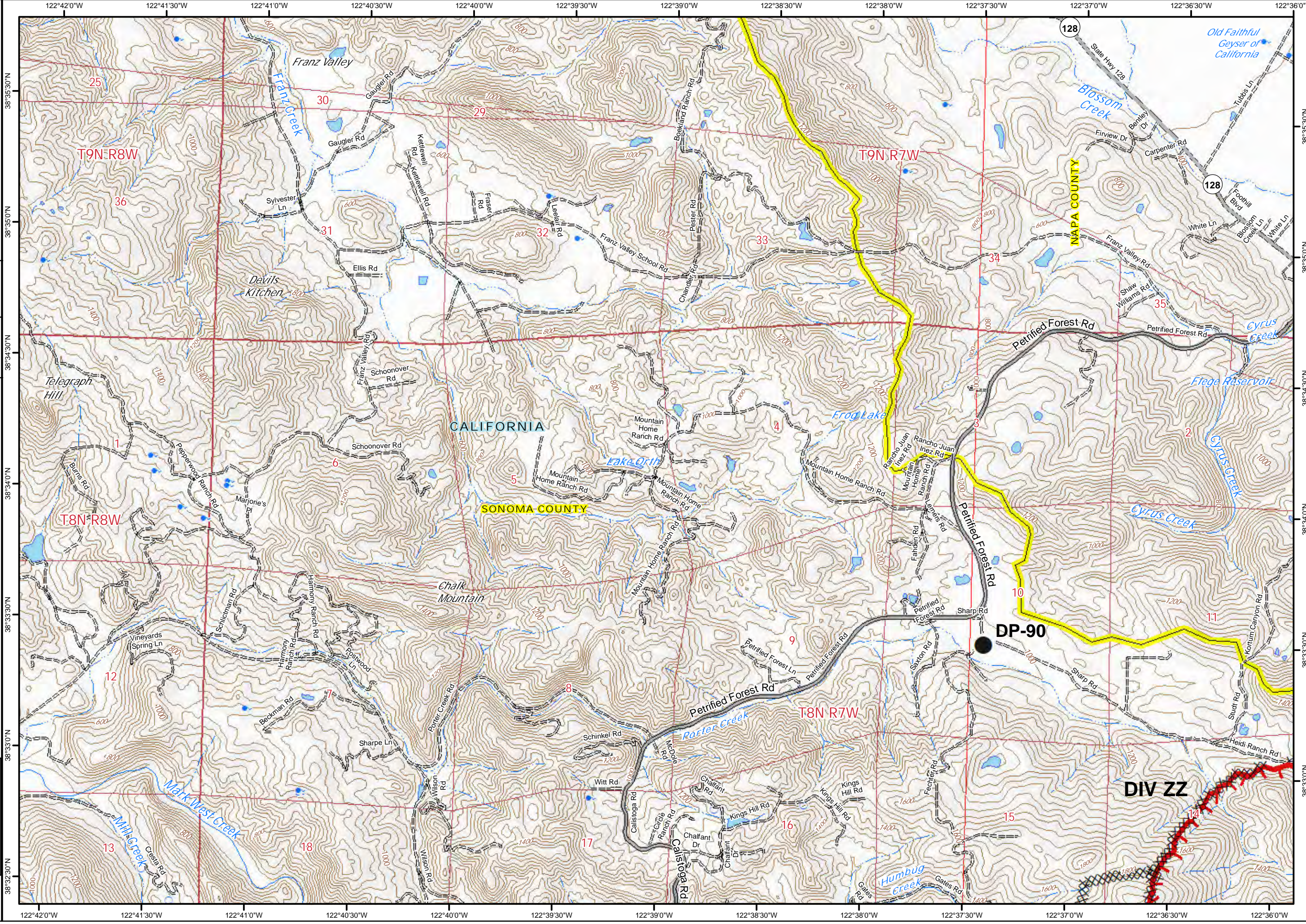


Glass Incident
 CA-LNU-015947
 Oct 4, 2020
 0700 - 0700

IAP Map
 Page 7



1
2 3
4 5 6
7 8 9
10 11 12
13 14 15
16 17 18

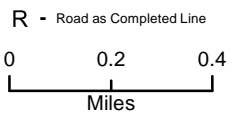




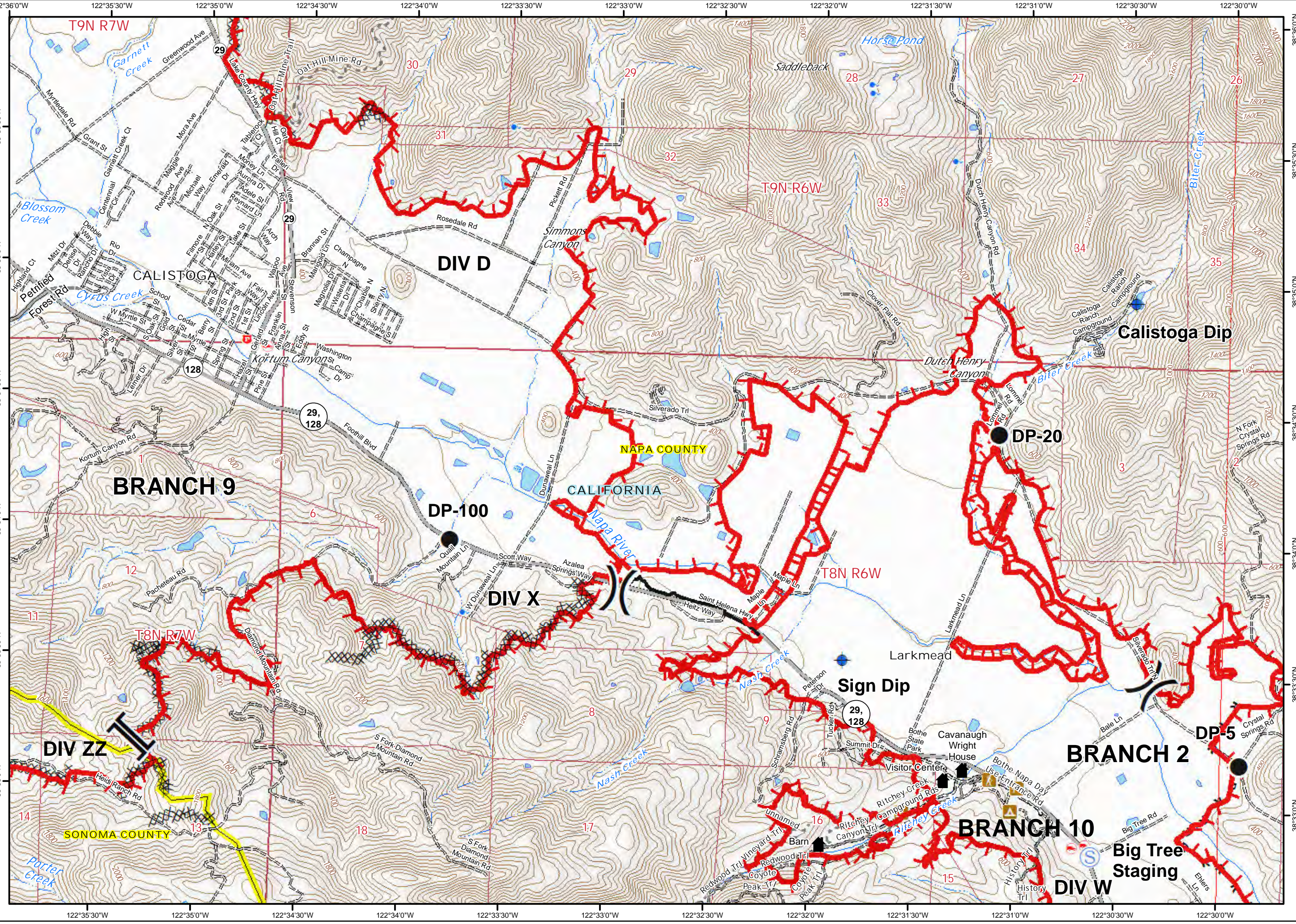
Glass Incident
CA-LNU-015947
Oct 4, 2020
0700 - 0700

IAP Map
Page 8

- Dip Site
- Drop Point
- Staging Area
- Division Break
- Branch Break
- Historic Building
- Uncontrolled Fire Edge
- Contained Line
- Completed Dozer Line
- Completed Hand Line
- Road as Completed Line



1
2 3
4 5 6
7 8 9
10 11 12
13 14 15
16 17 18

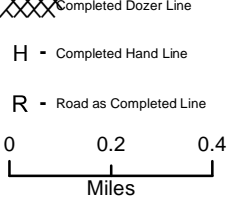




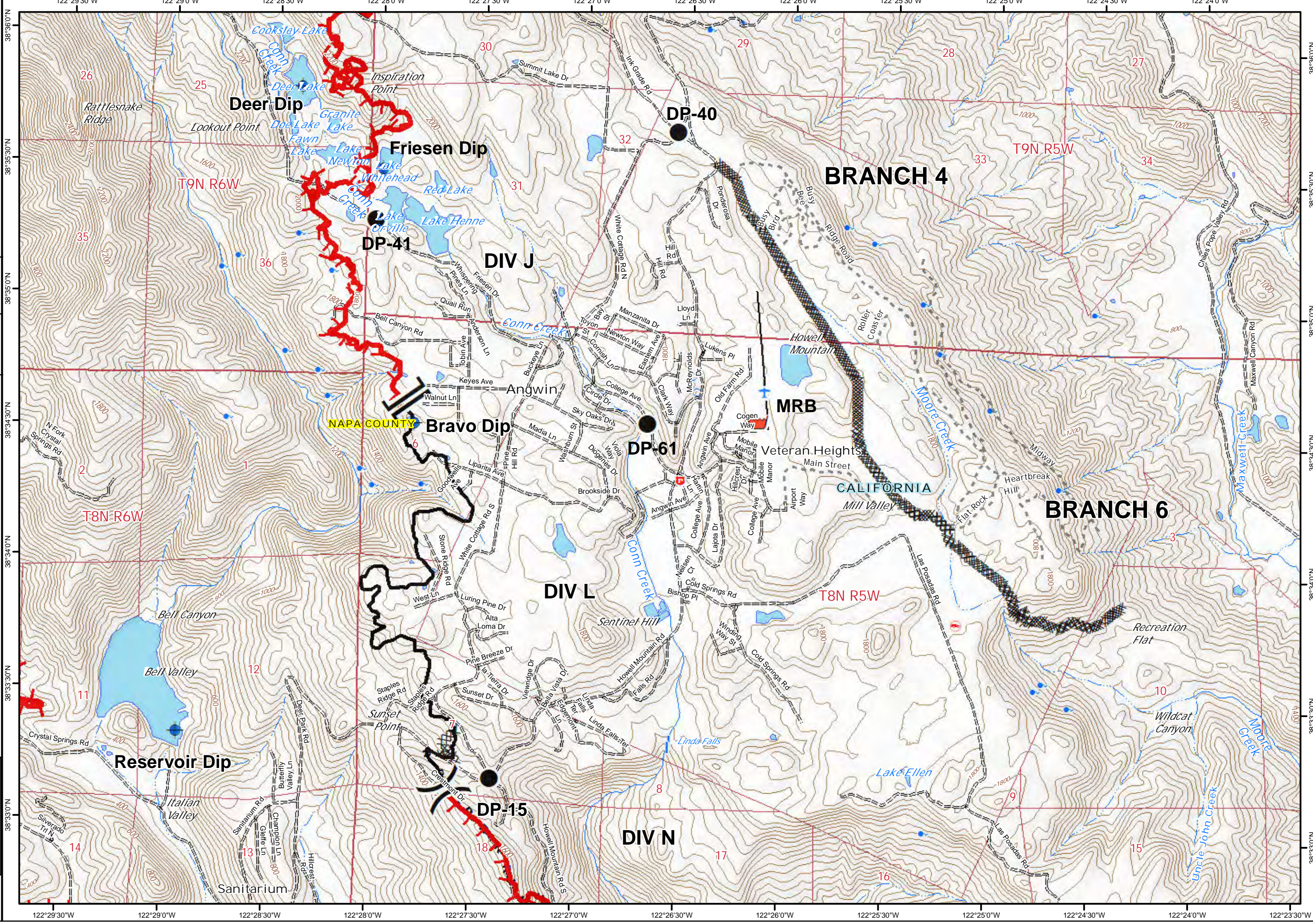
Glass Incident
 CA-LNU-015947
 Oct 4, 2020
 0700 - 0700

IAP Map
 Page 9

- Dip Site
- Drop Point
- Retardant/Mud Pit
- Division Break
- Branch Break
- Uncontrolled Fire Edge
- Contained Line
- Completed Dozer Line
- Completed Hand Line
- Road as Completed Line



1		
2	3	
4	5	6
7	8	9
10	11	12
13	14	15
16	17	18





Glass Incident
CA-LNU-015947
Oct 4, 2020
0700 - 0700

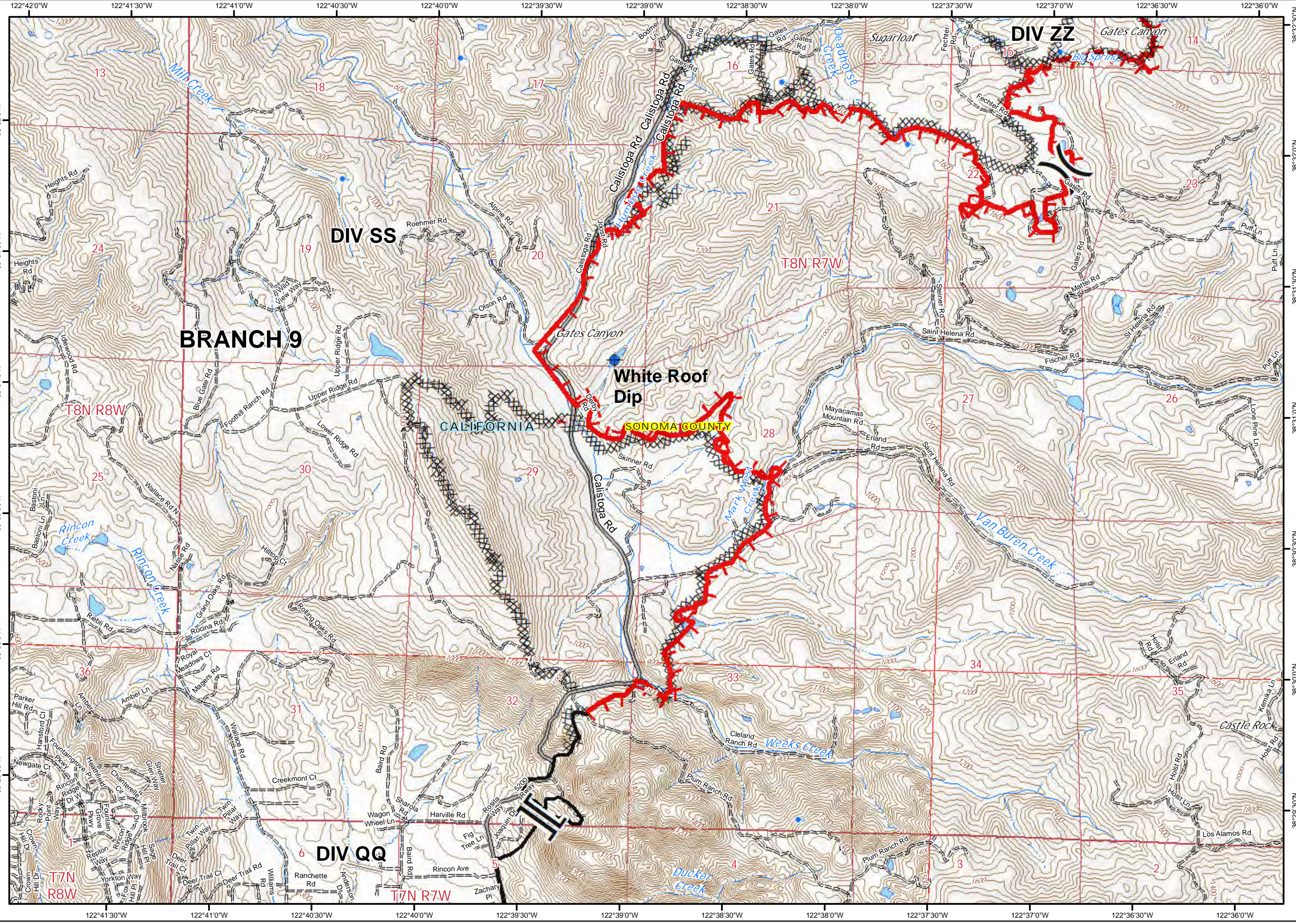
IAP Map
Page 10

Legend:

- Dip Site
- Division Break
- Branch Break
- Uncontrolled Fire Edge
- Contained Line
- Completed Dozer Line

Scale: 0 0.2 0.4 Miles

1	2	3
4	5	6
7	8	9
10	11	12
13	14	15
16	17	18



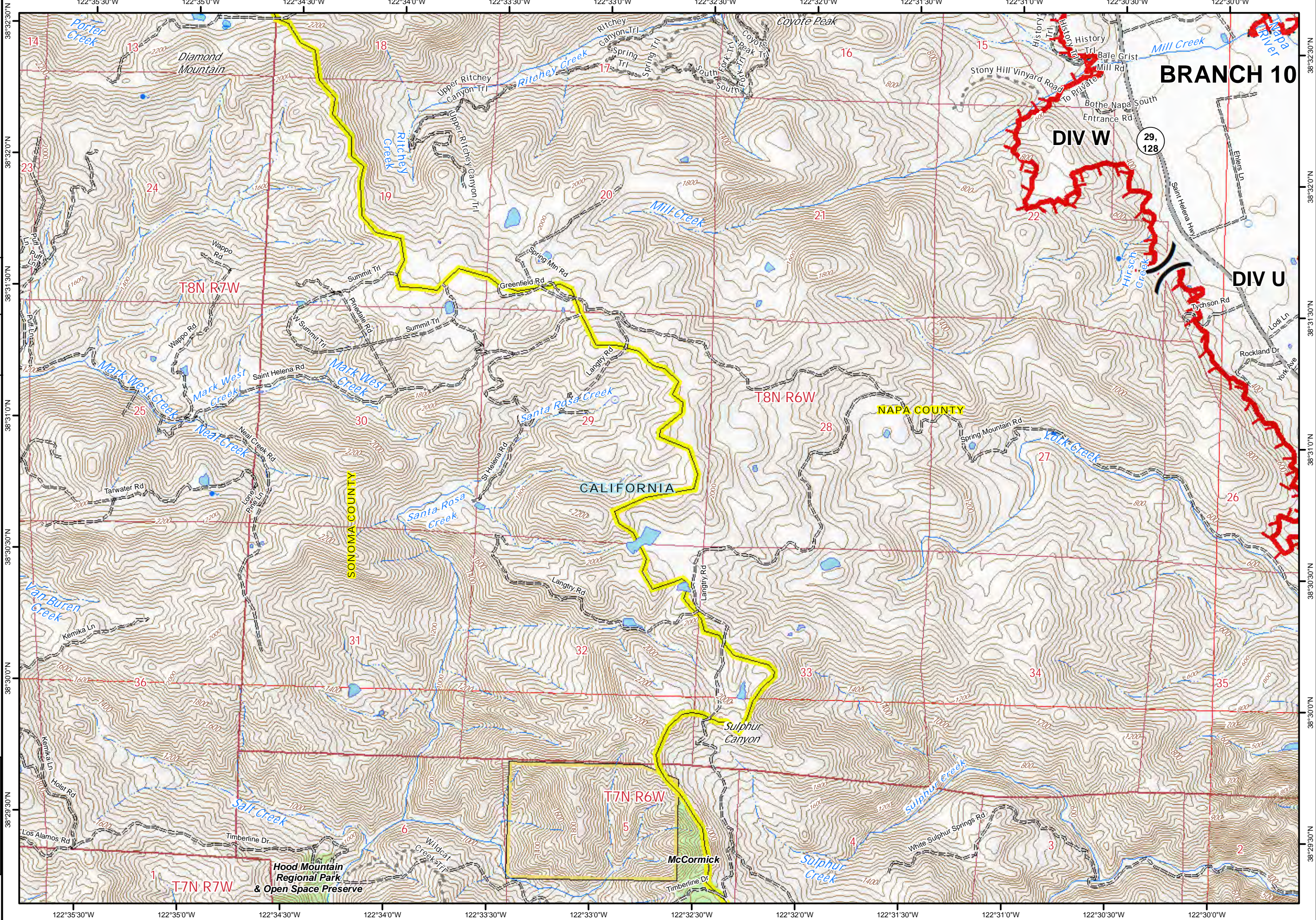


Glass Incident
CA-LNU-015947
Oct 4, 2020
0700 - 0700

IAP Map
Page 11

)(Division Break
 [Red Line] Uncontrolled Fire Edge
 R - Road as Completed Line
 [Green Area] Sonoma County Parks
 0 0.2 0.4
 Miles

1
2 3
4 5 6
7 8 9
10 11 12
13 14 15
16 17 18



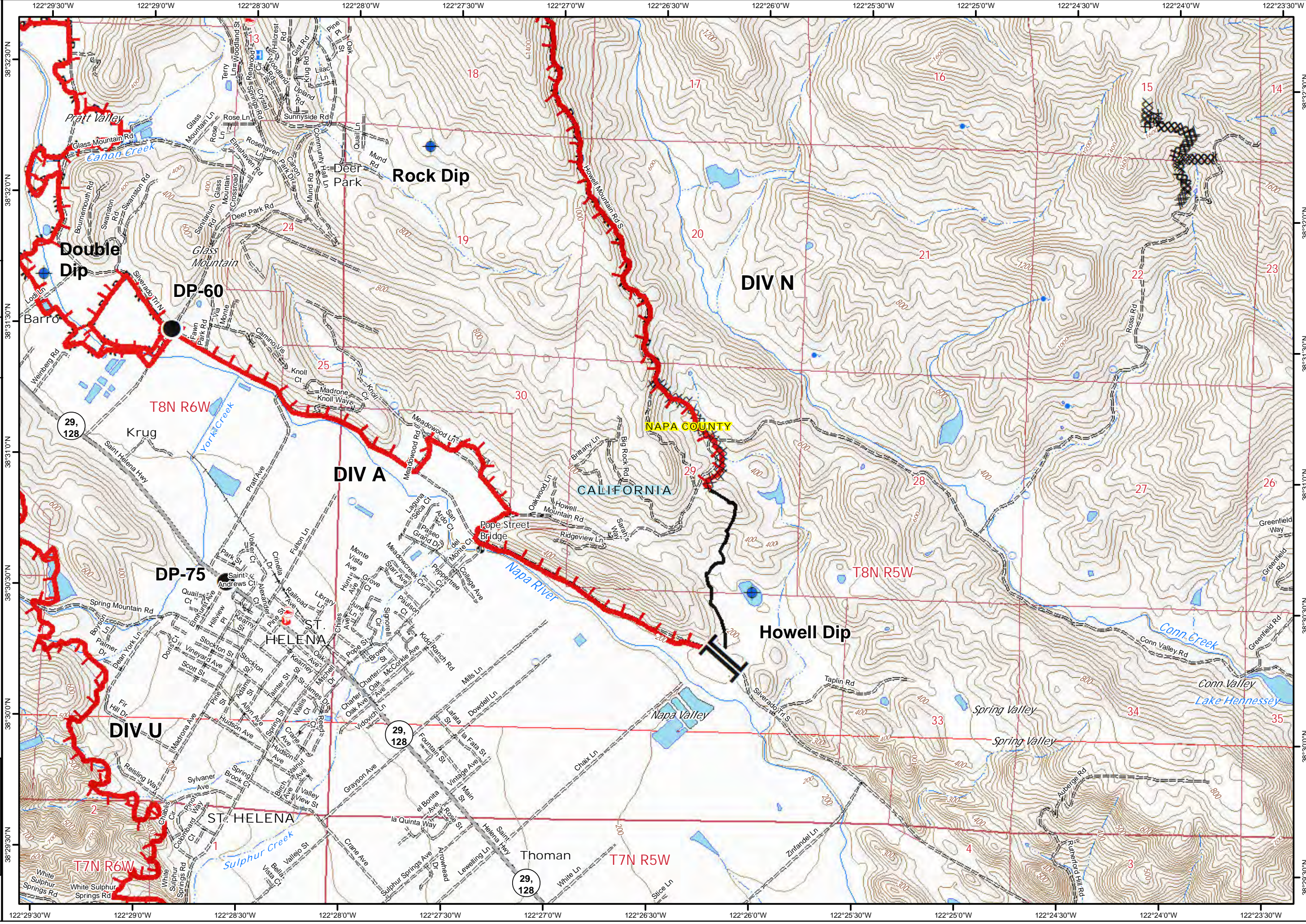


Glass Incident
CA-LNU-015947
Oct 4, 2020
0700 - 0700

IAP Map
Page 12

- Dip Site
- Drop Point
- Uncontrolled Fire Edge
- Contained Line
- Completed Dozer Line
- Completed Hand Line
- Road as Completed Line

1		
2	3	
4	5	6
7	8	9
10	11	12
13	14	15
16	17	18





Glass Incident
CA-LNU-015947
Oct 4, 2020
0700 - 0700

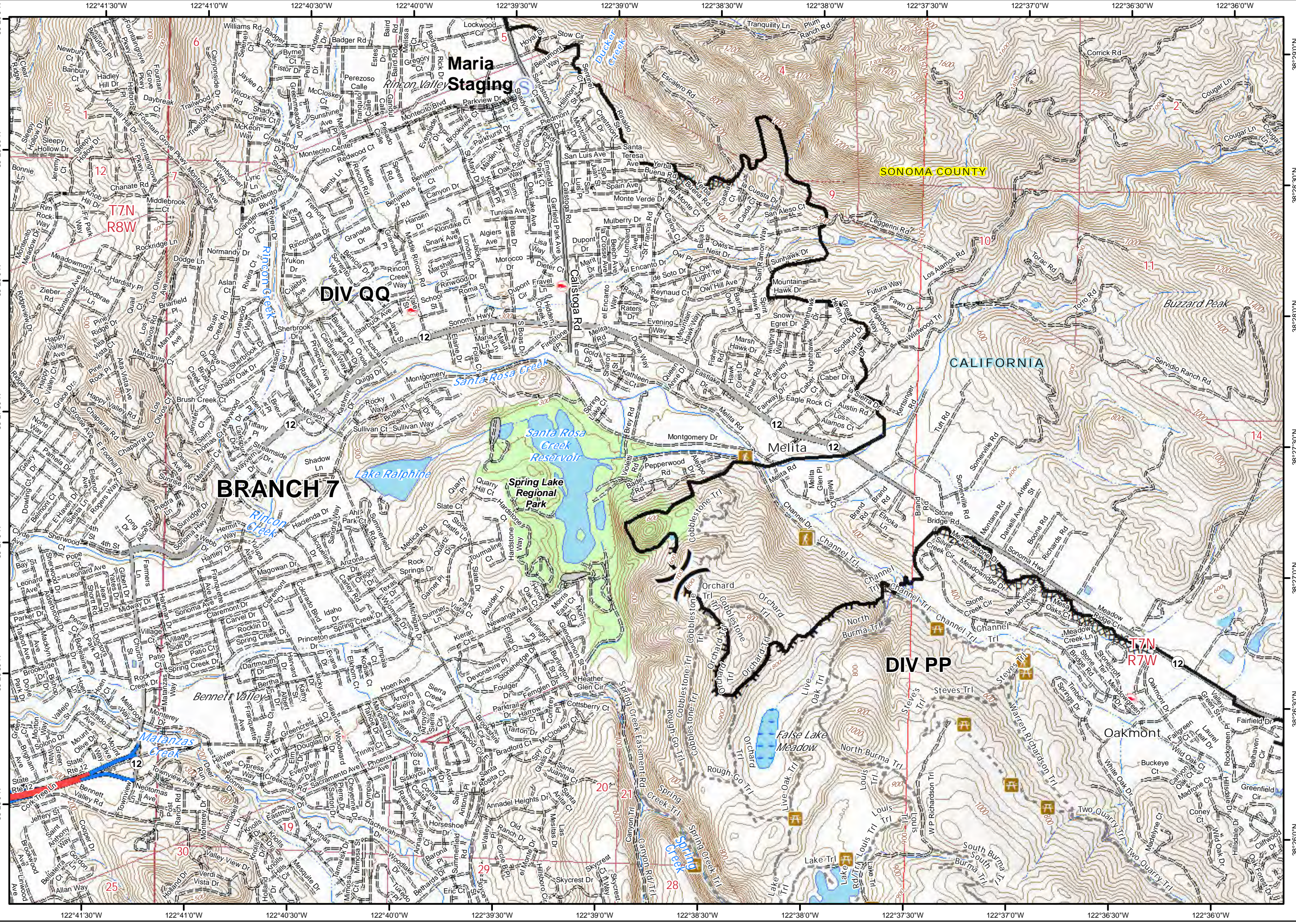
IAP Map
Page 13

S Staging Area
) Division Break
— Contained Line
XXXX Completed Dozer Line
H - Completed Hand Line

0 0.2 0.4
Miles

1	2	3
4	5	6
7	8	9
10	11	12
13	14	15
16	17	18

Paul



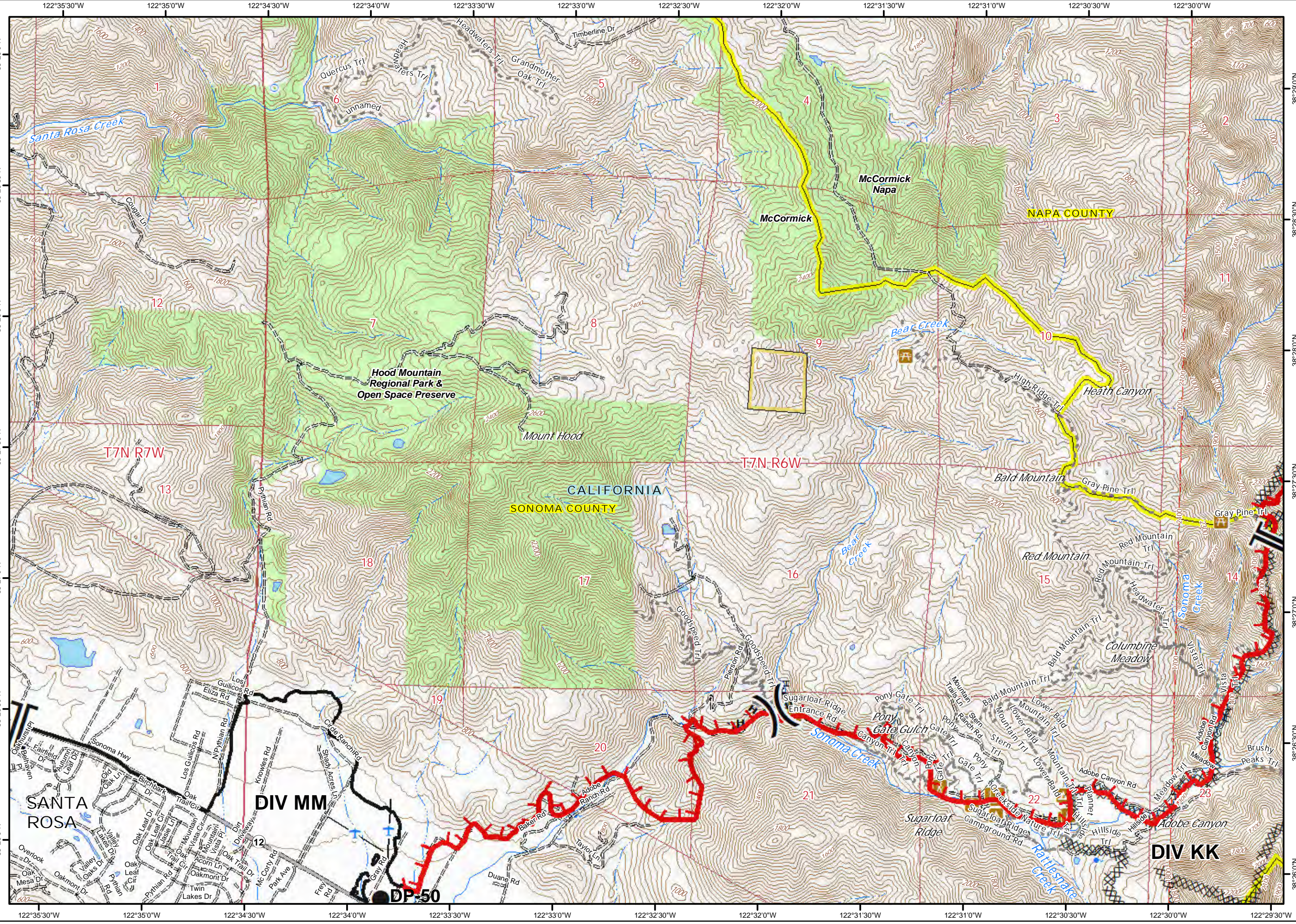


Glass Incident
CA-LNU-015947
Oct 4, 2020
0700 - 0700

IAP Map
Page 14

- Drop Point
 -) (Division Break
 - || Branch Break
 - Uncontrolled Fire Edge
 - Contained Line
 - XXXX Completed Dozer Line
 - H - Completed Hand Line
 - Sonoma County Parks
- 0 0.2 0.4
Miles

1
2 3
4 5 6
7 8 9
10 11 12
13 14 15
16 17 18





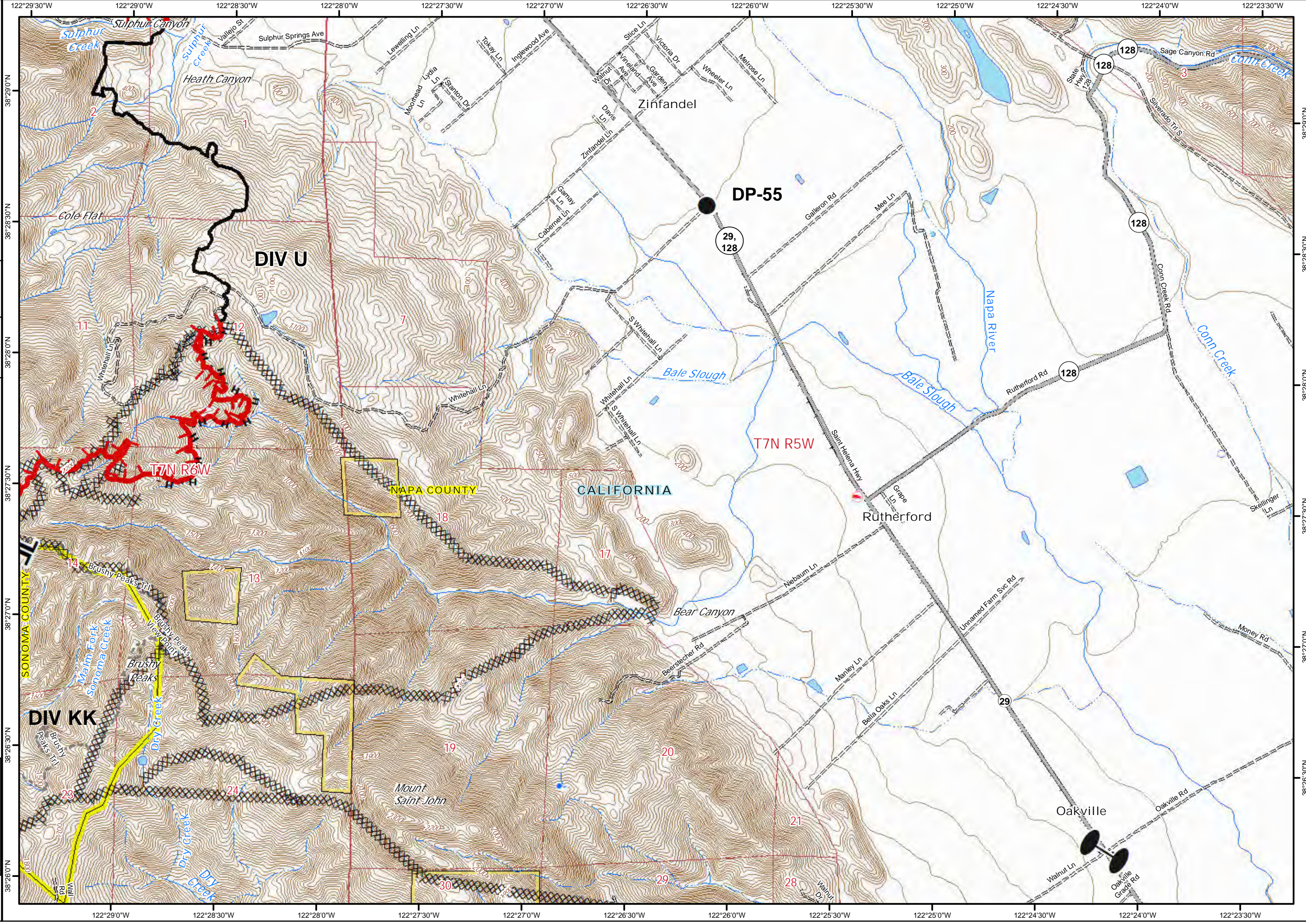
Glass Incident
CA-LNU-015947
Oct 4, 2020
0700 - 0700

IAP Map
Page 15

- Drop Point
- Zone Break
- Uncontrolled Fire Edge
- Contained Line
- Completed Dozer Line
- H - Completed Hand Line

0 0.2 0.4
Miles

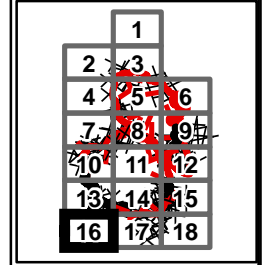
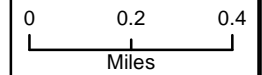
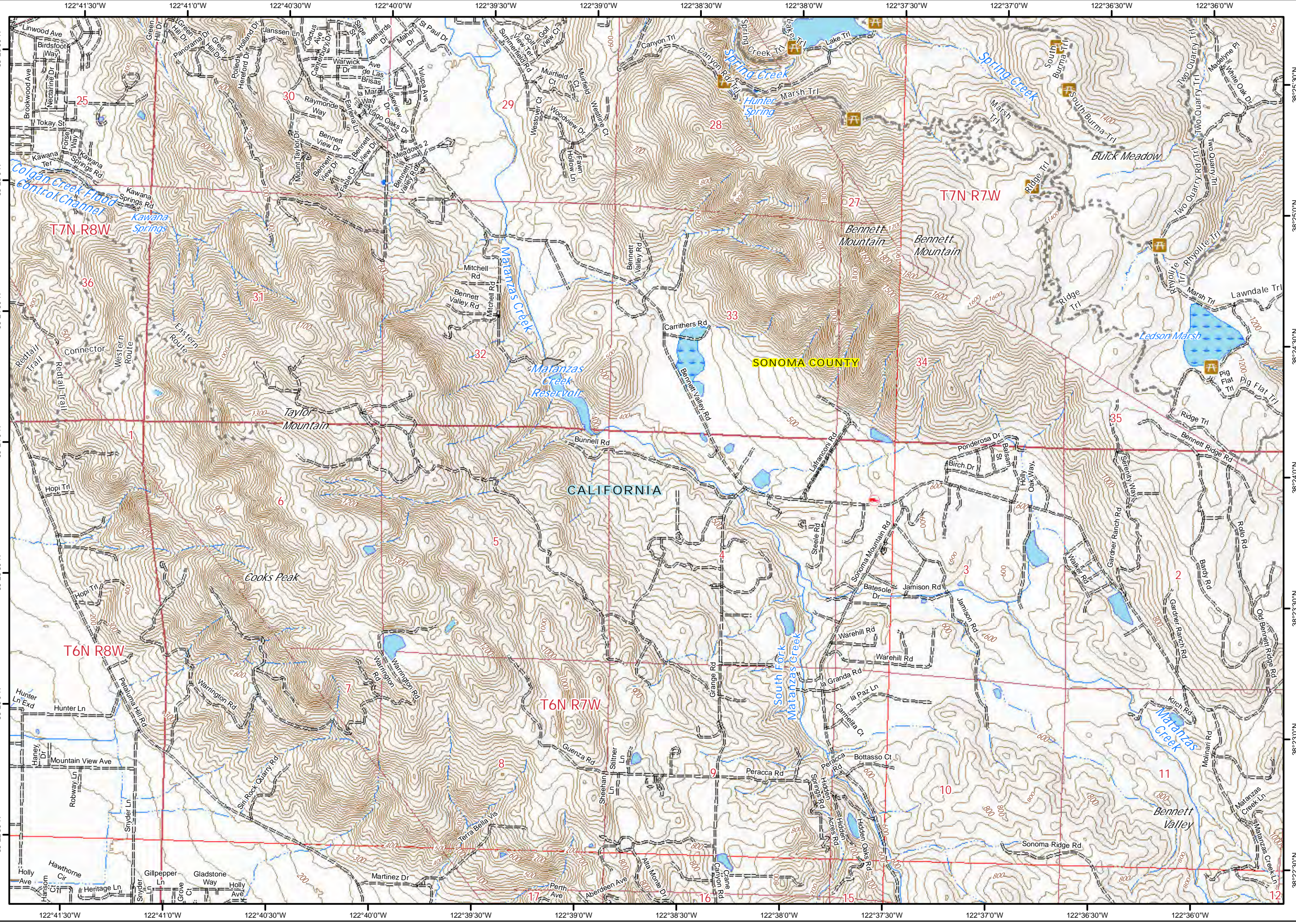
1
2 3
4 5 6
7 8 9
10 11 12
13 14 15
16 17 18





Glass Incident
CA-LNU-015947
Oct 4, 2020
0700 - 0700

IAP Map
Page 16



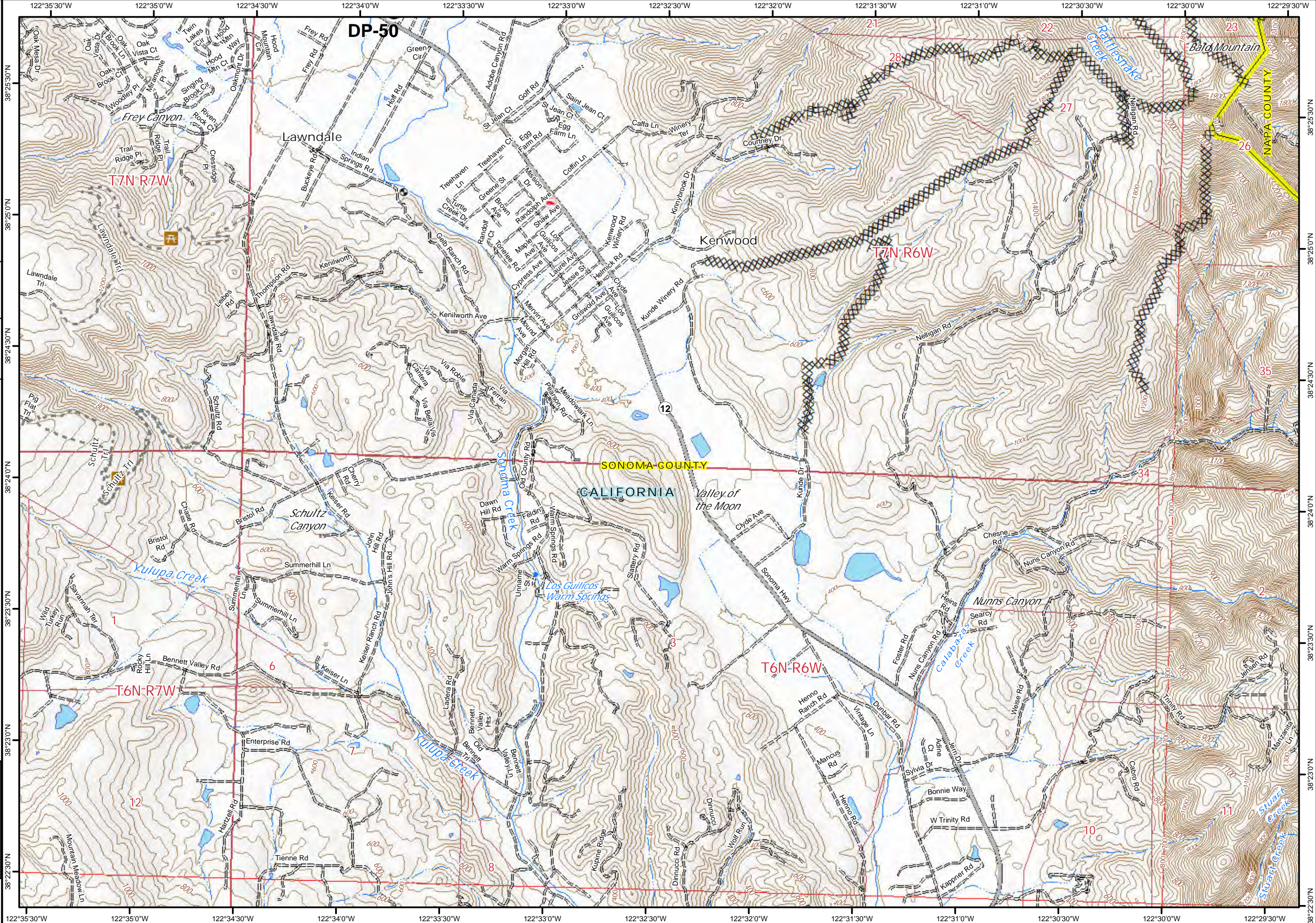


Glass Incident
CA-LNU-015947
Oct 4, 2020
0700 - 0700

IAP Map
Page 17

● Drop Point
XXXX Completed Dozer Line
0 0.2 0.4
Miles

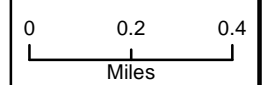
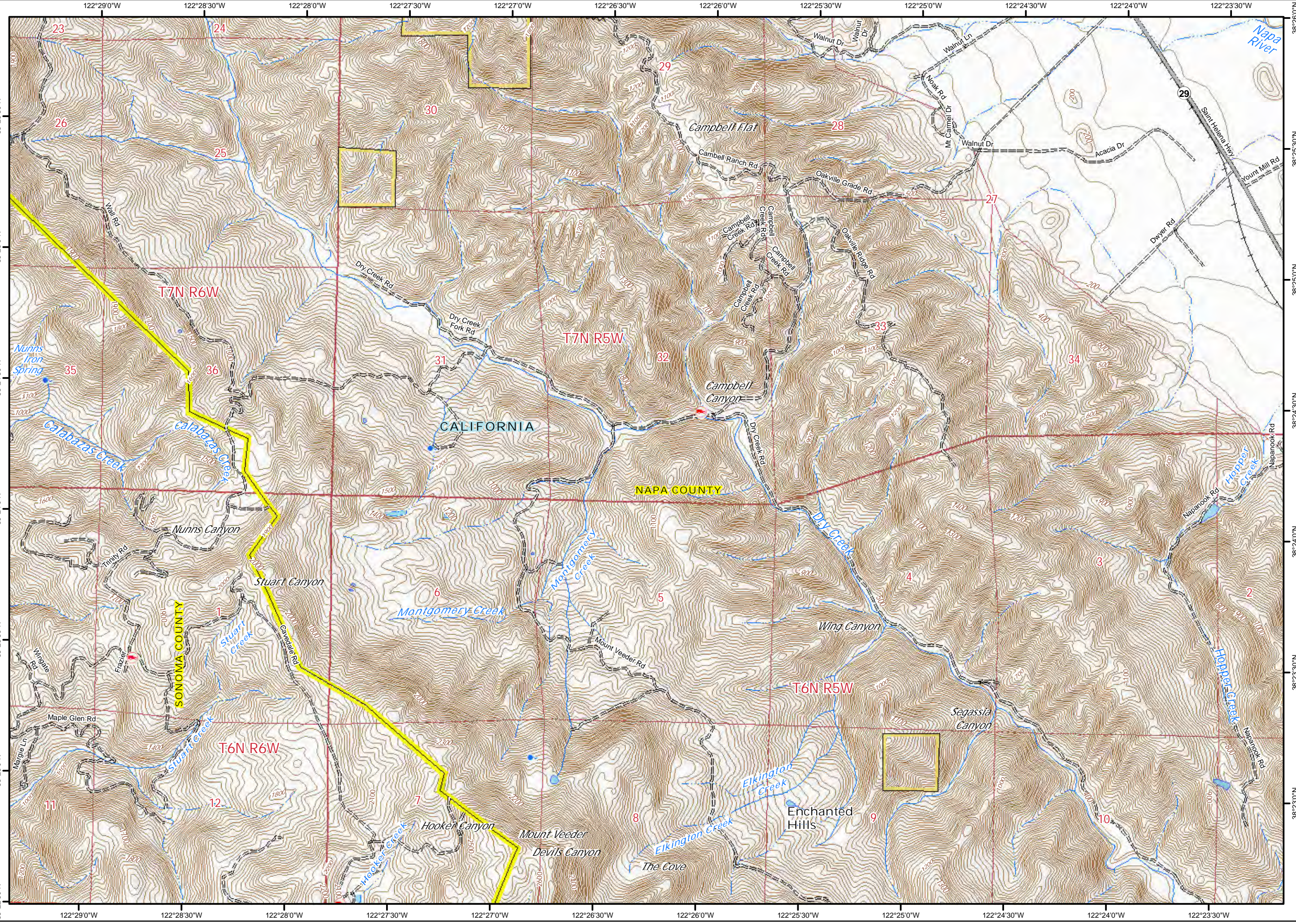
1
2 3
4 5 6
7 8 9
10 11 12
13 14 15
16 17 18





Glass Incident
CA-LNU-015947
Oct 4, 2020
0700 - 0700

IAP Map
Page 18



1
2 3
4 5 6
7 8 9
10 11 12
13 14 15
16 17 18

