



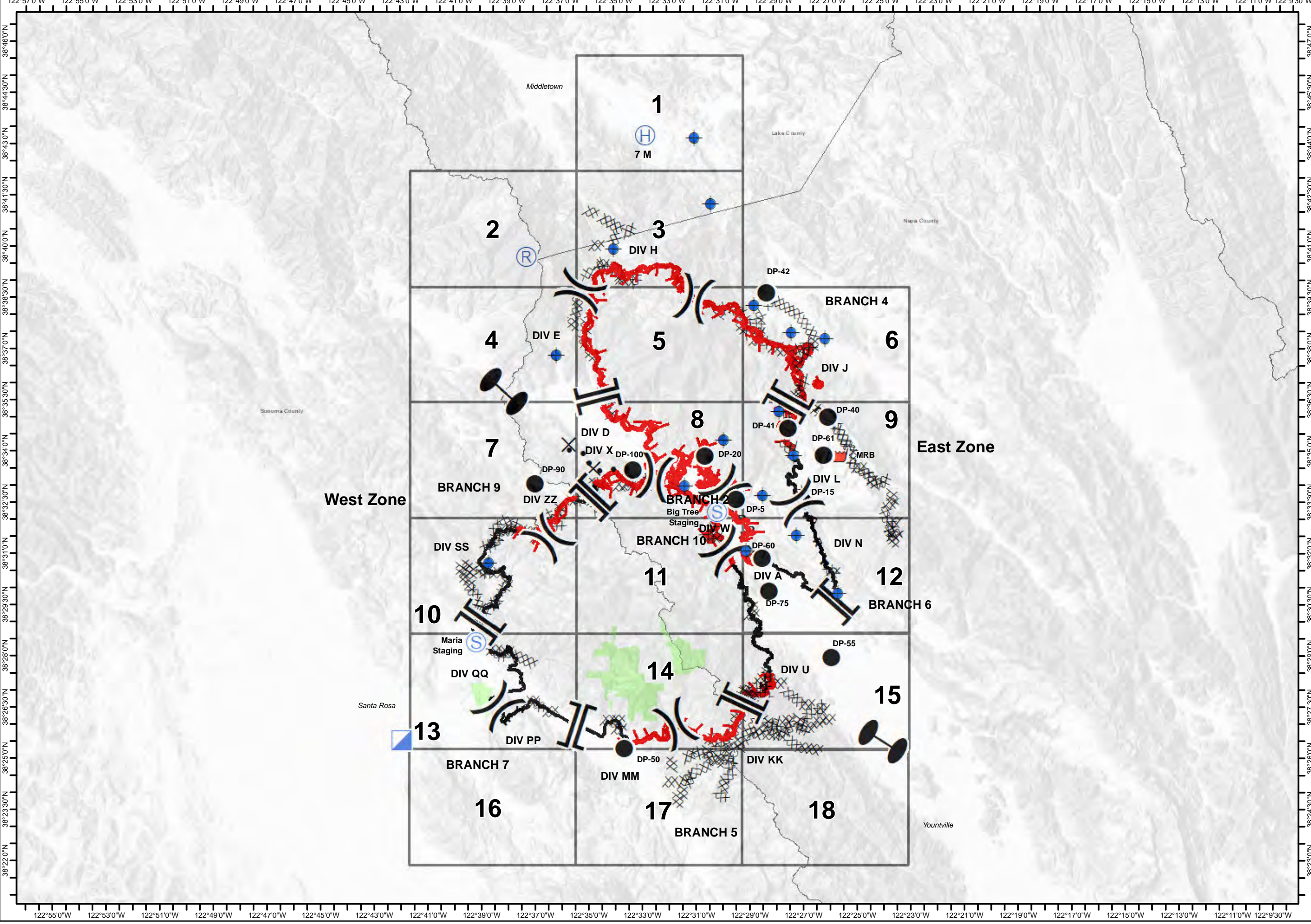
Glass Incident
CA-LNU-015947
Oct 5, 2020
 0700 - 0700

IAP Map
 Page 0

- Dip Site
- Drop Point
- Helibase
- Incident Command Post
- Repeater
- Retardant/Mud Pit
- Staging Area
- Zone Break
- Division Break
- Branch Break
- Uncontrolled Fire Edge
- Contained Line
- Completed Dozer Line
- Completed Hand Line
- Road as Completed Line
- Proposed Dozer Line
- County Boundary
- Sonoma County Parks

0 1.5 3
Miles

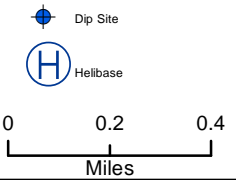
1		
2	3	
4	5	6
7	8	9
10	11	12
13	14	15
16	17	18



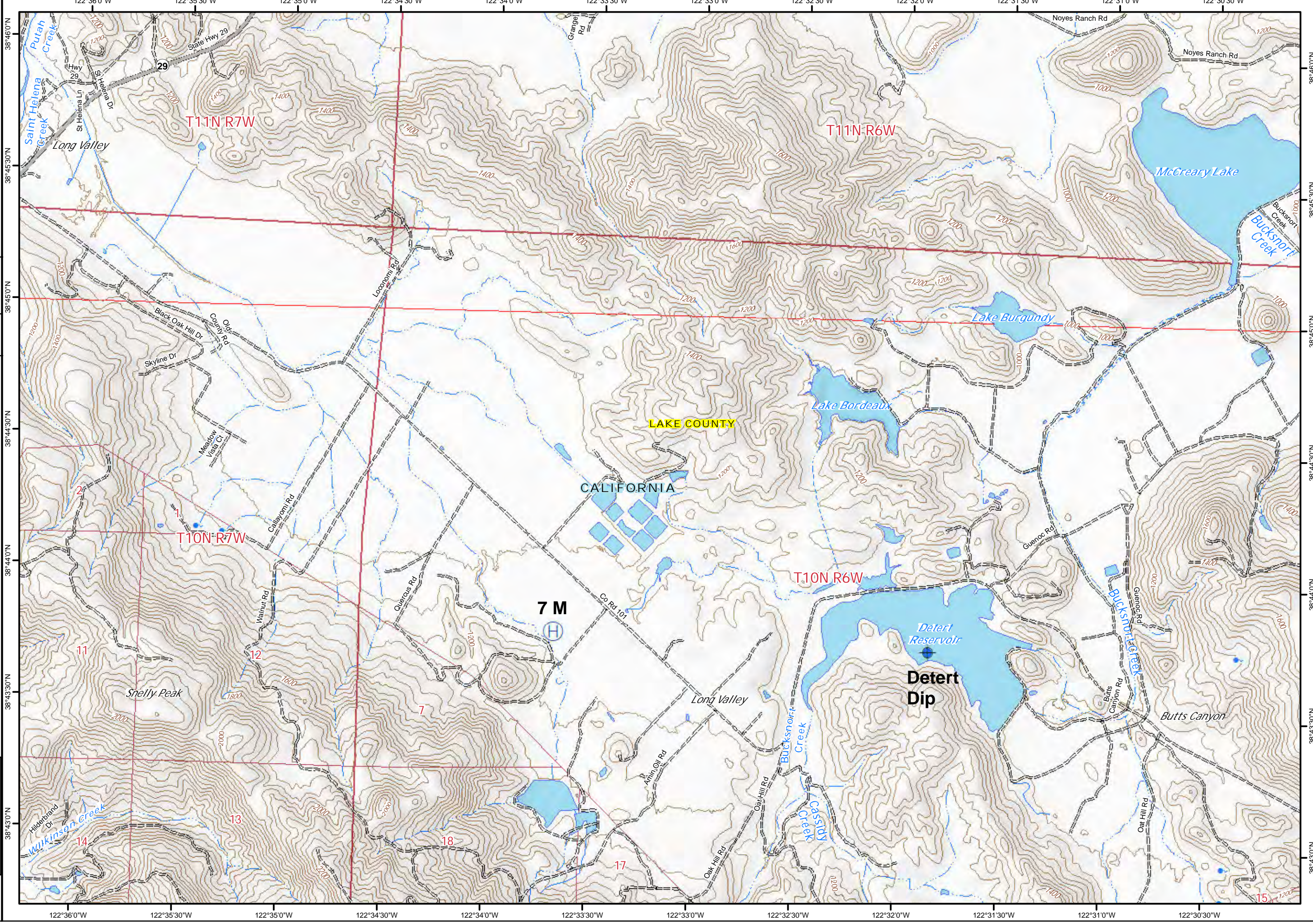


Glass Incident
CA-LNU-015947
Oct 5, 2020
0700 - 0700

IAP Map
Page 1



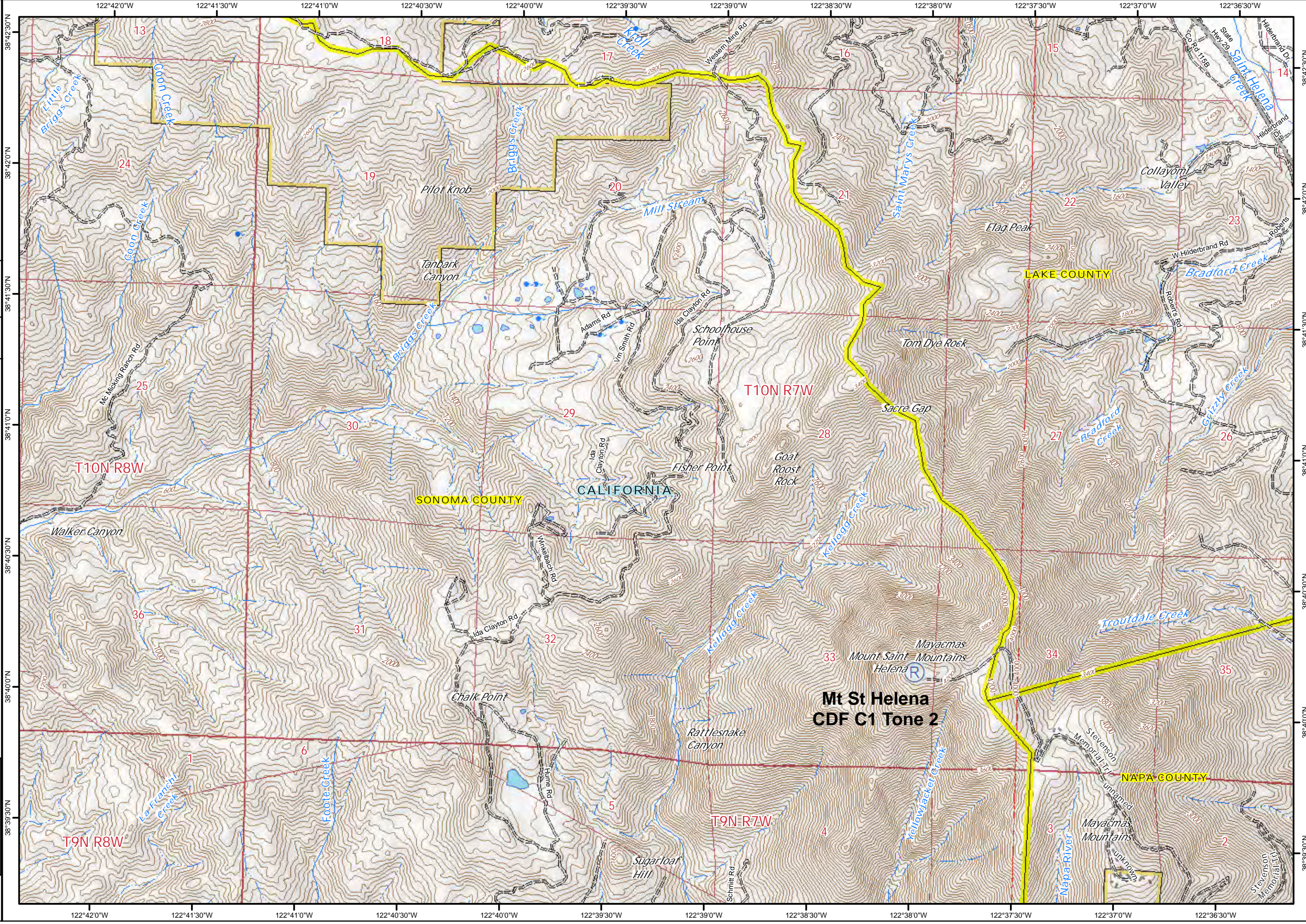
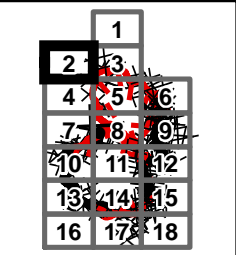
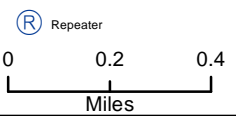
1
2 3
4 5 6
7 8 9
10 11 12
13 14 15
16 17 18





Glass Incident
CA-LNU-015947
Oct 5, 2020
0700 - 0700

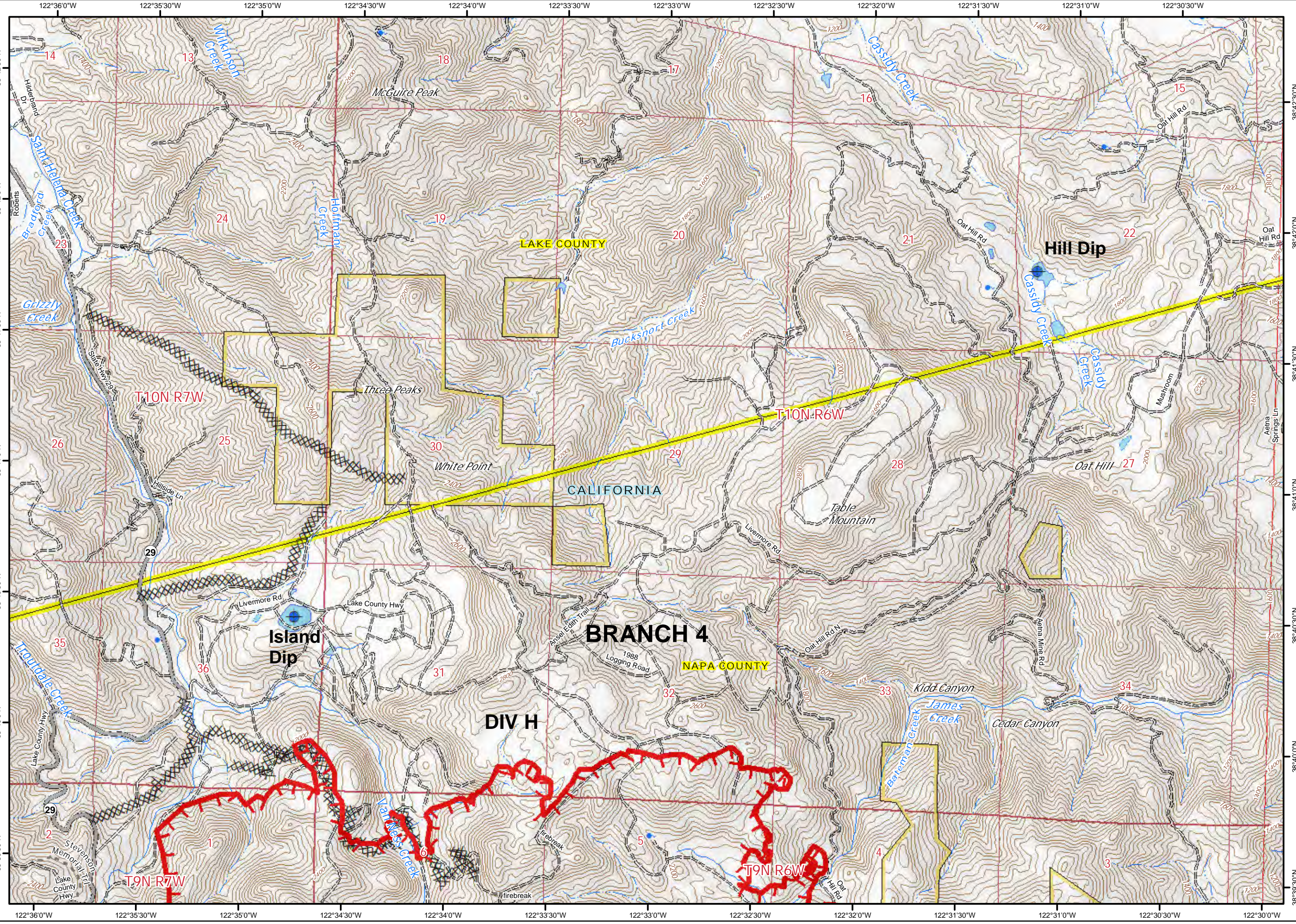
IAP Map
Page 2





Glass Incident
CA-LNU-015947
Oct 5, 2020
0700 - 0700

IAP Map
Page 3



- Dip Site
- Uncontrolled Fire Edge
- Completed Dozer Line

0 0.2 0.4
Miles

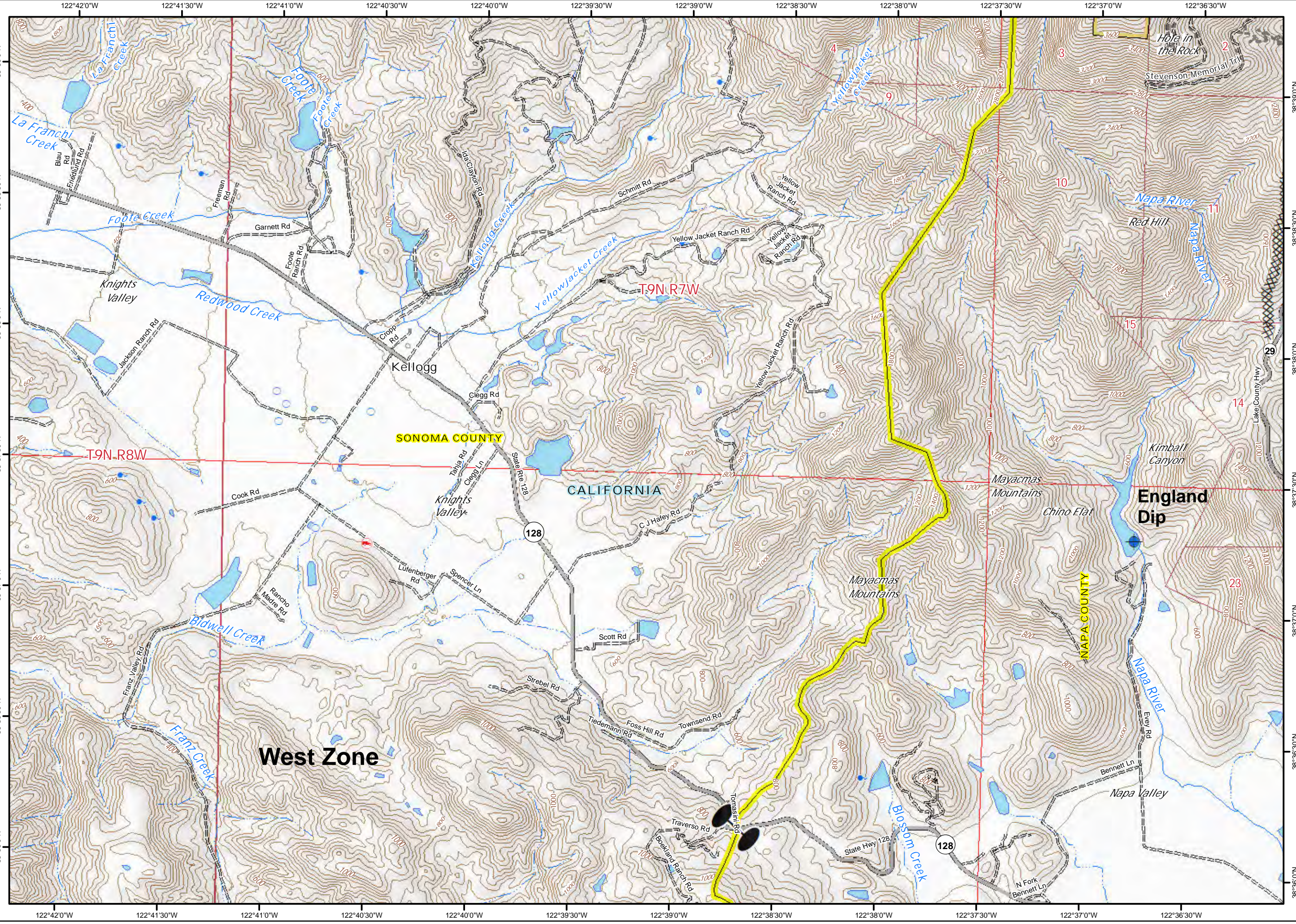
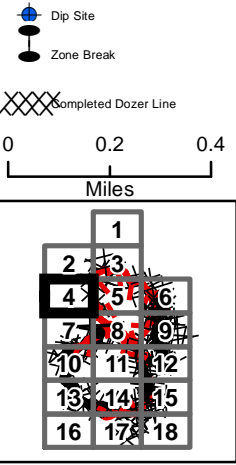
1
2 3
4 5 6
7 8 9
10 11 12
13 14 15
16 17 18





Glass Incident
CA-LNU-015947
Oct 5, 2020
0700 - 0700

IAP Map
Page 4



122°42'0"W 122°41'30"W 122°41'0"W 122°40'30"W 122°40'0"W 122°39'30"W 122°39'0"W 122°38'30"W 122°38'0"W 122°37'30"W 122°37'0"W 122°36'30"W

38°39'0"N 38°38'30"N 38°38'0"N 38°37'30"N 38°37'0"N 38°36'30"N 38°36'0"N

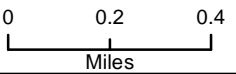
38°39'0"N 38°38'30"N 38°38'0"N 38°37'30"N 38°37'0"N 38°36'30"N 38°36'0"N



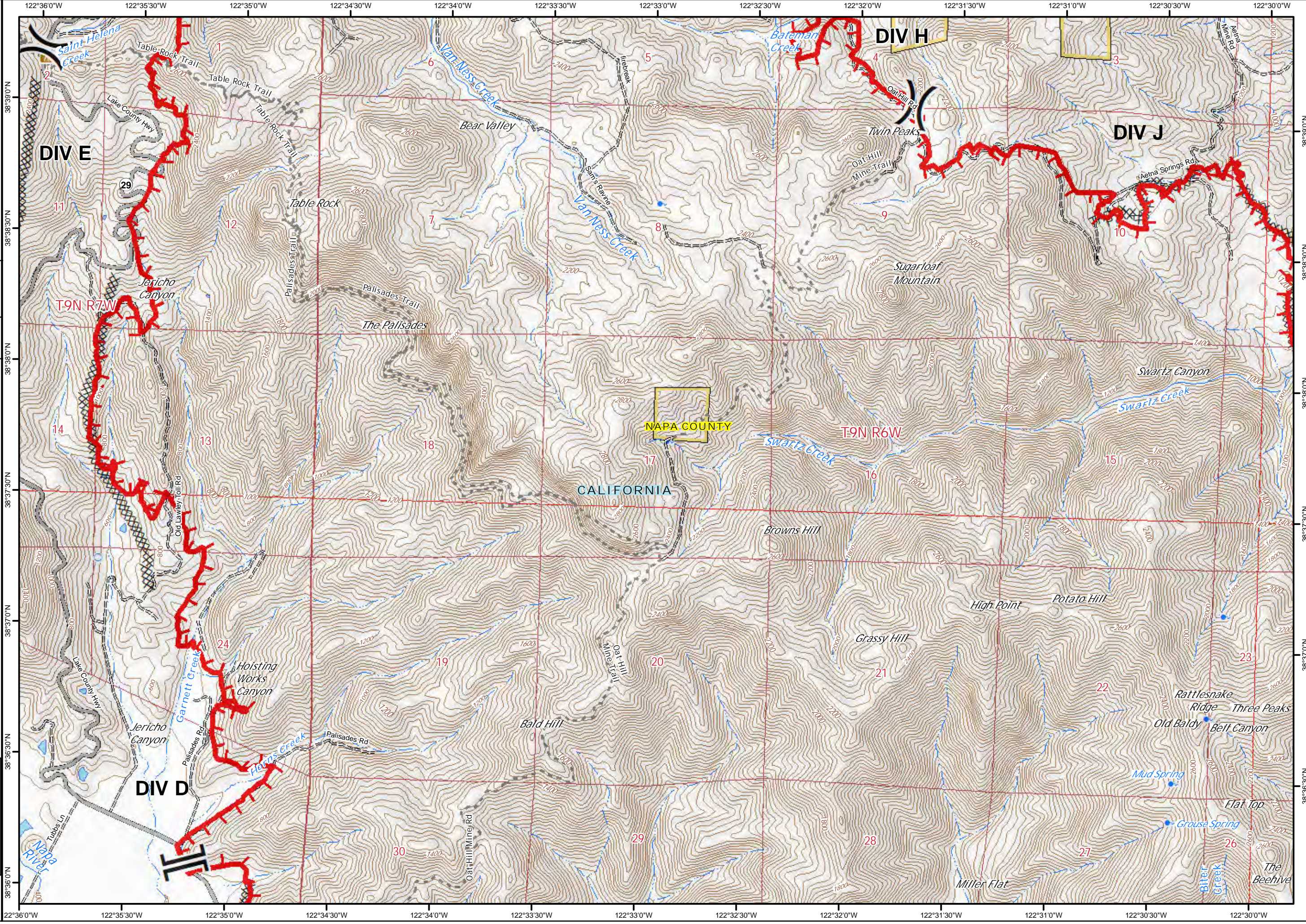
Glass Incident
CA-LNU-015947
Oct 5, 2020
0700 - 0700

IAP Map
Page 5

- () Division Break
- || Branch Break
- Uncontrolled Fire Edge
- XXXX Completed Dozer Line
- H - Completed Hand Line



1
2 3
4 5 6
7 8 9
10 11 12
13 14 15
16 17 18

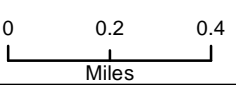




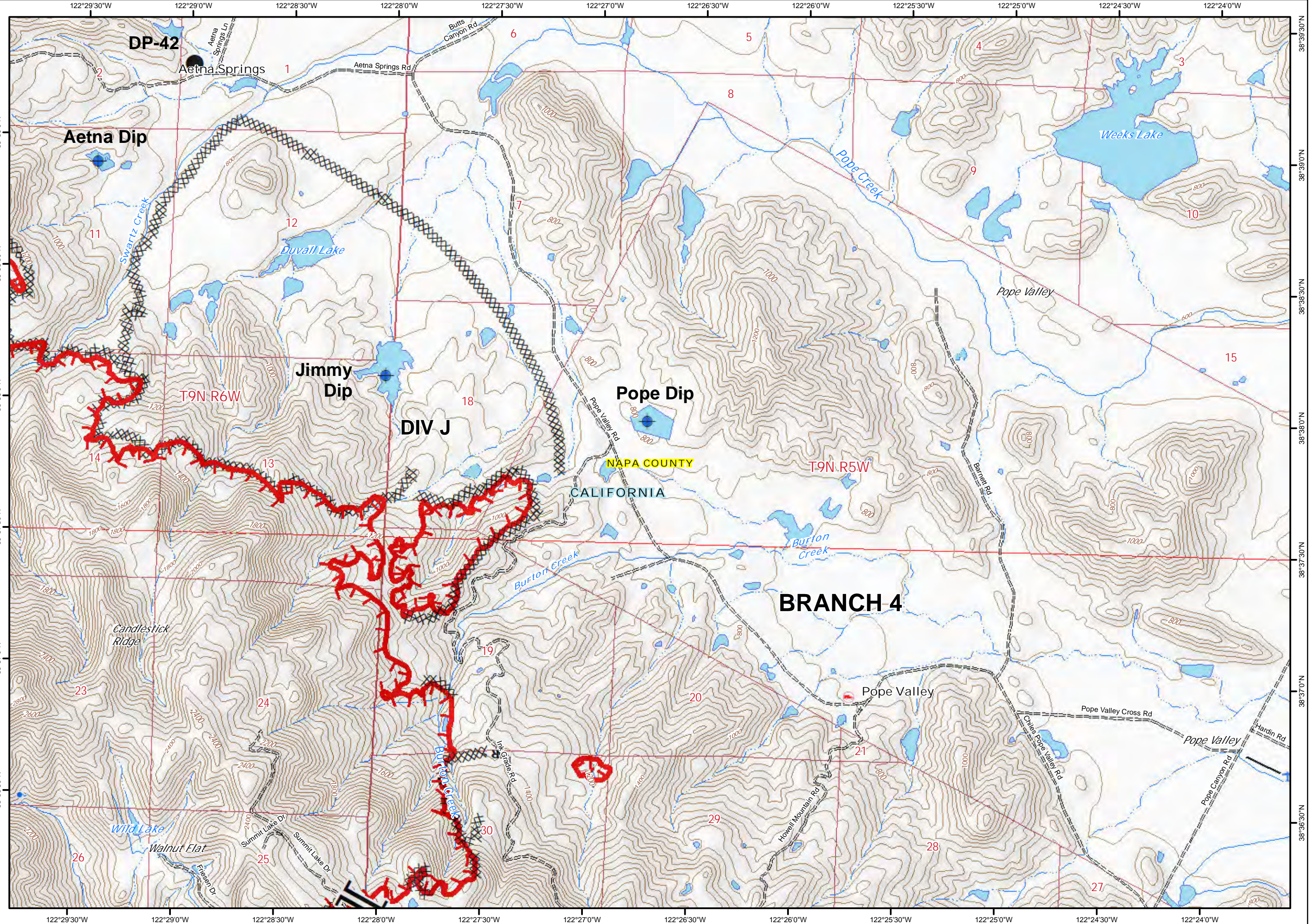
Glass Incident
 CA-LNU-015947
 Oct 5, 2020
 0700 - 0700

IAP Map
 Page 6

- Dip Site
- Drop Point
- Branch Break
- Uncontrolled Fire Edge
- Completed Dozer Line
- Completed Hand Line
- Road as Completed Line



1
2 3
4 5 6
7 8 9
10 11 12
13 14 15
16 17 18



DP-42

Aetna Dip

Jimmy Dip

Pope Dip

BRANCH 4

NAPA COUNTY
 CALIFORNIA

Weeks Lake

Wild Lake

Walnut Flat

Pope Valley

Pope Valley Cross Rd

Pope Valley

Pope Valley Rd

Hardin Rd

Pope Canyon Rd

Howell Mountain Rd

Ink Spade Rd

Summit Lake Dr

Summit Lake Dr

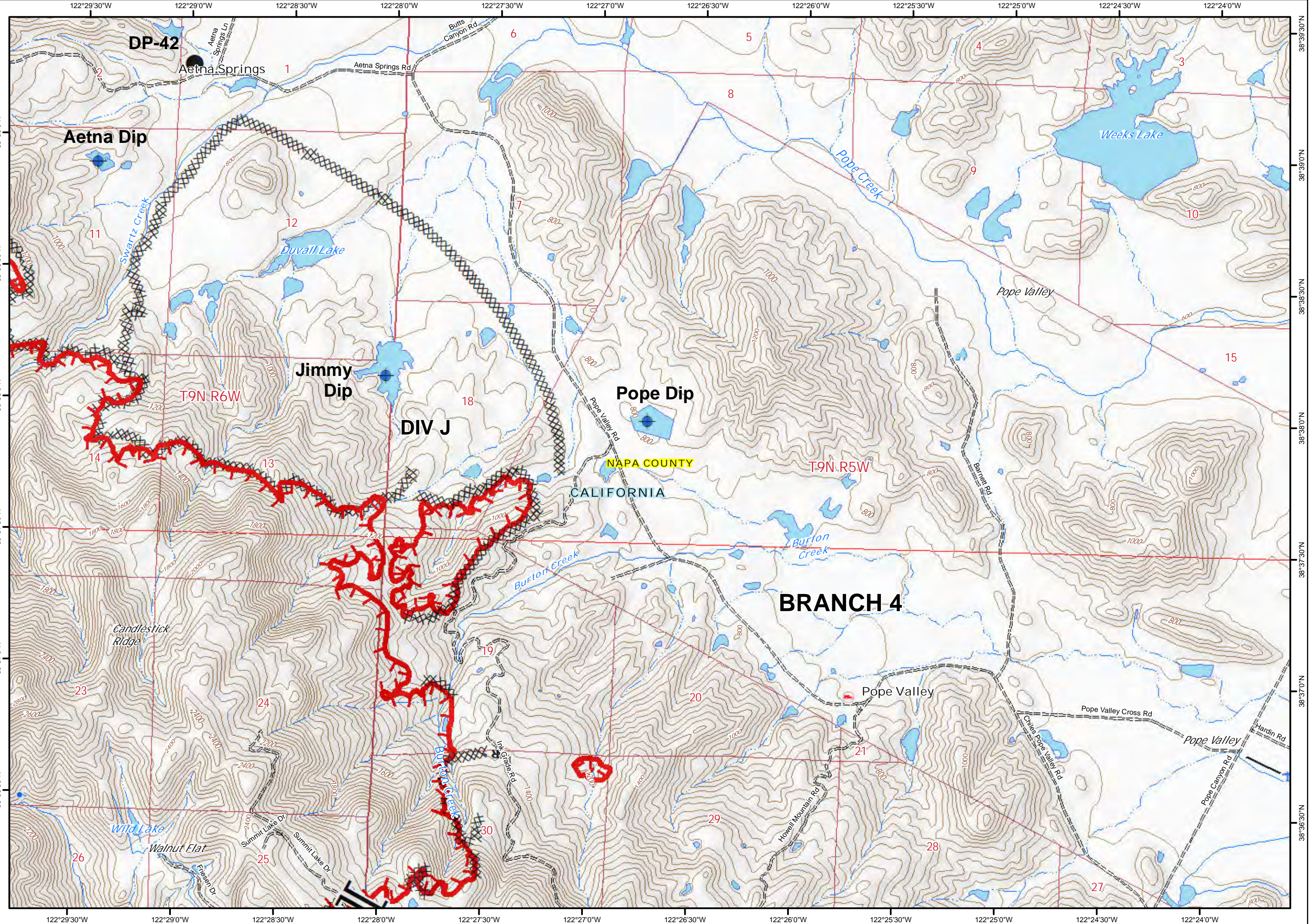
Eliason Dr

Pope Valley

T9N R6W

T9N R5W

DIV J

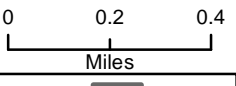




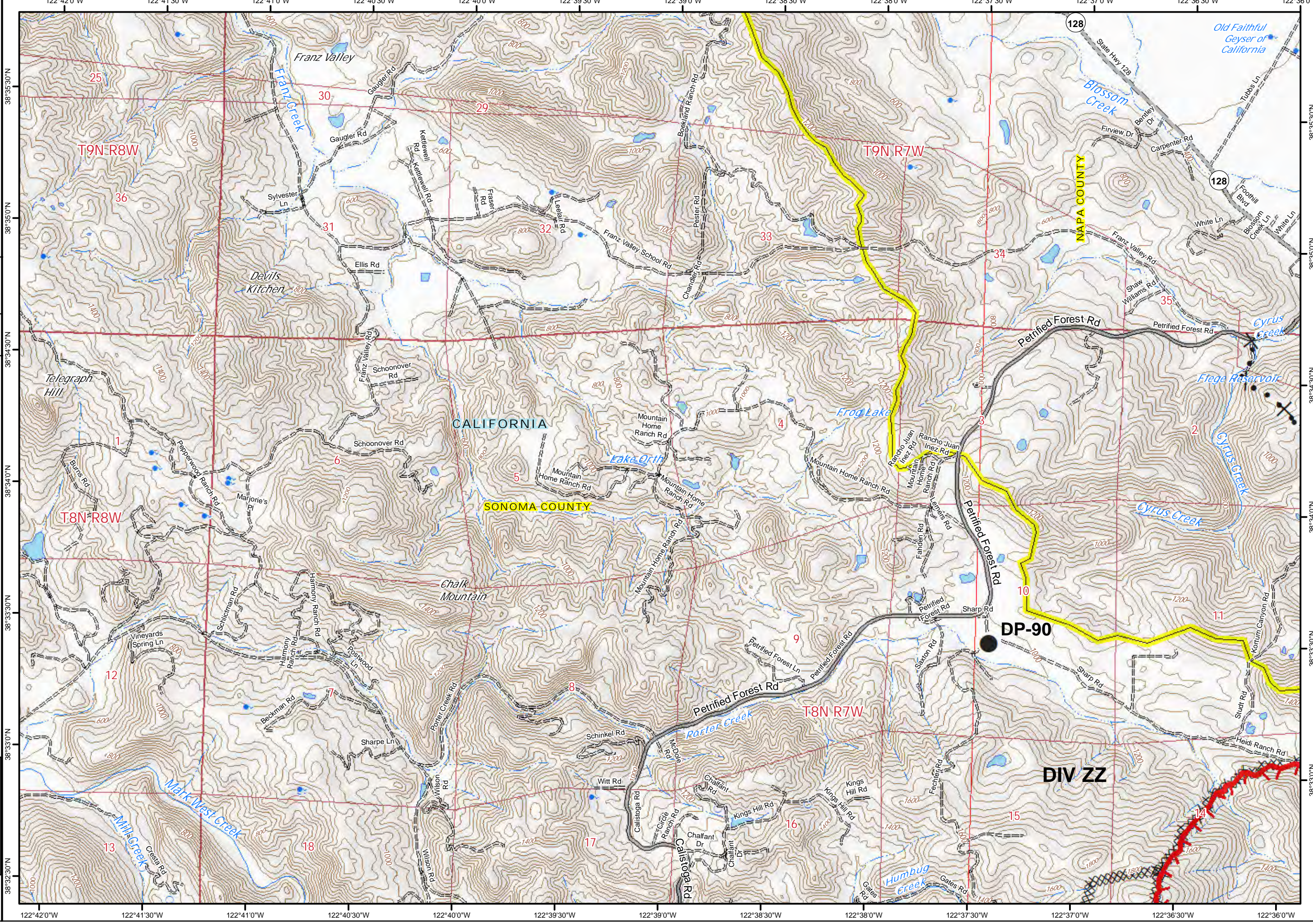
Glass Incident
CA-LNU-015947
Oct 5, 2020
0700 - 0700

IAP Map
Page 7

- Drop Point
- Uncontrolled Fire Edge
- Contained Line
- XXXX Completed Dozer Line
- ✕ Proposed Dozer Line



1
2 3
4 5 6
7 8 9
10 11 12
13 14 15
16 17 18

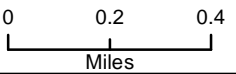




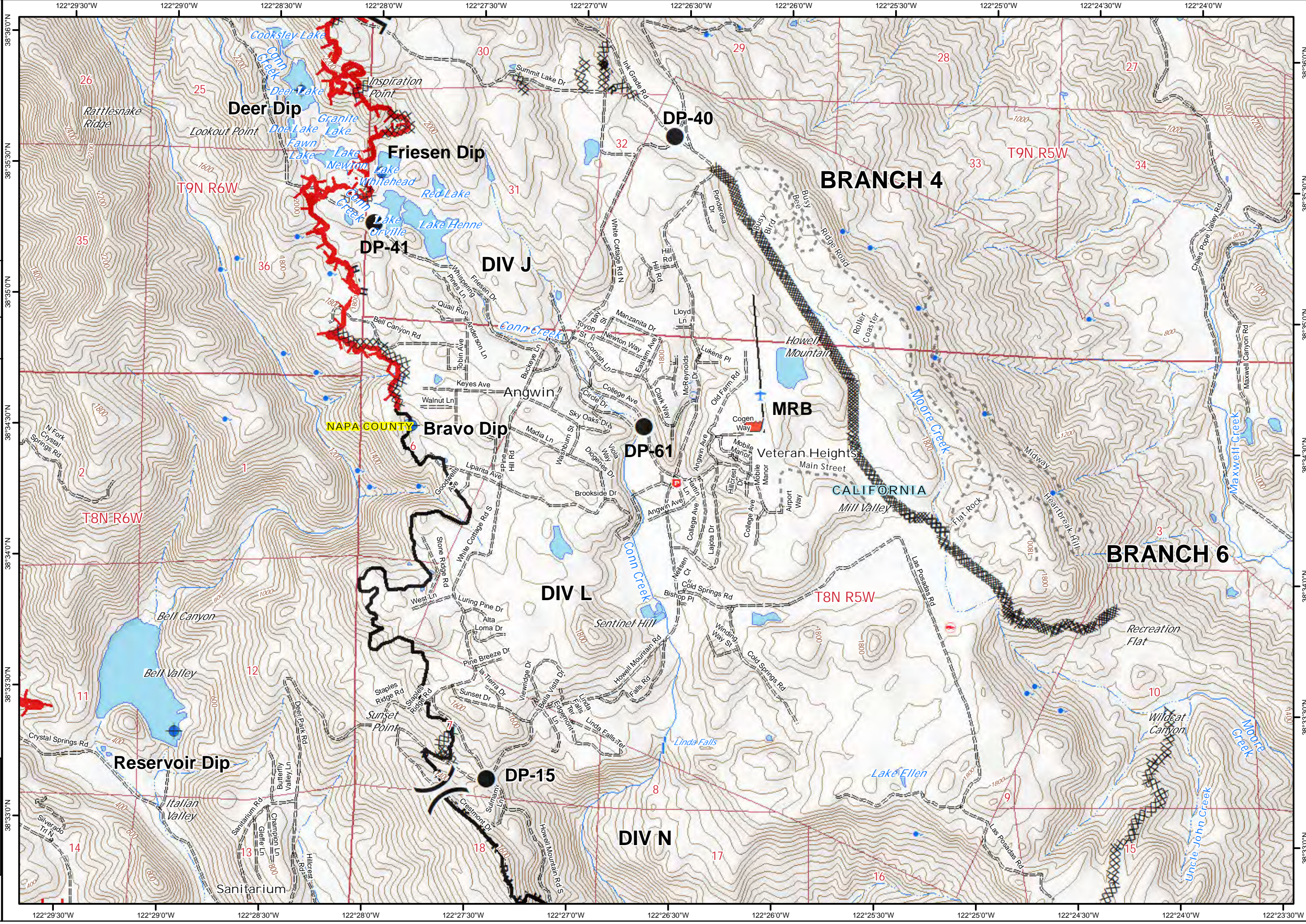
Glass Incident
CA-LNU-015947
Oct 5, 2020
0700 - 0700

IAP Map
Page 9

- Dip Site
- Drop Point
- Retardant/Mud Pit
- Division Break
- Branch Break
- Uncontrolled Fire Edge
- Contained Line
- Completed Dozer Line
- H - Completed Hand Line
- R - Road as Completed Line



1
2 3
4 5 6
7 8 9
10 11 12
13 14 15
16 17 18

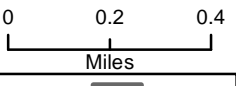




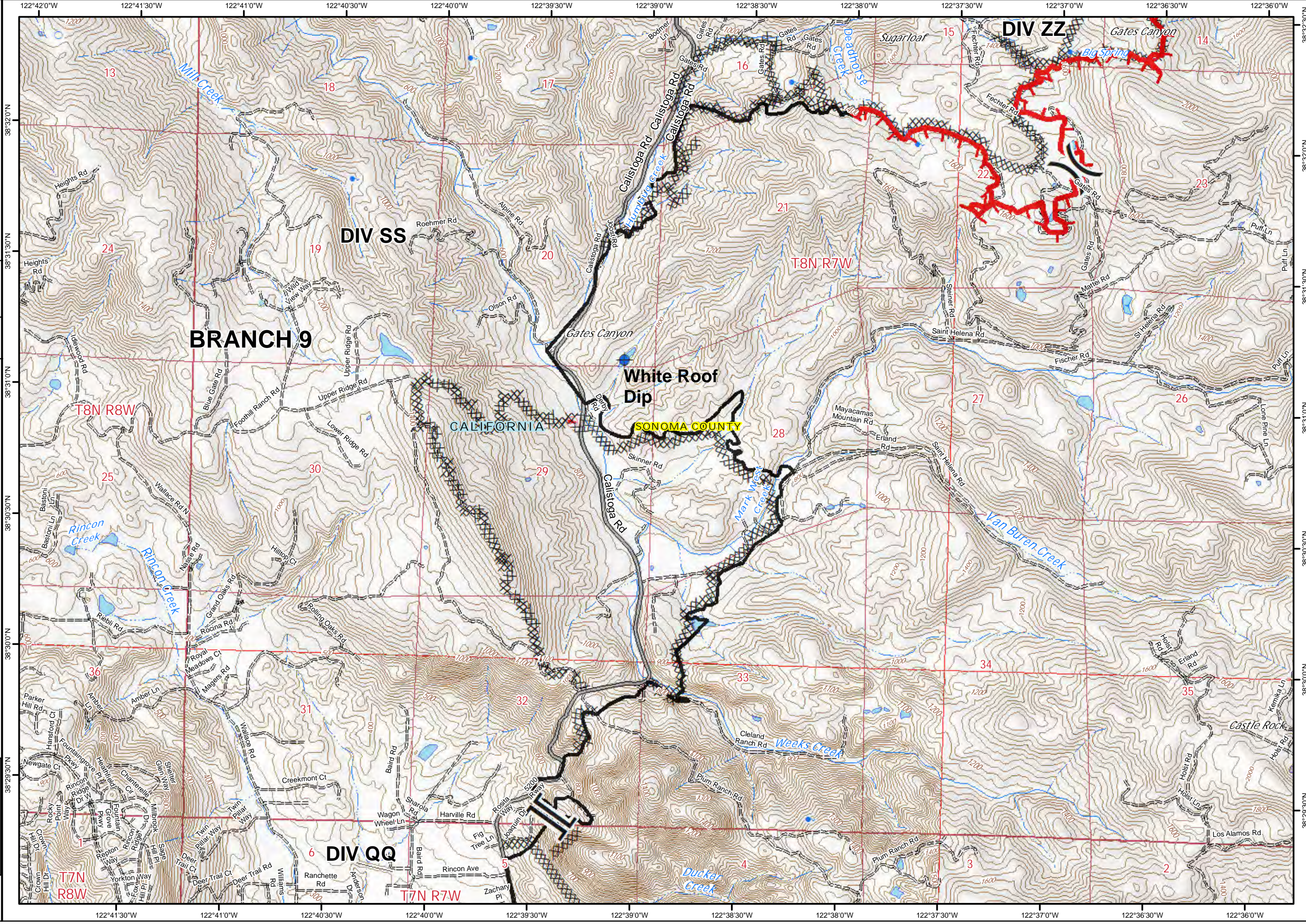
Glass Incident
CA-LNU-015947
Oct 5, 2020
0700 - 0700

IAP Map
Page 10

- Dip Site
- Division Break
- Branch Break
- Uncontrolled Fire Edge
- Contained Line
- Completed Dozer Line



1
2 3
4 5 6
7 8 9
10 11 12
13 14 15
16 17 18



BRANCH 9

DIV SS

DIV ZZ

White Roof Dip

CALIFORNIA SONOMA COUNTY

DIV QQ

T7N R8W

T8N R8W

T8N R7W

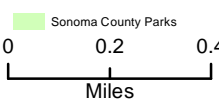
T7N R7W



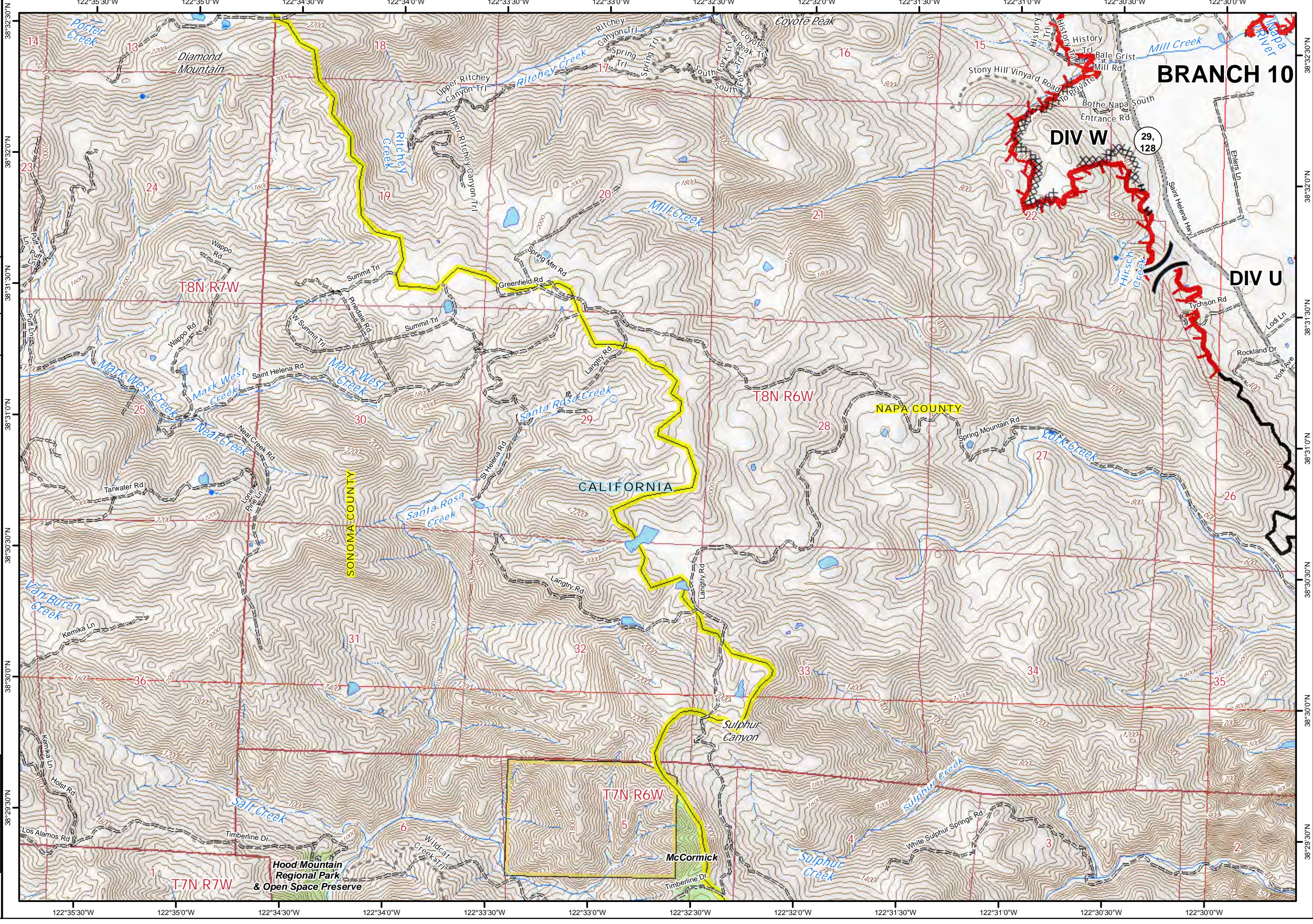
Glass Incident
CA-LNU-015947
Oct 5, 2020
0700 - 0700

IAP Map
Page 11

- () Division Break
- Uncontrolled Fire Edge
- Contained Line
- XXXX Completed Dozer Line
- H - Completed Hand Line
- R - Road as Completed Line



1	2	3
4	5	6
7	8	9
10	11	12
13	14	15
16	17	18



BRANCH 10

DIV W

DIV U

NAPA COUNTY

CALIFORNIA

SONOMA COUNTY

T8N R7W

T8N R6W

T7N R6W

T7N R7W

Hood Mountain Regional Park & Open Space Preserve

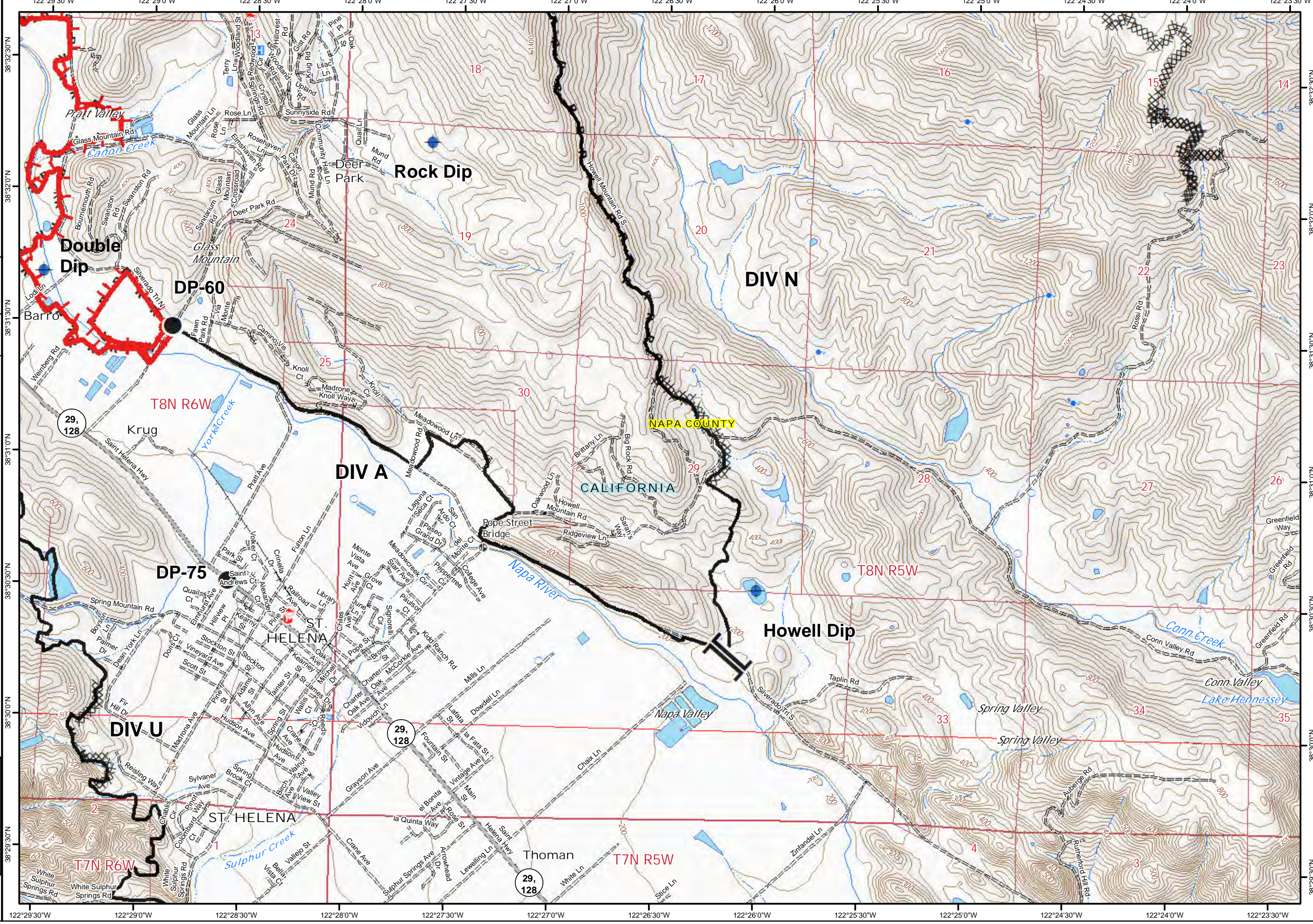
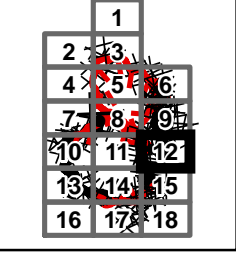
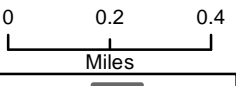
McCormick



Glass Incident
CA-LNU-015947
Oct 5, 2020
0700 - 0700

IAP Map
Page 12

- Dip Site
- Drop Point
- Branch Break
- Uncontrolled Fire Edge
- Contained Line
- Completed Dozer Line
- Completed Hand Line
- Road as Completed Line





Glass Incident
CA-LNU-015947
Oct 5, 2020
0700 - 0700

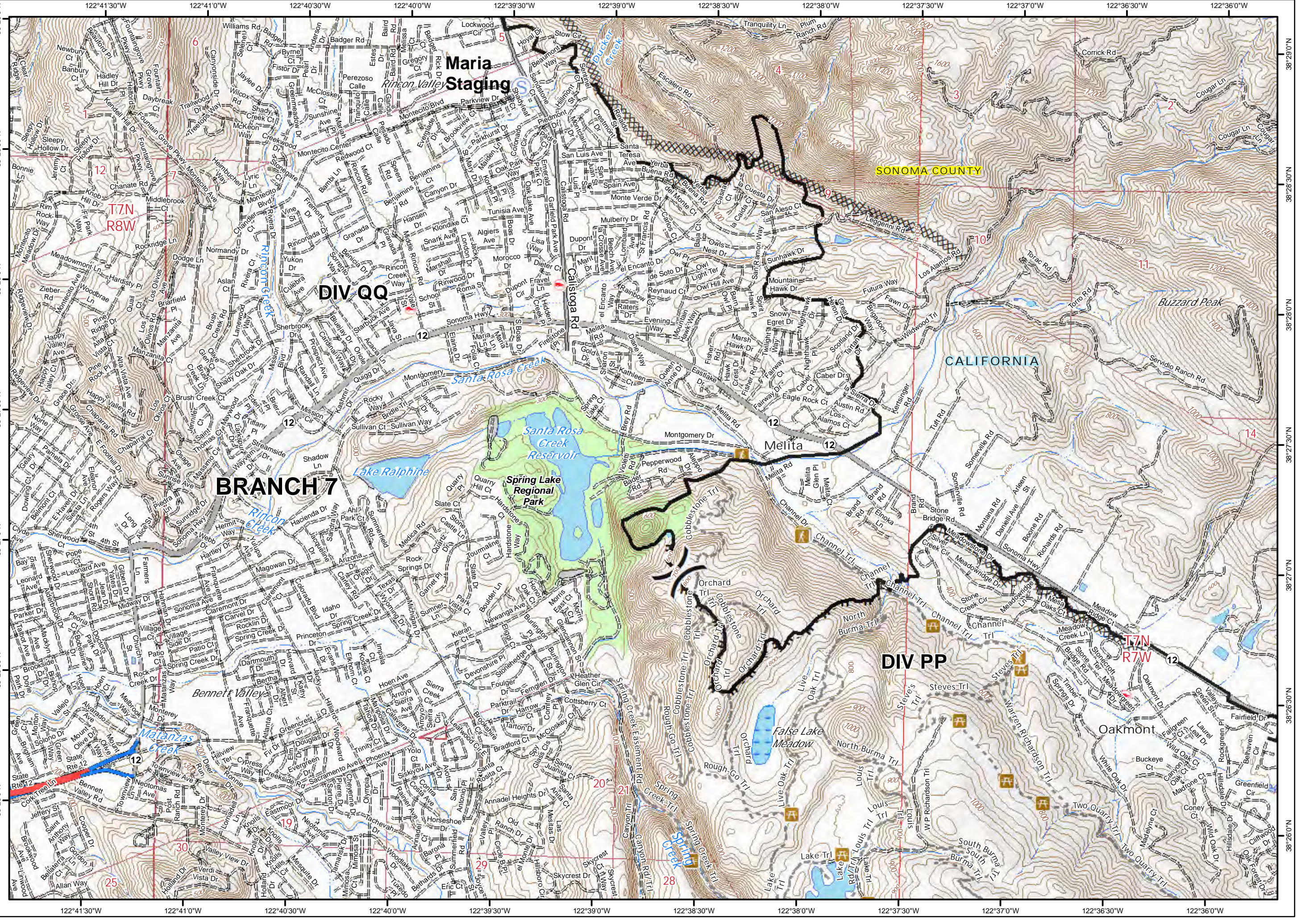
IAP Map
Page 13

S Staging Area
() Division Break
--- Contained Line
XXXX Completed Dozer Line
H Completed Hand Line

0 0.2 0.4
Miles

1	2	3
4	5	6
7	8	9
10	11	12
13	14	15
16	17	18

Paul

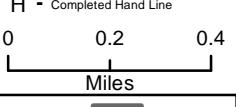




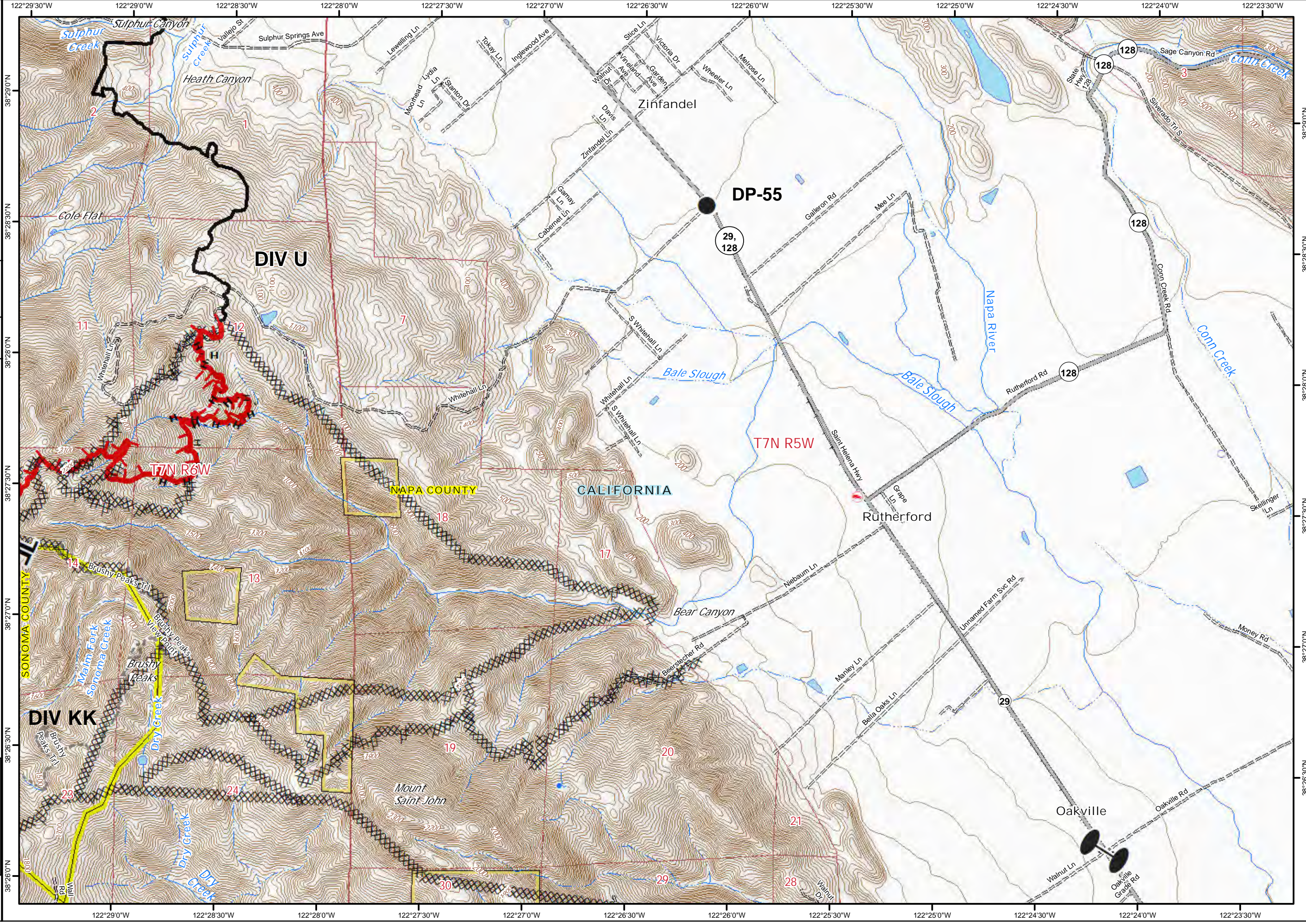
Glass Incident
CA-LNU-015947
Oct 5, 2020
0700 - 0700

IAP Map
Page 15

- Drop Point
- Zone Break
- ▬ Uncontrolled Fire Edge
- ▬ Contained Line
- XXXX Completed Dozer Line
- H - Completed Hand Line



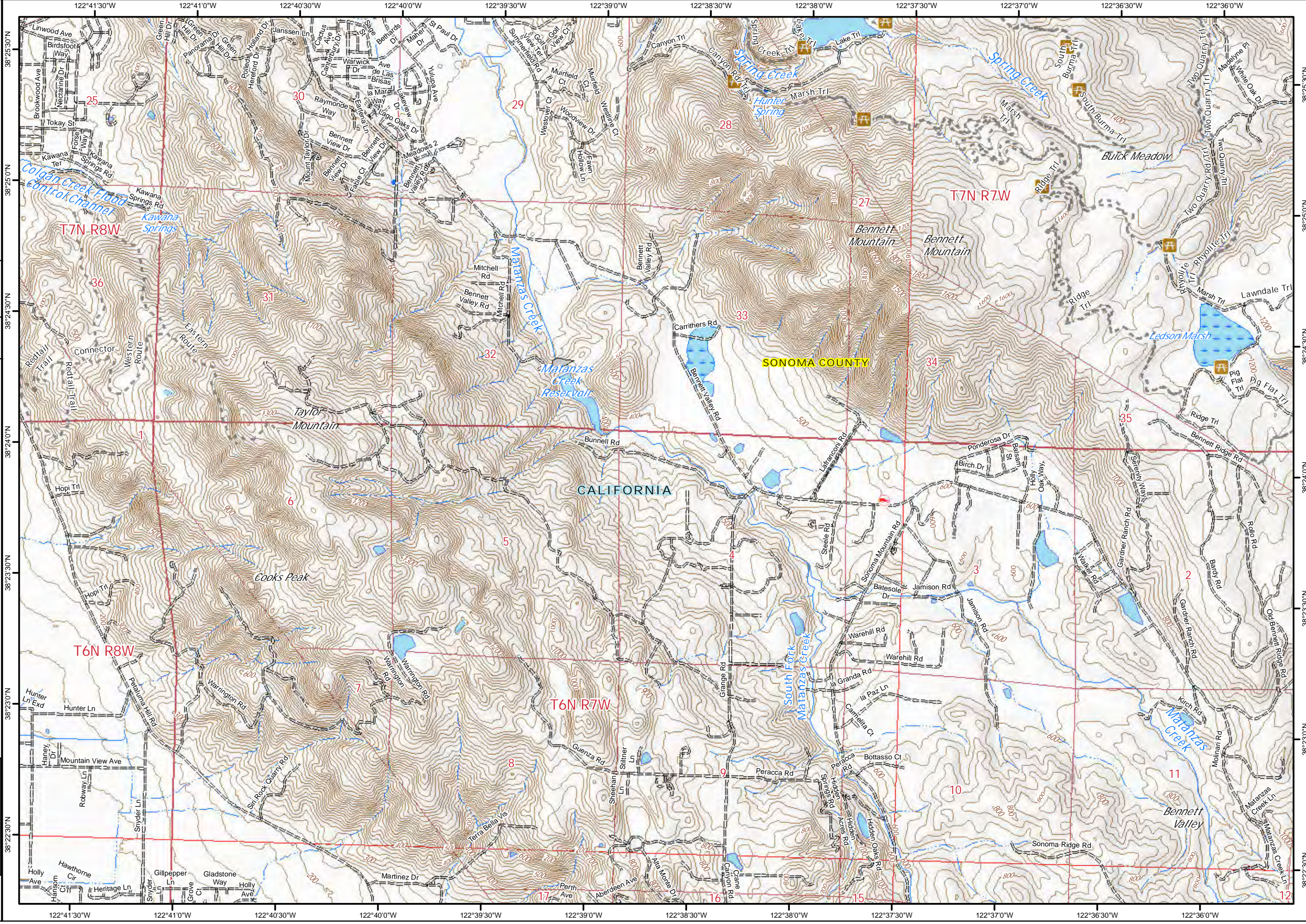
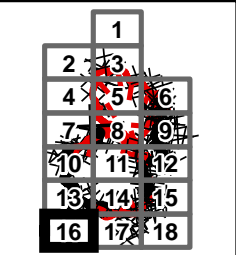
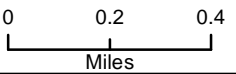
1
2 3
4 5 6
7 8 9
10 11 12
13 14 15
16 17 18





Glass Incident
CA-LNU-015947
Oct 5, 2020
0700 - 0700

IAP Map
Page 16





Glass Incident
CA-LNU-015947
Oct 5, 2020
0700 - 0700

IAP Map
Page 17

