



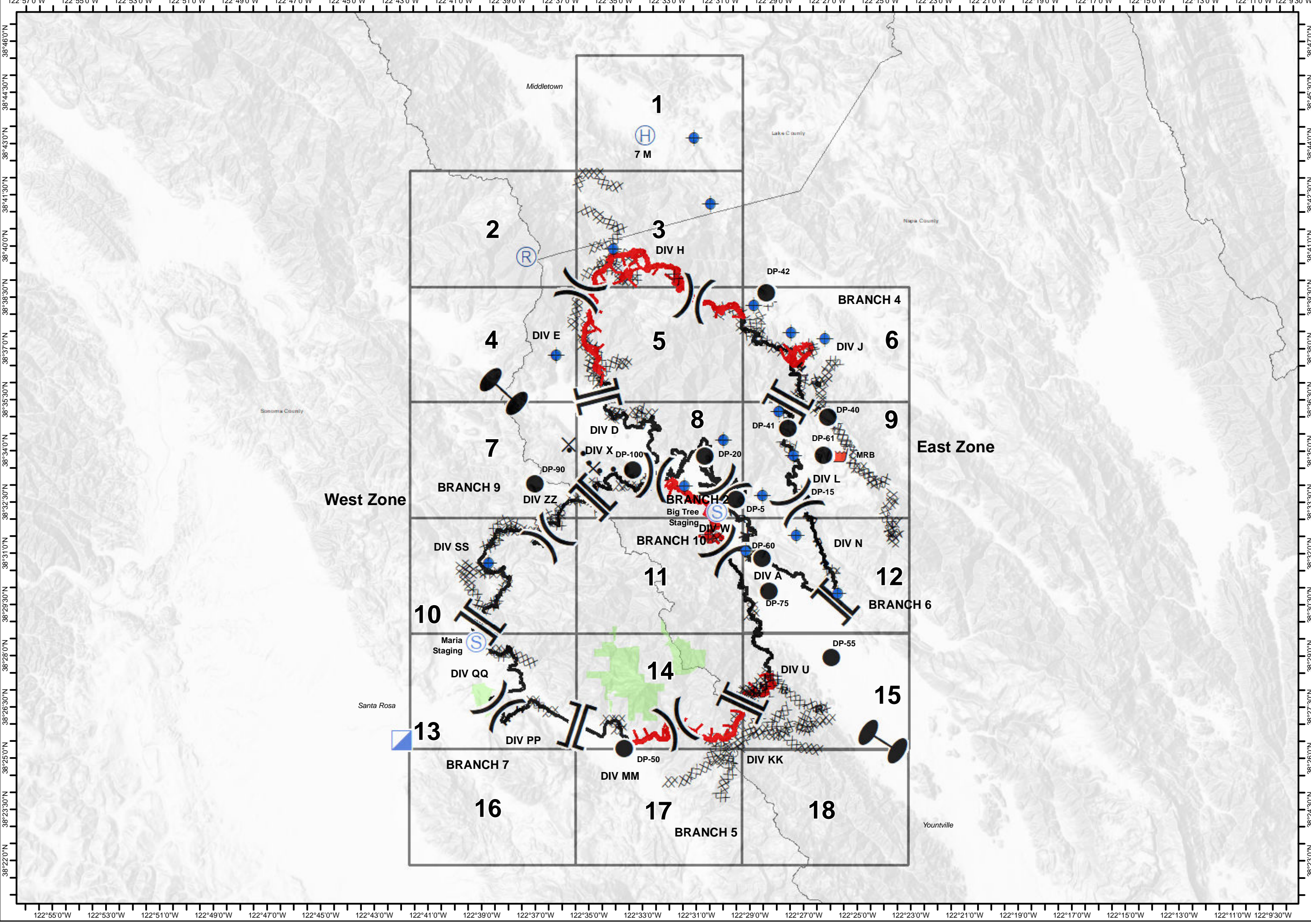
Glass Incident
CA-LNU-015947
Oct 6, 2020
 0700 - 0700

IAP Map
 Page 0

- Dip Site
- Drop Point
- Helibase
- Incident Command Post
- Repeater
- Retardant/Mud Pit
- Staging Area
- Zone Break
- Division Break
- Branch Break
- Uncontrolled Fire Edge
- Contained Line
- Completed Dozer Line
- Completed Hand Line
- Road as Completed Line
- Proposed Dozer Line
- County Boundary
- Sonoma County Parks

0 1.5 3
Miles

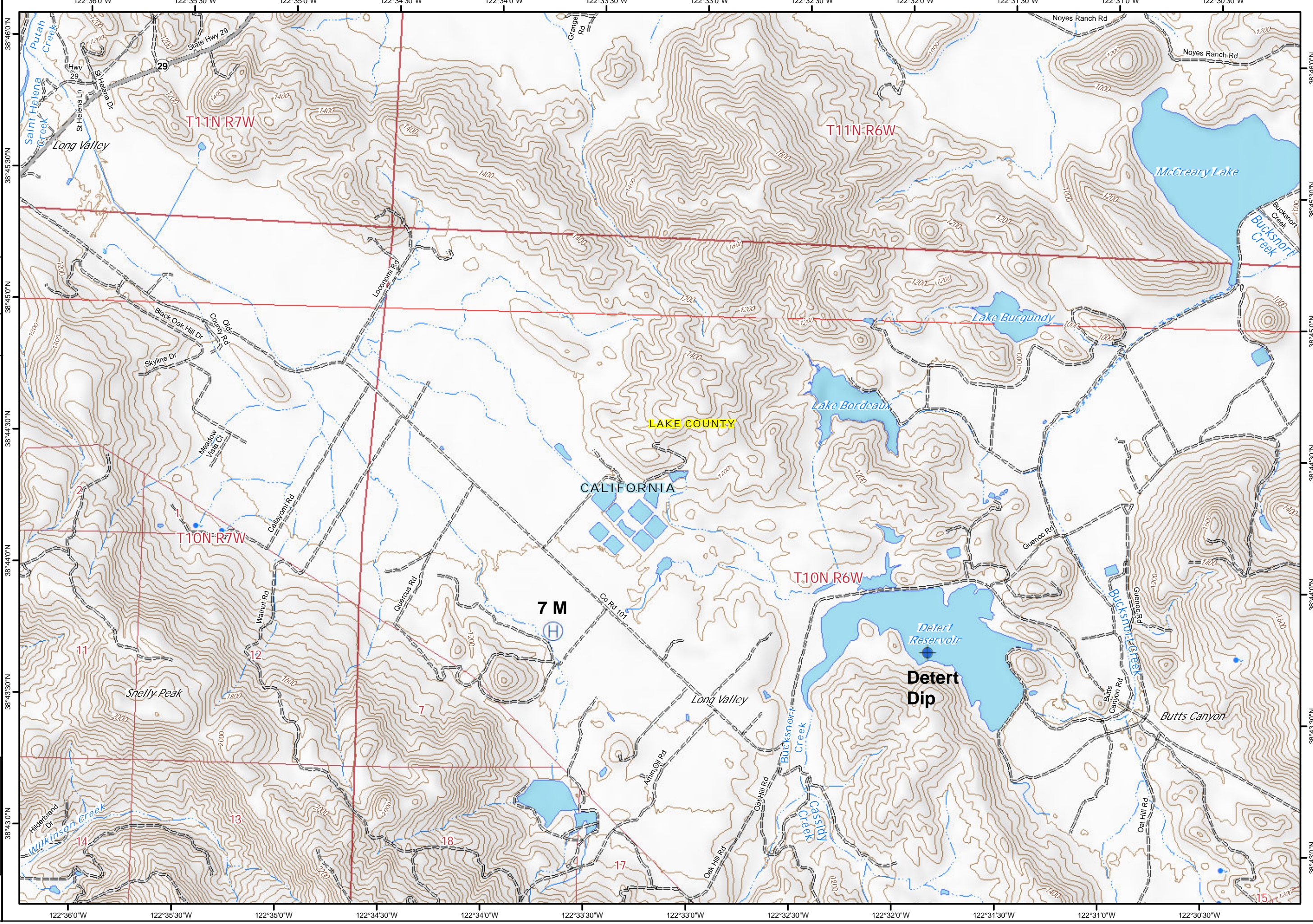
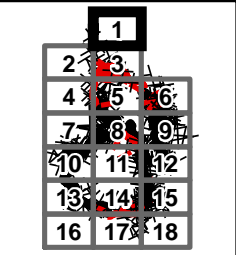
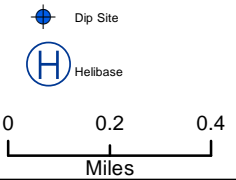
1	2	3
4	5	6
7	8	9
10	11	12
13	14	15
16	17	18





Glass Incident
CA-LNU-015947
Oct 6, 2020
0700 - 0700

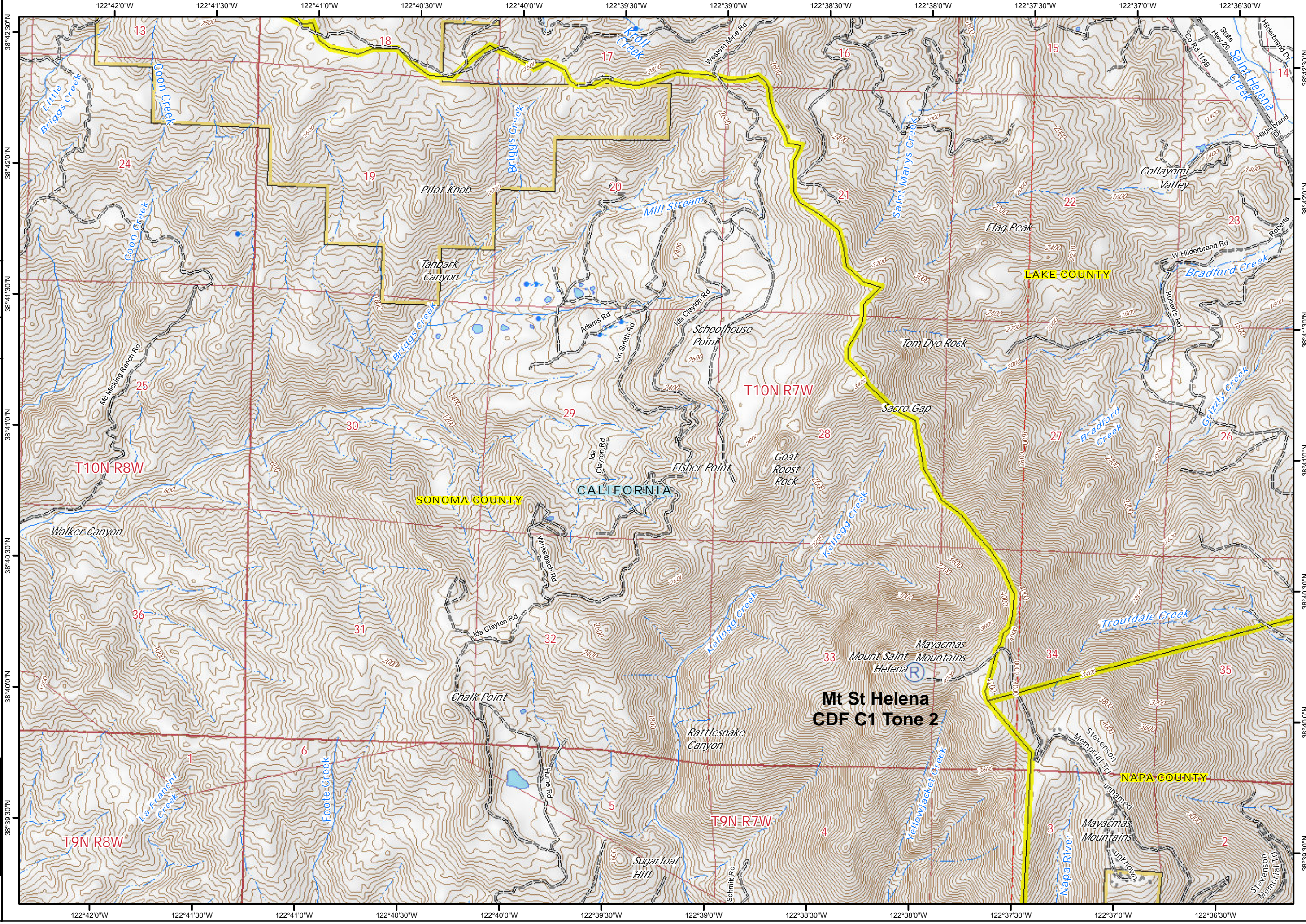
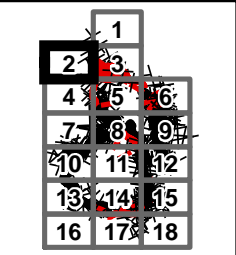
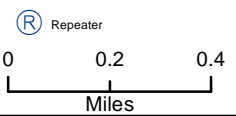
IAP Map
Page 1





Glass Incident
CA-LNU-015947
Oct 6, 2020
0700 - 0700

IAP Map
Page 2



122°42'0"W 122°41'30"W 122°41'0"W 122°40'30"W 122°40'0"W 122°39'30"W 122°39'0"W 122°38'30"W 122°38'0"W 122°37'30"W 122°37'0"W 122°36'30"W

38°42'30"N 38°42'0"N 38°41'30"N 38°41'0"N 38°40'30"N 38°40'0"N 38°39'30"N 38°39'0"N

Little Briggs Creek
Coon Creek
Briggs Creek
Mill Stream
Kroll Creek
Saint Marys Creek
Saint Helena
Collayomi Valley
Flag Peak
Walker Canyon
Fisher Point
Goat Roost Rock
Sacre Gap
Tom Dye Rock
Bradford Creek
Grizzly Creek
Walker Canyon
Chalk Point
Rattlesnake Canyon
Sugarloaf Hill
Yellowjacket Creek
Napa River
Stevenson Memorial Trail
Mayacmas Mountains
Mayacmas Mountains
unknown
Stevenson Memorial Trail

Pilot Knob
Tanbark Canyon
Schoolhouse Point
Goat Roost Rock
Mt St Helena
CDF C1 Tone 2

SONOMA COUNTY
LAKE COUNTY
NAPA COUNTY

T10N R8W
T10N R7W
T9N R7W
T9N R8W

13 18 17 16 15 14
24 19 20 21 22 23
25 30 29 28 27 26
36 31 32 33 34 35
1 6
2 3
4 5
7 8 9
10 11 12
13 14 15
16 17 18

Mc Macking Ranch Rd
Adams Rd
Vn Smith Rd
Ida Clayton Rd
Ida Clayton Rd
Ida Clayton Rd
Hume Rd
Schmitt Rd
Western Mine Rd
W Hilderbrand Rd
Roberts Rd
W Hilderbrand Rd
Roberts Rd
Roberts Rd
Stevenson Memorial Trail
Stevenson Memorial Trail
Stevenson Memorial Trail

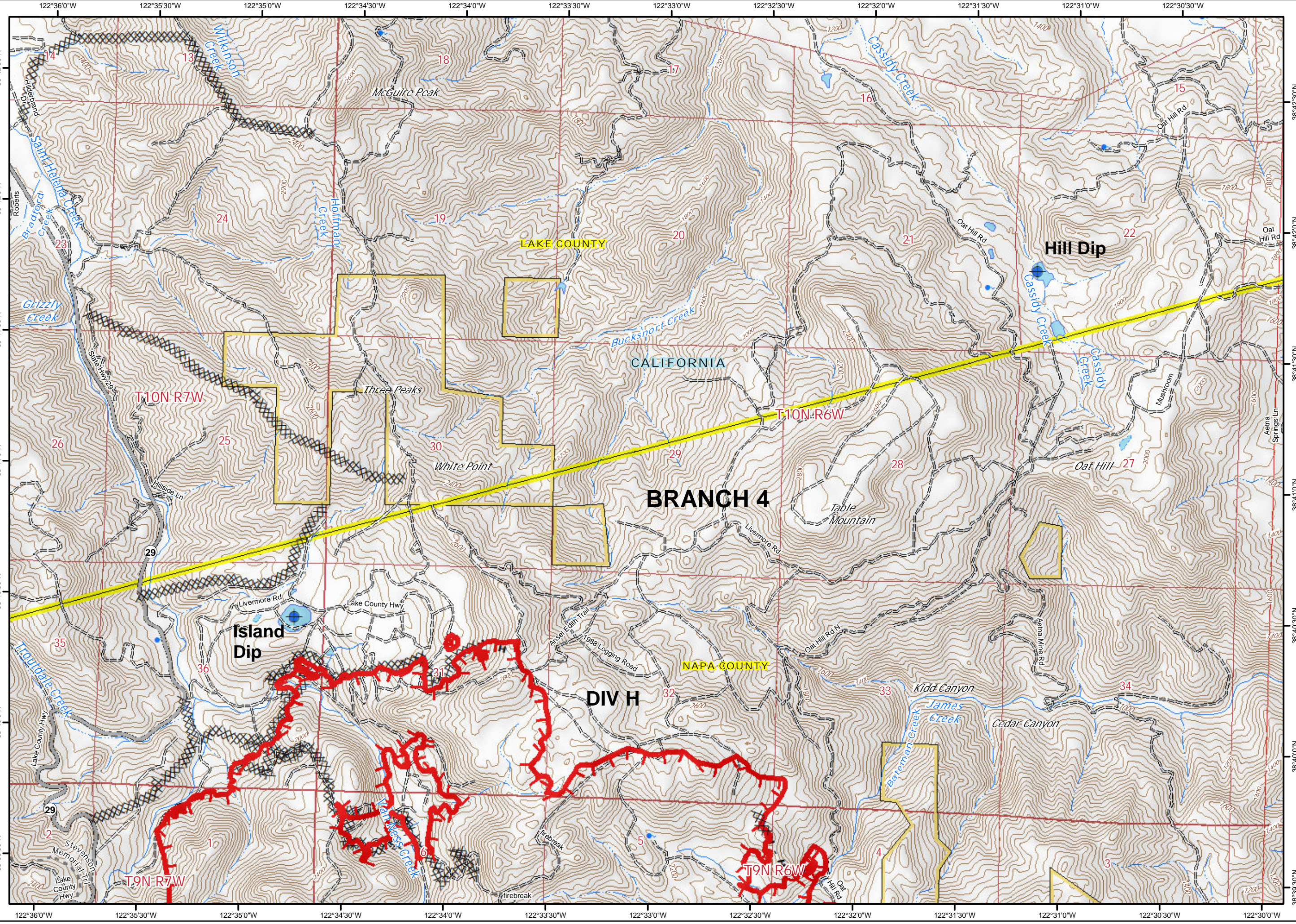
Repeater
0 0.2 0.4
Miles

Paul

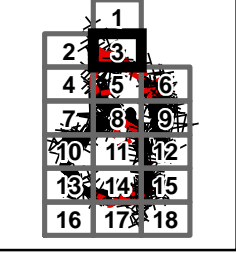
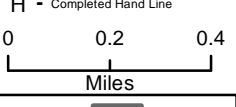


Glass Incident
CA-LNU-015947
Oct 6, 2020
0700 - 0700

IAP Map
Page 3



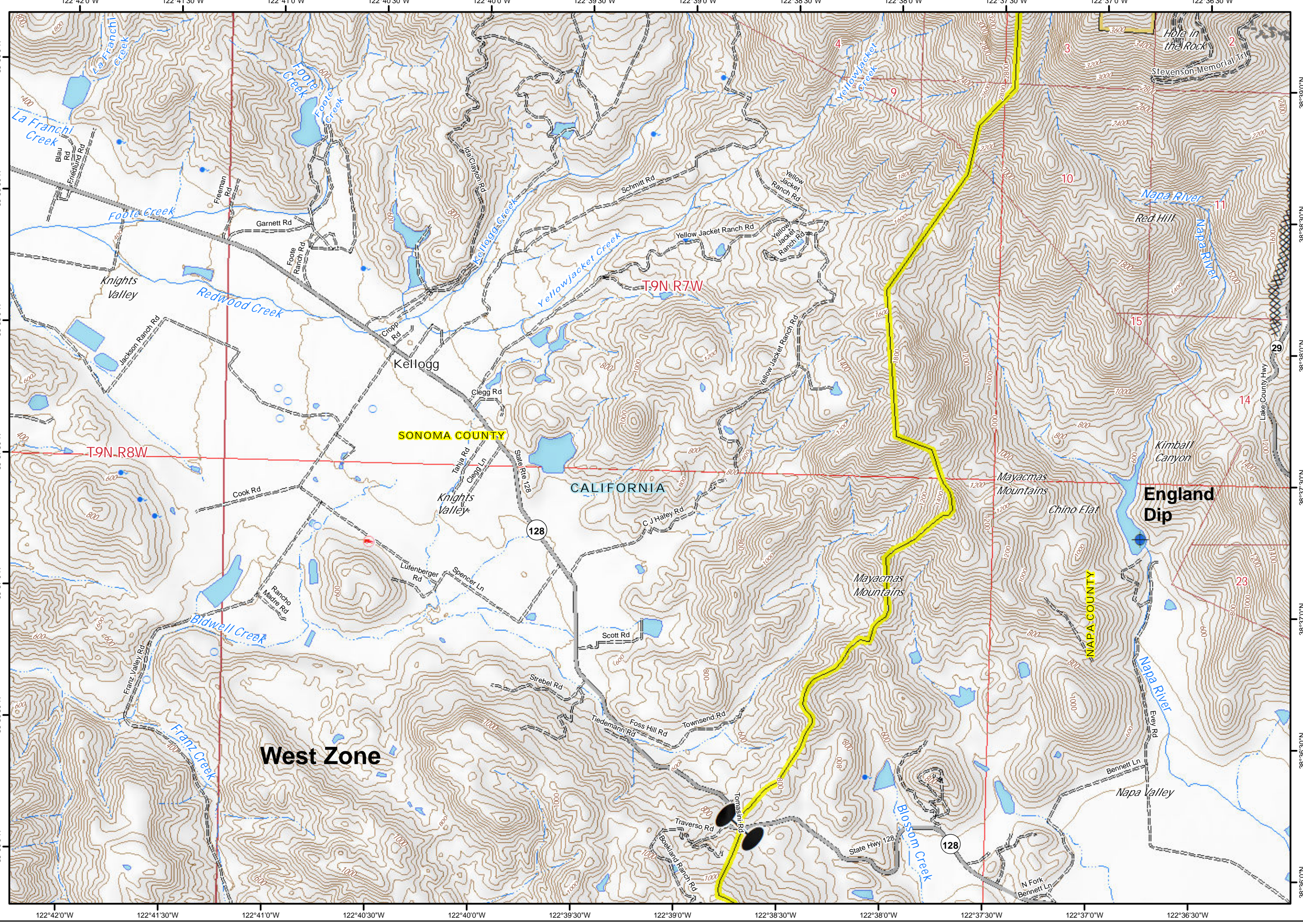
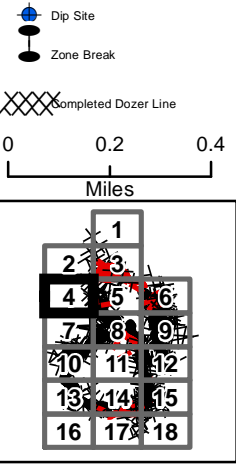
- Dip Site
- Uncontrolled Fire Edge
- Completed Dozer Line
- Completed Hand Line





Glass Incident
CA-LNU-015947
Oct 6, 2020
0700 - 0700

IAP Map
Page 4



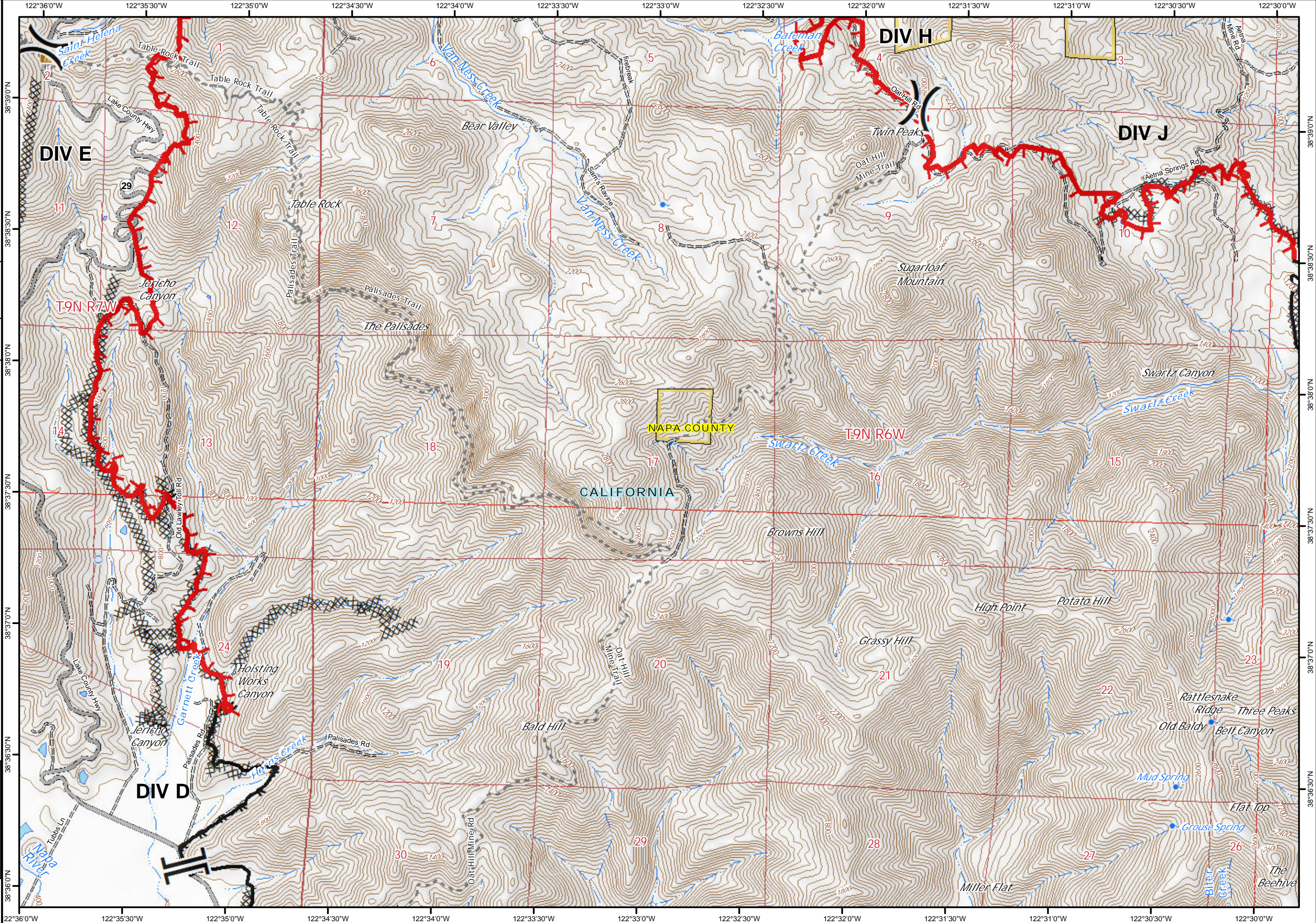
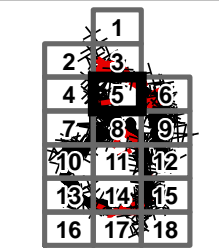
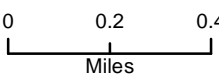
122°42'0"W 122°41'30"W 122°41'0"W 122°40'30"W 122°40'0"W 122°39'30"W 122°39'0"W 122°38'30"W 122°38'0"W 122°37'30"W 122°37'0"W 122°36'30"W



Glass Incident
CA-LNU-015947
Oct 6, 2020
0700 - 0700

IAP Map
Page 5

- () Division Break
- || Branch Break
- ▬ Uncontrolled Fire Edge
- ▬ Contained Line
- XXXX Completed Dozer Line
- H - Completed Hand Line
- R - Road as Completed Line





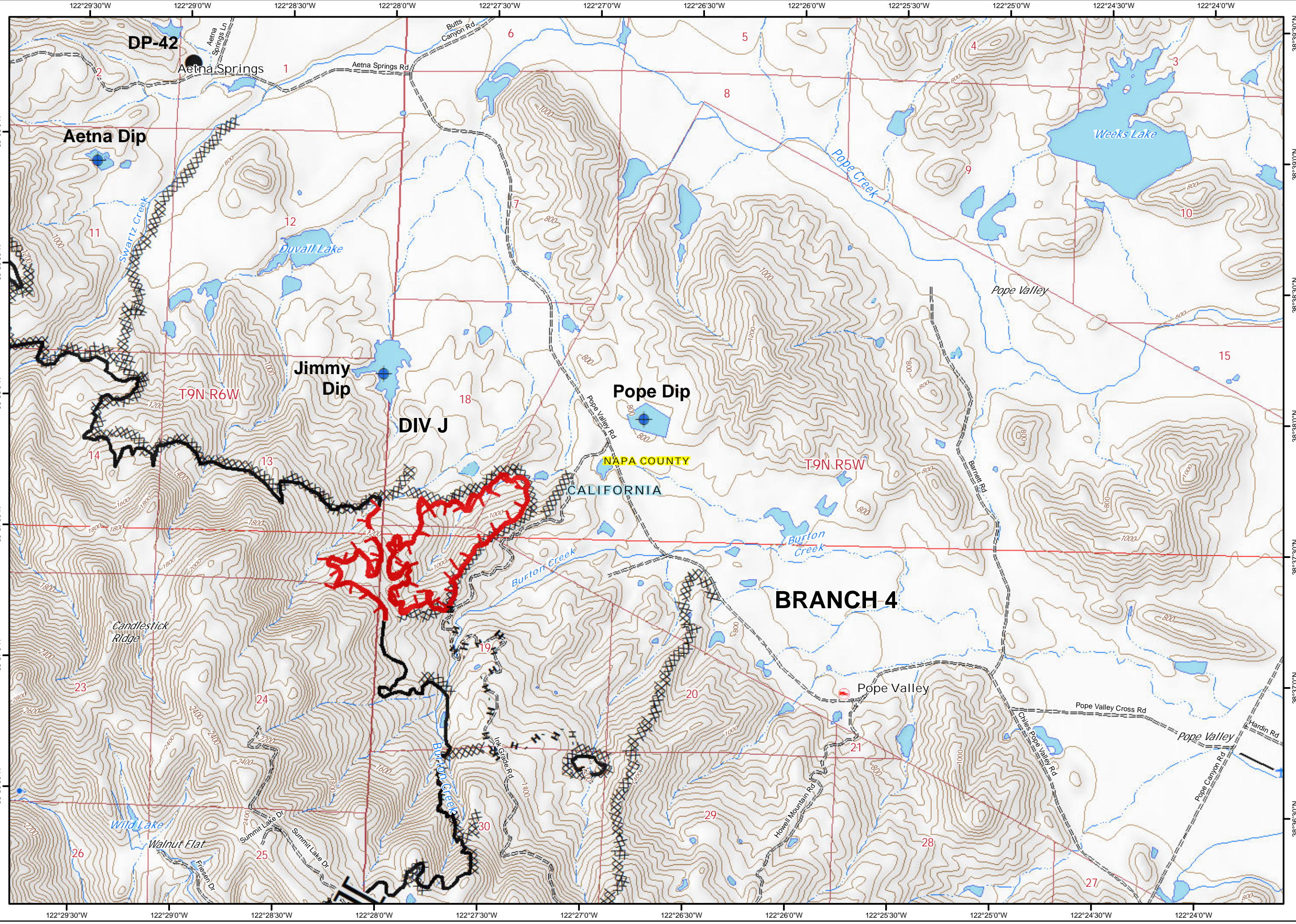
Glass Incident
 CA-LNU-015947
 Oct 6, 2020
 0700 - 0700

IAP Map
 Page 6

- Dip Site
- Drop Point
- Branch Break
- Uncontrolled Fire Edge
- Contained Line
- Completed Dozer Line
- Completed Hand Line
- Road as Completed Line

0 0.2 0.4
 Miles

1
2 3
4 5 6
7 8 9
10 11 12
13 14 15
16 17 18

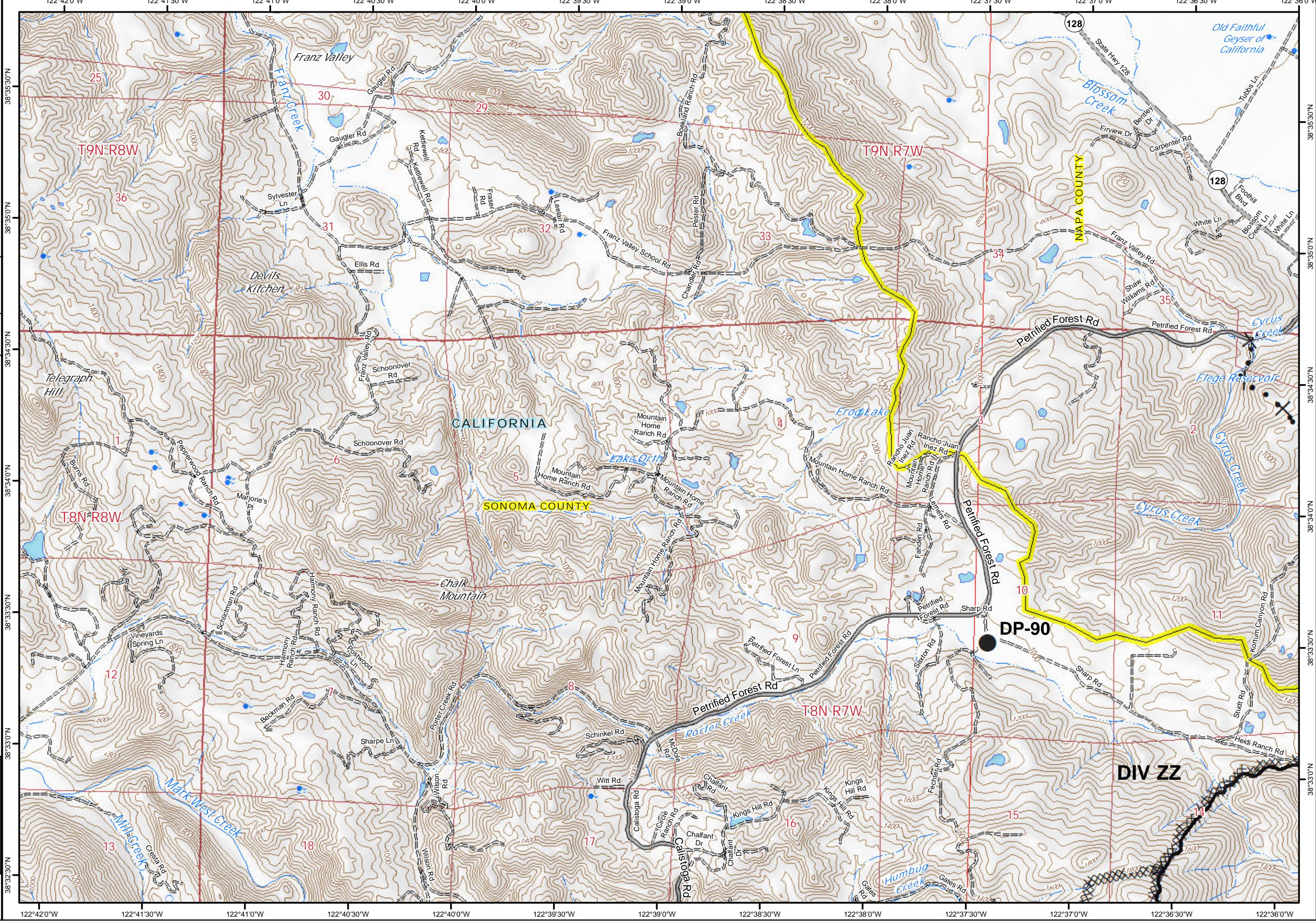
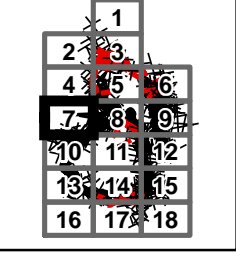
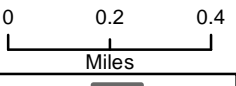




Glass Incident
CA-LNU-015947
Oct 6, 2020
0700 - 0700

IAP Map
Page 7

- Drop Point
- ▬ Contained Line
- XXXX Completed Dozer Line
- ✕ Proposed Dozer Line

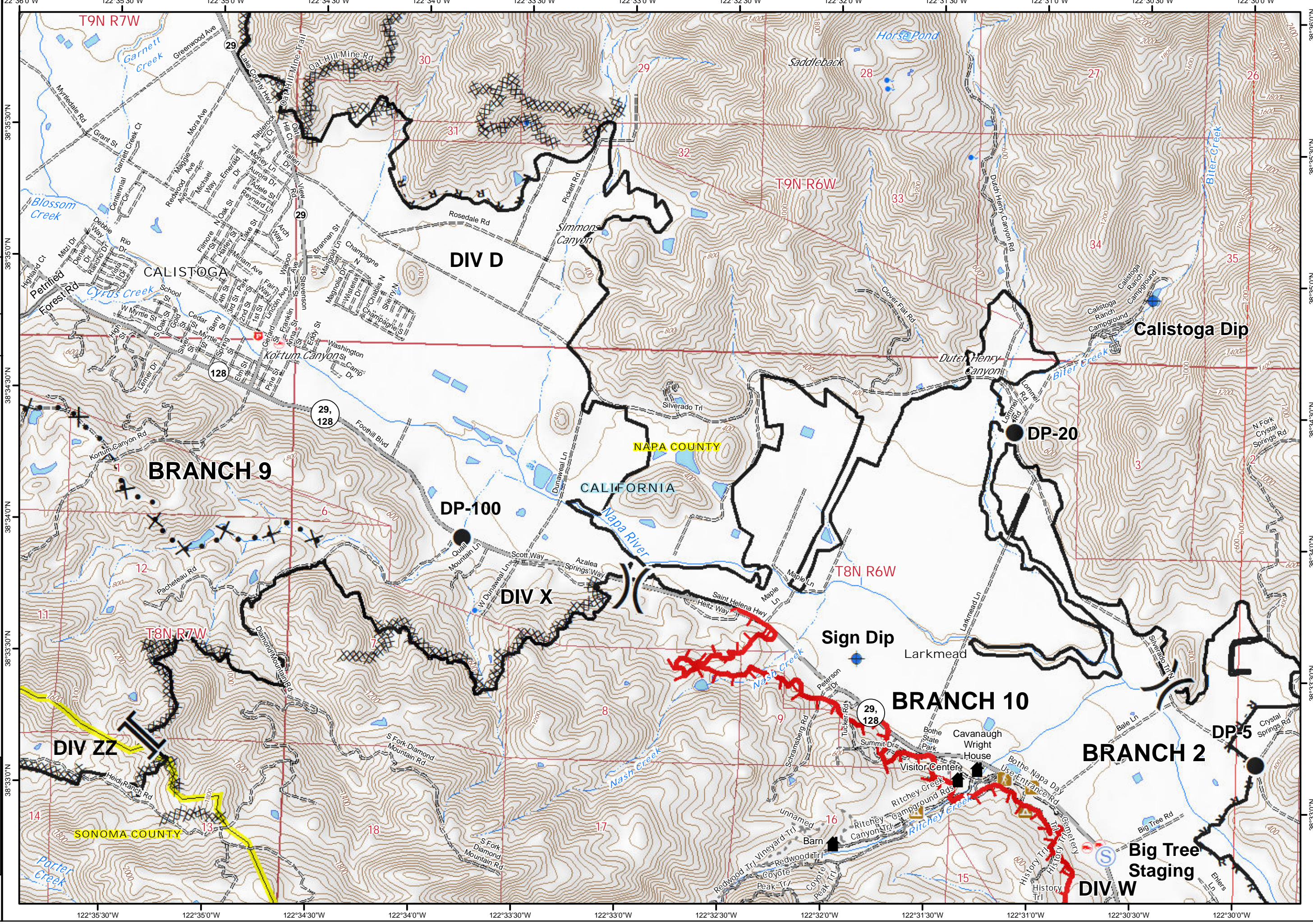
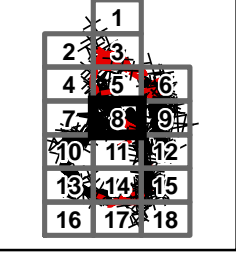
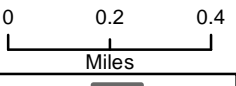




Glass Incident
CA-LNU-015947
Oct 6, 2020
0700 - 0700

IAP Map
Page 8

- Dip Site
- Drop Point
- Staging Area
- Division Break
- Branch Break
- Historic Building
- Uncontrolled Fire Edge
- Contained Line
- Completed Dozer Line
- Completed Hand Line
- Road as Completed Line
- Proposed Dozer Line

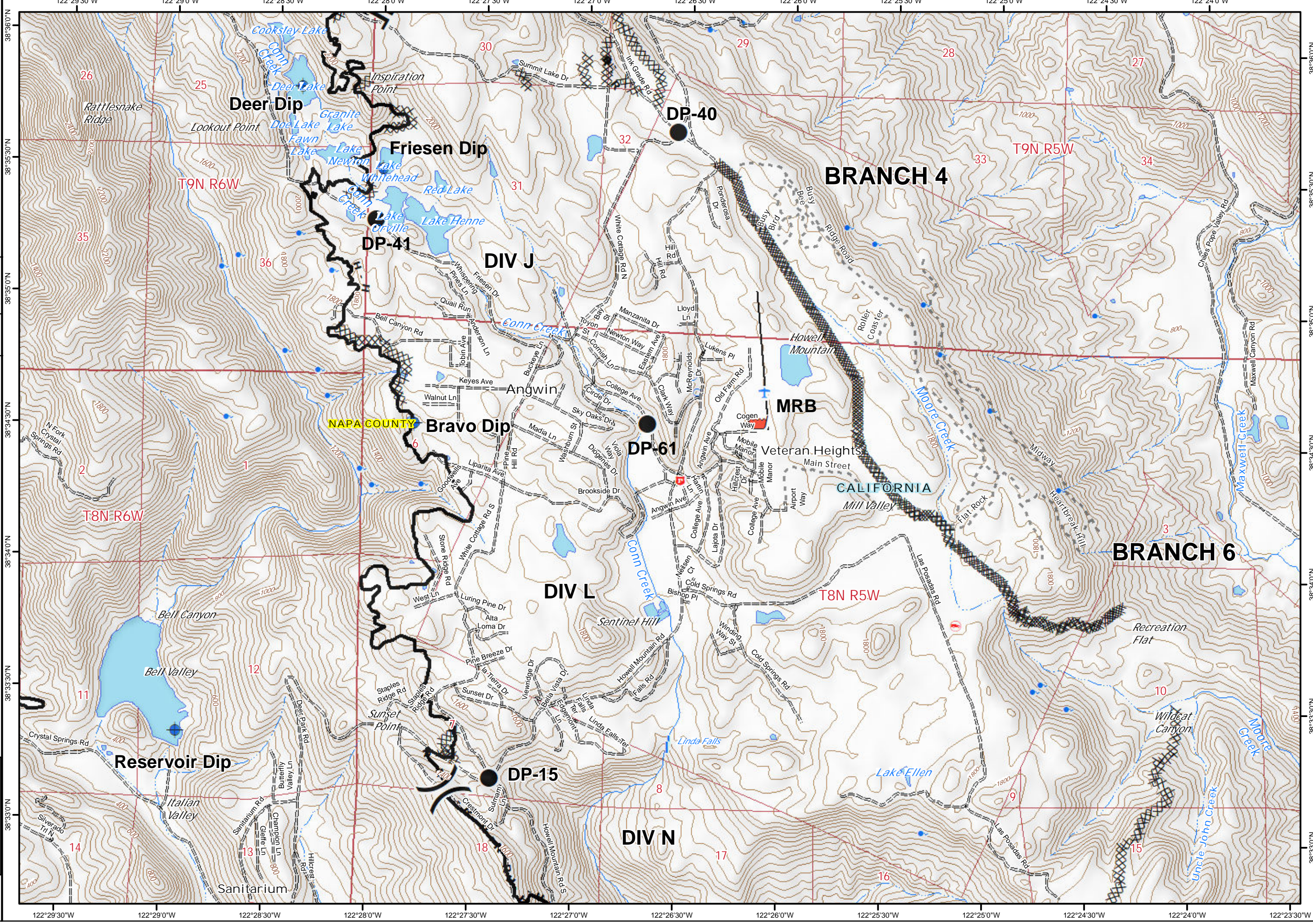
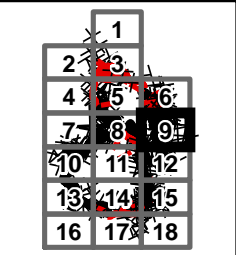
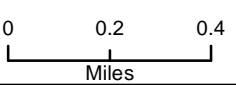




Glass Incident
CA-LNU-015947
Oct 6, 2020
0700 - 0700

IAP Map
Page 9

- Dip Site
- Drop Point
- Retardant/Mud Pit
- Division Break
- Branch Break
- Contained Line
- Completed Dozer Line
- Completed Hand Line
- Road as Completed Line

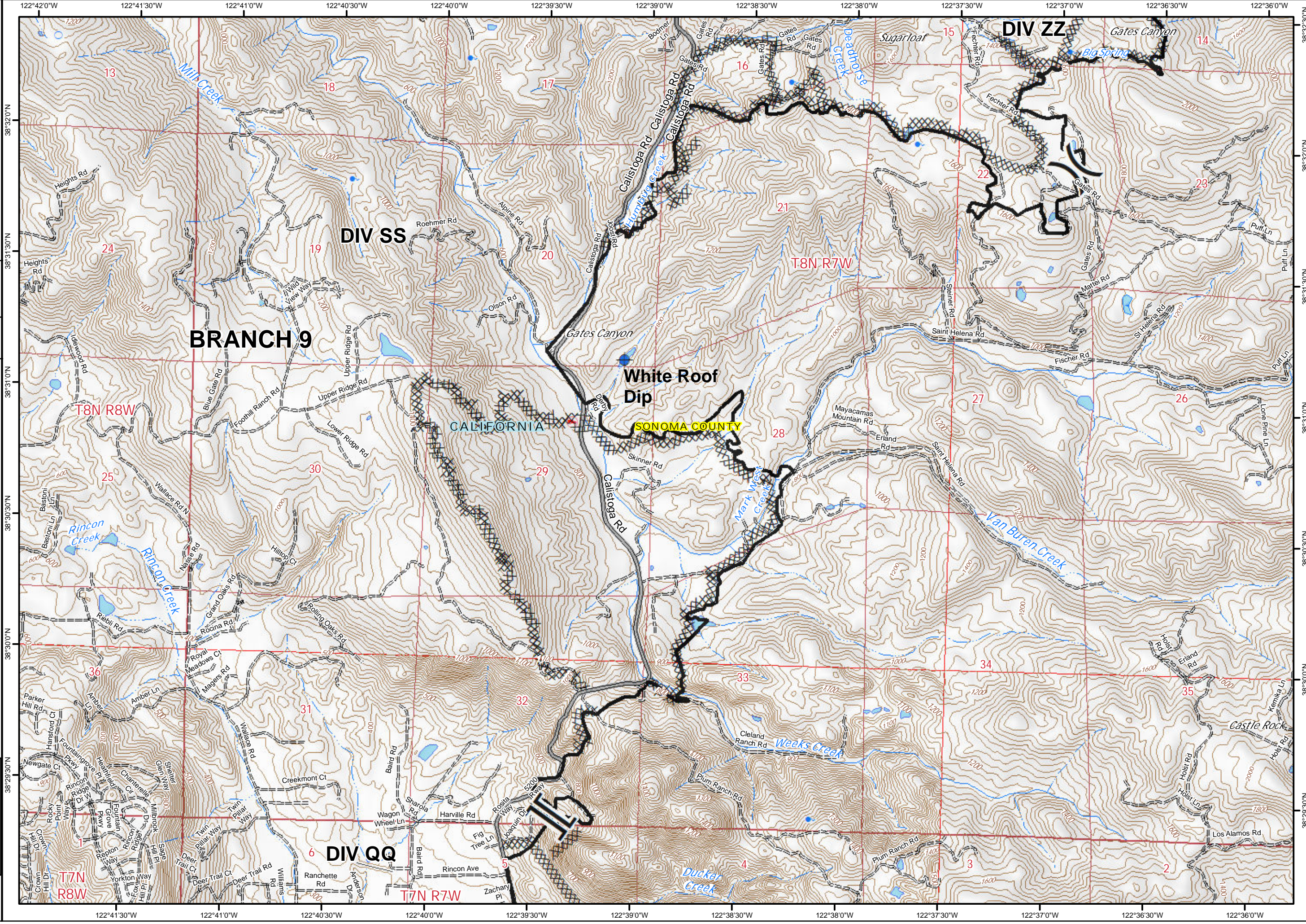
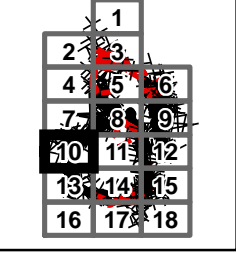
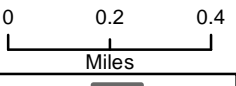




Glass Incident
CA-LNU-015947
Oct 6, 2020
0700 - 0700

IAP Map
Page 10

- Dip Site
- Division Break
- Branch Break
- Contained Line
- Completed Dozer Line

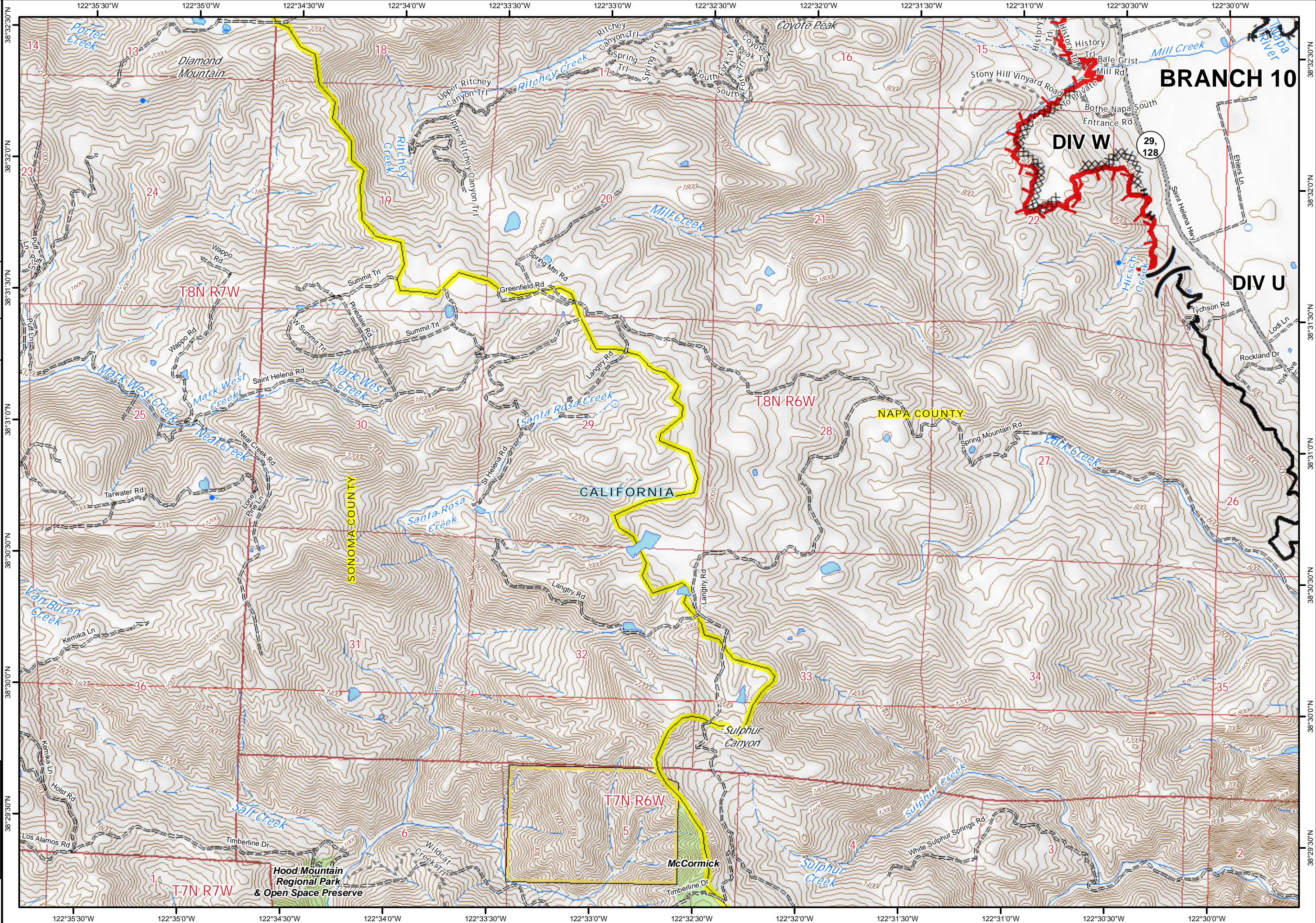
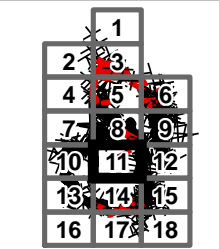
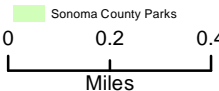




Glass Incident
CA-LNU-015947
Oct 6, 2020
0700 - 0700

IAP Map
Page 11

- () Division Break
- Uncontrolled Fire Edge
- Contained Line
- Completed Dozer Line
- H - Completed Hand Line
- R - Road as Completed Line

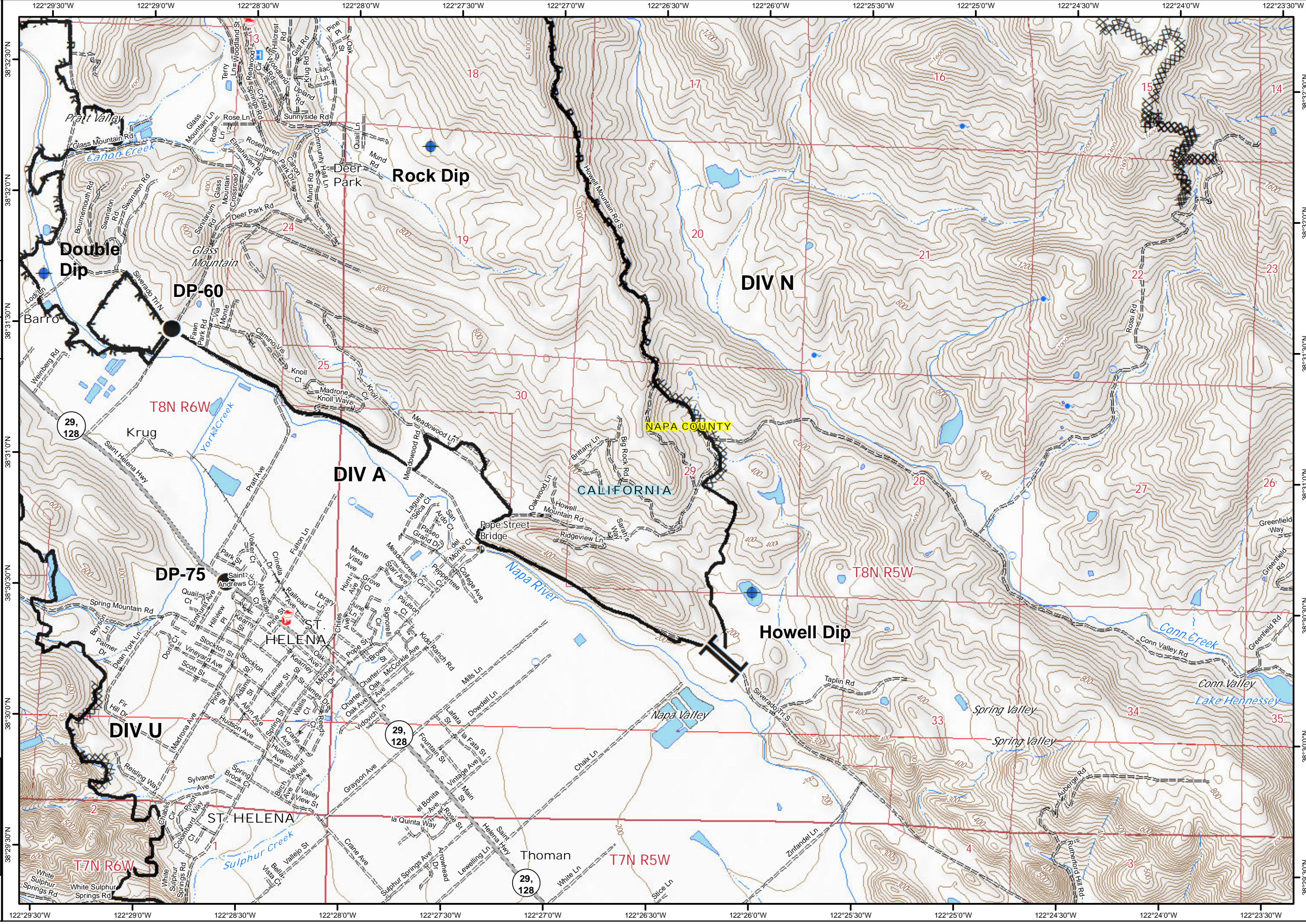
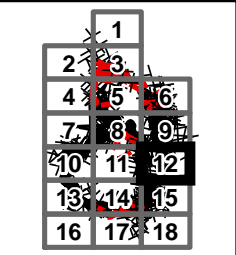
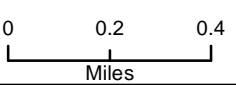




Glass Incident
CA-LNU-015947
Oct 6, 2020
0700 - 0700

IAP Map
Page 12

- Dip Site
- Drop Point
- Branch Break
- Contained Line
- Completed Dozer Line
- Completed Hand Line
- Road as Completed Line





Glass Incident
CA-LNU-015947
Oct 6, 2020
0700 - 0700

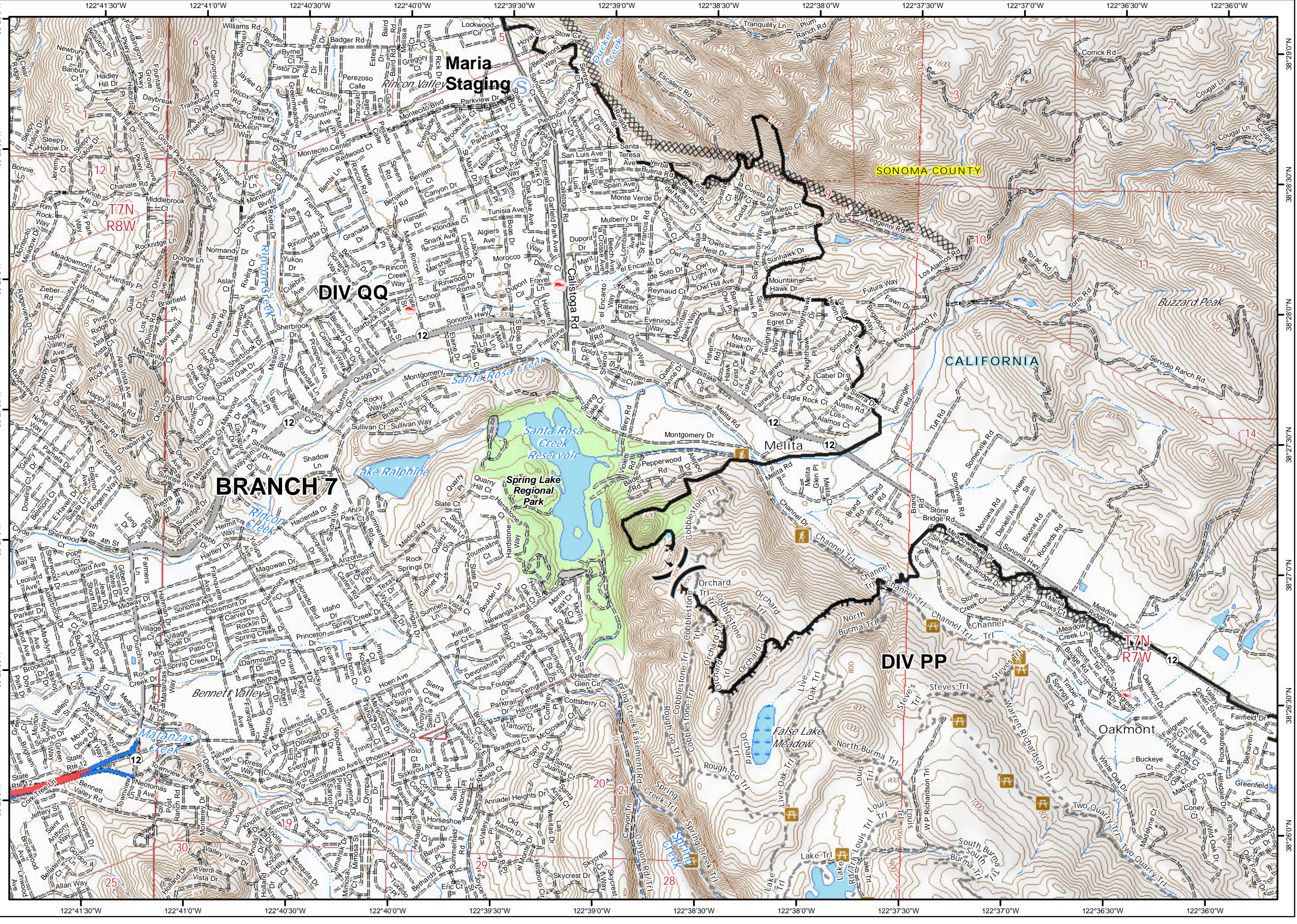
IAP Map
Page 13

S Staging Area
() Division Break
--- Contained Line
XXXX Completed Dozer Line
H Completed Hand Line

0 0.2 0.4
Miles

1	2	3
4	5	6
7	8	9
10	11	12
13	14	15
16	17	18

Paul

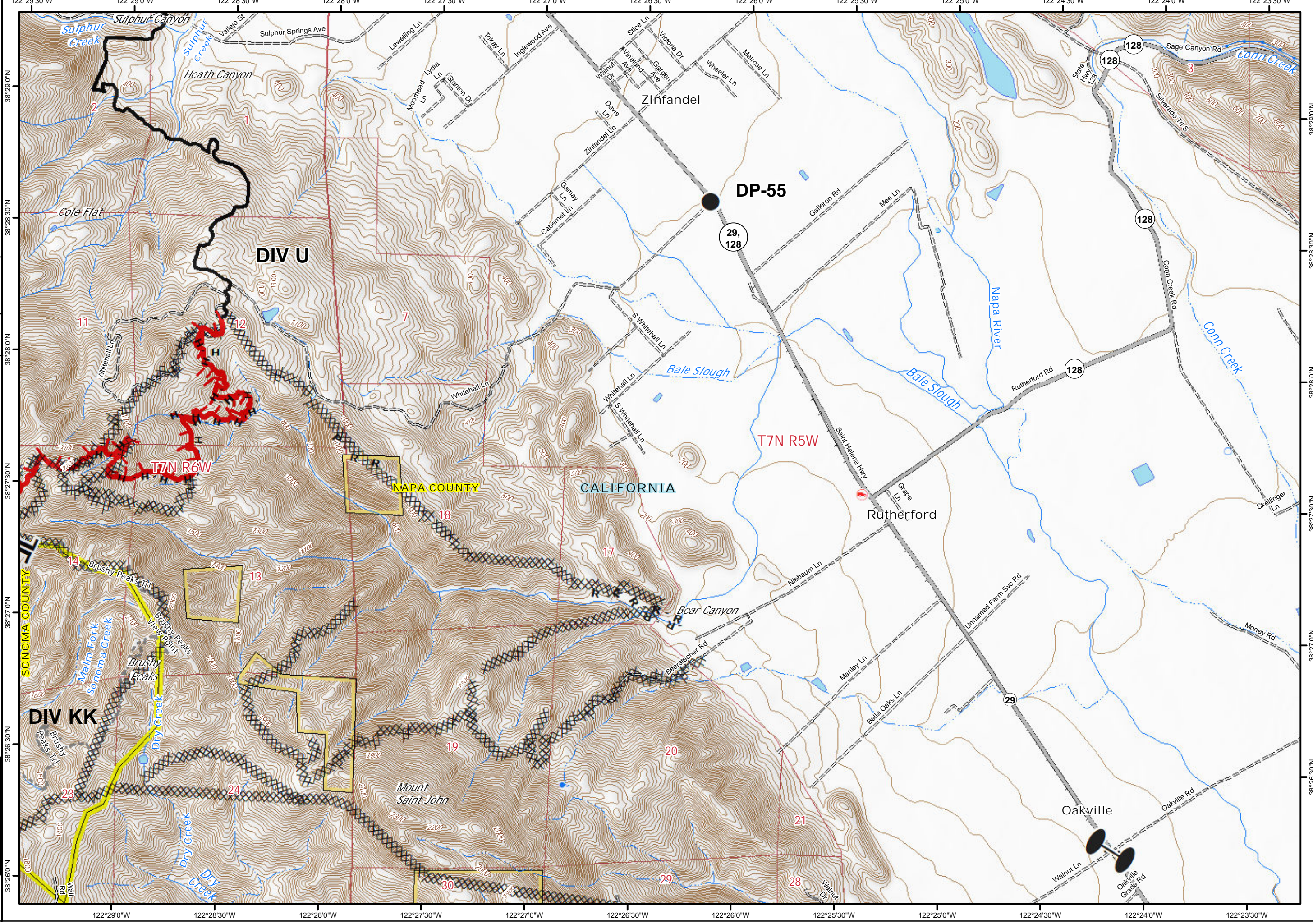
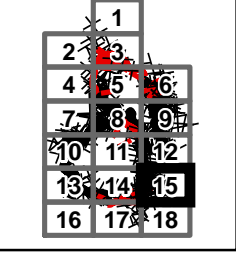
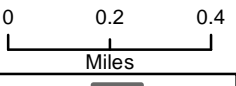




Glass Incident
CA-LNU-015947
Oct 6, 2020
0700 - 0700

IAP Map
Page 15

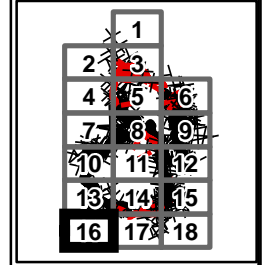
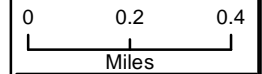
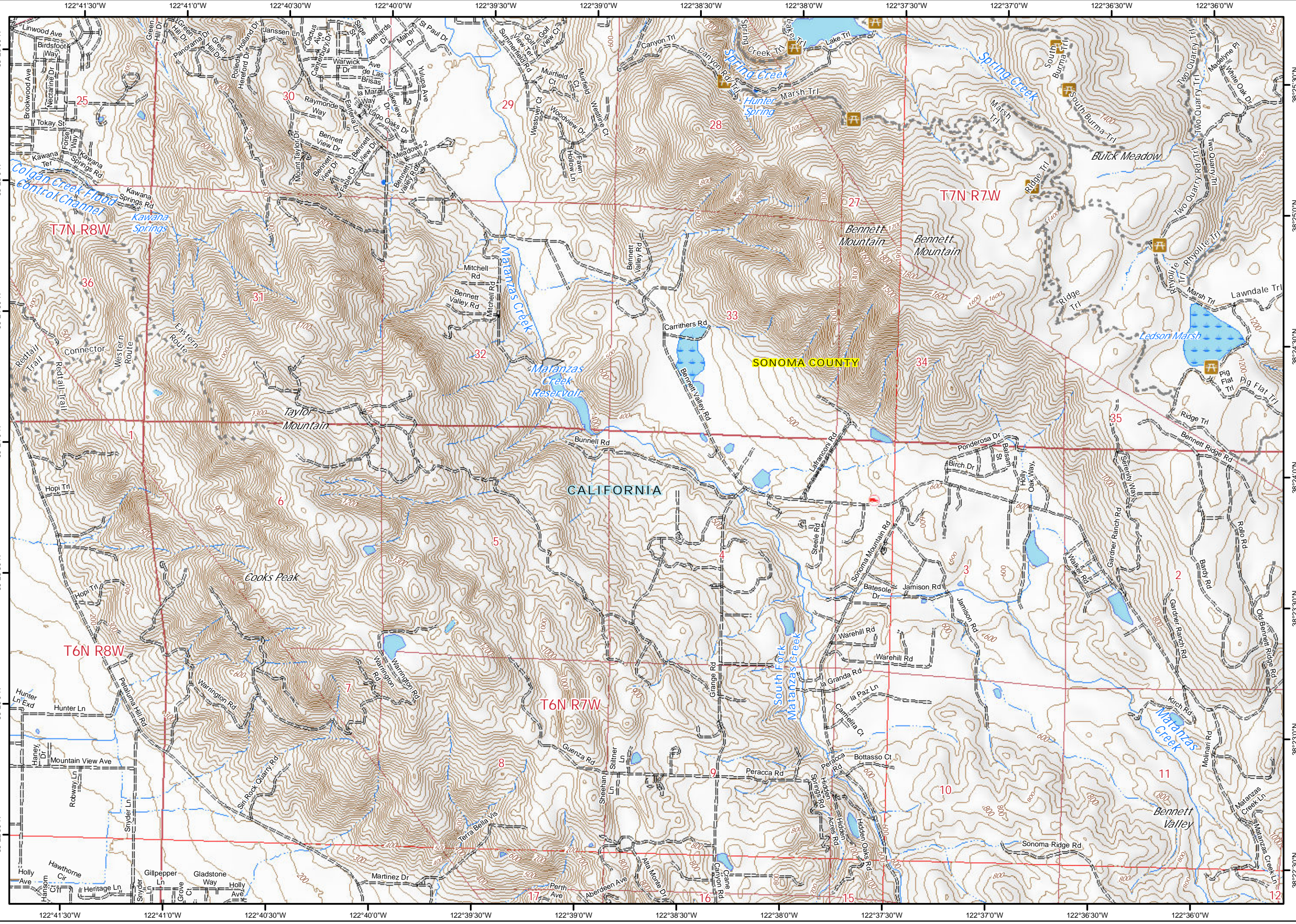
- Drop Point
- Zone Break
- ▬ Uncontrolled Fire Edge
- ▬ Contained Line
- ▬ Completed Dozer Line
- H - Completed Hand Line
- R - Road as Completed Line





Glass Incident
CA-LNU-015947
Oct 6, 2020
0700 - 0700

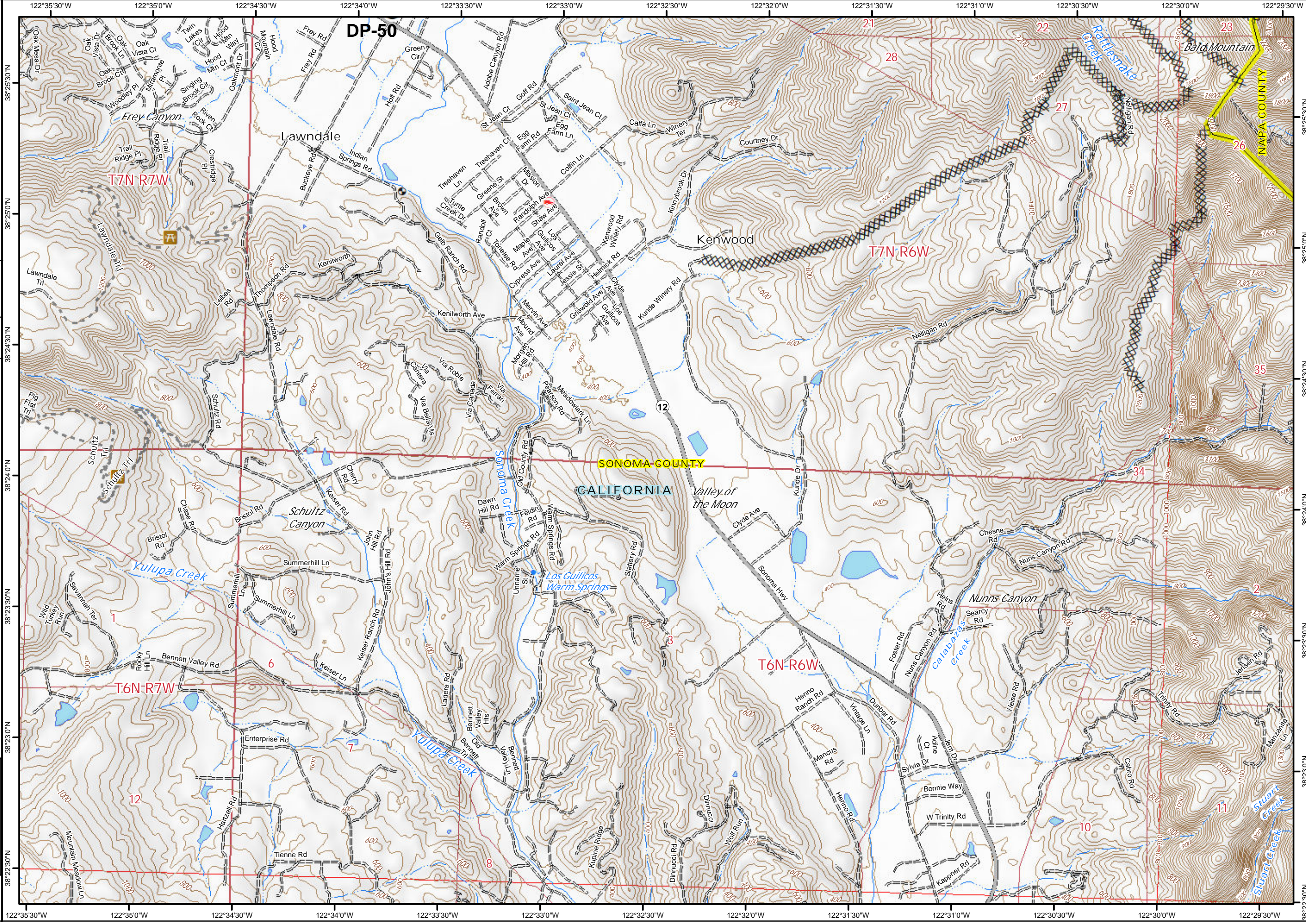
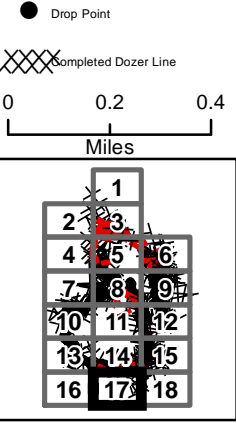
IAP Map
Page 16





Glass Incident
CA-LNU-015947
Oct 6, 2020
0700 - 0700

IAP Map
Page 17





Glass Incident
CA-LNU-015947
Oct 6, 2020
0700 - 0700

IAP Map
Page 18

