



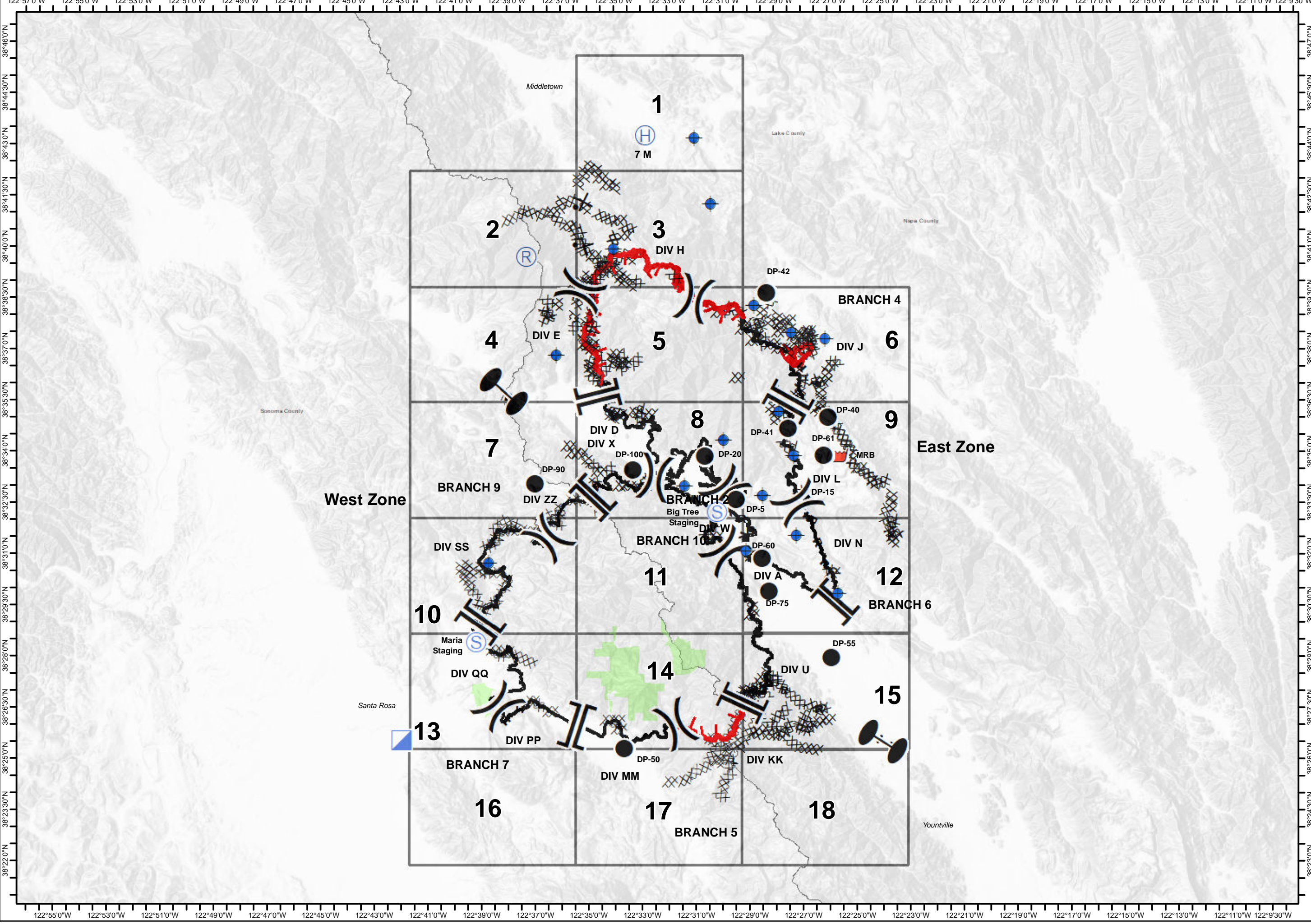
Glass Incident
CA-LNU-015947
Oct 7, 2020
 0700 - 0700

IAP Map
 Page 0

- Dip Site
- Drop Point
- Helibase
- Incident Command Post
- Repeater
- Retardant/Mud Pit
- Staging Area
- Zone Break
- Division Break
- Branch Break
- Uncontrolled Fire Edge
- Contained Line
- Completed Dozer Line
- Completed Hand Line
- Road as Completed Line
- Proposed Dozer Line
- County Boundary
- Sonoma County Parks

0 1.5 3
Miles

1	2	3
4	5	6
7	8	9
10	11	12
13	14	15
16	17	18

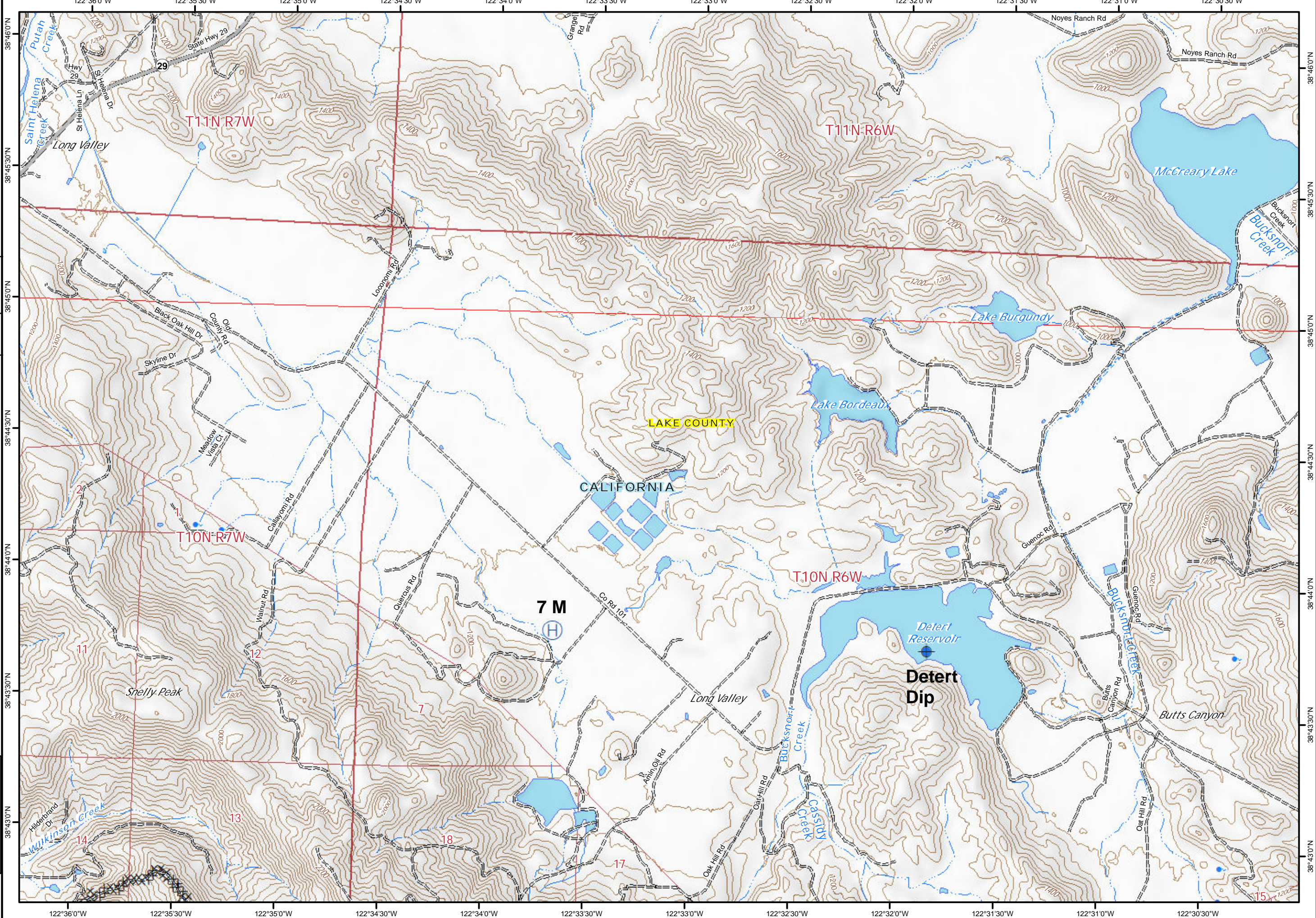




Glass Incident
CA-LNU-015947
Oct 7, 2020
0700 - 0700

IAP Map
Page 1

Dip Site
 Helibase
 Completed Dozer Line
 0 0.2 0.4 Miles





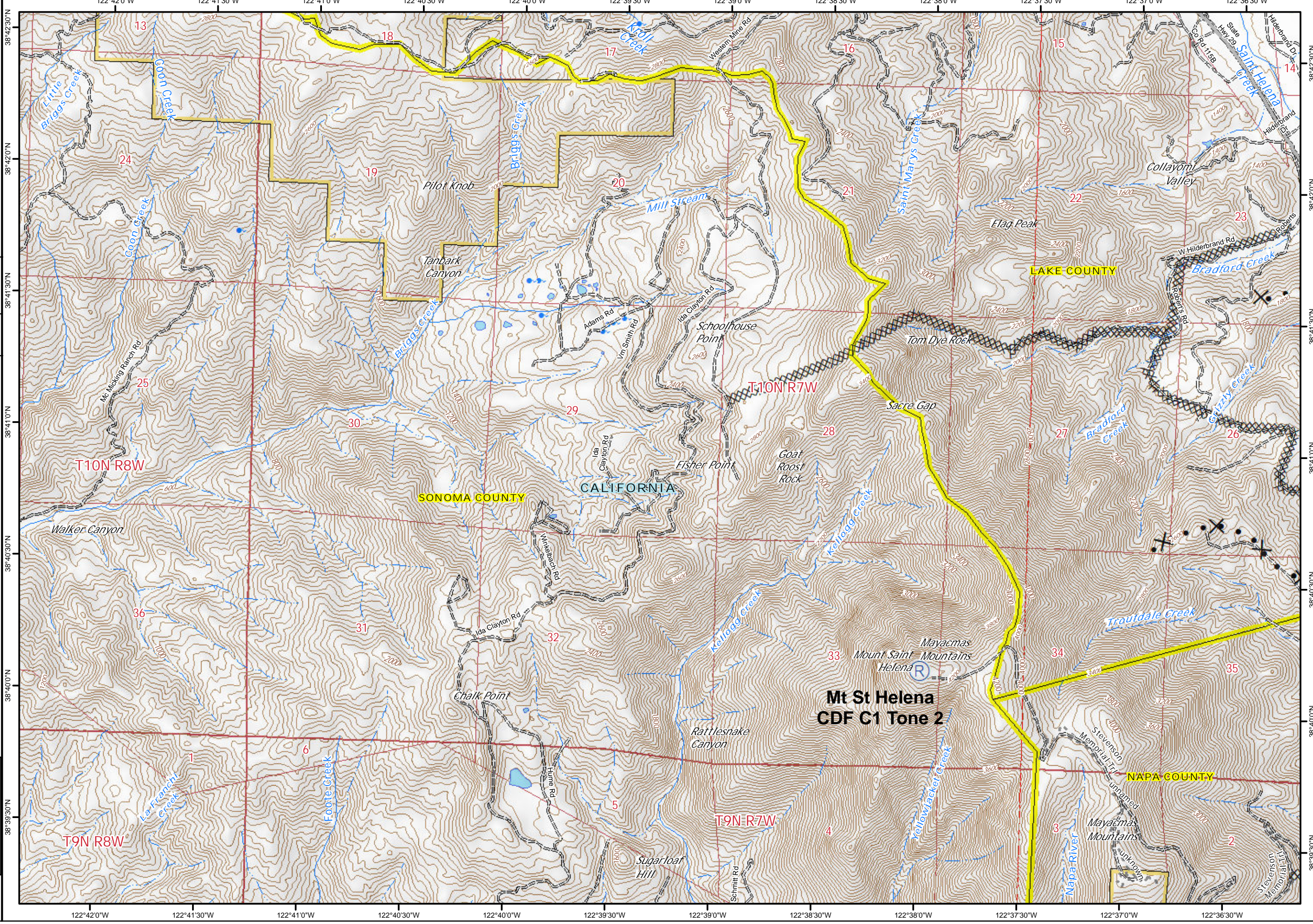
Glass Incident
CA-LNU-015947
Oct 7, 2020
0700 - 0700

IAP Map
Page 2

Repeater
Completed Dozer Line
Proposed Dozer Line

0 0.2 0.4
Miles

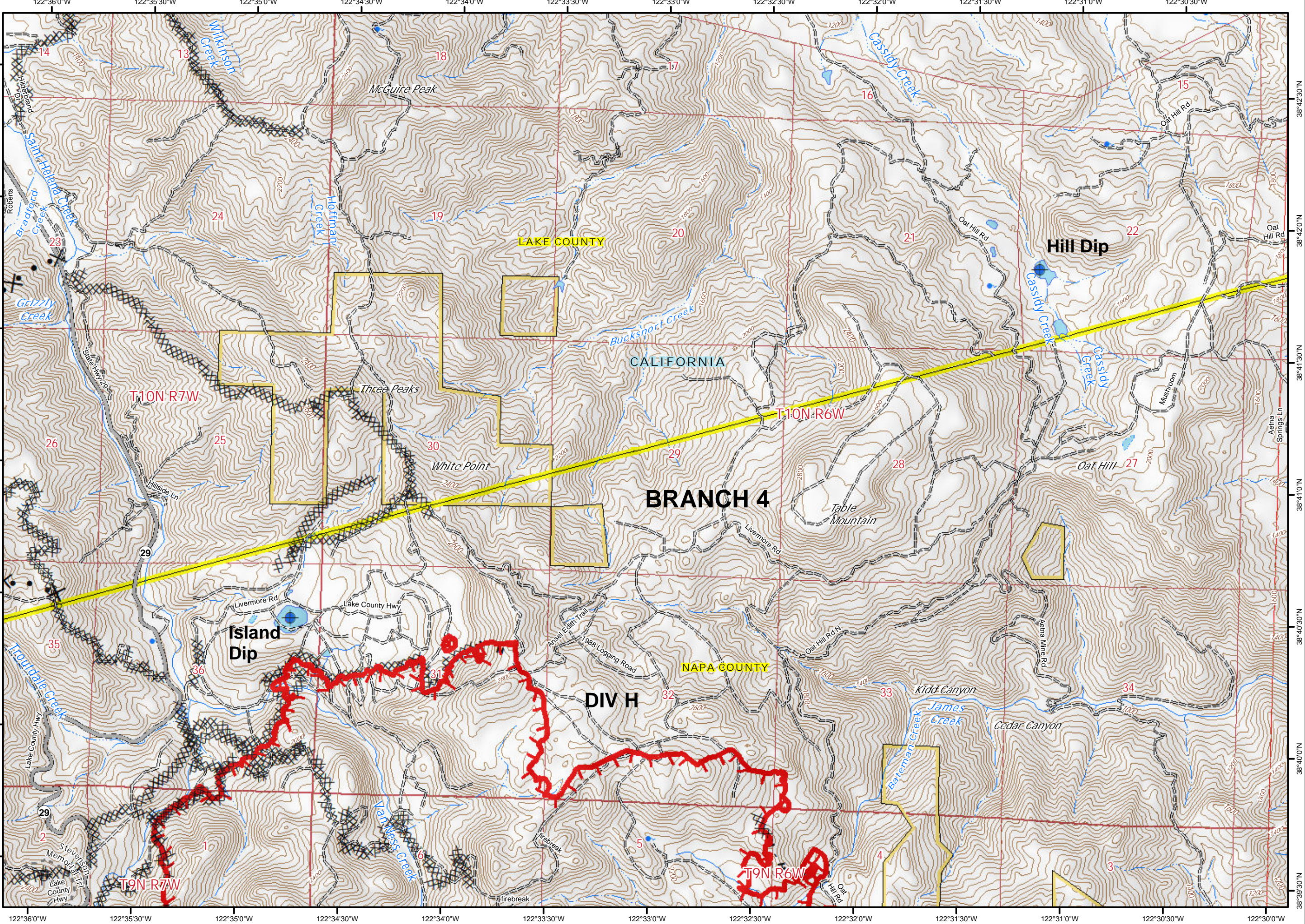
1	2	3
4	5	6
7	8	9
10	11	12
13	14	15
16	17	18



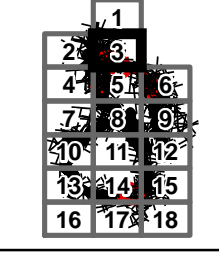
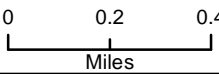


Glass Incident
CA-LNU-015947
Oct 7, 2020
0700 - 0700

IAP Map
Page 3



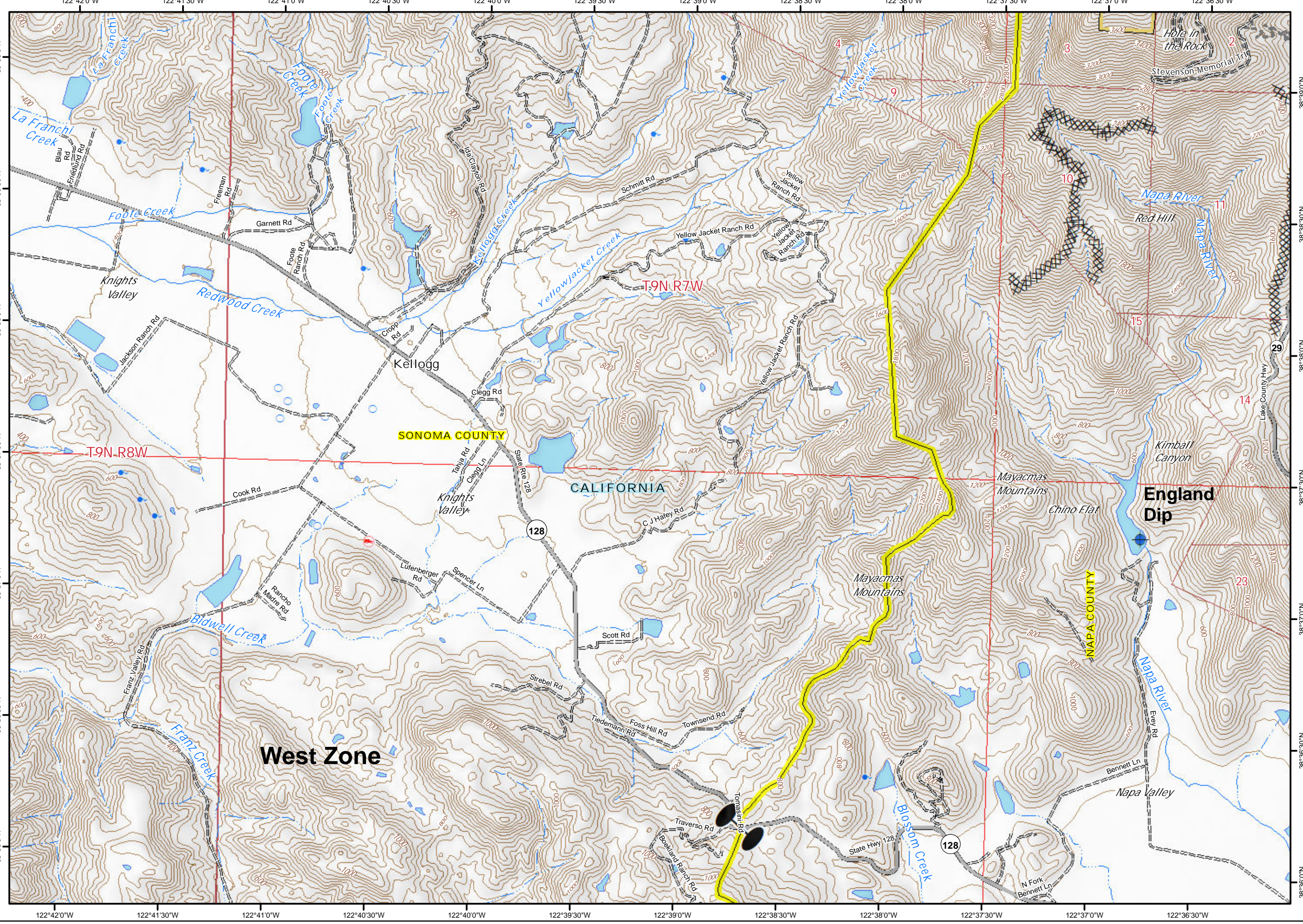
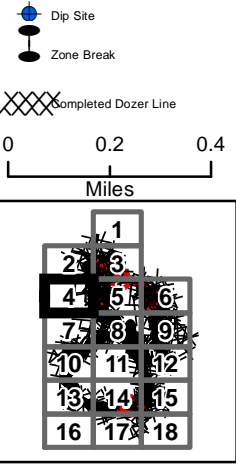
- Dip Site
- Uncontrolled Fire Edge
- Completed Dozer Line
- Completed Hand Line
- Proposed Dozer Line





Glass Incident
CA-LNU-015947
Oct 7, 2020
0700 - 0700

IAP Map
Page 4

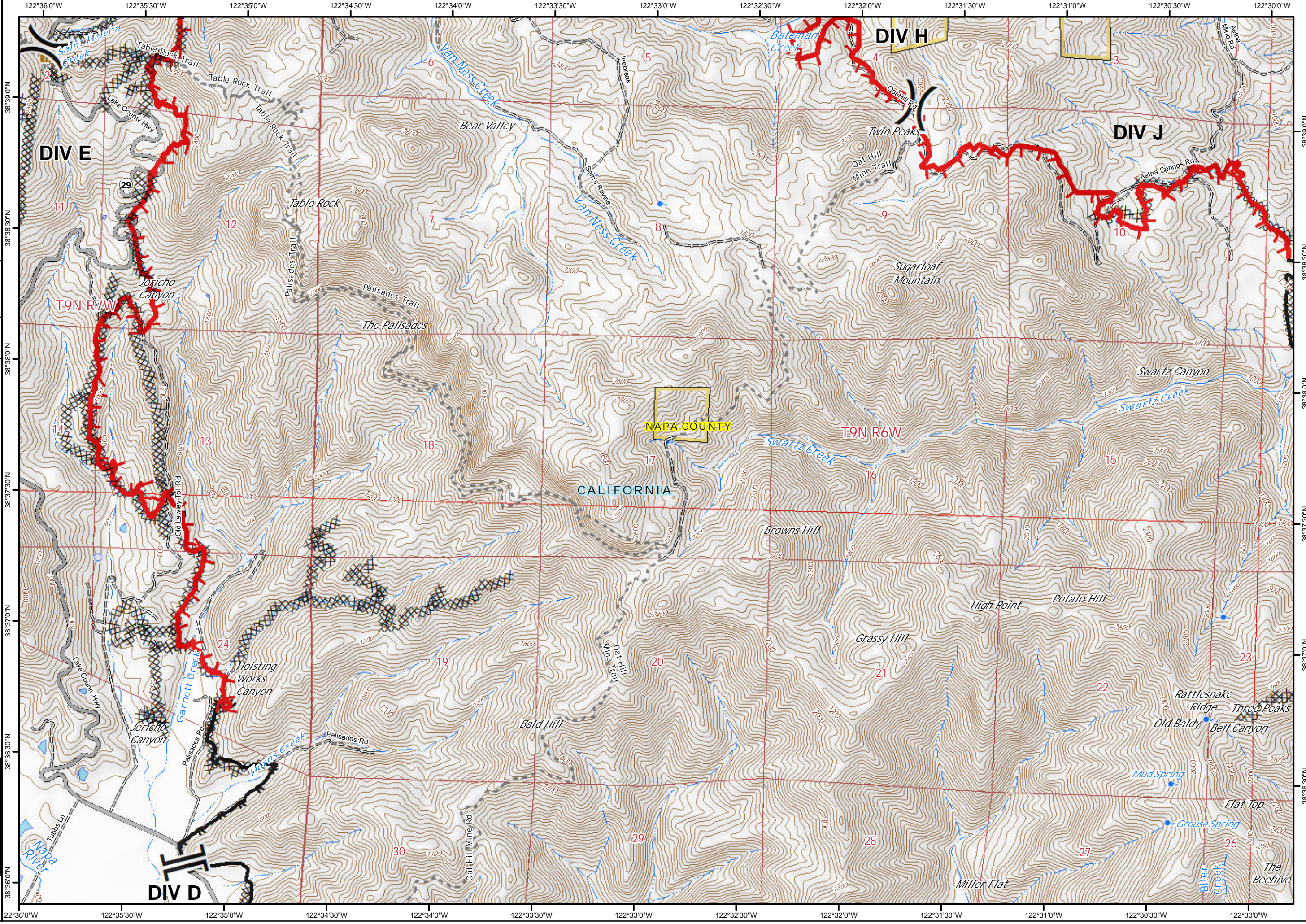
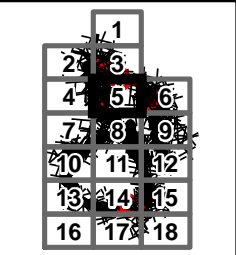
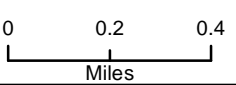




Glass Incident
CA-LNU-015947
Oct 7, 2020
0700 - 0700

IAP Map
Page 5

- () Division Break
- || Branch Break
- ▬ Uncontrolled Fire Edge
- ▬ Contained Line
- XXXX Completed Dozer Line
- H - Completed Hand Line
- R - Road as Completed Line

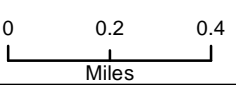




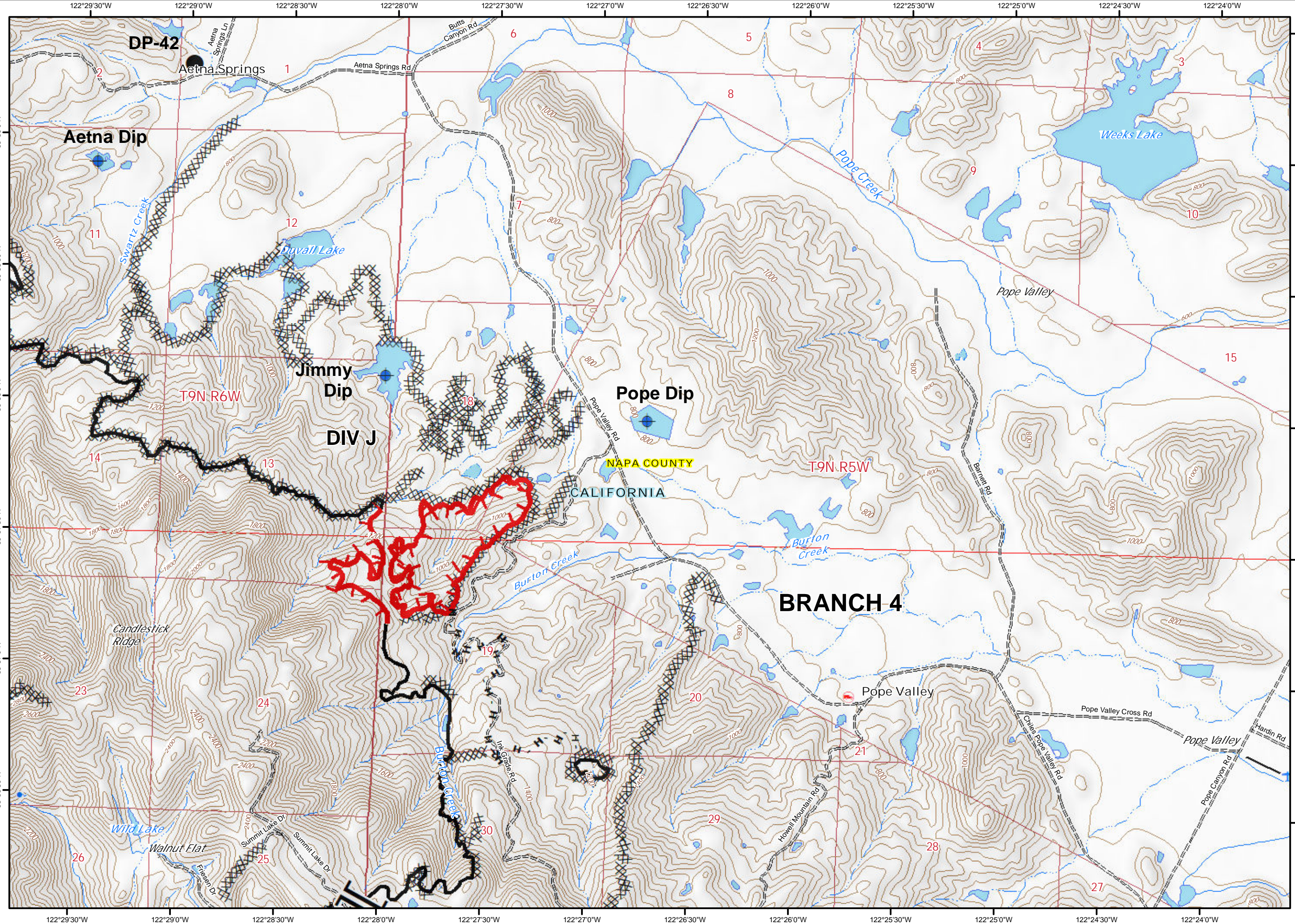
Glass Incident
 CA-LNU-015947
 Oct 7, 2020
 0700 - 0700

IAP Map
 Page 6

- Dip Site
- Drop Point
- Branch Break
- Uncontrolled Fire Edge
- Contained Line
- Completed Dozer Line
- Completed Hand Line
- Road as Completed Line



1
2 3
4 5 6
7 8 9
10 11 12
13 14 15
16 17 18

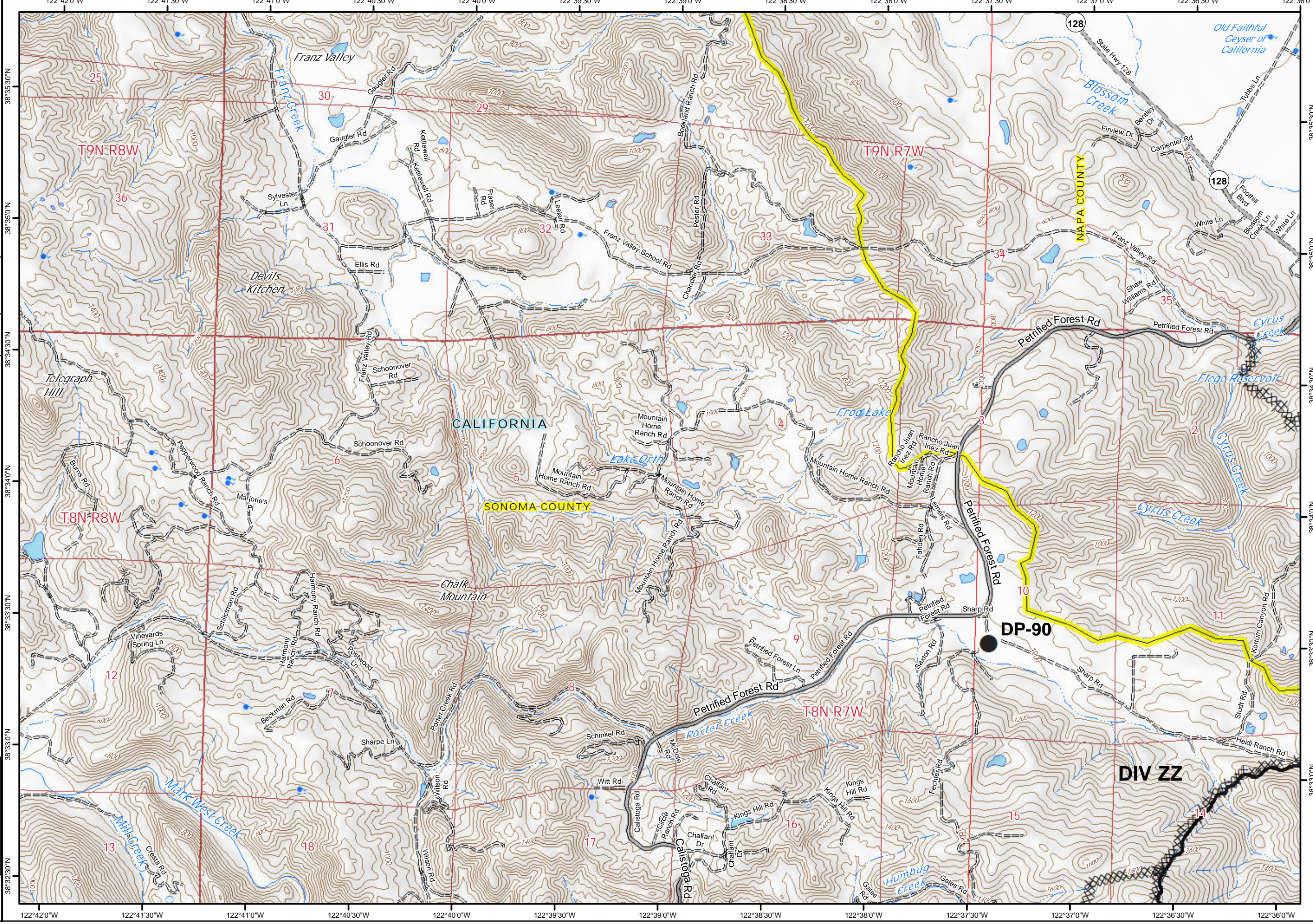
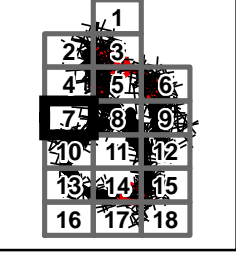
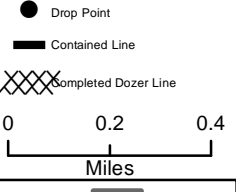


122°29'30"W 122°29'0"W 122°28'30"W 122°28'0"W 122°27'30"W 122°27'0"W 122°26'30"W 122°26'0"W 122°25'30"W 122°25'0"W 122°24'30"W 122°24'0"W



Glass Incident
CA-LNU-015947
Oct 7, 2020
0700 - 0700

IAP Map
Page 7



Map labels include: Franz Valley, Devils Kitchen, Telegraph Hill, Chalk Mountain, Frog Lake, Fiege Reservoir, Petrifed Forest Rd, State Hwy 128, Napa County, Sonoma County, California, and various road names like Gaugler Rd, Sylvester Ln, Ellis Rd, Schoonover Rd, etc.

DP-90

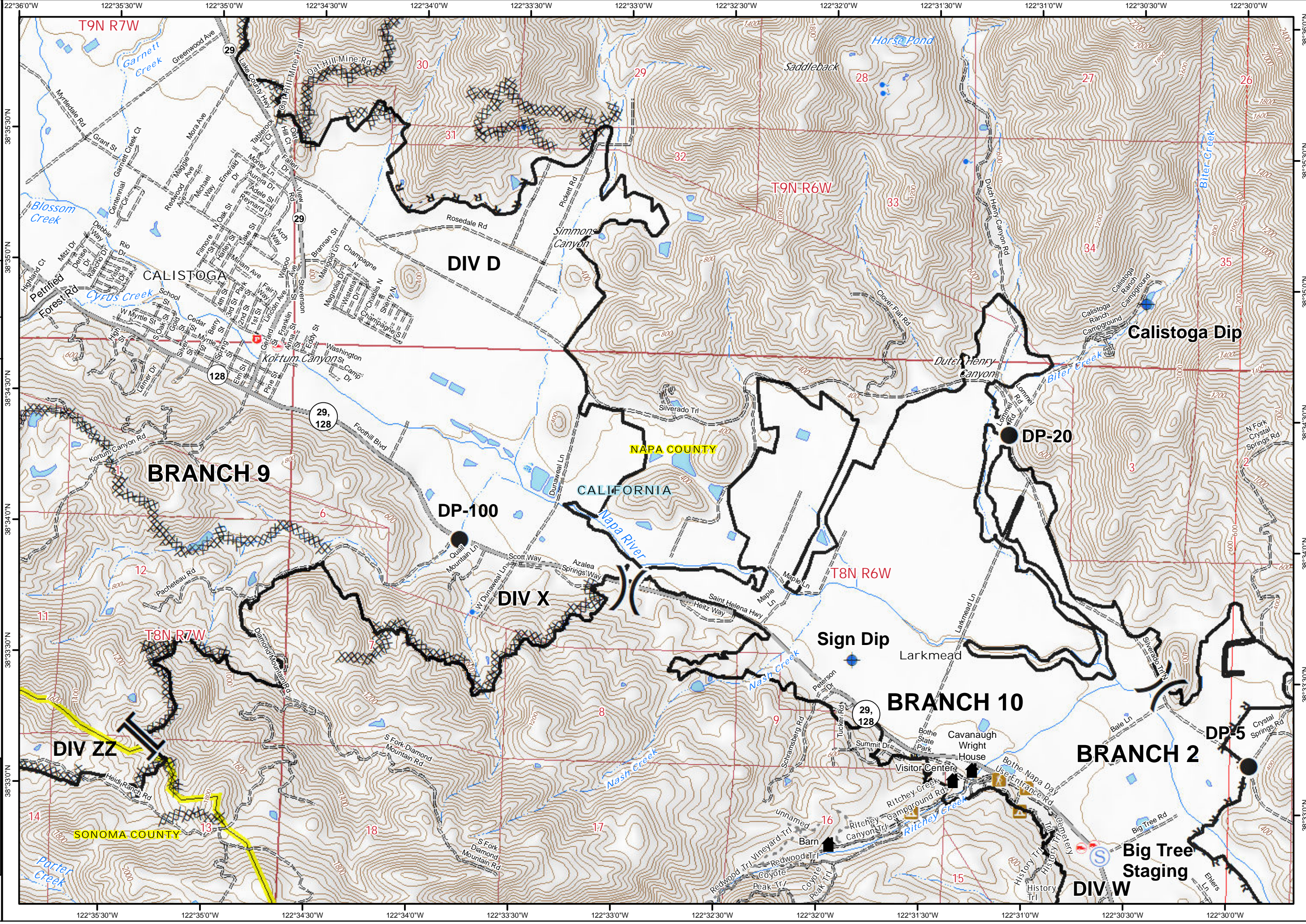
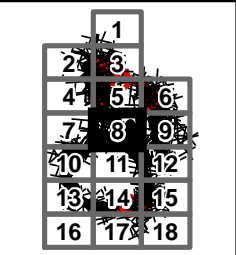
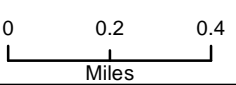
DIV ZZ



Glass Incident
CA-LNU-015947
Oct 7, 2020
0700 - 0700

IAP Map
Page 8

- Dip Site
- Drop Point
- Staging Area
- Division Break
- Branch Break
- Historic Building
- Contained Line
- Completed Dozer Line
- Completed Hand Line
- Road as Completed Line

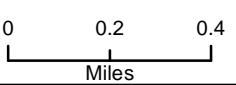




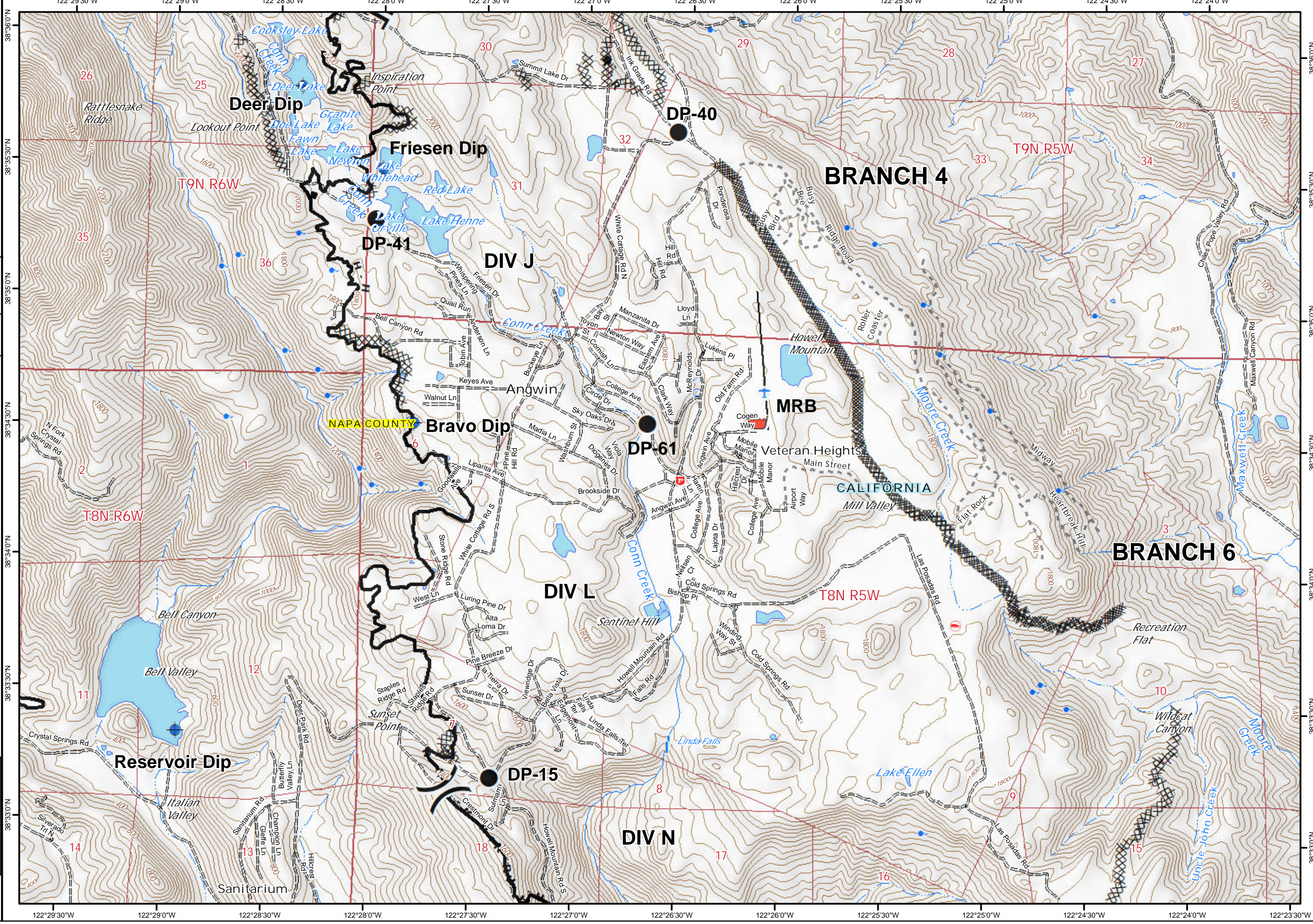
Glass Incident
CA-LNU-015947
Oct 7, 2020
0700 - 0700

IAP Map
Page 9

- Dip Site
- Drop Point
- Retardant/Mud Pit
- Division Break
- Branch Break
- Contained Line
- Completed Dozer Line
- Completed Hand Line
- Road as Completed Line



1		
2	3	
4	5	6
7	8	9
10	11	12
13	14	15
16	17	18

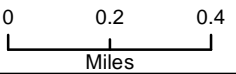




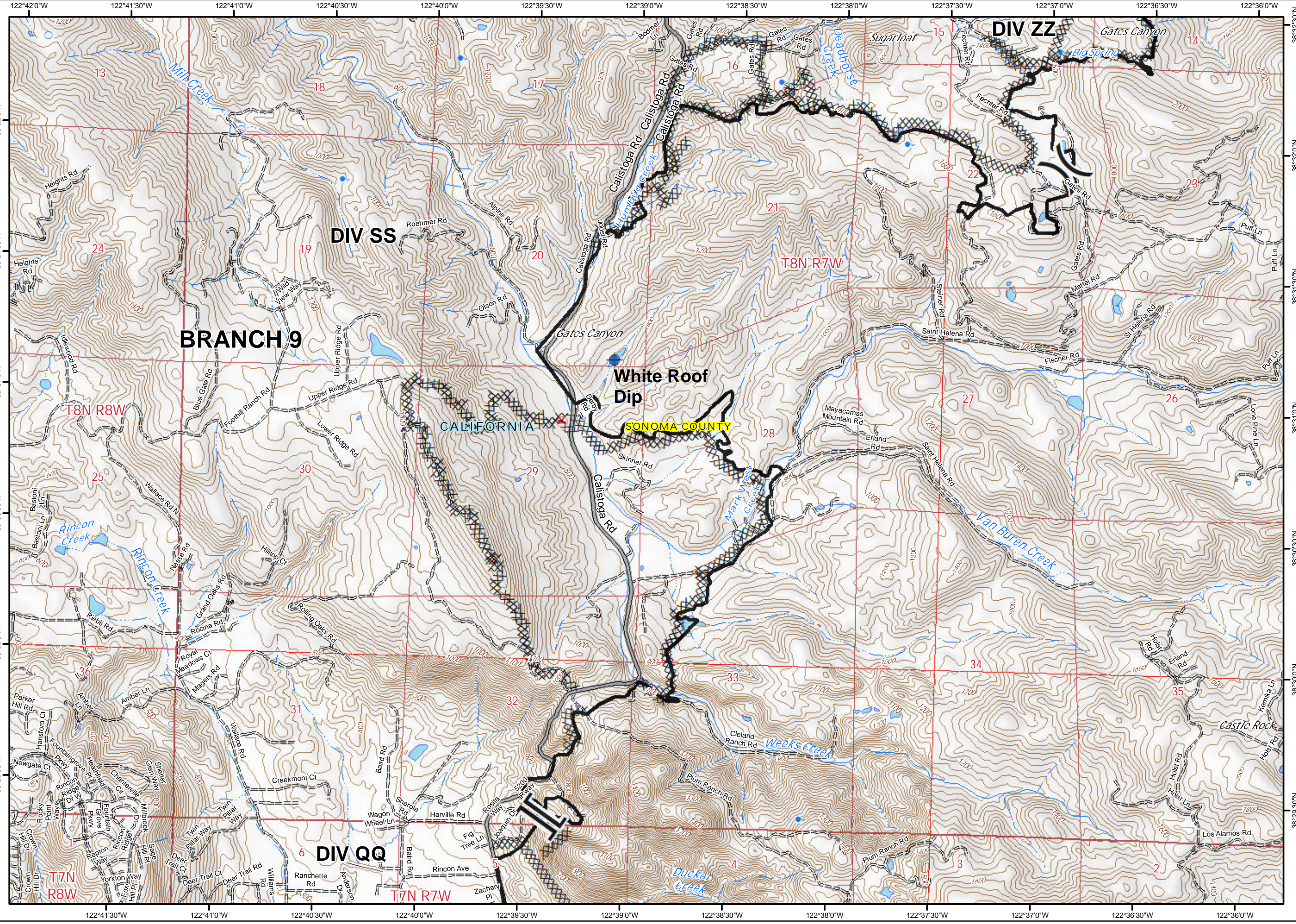
Glass Incident
CA-LNU-015947
Oct 7, 2020
0700 - 0700

IAP Map
Page 10

- Dip Site
- Division Break
- Branch Break
- Contained Line
- Completed Dozer Line



1		
2	3	
4	5	6
7	8	9
10	11	12
13	14	15
16	17	18



BRANCH 9

DIV SS

DIV ZZ

White Roof Dip

CALIFORNIA SONOMA COUNTY

DIV QQ

T7N R8W

T8N R7W

T8N R8W

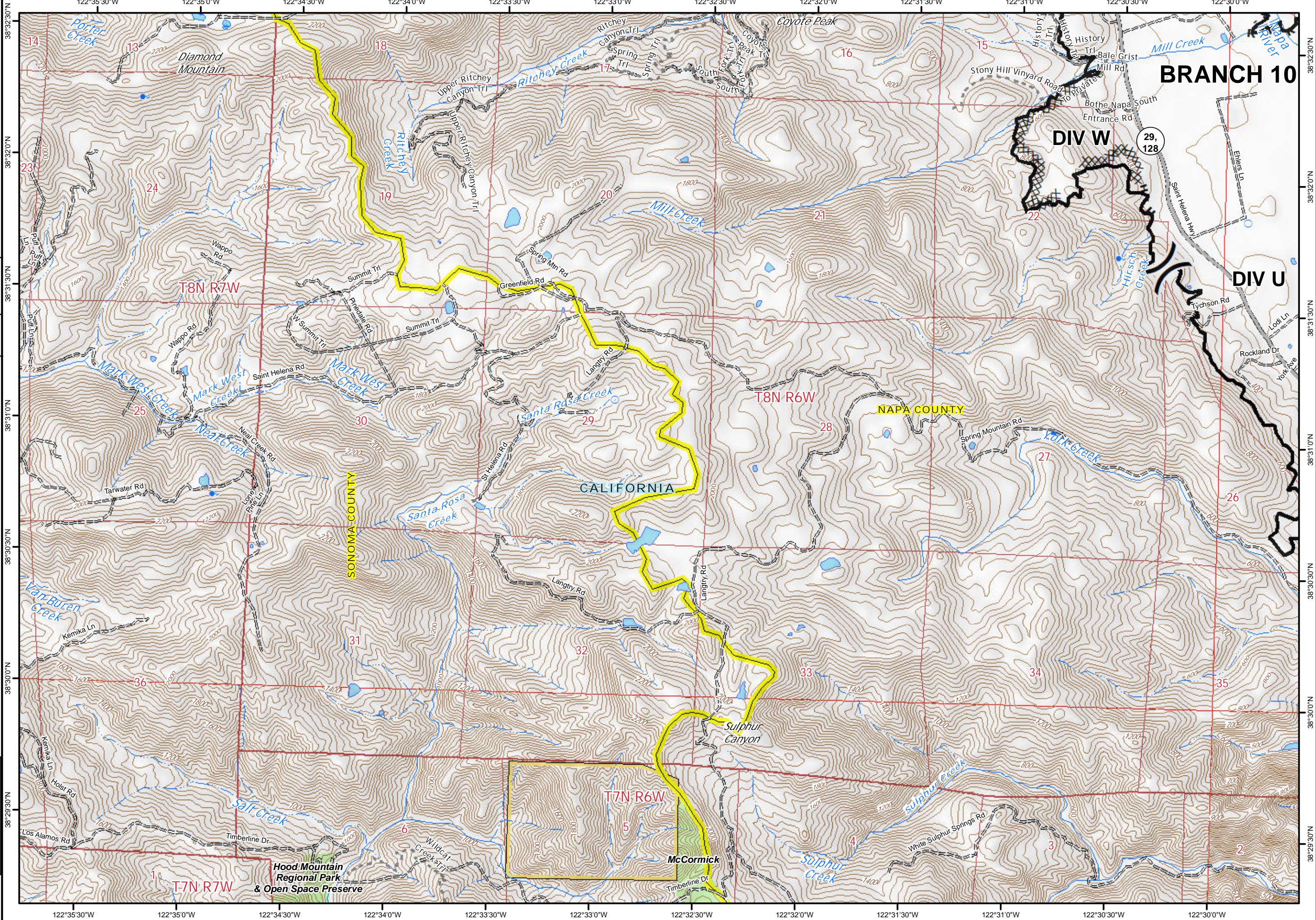
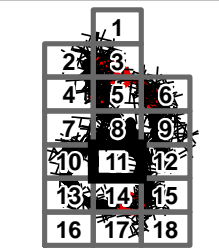
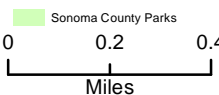
T7N R7W



Glass Incident
CA-LNU-015947
Oct 7, 2020
0700 - 0700

IAP Map
Page 11

- () Division Break
- ▬ Contained Line
- XXXX Completed Dozer Line
- H - Completed Hand Line
- R - Road as Completed Line
- Sonoma County Parks

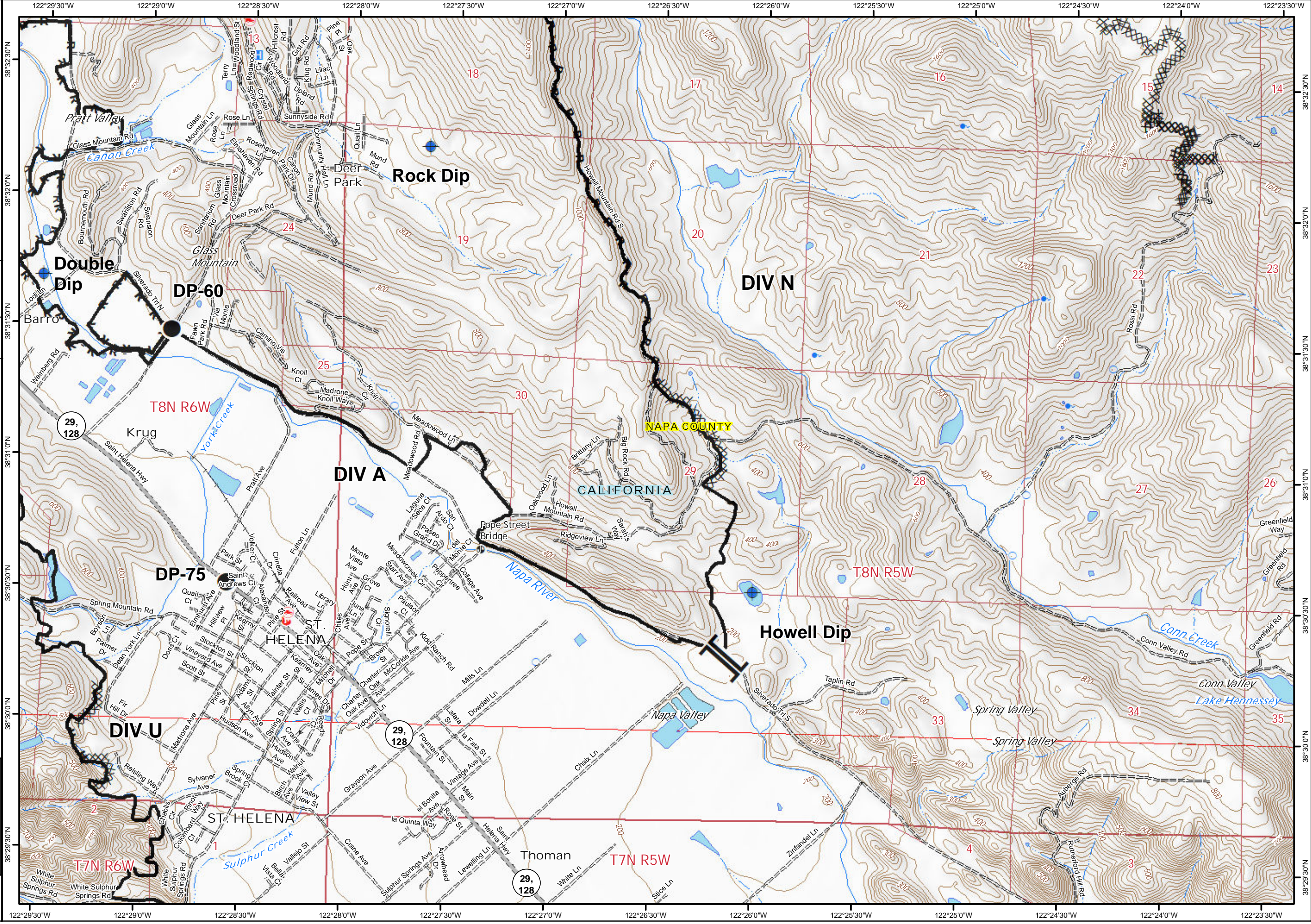
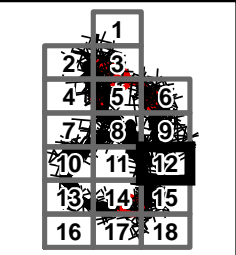
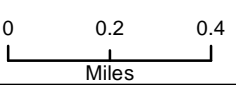




Glass Incident
CA-LNU-015947
Oct 7, 2020
0700 - 0700

IAP Map
Page 12

- Dip Site
- Drop Point
- Branch Break
- Contained Line
- Completed Dozer Line
- Completed Hand Line
- Road as Completed Line





Glass Incident
CA-LNU-015947
Oct 7, 2020
0700 - 0700

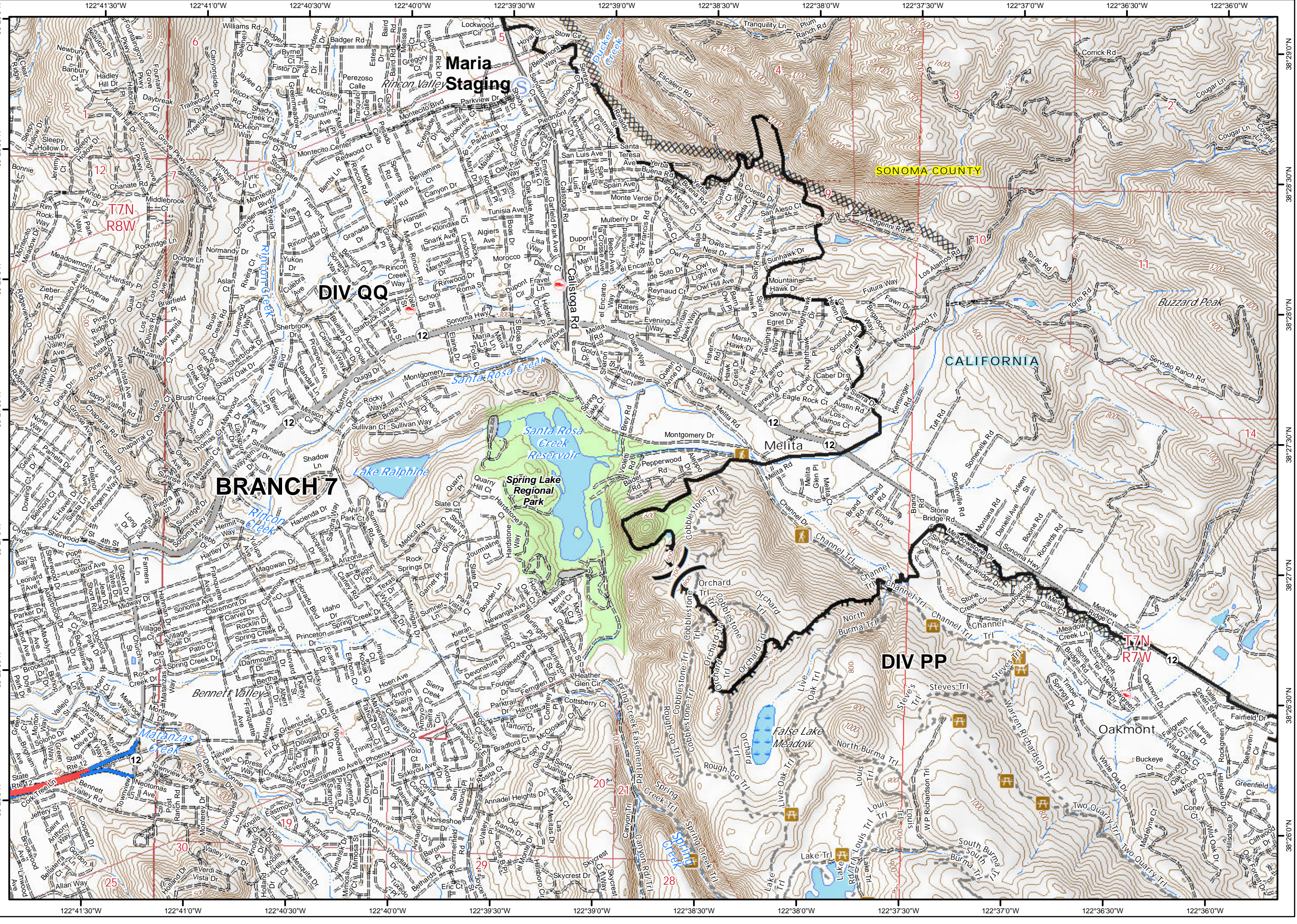
IAP Map
Page 13

S Staging Area
() Division Break
--- Contained Line
XXXX Completed Dozer Line
H Completed Hand Line

0 0.2 0.4
Miles

1	2	3
4	5	6
7	8	9
10	11	12
13	14	15
16	17	18

Paul





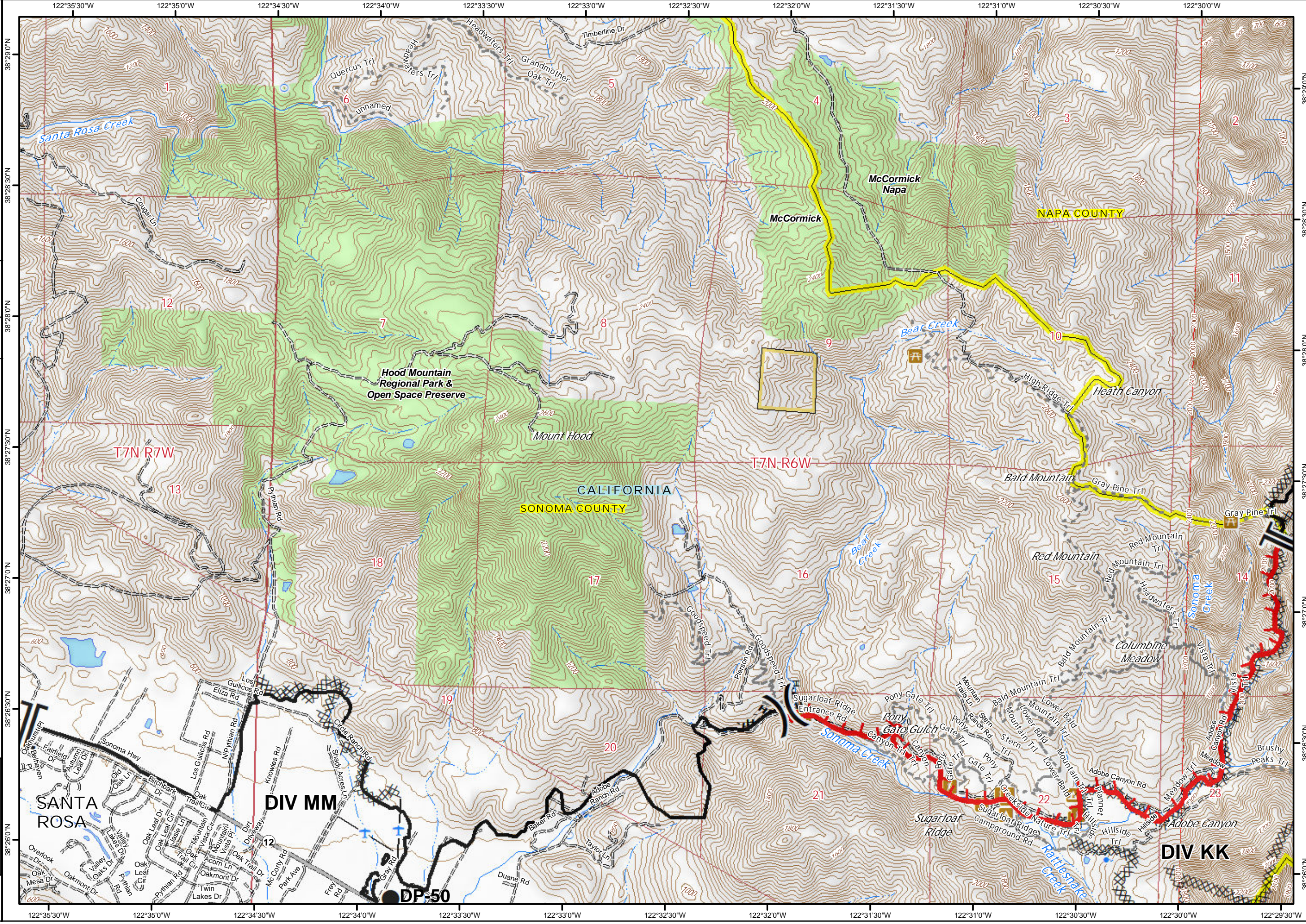
Glass Incident
CA-LNU-015947
Oct 7, 2020
0700 - 0700

IAP Map
Page 14

- Drop Point
-) Division Break
- || Branch Break
- ▬ Uncontrolled Fire Edge
- ▬ Contained Line
- XXXX Completed Dozer Line
- H - Completed Hand Line
- Sonoma County Parks

0 0.2 0.4 Miles

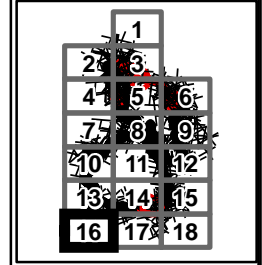
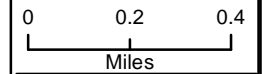
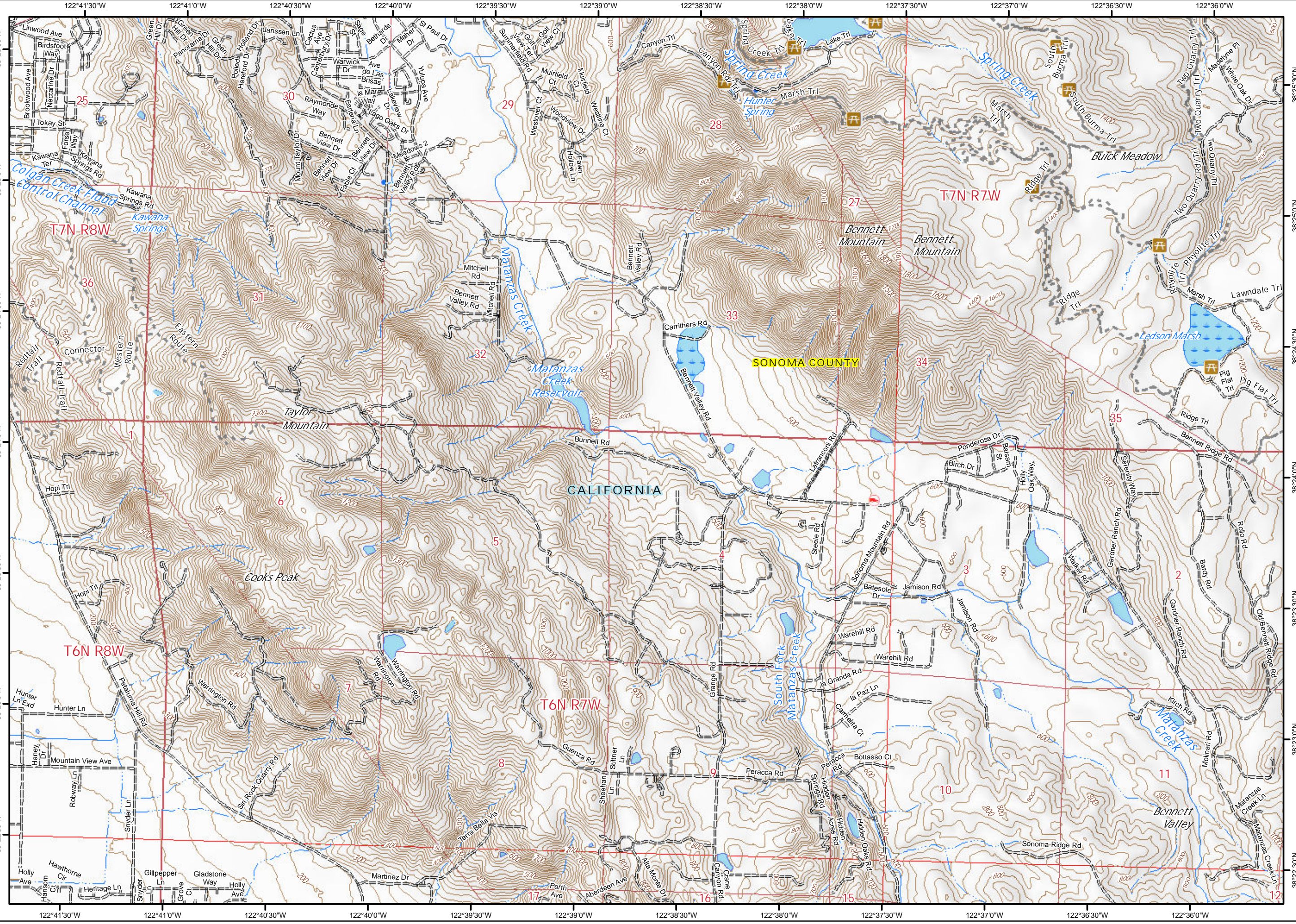
1		
2	3	
4	5	6
7	8	9
10	11	12
13	14	15
16	17	18





Glass Incident
CA-LNU-015947
Oct 7, 2020
0700 - 0700

IAP Map
Page 16





Glass Incident
CA-LNU-015947
Oct 7, 2020
0700 - 0700

IAP Map
Page 17

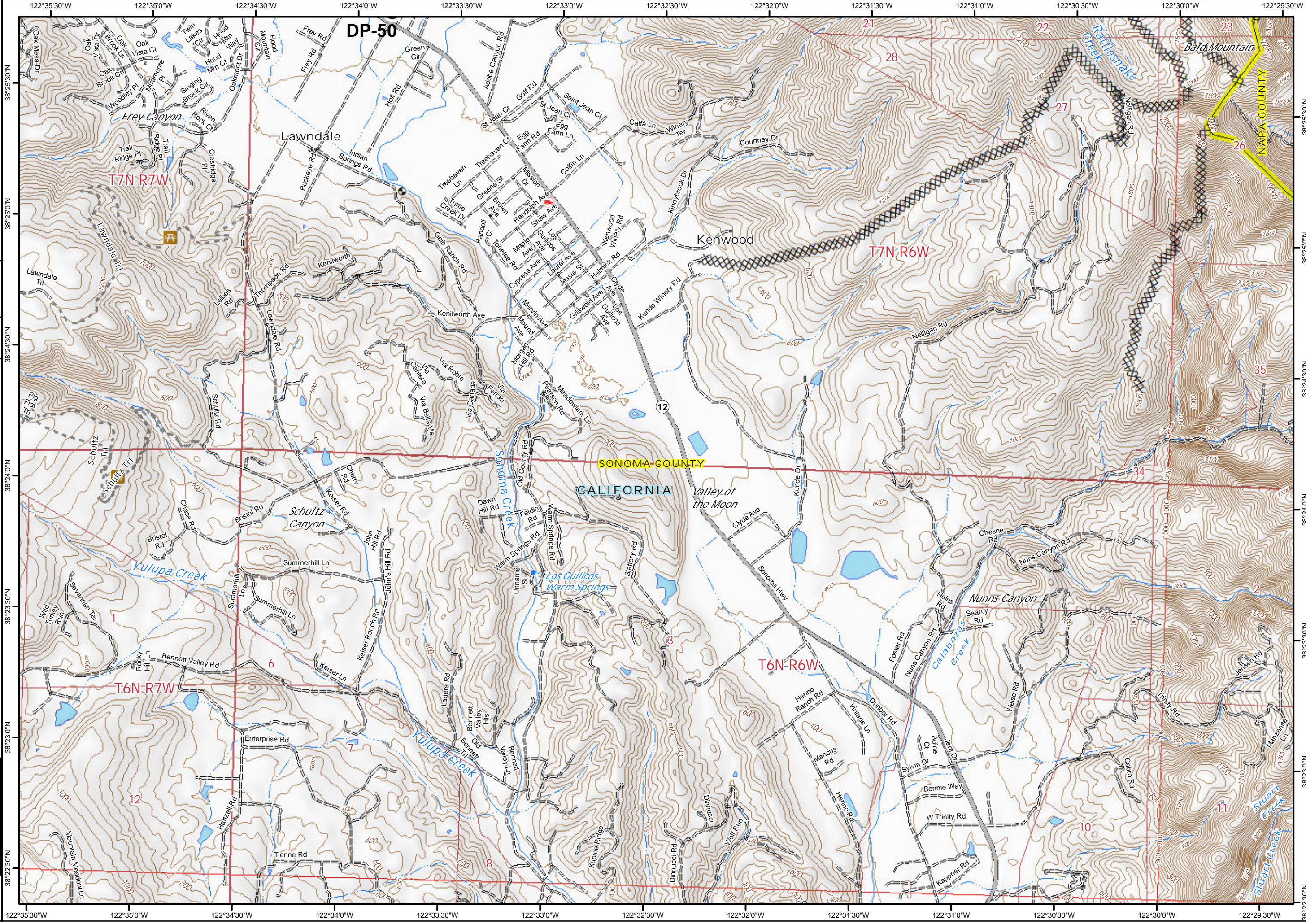
● Drop Point

XXXXX Completed Dozer Line

0 0.2 0.4
Miles

1
2 3
4 5 6
7 8 9
10 11 12
13 14 15
16 17 18

Paul





Glass Incident
CA-LNU-015947
Oct 7, 2020
0700 - 0700

IAP Map
Page 18

