

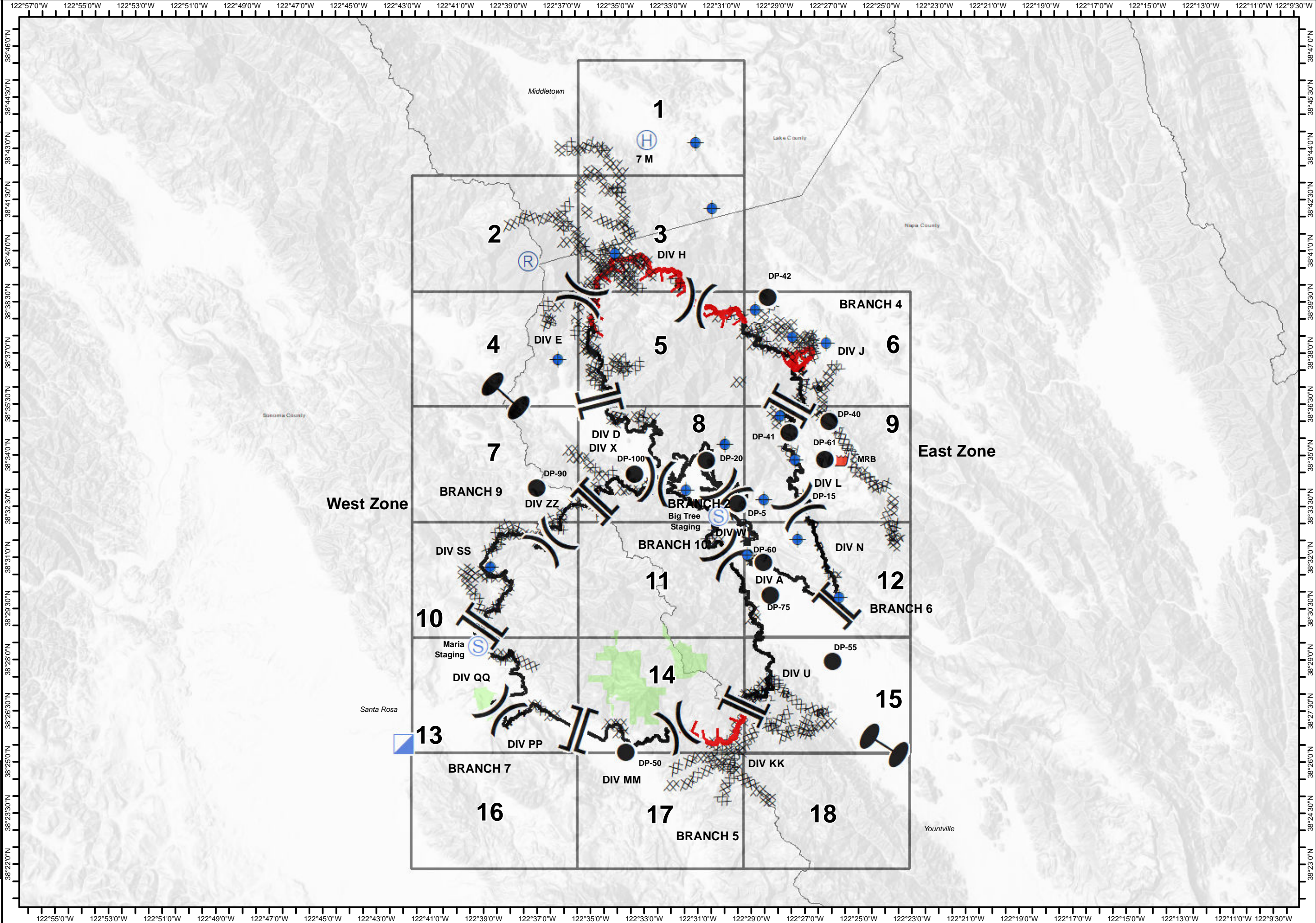
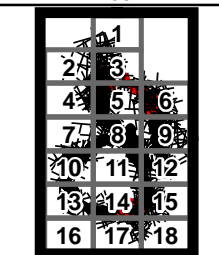


Glass Incident
CA-LNU-015947
Oct 8, 2020
0700 - 0700

IAP Map
Page 0

- Dip Site
- Drop Point
- Helibase
- Incident Command Post
- Repeater
- Retardant/Mud Pit
- Staging Area
- Zone Break
- Division Break
- Branch Break
- Uncontrolled Fire Edge
- Contained Line
- Completed Dozer Line
- Completed Hand Line
- Road as Completed Line
- County Boundary
- Sonoma County Parks

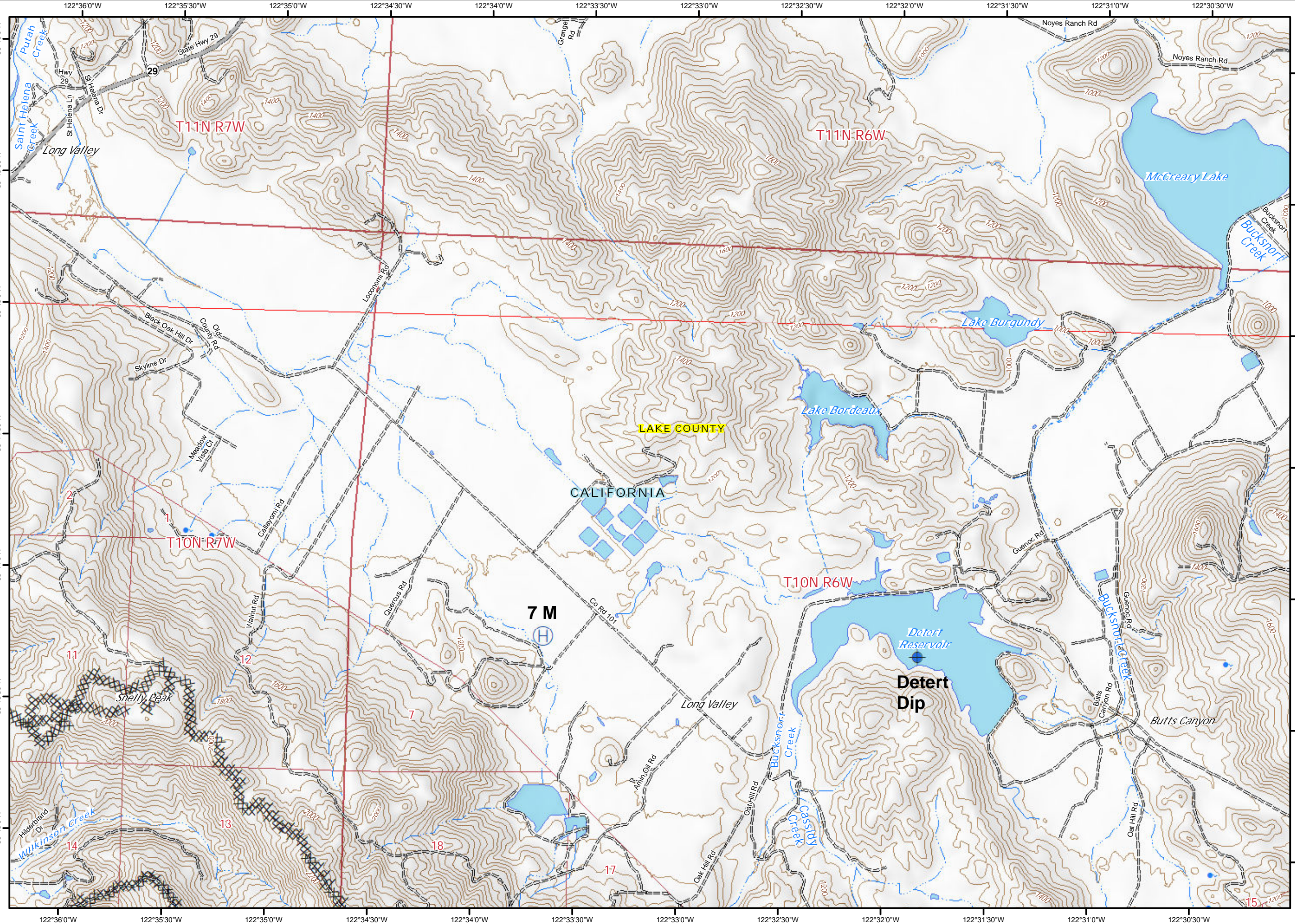
0 1.5 3
Miles



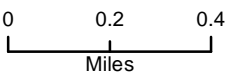


Glass Incident
CA-LNU-015947
Oct 8, 2020
0700 - 0700

IAP Map
Page 1



- Dip Site
- Helibase
- Completed Dozer Line



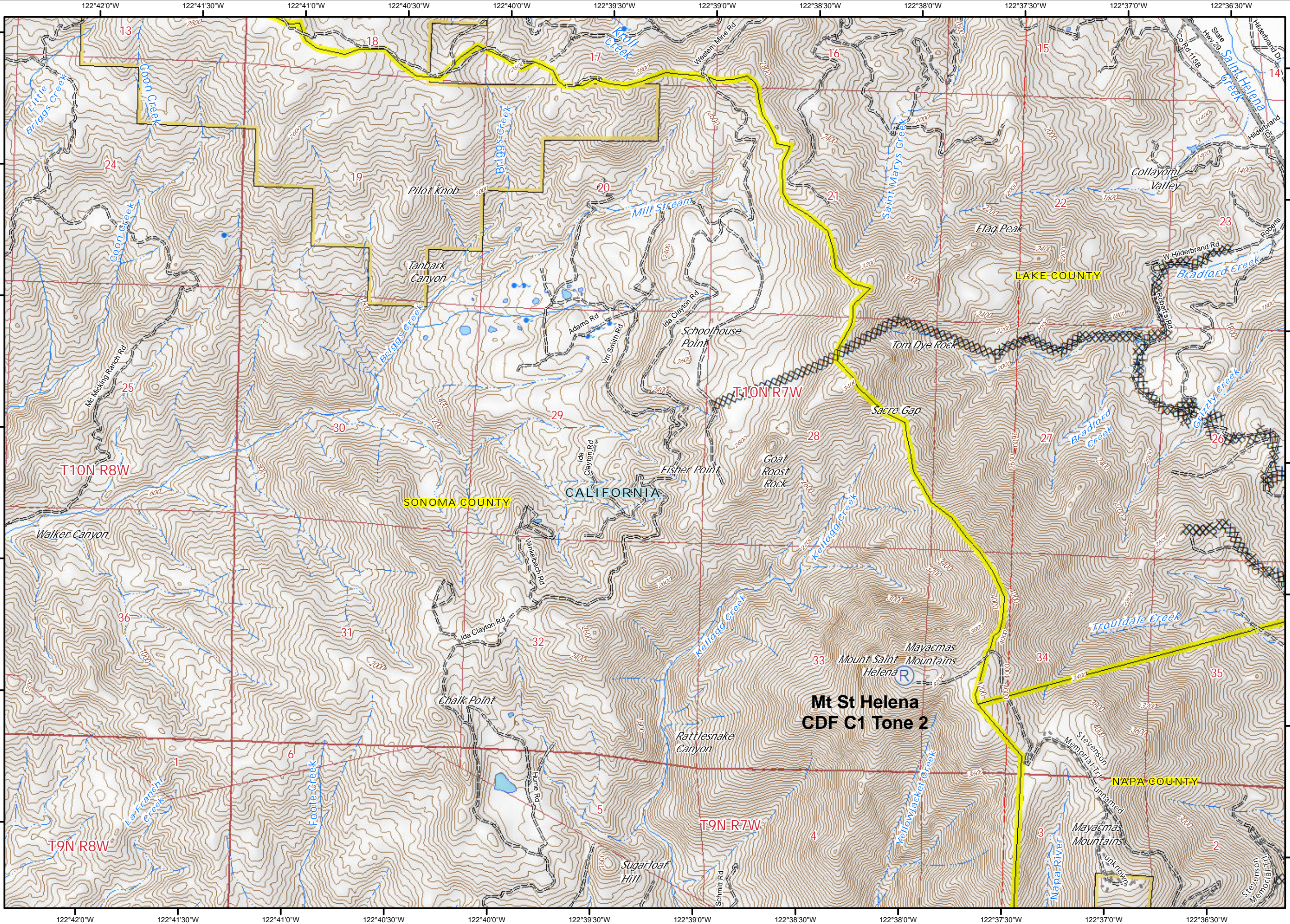
| | | |
|----|----|----|
| 1 | | |
| 2 | 3 | |
| 4 | 5 | 6 |
| 7 | 8 | 9 |
| 10 | 11 | 12 |
| 13 | 14 | 15 |
| 16 | 17 | 18 |





Glass Incident
CA-LNU-015947
Oct 8, 2020
0700 - 0700

IAP Map
Page 2



Ⓡ Repeater
XXXX Completed Dozer Line

0 0.2 0.4
Miles

| | | | |
|----|----|----|----|
| 1 | 2 | 3 | 4 |
| 5 | 6 | 7 | 8 |
| 9 | 10 | 11 | 12 |
| 13 | 14 | 15 | 16 |
| 17 | 18 | 19 | 20 |





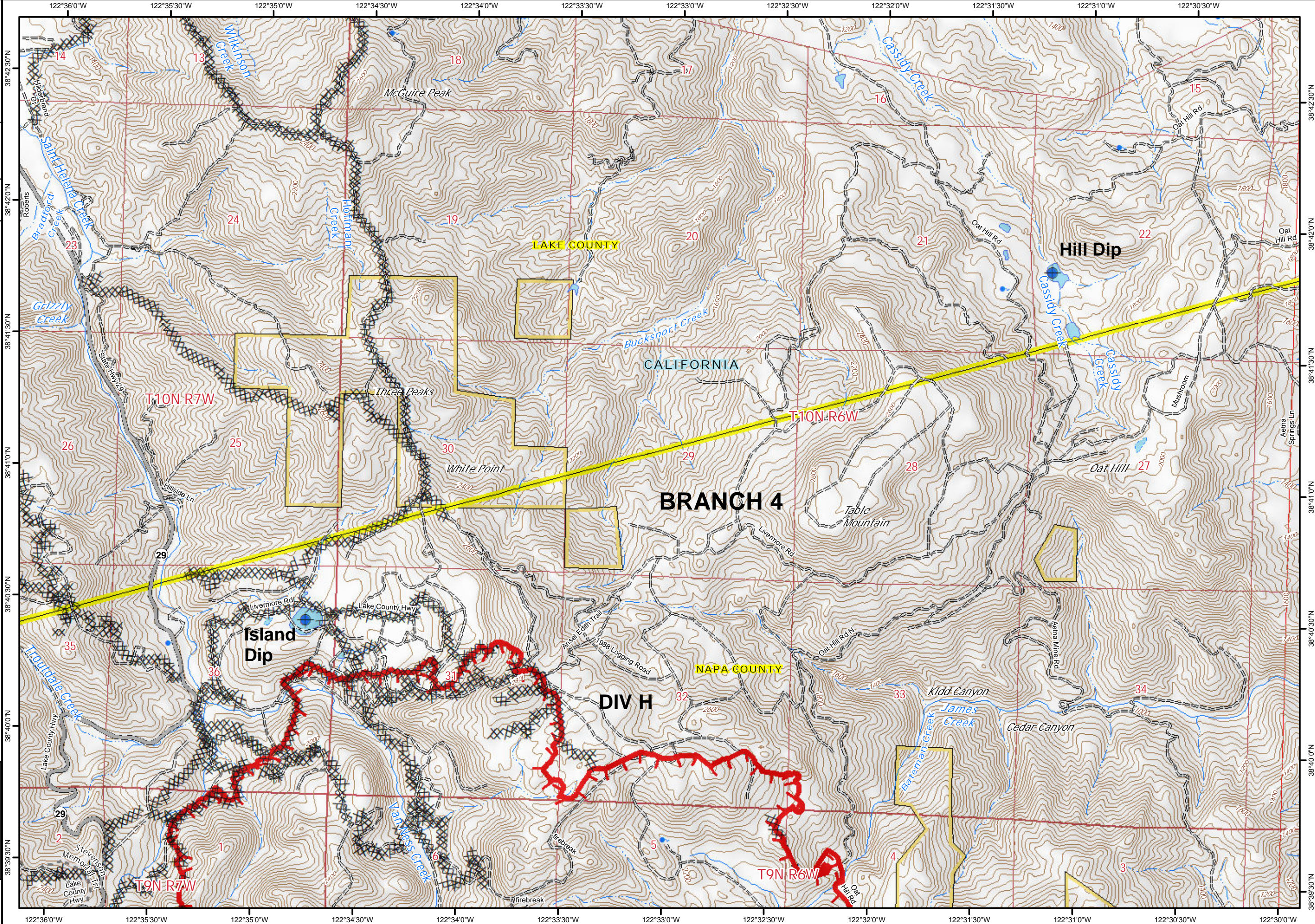
Glass Incident
CA-LNU-015947
Oct 8, 2020
0700 - 0700

IAP Map
Page 3

- Dip Site
- Uncontrolled Fire Edge
- Completed Dozer Line
- Completed Hand Line

0 0.2 0.4
Miles

| | | | |
|----|----|----|----|
| 1 | 2 | 3 | 4 |
| 5 | 6 | 7 | 8 |
| 9 | 10 | 11 | 12 |
| 13 | 14 | 15 | 16 |
| 17 | 18 | 19 | 20 |





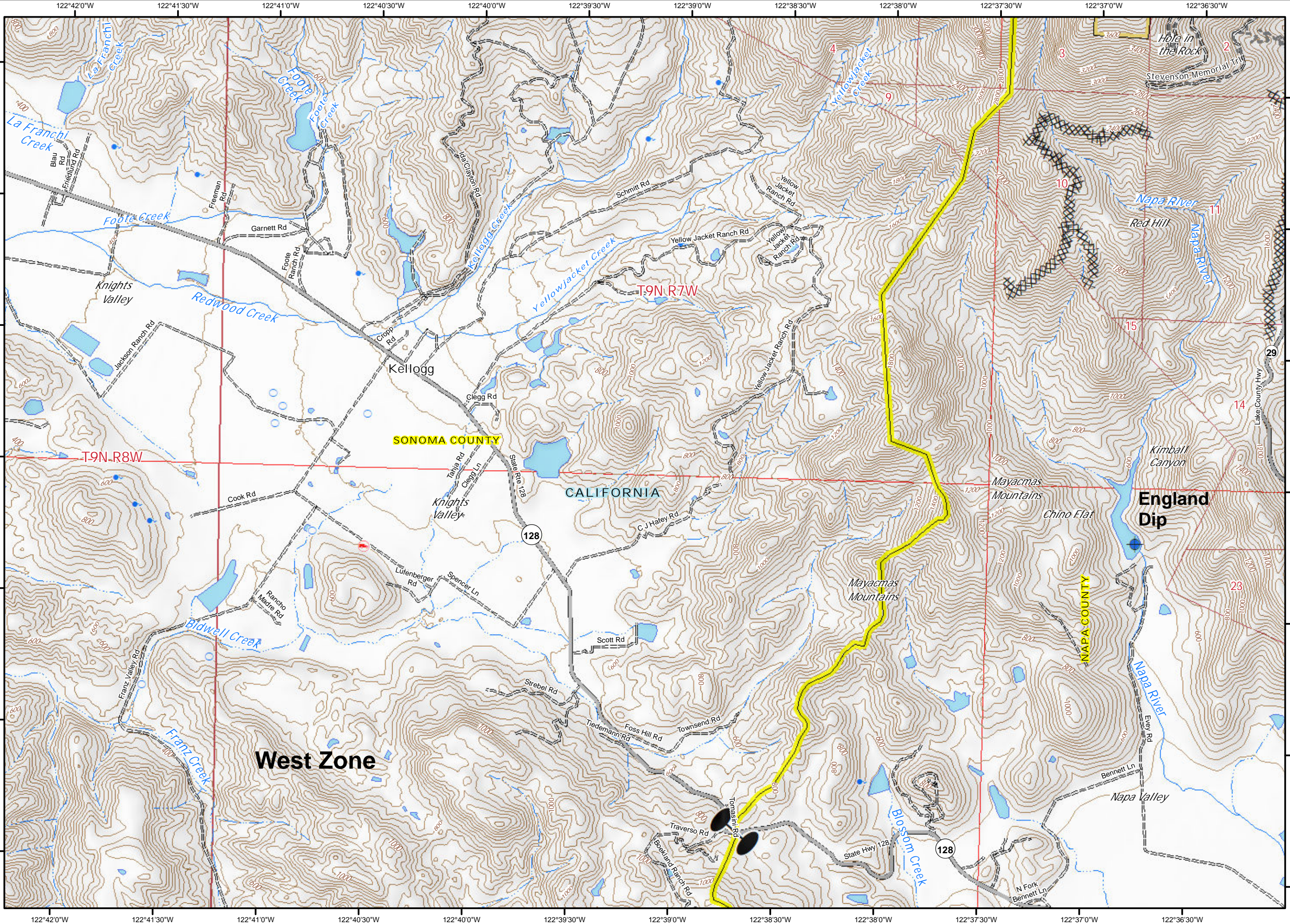
Glass Incident
CA-LNU-015947
Oct 8, 2020
0700 - 0700

IAP Map
Page 4

- Dip Site
- Zone Break
- Completed Dozer Line

0 0.2 0.4
Miles

| | | | |
|----|----|----|----|
| 1 | 2 | 3 | 4 |
| 5 | 6 | 7 | 8 |
| 9 | 10 | 11 | 12 |
| 13 | 14 | 15 | 16 |
| 17 | 18 | 19 | 20 |



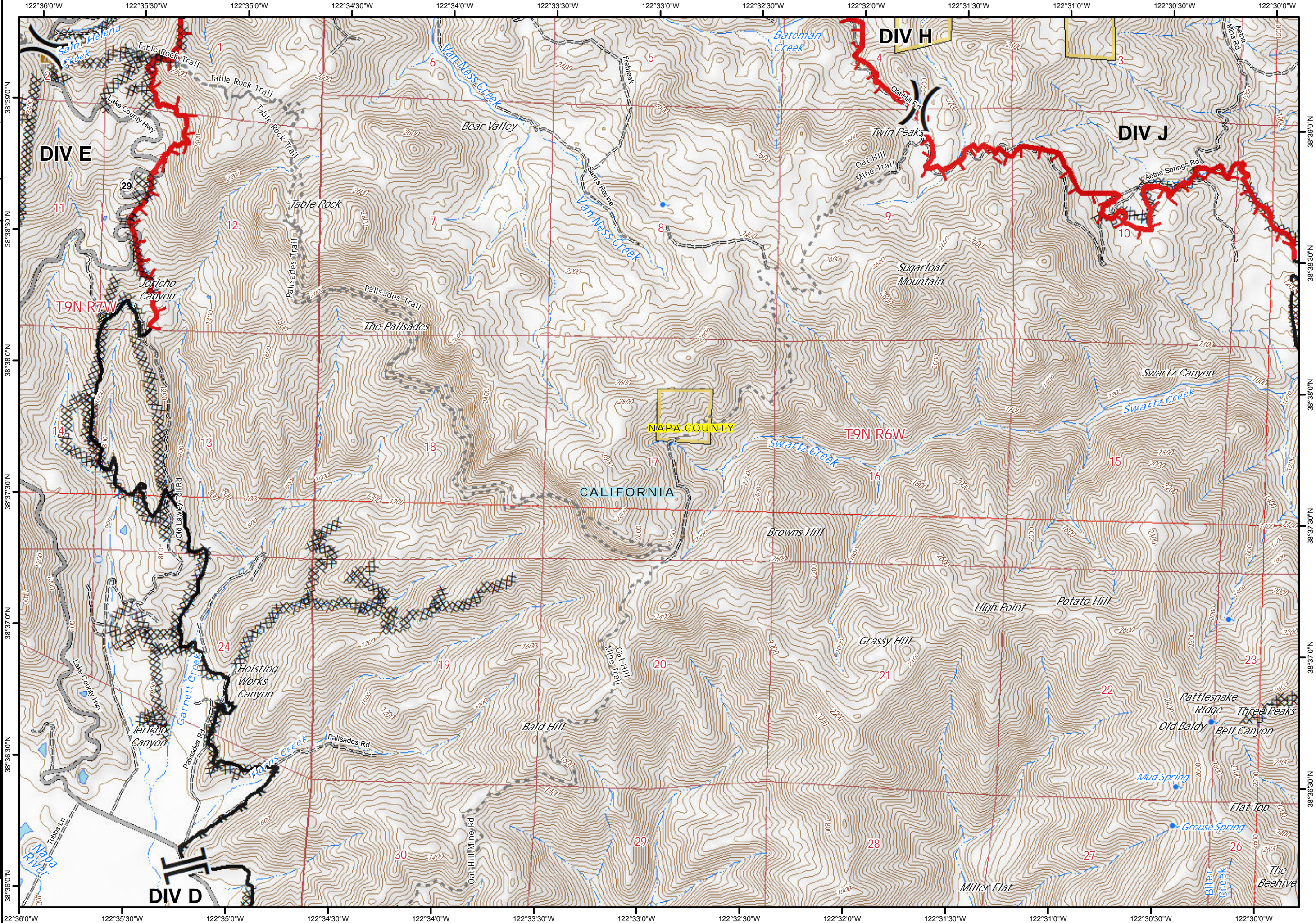
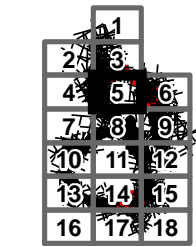


Glass Incident
CA-LNU-015947
Oct 8, 2020
0700 - 0700

IAP Map
Page 5

- () Division Break
- [] Branch Break
- Uncontrolled Fire Edge
- Contained Line
- XXXX Completed Dozer Line
- H - Completed Hand Line
- R - Road as Completed Line

0 0.2 0.4
Miles



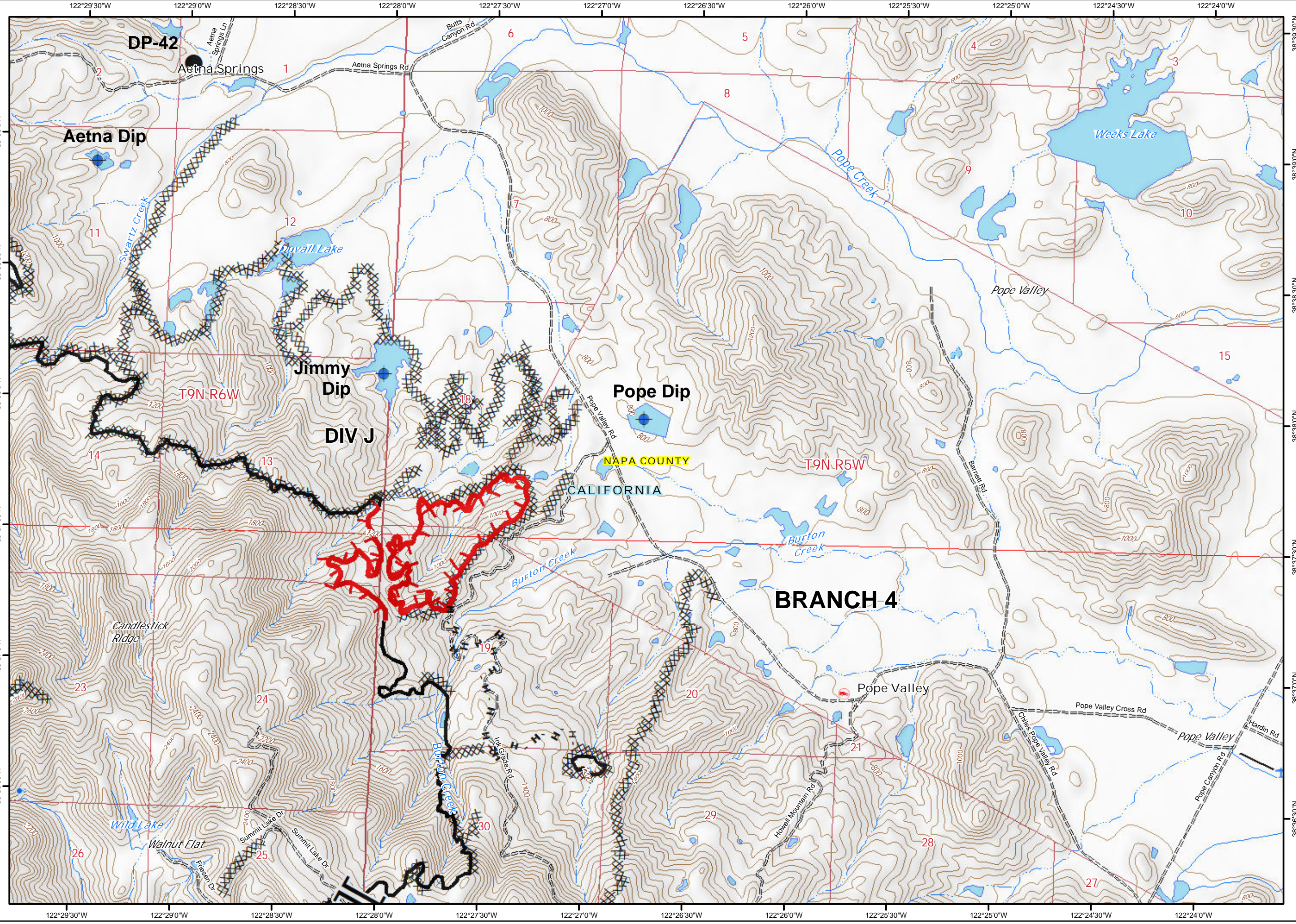
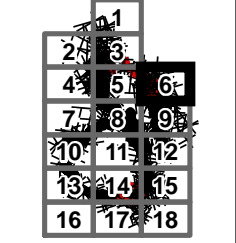


Glass Incident
CA-LNU-015947
Oct 8, 2020
0700 - 0700

IAP Map
Page 6

- Dip Site
- Drop Point
- Branch Break
- Uncontrolled Fire Edge
- Contained Line
- Completed Dozer Line
- Completed Hand Line
- Road as Completed Line

0 0.2 0.4
Miles



122°29'30"W 122°29'0"W 122°28'30"W 122°28'0"W 122°27'30"W 122°27'0"W 122°26'30"W 122°26'0"W 122°25'30"W 122°25'0"W 122°24'30"W 122°24'0"W

38°39'30"N 38°39'0"N 38°38'30"N 38°38'0"N 38°37'30"N 38°37'0"N 38°36'30"N 38°36'0"N

DP-42
Aetna Springs
Aetna Springs Ln
Butts Canyon Rd
Aetna Springs Rd

Aetna Dip

Swartz Creek
Duvall Lake
Jimmy Dip
Pope Dip
Pope Valley
Burton Creek
Burton Creek
Pope Valley
Pope Valley
Pope Valley

T9N R6W
T9N R5W

DIV J
NAPA COUNTY
CALIFORNIA
BRANCH 4

Candlestick Ridge
Wild Lake
Walnut Flat
Summit Lake Dr
Summit Lake Dr
Eliason Dr
Ink Spade Rd
Howell Mountain Rd
Pope Valley Cross Rd
Chiles Pope Valley Rd
Pope Canyon Rd
Hardin Rd

1 2 3 4 5 6 7 8 9 10 11 12 13 14 15 16 17 18 19 20 21 22 23 24 25 26 27 28 29 30



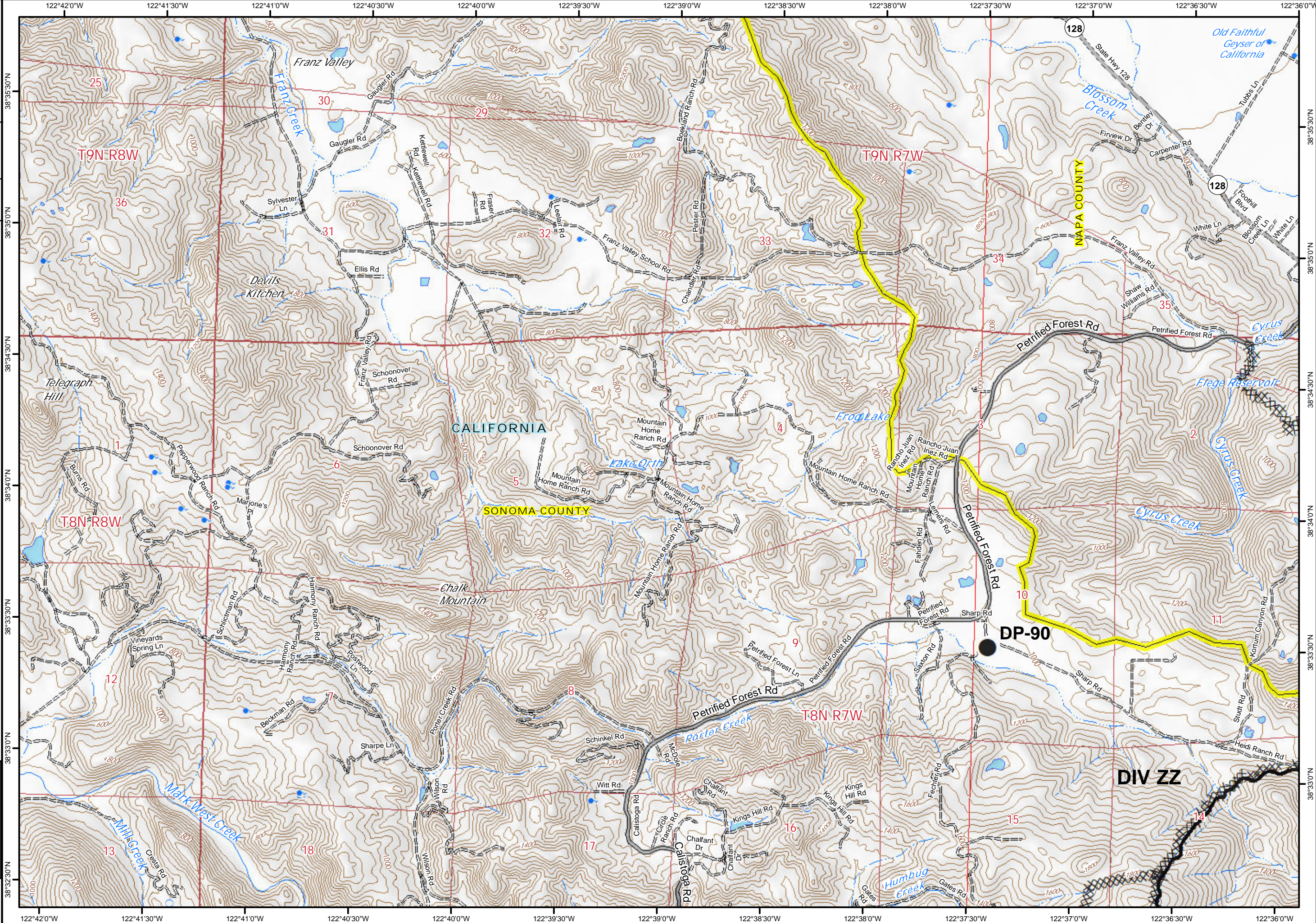
Glass Incident
CA-LNU-015947
Oct 8, 2020
0700 - 0700

IAP Map
Page 7

- Drop Point
- ▬ Contained Line
- ▨ Completed Dozer Line

0 0.2 0.4
Miles

| | | |
|----|----|----|
| 1 | 2 | 3 |
| 4 | 5 | 6 |
| 7 | 8 | 9 |
| 10 | 11 | 12 |
| 13 | 14 | 15 |
| 16 | 17 | 18 |



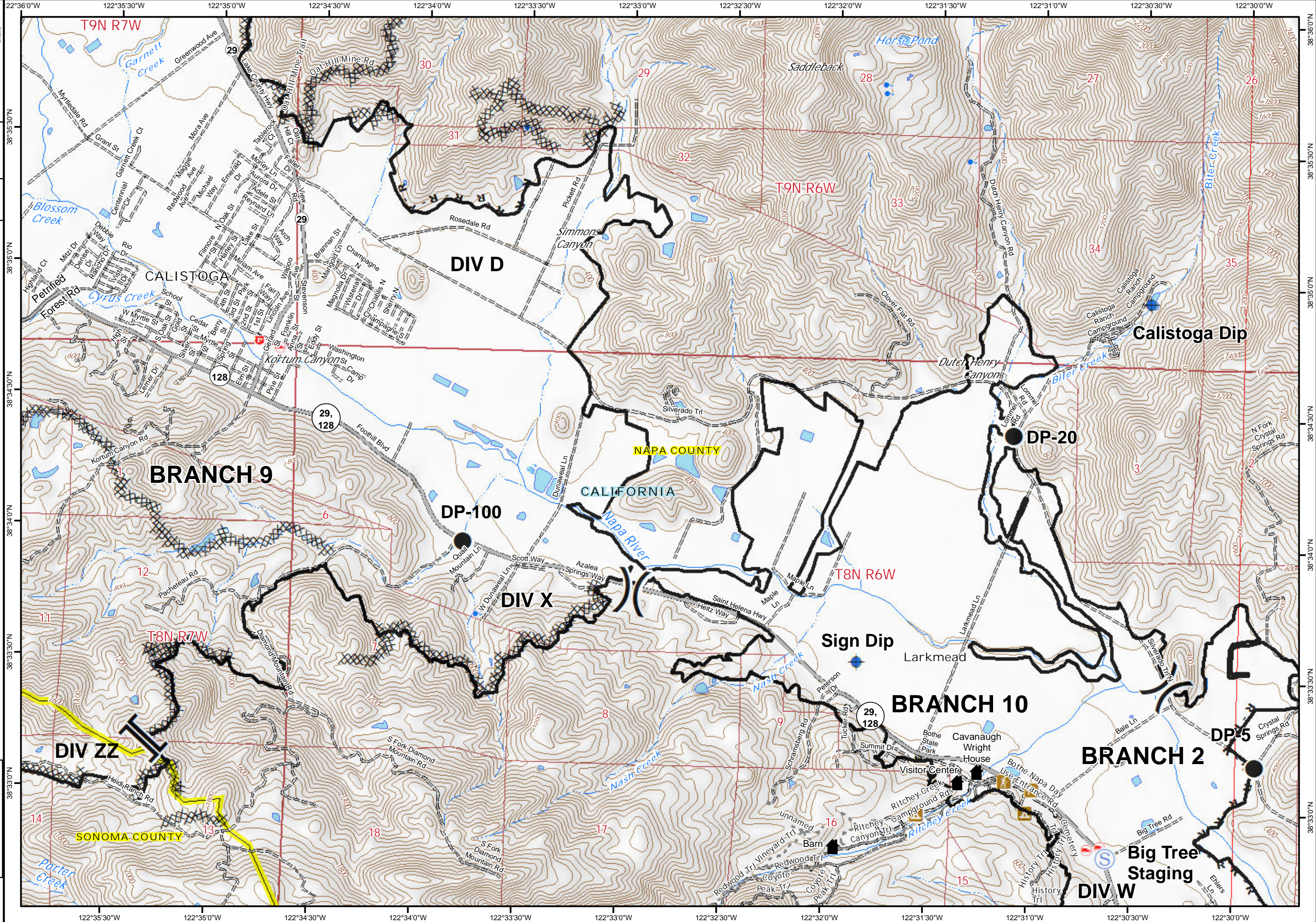
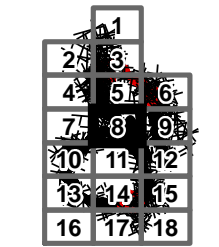


Glass Incident
CA-LNU-015947
Oct 8, 2020
0700 - 0700

IAP Map
Page 8

- Dip Site
- Drop Point
- Staging Area
- Division Break
- Branch Break
- Historic Building
- Contained Line
- Completed Dozer Line
- Completed Hand Line
- Road as Completed Line

0 0.2 0.4
Miles





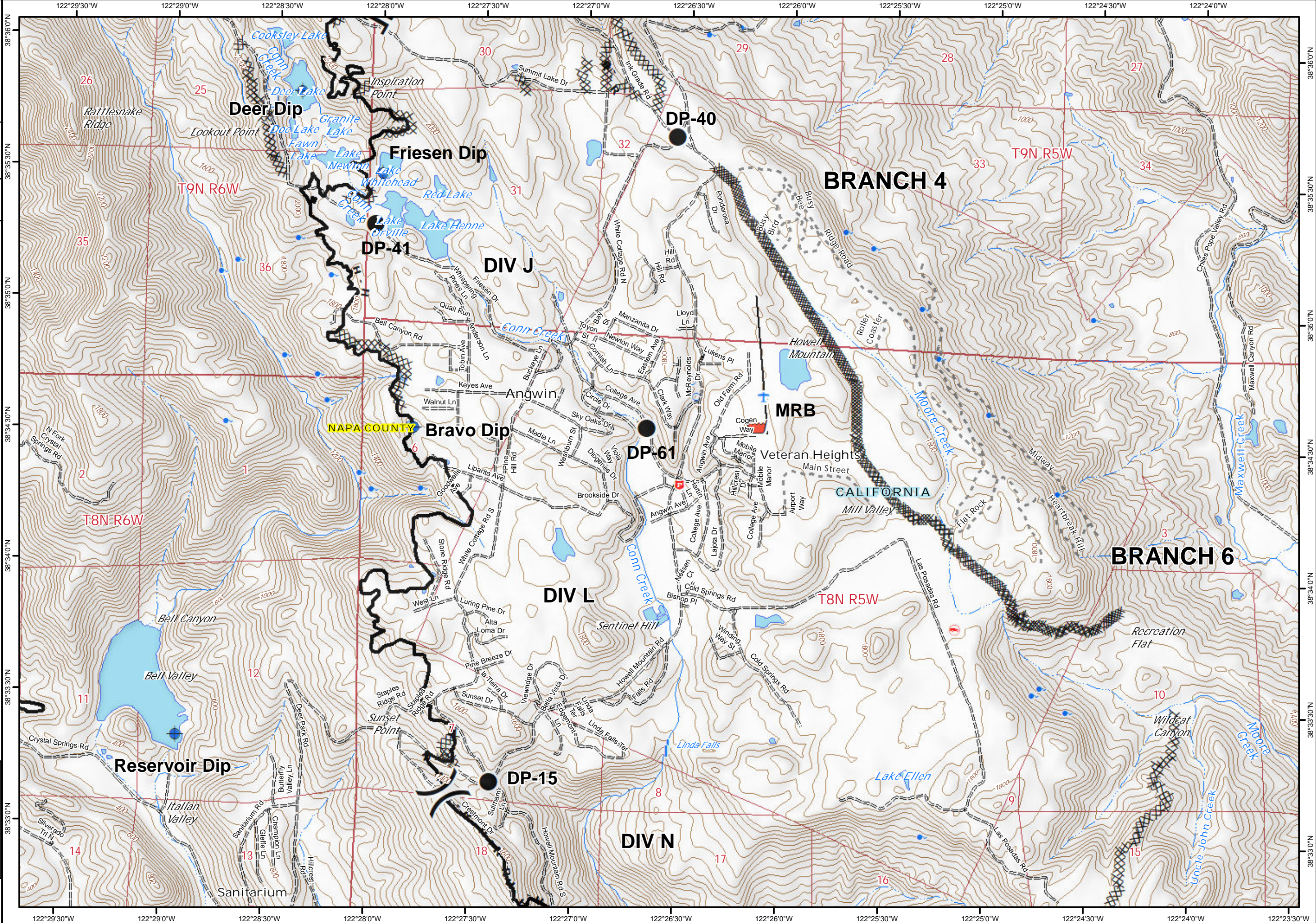
Glass Incident
CA-LNU-015947
Oct 8, 2020
0700 - 0700

IAP Map
Page 9

- Dip Site
- Drop Point
- Retardant/Mud Pit
- Division Break
- Branch Break
- Contained Line
- Completed Dozer Line
- Completed Hand Line
- Road as Completed Line

0 0.2 0.4
Miles

| | | | |
|----|----|----|----|
| 1 | 2 | 3 | 4 |
| 5 | 6 | 7 | 8 |
| 9 | 10 | 11 | 12 |
| 13 | 14 | 15 | 16 |
| 17 | 18 | 19 | 20 |





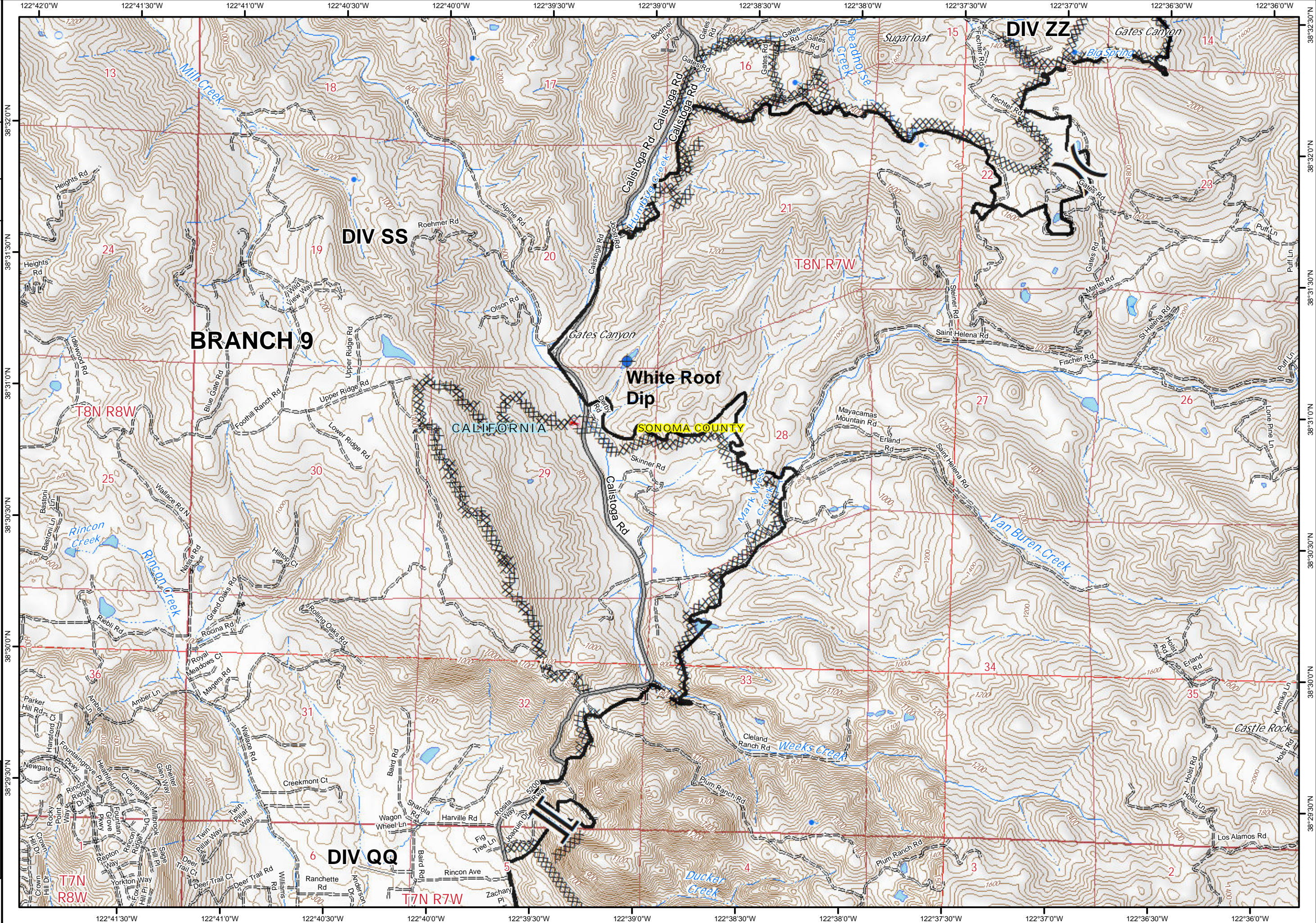
Glass Incident
CA-LNU-015947
Oct 8, 2020
0700 - 0700

IAP Map
Page 10

- Dip Site
- Division Break
- Branch Break
- Contained Line
- Completed Dozer Line

0 0.2 0.4
Miles

| | | | |
|----|----|----|----|
| 1 | 2 | 3 | 4 |
| 5 | 6 | 7 | 8 |
| 9 | 10 | 11 | 12 |
| 13 | 14 | 15 | 16 |
| 17 | 18 | 19 | 20 |



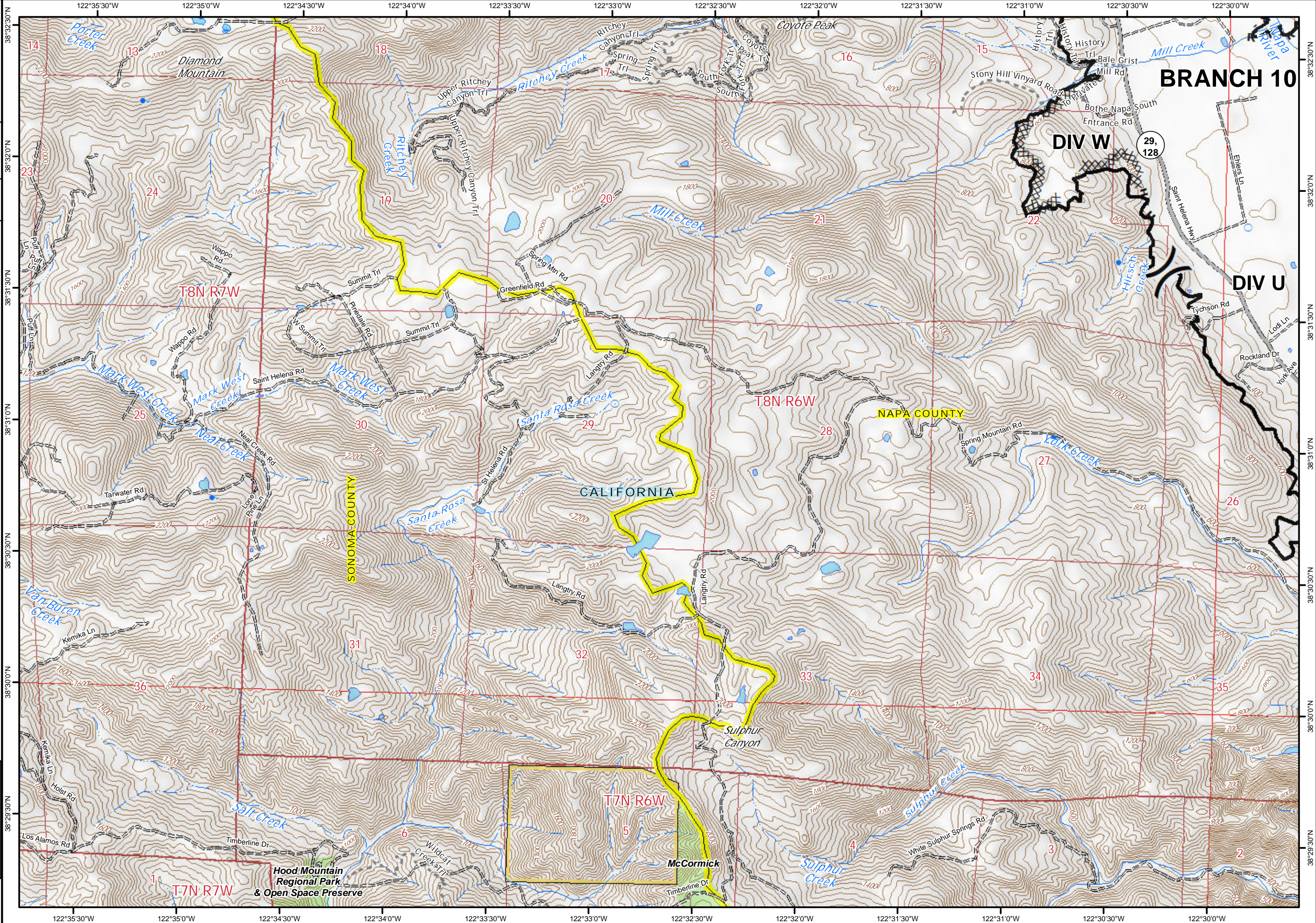
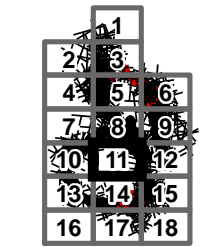


Glass Incident
CA-LNU-015947
Oct 8, 2020
0700 - 0700

IAP Map
Page 11

- Division Break
- Contained Line
- Completed Dozer Line
- Completed Hand Line
- Road as Completed Line
- Sonoma County Parks

0 0.2 0.4
Miles



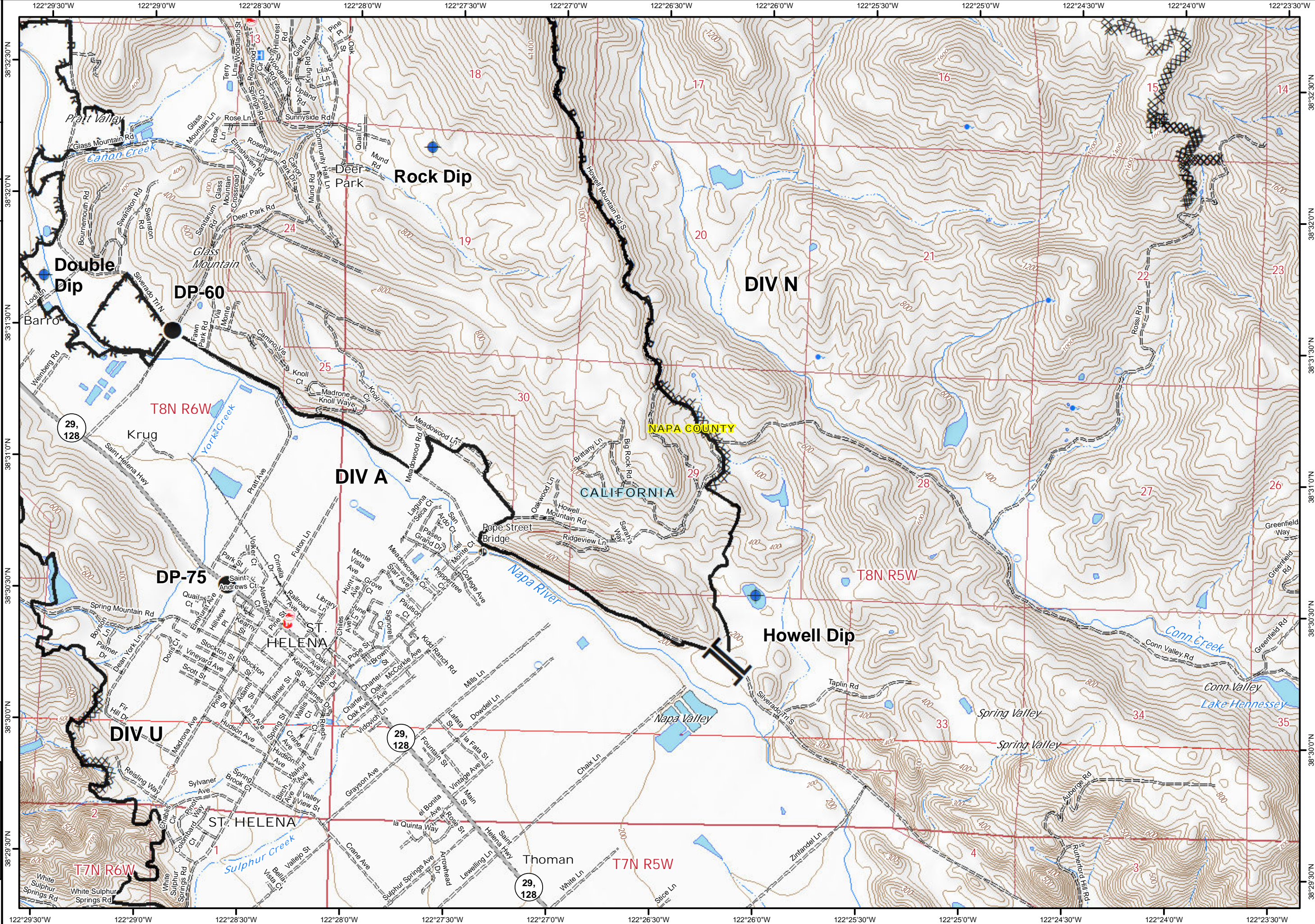
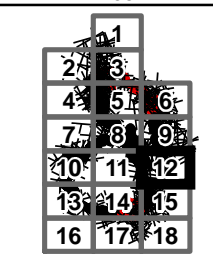


Glass Incident
CA-LNU-015947
Oct 8, 2020
0700 - 0700

IAP Map
Page 12

- Dip Site
- Drop Point
- Branch Break
- Contained Line
- Completed Dozer Line
- Completed Hand Line
- Road as Completed Line

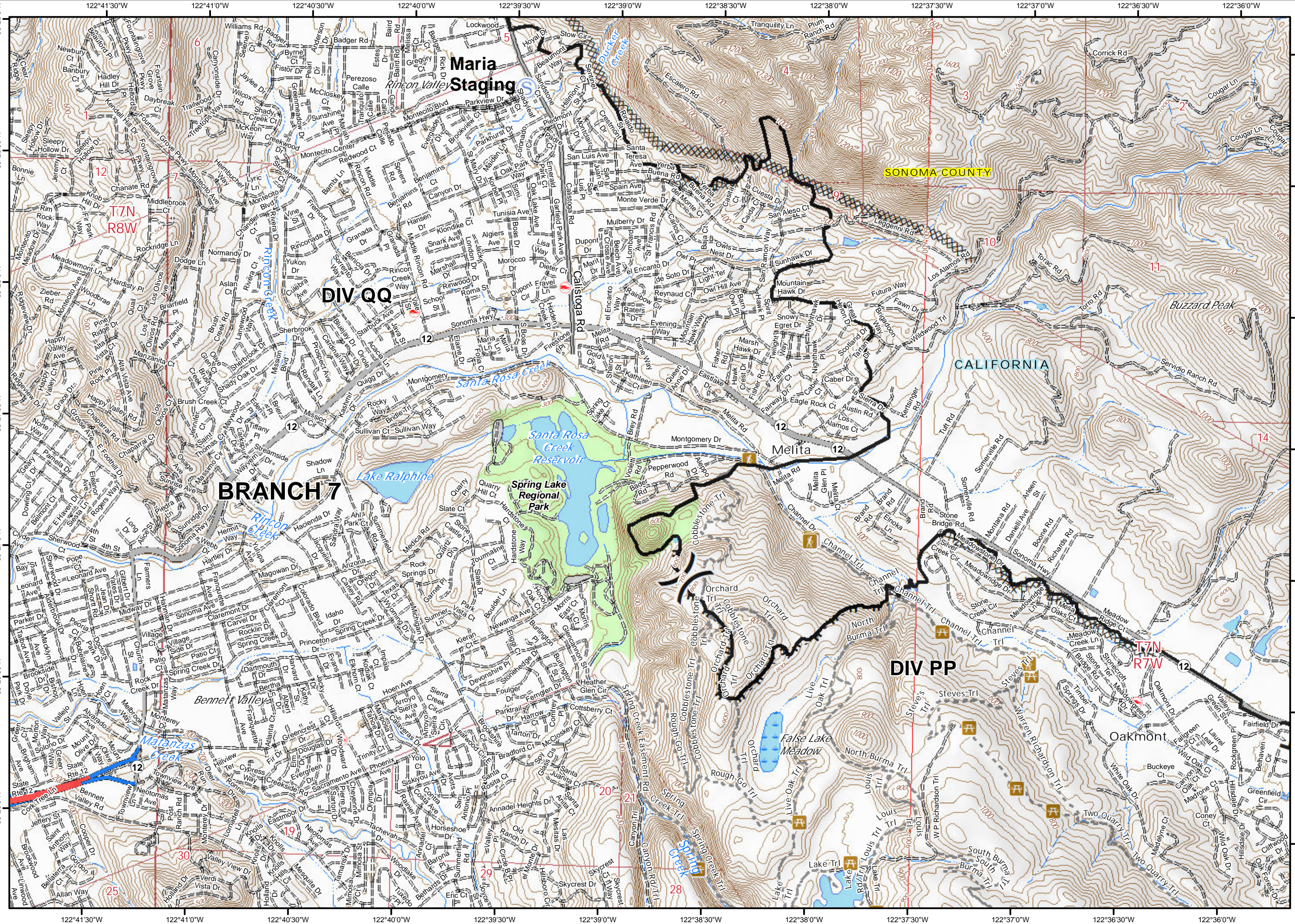
0 0.2 0.4
Miles



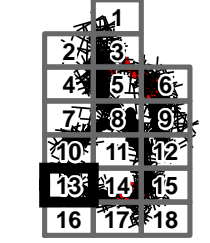
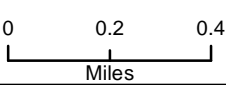


Glass Incident
CA-LNU-015947
Oct 8, 2020
0700 - 0700

IAP Map
Page 13



- Staging Area
- Division Break
- Contained Line
- Completed Dozer Line
- Completed Hand Line



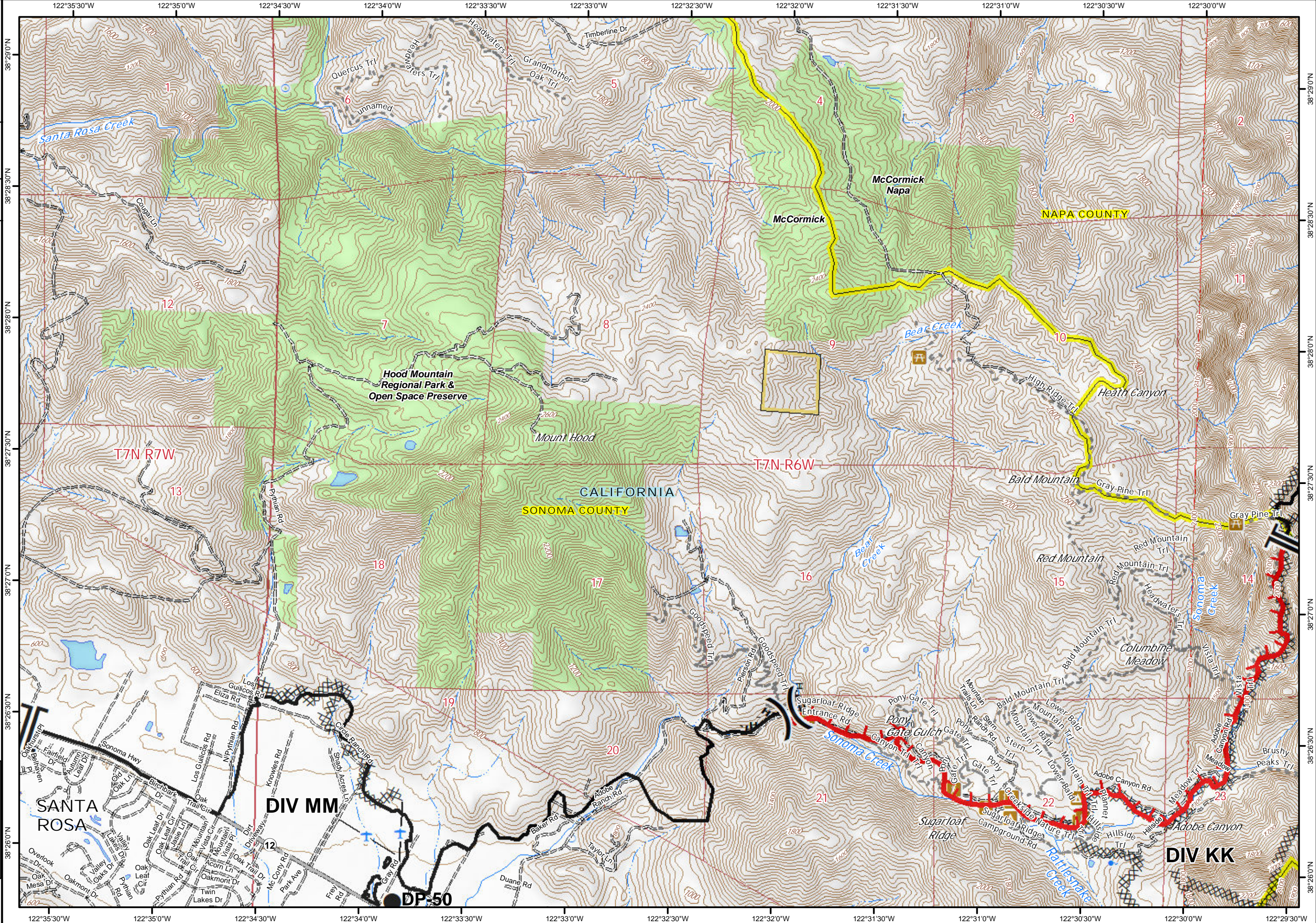
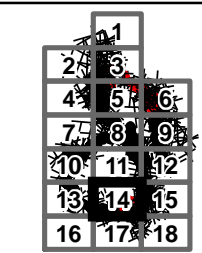


Glass Incident
CA-LNU-015947
Oct 8, 2020
0700 - 0700

IAP Map
Page 14

- Drop Point
-) Division Break
- || Branch Break
- ▬ Uncontrolled Fire Edge
- ▬ Contained Line
- XXXX Completed Dozer Line
- H - Completed Hand Line
- Sonoma County Parks

0 0.2 0.4
Miles



122°35'0"W 122°35'0"W 122°34'30"W 122°34'0"W 122°33'30"W 122°33'0"W 122°32'30"W 122°32'0"W 122°31'30"W 122°31'0"W 122°30'30"W 122°30'0"W

38°29'0"N 38°28'30"N 38°28'0"N 38°27'30"N 38°27'0"N 38°26'30"N 38°26'0"N

Santa Rosa Creek, Bear Creek, Sonoma Creek, Red Mountain, Bald Mountain, Mount Hood, McCormick, Napa, Hood Mountain Regional Park & Open Space Preserve, Santa Rosa, DIV MM, DIV KK, DP-50

1 2 3 4 5 6 7 8 9 10 11 12 13 14 15 16 17 18 19 20 21 22 23

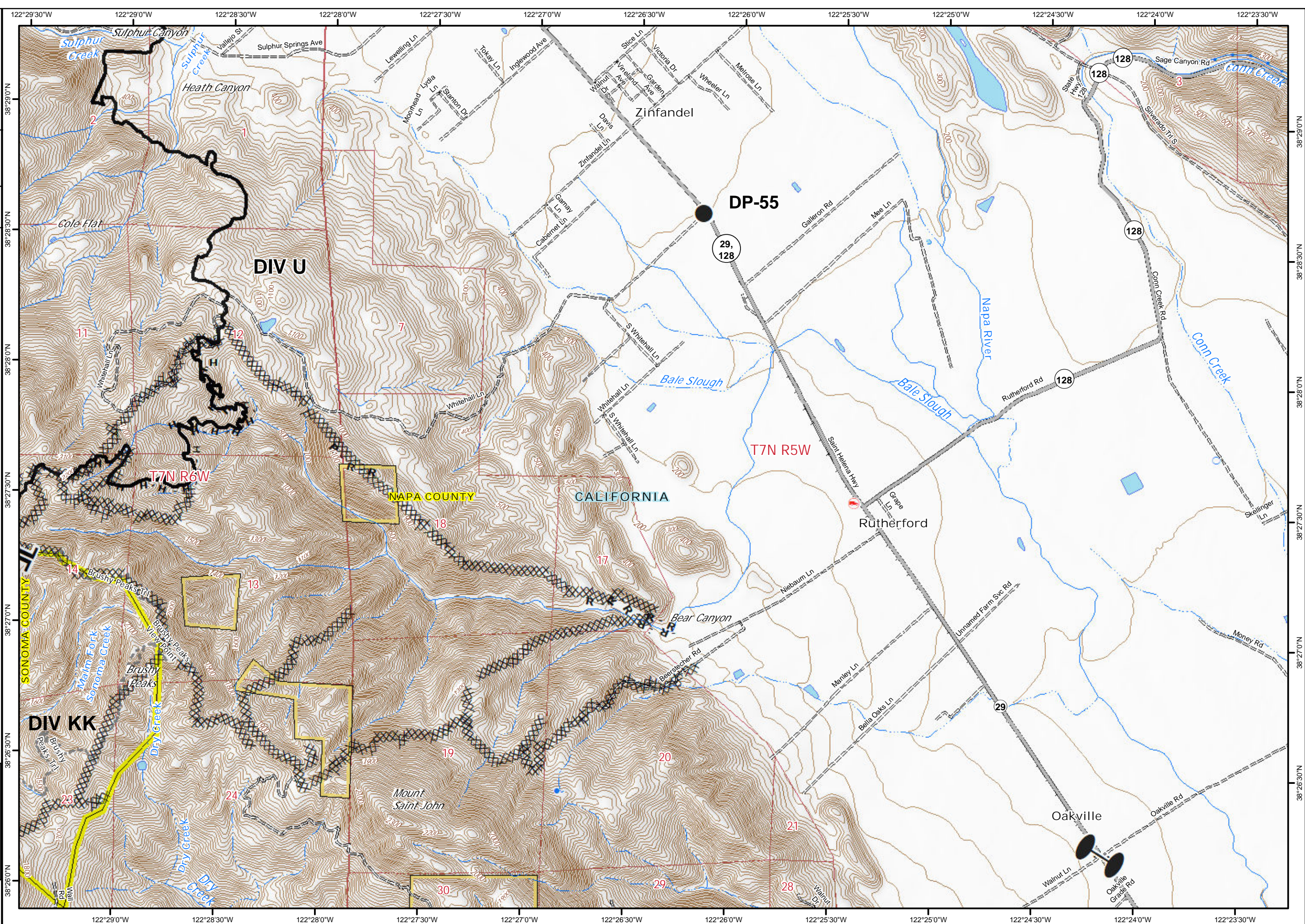
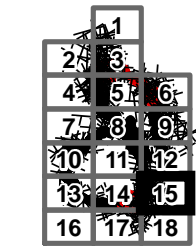


Glass Incident
CA-LNU-015947
Oct 8, 2020
0700 - 0700

IAP Map
Page 15

- Drop Point
- Zone Break
- ▬ Contained Line
- ▨ Completed Dozer Line
- H - Completed Hand Line
- R - Road as Completed Line

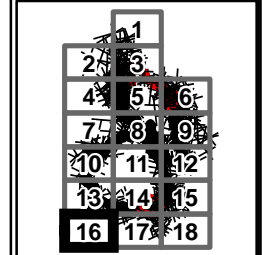
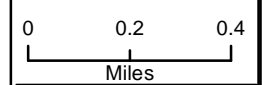
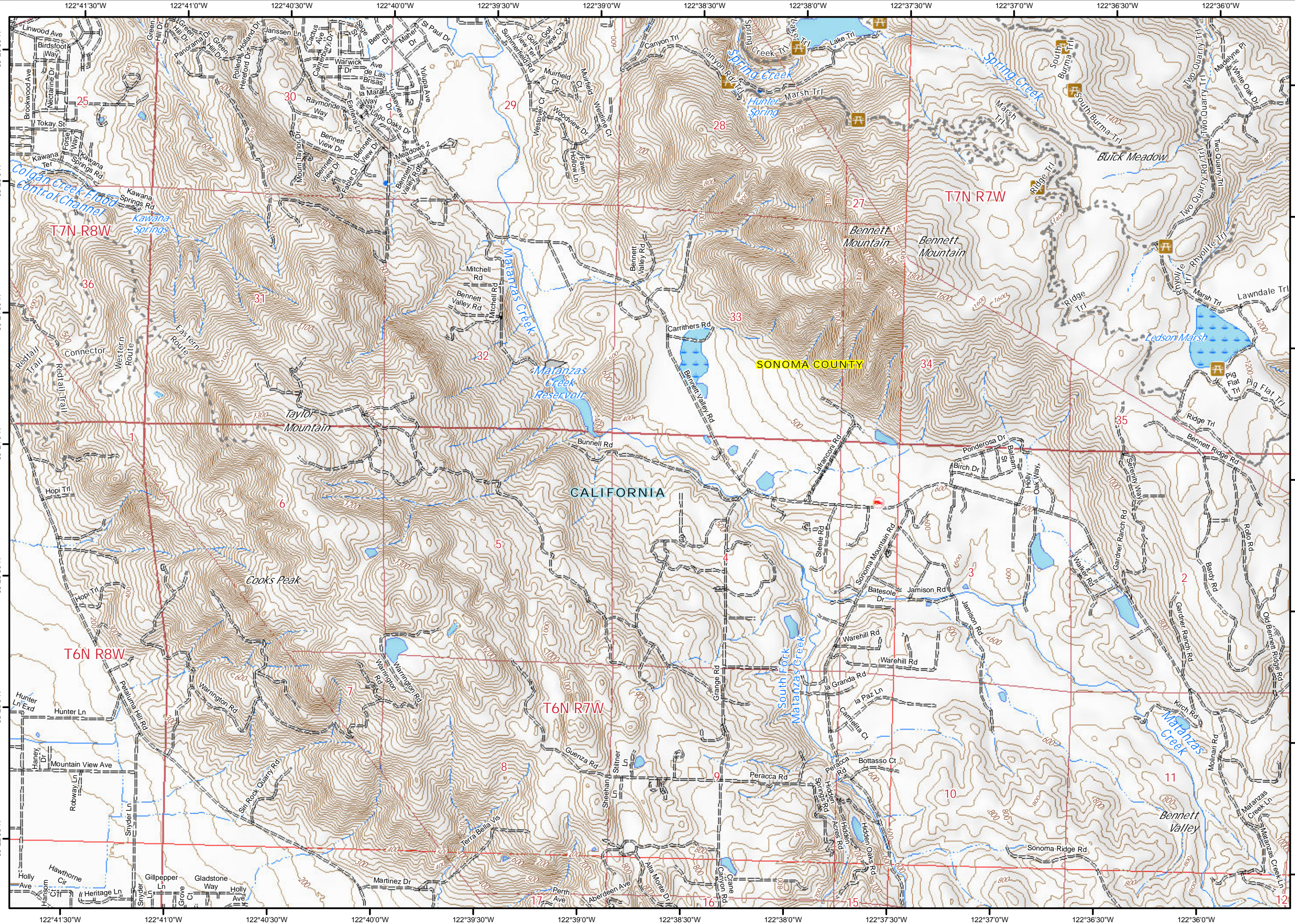
0 0.2 0.4
Miles





Glass Incident
CA-LNU-015947
Oct 8, 2020
0700 - 0700

IAP Map
Page 16



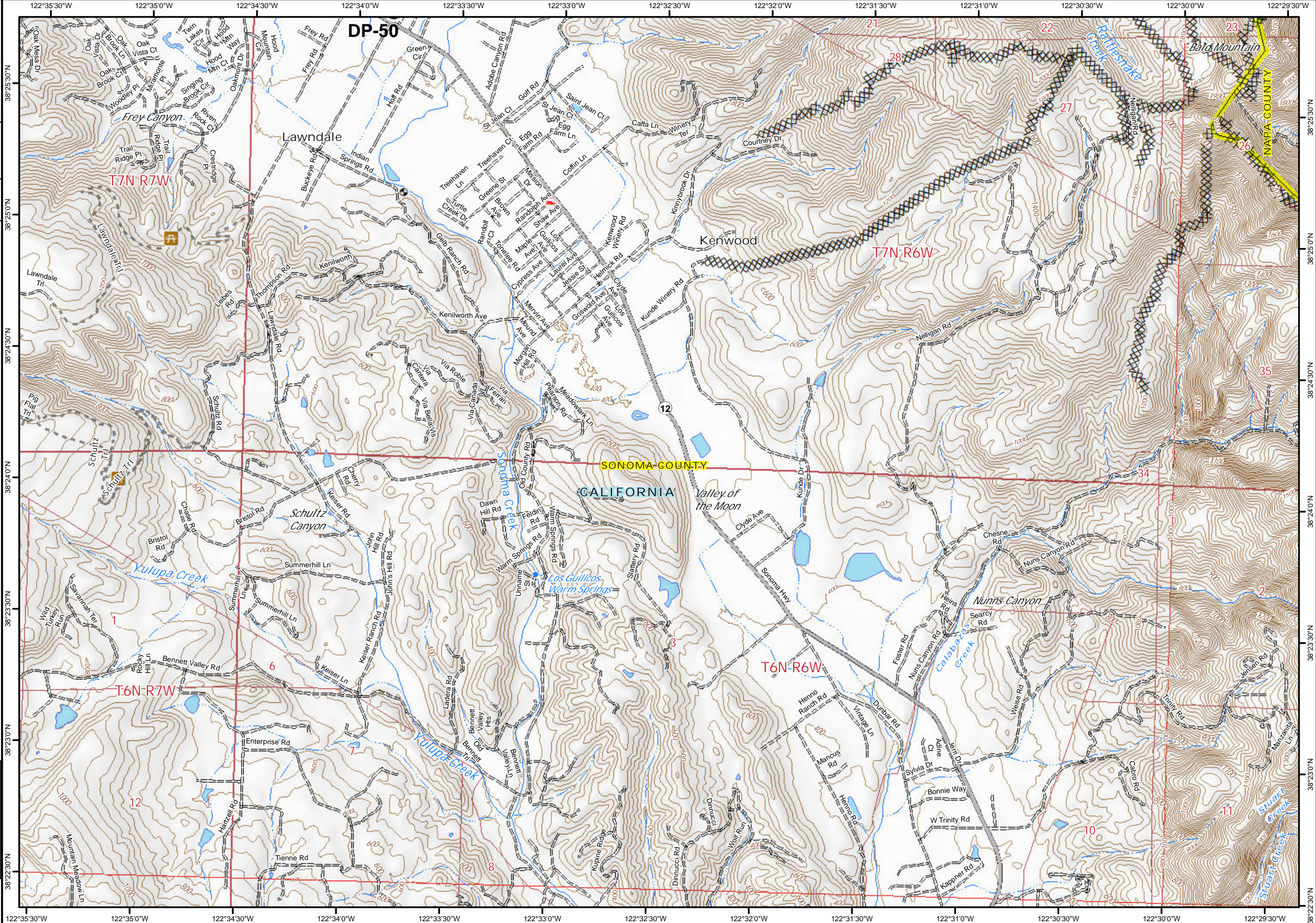
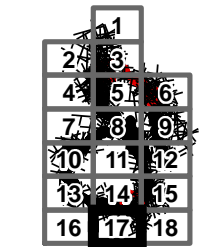


Glass Incident
CA-LNU-015947
Oct 8, 2020
0700 - 0700

IAP Map
Page 17

● Drop Point
XXXX Completed Dozer Line

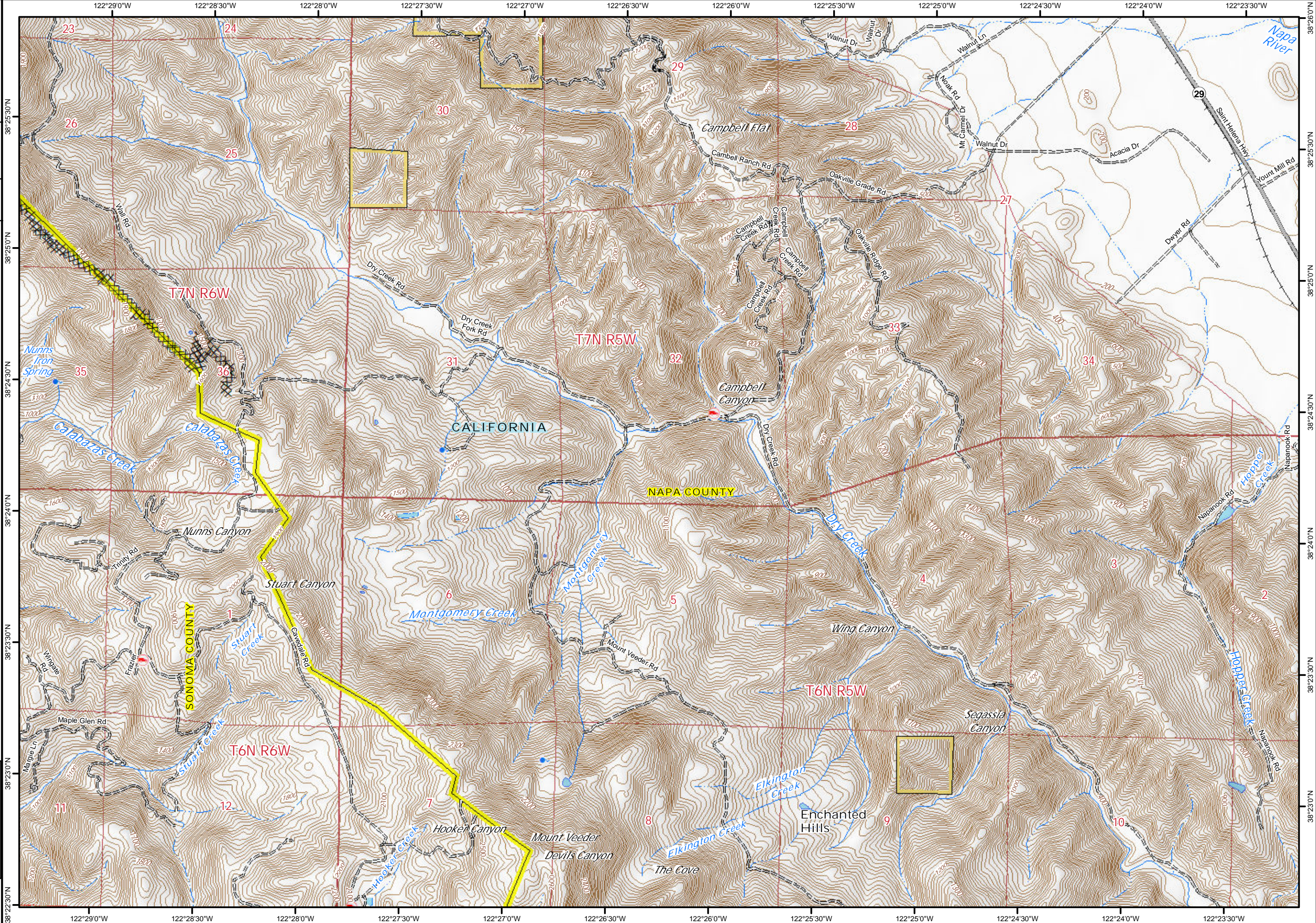
0 0.2 0.4
Miles





Glass Incident
CA-LNU-015947
Oct 8, 2020
0700 - 0700

IAP Map
Page 18



XXXX Completed Dozer Line

0 0.2 0.4
Miles

| | | |
|----|----|----|
| 1 | 2 | 3 |
| 4 | 5 | 6 |
| 7 | 8 | 9 |
| 10 | 11 | 12 |
| 13 | 14 | 15 |
| 16 | 17 | 18 |

