

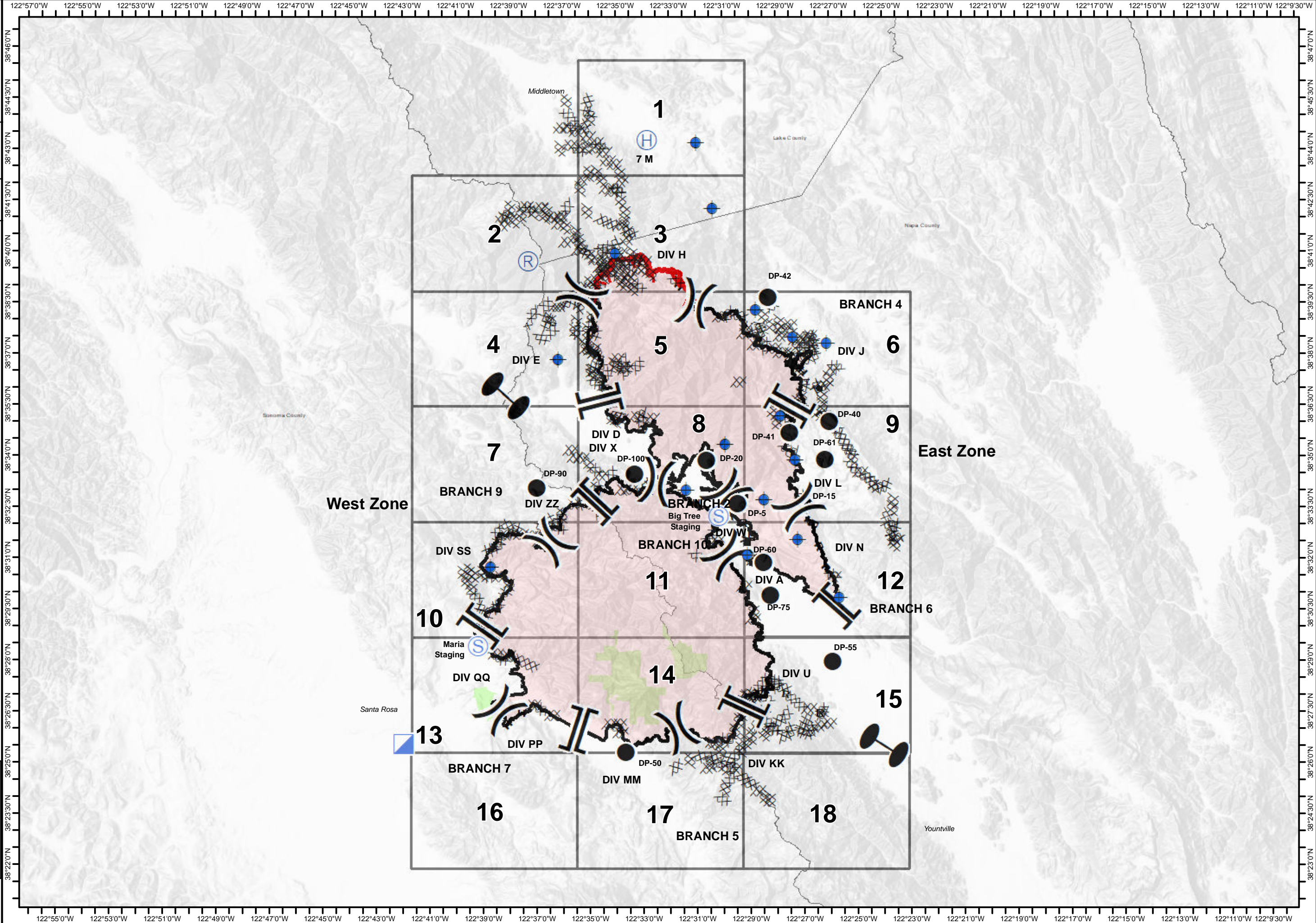
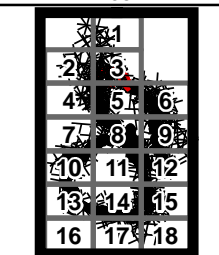


Glass Incident
CA-LNU-015947
Oct 10, 2020
0700 - 0700

IAP Map
Page 0

- Dip Site
- Drop Point
- Helibase
- Incident Command Post
- Repeater
- Staging Area
- Zone Break
- Division Break
- Branch Break
- Uncontrolled Fire Edge
- Contained Line
- Completed Dozer Line
- Completed Hand Line
- Road as Completed Line
- County Boundary
- Sonoma County Parks

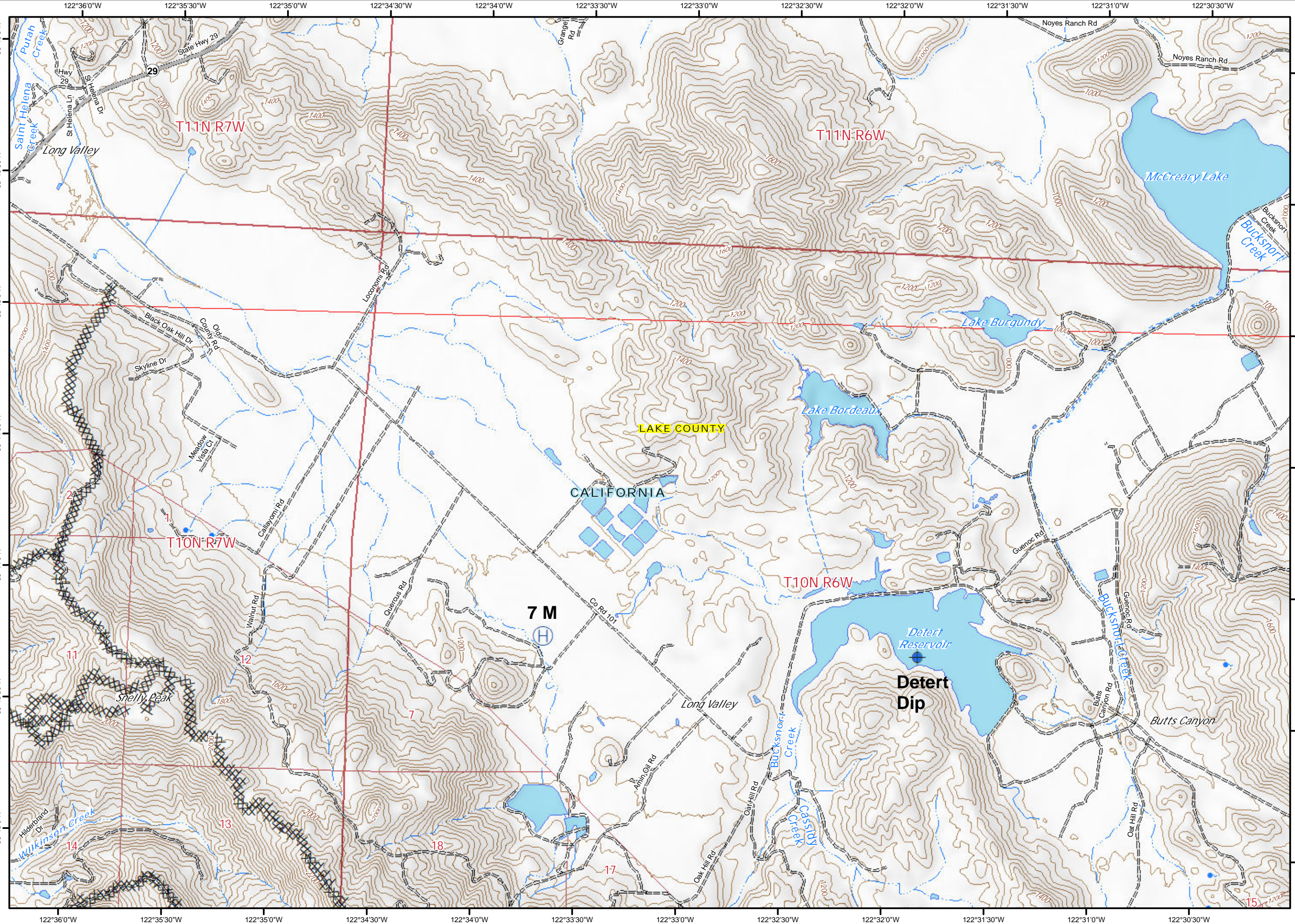
0 1.5 3
Miles



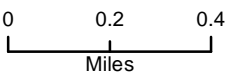


Glass Incident
CA-LNU-015947
Oct 10, 2020
0700 - 0700

IAP Map
Page 1



- Dip Site
- Helibase
- Completed Dozer Line



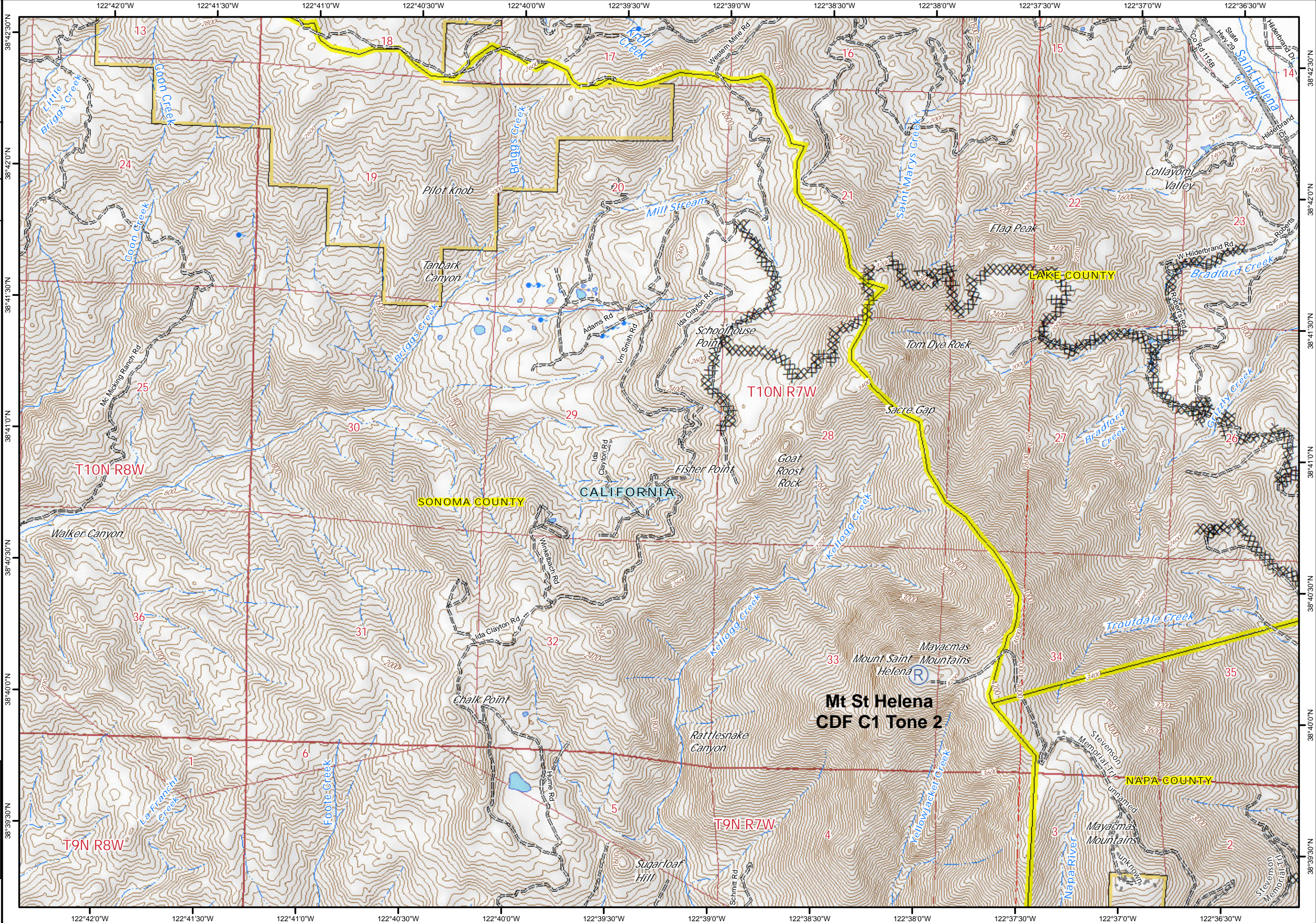
31
2 3
4 5 6
7 8 9
10 11 12
13 14 15
16 17 18



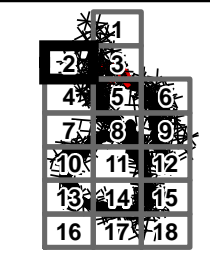
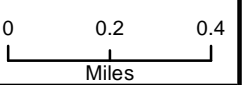


Glass Incident
CA-LNU-015947
Oct 10, 2020
0700 - 0700

IAP Map
Page 2



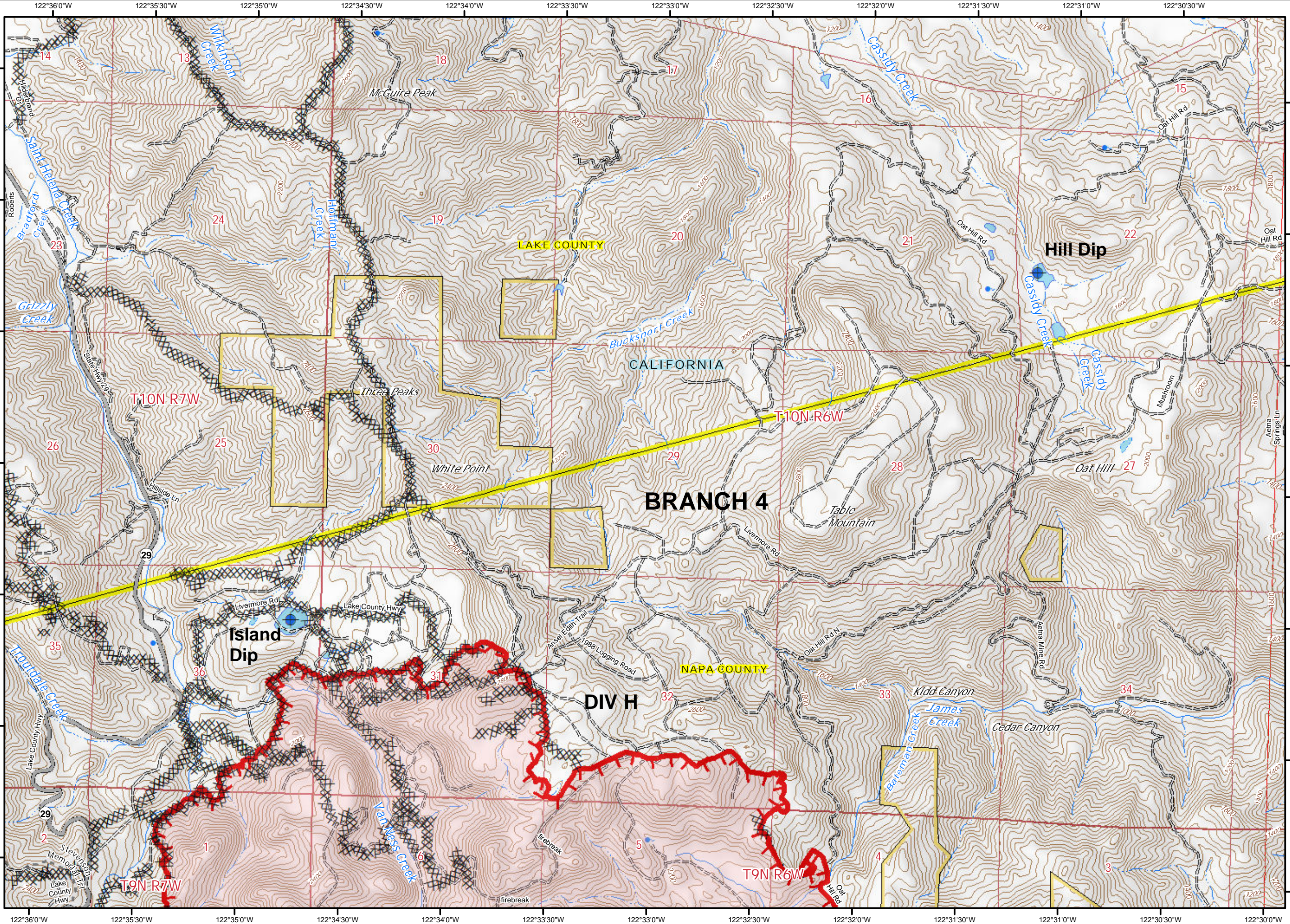
Ⓡ Repeater
XXXX Completed Dozer Line





Glass Incident
CA-LNU-015947
Oct 10, 2020
0700 - 0700

IAP Map
Page 3



- Dip Site
- Uncontrolled Fire Edge
- Completed Dozer Line
- Completed Hand Line

0 0.2 0.4
Miles

31		
2	3	
4	5	6
7	8	9
10	11	12
13	14	15
16	17	18



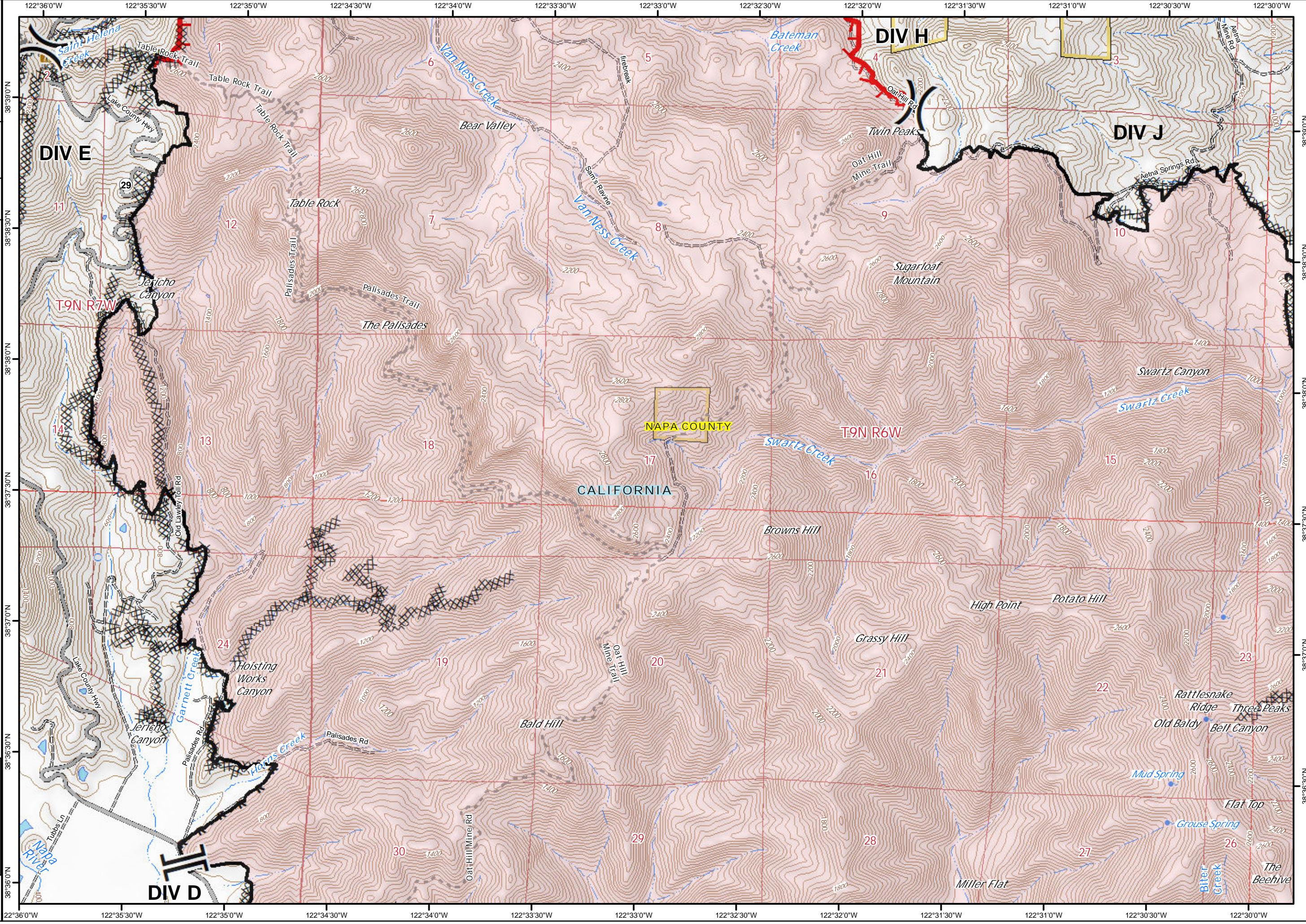
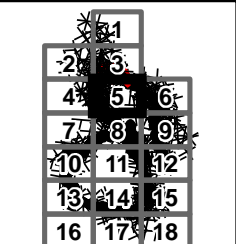


Glass Incident
CA-LNU-015947
Oct 10, 2020
0700 - 0700

IAP Map
Page 5

- () Division Break
- [] Branch Break
- Uncontrolled Fire Edge
- Contained Line
- Completed Dozer Line
- H - Completed Hand Line
- R - Road as Completed Line

0 0.2 0.4
Miles



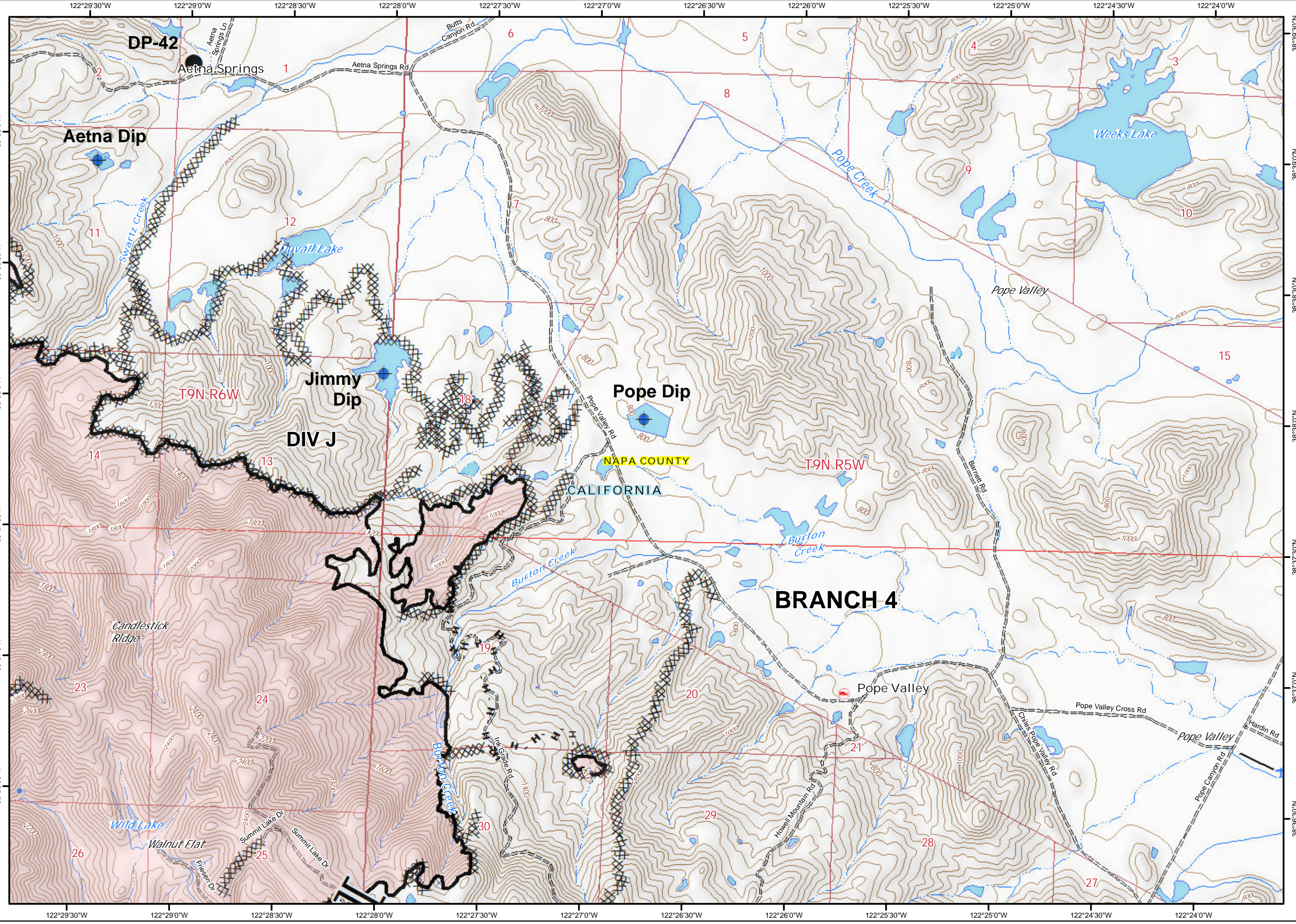
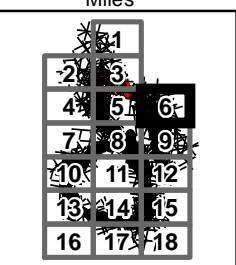


Glass Incident
CA-LNU-015947
Oct 10, 2020
0700 - 0700

IAP Map
Page 6

- Dip Site
- Drop Point
- Branch Break
- Contained Line
- Completed Dozer Line
- Completed Hand Line
- Road as Completed Line

0 0.2 0.4
Miles



122°29'30"W 122°29'0"W 122°28'30"W 122°28'0"W 122°27'30"W 122°27'0"W 122°26'30"W 122°26'0"W 122°25'30"W 122°25'0"W 122°24'30"W 122°24'0"W

38°39'00"N
38°38'30"N
38°38'00"N
38°37'30"N
38°37'00"N
38°36'30"N

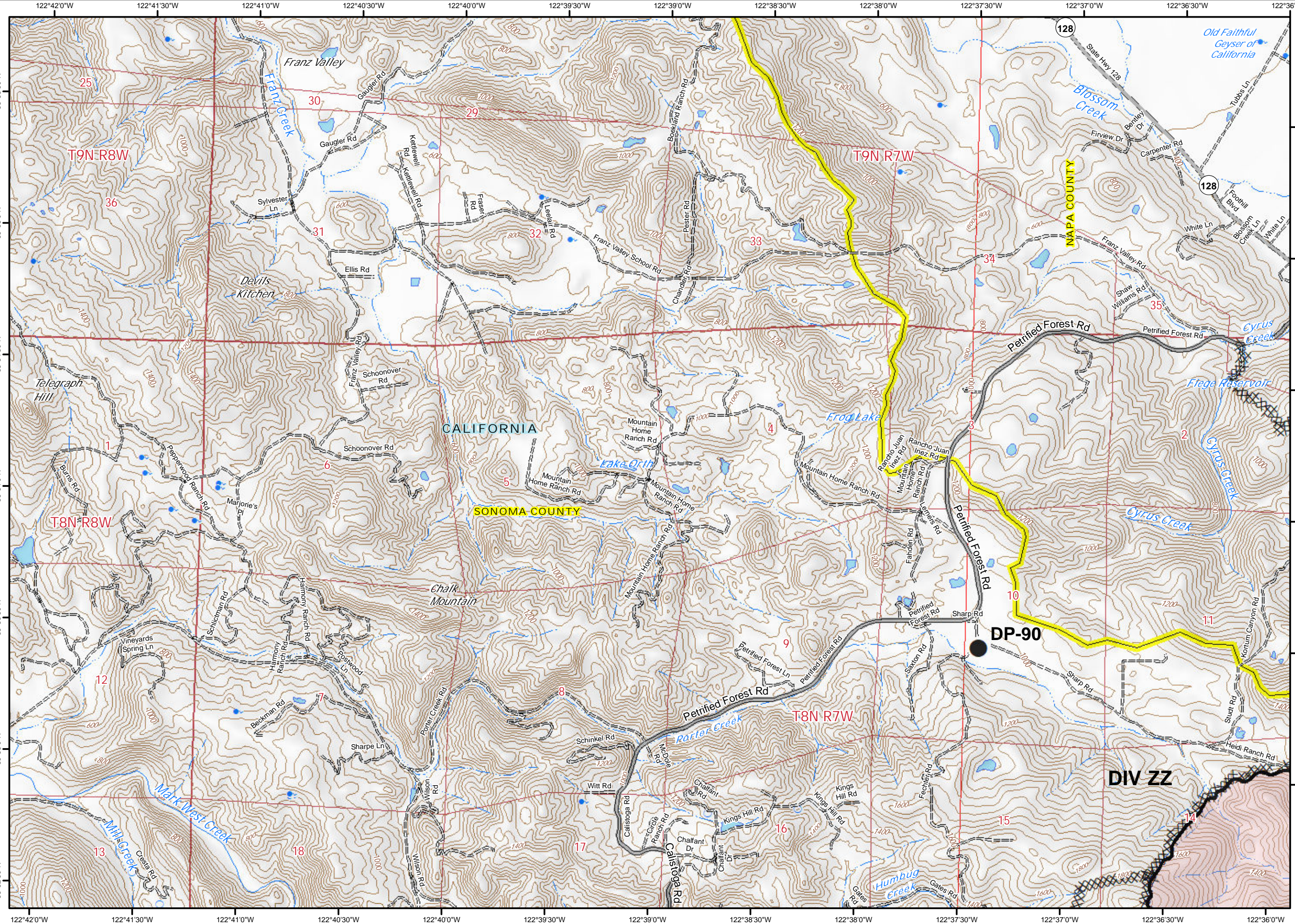
38°39'00"N
38°38'30"N
38°38'00"N
38°37'30"N
38°37'00"N
38°36'30"N

122°29'30"W 122°29'0"W 122°28'30"W 122°28'0"W 122°27'30"W 122°27'0"W 122°26'30"W 122°26'0"W 122°25'30"W 122°25'0"W 122°24'30"W 122°24'0"W

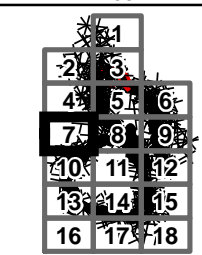
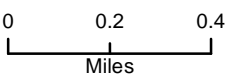


Glass Incident
CA-LNU-015947
Oct 10, 2020
0700 - 0700

IAP Map
Page 7



- Drop Point
- Contained Line
- XXXX Completed Dozer Line





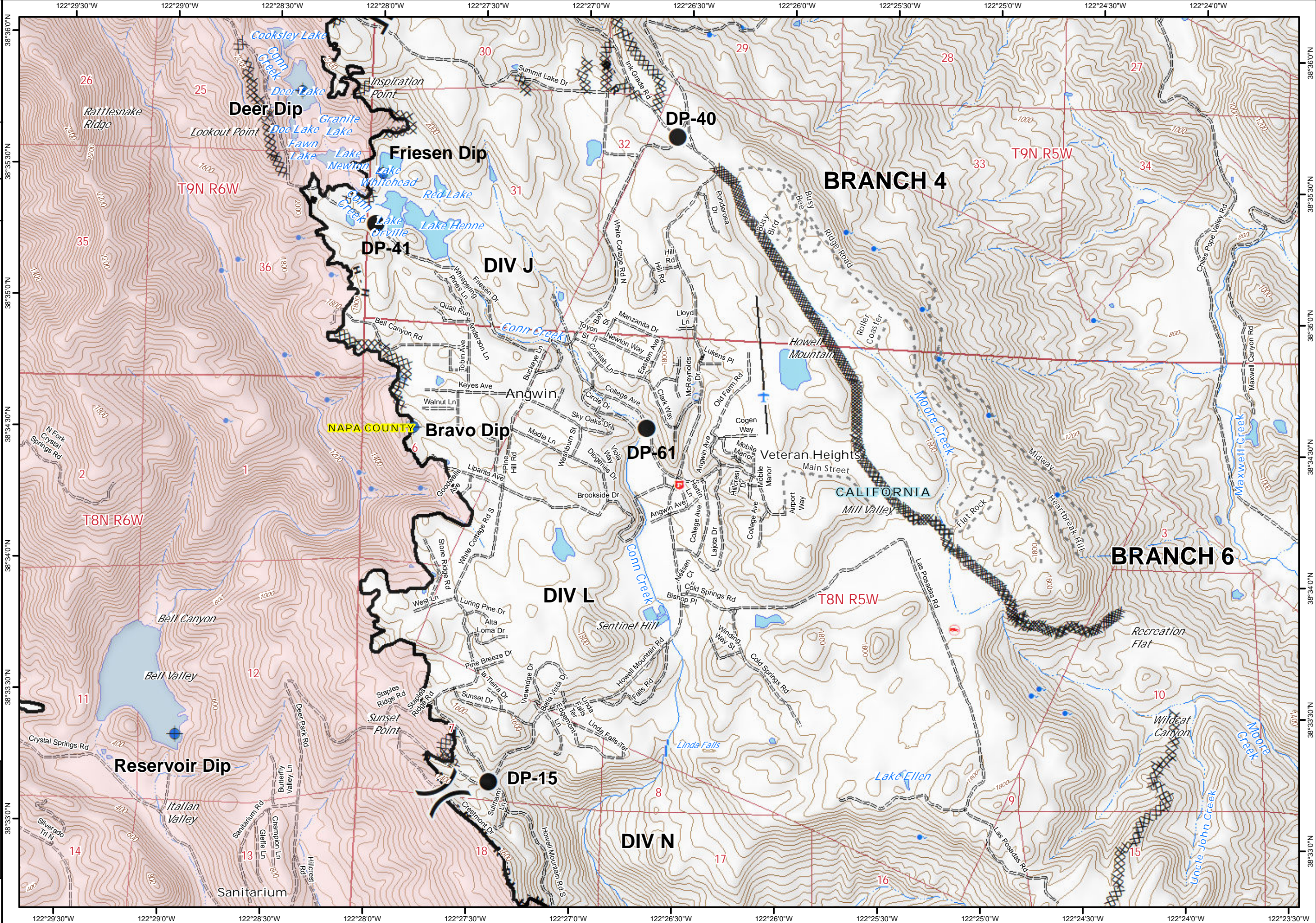
Glass Incident
CA-LNU-015947
Oct 10, 2020
0700 - 0700

IAP Map
Page 9

- Dip Site
- Drop Point
- Division Break
- Branch Break
- Contained Line
- Completed Dozer Line
- Completed Hand Line
- Road as Completed Line

0 0.2 0.4
Miles

1	2	3
4	5	6
7	8	9
10	11	12
13	14	15
16	17	18



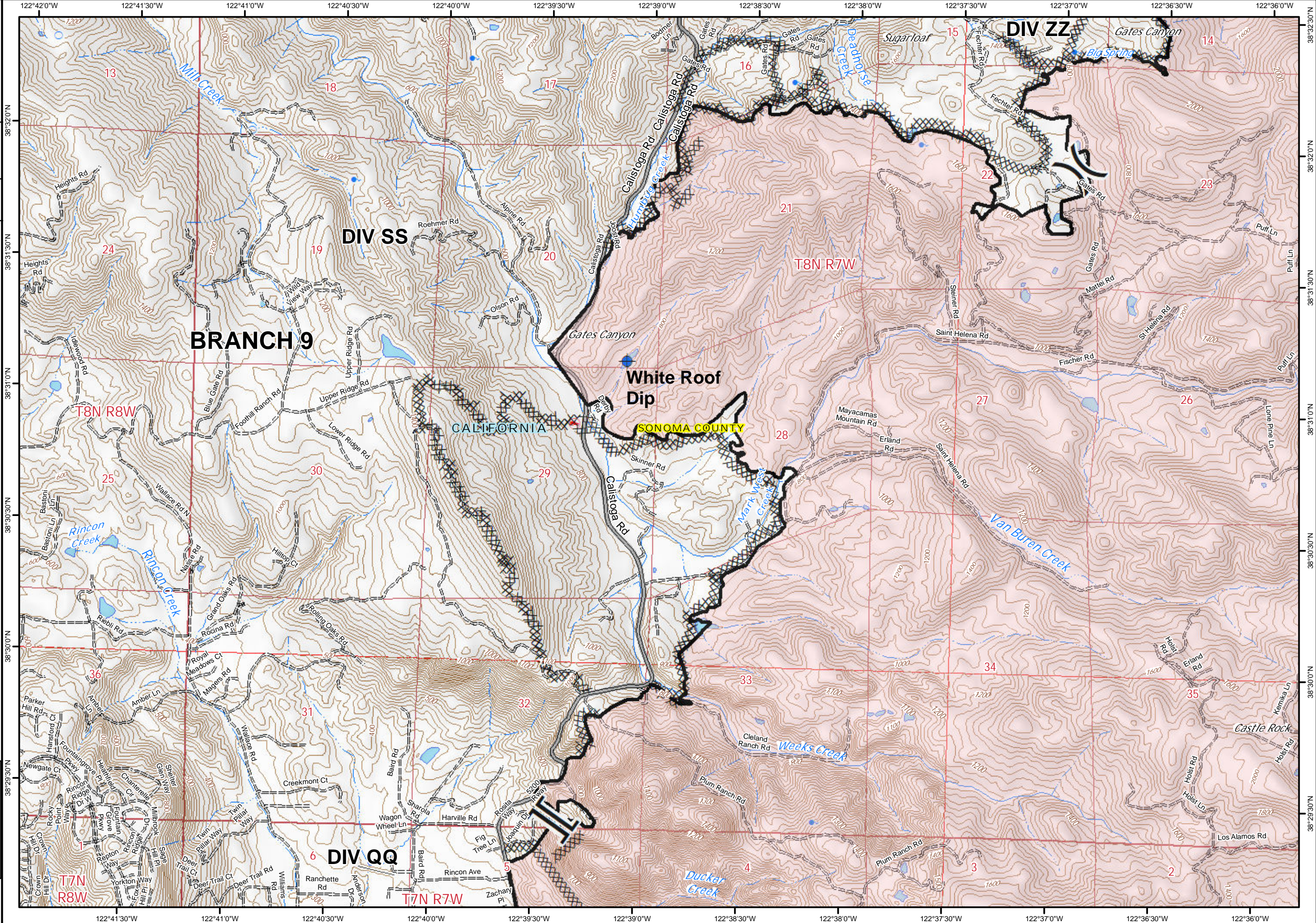
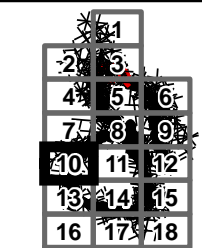


Glass Incident
CA-LNU-015947
Oct 10, 2020
0700 - 0700

IAP Map
Page 10

- Dip Site
- Division Break
- Branch Break
- Contained Line
- Completed Dozer Line

0 0.2 0.4
Miles



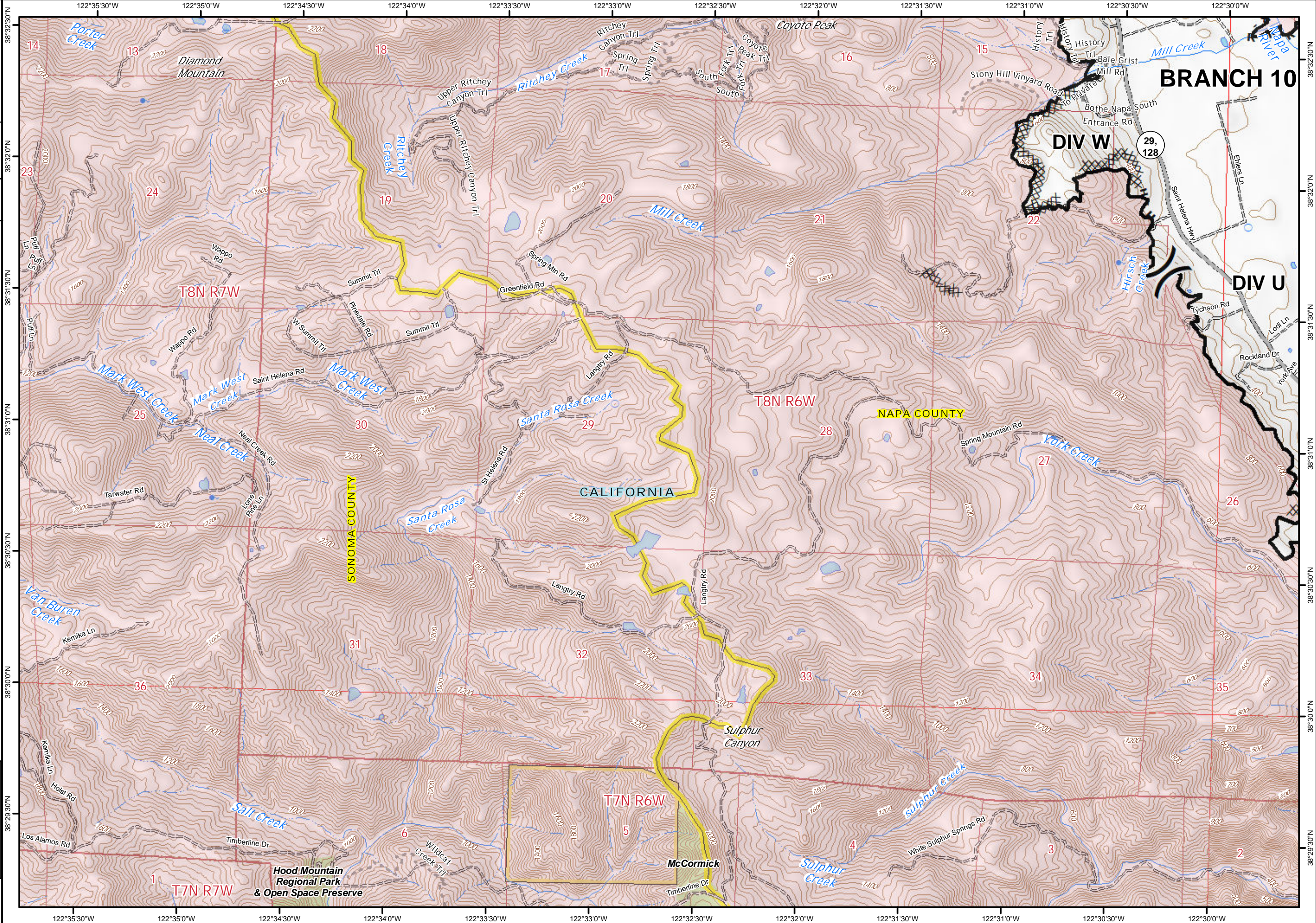
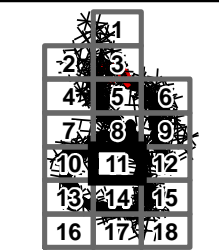


Glass Incident
CA-LNU-015947
Oct 10, 2020
0700 - 0700

IAP Map
Page 11

- Division Break
- Contained Line
- Completed Dozer Line
- Completed Hand Line
- Road as Completed Line
- Sonoma County Parks

0 0.2 0.4
Miles



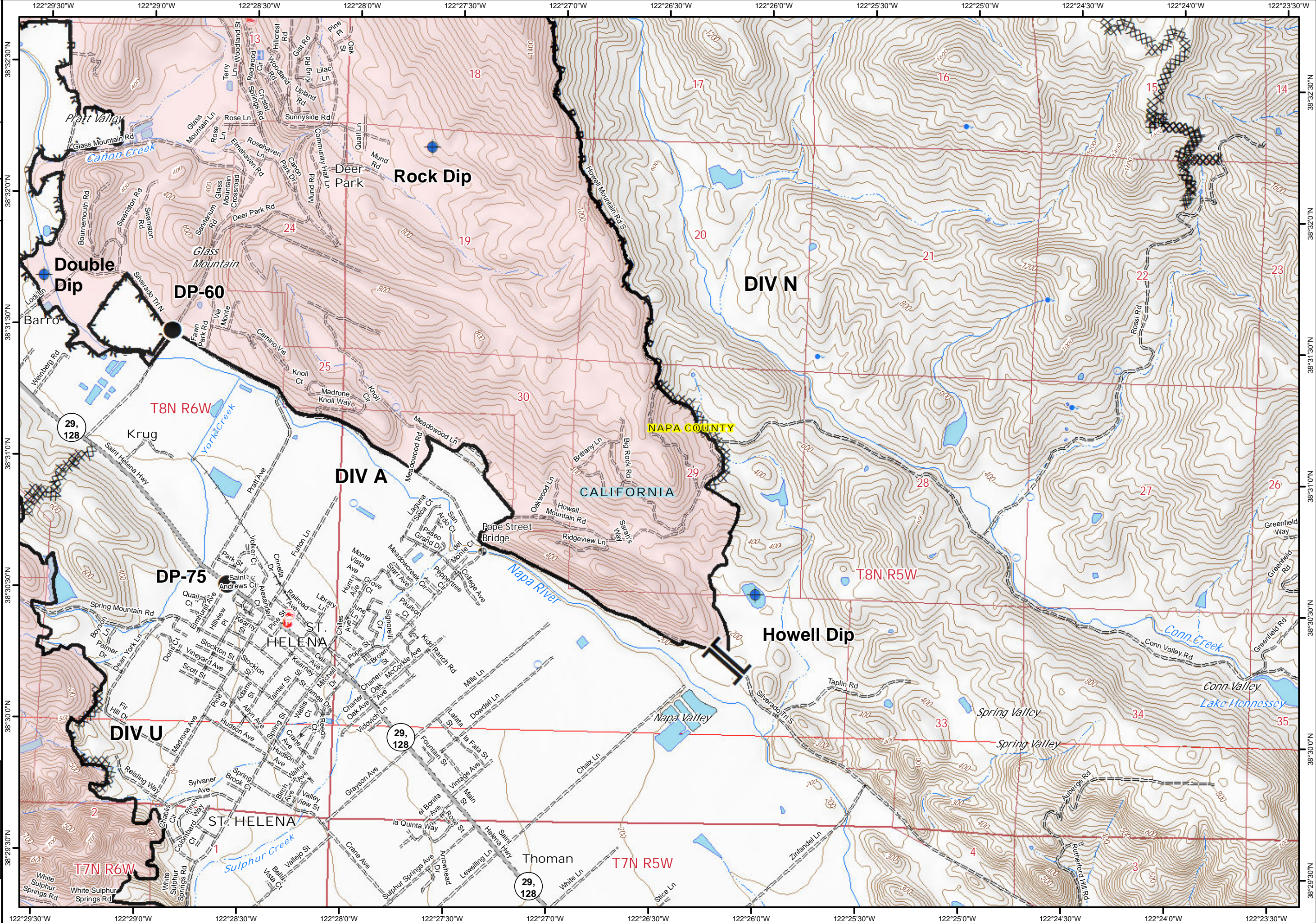
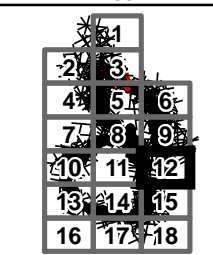


Glass Incident
CA-LNU-015947
Oct 10, 2020
0700 - 0700

IAP Map
Page 12

- Dip Site
- Drop Point
- Branch Break
- Contained Line
- Completed Dozer Line
- Completed Hand Line
- Road as Completed Line

0 0.2 0.4
Miles



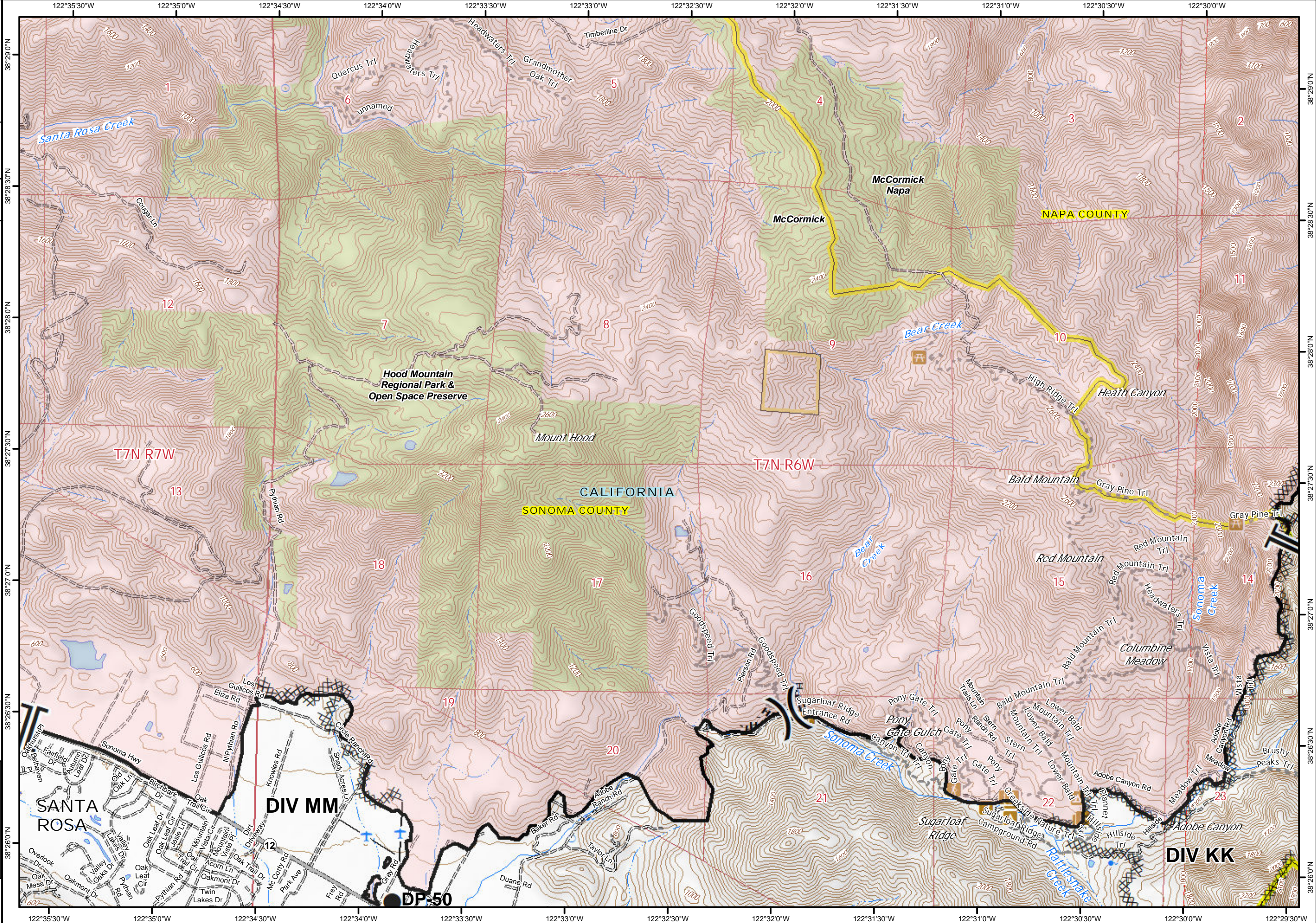
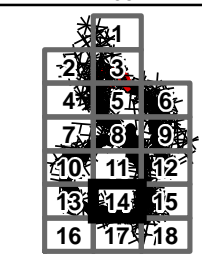


Glass Incident
CA-LNU-015947
Oct 10, 2020
0700 - 0700

IAP Map
Page 14

- Drop Point
-) Division Break
- || Branch Break
- ▬ Contained Line
- XXXX Completed Dozer Line
- H - Completed Hand Line
- Sonoma County Parks

0 0.2 0.4
Miles



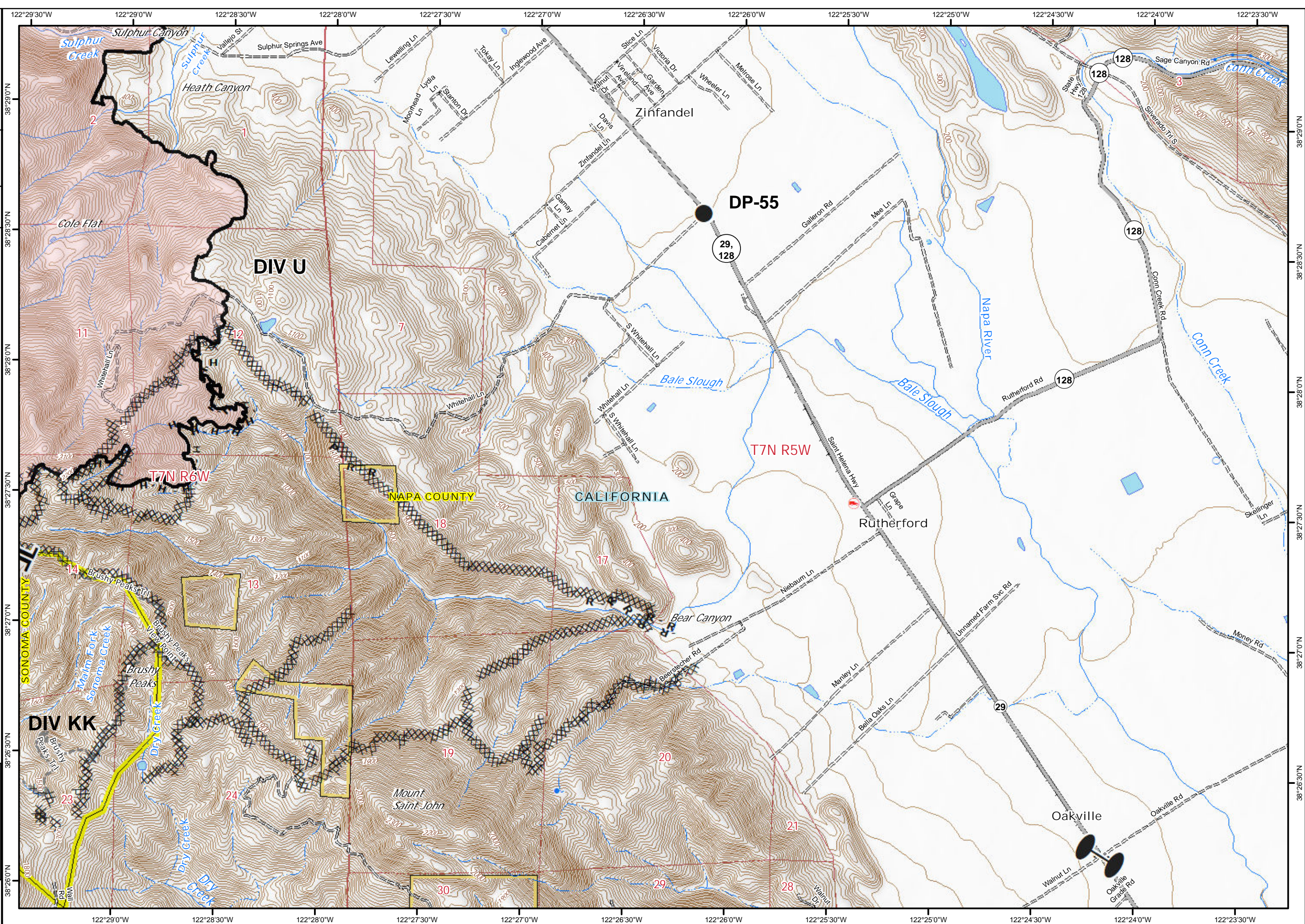
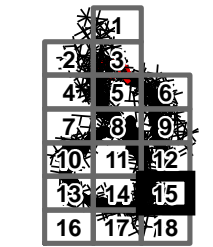


Glass Incident
CA-LNU-015947
Oct 10, 2020
0700 - 0700

IAP Map
Page 15

- Drop Point
- Zone Break
- ▬ Contained Line
- ▨ Completed Dozer Line
- H - Completed Hand Line
- R - Road as Completed Line

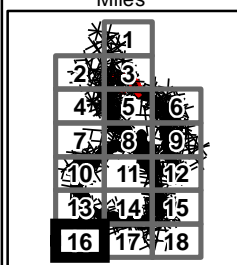
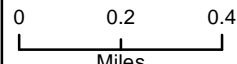
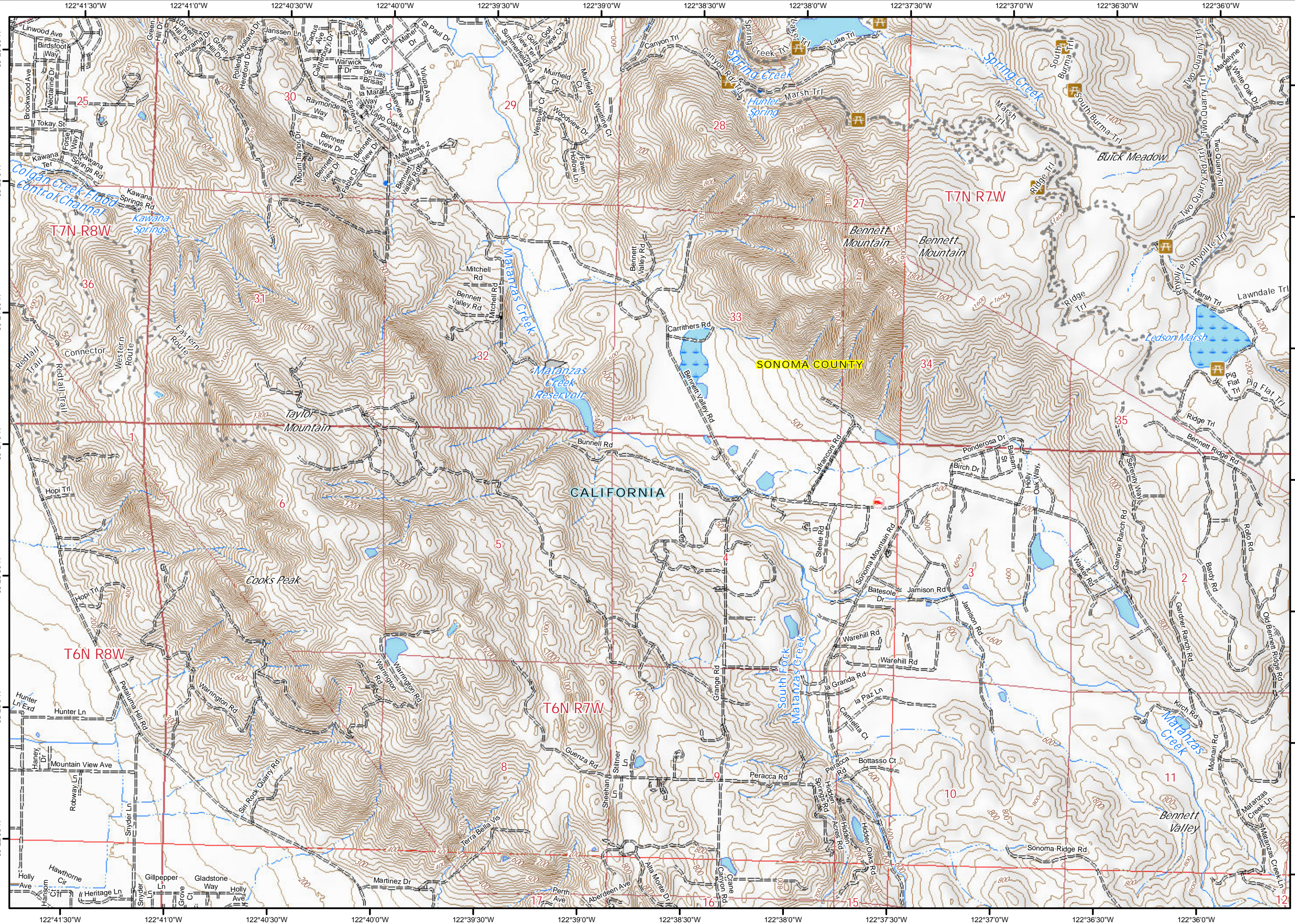
0 0.2 0.4
Miles





Glass Incident
CA-LNU-015947
Oct 10, 2020
0700 - 0700

IAP Map
Page 16



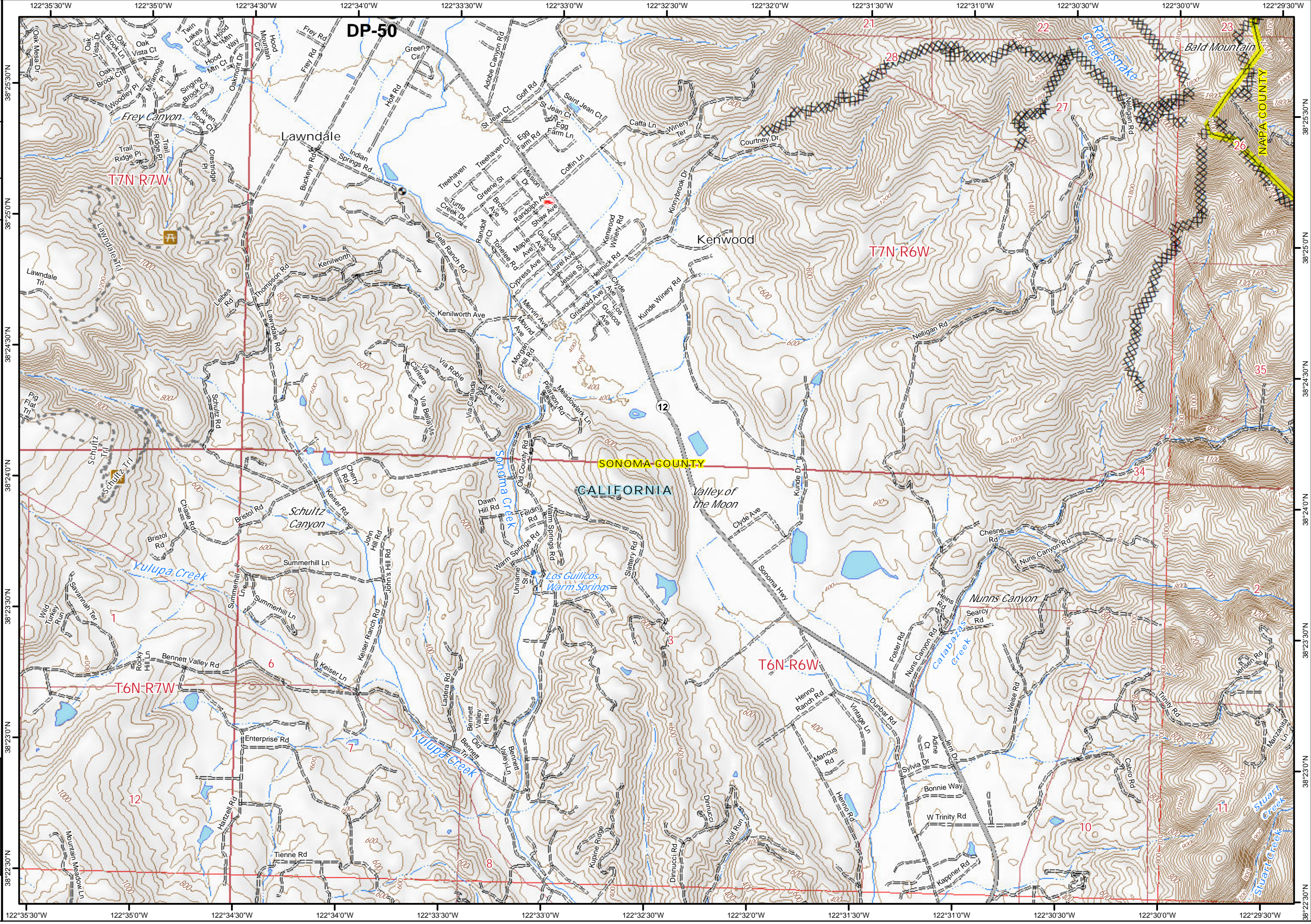
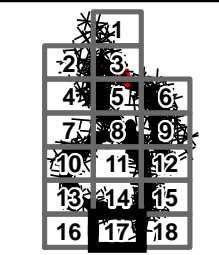


Glass Incident
CA-LNU-015947
Oct 10, 2020
0700 - 0700

IAP Map
Page 17

● Drop Point
XXXX Completed Dozer Line

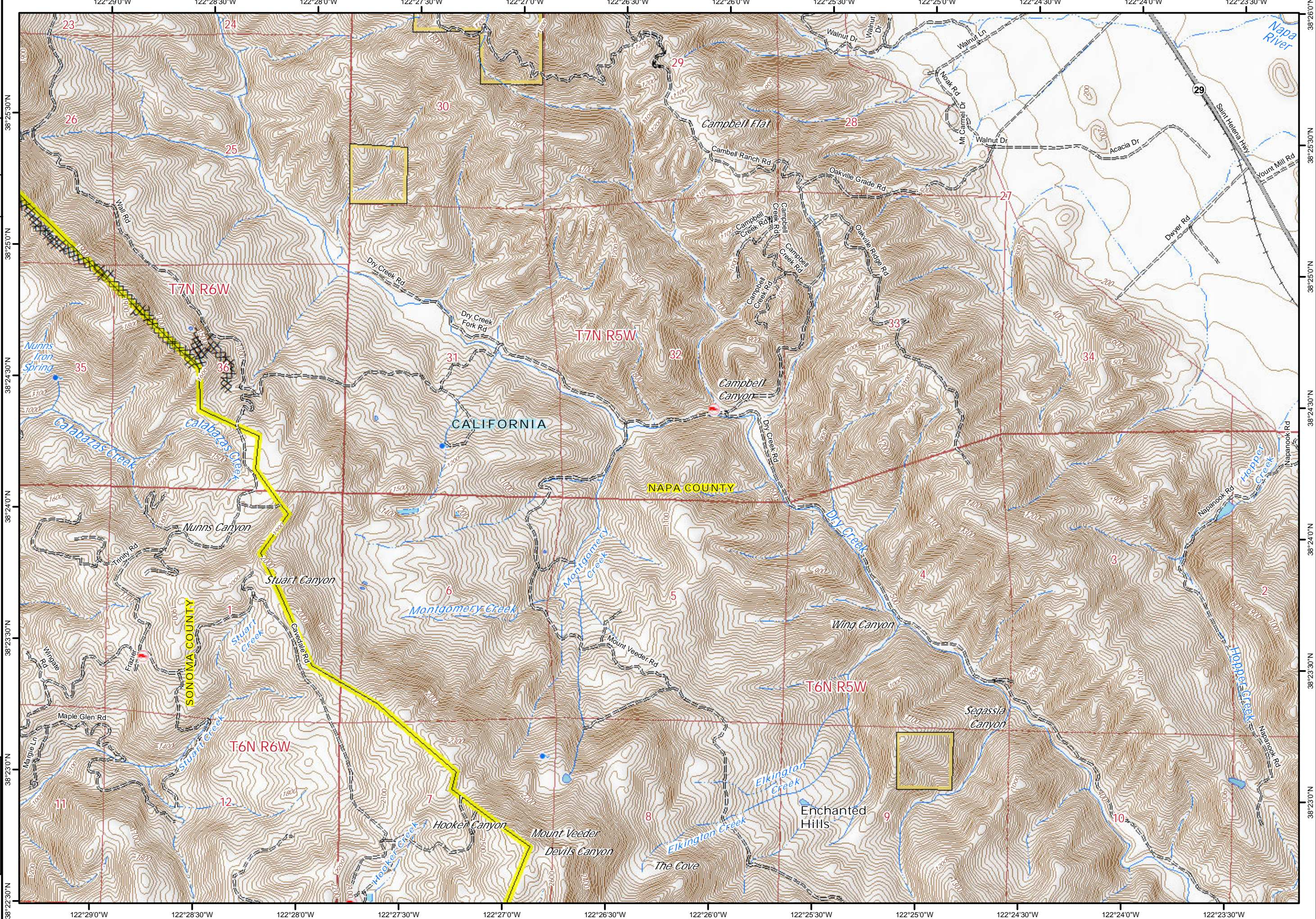
0 0.2 0.4
Miles





Glass Incident
CA-LNU-015947
Oct 10, 2020
0700 - 0700

IAP Map
Page 18



XXXX Completed Dozer Line

