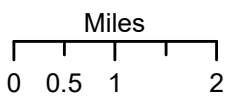
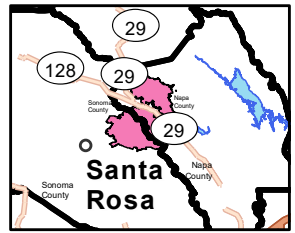


PROGRESSION

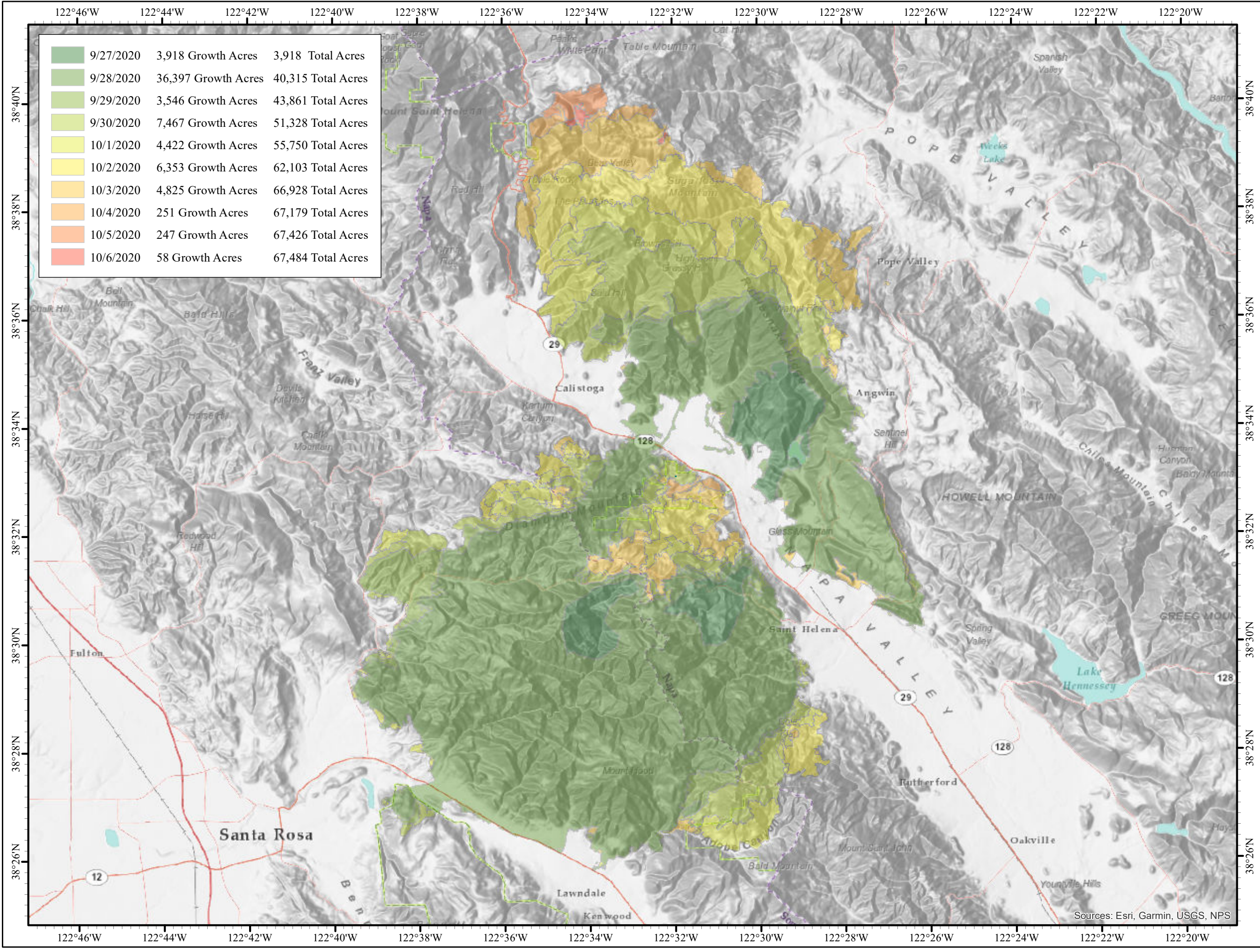
MAP FINAL

GLASS
CA-LNU-015947



1:120,000
Team 3 GIS
NAD 83

| | | | |
|--|-----------|---------------------|--------------------|
| | 9/27/2020 | 3,918 Growth Acres | 3,918 Total Acres |
| | 9/28/2020 | 36,397 Growth Acres | 40,315 Total Acres |
| | 9/29/2020 | 3,546 Growth Acres | 43,861 Total Acres |
| | 9/30/2020 | 7,467 Growth Acres | 51,328 Total Acres |
| | 10/1/2020 | 4,422 Growth Acres | 55,750 Total Acres |
| | 10/2/2020 | 6,353 Growth Acres | 62,103 Total Acres |
| | 10/3/2020 | 4,825 Growth Acres | 66,928 Total Acres |
| | 10/4/2020 | 251 Growth Acres | 67,179 Total Acres |
| | 10/5/2020 | 247 Growth Acres | 67,426 Total Acres |
| | 10/6/2020 | 58 Growth Acres | 67,484 Total Acres |



Sources: Esri, Garmin, USGS, NPS