

****CORRECTED****

INCIDENT ACTION PLAN GLASS INCIDENT

CA-LNU-015947

Saturday



BRIEFING BROADCAST - VFIRE 25

OPERATIONAL PERIOD



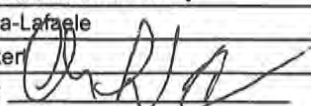
10/10/2020 0700
to
10/11/2020 0700



INCIDENT OBJECTIVES (ICS 202)

1. Incident Name: <p style="text-align: center; margin: 0;">GLASS</p>		2. Operational Period:		Date From: 10/10/2020	Date To: 10/11/2020
				Time From: 0700	Time To: 0700
3. Objective(s):					
<u>Strategic Objectives</u>					
A full suppression strategy is to be implemented on the Glass Incident. Values at risk associated to the incident include human safety, private property and associated improvements, electrical power infrastructure, and cultural values. Minimize acres burned on all lands by utilizing effective and efficient strategies and tactics while maintaining safety first.					
<u>Leaders Intent</u>					
Work effectively with cooperative partners towards a common goal of protecting values in a safe and efficient manner. All incident assigned personnel should be prepared to take the appropriate actions regarding:					
<ul style="list-style-type: none"> Professional behavior, conduct timely / effective communications Personal safety and safety of others, including driving slowly, safely and defensively Implementation of tactics that offer a high probability of success Manage fatigue by taking breaks and maintaining work rest cycles 					
<u>Management Objectives</u>					
<ul style="list-style-type: none"> - Utilize aggressive tactical patrol and mop-up strategies while maintaining safe work practices to minimize threats to the public and emergency responders; all actions and efforts will focus on safeguarding the citizens, communities and resources of Napa and Sonoma counties - Ensure COVID-19 precautions and best practices are met always - Ensure repopulations occurs in a safe, efficient and effective manner - Minimize damage to structures, private property and other improvements in the fire area - Protect natural, cultural and heritage resources - Continue to foster and maintain positive relationships with all local cooperators and stakeholders - Provide timely and accurate incident information - Maintain fiscal accountability, keeping costs commensurate with values at risk 					
<u>Control Objectives</u>					
<ul style="list-style-type: none"> - Keep the fire within existing containment / control lines. 					
General Situational Awareness:					
Steep and rugged terrain, critically dry and receptive fuel beds, active area for fire history and drought stressed trees.					
<u>Stop, Think, Organize, Proceed</u>					
5. Site Safety Plan Required?			Yes <input type="checkbox"/> No <input checked="" type="checkbox"/>		
Approved Site Safety Plan(s) Located at:					
6. Incident Action Plan					
<input checked="" type="checkbox"/> ICS 203	<input checked="" type="checkbox"/> ICS 208	<input checked="" type="checkbox"/> ICS 205 A			
<input type="checkbox"/> ICS 203A	<input checked="" type="checkbox"/> ICS 215A	<input checked="" type="checkbox"/> ICS 214			
<input checked="" type="checkbox"/> Weather	<input checked="" type="checkbox"/> ICS 204	<input type="checkbox"/>			
<input checked="" type="checkbox"/> Fire Behavior	<input checked="" type="checkbox"/> ICS 220	<input type="checkbox"/>			
<input checked="" type="checkbox"/> ICS 206	<input checked="" type="checkbox"/> ICS 205	<input type="checkbox"/>			
7. Prepared By: Buddy Bloxham		Position/Title: PSC		Signature:	
8. Approved by Incident Commander:		Billy See		Signature:	
ICS 202					

ORGANIZATION ASSIGNMENT LIST (ICS 203)

1. Incident Name: GLASS		2. Operational Period: Date From: 10/10/2020 Time From: 0700		Date To: 10/11/2020 Time To: 0700	
3. Incident Commander(s) and Command Staff:			7. Operation Section:		
IC/UC's	Billy See, Andrew Cash, Jon Crawford		Operations	Sean Norman / Jeremy Pierce (T)	
Deputy	Bob Farias, Geoff Belyea (T), Kevin Bohall (T)		Deputy Operations	Andy Turner	
Safety Officer	David Sargenti, Damon Godden (T)		Night Ops	Jeff Ohs / Sean Jerry (T)	
Information Officer	Blanca Mercado		Staging Area		
Liaison Officer	Mike Smith, Jeff Dapper		Branch	2 / 4 / 6	C. Martinell / A. Latta (12)
L. E. Liasion	Jason Jared		Division/Group	A / D / L / N	M. Staley
4. Agency/Organization Representatives:			Division/Group	E / H	N. Deurloo / T. Chambon (T)
Agency/Organization	Name		Division/Group	J	R. Lawler (12)
LNU Agency Admin.	Shana Jones		Division/Group		
LNU Line Officer	Tom Knecht		Division/Group		
CHP Napa	John Blencowe		Branch	5 / 7 / 9 / 10	M. Turberville
CHP Sonoma	Aristotle Wolfe		Division/Group	KK / MM / PP / QQ / SS / ZZ	D. Diggs
Cal OES	Steve Sjøtvedt		Division/Group	U / W / X	G. Engen / J. Koos (T)
PG&E	Donovan Lee		Division/Group		
State Parks	Neal Fogarty		Division/Group		
CDCR	Jeff Auzzene		Branch	FSR	T. Holliday
BLM	Jeff Tunnell		Division/Group	LIVERMORE RANCH	J. Harvey
			Division/Group	ADOBE	C. Lopez
			Division/Group		
			Branch		
			Division/Group		
			Division/Group		
5. Planning Section:			Division/Group		
Chief	Buddy Bloxham		Division/Group		
Deputy	Steve DeBenedet		Division/Group		
Resource Unit	Matt Selzer, Topher Byrd, Nick Percy, Chanece Uboldi, Arlen Summers		Branch		
Situation Unit	Todd Tuggle, Chris Ingram		Staging Area		
Documentation Unit	Rochelle Frymire		Division/Group		
Demobilization Unit	Eric Campbell, Paul Saba		Division/Group		
GISS	Stacy Stanish		Division/Group		
FBAN	Brian Newman		Division/Group		
IMET	Tom Bird		Air Operations Branch		Director: Matt Stanford
Training Tech Spec	Justin Voyson, Matt Seybert		Air Support Group Supervisor		Shem Hawkins
Crew Tech Spec	Peter Avansino		Air Tactical Group Supervisor		
			Helibase Manager		Kyle Lunsted, Sean Ryan (T)
6. Logistics Section			8. Finance/Administration Section:		
Chief	Pete Gallegos		Chief	Roger Raines, Terry Eastwood, Patrick Aguada (T)	
Deputy	Robert Cluff		Time Unit	Jesse Orozco Jr	
Supply Unit	Steve Rose		Procurement Unit	Kristine Schaefer	
Facilities Unit	Shawn Burris		Comp/Claims Unit	Fabian Mares, Alison Hesterly	
Ground Support Unit	Chris Rickert		Cost Unit	Cora-Maga-Lafaele	
Communications Unit	Scott Gamba		Hired Equipment	Chris Ricker	
Medical Unit	Kevin Fortney				
Prepared By: Name:	Buddy Bloxham	Position/Title:	PSC	Signature:	
ICS 203		Date/Time:	10/9/2020 2300 hours		



INCIDENT Weather Forecast



FORECAST NO: 12

NAME OF FIRE: GLASS

SHIFT DATE: Saturday 10/10/2020

UNIT: Sonoma-Lake-Napa

TIME AND DATE

FORECAST ISSUED: 1900hrs 10/09/2020

SIGNED:

Tom A. Bird
Incident Meteorologist
Tom Bird

WEATHER DISCUSSION: Day three of cooler and more moist conditions over the fire today. Excellent overnight recovery again this morning, with cool temperatures and high humidity at all elevations over the fire. Today a passing Pacific storm will track to our north. This will keep more clouds over the fire through the day, but other than a slight chance of drizzle, it will not produce any rain over the fire as it passes. It will be cool again today, with relative humidity staying high across the fire this afternoon. The passing cold front is weak, but it will cause the area to become somewhat breezy today. Tonight, winds stay breezy and turn from west to north to flush out the moisture. Sunday starts the warming and drying trend that will last through the upcoming week. Periods of breezy to windy offshore flow will elevate fire weather conditions, with critical conditions looking likely by Wednesday, lasting through the weekend.

WEATHER FORECAST:

WEATHER: Patchy fog and low stratus. Mostly cloudy. Cool and moist. Increased west winds.

MAX TEMPERATURES (1500ft): 60-65 hills. Near 65-70 valley floors.

MIN HUMIDITY: 55-65% Mountains. 55-65% valleys.

20 FT WINDS:

RIDGETOPS / SLOPES – West to west southwest 7-12 mph w/ gusts 15-20 mph

VALLEYS – Generally west to southwest 5 to 9 mph with gusts 15 mph.

HAINES INDEX: 4 (Low).

LAL: 1.

CHC of PCPN: 1.66667% **CHC of WETTING RAIN:** 0%.

STABILITY/INVERSION: Strong inversion, possibly holding all day. Shallow mixing, moderate transport.

FORECAST FOR NIGHT SHIFT:

Slightly cooler with good to excellent recoveries. Clouds dissipating overnight, but marine layer stratus over valleys. Minimum temperatures: 40-45 slopes and ridges to 45-50 valleys. Maximum RH: 85-95% valley bottoms to 75-85% above 2500 ft elevation. Winds: Northwest in the evening, turning north overnight. 6-12 mph valleys, 10-15 mph with gusts 20-25 mph over upper slopes and ridges.

OUTLOOK FOR SUNDAY:

Clouds eroding, becoming mostly sunny. Warming and drying. Maximum temperatures: 70-80. Minimum RH: 20-30%. Winds: North to north northeast 5-10 mph valleys. West to northwest 5-15 mph with some gusts to 20 mph over upper slopes and ridges.

EXTENDED FORECAST (MON-WED):

Continued warming and drying through the period. Periods of breezy to windy north winds. Max Temps: Warming from the middle 80s to lower 90s. Min Temps: 55-65. Min RH: 15-25%. Max RH 35-45% ridges, 45-55% valleys. Winds: Northwest to northeast 10-15 mph. Breezy overnight conditions from the north 15-25 mph.

FIRE BEHAVIOR FORECAST

FORECAST NUMBER: 12

TYPE OF FIRE: Wildfire

FIRE NAME: GLASS

OPERATIONAL PERIOD: 10/10/20 - 10/11/20

DATE ISSUED: 10/9/2020

TIME ISSUED: 1900

UNIT: SONOMA - LAKE - NAPA

SIGNED: 
Typed/printed: Brian Newman FBAN

INPUTS

WEATHER SUMMARY

Temperatures will be cooler today with an increase in daytime humidity values for all areas. West and Southwest winds 7-12 mph with gusts to 15-20 mph possible on the ridges. Good overnight humidity recovery on the upper elevations with recovery above 90% in the valleys. See IMET forecast for specific details

OUTPUTS

FIRE BEHAVIOR

GENERAL: Fuels and Fire Behavior advisory in effect for the area for above normal fine fuel loading and critical fuel moistures. See attached advisory.

Fuel moistures remain at critical levels in all fuel models and all are available to contribute to fire spread or new ignitions. Interior islands and smoldering heavy fuels may continue to see activity, even with increased humidity due to time lag moisture recovery. Humidity levels will remain elevated for the entire period at all elevations, but will see some drying overnight at elevations above 2500 feet.

These values are valid for any news starts in the area or ignitions outside the line.

ERC currently at 92% - Probability of Ignition 71%

SPECIFIC:

East Zone: Fire activity limited to isolated pockets of heat and smoldering fuels that are spread across most of the zone. Interior islands with residual heat may see some activity, but will not be a threat to the control lines.

West Zone: Smoldering heavy fuels with limited isolated heat continue to burn in this zone. Interior pockets on the upper slopes will see the highest potential for activity due to wind gusts and residual heat in the heavy fuels, but will not be a threat to control lines.

Air Operations: Limited smoke impacts, but marine and cloud layer may inhibit ability to fly.

Sunset 18:39 Sunrise 07:15

SAFETY

- Fuels outside the line remain very receptive. Be prepared to react to new starts
- Mop up should be more extensive in areas that could generate wind-blown embers across the line.

Fuels and Fire Behavior Advisory

Northern California Geographic Area

September 29, 2020

Subject: Dry offshore and northerly winds, followed by high temperatures will rapidly dry out fuels across Northern California. Extreme fire behavior and rapid to dangerous rates of spread has occurred during enhanced breezy periods accompanied with low humidity in areas clear of smoke. Extreme fire behavior will become more common as the fuel drying continues in September.

Discussion: Weeks of record temperatures during August and September, coupled with limited precipitation has expanded extreme to severe drought conditions across much of the Geographic Area. All indications show these drought conditions persisting through early October. Light precipitation that passed over the northern part of the region only lowered fire danger for a very brief period. Fires have recently shown or exhibited moderate to rapid rates of spread or generate extreme fire behavior when influence by winds. There is a high potential for extreme fire behavior to persist under a wider range of conditions as fuel continues to dry and gusty north to northeast foehn winds events become more frequent.

Difference from normal conditions: Winter precipitation was below to well below normal with 55% of normal mountain snowpack. Late spring moisture during the heart of the low-mid elevation growing season led to **above normal fine fuel loading**. Typical dry summer conditions coupled with above normal temperatures has dramatically effected fuel dryness and fire danger indices. ERC's will climb back up to between 90th to 97th percentile the next 2 weeks with some PSA's experiencing seasonal record values in temperatures. This time of year, live brush has typically low moisture levels due to normal seasonal drying but recently sampled live brush are at the at historic lows for many sampling sites.

Fuels – Low Elevation Grass Crop

Sierra Foothills Rangeland Forage Production Data

- 40 years of consistent data
- 2019-20 growing season 4th highest total
- 5 seasons of above normal in a row

Top 5 Growing Seasons	Pounds/Acres
2017-18	5514
1992-93	4696
1982-83	4630
2019-20	4420
2004-05	4410

For more information about the very unseasonable environmental conditions occurring, follow these links:

https://gacc.nifc.gov/oncc/fuelsFireDanger_Bi.php

<https://vegdril.unl.edu/Home/StateVegDRI.aspx?CA>

https://gacc.nifc.gov/oncc/fuelsFireDanger_Erc.php

https://gacc.nifc.gov/oncc/fuelsFireDanger_Thousand.php

https://gacc.nifc.gov/oncc/fuelsFireDanger_Hundred.php

<https://www.esrl.noaa.gov/psd/eddi/>

Concerns to Firefighters and the Public:

- Cured fine fuel loading below 3,000' elevation is above normal, exhibiting very rapid fire spread.
- Firefighters should be prepared for potential extreme fire behavior and dangerous or otherwise rapid rates of spread at any time of day, especially during foehn wind events.
- The potential for extreme fire activity will likely continue until enough precipitation occurs to significantly increase and maintain higher fuel moisture readings for an extended period.
- Rapid rates of spread could have a significant impact on public safety and make evacuations difficult.

Mitigation Measures:

- All local and visiting firefighters need to remain aware of current and expected weather and burning conditions and consider such information while making strategic and tactical decisions.
- Employ LCES principles (Lookouts, Communications, Escape Routes, Safety Zones).
- Review current fire potential products from Predictive Services at <https://gacc.nifc.gov/oncc/predictive/weather/index.htm> or potential Red Flag conditions from the National Weather Service and weather at <https://www.wrh.noaa.gov/fire2/cafw/>.

Area of Concern: All areas across Northern California could see very active fire behavior. The PSA numbers associated with those areas are NC01, NC02, NC03A, NC03B, NC04, NC05, NC06, NC07 and NC08.



CAL FIRE INCIDENT MANAGEMENT TEAM 3



1. INCIDENT NAME: GLASS		2. DATE PREPARED: October 09,2020		3. TIME PREPARED: 1500	
4. PREPARED BY: Damon Godden SOF1(T)		5. LEADER NAME: David Sargenti SOF1		6. OPERATIONAL PERIOD: 10/10/2020 0700 TO 10/11/2020 0700	

SAFETY MESSAGE

Complacency: A feeling of quiet pleasure or security, often while unaware of some potential danger or defect.

- **STOP COVID-19! (Wash your hands while on the fireline).**
- **Scout, size up and mitigate hazards during handline, mop up and patrol.**
- **DRIVE slowly and cautiously. (Falling trees, rolling material, utility workers).**
- **Heavy equipment and falling modules. (Small trees are dangerous too).**
- **Multiple hazards in the WUI: steep narrow roads, heavy fuel loading, wells, wooden septic tanks, long escape routes, public presence, and power lines.**
- **Communications: Ensure you have the correct clone for today's shift.**
- **Leaders attend operational briefing and brief every firefighter every shift.**
- **Weather is getting hotter and dryer. Drink water and maintain proper nutrition.**

LCES

- **Lookouts**
 - ✓ Experienced, competent, trusted.
 - ✓ Aware of decision points.
- **Communications**
 - ✓ Radio Frequencies confirmed.
- **Escape Routes**
 - ✓ More than one escape route.
- **Safety Zones**
 - ✓ Survivable without a fire shelter.

10's and 18's



13. ON A HILLSIDE WHERE ROLLING MATERIAL CAN IGNITE FUEL BELOW



INCIDENT RISK ANALYSIS ICS 215A



BRANCH	HAZARDOUS ACTIONS/CONDITIONS	MITIGATIONS/WARNINGS/REMEDIES
ALL	FATIGUE	<ul style="list-style-type: none"> Recognize signs of fatigue. Be aware of rest cycle while driving from incident. All personnel are responsible for their personal safety.
ALL	WEATHER	<ul style="list-style-type: none"> Base all actions on current and expected behavior of the fire. Be aware quiet areas could become active.
ALL	FIRE BEHAVIOR / RE-BURN	<ul style="list-style-type: none"> Prepare for slope reversal and wind shifts. Be aware of preheated canopy and potential for re-burn.
ALL	DRIVING HAZARDS	<ul style="list-style-type: none"> Watch your speeds. Drive defensively! Expect the unexpected. Watch for road degradation and dusty conditions. Be aware of debris in the roadways from rollout and suppression operations.
ALL	MOP UP AND PATROL	<ul style="list-style-type: none"> Be alert for stump holes and root cavities. Use all required PPE, including eye protection and hearing protection. Minimize exposure to smoke, rotate personnel into clean air as practical.
ALL	WILDLAND URBAN INTERFACE HAZARDS	<ul style="list-style-type: none"> Be aware of weakened structures, roadways, and driveways. Scout for propane tanks, septic tanks, and wells. Watch out for public, power lines, narrow roads and poor egress.
ALL	ENVIRONMENTAL HAZARDS	<ul style="list-style-type: none"> Poison Oak is prevalent in and around the fire area. Be aware of wildlife, snakes, and insects.
ALL	HYDRATION/NUTRITION	<ul style="list-style-type: none"> Drink water before, during and after each shift. Be alert for signs of heat stress in yourself and others.
ALL	FIRE AND DROUGHT WEAKENED TREES/SNAG HAZARDS	<ul style="list-style-type: none"> Follow Hazard Tree Safety Guidelines (IRPG p. 22). Many of the trees and limbs within the fire area and along roadways are stressed due to drought conditions and burn times.
ALL	CIVILIAN PRESENCE	<ul style="list-style-type: none"> Expect an increase in civilian traffic. Be aware that civilians continue to occupy the fire area. For current fire information line refer to the PIO message.
ALL	COMMUNICATIONS	<ul style="list-style-type: none"> Check the communication plan for frequency assignments. Be clear and concise when talking on the radio. Use human repeaters as needed.
ALL	BRIEFINGS	<ul style="list-style-type: none"> Make sure everyone gets a briefing on the plan for the day. Document this on your ICS 214.
ALL	LCES	<ul style="list-style-type: none"> Ensure that LCES is being utilized.
ALL	AIRCRAFT AWARENESS	<ul style="list-style-type: none"> Be aware of rotor wash when working near helicopters. Understand that hazardous trees may react to helicopters overhead. Monitor assigned aircraft frequencies.
ALL	HEAVY EQUIPMENT	<ul style="list-style-type: none"> Be aware of heavy equipment working in the area. Be watchful around heavy equipment, they may not see you.
ALL	COVID 19	<ul style="list-style-type: none"> Wear mask when in camp and around the public. Wash/sanitize hands often, Social distancing when applicable. Complete daily COVID screening process.
Incident Name: GLASS		Date Prepared: 10/09/2020 Prepared by: <i>Damon Godden</i> SOFI
		Operational Period: 10/10/2020-10/11/2020 0700-0700

In readiness is all

Fire and COVID-19 Briefing Checklist

Self-Awareness / Screening

- Immediately separate yourself from others.
- Notify supervisor if you or others experience:
 - Cough, more than expected
 - Shortness of breath or difficulty breathing
 - New loss of taste or smell
 - Fever
 - Sore throat
 - Chills
 - Muscle pain
- Review and follow crew and division plans to isolate, triage, and transport symptomatic personnel.

Hygiene on the Fireline

- Properly wash or sanitize your hands often, especially before and after eating or entering a public place, and after coughing or sneezing.
- Avoid handshakes and communal use items.
- Maintain a supply of hand sanitizer and hand wipes. Inform supervisor of needed resupply.
- Disinfect high touch surfaces often:
 - Radios, phones, doors, pumps, fuel cans, etc.

Social Distancing and Protective Equipment

- Initiate, practice, and remind others of social distancing.
- Conduct briefings and conversations outdoors and at least 6 feet apart.
- Utilize face coverings as a tool when practical.
- Clean or replace dirty face coverings, equipment, and PPE.

Communications

- Face coverings and social distancing complicate communications. Ensure effective sender/receiver messaging.

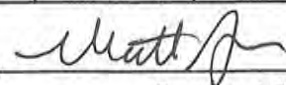
Protect yourself, your crew, and your camp!



CDC Self Check Symptoms
Data In not collected

ASSIGNMENT LIST (ICS 204 WF)

CONTROLLED UNCLASSIFIED
INFORMATION/BASIC

1. Incident Name: <p style="text-align: center; font-size: 1.2em;">GLASS</p>		2. Operational Period: Date From: 10/10/20 Date To: 10/11/20 Time From: 0700 Time To: 0700				3. Branch <p style="text-align: center; font-size: 1.2em;">2 / 4 / 6</p>		Division <p style="text-align: center; font-size: 1.2em;">E / H</p>	
4. Operations Personnel:						Page 1 of 1			
Operations Section Chief: Sean Norman / Jeremy Pierce (T)				Night Ops: Jeff Ohs / Sean Jerry (T)					
Branch Director: C. Martinell / A. Latta (12)				Branch Safety: Matt Newberry (12hr) / Mike Zimmerman (12 hr)					
Division/Group Supervisor: N. Deurloo / T. Chambon (T)				Air Attack:					
5. Resources Assigned:		** Resources Below in Bold are 12 Hour **							
Resource Identifier	ALS	LWD	Leader	Personnel	Request #	Hours	Reporting Location		
STC LNU 9142C			PETERSEN, JOE	18	E-691	0700-0700	HWY 29 X TUBBS LN.		
STC SCU 9161C			WEST, RUSSELL	17	E-70	0700-0700	HWY 29 X TUBBS LN.		
STC SCU 9162C			BLYTHE, STEVEN	18	E-1	0700-0700	HWY 29 X TUBBS LN.		
STC CZU 9171C			DELLAMONICA, JAKE	18	E-10	0700-0700	HWY 29 X TUBBS LN.		
STC AEU 9271C			BATHAM, MICHAEL	17	E-12	0700-0700	HWY 29 X TUBBS LN.		
STG TGU 9254G			JORGENSEN, DYLAN	24	C-99	0700-0700	HWY 29 X TUBBS LN.		
CRW T2 PVT LAVA FORESTRY			GARCIA, BERNARDO	20	C-70000	0700-1900	HWY 29 X TUBBS LN.		
DOZ LNU 1447			MADOLE, BYRON	4	E-497	0700-1900	HWY 29 X TUBBS LN.		
DOZ PVT E-58 - DAVIS AG			DAVIS, LEE	1	E-58	0700-1900	HWY 29 X TUBBS LN.		
W/T PVT E-222 - GLORIOSA			LARKIN, WARREN	1	E-222	0700-0700	HWY 29 X TUBBS LN.		
W/T PVT E-223 - WOVET			BENEGAS, JOSE	2	E-223	0700-0700	HWY 29 X TUBBS LN.		
W/T PVT E-224 - CGS INC			CORLEY, JOE	2	E-224	0700-0700	HWY 29 X TUBBS LN.		
FALM PVT O-285 - NORTH ZONE				2	O-285	0700-1900	HWY 29 X TUBBS LN.		
HEQB CUTTING			CUTTING, RON	1	O-153	0700-0700	HWY 29 X TUBBS LN.		
HEQB FRANSON			FRANSON, GREGORY	1	O-152	0700-0700	HWY 29 X TUBBS LN.		
FEMP SELLERS	X		SELLERS, PARTICK	1	O-295	0700-1900	HWY 29 X TUBBS LN.		
FEMP ROTHWEILER	X		ROTHWEILER, TERRE	1	O-300	0700-1900	HWY 29 X TUBBS LN.		
<i>W/T PVT E-2858 FIVE STAR</i>			<i>HUMPHREY, MARC</i>	<i>1</i>	<i>E-2858</i>	<i>0700-1900</i>	<i>HWY 29 X TUBBS LN.</i>		
<i>GRD PVT E-686</i>						<i>0700-1900</i>	<i>HWY 29 X TUBBS LN.</i>		
6. Work Assignments: Mop up 300 ft. Mitigate hazard trees. Backhaul trash and hose.									
7. Special Instructions:									
8. Communications									
Name	Ch	Function	Rx Freq	Rx Tone	Tx Freq	Tx Tone	Notes		
CDF C1 T2	1	COMMAND	151.3550	103.5(T8)	159.3000	123.0(T2)	TONE 2 MT SI HELENA		
CDF T26	5	TACTICAL	159.2925	192.8(T16)	159.2925	192.8(T16)	BRANCH 2/4/6		
CDF T20	14	AIR TO GROUND	159.3750	192.8(T16)	159.3750	192.8(T16)	**** AIR TO GROUND****		
CALCORD	15	MEDICAL	156.0750	156.7(T6)	156.0750	156.7(T6)			
AIR GUARD	16	EMERGENCY	168.6250		168.6250	110.9(T1)	EMERGENCY USE ONLY		
9. Prepared by: Name:		Matt Selzer			RESL		Signature: 		
ICS 204		Date/Time: 10/9/2020		2200		Personnel Count: 148			

ASSIGNMENT LIST (ICS 204 WF)

CONTROLLED UNCLASSIFIED
INFORMATION//BASIC

1. Incident Name: <p style="text-align: center; font-weight: bold;">GLASS</p>	2. Operational Period: Date From: 10/10/20 Date To: 10/11/20 Time From: 0700 Time To: 0700	3. Branch Division 5 / 7 / 9 / 10 KK / MM / PP / QQ / SS / ZZ
---	---	---

Page 1 of 1

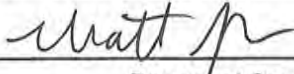
4. Operations Personnel:	
Operations Section Chief: Sean Norman / Jeremy Pierce (T) Branch Director: M. Turberville Division/Group Supervisor: D. Diggs	Night Ops: Jeff Ohs / Sean Jerry (T) Branch Safety: Chris Gerking Air Attack:

5. Resources Assigned:		** Resources Below in Bold are 12 Hour **					
Resource Identifier	ALS	LWD	Leader	Personnel	Request #	Hours	Reporting Location
T/F XSN 2399			PICCININI, JACK	21	E-109	0700-0700	MARIA CARILLO SCHOOL
T/F GLASS 101**					GLASS #101	0700-0700	MARIA CARILLO SCHOOL
CRW1 LNU DELTA 2			GONZALEZ, TONY	16 +/-	C-53	0700-0700	MARIA CARILLO SCHOOL
W/T PVT E-106 - COLEMAN			DUTCHER, JUSTIN	2	E-106	0700-0700	MARIA CARILLO SCHOOL
FALM PVT O-324 - SKYLAKE				2	O-324	0700-1900	MARIA CARILLO SCHOOL

6. Work Assignments:
 Hold fire within established control lines.
 Perform Tactical Patrol.
 Assist with repopulation.
 Backhaul trash and hose.

7. Special Instructions:

8. Communications							
Name	Ch	Function	Rx Freq	Rx Tone	Tx Freq	Tx Tone	Notes
CDF C1 T2	1	COMMAND	151.3550	103.5(T8)	159.3000	123.0(T2)	TONE 2 MT SI HELENA
VTAC11	7	TACTICAL	151.1375	156.7(T6)	151.1375	156.7(T6)	BRANCH 5/7/9/10
CDF T20	14	AIR TO GROUND	159.3750	192.8(T16)	159.3750	192.8(T16)	**** AIR TO GROUND****
CALCORD	15	MEDICAL	156.0750	156.7(T6)	156.0750	156.7(T6)	
AIR GUARD	16	EMERGENCY	168.6250		168.6250	110.9(T1)	EMERGENCY USE ONLY

9. Prepared by: Name: Matt Selzer RESL Signature: 

ICS 204 Date/Time: 10/9/2020 2200 Personnel Count: 41

ASSIGNMENT LIST (ICS 204 WF)

CONTROLLED UNCLASSIFIED
INFORMATION//BASIC

1. Incident Name: <p style="text-align: center; font-weight: bold;">GLASS</p>	2. Operational Period: Date From: 10/10/20 Date To: 10/11/20 Time From: 0700 Time To: 0700	3. Branch Division <p style="text-align: center; font-weight: bold;">FSR LIVERMORE RANCH</p>
---	---	---

4. Operations Personnel: Page 1 of 2

Operations Section Chief: Sean Norman / Jeremy Pierce (T)	Night Ops: Jeff Ohs / Sean Jerry (T)
Branch Director: T. Holliday	Branch Safety:
Division/Group Supervisor: J. Harvey	Air Attack:

5. Resources Assigned: ** Resources Below in Bold are 12 Hour **

Resource Identifier	ALS	LWD	Leader	Personnel	Request #	Hours	Reporting Location
CRW2 C-700002 - WOODPECKER			FOX, COREY	19	C-70002	0700-1900	MONTESOL RANCH
DOZ PVT E-60 - DVBE-SBE ENT			DUNLAP, JIM	2	E-60	0700-1900	MONTESOL RANCH
DOZ PVT E-61 - MTAC LOGISTICS			WANZER, TONY	2	E-61	0700-1900	MONTESOL RANCH
DOZ PVT E-92 - TRAVIS			WADE, RYAN	3	E-92	0700-1900	MONTESOL RANCH
DOZ PVT E-190 - COLEMAN → <i>ADDBE</i>			COLEMAN, TRAVIS	2	E-190	0700-1900	MONTESOL RANCH
W/T PVT E-55 - R.T. EXC			GRAY, KEVIN	2	E-55	0700-1900	MONTESOL RANCH
W/T PVT E-288 - FIVE STAR → <i>E/H</i>			HUMPHREY, MARC	1	E-288	0700-1900	MONTESOL RANCH
W/T PVT E-434 - DUDLEYS EXC			STUGELMEYER, JOHN	1	E-434	0700-1900	MONTESOL RANCH
MAST PVT E-581 - MOBLEY			MOBLEY, DONNEY	1	E-581	0700-1900	MONTESOL RANCH
MAST PVT E-582 - GARMAN			BOAT, WEST	1	E-582	0700-1900	MONTESOL RANCH
MAST PVT E-587 - LIST RESOURC			LIST, JOHN	1	E-587	0700-1900	MONTESOL RANCH
EXC PVT E-598 - HARD ROCK			FARMER, BRAD	1	E-598	0700-1900	MONTESOL RANCH
GRD PVT E-667			COLEMAN, TRACY	1	E-667	0700-1900	MONTESOL RANCH
HEQB JOHNSON			JOHNSON, GARY	1	O-291	0700-1900	MONTESOL RANCH
HEQB ETULAIN			ETULAIN, FRANK	1	O-154	0700-1900	MONTESOL RANCH
HEQB WRENN			WRENN, WILLIAM	1	O-510	0700-1900	MONTESOL RANCH
READ+						0700-1900	MONTESOL RANCH
READ+						0700-1900	MONTESOL RANCH

6. Work Assignments:
Implement the FSR Plan.

7. Special Instructions:

8. Communications

Name	Ch	Function	Rx Freq	Rx Tone	Tx Freq	Tx Tone	Notes
CDF C1 T2	1	COMMAND	151.3550	103.5(T8)	159.3000	123.0(T2)	tone 2 MT St HELENA
CDF T24	10	TACTICAL	151.3325	192.8(T16)	151.3325	192.8(T16)	LIVERMORE FSR
CDF T20	14	AIR TO GROUND	159.3750	192.8(T16)	159.3750	192.8(T16)	**** AIR TO GROUND****
CALCORD	15	MEDICAL	156.0750	156.7(T6)	156.0750	156.7(T6)	
AIR GUARD	16	EMERGENCY	168.6250		168.6250	110.9(T1)	EMERGENCY USE ONLY

9. Prepared by: Name: Matt Selzer RESL

Signature: Personnel Count: 40

ICS 204 Date/Time: 10/9/2020 2200

ASSIGNMENT LIST (ICS 204 WF)

CONTROLLED UNCLASSIFIED
INFORMATION//BASIC

1. Incident Name: <p style="text-align: center; font-size: 1.2em;">GLASS</p>		2. Operational Period: Date From: 10/10/20 Date To: 10/11/20 Time From: 0700 Time To: 0700				3. Branch <p style="text-align: center; font-size: 1.2em;">FSR</p>		Division <p style="text-align: center; font-size: 1.2em;">ADOBE</p>	
4. Operations Personnel:						Page 1 of 2			
Operations Section Chief: Sean Norman / Jeremy Pierce (T)				Night Ops: Jeff Ohs / Sean Jerry (T)					
Branch Director: T. Holliday				Branch Safety:					
Division/Group Supervisor: C. Lopez				Air Attack:					
5. Resources Assigned:		** Resources Below in Bold are 12 Hour **							
Resource Identifier	ALS	LWD	Leader	Personnel	Request #	Hours	Reporting Location		
CRW2 C-70001 - LOMAKATSI			MAYA, BRAULIO	18	C-70001	0700-1900	DP 50		
DOZ PVT E-57 - FIRE IRON			DOCKINS, ANTHONY	2	E-57	0700-1900	DP 50		
DOZ PVT E-217 - PALMER			PEARSON, ROBERT	2	E-217	0700-1900	DP 50		
DOZ PVT E-259 - BRAD INGRAM			TORRES, GIOVANNI	2	E-259	0700-1900	DP 50		
DOZ PVT E-386 - KDK GENERAL			DREW, KENNY	2	E-386	0700-1900	DP 50		
DOZ PVT E-413 - ROBINSON			ROBISON, KEVIN	2	E-413	0700-1900	DP 50		
W/T PVT E-290 - AWB INC			MILLS, EDWARD	1	E-290	0700-1900	DP 50		
W/T PVT E-291 - FIRELINE			HURL, RUSSELL	2	E-291	0700-1900	DP 50		
W/T PVT E-431 - TRAHAN ENT,			LATHAM, ROBERT	1	E-431	0700-1900	DP 50		
MAST PVT E-557 - ROBINSON			PETERSON, LARRY	1	E-557	0700-1900	DP 50		
EXC PVT E-558 - MCCLERAN			MCLERAN, RICHARD	1	E-558	0700-1900	DP 50		
EXC PVT E-677 - INGRAM			ESCALERA, MARK	1	E-677	0700-1900	DP 50		
EXC PVT E-684 - AAA EQUIP			HATLER, TIM	1	E-684	0700-1900	DP 50		
GRD PVT E-686 - FORTNER → E/A				1 +/-	E-686	0700-1900	DP 50		
HEQB HEIL			HEIL, DAVID	1	O-34	0700-1900	DP 50		
HEQB MARSHALL			MARSHALL, DAN	1	O-155	0700-1900	DP 50		
HEQB VALDIVIA			VALDIVIA, JUAN	1	O-466	0700-1900	DP 50		
TFLD NORRBOM DEMOBES			NORRBOM, BOB	1	O-10025	0700-1900	DP 50		
6. Work Assignments: Implement the FSR Plan.									
7. Special Instructions:									
8. Communications									
Name	Ch	Function	Rx Freq	Rx Tone	Tx Freq	Tx Tone	Notes		
CDF C1 T2	1	COMMAND	151.3550	103.5(T8)	159.3000	123.0(T2)	TONE 2 MT SI HELENA		
VTAC14	9	TACTICAL	159.4725	156.7(T6)	159.4725	156.7(T6)	ADOBE FSR		
CDF T20	14	AIR TO GROUND	159.3750	192.8(T16)	159.3750	192.8(T16)	**** AIR TO GROUND****		
CALCORD	15	MEDICAL	156.0750	156.7(T6)	156.0750	156.7(T6)			
AIR GUARD	16	EMERGENCY	168.6250		168.6250	110.9(T1)	EMERGENCY USE ONLY		
9. Prepared by: Name:		Matt Selzer			RESL		Signature:		
ICS 204		Date/Time: 10/9/2020 2200			Personnel Count: 41				

ASSIGNMENT LIST (ICS 204 WF)

CONTROLLED UNCLASSIFIED
INFORMATION//BASIC

1. Incident Name: <p style="text-align: center; font-size: 1.2em;">GLASS</p>	2. Operational Period: Date From: 10/10/20 Date To: 10/11/20 Time From: 0700 Time To: 0700	3. Branch Division <p style="text-align: center; font-size: 1.2em;">FSR ADOBE</p>
--	---	---

Page 2 of 2

4. Operations Personnel:	
Operations Section Chief: Sean Norman / Jeremy Pierce (T)	Night Ops: Jeff Ohs / Sean Jerry (T)
Branch Director: T. Holliday	Branch Safety:
Division/Group Supervisor: C. Lopez	Air Attack:

5. Resources Assigned:		** Resources Below in Bold are 12 Hour **					
Resource Identifier	ALS	LWD	Leader	Personnel	Request #	Hours	Reporting Location
READ+ O-355				1	O-355	0700-1900	DP 50
READ+ KIMSEY O-514			KIMSEY, CHRIS	1	O-514	0700-1900	DP 50
FSRS+ READ GREEN O-351			GREEN, KATE	1	O-351	0700-1900	DP 50
FSRS+ ZULUAGA O-520			ZULUAGA, YANIK	1	O-520	0700-1900	DP 50
DOT PUT E-190 COLEMAN			COLEMAN, TRAVIS	2	E-190	0700-1900	DP 50
W/T PUT E-688 PERWARDS			ORTA, ROB	1	E-688	0700-1900	DP 50
FOBSIT/NESSA O-382			NESSA, JOEL	1	O-382	0700-1900	DP 50
FOBS MCBRIDZ O-513			MCBRIDZ, IAN	1	O-513	0700-1900	DP 50
HEQB O-350				1	O-350	0700-1900	DP 50

6. Work Assignments:
Implement the FSR Plan.

7. Special Instructions:

8. Communications							
Name	Ch	Function	Rx Freq	Rx Tone	Tx Freq	Tx Tone	Notes
CDF C1 T2	1	COMMAND	151.3550	103.5(T8)	159.3000	123.0(T2)	TONE 2 MT SI HELENA
VTAC14	9	TACTICAL	159.4725	156.7(T6)	159.4725	156.7(T6)	ADOBE FSR
CDF T20	14	AIR TO GROUND	159.3750	192.8(T16)	159.3750	192.8(T16)	**** AIR TO GROUND****
CALCORD	15	MEDICAL	156.0750	156.7(T6)	156.0750	156.7(T6)	
AIR GUARD	16	EMERGENCY	168.6250		168.6250	110.9(T1)	EMERGENCY USE ONLY

9. Prepared by: Name: Matt Selzer RESL Signature:

ICS 204 Date/Time: 10/9/2020 2200 Personnel Count: 0

AIR OPERATIONS SUMMARY ICS-220

Incident Name / Number
GLASS / CA-LNUJ-015947

Sunrise 714
StartUp 744
Cutoff 1812
Sunset 1842

General Remarks, Safety Notes, Hazards, Air Operations Special Equipment, etc.
TRACK ALL DIPSITE LOCATIONS / NUMBER OF DIPS / GALLONS TAKEN.
TRACK ALL DROP LOCATIONS / NUMBER OF DROPS / GALLONS DROPPED
ALL GPS DATA TO BE COLLECTED IN DEGREES. MINUTES. DECIMAL MINUTES FORMAT.

Time Prepared
1400

Date Prepared
Friday, October 9, 2020

Prepared By
Matt Stanford

Shutdown
1912

Operational Period - Date
Saturday October 10, 2020

Operational Period - Time
0700-2100

Helibase Information
Name 7M HELIBASE
Latitude 38 43.89
Longitude 122 33.79

TFR Information
Request #
Radius: Polygon NM
Altitude: MSL

Rescue Ship Information
Dav.Hoist
Name C104
Phone
Make/Model UH1H
Location 7M HELIBASE
Request Procedure for These Aircraft:
Incident Communications
See Medical Plan For Additional Info

Name
Latitude
Longitude
(use page 2 if needed)

Centerpoint:
NOTAMS: 0/6373
Frequency 132.6750
<http://tfr.faa.gov/tfr2/list.html>

Trainee
Name
Phone

Frequencies	RX	Tone	TX	Tone	AM / FM	Position	Name	Phone
COMMAND	151.3650	103.5(T18)	159.3000	123.0(T12)	FM	AOBD	Matt Stanford	951.545.8205
AIR / GROUND - TACTICAL	159.3750	192.8(T16)	159.3750	192.8(T16)	FM	ASGS		
AIR/AIR ROTARY WING	132.6750		132.6750		AM	HEBM	Kyle Lunsied	707.372.2609
AIR TACTICS	167.4250		167.4250		FM			
BRIEFING	123.8250		123.8250		AM			
TOLC	123.0250		123.0250		AM			
DECK	163.1000		163.1000		FM			
CALCORD - MEDICAL	166.0750	166.7 (6)	166.0750	166.7 (6)	FM			
AIRGUARD - Emergency Only	168.6250		168.6250	110.9 (1)	FM			

HELICOPTERS (Use page 2 if Needed)

FAA #	Type	Make/Model	Helibase	Avail	Start	Remarks	FAA #	Type	Make/Model	Helibase	Avail	Start	Remarks
N805PJ	1	UH60	7M	0800	0800								
							104	2	UH1H	7M	0800	0800	Hoist / Helibase
							N9122Z	2	Bell 212	7M	0800	0800	
							N117DR	2	UH1H	7M	0800	0800	
							N617AC	3	Bell 407	7M	0800	0800	HLCO

FIXED WING (Use Page 2 if Needed)

FAA #	Type	Make/Model	Base	Avail	Start	Remarks	FAA #	Type	Make/Model	Base	Avail	Start	Remarks

Matt Stanford



ICS 205 - INCIDENT RADIO COMMUNICATIONS PLAN

1. Incident Name: **GLASS 5**
 2. Date/Time Prepared: **10/09/2020 1930**
 3. Operational Period: **10/10/2020 0700** to **10/11/2020 0700**

4. Communications		GLASS 5						
Ch#	Function	Name	Assigned To	Rx Freq	Rx Tone	Tx Freq	Tx Tone	Notes
1	COMMAND	CDF C1 T2	INCIDENT WIDE	151.3550	103.5(T8)	159.3000	123.0(T2)	ZONE 2 MT SI HELENA
2	COMMAND	CDF C1 T15	INCIDENT WIDE	151.3550	103.5(T8)	159.3000	162.2(T15)	ZONE 15 MT SONOMA
3								
4	TACTICAL	CDF T1	DIV A/D/L/N	151.2575	192.8(T16)	151.2575	192.8(T16)	BRANCH 2/4/6
5	TACTICAL	CDF T26	DIV E/H	159.2925	192.8(T16)	159.2925	192.8(T16)	BRANCH 2/4/6
6	TACTICAL	CDF T30	DIV J	151.3925	192.8(T16)	151.3925	192.8(T16)	BRANCH 2/4/6
7	TACTICAL	VTAC11	DIV KK/MM/PP/QQ/SS/ZZ	151.1375	156.7(T6)	151.1375	156.7(T6)	BRANCH 5/7/9/10
8	TACTICAL	CDF T28	DIV UW/X	151.1825	192.8(T16)	151.1825	192.8(T16)	BRANCH 5/7/9/10
9	TACTICAL	VTAC14	ADOBE SUPP	159.4725	156.7(T6)	159.4725	156.7(T6)	ADOBE FSR
10	TACTICAL	CDF T24	LIVERMORE SUPP	151.3325	192.8(T16)	151.3325	192.8(T16)	LIVERMORE FSR
11	TACTICAL	CDF T25	SUPPRESSION REPAIR	159.2775	192.8(T16)	159.2775	192.8(T16)	SUPPRESSION REPAIR
12								
13								
14	AIR TO GROUND	CDF T20	INCIDENT WIDE	159.3750	192.8(T16)	159.3750	192.8(T16)	**** AIR TO GROUND****
15	MEDICAL	CALCORD	INCIDENT WIDE	156.0750	156.7(T6)	156.0750	156.7(T6)	
16	EMERGENCY	AIR GUARD	INCIDENT WIDE	168.6250		168.6250	110.9(T1)	EMERGENCY USE ONLY
17								
18								
19								
20	EMERGENCY	AIR GUARD	INCIDENT WIDE	168.6250		168.6250	110.9(T1)	EMERGENCY USE ONLY

5. Special Instructions
 CURRENT CLONE FOR THE GLASS INCIDENT IS "GLASS 5"

6. Prepared by (Communications Unit Leader): Name: **Scott Gamba**
 Signature: 
 Date/Time: **10/9/2020 1930**

  MEDICAL PLAN	1. INCIDENT NAME GLASS	2. DATE PREPARED 10/09/20	3. TIME PREPARED 1800	4. OPERATIONAL PERIOD 10/10/2020-10/11/2020 0700-0700
--	----------------------------------	------------------------------	--------------------------	---

5. INCIDENT MEDICAL AID STATIONS

MEDICAL AID STATIONS	LOCATION	PARAMEDICS	
		YES	NO
CAL-MAT Team with MD onsite	ICP	XX	

6. TRANSPORTATION

A. Air Ambulances

NAME	ADDRESS	PHONE	PARAMEDICS	
			YES	NO
Reach 6	4615 Highland Springs Rd Lakeport	St Helena ECC	XX	
Cal Star	Concord	St Helena ECC	XX	
Hoist Day C-104 / Hoist Night C-822	Cobb/Redding	St Helena ECC	XX	
CHP H-30 and H-32 Avail 24 hr /Day Hoist only	Napa Airport	St Helena ECC	XX	

B. Ground Ambulances

AMR M-73 (Napa) With Incident Comms	St Helena HQ	707-337-7811	XX	
AMR (Sonoma)	Multiple units in system	St Helens ECC	XX	

7. HOSPITALS

NAME	ADDRESS	TRAVEL TIME		PHONE	HELIPAD		BURN CENTER	
		AIR	GRND		YES	NO	YES	NO
Queen of the Valley Hospital Level 3 Trauma	1000 Trancas St Napa 38 19.43 N / -122 17.83 W	8 Mins	31 Mins	707-252-4411	XX			XX
Santa Rosa Mem Hospital Level 2 Trauma	1165 Montgomery Dr Santa Rosa 38 26.63 N / -122 42.02 W	5 Mins	38 Mins	707-546-3210	XX			XX
U.C. Davis Hospital Level 1 Trauma/Burn Center	2315 Stockton Blvd Sacramento 38 33.28 N / -122 27.35 W	30 Mins	80 Mins	916-734-5669	XX		XX	
Kaiser Santa Rosa Medical Center	401 Bicentennial Way Santa Rosa		5 Mins	707-393-4000		XX		XX

8. MEDICAL EMERGENCY PROCEDURES

LINE EMERGENCY: Crew Supervisor to contact Division Supervisor with patient complaint/condition and location.

- Division Supervisor contacts:
 - FEMT / FEMP
 - Communications Unit
- Communication Unit will clear command channel for emergency traffic; as needed for Minor/Major Emergency
- Communications will switch all emergency traffic to CALCORD as needed or requested.
- Communications Unit contacts:
 - Medical Unit
 - Safety
 - Operations
- Division Supervisor will run medical emergency on CALCORD.
- Medical Unit will:
 - Dispatch air/ground ambulance to as appropriate.
 - If necessary, after patient pickup, dispatch ambulance to helibase for transportation.
 - Notify receiving hospital of injury status.

CAMP EMERGENCY: Contact Medical Unit with patient complaint/condition and location. Medical Staff will respond to stabilize incident.

INJURY REPORTING INFORMATION

NATURE OF INJURY _____

LOCATION OF PATIENT _____

TRANSPORTATION REQUESTED BY: AIR ___ GROUND ___

POINT OF PICKUP _____

LAT _____ LONG _____

PATIENT UNIT ID _____

REMINDER: DO NOT GIVE PT NAME OVER RADIO

IS AN EMT WITH PATIENT: YES ___ NO ___

AGE _____

SEX: MALE ___ FEMALE ___

ALL EMERGENCIES---Secure the area and identify witnesses for later investigation. Keep an accurate log of events.

Medical Unit (951) 264-9340

ICS 206 8-78	9. PREPARED BY (MEDICAL UNIT LEADER) Kevin Fortney MEDL <i>[Signature]</i>	10. REVIEWED BY (SAFETY OFFICER) David Sargenti SOF1 <i>[Signature]</i>
--------------	---	--



TRAINING SPECIALIST MESSAGE

TRAINERS/EVALUATORS:

Beat the Rush!!

If as much work as possible has been completed in the position task book, you are strongly encouraged to take advantage of your time in camp and conduct the training close-out with the TNSP. It is not necessary to wait until you demob.

TRAINEES:

Tomorrow, October 11th at 1200 hours is the deadline to close out your active training assignment with the TNSP. In order to receive documented credit for your training assignment, you must close out with the Training Specialist.

Bring the following to the "exit interview"

- Your properly initiated Position Task Book
- Completed and signed ICS 225 Performance Evaluation
- Completed and signed Evaluation Record

Forms are available at the Training Desk

Remember: No documentation- it didn't happen!

Justin Voyson TNSP 661-547-8629

A handwritten signature in black ink, appearing to read "Justin Voyson".

In readiness is all



INCIDENT MANAGEMENT TEAM 3



DEMOBILIZATION MESSAGE

**Glass Incident
CA-LNU-015947**

We appreciate your efforts during this incident and want to make sure that we get you to your next destination safely and efficiently. When we begin demobilization, a Tentative Demobilization List will be posted in several places around base camp, including the briefing area and the eating area. If you are on this list, please adhere to the following:

SHOW UP AT THE DESIGNATED TIME

- Show up at the designated time.
- Do not show up early.
- Do not show up late.

A demobilization schedule has been prepared in careful coordination with all essential demobilization functions. Not following the demobilization schedule can have significant negative impacts on the Demobilization Unit staff and all other resources scheduled for demobilization. We do not want you or any other resources to have unnecessary delays. Please adhere to your scheduled demobilization time.

BE PREPARED FOR A RE-ASSIGNMENT

There may be other incidents in the state that are in need of resources. There is a possibility that some of the resources released from this incident will be immediately assigned to another one. Please make sure you are properly supplied, rested, and nourished while waiting for your designated demobilization time.

BE THOROUGH AND EFFICIENT

Demobilization begins and ends at the Demobilization Unit. Please follow the instructions given to you when starting the demobilization process. Returning to the Demobilization Unit with a complete and accurate Demobilization Check-Out (ICS-221) form will help prevent any unnecessary delays and ensure you are shown as available for future assignments. Unforeseen delays can occur during the demobilization process, such as mechanical issues discovered while at Ground Support. Plan to visit the Time Unit towards the end of the demobilization process in order to provide an accurate accounting of your time.

[Handwritten signature] DMOB

In readiness is all



PUBLIC INFORMATION SECTION



Incident Information Line: (707) 967-4207
Incident Media Line: (707) 967-4208

Incident Updates:
tinyurl.com/glassfire2020

STATUS	
Incident Start Date: 9/27/2020	Incident Start Time: 3:50 AM
Cause: Under Investigation	Acres:
Containment:	Total Personnel:

MEDIA – The California State Penal Code Section 409.5(d) allows the news media to enter scenes of disaster, riot or civil disturbance. Properly identified members of the news media should not be restricted from entering locations specified within the code. However, this does not include crime scenes, private property and does not imply that the news media may interfere with incident operations while they are in the areas of concern. More information can be found [here](#).

CAL FIRE SOCIAL MEDIA POLICY – When assigned to a CAL FIRE incident, you will adhere to the CAL FIRE Social Media Policy, Section 0691. You can find further information about the CAL FIRE Social Media Policy [here](#).

PHOTOGRAPHS AND VIDEOS OF INCIDENT – We are in a new era of media. Media no longer means news/broadcast industry, but now refers to anyone that has the capability to shoot video, photographs and post them onto social media sites in a matter of minutes. Unfortunately, we have seen some instances of photographs or videos that have depicted unsafe, unprofessional or embarrassing circumstances which are a serious breach of ethics. When this happens, it reflects poorly on all that are attached to this incident. Posting an inappropriate video, photo or blog comment could expose oneself to unwanted ramifications. It may be unsafe to shoot photos or video and a firefighter who is concentrating on a camera loses their situational awareness.

The Public Information Office would like copies of the video and pictures that you safely took while not in an emergency situation, fire suppression activity or in an overhead assignment. Bring your video and pictures to the Public Information trailer; they will be reviewed and possibly uploaded to our many CAL FIRE social media sites. Remember, we don't want photographs or videos that depict unsafe, unprofessional or embarrassing circumstances, which are a serious breach of ethics.

LOST AND FOUND – The Information Section will manage lost and found items for the incident. If you have lost an item please leave your contact information and what you have lost at the Information Section. If you have found an item on the incident, bring the item to the Information Section with your contact information as well. All items left in Lost and Found will be turned over to the local CAL FIRE Sonoma Lake Napa Unit.

MAIL SERVICE – PIO will only be receiving mail/ packages until Sunday 10/11/2020. If you are having something delivered and it's expected to arrive after Sunday, you can contact the Fairground's keeper at the front office for assistance.



FINANCE SECTION MESSAGE



FINANCE SECTION is located in the “Saralee and Richard’s Barn” Building. Enter from Redwood Plaza.

CAL FIRE TIME UNIT (Personnel and Hired Equipment)

- **CAL FIRE PERSONNEL** – make sure you have started your eFC-33’s and update after each shift. Please make sure Epay schedules are up to date.
- **HIRED EQUIPMENT SUPPLIERS** – Check in with the Time Unit and drop off your agreements.
- **SHIFT TICKET BOOKS** - for line supervisors are available in the Time Unit (agency personnel only).

DIVISION / GROUP - LINE SUPERVISORS

- Please make sure to turn in hired equipment shift tickets at the end of each shift.

COMP / CLAIMS

- **Damage Claims** (suppression, property, vehicle), 3 ways to report:
 - QR code at the bottom left
 - ICS-213. We will need location, description of damages, and your contact information.
 - LNU.Incidentclaims@fire.ca.gov
 - **Contact Number: (949) 680-8892**
- **WATER SOURCE WORKSHEET:** Please complete the worksheet for water sources used. You can also use the QR code at the bottom right.
- Please report all injuries and suppression damage to the Comp / Claims, no matter how minor.

CAL OES REPRESENTATIVE

- Located in OES Command Unit on trailer row near Finance.

Roger Raines, FSC1
 Terry Eastwood, FSC1
 Pat Aguada, FSC1



WATER USAGE

DAMAGE CLAIM REPORT





ATTN: Federal Resources (specifically Federal Contracted Resources/ADs)

RE: Virtual Finance Support

If you are assigned to a CAL FIRE managed incident, you have noticed that there is no “federal” time unit on site. We have developed a virtual finance section to provide you with your invoices/time sheets. We will need for you to **scan and email** your documents to the R5.CalFire.Support@firenet.gov email address. (If you do not have a “scanning” app on your phone and/or computer you may visit the clerical trailer. If no clerical trailer is available check in with the Finance Section for assistance.) In the subject line enter:

TIME - Resource # - Company/Person Name – Attachment description - Fire Name/Number

Contract Crew/Equipment:

We need for you to send us the following information (even if you have submitted it to the CAL FIRE finance unit):

- Contact name, phone number, and email for on-site “leader”
- Resource Order
- Contract (Pages 1-2 and any additional pages referencing equipment/resource information)
- Crew Manifest
- Inspection (if one was done)
- Shift Tickets (signed by you and your incident supervisor) / CTRs (signed by your incident supervisor)

Administratively Determined (AD) Resources:

We need for you to send us the following information:

- Contact phone number and email
- Resource Order
- Casual Hire Form
- CTRs (signed by your incident supervisor)

Federal Employees:

As of right now, we are not planning to create OF-288s for Federal “regular” employees. Each of you can utilize your CTRs as your backup documentation for submitting your time sheets.

IF, however you require an OF-288, we will do our best to accommodate your needs. If you are claiming Hazard Pay, just like always, you must provide a justification for the claim (“H=Hazard”) is NOT enough. Use “action verbs” to explain what/why you are claiming the hazard.

WHEN YOU ARE CLOSE TO DEMOB:

- Give Finance a “Courtesy Email” 1-2 days prior to make sure all your documents have been received.
- Submit all time documentation (including travel home) ahead of demob.
- Send an email the morning of your demob to the Support email so the demob process can be started from the virtual finance group.

EMAIL: R5.CalFire.Support@firenet.gov

Please **do not wait** until the end of your assignment to get us your information. Since we are virtual, the process will take additional time.



\$HIFT TICKET EXAMPLE

Finance Section



EMERGENCY SHIFT TICKET and EVALUATION FORM						Contractor Name																																					
The responsible Government Officer will complete this form each shift.						Fireline Builders																																					
Incident or Project Name GLASS		Incident Number CALNU 015947		Request Number E # Here		Operator #1 Bob Smith	Operator #2 Jeff Smith																																				
Agreement Number Obtain from vendor's agreement						Operator Furnished By: <input checked="" type="checkbox"/> Contractor <input type="checkbox"/> Government																																					
Equipment Make CAT			Equipment Model / Type D6N, Type II E			Operating Supplies Furnished By: <input checked="" type="checkbox"/> Contractor <input type="checkbox"/> Government																																					
Serial Number 6LN3344			Licence Number			Equipment Status <input checked="" type="checkbox"/> Inspected <input checked="" type="checkbox"/> Under Agreement																																					
Equipment Use (Circle) Hours / Days / Miles						Released by Government <input type="checkbox"/> Withdrawn by Contractor																																					
Date Mo / Day	Start	Stop	Work	Assignment		Remarks/Comments ** NO DAMAGE / NO CLAIMS																																					
8/17	0700	2400	17	Division B																																							
8/18	0001	0700	7	Division B																																							
Vendor Rating						Govt. Rep. Name and Position - PRINT Mike Weber Div. A																																					
<table border="1"> <tr> <td>Poor*</td> <td>Avg.</td> <td>Good</td> <td>Exc.</td> <td colspan="2">N/A</td> </tr> </table>						Poor*	Avg.	Good	Exc.	N/A		Govt. Rep. Signature <i>Mike Weber</i>																															
Poor*	Avg.	Good	Exc.	N/A																																							
<table border="1"> <tr> <td>Met Performance Expectations</td> <td></td> <td></td> <td></td> <td></td> <td></td> </tr> <tr> <td>Equipment in Safe Working Condition</td> <td></td> <td></td> <td></td> <td></td> <td></td> </tr> <tr> <td>Operator Skill Level</td> <td></td> <td></td> <td></td> <td></td> <td></td> </tr> <tr> <td>Operates Safely</td> <td></td> <td></td> <td></td> <td></td> <td></td> </tr> <tr> <td>Operator's Cooperation Level</td> <td></td> <td></td> <td></td> <td></td> <td></td> </tr> <tr> <td>Overall Performance</td> <td></td> <td></td> <td></td> <td></td> <td></td> </tr> </table>						Met Performance Expectations						Equipment in Safe Working Condition						Operator Skill Level						Operates Safely						Operator's Cooperation Level						Overall Performance						Contractor Signature <i>Bob Smith</i>	
Met Performance Expectations																																											
Equipment in Safe Working Condition																																											
Operator Skill Level																																											
Operates Safely																																											
Operator's Cooperation Level																																											
Overall Performance																																											
						Date 07/20/20 Time 0800																																					
* NOTE: Any rating of POOR requires an explanation in Comment Section.						CALFIRE 297 (Rev 3-2011)																																					
**Final evaluation or for more documentation, use an ICS Form 230 or equivalent.																																											
Pink - Finance		Blue - Home Unit HE Coordinator		Yellow - Vendor		White - Govt Representative																																					

EMERGENCY SHIFT TICKET and EVALUATION FORM						Contractor Name																																					
The responsible Government Officer will complete this form each shift.						Fireline Builders																																					
Incident or Project Name GLASS		Incident Number CALNU 015947		Request Number E # Here		Operator #1 Bob Smith	Operator #2																																				
Agreement Number Obtain from vendor's agreement						Operator Furnished By: <input checked="" type="checkbox"/> Contractor <input type="checkbox"/> Government																																					
Equipment Make CAT			Equipment Model / Type D6N, Type II E			Operating Supplies Furnished By: <input checked="" type="checkbox"/> Contractor <input type="checkbox"/> Government																																					
Serial Number 6LN3344			Licence Number			Equipment Status <input checked="" type="checkbox"/> Inspected <input checked="" type="checkbox"/> Under Agreement																																					
Equipment Use (Circle) Hours / Days / Miles						Released by Government <input type="checkbox"/> Withdrawn by Contractor																																					
Date Mo / Day	Start	Stop	Work	Assignment		Remarks/Comments ** NO DAMAGE / NO CLAIMS																																					
8/18	0001	0700	7	Off Shift																																							
8/18	0701	1900	12	Division B																																							
8/18	1901	2400	5	Off Shift																																							
Vendor Rating						Govt. Rep. Name and Position - PRINT Mike Weber Div. A																																					
<table border="1"> <tr> <td>Poor*</td> <td>Avg.</td> <td>Good</td> <td>Exc.</td> <td colspan="2">N/A</td> </tr> </table>						Poor*	Avg.	Good	Exc.	N/A		Govt. Rep. Signature <i>Mike Weber</i>																															
Poor*	Avg.	Good	Exc.	N/A																																							
<table border="1"> <tr> <td>Met Performance Expectations</td> <td></td> <td></td> <td></td> <td></td> <td></td> </tr> <tr> <td>Equipment in Safe Working Condition</td> <td></td> <td></td> <td></td> <td></td> <td></td> </tr> <tr> <td>Operator Skill Level</td> <td></td> <td></td> <td></td> <td></td> <td></td> </tr> <tr> <td>Operates Safely</td> <td></td> <td></td> <td></td> <td></td> <td></td> </tr> <tr> <td>Operator's Cooperation Level</td> <td></td> <td></td> <td></td> <td></td> <td></td> </tr> <tr> <td>Overall Performance</td> <td></td> <td></td> <td></td> <td></td> <td></td> </tr> </table>						Met Performance Expectations						Equipment in Safe Working Condition						Operator Skill Level						Operates Safely						Operator's Cooperation Level						Overall Performance						Contractor Signature <i>Bob Smith</i>	
Met Performance Expectations																																											
Equipment in Safe Working Condition																																											
Operator Skill Level																																											
Operates Safely																																											
Operator's Cooperation Level																																											
Overall Performance																																											
						Date 07/20/20 Time 0600																																					
* NOTE: Any rating of POOR requires an explanation in Comment Section.						CALFIRE 297 (Rev 3-2011)																																					
**Final evaluation or for more documentation, use an ICS Form 230 or equivalent.																																											
Pink - Finance		Blue - Home Unit HE Coordinator		Yellow - Vendor		White - Govt Representative																																					

In readiness is all



WATER USAGE REPORT



DATE: _____

Division / Group: _____

RESOURCE / VENDOR ID: _____

REQUEST # _____

TURN INTO FINANCE DAILY

WATER SOURCE LOCATION	Source (Hydrant, Pond, Tank, Other)	Gallons Used	Property Owner & Contact Number**

** Please note PROPERTY OWNER AND CONTACT NUMBER! (Use reverse side if needed.)

The intent of this document is to track, record and validated the amount of water used on a incident.
It's not intended to review the performance of equipment using the water on an incident.



FIRE SUPPRESSION REPAIR GUIDELINES: GLASS INCIDENT CA LNU 015947

Fire suppression repair is the repair of damage caused directly from fire suppression activities. It is not the repair of infrastructure or rehabilitation of burned areas that happened as a result of the fire itself.

Damaged facilities will be upgraded to their pre-fire condition to the extent feasible. Projects too large or complex to be completed by the Fire suppression repair group shall be transferred to the Comp/Claims Unit or the local Unit. Repair work shall only occur in locations authorized by Operations and where fire suppression activities are complete. Fire Suppression Repair Group resources shall evaluate all Divisions for appropriate repair needs. This includes areas inside and outside the fire perimeter, provided the damage was caused by official fire suppression activities.

Examples of items that may be repaired include but are not limited to:

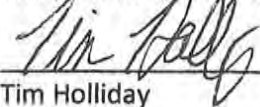
Infrastructure Damage	Natural Resource Damage
Fences and gates	Soil erosion
Culverts, bridges and other watercourse crossings	Adverse impacts to water quality
Water Sources	Adverse impacts to protected species of plants and animals
Utility distribution lines (above or below ground)	Dozer Line Repair
Road barriers removed for fire access	Watercourse Crossings
Trash, debris, and supplies left by fire suppression resources	
Miscellaneous damage to residential property	

Dozers construct both fire and contingency lines. Dozer line width varies greatly. The following measures shall be implemented for constructed dozer lines:

- Berms and push-piles shall be spread out to the extent feasible.
- Waterbreaks shall be constructed at an approximately 45 degree angle and shall be a minimum depth of 12 inches from the bottom of the cut to the top of the berm. Where feasible, the discharge from waterbreaks shall be directed into vegetated areas.
- Where slopes exceed the range at which a tractor can effectively work, waterbreaks shall be constructed with hand tools.
- Roads used in fire suppression activities shall be repaired to pre-fire conditions to the extent feasible. Gravel and soil-surfaced roads shall be watered to prevent excessive dust. Where fire suppression activities have damaged or rendered road drainage facilities non-functional, waterbreaks or drivable rolling dips shall be installed for drainage.
- Where fire suppression activities have filled in or damaged inside ditches, the ditches shall be cleaned and left unobstructed.
- Spacing of waterbreaks shall be as follows:

Slope Gradient	Maximum waterbreak spacing
0-10%	200
11-25%	150
25-50%	100
>50%	75

Spacing criteria is a general guide. Actual location of waterbreaks should be tailored to the topography and placement suited to the best dispersal of water flow.


 Tim Holliday

CAL FIRE Forester I, Fire Suppression Repair

FACILITIES MAP GLASS FIRE

CA-LNU-015947

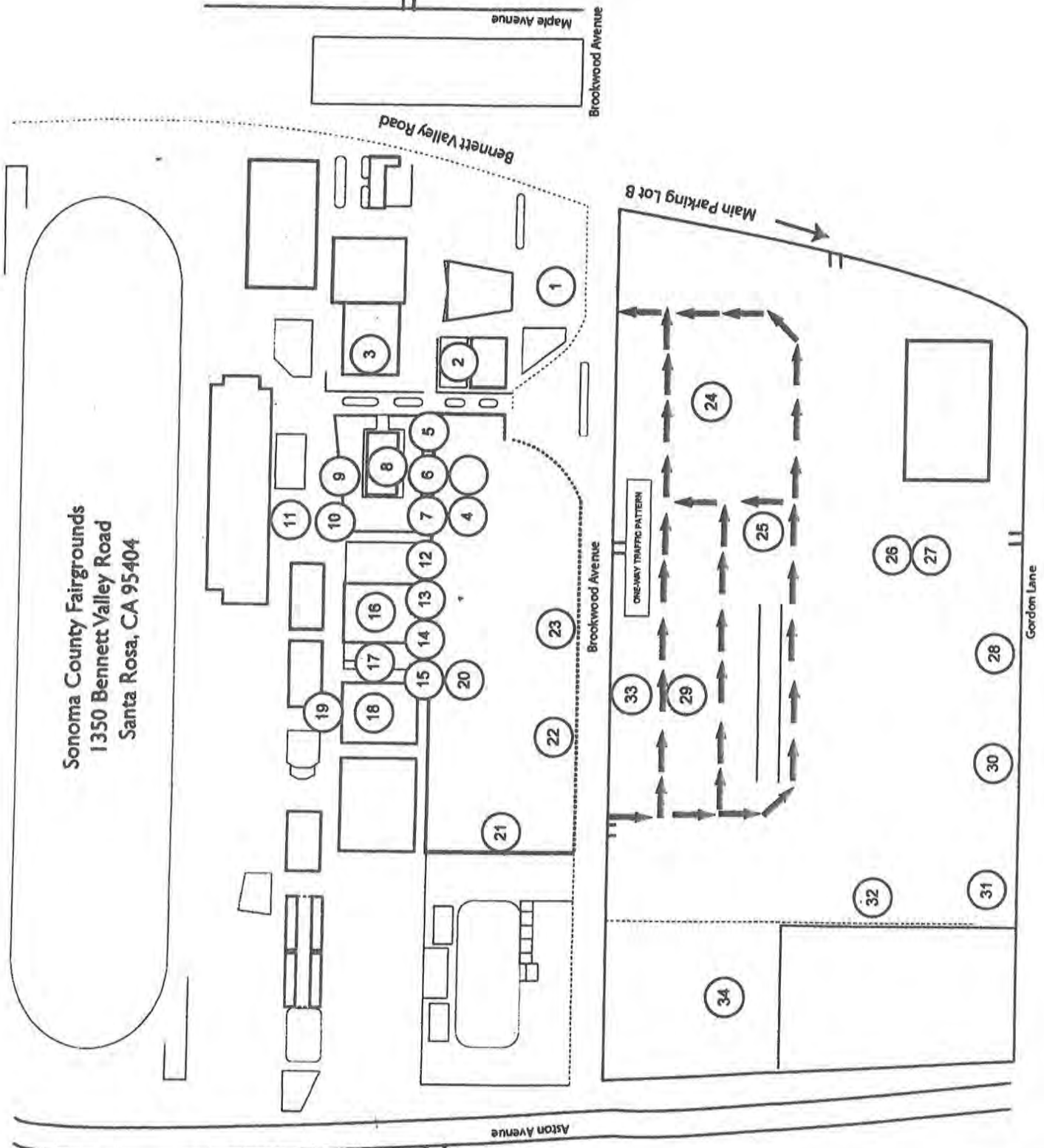
Santa Rosa Fairgrounds

RV Park

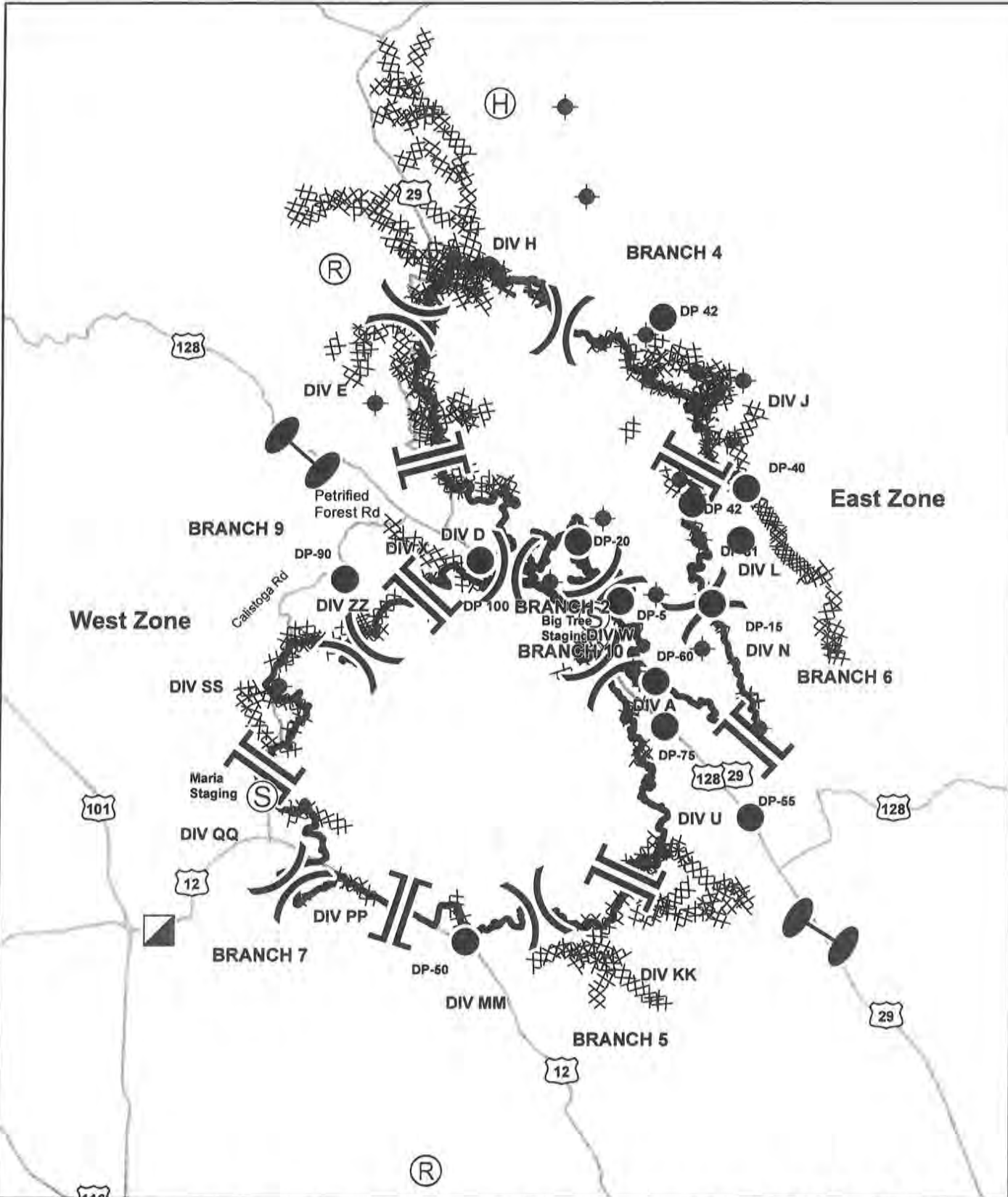
www.gprr.com

LEGEND

1. OVERHEAD PARKING
2. CHECK-IN, ORDERING, DOCUMENTATION UNIT
3. DNS
4. PEER SUPPORT
5. CLERICAL
6. SITUATION, GISS
7. PIO, SAFETY
8. PLANS, RESOURCES, CREW TECH, SUPPRESSION REPAIR
9. LIAISON
10. OPERATIONS
11. INCIDENT COMMANDER
12. HOTELS
13. MEDICAL
14. OES
15. CALFIRE COMM
16. FINANCE, COMP CLAIMS, TIME, INCINET,
17. CALMAT-MEDICAL
18. SUPPLIES
19. LOGISTICS
20. COMMUNICATIONS, CLONING
21. BRIEFING
22. PIO BRIEFING
23. KITCHEN, FEEDING AREA
24. ENGINE PARKING
25. LUCNES, WATER, ICE
26. LAUNDRY
27. SHOWERS
28. HEAVY EQUIPMENT PARKING
29. FUEL
30. SLEEPER TRAILERS
31. TENT SLEEPING
32. CONTRACTOR PARKING
33. GROUND SUPPORT
34. CDCR SLEEPING



Sonoma County Fairgrounds
1350 Bennett Valley Road
Santa Rosa, CA 95404



TRAVEL MAP
 GLASS INCIDENT
 CA-LNU-015947



GLASS INCIDENT
 CA-LNU-015947
Travel Map



Peer Support Team Message:

INCIDENT PEER SUPPORT:

We have a trailer on the incident for any peer support related needs and we are here for you. We may not be in the trailer at all times so please, **DO NOT HESITATE** to call us directly!

Amy Head 916 956-3277

Warren Parrish 916-823-6641

Chris Lomanto 916-247-6974

or

CAL FIRE Peer Support/Helpline

916-445-4337

Below are other Team Members not on the incident who can also be contacted directly:

Tony Howard 916-224-1543

Mike Aiello 916-584-0548

Jeremy Sanders 916-281-6472

Nikole Schutz 916-709-0434

Amber Henderson 805-794-1690

Connie Quarisa 916-213-8697

Noelle BahnMiller 916-661-0011

Mike Deleo 916-661-0724

Shawna Powell 530-717-0667

Krissy Schaefer 619-592-6337

In addition to peer support, if there is a need, we can have a culturally competent Clinician available on the incident that could meet with you on an individual and/or group basis.

Watch for the signs and symptoms of stress in yourself and the people around you. Try and stay positive and get much needed rest when you can. We can do this, together! Stay Healthy, Stay Alert and Stay Strong!

**CAL FIRE Employees can also contact EAP directly at: 1-866-327-4762*

