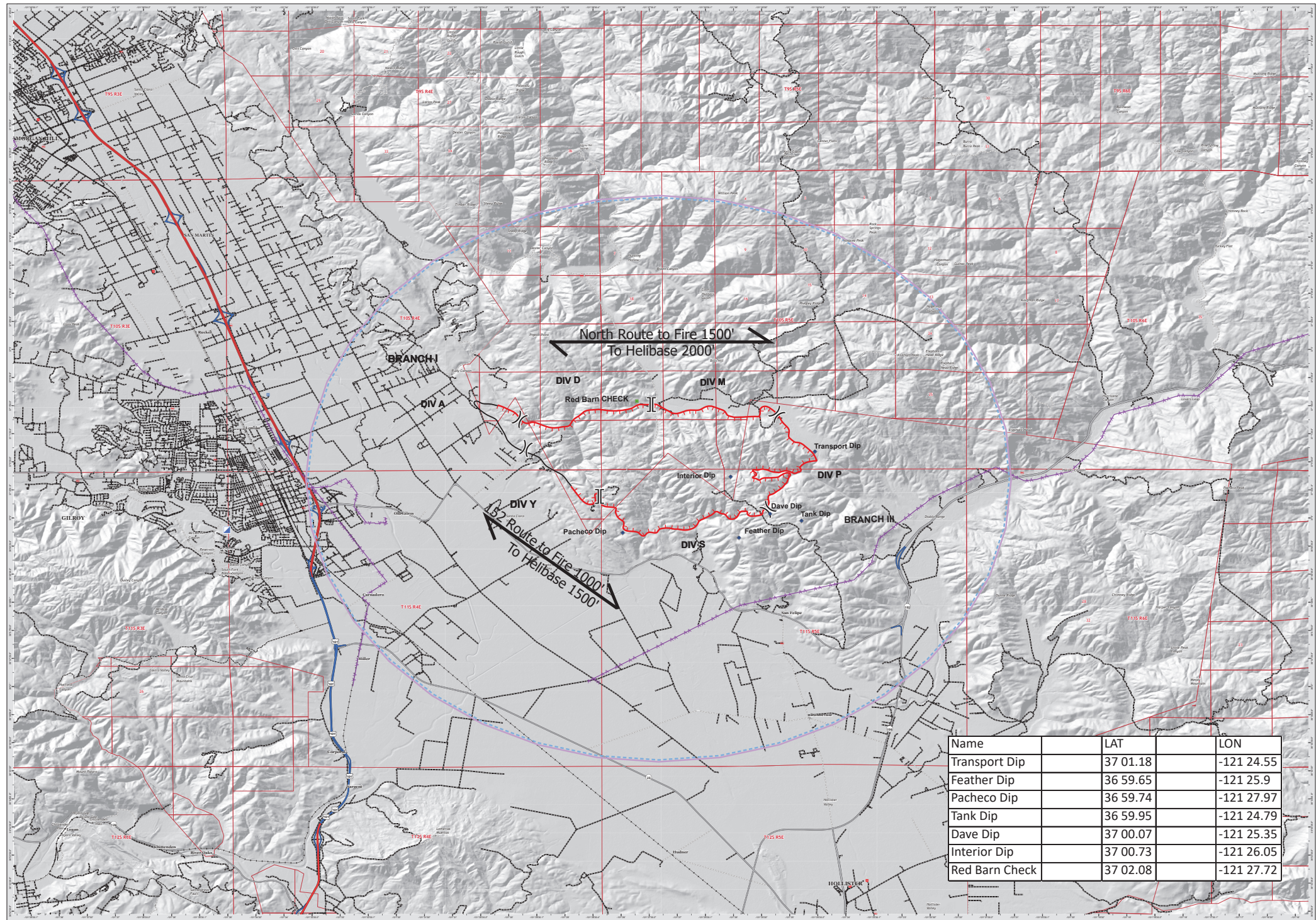


NAME	LAT		LONG	
Transport Dip	37	01.18	-121	24.55
Feather Dip	36	59.65	-121	25.90
Pacheco Dip	36	59.74	-121	27.97
Tank Dip	36	59.95	-121	24.79
Dave Dip	37	00.07	-121	25.35
Interior Dip	37	00.73	-121	26.05
Red Barn Check	37	02.08	-121	27.72

North Route: To fire 1500', To helibase 2000'

152 Route: To fire 1000', To helibase 1500'



Name	LAT	LON
Transport Dip	37 01.18	-121 24.55
Feather Dip	36 59.65	-121 25.9
Pacheco Dip	36 59.74	-121 27.97
Tank Dip	36 59.95	-121 24.79
Dave Dip	37 00.07	-121 25.35
Interior Dip	37 00.73	-121 26.05
Red Barn Check	37 02.08	-121 27.72