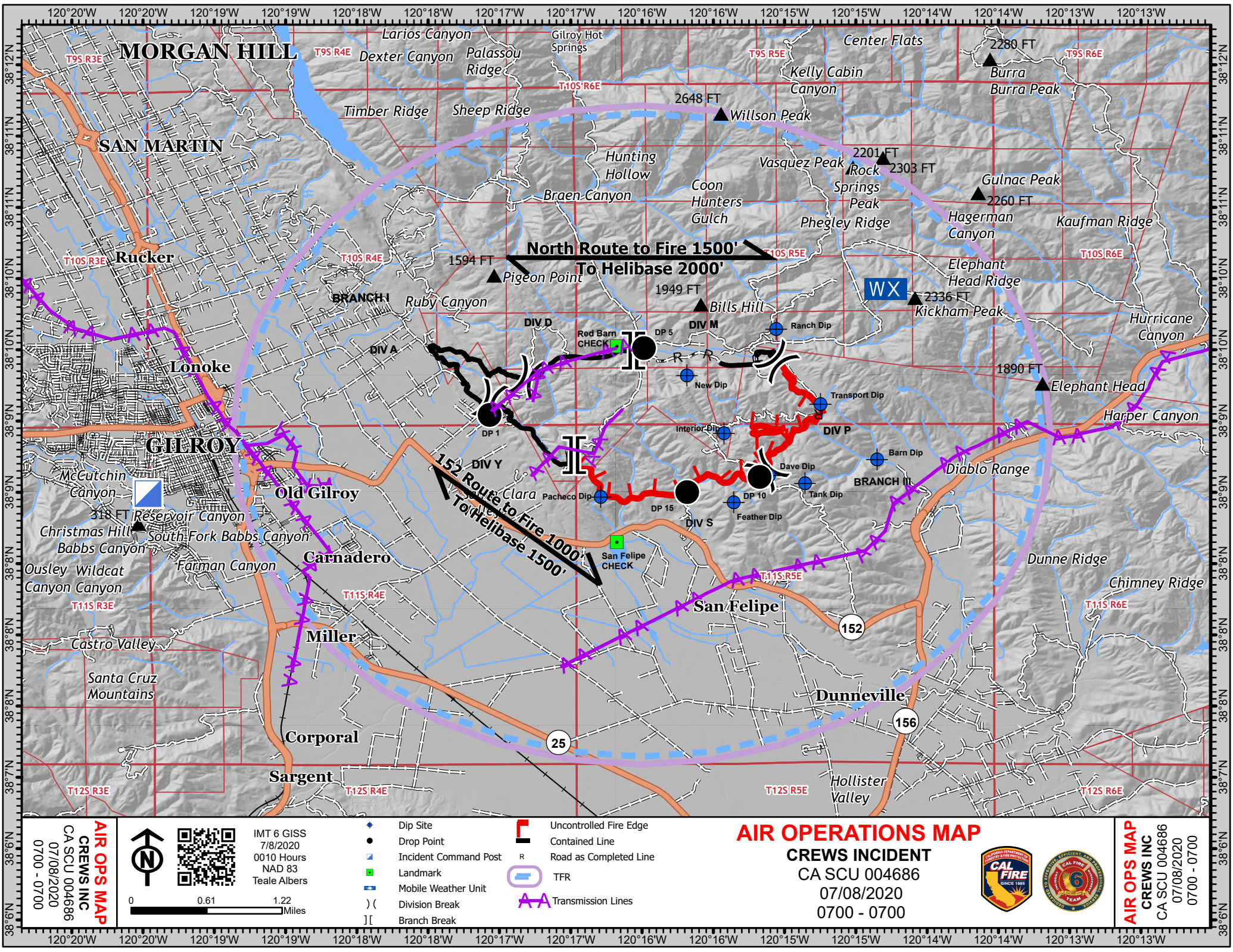


Name	LAT	LON
Barn Dip	37 00.32	121 23.67
Dave Dip	37 00.07	121 25.35
Feather Dip	36 59.65	121 25.9
Interior Dip	37 00.73	121 26.05
New Dip	37 01.63	121 26.63
Pacheco Dip	36 59.74	121 27.97
Ranch Dip	37 02.35	121 25.24
Tank Dip	36 59.95	121 24.79
Transport Dip	37 01.18	121 24.55
San Felipe Check	36 59.03	121 27.72
Red Barn Check	37 02.08	121 27.72

North Route: To fire 1500', To helibase 2000'

152 Route: To fire 1000', To helibase 1500'



AIR OPS MAP
CREWS INC
 CA SCU 004686
 07/08/2020
 0700 - 0700

IMT 6 GISS
 7/8/2020
 0010 Hours
 NAD 83
 Teale Albers

- ◆ Dip Site
- Drop Point
- Incident Command Post
- Landmark
- Mobile Weather Unit
-) (Division Break
-]] Branch Break
- ▬ Uncontrolled Fire Edge
- ▬ Contained Line
- R Road as Completed Line
- ▬ TFR
- AA Transmission Lines

AIR OPERATIONS MAP
CREWS INCIDENT
 CA SCU 004686
 07/08/2020
 0700 - 0700



AIR OPS MAP
CREWS INC
 CA SCU 004686
 07/08/2020
 0700 - 0700