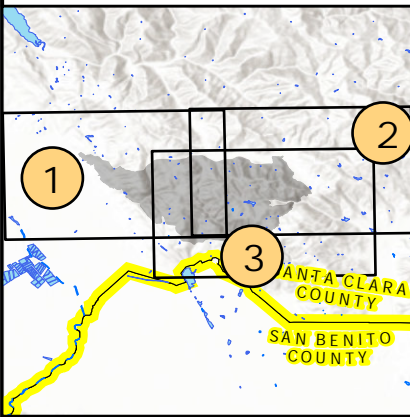


# IAP Map

Crews Incident  
CA-SCU-004686  
July 8, 2020

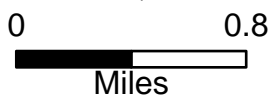
## Index

- A Dip Site
- ! Drop Point
- Landmark
- Mobile Weather Unit
- ( ) Division Break
- [ ] Branch Break
- Uncontrolled Fire Edge
- Contained Line
- Completed Dozer Line
- Completed Hand Line
- Road as Completed Line
- Highway or ramp
- Local connector
- Local or 4WD road

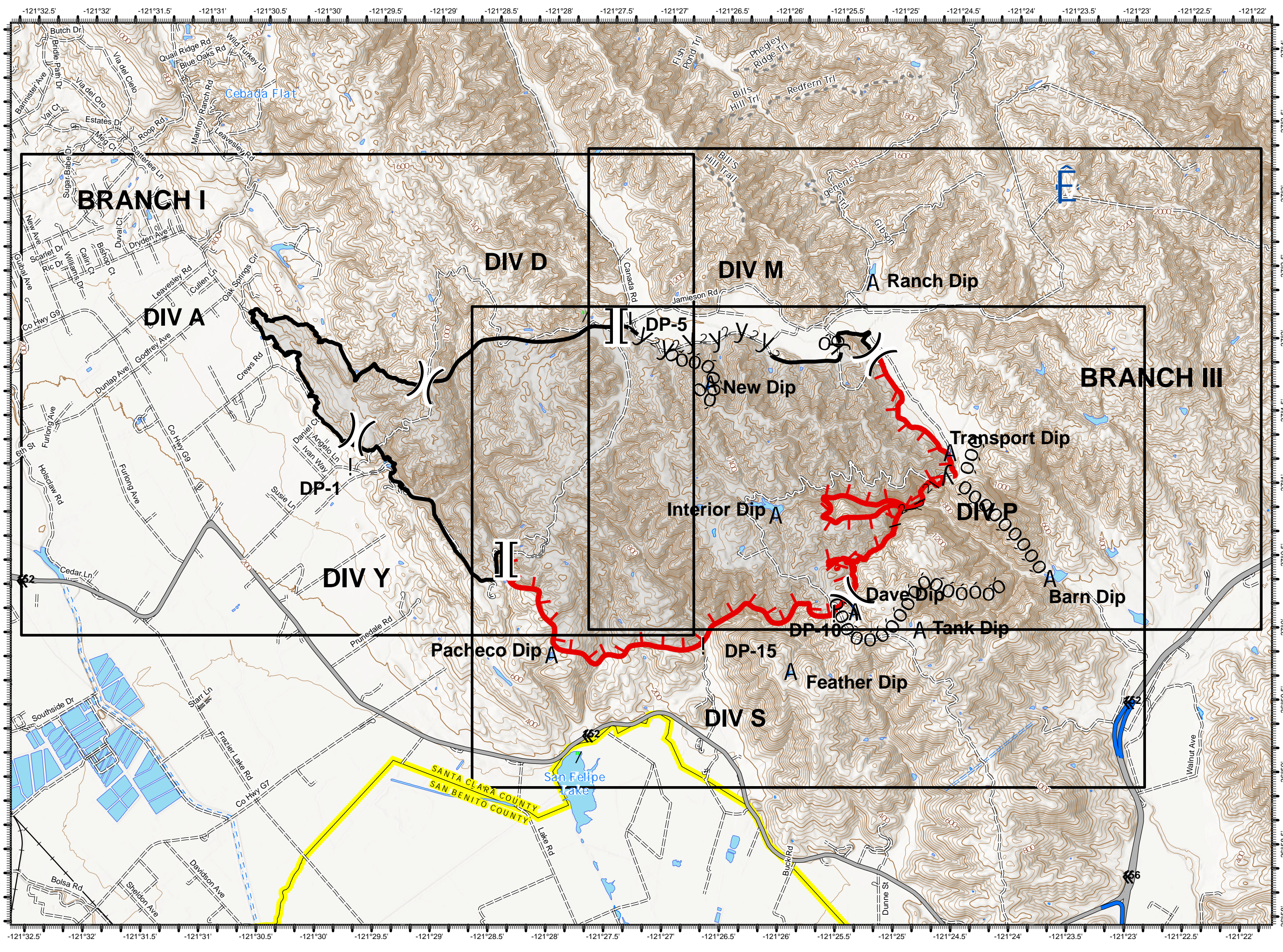


**DISCLAIMER:**  
The displayed incident data is approximate and should only be used for informational purposes. The information contained in supporting base layers was generated from GIS data maintained by different sources and agencies and is not necessarily accurate to mapping, surveying, or engineering standards.

1: 45,000



7/7/2020  
2218 Hours

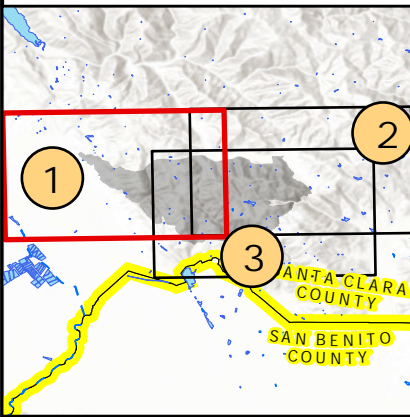


# IAP Map

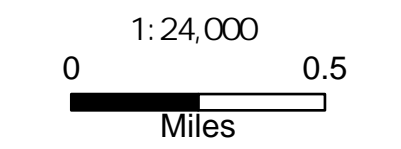
Crews Incident  
CA-SCU-004686  
July 8, 2020

Page 1

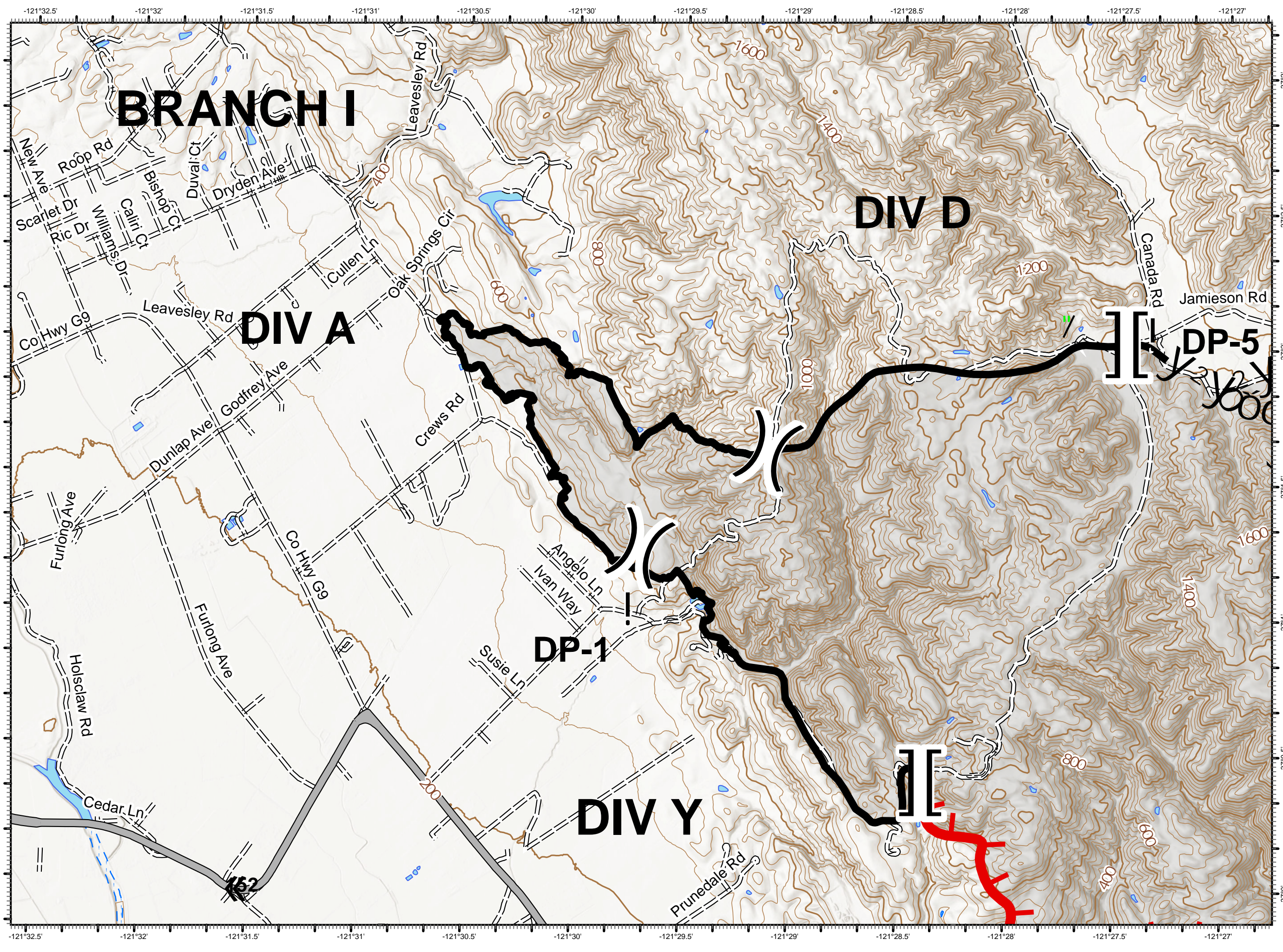
- A Dip Site
- ! Drop Point
- ∇ Landmark
- ) ( Division Break
- || Branch Break
- Uncontrolled Fire Edge
- Contained Line
- ó ó Completed Dozer Line
- y <sup>2</sup> Road as Completed Line
- Local connector
- == Local or 4WD road



DISCLAIMER:  
The displayed incident data is approximate and should only be used for informational purposes. The information contained in supporting base layers was generated from GIS data maintained by different sources and agencies and is not necessarily accurate to mapping, surveying, or engineering standards.



7/7/2020  
2219 Hours

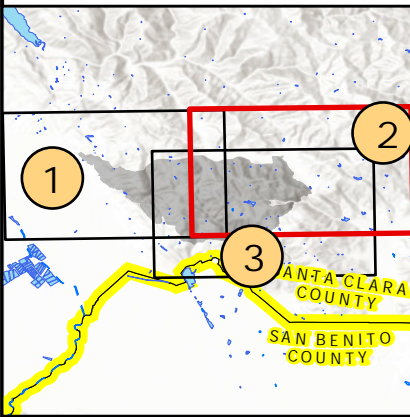


# IAP Map

Crews Incident  
CA-SCU-004686  
July 8, 2020

Page 2

- A Dip Site
- ! Drop Point
- Landmark
- Mobile Weather Unit
- ( ) Division Break
- [ ] Branch Break
- Uncontrolled Fire Edge
- Contained Line
- Completed Dozer Line
- Completed Hand Line
- Road as Completed Line
- Local connector
- Local or 4WD road

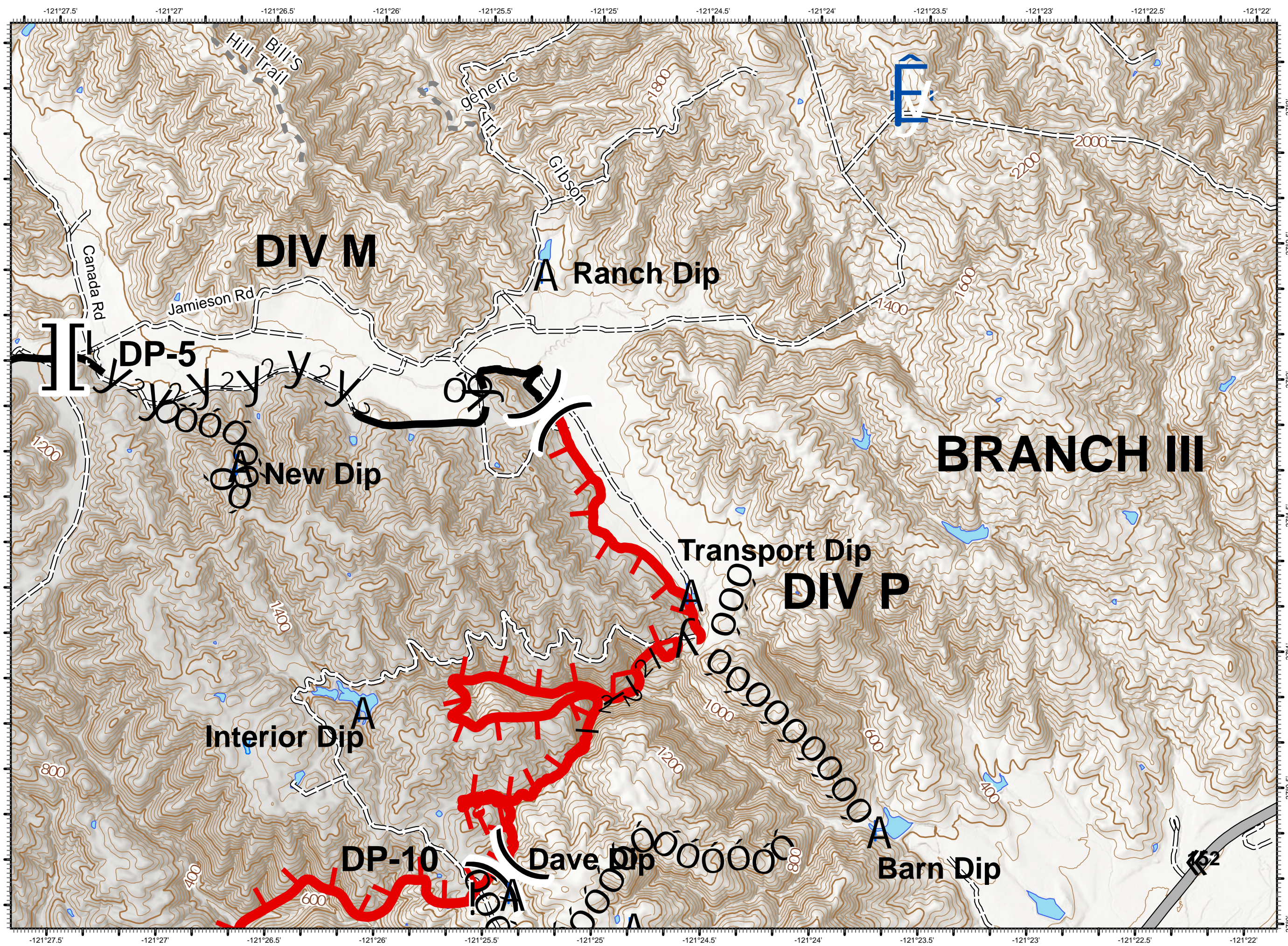


DISCLAIMER:  
The displayed incident data is approximate and should only be used for informational purposes. The information contained in supporting base layers was generated from GIS data maintained by different sources and agencies and is not necessarily accurate to mapping, surveying, or engineering standards.

1:24,000



7/7/2020  
2219 Hours

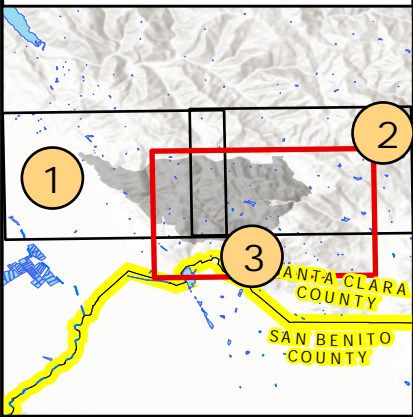


# IAP Map

Crews Incident  
CA-SCU-004686  
July 8, 2020

Page 3

- A Dip Site
- ! Drop Point
- ∇ Landmark
- ) ( Division Break
- [[ Branch Break
- Uncontrolled Fire Edge
- Contained Line
- ó ó Completed Dozer Line
- | 2 Completed Hand Line
- y 2 Road as Completed Line
- Highway or ramp
- Local connector
- === Local or 4WD road



DISCLAIMER:  
The displayed incident data is approximate and should only be used for informational purposes. The information contained in supporting base layers was generated from GIS data maintained by different sources and agencies and is not necessarily accurate to mapping, surveying, or engineering standards.

1:24,000



7/7/2020  
2219 Hours

