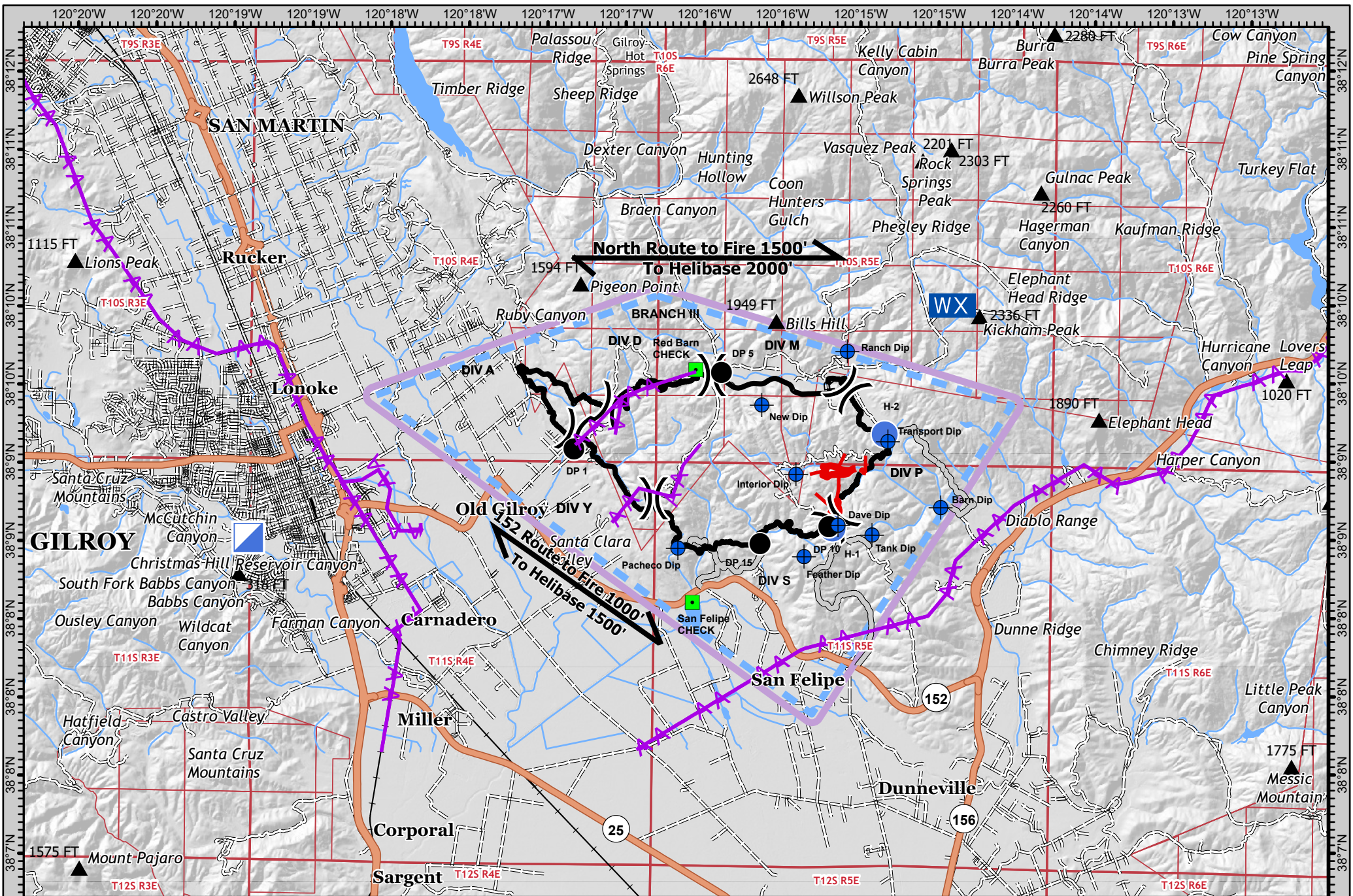


Name	LAT	LON
Barn Dip	37 00.32	121 23.67
Dave Dip	37 00.07	121 25.35
Feather Dip	36 59.65	121 25.9
Interior Dip	37 00.73	121 26.05
New Dip	37 01.63	121 26.63
Pacheco Dip	36 59.74	121 27.97
Ranch Dip	37 02.35	121 25.24
Tank Dip	36 59.95	121 24.79
Transport Dip	37 01.18	121 24.55
San Felipe Check	36 59.03	121 27.72
Red Barn Check	37 02.08	121 27.72
H-1	37 00.027	121 25.44
H-2	37 01.272	121 24.608

North Route: To fire 1500', To helibase 2000'

152 Route: To fire 1000', To helibase 1500'



**AIR OPS MAP**  
**CREWS INC**  
 CA SCU 004686  
 07/10/2020  
 0700 - 0700

Scale: 1:120,000

IMT 6 GISS  
 7/9/2020  
 2239 Hours  
 NAD 83  
 Teale Albers

- ◆ Dip Site
- Drop Point
- Helispot
- Incident Command Post
- Landmark
- Mobile Weather Unit
- ) Division Break
- ▬ Uncontrolled Fire Edge
- ▬ Contained Line
- R Road as Completed Line
- ▬ Access or Improved Road
- ▬ TFR
- AA Transmission Lines

**AIR OPERATIONS MAP**  
**CREWS INCIDENT**  
 CA SCU 004686  
 07/10/2020  
 0700 - 0700



**AIR OPS MAP**  
**CREWS INC**  
 CA SCU 004686  
 07/10/2020  
 0700 - 0700