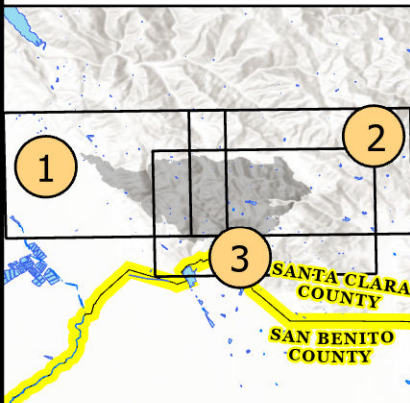


IAP Map

Crews Incident
CASC004686
7/11-14/2020

Index

- Division Break
- Dip Site
- Drop Point
- Helispot
- Landmark
- Mobile Weather Unit
- Contained Line
- Uncontrolled Fire Edge
- Completed Dozer Line
- Completed Hand Line
- Road as Completed Line
- Access or Improved Road
- Highway or ramp
- Local connector
- Local or 4WD road

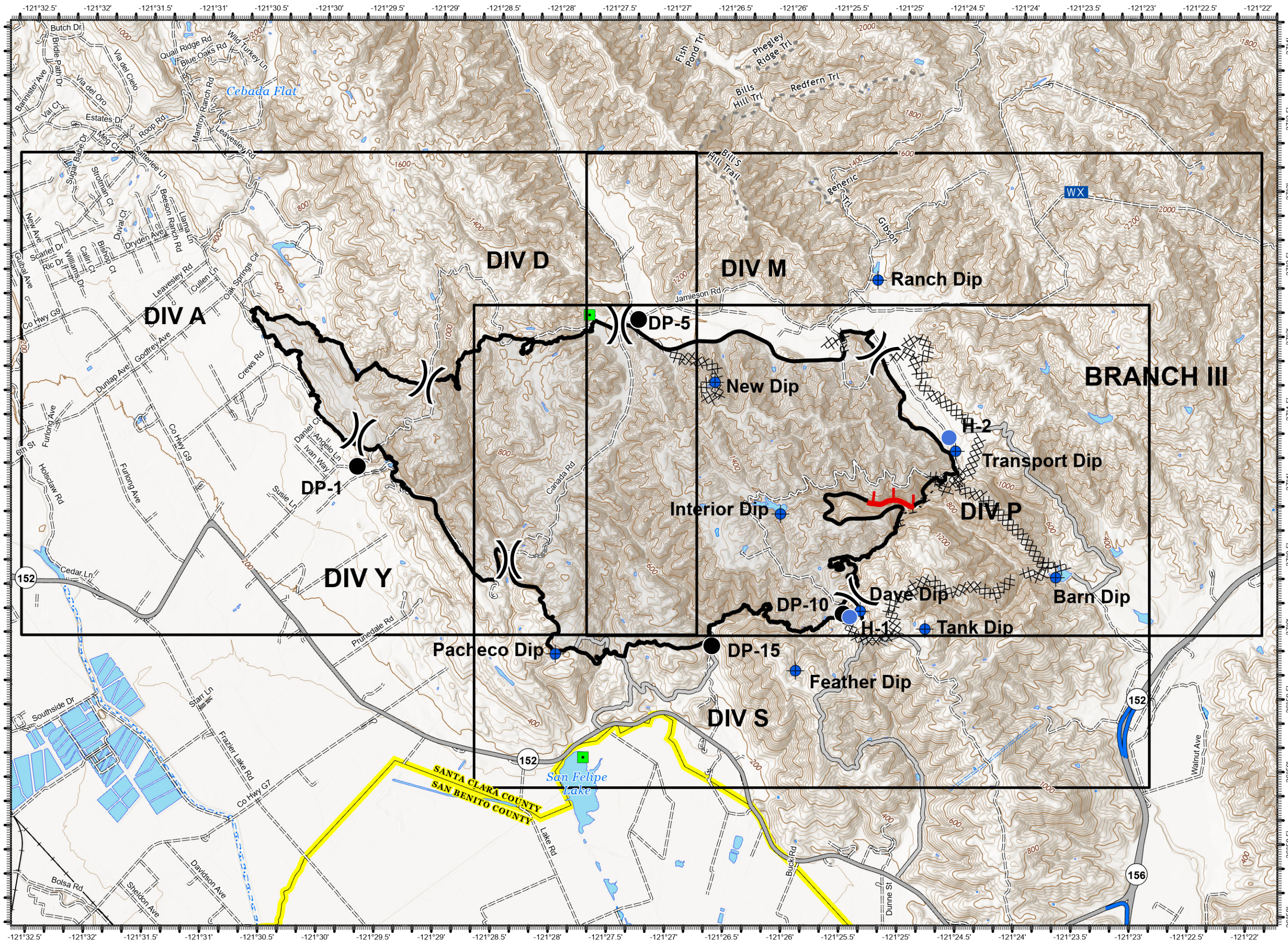


DISCLAIMER:
The displayed incident data is approximate and should only be used for informational purposes. The information contained in supporting base layers was generated from GIS data maintained by different sources and agencies and is not necessarily accurate to mapping, surveying, or engineering standards.

1:45,000



7/10/2020
2300 Hours



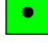







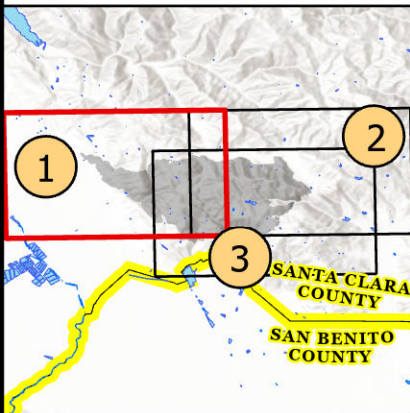
IAP Map

Crews Incident
CASC004686
7/11-14/2020

Page 1

Division Break

-  Dip Site
-  Drop Point
-  Landmark
-  Contained Line
-  Completed Dozer Line
-  Access or Improved Road
-  Local connector
-  Local or 4WD road

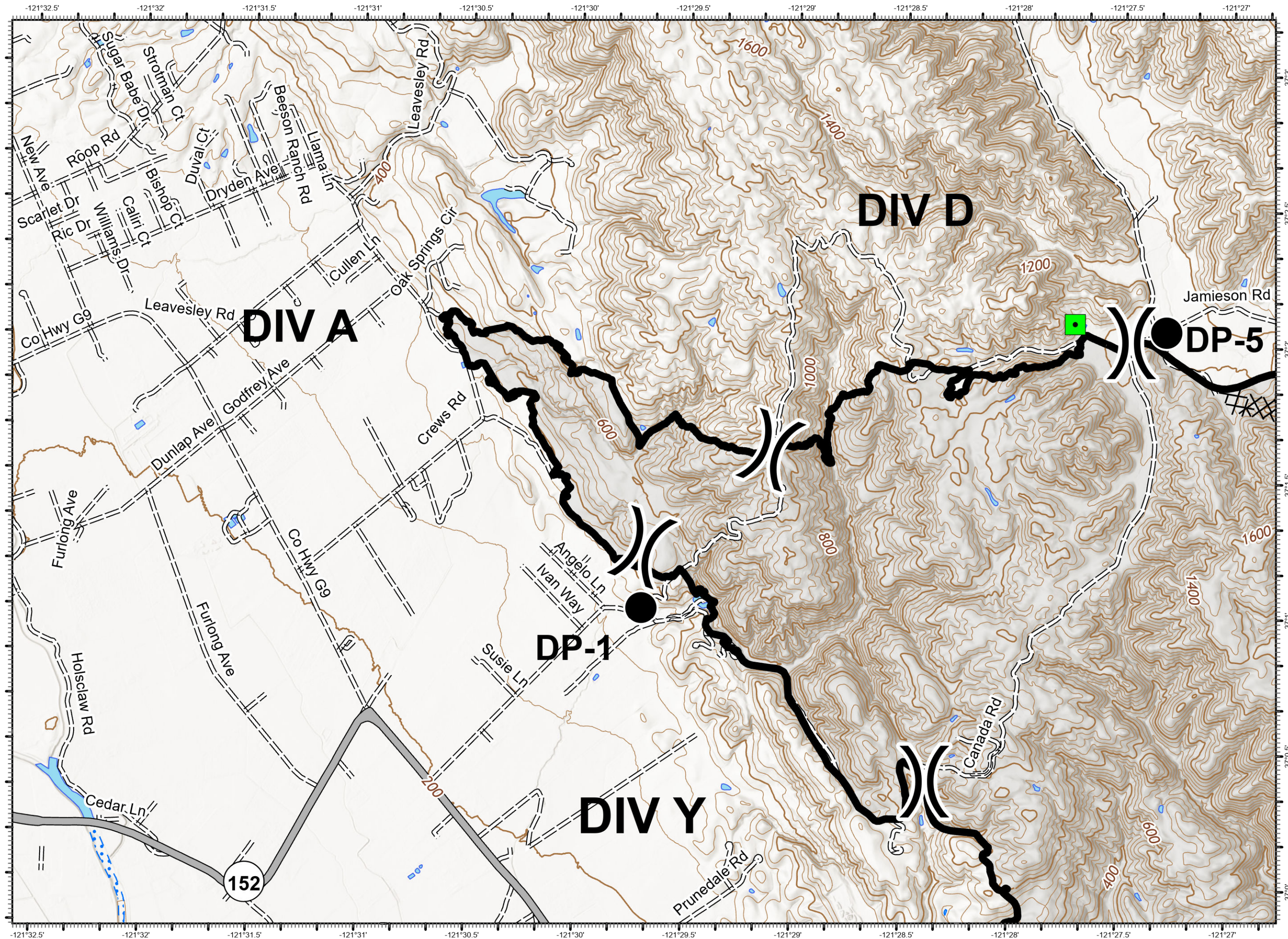


DISCLAIMER:
The displayed incident data is approximate and should only be used for informational purposes. The information contained in supporting base layers was generated from GIS data maintained by different sources and agencies and is not necessarily accurate to mapping, surveying, or engineering standards.

1:24,000



7/10/2020
2301 Hours



IAP Map

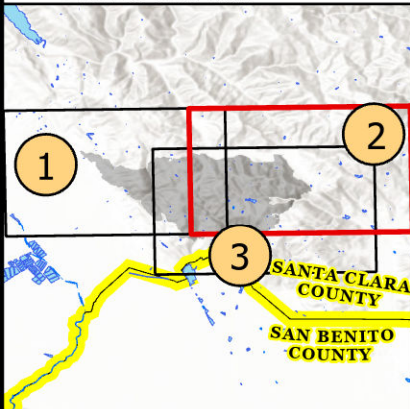
Crews Incident

CASCU004686

7/11-14/2020

Page 2

- Division Break
- Dip Site
- Drop Point
- Helispot
- Landmark
- WX Mobile Weather Unit
- Contained Line
- Uncontrolled Fire Edge
- Completed Dozer Line
- Completed Hand Line
- Road as Completed Line
- Access or Improved Road
- Local connector
- Local or 4WD road



DISCLAIMER:
The displayed incident data is approximate and should only be used for informational purposes. The information contained in supporting base layers was generated from GIS data maintained by different sources and agencies and is not necessarily accurate to mapping, surveying, or engineering standards.

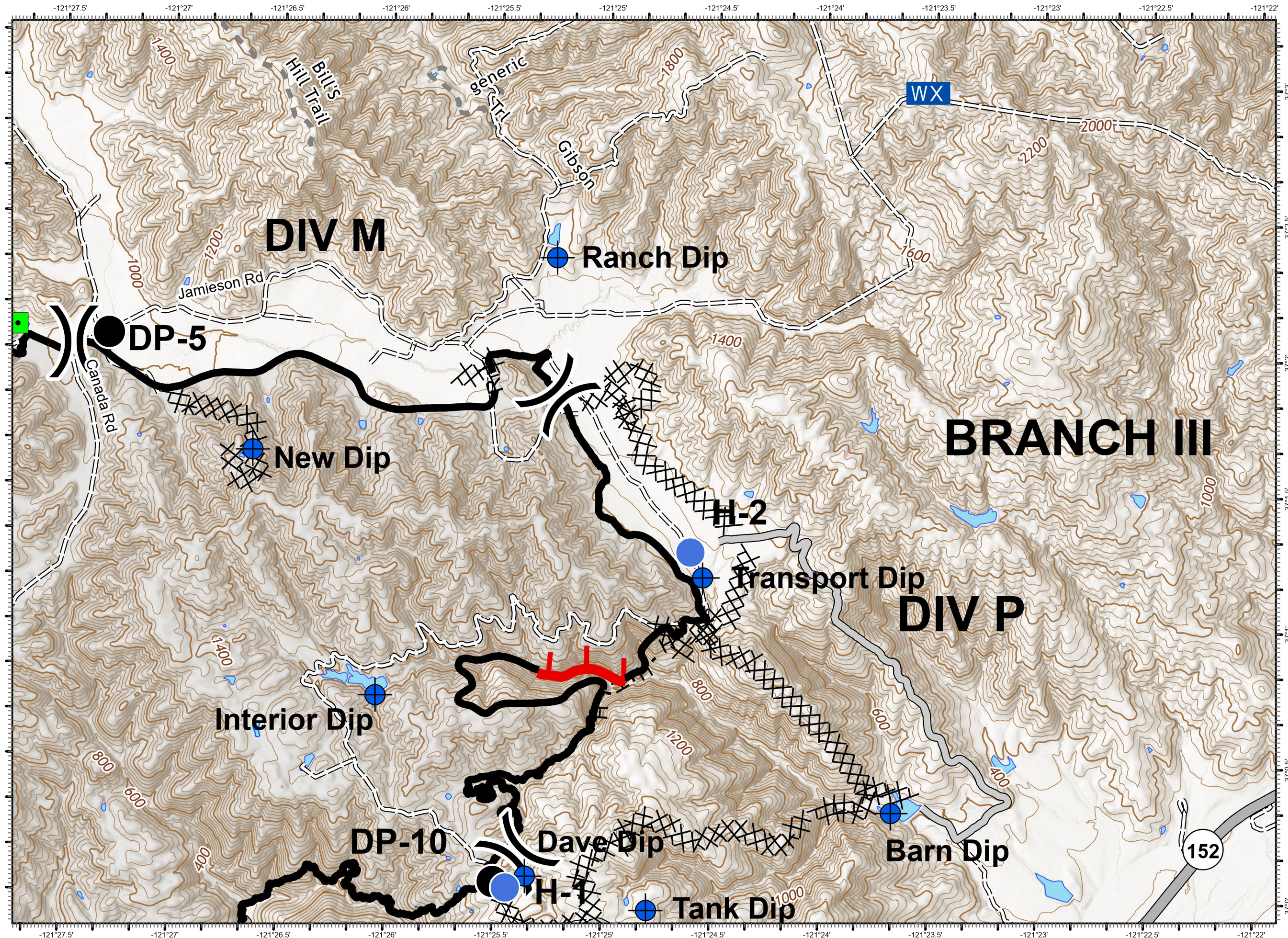
1:24,000

0 0.5

Miles



7/10/2020
2301 Hours

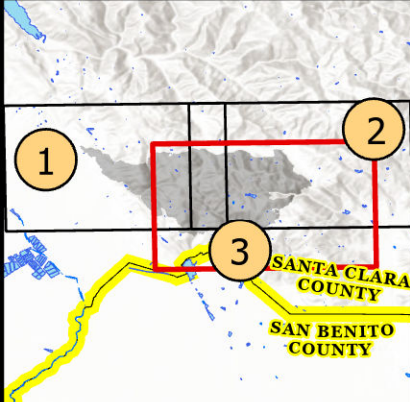


IAP Map

Crews Incident
CASC004686
7/11-14/2020

Page 3

- Division Break
- Dip Site
- Drop Point
- Helispot
- Landmark
- Contained Line
- Uncontrolled Fire Edge
- Completed Dozer Line
- Completed Hand Line
- Road as Completed Line
- Access or Improved Road
- Highway or ramp
- Local connector
- Local or 4WD road



DISCLAIMER:
The displayed incident data is approximate and should only be used for informational purposes. The information contained in supporting base layers was generated from GIS data maintained by different sources and agencies and is not necessarily accurate to mapping, surveying, or engineering standards.

1:24,000



7/10/2020
2301 Hours

