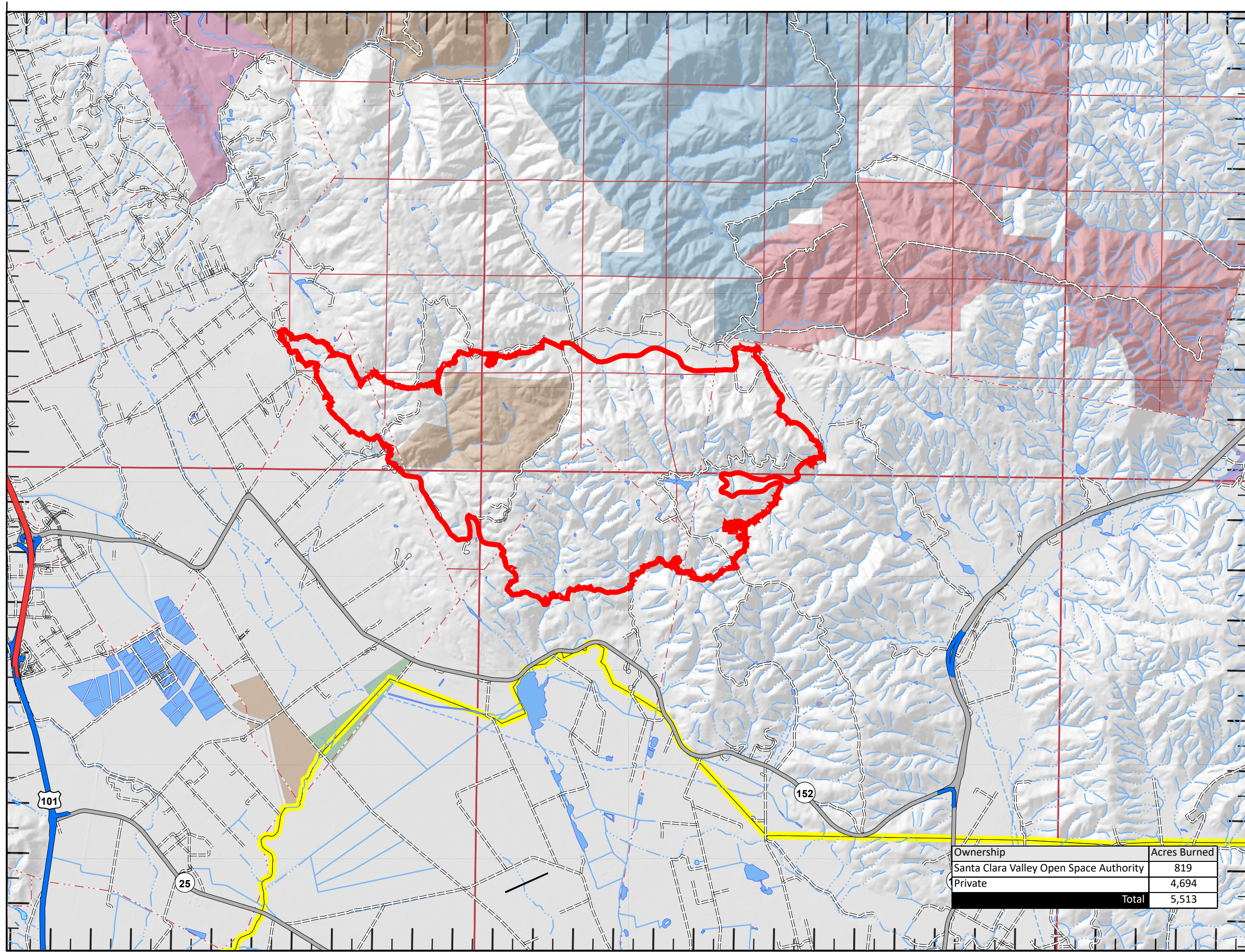


OWNERSHIP MAP

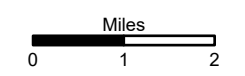
Crews Incident
CA-SCU-004686
FINAL

LEGEND

-  Wildfire Daily Fire Perimeter
-  County Line
-  Bureau of Reclamation
-  California Department of Fish and Wildlife
-  California Department of Parks and Recreation
-  Gilroy, City of
-  Santa Clara County Parks and Recreation Dept., County of
-  Santa Clara Valley Open Space Authority
-  The Nature Conservancy
-  Unknown Federal



Ownership	Acres Burned
Santa Clara Valley Open Space Authority	819
Private	4,694
Total	5,513



DISCLAIMER:
The displayed incident data is approximate and should only be used for informational purposes. The information contained in supporting base layers was generated from GIS data maintained by different sources and agencies and is not necessarily accurate to mapping, surveying, or engineering standards.

1:60,000
IMT 6 GIS
July 10, 2020
2216