

# INCIDENT ACTION PLAN CREWS INCIDENT

CASCU004686

Tuesday



## OPERATIONAL PERIOD

7/7/2020      0700  
to  
7/8/2020      0700





# INCIDENT OBJECTIVES (ICS 202)

<b>1. Incident Name:</b> <p style="text-align: center;">CREWS</p>	<b>2. Operational Period:</b>	Date From: 7/7/2020 Time From: 0700	Date To: 7/8/2020 Time To: 0700
--	-------------------------------	--	------------------------------------

**3. Objective(s):**

- Management Objectives
- Provide for emergency personnel and public safety at all times.
  - Ensure COVID-19 precautions and best practices are met at all times.
  - Protect property, improvements, and infrastructure.
  - Ensure repopulation takes place in a quick, efficient, and effective manner.
  - Ensure coordinated, timely and accurate release of public information.
  - Foster and maintain relationships with all cooperators and stakeholders.
  - Protect economic, natural, cultural and heritage resources.
  - Maintain fiscal accountability and keep costs commensurate with values at risk.

- Control Objectives
- Keep the fire East of Crews Road
  - Keep the fire South of Henry Coe State Park
  - Keep the fire West of Highway 152
  - Keep the fire North of Highway 152

**General Situational Awareness:**

Steep and rugged terrain, critically dry and receptive fuel beds, active area for fire history and drought stressed trees.

**5. Site Safety Plan Required?** Yes  No

**Approved Site Safety Plan(s) Located at:**

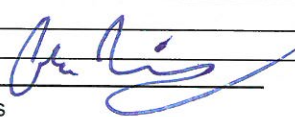
**6. Incident Action Plan**

<input checked="" type="checkbox"/> ICS 203	<input checked="" type="checkbox"/> ICS 215A	<input checked="" type="checkbox"/> ICS 205 A	<input type="checkbox"/>
<input checked="" type="checkbox"/> ICS 204	<input checked="" type="checkbox"/> ICS 220	<input checked="" type="checkbox"/> Training Message	<input type="checkbox"/>
<input checked="" type="checkbox"/> ICS 205	<input checked="" type="checkbox"/> Facility Maps	<input checked="" type="checkbox"/> Travel Map	<input type="checkbox"/>
<input checked="" type="checkbox"/> ICS 206	<input checked="" type="checkbox"/> Weather Forecast	<input type="checkbox"/> Demob Plan	<input type="checkbox"/>
<input checked="" type="checkbox"/> ICS 208	<input checked="" type="checkbox"/> Fire Behavior	<input checked="" type="checkbox"/> Finance Message	<input checked="" type="checkbox"/> ICS 214

**7. Prepared By:** A. Mitchell      **Position/Title:** PSC      **Signature:**

**8. Approved by Incident Commander:** J. Veik / M. Blankenheim      **Signature:**

## ORGANIZATION ASSIGNMENT LIST (ICS 203)

<b>1. Incident Name:</b> CREWS		<b>2. Operational Period: Date From:</b> 7/7/2020		<b>Date To:</b> 7/8/2020	
		<b>Time From:</b> 0700		<b>Time To:</b> 0700	
<b>3. Incident Commander(s) and Command Staff:</b>			<b>7. Operation Section:</b>		
IC/UC's	J. Veik / M. Blankenheim		Operations	T. Ernst / R. Janssen / M. Martinez	
Deputy	D. Martin (T) / J. Janssen (T)		Deputy Operations	S. Corn	
Safety Officer	J. Segura / J. Novak (T)		Night Ops	S. Lauderdale	
Information Officer	R. Brocchini / R. Lubben (T)		Staging Area	J. Smith	
Liaison Officer	D. Pender / J. Kiszka (T) / R. Roberts (T)		<b>Branch</b>	<b>I</b>	<b>K. Bohall</b>
<b>4. Agency/Organization Representatives:</b>			Division/Group	A,Y	STEN 9160C
Agency/Organization	Name		Division/Group	D	K. Ryan
Santa Clara County OEM	D. Read		Division/Group		
Gilroy FD	M. Brisbee		Division/Group		
Cal OES	D. Franklin		Division/Group		
Santa Clara County Pub. Health	Dr. M. Fenstersheib		<b>Branch</b>	<b>III</b>	<b>S. Lane / Caspi (T)</b>
CHP	C. Armstrong		Division/Group	M	S. Rohrs / J. Burges (T)
CDCR	C. Schwartz		Division/Group	P	L. Ermigaret / G. Dean (T)
			Division/Group	S	M. Jonsson
			Division/Group		
			<b>Branch</b>		
			Division/Group		
			Division/Group		
			Division/Group		
			Division/Group		
			Division/Group		
			<b>Branch</b>		
			Division/Group		
			Division/Group		
			Division/Group		
			Division/Group		
			<b>Branch</b>		
			Division/Group		
<b>5. Planning Section:</b>			Division/Group		
Chief	G. Garcia		Division/Group		
Deputy	A. Mitchell / S. Sherwood (T)		Division/Group		
Resource Unit	D. Scheurich / T. Byrd / J. Heald (T) / J. Worden (T) / A. Summers (T) / M. Thomas (T)		Division/Group		
Situation Unit	C. Ingram / M. Thau (T)		<b>Branch</b>		
Documentation Unit			Division/Group		
Demobilization Unit	T. Shevenell		Division/Group		
GISS	T. Knecht		Division/Group		
FBAN	S. Volmer		Division/Group		
IMET			Division/Group		
Training Tech Spec	S. Vargas / I. Crossley		<b>Air Operations Branch:</b>		<b>Director: B. Kremensky</b>
			Air Support Group Supervisor		N. Matteoli
			Air Tactical Group Supervisor		L. Kalfsbeek
			Helibase Manager		K. Hill
<b>6. Logistics Section:</b>					
Chief	S. Dohman / J. Warden				
Supply Unit	P. Lee		<b>8. Finance/Administration Section:</b>		
Facilities Unit	B. Luiz / J. Peckham (T)		Chief	R. Browne / G. Belk	
Ground Support Unit	J. Luckenbach		Time Unit	J. Navarro	
Communications Unit	J. Brooks / M. Heyfron (T)		Procurement Unit	J. Andrade	
Medical Unit	S. McGary		Comp/Claims Unit	B. Stirtion	
			Cost Unit	J. Tapia	
<b>Prepared By: Name:</b> A. Mitchell			<b>Position/Title:</b> PSC		<b>Signature:</b> 
<b>ICS 203</b>			<b>Date/Time:</b> 7/6/2020 2300 hours		<b>NIMS IAP</b>

**CREWS**

National Weather Service San Francisco/Monterey Bay Area

2020-07-06 9:27 AM PDT

Spot Forecast for CREWS...CALFIRE

National Weather Service San Francisco Bay Area

926 AM PDT Mon Jul 6 2020

Forecast is based on forecast start time of 0600 PDT on July 07.  
If conditions become unrepresentative...contact the National Weather Service.

.DISCUSSION...After gusty onshore winds this afternoon and evening, expect lighter overall winds tomorrow. However, breezy afternoon and evening winds will remain possible. Slightly cooler temperatures will persist into tomorrow along with decent overnight humidity recoveries as the marine layer deepens. Daytime relative humidity values will continue to slowly increase through tomorrow.

.TUESDAY...

Sky/weather.....Partly cloudy in the morning then becoming sunny.  
Max temperature.....78-83.  
Min humidity.....35-42 percent.  
Wind (20 ft).....Southwest winds 5 to 10 mph with gusts to around 15 mph in the afternoon and evening.  
Mixing height.....500 ft AGL in the morning increasing to 1100 ft AGL in the afternoon.  
Transport winds....West to southwest around 5 to 10 mph.  
Marine layer.....1200 ft.

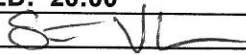
.TUESDAY NIGHT...

Sky/weather.....Mostly clear.  
Min temperature.....47-52.  
Max humidity.....90-95 percent.  
Wind (20 ft).....West winds 5 to 10 mph.  
Mixing height.....800 ft AGL early lowering to 300 ft AGL overnight.  
Transport winds....West around 5 to 10 mph.  
Marine layer.....1200 ft.

\$\$

Forecaster...A\_SCHNEIDER  
Requested by...STEPHEN VOLMER  
Type of request...WILDFIRE  
.TAG 2009013.0/MTR  
.DELDT 07/06/20  
.FormatterVersion 1.0.26  
.EMAIL STEPHEN.VOLMER@FIRE.CA.GOV

# FIRE BEHAVIOR FORECAST

<b>FORECAST NUMBER:</b> 1	<b>TYPE OF FIRE:</b> WILDLAND
<b>FIRE NAME:</b> CREWS	<b>OPERATIONAL PERIOD:</b> JULY 7 0700-0700
<b>DATE ISSUED:</b> July 6, 2020	<b>TIME ISSUED:</b> 20:00
<b>UNIT:</b> Santa Clara	<b>SIGNED:</b> 
	<b>Typed/printed:</b> FBAN Stephen Volmer

## INPUTS

**WEATHER SUMMARY:** Early morning light down canyon downslope winds transitioning to more breezy conditions beginning in the afternoon and lasting through sundown. Temperatures will begin cooling over the next few days, with good overnight relative humidity.

Daytime high temperature 88 degrees, decreasing to 45 degrees in the evening. Minimum relative humidity will be 35% during the day, and increase up to 95% overnight. Winds will be Southwest 5-10 with gusts to 15 possible, switching to a West wind 5-10 after sundown.

\*\*\*An upper level trough is approaching, resulting in an increased onshore flow\*\*\*

## OUTPUTS

### FIRE BEHAVIOR

**GENERAL:** Fuels have continued to dry out but are still below critical levels. Expect ignitions to occur easily with dangerous fire spread rates when in alignment with wind, slope, and topography. Any active fire will continue to produce spot fires, which will easily ignite in the fine flashy fuel bed and be able to produce dangerous rates of spread when in alignment.

### SPECIFIC:

**GRASS:** Rate of Spread...100 ft/min Flame Length...6 ft Spotting...1/4 mi Probability of Ignition 70%

**SHRUB:** Rate of Spread...20 ft/min Flame Length...7 ft Spotting...1/4 mi Probability of Ignition 70%

**OAK UNDERSTORY:** Rate of Spread...3 ft/min Flame Length...1.5 ft Spotting...1/4 mi Probability of Ignition 70%

Divisions M, P, and S have very steep terrain with heavy canopy cover, which has produced a very dirty burn. Be alert for deep seated smoldering in the duff layer, fire weakened branches, and rolling material.

Sunset 7/7...20:28 Sunrise 7/8...05:54

**AIR OPERATIONS:** Mixing heights will be low in the morning, increasing to over 1100' AGL in the afternoon. Expect gusty conditions over the ridgetops. Transport wind will be out of the west throughout the shift.

## SAFETY

Steep drainages will aid in the spread and ignition of fire due to rolling material. Have lookouts posted.

The dry grasses are a very receptive fuel bed for embers to initiate spot fires

## SAFETY MESSAGE/PLAN (ICS 208)

<b>1. Incident Name:</b> CREWS	<b>2. Operational Period:</b>	Date From: 7/7/20 Time From: 0700	Date To: 7/8/20 Time To: 0700
-----------------------------------	-------------------------------	--------------------------------------	----------------------------------

S  
A  
F  
E  
T  
Y  
  
S  
A  
F  
E  
T  
Y  
  
S  
A  
F  
E  
T  
Y

Steep winding roads are throughout the incident. Slow down when driving on loose gravel and blind curves. Drive defensively with headlights on and use hands free devices.

Working on steep, uneven terrain. Be mindful of rolling materials.

Ensure radios are properly programmed for today's IAP and that crews are trained in communications procedures for the incident.

Maintain situational awareness. Look up, Look down, Look around.

Stay hydrated!!! Time to think = Time to drink. Document rest and hydration on 214.

Remain mindful of what is going on around you! LCES!

HEADS UP!!! Lookout for SNAGS when working around areas with burned trees. Evaluate all wind damaged trees with large limbs before working under around them.

Avoid complacency!!!! Experiencing extreme fire behavior due to low live and dead fuel moistures, persistent drought, and elevated fire danger rating values.

We are ALL accountable for SAFE behaviors and PREVENTING the possible spread of COVID-19.

Wash hands often with soap and water for a minimum of 20 seconds. Keep hand sanitizer nearby. Disinfect vehicle and any PPE often.

Practice social distancing of 6ft or greater. Take part in daily self-assessment, report negative findings to your supervisor. Wear a mask when you cant provide for 6ft or greater.

I  
T  
S  
U  
P  
T  
O  
Y  
O  
U  
!!!

<b>5. Prepared By:</b> J. Segura / J. Novak (T)	Position/Title: SOFR	<i>Jorge H. Segura</i>
ICS 208	Date/Time: 7/6/2020 / 2020	

## INCIDENT ACTION PLAN SAFETY ANALYSIS (ICS 215A)

<b>1. Incident Name:</b> CREWS	<b>2. Operational Period:</b>	Date From: 7/7/20 Time From: 0700	Date To: 7/8/20 Time To: 0700
Incident Area	Hazard/Risks	Mitigations	
ALL	FATIGUE	Be alert for signs of fatigue and take breaks as necessary. Drink water before, during and after your shift. Be alert for signs of heat disorder in yourself and others.	
ALL	DRIVING HAZARDS	Drive defensively! Expect the unexpected around every turn. Drive with headlights on, use wheel chocks and always look before backing. Increase following distances on dusty roads.	
ALL	WEATHER	Be thoroughly familiar with weather predictions and monitor conditions on the ground for changes. Carry proper equipment	
ALL	DEHYDRATION	Drink water before, during, and after your shift. Logistics will have water available.	
ALL	ANIMAL ATTACK	Keep distance from animals and identify aggressive animals. Be mindful of any injuries that could develop into infection.	
ALL	COVID-19	Practice social distance of 6 ft or greater Maintain constant hygiene & handwashing. Wear mask when you can't provide for 6ft distance.	
<b>5. Prepared By:</b>		Position/Title: SOFR	<i>Jorge H Segura</i>
ICS 215A	Date/Time:	7/6/2020 / 2030	





# ASSIGNMENT LIST (ICS 204 WF)

CONTROLLED UNCLASSIFIED  
INFORMATION//BASIC

<b>1. Incident Name:</b> <div style="text-align: center; padding: 5px;"><b>CREWS</b></div>	<b>2. Operational Period:</b> Date From: 07/07/20    Date To: 07/08/20 Time From: 0700          Time To: 0700	<b>3. Branch</b> <b>Division</b> <div style="text-align: center; padding: 10px;"><b>I</b>                          <b>D</b></div> Page 1 of 1                  Delta
---	---	--

<b>4. Operations Personnel:</b>	
Operations Section Chief: <b>T. Ernst / R. Janssen / M. Martinez</b> Branch Director: <b>K. Bohall</b> Division/Group Supervisor: <b>K. Ryan</b>	Night Ops: <b>S. Lauderdale</b> Branch Safety: Air Attack: <b>L. Kalfsbeek</b>

5. Resources Assigned:	** Resources Below in Bold are 12 Hour **						
Resource Identifier	ALS	LWD	Leader	Personnel	Request #	Hours	Reporting Location
STC 9141C			Aragon		E-	0700-0700	Jamieson x Cañada
<b>STC 3660C</b>				26	<b>E-</b>	<b>0700-1900</b>	<b>Jamieson x Cañada</b>
STG					E-	0700-0700	Jamieson x Cañada
STG					E-	0700-0700	Jamieson x Cañada
DOZ PVT E-43			Barrajas	2	E-43	0700-0700	Jamieson x Cañada
WT PVT E-79			Newman	2	E-79	0700-0700	Jamieson x Cañada
WT					E-	0700-0700	Jamieson x Cañada

**6. Work Assignments:**  
 Construct and hold line utilizing direct tactics.  
 Improve direct fire line. Mop up 100' in from control line.

**7. Special Instructions:**

8. Communications							
Name	Ch	Function	Rx Freq	Rx Tone	Tx Freq	Tx Tone	Notes
CDF C1	1	COMMAND	151.3550N	T8 - 103.5	159.3000N	T9 - 100.0	LOMA PRIETA MTN.
CDF T28	6	TACTICAL	151.1825N	T16 - 192.8	151.1825N	T16 - 192.8	BRANCH I
CDF T15	14	AIR TO GROUND	159.2700N	T16 - 192.8	159.2700N	T16 - 192.8	AIR TO GROUND
CALCORD	15	MEDICAL	156.0750N	T6 - 156.7	156.0750N	T6 - 156.7	MEDICAL COORDINATION
GUARD7	16	AIRGUARD	168.6250N		168.6250N	T1 - 110.9	EMERGENCY USE ONLY

<b>9. Prepared by: Name:</b> T. Byrd Date/Time: 7/6/2020 2200	RESL Signature: <i>(Handwritten Signature)</i>	Personnel Count: 30
--	---	---------------------

# ASSIGNMENT LIST (ICS 204 WF)

CONTROLLED UNCLASSIFIED  
INFORMATION//BASIC

<b>1. Incident Name:</b>  <b style="text-align: center;">CREWS</b>	<b>2. Operational Period:</b> Date From: 07/07/20    Date To: 07/08/20 Time From: 0700    Time To: 0700	<b>3. Branch</b> <b>Division</b>  <b style="text-align: center;">III</b> <b style="text-align: center;">M</b>
--	---	---

<b>4. Operations Personnel:</b>		<b>Page 1 of 1</b> <b>Mike</b>
Operations Section Chief: <b>T. Ernst / R. Janssen / M. Martinez</b>	Night Ops: <b>S. Lauderdale</b>	
Branch Director: <b>S. Lane / Caspi (T)</b>	Branch Safety:	
Division/Group Supervisor: <b>S. Rohrs/ J. Burges (T)</b>	Air Attack: <b>L. Kalfsbeek</b>	

<b>5. Resources Assigned:</b>		<b>** Resources Below in Bold are 12 Hour **</b>					
Resource Identifier	ALS	LWD	Leader	Personnel	Request #	Hours	Reporting Location
<b>STC 3675C</b>				26	<b>E-</b>	<b>0700-1900</b>	<b>Jamieson x Cañada</b>
STC 9171C					E-16	0700-0700	Jamieson x Cañada
STC					E-	0700-0700	Jamieson x Cañada
STG 9275G			Drummond		C-	0700-0700	Jamieson x Cañada
IHC Elk Mountain					C-10	0700-0700	Jamieson x Cañada
IHC Feather River					C-9	0700-0700	Jamieson x Cañada
STL 9142L			Baker		E-	0700-0700	Jamieson x Cañada
WT PVT E-87			Estrada	2	E-87	0700-0700	Jamieson x Cañada
WT PVT E-77			Sasser	2	E-77	0700-0700	Jamieson x Cañada
WT PVT E-26			Qualls	2	E-26	0700-0700	Jamieson x Cañada

**6. Work Assignments:**  
Construct and hold line utilizing direct tactics.  
Improve direct fire line. Mop up 100' in from control line.

**7. Special Instructions:**

<b>8. Communications</b>							
Name	Ch	Function	Rx Freq	Rx Tone	Tx Freq	Tx Tone	Notes
CDF C1	1	COMMAND	151.3550N	T8 - 103.5	159.3000N	T9 - 100.0	LOMA PRIETA MTN.
VFIRE 25	7	TACTICAL	154.2875N	T6 - 156.7	154.2875N	T6 - 156.7	BRANCH III
CDF T15	14	AIR TO GROUND	159.2700N	T16 - 192.8	159.2700N	T16 - 192.8	AIR TO GROUND
CALCORD	15	MEDICAL	156.0750N	T6 - 156.7	156.0750N	T6 - 156.7	MEDICAL COORDINATION
GUARD7	16	AIRGUARD	168.6250N		168.6250N	T1 - 110.9	EMERGENCY USE ONLY

**9. Prepared by: Name:**    T. Byrd    RESL    Signature:   
**ICS 204**    Date/Time: 7/6/2020    2200    Personnel Count: 32

# ASSIGNMENT LIST (ICS 204 WF)

CONTROLLED UNCLASSIFIED  
INFORMATION//BASIC

<b>1. Incident Name:</b> <b>CREWS</b>	<b>2. Operational Period:</b> Date From: 07/07/20 Date To: 07/08/20 Time From: 0700 Time To: 0700	<b>3. Branch</b> <b>III</b>	<b>Division</b> <b>P</b>
--	---	--------------------------------	-----------------------------

<b>4. Operations Personnel:</b> Operations Section Chief: <b>T. Ernst / R. Janssen / M. Martinez</b> Branch Director: <b>S. Lane / Caspi (T)</b> Division/Group Supervisor: <b>L. Ermigaret/ G. Dean (T)</b>	Night Ops: <b>S. Lauderdale</b> Branch Safety: Air Attack: <b>L. Kalfsbeek</b>
---	--

Page 1 of 1

Papa

**5. Resources Assigned:** \*\* Resources Below in Bold are 12 Hour \*\*


Resource Identifier	ALS	LWD	Leader	Personnel	Request #	Hours	Reporting Location
STC					E-	0700-0700	Pacheco Station
STC					E-	0700-0700	Pacheco Station
DOZ PVT E-39			Bishop	2	E-39	0700-0700	Pacheco Station
DOZ PVT E-40			Roan	2	E-40	0700-0700	Pacheco Station
DOZ PVT E-41			Avila	2	E-41	0700-0700	Pacheco Station
WT PVT E-80			Anderson	2	E-80	0700-0700	Pacheco Station

**6. Work Assignments:**  
Construct and hold line utilizing direct tactics.  
Improve direct fire line. Mop up 100' in from control line.

**7. Special Instructions:**

**8. Communications**

Name	Ch	Function	Rx Freq	Rx Tone	Tx Freq	Tx Tone	Notes
CDF C1	1	COMMAND	151.3550N	T8 - 103.5	159.3000N	T9 - 100.0	LOMA PRIETA MTN.
VFIRE 26	8	TACTICAL	154.3025N	T6 - 156.7	154.3025N	T6 - 156.7	BRANCH III
CDF T15	14	AIR TO GROUND	159.2700N	T16 - 192.8	159.2700N	T16 - 192.8	AIR TO GROUND
CALCORD	15	MEDICAL	156.0750N	T6 - 156.7	156.0750N	T6 - 156.7	MEDICAL COORDINATION
GUARD7	16	AIRGUARD	168.6250N		168.6250N	T1 - 110.9	EMERGENCY USE ONLY

<b>9. Prepared by: Name:</b> T. Byrd	RESL	Signature: 
<b>ICS 204</b>	Date/Time: 7/6/2020 2200	Personnel Count: 8

# ASSIGNMENT LIST (ICS 204 WF)

CONTROLLED UNCLASSIFIED  
INFORMATION//BASIC

<b>1. Incident Name:</b>	<b>2. Operational Period:</b>	<b>3. Branch</b>	<b>Division</b>
<b>CREWS</b>	Date From: 07/07/20    Date To: 07/08/20 Time From: 0700    Time To: 0700	<b>III</b>	<b>S</b>
<b>4. Operations Personnel:</b>		Page 1 of 1	Sierra

Operations Section Chief: <b>T. Ernst / R. Janssen / M. Martinez</b>	Night Ops: <b>S. Lauderdale</b>
Branch Director: <b>S. Lane / Caspi (T)</b>	Branch Safety:
Division/Group Supervisor: <b>M. Jonsson</b>	Air Attack: <b>L. Kalfsbeek</b>

5. Resources Assigned:      ** Resources Below in Bold are 12 Hour **							
Resource Identifier	ALS	LWD	Leader	Personnel	Request #	Hours	Reporting Location
STC 9150C			Pierce		E-	0700-0700	Jamieson x Cañada
STC					E-	0700-0700	Jamieson x Cañada
ENG 4685					E-	0700-0700	Jamieson x Cañada
STG						0700-0700	Jamieson x Cañada
STG						0700-0700	Jamieson x Cañada
STG						0700-0700	Jamieson x Cañada
STG						0700-0700	Jamieson x Cañada
STL 9118L			Taglio		E-	0700-0700	Jamieson x Cañada
WT PVT E-81			Vincent	2	E-81	0700-0700	Jamieson x Cañada
WT PVT E-83			Kelly	2	E-83	0700-0700	Jamieson x Cañada
WT						0700-0700	Jamieson x Cañada
WT						0700-0700	Jamieson x Cañada

**6. Work Assignments:**  
 Construct and hold line utilizing direct tactics.  
 Improve direct fire line. Mop up 100' in from control line.

**7. Special Instructions:**

8. Communications							
Name	Ch	Function	Rx Freq	Rx Tone	Tx Freq	Tx Tone	Notes
CDF C1	1	COMMAND	151.3550N	T8 - 103.5	159.3000N	T9 - 100.0	LOMA PRIETA MTN.
CDF T35	9	TACTICAL	159.3225N	T16 - 192.8	159.3225N	T16 - 192.8	BRANCH III
CDF T15	14	AIR TO GROUND	159.2700N	T16 - 192.8	159.2700N	T16 - 192.8	AIR TO GROUND
CALCORD	15	MEDICAL	156.0750N	T6 - 156.7	156.0750N	T6 - 156.7	MEDICAL COORDINATION
GUARD7	16	AIRGUARD	168.6250N		168.6250N	T1 - 110.9	EMERGENCY USE ONLY

<b>9. Prepared by: Name:</b>	T. Byrd	RESL	Signature:
<b>ICS 204</b>	Date/Time: 7/6/2020	2200	Personnel Count: 4

# ASSIGNMENT LIST (ICS 204 WF)

CONTROLLED UNCLASSIFIED  
INFORMATION//BASIC

<b>1. Incident Name:</b> <p style="text-align: center; font-weight: bold; font-size: 1.2em;">CREWS</p>	<b>2. Operational Period:</b> Date From: 07/07/20    Date To: 07/08/20 Time From: 0700    Time To: 0700	<b>3. Branch</b> <b>Division</b> <p style="text-align: center; font-weight: bold; font-size: 1.2em;">Staging</p>
---	---	---

Page 1 of 1

<b>4. Operations Personnel:</b> Operations Section Chief: <b>T. Ernst / R. Janssen / M. Martinez</b> Branch Director: Division/Group Supervisor: <b>J. Smith</b>	Night Ops: <b>S. Lauderdale</b> Branch Safety: Air Attack: <b>L. Kalfsbeek</b>
---	--

5. Resources Assigned:		** Resources Below in Bold are 12 Hour **					
Resource Identifier	ALS	LWD	Leader	Personnel	Request #	Hours	Reporting Location
DOZ PVT E-38			<b>Winovich</b>	2	<b>E-38</b>	<b>0700-1900</b>	<b>Christmas Hill Park</b>
DOZ PVT E-43			<b>Barrajas</b>	2	<b>E-43</b>	<b>0700-1900</b>	<b>Christmas Hill Park</b>
DOZ PVT E-36			<b>Fox</b>	2	<b>E-36</b>	<b>0700-1900</b>	<b>Christmas Hill Park</b>
DOZ PVT E-37			<b>Miser</b>	2	<b>E-37</b>	<b>0700-1900</b>	<b>Christmas Hill Park</b>
DOZ PVT E-42			<b>Worrell</b>	2	<b>E-42</b>	<b>0700-1900</b>	<b>Christmas Hill Park</b>
DOZ PVT E-35			<b>RBI</b>	2	<b>E-35</b>	<b>0700-1900</b>	<b>Christmas Hill Park</b>

**6. Work Assignments:**  
 Maintain 3 minute response time.  
 Monitor command frequencies.

**7. Special Instructions:**

8. Communications							
Name	Ch	Function	Rx Freq	Rx Tone	Tx Freq	Tx Tone	Notes
CDF C1	1	COMMAND	151.3550N	T8 - 103.5	159.3000N	T9 - 100.0	LOMA PRIETA MTN.
CDF T15	14	AIR TO GROUND	159.2700N	T16 - 192.8	159.2700N	T16 - 192.8	AIR TO GROUND
CALCORD	15	MEDICAL	156.0750N	T6 - 156.7	156.0750N	T6 - 156.7	MEDICAL COORDINATION
GUARD7	16	AIRGUARD	168.6250N		168.6250N	T1 - 110.9	EMERGENCY USE ONLY

<b>9. Prepared by: Name:</b>	T. Byrd	RESL	
<b>ICS 204</b>	Date/Time: 7/6/2020	2200	Signature: Personnel Count: 12




# ICS 205 - INCIDENT RADIO COMMUNICATIONS PLAN

CONTROLLED UNCLASSIFIED  
INFORMATION//BASIC

1. Incident Name: <b>CREWS</b> Incident Channels		2. Date/Time Prepared Date: 07/06/2020 Time: 1930		3. Operational Period: Date From: 07/07/20 Time From: 0700		Date To: 07/08/20 Time To: 0700	
--	--	---	--	--	--	------------------------------------	--

4. Communications								
Ch#	Function	Name	Assigned To	Rx Freq	Rx Tone	Tx Freq	Tx Tone	Notes
1	COMMAND	CDF C1	ALL BRANCHES	151.3550N	T8 - 103.5	159.3000N	T9 - 100.0	LOMA PRIETA MTN.
2								
3								
4								
5	TACTICAL	CDF T26	DIV AYY	159.2925N	T16 - 192.8	159.2925N	T16 - 192.8	BRANCH I
6	TACTICAL	CDF T28	DIV D	151.1825N	T16 - 192.8	151.1825N	T16 - 192.8	BRANCH I
7	TACTICAL	VFIRE 25	DIV M	154.2875N	T6 - 156.7	154.2875N	T6 - 156.7	BRANCH III
8	TACTICAL	VFIRE 26	DIV P	154.3025N	T6 - 156.7	154.3025N	T6 - 156.7	BRANCH III
9	TACTICAL	CDF T35	DIV S	159.3225N	T16 - 192.8	159.3225N	T16 - 192.8	BRANCH III
10								
11								
12								
13	TACTICAL	VTAC14	RADIO BRIEFING	159.4725N	T6 - 156.7	159.4725N	T6 - 156.7	
14	AIR TO GROUND	CDF T15	ALL BRANCHES	159.2700N	T16 - 192.8	159.2700N	T16 - 192.8	AIR TO GROUND
15	MEDICAL	CALCORD	ALL BRANCHES	156.0750N	T6 - 156.7	156.0750N	T6 - 156.7	MEDICAL COORDINATION
16	AIRGUARD	GUARD7	ALL BRANCHES	168.6250N		168.6250N	T1 - 110.9	EMERGENCY USE ONLY
17								
18								
19								
20	AIRGUARD	GUARD7	ALL BRANCHES	168.6250N		168.6250N	T1 - 110.9	EMERGENCY USE ONLY



5. Special Instructions

6. Prepared by (Communications Unit Leader): Name: JOHN BROOKS, IMT 6 COML		Signature: 	
ICS 205 - CONTROLLED UNCLASSIFIED INFORMATION//BASIC		Date/Time: 07/06/20 1930	



The Operational  
Briefing will be  
broadcast at **0700** on  
**VTAC14**

## MEDICAL PLAN (ICS 206)

<b>1. Incident Name:</b> <p style="text-align: center;"><b>CREWS</b></p>		<b>2. Operational Period:</b> Date From: 7/7/20 Date To: 7/8/20 Time From: 0700 Time To: 0700					
<b>3. Medical Aid Stations:</b>							
Name	Location	Contact Number/Freq	Paramedics				
CAL MAT	ICP	916-247-1940	Yes				
<b>4. Transportation (indicate air or ground):</b>							
Ambulance Service	Location	Contact Number	Level of Service				
AMR Santa Clara Medic 51	Canada and HWY152	CMD	ALS				
AMR Santa Clara Medic 58	Canada and HWY 152	CMD	ALS				
<b>5. Hospitals:</b>							
Hospital Name	Address,	Contact Number(s)/ Frequency	Travel Time		Trauma Center	Burn Center	Helipad
	Lat & Long Helipad		Air	Ground			
Saint Louise Regional Med	9400 No Name Uno, Gilroy, CA Lat/Long: N37.02.13, W121. 34.27	(408)848-8680	5 MIN	10 MIN	Level 2	<input type="checkbox"/>	<input checked="" type="checkbox"/>
Santa Clara Regional Medical Center	225 North Jackson Ave., San Jose, CA 95116-1691, Lat/Long: N37.18.85, W121.56.05	(408) 259-5000	10 MIN	30 MIN	Level 2	<input type="checkbox"/>	<input checked="" type="checkbox"/>
Santa Clara Valley Medical Center	751 S. Bascom Ave., San Jose, CA 95128, Lat/Long: N37.18.85, W121.56.05	(408) 885-5000	10 MIN	40 MIN	Level 1	<input checked="" type="checkbox"/>	<input checked="" type="checkbox"/>
						<input type="checkbox"/>	<input type="checkbox"/>
						<input type="checkbox"/>	<input type="checkbox"/>
<b>6. Special Medical Emergency Procedures</b>							
<b>Line Emergency</b> Crew Supervisor will contact Division Supervisor with patient complaint/condition and location. - Division Group Supervisor Contacts: 1. Closest EMS resource 2. Communications Unit - Communications Unit Contacts: 1. Ground or Air ambulance as requested. 2. Operations 3. Safety 4. Medical Unit - Division Supervisor or designee will serve as point of contact and run medical emergency on assigned channel. 1. A pre-assigned tactical frequency (i.e. CALCORD) should be used for IWI and only for duration of the emergency. - Communications Unit will clear the Command channel for emergency traffic as needed for duration of the need.				<b>Injury Reporting Procedures</b>  Nature of Injury: _____ Location of Patient: _____ Point of Contact: _____ Transportation Requested by: Air _____ Ground _____ Point of Pick-Up: _____ Lat: _____ Long: _____ Patient Unit ID: _____ Is an EMT with Patient: Yes _____ No _____ Age: _____ Sex: Male _____ Female _____			
<b>Camp Emergency</b> Contact Medical Unit with patient complaint/condition and location. Medical staff will respond to stabilize the patient. - Medical Unit contacts 1. Communications 2. Safety 3. Logistics 4. Operations 5. Crew Supervisor 6. Comp/Claims				<b>All Emergencies - Secure the area and identified witnesses for later investigation. Keep accurate log of events.</b>			
<input type="checkbox"/> Check box if aviation assets are utilized for rescue. If assets are used, coordinate with Air Operations.							
<b>7. Prepared by (Medical Unit Leader):</b> <p style="text-align: center;">C. McGary</p>				Signature: 			
<b>8. Approved by (Safety Officer):</b> <p style="text-align: center;">J. Segura / J. Novak (T)</p>				Signature: 			
ICS 206		NIMS IAP		Date/Time:		5/7/06/20 1930	

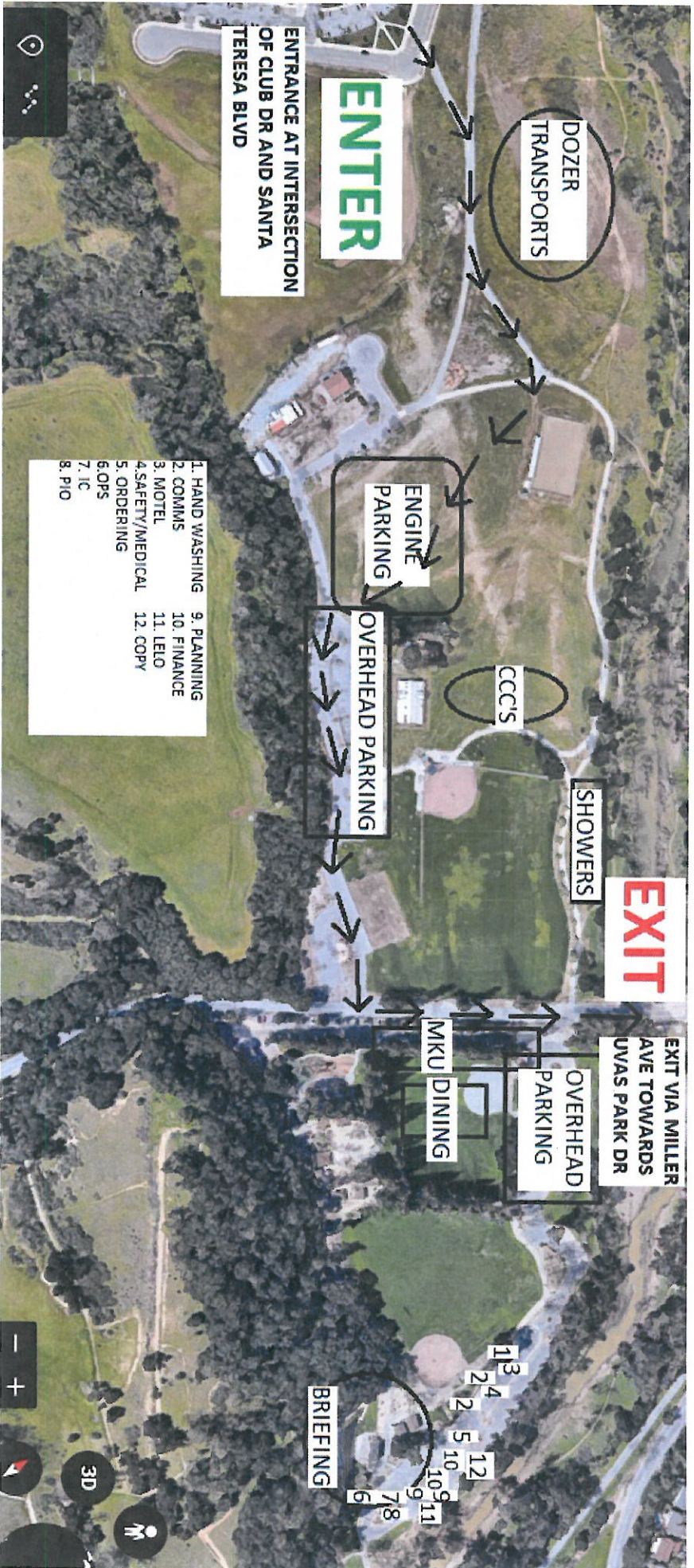
# SHIFT TICKET EXAMPLE

EMERGENCY SHIFT TICKET and EVALUATION FORM					Contractor Name	
Incident or Project Name <b>CREWS</b>			Incident Number <b>CASCU 004686</b>		Request Number <b>E#</b>	
Agreement Number <b>XXX - 000000 - 00</b>					Operator #1 <b>BOB SMITH</b>	
Equipment Make <b>CAT</b>			Equipment Model / Type <b>D6XM</b>			
Serial Number <b>111111</b>			Licence Number <b>111111</b>			
Equipment Use						
Date	Start	Stop	Work	(Circle) <b>Hours</b>	Days / Miles	
Mo / Day					Assignment	
7/6	0700	2400	17		DIV M	
7/7	0001	0700	7		DIV M	
Vendor Rating					Govt. Rep. Name and Position - PRINT	
	Poor*	Avg.	Good	Exc.	N/A	
Met Performance Expectations					Govt. Rep. Signature	
Equipment in Safe Working Condition					<i>Mike Weber</i>	
Operator Skill Level					Contractor Signature	
Operates Safely					<i>Bob Smith</i>	
Operator's Cooperation Level					Date	Time
Overall Performance					<b>07/07/20</b>	<b>0800</b>
* NOTE: Any rating of POOR requires an explanation in Comment Section.					CALFIRE 297	
**Final evaluation or for more documentation, use an ICS Form 230 or equivalent.					(Rev 3-2011)	
Pink - Finance		Blue - Home Unit HE Coordinator		Yellow - Vendor		White - Govt Representative

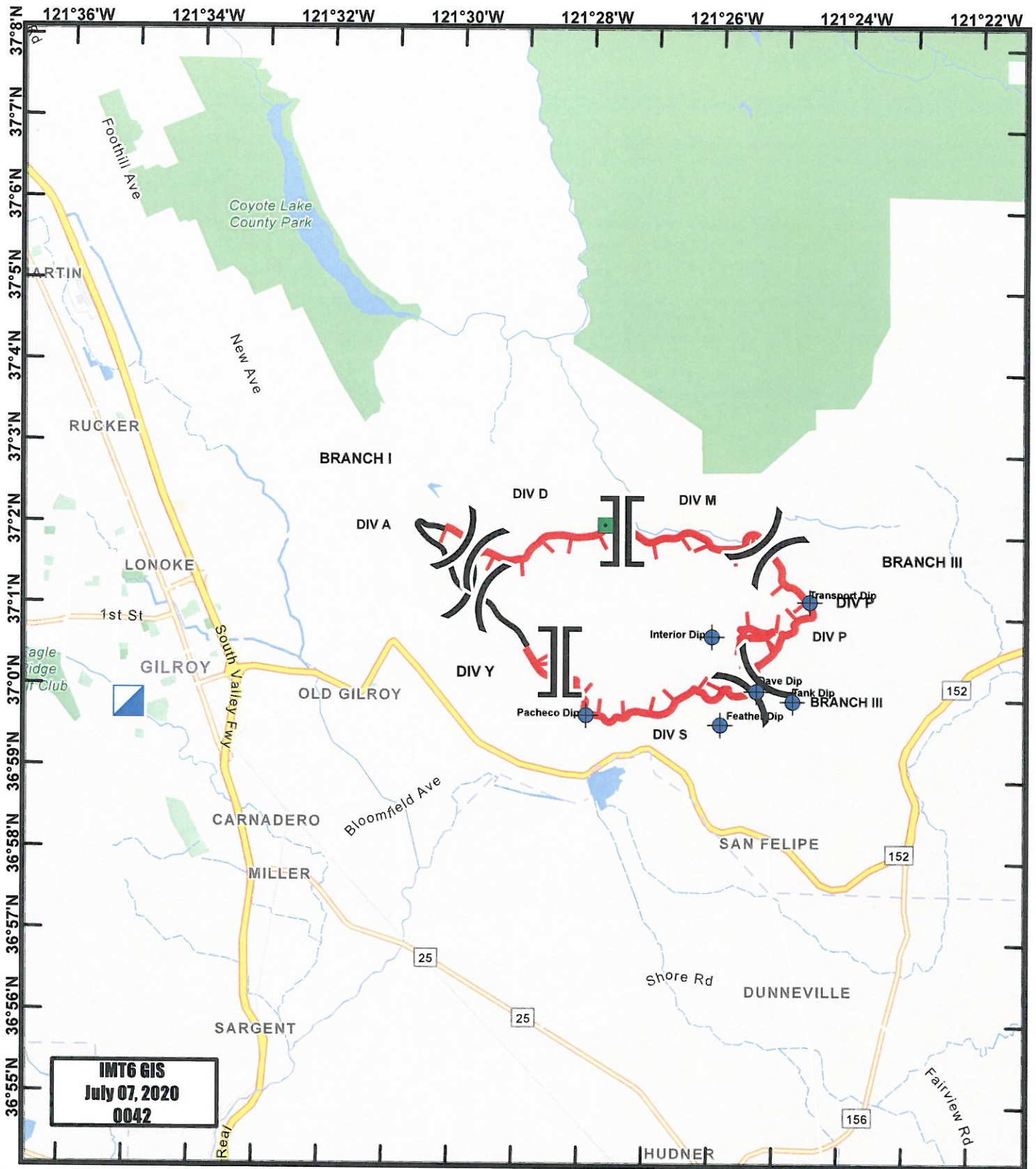
EMERGENCY SHIFT TICKET and EVALUATION FORM					Contractor Name	
The responsible Government Officer will complete this form each shift						
Incident or Project Name <b>CREWS</b>			Incident Number <b>CASCU 004686</b>		Request Number <b>E # Here</b>	
Agreement Number <b>XXX - 000000 - 00</b>					Operator #1 <b>BOB SMITH</b>	
Equipment Make <b>TRANSPORT/ KENWORTH</b>			Equipment Model / Type <b>COZAD TRAILER /26 WHEELS</b>			
Serial Number <b>1XP3ESMP14239012</b>			Licence Number <b>9999999</b>			
Equipment Use						
Date	Start	Stop	Work	(Circle) <b>Hours</b>	Days / Miles	
Mo / Day					Assignment	
7/6	0700	2400	17		DIV M	
7/7	0001	0700	7		DIV M	
Vendor Rating					Govt. Rep. Name and Position - PRINT	
	Poor*	Avg.	Good	Exc.	N/A	
Met Performance Expectations					Govt. Rep. Signature	
Equipment in Safe Working Condition					<i>Mike Weber</i>	
Operator Skill Level					Contractor Signature	
Operates Safely					<i>Bob Smith</i>	
Operator's Cooperation Level					Date	Time
Overall Performance					<b>07/07/20</b>	<b>0800</b>
* NOTE: Any rating of POOR requires an explanation in Comment Section.					CALFIRE 297	
**Final evaluation or for more documentation, use an ICS Form 230 or equivalent.					(Rev 3-2011)	
Pink - Finance		Blue - Home Unit HE Coordinator		Yellow - Vendor		White - Govt Representative

**Turn shift tickets into Finance.**

# CREWS INCIDENT BASE CAMP MAP







IMT6 GIS  
 July 07, 2020  
 0042



**Travel Map**  
**Crews Incident**  
**CA-SCU-004648**  
**July 7, 2020**





