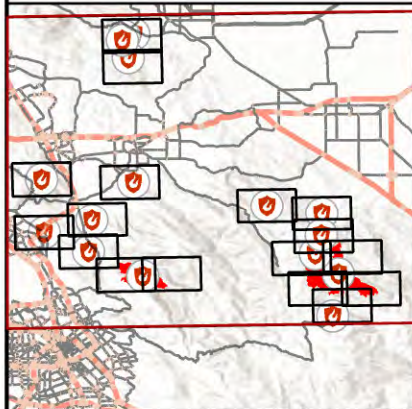


IAP Map

SCU Incident
CASC005772
8/18/2020

Page: 0

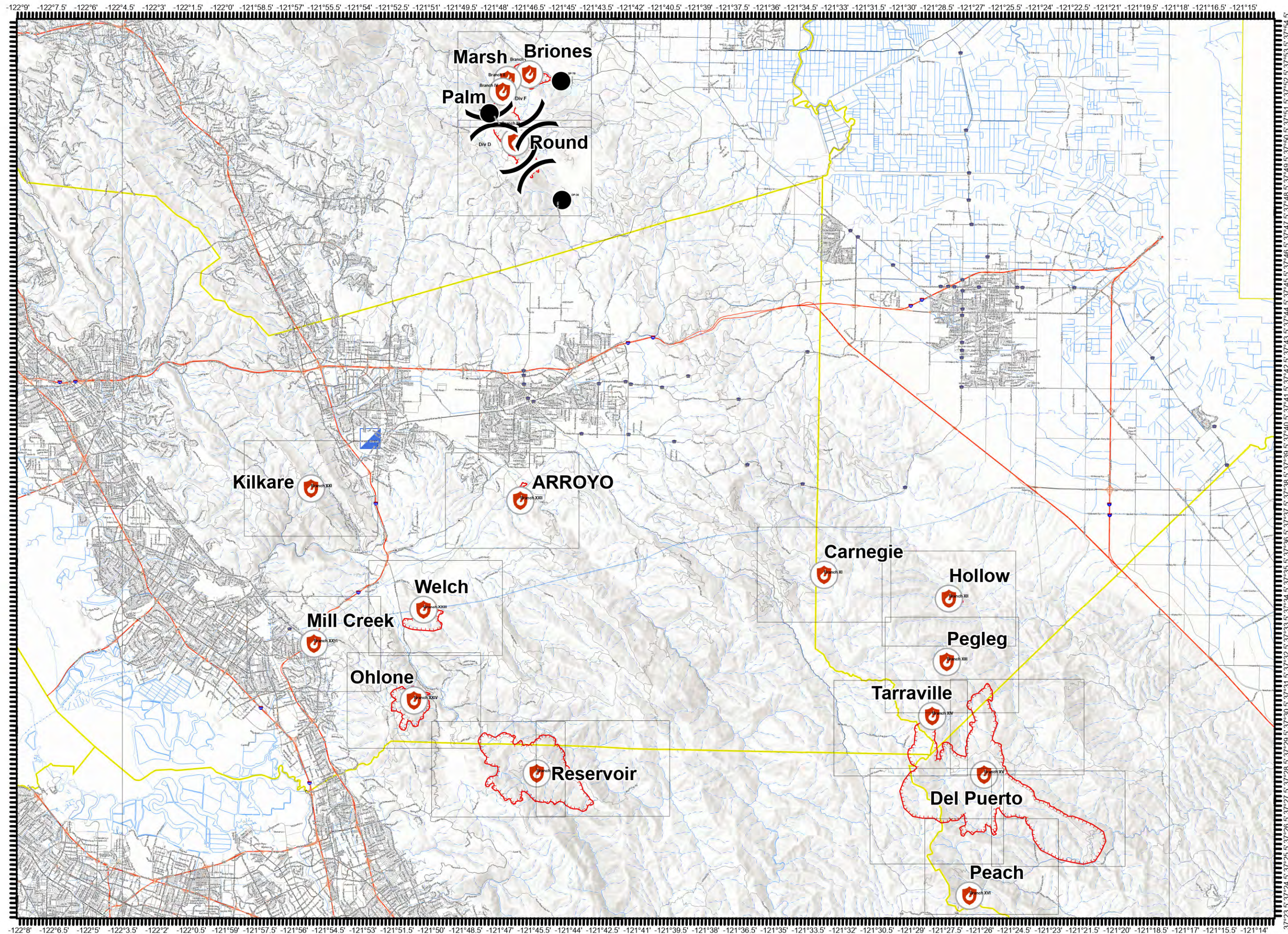


DISCLAIMER:
The displayed incident data is approximate and should only be used for informational purposes. The information contained in supporting base layers was generated from GIS data maintained by different sources and agencies and is not necessarily accurate to mapping, surveying, or engineering standards.

1:226,000



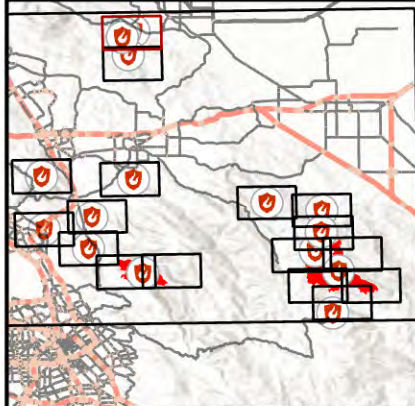
8/18/2020
0021 Hours



IAP Map

SCU Incident
CASC005772
8/18/2020

Page: 1

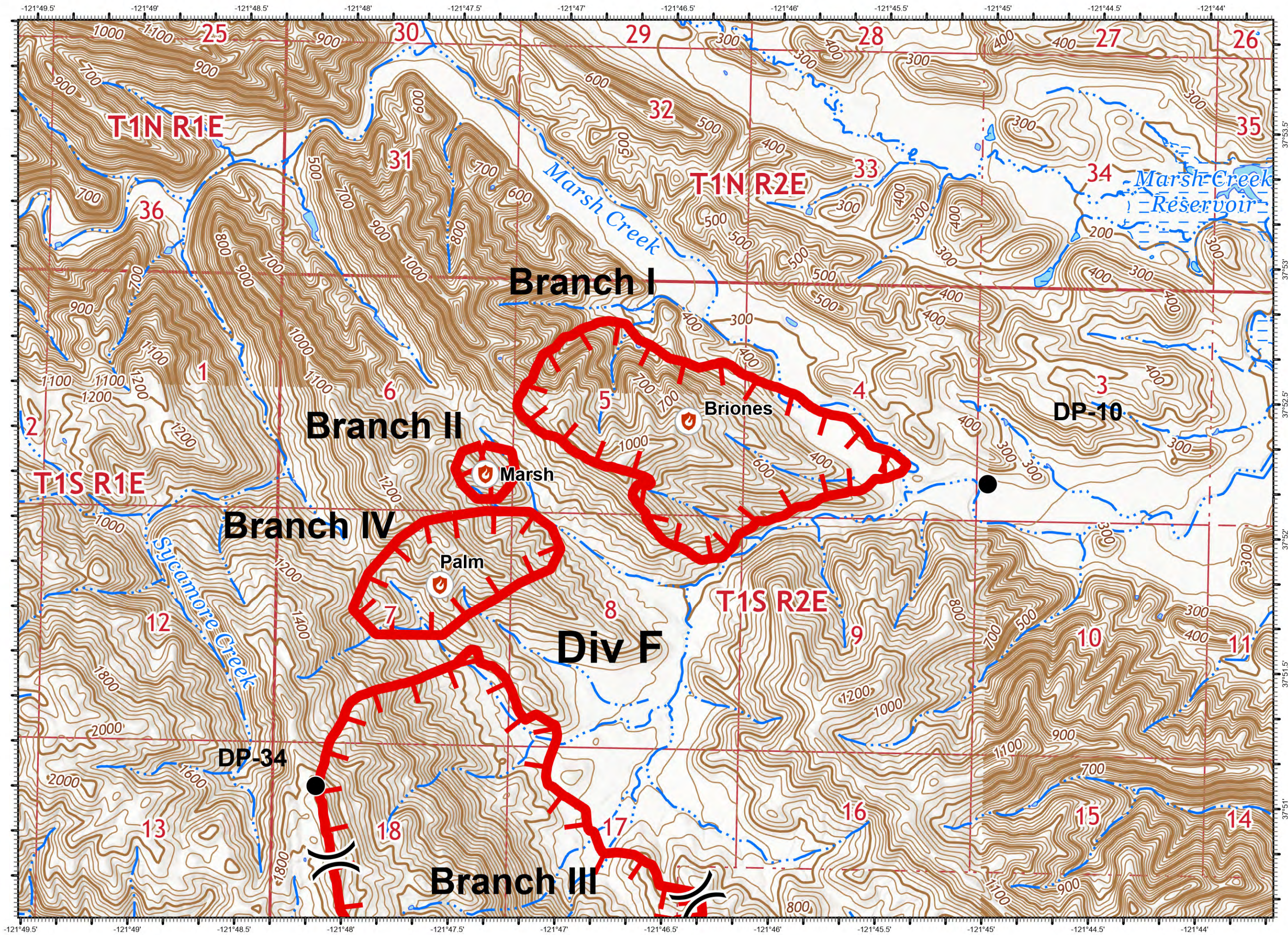


DISCLAIMER:
The displayed incident data is approximate and should only be used for informational purposes. The information contained in supporting base layers was generated from GIS data maintained by different sources and agencies and is not necessarily accurate to mapping, surveying, or engineering standards.

1:24,000



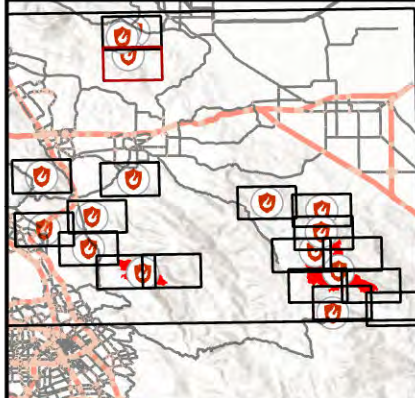
8/18/2020
0004 Hours



IAP Map

SCU Incident
CASCU005772
8/18/2020

Page: 2

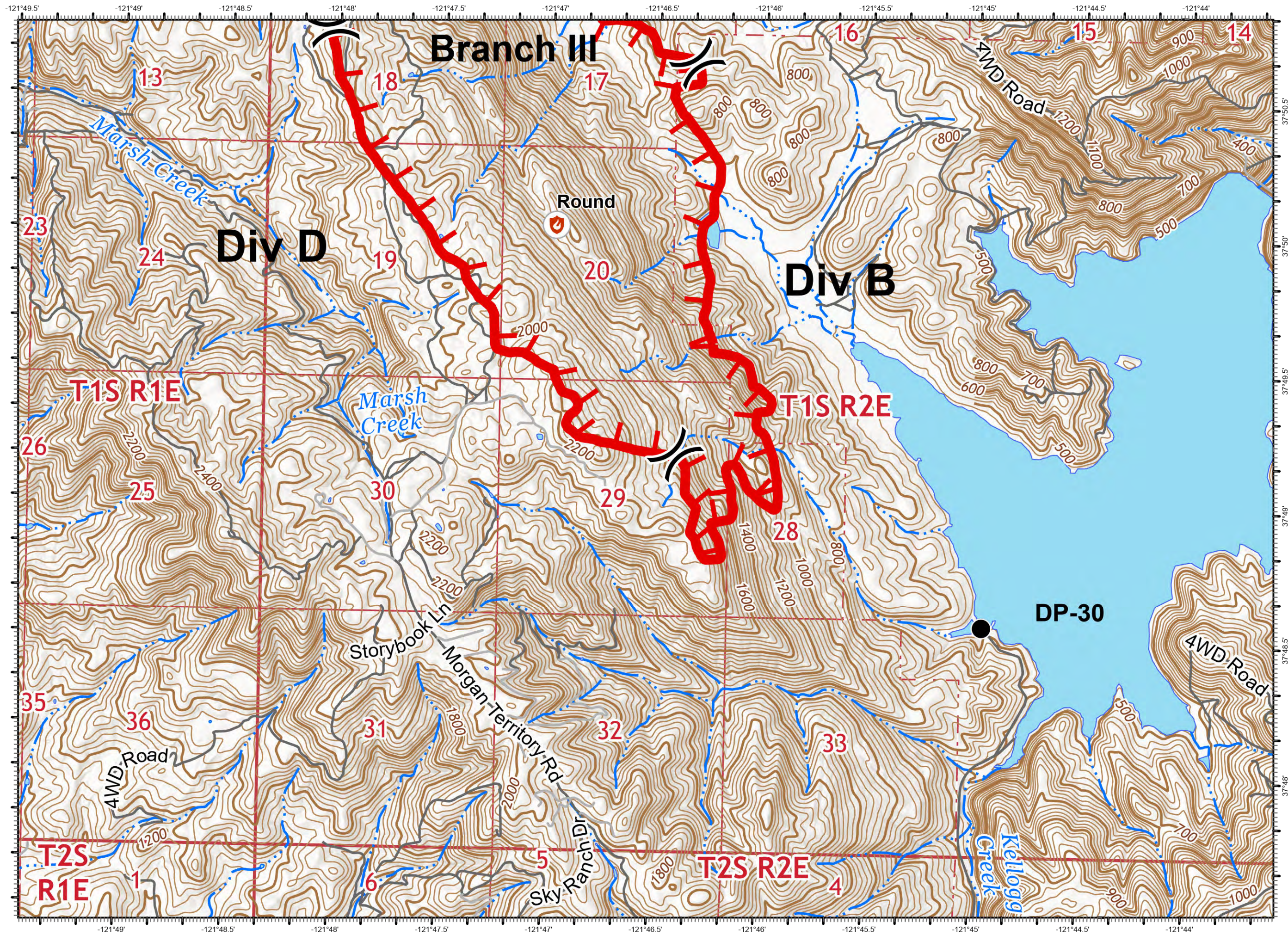


DISCLAIMER:
The displayed incident data is approximate and should only be used for informational purposes. The information contained in supporting base layers was generated from GIS data maintained by different sources and agencies and is not necessarily accurate to mapping, surveying, or engineering standards.

1:24,000



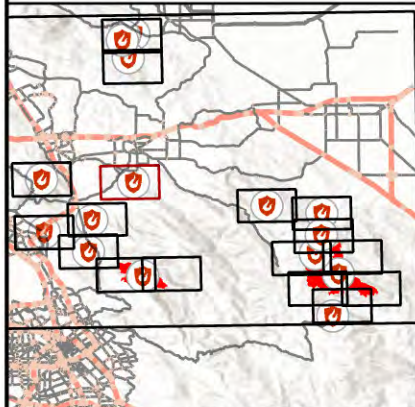
8/18/2020
0040 Hours



IAP Map

SCU Incident
CASCU005772
8/18/2020

Page: 3

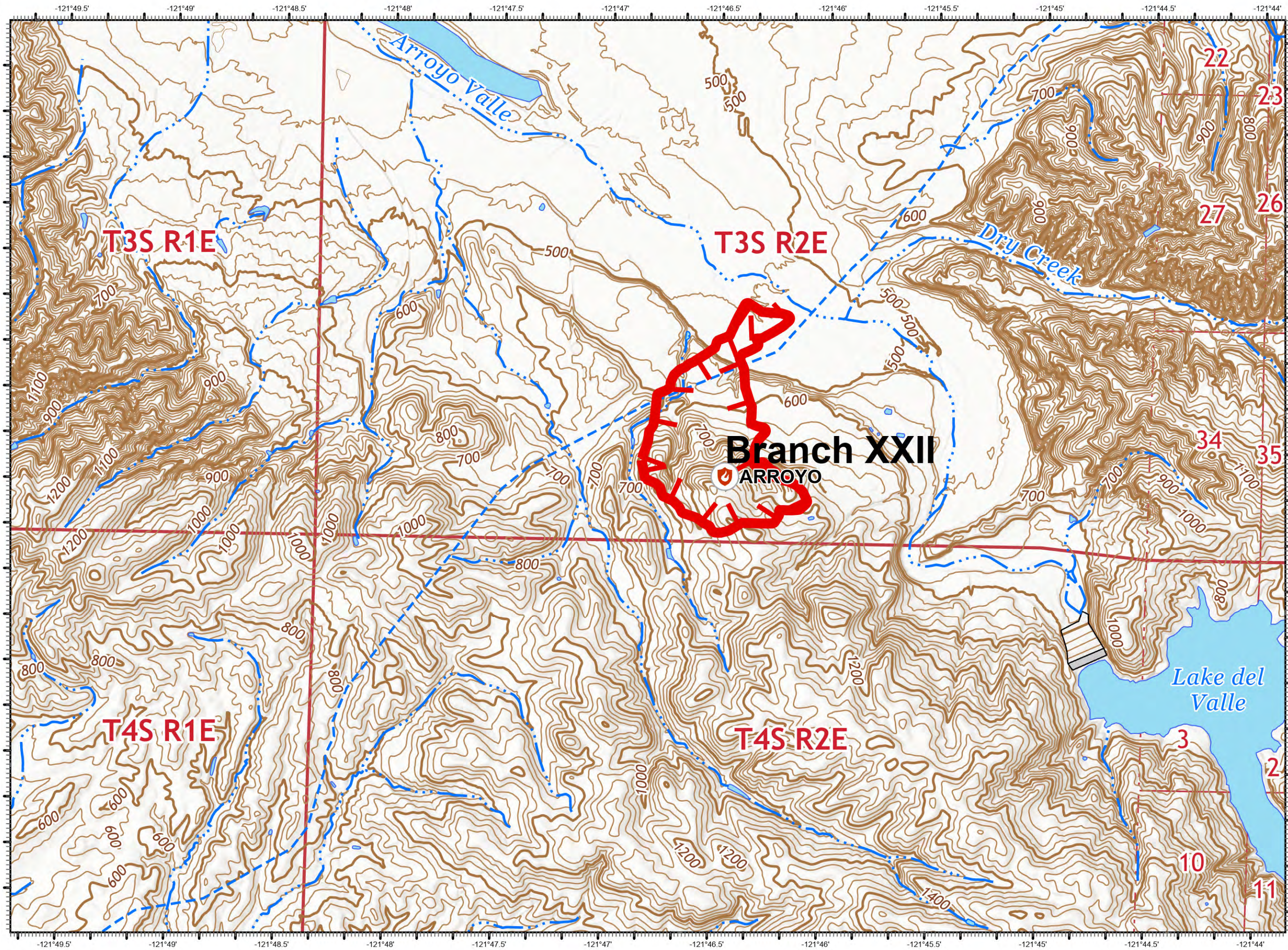


DISCLAIMER:
The displayed incident data is approximate and should only be used for informational purposes. The information contained in supporting base layers was generated from GIS data maintained by different sources and agencies and is not necessarily accurate to mapping, surveying, or engineering standards.

1:24,000



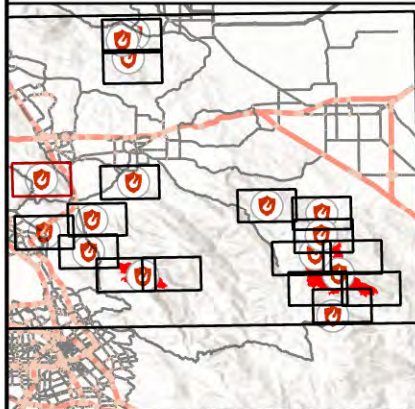
8/18/2020
0004 Hours



IAP Map

SCU Incident
CASCU005772
8/18/2020

Page: 4

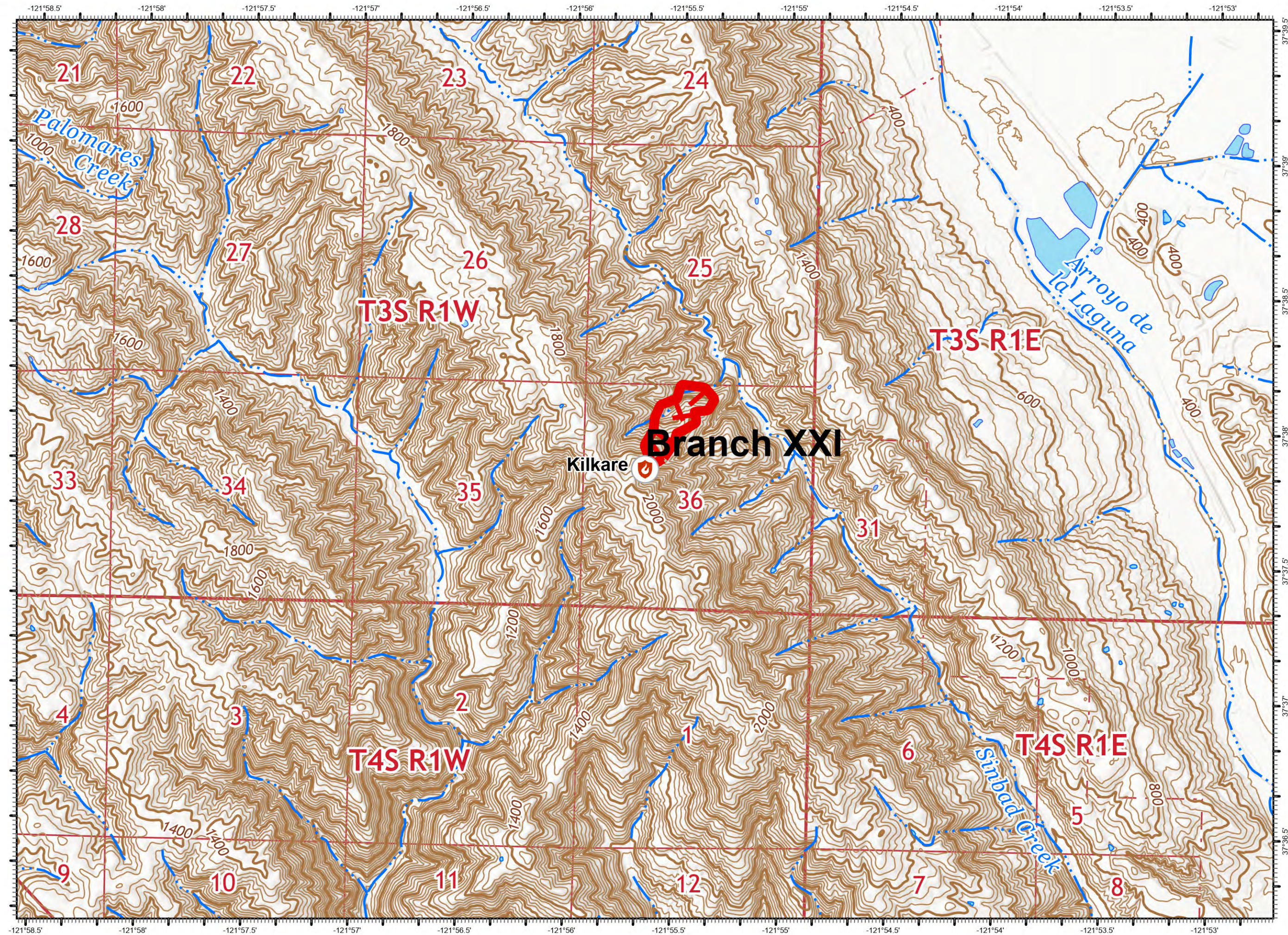


DISCLAIMER:
The displayed incident data is approximate and should only be used for informational purposes. The information contained in supporting base layers was generated from GIS data maintained by different sources and agencies and is not necessarily accurate to mapping, surveying, or engineering standards.

1:24,000



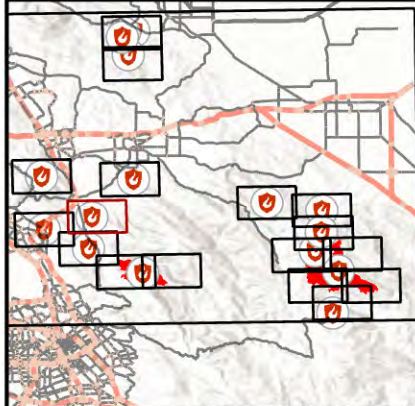
8/18/2020
0004 Hours



IAP Map

SCU Incident
CASCU005772
8/18/2020

Page: 5

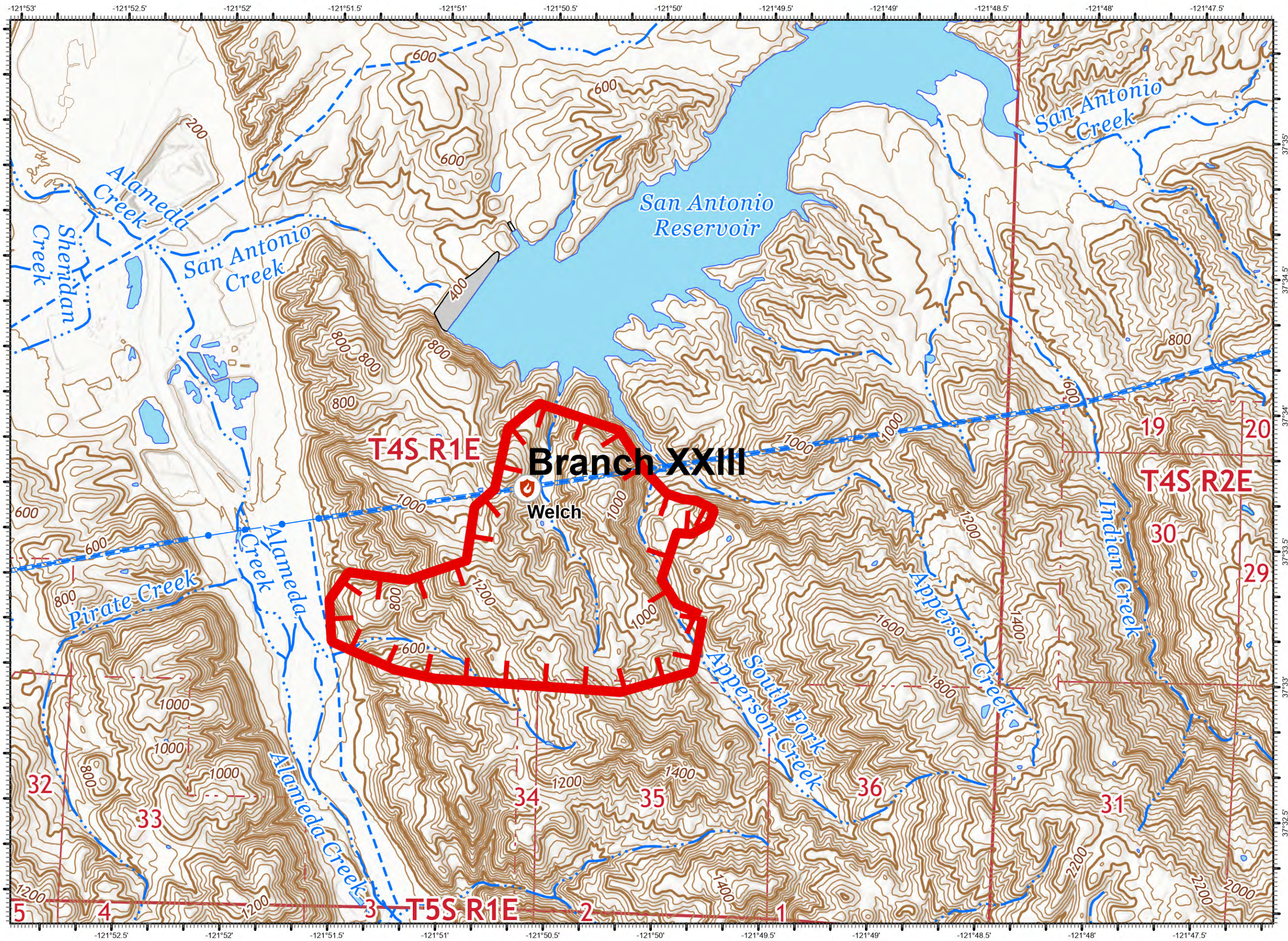


DISCLAIMER:
The displayed incident data is approximate and should only be used for informational purposes. The information contained in supporting base layers was generated from GIS data maintained by different sources and agencies and is not necessarily accurate to mapping, surveying, or engineering standards.

1:24,000



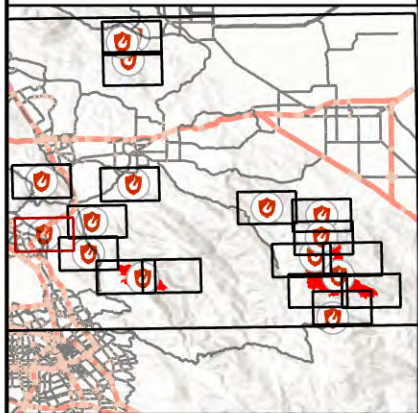
8/18/2020
0005 Hours



IAP Map

SCU Incident
CASCU005772
8/18/2020

Page: 6

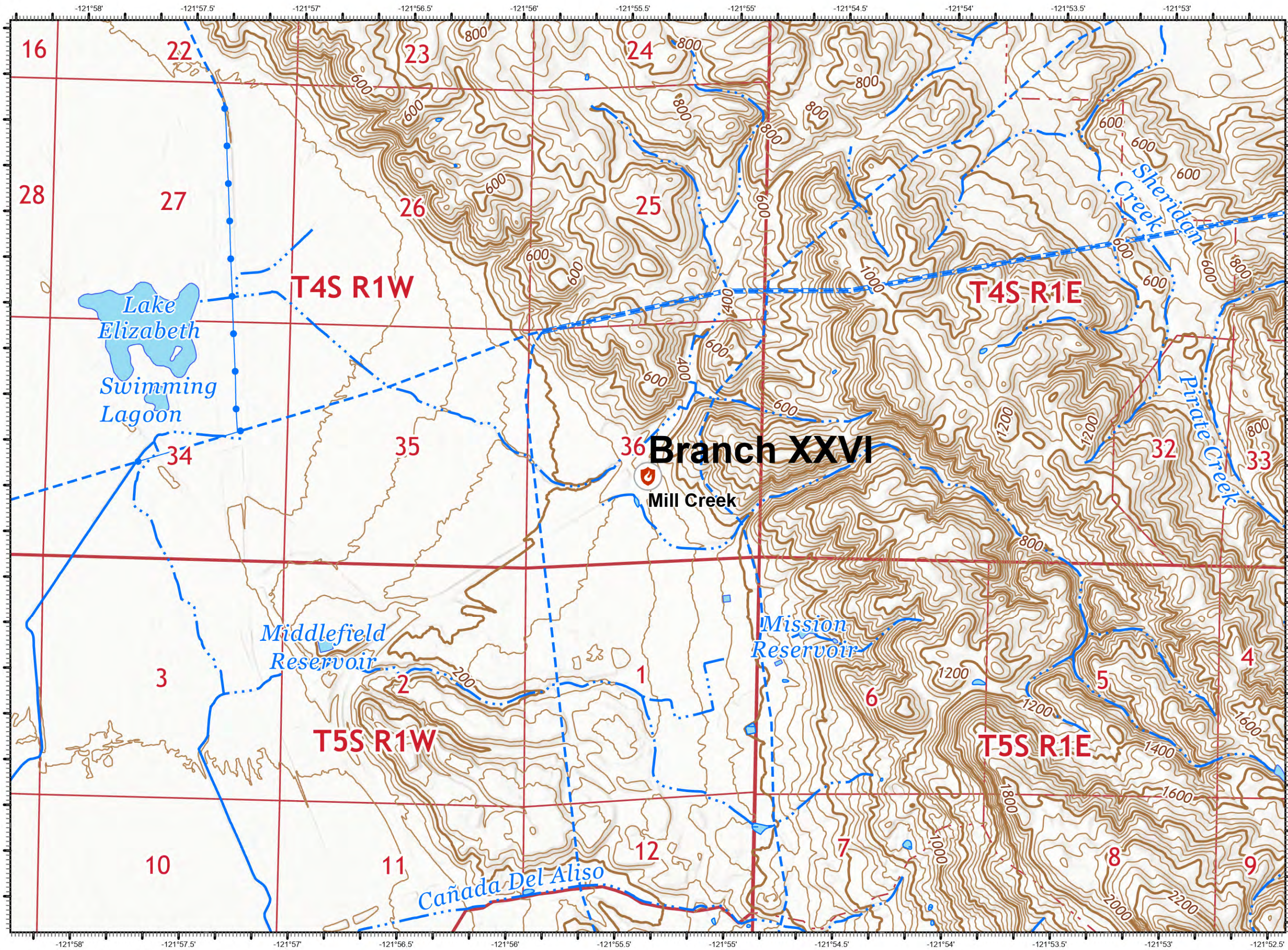


DISCLAIMER:
The displayed incident data is approximate and should only be used for informational purposes. The information contained in supporting base layers was generated from GIS data maintained by different sources and agencies and is not necessarily accurate to mapping, surveying, or engineering standards.

1:24,000



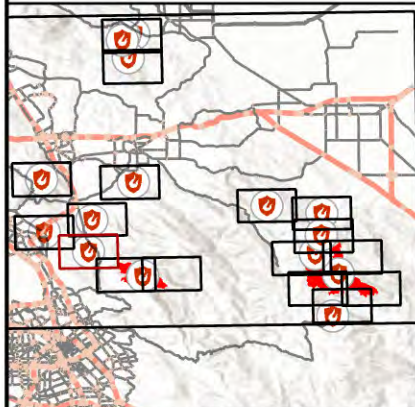
8/18/2020
0005 Hours



IAP Map

SCU Incident
CASC005772
8/18/2020

Page: 7

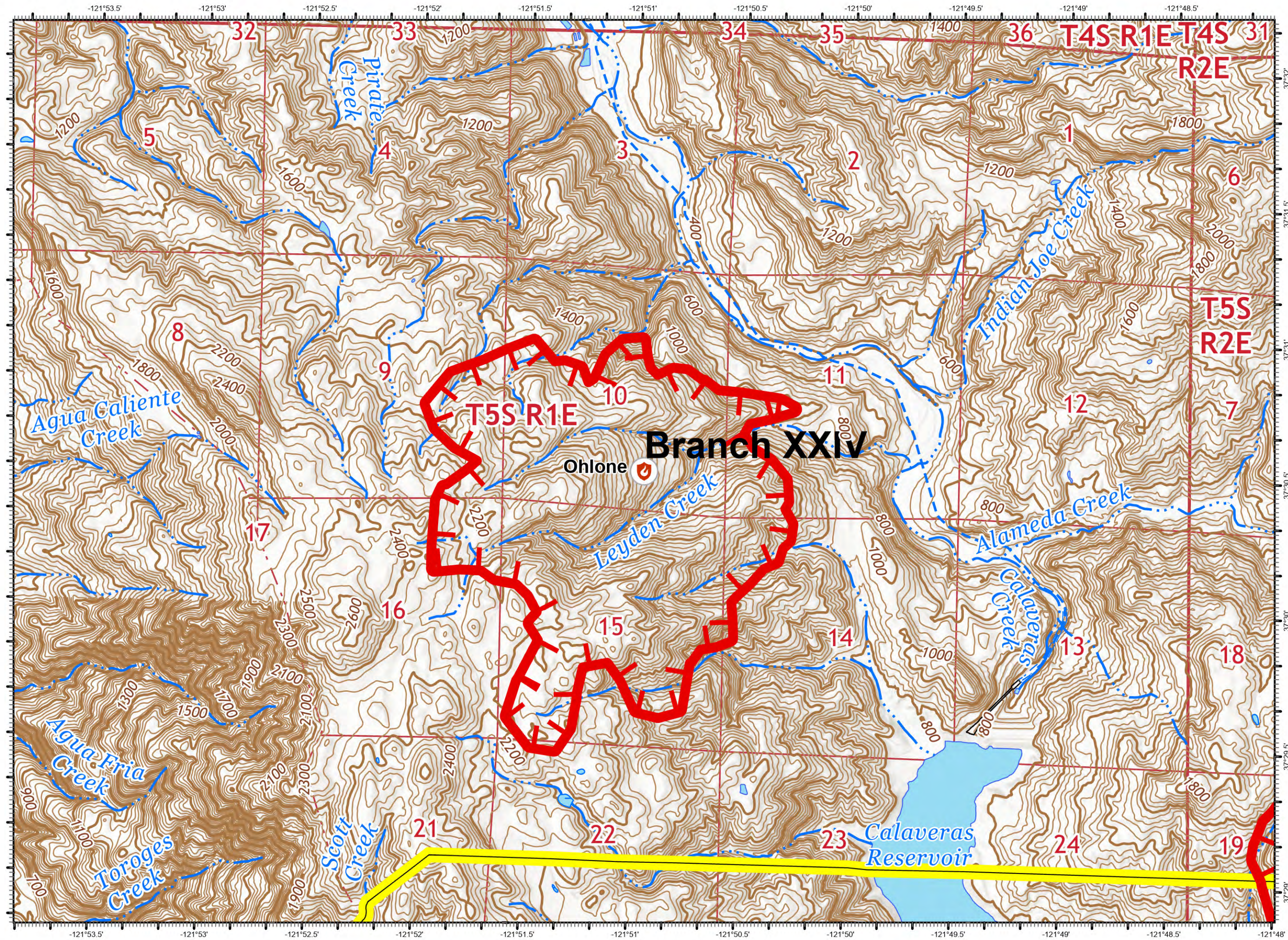


DISCLAIMER:
The displayed incident data is approximate and should only be used for informational purposes. The information contained in supporting base layers was generated from GIS data maintained by different sources and agencies and is not necessarily accurate to mapping, surveying, or engineering standards.

1:24,000



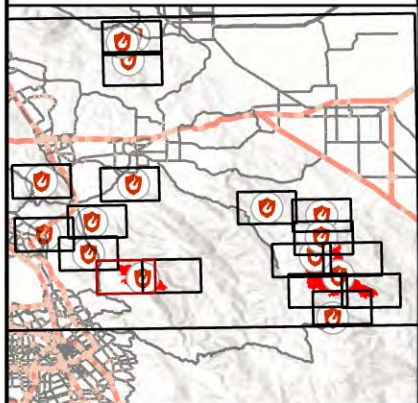
8/18/2020
0005 Hours



IAP Map

SCU Incident
CASCU005772
8/18/2020

Page: 8

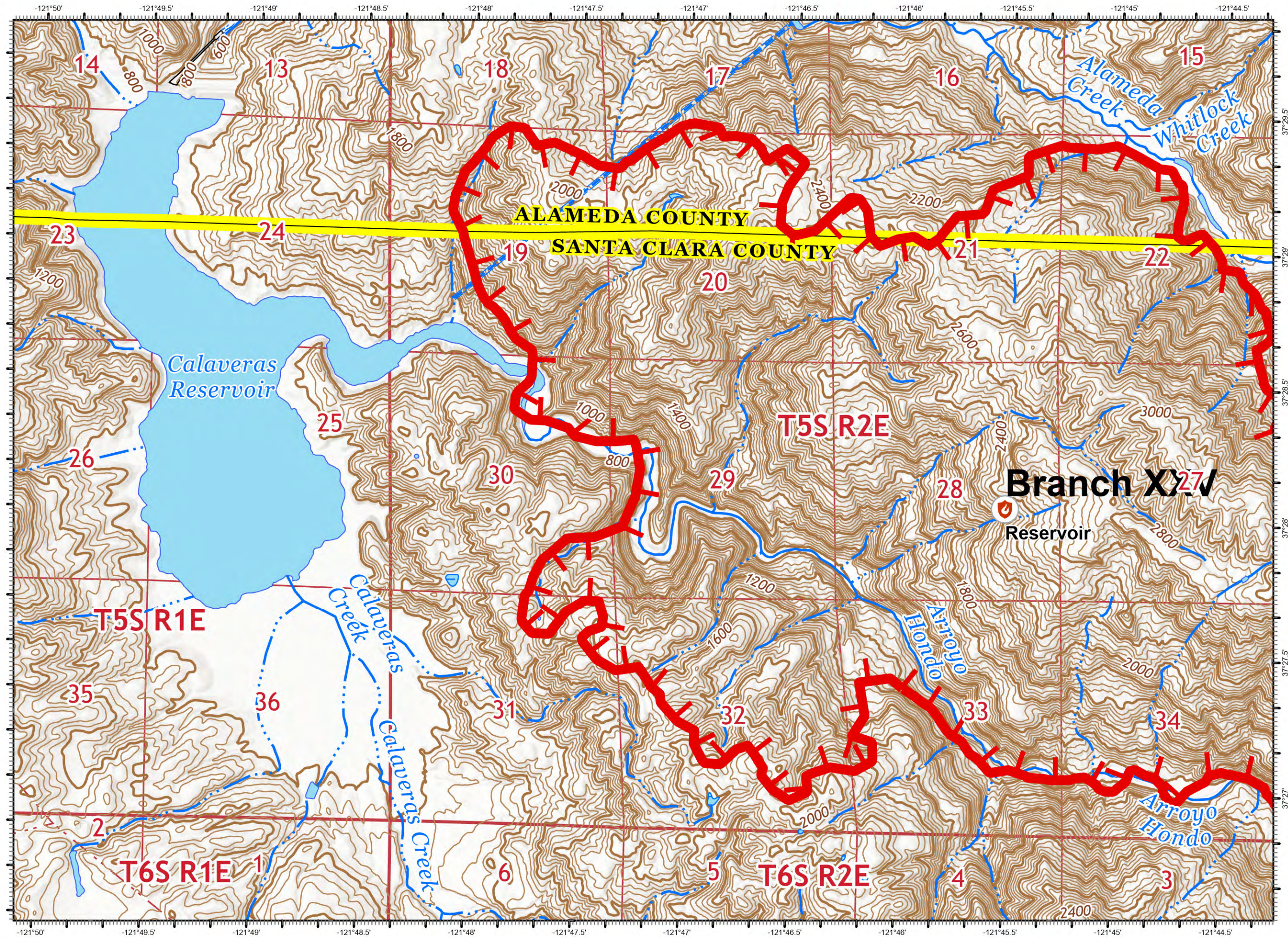


DISCLAIMER:
The displayed incident data is approximate and should only be used for informational purposes. The information contained in supporting base layers was generated from GIS data maintained by different sources and agencies and is not necessarily accurate to mapping, surveying, or engineering standards.

1:24,000



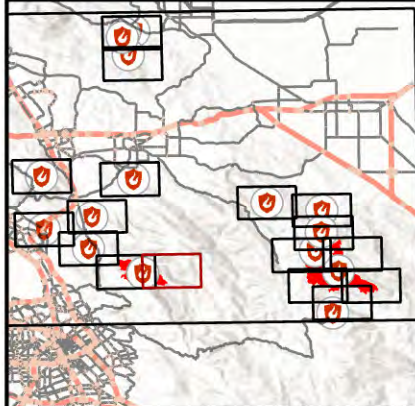
8/18/2020
0006 Hours



IAP Map

SCU Incident
CASCU005772
8/18/2020

Page: 9

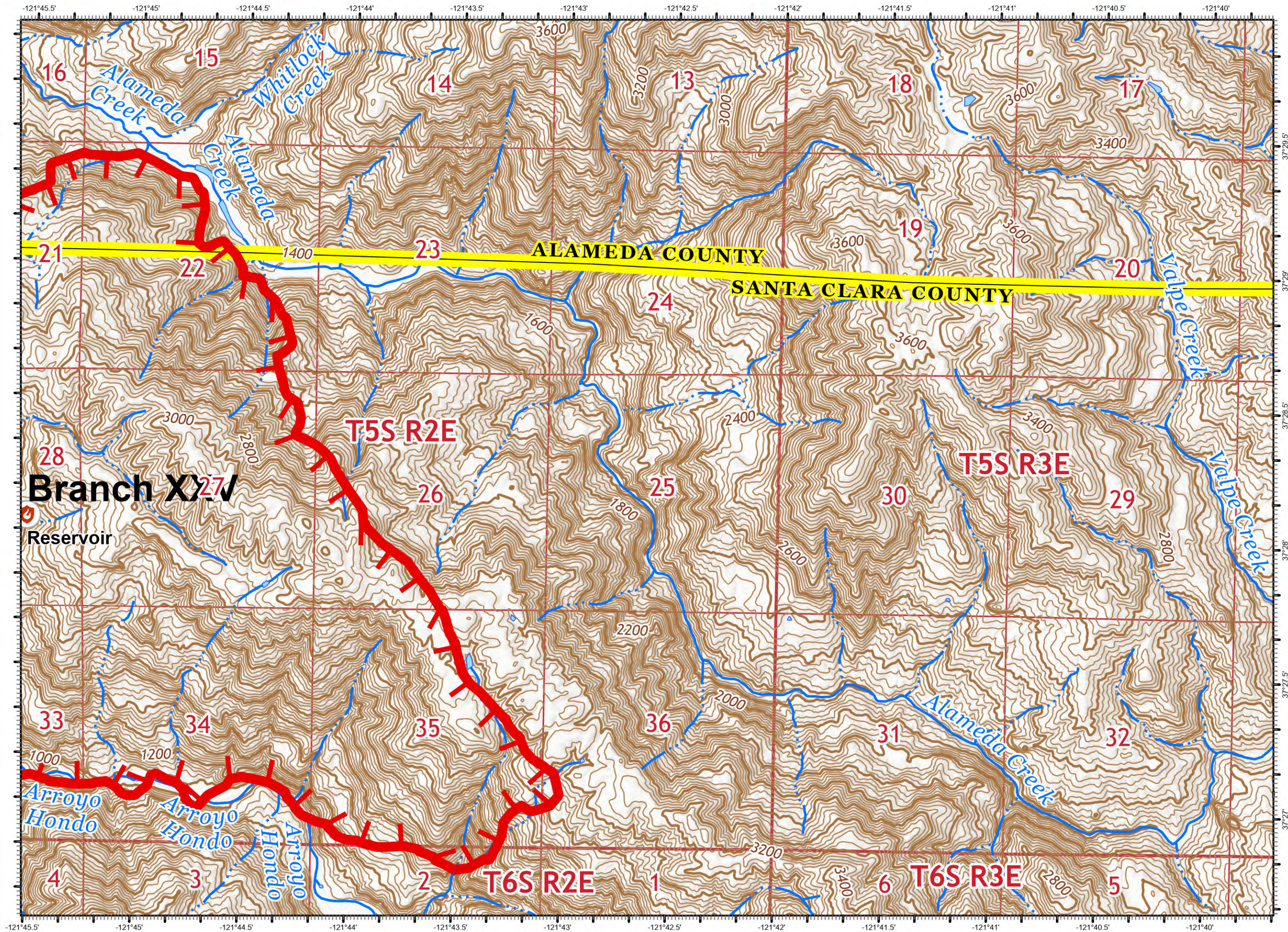


DISCLAIMER:
The displayed incident data is approximate and should only be used for informational purposes. The information contained in supporting base layers was generated from GIS data maintained by different sources and agencies and is not necessarily accurate to mapping, surveying, or engineering standards.

1:24,000



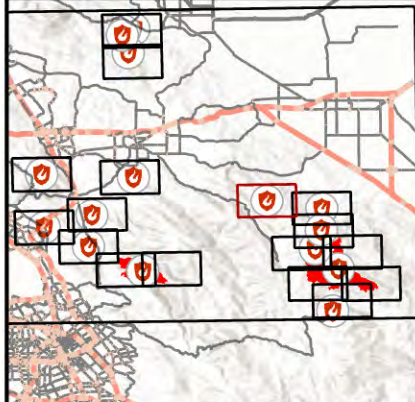
8/18/2020
0006 Hours



IAP Map

SCU Incident
CASCU005772
8/18/2020

Page: 10

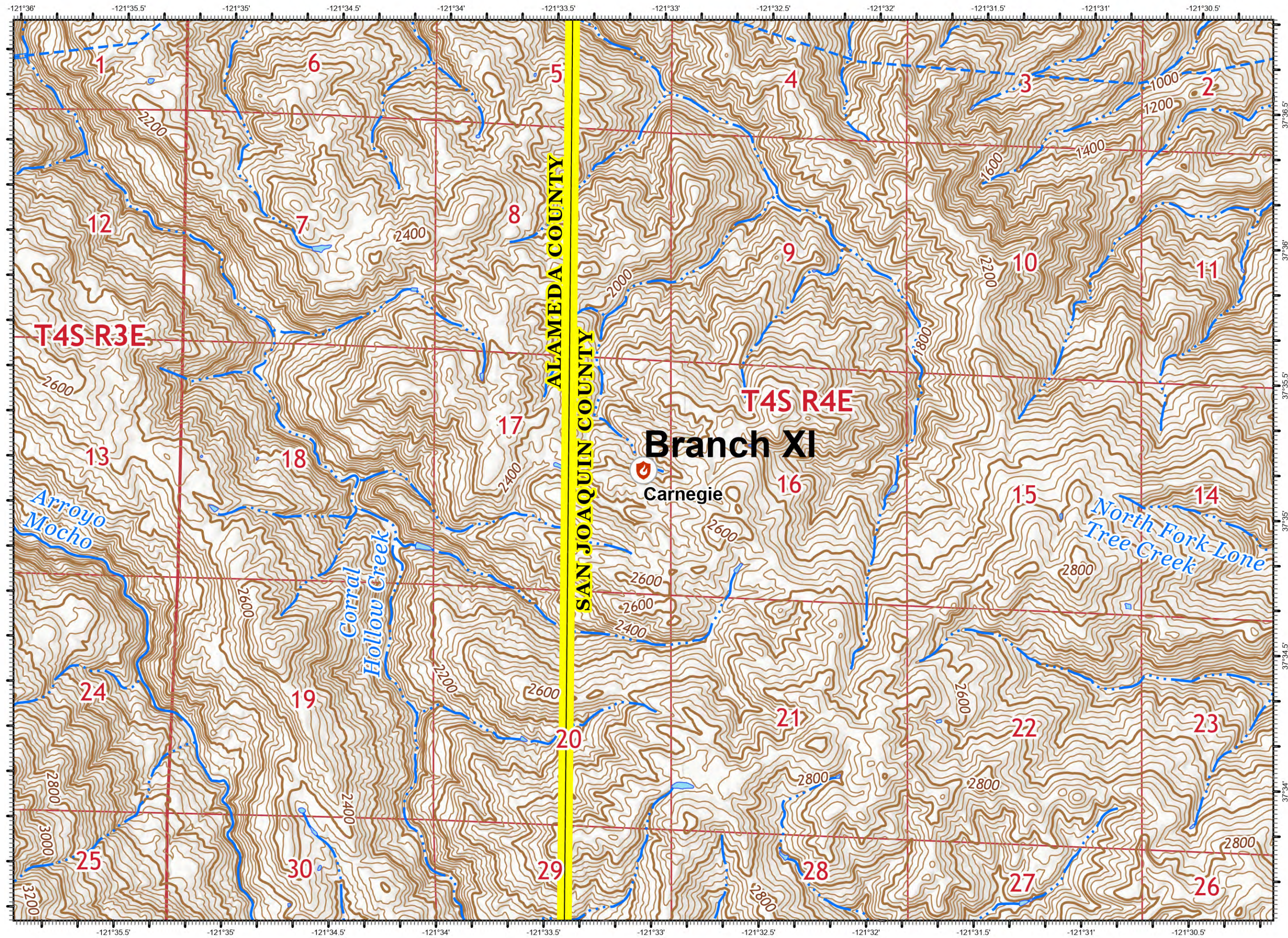


DISCLAIMER:
The displayed incident data is approximate and should only be used for informational purposes. The information contained in supporting base layers was generated from GIS data maintained by different sources and agencies and is not necessarily accurate to mapping, surveying, or engineering standards.

1:24,000



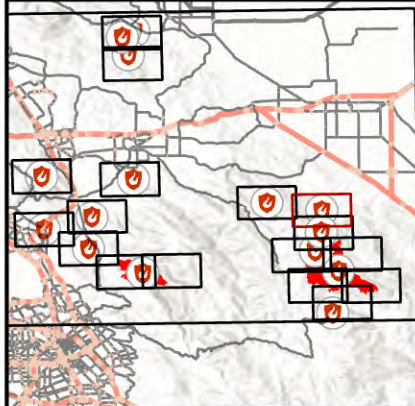
8/18/2020
0005 Hours



IAP Map

SCU Incident
CASCU005772
8/18/2020

Page: 11

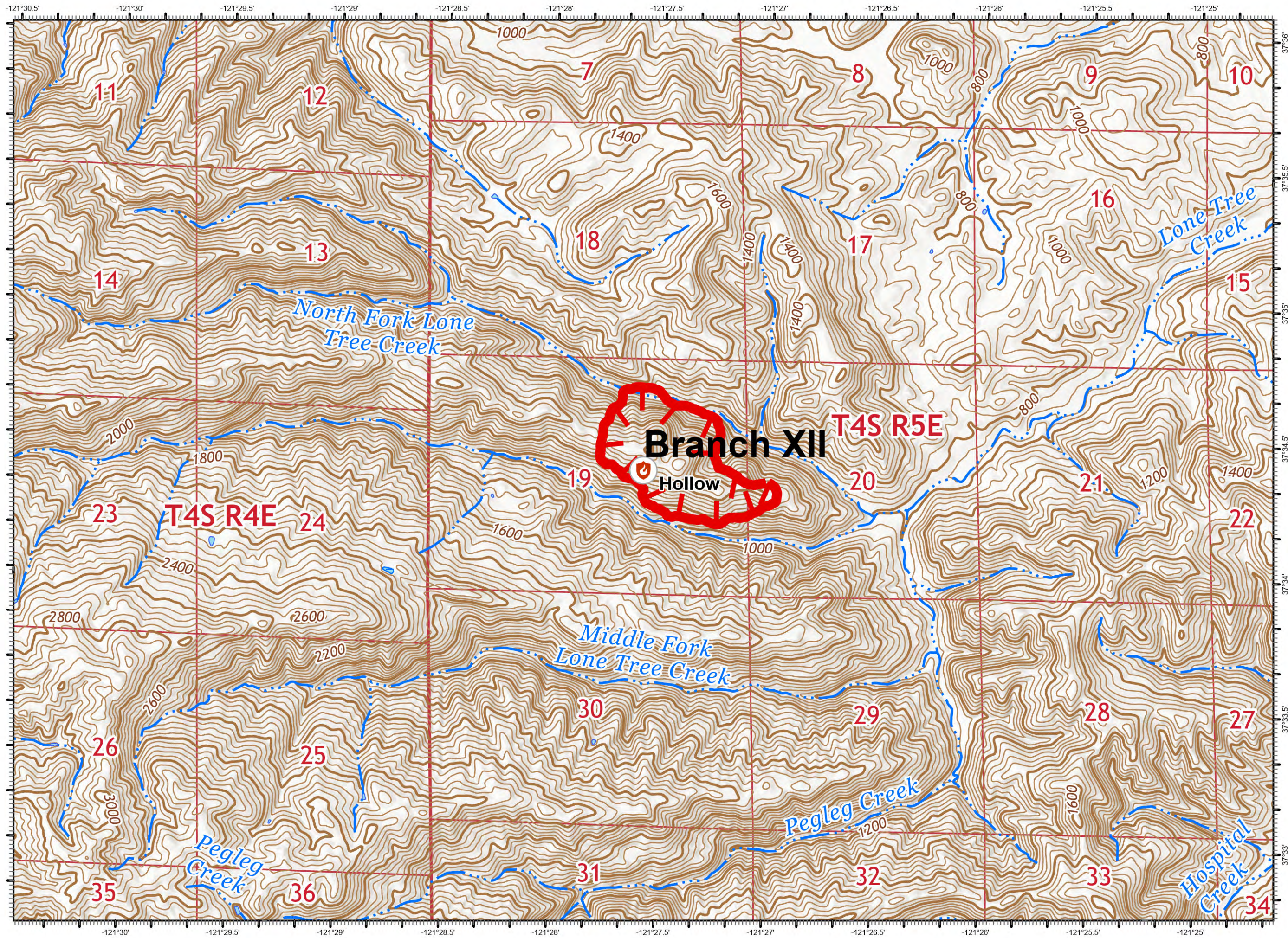


DISCLAIMER:
The displayed incident data is approximate and should only be used for informational purposes. The information contained in supporting base layers was generated from GIS data maintained by different sources and agencies and is not necessarily accurate to mapping, surveying, or engineering standards.

1:24,000



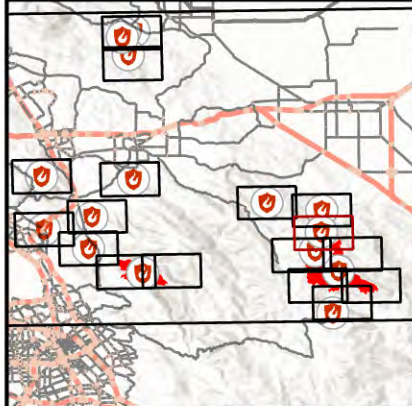
8/18/2020
0005 Hours



IAP Map

SCU Incident
CASCU005772
8/18/2020

Page: 12

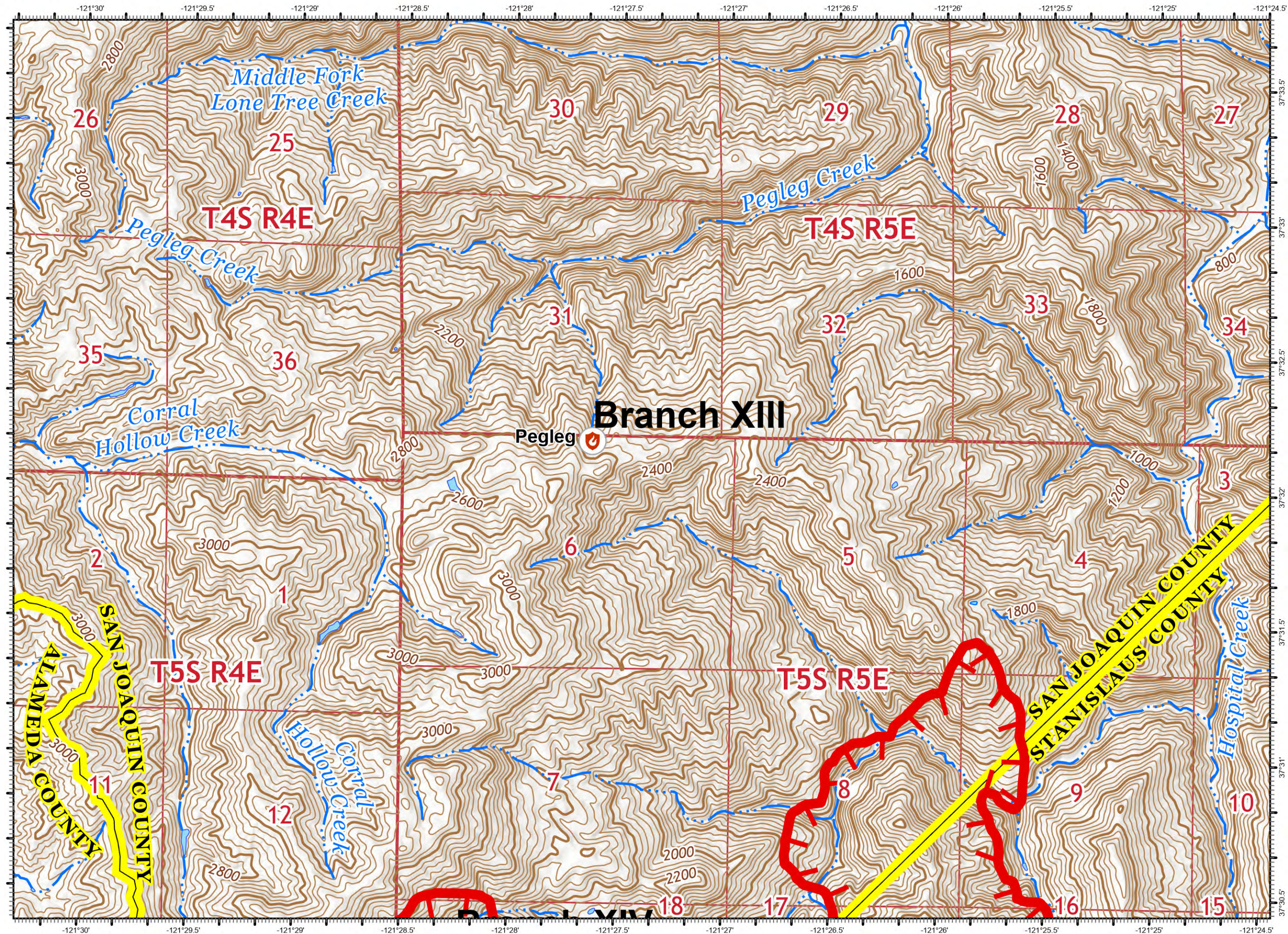


DISCLAIMER:
The displayed incident data is approximate and should only be used for informational purposes. The information contained in supporting base layers was generated from GIS data maintained by different sources and agencies and is not necessarily accurate to mapping, surveying, or engineering standards.

1:24,000



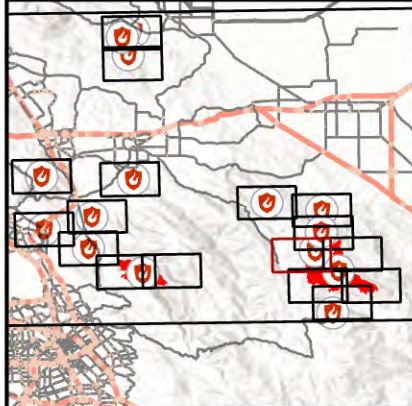
8/18/2020
0006 Hours



IAP Map

SCU Incident
CASCU005772
8/18/2020

Page: 13

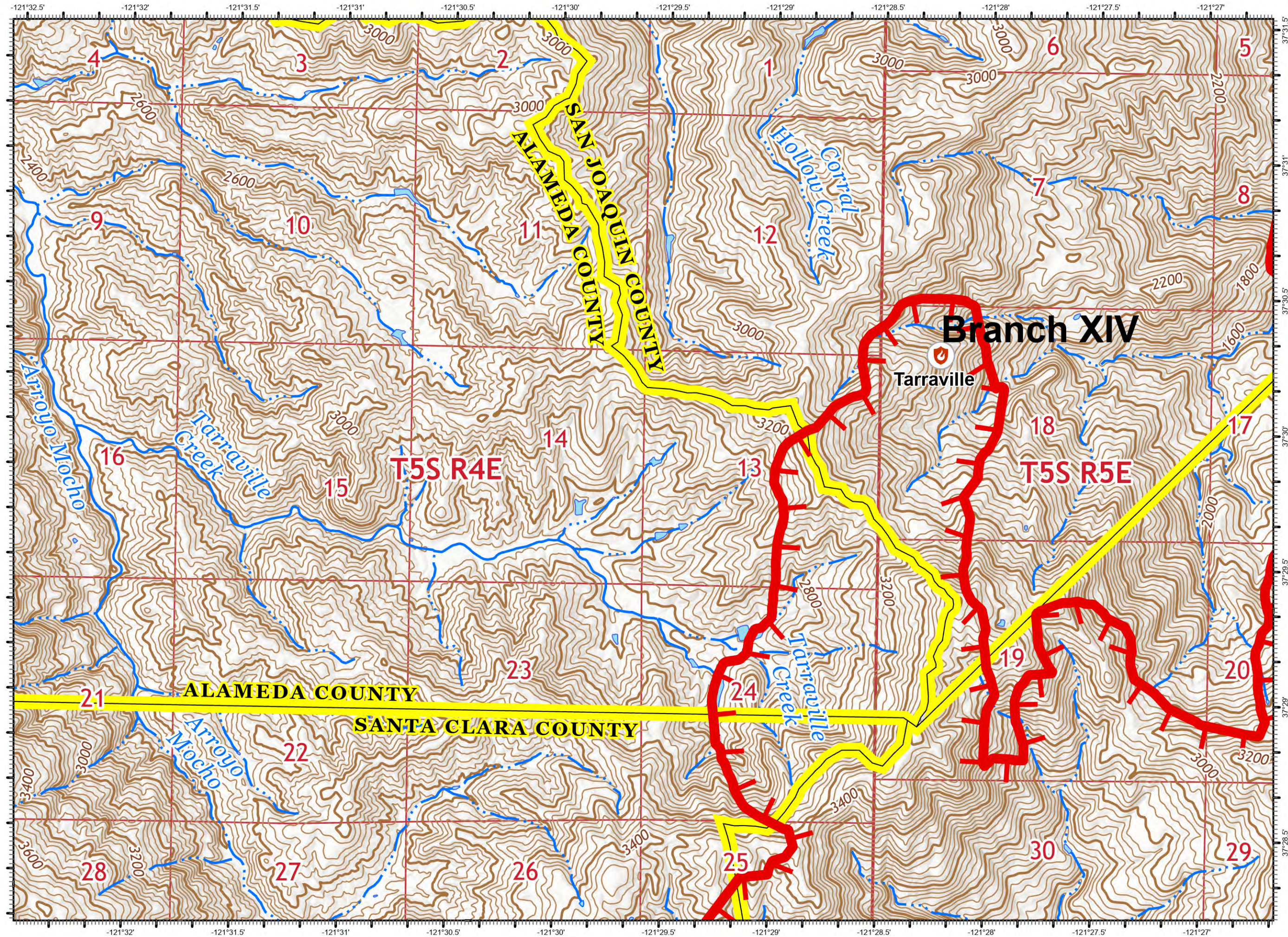


DISCLAIMER:
The displayed incident data is approximate and should only be used for informational purposes. The information contained in supporting base layers was generated from GIS data maintained by different sources and agencies and is not necessarily accurate to mapping, surveying, or engineering standards.

1:24,000



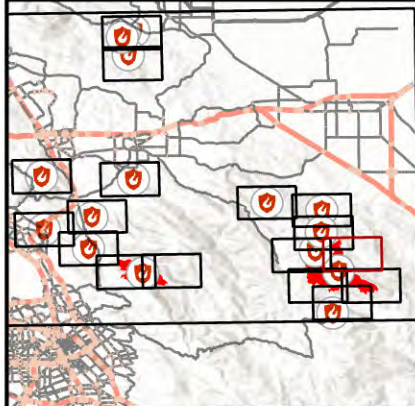
8/18/2020
0006 Hours



IAP Map

SCU Incident
CASC005772
8/18/2020

Page: 14

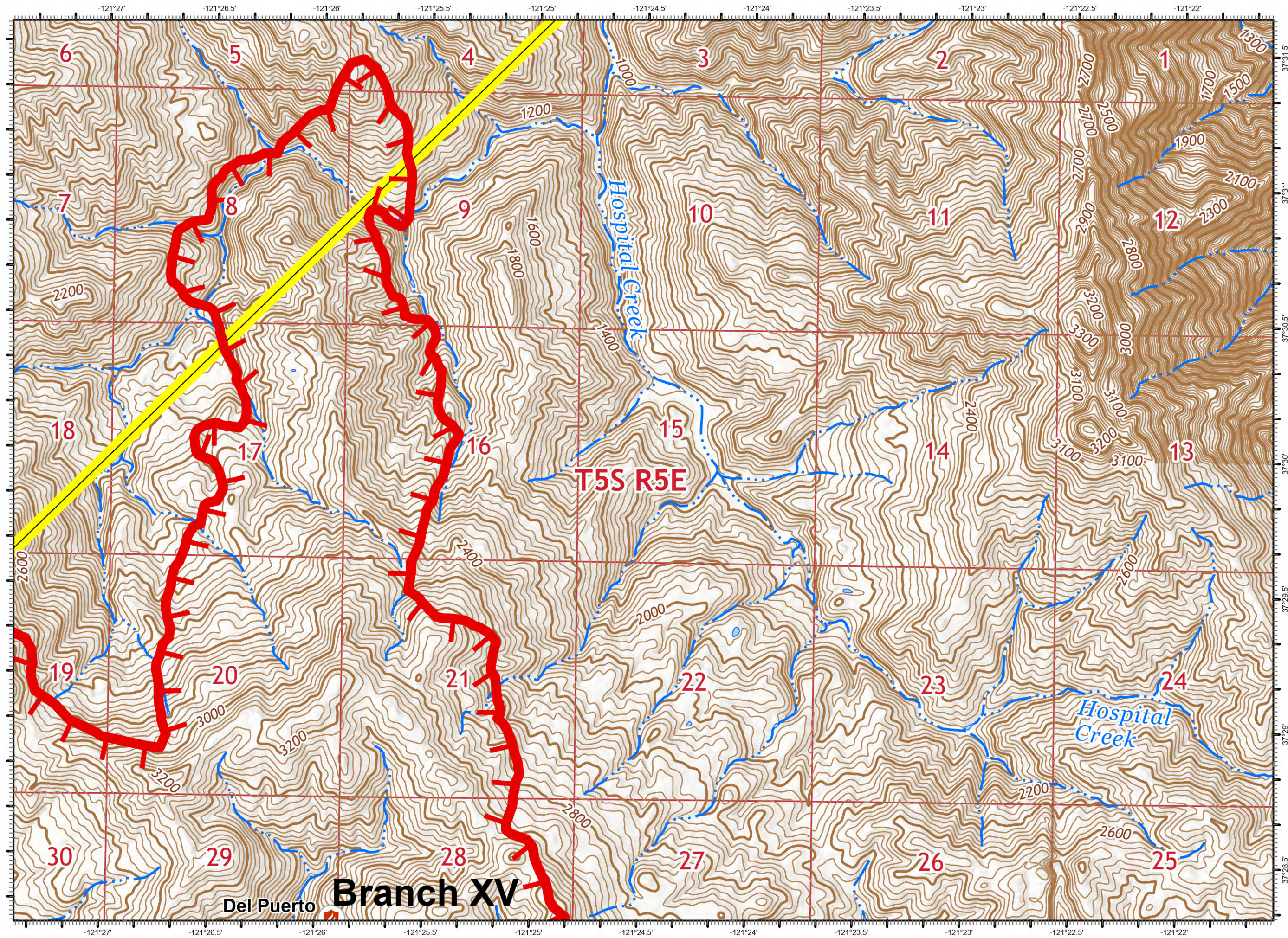


DISCLAIMER:
The displayed incident data is approximate and should only be used for informational purposes. The information contained in supporting base layers was generated from GIS data maintained by different sources and agencies and is not necessarily accurate to mapping, surveying, or engineering standards.

1:24,000



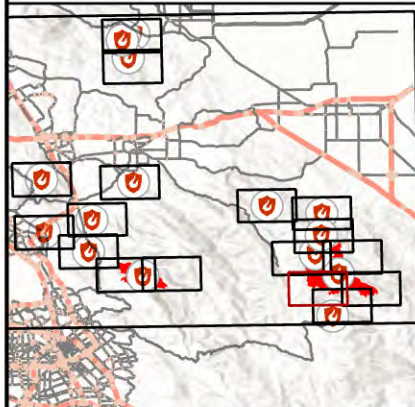
8/18/2020
0007 Hours



IAP Map

SCU Incident
CASCU005772
8/18/2020

Page: 15

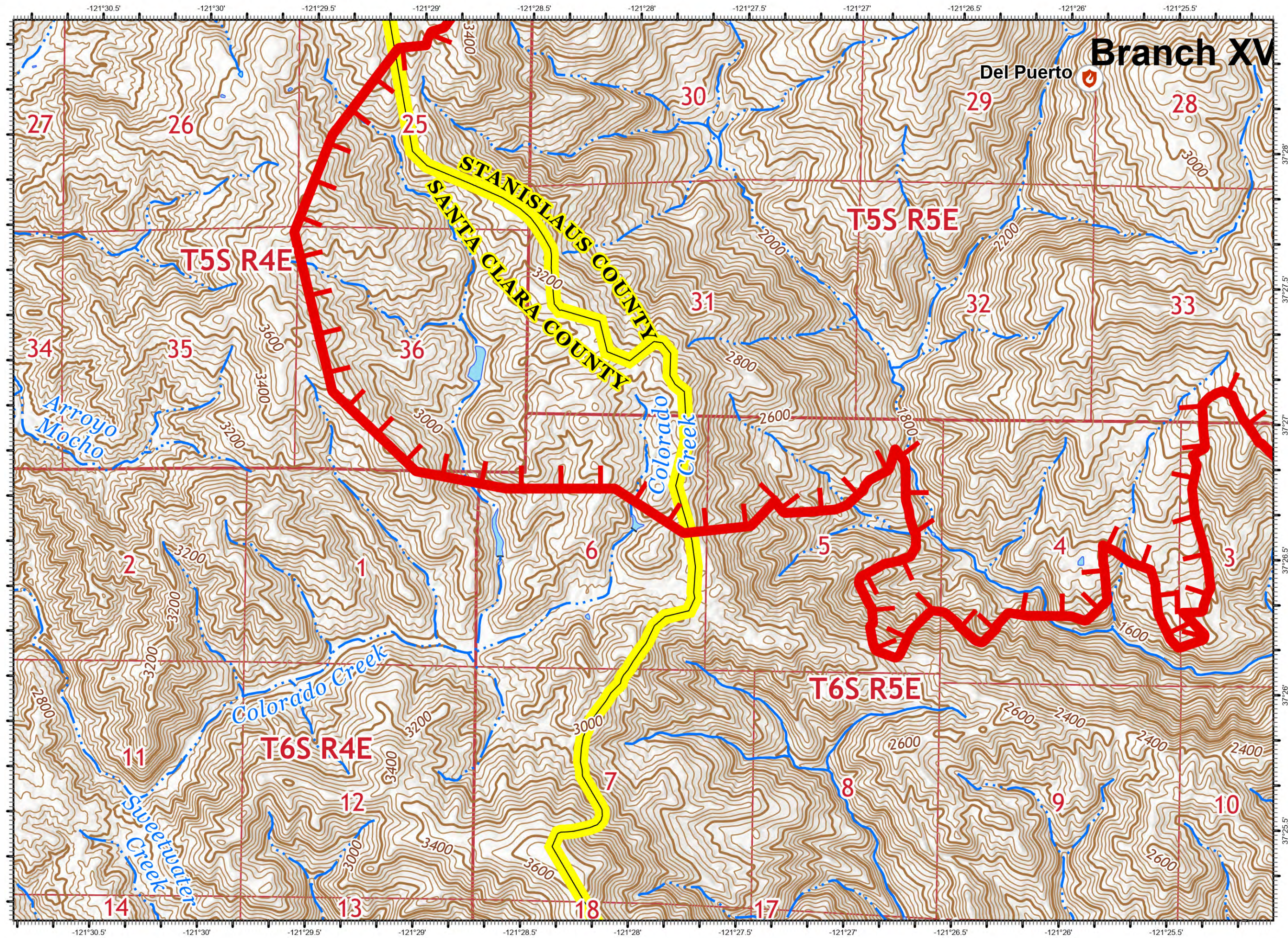


DISCLAIMER:
The displayed incident data is approximate and should only be used for informational purposes. The information contained in supporting base layers was generated from GIS data maintained by different sources and agencies and is not necessarily accurate to mapping, surveying, or engineering standards.

1:24,000



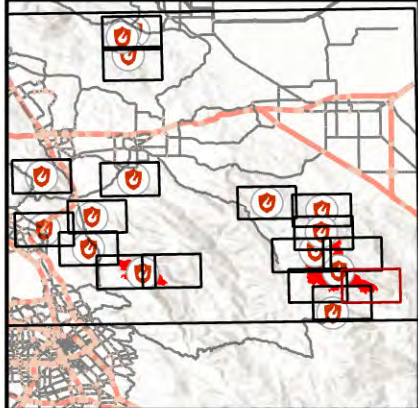
8/18/2020
0007 Hours



IAP Map

SCU Incident
CASCU005772
8/18/2020

Page: 16

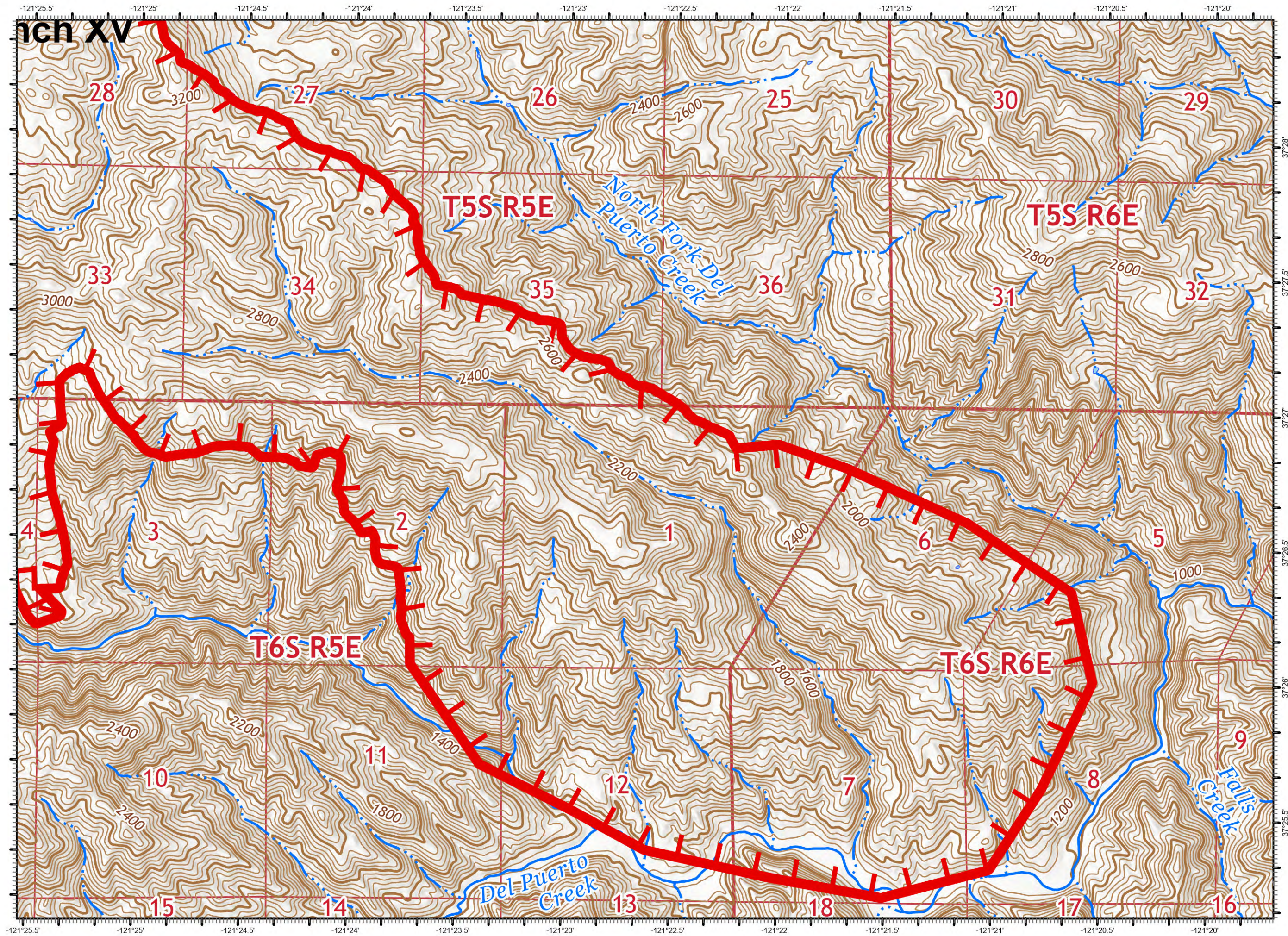


DISCLAIMER:
The displayed incident data is approximate and should only be used for informational purposes. The information contained in supporting base layers was generated from GIS data maintained by different sources and agencies and is not necessarily accurate to mapping, surveying, or engineering standards.

1:24,000



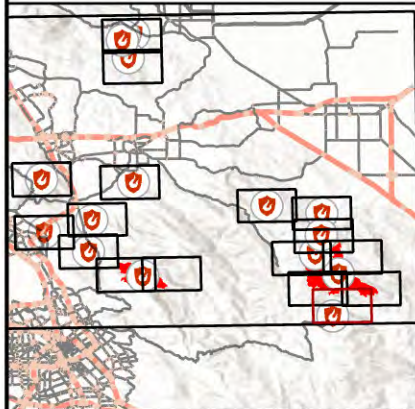
8/18/2020
0007 Hours



IAP Map

SCU Incident
CASC005772
8/18/2020

Page: 17

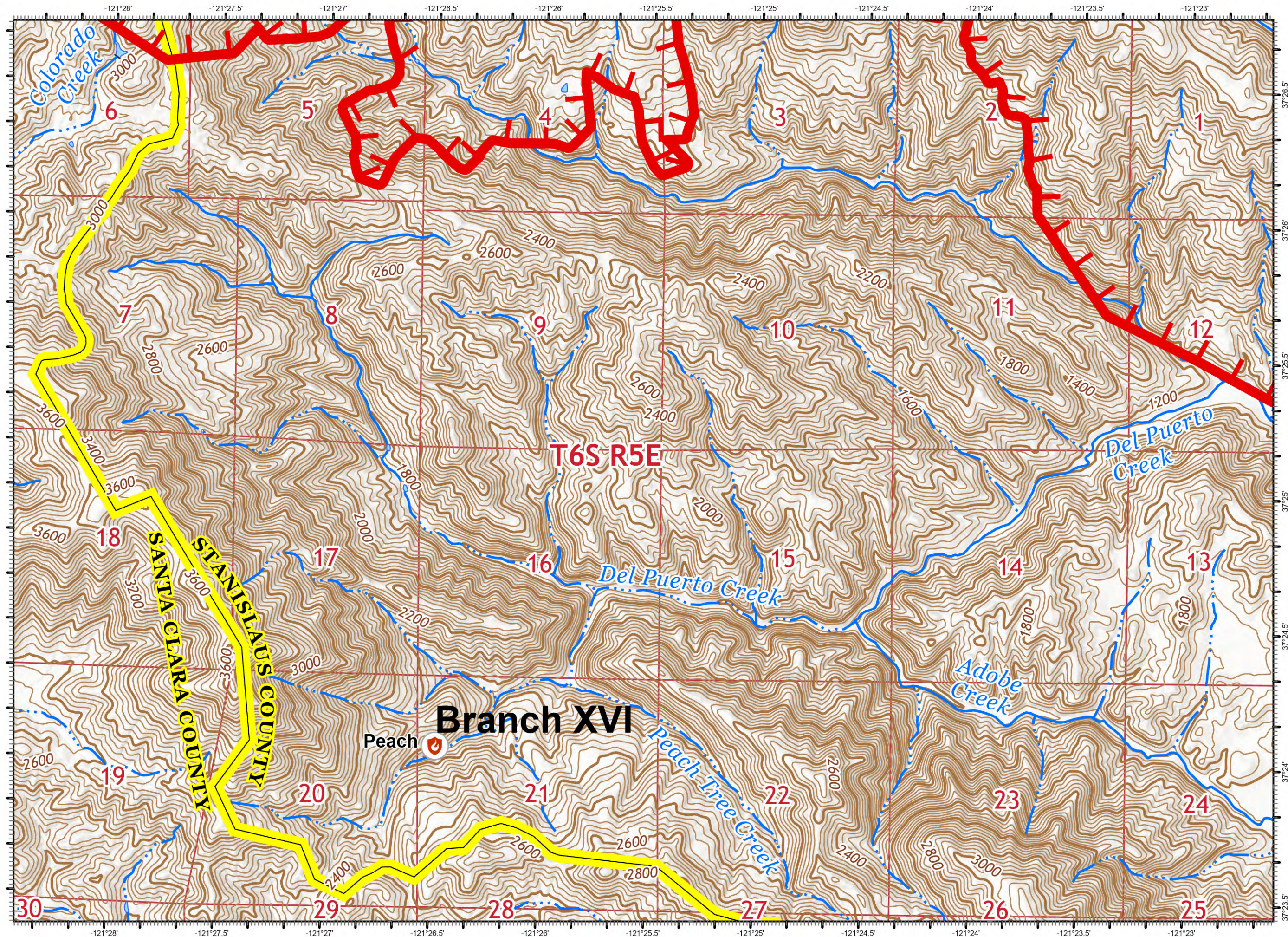


DISCLAIMER:
The displayed incident data is approximate and should only be used for informational purposes. The information contained in supporting base layers was generated from GIS data maintained by different sources and agencies and is not necessarily accurate to mapping, surveying, or engineering standards.

1:24,000



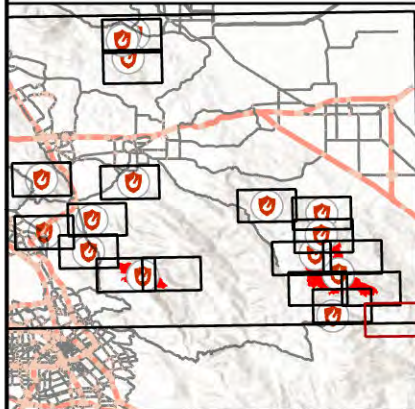
8/18/2020
0007 Hours



IAP Map

SCU Incident
CASCU005772
8/18/2020

Page: 17



DISCLAIMER:
The displayed incident data is approximate and should only be used for informational purposes. The information contained in supporting base layers was generated from GIS data maintained by different sources and agencies and is not necessarily accurate to mapping, surveying, or engineering standards.

1:24,000



8/18/2020
0054 Hours

