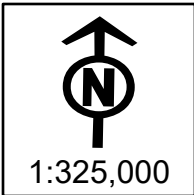
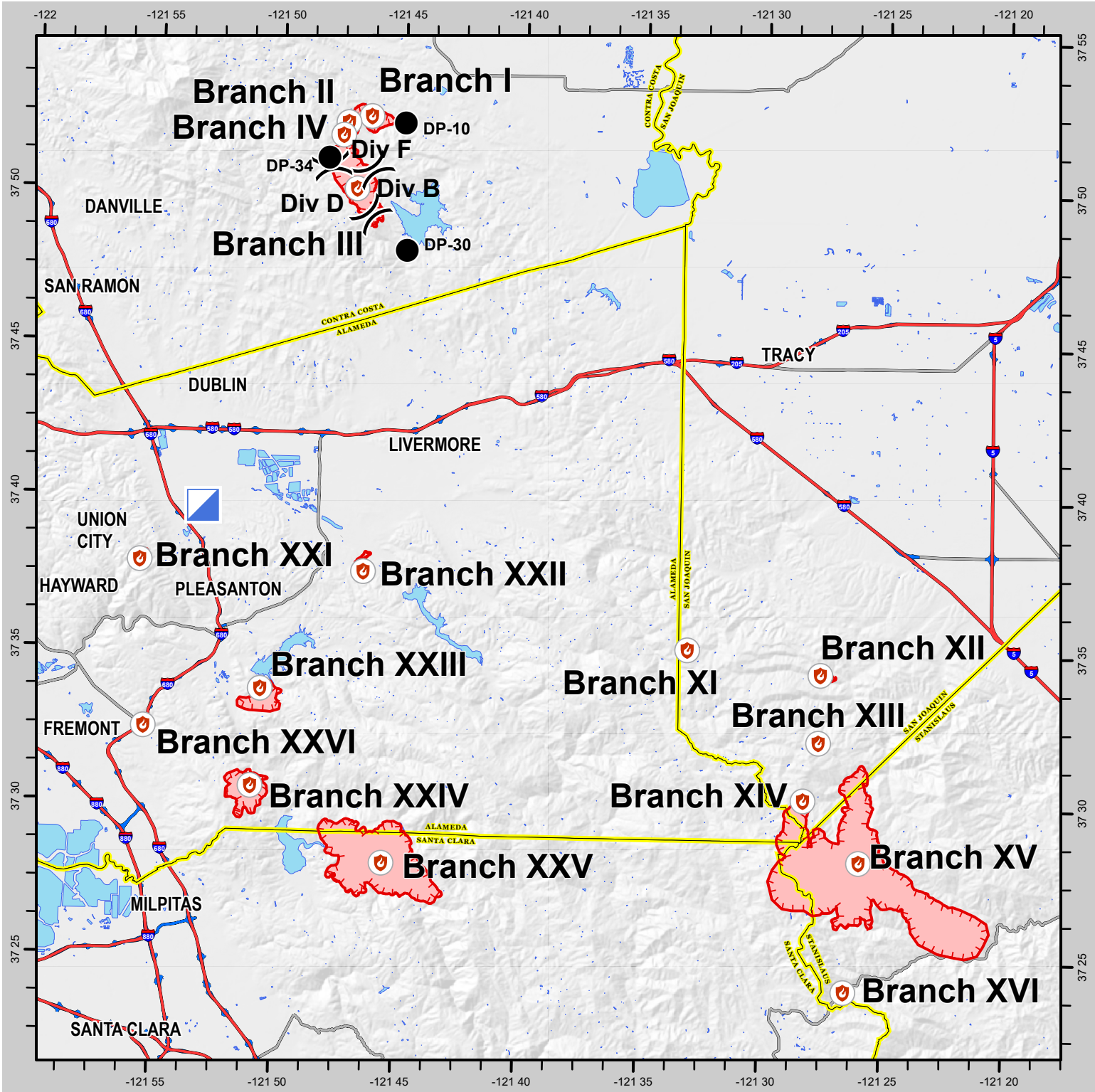




# SCU LIGHTNING COMPLEX INCIDENT TRANSPORTATION MAP

CA SCU 005772 - 8/18/2020



0 0.5 1 2 3 4 5 6 7 8 9 10 11 12 13 14 15 16 17 18 19 20 Miles

Uncontrolled Fire Edge    
 County Boundary    
 Drop Point    
 Division Break    
 Fire Point

**CAL FIRE - INCIDENT MANAGEMENT TEAM 6**  
Established 1994

IMT 6 GISS  
8/18/2020  
0000 Hours  
NAD 83 Teale Albers

DISCLAIMER  
The information contained herein is disseminated and should only be used for informational purposes. The information contained in this report was derived from information that was not verified by the Incident Management Team and is not necessarily accurate for mapping purposes or engineering applications.