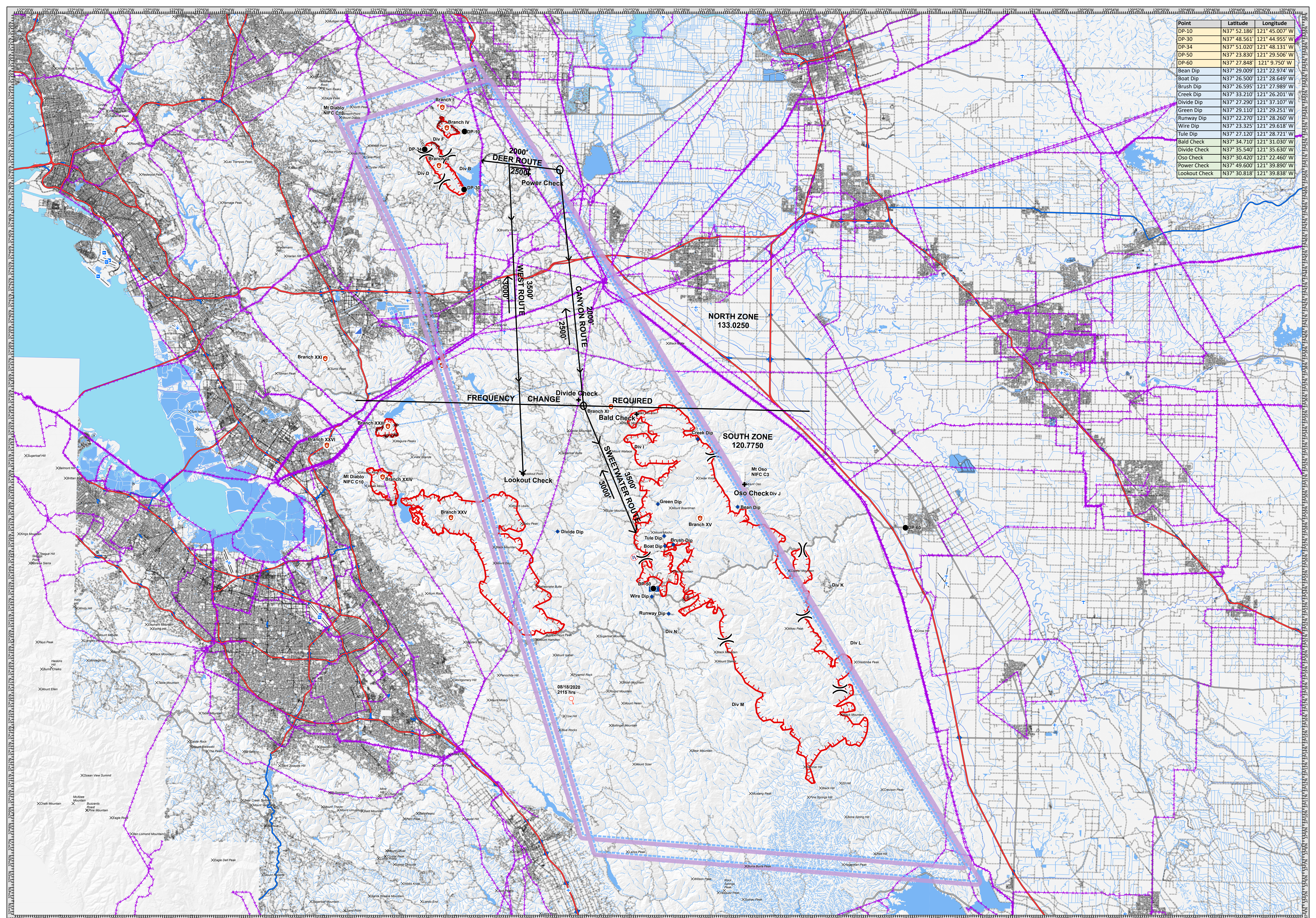


Point	Latitude	Longitude
DP-10	N37° 52.186'	121° 45.007' W
DP-30	N37° 48.561'	121° 44.955' W
DP-34	N37° 51.020'	121° 48.131' W
DP-50	N37° 23.830'	121° 29.506' W
DP-60	N37° 27.848'	121° 9.750' W
Bean Dip	N37° 29.009'	121° 22.974' W
Boat Dip	N37° 26.500'	121° 28.649' W
Brush Dip	N37° 26.595'	121° 27.989' W
Creek Dip	N37° 33.210'	121° 26.201' W
Divide Dip	N37° 27.290'	121° 37.107' W
Green Dip	N37° 29.110'	121° 29.251' W
Runway Dip	N37° 22.270'	121° 28.260' W
Wire Dip	N37° 23.325'	121° 29.618' W
Tule Dip	N37° 27.120'	121° 28.721' W
Bald Check	N37° 34.710'	121° 31.030' W
Divide Check	N37° 35.540'	121° 35.630' W
Oso Check	N37° 30.420'	121° 28.460' W
Power Check	N37° 49.600'	121° 39.890' W
Lookout Check	N37° 30.818'	121° 39.838' W



AIR OPS MAP
SCU LIGHTNING
COMPLEX
CA SCU 005740
 AUGUST 20, 2020

0 2.5 5
 Miles

1:125,000

IMT 6 CISS
 8/20/2020
 0228 Hours
 NAD 83 Teale Albers

Transmission Lines
 Incident Command Post
 Spot Fire
 Fire Point
 Uncontrolled Fire Edge
 Completed Dozer Line
 Check
 Dip Site
 Mobile Weather Unit
 Restricted Water Source
 Division Break
 Repeater
 Completed Hand Line
 TFR

AIR OPS MAP
SCU LIGHTNING
COMPLEX
CA SCU 005740
 AUGUST 20, 2020

AIR OPS MAP
SCU LIGHTNING
COMPLEX
CA SCU 005740
 AUGUST 20, 2020