

PILOT MAP

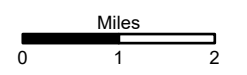
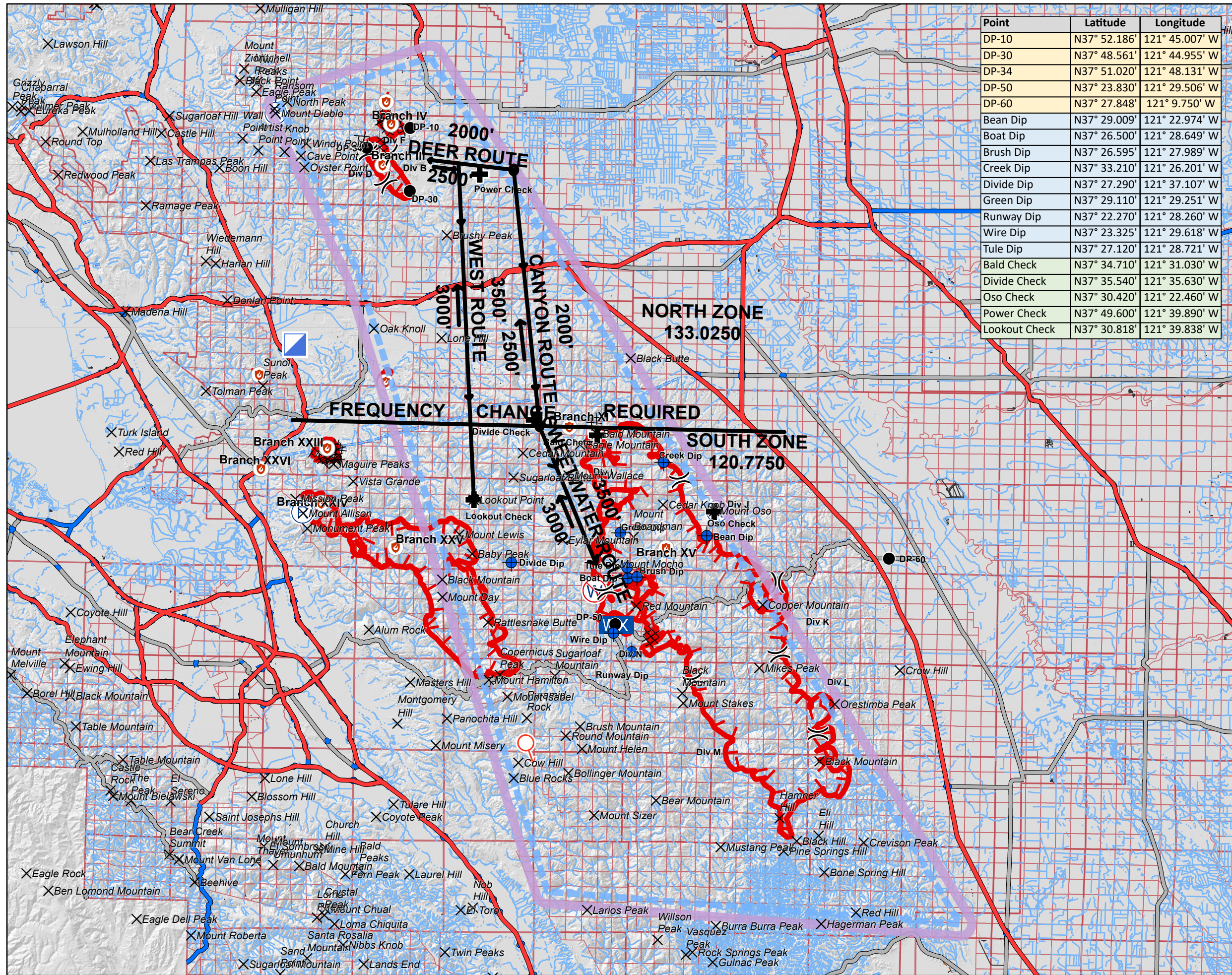
SCU LIGHTNING COMPLEX

CA SCU 005740

AUGUST 20, 2020

Point	Latitude	Longitude
DP-10	N37° 52.186'	121° 45.007' W
DP-30	N37° 48.561'	121° 44.955' W
DP-34	N37° 51.020'	121° 48.131' W
DP-50	N37° 23.830'	121° 29.506' W
DP-60	N37° 27.848'	121° 9.750' W
Bean Dip	N37° 29.009'	121° 22.974' W
Boat Dip	N37° 26.500'	121° 28.649' W
Brush Dip	N37° 26.595'	121° 27.989' W
Creek Dip	N37° 33.210'	121° 26.201' W
Divide Dip	N37° 27.290'	121° 37.107' W
Green Dip	N37° 29.110'	121° 29.251' W
Runway Dip	N37° 22.270'	121° 28.260' W
Wire Dip	N37° 23.325'	121° 29.618' W
Tule Dip	N37° 27.120'	121° 28.721' W
Bald Check	N37° 34.710'	121° 31.030' W
Divide Check	N37° 35.540'	121° 35.630' W
Oso Check	N37° 30.420'	121° 22.460' W
Power Check	N37° 49.600'	121° 39.890' W
Lookout Check	N37° 30.818'	121° 39.838' W

- Check
- Dip Site
- Drop Point
- Incident Command Post
- Mobile Weather Unit
- Repeater
- Spot Fire
- Restricted Water Source
- Fire Point
- Division Break
- Uncontrolled Fire Edge
- Completed Dozer Line
- Completed Hand Line
- TFR



1:400,000

DISCLAIMER:
The displayed incident data is approximate and should only be used for informational purposes. The information contained in supporting base layers was generated from GIS data maintained by different sources and agencies and is not necessarily accurate to mapping, surveying, or engineering standards.

IMT 6 GIS
August 20, 2020
0110