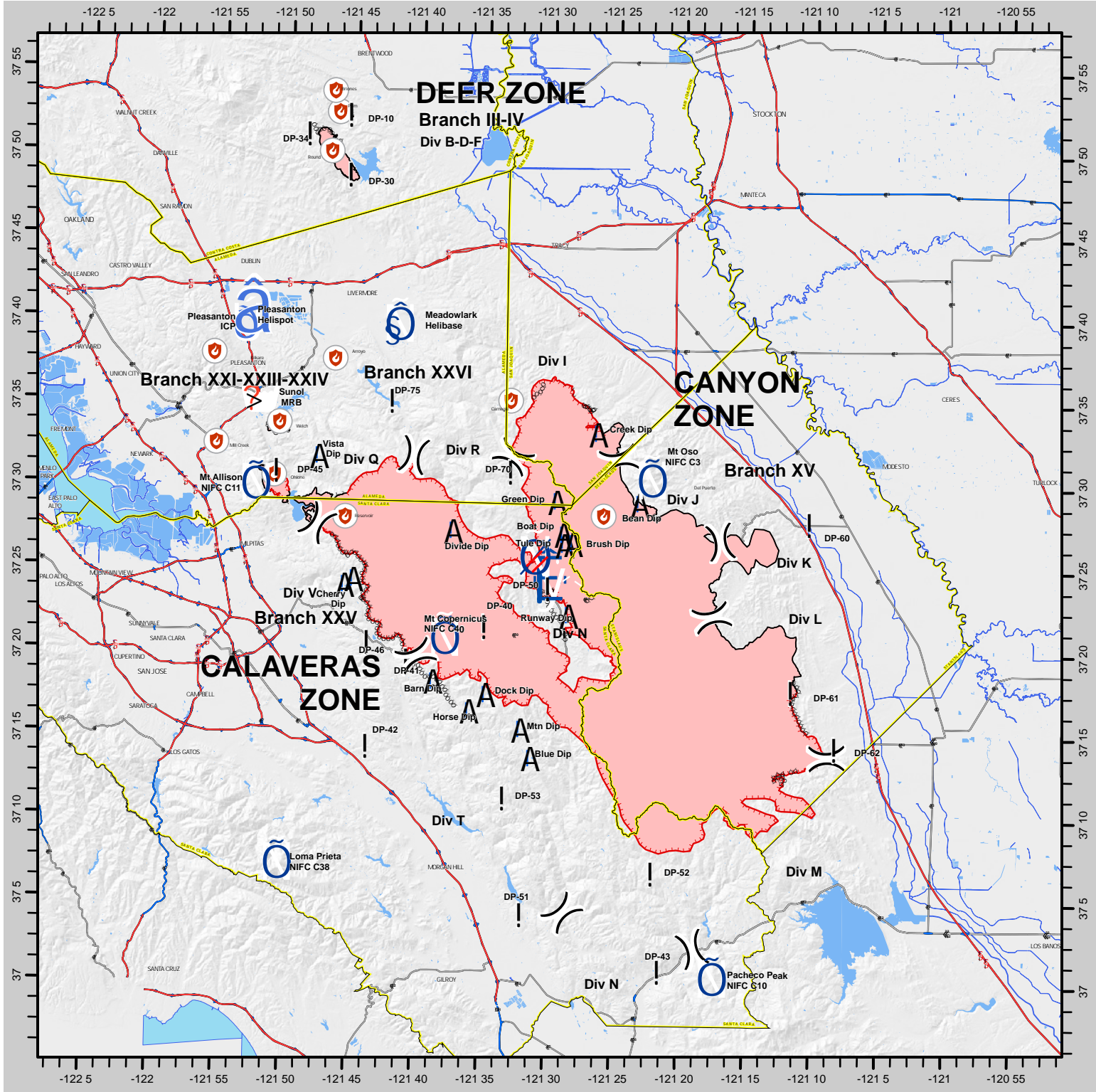
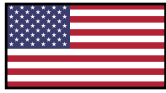




SCU LIGHTNING COMPLEX INCIDENT TRANSPORTATION MAP

CA SCU 005740 - 8/23/2020



F

1:600,000

CAL FIRE - INCIDENT MANAGEMENT TEAM 6
Established 1994

Uncontrolled Fire Edge	County Boundary	Drop Point	Division Break	Fire Point	Repeater
Completed Dozer Line	Completed Hand Line	Dip Site	Branch Break	Mobile Weather Unit	Spot Fire
Helibase					Restricted Water Source
Helispot					Mobile Red. Base

IMT 6 GISS
 8/23/2020
 0036 Hours
 NAD 83 Teale Albers

DISCLAIMER:
 The displayed incident data is approximate and should only be used for informational purposes. The information contained in this map is not guaranteed to be 100% accurate and is not necessarily accurate to mapping, surveying, or engineering standards.