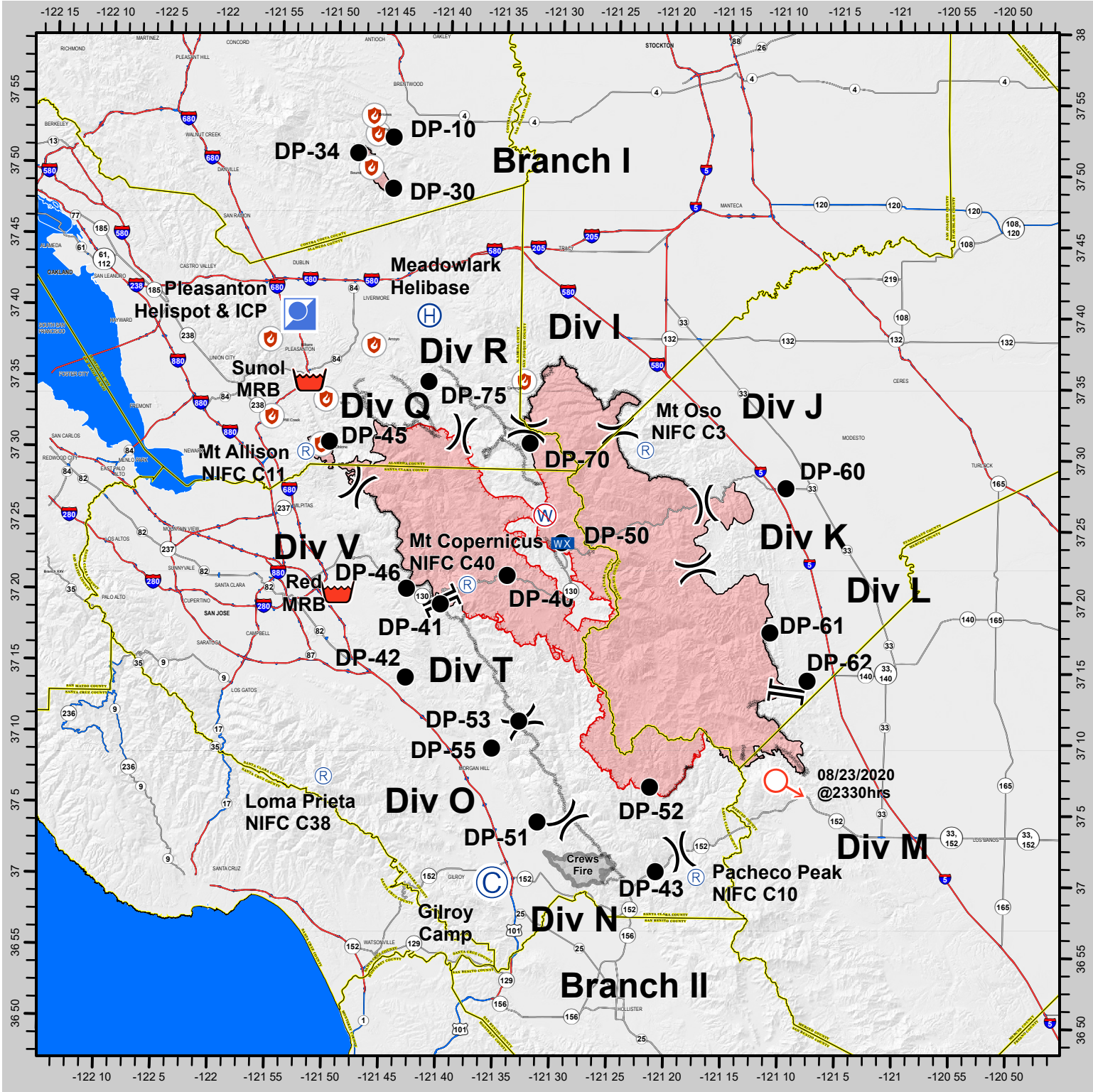




SCU LIGHTNING COMPLEX INCIDENT BRIEFING MAP

CA SCU 005740 - 8/27/2020



CAL FIRE - INCIDENT MANAGEMENT TEAM 6 *Established 1994*



Camp	Mobile Weather Unit	Fire Point	Completed Dozer Line
Drop Point	Repeater	Division Break	Completed Hand Line
Helibase	Retardant/Mud Pit	Branch Break	Wildfire Daily Fire Perimeter
Helispot	Spot Fire	Uncontrolled Fire Edge	County or Equivalent
Incident Command Post	Restricted Water Source	Contained Line	

IMT 6 GISS
8/26/2020
2346 Hours
NAD 83 Teale Albers

DISCLAIMER:
The displayed incident data is approximate and should only be used for informational purposes. The information contained in this briefing map is not guaranteed by CAL FIRE, and is not necessarily accurate to mapping, surveying, or engineering standards.